

LICENSEE EVENT REPORT (LER)

FACILITY NAME (1)  
CRYSTAL RIVER UNIT 3

DOCKET NUMBER (2)  
0 5 0 0 0 3 0 2

PAGE (3)  
1 OF 02

TITLE (4)  
HURRICANE ELENA THREATENS CRYSTAL RIVER 3

EVENT DATE (5)			LER NUMBER (6)			REPORT DATE (7)			OTHER FACILITIES INVOLVED (8)		
MONTH	DAY	YEAR	YEAR	SEQUENTIAL NUMBER	REVISION NUMBER	MONTH	DAY	YEAR	FACILITY NAMES		DOCKET NUMBER(S)
08	30	85	85	0117	00	09	27	85	N/A		0 5 0 0 0
									N/A		0 5 0 0 0

THIS REPORT IS SUBMITTED PURSUANT TO THE REQUIREMENTS OF 10 CFR §. (Check one or more of the following) (11)

OPERATING MODE (9) 1	20.402(b)	20.406(c)	50.73(a)(2)(iv)	73.71(b)
POWER LEVEL (10) 0 4 1	20.406(a)(1)(i)	50.38(a)(1)	50.7. (2)(v)	73.71(a)
	20.406(a)(1)(ii)	50.38(a)(2)	50.73(a)(2)(vii)	OTHER (Specify in Abstract below and in Text, NRC Form 366A)
	20.406(a)(1)(iii)	50.73(a)(2)(i)	50.73(a)(2)(viii)(A)	
	20.406(a)(1)(iv)	50.73(a)(2)(ii)	50.73(a)(2)(viii)(B)	
	20.406(a)(1)(v)	50.73(a)(2)(iii)	50.73(a)(2)(ix)	

LICENSEE CONTACT FOR THIS LER (12)

NAME  
W. K. Bandhauer, Nuclear Safety Supervisor

TELEPHONE NUMBER  
AREA CODE: 9 0 4  
7 9 5 - 6 4 8 6

COMPLETE ONE LINE FOR EACH COMPONENT FAILURE DESCRIBED IN THIS REPORT (13)

CAUSE	SYSTEM	COMPONENT	MANUFAC. TURER	REPORTABLE TO NPRDS	CAUSE	SYSTEM	COMPONENT	MANUFAC. TURER	REPORTABLE TO NPRDS

SUPPLEMENTAL REPORT EXPECTED (14)

YES (if yes, complete EXPECTED SUBMISSION DATE)  NO

EXPECTED SUBMISSION DATE (15)

MONTH	DAY	YEAR

ABSTRACT (Limit to 1400 spaces, i.e., approximately fifteen single-space typewritten lines) (16)

Commencing August 30, 1985, Hurricane Elena threatened the northeast coast of the Gulf of Mexico where Crystal River Unit 3 (CR-3) is located. Upon notification of a hurricane warning by the National Weather Service, CR-3 declared an Unusual Event at 1800. Watertight flood control doors were closed and the plant staff was augmented with additional personnel. The center of the hurricane remained approximately sixty miles off the coast for nearly two days before proceeding on a course away from the power plant. Sustained hurricane force winds or significant storm water surge were not encountered at CR-3. The power plant continued to operate during the storm at forty-one percent power while generating 331 megawatts electric. The Unusual Event was terminated at 1645 on September 1, 1985.

8510020193 850927  
PDR ADOCK 05000302  
S PDR

IE22  
|||

LICENSEE EVENT REPORT (LER) TEXT CONTINUATION

FACILITY NAME (1)  CRYSTAL RIVER UNIT 3	DOCKET NUMBER(1) (2)  0   5   0   0   0   3   0   2	LER NUMBER (6)			PAGE (3)	
		YEAR	SEQUENTIAL NUMBER	REVISION NUMBER		
		8   5	-   0   1   7	-   0   0	0   2	OF

TEXT (If more space is required, use additional NRC Form 366A's) (17)

EVENT DESCRIPTION

Commencing August 30, 1985, Hurricane Elena threatened the northeast coast of the Gulf of Mexico where Crystal River Unit 3 (CR-3) is located. Upon notification of a hurricane warning by the National Weather Service, CR-3 declared an Unusual Event at 1800.

Watertight flood control doors were closed and the plant staff was augmented with additional operations and maintenance personnel. The center of the hurricane stalled approximately sixty miles off the coast for nearly two days before proceeding on a course away from the power plant. Sustained hurricane force winds or significant storm water surge was not encountered at CR-3. The plant continued to operate at forty-one percent reactor power while producing 331 megawatts electric throughout the storm. The Unusual Event was terminated at 1645 on September 1, 1985.

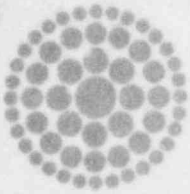
SAFETY CONSIDERATIONS

Neither nuclear safety nor the health of the public were affected during this event. Significant equipment damage did not occur, and the operation of CR-3 was not hampered.

CR-3 was designed to withstand hurricane force winds and storm water surges. The plant design provides for full protection against wind and tides for all components which must operate for a safe and orderly shutdown of the power plant.

PREVIOUS SIMILAR EVENTS

During its operational lifetime, CR-3 has not previously experienced hurricane warning conditions.



**Florida  
Power**  
CORPORATION

September 27, 1985  
3F0985-24

Document Control Desk  
U.S. Nuclear Regulatory Commission  
Washington, DC 20555

Subject: Crystal River Unit 3  
Docket No. 50-302  
Operating License No. DPR-72  
License Event Report No. 85-017-00

Dear Sir:

Enclosed is Licensee Event Report (LER) No. 85-017-00 which is submitted in accordance with 10 CFR 50.73.

Should there be any questions, please contact this office.

Sincerely,

G. R. Westafer  
Manager, Nuclear Operations  
Licensing and Fuel Management

AEF/feb

Enclosure

cc: Dr. J. Nelson Grace  
Regional Administrator, Region II  
Office of Inspection & Enforcement  
U.S. Nuclear Regulatory Commission  
101 Marietta Street N.W., Suite 2900  
Atlanta, GA 30323

*LER 22*  
*11*