

U.S. Nuclear Regulatory Commission
3F1296-05
Attachment A

FLORIDA POWER CORPORATION
CRYSTAL RIVER UNIT 3
RESTART PANEL

Approved: *P. M. Beard* 12/3/96
P. M. Beard, Senior Vice President,
Nuclear Operations

RESTART PANEL CHARTER

On September 2, 1996, Crystal River Unit 3 (CR3) was shutdown by a crack in the main turbine lube oil piping internal to the main lube oil reservoir. The outage was extended in October to address technical design issues resulting from limited design margins in key emergency cooling and AC power systems. In order to assure comprehensive tracking and closure of all the action items necessary to safely return CR3 to power operation and to assure reliable, continuous operation to Refuel 11, a Florida Power Corporation (FPC) Restart Panel will be formed and chartered as follows.

1. Composition

Restart Panel and Accountability Team membership will be as shown in the attached organization chart and as listed below:

Restart Panel

Chairman, Vice President Nuclear Production - G. Boldt
Vice Chairman, Director Quality Programs - J. Baumstark
Member, Director Nuclear Plant Operations - B. Hickie
Member, Director Nuclear Operations Training - R. Widell
Independent Member, Chairman, Nuclear General Review Committee - J. MacKinnon

Restart Accountability Team

Regulatory issues leader - B. Gutherman
Operations issues leader - R. Davis
Maintenance/materiel condition issues leaders - J. Campbell, J. Terry
Design/extent of condition issues leader - F. Sullivan
Organizational and programmatic issues leader - D. Wilder
Schedule coordination leader - H. Koon

2. Expectations

Using NRC Inspection Manual Chapter 0350, and considering the documents listed in the Restart Review List, the Restart Panel will evaluate the issues against the Selection/Screening Criteria and a list of FPC restart issues will be developed. Revisions to the charter and panel composition will be approved by the Senior Vice President, Nuclear Operations. Revisions to the issues list will be approved by the Restart Panel chairman.

Restart Panel and Accountability Team members will assist in development of restart actions for their respective areas and assure a complete and auditable documentation file is assembled to facilitate closure of each action item assigned. The Restart Accountability Team members will provide frequent updates of the status of each restart action item for the Restart Panel. Immediate notification of potential emergent restart restraints will be made to the Restart Panel chairman.

The FPC Restart Panel will be the primary interface between the company and the NRC's Restart Panel. Prior to NRC review, the Restart Panel will assure each

U.S. Nuclear Regulatory Commission
3F1296-05
Attachment A

action item file is audited by FPC's Quality Programs Department and the results are presented to and approved by the Restart Panel members. Following satisfactory closure of the final restart action item, the Restart Panel chairman will recommend release for restart of the unit to the Senior Vice President, Nuclear Operations.

**RESTART ISSUES
SELECTION/SCREENING CRITERIA**

1. Required to directly address the purpose for outage extension (design margin improvement of selected safety systems).
2. Required to determine the "extent of condition" of our design issues.
3. Required to address organizational, programmatic, or process deficiency that led to the design margin condition.
4. Required to address a current operability issue.
5. Required to address a significant equipment materiel condition or reliability deficiency (especially repetitive failure).

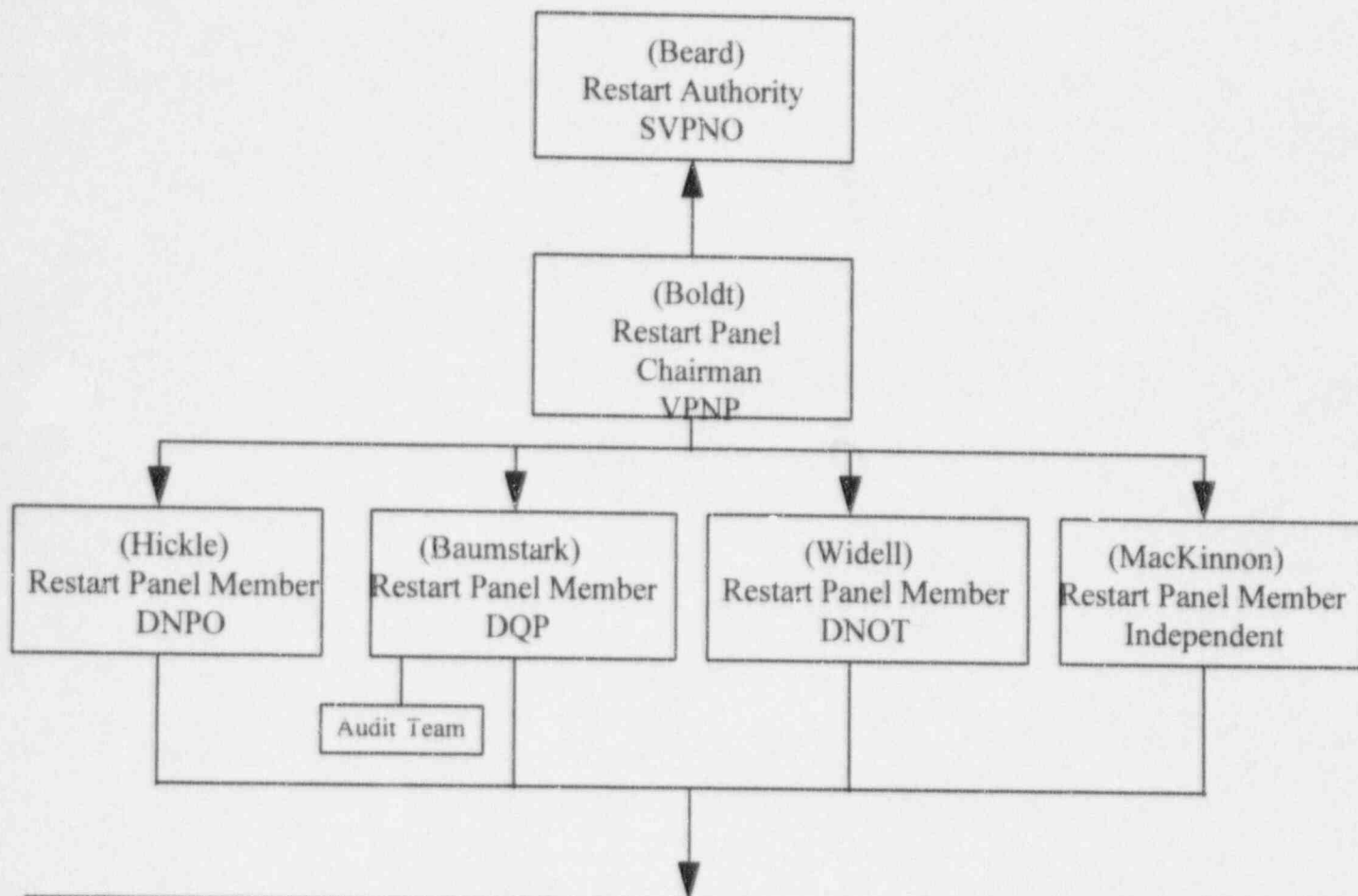
RESTART REVIEW LIST

- o Open precursor cards and problem reports
- o Open NRC items:
 - Violations
 - Unresolved items (URI's)
 - Inspector followup items (IFI's)
- o [NRC] Minutes of Crystal River Restart Panel First Meeting, November 13, 1996 - Attachment B, Crystal River 3 Issues Checklist
- o IPAP action list and proposed violations
- o Requests for engineering assistance (REA's)
- o Independent design review panel (IDRP) action list
- o Management corrective action plan (MCAP II) action list
- o Maintenance items
- o Key Focus Item list
- o License conditions
- o Complete review of Operator Workaroundlist
- o Open PRC/NGRC issues
- o Licensee event reports (LER's)
- o NRC commitments (NOCS)
- o B&W generic issues:
 - Decay heat dropline
 - LOCA induced mechanical fuel loading
 - OTSG primary/secondary coupling - EFP steam supply
 - OTSG tube primary boundary integrity
 - RCP bumping - recriticality
 - Wolf Creek sticking control rod applicability
 - Groove IGA applicability
- o Surveillance procedure - status to operate until Refuel 11
- o Organizational and Programmatic (O&P) issues:
 - Corrective action program
 - Root cause evaluation program
 - 10CFR50.59 evaluation program
 - Design basis program
 - Engineering calculation process
 - FSAR review program

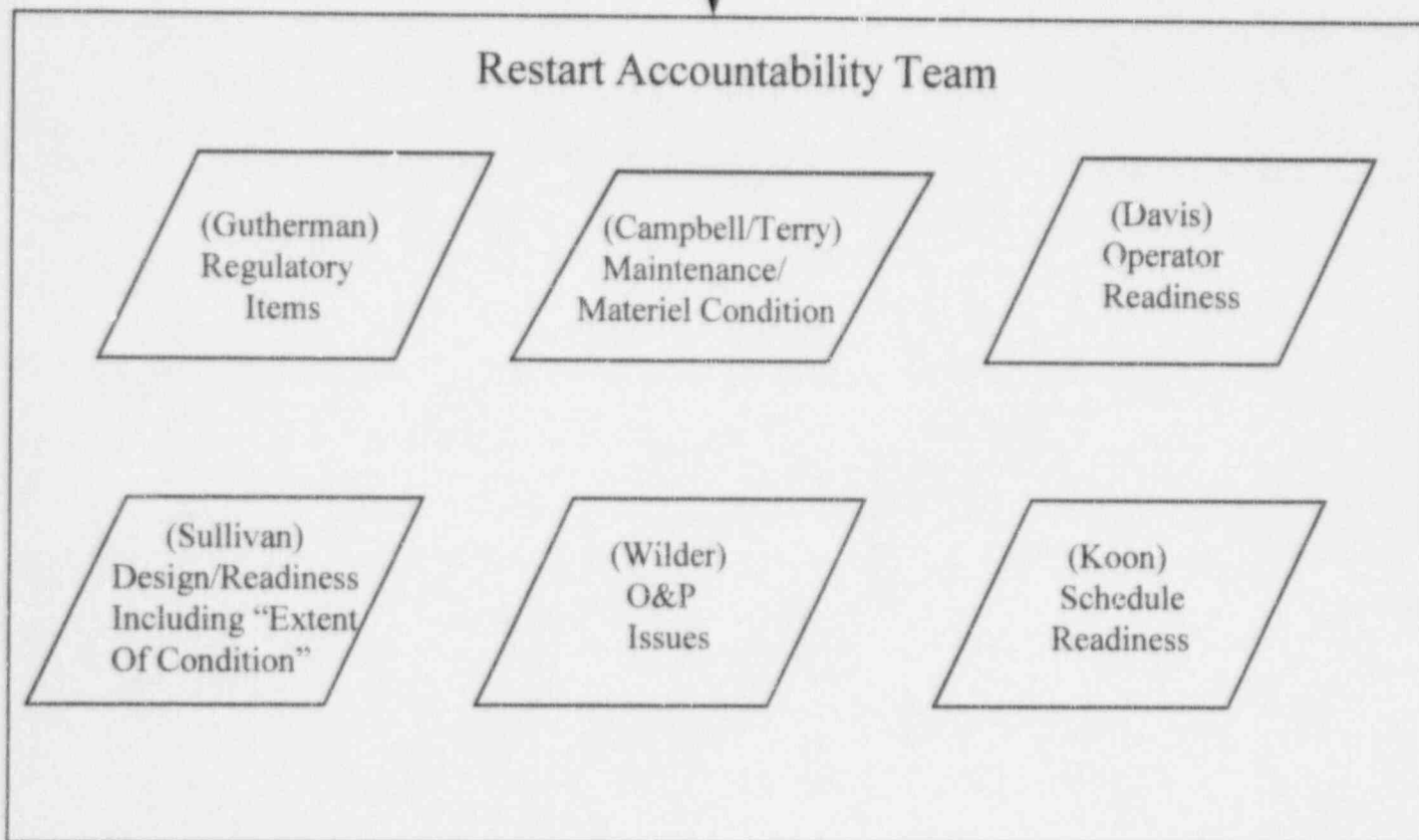
U.S. Nuclear Regulatory Commission
3F1296-05
Attachment A

- o OP/EOP/AP/SP changes
- o Amendments required:
 - Unresolved safety questions (USQ's)
 - Technical specification changes
 - License conditions
- o Restart procedure (AI-256) completion

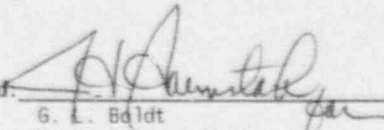
Restart Panel



Restart Accountability Team



RESTART ISSUES
 Regulatory Items - B. Gutherman

Approved: 
 G. L. Boldt
 Restart Panel Chairman

| ISSUE # | DESCRIPTION | ISSUE IDENTIFIER (*) | ACTION ASSIGNED TO | STATUS |
|---------|--|--|--------------------|--------|
| R-1 | GL 96-01 review. Address issues identified as a result of GL 96-01 reviews (SP-130). | GL 96-01 testing LER 96-011-00 LER 96-025-00 | J. Maseda | |
| R-2 | T.S. amendment(s) for EDG load uprate: - diesel generator load ratings - fuel storage - kw meters Supports resolution of EDG USQs through modifications. Involves changes to technical specifications and bases. (See item D-6) | LER 96-020-00 LER 96-025-00 | B. Gutherman | |
| R-3 | Complete maintenance rule structural baseline inspection of the RB. | N/A | J. Terry | |

Acronyms listed below correspond to those items listed in the Issue Identifier column

- (*)
- EEI - Escalated Enforcement Item
 - EA - Enforcement Action
 - IDRP - Independent Design Review Panel
 - IFI - Inspector Follow-up Item
 - IPAP - Integrated Performance Assessment Process
 - GL - Generic Letter
 - LER - Licensee Event Report
 - MCAP II - Management Corrective Action Plan, Phase II
 - OCR - Operability Concerns Resolution
 - PC - FPC Precursor Card
 - PR - FPC Problem Report
 - REA - Request for Engineering Assistance
 - WARN - FPC Workaroundlist
 - URI - Unresolved Item
 - VIO - Violation

December 11, 1996

| ISSUE # | DESCRIPTION | ISSUE IDENTIFIER (*) | ACTION ASSIGNED TO | STATUS |
|---------|--|--|--------------------|--------|
| R-4 | ASV-204 license amendment to resolve USQ. Supports resolution of USQ(s) generated as a result of these modifications. (See item D-5) | PR-96-0419 | B. Gutherman | |
| R-5 | DH-45-FI license amendment. Inoperable flow instrument contradicts license condition 2.C.(5). Resolution may require license amendment. | PR-96-0444 | B. Gutherman | |
| R-6 | FSAR table 8-1,8-2 update (EDG load listing). New loads are being calculated to support post-modification configuration. Revised FSAR table will be submitted prior to restart. | FPC letter to NRC 3F1196-01, dated November 18, 1996 FSAR Revision 23 | B. Gutherman | |

Acronyms listed below correspond to those items listed in the Issue Identifier column

(*) EEI - Escalated Enforcement Item
 EA - Enforcement Action
 IDRP - Independent Design Review Panel
 IFI - Inspector Follow-up Item
 IPAP - Integrated Performance Assessment Process
 GL - Generic Letter
 LER - Licensee Event Report
 MCAP II - Management Corrective Action Plan, Phase II
 OCR - Operability Concerns Resolution
 PC - FPC Precursor Card
 PR - FPC Problem Report
 REA - Request for Engineering Assistance
 WARN - FPC Workaroundlist
 URI - Unresolved Item
 VIO - Violation

December 11, 1996

| ISSUE # | DESCRIPTION | ISSUE IDENTIFIER (*) | ACTION ASSIGNED TO | STATUS |
|---------|--|---------------------------------|--------------------|--------|
| R-7 | Possible short term ITS change to allow DCV 17/18, 177/178 modification. Installation may simultaneously block valve control for two DH trains. Safest time to install is MODE 3 or higher, when RCPs are running and OTSG cooling is available. (See item D-10) | PR-96-0041 PR-96-0220 | B. Gutherman | |
| R-8 | Complete and submit the 10CFR50.54(f) letter response. | NRC letter to FPC dated 10/9/96 | R. Widell | |
| R-9 | Submit LPI mission time test results. (See item D-3) | PR-96-0311 | B. Gutherman | |
| R-10 | Submit and receive approval for T. S. amendment for ILRT, Appendix J, option B. | N/A | B. Gutherman | |

Acronyms listed below correspond to those items listed in the Issue Identifier column

- (*)
- EEI - Escalated Enforcement Item
 - EA - Enforcement Action
 - IDRP - Independent Design Review Panel
 - IFI - Inspector Follow-up Item
 - IPAP - Integrated Performance Assessment Process
 - GL - Generic Letter
 - LER - Licensee Event Report
 - MCAP II - Management Corrective Action Plan, Phase II
 - OCR - Operability Concerns Resolution
 - PC - FPC Precursor Card
 - PR - FPC Problem Report
 - REA - Request for Engineering Assistance
 - WARN - FPC Workaroundlist
 - URI - Unresolved Item
 - VIO - Violation

December 11, 1996

RESTART ISSUES
 Design Readiness/Extent of Condition Items - F. Sullivan

| ISSUE # | DESCRIPTION | ISSUE IDENTIFIER (*) | ACTION ASSIGNED TO | STATUS |
|---------|--|---|--------------------|--------|
| D-1 | HPI pump recirculation to the makeup tank. Changes needed to eliminate or control recirculation flow to MUT post-LOCA to prevent relief valve from lifting. | CR3 D.I.1 PR-96-0440 FPC letter to NRC 3F1096-22, dated 10/28/96, Item 1. | F. Sullivan | |
| D-2 | HPI system modifications to improve SBLOCA margins. Revise to close MUV-27 on 1500 psig HPI initiation signal instead of 4 psig RBIC signal. | CR3 D.I.2 LER 96-006-00 LER 96-006-01 IFI 96-003-16 FPC letter to NRC 3F1096-22, dated 10/28/96, Item 2. WARN #2 | F. Sullivan | |

Acronyms listed below correspond to those items listed in the Issue Identifier column

- (*)
- EEI - Escalated Enforcement Item
 - EA - Enforcement Action
 - IDRP - Independent Design Review Panel
 - IFI - Inspector Follow-up Item
 - IPAP - Integrated Performance Assessment Process
 - GL - Generic Letter
 - LER - Licensee Event Report
 - MCAP II - Management Corrective Action Plan, Phase II
 - OCR - Operability Concerns Resolution
 - PC - FPC Precursor Card
 - PR - FPC Problem Report
 - REA - Request for Engineering Assistance
 - WARN - FPC Workaroundlist
 - URI - Unresolved Item
 - VIO - Violation

December 11, 1996

| ISSUE # | DESCRIPTION | ISSUE IDENTIFIER (*) | ACTION ASSIGNED TO | STATUS |
|---------|--|---|--------------------|--------|
| D-3 | LPI pump mission time. Extend allowed low-flow time using test data and evaluation of results (pump teardown and inspection). | CR3 D.I.3 URI 96-201-01 OCR:DH-96-DHP-1A/1B-3 PR-96-0311 FPC to NRC letter 3F1096-22, dated 10/28/96, Item 3. | J. Terry | |
| D-4 | Reactor building spray pump 1B NPSH. Tear down pumps, perform flow test (and modify impeller, if required) to reduce NPSH required. | CR3 D.I.4 URI 96-201-02 OCR:BS-96-BSP-1B FPC to NRC letter 3F1096-22, dated 10/28/96, Item 4. | J. Terry | |

Acronyms listed below correspond to those items listed in the Issue Identifier column

- (*) EEI - Escalated Enforcement Item
 EA - Enforcement Action
 IDRP - Independent Design Review Panel
 IFI - Inspector Follow-up Item
 IPAP - Integrated Performance Assessment Process
 GL - Generic Letter
 LER - Licensee Event Report
 MCAP II - Management Corrective Action Plan, Phase II
 OCR - Operability Concerns Resolution
 PC - FPC Precursor Card
 PR - FPC Problem Report
 REA - Request for Engineering Assistance
 WARN - FPC Workaroundlist
 URI - Unresolved Item
 VIO - Violation

December 11, 1996

| ISSUE # | DESCRIPTION | ISSUE IDENTIFIER (*) | ACTION ASSIGNED TO | STATUS |
|---------|--|---|--------------------|--------|
| D-5 | Emergency feedwater system upgrades and diesel generator load impact: - cavitating venturis - automate cross tie valve EFV-12 - EFIC compensating module - Add ASV-204 "A" auto signal Reverses previous modification which removed "A"-side auto-start signal from steam inlet valve to "B"-side EFW pump. These modifications address the NPSH issue and/or reduce operator burden. | CR3 D.I.5 URI 96-12-01 VIO 96-09-07 PR-96-0419 FPC to NRC letter 3F1096-22, dated 10/28/96, Item 5. | F. Sullivan | |

Acronyms listed below correspond to those items listed in the Issue Identifier column

- (*)
- EEI - Escalated Enforcement Item
 - EA - Enforcement Action
 - IDRP - Independent Design Review Panel
 - IFI - Inspector Follow-up Item
 - IPAP - Integrated Performance Assessment Process
 - GL - Generic Letter
 - LER - Licensee Event Report
 - MCAP II - Management Corrective Action Plan, Phase II
 - OCR - Operability Concerns Resolution
 - PC - FPC Precursor Card
 - PR - FPC Problem Report
 - REA - Request for Engineering Assistance
 - WARN - FPC Workaroundlist
 - URI - Unresolved Item
 - VIO - Violation

December 11, 1996

| ISSUE # | DESCRIPTION | ISSUE IDENTIFIER (*) | ACTION ASSIGNED TO | STATUS |
|---------|--|--|--------------------|--------|
| D-6 | Emergency diesel generator loading: - capacity uprate - remove nonessential load(s) - kw meter accuracy improvement - CT/PT changes - Calibration equipment upgrade - extend the 30 minute rating to a 90 minute rating Increases the continuous 2000 hr. and 200 hr. ratings. Thirty (30) minute rating duration may be increased. Reduces connected load. Allows more accurate testing measurement of EDG output. | CR3 D.I.6 EEI 96-12-02 OCR:EG-96-EGDG-51A/1B LER 96-020-00 LER 96-025-00 FPC to NRC letter 3F1096-22, dated 10/28/96, Item 6. | F. Sullivan | |
| D-7 | Failure modes and effects analysis (FMEA) of loss of DC power. Extensive review of scenario creating several recent design basis problems. | CR3 D.I.7 FPC to NRC letter 3F1096-22, dated 10/28/96, Item 7. | J. Maseda | |

Acronyms listed below correspond to those items listed in the Issue Identifier column

(*) EEI - Escalated Enforcement Item
EA - Enforcement Action
IDRP - Independent Design Review Panel
IFI - Inspector Follow-up Item
IPAP - Integrated Performance Assessment Process
GL - Generic Letter
LER - Licensee Event Report
MCAP II - Management Corrective Action Plan, Phase II
OCR - Operability Concerns Resolution
PC - FPC Precursor Card
PR - FPC Problem Report
REA - Request for Engineering Assistance
WARN - FPC Workaroundlist
URI - Unresolved Item
VIO - Violation

December 11, 1996

| ISSUE # | DESCRIPTION | ISSUE IDENTIFIER (*) | ACTION ASSIGNED TO | STATUS |
|---------|--|--|--------------------|--------|
| D-8 | GL 96-06 (thermal overpressure protection for containment piping, penetrations, and coolers). Will address overpressure issue with hardware mods. Will evaluate and address susceptibility to other issues. | CR3 D.I.8 IFI 96-08-02 OCR: RB-96-penetrations FPC to NRC letter 3F1096-22, dated 10/28/96, Item 8. | F. Sullivan | |
| D-9 | Discrepancies in HPI design basis analysis. Re-confirm key hydraulic model inputs. | URI 96-01-02 | F. Sullivan | |
| D-10 | DCV 17/18, 177/178 positioners (Mode 3 or above). Addresses non-safety related controllers on SR valves. | URI 96-201-04 PR-96-0041 PR-96-0220 | K. Lancaster | |

Acronyms listed below correspond to those items listed in the Issue Identifier column

- (*)
- EEI - Escalated Enforcement Item
 - EA - Enforcement Action
 - IDRP - Independent Design Review Panel
 - IFI - Inspector Follow-up Item
 - IPAP - Integrated Performance Assessment Process
 - GL - Generic Letter
 - LER - Licensee Event Report
 - MCAP II - Management Corrective Action Plan, Phase II
 - OCR - Operability Concerns Resolution
 - PC - FPC Precursor Card
 - PR - FPC Problem Report
 - REA - Request for Engineering Assistance
 - WARN - FPC Workaroundlist
 - URI - Unresolved Item
 - VIO - Violation

December 11, 1996

| ISSUE # | DESCRIPTION | ISSUE IDENTIFIER (*) | ACTION ASSIGNED TO | STATUS |
|---------|--|-----------------------------|--------------------|--------|
| D-11 | Appendix R review: - transformer protection devices - hot short effect on remote S/D panel fuses - approval of NI detector TSI removal Addresses design/licensing basis issues found in Appendix R review. | VIO 96-06-06 | W. Rossfeld | |
| D-12 | EDG protective trips not bypassed during emergency mode of operation. New EDG trips added by plant modification not bypassed during emergency mode of operation. | IFI 96-201-14 PR-96-0263 | F. Sullivan | |
| D-13 | Develop system timelines for EF, MU, DH, BS, EG modifications, analysis and related Licensing correspondence. Extent of Condition element. | N/A | P. Tanguay | |
| D-14 | Re-perform the diesel loading calculation. Confirmation of existing calculation. | EEI 96-12-04 | F. Sullivan | |

Acronyms listed below correspond to those items listed in the Issue Identifier column

- (*)
- EEI - Escalated Enforcement Item
 - EA - Enforcement Action
 - IDRP - Independent Design Review Panel
 - IFI - Inspector Follow-up Item
 - IPAP - Integrated Performance Assessment Process
 - GL - Generic Letter
 - LER - Licensee Event Report
 - MCAP II - Management Corrective Action Plan, Phase II
 - OCR - Operability Concerns Resolution
 - PC - FPC Precursor Card
 - PR - FPC Problem Report
 - REA - Request for Engineering Assistance
 - WARN - FPC Workaroundlist
 - URI - Unresolved Item
 - VIO - Violation

December 11, 1996

| ISSUE # | DESCRIPTION | ISSUE IDENTIFIER (*) | ACTION ASSIGNED TO | STATUS |
|---------|---|----------------------|--------------------|--------|
| D-15 | Review a sample (20) of past modification 50.59's. Extent of Condition element. | N/A | R. Knoll | |
| D-16 | Perform an integrated safety assessment of current outage modifications. Back-end look at modifications made this outage to assess aggregate safety impact. | N/A | F. Sullivan | |
| D-17 | Complete NPSH review of EFP suction swapover from EFT to CST. Hydraulic issue. No check valves between tanks. | REA 96-0788 | F. Sullivan | |
| D-18 | Resolve NPSH concern when SFP's are used to recirc BWST. Hydraulic issue. LOCA during SFP recirculation of BWST would add to friction loss in a portion of one train's ECCS suction lines. | PR-96-0360 | G. Becker | |

Acronyms listed below correspond to those items listed in the Issue Identifier column

- (*)
- EEI - Escalated Enforcement Item
 - EA - Enforcement Action
 - IDRP - Independent Design Review Panel
 - IFI - Inspector Follow-up Item
 - IPAP - Integrated Performance Assessment Process
 - GL - Generic Letter
 - LER - Licensee Event Report
 - MCAP II - Management Corrective Action Plan, Phase II
 - OCR - Operability Concerns Resolution
 - PC - FPC Precursor Card
 - PR - FPC Problem Report
 - REA - Request for Engineering Assistance
 - WARN - FPC Workaroundlist
 - URI - Unresolved Item
 - VIO - Violation

December 11, 1996

| ISSUE # | DESCRIPTION | ISSUE IDENTIFIER (*) | ACTION ASSIGNED TO | STATUS |
|---------|---|-----------------------------|--------------------|--------|
| D-19 | Correct RMG-29/30 seismic mounting. Control board mounting of high-range containment radiation monitor instrumentation is not seismically qualified. | PR-96-0267 | F. Sullivan | |
| D-20 | Correct RWP cyclone separator fouling. SR seawater source of RWP bearing flush water. Addresses repetitive plugging of fouling/corrosion. | PR-96-0441 | F. Sullivan | |
| D-21 | ESCP-1 upgrade from non-safety to safety related. | PR-96-0195 LER 96-019-00 | F. Sullivan | |

Acronyms listed below correspond to those items listed in the Issue Identifier column

(*) EEI - Escalated Enforcement Item
 EA - Enforcement Action
 IDRP - Independent Design Review Panel
 IFI - Inspector Follow-up Item
 IPAP - Integrated Performance Assessment Process
 GL - Generic Letter
 LER - Licensee Event Report
 MCAP II - Management Corrective Action Plan, Phase II
 OCR - Operability Concerns Resolution
 PC - FPC Precursor Card
 PR - FPC Problem Report
 REA - Request for Engineering Assistance
 WARN - FPC Workaroundlist
 URI - Unresolved Item
 VIO - Violation

December 11, 1996

RESTART ISSUES
 Maintenance/Materiel Condition Items - J. Campbell/J. Terry

| ISSUE # | DESCRIPTION | ISSUE IDENTIFIER (*) | ACTION ASSIGNED TO | STATUS |
|---------|--|----------------------------|--------------------|--------|
| M-1 | Toxic gas monitoring (CL ₂ Channels) - Repetitive failures. | PR-96-0382 | J. Terry | |
| M-2 | Main control board deficiencies - too many. (Goal <10). Resolve all that can be resolved without de-fueling or having to be at power. | WARN #47 | J. Campbell | |
| M-3 | MUV-103 - repetitive seat leakage. | PR-96-0121 WARN #49 | J. Terry | |

Acronyms listed below correspond to those items listed in the Issue Identifier column

- (*)
- EEI - Escalated Enforcement Item
 - EA - Enforcement Action
 - IDRP - Independent Design Review Panel
 - IFI - Inspector Follow-up Item
 - IPAP - Integrated Performance Assessment Process
 - GL - Generic Letter
 - LER - Licensee Event Report
 - MCAP II - Management Corrective Action Plan, Phase II
 - OCR - Operability Concerns Resolution
 - PC - FPC Precursor Card
 - PR - FPC Problem Report
 - REA - Request for Engineering Assistance
 - WARN - FPC Workaroundlist
 - URI - Unresolved Item
 - VIO - Violation

December 11, 1996

| ISSUE # | DESCRIPTION | ISSUE IDENTIFIER (*) | ACTION ASSIGNED TO | STATUS |
|---------|---|---|--------------------|--------|
| M-4 | Surveillance (charcoal) testing complete on air handling system. | OCR: AH-96-AHFL-1 AH-96-AHFL-2A AH-96-AHFL-2B AH-96-AHFL-2C AH-96-AHFL-2D | J. Terry | |
| M-5 | Turbine lube oil piping failure analysis. Determine cause of piping failure and implement actions to prevent recurrence. | PR-96-0350 | J. Terry | |

Acronyms listed below correspond to those items listed in the Issue Identifier column

- (*)
- EEI - Escalated Enforcement Item
 - EA - Enforcement Action
 - IDRP - Independent Design Review Panel
 - IFI - Inspector Follow-up Item
 - IPAP - Integrated Performance Assessment Process
 - GL - Generic Letter
 - LER - Licensee Event Report
 - MCAP II - Management Corrective Action Plan, Phase II
 - OCR - Operability Concerns Resolution
 - PC - FPC Precursor Card
 - PR - FPC Problem Report
 - REA - Request for Engineering Assistance
 - WARN - FPC Workaroundlist
 - URI - Unresolved Item
 - VIO - Violation

December 11, 1996

RESTART ISSUES
 Organizational and Programmatic (O & P) Items - D. Wilder

| ISSUE # | DESCRIPTION | ISSUE IDENTIFIER (*) | ACTION ASSIGNED TO | STATUS |
|---------|---|------------------------|--------------------|--------|
| OP-1 | Improve safety culture: - establish site wide priorities which emphasize a safety culture - communicate, advertise, coach, and constantly reinforce safety culture down throughout the organization - conduct a Safety Culture Index which will be evaluated at periodic intervals | MCAP II | P. Beard | |
| OP-2 | Upgrade the problem reporting (CP-111) program. Eliminates problem reports and replaces with one graded precursor approach. | IPAP Report MCAP II | J. Baumstark | |

Acronyms listed below correspond to those items listed in the Issue Identifier column

- (*)
- EEI - Escalated Enforcement Item
 - EA - Enforcement Action
 - IDRP - Independent Design Review Panel
 - IFI - Inspector Follow-up Item
 - IPAP - Integrated Performance Assessment Process
 - GL - Generic Letter
 - LER - Licensee Event Report
 - MCAP II - Management Corrective Action Plan, Phase II
 - OCR - Operability Concerns Resolution
 - PC - FPC Precursor Card
 - PR - FPC Problem Report
 - REA - Request for Engineering Assistance
 - WARN - FPC Workaroundlist
 - URI - Unresolved Item
 - VIO - Violation

December 11, 1996

| ISSUE # | DESCRIPTION | ISSUE IDENTIFIER (*) | ACTION ASSIGNED TO | STATUS |
|---------|--|-------------------------------------|--------------------|--------|
| OP-3 | Upgrade the root cause (CP-144) program. | IPAP Report EEI 96-12-03 | J. Baumstark | |
| OP-4 | Upgrade the operability/reportability (CP-150/151) program. Separate and better define the two processes. Provide better guidance for decision making. | VIO 94-27-02 VIO 94-27-03 | R. Davis | |
| OP-5 | Upgrade the 50.59 review process. Improve program and provide training to the people to be qualified for writing and reviewing 50.59s. | EEI 96-12-03 | B. Gutherman | |
| OP-6 | Upgrade the engineering calculation process. Address issue of using unverified case studies. | EEI 96-12-04 EA 95-126 NOV I.D.1 | K. Baker | |

Acronyms listed below correspond to those items listed in the Issue Identifier column

(*) EEI - Escalated Enforcement Item
 EA - Enforcement Action
 IDRP - Independent Design Review Panel
 IFI - Inspector Follow-up Item
 IPAP - Integrated Performance Assessment Process
 GL - Generic Letter
 LER - Licensee Event Report
 MCAP II - Management Corrective Action Plan, Phase II
 OCR - Operability Concerns Resolution
 PC - FPC Precursor Card
 PR - FPC Problem Report
 REA - Request for Engineering Assistance
 WARN - FPC Workaroundlist
 URI - Unresolved Item
 VIO - Violation

December 11, 1996

| ISSUE # | DESCRIPTION | ISSUE IDENTIFIER (*) | ACTION ASSIGNED TO | STATUS |
|---------|---|------------------------------|--------------------|--------|
| OP-7 | Upgrade the design basis program to include: - ownership - definition - documents included in scope (clearly define intent) | IDRP Report IPAP Report | K. Baker | |
| OP-8 | Establish a high-level configuration control procedure (NOD). Establish and document management expectations for the program. | VIO 96-05-05 VIO 96-09-06 | K. Baker | |

Acronyms listed below correspond to those items listed in the Issue Identifier column

(*) EEI - Escalated Enforcement Item
 EA - Enforcement Action
 IDRP - Independent Design Review Panel
 IFI - Inspector Follow-up Item
 IPAP - Integrated Performance Assessment Process
 GL - Generic Letter
 LER - Licensee Event Report
 MCAP II - Management Corrective Action Plan, Phase II
 OCR - Operability Concerns Resolution
 PC - FPC Precursor Card
 PR - FPC Problem Report
 REA - Request for Engineering Assistance
 WARN - FPC Workaroundlist
 URI - Unresolved Item
 VIO - Violation

December 11, 1996

RESTART ISSUES
 Operator Readiness Items - R. Davis

| ISSUE # | DESCRIPTION | ISSUE IDENTIFIER (*) | ACTION ASSIGNED TO | STATUS |
|---------|---|---|--------------------|--------|
| 0-1 | OP-103 A&B curves - need to be validated. Verify and validate whether curves are design basis and what that basis is. | URI 96-201-03 URI 96-201-05 EA 95-126 NOV I.C.2 WARN #21 & #24 | J. Maseda | |
| 0-2 | - Verify SP's for containment integrity; SP-324, 341, 346. - Develop new detailed as-built mechanical penetration drawings. - Address tests, vents, and drains issue. | LER 96-018-00 LER 96-018-01 | J. Maseda | |
| 0-3 | Complete operator training on EOP/AP/OP changes resulting from restart issues. | N/A | R. Davis | |

Acronyms listed below correspond to those items listed in the Issue Identifier column

- (*) EEI - Escalated Enforcement Item
 EA - Enforcement Action
 IDRP - Independent Design Review Panel
 IFI - Inspector Follow-up Item
 IPAP - Integrated Performance Assessment Process
 GL - Generic Letter
 LER - Licensee Event Report
 MCAP II - Management Corrective Action Plan, Phase II
 OCR - Operability Concerns Resolution
 PC - FPC Precursor Card
 PR - FPC Problem Report
 REA - Request for Engineering Assistance
 WARN - FPC Workaroundlist
 URI - Unresolved Item
 VIO - Violation

December 11, 1996