



A Centerior Energy Company

EDISON PLAZA
300 MADISON AVENUE
TOLEDO, OHIO 43652-0001

December 12, 1996

Ms. Elizabeth Wick, Group Leader
Ohio Environmental Protection Agency
Northwest District Office
347 North Dunbridge Road
Bowling Green, Ohio 43402

Dear Ms. Wick:

Subject: Submittal of the November 1996 Telecommunicated Hardcopy Wastewater Report

Attached is a hardcopy of the telecommunicated November 1996 Wastewater Report for the Davis-Besse Nuclear Power Station (DBNPS), Unit Number 1, Permit Number 2IB00011*FD.

If you have any questions, please contact Mr. James L. Freels, Manager - Regulatory Affairs, at (419) 321-8466.

Sincerely yours,

A handwritten signature in cursive script that reads 'JH Lash'.

James H. Lash
Plant Manager
Davis-Besse Nuclear Power Station

TKW/lkm

Attachments

cc: Z. A. Clayton, Ohio Environmental Protection Agency
U. S. Nuclear Regulatory Commission Document Control Desk

IR25 1/1

9612240148 961130
PDR ADOCK 05000346
R PDR

TOLEDO EDISON/DAVIS-BESSE

2IB00011001 NOV 1996

1 1 12/05/96 2IB000

300 MADISON AV. MSTOP 2101 001 DISCHARGE TO LAKE ERIE
TOLEDO 43652 OTTAWA

FORM

TOLEDO EDISON

T. WASCH

	1 999	3 001	1 999	3 001
	WATER TEMP. F	PH S.U.	CONDUI FLOW MGD	CHLORI TOT RE MG/L
DAY	00011	00400	50050	50060
01	51.8	8.7	25.9	AA
02	50.4	AN	25.2	AN
03	49.7	AN	25.6	AN
04	50.4	8.6	25.9	AA
05	52.0	8.6	21.3	AA
06	54.3	8.7	26.5	AA
07	56.4	8.7	25.2	AA
08	52.9	8.6	25.2	AA
09	51.9	AN	25.4	AN
10	49.9	AN	25.3	AN
11	48.1	8.4	25.1	AA
12	47.5	8.6	25.2	AA
13	44.2	8.5	34.5	AA
14	45.8	8.5	25.5	AA
15	47.3	8.4	16.6	AA
16	49.2	AN	9.7	AN
17	51.4	AN	8.1	AN
18	48.8	8.6	8.1	AA
19	48.2	8.6	8.6	AA
20	46.9	8.6	10.4	AA
21	47.0	8.5	8.1	AA
22	46.9	8.6	8.1	AA
23	47.2	AN	8.1	AN
24	47.6	AN	8.1	AN
25	47.2	8.7	9.3	AA
26	46.2	8.6	9.1	AA
27	44.7	8.6	8.1	AA
28	45.4	AN	8.2	AN
29	46.2	AN	8.1	AN
30	48.6	AN	8.0	AN
31				
TOTAL	1464.1	163.10	506.50	AA
Avg	48.803	8.5842	16.883	AA
MAX	56.400	8.7000	34.500	AA
MIN	44.200	8.4000	8.0000	AA

AA: The Total Residual Chlorine detection limit is 0.05 mg/L using the direct amperometric method.

DISTRIBUTION
WHITE - ASSISTANT
GREEN - REPORTER

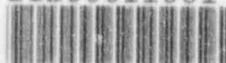
FORM NO EPA 815-B-82-001
FORMS 1 & 2 ONLY

12/12/96

JH Wash

Plant Manager

2IB00011001



TOLEDO EDISON/DAVIS-BESSE

2IB00011002 NOV 1996

1 1 12/05/96 2IB000

300 MADISON AV. MSTOP 2101 002 OUTFALL TOUSSAINT RIVER
TOLEDO 43652 OTTAWA

FORM

TOLEDO EDISON

T. WASCH

	3 001	3 001	3 001	1 999
	PH	RESIDU TOT NF	OIL GR TOTAL	CONDUI FLOW
	S.U.	MG/L	MG/L	MGD
	00400	00530	00550	50050
01				.068
02				.068
03				.068
04	8.1			.620
05				.068
06		8		.068
07			3	.068
08				.500
09				.068
10				.068
11				.068
12				.068
13	8.0			.068
14		4	AA	.068
15				.068
16				.068
17				.068
18				.068
19	8.1	1		.068
20			3	.068
21				.068
22				.068
3				.068
4				.074
25	8.1			.080
26		9		.068
27			2	.068
28				.068
29				.074
30				.068
31				
	32.300	22.000	8.0000	3.0480
	8.0750	5.5000	2.0000	0.1016
	8.1000	9.0000	3.0000	0.6200
	8.0000	1.0000	AA	0.0680

AA: The detection limit for Oil and Grease is 1.0 mg/L using the partition-gravimetric method.

TOLEDO EDISON/DAVIS-BESSE

2IB00011003 NOV 1996

1 1 12/05/96 2IB000

300 MADISON AV. MSTOP 2101 003 OUTFALL NAVARRE MARSH
TOLEDO 43652 OTTAWA

FORM

TOLEDO EDISON

T. WASCH

3 1
001 999

RESIDU CONDUI
TOT NF FLOW
MG/L MGD

00530 50050

01		.222
02		.222
03		.222
04		.222
05		.222
06	13	.222
07		.222
08		.222
09		.222
10		.222
11		.222
12		.222
13		.222
14		.222
15		.222
16		.222
17		.222
18		.222
19		.222
20		.222
21		.222
22		.222
23		.222
24		.222
25		.222
26		.222
27		.222
28		.222
29		.222
30		.222
31		

13.000	6.6600
13.000	0.2220
13.000	0.2220
13.000	0.2220

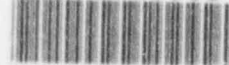
DISTRIBUTION
WHITE REPORTER

12/12/96

J. Prisk

Plant Manager

2IB00011003



TOLEDO EDISON/DAVIS-BESSE

2IB00011601 NOV 1996

1 1 12/05/96 2IB000

300 MADISON AV. MSTOP 2101 601 DISCHARGE STP
TOLEDO 43652 OTTAWA

FORM

TOLEDO EDISON

T. WASCH

	3 001	3 001	3 001	3 001	3 001	3 001
	COLOR SEVERI UNITS	ODOR SEVERI UNITS	TURBID SEVERI UNITS	CONDUI FLOW MGD	BOD 5 DAY MG/L	RESIDU TOT NF MG/L
	00083	01330	01350	50050	00310	00530
01	2	1	1	.021		
02	AN	AN	AN	.029		
03	AN	AN	AN	.029		
04	1	0	1	.029		
05	2	0	1	.025	15	
06	1	0	1	.026		21
07	1	0	1	.015		
08	1	0	1	.015		
09	AN	AN	AN	.019		
10	AN	AN	AN	.019		
11	1	0	1	.019		
12	1	0	1	.021	7	
13	1	0	1	.021		11
14	1	0	1	.015		
15	1	0	1	.027		
16	AN	AN	AN	.027		
17	AN	AN	AN	.027		
18	1	0	0	.027		
19	1	0	0	.019	5	5
20	1	0	0	.019		
21	1	0	0	.013		
22	1	0	0	.013		
23	AN	AN	AN	.025		
24	AN	AN	AN	.025		
25	1	0	0	.025		
26	1	0	0	.014	AA	6
27	1	0	0	.014		
28	AN	AN	AN	.023		
29	AN	AN	AN	.023		
30	AN	AN	AN	.023		
31						

21.000	1.0000	11.000	0.6470	27.000	43.000
1.1053	0.0520	0.5789	0.0216	6.7500	10.750
2.0000	1.0000	1.0000	0.0290	15.000	21.000
1.0000	0.0000	0.0000	0.0130	AA	5.0000

AA: The detection limit for Biochemical Oxygen Demand (BOD) is 4.0 mg/L.

REPORTER

12/12/96

JH Wash

PLANT MANAGER

2IB00011601



TOLEDO EDISON/DAVIS-BESSE

2IB00011602 NOV 1996

1 1 12/05/96 2IB000

300 MADISON AV. MSTOP 2101 602 LOW VOLUME WW SETTLING BASIN OVERFLOW
TOLEDO 43652 OTTAWA

FORM

TOLEDO EDISON

T. WASCH

	1 999	3 001	3 001
	CONDUI FLOW MGD	RESIDU TOT NF MG/L	OIL GR TOTAL MG/L
	50050	00530	00550
01	.617		
02	.617		
03	.617		
04	.617		
05	.617		
06	.617	3	
07	.617		1
08	.617		
09	.617		
10	.617		
11	.617		
12	.617		
13	.617		
14	.617		
15	.617		
16	.617		
17	.617		
18	.617		
19	.617	7	
20	.617		1
21	.617		
22	.617		
23	.617		
24	.617		
25	.617		
26	.617		
27	.617		
28	.617		
29	.617		
30	.617		
31			
	18.510	10.000	2.0000
	0.6170	5.0000	1.0000
	0.6170	7.0000	1.0000
	0.6170	3.0000	1.0000

REPORTER

12/12/96

JH Wasch

PLANT MANAGER

2IB00011602



TOLEDO EDISON/DAVIS-BESSE

2IB00011801 NOV 1996

1 1 12/05/96 2IB000

300 MADISON AV. MSTOP 2101 801 INTAKE PRIOR COOLING OPERATION
TOLEDO 43652 OTTAWA

FORM

TOLEDO EDISON

T. WASCH

1
999

WATER
TEMP.
F

00011

01	47.7
02	46.6
03	44.6
04	43.9
05	44.5
06	45.2
07	47.0
08	47.3
09	47.0
10	45.6
11	43.6
12	43.5
13	40.4
14	41.3
15	42.6
16	43.0
17	42.8
18	43.2
19	43.4
20	42.6
21	42.1
22	41.6
23	41.2
24	41.0
25	40.9
26	40.6
27	40.3
28	39.4
29	39.0
30	39.0
31	

1290.9
43.030
47.700
39.000

DISTRICT
WATER AGENCY
TOLSON REPORTER

CERTIFY UNDER THE PENALTY OF LAW THAT THE INFORMATION CONTAINED HEREIN IS TRUE AND CORRECT TO THE BEST OF YOUR KNOWLEDGE AND BELIEF.
DATE REPORT COMPLETED

12/12/96

JH Wash

PLANT MANAGER

2IB00011801

