



UNITED STATES
NUCLEAR REGULATORY COMMISSION
WASHINGTON, D. C. 20555

SAFETY EVALUATION BY THE OFFICE OF NUCLEAR REACTOR REGULATION
RELATED TO AMENDMENT NO. 25 TO FACILITY OPERATING LICENSE NO. DPR-75

PUBLIC SERVICE ELECTRIC AND GAS COMPANY
PHILADELPHIA ELECTRIC COMPANY
DELMARVA POWER AND LIGHT COMPANY, AND
ATLANTIC CITY ELECTRIC COMPANY

SALEM NUCLEAR GENERATION STATION, UNIT NO. 2

DOCKET NO. 50-311

Introduction

In a May 31, 1983 letter to Public Service Electric and Gas Company (PSE&G), the NRC directed that PSE&G provide a request to amend the Unit 2 license to provide completion dates for fire protection modifications on Unit 2. These were the same modifications as were required on Unit 1 plus one additional modification in fire area P2G-1. This amendment then, would modify License Condition 2.C.10 by adding the following two fire protection commitments regarding 10 CFR 50, Appendix R, Section III.G requirements:

- 2.C.(10)(i) Prior to startup following the second refueling outage, PSE&G shall install smoke detectors in fire areas designated P2C-1, P2C-3, P2C-4, P2C-5, P2F-1, and P2G-1.
- 2.C.(10)(j) Prior to startup following the second refueling outage, PSE&G shall wrap, with FS195, 1 hour fire barrier material, B Diesel control cable tray 2A217 between trays 2A258 and 2A218 in area P2H-1.

Evaluation and Summary

The above action satisfies our position regarding the implementation of fire protection requirements on Salem Unit 2 and responds to our letter dated May 31, 1983.

Environmental Consideration

This amendment involves a change in the installation or use of a facility component located within the restricted area as defined in 10 CFR Part 20. The staff has determined that the amendment involves no significant increase in the amounts, and no significant change in the types, of any effluents that may be released offsite, and that there is no significant increase in

individual or cumulative occupation radiation exposure. The Commission has previously issued a proposed finding that this amendment involves no significant hazards consideration and there has been no public comment on such finding. Accordingly, this amendment meets the eligibility criteria for categorical exclusion set forth in 10 CFR Sec 51.22(c)(9). Pursuant to 10 CFR 51.22(b) no environmental impact statement or environmental assessment need be prepared in connection with the issuance of this amendment.

Conclusion

We have concluded, based on the considerations discussed above, that: (1) there is reasonable assurance that the health and safety of the public will not be endangered by operation in the proposed manner, and (2) such activities will be conducted in compliance with the Commission's regulations and the issuance of this amendment will not be inimical to the common defense and security or to the health and safety of the public.

Dated: August 30, 1984

Principal Contributor:

D. C. Fischer



Commonwealth Edison
 One First National Plaza Chicago Illinois
 Address Reply to Post Office Box 767
 Chicago Illinois 60690

July 30, 1984

Mr. Harold R. Denton, Director
 Office of Nuclear Reactor Regulation
 U.S. Nuclear Regulatory Commission
 Washington, DC 20555

Subject: LaSalle County Station Units 1 and 2
 Baseline Inspection Report ASME
 Section XI Update, with Authorized
 Inspector Signatures
NRC Docket Nos. 50-373 and 50-374

Reference (a): C. W. Schroeder letter to H. R. Denton
 dated February 22, 1984.

(b): C. W. Schroeder letter to H. R. Denton
 dated March 26, 1984.

Dear Mr. Denton:

Enclosed please find three (3) copies each of revisions to
 the Unit 1 and Unit 2 Baseline Inspection Report (ASME Section XI).
 These changes correct deficiencies noted during a Commonwealth
 Edison Company Audit and include Authorized Inspector Signatures.
 Also included are directions for updating of each report.

Enclosed for your use are also one signed original and forty
 (40) copies of this letter.

If there are any other questions in this matter, please
 contact this office.

Very truly yours,

J G Marshall

J. G. Marshall
 Nuclear Licensing Administrator

Wb/1002

1m

1000000000
~~1080600005~~

cc: NRC Resident Inspector - LSCS



3.
 A047
 ih

LaSalle

ATTACHMENT

PSI REPORT (2) UPDATE (29-84)

Unit 2
75 (84-29)

VOLUME 1 - SECTION 4.1

REMOVE

INSERT

Tab 4.1

Personnel Certification Index
Page 4 of 5

Corrected Personnel Certification
Index Page 4 of 5

VOLUME 2 - SECTION 4.1

REMOVE

INSERT

Tab 4.1

Personnel Certification Index
Rev. 0 Pages 1 thru 4

Personnel Certification Index
Rev. 1 Pages 1 thru 5

VOLUME 3 - SECTION 4.1

REMOVE

INSERT

Tab 4.1

Personnel Certification Index
Rev. 0 Pages 1 thru 4

Personnel Certification Index
Rev. 1 Pages 1 thru 5

Tab 91

Personnel Certification for
G. Craigo Pages 1 thru 27

Letter of Explanation

VOLUME 4 - SECTION 6.3

REMOVE

INSERT

Tab 6.2

P.T. Product Spec. March 5, 1979

Signed P.T. Product Spec. March 5, 1979

Tab 6.3

- RIR - 001
- RIR - 002
- RIR - 003
- RIR - 004
- RIR - 005
- RIR - 006A
- RIR - 006B
- RIR - 007
- RIR - 008

- Signed RIR - 001
- Signed RIR - 002
- Signed RIR - 003
- Signed RIR - 004
- Signed RIR - 005
- Signed RIR - 006A
- Signed RIR - 006B
- Signed RIR - 007
- Signed RIR - 008

VOLUME 5 - SECTION 8.0

REMOVE

INSERT

Tab 8.0

N/A

PreService Inspection Records Index

VOLUME 5 - SECTION 10.0

REMOVE

INSERT

Tab 10.0

N/A

Inspection Check Lists Index

VOLUME 5 - SECTION 10.2

REMOVE

INSERT

Tab 10

Information letter for Jet Pump
Beam Examination

Revised Information letter and 6 pages
of Support Documentations.

Tab 14

GEL-1061 Page 1 of 3

Corrected GEL-1061 Page 1 of 3

Tab 16

N/A

IRH-HX2AV Rev. 0 Page 1 of 1

Tab 17

N/A

IRH-HX2BV Rev. - Page 1 of 1

VOLUME 5 - SECTION 10.3

REMOVE

INSERT

Tab 1

N/A

IHP-PU2V Rev. 0 Page 1 of 1

Tab 2

N/A

ILP-PU2V Rev. 0 Page 1 of 1

Tab 3

N/A

IRH-PU2AV Rev. 0 Page 1 of 1

Tab 4

N/A

IRH-PU2BV Rev. 0 Page 1 of 1

Tab 5

N/A

IRH-PU2CV Rev. 0 Page 1 of 1

ATTACHMENT
PSI REPORT (2) UPDATE (29-84)

page 3 of 5

VOLUME 5 - SECTION 10.3 (cont'd)

REMOVE

INSERT

Tab 6

N/A

IRI-PU2B Rev. 0 Page 1 of 1

VOLUME 5 - SECTION 10.4

REMOVE

INSERT

Tab 1

IFW-2001 Rev. 3 Page 5 of 5

Corrected IFW-2001 Rev. 3 Page 5 of 5

Tab 2

IFW-2002 Rev. 3 Page 4 of 5

Corrected IFW-2002 Rev. 3 Page 4 of 5

IFW-2002 Rev. 1 Page 5 of 5

Corrected IFW-2002 Rev. 1 Page 5 of 5

Tab 32

IMS-2004 Rev. 2 Page 2 of 4

Corrected IMS-2004 Rev. 2 Page 2 of 4

Tab 41

IMS-2044 Rev. 0 Page 1 of 1

Corrected IMS-2044 Rev. 0 Page 1 of 1

Tab 49

IMS-2054I Rev. 0 Page 1 of 1

Revised IMS-2054I Rev. 1 Page 1 of 1

Tab 51

N/A

INB-2001B Rev. 0 Page 1 of 1

Tab 52

GEL-1102

GEL-¹¹⁰¹~~1102~~ 2RD0022-1 @ 90°

Tab 53

GEL-1101

GEL-1102 2RD0022-2 @ 270°

VOLUME 6 - SECTION 10.4

REMOVE

INSERT

Tab 132

IRR-2006 Rev. 0 Page 1 of 4

Corrected IRR-2006 Rev. 0 Page 1 of 4

IRR-2006 Rev. 0 Page 2 of 4

Corrected IRR-2006 Rev. 0 Page 2 of 4

IRR-2006 Rev. 0 Page 3 of 4

Corrected IRR-2006 Rev. 0 Page 3 of 4

IRR-2006 Rev. 0 Page 4 of 4

Corrected IRR-2006 Rev. 0 Page 4 of 4

VOLUME 6 - SECTION 11.3

REMOVE

INSERT

Tab 11

Nonconformity Report 2NCR-11
page 1 of 9

Revised Nonconformity Report 2NCR-11
page 1 of 9

VOLUME 9 - SECTION 12.2

REMOVE

INSERT

Tab 4

UT EDS #4381 Page 2 of 2

Plot for EDS #4381 Page 1 of 2
Plot for EDS #4381 Page 2 of 2

Signed UT Exam Data Sheet EDS #4381
Page 2 of 2
Signed Plot for EDS #4381 Page 1 of 2
Signed Plot for EDS #4381 Page 2 of 2

Tab 5

UT CDS #5298

Corrected UT Calibration Data Sheet
CDS #5298

VOLUME 12 - SECTION 12.2

REMOVE

INSERT

Tab 14

UT EDS #18379
Plot for EDS #18379
UT EDS #18380

Signed UT Exam Data Sheet #18379
Signed Plot for EDS #18379
Signed UT Exam Data Sheet #18380

VOLUME 14 - SECTION 12.2

REMOVE

INSERT

Tab 25

N/A

VT Exam Data Sheet #40002 Pages 1 and 2

VOLUME 15 - SECTION 10.6

REMOVE

INSERT

Exempt IMS-2016S Page 1 of 3
Exempt IMS-2016S Page 2 of 3

Signed Exempt IMS-2016S Page 1 of 3
Signed Exempt IMS-2016S Page 2 of 3

ATTACHMENT
PSI REPORT (2) UPDATE (29-84)

page 5 of 5

VOLUME 15 - SECTION 12.2

REMOVE

INSERT

Tab 33

PSI Reference No. 2MS-98
PSI Reference No. 2MS-99

Signed PSI Reference No. 2MS-98
Signed PSI Reference No. 2MS-99

VOLUME 16 - SECTION 13.7

REMOVE

INSERT

Tab 9

N/A

1984 Correspondence

VOLUME 16 - SECTION 13.8

REMOVE

INSERT

Tab 13.8

Internal Audits Index

Revised Internal Audits Index

Tab 1

N/A

Internal Audit performed on May 9 & 10,
1984 3 pages

Tab 2

N/A

Internal Audit performed on February 23
& 24, 1984 3 pages

4.1 PERSONNEL CERTIFICATION (Unit II)

NAME	TAB	CERTIFICATION PROGRAM		LEVEL QUALIFICATION				
				RT	UT	PT	MT	VT
J. Amburgey	1	NDE-PQ-8000	Rev. 5			I-T		
R. Blackinton	2	MAC-77-026	Rev. 4		II	II		
L. Bowne	3	MAC-77-026	Rev. 4		II	II		
P. Cox	4	MAC-77-026	Rev. 4		II	II		
G. Craigo	5	NDE-PQ-8000	Rev. 5		I-T	II		
R.G. Conway	6	MAC-77-026	Rev. 4		II	II		
J.R. Decker	7	ASBD-NDT-1101	Rev. 2		II	II	II	
G.L. Fey	8	MAC-77-026	Rev. 4		I-T	II		
T.C. Hall	9	NDE-PQ-8000	Rev. 5			I-T		
M.P. Hart	10	ASBD-NDT-1101	Rev. 2	III	III	III	III	
H. Kloster	11	MAC-77-026	Rev. 4		II	II		
M.A. Metzger	12	NDE-PQ-8000	Rev. 5			I-T		
P.K. Olsen	13	MAC-77-026	Rev. 4		III	III	III	
S.R. Reeves	14	NDE-PQ-8000	Rev. 5			I-T		
R.S. Rather	15	NDE-PQ-8000	Rev. 5		I-T	I		
L.W. Wheatley	16	NDE-PQ-8000	Rev. 5	III	III	III	III	III
D. Tellier	17	MAC-77-026	Rev. 4			II		
T. Yurik	18	MAC-77-026	Rev. 4		I	II		
G.C. Zettel	19	NDE-PQ-8000	Rev. 5			I-T		
B. Dummer	20	ASBD-NDT-1101 QCi 2.1	Rev. 2 Rev. 0		II II	II II	II II	II
S. Connelly	21	NDE-PQ-8000	Rev. 5		I-T			
L. Bell	22	MAC-77-026	Rev. 4			II		

4.1 PERSONNEL CERTIFICATION (Unit II)

<u>NAME</u>	<u>TAB</u>	<u>CERTIFICATION PROGRAM</u>		<u>LEVEL QUALIFICATION</u>				
				<u>RT</u>	<u>UT</u>	<u>PT</u>	<u>MT</u>	<u>VT</u>
M. Heath	23	ASBD-NDT-1101	Rev. 2		II	II		
S. Mortenson	24	ASBD-NDT-1101	Rev. 2		II	II	II	
F. Johnston	25	ASBD-NDT-1101	Rev. 2		I-T	II	II	
D. Litzler	26	ASBD-NDT-1101	Rev. 2			II		
D. Tucker	27	ASBD-NDT-1101	Rev. 2			II		
A. Sarno	28	ASBD-NDT-1101	Rev. 2		I	II		
J. Wojcik	29	ASBD-NDT-1101	Rev. 2		I	II		
L. Richardson	30	ASBD-NDT-1101	Rev. 2		I-T	I		
B. Warchuck	31	ASBD-NDT-1101	Rev. 2		II	II		
N. Hansen	32	ASBD-NDT-1101	Rev. 2		II	II	II	
D. Percival	33	ASBD-NDT-1101	Rev. 2		I-T	II		
C. Mills	34	ASBD-NDT-1101	Rev. 2		II	II	II	
D. Holthaus	35	ASBD-NDT-1101	Rev. 2		III	III	III	
R. Schmidt	36	ASBD-NDT-1101	Rev. 2		I	II		
C.I. Bonzo	37	ASBD-NDT-1101	Rev. 2			II		
F. Bernardo	38	ASBD-NDT-1101	Rev. 2		I			
R. Bogues	39	ASBD-NDT-1101	Rev. 2		I-T	II		
G. Webb	40	ASBD-NDT-1101	Rev. 2		I-T			
T. Telder	41	NDT Services	Part VI		II	II		
L. Schmitgal	42	NDT Services	Part VI		II	II		
K. Cutright	43	NDT Services	Part VI		II	II		
L. Frederick	44	NDT Services	Part VI		II	II		
R.L. McClain	45	TEI-A-07	Rev. 1		I	II		

4.1 PERSONNEL CERTIFICATION (Unit II)

NAME	TAB	CERTIFICATION PROGRAM		LEVEL QUALIFICATION				
				RT	UT	PT	MT	VT
D.W. Frazier	46	TEI-A-07	Rev. 1		II	II		
J.M. Case	47	TEI-A-07	Rev. 1		II	II		
T.A. Holcombe	48	TEI-A-07	Rev. 1		II	II		
R. Palmer	49	TEI-A-07	Rev. 1		II	II		
L. McClain	50	TEI-A-07	Rev. 1		II	II		
S. Razi	51	ASBD-NDT-1101	Rev. 2	III	III	III	III	
R. Pietzak	52	NDT Services	Part VI		II	II		
S. Herman	53	TEI-A-07	Rev. 1		II	II		
L. Holcombe	54	TEI-A-07	Rev. 1		II	II		
R. Cram	55	TEI-A-07	Rev. 1		I			
J. Sheldon	56	TEI-A-07	Rev. 1		I-T	II		
D. Mecklenburg	57	TEI-A-07	Rev. 1		I	II		
R. Austin	58	NDT Services	Part VI		I-T	II		
S. Volk	59	NDT Services	Part VI		II	II	II	
R. May	60	386HA480	Rev. 2		I-T			
E. Gaylean	61	386HA480	Rev. 2		I-T			
P. Ramsey	62	386HA480	Rev. 2		II			
J. Albaneese	63	386HA480	Rev. 2		II			
R. Hooper	64	NDE-PQ-8000	Rev. 5		II	I		
E. Lake	65	NDT Services	Part VI		I	I-T		
A. Homler	66	NDT Services	Part VI		II	II		
R. Clarke	67	NDT Services	Part VI		I-T	I-T		
T. Dykes	68	NDT Services	Part VI		I-T	I-T		

4.1 PERSONNEL CERTIFICATION (Unit II)

NAME	TAB	CERTIFICATION PROGRAM	LEVEL QUALIFICATION					
			RT	UT	PT	MT	VT	
B. Shields	69	NDT Services	Part VI	I-T	I-T			
D. Voget	70	386HA480	Rev. 2	II				
T. Le	71	386HA480	Rev. 2	II				
W. Mason	72	386HA480	Rev. 2	I-T				
T. Daly	73	NDT-1006	Rev. 2	I-T	I-T			
C. Pendergrass	74	386HA480	Rev. 2	I-T				
J. Story	75	NDT Services	Part VI	II	II			
J. Craig	76	NDT-1006	Rev. 2	II	II			
J. Briggs	77	QC-3-380	Rev. 2	II	II			
J. Abrigo	78	NDT-1006	Rev. 2	II	II	II		
D. Bryant	79	NDE-PQ-8002	Rev. 0					II
M. Patch	80	NDE-PQ-8002	Rev. 0					II
F. Field	81	ASBD-NDT-1101	Rev. 3	II	II			
R. Ferry	82	NDE-PQ-8002	Rev. 0					II
L. Stauffer	83	NDT-1006	Rev. 2	I-T	I-T			
A. Green	84	NDT-1006	Rev. 2	II	II			
R. Turpin	85	386HA480	Rev. 2	I				
W. Dobrizynski*	86	386HA480	Rev. 2	III				
R. Lindeman**	87	386HA480	Rev. 2	III				
P. Dhuse	88	NDE-PQ-8002	Rev. 0					II
M. Williams	89	NDE-PQ-8000	Rev. 5	I-T				
A. Clay	90	386HA480	Rev. 2	II				
G. Craigo	91	NDE-PQ-8000	Rev. 5	I-T	II			

*Performance and evaluation of jet pump beam inspection only.

**Evaluation of automatic inspection data only.

4.1 PERSONNEL CERTIFICATION (Unit II)

<u>NAME</u>	<u>TAB</u>	<u>CERTIFICATION PROGRAM</u>		<u>LEVEL QUALIFICATION</u>				
				<u>RT</u>	<u>UT</u>	<u>PT</u>	<u>MT</u>	<u>VT</u>
M. Gorrasi	92	AP QUA-277	Rev. 0		IT	II	II	
R. Newell	93	QCI.2.1	Rev. 0		II	II	II	II
J. Olin	94	NDE-PQ-8002	Rev. 3					II
C. Pinkelton	95	ASBD-NDT-1101	Rev. 4		II	II		
M. Sodermann	96	QCI.2.1	Rev. 0		II	II	II	II
J. Sterczynski	97	ASBD-NDT-1001	Rev. 4		I-T	I		
C. Stevens	98	NDE-PQ-8002	Rev. 3					III
K.K. Cherian	99	NDE-PQ-8000	Rev. 0		III	III	III	III

4.1 PERSONNEL CERTIFICATION (Unit II)

NAME	TAB	CERTIFICATION PROGRAM		LEVEL QUALIFICATION				
				RT	UT	PT	MT	VT
J. Amburgey	1	NDE-PQ-8000	Rev. 5			I-T		
R. Blackinton	2	MAC-77-026	Rev. 4		II	II		
L. Bowne	3	MAC-77-026	Rev. 4		II	II		
P. Cox	4	MAC-77-026	Rev. 4		II	II		
G. Craigo	5	NDE-PQ-8000	Rev. 5		I-T	II		
R.G. Conway	6	MAC-77-026	Rev. 4		II	II		
J.R. Decker	7	ASBD-NDT-1101	Rev. 2		II	II	II	
G.L. Fey	8	MAC-77-026	Rev. 4		I-T	II		
T.C. Hall	9	NDE-PQ-8000	Rev. 5			I-T		
M.P. Hart	10	ASBD-NDT-1101	Rev. 2	III	III	III	III	
H. Kloster	11	MAC-77-026	Rev. 4		II	II		
M.A. Metzger	12	NDE-PQ-8000	Rev. 5			I-T		
P.K. Olsen	13	MAC-77-026	Rev. 4		III	III	III	
S.R. Reeves	14	NDE-PQ-8000	Rev. 5			I-T		
R.S. Rather	15	NDE-PQ-8000	Rev. 5		I-T	I		
L.W. Wheatley	16	NDE-PQ-8000	Rev. 5	III	III	III	III	III
D. Tellier	17	MAC-77-026	Rev. 4			II		
T. Yurik	18	MAC-77-026	Rev. 4		I	II		
G.C. Zettel	19	NDE-PQ-8000	Rev. 5			I-T		
B. Dummer	20	ASBD-NDT-1101 QCI 2.1	Rev. 2 Rev. 0		II II	II II	II II	II
S. Connelly	21	NDE-PQ-8000	Rev. 5		I-T			
L. Bell	22	MAC-77-026	Rev. 4			II		

4.1 PERSONNEL CERTIFICATION (Unit II)

NAME	TAB	CERTIFICATION PROGRAM		LEVEL QUALIFICATION				
				RT	UT	PT	MT	VT
M. Heath	23	ASBD-NDT-1101	Rev. 2		II	II		
S. Mortenson	24	ASBD-NDT-1101	Rev. 2		II	II	II	
F. Johnston	25	ASBD-NDT-1101	Rev. 2		I-T	II	II	
D. Litzler	26	ASBD-NDT-1101	Rev. 2			II		
D. Tucker	27	ASBD-NDT-1101	Rev. 2			II		
A. Sarno	28	ASBD-NDT-1101	Rev. 2		I	II		
J. Wojcik	29	ASBD-NDT-1101	Rev. 2		I	II		
L. Richardson	30	ASBD-NDT-1101	Rev. 2		I-T	I		
B. Warchuck	31	ASBD-NDT-1101	Rev. 2		II	II		
N. Hansen	32	ASBD-NDT-1101	Rev. 2		II	II	II	
D. Percival	33	ASBD-NDT-1101	Rev. 2		I-T	II		
C. Mills	34	ASBD-NDT-1101	Rev. 2		II	II	II	
D. Holthaus	35	ASBD-NDT-1101	Rev. 2		III	III	III	
R. Schmidt	36	ASBD-NDT-1101	Rev. 2		I	II		
C.I. Bonzo	37	ASBD-NDT-1101	Rev. 2			II		
F. Bernardo	38	ASBD-NDT-1101	Rev. 2		I			
R. Bagues	39	ASBD-NDT-1101	Rev. 2		I-T	II		
G. Webb	40	ASBD-NDT-1101	Rev. 2		I-T			
T. Telder	41	NDT Services	Part VI		II	II		
L. Schmitgal	42	NDT Services	Part VI		II	II		
K. Cutright	43	NDT Services	Part VI		II	II		
L. Frederick	44	NDT Services	Part VI		II	II		
R.L. McClain	45	TEI-A-07	Rev. 1		I	II		

4.1 PERSONNEL CERTIFICATION (Unit II)

NAME	TAB	CERTIFICATION PROGRAM		LEVEL QUALIFICATION				
				RT	UT	PT	MT	VT
D.W. Frazier	46	TEI-A-07	Rev. 1		II	II		
J.M. Case	47	TEI-A-07	Rev. 1		II	II		
T.A. Holcombe	48	TEI-A-07	Rev. 1		II	II		
R. Palmer	49	TEI-A-07	Rev. 1		II	II		
L. McClain	50	TEI-A-07	Rev. 1		II	II		
S. Razi	51	ASBD-NDT-1101	Rev. 2	III	III	III	III	
R. Pietzak	52	NDT Services	Part VI		II	II		
S. Herman	53	TEI-A-07	Rev. 1		II	II		
L. Holcombe	54	TEI-A-07	Rev. 1		II	II		
R. Cram	55	TEI-A-07	Rev. 1		I			
J. Sheldon	56	TEI-A-07	Rev. 1		I-T	II		
D. Mecklenburg	57	TEI-A-07	Rev. 1		I	II		
R. Austin	58	NDT Services	Part VI		I-T	II		
S. Volk	59	NDT Services	Part VI		II	II	II	
R. May	60	386HA480	Rev. 2		I-T			
E. Gaylean	61	386HA480	Rev. 2		I-T			
P. Ramsey	62	386HA480	Rev. 2		II			
J. Albanese	63	386HA480	Rev. 2		II			
R. Hooper	64	NDE-PQ-8000	Rev. 5		II	I		
E. Lake	65	NDT Services	Part VI		I	I-T		
A. Homler	66	NDT Services	Part VI		II	II		
R. Clarke	67	NDT Services	Part VI		I-T	I-T		
T. Dykes	68	NDT Services	Part VI		I-T	I-T		

4.1 PERSONNEL CERTIFICATION (Unit II)

NAME	TAB	CERTIFICATION PROGRAM		LEVEL QUALIFICATION				
				RT	UT	PT	MT	VT
B. Shields	69	NDT Services	Part VI	I-T	I-T			
D. Voget	70	386HA480	Rev. 2	II				
T. Le	71	386HA480	Rev. 2	II				
W. Mason	72	386HA480	Rev. 2	I-T				
T. Daly	73	NDT-1006	Rev. 2	I-T	I-T			
C. Pendergrass	74	386HA480	Rev. 2	I-T				
J. Story	75	NDT Services	Part VI	II	II			
J. Craig	76	NDT-1006	Rev. 2	II	II			
J. Briggs	77	QC-3-380	Rev. 2	II	II			
J. Abrigo	78	NDT-1006	Rev. 2	II	II	II		
D. Bryant	79	NDE-PQ-8002	Rev. 0					II
M. Patch	80	NDE-PQ-8002	Rev. 0					II
F. Field	81	ASBD-NDT-1101	Rev. 3	II	II			
R. Ferry	82	NDE-PQ-8002	Rev. 0					II
L. Stauffer	83	NDT-1006	Rev. 2	I-T	I-T			
A. Green	84	NDT-1006	Rev. 2	II	II			
R. Turpin	85	386HA480	Rev. 2	I				
W. Dobrizynski*	86	386HA480	Rev. 2	III				
R. Lindeman**	87	386HA480	Rev. 2	III				
P. Dhuse	88	NDE-PQ-8002	Rev. 0					II
M. Williams	89	NDE-PQ-8000	Rev. 5	I-T				
A. Clay	90	386HA480	Rev. 2	II				
G. Craigo	91	NDE-PQ-8000	Rev. 5	I-T	II			

*Performance and evaluation of jet pump beam inspection only.

**Evaluation of automatic inspection data only.

4.1 PERSONNEL CERTIFICATION (Unit II)

<u>NAME</u>	<u>TAB</u>	<u>CERTIFICATION PROGRAM</u>		<u>LEVEL QUALIFICATION</u>				
				<u>RT</u>	<u>UT</u>	<u>PT</u>	<u>MT</u>	<u>VT</u>
M. Gorrasi	92	AP QUA-277	Rev. 0		IT	II	II	
R. Newell	93	QCI.2.1	Rev. 0		II	II	II	II
J. Olin	94	NDE-PQ-8002	Rev. 3					II
C. Pinkelton	95	ASBD-NDT-1101	Rev. 4		II	II		
M. Sodermann	96	QCI.2.1	Rev. 0		II	II	II	II
J. Sterczynski	97	ASBD-NDT-1001	Rev. 4		I-T	I		
C. Stevens	98	NDE-PQ-8002	Rev. 3					III
K.K. Cherian	99	NDE-PQ-8000	Rev. 0		III	III	III	III

Zs(8A-29)

4.1 PERSONNEL CERTIFICATION (Unit II)

NAME	TAB	CERTIFICATION PROGRAM		LEVEL QUALIFICATION				
				RT	UT	PT	MT	VT
B. Shields	69	NDT Services	Part VI		I-T	I-T		
D. Voget	70	386HA480	Rev. 2		II			
T. Le	71	386HA480	Rev. 2		II			
W. Mason	72	386HA480	Rev. 2		I-T			
T. Daly	73	NDT-1006	Rev. 2		I-T	I-T		
C. Pendergrass	74	386HA480	Rev. 2		I-T			
J. Story	75	NDT Services	Part VI		II	II		
J. Craig	76	NDT-1006	Rev. 2		II	II		
J. Briggs	77	QC-3-380	Rev. 2		II	II		
J. Abrigo	78	NDT-1006	Rev. 2		II	II	II	
D. Bryant	79	NDE-PQ-8002	Rev. 0					II
M. Patch	80	NDE-PQ-8002	Rev. 0					II
F. Field	81	ASBD-NDT-1101	Rev. 3		II	II		
R. Ferry	82	NDE-PQ-8002	Rev. 0					II
L. Stauffer	83	NDT-1006	Rev. 2		I-T	I-T		
A. Green	84	NDT-1006	Rev. 2		II	II		
R. Turpin	85	386HA480	Rev. 2		I			
W. Dobrizynski*	86	386HA480	Rev. 2		III			
R. Lindeman**	87	386HA480	Rev. 2		III			
P. Dhuse	88	NDE-PQ-8002	Rev. 0					II
M. Williams	89	NDE-PQ-8000	Rev. 5		I-T			
A. Clay	90	386HA480	Rev. 2		II			
G. Craigo	91	NDE-PQ-8000	Rev. 5		I-T	II		

*Performance and evaluation of jet pump beam inspection only.

**Evaluation of automatic inspection data only.

GENERAL  ELECTRIC

APPARATUS AND ENGINEERING SERVICES • CENTRAL NUCLEAR PLANT SERVICES
GENERAL ELECTRIC COMPANY • 8157 SOUTH CASS AVENUE • DARIEN, ILLINOIS 60559 • (312) 789-5900

May 9, 1984

To Whom It May Concern:

In Volume 3, Section 4.1 Personnel Certifications, Tab 91 was used in error for G. Craigo Certifications. G. Craigo certifications are located in Volume 1, Section 4.1, Tab 5.

Brad M. Dummer

Brad M. Dummer
Preservice Inspection Project
LaSalle County Station

Unit 2, Volume 3, Section 4.1



MAGNAFLUX CORPORATION

L. J. Wheeler
Quality Assurance Approval

0000

TELEX 25-4194

7300 WEST LAWRENCE AVENUE • CHICAGO, ILLINOIS 60656

Date: March 5, 1979

TO:

COMMONWEALTH EDISON CO
R R #1 BOX 220
2501 N 21ST RD
MADISELLES IL 61341

Purchase Order No. _____

CUST PO 233424
MX ORDER # 34617 1-5750

Attention:

SUBJECT: Spotcheck Cleaner, Type: SKC-S, Batch No. 79C014

We hereby certify that the above material:

1. Meets the requirements of MIL-I-25135C (Amendment III), and is approved by the U.S. Air Force.
2. Meets the requirements of and has been tested for sulfur and halogens according to:
 - (a) ASME Boiler and Pressure Vessel Code, Section V, Nondestructive Examination, Paragraph T-630, Winter 1974 and later addenda to the date of this certification.
 - (b) ASTM E 165-75 Paragraph 7.1.
 - (c) NAVSHIPS 250-1500-1 (Rev. 8 June 1971 and Rev. 9 August 1973) Paragraph 12.5.1.1.
 - (d) MIL-STD 271E, (31 October 1973) Paragraph 5.3.1 and NTR-1D (July 14, 1975) Paragraph 5.3.
 - (e) RDT Standard F3-6T, May 1974 and October 1975 including Amendments 1 (4-6-76) and 2 (2-9-78) Article 6, Paragraph T-630.

The following test results were obtained:

Residue (See Note 3) 0.0029 g./100mL, 0.0038 g./100g.

3. No mercury bearing equipment was used in its manufacture.

MAGNAFLUX CORPORATION

J. T. Schmidt

J. T. Schmidt - Chief Control Chemist

- NOTES:
1. Our batch number appears on the bottom of all spray containers and on the label of all other containers.
 2. Most specifications require test results stated in percent but some require parts per million (PPM). To convert "percent" figures to "parts per million" multiply percent figure by ten thousand (10,000).
 3. NAVSHIPS 250-1500-1, MIL-STD 271, RDT F3-6T and ASME Section V all require that materials be subject to ASTM D-1353 or a very similar procedure to evaporate off volatile solvents before analysis for sulfur and halogen. According to these specifications, only those residues higher than 0.005g./100ml. shall be analyzed for sulfur and halogen. Lower residues shall be reported.

Form No. 1566 R-10/78

NONDESTRUCTIVE TESTING SYSTEMS • METHODS • SERVICE

Received
by Colonel AVER 5-284

RECEIVING INSPECTION REPORT

RIR No. RIR-001
For Items List No. N/A
Line No. N/A

PART NO. 1

Project LASALLE UNIT 1 BASELINE Project No. LCS-PD173 Purchase Order No. N/A
Description PENETRANT MATERIALS Product Specification & Rev. OWNER FURNISHED

PART NO. 2 CHARACTERISTICS TO BE INSPECTED:

Prepared by L. W. WHEATLEY Date 8/7/78

- 1) QUANTITY 6) _____
- 2) CERTIFICATION 7) _____
- 3) MARKINGS 8) _____
- 4) _____ 9) _____
- 5) _____ 10) _____

PART NO. 3 RECEIVING INSPECTION

Markings SPOTCHECK DEVELOPER 78D056 SPOTCHECK PENETRANT 78E073 SPOTCHECK CLEANER 78C130
Heat & Lot Or Serial No. DEVELOPER 78D056 PENETRANT 78E073 CLEANER 78C130

Characteristics Inspected:		A - Accepted		R - Rejected	
1) <u>A</u>	3) <u>A</u>	5) _____	7) _____	9) _____	
2) <u>A</u>	4) _____	6) _____	8) _____	10) _____	

Remarks: (List Characteristic No. and reason for rejection)

Nonconformities:

Is Component or Appurtenance Code-Stamped Yes No Inspected By E. Smalley Date 8/7/78

PART NO. 4 RECEIVING VERIFICATION

	Yes	No	NA
Recorded markings meet the requirements of the Product Spec. _____	<input type="checkbox"/>	<input type="checkbox"/>	<input checked="" type="checkbox"/>
Heat & lot numbers match the Material Certification _____	<input checked="" type="checkbox"/>	<input type="checkbox"/>	<input type="checkbox"/>
Serial Numbers match the Data Reports (Code-stamped items only) _____	<input type="checkbox"/>	<input type="checkbox"/>	<input checked="" type="checkbox"/>
Recorded characteristics meet the requirements of the Product Spec. _____	<input type="checkbox"/>	<input type="checkbox"/>	<input checked="" type="checkbox"/>
Material Certifications and Test Reports meet the requirements of the Product Spec. _____	<input type="checkbox"/>	<input type="checkbox"/>	<input checked="" type="checkbox"/>
Material Certifications and Test Reports accepted by QA/QC Supervisor (owner purchased items only) _____	<input checked="" type="checkbox"/>	<input type="checkbox"/>	<input type="checkbox"/>
Date Reports acceptable (Code-stamped items only) _____	<input type="checkbox"/>	<input type="checkbox"/>	<input checked="" type="checkbox"/>

Verified by Lawrence W. Wheatley Date 8/7/78
Reviewed by ANI W. J. Caldwell Date 5-7-84

RECEIVING INSPECTION REPORT

RIR No. RIR-002
For Items List No. NA
Line No. NA

PART NO. 1

Project LASALLE UNIT 1 BASELINE Project No. LCS-PC173-1 Purchase Order No. 413N0232-2
Description GLYCERINE Product Specification & Rev. OWNER FURNISHED

PART NO. 2 CHARACTERISTICS TO BE INSPECTED:

Prepared by L.W. Wheatley Date 8/7/78
L.W. WHEATLEY

- | | |
|-------------------------|--------------|
| 1) <u>QUANTITY</u> | 6) <u>—</u> |
| 2) <u>CERTIFICATION</u> | 7) <u>—</u> |
| 3) <u>MARKINGS</u> | 8) <u>—</u> |
| 4) <u>—</u> | 9) <u>—</u> |
| 5) <u>—</u> | 10) <u>—</u> |

PART NO. 3 RECEIVING INSPECTION

Markings PO # 413N0232-2
Heat & Lot Or Serial No. N/A NOT APPLICABLE

Characteristics Inspected:		A - Accepted		R - Rejected	
1) <u>A</u>	3) <u>A</u>	5) <u>—</u>	7) <u>—</u>	9) <u>—</u>	
2) <u>A</u>	4) <u>—</u>	6) <u>—</u>	8) <u>—</u>	10) <u>—</u>	

Remarks: (List Characteristic No. and reason for rejection)
3) REPLACED LABEL WITH TAPE SCL

Nonconformities:

Is Component or Appurtenance Code-Stamped Yes No Inspected By S. D. Connelly Date 8/7/78
S. D. CONNELLY

PART NO. 4 RECEIVING VERIFICATION

	Yes	No	NA
Recorded markings meet the requirements of the Product Spec.	<input type="checkbox"/>	<input type="checkbox"/>	<input checked="" type="checkbox"/>
Heat & lot numbers match the Material Certification	<input checked="" type="checkbox"/>	<input type="checkbox"/>	<input type="checkbox"/>
Serial Numbers match the Data Reports (Code-stamped items only)	<input type="checkbox"/>	<input type="checkbox"/>	<input checked="" type="checkbox"/>
Recorded characteristics meet the requirements of the Product Spec.	<input type="checkbox"/>	<input type="checkbox"/>	<input checked="" type="checkbox"/>
Material Certifications and Test Reports meet the requirements of the Product Spec.	<input type="checkbox"/>	<input type="checkbox"/>	<input checked="" type="checkbox"/>
Material Certifications and Test Reports accepted by QA/QC Supervisor (owner purchased items only)	<input type="checkbox"/>	<input type="checkbox"/>	<input checked="" type="checkbox"/>
Data Reports acceptable (Code-stamped items only)	<input checked="" type="checkbox"/>	<input type="checkbox"/>	<input checked="" type="checkbox"/>

Verified by L.W. Wheatley Date 8/7/78
Reviewed by ANI W.J. Colwell Date 5-7-84

RECEIVING INSPECTION REPORT

RIR No. RIR-003
For Items List No. N/A
Line No. N/A

PART NO. 1

Project LASALLE BASELINE UNIT 1 Project No. LES-P0173-1 Purchase Order No. #391ND0173-4
Description GLYCERINE Product Specification & Rev. OWNER FURNISHED

PART NO. 2 CHARACTERISTICS TO BE INSPECTED:

Prepared by L.W. Wheatley Date 8/7/78
L.W. WHEATLEY

- | | |
|-------------------------|----------------|
| 1) <u>QUANTITY</u> | 6) <u>---</u> |
| 2) <u>CERTIFICATION</u> | 7) <u>---</u> |
| 3) <u>MARKINGS</u> | 8) <u>---</u> |
| 4) <u>---</u> | 9) <u>---</u> |
| 5) <u>---</u> | 10) <u>---</u> |

PART NO. 3 RECEIVING INSPECTION

Markings PC #391ND0173-4
Heat & Lot Cr Serial No. N/A NOT APPLICABLE

Characteristics Inspected:		A - Accepted		R - Rejected	
1) <u>A</u>	3) <u>A</u>	5) <u>---</u>	7) <u>---</u>	9) <u>---</u>	
2) <u>A</u>	4) <u>---</u>	6) <u>---</u>	8) <u>---</u>	10) <u>---</u>	

Remarks: (List Characteristic No. and reason for rejection)

Nonconformities:

Is Component or Appurtenance Code-Stamped Yes No Inspected By S. J. McInelly Date 8/7/78
S. J. McINELLY

PART NO. 4 RECEIVING VERIFICATION

	Yes	No	NA
Recorded markings meet the requirements of the Product Spec.	<input type="checkbox"/>	<input type="checkbox"/>	<input checked="" type="checkbox"/>
Heat & lot numbers match the Material Certification	<input checked="" type="checkbox"/>	<input type="checkbox"/>	<input type="checkbox"/>
Serial Numbers match the Data Reports (Code-stamped items only)	<input type="checkbox"/>	<input type="checkbox"/>	<input checked="" type="checkbox"/>
Recorded characteristics meet the requirements of the Product Spec.	<input type="checkbox"/>	<input type="checkbox"/>	<input type="checkbox"/>
Material Certifications and Test Reports meet the requirements of the Product Spec.	<input type="checkbox"/>	<input type="checkbox"/>	<input type="checkbox"/>
Material Certifications and Test Reports accepted by QA/QC Supervisor (owner purchased items only)	<input type="checkbox"/>	<input type="checkbox"/>	<input checked="" type="checkbox"/>
Date Reports acceptable (Code-stamped items only)	<input checked="" type="checkbox"/>	<input type="checkbox"/>	<input checked="" type="checkbox"/>

Verified by L.W. Wheatley Date 8/7/78
Reviewed by ANI W. J. Caldwell Date 5-7-84



RECEIVING INSPECTION REPORT

RIR No. RIR-CC4

FoI Items List No. N/A

Line No. N/A

PART NO. 1

BASELINE + PRESERVICE INSPECTION
 Project LASALLE COUNTY NUCLEAR STATION Project No. 390ND173 Purchase Order No. N/A
 Description SPOTCHECK CLEANER Product Specification & Rev. NA

PART NO. 2 CHARACTERISTICS TO BE INSPECTED:

Prepared by L W Wheatley Date 4/20/79

- | | |
|---|-----------|
| 1) <u>Certification</u> | 6) _____ |
| 2) <u>Markings</u> | 7) _____ |
| 3) <u>Analysis meets PP-S751 requirements</u> | 8) _____ |
| 4) _____ | 9) _____ |
| 5) _____ | 10) _____ |

PART NO. 3 RECEIVING INSPECTION

Markings Spotcheck Cleaner

Heat & Lot Or Serial No. Type SKC-S Butch No 79C014

Characteristics Inspected:		A - Accepted		R - Rejected	
1) <u>A</u>	3) <u>A</u>	5) _____	7) _____	9) _____	
2) <u>A</u>	4) _____	6) _____	8) _____	10) _____	

Remarks: (List Characteristic No. and reason for rejection)

Nonconformities:

Is Component or Appurtenance Code-Stamped Yes No Inspected By L W Wheatley Date 4/20/79

PART NO. 4 RECEIVING VERIFICATION

	Yes	No	NA
Recorded markings meet the requirements of the Product Spec. _____	<input type="checkbox"/>	<input type="checkbox"/>	<input checked="" type="checkbox"/>
Heat & lot numbers match the Material Certification _____	<input checked="" type="checkbox"/>	<input type="checkbox"/>	<input type="checkbox"/>
Serial Numbers match the Data Reports (Code-stamped items only) _____	<input type="checkbox"/>	<input type="checkbox"/>	<input checked="" type="checkbox"/>
Recorded characteristics meet the requirements of the Product Spec. _____	<input type="checkbox"/>	<input type="checkbox"/>	<input checked="" type="checkbox"/>
Material Certifications and Test Reports meet the requirements of the Product Spec. _____	<input type="checkbox"/>	<input type="checkbox"/>	<input checked="" type="checkbox"/>
Material Certifications and Test Reports accepted by QA/QC Supervisor (owner purchased items only) _____	<input checked="" type="checkbox"/>	<input type="checkbox"/>	<input type="checkbox"/>
Date Reports acceptable (Code-stamped items only) _____	<input type="checkbox"/>	<input type="checkbox"/>	<input checked="" type="checkbox"/>

Verified by L W Wheatley Date 4/20/79

Reviewed by AI wj Caldwell Date 5-2-84



RECEIVING INSPECTION REPORT

RIR No. RIR-005For Items List No. NALine No. N/A**PART NO. 1**BASELINE + PRESERVICEProject LASALLE COUNTY NUCLEAR STATION Project No. 39010173 Purchase Order No. N/ADescription GLYCERINE Product Specification & Rev. N/A**PART NO. 2 CHARACTERISTICS TO BE INSPECTED:**Prepared by LW Wheatley Date 4/20/79

- | | |
|-----------------------|-----------|
| 1) <u>Quantity</u> | 6) _____ |
| 2) <u>Certificate</u> | 7) _____ |
| 3) <u>Markings</u> | 8) _____ |
| 4) _____ | 9) _____ |
| 5) _____ | 10) _____ |

PART NO. 3 RECEIVING INSPECTIONMarkings P.O. 3910173-25

Heat & Lot Or Serial No. _____

Characteristics Inspected:		A - Accepted	R - Rejected
1) <u>A 20 gal</u>	3) <u>A</u>	5) _____	7) _____ 9) _____
2) <u>A</u>	4) _____	6) _____	8) _____ 10) _____

Remarks: (List Characteristic No. and reason for rejection)

Nonconformities:

Is Component or Appurtenance Code-Stamped Yes No Inspected By LW Wheatley Date 4/20/79

PART NO. 4 RECEIVING VERIFICATION	Yes	No	NA
Recorded markings meet the requirements of the Product Spec. _____	<input type="checkbox"/>	<input type="checkbox"/>	<input checked="" type="checkbox"/>
Heat & lot numbers match the Material Certification _____	<input checked="" type="checkbox"/>	<input type="checkbox"/>	<input type="checkbox"/>
Serial Numbers match the Data Reports (Code-stamped items only) _____	<input type="checkbox"/>	<input type="checkbox"/>	<input checked="" type="checkbox"/>
Recorded characteristics meet the requirements of the Product Spec. _____	<input type="checkbox"/>	<input type="checkbox"/>	<input checked="" type="checkbox"/>
Material Certifications and Test Reports meet the requirements of the Product Spec. _____	<input type="checkbox"/>	<input type="checkbox"/>	<input checked="" type="checkbox"/>
Material Certifications and Test Reports accepted by QA/QC Supervisor (owner purchased items only) _____	<input checked="" type="checkbox"/>	<input type="checkbox"/>	<input checked="" type="checkbox"/>
Date Reports acceptable (Code-stamped items only) _____	<input type="checkbox"/>	<input type="checkbox"/>	<input checked="" type="checkbox"/>

Verified by LW Wheatley Date 4/20/79Reviewed by AI WJ Caldwell Date 5-7-84



RECEIVING INSPECTION REPORT

RIR No. RIR-006A
 For Items List No. NA
 Line No. NA

PART NO. 1

Project LaSalle I Baseline Inspection Project No. LCS-P0173-1 Purchase Order No. NA
 Description Penetrant Developer Product Specification & Rev. NA

PART NO. 2 CHARACTERISTICS TO BE INSPECTED:

Prepared by R. J. Wheatley Date 2/19/80

- | | |
|---|-----------|
| 1) <u>Certification</u> | 6) _____ |
| 2) <u>Markings</u> | 7) _____ |
| 3) <u>Analysis per PP-5751 requirements</u> | 8) _____ |
| 4) _____ | 9) _____ |
| 5) _____ | 10) _____ |

PART NO. 3 RECEIVING INSPECTION

Markings Spotcheck Developer
 Heat & Lot Or Serial No. Type SKD Batch 79E033

Characteristics Inspected:		A - Accepted		R - Rejected	
1) <u>A</u>	3) <u>A</u>	5) _____	7) _____	9) _____	
2) <u>A</u>	4) _____	6) _____	8) _____	10) _____	

Remarks: (List Characteristic No. and reason for rejection)

Nonconformities:

Is Component or Appurtenance Code-Stamped Yes No Inspected By R. J. Wheatley Date 2/19/80

PART NO. 4 RECEIVING VERIFICATION

	Yes	No	NA
Recorded markings meet the requirements of the Product Spec. _____	<input type="checkbox"/>	<input type="checkbox"/>	<input checked="" type="checkbox"/>
Heat & lot numbers match the Material Certification _____	<input checked="" type="checkbox"/>	<input type="checkbox"/>	<input type="checkbox"/>
Serial Numbers match the Data Reports (Code-stamped items only) _____	<input type="checkbox"/>	<input type="checkbox"/>	<input checked="" type="checkbox"/>
Recorded characteristics meet the requirements of the Product Spec. _____	<input type="checkbox"/>	<input type="checkbox"/>	<input checked="" type="checkbox"/>
Material Certifications and Test Reports meet the requirements of the Product Spec. _____	<input type="checkbox"/>	<input type="checkbox"/>	<input checked="" type="checkbox"/>
Material Certifications and Test Reports accepted by QA/QC Supervisor (owner purchased items only) _____	<input checked="" type="checkbox"/>	<input type="checkbox"/>	<input type="checkbox"/>
Date Reports acceptable (Code-stamped items only) _____	<input type="checkbox"/>	<input type="checkbox"/>	<input checked="" type="checkbox"/>

Verified by R. J. Wheatley Date 2/19/80

Reviewed by AI w. j. Caldwell Date 5-7-84



RECEIVING INSPECTION REPORT

RIR No. RIR-006A

For Items List No. NA

Line No. NA

ART NO. 1

Project LaSalle 2 PSI Project No. LCS-PO173-2 Purchase Order No. 391N0234-1

Description Glycerine Product Specification & Rev. NA

PART NO. 2 CHARACTERISTICS TO BE INSPECTED:

Prepared by L. W. Wheatley Date 7/16/79

- | | |
|-------------------------|-----------|
| 1) <u>Quantity</u> | 6) _____ |
| 2) <u>Certification</u> | 7) _____ |
| 3) <u>Markings</u> | 8) _____ |
| 4) _____ | 9) _____ |
| 5) _____ | 10) _____ |

PART NO. 3 RECEIVING INSPECTION

Markings _____

Heat & Lot Or Serial No. NA

Characteristics Inspected: A - Accepted R - Rejected

- | | | | | |
|---------------------------|-------------|----------|----------|-----------|
| 1) <u>55 gal</u> <u>A</u> | 3) <u>A</u> | 5) _____ | 7) _____ | 9) _____ |
| 2) <u>A</u> | 4) _____ | 6) _____ | 8) _____ | 10) _____ |

Remarks: (List Characteristic No. and reason for rejection)

Nonconformities:

Is Component or Appurtenance Code-Stamped Yes No Inspected By L. W. Wheatley Date 7/16/79

PART NO. 4 RECEIVING VERIFICATION

	Yes	No	NA
Recorded markings meet the requirements of the Product Spec. _____	<input type="checkbox"/>	<input type="checkbox"/>	<input checked="" type="checkbox"/>
Heat & lot numbers match the Material Certification _____	<input checked="" type="checkbox"/>	<input type="checkbox"/>	<input type="checkbox"/>
Serial Numbers match the Data Reports (Code-stamped items only) _____	<input type="checkbox"/>	<input type="checkbox"/>	<input checked="" type="checkbox"/>
Recorded characteristics meet the requirements of the Product Spec. _____	<input type="checkbox"/>	<input type="checkbox"/>	<input checked="" type="checkbox"/>
Material Certifications and Test Reports meet the requirements of the Product Spec. _____	<input type="checkbox"/>	<input type="checkbox"/>	<input checked="" type="checkbox"/>
Material Certifications and Test Reports accepted by QA/QC Supervisor (owner purchased items only) _____	<input type="checkbox"/>	<input type="checkbox"/>	<input checked="" type="checkbox"/>
Date Reports acceptable (Code-stamped items only) _____	<input type="checkbox"/>	<input type="checkbox"/>	<input checked="" type="checkbox"/>

Verified by L. W. Wheatley Date 7/16/79

Reviewed by AI w. j. Caldwell Date 5-7-84



RECEIVING INSPECTION REPORT

RIR No. RIR-007

FoI Items List No. NA

Line No. NA

PART NO. 1

Project La Salle #2 PSI Project No. LCS-PO173-2 Purchase Order No. 391N0172-8 322

Description Glycerine Product Specification & Rev. NA

PART NO. 2 CHARACTERISTICS TO BE INSPECTED:

Prepared by L Wheatley Date 4/10/80

- | | |
|---|-----------|
| 1) <u>Quantity</u> | 6) _____ |
| 2) <u>Certification</u> | 7) _____ |
| 3) <u>Markings</u> | 8) _____ |
| 4) <u>Chemical Analysis (PO 391N0172-5) LUV 8/17/81</u> | 9) _____ |
| 5) _____ | 10) _____ |

PART NO. 3 RECEIVING INSPECTION

Markings Dow Glycerine USP 99.5%

Heat & Lot Or Serial No. DH03070 H041

Characteristics Inspected:		A - Accepted		R - Rejected	
1) <u>55 gal</u>	3) <u>A</u>	5) _____	7) _____	9) _____	
2) <u>A</u>	4) <u>A</u>	6) _____	8) _____	10) _____	

Remarks: (List Characteristic No. and reason for rejection)

Nonconformities:

Is Component or Appurtenance Code-Stamped Yes No Inspected By LQ Wheatley Date 4/10/80

PART NO. 4 RECEIVING VERIFICATION

	Yes	No	NA
Recorded markings meet the requirements of the Product Spec. _____	<input type="checkbox"/>	<input type="checkbox"/>	<input checked="" type="checkbox"/>
Heat & lot numbers match the Material Certification _____	<input checked="" type="checkbox"/>	<input type="checkbox"/>	<input type="checkbox"/>
Serial Numbers match the Data Reports (Code-stamped items only) _____	<input type="checkbox"/>	<input type="checkbox"/>	<input checked="" type="checkbox"/>
Recorded characteristics meet the requirements of the Product Spec. _____	<input type="checkbox"/>	<input type="checkbox"/>	<input checked="" type="checkbox"/>
Material Certifications and Test Reports meet the requirements of the Product Spec. _____	<input type="checkbox"/>	<input type="checkbox"/>	<input checked="" type="checkbox"/>
Material Certifications and Test Reports accepted by QA/QC Supervisor (owner purchased items only) _____	<input type="checkbox"/>	<input type="checkbox"/>	<input checked="" type="checkbox"/>
Date Reports acceptable (Code-stamped items only) _____	<input type="checkbox"/>	<input type="checkbox"/>	<input checked="" type="checkbox"/>

Verified by LQ Wheatley Date 4/10/80

Reviewed by AI wj Caldwell Date 1-26-84



RECEIVING INSPECTION REPORT

RIR No. RIR-008FOI Items List No. NALine No. NA**PART NO. 1**Project LaSalle PSI Project No. LCS-P0173-1 Purchase Order No. NADescription Liquid Penetrant (Bulk) Product Specification & Rev. NA**PART NO. 2 CHARACTERISTICS TO BE INSPECTED:**Prepared by L Q Wheatley Date 6/13/80

- | | |
|---|-----------|
| 1) <u>Certification</u> | 6) _____ |
| 2) <u>Markings</u> | 7) _____ |
| 3) <u>Analysis per PP 5751 Requirements</u> | 8) _____ |
| 4) _____ | 9) _____ |
| 5) _____ | 10) _____ |

PART NO. 3 RECEIVING INSPECTIONMarkings Spotcheck Penetrant Type SKL-HF/SHeat & Lot Or Serial No. Batch No 79B109

Characteristics Inspected:		A - Accepted		R - Rejected	
1) <u>A</u>	3) <u>A</u>	5) _____	7) _____	9) _____	
2) <u>A</u>	4) _____	6) _____	8) _____	10) _____	

Remarks: (List Characteristic No. and reason for rejection)

Nonconformities:

Is Component or Appurtenance Code-Stamped Yes No Inspected By L Q Wheatley Date 6/13/80**PART NO. 4 RECEIVING VERIFICATION**

	Yes	No	NA
Recorded markings meet the requirements of the Product Spec. _____	<input type="checkbox"/>	<input type="checkbox"/>	<input checked="" type="checkbox"/>
Heat & lot numbers match the Material Certification _____	<input checked="" type="checkbox"/>	<input type="checkbox"/>	<input type="checkbox"/>
Serial Numbers match the Data Reports (Code-stamped items only) _____	<input type="checkbox"/>	<input type="checkbox"/>	<input checked="" type="checkbox"/>
Recorded characteristics meet the requirements of the Product Spec. _____	<input type="checkbox"/>	<input type="checkbox"/>	<input checked="" type="checkbox"/>
Material Certifications and Test Reports meet the requirements of the Product Spec. _____	<input type="checkbox"/>	<input type="checkbox"/>	<input checked="" type="checkbox"/>
Material Certifications and Test Reports accepted by QA/QC Supervisor (owner purchased items only) _____	<input checked="" type="checkbox"/>	<input type="checkbox"/>	<input type="checkbox"/>
Date Reports acceptable (Code-stamped items only) _____	<input type="checkbox"/>	<input type="checkbox"/>	<input checked="" type="checkbox"/>

Verified by L Q Wheatley Date 6/13/80Reviewed by AI W J Caldwell Date 5-7-84

8.0 PRESERVICE INSPECTION RECORDS

- 8.1 System Abbreviations
- 8.2 Format Legend and Notes
- 8.3 Vessels
- 8.4 Pumps
- 8.5 Piping Components

10.0 INSPECTION CHECKLISTS

10.1 Format Legend and Notes

10.2 Vessels

10.3 Pumps

10.4 Piping Components

10.5 Bolting Detail Drawings

10.6 Hangers and Supports

GENERAL  ELECTRIC

APPARATUS AND ENGINEERING SERVICES • CENTRAL NUCLEAR PLANT SERVICES
GENERAL ELECTRIC COMPANY • 8157 SOUTH CASS AVENUE • DARIEN, ILLINOIS 60559 • (312) 789-5900

May 11, 1984

SUBJECT: Ultrasonic Examination of Jet Pump Beam Bolts

To Whom It May Concern:

Due to a modified design condition of "Jet Pump Beam Bolts" the engineering Department of the General Electric Company, Nuclear Division, San Jose, California have determined that no ultrasonic examination is required on the bolts after assembly. This topic is covered in their internal publication titled "Service Information letter #330, Supplement #1" dated February 1981. Accordingly the original Jet Pump Beam Bolts have been replaced with the modified beam bolts per GE FDI #85/57435 Rev. 1 and MPL #B13-D006.7. A copy of the referenced FDI/MPL is included in this package for information.

Additional information can be obtained by contacting Mr. N. Casey, Service Manager, General Electric Company, Darien, Illinois.

Brad Dummer

Brad Dummer
Preservice Inspection Project
LaSalle County Station



DATE OF ISSUE
 11-23-82
 ISSUED BY PD & RC
 DATE 12-6-82
 em

FDDR NO. HA2-308
 REVISION 0
 SHEET 1 OF 2

FIELD DEVIATION
 DISPOSITION REQUEST

PROJECT LA SALLE UNIT 2
 EQUIPMENT (IMPL OR DESCRIPTION OR BOTH) B13-D006/B13-D007
 JET PUMP BEAM REPLACEMENT

FDDR ORIGINATOR DATE
 J.A. Hansen 11/4/82

DOCUMENT NO. SH NO. REV. TITLE
 FDI 85/57435 JET PUMP BEAM BOLTS

DEVIATION DESCRIPTION UNIT 1 FDDR-HA1-444

THERE IS AMPLE ROOM IN THE DOWNCOMER TO PERMIT ACCESS TO THE RETAINER BOLT.

SITE QC CONCURRENCE *William E. Fisher* DATE 11-10-82 FIELD CONCURRENCE *R.E. Spencer* DATE 11/11/82

SUGGESTED DISPOSITION EXPEDITED DISPOSITION

ELIMINATE THE REQUIREMENT TO REMOVE THE INLET MIXER SECTION PARA. 5.11 AND THE FIRST TWO SENTENCES OF PARA. 5.15.

DISPOSITION NEED DATE EXPEDITED DISPOSITION APPROVAL BY T. FALLAS 11/9/82 DATE

FINAL DISPOSITION
**PER ATTACHED TELECOPY*

ECA/ECN *NR* FDI NO. *NR*

JUSTIFICATION OF DISPOSITION DECISION (SAFETY, RELIABILITY)
**PER ATTACHED TELECOPY*

DESIGN VERIFICATION STATEMENT
**PER ATTACHED TELECOPY*

APPROVALS DATE <i>* THE CONTENT OF THIS FDDR IS IDENTICAL TO THE ATTACHED TELECOPY FOR APPROVAL</i> MATL APPL ENGR <i>J. E. Fallas 11/22/82</i> LEAD SYSTEM ENGR <i>W. E. Fisher 12/3/82</i> ENGR MANAGER RESPONSIBLE ENGR PROJECT MANAGER	DRF NO. IF APPLICABLE <i>NR</i>	THIS EQUIPMENT IS SAFETY RELATED SAFETY FUNCTION IS AFFECTED <input checked="" type="checkbox"/> YES <input type="checkbox"/> NO <input checked="" type="checkbox"/> YES <input checked="" type="checkbox"/> NO
	APPROVALS DATE _____	COMPLETION RECORD REQUIRED BY R. E. <input type="checkbox"/> YES <input checked="" type="checkbox"/> NO
DISTRIBUTION CODE INTERNAL <i>750 TTF</i> <i>195</i>	EXTERNAL _____	FIELD WORK ORDER NO. <i>315</i> DISPOSITION COMPLETE DATE <i>William E. Fisher 1-19-83</i> <i>J.A. Hansen 1/14/83</i>

DEVIATION
REQUEST

PROJECT LA SALLE UNIT 2
EQUIPMENT (IMPL OR DESCRIPTION OR BOTH) B13-D006/B13-D007
JET PUMP BEAM REPLACEMENT

FDDR ORIGINATOR J.A. Hansen DATE 11/4/82
J.A. Hansen

DOCUMENT NO. FDI 85/57435 SH NO. REV. TITLE JET PUMP BEAM BOLTS

DEVIATION DESCRIPTION UNIT 1 FDDR-HA1-444

THERE IS AMPLE ROOM IN THE DOWNCOMER TO PERMIT ACCESS TO THE RETAINER BOLT.

DATE OF DEVIATION DATE FIELD CONCURRENCE

STANDARD DISPOSITION EXPEDITED DISPOSITION

ELIMINATE THE REQUIREMENT TO REMOVE THE INLET MIXER SECTION PARA. 5.11 AND THE FIRST TWO SECTIONS OF PARA. 5.15.

DISPATCHED DATE

PER SUGGESTED DISPOSITION

538 11/8/82
ECONOM N.R.

FDI # W.R

JUSTIFICATION OF DISPOSIT

NO EFFECT ON SAFETY OR RELIABILITY SINCE ALL DESIGN CRITERIA ARE MET.

DESIGN VERIFICATION STATUS

THIS FDDR HAS NO EFFECT ON THE DESIGN REQUIREMENTS OF THE JET PUMP.

VERIFIED BY Mal O. Long DATE 11/8/82

APPROVALS DATE
P.H. Souge... 11/8/82
QUALITY
NOT REQUIRED
MATERIAL ENGINEER
NOT REQUIRED
LEAD ENGINEER
for CW DILLMAN 11-8-82
ENGINEER MANAGER
J.S. Salter 11/8/82
RESPONSIBLE ENGR
PROJECT MANAGER

DRF NO. IF APPLICABLE N.R.
APPROVALS DATE
R.E. Williams 11/8/82
M.J.A. 11/8/82
DISTRIBUTION CODE
INTERNAL 750TTR
EXTERNAL 195

THIS EQUIPMENT IS SAFETY RELATED YES NO
SAFETY FUNCTION IS AFFECTED YES NO
COMPLETION RECORD REQUIRED BY P.E. YES NO
SUPPLIER ACTION REQUIRED YES NO
FIELD WORK ORDER NO. 114-58
DISPOSITION COMPLETE DATE 11/14/82
DATE QUALITY CONTROL 11/14/82
FIELD MANAGER

10-4-82

FDI NO. 85/57435
 REVISION 1
 SHEET 1 OF 4

FIELD DISPOSITION INSTRUCTION

PROJECT La Salle UNIT 2
 EQUIPMENT Jet Pump Beam Bolts
 MPL NO. B13-D006,7

DATE OF ISSUE
 ISSUED BY PD & HC
 DATE 10-7-82
 ECN/IR/DDR/FDDR
N.A.

DESCRIPTION OF TASK

1.0 SCOPE

- 1.1 This revision replaces 85/57435 Rev. 0 in its entirety.
- 1.2 This document provides instructions to replace the existing jet pump beam bolts with new jet pump beam bolts in accordance with PWA 3365HA.
- 1.3 The new beam bolt load requirement is specified on the reactor drawing (paragraph 2.1). Welding, cleaning and inspection requirements are specified in required documents paragraph 2.2 and 2.3.

2.0 REQUIRED DOCUMENTS (Documents at site)

- 2.1 Reactor drawing 19/R631, Rev. 12
- 2.2 Reactor Assembly, Welding Cleaning, Examination and Storage specification 22A4202, Rev. 6
- 2.3 Tack welds for Jet Pump Keeper and Lock Assembly specification 21A8578, Rev. 3
- 2.4 Jet Pump Tensioner for Initial Installation (Dry Reactor Vessel) GEK 45856
- 2.5 Jet Pump Weld Qualification Test Fixture drawing 117C4333, Rev. 2
- 2.6 General Instructions for Reactor Assembly 22A4275, Rev. 1
- 2.7 Reactor and Assembly Installation specification 22A2693, Rev. 4
- 2.8 As-Built Record Requirements for Reactor Assembly 22A3829, Rev. 3
- 2.9 Jet Pump outline drawing 762E189, Rev. 3

<p>APPROVALS</p> <p>T.T. Fallas <u>9/24/82</u></p> <p>R.K. Longarbeam <u>9/29/82</u></p> <p>R. Soim <u>9/27/82</u></p> <p>C.W. Dillmann <u>9/28/82</u></p> <p>T.T. Fallas <u>10/1/82</u></p> <p>HRP <u>10-6-82</u></p>	<p>APPROVALS</p> <p>Mal O. Long <u>9/30/82</u></p> <p>R. Williams <u>10/1/82</u></p>	<p>THIS EQUIPMENT IS SAFETY RELATED <input checked="" type="checkbox"/> YES <input type="checkbox"/> NO</p> <p>SAFETY FUNCTION IS AFFECTED <input checked="" type="checkbox"/> YES <input type="checkbox"/> NO</p> <p>FIELD WORK ORDER NO. _____</p> <p>COMPLETION RECORD REQUIRED BY R. E. YES <input checked="" type="checkbox"/> NO <input type="checkbox"/></p> <p>FFP</p> <p>FDI TASK COMPLETED <u>10/1/83</u> DATE <u>2/1/83</u></p> <p>SITE QUALITY <u>10/1/83</u></p> <p>FIELD MANAGER <u>[Signature]</u></p>
<p>DISTRIBUTION CODE</p> <p>INTERNAL <u>7116</u></p> <p><u>7436</u></p> <p><u>7417B</u></p>		

FIELD DISPOSITION INSTRUCTION

DESCRIPTION OF TASK

2.10 Inlet Mixer

105D4755G2, Rev. 4
+ PL Rev. 6

2.11 Reactor Installation & Assembly Requirement

166B9289, Rev. 1

3.0 TOOLS AND MATERIAL REQUIRED

3.1 Jet Pump Tensioner or GE approved equivalent (Paragraph 2.4).

3.2 Jet Pump Weld qualification test fixture (Paragraph 2.5).

3.3 90 psi filtered air supply

3.4 Site shall provide necessary welding, cleaning, grinding and inspection material and devices.

3.5 Hoist capable of moving the jet pump tensioner from pump to pump. The tensioner weighs approximately 156 pounds.

3.6 Beam - Bolts - GE 137C5238 supplied under EI 120-2746L.

4.0 PREREQUISITES AND REQUIREMENTS

4.1 Documentation and approvals required shall be in place before work is started in the vessel.

4.2 Water level in the annulus between the shroud and RPV wall shall be at or below the top of the jet pump diffuser.

5.0 BEAM BOLT REMOVAL AND REPLACEMENT

Jet pump beam bolts were originally tensioned in accordance with instructions contained in the General Instructions for Reactor Assembly (Paragraph 2.6). Detensioning essentially reverses the procedure. Refer to the Jet Pump Beam Bolt drawing (Para.2.9 & 3.6) for familiarization with the parts involved.

5.1 Grind tack welds on Jet Pump holddown bolt keeper.

5.2 Mount the tensioner unit on the crane with the control station in a convenient position. Place the hydraulic system selector lever in "RETRACT" then pressurize the system to 100 psi using the hand pump. (Check safety precautions per 2.4.)

5.3 Actuate the air valve to verify proper hook actuation, leave the hooks in the open position.

FIELD DISPOSITION INSTRUCTION

DESCRIPTION OF TASK

- 5.4 Lower tensioner unit onto the top of the jet pump and position for pump tensioning. Verify correct placement.
- 5.5 Actuate air system to extend (close) tensioner hooks. Verify engagement.
- 5.6 Set hydraulic system lever to "EXTEND" position and pressurize the system to 3050 ± 50 psi.
- 5.7 Using jet pump socket tool rotate bolt counterclockwise one turn.
- 5.8 Reduce the pressure on tensioner to 0 and check bolt to be sure there is no load on it.
- 5.9 Remove the jet pump tensioner.
- 5.10 Rotate the beam approximately 90° and raise the wedges, securing the wedges in the raised position.
- 5.11 Mark the inlet mixer with its location in the vessel. Remove the inlet mixer from the vessel.
- 5.12 Remove the fillet weld at the hex head bolt (Item 11 of Reference 2.10). Minimize grinding into base material as these parts will be reused.
- 5.13 All ground areas shall be VT inspected under 5X magnification and adequate illumination. Acceptance criteria shall be no evidence of any cracks or discontinuities.
- 5.14 Assemble replacement beam bolt to inlet mixer per 2.10. Note: Reuse parts 8, 9 & 11 of Reference 2.10.
- 5.15 Reassemble inlet mixer onto the jet pump riser at their marked location per reference 2.1 & 2.11. Inlet mixer must contact with the adjusting screws and wedges in the original lowered position. Position the holddown beam in the riser transition piece post sockets, then torque the bolt to 50 ft-lbs. This establishes the "zero" reference position. Using a low stress center punch, mark the keeper weld flange and adjacent to it is another mark on the lock plate for this "zero" reference position.
- 5.16 Tension the jet pump beam by repeating step 5.2 to 5.6 except pressurize the system to 2542 ± 25 psi. Engage the beam bolt socket and rotate the beam bolt clockwise from reference "zero" position. Torque the bolt to 50 ft-lbs.
- 5.17 Lower the pressure to about 1000 psi and repressurize the tensioner to 2542 ± 25 psi. Retorque to 50 ft-lbs while observing the beam bolt keeper for movement.
- 5.18 Repeat step 5.17 until no movement of keeper is evident. Remove jet pump tensioner pressure. Perform a 500 ft-lb torque test per reference 2.6*. From the reference "zero" position, a rotation of $58^{\circ} \pm 20^{\circ}$ is required for the bolt. Apply a low stress center punch mark on lock plate adjacent to the mark on the keeper flange. Tack weld jet pump keepers per document 2.1, 2.2, 2.3, 2.5 and 2.6. Note: 500 ft-lb torque test in lieu of 300 ft-lbs called out in Ref. 2.6.

DESCRIPTION OF TASK

- 5.19 Record beam bolt rotation data as required by reference 2.8. Mark each sheet of data "new beam bolt tensioning" so that it won't be confused with original data.

6.0 SUBMITTAL REQUIREMENTS

The following procedures shall be submitted to GE for approval.

- 6.1 Welding procedure.
6.2 Mockup procedure.
6.3 Visual examination procedure.
6.4 Cleanliness control procedure.

7.0 QUALITY CONTROL REQUIREMENTS

The scope of this FDI shall be performed to a documented and approved QA program conforming to the applicable requirements of ANSI - 45.2 "Quality Assurance Program Requirements for Nuclear Facilities" (latest published edition applicable). A Quality Control Summary Plan shall be issued by parties responsible for and prior to the start of work. The plan shall outline the Quality Control requirements as well as delineate the detail Quality Control elements required including but not limited to QA Organization, QC Responsibilities, QC Surveillance, Audits, Nonconformance Control, Submittals, Records and Records Retention to verify and document compliance with this FDI scope of work.

NOTE: It is recommended that the customer mark and/or deface the old beam assembly so as to preclude installation at some future date.

- 7.1 The applicable provisions of 10CFR Part 21, reporting of defects and non-compliance apply to this FDI. If installer reports any defect to the N.R.C. under Part 21, the Installer shall concurrently furnish GE with a copy of the submittal and any applicable details.

INSPECTION CHECKLIST
 LASALLE COUNTY STATION UNIT 2

IC NO. GEL-1061 REV. 3

PAGE 1 of 3

REVIEWED AND APPROVED BY:

Q.C. SUPERVISOR L.D.D. Heatley DATE 10/16/81

SIZE	EXAM COMP ID NO	DWG. REV. NO. 02	ASME CAT 03	COMP FIG 04	PROCEDURE NO. 05	REV. NO. 06	EXAM TYPE 07	EDS NO. 08	CDS NO. 09	LSCS CAL STD. NO. 10	LDS NO. 11	Q.C. REVIEW SIGNATURE/DATE 12	AI INIT/DATE 13
NA	GEL-1061-AA	0	B-B	BH-SH	7	2	UT-0°	4023	4022	01-92-06	4021	L.D.D. Heatley 10/16/81	w J Calder 11-16-81
					7	2	UT-45°	18011 18012	18010 18010	01-92-06	18009 18009		
					7	2	UT-60°	3247	3246	01-92-06	3245		
NA	GEL-1061-AJ	0	B-B	SH-SH	7	2	UT-0°	3267 3270 4026	3266 3269 4025	01-92-06	3265 3268 4021	L.D.D. Heatley 10/16/81	w J C 11-16-81
					7	2	UT-45°	3250 4041	3249 4040	01-92-06	3248 4039		
					7	2	UT-60°	18015 18040	18014 18039	01-92-06	18013 18038		
NA	GEL-1061-AJ	0	B-B	SH-SH	7	2	UT-0°	3273 ⁵²⁻³⁴ 4027	3272 4028	01-92-07	3271 4021	L.D.D. Heatley 10/16/81	w J C 11-16-81
					7	2	UT-45°	4044 3253	4043 3252	01-92-07	4042 3251		
					7	2	UT-60°	3276 3256	3275 3255	01-92-07	3274 3254		
NA	FEL-1061-DA	0	B-B	LS	7	2	UT-0°	3267 4023	3266 4022	01-92-06	3265 4021	L.D.D. Heatley 10/16/81	w J C 11-16-81
					7	2	UT-45°	18011 4041	18010 4040	01-92-06	18009 4039		
					7	2	UT-60°	3247 18040	3246 18039	01-92-06	3245 18038		
NA	GEL-1061-DB	0	B-B	LS	7	2	UT-0°	4023 4026	4022 4025	01-92-06	4021 4024	L.D.D. Heatley 10/16/81	w J C 11-16-81
					7	2	UT-45°	3250 18011	3249 18010	01-92-06	3248 18009		
					7	2	UT-60°	18015 3247	18014 3246	01-92-06	18013 3245		

REVIEWED AND APPROVED BY:

Q.C. SUPERVISOR [Signature] DATE 4-22-84

SIZE	EXAM COMP ID NO	DWG. REV. NO.	ASME CAT	COMP FIG	PROCEDURE No.	REV. NO.	EXAM TYPE	EDS NO.	CDS NO.	LSCS CAL STD. NO.	LDS NO.	Q.C. REVIEW SIGNATURE/DATE	AI INIT/DATE
00	01	02	03	04	05	06	07	08	09	10	11	12	13
1-1/4" (64)	IRH-HX2AV-8	2	C-D	FB	4	2	VT	N/A	N/A	N/A	N/A	See RI-02 [Signature]	wj 5-7-84

REVIEWED AND APPROVED BY:

Q.C. SUPERVISOR Charles... DATE 4-24-84

SIZE	EXAM COMP ID NO	DWG. REV. NO.	ASME CAT	COMP FIG	PROCEDURE No.	REV. NO.	EXAM TYPE	EDS NO.	CDS NO.	LSCS CAL STD. NO.	LDS NO.	Q.C. REVIEW SIGNATURE/DATE	AI INIT/DATE
00	01	02	03	04	05	06	07	08	09	10	11	12	13
1-1/4" (64)	IRH-HX2BV-8	2	C-D	FB	4	2	VT	N/A	N/A	N/A	N/A	See RI-02 4-24-84 W J Collins	5-7-84

REVIEWED AND APPROVED BY:

Q.C. SUPERVISOR [Signature] DATE 4-23-04

SIZE	EXAM COMP ID NO	DWG. REV. NO.	ASME CAT	COMP FIG	PROCEDURE No.	REV. NO.	EXAM TYPE	EDS NO.	CDS NO.	LSCS CAL STD. NO.	LDS NO.	Q.C. REVIEW SIGNATURE/DATE	INIT/DATE
00	01	02	03	04	05	06	07	08	09	10	11	12	13
1- 7/8" (10)	IHP-PU2V-3A	1	C-D	FB	4	2	VT	N/A	N/A	N/A	N/A	See RI-02 <i>[Signature]</i> 5-7-04	<i>[Signature]</i> 5-7-04
1- 1/8" (20)	IHP-PU2V-1A	1	C-D	FB	4	2	VT	N/A	N/A	N/A	N/A	See RI-02 <i>[Signature]</i> 5-7-04	<i>[Signature]</i> 5-7-04
1- 1/8" (20)	IHP-PU2V-6A	1	C-D	FB								See RI-02 <i>[Signature]</i> 5-7-04	<i>[Signature]</i> 5-7-04

REVIEWED AND APPROVED BY:

Q.C. SUPERVISOR Charles DATE 4-23-84

SIZE	EXAM COMP ID NO	DWG. REV. NO.	ASME CAT	COMP FIG	PROCEDURE No.	REV. NO.	EXAM TYPE	EDS NO.	CDS NO.	LSCS CAL STD. NO.	LDS NO.	Q.C. REVIEW SIGNATURE/DATE	AI INIT/DATE
00	01	02	03	04	05	06	07	08	09	10	11	12	13
1-7/8" (10)	ILP-PU2V-3A	1	C-D	FB	4	2	VT		N/A	N/A	N/A	See RI-02 <i>[Signature]</i>	w J Caldwell 5-7-84
1-1/8" (20)	ILP-PU2V-1A	1	C-D	FB	4	2	VT		N/A	N/A	N/A	See RI-02 <i>[Signature]</i>	w Jc 5-9-84
1-1/8" (20)	ILP-PU2V-6A	1	C-D	FB	4	2	VT		N/A	N/A	N/A	See RI-02 <i>[Signature]</i>	w Jc 5-9-84

INSPECTION CHECKLIST

LASALLE COUNTY STATION UNIT 2

IC NO. IRH-PU2AV

Page 1 of 1 Rev. 0

REVIEWED AND APPROVED BY:

Q.C. SUPERVISOR Ch... .. DATE 4-23-84

SIZE	EXAM COMP ID NO	DWG. REV. NO.	ASME CAT	COMP FIG	PROCEDURE No.	REV. NO.	EXAM TYPE	EDS NO.	CDS NO.	LSCS CAL STD. NO.	LDS NO.	Q.C. REVIEW SIGNATURE/DATE	AI INIT/DATE
00	01	02	03	04	05	06	07	08	09	10	11	12	13
1-1/8" (20)	IRH-PU2AV-1A	1	C-D	FB	4	2	VT	N/A	N/A	N/A	N/A	See RI-02 <i>[Signature]</i> 5-7-84	wjc 5-7-84
1-7/8" (10)	IRH-PU2AV-3A	1	C-D	FB	4	2	VT	N/A	N/A	N/A	N/A	See RI-02 <i>[Signature]</i> 5-7-84	wjc 5-7-84
1-1/2" (24)	IRH-PU2AV-6A	1	C-D	FB	4	2	VT	N/A	N/A	N/A	N/A	See RI-02 <i>[Signature]</i> 5-7-84	wjc 5-7-84

REVIEWED AND APPROVED BY:

Q.C. SUPERVISOR Ph... DATE 5-2-84

SIZE	EXAM COMP ID NO	DWG. REV. NO.	ASME CAT	COMP FIG	PROCEDURE No.	REV. NO.	EXAM TYPE	EDS NO.	CDS NO.	LSCS CAL STD. NO.	LDS NO.	Q.C. REVIEW SIGNATURE/DATE	AI INIT/DATE
00	01	02	03	04	05	06	07	08	09	10	11	12	13
1-1/8" (20)	IRH-PU2BV-1A	1	C-D	FB	4	2	VT	N/A	N/A	N/A	N/A	See RI-02 <i>[Signature]</i> 5-2-84	<i>WJC</i> 5-2-84
1-7/8" (10)	IRH-PU2BV-3A	1	C-D	FB	4	2	VT	N/A	N/A	N/A	N/A	See RI-02 <i>[Signature]</i> 5-2-84	<i>WJC</i> 5-2-84
1-1/2" (24)	IRH-PU2BV-6A	1	C-D	FB	4	2	VT	N/A	N/A	N/A	N/A	See RI-02 <i>[Signature]</i> 5-2-84	<i>WJC</i> 5-2-84

REVIEWED AND APPROVED BY:

Q.C. SUPERVISOR Ch... DATE 5-23-84

SIZE	EXAM COMP ID NO	DWG. REV. NO.	ASME CAT	COMP FIG	PROCEDURE No.	REV. NO.	EXAM TYPE	EDS NO.	CDS NO.	LSCS CAL STD. NO.	LDS NO.	Q.C. REVIEW SIGNATURE/DATE	AI INIT/DATE
00	01	02	03	04	05	06	07	08	09	10	11	12	13
1-1/8" (20)	IRH-PU2CV-1A	1	C-D	FB	4	2	VT	N/A	N/A	N/A	N/A	See RI-02 <i>Ch...</i>	<i>wj Caldwell</i> 5-7-84
1-7/8" (10)	IRH-PU2CV-3A	1	C-D	FB	4	2	VT	N/A	N/A	N/A	N/A	See RI-02 <i>Ch...</i>	<i>wjc</i> 5-7-84
1-1/2" (24)	IRH-PU2CV-6A	1	C-D	FB	4	2	VT	N/A	N/A	N/A	N/A	See RI-02 <i>Ch...</i>	<i>wjc</i> 5-7-84

REVIEWED AND APPROVED BY:

Q.C. SUPERVISOR

DATE 4-24-84

SIZE	EXAM COMP ID NO	DWG. REV. NO.	ASME CAT	COMP FIG	PROCEDURE No.	REV. NO.	EXAM TYPE	EDS NO.	CDS NO.	LSCS CAL STD. NO.	LDS NO.	Q.C. REVIEW SIGNATURE/DATE	INIT/DATE
00	01	02	03	04	05	06	07	08	09	10	11	12	13
1-3/4" (32)	IRI-PU2B	0	C-D	FB	4	2	VT	N/A	N/A	N/A	N/A	See RI-02 4-24-84	WJ Cellinal 5-7-84

INSPECTION CHECKLIST
 LASALLE COUNTY STATION UNIT 2

IC NO. IFW-2001 REV. 3
 PAGE 5 of 5
 REVIEWED AND APPROVED BY:

Q.C. SUPERVISOR L.W. Whately DATE 4/3/81

SIZE	EYAM COMP ID NO	DWG. REV. NO. 02	ASME CAT 03	COMP FIG 04	PROCEDURE NO. 05	REV. NO. 06	EXAM TYPE 07	EDS NO. 08	CDS NO. 09	LSCS CAL STD. NO. 10	LDS NO. 11	Q.C. REVIEW SIGNATURE/DATE 12	AI INIT/DATE 13
∞	01												
12"	IFW-2001-29	0	B-F	P-SE	2 1 1	7 6 6	PT UT-0° UT-45°	4444 4496 4510	4495 5005 4209	01-12-02 01-12-02	0045 0048	L.W. Whately 4/3/81	wjc 4-7-81
12"	IFW-2001-29	0	B-F	P-SE	2 1 1	7 6 6	PT UT-0° UT-45°	4444 4573 4667	4572 4666	01-12-03 01-12-03	0048 0047	L.W. Whately 4/3/81	wjc 4-7-81
14"	IFW-2001-29A	0	B-F	SE-N	2 1 1	7 6 6	PT UT-0° UT-45°	15094 29025 29027	29024 29026	01-16-02 01-16-02	29000 29251	L.W. Whately 4/3/81	wjc 4-7-81

INSPECTION CHECKLIST
 LASALLE COUNTY STATION UNIT 2

IC NO. IFW-2002 REV. 3

PAGE 4 of 5

REVIEWED AND APPROVED BY:

Q.C. SUPERVISOR L. J. Wheatley DATE 4/3/81

SIZE	EXAM COMP ID NO	DWG. REV. NO. 02	ASME CAT 03	COMP FIG 04	PROCEDURE NO. 05	REV. NO. 06	EXAM TYPE 07	EDS NO. 08	CDS NO. 09	LSCS CAL STD. NO. 10	LDS NO. 11	Q.C. REVIEW SIGNATURE/DATE 12	AI INIT/DATE 13
∞	01												
12"	IFW-2002-22	0	B-J	P-E	2 1 1	7 6 6	PT UT-0° UT-45°	15115 20415 20418	20414 20417	01-12-02 01-12-02	0055 0053	L. J. Wheatley 4/3/81	w g c 4-7-81
12"	IFW-2002-23	0	B-J	E-P	2 1 1	7 6 6	PT UT-0° UT-45°	15115 20415 20418	20414 20417	01-12-02 01-12-02	0055 0053	L. J. Wheatley 4/3/81	w g c 4-7-81
12"	IFW-2002-24	0	B-J	P-E	2 1 1	7 6 6	PT UT-0° UT-45°	4446 4497 4501	4495 4499	01-12-02 01-12-02	0048 0048	L. J. Wheatley 4/3/81	w g c 4-7-81
12"	IFW-2002-25	0	B-J	E-P	2 1 1	7 6 6	PT UT-0° UT-45°	4446 4497 4501	4495 4499	01-12-02 01-12-02	0048 0048	L. J. Wheatley 4/3/81	w g c 4-7-81
12"	IFW-2002-26	0	B-F	P-SE	2 1 1	7 6 6	PT UT-0° UT-45°	4446 4497 4502	4495 4499	01-12-02 01-12-02	0048 0048	L. J. Wheatley 4/3/81	w g c 4-7-81
12"	IFW-2002-26	0	B-F	P-SE	2 1 1	7 6 6	PT UT-0° UT-45°	4446 4573 4671	4572 4626	01-12-03 01-12-03	0048 0047	L. J. Wheatley 4/3/81	w g c 4-7-81
14"	IFW-2002-26A	0	B-F	SE-N	2 1 1	7 6 6	PT UT-0° UT-45°	15095 29025 29027	29024 29026	01-16-02 01-16-02	29000 28251	L. J. Wheatley 4/3/81	w g c 4-7-81
12"	IFW-2002-27	0	B-J	P-E	2 1 1	7 6 6	PT UT-0° UT-45°	4444 4497 4500	4495 4499	01-12-02 01-12-02	0048 0048	L. J. Wheatley 4/3/81	w g c 4-7-81

INSPECTION CHECKLIST
LASALLE COUNTY STATION UNIT 2

IC NO. IFW-2002 REV. 1

PAGE 5 of 5

REVIEWED AND APPROVED BY:

Q.C. SUPERVISOR L. J. Wheatley DATE 4/3/81

SIZE	EXAM COMP ID NO	DWG. REV. NO. 02	ASME CAT 03	COMP FIG 04	PROCEDURE NO. 05	REV. NO. 06	EXAM TYPE 07	EDS NO. 08	CDS NO. 09	LSCS CAL STD. NO. 10	LDS NO. 11	Q.C. REVIEW SIGNATURE/DATE 12	AI INIT/DATE 13
00	01												
12"	IFW-2002-28	0	B-F	E-P	2 1 1	7 6 6	PT UT-0° UT-45°	4444 4497 4500	4495	01-12-03 01-12-03	0048 0048	L. J. Wheatley 4/3/81	w. J. Caldwell 4-7-81
12"	IFW-2002-29	0	B-F	P-SE	2 1 1	7 6 6	PT UT-0° UT-45°	4492 4497 4501	4495 4499	01-12-02 01-12-02	0048 0048	L. J. Wheatley 4/3/81	w. J. C 4-7-81
12"	IFW-2002-29	0	B-F	P-SE	2 1 1	7 6 6	PT UT-0° UT-45°	4444 4573 4668	4572 4666	01-12-03 01-12-03	0048 0047	L. J. Wheatley 4/3/81	w. J. C 4-7-81
14"	IFW-2002-29A	0	B-F	SE-N	2 1 1	7 6 6	PT UT-0° UT-45°	15094 29025 29027	29024 29026	01-16-02 01-16-02	29000 29251	L. J. Wheatley 4/3/81	w. J. C 4-7-81

INSPECTION CHECKLIST
 LASALLE COUNTY STATION UNIT 2

IC NO. IMS-2004 REV. 2

PAGE 2 of 4

REVIEWED AND APPROVED BY:

Q.C. SUPERVISOR L W Wheatley DATE 7-12-79

SIZE	EXAM COMP ID NO	DWG. REV. NO. 02	ASME CAT 03	COMP FIG 04	PROCEDURE NO. 05	REV. NO. 06	EXAM TYPE 07	EDS NO. 08	CDS NO. 09	LSCS CAL STD. NO. 10	LDS. NO. 11	Q.C. REVIEW SIGNATURE/DATE 12	AI INIT/DATE 13
00	01												
26"	IMS-2004-4LU	0	B-J	L.S.	1 1 2	4 4 5	UT-0° UT-45° PT	5038 1043 12006	5036 1041	01-26-01 01-26-01	6005 63076	L W Wheatley 6/18/81	wgc 6-19-81
26"	IMS-2004-4LD	0	B-J	L.S.	1 1 2	4 4 5	UT-0° UT-45° PT	5038 1044 12006	5036 1041	01-26-01 01-26-01	63076 63076	L W Wheatley 7/27/79	wgc 4-30-81
26"	IMS-2004-4A	0	B-J	P-P	1 1 2	4 4 5	UT-0° UT-45° PT	1038 1033 12009	1037 1032	01-26-01 01-26-01	63076 63076	L W Wheatley 7/27/79	wgc 4-30-81
26"	IMS-2004-4ALU	0	B-J	L.S.	1 1 2	4 4 5	UT-0° UT-45° PT	1038 1033 12009	1037 1032	01-26-01 01-26-01	63076 63076	L W Wheatley 7/27/79	wgc 4-30-81
26"	IMS-2004-4ALD	0	B-J	L.S.	1 1 2	4 4 5	UT-0° UT-45° PT	1038 1035 12009	1037 1034	01-26-01 01-26-01	63076 63076	L W Wheatley 7/27/79	wgc 4-30-81
26"	IMS-2004-5	0	B-J	P-E	1 1 2	4 4 5	UT-0° UT-45° PT	1021 1035 12001	1020 1034	01-26-01 01-26-01	63069 63076	L W Wheatley 7/27/79	wgc 4-30-81
26"	IMS-2004-5LU	0	B-J	L.S.	1 1 2	4 4 5	UT-0° UT-45° PT	1021 1033 12001	1020 1032	01-26-01 01-26-01	63069 63076	L W Wheatley 7/27/79	wgc 4-30-81
26"	IMS-2004-6	0	B-J	E-P	1 1 2	4 4 5	UT-0° UT-45° PT	1022 1040 12010	1020-80 1022 1039	5-2-84 01-26-01 01-26-01	63069 63069	L W Wheatley 7/27/79	wgc 4-30-81

REVIEWED AND APPROVED BY:

Q.C. SUPERVISOR C. H. ... DATE 4-2-84

SIZE	EXAM COMP ID NO	DWG. REV. NO.	ASME CAT	COMP FIG	PROCEDURE No.	REV. NO.	EXAM TYPE	EDS NO.	CDS NO.	LSCS CAL STD. NO.	LDS NO.	Q.C. REVIEW SIGNATURE/DATE	AI INIT/DATE
00	01	02	03	04	05	06	07	08	09	10	11	12	13
1-1/4" (20)	2B21-F418A	0	C-D	VB	4	2	VT	N/A	N/A	N/A	N/A	See RI-02 <i>P.H. ...</i>	w J. Calhoun 5-7-84
1-1/4" (20)	2B21-F418B	0	C-D	VB	4	2	VT	N/A	N/A	N/A	N/A	See RI-02 <i>P.H. ...</i>	w J.C. 5-7-84

REVIEWED AND APPROVED BY:

Q.C. SUPERVISOR [Signature]

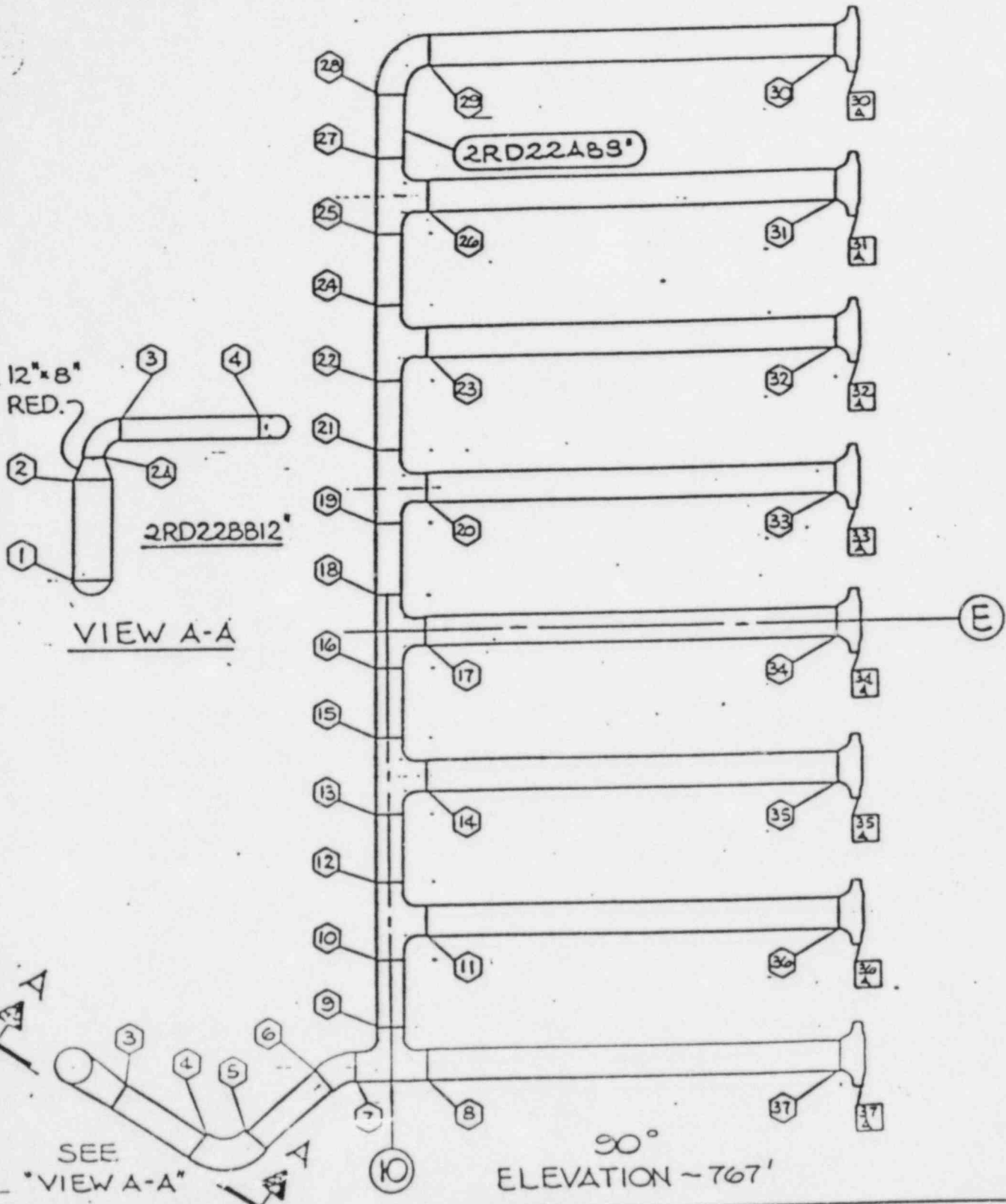
DATE 5-23-84

SIZE	EXAM COMP ID NO	DWG. REV. NO.	ASME CAT	COMP FIG	PROCEDURE No.	REV. NO.	EXAM TYPE	EDS NO.	CDS NO.	LSCS CAL STD. NO.	LDS NO.	Q.C. REVIEW SIGNATURE/DATE	AI INIT/DATE
00	01	02	03	04	05	06	07	08	09	10	11	12	13
26"	2821-F0220	N/A	B-M-2	VBody	N/A	N/A	MT	N/A	N/A	N/A	N/A	See PSI Ref. No. 2-MSV-2	w J Caldwell 5-7-84
26"	2821-F0280	N/A	B-M-2	VBody	N/A	N/A	MT	N/A	N/A	N/A	N/A	See PSI Ref. No. 2-MSV-2	w J Caldwell 5-9-84

REVIEWED AND APPROVED BY:

Q.C. SUPERVISOR Ch... DATE 5-24-84

SIZE	EXAM COMP ID NO	DWG. REV. NO.	ASME CAT	COMP FIG	PROCEDURE No.	REV. NO.	EXAM TYPE	EDS NO.	CDS NO.	LSCS CAL STD. NO.	LDS NO.	Q.C. REVIEW SIGNATURE/DATE	AI INIT/DATE
00	01	02	03	04	05	06	07	08	09	10	11	12	13
1-3/8" (12)	INB-2001B-1	0	B-G-2	FB	4	2	VT	4007 <i>02</i>	N/A	N/A	N/A	<i>Ch...</i> 5-2-84	<i>w J Caldwell</i> 5-7-84
1" (8)	INB-2001B-8	0	B-G-2	FB	4	2	VT	4007 <i>02</i>	N/A	N/A	N/A	<i>Ch...</i> 5-2-84	<i>w J Caldwell</i> 5-7-84

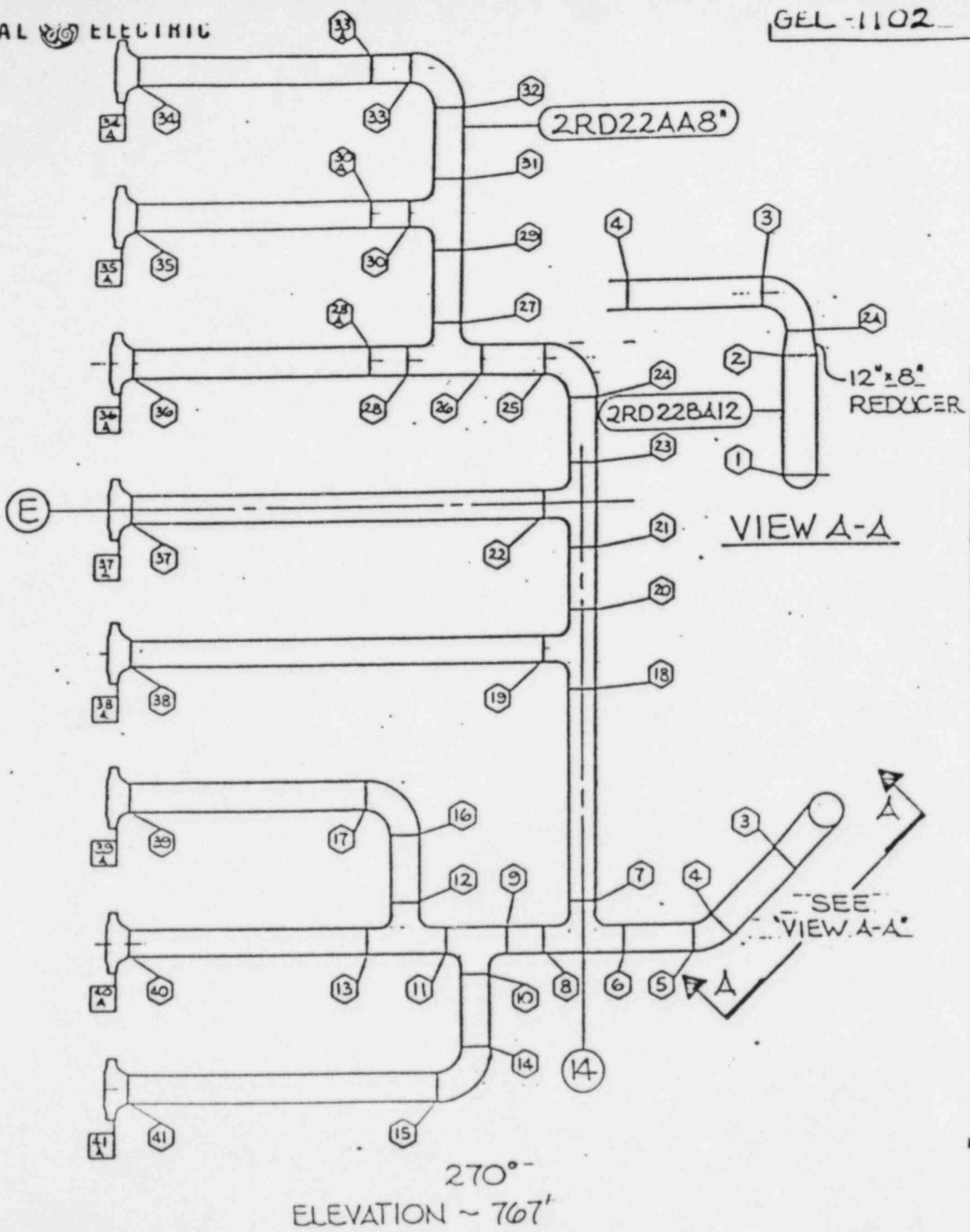


REVISIONS

REDRAWN MM 8-8-80

2RDOO22-1 @ 90°
LSCS SCRAM DISCHARGE HEADER

G.D. CONNELLY ISSUED 8-8-80	FILED 8-27-80	OAKBROOK LOC	GEL-1101
-----------------------------------	------------------	-----------------	----------



REVISIONS	
REDRAWN	8-8-80

2RDO022-2 @ 270°
LSCS SCRAM DISCHARGE HEADER

MADE BY	DATE	APPROVALS	DESIGNER	CIVIL
	8-8-80		CAK BROOK	

SIZE	EXAM COMP ID NO	DWG. REV. NO.	ASME CAT	COMP FIG	PROCEDURE No.	REV. NO.	EXAM TYPE	EDS NO.	CDS NO.	LSCS CAL STD. NO.	LDS NO.	Q.C. REVIEW SIGNATURE/DATE	AI INIT/DATE
00	01	02	03	04	05	06	07	08	09	10	11	12	13
24"	IRR-2006-1	0	B-J	P-PU	2 1 1	5 4 4	PT UT-0° UT-45°	14001 8117 8111	8116 8110	01-24-01 01-24-01	0088 0088	also 3096 also 3099 <u>Ch... 4-3-84</u>	w j c 4-4-84
24"	IRR-2006-1LD	0	B-J	LS	2 1 1	5 4 4	PT UT-0° UT-45°	14001 8117 3099	8116 3098	01-24-01 01-24-01	0088 0066	also 3096 <u>Ch... 4-3-84</u>	w j c 4-4-84
4"	IRR-2006-3	0	B-J	P-W	2	5	PT	14004	N/A	N/A	N/A	<u>Ch... 4-3-84</u>	w j c 4-4-84
4"	IRR-2006-4	0	B-J	P-W	2 1 1	5 4 4	PT UT-0° UT-45°	14004 3125 3127	3124 3126	01-04-05 01-04-05	0006 0006	<u>Ch... 4-3-84</u>	w j c 4-4-84
4"	IRR-2006-5	0	B-J	P-F	2 1 1	5 4 4	PT UT-0° UT-45°	14004 3125 3127	3124 3126	01-04-05 01-04-05	0006 0006	<u>Ch... 4-3-84</u>	w j c 4-4-84
4"	IRR-2006-7	0	B-J	P-V	2 1 1	5 4 4	PT UT-0° UT-45°	14001 8117 8111	8116 8110	01-24-01 01-24-01	0088 0088	also 3096 also 3099 <u>Ch... 4-3-84</u>	w j c 4-4-84
24"	IRR-2006-7LU	0	B-J	LS	2 1 1	5 4 4	PT UT-0° UT-45°	14001 8117 8111	8116 8110	01-24-01 01-24-01	0088 0088	also 3096 also 3099 <u>Ch... 4-3-84</u>	w j c 4-4-84
24"	IRR-2006-8	0	B-J	V-P	2 1 1	5 4 4	PT UT-0° UT-45°	14003 8117 8111	8116 8110	01-24-01 01-24-01	0088 0088	also 3116 also 3120 <u>Ch... 4-3-84</u>	w j c 4-4-84
24"	IRR-2006-8LD	0	B-J	LS	2 1 1	7 6 6	PT UT-0° UT-45°	14003 8117 8111	8116 8110	01-24-01 01-24-01	0088 0088	also 3118 also 3120 <u>Ch... 4-3-84</u>	w j c 4-4-84

Q.C. SUPERVISOR Ch... DATE 4-3-84

SIZE	EXAM COMP ID NO	DWG. REV. NO.	ASME CAT	COMP FIG	PROCEDURE No.	REV. NO.	EXAM TYPE	EDS NO.	CDS NO.	LSCS CAL STD. NO.	LDS NO.	Q.C. REVIEW SIGNATURE/DATE	AT INIT/DATE	
00	01	02	03	04	05	06	07	08	09	10	11	12	13	
24"	IRR-2006-9	0	B-J	P-E	2 1 1	5 4 4	PT UT-0° UT-45°	14003 8117 8111	8116 8110	01-24-01 01-24-01	0088 0088	also 3116 also 3120	<u>Ch...</u> <u>4-3-84</u>	wjc 4-4-84
24"	IRR-2006-9LU	0	B-J	LS	2 1 1	5 4 4	PT UT-0° UT-45°	14003 8117 8111	8116 8110	01-24-01 01-24-01	0088 0088	also 3116 also 3120	<u>Ch...</u> <u>4-3-84</u>	wjc 4-4-84
4"	IRR-2006-9ALD	0	B-J	I ALS	2 1 1	5 4 4	PT UT-0° UT-45°	14003 8117 8111	8116 8110	01-24-01 01-24-01	0088 0088	also 3116 also 3120	<u>Ch...</u> <u>4-3-84</u>	wjc 4-4-84
4"	IRR-2006-9BLD	0	B-J	O ALS	2 1 1	5 4 4	PT UT-0° UT-45°	14003 8117 8111	8116 8110	01-24-01 01-24-01	0088 0088	also 3116 also 3120	<u>Ch...</u> <u>4-3-84</u>	wjc 4-4-84
4"	IRR-2006-10	0	B-J	E-P	2 1 1	6 6 6	PT UT-0° UT-45°	20001 8117 8111	8116 8110	01-24-01 01-24-01	0088 0088	also 20431 also 20457	<u>Ch...</u> <u>4-3-84</u>	wjc 4-4-84
4"	IRR-2006-10ALU	0	B-J	I ALS	2 1 1	5 4 4	PT UT-0° UT-45°	14003 8117 8111	8116 8110	01-24-01 01-24-01	0088 0088	also 3116 also 3121	<u>Ch...</u> <u>4-3-84</u>	wjc 4-4-84
24"	IRR-2006-10BLU	0	B-J	O ALS	2 1 1	5 4 4	PT UT-0° UT-45°	15012 8117 8111	8116 8110	01-24-01 01-24-01	0088 0088	also 3116 also 3120	<u>Ch...</u> <u>4-3-84</u>	wjc 4-4-84
24"	IRR-2006-10LD	0	B-J	LS	2 1 1	6 6 6	PT UT-0° UT-45°	20001 8117 8111	8116 8110	01-24-01 01-24-01	0088 0088	also 20431 also 20457	<u>Ch...</u> <u>4-3-84</u>	wjc 4-4-84
24"	IRR-2006-11	0	B-J	P-V	2 1 1	6 5 5	PT UT-0° UT-45°	19001 8117 8111	8116 8110	01-24-01 01-24-01	0088 0088	also 19003 also 19005	<u>Ch...</u> <u>4-3-84</u>	wjc 4-4-84

SIZE	EXAM COMP ID NO	DWG. REV. NO.	ASME CAT	COMP FIG	PROCEDURE No.	REV. NO.	EXAM TYPE	EDS NO.	CDS NO.	LSCS CAL STD. NO.	LDS NO.	Q.C. REVIEW SIGNATURE/DATE	AI INIT/DATE
00	01	02	03	04	05	06	07	08	09	10	11	12	13
24"	IRR-2006-11LU	0	B-J	LS	2 1 1	6 5 5	PT UT-0° UT-45°	19001 8117 8111	8116 8110	01-24-01 01-24-01	0088 0088	also 19003 also 19005 <u>Chen</u> 4-3-84	w j c 4-4-84
24"	IRR-2006-12	0	B-J	V-E	2 1 1	5 4 4	PT UT-0° UT-45°	14002 8119 8121	8118 8120	01-24-07 01-24-07	0088 0088	also 3094 also 5167 <u>Chen</u> 4-3-84	w j c 4-4-84
4"	IRR-2006-12ALD	0	B-J	I ALS	2 1 1	5 4 4	PT UT-0° UT-45°	14002 8119 8121	8118 8120	01-24-07 01-24-07	0088 0088	also 3094 also 5167 <u>Chen</u> 4-3-84	w j c 4-4-84
4"	IRR-2006-12BLD	0	B-J	O ALS	2 1 1	5 4 4	PT UT-0° UT-45°	14002 8119 8121	8118 8120	01-24-07 01-24-07	0088 0088	also 3094 also 5167 <u>Chen</u> 4-3-84	w j c 4-4-84
4"	IRR-2006-13	0	B-J	E-P	2 1 1	7 6 6	PT UT-0° UT-45°	18838 8117 8111	8116 8110	01-24-01 01-24-01	0088 0088	also 18840 also 18844 <u>Chen</u> 4-3-84	w j c 4-4-84
4"	IRR-2006-13ALU	0	B-J	I ALS	2 1 1	5 6 6	PT UT-0° UT-45°	14002 8119 8121	8118 8120	01-24-07 01-24-07	0088 0088	also 18835 also 18846 also 18848 <u>Chen</u> 4-3-84	w j c 4-4-84
24"	IRR-2006-13BLU	0	B-J	O ALS	2 1 1	5 6 6	PT UT-0° UT-45°	14002 8119 8121	8118 8120	01-24-07 01-24-07	0088 0088	also 18838 also 18846 also 18849 <u>Chen</u> 4-3-84	w j c 4-4-84
24"	IRR-2006-14	0	B-J	P-P	2 1 1	7 6 6	PT UT-0° UT-45°	18838 8117 8111	8116 8110	01-24-01 01-24-01	0088 0088	2 NCR-4 also 18840 also 18843 <u>Chen</u> 4-3-84	w j c 4-4-84
24"	IRR-2006-14LD	0	B-J	LS	2 1 1	5 4 4	PT UT-0° UT-45°	14002 8117 8111	8116 8110	01-24-01 01-24-01	0088 0088	also 3123 also 3099 <u>Chen</u> 4-3-84	w j c 4-4-84

INSPECTION CHECKLIST
 LASALLE COUNTY STATION UNIT 2

IC NO. IRR-2006
 Page 4 of 4 Rev. 0
 REVIEWED AND APPROVED BY:

Q.C. SUPERVISOR Ch... 4-3-84 DATE 4-3-84

SIZE	EXAM COMP ID NO	DWG. REV. NO. 02	ASME CAT 03	COMP FIG 04	PROCEDURE No. 05	REV. NO. 06	EXAM TYPE 07	EDS NO. 08	CDS NO. 09	LSCS CAL STD. NO. 10	LDS NO. 11	Q.C. REVIEW SIGNATURE/DATE 12	AT INIT/DATE 13
24"	IRR-2006-15	0	B-J	P-W	2 1 1	5 4 4	PT UT-0° UT-45°	15013 3/23 3/29	3/22 3/28	01-24-01 01-24-01	0006 0006	<u>Ch... 4-3-84</u>	wjc 4-4-84
24"	IRR-2006-16	0	B-J	P-P	2 1 1	5 4 4	PT UT-0° UT-45°	14003 3/23 3/29	3/22 3/28	01-24-01 01-24-01	0006 0006	<u>Ch... 4-3-84</u>	wjc 4-4-84
24"	IRR-2006-16LD	0	B-J	LS	2 1 1	5 4 4	PT UT-0° UT-45°	14003 3/23 3/29	3/22 3/28	01-24-01 01-24-01	0006 0006	<u>Ch... 4-3-84</u>	wjc 4-4-84
24"	IRR-2006-16LU	0	B-J	LS	2 1 1	5 4 4	PT UT-0° UT-45°	14003 3/23 3/29	3/22 3/28	01-24-01 01-24-01	0006 0006	<u>Ch... 4-3-84</u>	wjc 4-4-84

NONCONFORMITY REPORT

REVISION NO. 0

Project LaSalle 2 PSI Report No. 2NCR-11

Initiated By L W Wheatley Date 8/21/80

Project No. LCS-PO173-2 Drawing No. IRI-2023

Item, Assembly Joint No. Welds IRI-2023-3,5

Heat & Lot, Serial No. (if applicable) NA

Identity Record No. Nonconformity Noted (Traveler, RIR, Item List UT, RT Report, etc.) No. NA

Description of Nonconformity

Welds IRI-2023-3 (Pipe to Valve) and IRI-2023-5 (Pipe to Elbow) have through wall defects as evidenced by leakage on pipe exterior. Weld -3 has two areas on pipe side; 0-10" from weld toe = at 3.2" & 3.45" CCW. Weld -5 has one area on pipe side; 0-10" from weld toe = at 4.2" C.W.

Proposed Resolution

RESOLUTION PER CELO

Signature [Signature] Date 8/21/80

Comments THE DEFECTIVE PORTION OF PIPE HAS BEEN REMOVED, AND REPLACE WITH NEW PIPE. SEE PSI-REF. NO. 2-R1-41 FOR RE-INSPECTION SEE ATTACHED SHEETS (8) FOR DETAILS.

Resolution Approved By L W Wheatley Date 8/21/80

Reviewed with ANI By w g Caldwell Date 4-9-84

Completed [Signature] Date 3-6-84

EXHIBIT 3

ULTRASONIC EXAMINATION DATA SHEET

LaSALLE COUNTY NUCLEAR STATION UNIT 2

PROCEDURE NO. MPUP-5751 REV. 6

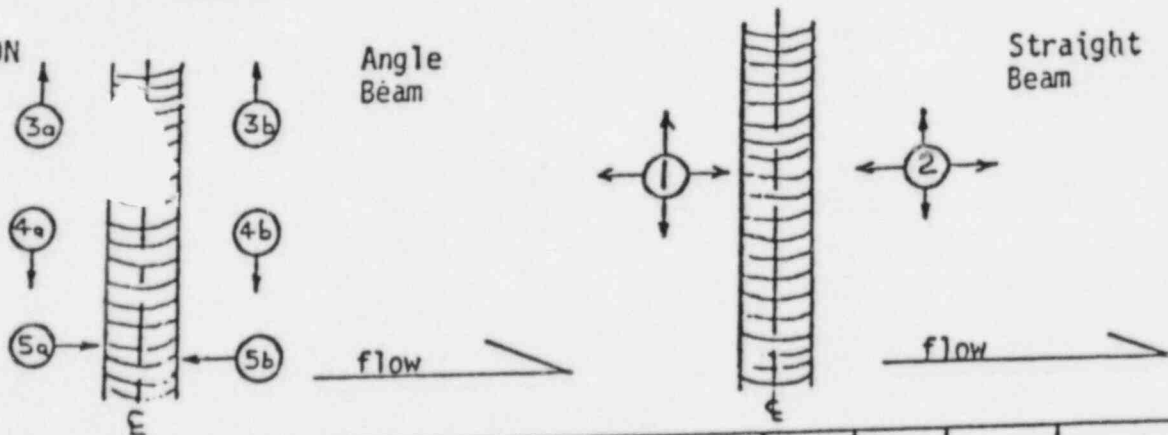
EXAMINATION PERSONNEL:
NAME Jerry Schmitgel LEVEL II; NAME John E. Hoff LEVEL IV

SEARCH UNIT BEAM ANGLE: 0°; 45°; 60°; OTHER _____

COUPLANT: GLYCERINE: X ULTRAGEL II: _____ OTHER _____

SCAN SENSITIVITY: (+) _____ 8 dB

SCAN ORIENTATION



1980

DATE	LINE NO.	EXAM I.D.	COMP FIG.	MAX AMP	L ₁ /W ₁	L _m /W _m	L ₂ /W ₂	MP ₁	MP _m	MP ₂	SCAN	STAT.	COMMENT!
8/14	1	JNP-2005 28A	P-E	+4 100%	360	INT 1.60			.45		SB	E	

REVIEWED BY: NDE SUPERVISOR SD Connelly DATE 8/15/80
 QC SUPERVISOR [Signature] DATE 5/29/81
 AUTHORIZED INSPECTOR [Signature] DATE 5-7-84

LASALLE UNIT 2

$T_p =$ 0.40

WELD JHP-2005-28A

$T_w =$ 0.44

EDS 4381 Pg 1 of P 2

$T_f =$ 0.40

GENERAL  ELECTRIC



LINE	EVALUATION
3	ID geometry from weld root. Pg 2
1	

EVALUATED BY L D Whately
Level III

DATE 10/27/80

REVIEWED BY w g Caldwell
ANII

DATE 11-3-80

LASALLE UNIT 2

T_F = 40

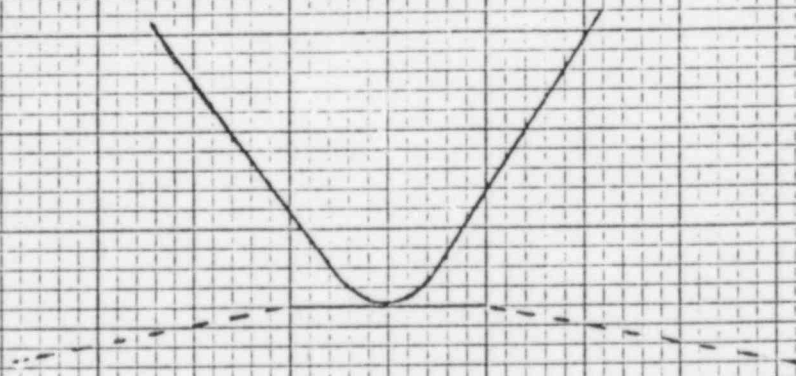
WELD IMP-2005-28A

T_W = 44

EDS 4381 Pg 2

T_E = 44

GENERAL  ELECTRIC



LINE	EVALUATION
P2 1	Field examination of this weld on weld 28 failed to reveal this indication on any beam. As at this metal path (45") it would lie within the near field, this is probably a false indication.

EVALUATED BY Y. J. Whitten
Level III

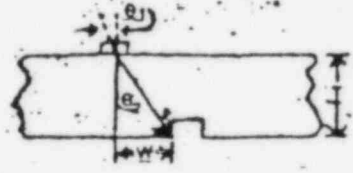
DATE 5/24/81

REVIEWED BY W. J. Caldwell
ANII

DATE 3-12-84

INSTALLATION & SERVICE ENGINEERING DIVISION

A. Procedure No. MPUP-5751 REV. 4
 Examination Personnel: NAME Jim Miller LEVEL II NAME Justus Schmitz LEVEL IT
 Instruments SERIAL NO. 273 MAKE/MODEL: - BRANSON/303: SONIC/MK I; KK/USL32; OTHER Model 303
 D. Search Unit: BEAM ANGLE/MODE: STRAIGHT BEAM/LONG WAVE; 45°/TRANS WAVE; 60°/TRANS WAVE
 TRANSDUCER SIZE/FREQ: 0.25" DIA/2.25 MHz; 0.5" DIA/2.25 MHz; 1.0" DIA/2.25 MHz
 SERIAL NO.: B12904; 1.0" DIA/2.25 MHz; 0.5"x0.5"/2.25 MHz
 TRANSDUCER TYPE: CERAMIC SINGLE ELEMENT CERAMIC DUAL ELEMENT OTHER
 WEDGE TYPE: STANDARD WEDGE SPECIAL WEDGE/TYPE
 CALCULATED BEAM ANGLE IN MATERIAL: $\theta_2 = 45^\circ$



$$\theta = \text{ARC TAN} \left(\frac{W}{T} \right) = \frac{560}{560} = 1$$

T = CAL STD. THICKNESS

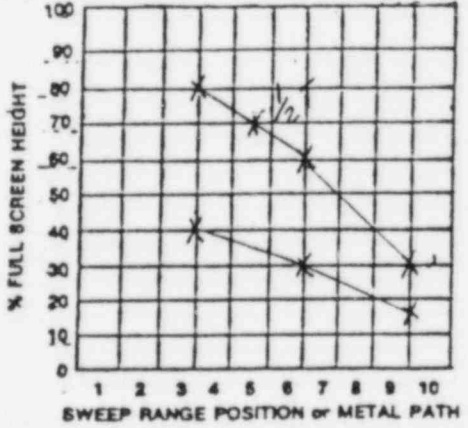
E. Cable LENGTH: 6 FT. TYPE: RG-58 RG-59 RG-57 RG-174 OTHER
 F. Calibration Orientation: CALIBRATION REFERENCE REFLECTOR: PARALLEL TRANSVERSE TO PIPE AXIS
 FOR DUAL ELEMENT: SPLIT FOR MAXIMUM RESPONSE PARALLEL TRANSVERSE to hole centerline
 G. Calibration Standards: LSCS CAL STD. NO. 01-06-03 THICKNESS .560 DIAMETER 6"
 MATERIAL: CARBON STAINLESS INCONEL OTHER
 H. Couplant: GLYCERINE ULTRAGEL II OTHER
 I. Comments:

6" OD FOR 1/2" T HOLE AT 100% DAC

J. Dac Curve - Data SRP; MP in inches

TOP OF	PEAK AMP	W1	Wm	W2	SRP or 1 MP1	SRP or m MPm	SRP or 2 MPz	HOLE DEPTH
01	02	03	04	05	06	07	08	
WT or 1/8 Vis	80%		.560			3.0		
WT or 3/8 Vis	60%		12			6.0		
WT or 1/2 Vis	30%		168			9.0		
B.R. or 1/8 Vis	100		10			4.4	.280	

K. Dac Curve - Screen Representation



L. Instrument Settings/Checks

CONTROLS	SET	CHECK BOXES							
		02	03	04	05	06	07	08	09
GAIN	58	X	X	X					
SCAN GAIN	66	X	X	X					
SWEEP	10/9.68	X	X	X					
DELAY	1/384	X	X	X					
FILTER	1	X	X	X					
REP RATE	250	X	X	X					
DAMPENING	OFF	X	X	X					
...	OFF	X	X	X					
...	N/A	X	X	X					

M. Calibration Time - Records

DATE	01 ORIG. CAL TIME	02 CAL CHECK TIME	03 LAST E.D.S. #	04 LAST E.D.S. LINE #	05 VERIFICATION OF 25°F LIMIT (YES/NO)
8-29-79	8:00	N/A	5299	7	YES
8-29-79	N/A	11:00	5300	8	YES
8-29-79	N/A	12:30	5301	6	YES
8-29-79	N/A	15:00	5301	6	YES
8-29-79	N/A	15:00	5702	6	YES
8-29-79	N/A	15:00	5303	5	YES

N. Reviewed By: NDE SUPERVISOR AD Connelly
 Q.C. SUPERVISOR Salahuddin
 AUTHORIZED INSPECTOR W J Caldwell

DATE 8/30/79
 DATE 9/4/79
 DATE 9-21-79

EXHIBIT 3

ULTRASONIC EXAMINATION DATA SHEET

LaSALLE COUNTY NUCLEAR STATION UNIT 2

PROCEDURE NO. MPUP 5751 REV. 6

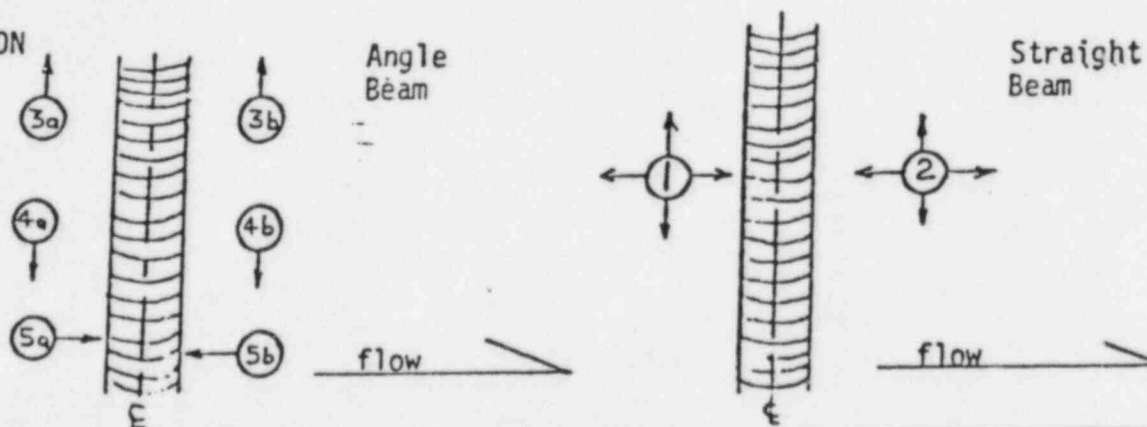
EXAMINATION PERSONNEL:
 NAME Ca Honler LEVEL II; NAME JE Casey LEVEL IA

SEARCH UNIT BEAM ANGLE: 0°; 45°; X 60°; OTHER _____

COUPLANT: GLYCERINE: X ULTRAGEL II: _____ OTHER _____

SCAN SENSITIVITY: (+) 8 dB

SCAN ORIENTATION



1980 DATE	LINE NO.	EXAM I.D.	COMP FIG.	MAX AMP	L1/W1	Lm/Wm	L2/W2	MP1	MPm	MP2	SCAN	STAT.	COMMENT	
10-2	1	IRI 2030 13	EP	75	360 INT				.80		5A	E	*	
10-2	2	13	EP	100 +2	360 INT				.90		5A	E	*	
10-2	3	13	EP	75	360 INT				.45		5A	E		
10-2	4	13	EP	75	360 INT				1.50		5A	E	* FDNS	
10-2	5	13	EP	60	360 INT				1.70		5A	E	* FDNS	
10-2	6	13	EP	100 +2	12.3 .5	12.55 .7	12.65 3.3	No MEASURABLE 100-100% LENGTH			1.1 1.2 1.4	3B	E	FDOD
10-2	7	13	EP	75	13.1 .5	13.25 .7	13.45 2.4	2.1	2.25	2.3	3B	E	FDOD	

REVIEWED BY:
 NDE SUPERVISOR SP Connelly DATE 10/3/80
 QC SUPERVISOR WJ Whately DATE 10/14/80
 AUTHORIZED INSPECTOR wj Calabrese DATE 5-7-84

LASALLE UNIT 2

$T_p =$.34

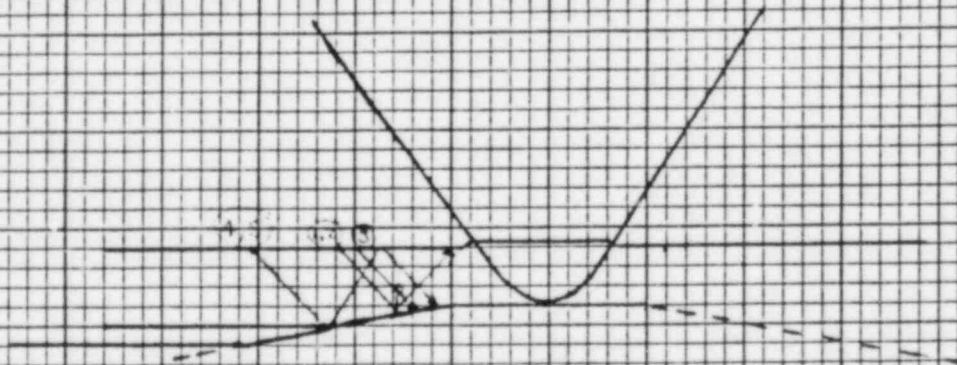
WELD IRI-2030-13

$T_w =$.33

EDS 18379

$T_E =$.50

GENERAL  ELECTRIC



LINE	EVALUATION
1,2	OD geometry from weld cap
3,4,5	ID geometry from counterbore
6,7	Based on metal path this appears to be a localized area of ID geometry (ie draw mark) ^{in the base metal} . RT showed nothing in this area. As there is no 100-100 length this would be acceptable per NB-5330(a)!

EVALUATED BY L D Wheatley
Level IIIIC

DATE 10/14/81

REVIEWED BY W J Caldwell
ANII

DATE 5-7-84

EXHIBIT 3

ULTRASONIC EXAMINATION DATA SHEET

LaSALLE COUNTY NUCLEAR STATION UNIT 2

PROCEDURE NO. IMPUP-5751 REV. 6

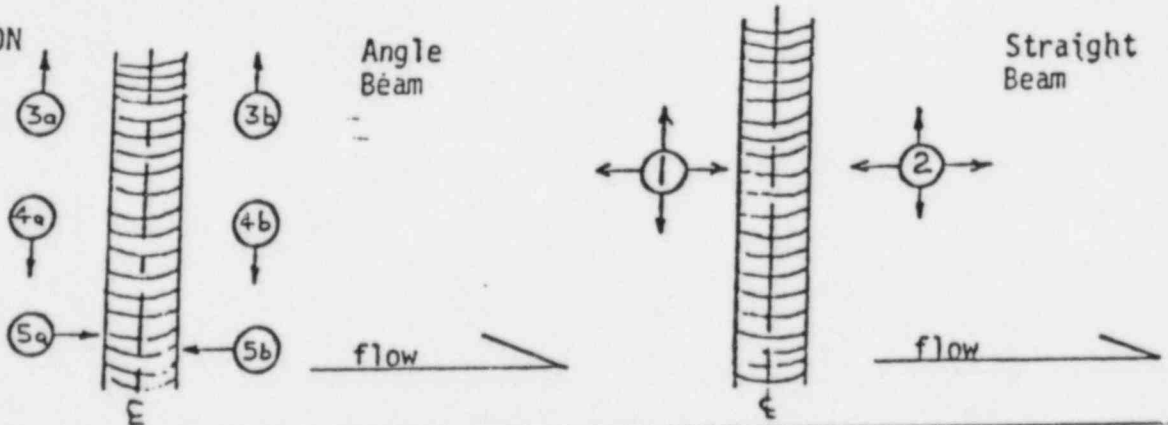
EXAMINATION PERSONNEL:
 NAME CA Hombler LEVEL II; NAME JE Carty LEVEL IT

SEARCH UNIT BEAM ANGLE: 0°; 45° X 60°; OTHER

COUPLANT: GLYCERINE: X ULTRAGEL II: OTHER

SCAN SENSITIVITY: (+) 8 dB

SCAN ORIENTATION



1980 DATE	LINE NO.	EXAM I.D.	COMP FIG.	MAX AMP	L1/W1	Lm/Wm	L2/W2	MP1	MPm	MP2	SCAN	STAT.	COMMENT
10-2	1	IRI-2030 10	P-E	60%	360	INT	.7		.55		5B	E	WELD CAP=.9"
10-2	2	IRI-2030 10	P-E	75%	360	INT	1.7		1.95		5B	E	FDFS
10-2	3	IRI-2030 10	P-E	60%	360	INT	1.05		1.45		5B	E	FDCL
10-2	4	IRI-2030 10	P-E	100%	27.25	27.1	26.8	1.15	1.30	1.45	4B	E	FDOD
10-2	5	IRI-2030 11	E-P	100% +6	360	CONT	.25		1.05		5A	A	WELD CAP=1.1" FDFS
10-2	6	IRI-2030 11	E-P	60%	360	INT	.85		2.05		5A	E	FDCL
10-2	7	IRI-2030 11	E-P	100% +2	360	INT	1.30		1.5		5A	E	FDFS
10-2	8	IRI-2030 11	E-P	100%	360	INT	.10		1.0		5B	A	FDFS

REVIEWED BY:
 NDE SUPERVISOR AJ Connelly
 QC SUPERVISOR WJ Whittle
 AUTHORIZED INSPECTOR WJ Whittle

DATE 10/3/80
 DATE 10/14/81
 DATE 5-7-84

VISUAL EXAMINATION

Site LASALLE UNIT #2 Preservice ISI DATE 2-23-84

Examiner and Level K.K. CHERIAN LEVEL III

Procedure PVI - 5751 Revision 2

I Hangers and Supports Discontinuities

- A. Settings
- B. Misalignment
- C. Broken Members
- D. Gouges
- E. Arc Strikes
- F. Grind Marks
- G. Movement
- H. Evidence of Leakage

II Pipe Welds and Base Material Discontinuities

- A. Ground Blend Areas
- B. Undercuts
- C. Corrosion Buildup
- D. Gouges
- E. Evidence of Leakage
- F. Arc Strikes
- G. Cracks

III Bolts, Studs and Washers Discontinuities

- A. Loose Members
- B. Cracks
- C. Corrosion
- D. Gouges
- E. Thread Damage

IV Pump and Valve Bodies, Casings, Internals Discontinuities

- A. Pitting
- B. Corrosion
- C. Erosion
- D. Foreign Material
- E. Gouges
- F. Wear
- G. Cracks

The Component Classification Number and Discontinuity Letter from above are to be used when completing attachment 2.

VT EXAMINATION DETAILS

Direct Visual; Remote Visual. Surface Condition CLEAN & DRY

Surface Preparation Methods/Tools Used (if any) NONE

Illumination Instruments Used NONE

Direct Visual Aides Used NONE

Remote Visual Equipment Used NONE

VISUAL EXAMINATION REPORT

LINE NO.	EXAM/COMPONENT I. D. NO.	SYS.	DWG.	SKETCH		DISCONTINUITIES	PHOTO	
				YES *	NO		ROLL	FRAME
1	INB-2001B-1	INB	INB 2001	N/A	N/A	NONE	N/A	N/A
2	INB-2001B-8	INB	INB 2001	N/A	N/A	NONE	N/A	N/A
3								
4								
5								
6								
7								
8								
9								
10								
11								
12								
13								
14								
15								

* Attached

REVIEWED BY AND LEVEL Ch... Date: 4-23-84

A.N.I. W J Caldwell Date: 5-7-84

INSPECTION CHECKLIST

LASALLE COUNTY STATION UNIT 2

IC NO. IMS-2016S ^{Exempt}
 Page 1 of 3 Rev 0
 REVIEWED AND APPROVED BY

Q.C. SUPERVISOR Ph. M. M. DATE 2-28-84

SIZE	EXAM COMP ID NO	DWG. REV. NO.	ASME CAT	COMP FIG	PROCEDURE No.	REV. NO.	EXAM TYPE	EDS NO.	CDS NO.	LSCS CAL STD. NO.	LDS NO.	Q.C. REVIEW SIGNATURE/DATE	AI INIT/DATE
00	01	02	03	04	05	06	07	08	09	10	11	12	13
N/A	IMS-2016-7A (2MS04-2695S)	N/A	N/A	ATT	N/A	N/A	VT		N/A	N/A	N/A	See PSI Ref. No. 2MS-90	w j c 2-28-84
N/A	IMS-2016-12A-B- C-D-E-F-G H (2MS04-2691S)	N/A	N/A	ATT	N/A	N/A	VT		N/A	N/A	N/A	See PSI Ref. No. 2MS-91	w j c 2-28-84
N/A	IMS-2016-10A-B- C-D-E-F-G-H (MS04-2694S)	N/A	N/A	ATT	N/A	N/A	VT		N/A	N/A	N/A	See PSI Ref. No. 2MS-92	w j c 2-28-84
N/A	IMS-2016-23A-B- C-D-E-F-G-H (MS04-2690S)	N/A	N/A	ATT	N/A	N/A	VT		N/A	N/A	N/A	See PSI Ref. No. 2MS-93	w j c 2-28-84
N/A	IMS-2016-26A-B- C-D-E-F-G-H (MS04-2696S)	N/A	N/A	ATT	N/A	N/A	VT		N/A	N/A	N/A	See PSI Ref. No. 2MS-94	w j c 2-28-84
N/A	IMS-2016-39C-D- E-F-G-H-J-K (MS04-2711S)	N/A	N/A	ATT	N/A	N/A	VT		N/A	N/A	N/A	See PSI Ref. No. 2MS-95	w j c 2-28-84
N/A	IMS-2016-29A-B- C-D-E-F-G-H (MS04-2689S)	N/A	N/A	ATT	N/A	N/A	VT		N/A	N/A	N/A	See PSI Ref. No. 2MS-96	w j c 2-28-84
N/A	IMS-2016-41A-B- C-D-E-F-G-H (MS04-2987S)	N/A	N/A	ATT	N/A	N/A	VT		N/A	N/A	N/A	See PSI Ref. No. 2MS-97	w j c 2-28-84
N/A	IMS-2016-13-14- 15-16 (No Hangers)	N/A	N/A	ATT	N/A	N/A	VT		N/A	N/A	N/A	See PSI Ref. No. 2MS-98	w j c 5-7-84

INSPECTION CHECKLIST
 LASALLE COUNTY STATION UNIT 2

Exempt
 IC NO. IMS-2016S
 Page 2 of 3 Rev 0
 REVIEWED AND APPROVED BY

Q.C. SUPERVISOR Ch... DATE 2-24-84

SIZE	EXAM COMP ID NO	DWG. REV. NO.	ASME CAT	COMP FIG	PROCEDURE No.	REV. NO.	EXAM TYPE	EDS NO.	CDS NO.	LSCS CAL STD. NO.	LDS NO.	Q.C. REVIEW SIGNATURE/DATE	AT INIT/DATE
00	01	02	03	04	05	06	07	08	09	10	11	12	13
N/A	IMS-2016-30-31-32-33 (No Hangers)	N/A	N/A	ATT	N/A	N/A	VT		N/A	N/A	N/A	See PSI Ref. No. 2MS-99	w Jc 5-7-84
N/A	MS04-2695S	N/A	N/A	SUP	N/A	N/A	VT		N/A	N/A	N/A	See MCCO Final Line Walk (Support) Package 2MS-02	
N/A	MS04-2660C	N/A	N/A	SUP	N/A	N/A	VT		N/A	N/A	N/A	See MCCO Final Line Walk (Support) Package 2MS-02	
N/A	MS04-2694S	N/A	N/A	SUP	N/A	N/A	VT		N/A	N/A	N/A	See MCCO Final Line Walk (Support) Package 2MS-02	
N/A	MS04-2692S	N/A	N/A	SUP	N/A	N/A	VT		N/A	N/A	N/A	See MCCO Final Line Walk (Support) Package 2MS-02	
N/A	MS04-2691S	N/A	N/A	SUP	N/A	N/A	VT		N/A	N/A	N/A	See MCCO Final Line Walk (Support) Package 2MS-02	
N/A	MS04-2659C	N/A	N/A	SUP	N/A	N/A	VT		N/A	N/A	N/A	See MCCO Final Line Walk (Support) Package 2MS-02	
N/A	MS04-2988S	N/A	N/A	SUP	N/A	N/A	VT		N/A	N/A	N/A	See MCCO Final Line Walk (Support) Package 2MS-02	
N/A	MS04-2690S	N/A	N/A	SUP	N/A	N/A	VT		N/A	N/A	N/A	See MCCO Final Line Walk (Support) Package 2MS-02	

BENJAMIN F. SHA COMPANY

SHOP TRAVELER

193617

IVIMS 2 1117

WELDING, WELDING & NONDESTRUCTIVE TESTING RECORD
INFORMATION MUST BE RECORDED IF () IS MARKED (X)

END NO. DETAIL NO.	Welding	Inspector	Date	Weld No.	Welding	Inspector	Date	Weld No.	Welding	Inspector	Date	Weld No.	Welding	Inspector	Date	Weld No.	Welding	Inspector	Date	
1) Build Up () Filler Inside () Heat No.																				
1) Req'd "C" Dimen Plus																				
1) Actual "C" Dimen Minus																				
1) Req'd M.W. Actual M.W.																				
LL Machinist Date																				
LL Inspector Date																				
1) N-O-T * Date LL No.																				
1) (L) (L) (M) (I) (P) (T) LL No.																				
END NO. DETAIL NO.																				
1) Build Up () Filler Inside () Heat No.																				
1) Req'd "C" Dimen Plus																				
1) Actual "C" Dimen Minus																				
1) Req'd M.W. Actual M.W.																				
LL Machinist Date																				
LL Inspector Date																				
1) N-O-T * Date LL No.																				
1) (L) (L) (M) (I) (P) (T) LL No.																				
END NO. DETAIL NO.																				
1) Build Up () Filler Inside () Heat No.																				
1) Req'd "C" Dimen Plus																				
1) Actual "C" Dimen Minus																				
1) Req'd M.W. Actual M.W.																				
LL Machinist Date																				
LL Inspector Date																				
1) N-O-T * Date LL No.																				
1) (L) (L) (M) (I) (P) (T) LL No.																				
END NO. DETAIL NO.																				
1) Build Up () Filler Inside () Heat No.																				
1) Req'd "C" Dimen Plus																				
1) Actual "C" Dimen Minus																				
1) Req'd M.W. Actual M.W.																				
LL Machinist Date																				
LL Inspector Date																				
1) N-O-T * Date LL No.																				
1) (L) (L) (M) (I) (P) (T) LL No.																				
END NO. DETAIL NO.																				

11.477 4210

11.008 700

3.55 425

CSC 14/7/72

RECEIVED

REC'D BY
C. J. H. 12-17-72

4 12-18-72 SL 553167

67 12-17-72 47

12-17-72 G-T-A 085058

CSC 14/7/72

12-30-72

12-30-72

12-30-72

12-30-72

12-30-72

12-30-72

CSC 14/7/72

MCCO ID NO. 101
following PSI Welds

MTR 170
6101-1 IMS-2016-13
605020 IMS-2016-14
30 A RG-N-2 IMS-2016-15
081109 RC-N-7 IMS-2016-16

51303
05364R309
065058
90051069
90055050

Revised
by Caldwell A.I.E.
12-8-83

REC'D BY
C. J. H. 12-17-72

Fab. Mat. 2MSO48M-12:6

CHINING, WELDING & NONDESTRUCTIVE TESTING RECORD
INFORMATION MUST BE RECORDED IF () IS MARKED (X)

END NO. DETAIL NO.									
Bulk Up () Filter									
Regr'd C-Dimen Plus									
Actual "C" Dimen Minus									
Regr'd M.W. Actual M.W.									
Machinist Date									
Inspector Date									
Welding Date									
END NO. DETAIL NO.									
Bulk Up () Filter									
Regr'd C-Dimen Plus									
Actual "C" Dimen Minus									
Regr'd M.W. Actual M.W.									
Machinist Date									
Inspector Date									
Welding Date									
END NO. DETAIL NO.									
Bulk Up () Filter									
Regr'd C-Dimen Plus									
Actual "C" Dimen Minus									
Regr'd M.W. Actual M.W.									
Machinist Date									
Inspector Date									
Welding Date									

* MCGO ID No. for the following PST Welds

IMS 2014-30
IMS 2014-31
IMS 2014-32
IMS 2014-33

Abundant
12-8-83

Permitted
by Caldwell A-117
5-7-84

PST Ref No 2MS-99

11.006
11.999
400
1-19
12.605
1-19

56-15318

A-2-1-17-32
C-2-1112-2
C-2-1117-7

1-18
5-18

1-18
5-18

1-18
5-18

2-8-77
2-8-77

GENERAL  ELECTRIC

Vol 16 section B.7

APPARATUS AND ENGINEERING SERVICES • CENTRAL NUCLEAR PLANT SERVICES
GENERAL ELECTRIC COMPANY • 8157 SOUTH CASS AVENUE • DARIEN, ILLINOIS 60559 • (312) 789-5900

May 1, 1984
DLB/84-82

bcc: J. Nash
R. Hooper
N. Casey
Site Correspondence w/copy
ISI Job Folder w/attachment

Mr. Tom E. Watts 35 FNW
Commonwealth Edison Company
Station Nuclear Engineering
1 First National Plaza
P O Box 767
Chicago, Illinois 60690

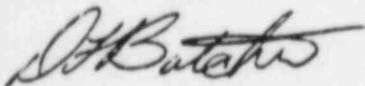
SUBJECT: LaSalle Unit 2 PSI Report Update 28-84)

Dear Mr. Watts:

Enclosed are five (5) sets of the subject update. Please update your sets by removing and destroying pages indicated and/or insert pages indicated on the attached sheets.

Please contact me if you have any questions.

Sincerely yours,



D. L. Butcher
Service Manager - Illinois District
Central Nuclear Plant Services

DLB/pa

enclosures

cc: W. Vahle, LaSalle (w/attachment & copy)
R. F. Janecek, 35FNW
D. A. Zoloty, LaSalle
G. R. Crane, 35FNW (w/attachment)

VOLUME 3 - SECTION 4.2

Remove

Insert

Tab 4.2

4.2 Personnel Qualification
Procedure Index

Corrected 4.2 Personnel Qualification
Procedure Index March 1, 1984

VOLUME 5, - SECTION 8.1

Remove

Insert

Tab 8.1

N/A

Component Figuration Abbreviations
List for LSCS ISI

VOLUME 5, - SECTION 8.4

Remove

Insert

Tab 1

Preservice Inspection Records Index
page 8.4.1 - 1 of 1 Rev. 0

Updated Preservice Inspection Records
Index page 8.4.1 - 1 of 1 Rev. 1

VOLUME 5, - SECTION 8.5

Remove

Insert

Tab 10

Preservice Inspection Records Index
pages 8.5.10 - 1 thru 18

Updated Preservice Inspection Records
Index pages 8.5.10 - 1 thru 18

Tab 16

Preservice Inspection Records Index
pages 8.5.16 - 1 thru 28

Updated Preservice Inspection Records
Index pages 8.5.16 - 1 thru 28

VOLUME 5, - SECTION 10.2

Remove

Insert

Tab 16

Tab Index Sheet

Updated Tab Index Sheet

VOLUME 5, - SECTION 10.2 cont'd

Remove

Insert

Tab 17

Tab Index Sheet

Updated Tab Index Sheet

VOLUME 5, - SECTION 10.3

Remove

Insert

Tab 1

Tab Index Sheet
ISI Drawing GEL-2049

Updated Tab Index Sheet
Updated ISI Drawing GEL-2049

Tab 2

Tab Index Sheet
ISI Drawing GEL-2050

Updated Tab Index Sheet
Updated ISI Drawing GEL-2050

Tab 3

Tab Index Sheet
ISI Drawing GEL-1108

Updated Tab Index Sheet
Update ISI Drawing GEL-1108

Tab 4

Tab Index Sheet
ISI Drawing GEL-1108

Updated Tab Index Sheet
Updated ISI Drawing GEL-1108

Tab 5

Tab Index Sheet
ISI Drawing GEL-1108

Updated Tab Index Sheet
Updated ISI Drawing GEL-1108

Tab 6

Tab Index Sheet

Updated Tab Index Sheet

VOLUME 5, - SECTION 10.4

	<u>Remove</u>	<u>Insert</u>
<u>Tab 8</u>	N/A	Tab Index Sheet
<u>Tab 9</u>	N/A	Tab Index Sheet
<u>Tab 10</u>	N/A	Tab Index Sheet
<u>Tab 11</u>	N/A	Tab Index Sheet
<u>Tab 12</u>	N/A IHP-2010 Rev. 1 page 1	Tab Index Sheet Signed IHP-2010 Rev. 1 page 1
<u>Tab 13</u>	N/A	Tab Index Sheet
<u>Tab 14</u>	N/A	Tab Index Sheet
<u>Tab 15</u>	N/A	Tab Index Sheet
<u>Tab 16</u>	N/A	Tab Index Sheet
<u>Tab 17</u>	N/A	Tab Index Sheet
<u>Tab 18</u>	N/A	Tab Index Sheet
<u>Tab 19</u>	N/A	Tab Index Sheet

VOLUME 5, - SECTION 10.4 cont'd

<u>Remove</u>	<u>Insert</u>
<u>Tab 20</u> N/A	Tab Index Sheet
<u>Tab 41</u> Tab Index Sheet	Updated Tab Index Sheet
<u>Tab 45</u> N/A	ISI Drawing IMS-2049
<u>Tab 51</u> Tab Index Sheet	Updated Tab Index Sheet

VOLUME 5, - SECTION 11.2

<u>Remove</u>	<u>Insert</u>
<u>Tab 11.2</u> NCR Log Unit II pages 1 and 2	Updated NCR Log Unit II pages 1 and 2 April 17, 1984

VOLUME 14, - SECTION 12.2

<u>Remove</u>	<u>Insert</u>
<u>Tab 19</u> E.D.S. No. 25108	Signed P.T. E.D.S. No. 25108

VOLUME 16, - SECTION 13.7

<u>Remove</u>	<u>Insert</u>
<u>Tab 3</u> N/A	1978 Correspondence (19 pages)
<u>Tab 4</u> N/A	1979 Correspondence (9 pages)

VOLUME 16, - SECTION 13.7 cont'd

Tab 5

N/A

1980 Correspondence (6 pages)

Tab 6

N/A

1981 Correspondence (2 pages)

Tab 7

N/A

1982 Correspondence (6 pages)

Tab 8

N/A

1983 Correspondence (10 pages)

Tab 9

N/A

1984 Correspondence (59 pages)

13.8 LISTING

Internal Audits

Tab 1	May 1984 (QA Records for Unit #2)	3 Pages
Tab 2	February 1984 (QA Records for Unit #1)	3 Pages
Tab 3	July 1983	11 Pages
Tab 4	February 1982	10 Pages
Tab 5	August 1981	6 Pages
Tab 6	May 1980	31 Pages
Tab 7	January 1980	44 Pages
Tab 8	April 1979	5 Pages
Tab 9	September 1978	4 Pages

GENERAL  ELECTRIC

**CENTRAL SERVICE
DEPARTMENT
APPARATUS & ENGINEERING
SERVICES**

DIAL COMM

8*383-5929
MAIL ADDRESS & DATE

2311 W. 22nd St., Suite 300
Oak Brook, IL 60521
May 10, 1984

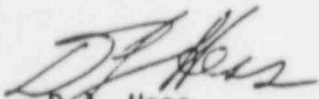
COPIES

SUBJECT

AUDIT REPORT ON ISI QA RECORDS
FOR UNIT #2 LASALLE STATION

TO: R.A. Pearson K.K. Cherian
 T.A. Mikulski J.E. Nash
 R.V. Georgiou

An audit was performed on the above subject by W. Kozik and S. Razi on May 9,10, 1984. A copy of the Audit Report is attached.


D.J. Hess
Manager QA Programs

DH:hc

Audit Number LA ISI 5/9/84

Pre-Audit Meeting

May 9, 1984 with K.K. Cherian, QA Supervisor
B. Dummer, Project Supervisor

Audit Location & Date

LaSalle Station Unit #2 - 5/9-10/ 84

Audit Scope

Audit of Unit #2 - QA Records, Section 17,
QA Manual

Personnel Contacted
During Audit

K.K. Cherian and
B. Dummer

Lead Auditor

W. Kozik *William Kozik 07/11/84*
Assistant Auditor, S. Razi

Exit Meeting

Held on May 10, 1984 with K.K. Cherian,
S. Razi and W. Kozik

Audit Plan Check List

Section 17.5 - Official Record Package

1) Is there a DCL issued for this record package?

Yes. Changed the name to Table of Contents.

2) Do the records have a Classification Identification?

Yes. So stated in the Table of Contents also sub-groups are indicated.

3) Are the records filed per Table of Contents and Classification?

Yes. Filed in 16 Volumes, spot checked records for filing in the 16 volumes. Records and files per Table of Contents.

4) Is each record identified by a unique number?

Yes. Spot checked the 16 volumes. Each record is identified.

Summary of Audit

Finding 1. Some omissions of information were noted during the Audit. These were corrected during the Audit.

Finding 2. Record copies could be of better quality. No action required at this time.

GENERAL  ELECTRIC

CENTRAL SERVICE
DEPARTMENT
APPARATUS & ENGINEERING
SERVICES

DIAL COMM
8*383-5929

MAIL ADDRESS & DATE
2311 W. 22nd St., Suite 300
Oak Brook, IL 60521
March 2, 1984

COPIES

SUBJECT

AUDIT REPORTS ON ISI QA RECORDS
FOR UNIT #1 LASALLE STATION

TO: R. PEARSON K. CHERIAN
 T. MIKULSKI J. NASH
 R. GEORGIU S. RAZI
 D. HESS B. DUMMER

An Audit was performed on the above project by W. Kozik on
February 23 & 24, 1984. A copy of the Audit Report is attached.

W. Kozik

W. Kozik
Central Service Department

WK:hc
Attachment

Page 2
Audit/FDI
March 2, 1984

Audit Number LA-ISI 2-24-84

Pre-Audit Meeting: February 23, 1984 with K.K. Cherian, QA Supervisor
B. Dummer, Project Manager

Audit Location
and Date: LaSalle Station - Unit #1 - 2/23-24/84

Audit Scope: Audit of Unit #1 - Quality Assurance Records
Section 17, QA Manual.

Personnel Contacted
During Audit: K.K. Cherian
S. Razi
M. Patch
B. Dummer

Lead Auditor: W. Kozik *W. Kozik 3/2/84*
Assistant Auditor - S. Razi

Exit Meeting: Held on February 24, 1984 with
K.K. Cherian, S. Razi, M. Patch,
B. Dummer

Audit Plan - Check List

Section 17.5 - Official Record Package

1) Is there a DCL issued for this Record Package?

Yes. Change the name to Table of Contents.

2) Do the records have Classification Identification.

Yes. So stated on the Table of Contents also sub-groups are indicated.

3) Are the records filed per Table of Contents and Classification Number?

Yes. Filed in 14 volumes, spot checked record for filing in the 14 volumes. Records are filed per Table of Contents.

4) Is each record identified by a unique number?

Yes. Spot checked the 14 volumes, each record checked had a unique number recorded on the record.

Summary of Audit

Finding #1 - When checking the binder for "UT Calibration Standards Report" it was noted that when transferring identification numbers they were not transferred correctly. K.K. Cherian is to recheck the records in this binder for these types of errors. Corrected during the Audit.

Finding #2 - When checking EDS (Data Report) and associated CDS, some omissions of information were noted on the data sheets. These were corrected during the Audit.

LaSalle
Attachment
PSI REPORT (2) UPDATE (30-84)

Unit 2
Z6(84-30)

Volume 5 - Section 10.3

	<u>Remove</u>	<u>Insert</u>
<u>Tab 7</u>	IC No. IRR-PU2A Rev. 0	Corrected IRR-PU2A Rev. 0

Volume 15 - Section 10.6

	<u>Remove</u>	<u>Insert</u>
<u>Tab 10.6</u>	Index 10.6 Hanger & Support	Revised Index 10.6 Hanger & Support

Volume 15 - Section 10.6

	<u>Remove</u>	<u>Insert</u>
<u>Tab 7</u>	IC No. 2PC01AC-24" IC No. 2PC01AD-24" IC No. 2PC01AB-24" IC No. 2PC01AA-24"	Corrected IC No. 2PC01AC-24" Corrected IC No. 2PC01AD-24" Corrected IC No. 2PC01AB-24" Corrected IC No. 2PC01AA-24"

Volume 15 - Section 10.6

	<u>Remove</u>	<u>Insert</u>
<u>Tab 8</u>	IC No. 2LA-017 RD page 6 of 6	Corrected IC No. 2LA-017 RD page 6 of 6

Volume 16 - Section 13.7

	<u>Remove</u>	<u>Insert</u>
<u>Tab 9</u>	N/A N/A N/A N/A	1984 Correspondences 1 page 1984 Correspondences 1 page 1984 Correspondences 3 pages 1984 Correspondences 1 page

INSPECTION CHECKLIST

LASALLE COUNTY STATION UNIT 2

IC NO. IRR-PU2A REV. 0

PAGE 1 of 1

REVIEWED AND APPROVED BY:

Q.C. SUPERVISOR RJ Healy DATE 1/17/81

SIZE	EXAM COMP ID NO	DWG. REV. NO.	ASME CAT	COMP FIG	PROCEDURE NO.	REV. NO.	EXAM TYPE	EDS NO.	CDS NO.	LSCS CAL STD. NO.	LDS NO.	Q.C. REVIEW SIGNATURE/DATE	AI INIT/DATE
00	01	02	03	04	05	06	07	08	09	10	11	12	13
24"	2833-C001A.	NA	B-L-2	Pump Casing	NA	NA	VT 290ST PT 3-4-81	290ST 27/63	NA	NA	NA	Sec PSI Ref. No. 2-RRP-1	w. J. C. 3.7.81
3/4" (16)	IRR-PU2A (Bolts 1-16)	NA	B-G-2	PB	4 12	2 1	VT UT-00	27/63	NA	NA	NA	<i>[Signature]</i> 2-17-81	w. J. C. 2-20-81

10.6 HANGER & SUPPORT

Description

DG - Diesel Generator Cooling Water System
FC - Fuel Pool Cooling System
FW - Feedwater System
HP - High Pressure Core Spray System
LP - Low Pressure Core Spray System
MS - Main Steam System
PC - Primary Containment Vent & Purge System
RD - Control Rod Drive System
RI - Reactor Core Isolation Cooling System
RR - Reactor Recirculation System
VP - Primary Containment Chilled Water System
VQ - Primary Containment Vent and Purge System
WR - Reactor Building Closed Cooling Water System
NB - Nuclear Boiling System
RH - Residual Heat Removal System
VG - Standby Gas Treatment System
HG - Containment Combustible Gas System
RT - Reactor Water Clean-Up System

INSPECTION CHECKLIST
 LASALLE COUNTY STATION UNIT 2

2PC01AC-24"
 IC NO. 2PC-EXEMPT

Page 1 of 1 Rev. 0

REVIEWED AND APPROVED BY:

Q.C. SUPERVISOR Ch... DATE 2-21-

00	01	02	03	04	05	06	07	08	09	10	11	12	13
SIZE	EXAM COMP ID NO	DWG. REV. NO.	ASME CAT	COMP FIG	PROCEDURE No.	REV. NO.	EXAM TYPE	EDS NO.	CDS NO.	LSCS CAL STD. NO.	LDS NO.	Q.C. REVIEW SIGNATURE/DATE	AT INIT/DATE
N/A	WPC-34B-C-D-E (PC01-2807V)		C-E-1 N/A	ATT	N/A	N/A	VT		N/A	N/A	N/A	See PSI Ref. No. 2PC-5 Page 4 ✓	w J Caldwell 2-27-84
N/A	PC01-2807V		C-E-2 N/A	SUP	N/A	N/A	VT		N/A	N/A	N/A	See MCCO Final Line Walk (Support) Package 2PC-03	
N/A	PC01-2808S		C-E-2 N/A	SUP	N/A	N/A	VT		N/A	N/A	N/A	See MCCO Final Line Walk (Support) Package 2PC-03	
N/A	PC01-2809S		C-E-2 N/A	SUP	N/A	N/A	VT		N/A	N/A	N/A	See MCCO Final Line Walk (Support) Package 2PC-03	
N/A	PC01-2810X		C-E-2 N/A	SUP	N/A	N/A	VT		N/A	N/A	N/A	See MCCO Final Line Walk (Support) Package 2PC-03	
N/A	WPC-33C-D-E-F (PC01-2810X)		C-E-1 N/A	ATT	N/A	N/A	VT		N/A	N/A	N/A	See PSI Ref. No. 2PC-5 Page 2 ✓	w J C 2-27-84
N/A	WPC-33G-H-J-K (PC01-2810X)		C-E-1 N/A	ATT	N/A	N/A	VT		N/A	N/A	N/A	See PSI Ref. No. 2PC-5 Page 3 ✓	w J C 2-27-84
			C-E-1 N/A										

INSPECTION CHECKLIST

LASALLE COUNTY STATION UNIT 2

2PC01AD-24"

IC NO. 2PC-EXEMPT

Page 1 of 1 Rev. 0

REVIEWED AND APPROVED BY:

Q.C. SUPERVISOR Cherry DATE 2-21

SIZE	EXAM COMP ID NO	DWG. REV. NO.	ASME CAT	COMP FIG	PROCEDURE No.	REV. NO.	EXAM TYPE	EDS NO.	CDS NO.	LSCS CAL STD. NO.	LDS NO.	Q.C. REVIEW SIGNATURE/DATE	AT INIT/DATE
00	01	02	03	04	05	06	07	08	09	10	11	12	13
N/A	WPC-38N-P-Q-R (PC01-2811V)		C-E-1 N/A	ATT	N/A	N/A	VT		N/A	N/A	N/A	See PSI Ref. No. 2PC-1 Page 6	w J Calder 2-24-84
N/A	PC01-2811V		C-E-2 N/A	SUP	N/A	N/A	VT		N/A	N/A	N/A	See MCCO Final Line Walk (Support) Package 2PC-04	
N/A	WPC-38U (PC01-2814S)		C-E-1 N/A	ATT	N/A	N/A	VT		N/A	N/A	N/A	See PSI Ref. No. 2PC-1 Page 3	w Jc 2-24-84
N/A	PC01-2814S		C-E-2 N/A	SUP	N/A	N/A	VT		N/A	N/A	N/A	See MCCO Final Line Walk (Support) Package 2PC-04	
N/A	WPC-38V (PC01-2815S)		C-E-1 N/A	ATT	N/A	N/A	VT		N/A	N/A	N/A	See PSI Ref. No. 2PC-1 Page 2	w Jc 2-24-84
N/A	PC01-2815S		C-E-2 N/A	SUP	N/A	N/A	VT		N/A	N/A	N/A	See MCCO Final Line Walk (Support) Package 2PC-04	
N/A	WPC-38E-F-G-H (PC01-2816X)		C-E-1 N/A	ATT	N/A	N/A	VT		N/A	N/A	N/A	See PSI Ref. No. 2PC-1 Page 4	w Jc 2-24-84
N/A	WPC-38J-K-L-M (PC01-2816X)		C-E-1 N/A	ATT	N/A	N/A	VT		N/A	N/A	N/A	See PSI Ref. No. 2PC-1 Page 5	w Jc 2-24-84
N/A	PC01-2816X		C-E-2 N/A	SUP	N/A	N/A	VT		N/A	N/A	N/A	See MCCO Final Line Walk (Support) Package 2PC-04	

Cherry
5-15-84

INSPECTION CHECKLIST

LASALLE COUNTY STATION UNIT 2

IC NO. 2PC01AB-24"
2PC-EXEMPT

Page 1 of 1 Rev. 0

REVIEWED AND APPROVED BY:

Q.C. SUPERVISOR *[Signature]* DATE 2-21-

SIZE	EXAM COMP ID NO	DWG. REV. NO.	ASME CAT	COMP FIG	PROCEDURE No.	REV. NO.	EXAM TYPE	EDS NO.	CDS NO.	LSCS CAL STD. NO.	LDS NO.	Q.C. REVIEW SIGNATURE/DATE	AI INIT/DATE
00	01	02	03	04	05	06	07	08	09	10	11	12	13
N/A	PC01-2805X		C-E-2 N/A	SUP	N/A	N/A	VT		N/A	N/A	N/A	See MCCO Final Line Walk (Support) Package 2PC-02	
N/A	PC01-2806X		C-E-2 N/A	SUP	N/A	N/A	VT		N/A	N/A	N/A	See MCCO Final Line Walk (Support) Package 2PC-02	
N/A	WPC-298 (PC01-2806X)		C-E-1 N/A	ATT	N/A	N/A	VT		N/A	N/A	N/A	See PSI Ref. No. 2PC-2 Page 2 ✓	<i>u J Calhoun</i> 2-24-84
			<i>OK</i> <i>5-15-80</i>										

INSPECTION CHECKLIST

LASALLE COUNTY STATION UNIT 2

IC NO. 2PC01AA-24"
2PC-EXEMPT

Page 1 of 1 Rev. 0

REVIEWED AND APPROVED BY

Q.C. SUPERVISOR *Ch...* DATE 2-21-

00	01	02	03	04	05	06	07	08	09	10	11	12	13
SIZE	EXAM COMP ID NO	DWG. REV. NO.	ASME CAT	COMP FIG	PROCEDURE No.	REV. NO.	EXAM TYPE	EDS NO.	CDS NO.	LSCS CAL STD. NO.	LDS NO.	Q.C. REVIEW SIGNATURE/DATE	AI INIT/DATE
N/A	WPC-24G-H (PC01-2401X)		C-E-1 N/A	ATT	N/A	N/A	VT		N/A	N/A	N/A	See PSI Ref. No. 2PC-4 Page 2	<i>w J Calhoun</i> 2-24-80
N/A	PC01-2401X		C-E-2 N/A	SUP	N/A	N/A	VT		N/A	N/A	N/A	See MCCO Final Line Walk (Support) Package 2PC-01	
N/A	PC01-2801S		C-E-2 N/A	SUP	N/A	N/A	VT		N/A	N/A	N/A	See MCCO Final Line Walk (Support) Package 2PC-01	
N/A	PC01-2802S		C-E-2 N/A	SUP	N/A	N/A	VT		N/A	N/A	N/A	See MCCO Final Line Walk (Support) Package 2PC-01	
N/A	PC01-2817S		C-E-2 N/A	SUP	N/A	N/A	VT		N/A	N/A	N/A	See MCCO Final Line Walk (Support) Package 2PC-01	
			<i>CL</i> <i>5-15-80</i>										

INSPECTION CHECKLIST

LASALLE COUNTY STATION UNIT 2

IC NO. 2LA-017 RD System

Page 6 of 6 Rev. 0

REVIEWED AND APPROVED BY

Q.C. SUPERVISOR Chen DATE 2-24

SIZE	EXAM COMP ID NO	DWG. REV. NO.	ASME CAT	COMP FIG	PROCEDURE No.	REV. NO.	EXAM TYPE	EDS NO.	CDS NO.	LSCS CAL STD. NO.	LDS NO.	Q.C. REVIEW SIGNATURE/DATE	AI INIT/DATE
00	01	02	03	04	05	06	07	08	09	10	11	12	13
N/A	2LA-017-63		C-E-2	SUP	N/A	N/A	VT		N/A	N/A	N/A	See RCI Records Component Supports Book #18 Unit #2	
N/A	Scram Volumn Tank 2 RD22 BA-12"		C-E-2	SUP	N/A	N/A	VT		N/A	N/A	N/A	See RCI Records Component Supports Book #18 Unit #2	
N/A	Scram Volumn Tank 2 RD22 BB-12"		C-E-2	SUP	N/A	N/A	VT		N/A	N/A	N/A	See RCI Records Component Supports Book #18 Unit #2	
N/A	(8)Lugs Scram Volumn Tank 2 RD22 BA-12"		C-E-1	ATT SUP	N/A	N/A	PT		N/A	N/A	N/A	See RCI Records Component Supports Book #18 Unit #2	
N/A	(8)Lugs Scram Volumn Tank 2 RD22 BB-12"		C-E-1	ATT SUP	N/A	N/A	PT		N/A	N/A	N/A	See RCI Records Component Supports Book #18 Unit #2	

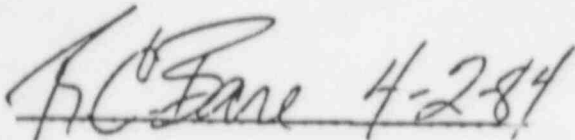
April 2, 1984

Mr. K.K. Cherian
General Electric Company
La Salle County Station

Subject: PSI-Documentation Turnover Unit #1 - La Salle County Station

This is to state that I have performed an audit on the subject PSI turnover documentation packages during the last week of March 1984 and found no discrepancies.

I acknowledge the receipt of Volumes #1 through #14.



R.C. Bare
CECo Construction-Q.A.

cc: W. Vahle - CECo
D.J. Skoza - CECo
D.L. Butcher - G.E.
M. Patch - G.E.

GENERAL  ELECTRIC

APPARATUS AND ENGINEERING SERVICES • CENTRAL NUCLEAR PLANT SERVICES
GENERAL ELECTRIC COMPANY • P.O. BOX 969 • MONTICELLO, MINNESOTA 55362 • (612) 295-5781

March 5, 1984

TO: K.K. Cherian, Level III
G.E. PSI Group
Lasalle County Station
P.O. Box 930
Senica, IL 61360

FROM: J.E. Olin, Level II VT-1
Assistant Project Manager
Monticello, MN 55362

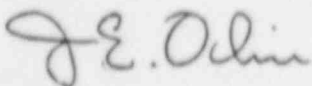
SUBJECT: Visual Inspections

All inspections made by myself at Lasalle were noted on the Visual Inspection Reports. If the oversight in completing surface condition can be corrected without reinspection I enclose the following statement.

All surface conditions of components inspected by myself were acceptable, clean, dry and free from reportable defects. Reference Sec. 11, 75 and 80 addenda. J.E. Olin, Level II VT-1.

Any questions or problems, please call (612)295-5779.

Sincerely,



J.E. Olin
Assistant Project Manager
Monticello RPRP

JEO:d1c

GENERAL  ELECTRIC

APPARATUS AND ENGINEERING SERVICES • CENTRAL NUCLEAR PLANT SERVICES
GENERAL ELECTRIC COMPANY • 8157 SOUTH CASS AVENUE • DARIEN, ILLINOIS 60559 • (312) 789-5900

May 18, 1984

Mr. Tom Quaka
Commonwealth Edison Company
LaSalle County Station

Subject: PSI-Report for Unit 11 (Set 001)

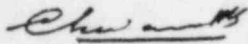
Reference: Transmittal #84-74 Dated 5-14-84
From D.L. Butcher to T.E. Watts

Dear Mr. Quaka:

In accordance with Commonwealth Edison Company Project Procedure #82-3, Rev. 1, Para. 4.3, a formal request for record turnover has been submitted through the referenced transmittal. All documents listed in the referenced transmittal have undergone numerous reviews for completeness and correctness and to the best of my knowledge, they are considered complete and acceptable.

A copy of the said transmittal letter is attached herewith for reference. If you have any questions or comments please contact me.

Sincerely,



K.K. Cherian
Site QC Supervisor

KKC:pds

cc: W. Vahle
D.J. Skoza

GENERAL ELECTRIC

APPARATUS AND ENGINEERING SERVICES • CENTRAL NUCLEAR PLANT SERVICES
GENERAL ELECTRIC COMPANY • 8157 SOUTH CASS AVENUE • DARIEN, ILLINOIS 60559 • (312) 789-5900

DLB/84-74

May 14, 1984

Mr. Tom E. Watts 35FNW
Commonwealth Edison Company
Station Nuclear Engineering
1 First National Plaza
P O Box 767
Chicago, Illinois 60690

SUBJECT: Request for Turnover of Unit 2
PSI Report (Set 001)

Dear Mr. Watts:

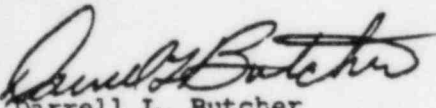
Volumes one (1) thru sixteen (16) of PreService Inspection Report have been assembled and are ready for review and turnover.

Per your Project Procedure 82-3 Rev. 1, paragraph 4.3, I am submitting this request for records turnover. The specific types of records are detailed on the attachment.

Site Construction Quality Assurance has been notified and is preparing attachments (per 82-3) A and B as agreed. Attachment C-2A has been modified and is being prepared by our PSI group for turnover.

If you have any questions or comments, please contact me.

Very truly yours,



Darrell L. Butcher
Service Manager - Illinois District
Central Nuclear Plant Services

cc: G. R. Crane, 35 FNW w/attachment
D. J. Skoza, LaSalle w/attachment
W. Vahle, LaSalle w/attachment

DLB/pa

bcc: N. Casey
K. Cherian
R. Hooper w/attachment
L. Nash
J. Nash
B. Dummer w/attachment
LaSalle County
ISI Job Folder w/att.

GENERAL ELECTRIC

ATTACHMENT SPECIFIC RECORD TYPES

Report Summary
NIS-1 Form
Personnel Certifications
Personnel Qualification Procedures
NDE Instrument Calibration
NDE Instrument Certification
UT Calibration Standards
Surface Thermometers
Glycerine Certification
Liquid Penetrant Certification
Receiving Inspection Reports
NDE Procedures
NDE Procedure Approvals
NDE Procedure Qualifications
Preservice Inspection Records Indexes
Relief Requests
Inspection Checklists
Bolting Detail Drawings
Reportable Indication List
Nonconformity Reports Log
Nonconformity Reports
NDE Examination Data Sheets
Contract
Purchase Orders
Document Checklist
Document Distribution List
Signature Log
Letters of Delegation
Correspondence
Audit Reports
Auto UT Raw Data
Auto UT Computer Tapes

May 18, 1984

Mr. K.K. Cherian
General Electric Co.
LaSalle County Station

Subject: PSI-Documentation Turnover Unit #II - LaSalle County Station

This is to state that I have performed an audit on the subject PSI turnover documentation packages during the third week of May 1984 and found no discrepancies.

I acknowledge the receipt of Volumes #1 through #16.

R.C. Bare 5-21-84

R.C. Bare
CECo Construction-Q.A.

cc: W. Vahle - CECO
D.J. Skoza - CECO
D.L. Butcher - G.E.
B. Dummer - G.E.