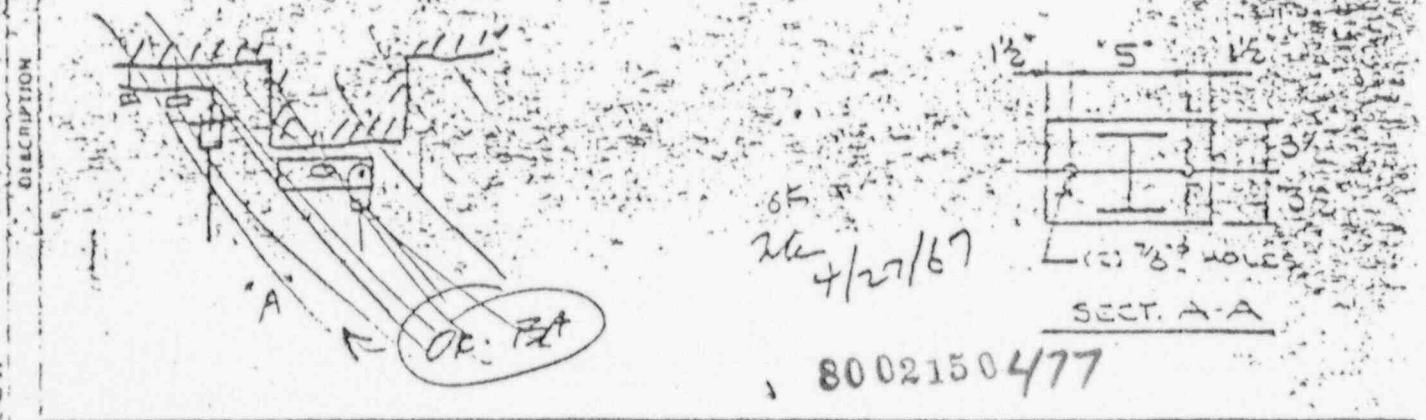
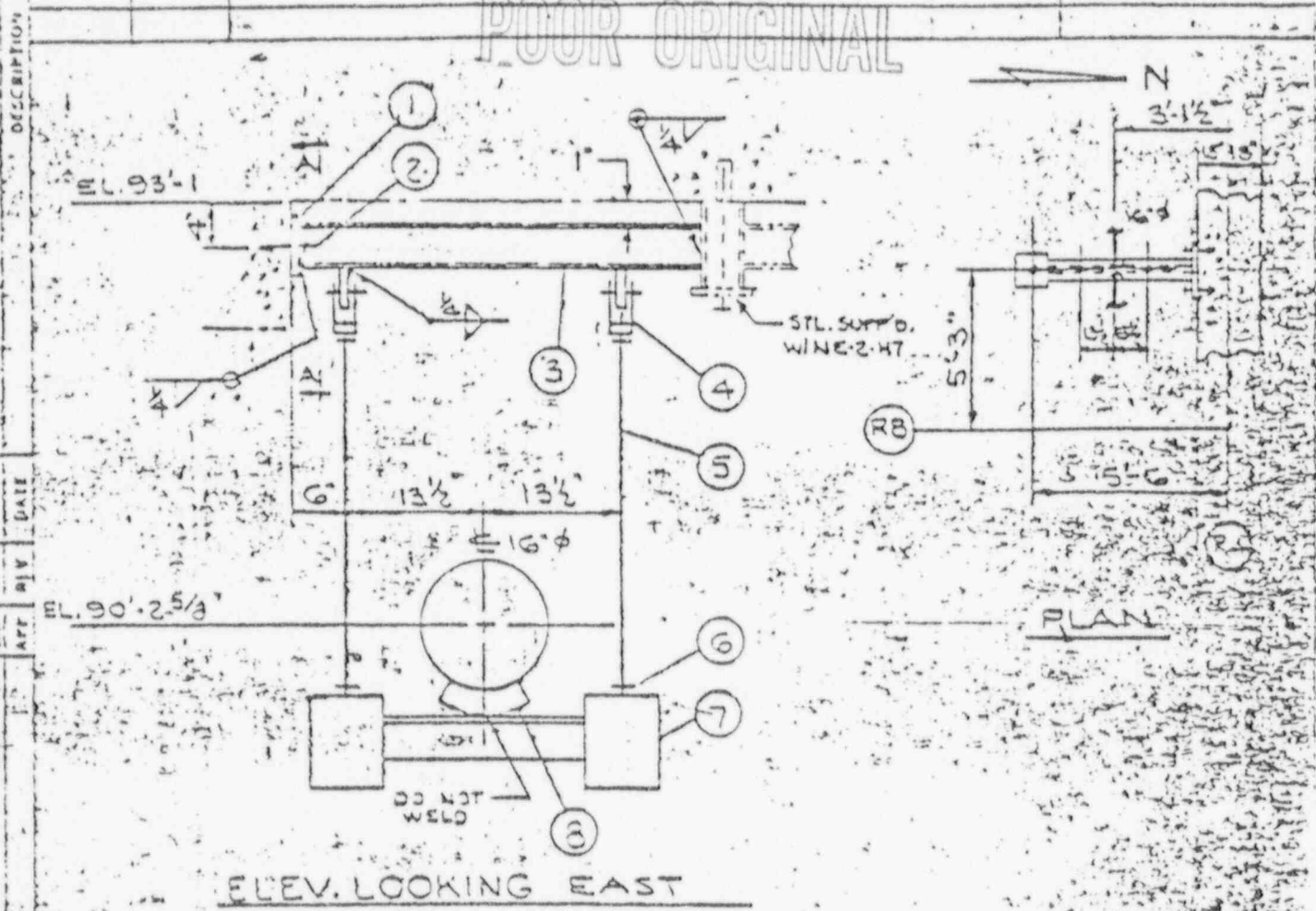


QTY	NO	DESCRIPTION	7/16" UN PART NO	REMARKS
1		7" x 1/2" x 8" R		
2		5-34 PHILLIPS R.H. W/ 3/4" φ x 1 3/4" LG. BOLT		
3		GB12 X 3-10" LG.		
1		PART 90	5	
1		1 1/2" φ ROD X 2-6" LG. TBE 9"		
1		1 1/8" φ H.N.		
1		V54G-14 H.L. 2850 F CL (3211) MVT. 1 1/2" UP		
1		16" φ P.S. PART 300 C	300C	

POOR ORIGINAL



BURNS & ROE INC., P. O. #SR-234-10  
 BURNS & ROE INC  
 OYSTER CREEK STA. UNIT #1

PIPING SYSTEM EMER. CONDENSER  
 REF LOCATION PLAN B & R DWG. 2148-G  
 MARK NO. NE-1-HG NO. 200