

VYNPS

6.0 ADMINISTRATIVE CONTROLS

Administrative controls are the written rules, orders, instructions, procedures, policies, practices, and the designation of authorities and responsibilities by the management to obtain assurance of safety and quality of operation and maintenance of a nuclear power reactor. These controls shall be adhered to.

6.1 ORGANIZATION

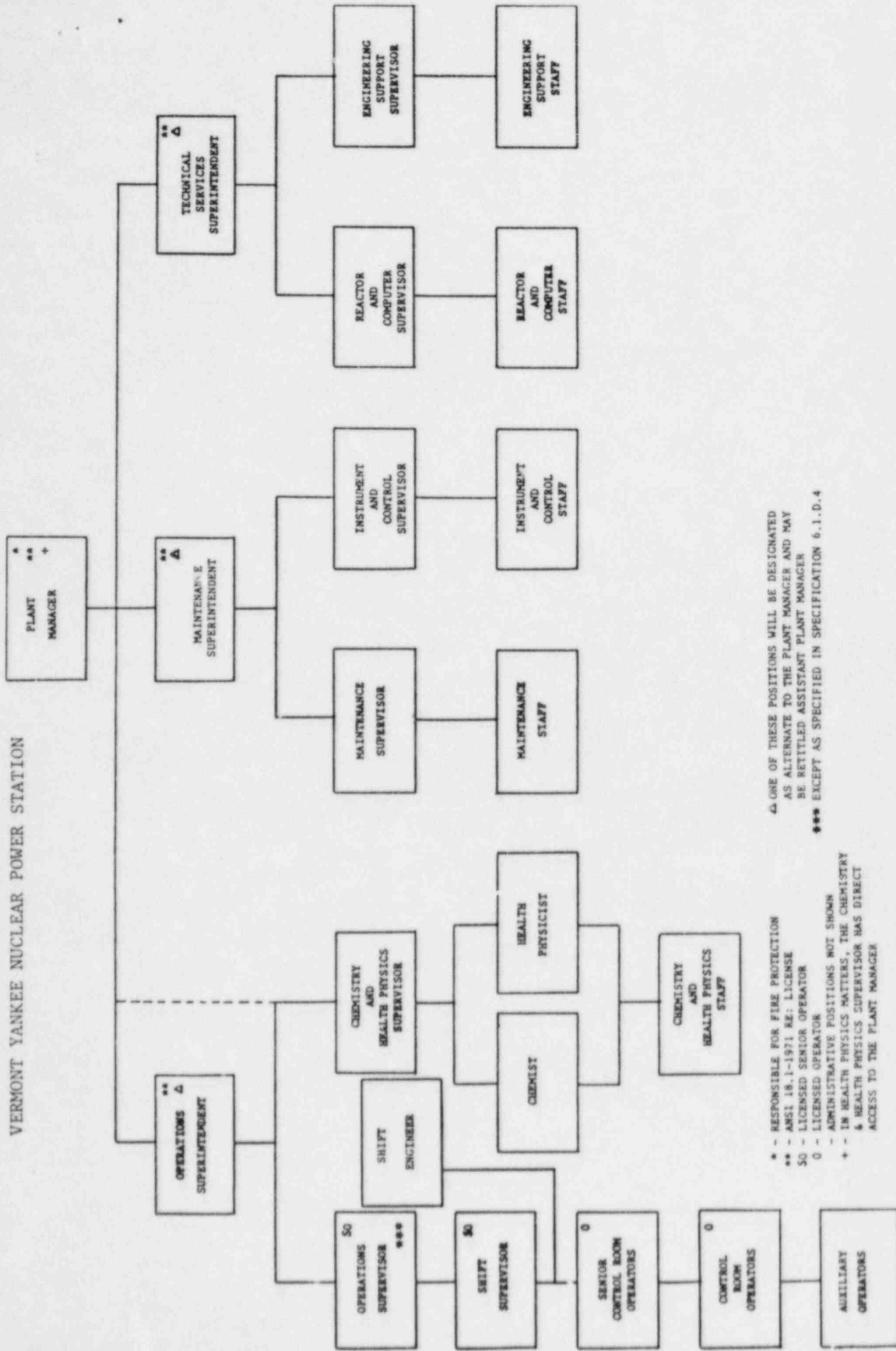
- A. The Plant Manager has on-site responsibility for the safety and efficient operation of the facility. Succession to this responsibility during his absence shall be delegated in writing.
- B. The portion of the corporate management which relates to the operation of this plant is shown in Figure 6.1.1.
- C. In all matters relating to the operation of the plant and to those Technical Specifications, the Plant Manager shall report to and be directly responsible to the Manager of Operations.
- D. Conduct of operations of the plant is shown in Figure 6.1.2 and will be in accordance with the following minimum conditions (see Table 6.1.1).
 - 1. A licensed Senior Operator and an individual qualified in radiation protection procedures shall be present on-site at all times when there is fuel in the reactor.
 - 2. Licensed Operators on-site shall be in accordance with Table 6.1.1, one of which must be in the Control Room at all times when fuel is in the reactor.
 - 3. A licensed Senior Operator shall be in charge of any refueling operation.
 - 4. Qualifications with regard to educational background experience, and technical specialities of the key supervisory personnel listed below shall apply and be maintained in accordance with the levels described in the American National Standards Institute N18.1-1971, "Selection and Training of Personnel for Nuclear Power Plants".
 - a. Plant Manager
 - b. Operations Superintendent
 - c. Technical Services Superintendent
 - d. Maintenance Superintendent
 - e. Chemistry and Health Physics Supervisor
 - f. Operations Supervisor (see Item D.7, Page 190a)
 - g. Reactor and Computer Supervisor
 - h. Maintenance Supervisor
 - i. Instrument and Control Supervisor
 - j. Shift Supervisors

VYNPS

5. The Plant Health Physicist shall meet or exceed the qualifications of Regulatory Guide 1.8, Revision 1 (September 1975).
 6. The Shift Technical Advisor shall have a bachelor's degree or equivalent in a scientific or engineering discipline with specific training in plant design, and response and analysis of the plant for transients and accidents.
 7. If the Operations Supervisor does not possess a Senior Operator License, then an Assistant Operations Supervisor shall be designated that does possess a Senior Operator License. All instructions to the shift crews involving licensed activities shall then be approved by the designated Assistant Operations Supervisor.
- E. A Fire Brigade of at least 5 members shall be maintained on-site at all times. # This excludes 2 members of the minimum shift crew necessary for safe shutdown of the plant and any personnel required for other essential functions during a fire emergency.

#Fire Brigade composition may be less than the minimum requirements for a period of time not to exceed 2 hours in order to accommodate unexpected absence of Fire Brigade members provided immediate action is taken to restore the Fire Brigade to within the minimum requirements.

VERMONT YANKEE NUCLEAR POWER STATION



- △ - RESPONSIBLE FOR FIRE PROTECTION
- ** - ANSI 18.1-1971 RE: LICENSE
- 50 - LICENSED SENIOR OPERATOR
- 0 - LICENSED OPERATOR
- ADMINISTRATIVE POSITIONS NOT SHOWN
- + - IN HEALTH PHYSICS MATTERS, THE CHEMISTRY & HEALTH PHYSICS SUPERVISOR HAS DIRECT ACCESS TO THE PLANT MANAGER
- △ ONE OF THESE POSITIONS WILL BE DESIGNATED AS ALTERNATE TO THE PLANT MANAGER AND MAY BE RETITLED ASSISTANT PLANT MANAGER
- *** EXCEPT AS SPECIFIED IN SPECIFICATION 6.1.D.4

Organizational Chart

VYNPS

TABLE 6.1.1

Vermont Yankee staff positions that shall be filled by personnel holding Senior Operator and Operator Licenses are indicated in the following table:

<u>Title</u>	<u>License</u>
Operations Supervisor	Senior Operator (Except as specified in Specification 6.1.D.4)
Shift Supervisor	Senior Operator
Supervisory Control Room Operator	Operator
Control Room Operator	Operator

<u>MINIMUM SHIFT CREW PERSONNEL & LICENSE REQUIREMENTS</u>	<u>Conditions</u>		
	<u>Normal Operation</u>	<u>Plant Startup</u>	<u>Cold Shutdown</u>
Shift Supervisor	(1)	(1)	-
Supervisory Control Room Operator	(1)	(1)	(1)
Control Room Operator	(1)	(1)	(1)
Auxiliary Operator	(2)	(2)	(1)
Shift Engineer	(1)	(1)	-
Senior Operators License	(1)	(1)	(1)
Operators License	(2)	(2)	(1)