

REGION IV

WOLF CREEK TASK FORCE

JULY 5, 1984

8502280374 841211
PDR FOIA
VARRICC84-747 PDR

#3

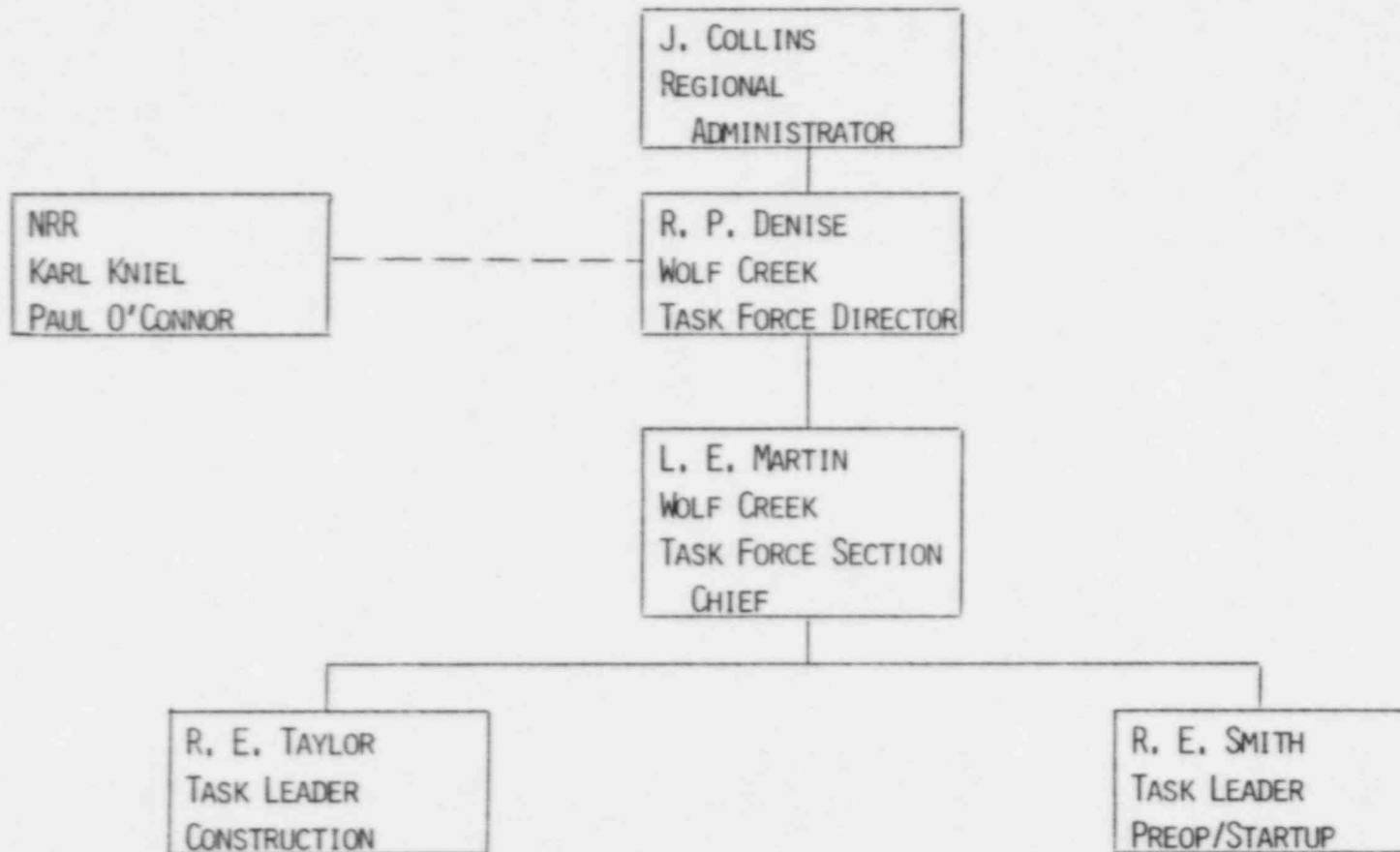
Jim 2

Release

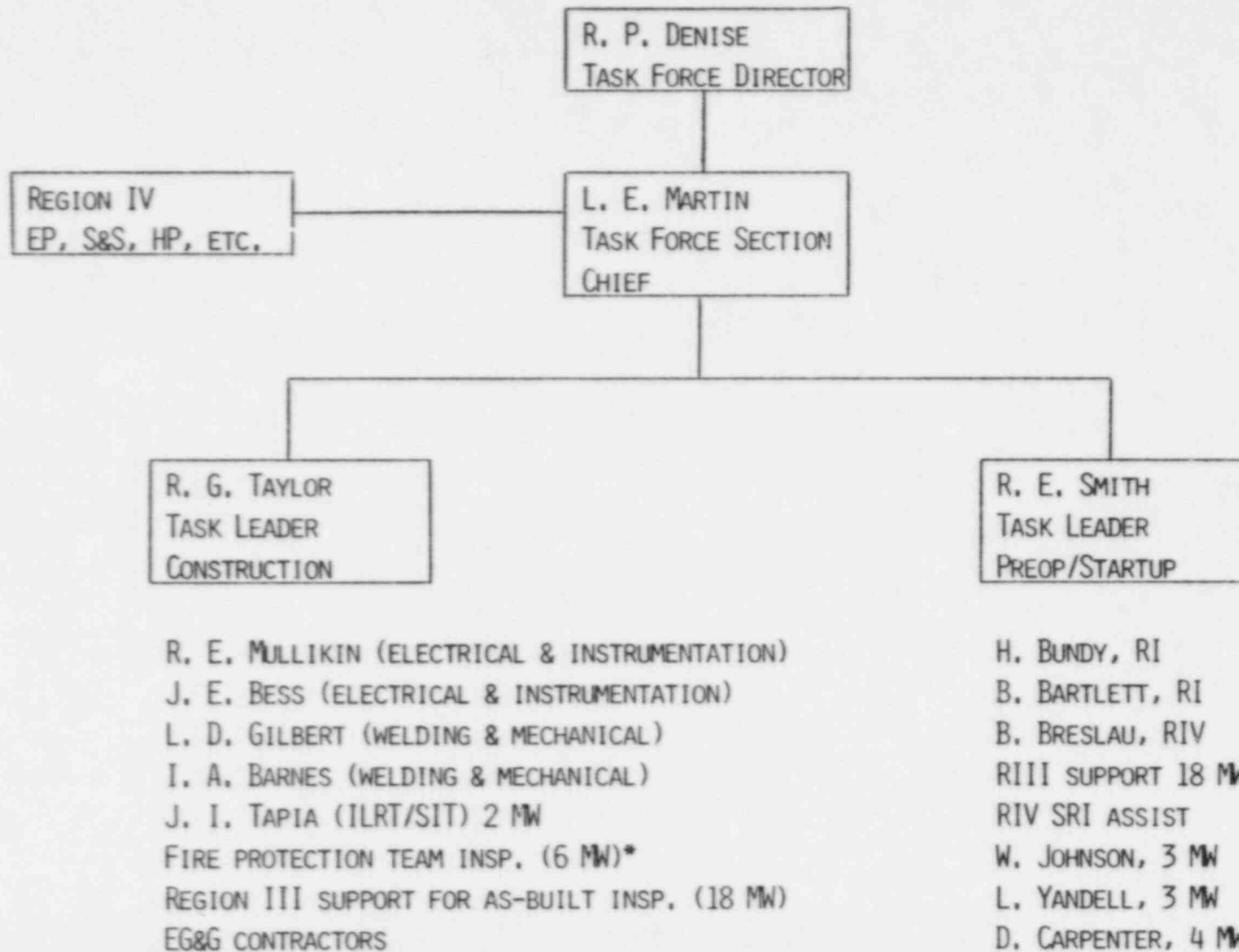
WOLF CREEK TASK FORCE

OBJECTIVE: To provide a dedicated, experienced team to complete the 2512, 2513, and 2514 inspection programs, including as-built verification, allegation followup, open item closeout, and SER input, to ensure the integration of schedule and execution of NRC activities on schedule.

ORGANIZATION MANAGEMENT



WOLF CREEK TASK FORCE



NOTE: OTHER SPECIALIST WILL BE ASSIGNED AS NEEDED TO MEET SPECIFIC REQUIREMENTS.

*THIS TEAM SHOULD BE THE SAME TEAM AS FOR CPSES AND WILL BE COORDINATED BY MURPHY AND MULLIKIN OF RIV

RIV ORGANIZATION
(LESS TASK FORCES)

W. SEIDLE, TECHNICAL ASSISTANT

P. S. CHECK
ACTING DIRECTOR,
DIVISION OF REACTOR
PROJECTS & SAFETY

REACTOR PROJECT
BRANCH 1
E. JOHNSON, CHIEF

REACTOR PROJECT
BRANCH 2
D. HUNTER, CHIEF

REACTOR PROJECT
SECTION A
J. JAUDON, CHIEF

ENGINEERING AND
SPECIAL PROJECTS
R. IRELAND, ACTING
CHIEF

OPERATOR LICENSING
GROUP

K. WHITTLESLEY
L. ELLERSHAW

R. COOLEY
J. PELLET
S. MCCRORY

R. BENNETT
W. MCNEILL
C. HARBUCK

P. WAGNER - FSV PM
D. POWERS - TECH REVIEWER
M. MURPHY - SALP (F.P.)
J. BOARDMAN - QA REVIEWER

ANO
W. JOHNSON, SRI-O
P. HARRELL, RI-O

STP
D. TOMLINSON, SRI-C
D. CARPENTER, RI-O

FSV
G. L. PLUMLEE, SRI-O

FCS
L. YANDELL, SRI-O

CNS
D. DUBOIS, SRI-O
RIVER BEND
D. CHAMBERLAIN, SRI-O
R. FARRELL, SRI-C

REGION IV NTOL TASK FORCE EFFORTS

WATERFORD

W. A. Crossman (SER)
G. L. Constable SRI
T. A. Flipppo RI
1 Operations Closeout) through
1 Construction Closeout) August 1984

COMANCHE PEAK

Inspection

Region IV Director - R. L. Bangart
Section Chief - D. M. Hunnicutt
C. R. Oberg
M. E. Skow
D. L. Kelley, SRI-OPS
J. E. Cummins, SRI-C
H. S. Phillips, SRI-C

TRT

NRR Director - T. Ippolito
Region IV Assignments
J. E. Gagliardo, Dep. Dir.
C. Hale - QA
A. R. Johnson - Electrical
J. I. Tapia - Civil/Structural
C. Johnson - Coatings
W. F. Smith - Test Program

WOLF CREEK

See other Charts

WOLF CREEK RESIDENT INSPECTOR HISTORY

<u>NAME</u>	<u>EOD DATE</u>	<u>SEPARATION DATE</u>	<u>REASON FOR LEAVING</u>
VANDEL, THOMAS E. (SRI-C)	11/29/81	02/20/83	RETURNED TO REGION III
ROBERDS, HAROLD W. (SRI-C)	12/26/82	10/28/83	RETIRED
SMITH, ALVA (SRI-C)	01/24/83	11/10/83	RETURNED TO PRIVATE INDUSTRY
SCHUM, SCOTT (SRI-O)	02/07/82	04/28/84	FORMED HIS OWN CONSULTANT BUSINESS
BUNDY, HAROLD F. (RI-O)	06/10/84		
BARTLETT, BRUCE (RI-O)	07/22/84		

PRESENT STATUS OF ROUTINE INSPECTION PROGRAM
FOR WOLF CREEK

<u>Inspection Activity</u>	<u>Average Inspection % Completed 5/1/84</u>	<u>Inspection Comment</u>	<u>RIV Status</u>
Construction Fire Protection	100		C
Site Preparation	100		C
Lakes, etc.	100		C
Foundations	100		C
Concrete	100		C
Post-Tensioning	100		C
Containment Steel	100		C
Noncontainment Steel	100		C
R. C. Pipe Installation (Note 1)	0	W.C.	C
S. R. Pipe Installation (Note 2)	70	W.C.	C
R. V. Installation	100		C
R. V. Internals	40	W.C.	C
S. R. Mech Comp Installation	82		C
Pipe Supports	80	S.W.	O
Elec Comp Installation	90	S.W.	O
Electrical Cables	90	S.W.	O
Instrument Installation	90	S.W.	O
Instrument Cables	90	S.W.	O
Containment Penetrations	40	W.C.	C
Cont Steel Weiding	100		C
Structural Welding	100		C
R. C. Pipe Welding	64	W.C.	C
S. R. Pipe Welding	100		C
Pre-Service Inspection	40	S.W.	O
Fuel Rack Installation	100		C
Internals Welding	60	W.C.	C

CODE

Inspection Comment

S.W. = Still Working
W.C. = Window Closed

Status

C = Closed/to be closed
O = Open - in progress

NOTES

1. Resident Insp. 93 hrs. 80% Comp.
2. Comb. RIV & RRI = 113 hrs. 75% Comp.

Comparison of Inspection Effort on 2512/2513 Technical Modules
Wolf Creek - Callaway

<u>Inspection Activity</u>	<u>Wolf Creek</u>		<u>Callaway</u>		<u>TOTALS</u>	
	<u>Region</u>	<u>RI</u>	<u>Region</u>	<u>RI</u>	<u>Wolf Creek Region</u>	<u>Callaway RI</u>
	as of 5/1/84		as of 6/7/84			
Construction Fire Protection	-	36	6	-	36	6
Site Preparation	55	-	20	-	55	20
Lakes, etc.	86	-	3	-	86	3
Foundations	78	-	19	-	78	19
Concrete	393	92	288	117	485	405
Post Tensioning	98	39	96	23	137	119
Containment Steel	91	7	53	41	98	94
Non-Containment Steel	96	27	74	57	123	131
R. C. Pipe Installation	-	93	57	77	93	134
S. R. Pipe Installation	67	117	96	113	184	209
R. V. Installation	48	32	44	69	80	113
R. V. Internals	31	32	39	54	64	93
S. R. Mech Comp Installation	96	56	68	125	152	193
Pipe Supports	158	63	131	112	227	243
Elec Comp Installation	65	68	182	109	133	291
Electrical Cables	235	100	457	195	335	652
Instrument Installation	43	65	183	44	108	227
Instrument Cables	115	3	202	95	118	297
Containment Penetrations	60	1	45	65	61	110
Cont Steel Welding	76	0	42	18	76	60
Structural Welding	270	7	74	62	277	136
R. C. Pipe Welding	295	20	84	86	315	170
S. R. Pipe Welding	356	27	63	122	383	185
Pre-Service Inspection	22	-	22	-	22	22
Fuel Rack Installation	30	-	7	-	30	7
Internals Welding	3	-	-	-	3	-
TOTAL	2,867	843	2,355	1,584		
GRAND TOTAL	3,710		3,939			
	93 m/w		98 m/w			

OVERVIEW OF TASK FORCE EFFORT

PREOP/STARTUP TASK GROUP

COMPLETE 2513 PROGRAM

START 2514 PROGRAM

2514 QA MODULES

CONSTRUCTION TASK GROUP

COMPLETE 2512 PROGRAM

ACTIVITIES APPLICABLE TO BOTH

THESE ACTIVITIES WILL BE HANDLED BY ONE TASK GROUP OR THE OTHER DEPENDING ON THE NATURE OF THE ITEM

- OPEN ITEM CLOSURE
- ALLEGATION FOLLOWUP (TECHNICAL)
- QUALITY ASSURANCE
- 50.55(E) CLOSEOUT
- INSPECTION FINDING CLOSEOUT (VIOLATIONS)
- IEB CLOSEOUT
- NUREG 0737 ITEM FOLLOWUP
- SER CONFIRMATORY FOLLOWUP

WOLF CREEK TASK FORCE SCHEDULE

' JUN ' JUL ' AUG ' SEP ' OCT ' NOV '

..... 2512 ROUTINE PROGRAM (CONSTRUCTION) |

| AS-BUILT VERIFICATION |

..... ALLEGATIONS FOLLOW UP | ..

| SIT |
| ILRT |

..... 2513 (PRE-OPS) |

| HOT FUNCTIONAL TEST |

MEETING ON WOLF CREEK PLANT

REGION III AND REGION IV

COOPERATIVE EFFORTS

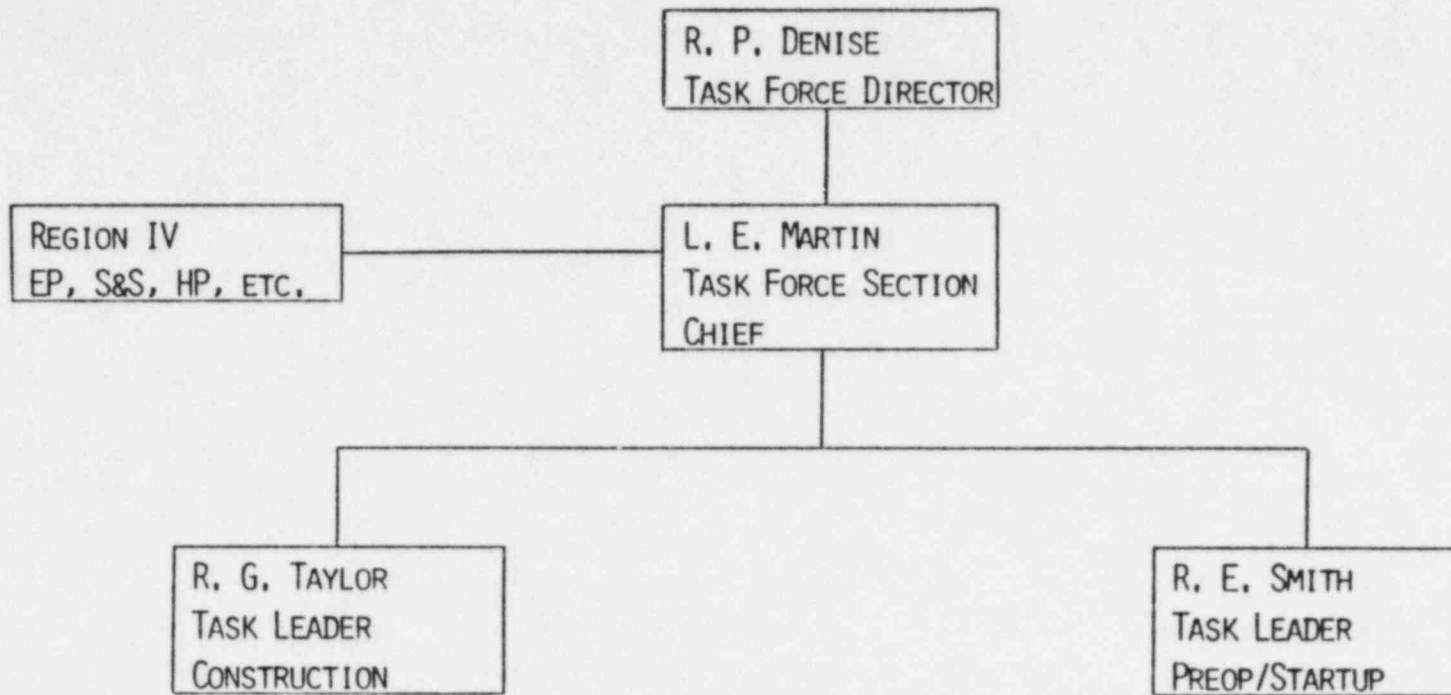
July 23, 1984
Arlington, Texas

84-747-Sub 11 2 Release

RIV

#4

WOLF CREEK TASK FORCE



R. E. MULLIKIN (ELECTRICAL & INSTRUMENTATION)
 J. E. BESS (ELECTRICAL & INSTRUMENTATION)
 L. D. GILBERT (WELDING & MECHANICAL)
 I. A. BARNES (WELDING & MECHANICAL)
 J. I. TAPIA (ILRT/SIT) 2 MW
 FIRE PROTECTION TEAM INSP. (6 MW)*
 REGION III SUPPORT FOR AS-BUILT INSP. (18 MW)
 EG&G CONTRACTORS

H. BUNDY, RI
 B. BARTLETT, RI
 B. BRESLAU, RIV
 RIII SUPPORT 18 MW
 RIV SRI ASSIST
 W. JOHNSON, 3 MW
 L. YANDELL, 3 MW
 D. CARPENTER, 4 MW

NOTE: OTHER SPECIALIST WILL BE ASSIGNED AS NEEDED TO MEET SPECIFIC REQUIREMENTS.

*THIS TEAM SHOULD BE THE SAME TEAM AS FOR CPSES AND WILL BE COORDINATED BY MURPHY AND MULLIKIN OF RIV

GENERAL UNDERSTANDING

REGION III AND RIV COOPERATIVE EFFORTS

1. Region IV has identified cooperative efforts for the Wolf Creek inspection program which are primarily "stand alone." Region III should schedule, conduct, review, and manage these efforts to produce a final work product, inspection reports.
2. Region III and Region IV will maintain open communication on the progress and results of Region III efforts. The Region IV contacts are L. Martin for technical, and R. Denise for managerial.
3. The Region III inspection reports will be issued by Region IV in accordance with the Region IV guidance on schedules. The Region III inspection reports will be signed by the Region III inspectors and reviewed/approved by Region III management.
4. Region IV will normally follow up on open items, violations, etc., from Region III inspections. There may be instances where it is more effective for Region III to perform followup; in these cases, Region IV will request the followup.
5. Region IV will maintain a list of "open items" in the Resident Inspector's office. Region III inspectors may contribute to closure of such items as time becomes available during their assigned inspections. Efforts along this line are aimed at efficiency in the use of NRC resources, are voluntary for Region III, and are not intended as a substitute for Region III assigned efforts.

WOLF CREEK PROJECT TASK FORCE

PROJECTED INSPECTION ALLOCATIONS TO SUPPORT FUEL LOAD SCHEDULE

<u>Task</u>	<u>RIV</u>	<u>RIII</u>	<u>EG&E</u>
2512 Program	34 m/wks	10 m/wks	
2513 Program	56 m/wks	12 m/wks*	10 m/wks
2514 Program	26 m/wks	2 m/wks	
50.55(e) Followup			16 m/wks
IEB Closeout			10 m/wks
URI & Violation Closeout	5 m/wks		5 m/wks
Allegation Followup	5 m/wks		
NUREG 0737		10 m/wks	
SUBTOTALS	<u>126 m/wks</u>	<u>34 m/wks</u>	<u>41 m/wks</u>

*includes 2 man-weeks for Fire Protection team participation

TOTAL = 199 m/wks effort

RECOMMENDED REGION III TASKS

2512	Program: Module	Description HVAC	Est. Task Time 50 man-days
2513	Program: Module	Description	
	70305	Reactor Prot. System	2 man-days
	70306	Loss of Offsite	2 man-days

Mandatory Test Witnessing

	70316	Loss of Offsite Power Test	2 man-days
	70317	Reactor Protection	3 man-days

Mandatory Test Result Evaluation

	70325	Reactor Protection System Test	3 man-days
	70326	Loss of Offsite Power	1 man-day
	35741	QA Program - Audits	3 man-days
	35742	QA Program - Document Control	3 man-days
	35743	QA Program - Maintenance	4 man-days
	35745	QA Program - Surveillance	8 man-days
	35746	QA Program - Procurement Control	3 man-days
	35748	QA Program - Records	3 man-days
	35750	QA Program - Test & Measurements Equipment	3 man-days

Review

42452	Emergency Procedures Inspection	5 man-days
-------	------------------------------------	------------

Witness

70461	Transvering incore Probe System Test	2 man-days
-------	---	------------

0737	Followup	50 man-days
------	----------	-------------

Fire Protection team participation		10 man-days
------------------------------------	--	-------------

2514 Program

Module	Description	
35501	QA for SU Testing	10 man-days

TOTAL RIII Est. Task Time		34 man-weeks
---------------------------	--	--------------

WOLF CREEK CONSTRUCTION INSPECTION

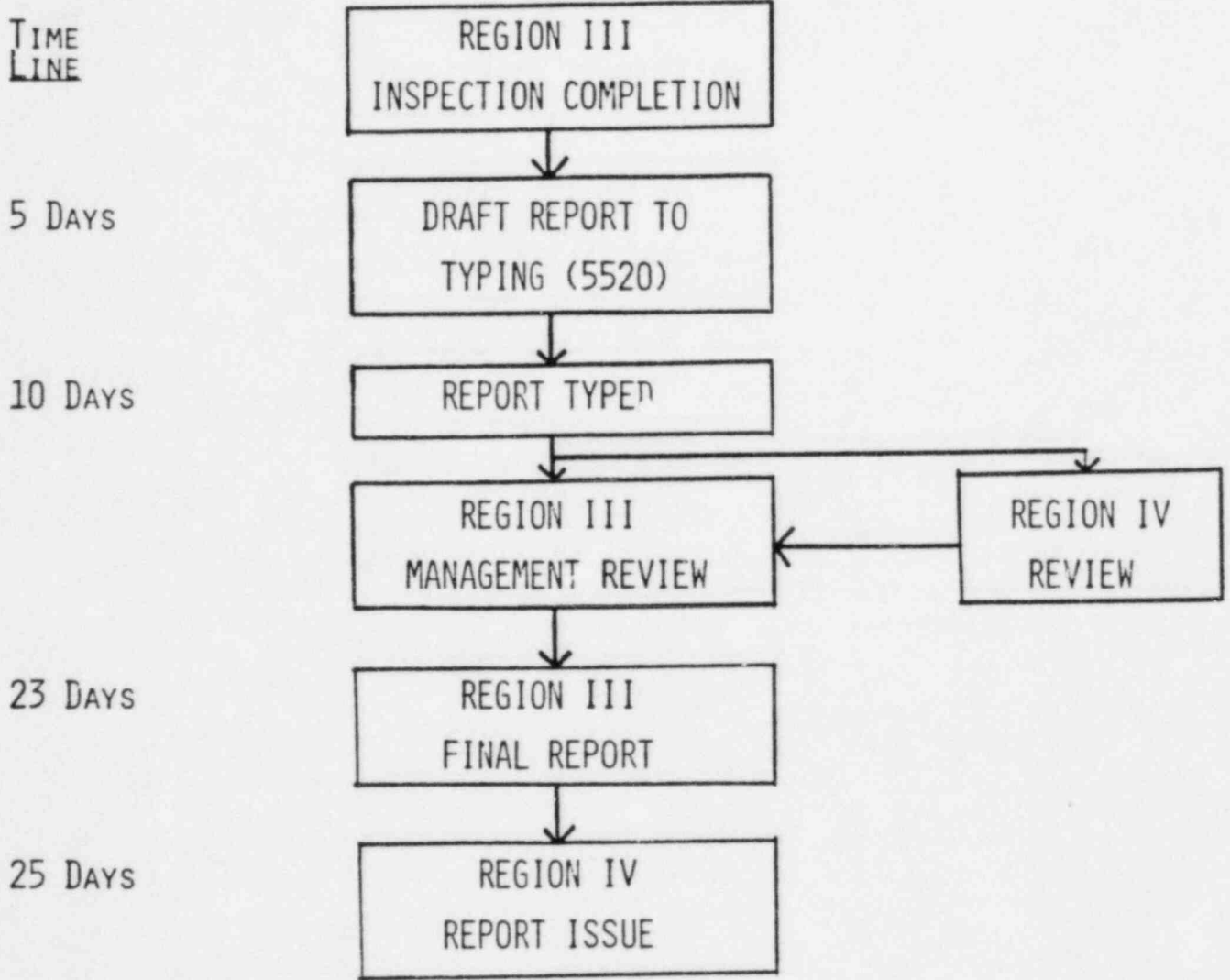
	7/30	8/6	8/13	8/20	8/27	9/3	9/10	9/17	9/24	10/1	10/8	10/15	10/22	10/29	11/5	11/12	
GILBERT	■	■	■	■	■	■	■	■	■	■	■	■	■	■	■	■	38
BARNES	■	■	■	■	■	■	■	■	■	■	■	■	■	■	■	■	29
NORMAN	■	■	■	■	■	■	■	■	■	■	■	■	■	■	■	■	18
MULLIKIN	■	■	■	■	■	■	■	■	■	■	■	■	■	■	■	■	30
BESS	■	■	■	■	■	■	■	■	■	■	■	■	■	■	■	■	30
A. JOHNSON	■	■	■	■	■	■	■	■	■	■	■	■	■	■	■	■	13
TAYLOR	■	■	■	■	■	■	■	■	■	■	■	■	■	■	■	⊙	33
RIII	WOLF CREEK PREOPERATIONAL INSPECTION																50
SMITH	■	■	■	■	■	■	■	■	■	■	■	■	■	■	■	■	■
BUNDY	■	■	■	■	■	■	■	■	■	■	■	■	■	■	■	■	■
BARTLETT	■	■	■	■	■	■	■	■	■	■	■	■	■	■	■	■	■
BRESLAU	■	■	■	■	■	■	■	■	■	■	■	■	■	■	■	■	■
SRI ASSIST	■	■	■	■	■	■	■	■	■	■	■	■	■	■	■	■	■
RIII	■	■	■	■	■	■	■	■	■	■	■	■	■	■	■	■	■
FIRE TEAM	■	■	■	■	■	■	■	■	■	■	■	■	■	■	■	■	■

*Holiday Week

■ INSPECTION ▨ DOCUMENTATION, PREPARATION, & REVIEW ⊙ INCLUDES ALLEGATION REVIEW ▩ TO BE DETERMINED BY RIV

WOLF CREEK PLANT

REGION III INSPECTION REPORT HANDLING



TASK SUMMARY

SPECIAL TASKS	15
ELECTRICAL AB	10
STRUCTURES AB	5
RACEWAYS AB	30
DESIGN	5
P. SERVICE	5
SEPARATION	15
PENETRATIONS	10
S.R. COMP.	10
I&C	10
PIPE & SUPPORT	55
HVAC	50
	<hr/>
	220 MAN-DAYS

SUPPLEMENTAL INFORMATION

FOR

CONSTRUCTION INSPECTIONS AT WCGS

1. Schedules are based on approximately 4 days onsite each visit except for *week which is a 3-day visit week.
2. Inspection reports "Documentation" should follow visits, generally as indicated, with all routine or basic IPs being done first, with the as-built and TI work following. The following inspection report numbers have been charged out and should be utilized as follows:
 - a. 84-18 - Period ending August 17 will capture all basic (routine inspections completed to that time.
 - b. 84-22 - Period ending September 27 will capture the electrical, as-built, and train separation areas.
 - c. 84-23 - Period ending October 12 will capture the as-built on other than electrical.
3. 766 charges should be as follows:
 - a. All basic program IPs recorded as the 2XXXXX IP number.
 - b. All IPs referenced to TI-2512/11 should be as follows:
 - (1) Pipe Supports and Restraints = 225A11P
 - (2) As-built = 225B11P
 - (3) Craft Qualifications = 225C11P

RESOURCE SUMMARY

<u>Gilbert/Barnes</u>	<u>A. Johnson</u>	<u>D. Norman</u>	<u>Mullikin/Bess</u>	<u>Taylor</u>	<u>R III</u>
Pipe & Support 55	Separation 15	SR Comp. 10	Elect. AB 10	Structures 5	HVAC 50
P.S. Insp. 5		Pene. 10	Raceways 30	Design 5	
Special <u>5</u>			I&C 10	Special 5	
65	15	20	Special <u>5</u> 55	<u>15</u>	

REGION III 2513 PREOPERATIONAL SCHEDULE FOR WOLF CREEK

<u>Module</u>	<u>Title</u>	<u>Man-days</u>	<u>July</u>	<u>August</u>	<u>Sept.</u>	<u>Oct.</u>	<u>Nov.</u>	<u>Dec.</u>
<u>Mandatory Test Procedure Review</u>								
70305	Reactor Prot. System	2 man-days		8/1-8/15				
70306	Loss of Offsite Power	2 man-days		8/1-8/15				
<u>Mandatory Test Witnessing</u>								
70316	Loss of Offsite Power Test	2 man-days				10/7-10/20		
70317	Reactor Protection	3 man-days			9/14-12/31			
<u>Mandatory Test Result Evaluation</u>								
70325	Reactor Protection System Test	3 man-days				10/1-10/15		
70326	Loss of Offsite Power	1 man-day				10/20-11/1		
35741	QA Program - Audits	3 man-days			9/15-9/30			
35742	QA Program - Document Control	3 man-days		8/1-8/15				
35743	QA Program - Maintenance	4 man-days		8/15-8/30				
35745	QA Program - Surveillance Testing	8 man-days		8/1	9/1			
35746	QA Program - Procurement Control	3 man-days			9/15-9/30			
35748	QA Program - Records	3 man-days		8/1-8/15				
35750	QA Program - Test & Measurements Equipment	3 man-days		8/1-8/15				
<u>Review</u>								
42452	Emergency Procedures Inspection	5 man-days		8/5-8/12				
<u>Witness</u>								
70461	Transferring Incore Probe System Test	2 man-days			9/12-9/27			
0737	Followup	50 man-days		8/1	- - -	10/1		

2513 PREOPERATIONAL SCHEDULE FOR WOLF CREEK

Activity	Title	Man-days	July	August	Sept.	Oct.	Nov.	Dec.
35301	QA for Preop.	Complete, Closed out, Report 84-01						
37301	As-Built	Total Man-hours Needed (50 man-days)	7/16	- - -	- - -	- - -	11/16	
70300	Preop. Procedure	50% Complete, Report 84-01 (44 hrs. expended) (48 hrs. remain) (6 man-days)		8/1-8/30				
70301	Overall Test Program Review	Complete, Closed Out, Report 84-01 (144 man- hours) (18 man-days)						
70302	Test Program Implemen- tation	70% Complete, Report 83-33 (54 hrs. expended) (24 hrs.) (3 man-days remain)	7/9	- - -	9/1			
70311	Preop. Procedure Verification	10% Complete, Report 83-33 (26 hrs. expended) (240 hrs.) (30 man-days remain)	7/9	- - -	9/1			
70312	Preop. Witnessing	30% Complete, Report 84-07 (265 hrs. expended) (10 man-days) (100 hrs.)	7/15	- - -	- - -	- - -	- - -	12/31
70329	Test Results Evaluation	(18 man-days)	7/15	- - -	- - -	- - -	- - -	12/31
70370	Test Supports and Restraints	(6 man-days) (16 hrs. cold) (16 hrs. during heating) (16 hrs. hot)	7/20	8/20				
70400	Preop. Test Result Evaluation	(20 man-days)		8/1	- - -	- - -	- - -	12/31
71302	Preop. Test Program Verification	40% Complete, Report 84-07 (305 hrs. expended) (38 man-days) (10 man-days approx. 4 hrs. week)	7/15	- - -	- - -	- - -	- - -	12/31
70304	ISFAS Test (Procedure Review)	(5 man-days)	7/9-7/27					
70305	Reactor Protection System Procedure Review	(2 man-days)		8/1-8/15				
70306	Loss Offsite Power Procedure Review	(2 man-days)		8/1-8/15				
70307	Integrated Leak Rate Procedure Review	(5 man-days)	7/19-7/24					

<u>Module</u>	<u>Title</u>	<u>Man-days</u>	<u>July</u> (7 man-days)	<u>August</u>	<u>Sept.</u> 7/16-7/27	<u>Oct.</u>	<u>Nov.</u>	<u>Dec.</u>
70308	Integrated Hot Functional Test Procedure Review							
70362	RCS Hydro Test Procedure Review	Complete, Report 84-01 (2 man-days)						
70334	ESFAS Test Procedure Review	(3 man-days)	7/9-7/27					
70336	Residual Heat Removal System Test Procedure Review	Complete, Report 84-09, Not Entered in 766						
70340	DC Power System Test Procedure Review	Complete, Report 84-03						
70341	Emergency Standby Power Supply System Procedure Review	(3 man-days)	7/23	8/10				
70348	Main Feedwater Control System Test Procedure Review	(3 man-days)	7/23	8/3				
70304	Containment Spray	Complete, Report 84-09, Not Entered in 766						
70313	Containment System Intergrated Leak Rate Test (witnessing)	(5 man-days)		8/22-8/30				
70314	Intergrated Hot Functional Test (witnessing)	(10 man-days)	7/13	8/1				
70315	Engineered Safety Features Test (witnessing)	(5 man-days)	7/9		9/14			
70316	Loss offsite Power Test (witnessing)	(2 man-days)				10/7-10/20		
70317	Reactor Protection System Test (witnessing)	(3 man-days)			9/14	- - -	- - -	12/31
70462	Reactor Coolant System Hydro (test witnessing)	Complete, Report 84-05 (30 man-hours)						
70433	Chemical Control System Test (witnessing)	(3 man-days) Cold Hot	7/9-7/20 7/25	8/10				

Module	Title	Man-days	July	August	Sept.	Oct.	Nov.	Dec.
70434	Engineered Safety Features Activation System Test (witnessing)	(2 man-days)			9/14-9/25			
70436	Residual-Heat Removal System Test (witnessing)	(2 man-days) Cold Hot	7/9-7/20 7/25	8/10				
70440	DC Power System Test (witnessing)	(2 man-days)				10/7-10/20		
70443	Containment Spray System Test (witnessing)	(2 man-days)			9/14-9/25			
70452	Remote Reactor Shutdown Test (witnessing)	(2 man-days)				10/6-10/12		
70461	Transversing Incore Probe System Test (witnessing)	(2 man-days)			9/12-9/27			
<u>Mandatory Test Results Evaluation</u>								
70322	Engineered Safety Features Test	(2 man-days)				10/1-10/15		
70323	Containment System: Integrated Leak Rate Test	(4 man-days)			9/1-9/15			
70324	Integrated Hot Functional Test	(4 man-days)		8/15-8/30				
70325	Reactor Protection System Test	(2 man-days)			9/15	- - -	- - -	12/30
70326	Loss of Offsite Power Test	(1 man-day)				10/20	11/1	
70562	Reactor Coolant System Hydrostatic Test	(2 man-days)	7/18-7/30					
<u>Primal Test Results Evaluation</u>								
70532	Control Rod System	(2 man-days)				10/1-10/15		
70533	Chemical Control System	(2 man-days)			9/15-9/30			
70535	Safety and Relief Valves	(1 man-day)					11/1-11/15	
70537	Main Steam Isolation Valves	(1 man-day)						12/1-12/15
70538	Auxiliary Feedwater System	(1 man-day)					11/15-11/30	

Module	Title	Man-days	July	August	Sept.	Oct.	Nov.	Dec.
70545	Containment Heating, Colling, Ventilation, System Test	(2 man-days)			9/15-9/30			
70547	Pressurizer and Level Control System Test	(2 man-days)			9/1-9/15			
70554	Nuclear Instrumentation System Test	(2 man-days)					11/1-11/15	
70560 12/15	Manual Reactor Control System Test	(3 man-days)						12/1-
70551 12/15	Integrated Reactor Control System	(3 man-days)						12/1-
<u>Operations</u>								
36301	Operational Staffing Inspection	(2 man-days)		8/1-8/15				
41301	Inspection of Operational Staff Training	(10 man-days) 50% Complete, 53 man-hours expended		8/15-8/30				
42400	Plant Procedures Inspection	(10 man-days) 74 hrs Expended, 70% Complete		8/1-8/30				
42450	Operating Procedures	(7 man-days) 16 hours Expended, 30% Complete						
42452	Emergency Procedures Inspection	(5 man-days) Region III		8/5-8/12				
71301	Technical Specifications Review	Complete, 21 hrs. Expended						
<u>Maintenance</u>								
42451	Maintenance Procedures Inspection	35 hrs. Expended, 20% done (3 man-days remain)				10/1-10/15		
35742	QA Program - Document Control	(3 man-days) Region III		8/1-8/15				
35743	QA Program - Maintenance	(4 man-days) Region III		8/15-8/30				
35744	QA Program - Design Changes & Modifications	(8 man-days)		8/15-8/30				
<u>Refueling</u>								
60501	Fuel Receipt and Storage	(2 man-days) 5 trucks received 10 more - 1 a week	7/15	- - -	9/15			

<u>Module</u>	<u>Title</u>	<u>Man-days</u>	<u>July</u>	<u>August</u>	<u>Sept.</u>	<u>Oct.</u>	<u>Nov.</u>	<u>Dec.</u>
<u>Fire Protection</u>								
64703	Fire Prevention/Protection	(10 man-days)	7/30	8/15				
<u>Surveillance</u>								
35745	QA Program - Surveillance Testing	(8 man-days) Region III		8/1	9/1			
35749	QA Program - Tests & Experiments	(2 man-days)		8/1-8/19				
35750	QA Program - Test & Measurement Equipment	(3 man-days) Region III		8/1-8/15				
<u>Quality Assurance</u>								
35740	QA Program - QA/QC Administration	(9 man-days) 5 hrs. Expended 10%		8/1	9/1			
35741	QA Program - Audits	(3 man-days)		8/15	9/30			
35746	QA Program - Procurement Control	(3 man-days)			9/15-9/30			
35747	QA Program - Receipt, Storage, & Handling of Equipment & Materials	(5 man-days) 5 hrs. Expended 10%	7/15	8/15				
35748	QA Program - Records	(3 man-days)		8/1-8/15				
40301	Safety Committee Activity Inspection	(2 man-days) 3 hrs. Expended 50%		8/1-8/15				
30301	Second Corporate Management Meeting	Complete						
30703	Management Meetings Exit Meeting	As Needed (W)						
90711	Nonroutine Event Review	W						
91300	Inspection of Title 10 Requirements	W						
92701	Followup on Inspector Identified Problems	W						
92702	Followup on Items of Noncompliance	W						

<u>Module</u>	<u>Title</u>	<u>Man-days</u>	<u>July</u>	<u>August</u>	<u>Sept.</u>	<u>Oct.</u>	<u>Nov.</u>	<u>Dec.</u>
92703	Bulletin Followup/Action Letter Followup	W						
92704	Inspection of Responses to Hdqtrs. Requests	W						
92705	Inspection of Responses to Regional Requests	W						
92706	Independent Inspection Effort	W						
93700	Inspector Dispatched to Site	W						
93701	Followup on Significant Event that Occurs While Inspector is on site	W						
94700	Participation in ACRS Meetings	W						
94300	Inspection Preparatory to Op. License Issuance	W						
35030	IE Input of NRR Review of Qa Topical Reports	W						
92715	Review of Part 21 Reports	W						
92716	Part 21 Report Followup	W						
92718	Safety Evaluation RPT Review & Followup	18 hrs. Expended						

2514 PREOPERATIONAL SCHEDULE FOR WOLF CREEK

<u>Module</u>	<u>Title</u>	<u>Man-days</u>	<u>July</u>	<u>August</u>	<u>Sept.</u>	<u>Oct.</u>	<u>Nov.</u>	<u>Dec.</u>
<u>General</u>								
35501	QA for Startup Test Program, Region III	10 man-days		8/1	9/30			
72300	Startup Test Procedure	10 man-days		8/1	9/30			
72301	Startup Test Results Evaluation	10 man-days			9/30	- - -	- - -	- - -2/85
70302	Startup Test Witnessing and Observation					10/1	- - -	12/31
72400	Overall Startup Test Program			8/1	- - -	10/1		
72500	Initial Fuel Loading Procedure Review	3 man-days		8/1	- - -	10/1		
72524	Initial Fuel Loading Witnessing					10/1	- - -	12/31
83530	Radiation Protection - Startup and Power Ascension	5 man-days				10/1	- - -	12/31
84530	Radioactive Waste Systems Startup and Power Ascension					10/1	- - -	12/31
90501	Reportable Matters - Test Program	As Needed (W)						
93700	Inspector Dispatched to Site - Test Program Related	W						
72564	Precritical Test Procedure Review (Protective Trip Circuit, Group B, and Rod Drop Measurement, Group A)	2 man-days				10/1-10/30		
72566	Precritical Test Procedure Review (RCS Leak Test, Group A, and Pressurizer Effectiveness, Group B)	2 man-days				10/1-10/30		
72570	Initial Criticality Procedure Review (Group A and B)	4 man-days			9/1	10/1		

<u>Module</u>	<u>Title</u>	<u>Man-days</u>	<u>July</u>	<u>August</u>	<u>Sept.</u>	<u>Oct.</u>	<u>Nov.</u>	<u>Dec.</u>
72572	Low Power Test Procedure Review (Moderator Temperature Coefficient Measurement and Boron Reactivity Worth, Group B, and Rod Worth and Pseudo Rod Ejection, Group A)	2 man-days			9/1	10/1		
72576	Power Ascension Test Procedure Review (Natural Circulation, Group A, and Power Reactivity Coefficient Measurement, Group B)	2 man-day			9/1	10/1		
72578	Power Ascension Test Procedure Review (Evaluation of Core Performance) (Group A and B)	3 man-days				10/1	11/1	
72580	Power Ascension Test Procedure Review (Turbine Trip, Group B, and Trip, Group A)	2 man-days				10/1	11/1	
72582	Power Ascension Test Procedure Review: Loss of Offsite Power (Group A and B)	2 man-days				10/1-10/15		
72583	Power Ascension Test Procedure Review: Shutdown from Outside the Control Room (Group B)	2 man-days				10/1-10/15		
72584	Power Ascension Procedure Review (Evaluation of Flux Asymmetry or Pseudo Rod Ejection Test) (Group A)	2 man-days				10/1-10/15		
72592	Initial Criticality Witnessing	3 man-days					11/15	12/15
72596	Precritical Data Review	2 man-days				10/1	11/1	
72600	Power Level Plateau Data Review (25%)	2 man-days						12/1-12/30

Module	Title	Man-days	JULY	AUGUST	SEPT.	OCT.	NOV.	DEC.
72608	Power Level Plateau Data Review (50%)	2 man-days						12/1-12/3
72616	Power Level Plateau Data Review (75%)	2 man-days						12/1-12/30
72624	Power Level Plateau Data Review (100%)	2 man-days						12/1-12/30

SUMMARY OF WOLF CREEK OPEN ISSUESKey to Tracking Numbers

- A - Allegations
- B - IE Bulletins, Circulars, Information Notices
- C - CAT Inspection Findings
- D - Deficiency Reports 50.55(e) and Part 21 Reports
- E - Inspection Findings (Violations, Unresolved Items, and Open Items)
- G - Generic Letter Issues
- H - Hearing Open Issues
- I - Investigation Report Issues
- L - SALP Open Issues
- M - Congressional Concerns or Issues
- O - Operator Licensing Open Items
- P - Inspection Program Status
- Q - Final QA Reinspection Issues
- R - Room/System Turnover Status (those to do)
- S - SER Open Items
- T - Task Force Special Inspection Items
- U - Unfinished Punchlist Items
- V - IDVP Open Issues
- Z - Vendor Open Issues

Key to Discipline Codes

- A - Independent Assessment
- B - Bolts
- C - Concrete/Rebar
- D - Design of Pipe and Pipe Supports (Buck to NRR)
- E - Electrical
- F - Fire Protection
- H - Hangers
- I - Intimidation
- K - Cable Terminations
- M - Miscellaneous
- N - NDE
- O - Coatings
- P - Pipe (Construction of)
- Q - QA/QC
- R - Records
- S - Instrumentation
- T - Test Program
- U - Procedure/Instruction Review
- V - Vendor or Generic
- W - Welding
- X - Emergency Preparedness

Key to Completion Category

- 1 - Prior to OL
- 2 - Fuel Loading
- 3 - Initial Criticality
- 4 - Zero Power Testing
- 5 - Low Power Testing
- 6 - Power Ascension Testing
- 7 - Full Power

ADDITIONS TO:
SUMMARY OF WOLF CREEK OPEN ISSUES

<u>TRACKING NUMBER</u>	<u>SCHEDULE OPEN/COMPLETE</u>	<u>RESOURCES REQUIRED M/DAY</u>	<u>CROSS REFERENCE (ALLEGATION NO: IR #, MC #)</u>	<u>DATE:</u>	<u>STATUS</u>	<u>CLOSURE DATE DOCUMENT</u>
------------------------	-------------------------------	---------------------------------	--	--------------	---------------	------------------------------

Description (Narrative):

Action (Narrative):

Description (Narrative):

Action (Narrative):

Description (Narrative):

Action (Narrative):

Description (Narrative):

Action (Narrative):

