

SECRET NUMBER
PROD. & UTIL. FAC. 50-48204

305



UNITED STATES
NUCLEAR REGULATORY COMMISSION
WASHINGTON, D.C. 20555

January 28, 1985

COCKETED
JAN 30 1985

OFFICE OF THE
CHAIRMAN

SERVED JAN 30 1985

'85 JAN 30 18:17

MEMORANDUM FOR: File
FROM: Philip J. Polk, Technical Assistant to Chairman Palladino
SUBJECT: CHAIRMAN PALLADINO'S WOLF CREEK SITE VISIT OF 1/24/85

RP

Chairman Palladino visited the Wolf Creek Nuclear Plant on January 24, 1985. Attendance included NRC personnel, licensee personnel, representatives from the Missouri Public Service Commission and the Kansas Corporation Commission, and one interested member of the public (enclosure 1). Enclosure 2 is the detailed schedule.

There was a one-half hour discussion with the licensee (enclosure 3) followed by a two-hour site tour. During the afternoon, there were an awards ceremony, a simulator demonstration, and a thirty-minute press conference.

Enclosures:

- 1. Meeting Attendance
- 2. Schedule
- 3. Outline of Discussion

cc: Hearing Service List (w/enclosure) ✓
EDO (wo/enclosure)
W. Reamer (wo/enclosure)

8502150450 850128
PDR COMMS NRCC
CORRESPONDENCE PDR

DS02

1/24/85

W011 ERCH
ENCL (1)Meeting Attendance

<u>NAME</u>	<u>ORGANIZATION</u>
N. PALLADINO	NRC
P. Polk	NRC
R. D. MARTIN	NRC
W.G. GULDEMONIS	NRC
L. E. MARTIN	NRC
C. E. WISNEY	NRC
K. R. BROWN	KGFE
G. L. KOESTER	KGFE
C. C. MASON	KGFE
OTTO MAYNARD	KGFE
G. L. Koester	KGFE
F. T. Rhodes	KGFE
J. A. BAILEY	KGFE
ALLAN MEE	KEPCO
R. M. GRANT	KGFE
G. L. Fouts	KGFE
Don Low	KCL
Margalee Wright	KCC
DANA CRAWFORD	KCPL
Joe Kramer	KCPL
J. H. Mausker	MoPSC
STEWART WINN	MoPSC/OKA
John Holt	KGFE
Michael M Nichols	KGFE
J. M. Ison	KGFE
Mary Stephens	NAN.
G. W. Stanley	Bechtel
J. G. BERRA	DIC
J. A. Zell	KGFE
PAUL E TURNER	KGFE
Bruce BARTLETT	NRC
Shirley Allen	NRC

EX-112

CHAIRMAN PALLADINO
ITINERARY
FOR
VISITS TO WOLF CREEK AND WATERFORD
JANUARY 24 - 25, 1985
(TO BE ACCOMPANIED BY PHIL POLK)

WEDNESDAY - JANUARY 23, 1985

3:45 P.M. - LV H STREET OFFICE VIA COURIER ENROUTE/NATIONAL

4:44 P.M. - LV NATIONAL VIA EASTERN FLIGHT 319 (DINNER/NON-STOP)
SEAT/SMOKING - 30A

6:25 P.M. - AR KANSAS CITY, MO.

NOTE: YOU WILL BE MET AT THE AIRPORT BY BOB MARTIN/CLYDE WISNER
(REGION IV)

HOTEL ACCOMMODATIONS

HOLIDAY INN: 2700 WEST 18TH STREET
EMPORIA, KANSAS

TELEPHONE: 316/343-2200

GOV'T RATE: \$29.50
PLUS TAX

CONFIRMATION No. (NJP) 85CB768E (PJP) 85CBEC5E

9:00 P.M. - ARRIVE HOLIDAY INN IN EMPORIA

THURSDAY - JANUARY 24, 1985

VISIT WOLF CREEK - SEE ATTACHED DETAILED SCHEDULE

5:40 P.M. - LV KANSAS CITY VIA DELTA FLIGHT 1135 (DINNER/NON-STOP)

SEAT/SMOKING - 22A

7:07 P.M. - AR DALLAS

7:52 P.M. - LEAVE DALLAS VIA DELTA FLIGHT 284 - SEAT/SMOKING - 28A

8:59 P.M. - AR NEW ORLEANS

HOTEL ACCOMMODATIONS

HOWARD JOHNSON MOTEL: 6401 VETERANS BLVD/I-10 - GOV'T RATE: \$38.00/TAX
TELEPHONE: 504/885-5700

JANUARY 24, 1985 - DETAILED SCHEDULE

<u>DATE</u>	<u>TIME</u>	<u>EVENT</u>
JAN 24	6:30 A.M.	BREAKFAST AT MOTEL, TO INCLUDE CHAIRMAN PALLADINO, P. J. POLK, R. D. MARTIN, ^{Bob} C. E. WISNER, L. E. MARTIN, CHIEF, ^{CLT} WOLF CREEK TASK FORCE, W. G. GULDEMOND, ^{Bill} CHIEF, RESIDENT INSPECTOR INSPECTION PROGRAM FOR WOLF CREEK TASK FORCE, AND B. L. BARTLETT, RESIDENT INSPECTOR ^{Bob}
	7:45 A.M.	DEPART MOTEL FOR WOLF CREEK SITE
	8:30 A.M.	ARRIVE AT GATEHOUSE
	8:40 A.M.	MEETING WITH LICENSEE IN ADMINISTRATION CONFERENCE ROOM
		1. INTRODUCTION OF LICENSEE MANAGEMENT
		2. LICENSEE PRESENTATION ON FACILITY STATUS
		3. QUESTIONS AND DISCUSSION
	10:00 A.M.	ARRIVE AT THE TECH SUPPORT CENTER TO BEGIN TOUR
		<u>TOUR ROUTE</u> TECHNICAL SUPPORT CENTER, LOWER LEVEL TURBINE BUILDING, SWGR ROOMS, DIESEL GENERATOR ROOM, LOWER CABLE SPREADING ROOM, CONTROL ROOM, REACTOR AUXILIARY BUILDING, RADWASTE BUILDING, REACTOR CONTAINMENT. CHAIRMAN MAY RETURN TO RESIDENT TRAILER TO ANSWER QUESTIONS.

<u>DATE</u>	<u>TIME</u>	<u>EVENT</u>
JAN 24		
	12:00 P.M.	WORKING LUNCH BY KG&E IN ADMINISTRATION BUILDING CAFETERIA (ARRANGEMENTS MADE TO COMPENSATE FOR LUNCH EXPENSES).
	12:45 P.M.	DEPART SITE FOR EOF
	1:00 P.M.	ARRIVE EOF FOR THE FOLLOWING ACTIVITIES: <ol style="list-style-type: none">1. TOUR EOF (CHAIRMAN TO START TOUR WHILE R. D. MARTIN PRESENTS REACTOR OPERATOR LICENSE CERTIFICATES)2. TOUR OF SIMULATOR3. SIMULATOR EXERCISE TO DEMONSTRATE EMERGENCY PROCEDURE AND DISCUSSIONS WITH OPERATORS
	2:15 P.M.	PRESS CONFERENCE
	2:45 P.M.	CHAIRMAN PALLADINO AND PARTY DEPART SITE FOR KANSAS CITY AIRPORT

<u>DATE</u>	<u>TIME</u>	<u>EVENT</u>
JAN 24	5:40 P.M.	CHAIRMAN PALLADINO AND PARTY DEPART KANSAS CITY FOR DFW AIRPORT VIA DELTA FLIGHT 1135
	7:07 P.M.	ARRIVE DFW AIRPORT
	7:52 P.M.	DEPART DFW AIRPORT VIA DELTA FLIGHT 284
	8:59 P.M.	ARRIVE NEW ORLEANS AIRPORT. PROCEED TO HOWARD JOHNSON HOTEL AT I-10 AND VETERANS BOULEVARD VIA AUTO DRIVEN BY C. WISNER
<u>JANUARY 25, 1985</u>		
	7:30 A.M.	BREAKFAST AT MOTEL, TO INCLUDE CHAIRMAN PALLADINO, P. J. POLK, R. D. MARTIN, AND C. E. WISNER, INCLUDING SENIOR RESIDENT INSPECTOR G. L. CONSTABLE, RESIDENT INSPECTOR T. A. FLIPPO, AND RIV REACTOR PROJECT SECTION B CHIEF, W. A. CROSSMAN
	8:30 A.M.	DEPART HOTEL FOR WATERFORD UNIT 3 SITE
	9:20 A.M.	ARRIVE WATERFORD UNIT 3 SITE
	--	PROCEED TO ADMINISTRATION BUILDING CONFERENCE ROOM THROUGH PLANT SECURITY

<u>DATE</u>	<u>TIME</u>	<u>EVENT</u>
JAN 25	9:30 A.M.	BRIEFING BY LP&L

STATUS OF:

- PHASE III TEST PROGRAM
- MANAGEMENT QUALIFICATIONS
- OPERATOR TRAINING AND LEVEL OF COMMERCIAL EXPERIENCE
- IDENTIFICATION OF SIGNIFICANT PROBLEM AREAS AND LICENSING STATUS
- PLAN FOR SITE TOUR
- QUESTIONS AND DISCUSSIONS

	10:30 A.M.	PLANT TOUR
--	------------	------------

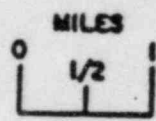
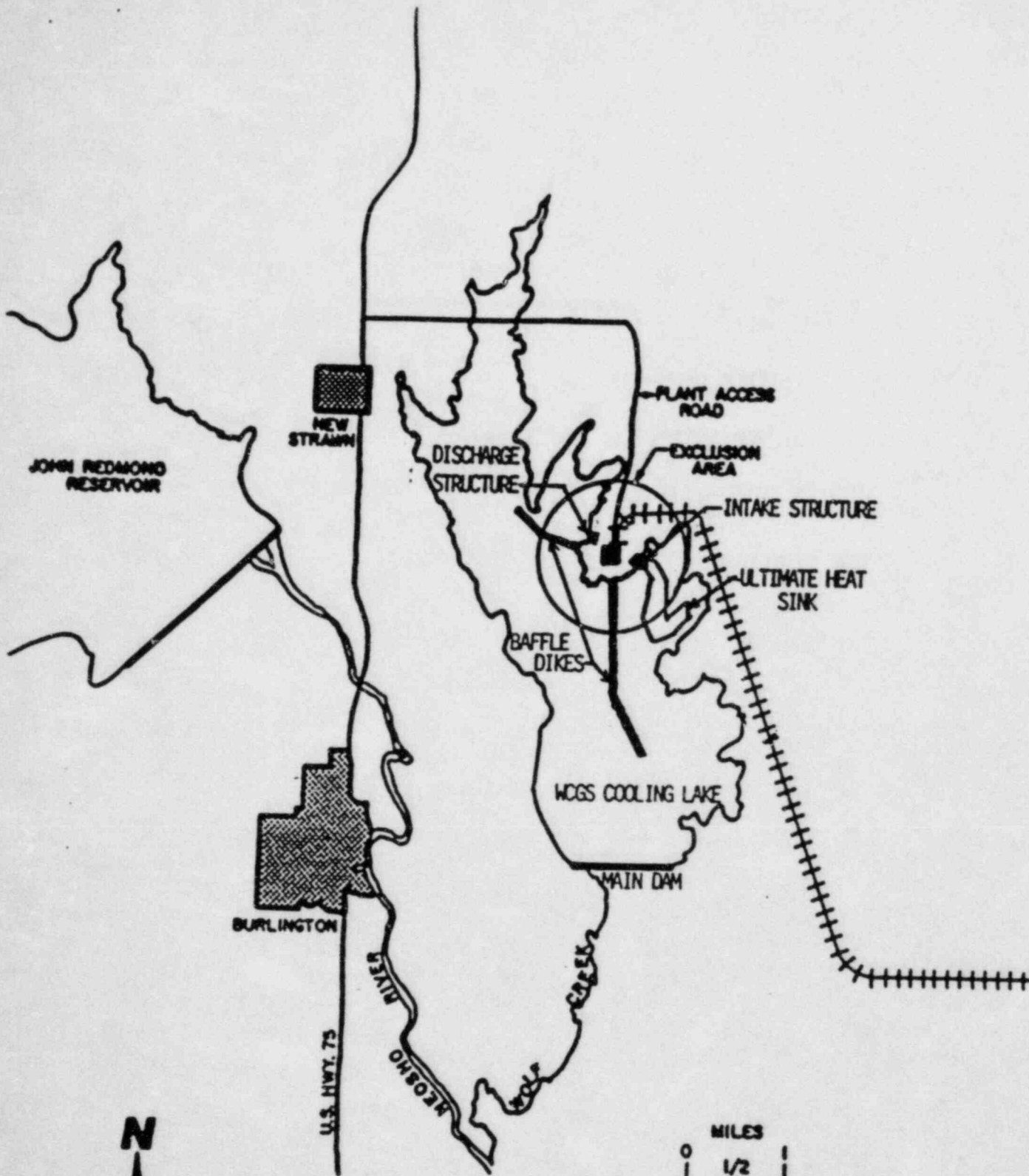
TO INCLUDE:

- BASEMAT CRACK AREA
- CONTAINMENT (IF AVAILABLE)

<u>DATE</u>	<u>TIME</u>	<u>EVENT</u>
JAN 25		<ul style="list-style-type: none"> - AUXILIARY BUILDING INCLUDING RADIOACTIVE WASTE FACILITIES AND DIESEL GENERATORS (INCLUDES SAFE SHUTDOWN PANEL) - CONTROL ROOM - TURBINE BUILDING
	12:00 P.M.	WORKING LUNCH IN ADMINISTRATION BUILDING CONFERENCE ROOM PROVIDED BY LP&L
	1:00 P.M.	CONTINUE PLANT TOUR
	2:45 P.M.	DISCUSSIONS WITH LP&L IN ADMINISTRATION BUILDING CONFERENCE ROOM
	3:15 P.M.	PRESS CONFERENCE AT SAME LOCATION
	4:00 P.M.	CHAIRMAN PALLADINO AND PARTY DEPART TO NEW ORLEANS INTERNATIONAL AIRPORT
	5:35 P.M.	CHAIRMAN PALLADINO DEPARTS NEW ORLEANS FOR WASHINGTON NATIONAL VIA EASTERN FLIGHT 60 (DINNER/NON-STOP) SEAT/SMOKING: 29
	8:39 P.M.	ARRIVE WASHINGTON NATIONAL AIRPORT
		COURIER WILL MEET YOU AT THE AIRPORT

CHAIRMAN PALLADINO
VISIT TO
WOLF CREEK GENERATING STATION

January 24, 1985



MAJOR DIFFERENCES

WOLF CREEK

CALLAWAY

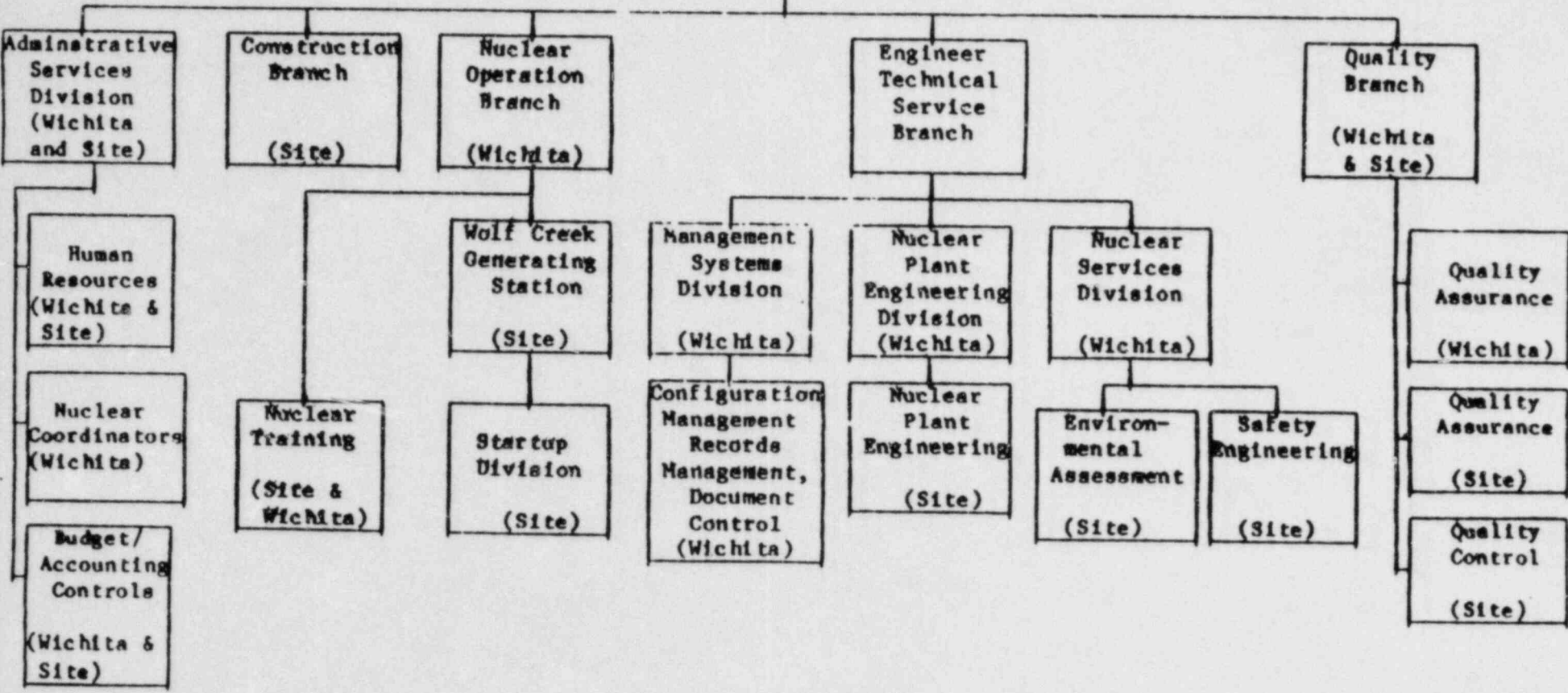
- | | | |
|----|---|--|
| 1. | COOLING LAKE | COOLING TOWER |
| 2. | UHS DAM SUBMERGED
IN COOLING LAKE | UHS RETENTION POND |
| 3. | CIRCULATING WATER SCREENHOUSE -
TRAVELING SCREENS | CIRCULATING WATER SCREENHOUSE -
FIXED SCREENS |
| 4. | SERVICE WATER FROM THE
CIRCULATING WATER SYSTEM | SERVICE WATER FROM
HYPERBOLIC COOLING TOWER |
| 5. | WATER INTAKE AND DISCHARGE
TO COOLING LAKE | WATER INTAKE AND DISCHARGE
TO COOLING TOWER BASIN |
| 6. | MAKEUP WATER SCREENHOUSE FROM
NEOSHO RIVER MAKEUP DISCHARGE
TO THE COOLING LAKE | MAKEUP WATER INTAKE AND
DISCHARGE TO MISSOURI RIVER |

NUCLEAR DEPARTMENT ORGANIZATION

VICE PRESIDENT - NUCLEAR

* Manager Licensing

* see Nuclear Services Division



YEARS OF EXPERIENCE

	<u>COMM'L NUCLEAR</u>	<u>MILITARY NUCLEAR</u>	<u>JOB RELATED</u>	<u>WOLF CREEK</u>
DIR NUC OPNS	17	3	4	.25
MGR OPNS SUPT	10 (2.5)	7.5	.5	2
DIR ENGR & TEC SER	4	4	2	9
MGR NUC ENGR	17	-	2	11
MGR NUC SERV	-	4	8	10
MGR NUC TRNG	6.5	5.0	2	.8
DIR QUALITY	-	-	10	1
MGR QA (SITE)	-	2	3	3
MGR ADMIN SERV	-	-	20	2
MGR MGMT SYS	-	-	-	11
MGR FAC & ANAL	4.5	-	3	3
MGR RAD & LIC SERV	3 (2)	-	5	7
MGR LICENSING	2 (.5)	-	-	7

Plant Organization

Plant Manager-1

Secretary-1

Supt of Maint-1

General Clerk-1

Maint Svcs Supvr-1

Maint Engr-6

Maint Tech-4

Mat Cont Supvr-1

Mat Coord Sup-1

Storeroom Sup-1

Warehouse Att-7

Utility Supvr-1

Utility Mech-3

Lead Bldg Svman-3

Bldg Serviceman-12

Maint Supp Supvr-1

Mech Supvr-2

Welder-3

Machinist-3

Lead Mechanic-3

Mechanic-22

Utility Hlpr-14

Electrical Supv-2

Lead Electrician-1

Electrician-13

Utility Hlpr-7

HVAC Supervisor-1

HVAC Mechanic-5

TOTAL 119

Supt of Operations-1

General Clerk-1

Ops Coord - Ops-1

Shift Supervisor-7

Supervising Opr-6

Reactor Opr

Station Opr 50

Utility Helper

Ops Coord - Plan-

ning and Projects-1

Engineer/Spec-0

Surv Coord-1

System Analyst-1

TOTAL 69

Supt of Tech Supp-1

General Clerk-1

Reactor Eng Supvr-1

Reactor Engineer-2

I&C Supervisor-1

Engineer/Spec-4

I&C Coordinator-2

I&C Spec-5

I&C Tech-46

Utility Helper-6

Lead Comp Eng-1

Comp Eng/Spec-4

App Prog Trn-6

Site Chemist-1

Chemistry Supvr-4

HP/Chem Tech-14

Utility Helper-6

Site Health Phys*-1

HP Supervisor-5

HP/Chem Tech 25

Utility Helper

TOTAL 136

Supt of Plant Supp-1

General Clerk-1

Fire Prot Spec*-1

Training Spec-1

Chief of Security*

Security Staff

Results Eng Supvr-1

Results Eng-22

TOTAL 27

Supt of Regulatory-1
Quality and Admin
Services

General Clerk-1

Engineering Spec-1

Safety Specialist-1

Nuc Medical Spec-1

Site Emerg Planning
Administrator-1

Document Cont Supv-1

Doc Cont Clerk-14

Analy&Film Opr-16

Admin Supvr-1

Clerk-30

TOTAL 68

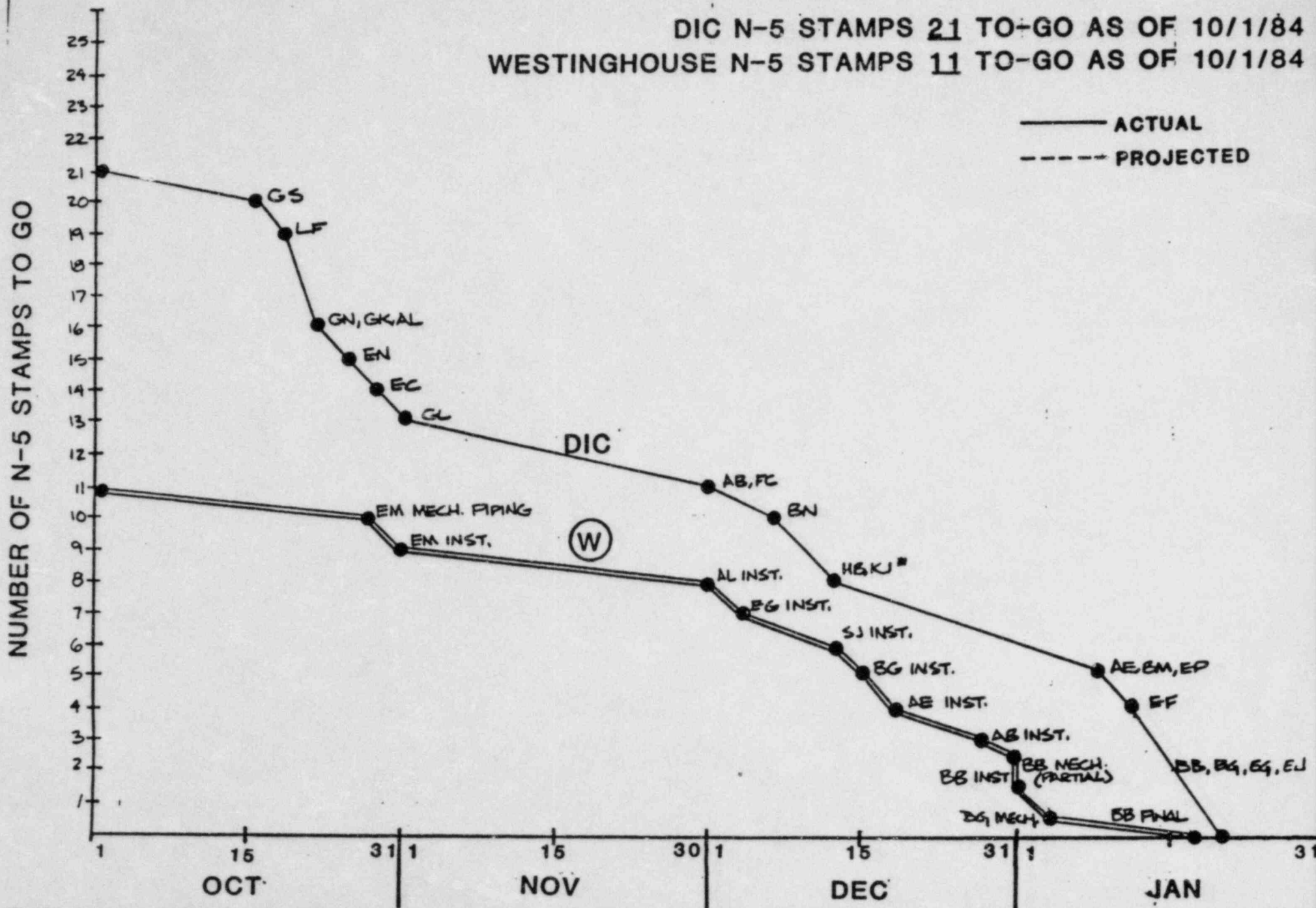
TOTAL PLANT 421

*For technical matters of an immediate nature the respective individual reports directly to the Plant Manager.

Wolf Creek Generating Station
Revised Organization Chart 1-09-85
Supersedes Chart dated 12-06-84

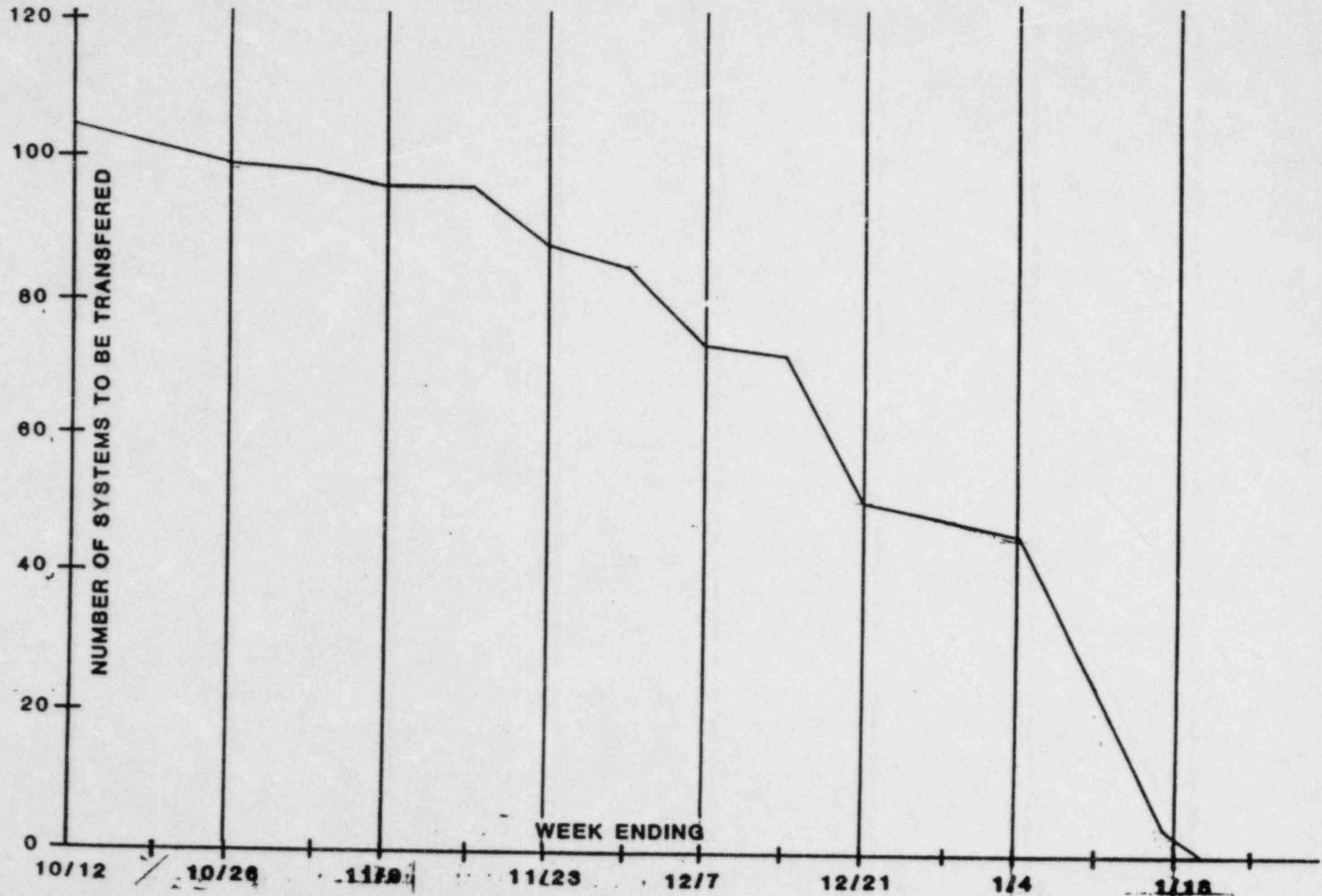
N-5 STAMP PROGRAM COMPLETION

DIC N-5 STAMPS 21 TO-GO AS OF 10/1/84
 WESTINGHOUSE N-5 STAMPS 11 TO-GO AS OF 10/1/84

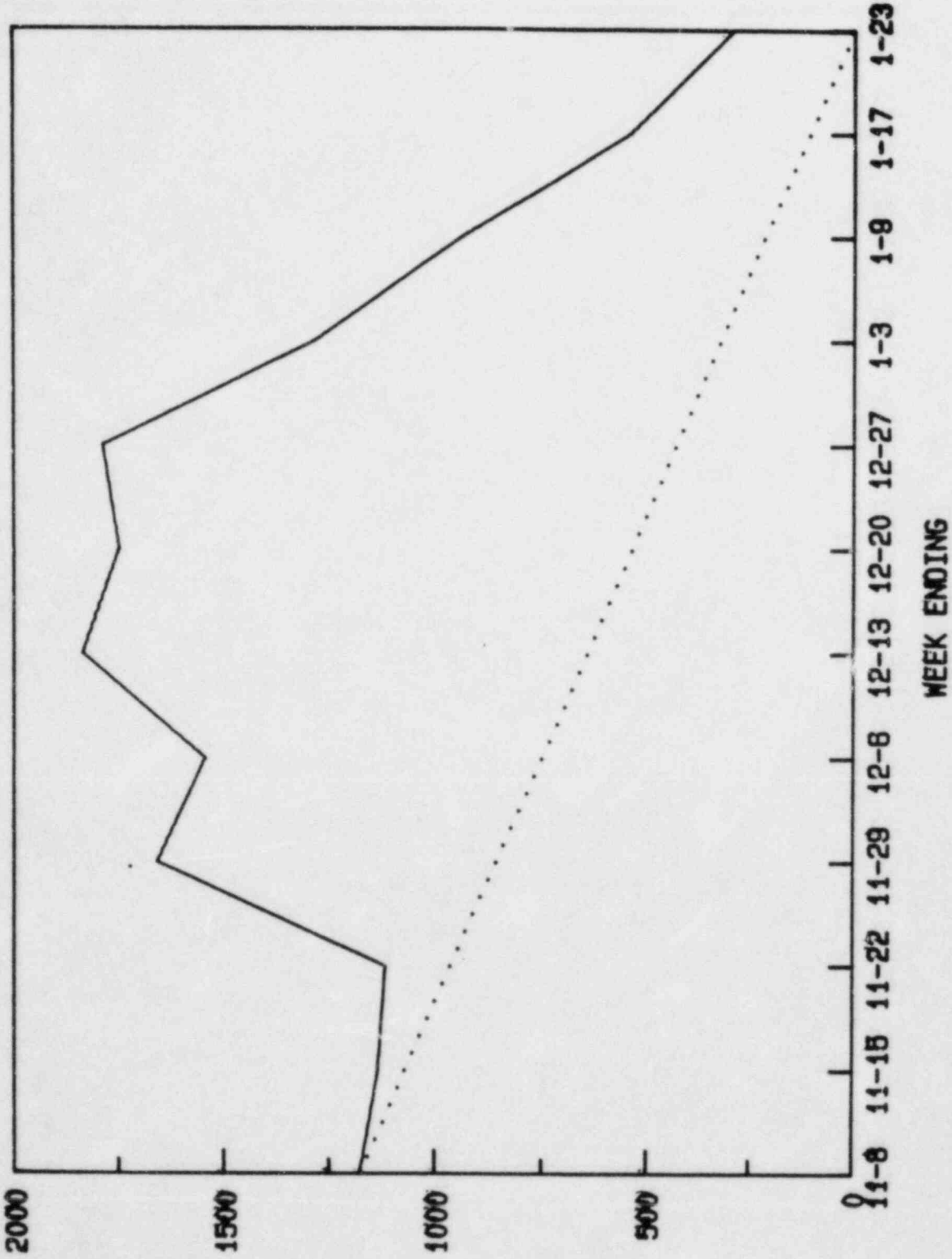


SYSTEM TRANSFER TO OPERATION 10/12/84-1/18/85

— ACTUAL
- - - PROJECTED



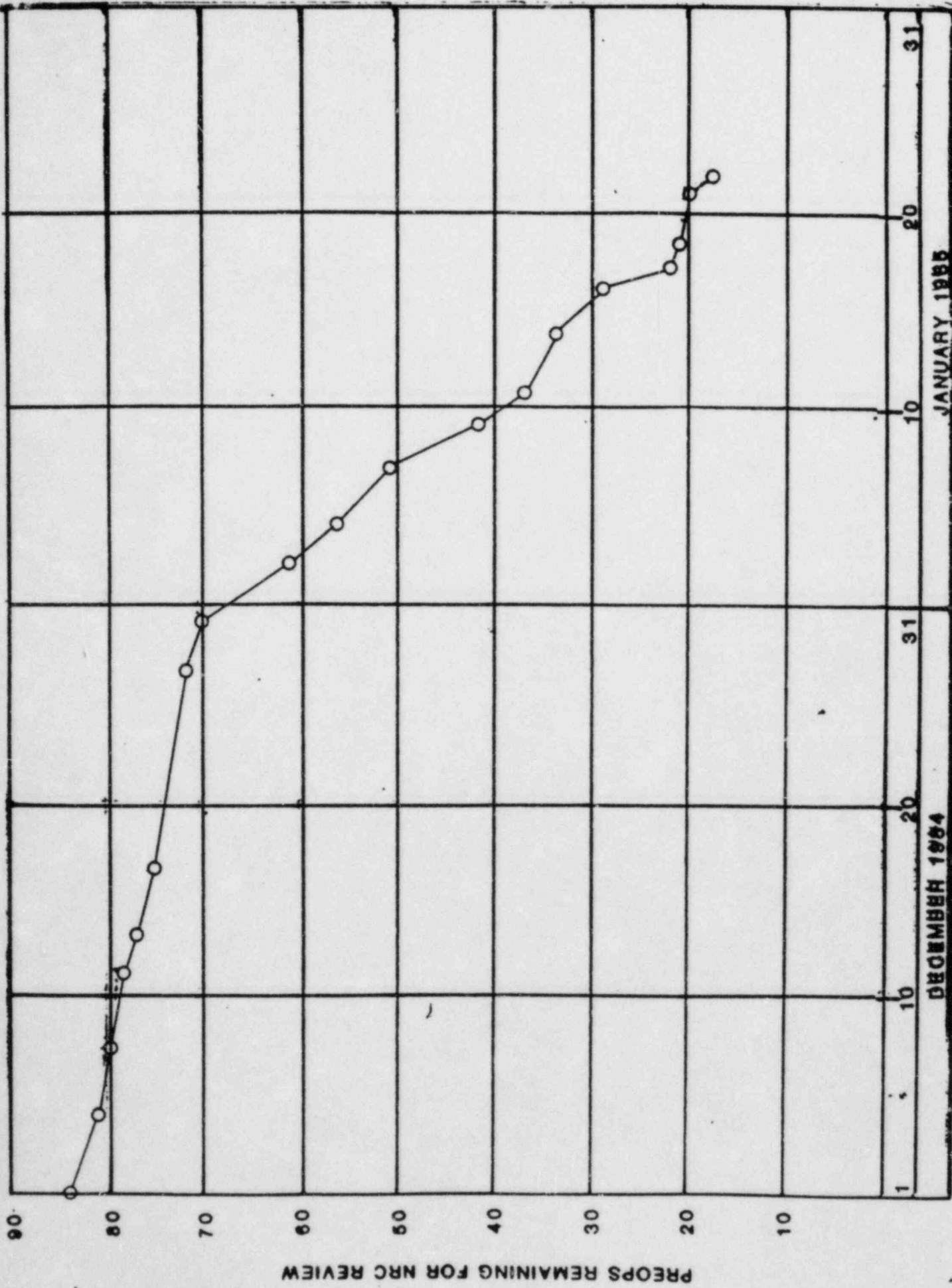
OVERALL PROJECT
FUEL LOAD RESTRAINTS



3 JAN 85

209

PREOPERATIONAL TEST RESULTS APPROVAL



JANUARY 1985

DECEMBER 1984

DATE OF JTO APPROVAL RECOMMENDATION