

①

GRAND GULF NUCLEAR STATION  
TECH SPEC REVIEW PROGRAM  
MARCH 9, 1984

- I. INTRODUCTION
- II. OBJECTIVES
- III. MANAGEMENT CONTROL REQUIREMENTS
- IV. ORGANIZATION
- V. CRITERIA AND SCOPE OF REVIEW
- VI. PROCEDURE FOR REVIEW AND CLOSURE
- VII. SCHEDULE
- VIII. NRC INTERFACE
- IX. SUMMARY

*135 people*  
*7 days-a-week*

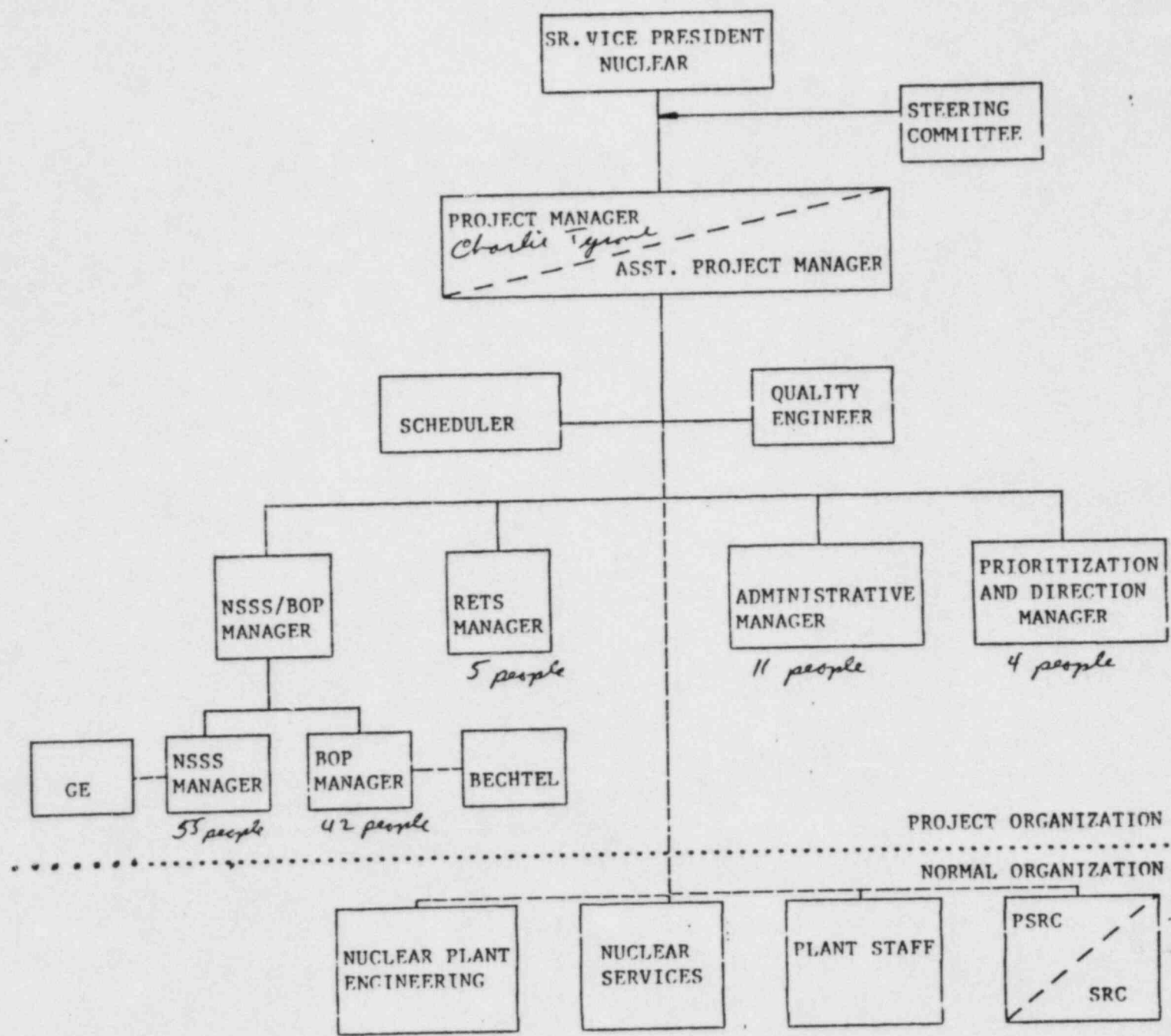
## OBJECTIVES

- VERIFY CONSISTENCY OF TECHNICAL SPECIFICATIONS VERSUS THE PLANT, FSAR AND SER
- IDENTIFY, SUBMIT AND OBTAIN TIMELY ISSUANCE OF CORRECTIONS
- ASSURE ACCURACY AND ADEQUACY OF TECHNICAL SPECIFICATIONS

MANAGEMENT CONTROL REQUIREMENTS

- 0 KEY POSITIONS FILLED BY MP&L EMPLOYEES
- 0 PROJECT MANAGER REPORTS TO SENIOR VICE PRESIDENT-NUCLEAR
- 0 CONTROLLED BY DEFINITIVE, APPROVED PROCEDURES *Region II should audit sometime in future*
- 0 DOCUMENTATION ESTABLISHED TO SUPPORT EACH TECH SPEC SECTION
- 0 AUDITABLE PROGRAM WITH CA AUDITS PERFORMED
- 0 ALL NEEDED RESOURCES TO BE MADE AVAILABLE

ORGANIZATION



———— DIRECT AUTHORITY  
 - - - - COORDINATION AND EXPEDITING

## CRITERIA AND SCOPE OF REVIEW

### SAFETY LIMITS

COMPLETE AND IN ACCORDANCE WITH DESIGN ANALYSIS

### LIMITING CONDITIONS FOR OPERATION (LCO)

REFLECT THE NECESSARY FUNCTIONAL CAPABILITY OR PERFORMANCE LEVEL OF EQUIPMENT REQUIRED FOR SAFE OPERATION BASED ON DESIGN ANALYSES

### ACTION STATEMENTS

VERIFY ACTION STATEMENTS ARE CONSISTENT WITH DESIGN ANALYSES

### SURVEILLANCES

TEST TYPES ADEQUATELY ADDRESS DESIGN REQUIREMENTS AND ALLOW CONSERVATIVE OPERATION DURING TESTING

### BASES

CORRECT AND IN ACCORDANCE WITH DESIGN ANALYSES

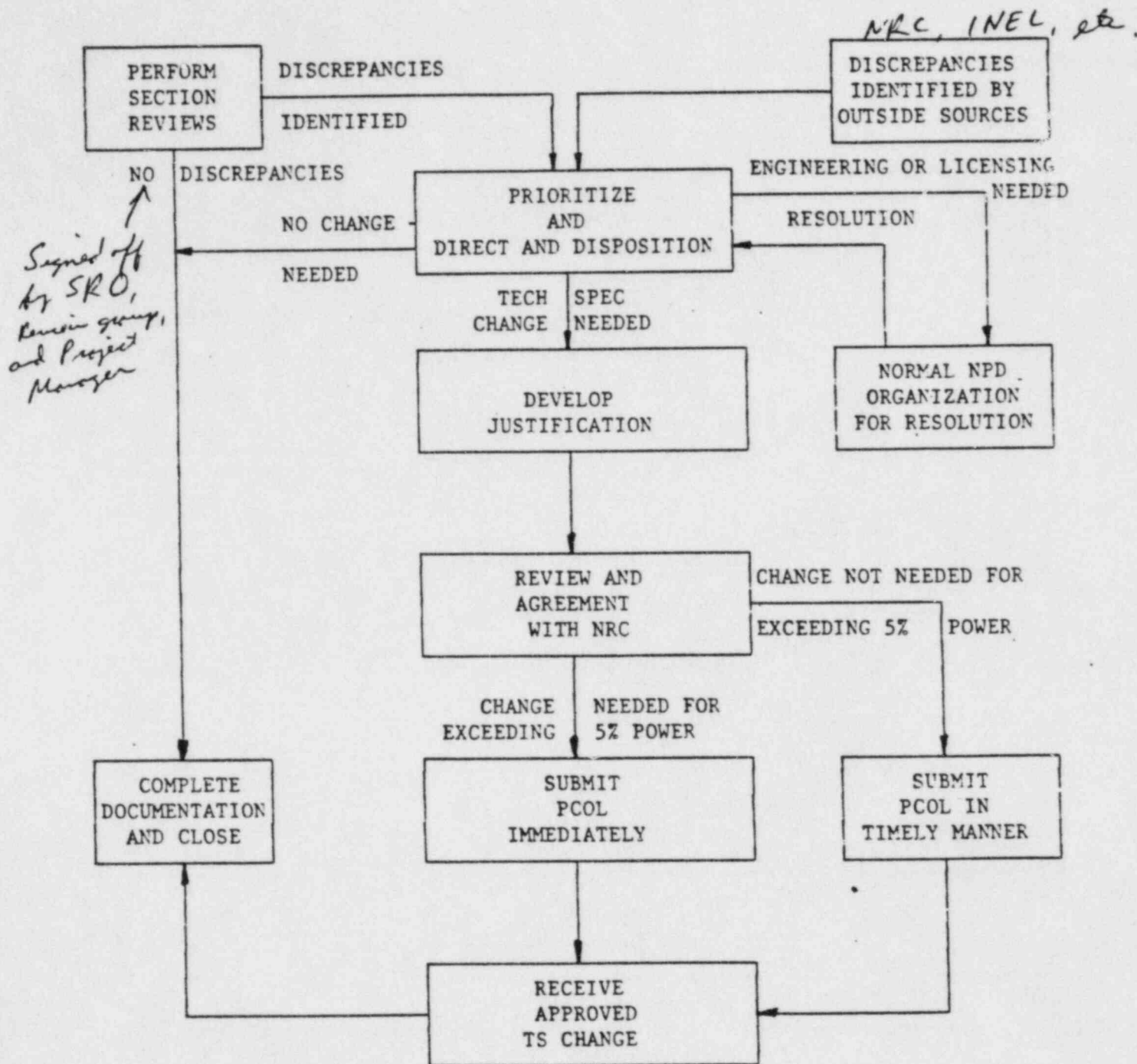
### DESIGN FEATURES

ENSURE DESIGN FEATURES ARE CORRECTLY DESCRIBED

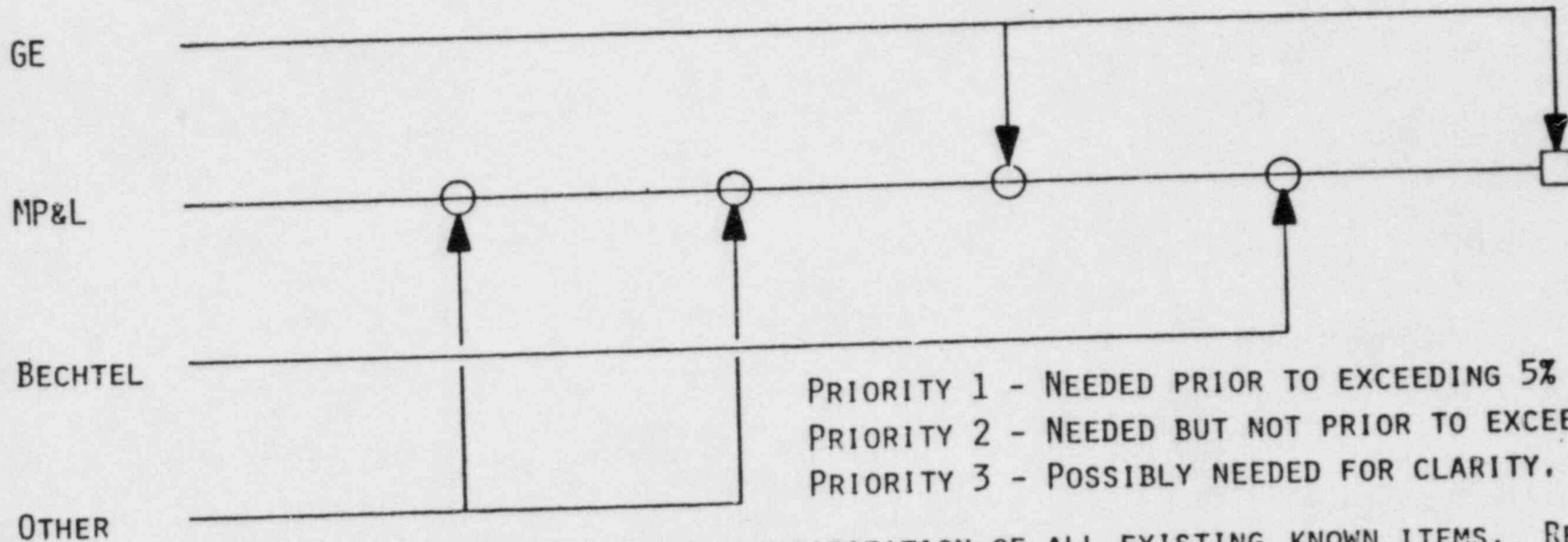
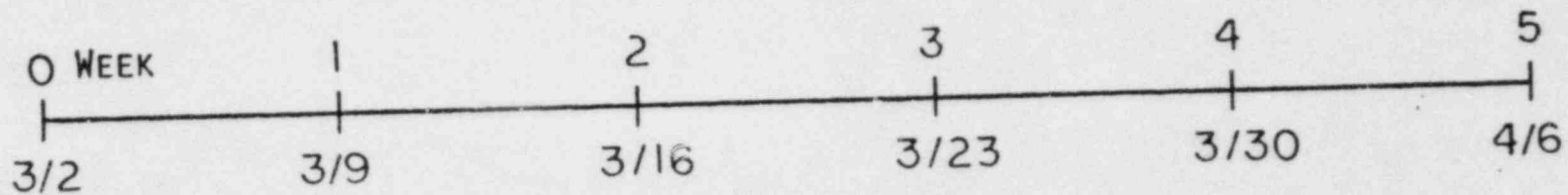
### ADMINISTRATIVE CONTROLS

VERIFY CONSISTENT WITH LICENSING COMMITMENTS

PROCEDURE FOR REVIEW AND CLOSURE



# SCHEDULE



PRIORITY 1 - NEEDED PRIOR TO EXCEEDING 5% POWER.  
 PRIORITY 2 - NEEDED BUT NOT PRIOR TO EXCEEDING 5% POWER.  
 PRIORITY 3 - POSSIBLY NEEDED FOR CLARITY.

WEEK 1 - COMPLETE REVIEW AND PRIORITIZATION OF ALL EXISTING KNOWN ITEMS. RECEIVE RESULTS OF NRC REVIEWS.

WEEK 2 - COMPLETE REVIEW AND PRIORITIZATION OF NRC ITEMS.

WEEK 3 - REVIEW COMPLETE FOR NSSS SCOPE.

WEEK 4 - REVIEW AND RESOLUTIONS COMPLETE FOR BOP SCOPE.

WEEK 5 - RESOLUTION COMPLETE FOR NSSS SCOPE. ALL PRIORITY 1 ITEMS IDENTIFIED AND DISCUSSED WITH NRC. PRIORITY 2 AND 3 ITEMS AGREED UPON WITH NRC.

*Handwritten notes:*  
 ↑ 241 items  
 31 - #1 priority  
 169 - #2 "  
 35 - #3 "  
 6 - approved in Amendment 12

MP&L/NPC INTERFACE

BETHESDA OFFICE (FULL TIME STAFF OF 2)

DAILY WORKING MEETINGS FOR PROBLEM RESOLUTION AND INTERFACE

BRING HIGH PRIORITY ITEMS TO NRC ATTENTION IMMEDIATELY

REGULAR WEEKLY MEETINGS



MP&L/NRC INTERFACE SCHEDULE

TECH SPEC REVIEW MANAGEMENT MEETING	3/9
OBTAIN NRC INPUT	3/9
INEL REVIEW	
NRR PROOF & REVIEW	
REGION II REPORT (WEEK OF 2/20 INSPECTION)	
OTHER INFORMATION	
INITIATE INTERFACE WITH NRR PROJECT MANAGER.	3/13
FIRST REVIEW AND PRIORITIZATION MEETING	3/14 & 15
REGULAR WEEKLY MEETINGS	3/21 & 22
(TENTATIVE SCHEDULE)	3/28 & 29
	4/4 - 6
MP&L CERTIFICATION LETTER	NOT LATER THAN 4/9

## SUMMARY

- 0 MP&L DEDICATED TO A QUALITY AND TIMELY PROGRAM
- 0 COMMITMENT OF SUBSTANTIAL RESOURCES TO SUPPORT PROGRAM
- 0 NEED NRC AVAILABILITY AND SUPPORT
- 0 PROGRAM WILL YIELD ASSURANCE OF ADEQUATE AND ACCURATE  
TECH SPECS TO SUPPORT GGNS OPERATION

*Jackson*

TECHNICAL SPECIFICATION AMENDMENT TRACKING SYSTEM

PUNCHLIST NUMBER	NRC NUMBER	PRIORITY	TECH SPEC NUMBER	DESCRIPTION	ACTION STATUS	IDENT. CODE	SUBMITTAL SCHEDULE	COMMENTS
------------------	------------	----------	------------------	-------------	---------------	-------------	--------------------	----------

*13 items priority*

077	/	4	INDEX	RE-NUMBER INDEX	LIC	MPL		
029	/	3	1.2	TABLE 1.2	PS	MPL - A		
053	/	3	2.1.4	ECCS	PS	MRC - A		IN ORDER TO PERFORM NEXT NON-CORE FRICT TEST, THE CORE SHUT HAS TO BE PLACED IN REFUEL POS. WHILE IN MFC 3.4.
105	13/29	4	5.1.1	UNRESTA AREA MAP	MRC	MPL		MRC REQMS CHANGING SPEC TO REQUIRED INITIATION OF ECCS BEFORE DEPRESSURIZATION, ADD STATEMENT TO P-15 TO EXPLAIN.
104	/	4	6.1.2	SHIFT SUPERINTENDENT	SAF	MPL - A		TYPD IN FIGURE NO.
095	/	4	6.2.1	OFFSITE ORGANIZATION	LIC	MPL - A		CHANGE TITLE FROM SHIFT SUPERINTENDENT TO SHIFT SUPERVISOR.
101	/	4	6.2.2	DOMS UNIT ORGANIZAT.	MRC	MPL		UPDATE FIGURE 6.2.1-1, PAGE 6-3.
052	/	3	6.2.2.F	PLANT SUPERINTENDENT	SAF	MPL - A		REVISES UNIT ORGANIZATION CHART IN CHAPTER 6.
063	/	4	6.2.3.2	COMPOSITION OF ISEG	PS	MRC		CHANGE TITLE OF PLANT SUPERINTENDENT TO PLANT MANAGER
106	13/20	3	6.5.1.	PSRC REVIEWMEMBERS	MRC	MPL		DEV PROC APPROV BY SRI REGARDING IFRM THE DETRS. WILL BE MADE TO ENSURE APPROPRIATE SPECIALIST ARE UTILIZED.
064	/	4	6.5.1.3	PSRC ALTERNATES	PS	MRC	8/15/83	CHANGE TO EXISTING ADMIN REQUIREMENTS & MEMBERSHIP COMPOSIT
065	/	4	6.5.2.3	SRC ALTERNATES	SAF	MRC		ADDRESS QUALIFICATIONS FOR ALTERNATES ON PSRC AND LENGTH OF TIME THEY CAN SERVE
066	/	4	6.5.2.7	SRC DUTIES - ALARA	SAF	MPL - A		ADDRESS QUALIFICATIONS OF SRC ALTERNATES AND LENGTH OF TIME THEY CAN SERVE
073	/	3	6.9.1	REPORTING REQUIREMENT	SAF	MRC		ADD SEMI-ANNUAL REVIEW OF ALARA APPRAISALS TO SRC DUTIES
027	13/30	3	6.10.2	TYPD - REGRD RET SEC	MRC	MPL		CHANGE T.S. REPORTING REQUIREMENTS PURSUANT TO 10CFR50.22.
099	/	4	6.15.1	REPORT CHNGS TO R/W	PS	MRC		CORRECTS REFERENCE TO SHORTER-TABLE IN SECTION A.10.2.1
079	/	3	103/4.3.1	IEEE 279	SAF	MRC - A		CHANGES RECOMMENDED BY MRC, ENCL.3, CAT.2, ITEM 4
								DELETE REFERENCE TO IEEE 279 FROM BASIS REQ ENCL.3

(2)

PAGE NO. 00092 TECHNICAL SPECIFICATIONS SUBMITTED BY TECHNICAL SPECIFICATION

TECHNICAL SPECIFICATION AMENDMENT TRACKING SYSTEM

AMENDMENT NUMBER	DATE	PRIORITY	TECH SPEC NUMBER	DESCRIPTION	ACTION STATUS	IDENT. CODE	SUBMITTAL SCHEDULE	COMMENTS
107	13/14	3	80/4.6.1.7	CONT TO AUX DP	MRC	MPL - A		REF: MFB 82/496
004	/	4	80/4.6.3	SPMU SYSTEM	PS	MPL - A		THERE IS NO MODE SWITCH INTERLOCK WHICH PREVENTS RECEIVING THE MAKE-UP DUMP VALVES AS BASIS IMPLIES.
124	/	3	3/4.1.1.c	SHUTDOWN MARGIN	SAF	LRG		CHANGE TIME CONSTRAINT FROM 1 TO 6 HOURS PER LOG ITEM
014	/	3	3/4.1.3	CONTR ROD OPERABILITY	PS	MPL - A		SURVY REQUIRES ON FINE TEST TO VERIFY PROPER LEVEL SENSOR RESPONSE. NEED MFE SUPPORT TO JUST. UNDER GOING INITIATION.
108	13/27	3	3/4.1.3.2	MAX SCRAM INSR TIME	MRC	MPL - A		AND 3.0.4 EXEMPTION
051	/	3	3/4.1.4.1	TRIP (WITHDRAWAL)	SAF	MPL - A		LONG TERM ITEM. INCREASE CORE FLOW & MAX EXIT OVER DRAIN REQUIRED BY FIRST OUTAGE
048	/	5	3/4.2.2	EXIT CYCLE OPERATION	PS	MPL		CHANGE TO AGREE WITH STS ON AFRM GAIN ADJUSTMENT. CHANGE ACTION STATEMENT TO AGREE WITH THE 4 ITEMS IN THE STS.
049	/	2	3/4.2.2	AFRM GAIN ADJUSTMENT	PS	MPL - A	4/15/84	MRC SUBMITTAL OF PRELIMINARY INFO. THE FR. IS. TECH SPEC CHANGES TO FOLLOW.
004	/	3	3/4.3	GENERIC INSTR PROBL	SAF	MRC - B		SEVERAL TECH SPECS DO NOT HAVE THE SAME INSTR. DENOM'S FOR INSTRUMENTS SHARED BETWEEN RPS, ECTS, CFM, INTRV SYSTEMS
109	13/27	3	3/4.3.1	INSTR WITH DUAL FUNC	MFE	MRC - B		CHANGES ACTION STATEMENT 2 TO CONFORM TO STS
110	13/10	3	3/4.3.2	CONTROL ROD INSERTION	MRC	MPL		M REG 0737 ITEM - GET ACP
111	13/16	3	3/4.3.2	RCIC FLOW INST	MRC	MRC - A		CHANGE SETPOINTS TO AGREE WITH NEW REACTOR CALCULATIONS
112	13/18	3	3/4.3.2	RAD. MON. INSTRUM.	MRC	MPL - A		CHANGE ACTION STATEMENT b & c TO CONFORM TO STS
005	/	3	3/4.3.2	ISOL INSTR CH/TRIP	MRC	MPL - A		TRL 3.3.2-1, SEC 4.8 LISTS MFC AS NO PREVENTING ENTRY INTO AC STAT. 27.
013	/	3	3/4.3.2	RMCU	PS	MPL - A		TABLE 3.3.2-1 LISTS MFCIV CLOSURE ON HI AND MFC AND MFCV ALSO CLOSERS MFCIV. SHOULD BE LISTED IN INITIAL EVALUATION.
015	/	3	3/4.3.2	PSIV ISOLATION	PS	MPL - B		SETPOINT DING MAY BE REQUIRED TO ACCOUNT FOR DYNAMIC PRESS INFLUENCES. AFFECTS SEVERAL SPECS.
037	/	3	3/4.3.2	D/A & CONT PRESS MON	PS	MPL - A		CHANGE CALIBRATION FREQ FOR RILEY TEMP MON. & ROSEBERT RQIP UNITS.

TECHNICAL SPECIFICATION AMENDMENT TRACKING SYSTEM

PROJECT NUMBER	MRC NUMBER	PRIORITY	TECH SPEC NUMBER	DESCRIPTION	ACTION STATUS	TRMNT. CODE	SUBMITTAL SCHEDULE	COMMENTS
103	/	3	3/4.3.2	MFC / MSL HIGH FLOW	SAF	MFL - A		CHANGE TO 8 CHANNELS PER TRIP SYSTEM FOR MFL FLOW HI
113	6/08	2	3/4.3.2.1	LOW COMPENSER VACUUM	MRC	MFL - A		POOL 83/11 PROMOTICED NEEDED BY MODE 2 CHANGE
076	13/06	3	3/4.3.3	ECCS RESP TIME	MRC	MFL - A		CHANGE RESPONSE TIME FROM 45 TO 40 SEC
114	13/21	3	3/4.3.3	SUP? POOL HI LEVEL	MRC	MFL - A3		SECTIONS 3.3.3-2.c.1.e & 3.3.3-2.d
075	13/24	3	3/4.3.3	LPCT PUC DISH PRS HI	MRC	MFL - A		RESUBMITTAL OF 405 PARTIALLY APPROVED IN PARAGR 8
044	/	3	3/4.3.3	LOP DIV 3	PS	BE - A		RECHTEL ENG. COMMENTED THAT CONTRARY TO I.S.S. OFFSHORE POWER TRIPS W/O A TIME DELAY W/EN DIV 3 W/VT. POWER TO "OFF V"
074	/	3	3/4.3.3	UNUSED FOOTNOTES	SAF	MRC		CHECK ALL TABLE AND DELETE UNUSED FOOTNOTES
115	13/07	3	3/4.3.3.1	TYPO	MRC	MFL		PULLED FROM POOL 83/03 BY PSAP RESUBMITTED IN PGC 13
116	13/28	3	3/4.3.3.1	LYNS PMP DISCH HIGH	MRC	MFL		CHANGES CALLER FIRED FROM R TO MONTHLY FOR TRIP UNIT AS IS FOR OTHER DIV 1.2.4.3 TRIP UNITS
071	/	3	3/4.3.3.1	RI MODE SWITCH SURV	PS	MRC - A		ADD REACTOR MODE SWITCH SURVEILLANCE
072	/	3	3/4.3.4.1	ATMS	PS	MFL - A		ACTION STATEMENT APPEARS INADEQUATE FOR GMS DESIGN. PLACING INOP CHAL IN TRIPPED COND CAUSES BEING FOR TRIP.
117	6/07	1	3/4.3.4.2	EOC RPT	MRC	MFL - A	5/13/83	DUPLICATE OF ITEMS 193,447. POOL 83/11 MFC TO GRANT ONE TIME ESTIMATION
047	/	3	3/4.3.4.2.3	EOC RPT	PS	MFL - A		RESPONSE TIME TEST OF TURBINE STOP AND CONTROL VALVES
078	/	3	3/4.3.5	RCIC MIN OP CHANNELS	LIC	MFL - A		CHANGE MFC FOR LEVEL 2 TRIP FROM 2 TO 4
118	13/13	3	3/4.3.6	SRM PROBLECK OPERAP.	MRC	MRC		INTERPRETATION OF SRM "NOT FILL IN" AND IN OP
011	/	3	3/4.3.6	CONTR ROD BLK INSTR	LIC	MFL - A		DELETE NOTE (4). ILM "DETECTOR NOT FILL IN" IS NOT WITH BYPASS WHEN ILM CHANNELS ARE IN RANGE 1. (POOL 83/4)
079	/	4	3/4.3.6	SRM OPERABILITY	PS	MFL - A		AC. STATEMENTS REQUIRE DIFFERENT MFC. OF SRM OPERABLE DURING SOME MODES. AFFECTS MFC. 3.3.6. 3.3.6.1. 3.3.6.2
119	13/05	3	3/4.3.7.1	AREA RAD. MONITOR	MRC	MFL - A	05/16/83	POOL 83/05. PARTIALLY APPROVED IN AMENDMENT 7. RESUBMITTED IN PGC 813.
120	13/02	3	3/4.3.7.1	OFF-GAS P-1 RAD MON	MRC	MFL - A		POOL 83/12. RESUBMITTED IN PGC 13

TECHNICAL SPECIFICATION AMENDMENT TRACKING SYSTEM

ROWLIST NUMBER	MRC NUMBER	PRIORITY	TECH SPEC NUMBER	DESCRIPTION	ACTION STATUS	IDENT. CODE	SUBMITTAL SCHEDULE	COMMENTS
079	/	3	3/A.3.7.2	SEISMIC MONITORING	SAF	MPL - A		REPLACE INSTRUMENTS
077	/	3	3/A.3.7.4	DIV 2 REMOTE SHUTDOWN	PS	MPL - A		ADD SECOND DIVISION OF THE REMOTE SHUTDOWN PANEL
121	14/01	2	3/A.3.7.6	SOX CONCENTRATE	MRC	MPL - A		CHANGES MINIMUM CPS TO 0.3cps
070	/	3	3/A.3.7.7	TIP SYSTEM	PS	MPL - A		T.S. REQUIRES ONLY 3 TIPS, OBTAINABLE WITH 5 AMT. RECOMMEND TO CALIBRATE THE LEADS & MAP THE CORE.
060	/	3	3/A.3.7.7	TIP SURVEILLANCE	PS	MPL - A		DELETE FROM SUR 4.3.7.7 THE WORDS "THE ABOVE APPLICABLE MONITORING OR"
098	/	3	3/A.3.7.8	CHLORINE DETECTORS	LIC	MPL		DELETE CHLORINE DETECTORS FROM CONTROL ROOM AIR INTAKE <i>Do not show ?</i>
073	13/01	3	3/A.3.7.9	FIRE DETECTION INSTR	MRC	MPL - A	6/17/83	POOL 82/14 RESUBMITTED IN PWD 13 RECEIVED PRL.1 CORRECTIONS IN APR 82.
102	/	3	3/A.3.7.9	FIRE DETECT INSTRUM	PS	MPL - A		ADD INSTRUMENTATION PER PWR 82/022R
018	/	5	3/A.3.7.11.b	RAD EFF MONITOR	PS	MPL		NOTIFY TO GET POSITION STATEMENT FROM METR. ORIG. EVENT WAS TO TERMINATE RELEASE. (LONG TERM)
045	/	3	3/A.3.7.12	COOH SETPOINTS	SAF	MPL - A		TABLE 3.3.7.12-1. CHANGE BASIS TO CLARIFY THAT NOT ALL SETPOINTS ARE CALCULATED FROM THE COOH.
122	13/19	3	3/A.3.7.12	RAD MON SYST SURV	MRC	MPL - A		DELETE CHANNEL FUNCTIONAL TEST
073	/	3	3/A.3.8	CONT SPR ACTUAT SETP	MFE	MPL - A		CHANGE CONT SPRAY TIMER SETPOINT & A.V. ACCORDING TO EE SPECS. HOLD PENDING RESOLUTION OF CONT SPR. TIMER ISSUE
064	/	3	3/A.3.8	CONT SPRAY MIN OP CH	SAF	MPL - A		DELETE ITEM 1.6, REV H2O LEVEL LLL LEVEL 1. EVALUATE INCREASING MDC FOR DRYWELL & CONT PRESS FROM 1 TO 2
016	/	3	3/A.3.8	CONT PRESS SETPOINT	PS	MPL - A		CHANGE CONTAINMENT PRESSURE SPRAY ACTIVATION SETPOINTS
093	/	3	3/A.3.8	D/W PR & H2O LVL MDC	PS	MRC - A		CHANGE MIN OP CHALS FROM 1 TO 2 FOR D/W HIGH PRESSURE AND WATER LEVEL LO.
041	/	5	3/A.4.1.1	RECIRC LOOP OPER	PS	MPL - A		LONG TERM PROBLEM
098	/	5	3/A.4.1.1	RECIRC. SYSTEM	PS	MPL		EVALUATE NEED FOR SINGLE LOOP OPERATION. EE HAS ANALYSIS AVAILABLE. (LONG TERM)
024	/	3	3/A.4.1.2	JET PUMP OPERABILITY	PS	MPL - A		AT WHAT POINT IN PUMP ASSEMBLY ARE JET PUMPS REQUIRED TO BE DEMONSTRATED OPERABLE?
042	/	3	3/A.4.1.3	RATED RECIRC FLOW	SAF	MPL - A		TECH SPEC CHANGE ISSUED BY PLANT STAFF <i>?</i>

TECHNICAL SPECIFICATIONS SORTED BY TECHNICAL SPECIFICATION

TECHNICAL SPECIFICATION IMPLEMENT TRACKING SYSTEM

PROJECT NUMBER	MRC NUMBER	PRIORITY	TECH SPEC NUMBER	DESCRIPTION	ACTION STATUS	IDENT. CODE	SUBMITTAL SCHEDULE	COMMENTS
123	13/04	3	3/4.4.1.4	RE VSL STM SPC TEMP	MRC	MPL - A		ACTION STATEMENT MAY BE MORE RESTRICTIVE THAN NECESSARY DUE TO RETURN TRIP SYSTEMS.
	/	3	3/4.4.2.1	SRV	PS	MPL - A		ALSO INVOLVES FSAR PROBLEM POOL 83/13
125	8/01	1	3/4.4.2.2	SRV LOW-LOW SET	MRC	MPL - A		ADDING & CHANGING VALVE NUMBERS ON RCS INTERFERENCE AND TRIP 811 LEAKAGE PRESSURE MONITORS 1" L.E.
028	13/08	3	3/4.4.3.2	RCS INTERFACE TABLE	MRC	MPL - A		SEND INFORMATION ON OUR PLANT SPECIFIC PROBLEM. GENERIC PROBLEM- LRG ATTEMPTING TO RESOLVE
072	/	3	3/4.4.3.2	RCS LEAKAGE	SAF	LRG - A		MRC RECOMMENDS DELETING FOR UP TO 31 DAYS
055	/	3	3/4.4.4.c	31 DAY PROBLEM	SAF	MRC - A		EVALUATE CHANGING SURVAILANCE METHODS FOR MSIV START TIME.
023	/	3	3/4.4.7	MSIV	PS	MPL - A		TO BE INSTALLED 1ST OUTSIDE
099	/	5	3/4.5	ADS PRESS MONITORS	PS	MRC - A		T.S. REQUIRES 7 OPER. ADS VALVES. NOW 4 HAS 9 ADS VALVES. SUPPORT LETTER REQUESTED FROM CE.
001	/	2	3/4.5.1	ADS VALVES	SAF	MPL - A		MRC RECORD CHANGING SPEC TO REQUIRED AN OPERABLE DATE AFTER FROM CST TO SUPPRESSION POOL
054	/	3	3/4.5.1	EDCS - OPERATING	PS	MRC - A		DELETE PER SIS FORMAT
030	/	3	3/4.5.2	HPCS LINE BREAK	SAF	MPL - A	6/10/83	INCONSISTENCY IN TECH SPECS.
126	13/15	3	3/4.5.3.1	SUPP PL OPERABILITY	MRC	MPL - A		4.0.2 CANNOT EXEMPT APPENDIX J REQUIREMENTS. DELETE 4.0.2 EXEMPTION.
057	/	3	3/4.6.1.2	4.0.2 EXEMPTIONS	PS	MRC		ENCLOSURE 1.
067	/	3	3/4.6.1.2	ILRT SURVEILLANCE	PS	MRC		ENCLOSURE 1
048	/	4	3/4.6.1.9	CONT PURGE LCO	PS	MRC		CHANGE TEST FREQUENCY FOR D/W AIR LOCKS
031	/	3	3/4.6.2.3	D/W AIRLOCK	SAF	MPL - A		REF: MFB 92/496
177	13/22	3	3/4.6.2.5	DRYWELL/CONT. TP	MRC	MPL - A		ENCLOSURE 5
051	/	3	3/4.6.3	SUPP POOL SPEC	PS	MRC - A		TYPD. LCO REFERS TO SSU-HEAT EXCHANGER RATHER THAN AIR HEAT EXCHANGER
012	/	4	3/4.6.3.3	TYPD - AIR HEAT EXCH	SAF	MPL - A		CONTAINS RESPONSE TIMES FOR ISOLATION VALVE TABLES.

*B. Bed*

?

TECHNICAL SPECIFICATIONS SORTED BY TECHNICAL SPECIFICATION

TECHNICAL SPECIFICATION AMENDMENT TRACKING SYSTEM

PARA LIST NUMBER	NRC NUMBER	PRIORITY	TECH SPEC NUMBER	DESCRIPTION	ACTION STATUS	EVENT CODE	SUBMITTAL SCHEDULE	COMMENTS
020	/	3	3/4.4.4	CONT & D/W ISOL VALS	SAF	NPL - A		
062	/	3	3/4.6.6	CHARCOAL BED HEATERS	PS	NRC - A		REC'D 12/13/80 COMMITTED TO CHANGE TYPE OF LEAK RATE TEST REQUIRED FOR CERTAIN VALVES. PS INITIATED T.S. CHANGE.
003	/	3	3/4.6.6.3	SOTS	PS	NPL - B		INCREASE CONTINUOUS OPERATING TIME FOR HEATERS PER NRC RECOMMENDATION
128	13/12	3	3/4.6.7	E61-COCS	NRC	NPL	8/10/83	SEC. 4.3.4.8 REFER TO SOTS INITIATION ON PAD - HIGH SIGNAL. THIS SHOULD BE AND - HIGH-HIGH.
069	/	3	3/4.6.7.2.8	H IGNITER SURV	PS	NRC - A		CHANGE REQ. QUOTE COMMITMENT
019	/	3	3/4.6.7.3	D/W PURE FLOWRATE	PS	NPL - A		ENCLOSURE 1
062	/	3	3/4.7.1	SSM AUTO INIT CIRCUIT	PS	NRC - A		SURV 6.1 REQUIRES FLOWRATE VERIFICATION IN CFM RATHER THAN SCFM. SIGNIFICANT????
094	/	3	3/4.7.1	HFCS SERV WATER SURV	PS	NRC		ENCLOSURE 5
129	13/09	3	3/4.7.1.1	SSM OPERABILITY	NRC	NPL - A3		CHANGES REQUESTED BY NRC, ENCL 6
002	/	4	3/4.7.1.2	HFCS (TYPO)	SAF	NPL		PULLED FROM POOL 83/06 TO REWRITE JUSTIFICATION
017	/	3	3/4.7.1.3	ULTIMATE HEAT SINK	PS	NPL - A		TYPO IN 4 FOOTNOTE (HFCS)
064	/	3	3/4.7.3	REC TURB PROT TRIPS	PS	NRC - A		NEED CHANGE TO CLARIFY REQUIREMENT TO START FAN FROM CONTROL ROOM WHEN FAN IS ALREADY OPERATING.
139	13/31	3	3/4.7.4	SHIPPERS	NRC	NPL		ENCLOSURE 5
096	/	4	3/4.7.4	SHIPPERS	PS	NRC		NEW SECTION 11 SHIPPERS TO BE ADDED
021	/	3	3/4.7.4	NEW SHIPPERS	SAF	NPL - A		NRC RECOMMENDED REPLACING EXISTING SPEC WITH NEW LRD SPEC
130	3/04	3	3/4.7.6.1	DIESEL FIRE PMP BATT	NRC	NPL A		DESIGN/REVISED PER DEP 82/546. NEED TO ADD TO T.S. LIST
070	/	3	3/4.7.6.1	FIRE SUPPLY H2O SYST	PS	NRC		POOL 83/06
071	/	4	3/4.7.6.2	SPEC REPORTING REGRIT	SAF	NRC		ENCLOSURE 2
072	/	3	3/4.7.6.2	VISUAL INSPECTION	PS	NRC		DELETE SPECIAL REPORTING REQUIREMENT
131	13/23	3	3/4.7.6.5	ADDS HOSE STATIONS	NRC	NPL - A		ADD VISUAL INSPECTION OF HOSE STATION AREA
100	/	3	3/4.7.8	ESF ELEC RM MAX TEMP	SAF	NPL - A		ADDS HOSE STATIONS PER DESIGN CHANGE TO TABLE 3.7.4.5-1
						RECH		RECHITEL WAS GENERATED IN 0500 FROM CHANGE TO THE NIT PHILD. ESF ELEC RM. MAX TEMP FROM 104 F TO 90 F.



TECHNICAL SPECIFICATION AMENDMENT TRACKING SYSTEM

PROJLIST NUMBER	MRC NUMBER	PRIORITY	TECH SPEC NUMBER	DESCRIPTION	ACTION STATUS	IDENT. CODE	SUBMITTAL SCHEDULE	COMMENTS
132	13/30	4	3/4.7.8	AREA TEMP MON TABLE	MRC	MFL - A		RELETES EQUIPMENT OPERATING COLUMN PER SIS FORMAT INCLUDES ITEM 8026, CONTR ROOM TEMP
058	/	4	3/4.7.9	SMT FUEL STOR TEMP	PS	MRC		DETERMINE APPLICABILITY AND NECESSITY OF SPEC & TEST ACTION ACCORDINGLY
133	13/03	1	3/4.7.10	SLOPE STABILITY	MRC	MRC		SLOPE STABILITY SPEC FOR CULVERT #1 PARTIALLY APPROVED IN AMEND. R & RESUBMITTED IN FIG 17.
059	/	3	3/4.7.10	EMBANKMENT STABILITY	SAF	MRC		REWRITE SPEC ACCORDING TO MRC MARK-UP
007	/	4	3/4.8.1	D/G AIR START	PS	MRC - A		EVALUATE RETENTION OF D/G 5 START TEST FOR LOW RECEIVING POPS
134	13/26	3	3/4.8.1.1	TYPO	MRC	MFL		CORRECT & NOTATION, SECTION 2.4.9
043	/	3	3/4.8.1.1.2	D/G FUEL OIL PMP ST	SAF	MFL - A		D/G SURV 4.8.1.1.2.a.3 APPEARS TO BE RETURNED TO SERV. 4.8.1.1.2.d.14
026	/	4	3/4.8.1.1.2	ELECTRICAL	SAF	MFL		ASTM-D270-1975 SHOULD BE ASTM-D270-1965(REAPPROVED 1999)
141	/	3	3/4.8.1.1.2	D/G TEST CRITERIA	PS	MFL - A		EVALUATE TABLE 4.8.1.1.2-1 AGAINST R.G. 1.109, SECTION C.2.A.9.
142	/	5	3/4.8.1.1.2	D/G FAST STARTS	PS	MFL		DEVELOP ANALYSIS TO JUSTIFY DELETING FAST START PIECE LIST REQUIRED BY SURV. 4.8.1.1.2.a.4.
060	13/11	3	3/4.8.1.2	A/C SOURCES - SHUT DAM	MRC	MRC - A		EVALUATE AGAINST MRC RECOMMENDED CHANGE
135	6/06	2	3/4.8.2.1	DC LOAD PROFILE	MRC	MFL - A		IDENTIFIED PCOL 8/3/11
136	13/25	3	3/4.8.4.2	CORRECT VALVE NOS.	MRC	MFL - A		CORRECT 2 VALVE NOS IN FRIN & SEC CONT. ISOL TABLE
061	/	4	3/4.8.4.2	THERMAL OVERLOADS	SAF	MRC		CHANGE PER MRC MARK-UP
137	6/12	3	3/4.8.4.2.1a	MON THERMAL OVERLOAD	MRC	MFL - A	6/ 1/83	PREVIOUSLY DENIED BUT NOW WILL BE APPROVED PCOL 8/3/11
025	4/17	3	3/4.9.6	FUEL HANDLING EQUIP	MRC	MFL - A		PCOL 8/3/09 ONE INFROM TO MRC
046	/	3	3/4.9.11.1	AIR SHUTDOWN	PS	MFL - A		EVALUATE CHANGE TO ALLOW SHUTDOWN RE PAIR PENDING WORK & WITH HEAD OFF.
097	/	4	3/4.11.1.2	DOSE CALCULATIONS	PS	MRC		CHANGES REQUESTED BY MRC, ENCL 3, CAT. 1, ITEM 1
067	/	4	3/4.11.1.3.2	LID/GAS RINSE & VENT	PS	MRC		CHANGES RECOMMENDED BY MRC ENCL 3, CAT. 2, ITEM 1

TECHNICAL SPECIFICATIONS SORTED BY TECHNICAL SPECIFICATION

TECHNICAL SPECIFICATION ASSIGNMENT TRACKING SYSTEM

PROJECT NUMBER	MRC NUMBER	PRIORITY	TECH SPEC NUMBER	DESCRIPTION	ACTION STATUS	IDENT. CODE	SUBMITTAL SCHEDULE	COMMENTS
138	/	5	3/4.11.2	CRAB SAMPLES	LIC	MPL - A		SENT TO LICENSING 9-13-83.
087	/	4	3/4.11.2.1	RAD GAS WASTE SAMPLE	PS	MRC		CHANGES RECOMMENDED BY MRC, ENCL 3, CAT. 2, ITEM 3
085	/	4	3/4.11.3	SOLID RADWAST	PS	MRC		CHANGES RECOMMENDED BY MRC, ENCL 3, CAT. 2, ITEM 1
090	/	4	3/4.11.4	TOTAL DOSE	PS	MRC		CHANGES REQUESTED BY MRC, ENCL 3, CAT. 1, ITEM 2
036	/	3	3/4.12	ENVIRONMENTAL SPECS	LIC	MRC - A		ORIGINATED BY ODS, ENVIRONMENTAL SERVICES
091	/	4	3/4.12.2	TYPO (CENSUS)	LIC	MRC		CHANGES REQUESTED BY MRC, ENCL 3, CAT. 1, ITEM 6
092	/	4	3/4.12.3	INTER-AP COMP PROD	PS	MRC		CHANGES REQUESTED BY MRC, ENCL 3, CAT. 1, ITEM 7



# Nuclear Information and Resource Service

1346 Connecticut Avenue NW, 4th Floor, Washington, D.C. 20036 (202) 296-7552

June 1, 1984

James M. Felton, Director  
Division of Rules and Records  
Office of Administration  
U.S. Nuclear Regulatory Commission  
Washington, D.C. 20555

FREEDOM OF INFORMATION  
ACT REQUEST  
FOIA-84-459  
Rec'd 6-5-84

FREEDOM OF INFORMATION ACT REQUEST

Dear Mr. Felton:

Pursuant to the Freedom of Information Act, 5 U.S.C. 522, as amended, the Nuclear Information and Resource Service requests the following documents regarding the Grand Gulf nuclear plant. Please consider "documents" to include reports, studies, test results, correspondence, memoranda, meeting notes, meeting minutes, working papers, graphs, charts, diagrams, notes and summaries of conversations and interviews, computer records, and any other forms of written communication, including internal NRC Staff memoranda. The documents are specifically requested from, but not limited to, the Office of Inspection and Enforcement (I&E); Office of the Executive Legal Director (OELD); Office of Analysis and Evaluation of Operational Data (AEOD); Office of Nuclear Regulatory Research (Research); Office of Nuclear Reactor Regulation (NRR); Generic Issues Branch of the Division of Safety Technology, NRR; Office of the General Counsel (OGC); and the Operating Reactors Branches of the Division of Licensing. In your response, please identify which documents correspond to which requests below.

Pursuant to this request, please provide all documents prepared or utilized by, in the possession of, or routed through the NRC related to:

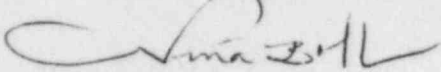
1. Operation of the Grand Gulf nuclear power reactor produced since January 1, 1984, including operation with the Transamerica Delaval Inc. diesel generators; and
2. The Transamerica Delaval Inc. diesel generators in use at the Grand Gulf nuclear power plant.

In our opinion, it is appropriate in this case for you to waive copying and search charges, pursuant to 5 U.S.C. 552(a)(4)(A) "because furnishing the information can be considered as primarily benefiting the general public." The

~~8501180237~~

Nuclear Information and Resource Service is a non-profit organization serving local organizations concerned about nuclear power and providing information to the general public.

Sincerely,

A handwritten signature in cursive script, appearing to read "Nina Bell".

Nina Bell  
Nuclear Safety Analyst

cc: File