



UNITED STATES  
NUCLEAR REGULATORY COMMISSION  
WASHINGTON, D. C. 20555

VERMONT YANKEE NUCLEAR POWER CORPORATION

DOCKET NO. 50-271

VERMONT YANKEE NUCLEAR POWER STATION

AMENDMENT TO FACILITY OPERATING LICENSE

Amendment No. 87  
License No. DPR-28

1. The Nuclear Regulatory Commission (the Commission) has found that:
  - A. The application for amendment by Vermont Yankee Nuclear Power Corporation (the licensee) dated January 15, 1985, complies with the standards and requirements of the Atomic Energy Act of 1954, as amended (the Act) and the Commission's rules and regulations set forth in 10 CFR Chapter I;
  - B. The facility will operate in conformity with the application, the provisions of the Act, and the rules and regulations of the Commission;
  - C. There is reasonable assurance (i) that the activities authorized by this amendment can be conducted without endangering the health and safety of the public, and (ii) that such activities will be conducted in compliance with the Commission's regulations;
  - D. The issuance of this amendment will not be inimical to the common defense and security or to the health and safety of the public; and
  - E. The issuance of this amendment is in accordance with 10 CFR Part 51 of the Commission's regulations and all applicable requirements have been satisfied.
2. Accordingly, the license is amended by changes to the Technical Specifications as indicated in the attachment to this license amendment, and paragraph 2.C.(2) of Facility Operating License No. DPR-28 is hereby amended to read as follows:

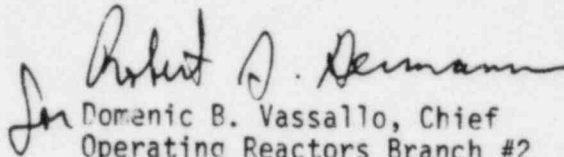
8504160637 850401  
PDR ADOCK 05000271  
P PDR

(2) Technical Specifications

The Technical Specifications contained in Appendix A, as revised through Amendment No. 87, are hereby incorporated in the license. The licensee shall operate the facility in accordance with the Technical Specifications.

3. This license amendment is effective as of the date of its issuance.

FOR THE NUCLEAR REGULATORY COMMISSION



Domenic B. Vassallo, Chief  
Operating Reactors Branch #2  
Division of Licensing

Attachment:  
Changes to the Technical  
Specifications

Date of Issuance: April 1, 1985

ATTACHMENT TO LICENSE AMENDMENT NO. 87

FACILITY OPERATING LICENSE NO. DPR-28

DOCKET NO. 50-271

Revise the Technical Specifications as follows:

<u>Remove</u>	<u>Insert</u>
190	190
190-a	190-a
192	192
193	193

VYNPS

6.0 ADMINISTRATIVE CONTROLS

Administrative controls are the written rules, orders, instructions, procedures, policies, practices, and the designation of authorities and responsibilities by the management to obtain assurance of safety and quality of operation and maintenance of a nuclear power reactor. These controls shall be adhered to.

6.1 ORGANIZATION

- A. The Plant Manager has on-site responsibility for the safety and efficient operation of the facility. Succession to this responsibility during his absence shall be delegated in writing.
- B. The portion of the corporate management which relates to the operation of this plant is shown in Figure 6.1.1.
- C. In all matters relating to the operation of the plant and to those Technical Specifications, the Plant Manager shall report to and be directly responsible to the Manager of Operations.
- D. Conduct of operations of the plant is shown in Figure 6.1.2 and will be in accordance with the following minimum conditions (see Table 6.1.1).
  1. A licensed Senior Operator and an individual qualified in radiation protection procedures shall be present on-site at all times when there is fuel in the reactor.
  2. Licensed Operators on-site shall be in accordance with Table 6.1.1, one of which must be in the Control Room at all times when fuel is in the reactor.
  3. A licensed Senior Operator shall be in charge of any refueling operation.
  4. Qualifications with regard to educational background experience, and technical specialities of the key supervisory personnel listed below shall apply and be maintained in accordance with the levels described in the American National Standards Institute N18.1-1971, "Selection and Training of Personnel for Nuclear Power Plants".
    - a. Plant Manager
    - b. Operations Superintendent
    - c. Technical Services Superintendent
    - d. Maintenance Superintendent
    - e. Chemistry and Health Physics Supervisor
    - f. Operations Supervisor (see Item D.7, Page 190a)
    - g. Reactor and Computer Supervisor
    - h. Maintenance Supervisor
    - i. Instrument and Control Supervisor
    - j. Shift Supervisors

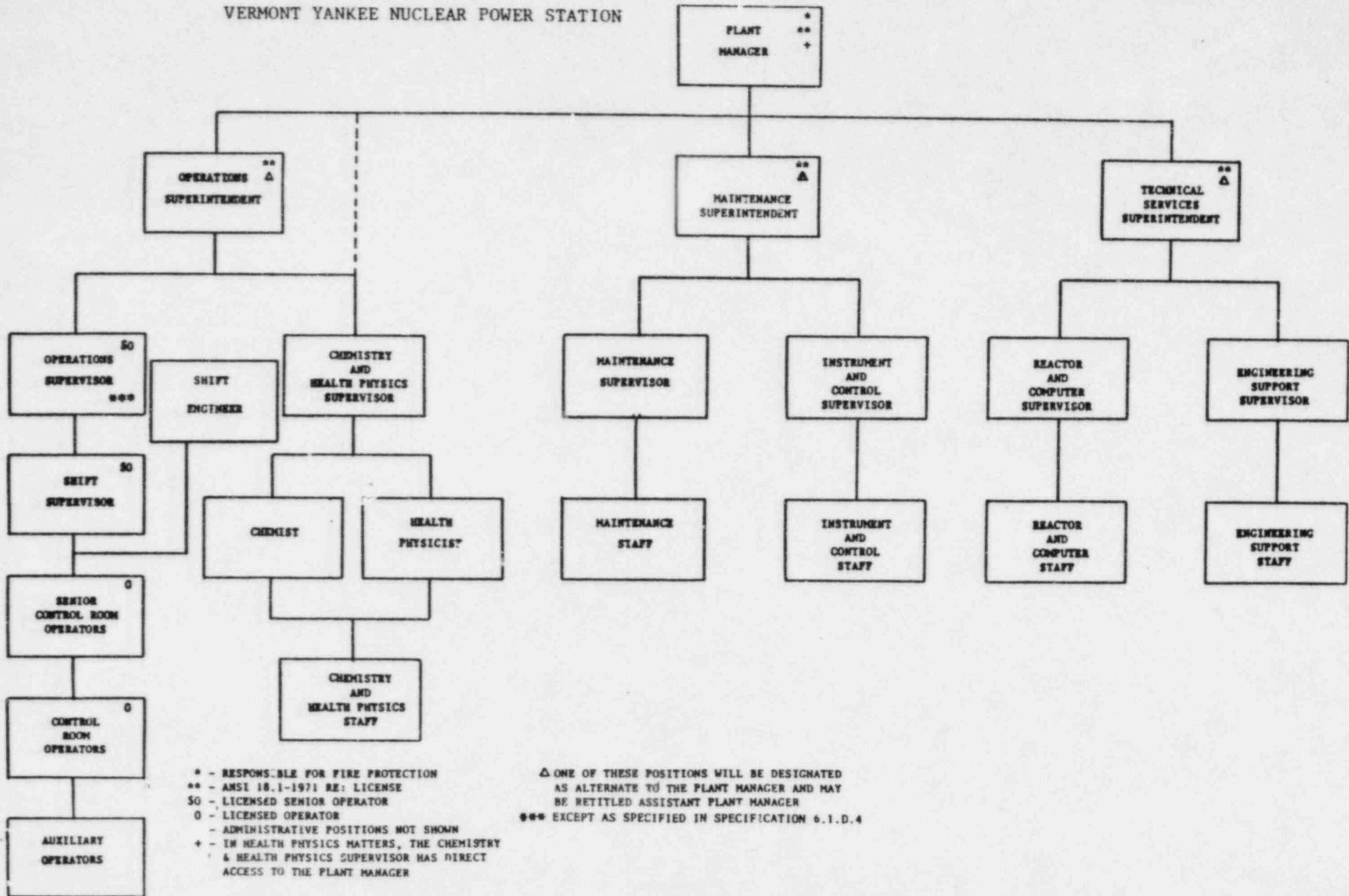
VYNPS

5. The Plant Health Physicist shall meet or exceed the qualifications of Regulatory Guide 1.8, Revision 1 (September 1975).
  6. The Shift Technical Advisor shall have a bachelor's degree or equivalent in a scientific or engineering discipline with specific training in plant design, and response and analysis of the plant for transients and accidents.
  7. If the Operations Supervisor does not possess a Senior Operator License, then an Assistant Operations Supervisor shall be designated that does possess a Senior Operator License. All instructions to the shift crews involving licensed activities shall then be approved by the designated Assistant Operations Supervisor.
- E. A Fire Brigade of at least 5 members shall be maintained on-site at all times. # This excludes 2 members of the minimum shift crew necessary for safe shutdown of the plant and any personnel required for other essential functions during a fire emergency.

---

#Fire Brigade composition may be less than the minimum requirements for a period of time not to exceed 2 hours in order to accommodate unexpected absence of Fire Brigade members provided immediate action is taken to restore the Fire Brigade to within the minimum requirements.

VERMONT YANKEE NUCLEAR POWER STATION



Organizational Chart

VYNPS

TABLE 6.1.1

Vermont Yankee staff positions that shall be filled by personnel holding Senior Operator and Operator Licenses are indicated in the following table:

<u>Title</u>	<u>License</u>
Operations Supervisor	Senior Operator (Except as specified in Specification 6.1.D.4)
Shift Supervisor	Senior Operator
Supervisory Control Room Operator	Operator
Control Room Operator	Operator

<u>MINIMUM SHIFT CREW PERSONNEL &amp; LICENSE REQUIREMENTS</u>	<u>Conditions</u>		
	<u>Normal Operation</u>	<u>Plant Startup</u>	<u>Cold Shutdown</u>
Shift Supervisor	(1)	(1)	-
Supervisory Control Room Operator	(1)	(1)	(1)
Control Room Operator	(1)	(1)	(1)
Auxiliary Operator	(2)	(2)	(1)
Shift Engineer	(1)	(1)	-
Senior Operators License	(1)	(1)	(1)
Operators License	(2)	(2)	(1)