

Official

50-321

MAR 13 1985

Georgia Power Company  
ATTN: Mr. R. J. Kelly  
Executive Vice President  
P. O. Box 4545  
Atlanta, GA 30302

Gentlemen:

Enclosed for your information is an updated Region II Organization Chart which reflects various recent personnel changes within the Region.

Should you have any questions regarding this matter, please contact Mr. Kerry Landis, Chief, Technical Support Staff, Division of Reactor Projects.

Sincerely,

ORIGINAL SIGNED BY  
DAVID M. VERRELLI

Roger D. Walker, Director  
Division of Reactor Projects

Enclosure:  
Region II Organization Chart

cc w/encl:

- J. T. Beckham, Vice President and  
General Manager-Nuclear Operation
- H. C. Nix, Site General Manager, Hatch
- P. E. Fornel, Site QA Supervisor, Hatch
- L. Gucwa, Chief, Nuclear Engineer,  
Hatch
- D. O. Foster, Vice President and  
General Manager - Construction, Vogtle
- H. H. Gregory, III, General Manager -  
Construction, Vogtle
- G. Bockhold, Jr., General Manager -  
Operations, Vogtle
- C. W. Hayes, QA Manager, Vogtle

bcc w/encl:

- NRC Resident Inspector - Hatch,  
Vogtle
- Document Control Desk  
State of Georgia  
Hugh S. Jordan, Executive Secretary  
E. Reise, ELD

RII  
*DGruber*  
DGruber:saj  
3/17/85

RII  
*DPrice*  
DPrice  
3/17/85

RII  
*KLandis*  
KLandis  
3/17/85

8504160108 850313  
PDR ADOCK 05000321  
H PDR

11  
IE31

OFFICE OF THE ADMINISTRATOR	
Administrator	J. Nelson Grace
Dep. Admin.	John A. Olshinski

Technical Asst.	Frank Long
-----------------	------------

Secretary	Hellan Matlett
-----------	----------------

Secretary	Nancy Hughey
-----------	--------------

Public Affairs Staff	
Director	K. Clark
PA Off.	J. Gilliland
Recept.	B. Wituka

Regional Counsel	
Regional Counsel	B. Jones

State and Government Staff	
Director	R. Trojanowski
	R. Woodruff
Clerk-Typist	V. Gousha

Enforcement and Investigation Coordination Staff	
Director (Acting)	J. Puckett
	G. Troup
	L. Trocine
	B. Uryc
	J. Lankford
	G. Reid, Off. Asst.

Division of Reactor Projects	
Dir.	R. Walker

Division of Reactor Safety	
Dir.	P. Remis

Division of Radiation Safety and Safeguards	
Dir.	J. Stohr

Division of Resource Management and Administration	
Dir.	R. Maley

Office of (*) Investigations	
Dir.	J. Vorse

Investigators  
 L. Williamson  
 B. Burch  
 D. Murphy  
 L. Robinson  
 (Sec. Cathy Cochran)

(\*) NOTE: Physically located in RII but not a part of RII organizational structure.

*8504150109*

DIVISION OF REACTOR PROJECTS  
Director R. Walker  
Dep. Director Vacant

Secretary R. Gann

Office Asst. L. Stratton

Technical Support Staff  
Chief K. Landis

Reactor Engineer  
D. Price

Reactor Inspector  
J. Rausch  
T. MacArthur  
D. Gruber

Reactor Projects Branch No. 1  
Chief D. Verrelli

Projects Section 1A  
Chief S. Weise

Projects Section 1B  
Chief F. Cantrell

Projects Section 1C  
Chief P. Fredrickson

Reactor Projects Branch No. 2  
Chief V. Brownlee

Projects Section 2A  
Chief H. Dance

Projects Section 2B  
Chief V. Panciera

Projects Section 2C  
Chief S. Flrod

Projects Section 2D  
Chief M. Sinkule

REACTOR PROJECTS BRANCH NO. 1

Chief D. Verrelli

Reactor Engineer G. Pick

Secretary D. Mattox

Office Asst. S. Jones

Projects Section 1A

Chief S. Weise

Project Engineer  
A. Ignatonis (Actg.)

Resident Inspectors

Watts Bar - M. Shymlock\*  
W. Holland  
C. Caldwell  
(Sec. S. Tuck)

Bellefonte - J. York\*  
K. Jenison\*  
W. Bearden  
(Sec. E. Conort)

Sequoyah - E. Ford\*  
L. Watson  
(Sec. G. Mulkey)

Projects Section 1B

Chief F. Cantrell

Project Engineer  
W. Ruland

Resident Inspectors

Browns Ferry - G. Paulk\*  
C. Patterson  
C. Brooks  
(Sec. J. Weaver)

Farley - W. Bradford\*  
B. Bonser  
(Sec. S. Paul)

Summer - W. Hehl\*  
Vacant  
(Sec. D. Curtiss)

Projects Section 1C

Chief P. Fredrickson

Project Engineer  
A. Hardin

Resident Inspectors

Brunswick - D. Myers\*  
L. Garner  
T. Hicks  
(Sec. G. Marshall)

Shearon Harris - G. Maxwell\*  
R. Prevatte\*  
(Sec. S. Phillips)

Robinson - H. Krug\*  
H. Whitcomb  
(Sec. Vacant)

\*Senior Resident Inspector

REACTOR PROJECTS BRANCH NO. 2  
 Chief V. Brownlee

Reactor Engineer P. Moore      Secretary J. Kirby  
 Reactor Engineer S. NINH      Office Asst. J. Drake

Projects Section 2A  
 Chief H. Dance

Project Engineer  
 C. Burger

Resident Inspectors  
 Oconee - J. Bryant\*  
           K. Sasser  
           L. King  
           (Sec. M. Jordan)  
 McGuire - W. Orders\*  
           R. Pierson  
           (Sec. E. Gabriel)  
 Catawba - K. VanDoorn\*  
           P. Skinner\*  
           (Sec. J. Powell)

Projects Section 2B  
 Chief V. Panciera

Project Engineer  
 R. Carroll

Resident Inspectors  
 Crystal River - T. Stetka\*  
                   J. Tedrow  
                   (Sec. A. Titus)  
 Hatch - P. Holmes-Ray\*  
           Vacant  
           (Sec. E. Dyal)  
 Grand Gulf - R. Butcher\*  
                   J. Caldwell  
                   (Sec. M. Strawberry)

Projects Section 2C  
 Chief S. Elrod

Project Engineer  
 K. Jenison, Actg.

Resident Inspectors  
 North Anna - M. Branch\*  
                   J. Luehman  
                   (Sec. C. Smith)  
 Surry - D. Burke\*  
           M. Davis  
           (Sec. K. Lippard)  
 Turkey Point - T. Peebles\*  
                   D. Brewer  
 St. Lucie - R. Crlenjak\*  
                   H. Bibb  
                   (Sec. P. Krause)

Projects Section 2D  
 Chief M. Sinkule

Project Engineer  
 W. Rankin, Actg.

Resident Inspectors  
 Vogtle - J. Rogge\*  
           W. Sanders\*  
           R. Schepens  
           (Sec. M. Wheeler)

\*Senior Resident Inspector

DIVISION OF REACTOR SAFETY  
Director P. Bemis

Technical Asst. W. Hill

Secretary A. Woodley

Office Asst.

Engineering Branch  
Chief A. Herdt

Test Programs  
Section  
Chief F. Jape

Plant Systems  
Section  
Chief T. Conlon

Materials and  
Processes Section  
Chief J. Blake

Operations Branch  
Chief A. Gibson

Quality Assurance  
Programs Section  
Chief C. Upright

Operator Licensing  
Section  
Chief B. Wilson

Operational Programs  
Section  
Chief C. Julian

ENGINEERING BRANCH  
Chief A. Herdt

Reactor Engineer T. McEthiney

Secretary L. Slack

Reactor Engineer J. Macdonald

Office Asst. A. Harper

Office Asst. P. Jones

Test Program Section  
Chief F. Jape

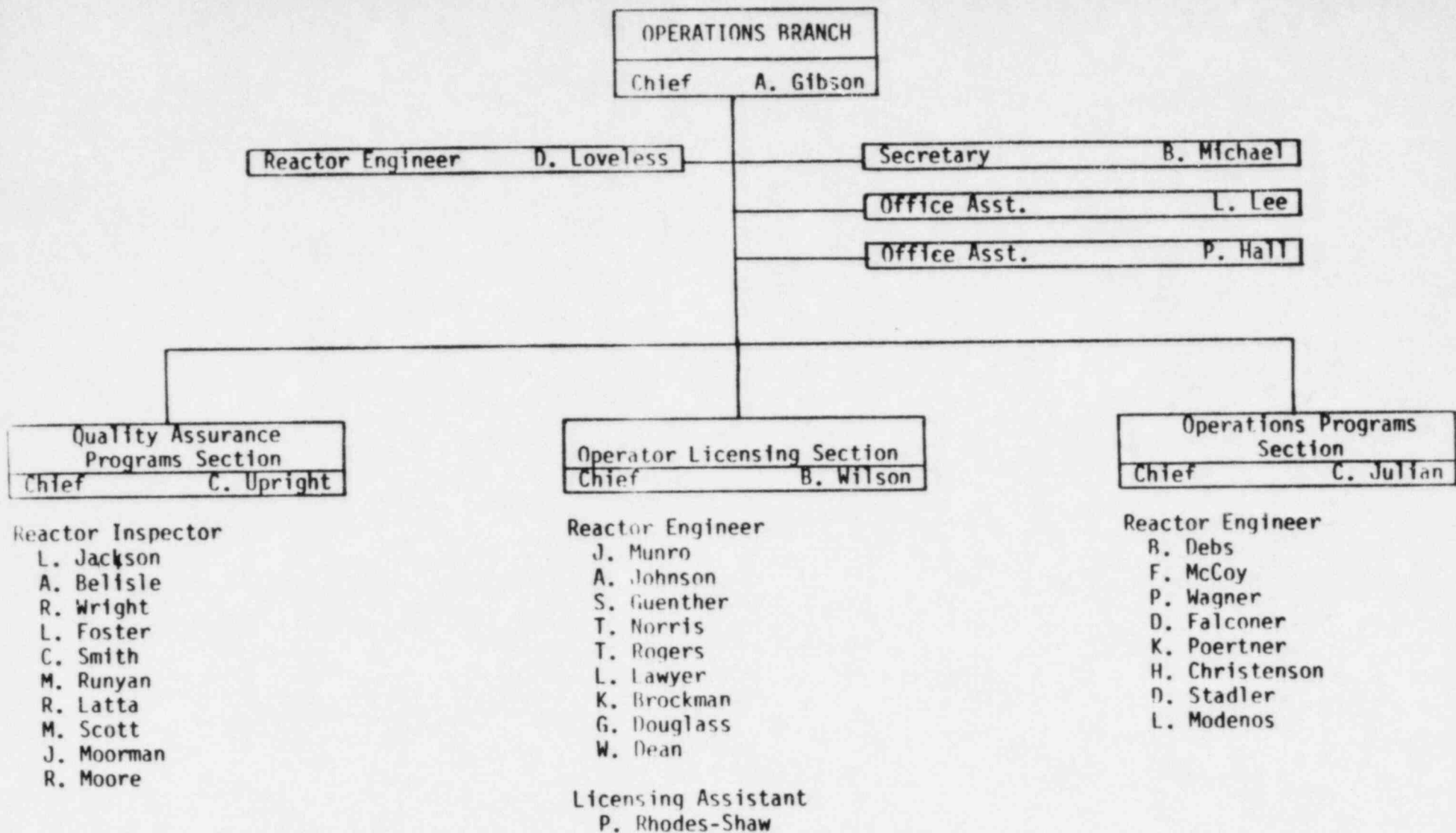
Plant Systems Section  
Chief T. Conlon

Materials and Processes Section  
Chief J. Blake

- Reactor Inspector
- P. Burnett
  - H. Whitener
  - P. Taylor
  - J. Lenahan
  - G. Neifelt
  - M. Thomas
  - G. Schnebli
  - L. Mellen
  - J. Mathis
  - S. Burris
  - K. Van Dyne

- Reactor Inspector
- W. Miller
  - J. Harris
  - A. Ruff
  - M. Hunt
  - T. Gibbons
  - N. Merriweather
  - G. Wiseman
  - P. Madden

- Reactor Inspectors
- N. Economos
  - E. Girard
  - B. Crowley
  - W. Kleinsorge
  - W. Ang
  - W. Ross
  - J. Coley
  - W. Liu
  - R. Newsome
  - G. Hallstrom
  - S. Vias





DIVISION OF RADIATION SAFETY  
AND SAFEGUARDS

Director

P. Stohr

Secretary

P. Miles

Office Asst.

Vacant

Emergency Preparedness and  
Radiological Protection Branch  
Chief D. Collins

Facilities Radiation  
Protection Section  
Chief G. Jenkins

Independent Measurements  
and Environmental  
Protection Section  
Chief D. Montgomery

Emergency Preparedness  
Section  
Chief W. Cline

Nuclear Materials Safety and  
Safeguards Branch  
Chief K. Barr

Nuclear Materials  
Safety Section  
Chief J. Potter

Material Control and  
Accountability Section  
Chief E. McAlpine

Physical Security  
Section  
Chief D. McGuire

EMERGENCY PREPAREDNESS AND  
RADIOLOGICAL PROTECTION BRANCH

Chief D. Collins

Secretary L. Stadler

Office Asst. E. Stewart

Facilities Radiation  
Protection Section  
Chief G. Jenkins

Senior Radiation Specialist  
C. Hosey  
R. Albright

Radiation Specialist (HP)  
R. Weddington  
W. Peery  
T. Collins  
W. Cooper  
B. Revsin  
T. Lee

Independent Measurements and  
Environmental Protection Section  
Chief D. Montgomery

Senior Radiation Specialist (HP)  
P. Stoddart

Radiation Specialist (HP)  
J. Harris  
G. Kuzo  
S. Adamovitz  
B. Gloersen

Radiation Technician  
P. McPhail

Emergency Preparedness Section  
Chief W. Cline

Senior Radiation Specialist (EP)  
A. Cunningham  
T. Decker

Radiation Specialist (EP)  
J. Kreh  
R. Marston  
W. Sartor  
M. Poston-Brown  
A. Gooden

Emergency Preparedness Coordinator  
W. Stansberry

Emergency Preparedness Assistant  
C. Banks

NUCLEAR MATERIALS SAFETY  
AND SAFEGUARDS BRANCH

Chief K. Barr

Secretary H. Allen

Safeguards Off. Asst. V. Handy

Office Asst. N. Witt

Nuclear Materials  
Safety Section

Chief J. Potter

Senior Radiation Specialist (HP) -  
Licensing  
P. Guinn

Radiation Specialist (HP) -  
Licensing  
E. Wright

Senior Radiation Specialist (HP) -  
Inspection  
P. Chambless

Radiation Specialist (HP) -  
Inspection  
R. Brown  
L. Franklin  
C. Connell

Licensing Assistant  
D. Heim

Material Control and  
Accountability Section

Chief E. McAlpine

Mathematical Statistician  
D. Jones

Safeguards Chemist  
J. Bates

Quality Inspection Specialist  
E. Clay

Safeguards Auditor  
G. Todd

Fuel Facilities Resident  
Inspector (Nuc. Engr.)  
T. Lee - NFS

Fuel Facilities Project Manager/  
Inspector  
J. Kahle

Resident Clerical Aide  
J. Lowe

Physical Security Section

Chief D. McGuire

Physical Security Specialist  
D. Moore  
C. Perny  
A. Tillman  
W. Tobin  
J. Ennis

**DIVISION OF RESOURCE  
MANAGEMENT AND ADMINISTRATION**  
Director R. Maley

Secretary M. Hawkes

**Resource Management Branch**  
Chief T. Loy

- Sr. Travel Clerk  
A. Pell
- Travel Clerks -  
J. Hooper,  
D. Britt  
S. Cooper
- Budget Analyst  
J. Hunter
- Procurement Agent  
J. Mosley
- Supply Clerk  
P. Patterson
- Clerk-Typist  
D. Dennis

**Administrative Management Branch**  
Chief J. Lankford, Actg

**Office Services Section**  
Chief T. Harrison  
Records Assistant  
E. Scott

- File Clerks  
C. Howell-Bellete  
L. Holloway  
C. Burris

- Mail Clerks  
V. Collins  
K. O'Melia

**Word Processing Section**  
Chief E. Walthour  
Sr. Word Processing  
H. Turner  
E. Sherman  
D. Riley

- Word Processing Opr.  
B. Greene  
S. Adams  
C. Gilliam  
J. Wheeler  
K. Malone  
L. Brown

**Information Management Section**  
Chief J. Coleman  
Computer Assistant  
C. Calloway  
P. Jones

\*Contract employees  
assigned to this  
section

**Personnel Staff**  
Personnel Off. Vacant

- Personnel Assistant  
G. Hughey
- Personnel Clerks  
P. Taylor  
C. Byrd
- Employee Development Spec.  
L. Millines
- (Part-time & Student  
Personnel)