

## LICENSEE EVENT REPORT (LER)

FACILITY NAME (1) CRYSTAL RIVER UNIT 3										DOCKET NUMBER (2) 0 5 0 0 0 3 0 2										PAGE (3) 1 OF 02		
TITLE (4) AUXILIARY BUILDING EXHAUST FANS OUT OF SERVICE FOR MAINTENANCE																						
EVENT DATE (5)			LER NUMBER (6)				REPORT DATE (7)			OTHER FACILITIES INVOLVED (8)												
MONTH	DAY	YEAR	YEAR	SEQUENTIAL NUMBER	REVISION NUMBER	MONTH	DAY	YEAR	FACILITY NAMES N/A						DOCKET NUMBER(S) 0 5 0 0 0							
0	2	1	2	8	5	8	5	-	0	0	1	-	0	0	0	3	2	2	8	5	N/A	0 5 0 0 0
OPERATING MODE (9)		THIS REPORT IS SUBMITTED PURSUANT TO THE REQUIREMENTS OF 10 CFR 5: (Check one or more of the following) (11)																				
1		20.402(b)				20.406(c)				50.73(a)(2)(iv)				73.71(b)								
POWER LEVEL (10)		0 6 6				20.406(a)(1)(i)				50.36(e)(1)				50.73(a)(2)(v)				73.71(e)				
		20.406(a)(1)(ii)				50.36(e)(2)				50.73(a)(2)(vi)				<input checked="" type="checkbox"/> OTHER (Specify in Abstract below and in Text, NRC Form 306A)								
		20.406(a)(1)(iii)				50.73(a)(2)(i)				50.73(a)(2)(vii)(A)				Voluntary								
		20.406(a)(1)(iv)				50.73(a)(2)(ii)				50.73(a)(2)(vii)(B)												
		20.406(a)(1)(v)				50.73(a)(2)(iii)				50.73(a)(2)(x)												
LICENSEE CONTACT FOR THIS LER (12)																						
NAME W. K. Bandhauer, Nuclear Safety Supervisor										TELEPHONE NUMBER AREA CODE 9 0 4 7 9 5 - 6 4 8 6												
COMPLETE ONE LINE FOR EACH COMPONENT FAILURE DESCRIBED IN THIS REPORT (13)																						
CAUSE	SYSTEM	COMPONENT	MANUFACTURER	REPORTABLE TO NPROS		CAUSE	SYSTEM	COMPONENT	MANUFACTURER	REPORTABLE TO NPROS												
SUPPLEMENTAL REPORT EXPECTED (14)										EXPECTED SUBMISSION DATE (15)				MONTH	DAY	YEAR						
<input type="checkbox"/> YES (If yes, complete EXPECTED SUBMISSION DATE)										<input checked="" type="checkbox"/> NO												

ABSTRACT (Limit to 1400 spaces, i.e., approximately fifteen single-space typewritten lines) (16)

On February 12, 1985, the Auxiliary Building Exhaust Fans were taken out of service in order to perform modifications to the ventilation system dampers. Technical Specification 3.7.8.1 requires two independent pairs of exhaust fans be operable. With both pairs of exhaust fans out of service, the limiting condition as specified in Technical Specification 3.7.8.1 was not met and Technical Specification 3.0.3 was entered.

This evolution is non-reportable since Technical Specification 3.0.3 was entered voluntarily for maintenance purposes and exited prior to being required to place the plant in HOT STANDBY. A voluntary report is being submitted to document the use of Technical Specification 3.0.3 for maintenance activities.

8504030091 850322  
PDR ADOCK 05000302  
S PDR

## LICENSEE EVENT REPORT (LER) TEXT CONTINUATION

APPROVED OMB NO. 3150-0104

EXPIRES: 8/31/85

FACILITY NAME (1)  CRYSTAL RIVER UNIT 3	DOCKET NUMBER (2)  0 5 0 0 0 3 0 2	LER NUMBER (6)			PAGE (3)		
		YEAR	SEQUENTIAL NUMBER	REVISION NUMBER			
		8 5	- 0 0 1	- 0 0	0 2	OF	0 2

TEXT (If more space is required, use additional NRC Form 366A's) (17)

EVENT DESCRIPTION

On February 12, 1985 at 0903, the Auxiliary Building Exhaust Fans (VF, FAN) were taken out of service in order to install a blank-off plate (FB) on the exhaust duct for filter bank AHFL-2C (VF, FLT). The purpose of the blank-off plate was to allow the exhaust damper for the filter bank to be replaced. The blank-off plate was installed and the exhaust fans restarted 0953 on February 12, 1985.

The evolution was carefully planned and staged in order to minimize the time period the fans were secured and, hence, minimize the time period that Technical Specifications 3.0.3 was in effect.

SAFETY CONSIDERATIONS

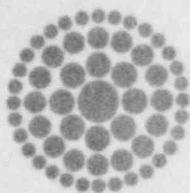
The exhaust fans provide a negative pressure within the Auxiliary Building relative to areas outside the building. This assures all leakage of air will be into the building and all discharges will be filtered and monitored through the exhaust filter and fan system. For the controlled evolution reported here, the supply and exhaust fans were secured, leaving unpressurized release through building openings as the only release path. All doors to the Auxiliary Building were closed prior to securing the fans, thus restricting the release path. The potential release for the evolution was judged to be well below the release limits and reporting limits.

CORRECTIVE ACTION

A revision to the action statement of Technical Specification 3.7.8.1 which will allow for maintenance has been submitted and is pending approval. No further corrective action is deemed necessary.

PREVIOUS SIMILAR EVENTS

All four Auxiliary Building Exhaust Fans were reported inoperable on four previous occasions. Two of these occasions were due to unplanned equipment failures and two were due to planned maintenance similar to that included in this report.



**Florida  
Power**  
CORPORATION

March 22, 1985  
3F0385-20

Document Control Desk  
U.S. Nuclear Regulation Commission  
Washington, DC 20555

Subject: Crystal River Unit 3  
Docket No. 50-302  
Operating License No. DPR-72  
Licensee Event Report No. 85-001-00

Dear Sir:

Enclosed is Licensee Event Report (LER) No. 85-001-00 which is submitted voluntarily by Florida Power Corporation.

Should there be any questions, please contact this office.

Sincerely,

G. R. Westafer  
Manager, Nuclear Operations  
Licensing and Fuel Management

AEF/feb

Enclosure

cc: Dr. J. Nelson Grace  
Regional Administrator, Region II  
Office of Inspection & Enforcement  
U.S. Nuclear Regulatory Commission  
101 Marietta Street N.W., Suite 2900  
Atlanta, GA 30323

IE22  
1/1