

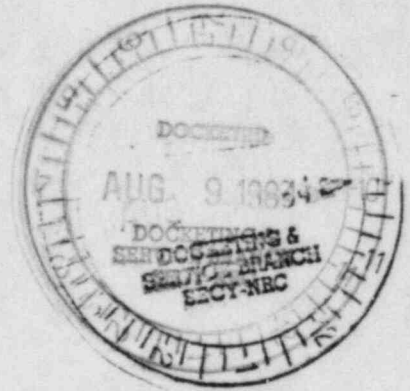
50-413/4140L

I-Joint-46  
5/23/84 EXHIBIT F

INTERVENERS EP-46

CHARLOTTE-MECKLENBURG  
EMERGENCY MANAGEMENT OFFICE

Charlotte, North Carolina



CITY OF CHARLOTTE  
PROTECTIVE RESPONSE PLAN  
FOR  
ALL HAZARDS  
1982

U. S. NUCLEAR REGULATORY COMMISSION  
EXHIBIT No. EP-46  
Applicant \_\_\_\_\_ Staff \_\_\_\_\_ Intervenor X  
Identified X Received X Rejected \_\_\_\_\_  
Date: 5.23.84  
Reporter: Burns

841 290015 840523  
PDR ADOCK 05000413  
PDR



T A B L E O F C O N T E N T S

CITY OF CHARLOTTE  
PROTECTIVE RESPONSE PLAN FOR ALL HAZARDS

<u>Para- graph No.</u>	<u>Subject</u>	<u>Page No.</u>
I.	General Situation.....	1
II.	Special Situation..... (See also Figure 1 shown as page 2)	1
III.	Purpose.....	1
IV.	Authorities and References.....	1
V.	Organization.....	3
VI.	Concept of Operations.....	3
VII.	Warning.....	4
VIII.	Responsibilities.....	5
IX.	Records.....	7
X.	Direction and Control.....	7
ANNEXES		
Annex A -	Emergency Organization Chart, City of Charlotte.....	A-1
Annex B -	Emergency Organization Chart, North Carolina State Emergency Response Team.....	B-1
	- Abbreviations and Acronyms.....	B-2
Annex C -	Checklist for Reporting (Message Form).....	C-1
Annex D -	North Carolina Hazardous Materials Notification Chart.....	D-1
Annex E -	North Carolina Guide for Hazardous Materials.....	E-1
Annex F -	Operating Procedure.....	F-1
Annex G -	Shelter List.....	G-1
Annex H -	Operations Map (Map of Voting Precincts).....	Inserted

CITY OF CHARLOTTE  
PROTECTIVE RESPONSE PLAN FOR ALL HAZARDS

- I. GENERAL SITUATION. The City of Charlotte is subject to a number of hazardous situations that could occur at any time and might require protective actions including evacuation of people from potentially unsafe areas to safe areas. Below are categories of incidents with listings of typical causes of hazardous situations:
- A. Transportation. Plane crash, railroad accident, truck wreck with hazardous materials aboard including spent nuclear fuels or other radioactive materials.
  - B. Industry. Fire, explosion, pesticide, petroleum, chemicals, other hazardous materials, and problems at nuclear power plants.
  - C. Weather. Floods, tornadoes, tropical storms, winter storms.
- II. SPECIAL SITUATION. There are sites of nuclear power plants in or near Mecklenburg County that lie some miles away from the city limits of Charlotte. In event problems requiring protective public action arise at the nuclear power plant sites, first response for public safety necessarily will be undertaken by officials of Mecklenburg County, in order for people who live and work in Mecklenburg County near nuclear plants to be protected from danger of radiation. Should such danger spread (or be forecast as likely to spread) into areas of the City of Charlotte, then, in consonance with principles of good management, officials of Mecklenburg County will continue to direct responses, extending their management of the emergency into the City of Charlotte throughout endangered areas within the city limits. The North Carolina State government plans to take over the direction of response to problems at nuclear power plants as soon as they can set up their Emergency Operating Center in the area. Charlotte and Mecklenburg County governments will have only support responsibility after the State assumes control.
- Recommended protective actions for problems at nuclear power plants and conditions under which actions are to be taken are shown in Figure 1, as page 2.
- III. PURPOSE. This planning document presents a system of protective actions to be undertaken in event of hazards which threaten lives or property of people in the City of Charlotte.
- IV. AUTHORITIES AND REFERENCES.
- A. Chapter 166A, N. C. General Statutes.



- B. Resolution of Charlotte City Council adopted October 7, 1953.
- C. N. C. Hazardous Materials Emergency Response Plan.
- D. U. S. Department of Transportation, Hazardous Materials 1980 Emergency Response Guidebook, DOT P5800.2.

V. ORGANIZATION.

- A. Local. City of Charlotte Organization Chart - See Annex A.
- B. State. North Carolina Emergency Response Team Organization Chart - See Annex B.

VI. CONCEPT OF OPERATIONS. This plan calls for:

- A. Prompt reporting of hazardous or potentially hazardous situations, by City of Charlotte emergency services personnel (or other personnel at the scene of the emergency), which pose threats to lives and property of people in the city. See Annex C - Checklist for Reporting Hazardous Materials Incidents or Requesting Assistance. Also see Annex D - N. C. Hazardous Materials Notification Chart.
- B. Notification of the Mecklenburg County Environmental Health Department.
- C. Early identification of hazards and assessment of potential effects that would be hazardous to people. See Annex E - N. C. Guide for Hazardous Materials, paragraphs 1 and 2, - Hazard Identification, Hazard Assessment, and Protective Action.
- D. Judicious selection of protective action options ranging on one hand from remaining in place to full scale evacuation of a portion of the city on the other hand. See Figure 1 on foregoing page and Annex E, paragraph 3.
- E. Early application of option for evacuation protective actions, zone by zone, if evacuation is judged to be a likely action. See Annex F - Operating Procedure, and Annex H - Map of Evacuation Zones (i.e. latest voting precinct map of Charlotte).
- F. Identification of lodging spaces and locations for evacuees. See Annex G - Shelter List.
- G. Notification of American Red Cross and Mecklenburg County Social Services Department if shelters are to be activated.
- H. Coordination of return movement of evacuees to domiciles when hazards have passed.

alert the public, using an announcement similar to that in 2. above.

6. Take any other actions that will help to get the attention of the public.
- B. Transmission of information and instructions over radio and television will be accomplished by activating the Emergency Broadcast System (EBS), as follows, in the Charlotte EBS operational area.
1. Request for activation of EBS is to be directed to the manager of radio station WEZC-FM in Charlotte (104.7 on the FM dial).
  2. The station manager of WEZC-FM will implement "alert and notification" procedures that have been prescribed for this purpose by the Federal Communications Commission.
  3. When alert and notification procedures have been completed, all radio and television stations will receive from radio station WEZC-FM warning and emergency instructions to be rebroadcast throughout the operational area.
- C. It is essential that the instructions bearing upon the emergency at hand be passed to broadcasters before alerting the public to tune in for information and instructions.

#### VIII. RESPONSIBILITIES.

##### A. Emergency Management Office

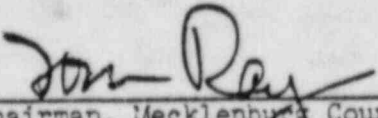
1. Prepare and maintain emergency response plans.
2. Conduct training courses in radiological monitoring and shelter management as required.
3. Provide radiation detection instruments for monitoring and decontamination operations.
4. Maintain liaison with federal, state, and county governments.
5. If or when the state government assumes command and control of response activities, assist the State Emergency Response Team in accomplishing tasks.

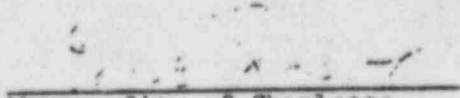
##### B. Fire Department.

1. Maintain an alerting list; alert appropriate officials, agencies and departments.
2. Patrol affected areas; warn people to listen to their radios and television sets for emergency information.

4. Schedule news briefings.
  5. Assist news media in resolving conflicting information.
  6. Prepare and distribute in timely manner to officials and department heads facsimiles of news releases.
  7. Coordinate with the Mecklenburg County Public Service and Information Office if the hazard is caused by problems at a nuclear power plant.
- G. All departments are assigned the following general tasks:
1. Provide manpower, equipment and facilities.
  2. Develop and maintain departmental plans, procedures, and alerting lists for supporting City of Charlotte Response Plan.
  3. Plan and provide for safety of employees and protection of city property in the event of an emergency.
  4. Train personnel assigned for emergency tasks.
  5. Participate in exercises to test emergency plans and procedures.
  6. Provide for record keeping and documentation of actions taken.
- IX. RECORDS. Agencies involved in responding to hazardous situations should maintain detailed records to support claims against carriers, shippers, or facility operators, and to substantiate requests made through state and federal programs for recovery assistance.
- X. DIRECTION AND CONTROL. The highest ranking fire or police official initially on the scene in respective jurisdictions is to be in charge; ranking fire official, if the operation is basically a fire and rescue mission; the ranking police official, if it is basically a police emergency.

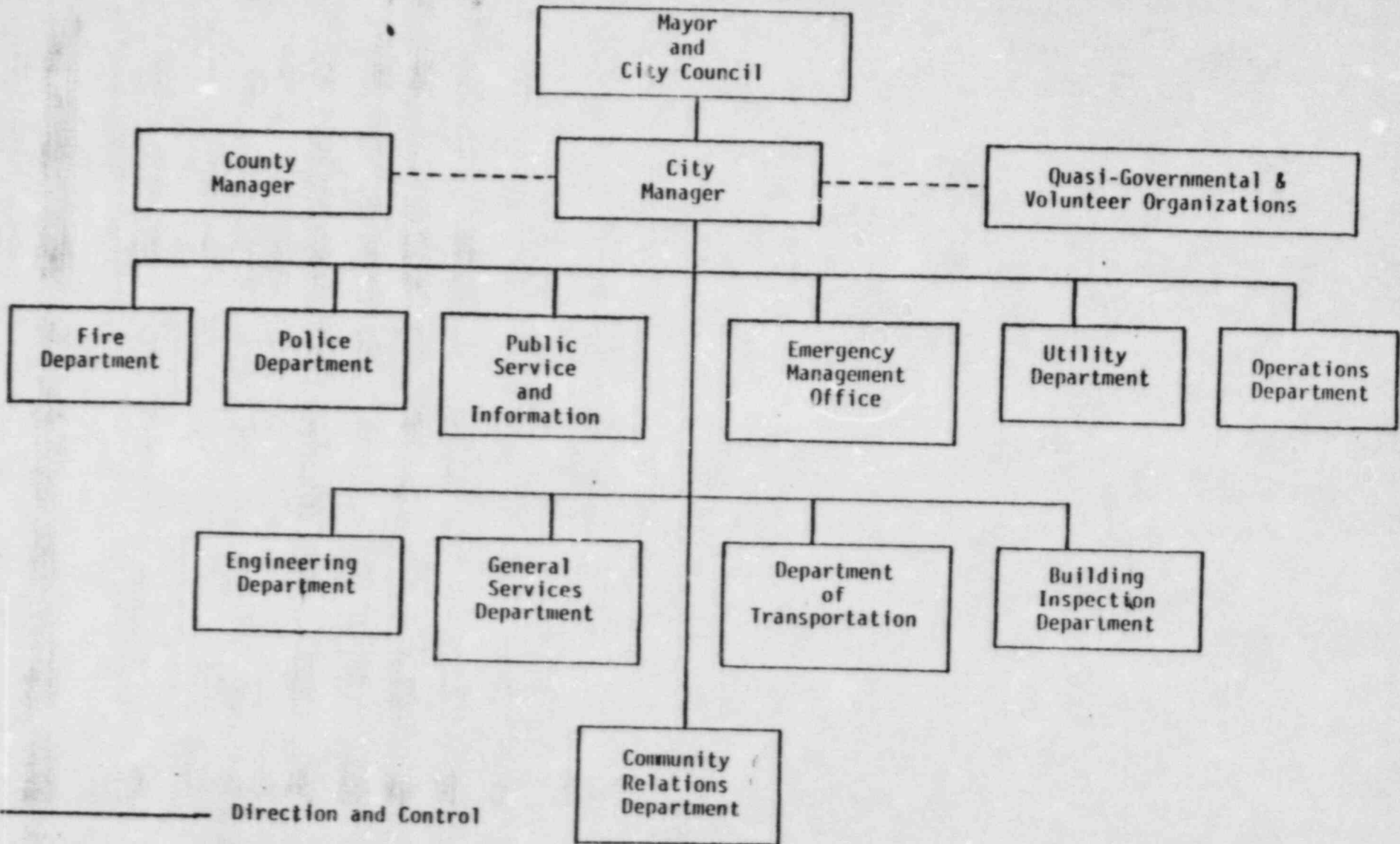
Signed:

  
\_\_\_\_\_  
Chairman, Mecklenburg County  
Board of Commissioners

  
\_\_\_\_\_  
Mayor, City of Charlotte

CITY OF CHARLOTTE  
PROTECTIVE RESPONSE PLAN FOR ALL HAZARDS

ORGANIZATION CHART



A-1

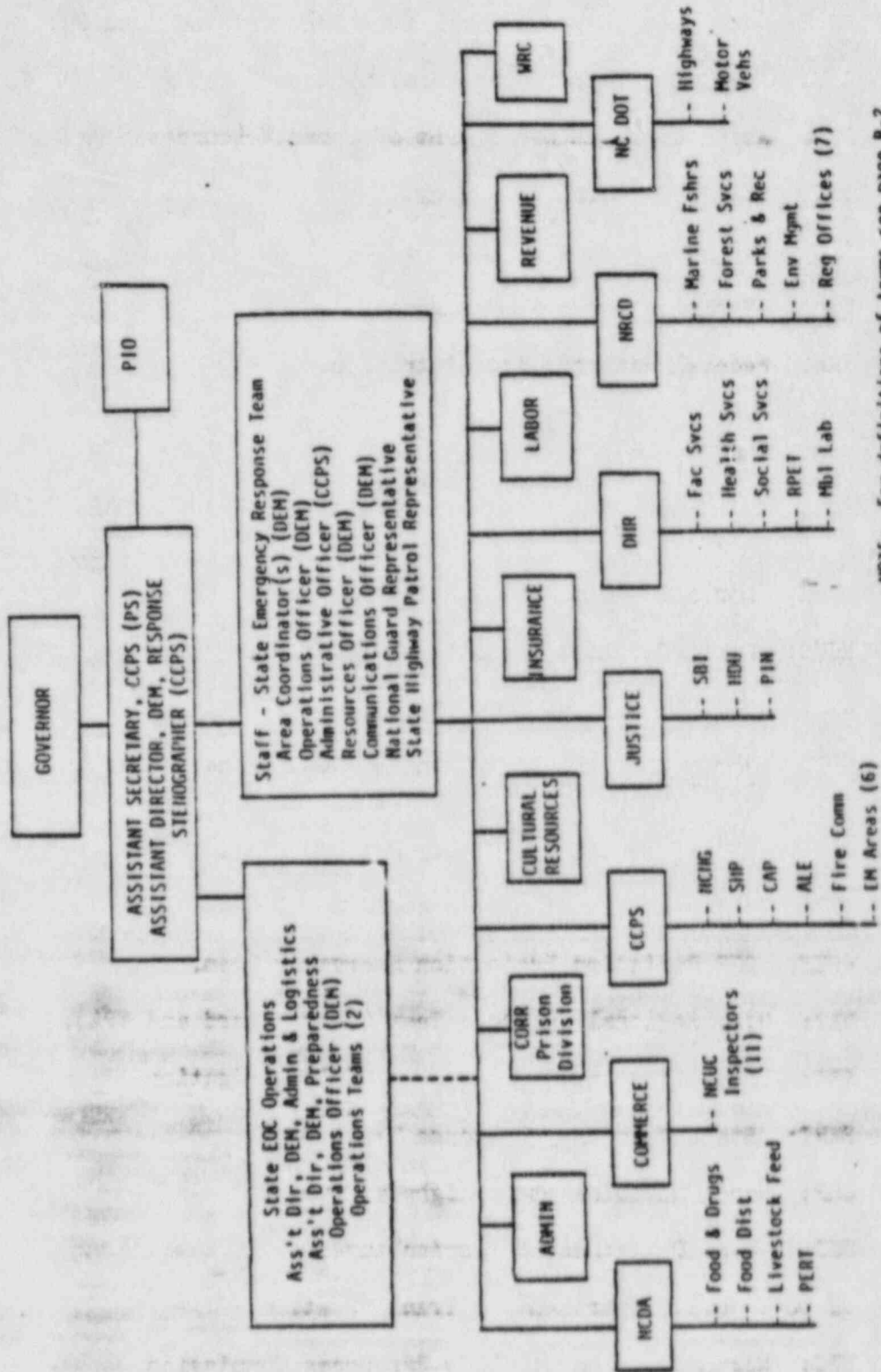
Protective Response Plan  
1982

Direction and Control

Coordination



SERT ORGANIZATION CHART  
 North Carolina Hazardous Materials Emergency Response Plan



NOTE: For definitions of terms see page B-2.

----- Direction and Control  
 - - - - - Coordination

CHECKLIST FOR REPORTING  
HAZARDOUS MATERIALS INCIDENTS OR REQUESTING ASSISTANCE

Provide as much of the following as possible:

1. Report that you are calling about a hazardous materials incident; give your name, title, and telephone call-back number: \_\_\_\_\_  
\_\_\_\_\_
2. Describe the nature of the incident and location: \_\_\_\_\_  
\_\_\_\_\_  
\_\_\_\_\_
3. Give the reasons why you believe hazardous materials are involved: \_\_\_\_\_  
\_\_\_\_\_
4. Give the name(s) and characteristic(s) of product(s), if known: \_\_\_\_\_  
\_\_\_\_\_
5. Give the Guide Number\* you are using, if any: \_\_\_\_\_  
\_\_\_\_\_
6. Report number of persons injured, if any: \_\_\_\_\_;  
number of persons exposed or contaminated, if any: \_\_\_\_\_;  
number of persons potentially subject to exposure later: \_\_\_\_\_
7. Describe any spill or leak observed; estimate the size of the spill in square feet if possible: \_\_\_\_\_;  
how close to rivers, streams, lakes, etc: \_\_\_\_\_
8. Report the presence of fire, if any: \_\_\_\_\_
9. Describe the weather: \_\_\_\_\_;  
and type of environment (example: populated, rural, business, etc.): \_\_\_\_\_  
\_\_\_\_\_

\* Guide Numbers described in DOT P5800.2

NORTH CAROLINA HAZARDOUS MATERIALS NOTIFICATION CHART

October 6, 1981

In Case of Incident During Transportation or at a Fixed Installation Involving:	For Immediate Information and/or On-Scene Assistance Call	Legally Required Notification (Note D)
INCIDENTS	SOURCE NUMBER	AGENCY NUMBER
Radioactive Materials	6,2	6,12 (Note C)
Pesticides	3,2 (Note A), 10	3,12 (Note C)
Explosives - Military	9,2	12 (Note C)
Explosives - Civilian	8,2 (Note A), 2	12 (Note C)
Petroleum & Other Flammable Liquids & Solids	4,5,2 (Note A), 10	4,11,12 (Note C)
Chemicals: Unknown Chemicals, Compressed Gases, Corrosive Liquids & Oxidizing Materials	5,10,2	12 (Note C)
EFFECTS		
Actual or Potential Contamination of Watersheds or Waterways by any product or chemical	4,5,2	4,11,12
Human Exposure to Radiological Material	6,2	6,12 (Note C)
Human Exposure to Toxic Material	7 (Note B), 2, 10	12 (Note C)

SOURCES OF INFORMATION, ASSISTANCE AND AGENCIES WITH A HEED TO KNRM

1. N.C. State Warning Point (SHP-24 hrs.) (Note E)	800/662-7956
2. N.C. Dept. of Crime Control & Public Safety Emergency Management Division Working Hours	919/733-3867
Non-Working Hours	Call # 1
3. N.C. Dept. of Agriculture/Pesticide Board Working Hours	919/733-3556
Non-Working Hours (Through the SBI)	919/777-1400
Contact SBI and request notification of Emergency Pesticide Team	
4. N.C. Dept. of Natural Resources and Community Development (NRCD) Environmental Management Division Working Hours	919/733-5291
Non-Working Hours	Call # 1
above or nearest Highway Patrol Office & request activation of N.C. Highway Patrol Directive No. 61 (Note E)	
5. N.C. Dept. of Human Resources, Environmental Health Section Working Hours	919/733-2321
Non-Working Hours	Call # 1
above or nearest Highway Patrol Office & request activation of N.C. Highway Patrol Directive No. 61 (Note E)	
6. N.C. Dept. of Human Resources, Radiation Protection Team Working Hours	919/733-4201
Non-Working Hours	Call # 1
above or nearest Highway Patrol Office and request activation of N.C. State Highway Patrol Directive No. 60.	
7. N.C. Poison Control Center (24 hrs.)	919/684-8111
8. N.C. Dept. of Justice, State Bureau of Investigation "Hazardous Devices Unit" (24 hrs.)	919/777-1400
9. 10th ORD DET, Ft. Bragg (24 hrs.)	919/410-5651
10. CHEMTREC (24 hrs.)	800/424-9300
11. U.S. Environmental Protection Agency (Region IV) (24 hrs.)	404/861-1062
12. U.S. Dept. of Transportation (24 hrs.)	R.R. Accident: 800/424-0201 Hwy. Accident: 800/424-8002
13. U.S. Coast Guard (Wilmington District) Working Hours	919/341-4801
Non-Working Hours	919/341-4895

\* This chart replaces all earlier editions which are obsolete and should be discarded.

NOTES:

A-Call N.C. State Government agency first, if possible.

B-As information source only.

C-USDOT Notification is required in transportation accidents which involve hazardous materials when: 1) a person is killed; 2) an injured person requires hospitalization; 3) estimated carrier or other property damage exceeds \$50,000; 4) fire, breakage, spillage, or suspected contamination of radiological materials; 5) in the judgment of the carrier, notification should be made.

D-Notification is responsibility of the carrier or installation operator as appropriate.

E-for calls in Wake County use 733-3061. The State Highway Patrol (SHP) operates the N.C.

State Warning Point.

PREPARED BY AND AVAILABLE FROM:

N.C. Division of Emergency Management  
116 W. Jones Street, Raleigh, N.C. 27611

Protective Response Plan 1982

ANNEX E

NORTH CAROLINA GUIDE FOR HAZARDOUS MATERIALS -  
HAZARD IDENTIFICATION, HAZARD ASSESSMENT, AND PROTECTIVE ACTION

1. Hazard Identification. It is essential that the hazardous materials type, quantity (size of puddle if spilled), and identification of manufacturer be obtained as rapidly as possible. The following should be considered and applied when appropriate:
  - a. Request information from surviving vehicle drivers, train crews, flight crews, and fixed facility operators.
  - b. For transportation accidents, shipping papers such as Waybills, Cargo Manifests, Airbills, and Hazardous Waste Manifests provide prime sources of information. The papers should show shipping name of material, classification, and may show the ID (identification number).
    - (1) The railroad waybills are usually located on the engine and in the caboose.
    - (2) Motor carrier waybills are located in the cab of the truck. The papers must be within reaching distance of the driver in the cab and may be in a holder which is mounted to the inside of the door on the driver's side of the vehicle.
    - (3) Ships' cargo manifests must be kept in a designated holder on or near the vessel's bridge.
    - (4) Airbills are usually located in the cockpit of the plane near the flight engineer's position.
    - (5) Hazardous Waste Manifests are located in the same place as waybills.
  - c. Other valuable hazardous materials identification sources are placards attached to the outside of the railroad cars, trucks, trailers, storage buildings and on containers aboard ships and barges. Also placards or labels of a similar nature attached to individual pieces of freight may be used for this purpose.
2. Hazard Assessment. It is essential that once the hazardous materials have been identified and quantities determined, an assessment be made of the potential threat to the emergency workers and populace in the vicinity of the accident. Extreme care should be exercised when attempting to identify the cargo and undue risk to emergency personnel must be avoided. The following actions will be helpful in this threat assessment:



- e. Contain or confine the hazardous material.
- f. Construct dikes to contain spills.
- g. Contact nearest National Weather Service and request operational weather forecasts.
- h. Keep upwind. Stay out of smoke and vapors.
- i. Prohibit the taking of souvenirs.
- j. Establish a triage area.
- k. Establish an equipment holding area.
- l. Back off firemen and other emergency workers leaving fixed fire-fighting equipment, if expendable, in place. Back off unexpendable equipment, e.g., pumpers and tankers.
- m. Identify, mark, and report individuals and equipment suspected of contamination.
- n. Alert and require personnel in the danger area to remain indoors with windows and doors closed.
- o. Alert and evacuate population and livestock in danger area.
- p. Avoid fires involving explosives unless supervised by an expert.
- q. Provide protective clothes and masks.
- r. Prohibit eating, drinking and smoking in or near the contaminated area.
- s. Ensure clean-up of the area involved by the owner, carrier or governmental agencies as soon as practicable.
- t. Wrap and label all contaminated clothing and equipment.
- u. Coordinate with the Solid and Hazardous Waste Branch of DHR for ultimate disposal of spill residues.

ANNEX F

OPERATING PROCEDURE FOR CITY OF CHARLOTTE, N. C.  
ALL HAZARDS EMERGENCY RESPONSE PLAN

1. Charlotte Fire Department.

- a. Maintain an operations map of the City of Charlotte showing the following:
  - (1) Boundaries of all voting precincts and subdivisions of larger precincts. See Annex H (i.e. latest voting precinct map of Charlotte).
  - (2) Location of all shelters. See Annex G - Shelter List.
- b. Maintain templates for forecasting probable downwind hazardous materials effects areas for distances out to 5 miles. Use U.S. DOT evacuation table shown in Guide Book P5800.2 as a guide.
- c. Upon receipt of the report of hazardous or potentially hazardous situations, the senior Fire Department official present will cause the following actions to be taken:
  - (1) Plot the location of the reported hazardous situation on the operations map.
  - (2) Verify the identification and confirm the harmful effects of the hazard.
  - (3) Verify wind direction at the scene.
  - (4) Using the template, plot the projected downwind path.
  - (5) If evacuation is recommended as protective action, direct evacuation of zones within projected areas.
  - (6) Specify shelters at least 5 miles from projected areas to receive evacuees.

## ANNEX G

## SHELTER LIST

<u>Shelter</u>	<u>Location *</u>	<u>Capacity</u>
1. East Mecklenburg High School	6800 Monroe Rd, SE from Rama Rd/ Idlewild Rd Intersection	4,603
2. Garinger High School	1100 Eastway Dr, NW from Sugar Creek Rd Intersection	5,918
3. Harding High School	2001 Alleghany St, W from Ashley Rd, (from 3100 Wilkinson Blvd (US-74W))	3,488
4. Independence High School	1967 Patriot Dr, W from Wilson Grove Rd (from 9101 Lawyers Rd)	5,217
5. Myers Park High School	2400 Colony Rd, E from 2900 Selwyn Ave	6,527
6. North Mecklenburg High School	- Old Statesville Rd (NC-115N) N from Alexandriana Rd Intersection	4,186
7. Olympic High School	- Sandy Porter Rd at Brown Grier Rd (NW on Sandy Porter from NC-49S)	4,396
8. South Mecklenburg High School	(8800) Park Rd, S from Sharon Rd W/Gleneagles Rd Intersection	5,170
9. West Charlotte High School	2219 Senior Dr W from 2100 Beatties Ford on LaSalle St	4,723
10. West Mecklenburg High School	7400 Tuckaseegee Rd, W from Little Rock Rd Intersection (Exit from I-85S)	4,082
11. Albemarle Road Junior High School	6900 Democracy Dr, S from 6700 Albemarle Rd on Regal Oaks Dr to Democracy Dr	2,722
12. Alexander Junior High School	- Hambright Rd, W from NC-115 at Hambright Intersection (N of N Meck Hi)	2,796
13. Carmel Junior High School	4600 Camilla Dr, SE from 2501 Carmel Rd	2,853
14. Cochrane Junior High School	6200 Starhaven Dr, SE from 6200 Plaza Rd	3,082
15. Coulwood Junior High School	1901 Kentberry Dr, W from NC-16N (NW from Gum Branch Rd Intersection)	2,362
16. Eastway Junior High School	3333 Biscayne Dr, Parking at 1401 Norland Rd, S from 4300 Central Ave	2,800
17. Hawthorne Junior High School	1400 Pegram St, W from 1600 Hawthorne Ln	2,699