

September 27, 1995

E. Thomas Boulette, PhD  
Senior Vice President - Nuclear  
Boston Edison Company  
Pilgrim Nuclear Power Station  
600 Rocky Hill Road  
Plymouth, Massachusetts 02360-5599

SUBJECT: PRESSURE LOCKING AND THERMAL BINDING MEETING

Dear Mr. Boulette:

I am extending an invitation to Region I licensees to participate with the Office of Nuclear Reactor Regulation (NRR) and Region I representatives in a discussion of Generic Letter (GL) 95-07, "Pressure Locking and Thermal Binding of Safety-Related Power-Operated Gate Valves." Special emphasis will be placed on the principal technical issues, experiences and analyses of pressure locking and thermal binding, recommendations in GL 95-07, and planned NRC actions to resolve this concern.

The meeting will be held on Thursday, November 2, 1995, from 8:00 a.m. to 4:30 p.m. at the Doubletree Guest Suites (610-647-6700), Wayne, PA. The meeting is open for public observation and will be attended by NRC Region I, NRR and other NRC staff. We request that you consider sending two to three members of your staff and management associated with the evaluation of pressure locking and thermal binding.

To make the meeting as productive as possible, please provide a preliminary list of questions and issues, and indicate who will represent you at the meeting by October 13, 1995. Those questions and issues will form the bases for additional discussions. We also intend to present overviews by both NRC and utility managers, presenting their perspective on GL 95-07. The meeting notice, an agenda for the meeting, along with directions to the meeting are attached for your information.

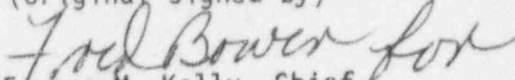
100014  
9510100241 950927  
PDR ADOCK 05000293  
P PDR

1E01  
11

Questions regarding the meeting details and feedback on questions and attendees may be directed to me directly at (610) 337-5111. I look forward to our meeting.

Sincerely,

(original signed by)

  
Eugene M. Kelly, Chief  
Systems Section  
Division of Reactor Safety

Docket No. 50-293

Enclosures:

1. Meeting Notice
2. Agenda
3. Directions

cc w/encls:

L. Olivier, Vice President - Nuclear and Station Director  
T. Sullivan, Plant Department Manager  
R. Fairbank, Manager, Regulatory Affairs and Emergency Planning Department  
D. Tarantino, Nuclear Information Manager  
D. Ellis, Acting Compliance Supervisor  
R. Hallisey, Department of Public Health, Commonwealth of Massachusetts  
The Honorable Therese Murray  
The Honorable Linda Teagan  
B. Abbanat, Department of Public Utilities  
Chairman, Plymouth Board of Selectmen  
Chairman, Duxbury Board of Selectmen  
Chairman, Nuclear Matters Committee  
Plymouth Civil Defense Director  
Paul W. Gromer, Massachusetts Secretary of Energy Resources  
Bonnie Cronin, Legislative Assistant  
A. Nogee, MASSPIRG  
Regional Administrator, FEMA  
Office of the Commissioner, Massachusetts Department of Environmental Quality  
Engineering  
Office of the Attorney General, Commonwealth of Massachusetts  
T. Rapone, Massachusetts Executive Office of Public Safety  
Chairman, Citizens Urging Responsible Energy  
NRC Resident Inspector  
Commonwealth of Massachusetts, SLO Designee

Distribution w/encls:

- Region I Docket Room (with concurrences)
- PUBLIC
- Nuclear Safety Information Center (NSIC)
- T. Marsh, NRR
- R. Eaton, NRR
- W. Dean, OEDO
- Inspection Program Branch, NRR (IPAS)
- R. Conte, DRP
- J. Shedlosky, DRP
- H. Eichenholz, DRP
- M. Kalamon, DRP
- DRS File

DOCUMENT NAME: G:VLVEMTG.7

To receive a copy of this document, indicate in the box: "C" = Copy without attachment/enclosure "E" = Copy with attachment/enclosure "N" = No copy

OFFICE	RI/DRS	E	/	/			
NAME	EKelly/dmg	<i>[Handwritten Signature]</i>					
DATE	09/27/95	09/ /95	09/ /95	09/ /95	09/ /95	09/ /95	09/ /95

OFFICIAL RECORD COPY

ENCLOSURE 1

U. S. NUCLEAR REGULATORY COMMISSION  
REGION I  
NOTICE OF SIGNIFICANT LICENSEE MEETING

Licensees: Baltimore Gas & Electric Company, Calvert Cliffs 1&2 (50-317; 50-318)  
Facilities: Boston Edison, Pilgrim (50-293)  
Docket Nos: Connecticut Yankee Atomic Power Company, Haddam Neck (50-213)  
Duquesne Light Company, Beaver Valley 1&2 (50-334; 50-412)  
GPU Nuclear Corporation, Three Mile Island 1&2 (50-289; 50-320)  
Oyster Creek (50-219)  
New York Power Authority, Indian Point 3 (50-286), FitzPatrick (50-333)  
Niagara Mohawk Power Corporation, Nine Mile Point 1&2 (50-220; 50-410)  
North Atlantic Energy Service Corporation, Seabrook (50-443)  
Northeast Nuclear Energy Co., Millstone 1,2,& 3 (50-245; 50-336; 50-423)  
PECO Energy, Limerick 1&2 (50-352; 50-353), Peach Bottom (50-277; 50-278)  
Pennsylvania Power & Light Company, Susquehanna 1&2 (50-387; 50-388)  
Public Service Electric & Gas Company, Hope Creek (50-354),  
Salem 1&2 (50-372; 50-311)  
Rochester Gas & Electric Company, Ginna (50-244)  
Vermont Yankee Nuclear Power Corporation, Vermont Yankee (50-271)

Time and Date: Thursday, November 2, 1995  
8:00 a.m. to 4:30 p.m.

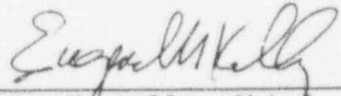
Location: Doubletree Guest Suites (610-647-6700)  
Wayne, Pennsylvania

Purpose: Discussion of power-operated valve pressure locking and thermal binding issues with Region I licensees. Special emphasis will be placed on: (1) the principal technical issues; (2) typical calculational methods and assumptions; and (3) the process for resolution of Generic Letter 95-07, "Pressure Locking and Thermal Binding of Safety-Related Power-Operated Gate Valves."

NRC Attendees: W. Kane, Deputy Regional Administrator  
J. Wiggins, Director, Division of Reactor Safety (DRS)  
R. Wessman, Chief, NRR, Mechanical Engineering Branch (MEB)  
E. Kelly, Chief, Systems Branch, DRS  
T. Scarbrough, Senior Mechanical Engineer, NRR, MEB  
H. Rathbun, Mechanical Engineer, NRR, MEB

- NOTE:
- (1) Attendance by NRC personnel at the NRC/Licensee meeting should be made known by October 13, 1995, via telephone call to E. Kelly (610) 337-5111.
  - (2) Due to the subject matter and nature of this meeting, this meeting is open for observation by members of the general public.

Prepared By:

  
\_\_\_\_\_  
Eugene M. Kelly, Chief  
Systems Branch  
Division of Reactor Safety

ENCLOSURE 2

PRESSURE LOCKING AND  
THERMAL BINDING MEETING AGENDA

NOVEMBER 2, 1995

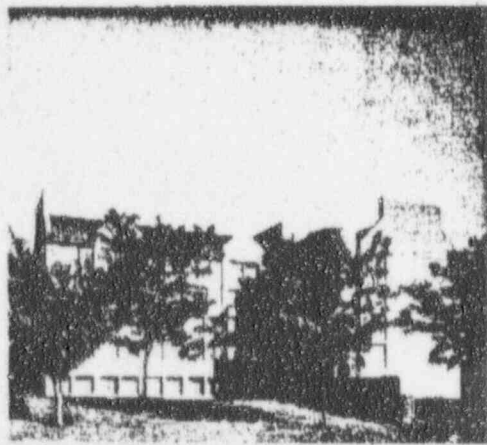
8:00 - 8:15 a.m.	Welcome and Opening Remarks by William Kane, Deputy Regional Administrator
8:15 - 8:45 a.m.	"Utility Perspective," by Robert Harris, Program Manager, Northeast Utilities
8:45 - 9:00 a.m.	"The Headquarters Perspective," by Richard Wessman, Chief, NRR, Mechanical Engineering Branch (MEB), Division of Engineering
9:00 - 9:30 a.m.	"Pressure Locking and Thermal Binding Experiences," by Tom Scarbrough, Senior Mechanical Engineer, NRR, MEB
9:30 - 9:45 a.m.	Break
9:45 - 11:15 a.m.	Breakout Sessions
11:15 - 11:30 a.m.	Breakout Session Results
11:30 - 1:00 p.m.	Lunch
1:00 - 1:30 p.m.	"Utility Perspective," by Pennsylvania Power & Light Company
1:30 - 2:00 p.m.	"Examples of GL 95-07 Susceptibility And Evaluation Methods," by Howard Rathbun, Mechanical Engineer, NRR, MEB
2:00 - 2:15 a.m.	Break
2:15 - 4:15 p.m.	Questions and Answers Panel Session
4:15 - 4:30 p.m.	Closing Remarks by Eugene Kelly, Chief, Systems Branch, Division of Reactor Safety





**DOUBLE TREE**  
**GUEST SUITES**  
 VALLEY FORGE

*Overlooking historic Valley Forge National Park, Doubletree Guest Suites is located in Chesterbrook Corporate Center, just minutes from Longwood Gardens, Valley Forge Music Fair and King of Prussia Shopping Complex. The hotel is also within easy access of Center City, Philadelphia and Wilmington, Delaware.*



*All 229 luxurious guest suites are beautifully appointed, creating a comfortable environment for relaxing or entertaining. As well as spacious living and bedrooms, each suite is furnished with a well-stocked refrigerator, minibar and wet bar area. To start your day, there's complimentary coffee, tea and decaf plus a copy of USA Today.*

*For your fitness regimen, consider the refreshing indoor pool, whirlpool, sauna, spa and jogging/walking trails. Dine casually on American cuisine at our Town & Country Grille at Chesterbrook. On weekends, enjoy entertainment at the Atrium Lounge.*

*If you have a business or social function, there are six flexible meeting and banquet rooms accommodating up to 120 people. For board meetings there are nine executive meeting suites, each able to seat eight. Large or small, your special occasions will be handled flawlessly by our dedicated staff.*

*Of course, every stay begins with Doubletree's signature greeting—our freshly baked chocolate chip cookies accompanied by a warm welcome. It's all part of the personal attention that sets Doubletree Guest Suites apart.*



888 Chesterbrook Boulevard, Wayne, PA 19087  
 Dial Direct: (610) 647-6700 • Fax: (610) 889-9420

**1-800-222-TREE**

*Doubletree Hotels Corporation welcomes you from coast to coast at over 100 Doubletree Hotels and Doubletree Guest Suites.*

**Directions to  
DoubleTree Guest Suites - Valley Forge**

**FROM NEW YORK/NEW JERSEY**

- ~ Take the New Jersey Turnpike South to Pennsylvania Turnpike West, Exit 6
- ~ Continue on Pennsylvania Turnpike to Exit 24 (Valley Forge/King of Prussia)
- ~ After Going Through the Toll Booth, Take Exit 26A (West Chester/202 South)
- ~ Follow 202 South for 4 Miles to the Chesterbrook Boulevard Exit
- ~ The Doubletree Guest Suites is on the Right

**FROM THE PENNSYLVANIA TURNPIKE AND POINTS NORTH**

- ~ Exit 24 (Valley Forge/King of Prussia)
- ~ After Going Through the Toll Booth, Take Exit 26A (West Chester/202 South)
- ~ Follow 202 South for 4 Miles to the Chesterbrook Boulevard Exit
- ~ The DoubleTree Guest Suites is on the Right

**FROM PHILADELPHIA AND THE AIRPORT**

- ~ Take 95 South (Delaware) Approximately 4 Miles to 476 North, Exit 7 (Plymouth Meeting)
- ~ Follow 476 for Approximately 17 Miles to Exit 6B (Valley Forge/76 West)
- ~ Take 76 West to Exit 26B (Valley Forge/West Chester/202 South)
- ~ Follow 202 South for 4 Miles to Chesterbrook Boulevard Exit
- ~ The DoubleTree Guest Suites is on the Right

**FROM THE SCHUYLKILL EXPRESSWAY (RT 76) AND CENTER CITY**

- ~ Take 76 West to Exit 26B (Valley Forge/West Chester/202 South)
- ~ Follow 202 South for 4 Miles to the Chesterbrook Boulevard Exit
- ~ The DoubleTree Guest Suites is on the Right

**FROM DELAWARE AND SOUTHERN POINTS**

- ~ Take 95 North to 476 North - Exit 7 (Plymouth Meeting)
- ~ Follow 476 for Approximately 17 Miles to Exit 6B (Valley Forge/76 West)
- ~ Take 76 West to Exit 26B (Valley Forge/West Chester/202 South)
- ~ Follow 202 South for 4 Miles to Chesterbrook Boulevard Exit
- ~ The DoubleTree Guest Suites is on the Right

**TRAVELING NORTH ON RT. 202**

- ~ Follow 202 North to the 252/Chesterbrook/Paoli Exit
- ~ At the Bottom of the Ramp make a Left
- ~ Make a Right at the Light onto Duportail Road and Follow to the Second Light
- ~ Cross the Intersection into the DoubleTree Guest Suites Parking Lot

**TRAVELING EAST ON RT. 422**

- ~ Take 202 South/West Chester Exit
- ~ Follow 202 South for Approximately 3 1/2 Miles to Chesterbrook Boulevard Exit
- ~ The Doubletree Guest Suites is on the Right