

Docket Nos. 50-313
50-368
License Nos. DPR-51
NPF-6

JUN 2 1992

Entergy Operations, Inc.
ATTN: Neil S. Carns, Vice President
Operations, Arkansas Nuclear One
Route 3, Box 137G
Russellville, Arkansas 72801

SUBJECT: FINAL SYSTEMATIC ASSESSMENT OF LICENSEE PERFORMANCE (SALP) REPORT
NO. 50-313/92-99; 50-368/92-99

This forwards the final SALP report for Arkansas Nuclear One (ANO), Units 1 and 2, for the period of December 1, 1990, through February 29, 1992. This final SALP report includes:

1. The initial SALP report cover letter (no revisions).
2. A summary and list of attendees at our May 6, 1992, meeting at the Reeves Ritchie Training Center, Russellville, Arkansas.
3. Your May 20, 1992, response to the initial SALP report.

I consider the actions discussed in the May 6, 1992, SALP management meeting and in your May 20, 1992, response to the initial SALP report to be responsive to NRC concerns and recommendations. We are encouraged with the improvement in ANO's performance during this assessment period. It remains a challenge for ANO to continue to follow through with the implementation of the initiatives you have identified and to meet your intended goals of excellence.

The next SALP period for ANO is scheduled to last 15 months, from March 1, 1992, through May 29, 1993.

Sincerely,
Original Signed By
J. Montgomery
Robert D. Martin
Regional Administrator

- Enclosures:
1. Initial SALP report cover letter
 2. Meeting summary and attendance list
 3. Entergy Operations, Inc. response to the initial SALP report

cc: (see next page)

<i>fr</i> RIV:RI LJSmith;df 5/26/92	DRP/A <i>mas</i> MASatorius 5/26/92	C:DRP/A WDJohnson 5/26/92	NRR <i>Telecom</i> SRPeterson 5/26/92	NRR <i>telecom</i> JTLarkins 5/26/92	NRR <i>telecom</i> TWAlexion 5/26/92
<i>fr</i> D:DRSS LJCallan 5/26/92	D:DRS SJCollins 5/26/92	<i>fr</i> D:DRP ABBeach 5/29/92	<i>fr</i> DRA JMMontgomery 5/26/92	<i>fr</i> RA RDMartin 5/26/92	<i>fr</i> IEU 1/1

9206100026 920602
PDR ADQCK 05000313
G PDR

Entergy Operations, Inc.

-2-

cc w/enclosures:

Entergy Operations, Inc.

ATTN: Donald C. Hintz, Executive Vice
President & Chief Operating Officer

P.O. Box 31995

Jackson, Mississippi 39286

Entergy Operations, Inc.

ATTN: John R. McGaha, Vice President
Operations Support

P.O. Box 31995

Jackson, Mississippi 39286

Wise, Carter, Child & Caraway

ATTN: Robert B. McGehee, Esq.

P.O. Box 651

Jackson, Mississippi 39205

Entergy Operations, Inc.

ATTN: Jerry Yelverton, General Manager
Plant Operations

Route 3, Box 137G

Russellville, Arkansas 72801

Entergy Operations, Inc.

ATTN: James J. Fisicaro
Director, Licensing

Route 3, Box 137G

Russellville, Arkansas 72801

Honorable Joe W. Phillips

County Judge of Pope County

Pope County Courthouse

Russellville, Arkansas 72801

Winston & Strawn

ATTN: Nicholas S. Reynolds, Esq.

1400 L Street, N.W.

Washington, D.C. 20005-3502

Arkansas Department of Health

ATTN: Ms. Greta Dicus, Director

Division of Radiation Control and
Emergency Management

4815 West Markham Street

Little Rock, Arkansas 72201-3867

B&W Nuclear Technologies
ATTN: Robert B. Borsum
Licensing Representative
1700 Rockville Pike, Suite 525
Rockville, Maryland 20852

Admiral Kinnaid R. McKee, USN (Ret)
214 South Morris Street
Oxford, Maryland 21654

ABB Combustion Engineering
Nuclear Power
ATTN: Charles B. Brinkman
Manager, Washington
Nuclear Operations
12300 Twinbrook Parkway, Suite 330
Rockville, Maryland 20852

~~bcc to DMB (TE40)~~

bcc distrib. by RIV:

R. D. Martin
DRSS-FIPS
Lisa Shea, RM/ALF
DRP (2)
RSTS Operator
DRS
The Chairman (MS: 16-G-15)
Commissioner Rogers (MS: 16-G-15)
Commissioner Curtiss (MS: 16-G-15)
Commissioner Remick (MS: 16-G-15)
Commissioner de Planque (MS: 16-G-15)
J. M. Taylor, EDO (MS: 17-G-21)
J. M. Montgomery
J. T. Gilliland, PAO

Resident Inspector
Section Chief (DRP/A)
RIV File
MIS System
Project Engineer (DRP/A)
Chief, Technical Support Section
Records Center, INPO
G. F. Sanborn, EO
Chief, TSS, DRP
RRIs at all sites
L. J. Callan, D:DRSS
J. P. Jaudon, DRSS
B. Murray, DRSS
C. A. Hackney

B&W Nuclear Technologies
ATTN: Robert B. Borsum
Licensing Representative
1700 Rockville Pike, Suite 525
Rockville, Maryland 20852

Admiral Kinnaird R. McKee, USN (Ret)
214 South Morris Street
Oxford, Maryland 21654

ABB Combustion Engineering
Nuclear Power
ATTN: Charles B. Brinkman
Manager, Washington
Nuclear Operations
12300 Twinbrook Parkway, Suite 330
Rockville, Maryland 20852

bcc to DMB (1E40)

bcc distrib. by RIV:

R. D. Martin
DRSS-FIPS
Lisa Shea, RM/ALF
DRP (2)
RSTS Operator
DRS
The Chairman (MS: 16-G-15)
Commissioner Rogers (MS: 16-G-15)
Commissioner Curtiss (MS: 16-G-15)
Commissioner Remick (MS: 16-G-15)
Commissioner de Planque (MS: 16-G-15)
J. M. Taylor, EDO (MS: 17-G-21)
J. M. Montgomery
J. T. Gilliland, PAO

Resident Inspector
Section Chief (DRP/A)
RIV File
MIS System
Project Engineer (DRP/A)
Chief, Technical Support Section
Records Center, INPO
G. F. Sanborn, EO
Chief, TSS, DRP
RRIs at all sites
L. J. Callan, D:DRSS
J. P. Jaudon, DRSS
B. Murray, DRSS
C. A. Hackney

APR 27 1992

Docket Nos. 50-313
50-368
License Nos. DPR-51
NPF-6

Entergy Operations, Inc.
ATTN: Mr. Neil S. Carns, Vice President
Operations, Arkansas Nuclear One
Route 3, Box 137G
Russellville, Arkansas 72801

Gentlemen:

SUBJECT: INITIAL SYSTEMATIC ASSESSMENT OF LICENSEE PERFORMANCE REPORT

This forwards the initial Systematic Assessment of Licensee Performance (SALP) Report (50-313;368/92-99) for the Arkansas Nuclear One (ANO), Units 1 and 2. The SALP Board met on April 3, 1992, to evaluate ANO's performance for the period December 1, 1990, through February 29, 1992. The performance analyses and resulting evaluations are documented in the enclosed initial SALP report.

In accordance with NRC policy, I have reviewed the SALP Board's assessment and concur with their ratings, as discussed below.

1. Performance in the area of Plant Operations was rated as Category 1. Active and aggressive oversight and management of site safety and equipment reliability was exhibited. The nuclear safety aspects of plant operation were conducted in a superior manner and safety decisions were consistently conservative with a high sensitivity to shutdown risk. Operations shift expertise was enhanced and operators maintained excellent plant control.
2. Performance in the area of Radiological Controls was rated as Category 2 with an improving trend. Excellent management involvement and support for the radiation protection program resulted in significantly improved performance. The ALARA program was effective, resulting in reduced personnel exposure. The working relationship between the radiation protection department and other departments improved significantly.
3. Performance in the area of Maintenance/Surveillance was rated as Category 2. Management involvement in the maintenance area and oversight of maintenance activities were generally good while making a

~~920504100103~~

3pp.

number of improvements. System engineers provided useful inputs to resolve equipment failures and reliability concerns. Continued effort is needed to improve maintenance procedures and control of maintenance activities. Outage planning improved substantially and maintenance at power was usually well planned. Performance in the surveillance area has been superior.

4. Performance in the area of Emergency Preparedness was rated as Category 1 and continued improvement was noted. Excellent management support was evident and emergency response facilities and personnel were maintained in a high state of readiness.
5. Performance in the area of Security was rated as Category 1. Management provided excellent support for the security program, maintaining and improving the program. Staffing and training were strengths.
6. Performance in the area of Engineering/Technical Support was rated as Category 2. Performance improved with a more proactive approach to engineering and technical issues evident. Formation of engineering peer and system engineering groups was viewed as a strength. A significant engineering workload existed but a backlog reduction project was being implemented. ANO was an industry leader in selected technical problem resolution but less aggressive engineering effort was exhibited in licensing submittals for some existing plant issues.
7. Performance in the area of Safety Assessment/Quality Verification was rated as Category 2. Management effectiveness was demonstrated in operability determinations, self assessment, and corrective action programs. Continued implementation of the ANO Business Plan focused site initiatives and measured progress in improvement programs. Plant personnel exhibited a conservative safety attitude. Operability concerns were addressed in an aggressive, conservative manner.

Overall, the performance of ANO was significantly improved during this assessment period. Effective management oversight and involvement were evident in each functional area. Notable improvements were made in the plant operations and radiological controls areas and some improvements were accomplished in every area. Staff qualifications, safety attitudes, and professionalism were strong and improving. Solid programs to control activities were the norm, while some programs were still being upgraded.

Based on the SALP Board's assessment, the length of the SALP period will be approximately 15 months, from March 1, 1992, to May 31, 1993.

A management meeting has been scheduled with you and your staff on May 6, 1992, at your ANO Facility in Russellville, Arkansas, to review the results of the SALP Board. Within 20 days of this management meeting, you may

Entergy Operations, Inc.

-3-

provide written comments on, and amplification of, as appropriate, the initial SALP report.

Your written comments, a summary of our meeting, and the results of my consideration of your comments will be issued as an appendix to the enclosed initial SALP report and will constitute the final SALP report.

Sincerely,

Digitally signed by
Robert D. Martin

Robert D. Martin
Regional Administrator

Enclosure:
Initial SALP Report
50-313;368/92-99

cc w/enclosure:
Entergy Operations, Inc.
ATTN: Donald C. Hintz, Executive Vice
President & Chief Operating Officer
P.O. Box 31995
Jackson, Mississippi 39286

Entergy Operations, Inc.
ATTN: John R. McGaha, Vice President
Operations Support
P.O. Box 31995
Jackson, Mississippi 39286

Wice, Carter, Child & Caraway
ATTN: Robert B. McGehee, Esq.
P.O. Box 651
Jackson, Mississippi 39205

Arkansas Nuclear One
ATTN: Early Ewing, General Manager
Technical Support and Assessment
Route 3, Box 137G
Russellville, Arkansas 72801

Entergy Operations, Inc.
ATTN: Jerry Yelverton, General Manager
Plant Operations
Route 3, Box 137G
Russellville, Arkansas 72801

UNITED STATES
NUCLEAR REGULATORY
COMMISSION



SYSTEMATIC ASSESSMENT
OF
LICENSEE PERFORMANCE
(SALP)

ENERGY OPERATIONS, INC.
ARKANSAS NUCLEAR ONE
UNITS 1 AND 2

DECEMBER 1, 1990
THROUGH
FEBRUARY 29, 1992

RUSSELLVILLE, ARKANSAS
MAY 6, 1992

AGENDA

INTRODUCTIONS

NRC

ENTERGY

OPENING REMARKS

ROBERT D. MARTIN

SALP PRESENTATION

T. PAT GWYNN

CLOSING REMARKS

ROBERT D. MARTIN

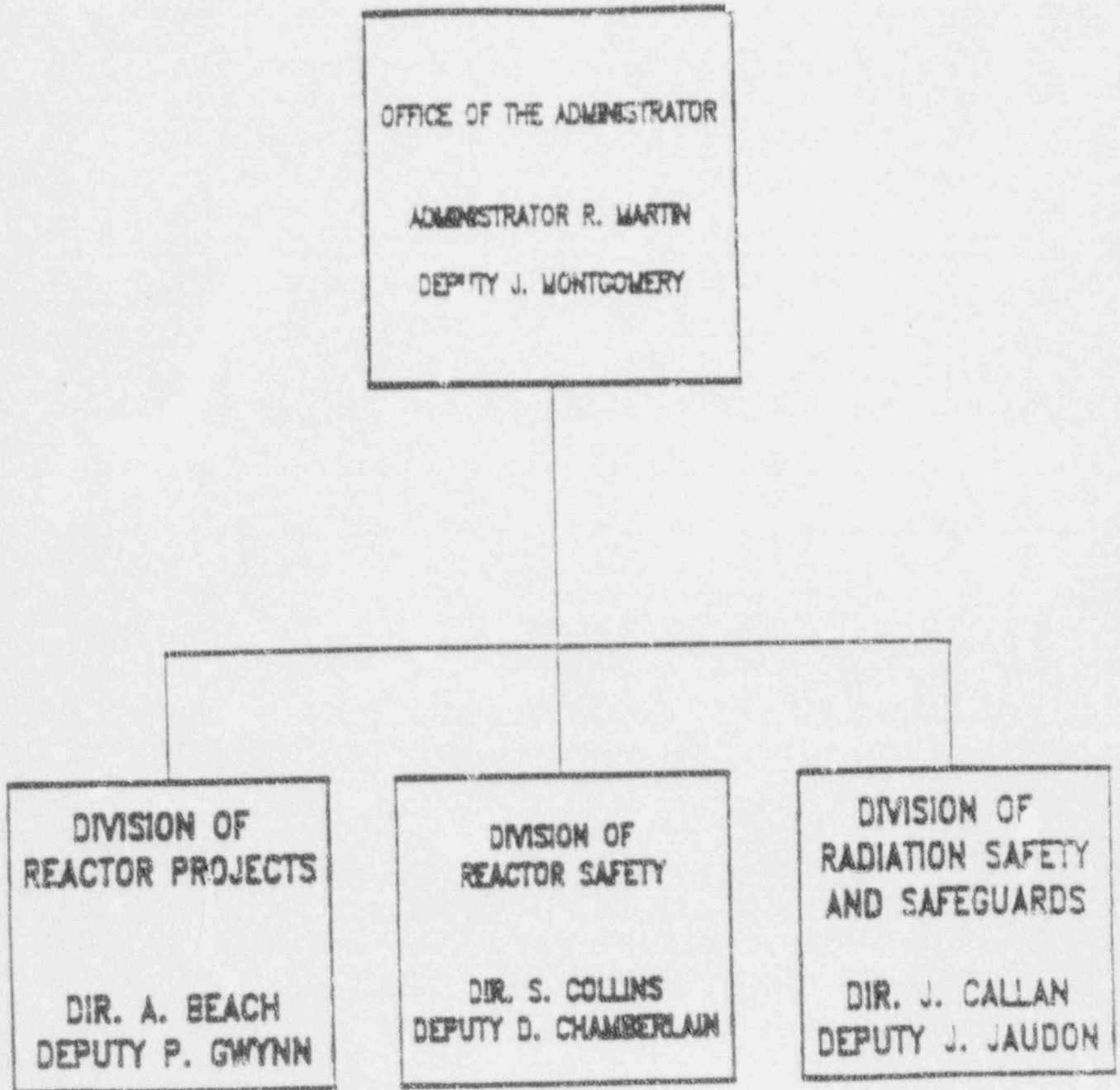
COMMENTS/QUESTIONS

ENTERGY

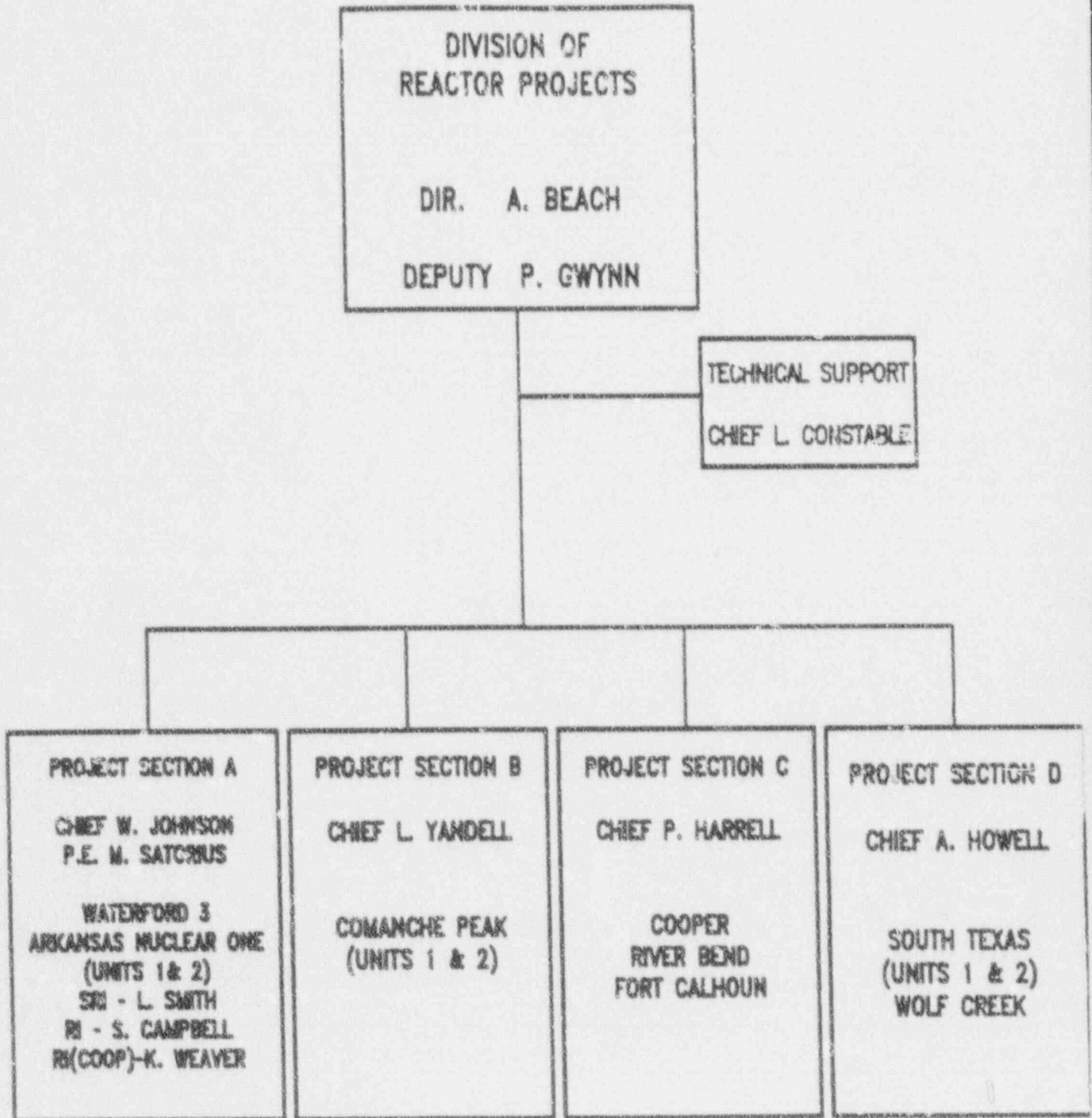
COMMENTS/QUESTIONS

PUBLIC/MEDIA

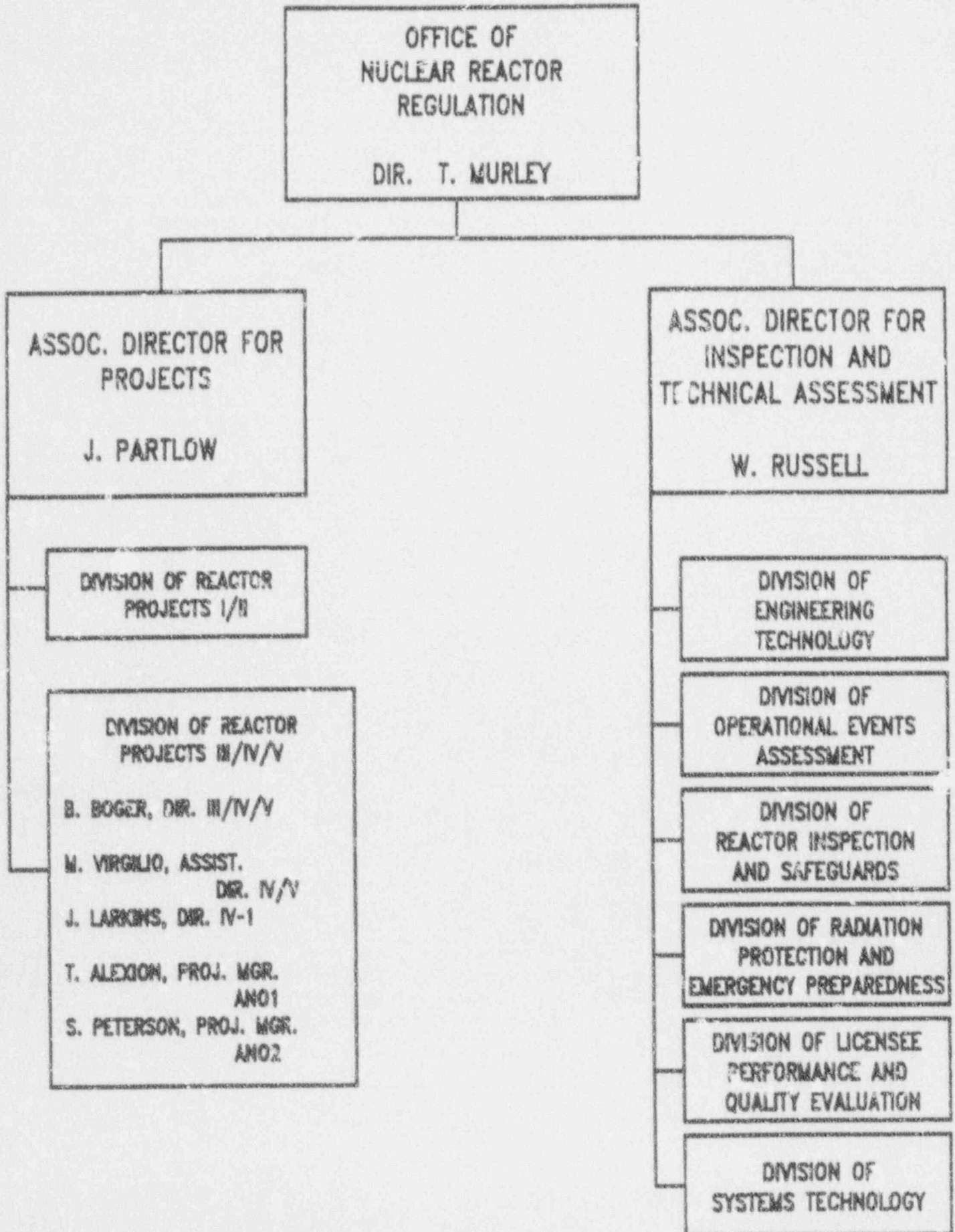
REGION IV ORGANIZATION



DIVISION OF REACTOR PROJECTS ORGANIZATION



NRR ORGANIZATION



SALP PROGRAM OBJECTIVES

1. IDENTIFY TRENDS IN LICENSEE PERFORMANCE
2. PROVIDE A BASIS FOR ALLOCATION OF NRC RESOURCES
3. IMPROVE NRC REGULATORY PROGRAM

PERFORMANCE ANALYSIS AREAS

PLANT OPERATIONS

RADIOLOGICAL CONTROLS

MAINTENANCE/SURVEILLANCE

EMERGENCY PREPAREDNESS

SECURITY

ENGINEERING/TECHNICAL SUPPORT

SAFETY ASSESSMENT/QUALITY VERIFICATION

PERFORMANCE RATING

CATEGORY 1

LICENSEE MANAGEMENT ATTENTION TO AND INVOLVEMENT IN NUCLEAR SAFETY OR SAFEGUARDS ACTIVITIES RESULTED IN A SUPERIOR LEVEL OF PERFORMANCE. NRC WILL CONSIDER REDUCED LEVELS OF INSPECTION EFFORT.

PERFORMANCE RATING

CATEGORY 2

LICENSEE MANAGEMENT ATTENTION TO AND INVOLVEMENT IN NUCLEAR SAFETY OR SAFEGUARDS ACTIVITIES RESULTED IN A GOOD LEVEL OF PERFORMANCE. NRC WILL CONSIDER MAINTAINING NORMAL LEVELS OF INSPECTION EFFORT.

PERFORMANCE RATING

CATEGORY 3

LICENSEE MANAGEMENT ATTENTION TO AND INVOLVEMENT IN NUCLEAR SAFETY OR SAFEGUARDS ACTIVITIES RESULTED IN AN ACCEPTABLE LEVEL OF PERFORMANCE; HOWEVER, BECAUSE OF THE NRC'S CONCERN THAT A DECREASE IN PERFORMANCE MAY APPROACH OR REACH AN UNACCEPTABLE LEVEL, NRC WILL CONSIDER INCREASED LEVELS OF INSPECTION EFFORT.

PERFORMANCE TREND

AN APPRAISAL OF A PERFORMANCE TREND IN A FUNCTIONAL AREA IS USED AS A PREDICTIVE INDICATOR. A PERFORMANCE TREND SHOULD ONLY BE USED IF BOTH A DEFINITE TREND IS DISCERNIBLE, EITHER IMPROVING OR DECLINING, AND CONTINUATION OF THE TREND MAY RESULT IN A CHANGE IN PERFORMANCE RATING.

**EVALUATION
CRITERIA**

	Assurance of Quality	Approach to the Resolution of Technical Issues from a Safety Standpoint	Enforcement History	Operational and Construction Events	Staffing	Effectiveness of Training and Qualifications	Category Rating
Plant Operations							
Radiological Controls							
Maintenance/Surveillance							
Emergency Preparedness							
Security							
Engineering/Technical Support							
Safety Assessment/Quality Verification							

ANO OVERALL PERFORMANCE SUMMARY

FUNCTIONAL AREA	RATING LAST PERIOD 10/1/89--11/30/90	RATING THIS PERIOD 12/1/90--2/29/92
PLANT OPERATIONS	2 IMP	1
RADIOLOGICAL CONTROLS	2	2 IMP
MAINTENANCE/ SURVEILLANCE	2	2
EMERGENCY PREPAREDNESS	1	1
SECURITY	1	1
ENGINEERING/ TECHNICAL SUPPORT	2	2
SAFETY ASSESSMENT/ QUALITY VERIFICATION	2	2

PLANT OPERATIONS

CATEGORY 1

- + STRONG MANAGEMENT OVERSIGHT AND SUPPORT
- + CONSERVATIVE SAFETY DECISIONS
- + EFFECTIVE IMPROVEMENT PROGRAMS
 - * IMPROVED EMERGENCY OPERATING PROCEDURES
 - * IMPROVED OPERATOR TRAINING AND QUALIFICATION
 - * SHIFT SUPERINTENDENT AND SHIFT ENGINEER POSITIONS
- + CONTROL OF PLANT ACTIVITIES
- + SHUTDOWN OPERATIONS PROTECTION PLAN
- + ENFORCEMENT HISTORY
- o OPERATOR ERRORS

RADIATION PROTECTION

CATEGORY 2 IMPROVING

- + EXCELLENT MANAGEMENT SUPPORT
- + SIGNIFICANT IMPROVEMENTS IN ALARA AND RADIATION PROTECTION PROGRAMS
 - * EFFECTIVE EXPOSURE REDUCTION TECHNIQUES
 - * CONTAMINATED AREAS REDUCED
- + INCREASED EFFECTIVENESS OF THE RADIATION PROTECTION MANAGERS AND SUPERVISORS
- + IMPROVED WORKING RELATIONSHIP BETWEEN THE RADIATION PROTECTION DEPARTMENT AND OTHER DEPARTMENTS
- + EXCELLENT PROGRAMS
 - * SOLID RADIOACTIVE WASTE CONTROL AND RADIOACTIVE MATERIALS TRANSPORTATION
 - * WATER CHEMISTRY AND RADIOCHEMISTRY ANALYTICAL
 - * RADIOACTIVE LIQUID AND GASEOUS WASTE EFFLUENTS MONITORING AND CONTROL
- o GOOD ENFORCEMENT HISTORY -- TWO PROBLEMS WITH HIGH RADIATION AREA CONTROL

MAINTENANCE/SURVEILLANCE

CATEGORY 2

- + OPERATIONS INVOLVEMENT IN MAINTENANCE PRIORITIZATION
- + PREVENTIVE MAINTENANCE
- + EQUIPMENT FAILURE TRENDING AND PREDICTIVE AND DIAGNOSTIC MAINTENANCE
- + OUTAGE PLANNING
- + SURVEILLANCE PROGRAM/IMPLEMENTATION
- + ISI PROGRAM, INSTRUMENT CALIBRATION PROCEDURES, AND WELDING PROGRAM IMPROVED
- o BACKLOG REDUCTION EFFORT
- o MAINTENANCE AT POWER
- MAINTENANCE PROCEDURES
- CONTROL OF MAINTENANCE ACTIVITIES
- COMMUNICATIONS DURING MAINTENANCE

EMERGENCY PREPAREDNESS

CATEGORY 1

- + EXCELLENT MANAGEMENT SUPPORT
- + PROGRAM CONTINUED TO IMPROVE
- + WELL TRAINED AND QUALIFIED STAFF
- + EXCELLENT STATE OF OPERATIONAL READINESS
- + VERY GOOD RESPONSE TO ACTUAL EVENTS
- + SHIFT ENGINEERS ASSISTED THE SHIFT SUPERINTENDENTS
- + EXCELLENT CORRECTIVE MEASURES FOR EXERCISE WEAKNESSES
- o PERFORMANCE DURING ANNUAL EXERCISE

SECURITY
CATEGORY 1

- + EXCELLENT MANAGEMENT SUPPORT
- + IMPROVED PROGRAM
- + SUPERIOR STAFFING AND TRAINING
- + SECURITY STAFF PROFESSIONAL AND WELL ORGANIZED
- + GOOD WORKING RELATIONSHIP BETWEEN SECURITY AND OTHER DEPARTMENTS
- + DEDICATED, PROFESSIONAL FFD STAFF
- * FULL TIME MEDICAL REVIEW OFFICER

ENGINEERING AND TECHNICAL SUPPORT

CATEGORY 2

- + PROACTIVE APPROACH TO ENGINEERING AND TECHNICAL ISSUES
- + ENGINEERING PEER GROUPS A STRENGTH
- + SYSTEM ENGINEERING
- + DESIGN ENGINEERING IDENTIFICATION AND CORRECTION OF IMPORTANT SAFETY ISSUES
- + EXCELLENT DESIGN CHANGE PACKAGES
- + INTERNAL EDSFI
- + EXCELLENT TECHNICAL SUPPORT FOR RESOLVING GENERIC SAFETY ISSUES
- + OPERATIONS/TRAINING INTERFACE
 - * INITIAL AND REQUALIFICATION EXAMINATION RESULTS
- + FORMAL TRAINING IN ROOT CAUSE ANALYSIS AND SAFETY EVALUATIONS
- o SUBMITTALS SUPPORTING LICENSING ACTIVITIES -- GOOD ENGINEERING AND TECHNICAL QUALITY
 - *INDUSTRY LEADER IN SELECTED TECHNICAL PROBLEM RESOLUTION
 - * LESS AGGRESSIVE ENGINEERING EFFORT IN LICENSING SUBMITTALS FOR SOME EXISTING PLANT ISSUES
- o EMERGENCY OPERATING PROCEDURES
- SIGNIFICANT ENGINEERING WORKLOAD BUT BACKLOG REDUCTION PROJECT ON SCHEDULE
- ERRORS IDENTIFIED IN PAST DESIGN WORK

SAFETY ASSESSMENT/ QUALITY VERIFICATION

CATEGORY 2

- + CONSERVATIVE SAFETY PHILOSOPHY --
HEALTHY QUESTIONING ATTITUDE
- + MANAGEMENT EFFECTIVENESS
DEMONSTRATED IN OPERABILITY
DETERMINATIONS, SELF ASSESSMENT, AND
CORRECTIVE ACTION PROGRAMS
- + BUSINESS PLAN
- + CONSERVATIVE AND TIMELY OPERABILITY
DETERMINATIONS
- + THOROUGH 10 CFR 50.59 REVIEWS
- + COMPREHENSIVE PROGRAM FOR HANDLING
EXTERNAL INFORMATION
- + PERFORMANCE TRENDING REPORTS
- o LICENSE AMENDMENT SUBMITTALS
GENERALLY CONSERVATIVE AND COMPLETE
-- SOME EXCEPTIONS
- o COMMUNICATIONS WITH NRC

EVALUATION CRITERIA							
	Assurance of Quality	Approach to the Resolution of Technical Issues from a Safety Standpoint	Enforcement History	Operational and Construction Events	Staffing	Effectiveness of Training and Qualifications	Category Rating
Plant Operations	+	+ +	+		+	+	1 2
Radiological Controls		+	+		+	+	2 2
Maintenance/Surveillance							2 2
Emergency Preparedness	+	+	+	+	+	+	1 1
Security	+	+		+	+	+	1 1
Engineering/Technical Support			+				2 2
Safety Assessment/Quality Verification							2 2

ANO 10/01/89 - 11/30/90 ANO 12/01/90 - 02/29/92
(Lower Right) (Upper Left)

NEXT SALP PERIOD

SCHEDULED

MARCH 1, 1992

THROUGH

MAY 29, 1993

15 MONTHS

ATTENDANCE LIST

NRC/ANO
SALP MEETING
MAY 6, 1992

<u>NAME</u>	<u>COMPANY</u>
Shirley Williamson	Entergy
Stephen J.	Entergy Operations
Darrell Rackley	Entergy Operations
Tim Mitchell	Entergy Operations
Todd Chilcoat	Entergy
Richard Gillespie	Entergy
Monty R. Manning	Entergy
Terry Waldo	Entergy
Mikel Fuller	Entergy
Jerol Garrison	DCS - Arkansas
Bobby Joe Fletcher	Entergy Operations
Richard Earl Booth	Entergy Operations
Gary Couch	Entergy Operations - MODS
Les Thone	Yell County E.S.
Teresa Madeley	Entergy
Curtis P. Shankle	Entergy
Terry Boozer	Entergy
ReNae Partridge	Entergy
Jamie D. Dudley	Entergy
Earnest Williams, Jr.	Entergy
Linda Schiede	Entergy
Damita Petty	Entergy
Wayne Cheatham	Entergy
Walt Perks	Entergy
Sheri Peterson	NRC
Danny Rader	Entergy
Dave Snellings	Entergy - ANO
Fred VanBuskirk	Entergy - ANO
Rick J. King	Entergy - ANO
Dale James	Entergy Operations
Bobby Day	Entergy Operations
A. J. Wrape, III	Entergy Operations
R. E. Green	Entergy
Phil Fisher	Entergy
David Davenport	Entergy
Tom Dickson	Entergy
Dennis Ward	Entergy
Kenneth E. Craven	Entergy - ANO
Delaine K. Heiderscheidt	Entergy - ANO
Charlotte S. Yaerger	Entergy - ANO
Greta J. Dicus	ADH
John T. Larkins	USNRC
Ronnie Howerton	EOI - ANO
Brian K. Bradshaw	EOI - ANO

NAMECOMPANY

Shawn Pierce	KXR5
Richie Chris Hare	EOI - ANO
Donald D. Moore	EOI - ANO
Breck Woodson	EOI - ANO
Kelli Riley	ANO Training
Don Bentley	EOI - ANO
D. J. Lach	EOI - ANO
C. R. Gaines	EOI - ANO
Glenn Dobbs	ANO - Design Engineering
George Holt	Entergy - ANO
Phil Baker	EOI - ANO
Kent Fancher	Entergy - ANO
Vic Hogg	Entergy - ANO
Janet Thurber	Entergy - ANO
Jason Remer	Entergy
Gene Noakes	Entergy
Keith Wire	EOI
Drake Keith	AP&L
Richard Herget	AP&L Board
Kaneaster Hodges, Jr.	AP&L Board/Entergy Board
Marie K. Bishop	Entergy Operations
Harold J. Williams, Jr.	Entergy/Security
T. L. Weir	Entergy
Jeff Speegelman	Entergy
Jim McWilliams	Entergy
Bob Bailey	Entergy
H. J. Green	SRC
Don B. Lomax	EOI
Lesa Marvin	EOI
Randy Doust	EOI
Keith Butler	Entergy
Dave Repella	Entergy Operations
Harold Hutchens	Entergy Operations
Steve Nuckols	Entergy - U-2 Maintenance
Brian J. Steinman	Entergy/NED
Bill Eaton	EOI
Fred Titus	EOI
Willis Mashburn	Entergy
Richard A. Sessoms	Entergy
Jerold Dewease	Entergy
Earl Sten	Entergy
Rick Barrow	EOI
Robert G. Wight	EOI
G. Denis Provencher	EOI
Ron Schwartz	EOI
John Martin	Entergy
Bob Fenech	Entergy
Harvey J. Jones	Wackenhut
Steven L. Smith	EOI
Bruce E. Haylock	Entergy

Larry W. Humphrey	Entergy
Jim Roberson	Entergy
Edwin E. Rogers	Entergy
Majid Kayhan	Entergy
Sherrie Cotton	Entergy
Jimmy Vandergrift	Entergy
Mike Jacobs	Johnson County Judge
Thorpe Hamilton, Jr.	Johnson County OES
Glenn Parks	Entergy
Jerry Hodges	Entergy
Larry Gould	Entergy
Rex Knight	Entergy
Sherman R. Graves	Wackenhut Security
David L. Howard	Entergy
Herbert Rideout	Entergy
Toni Sanders	EOI
Phil Love	EOI
Al Morgan	EOI
James H. Taylor	Entergy
James E. Roberts	Entergy
Tonya Terry	Russellville Realty
Tom Van Schaik	EOI
Tom Nickels	EOI
Tom Rolniak	EOI
William Cavanaugh, III	EOI
Bob Morehead	EOI
Rick Crouch	EOI
Barbara Dunn	Entergy
Leo H. Whinery, Jr.	Entergy
Mark D. Holloway	Wackenhut
Dennis Barton	EOI
Jim Rylee	Wackenhut
Don Hintz	EOI
Larry Norris	EOI
Debbie Staggs	EOI
Ed Caldwell	KARV
Marvin Vinson	Mayor - Clarksville
Jerry Yelverton	EOI
John McGaha	EOI
Jim Powell	EOI
Barbara D. Williams	EOI
Stan Robinson	EOI
Conrad Sutton	EOI
Mike Higgins	EOI
Stephen A. Kaufmann	EOI
Paul Baker	EOI
Jimmy Cole	EOI
Neil S. Carns	EOI
Linda Calloway	EOI
Gary Johnson	EOI
Woody Harris	Mayor - Russellville
Joe W. Phillips	County Judge - Russellville
Randall Ashcraft	Entergy

Tom Alexion
Robert Martin
Bill Johnson
Pat Gwynn
Linda Smith
Steve Campbell
Kathy Weaver
Melinda Turnbull

NRC - NRR
NRC - Region IV
NRC - Region IV
NRC - Region IV
NRC - Region IV - ANO site
NRC - Region IV - ANO site
NRC - Region IV - ANO site
NRC - Region IV - ANO site