



PERRY NUCLEAR POWER PLANT

10 CENTER ROAD
PERRY, OHIO 44081
(216) 259-3737

Mail Address:
P.O. BOX 97
PERRY, OHIO 44081

Donald C. Shelton
SENIOR VICE PRESIDENT
NUCLEAR

January 15, 1996
PY-CEI/NRR-2008L

Chief, Incident Response Branch
Office for Analysis and Evaluation
of Operational Data
U.S. Nuclear Regulatory Commission
Washington, D. C. 20555

Perry Nuclear Power Plant
Docket No. 50-440
NRC Administrative Letter 94-07 Request

Dear Sir:

As requested by NRC Administrative Letter 94-07, "Distribution of Site-Specific and State Emergency Planning Information", enclosed are ten (10) copies of the Emergency Public Information Calendars distributed through the local counties to the general public within the Perry Nuclear Power Plant (PNPP) 10 mile Emergency Planning Zone (EPZ).

If you have any questions or require additional information regarding these calendars or the PNPP Emergency Preparedness Program in general, please contact Mr. James D. Kloosterman - Manager, Regulatory Affairs at (216) 280-5833.

Sincerely,

Donald C. Shelton
Donald C. Shelton

GMN:sc

Enclosure

cc: NRC Project Manager
NRC Resident Inspector Office
NRC Region III

190025

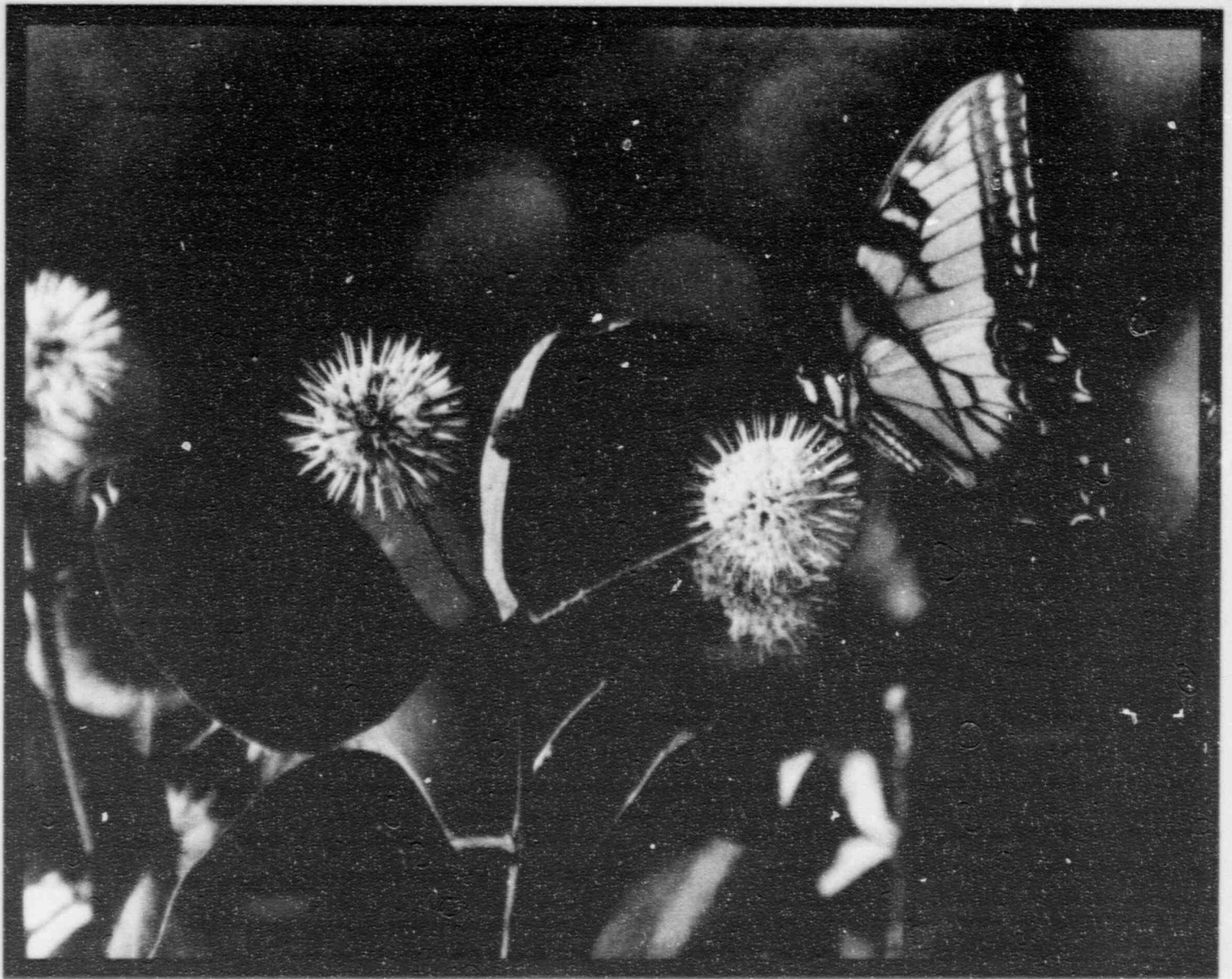
9601190152 960115
PDR ADOCK 05000440
F PDR

Operating Companies
Cleveland Electric Illuminating
Toledo Edison

A045
1/1

1996

Calendar



Important:

Please read this information. Keep it in a handy place for ready reference.

Table of Contents
Page 1

Emergency Preparedness Information

•



Dear Resident:

This calendar contains important information you will need if there is an emergency at the Perry Power Plant. That should not happen, but you need to be prepared. You can use this calendar for other kinds of man-made or natural emergencies, too.

In a Perry Power Plant emergency there might be danger from radiation. Too much radiation can be harmful to your health. If a serious accident occurs, you might need to leave the area. Response plans are explained in this calendar; they were written by the groups listed on this page.

This information is important — please read it carefully. Discuss it with your family, friends and neighbors. They may need your help, or you may need theirs. If you know someone who is blind, read this calendar to them. To receive emergency information on an audio cassette tape, contact your county or State Emergency Management Agency listed on this page. Emergency information is also in your local telephone book.

Remember that the best way to stay safe in an emergency is to know what to do. Stay calm and help each other. This calendar is designed to help you. Please keep it handy.

November, 1995

TABLE OF CONTENTS

Emergency Information

Emergency Alert System Stations 2
(also known as Emergency Broadcast System)

When The Sirens Sound

Taking Shelter
Evacuating the Area 3-4

Preparing For Any Emergency

What to Take
School Children
People With Special Needs 5-6

Why Plans Are Required 7

Public Information Hotlines 7

Four Emergency Classification Levels 8

Map/Evacuation Routes 9-10

Evacuation Information

Pick-Up Points, Referral Points,
Care Centers, Evacuating And
Receiving Schools Locations 11-16

Radiation and Nuclear Energy .. 17-18

Safety 19

Emergency Weather Information

Alert Weather Radios
Power Outage Information 19-21

Special Needs Removal Card 22

Special Needs Information Card 22-24

Edward I. Somppi
Director
Ashtabula County Emergency
Management Agency
25 West Jefferson Street
Jefferson, Ohio 44047
(216) 576-9148
1-800-228-6974

Dale B. Wedge
Director
Geauga County Emergency
Management Agency
12518 Merritt Road
Chardon, Ohio 44024-9049
(216) 285-9200

Robert H. Retzler
Director
Lake County Emergency
Management Agency
P.O. Box 480
Mentor, Ohio 44061-0480
(216) 951-5252

Dale W. Shipley
Deputy Director
Ohio Emergency
Management Agency
Ohio Department of Public Safety
2855 West Dublin Granville Road
Columbus, Ohio 43235-2206
(614) 889-7150

Donald C. Shelton
Sr. Vice President - Nuclear
Centerior
Perry Power Plant
P.O. Box 97
Perry, Ohio 44081
(216) 259-3737



Emergency Information

You May Hear A Series Of Three-Minute Siren Soundings

Listen To Your Radio/TV



When you hear an emergency siren, **TURN ON YOUR RADIO OR TV**. Sirens will be heard in the area around the Perry Power Plant. You also may be warned by loudspeakers used by local fire and police departments (see page 3). **Note: Sirens may be used during any emergency.**

The radio and TV stations listed below will carry Emergency Alert System (also known as the Emergency Broadcast System) messages that will tell you about the emergency. It may be a flood, tornado, or nuclear plant emergency. The message will tell you what to do.

Check on your neighbors too; especially the elderly or those who have difficulty seeing or hearing. **Make** certain they have received the message and know what to do. Be sure they are listening to their radio or TV.

Participating Emergency Alert System (also known as Emergency Broadcast System) Stations

Television

WEWS Cleveland	CH 5
WJW Cleveland	CH 8
WKYC Cleveland	CH 3
* WVIZ Cleveland	CH 25
WUAB Parma	CH 43
WQHS Cleveland	CH 61
WOIO Cleveland	CH 19

AM Radio

* WBKC Painesville	1460 AM
* WATJ Chardon	1560 AM
WELW Willoughby	1330 AM
WERE Cleveland	1300 AM
WFUN Ashtabula	970 AM
WKNR Cleveland	1220 AM
WRMR Cleveland	850 AM
* WWOW Conneaut	1360 AM
WWWE Cleveland	1100 AM

FM Radio

WCLV Cleveland	95.5 FM
WCRF Cleveland	103.3 FM
WENZ Cleveland	107.9 FM
WDOK Cleveland	102.1 FM
WQAL Cleveland	104.1 FM
WLTF Cleveland	106.5 FM
WZAK Cleveland	93.1 FM
WMJI Cleveland	105.7 FM
WMMS Cleveland	100.7 FM
WNCX Cleveland	98.5 FM
WGAR Cleveland	99.5 FM
WREO Ashtabula	97.1 FM
WZOO Ashtabula	102.5 FM
WKKY Geneva/Madison	104.7 FM
* WKHR Bainbridge/Cleveland	88.3 FM

* The star (*) means the station is not on for 24 hours each day. If you hear the siren when these stations are not on, tune to one that does not have a star next to it.

If Told To Take Shelter

Go inside your house or some other building. Close all the windows and doors. Turn off air conditioners and fans. Use the telephone only for emergency calls.

If Told To Evacuate

Collect the things you will need (see list on page 5). Drive away from the location of the emergency. If you need a place to stay, go to a care center (see list on page 13). If you need directions to a care center, go to a referral point (see list on page 12). If you do not have a

STAY TUNED TO YOUR RADIO OR TV FOR MORE INSTRUCTIONS.

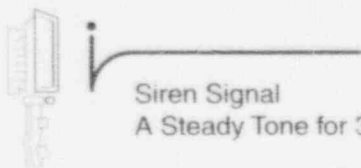
car, get a ride with a friend or neighbor, or go to a pick-up point and a bus will come for you (see pages 11 and 12). Evacuating schools will be taken to designated facilities outside the evacuation area. You can pick up your child there (see pages 14, 15 and 16).

When The Sirens Sound

How Will I Know What To Do?



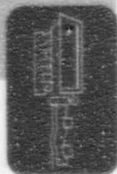
Areas around the Perry Power Plant have emergency sirens. The sirens may sound if there is an emergency. For an emergency at the Perry Power Plant, you may hear a series of siren soundings. The sound will be a steady tone and last for approximately three minutes. You also may be warned by loudspeakers used by fire and police departments. The sirens also have tones that can mean there are other types of emergencies.



Siren Signal
A Steady Tone for 3 Minutes.

When you hear a siren, **TURN ON YOUR RADIO OR TV.** Tune to a local station. These are listed on page 2. These stations will tell you what to do.

Siren Tests



The sirens will be tested at 11 a.m. on the following dates:

- Wednesday, January 10, 1996
- Wednesday, April 10, 1996
- Wednesday, July 10, 1996
- Wednesday, October 9, 1996

You need not respond to the test.*

Local advertising and newspaper articles will advise you of tests in advance. But times may arise when a siren will malfunction or sound inadvertently. If you hear an emergency siren and

- ▲ you have not been told of a test
- ▲ it sounds for more than five minutes
- ▲ it goes on and off several times

Call one of the following numbers and report it:

DO NOT call Centerior, the Police, or the Fire Department for information. They need telephone lines open for official calls. Instead, call the Public Information Hotline numbers listed on page 7.

Emergency workers will check to see if you know about the emergency. That is why a green "WE HAVE BEEN NOTIFIED" card is enclosed in this calendar (see last page). To show that you know about the emergency and DO NOT need assistance, put your green "WE HAVE BEEN NOTIFIED" card in a window. Be sure it can be seen from the road. If you don't have a card, or you misplaced it, tie a towel to your door or mailbox or other object visible from the road. Check on neighbors as time permits, especially those who could need assistance. Confirm that they have received the emergency message and know what to do.

Ashtabula County

Emergency Management Agency (216) 576-9148
1-800-228-6974
Sheriff's Department (216) 576-0055

Geauga County

Emergency Management Agency (216) 285-9200
Sheriff's Department (216) 286-1234

Lake County

Emergency Management Agency (216) 951-5252
Sheriff's Department (216) 953-5391

*If you cannot hear the sirens while standing outside, please report this to the appropriate emergency management agency listed above.

What Should I Do If I'm Told To Take Shelter?



- ▲ Go indoors and stay there. Shelter pets.
- ▲ Listen to your local Emergency Alert System (also known as Emergency Broadcast System) radio or television station for emergency information.
- ▲ Close all windows, doors, and air intakes (for example: exhaust window fans and fireplace dampers).
- ▲ Turn off air conditioners and exhaust window fans.
- ▲ You might need to warn a friend or family member. If so, limit time spent outdoors. While outdoors, cover your mouth and nose with a damp cloth or towel. When returning indoors, leave outer clothing outside. Wash your face and hands with mild soap and lukewarm water.
- ▲ Children in affected schools will be sheltered there, if necessary. Parents should not try to pick them up unless advised to do so.
- ▲ Use the telephone only if necessary.
- ▲ Begin storing water in containers for drinking and cooking.
- ▲ Do not pick produce or fruit. Food or produce already in your home is safe to eat.
- ▲ Put the green **"WE HAVE BEEN NOTIFIED"** card in a window facing the street. (The green card is the last page in this calendar.) If you don't have a card, or you misplaced it, tie a towel to your door or mailbox or other object visible from the road. This tells emergency workers going door-to-door that you know about the emergency. If you DO need assistance, DON'T use the green card or towel.
- ▲ If your assistance needs change after you have displayed the green card or a towel, remove it from view. Then notify your county Emergency Management Agency. See phone numbers on page 6.

What Should I Do if I'm Told To Evacuate The Area?



- ▲ Listen for instructions on a local Emergency System (also known as Emergency Broadcast System) station.
- ▲ Prepare your home for a three-day absence; turn off small appliances, faucets, and lights. Turn down the furnace, if it is on. Be sure all air conditioners and fans are off. Lock windows and doors.
- ▲ Gather the people in your home. Do not try to pick up children or relatives in schools, hospitals or nursing homes. These facilities have their own emergency procedures.
- ▲ Pack necessities. You will find a list on page 5.
- ▲ Put the green **"WE HAVE BEEN NOTIFIED"** card in a window facing the street. (The green card is the last page in this calendar.) If you don't have a card, tie a towel to your door, mailbox, or other object visible from the road. This tells emergency workers going door-to-door that you know about the emergency. If you DO need assistance, DON'T use the green card or towel.
- ▲ If you have special needs and have already informed officials, special services will be provided. If you have not informed officials, do not place the green card in a window.
- ▲ If your assistance needs change after you have displayed the green card or a towel, remove it from view. Then notify your county Emergency Management Agency. See phone numbers on page 6.
- ▲ If you have pets or livestock, see page 6.
- ▲ Leave when advised. Use one car per family. Close all car windows and vents. Listen to Emergency Alert System (also known as Emergency Broadcast System) stations for traffic information and proceed to a place of your choice or to a care center. Use the map on pages 9 and 10.
- ▲ Law enforcement officials will control traffic and maintain security in evacuated areas.
- ▲ If you do not drive, get a ride from a friend or neighbor. Or go to a pick-up point (see pages 11 and 12) and a ride will be provided for you.

Preparing For Any Emergency

Prepare in advance for emergencies. Keep emergency supplies in a place known to all family members. Read this calendar. Study the map on pages 9 and 10.

Keep important papers in a safe place. Keep your car filled with fuel. Make a list of things you would take in an emergency. Add them to the list below.

What Should I Take With Me?



Take the things in this list:

- Needed medicines
- Baby food and formula
- Credit cards, checkbook, cash, and important papers
- Two changes of clothing per person
- An extra pair of shoes per person
- Two blankets or a sleeping bag per person
- Toiletries
- Eyeglasses or contacts

- Battery-powered radios
- Batteries
- Flashlight
- First aid kit
- This calendar
- _____
- _____
- _____

Where Should I Go?

You can go to a place of your choice. This may be to a friend's or relative's house. You may want to stay at a care center (see page 13). Go to a referral point if you need directions (see page 12).

The care centers will have food, water, medical and social services. They will help you locate family members. They will have a list of people staying there.

Where Will Referral Points and Care Centers Be?

Referral points and care centers are shown on a map on pages 9 and 10. Referral points are listed on page 12. Care centers are listed on page 13.

How Do I Get There?

Drive your own car. Take only one car per family. If you have room, you may offer a ride to someone without a car. Use the most direct evacuation route (See the map on pages 9 and 10).

What If I Don't Have A Ride?

If you do not have a car, get a ride from a neighbor or friend who has room. If this is not possible, proceed to a pick-up point listed on pages 11 and 12. The county will provide rides for those who need them.

What About Children In School?



Complete information is available from your school. Children will be cared for at receiving schools until parents come for them. Evacuating and receiving schools are listed on pages 14, 15, and 16. Local radio and TV stations also will tell you the names of these schools. During an emergency, you can also get this

information at referral points. Referral points are listed on page 12. The information is available from your school district.

Pre-schools and day-care centers may also have emergency plans. Call the pre-school or day-care center your child attends to learn more.

What About Patients In Hospitals and Nursing Homes?



Information will be available from hospitals, nursing homes, and your county Emergency Management Agency as to where patients will be transferred if an evacuation is recommended.

What About The Elderly and Handicapped?



There will be special assistance for those who need help to leave the area. If you or someone you know may need help, fill out the appropriate card in this calendar, pages 22-24. MAIL IT TODAY. The county will get help to you if you need to evacuate.

To Learn More, Or If Your Special Needs Change, Call:

Ashtabula County
Emergency Management Agency (216) 576-9148
1-800-228-6974

Geauga County
Emergency Management Agency (216) 285-9200

Lake County
Emergency Management Agency (216) 951-5252

What About Pets? What About Guide Dogs?



Pets

You may not take your pets with you to a care center. Plan now for your pet's care in any emergency. It is recommended that you make prior arrangements with friends, relatives, or pet boarding facilities. If you need more information, call your county Emergency Management Agency.

Guide Dogs

You may take your guide dog with you to a care center. It is recommended that you pack supplies in advance to care for your guide dog. If you need more information, call your county Emergency Management Agency.

What If I Have Livestock To Care For?



LISTEN TO YOUR RADIO OR TV FOR INSTRUCTIONS

If there is an emergency, you may be told to put livestock indoors and give them stored feed and ground water.

If told to evacuate, leave your livestock on the farm. Put them in a barn or other shelter, and leave them with water and food. Plan now for livestock care during any emergency.

Federal and State agencies will do follow-up surveys of farm products to check for contamination. For more information, contact Ohio State University Extension Service. For a copy of the "Radiological Emergency Information for Agricultural Producers, Processors, and Distributors" brochure, contact the State of Ohio Emergency Management Agency, Ohio Department of Public Safety, 2855 West Dublin Granville Road, Columbus, Ohio 43235-2206. Phone (614) 889-7150.

Why Plans Are Required

Why Do We Need Emergency Plans?

The law requires emergency plans for every nuclear plant. These plants have been making electricity for more than 35 years. In all that time, no member of the public has been hurt as a result of an accident at a U.S.

nuclear power plant. But it is best to be prepared. Your county and State Emergency Management Agencies have emergency preparedness plans.

What Would Cause An Emergency At The Perry Power Plant?

An unusual series of equipment failures or other events could cause an emergency. If radiation might leak from the plant, steps would be taken to protect the public.

But your county's and State's preparedness plans cover any kind of emergency ... man-made or natural.

How Wide An Area Would Be Affected?

A severe emergency could affect an area several miles from the Perry Power Plant. This could happen if radiation was released and spread by the wind. If the wind is calm, only people closer to the plant might need to take action.

county and State Emergency Management Agencies have plans to protect people in this zone, but they can be expanded to include an area considerably beyond 10 miles. These plans will be used if there is an emergency. Key parts of the plans are described within this calendar.

Who Decides What The Public Should Do In An Emergency?

The area within about 10 miles from the Perry Power Plant is called the Emergency Planning Zone. Your

Your county officials decide what you should do. They will be advised by the groups listed on the back cover. Boaters on Lake Erie will be warned by federal and state agencies.



Public Information Hotlines



A public information hotline will be open during an emergency. It will have current information. To use it, call one of these numbers:

Ashtabula County	(216) 576-9148 1-800-228-6974
Geauga County	(216) 285-2210
Lake County	(216) 953-5469 (216) 953-5470
Centerior	1-800-686-2121

State of Ohio Public Information Hotline number will be announced at the time of an emergency.

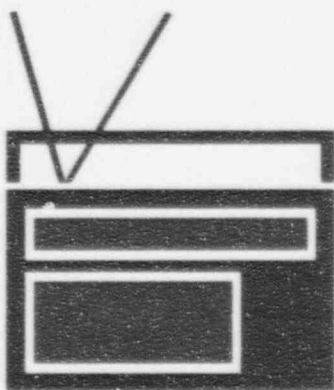
To Learn More, Or If Your Special Needs Change, Call:

Ashtabula County
Emergency Management Agency (216) 576-9148
1-800-228-6974

Geauga County
Emergency Management Agency (216) 285-9200

Lake County
Emergency Management Agency (216) 951-5252

There Are Four Emergency Classification Levels At Nuclear Plants



1

Unusual Event

A small problem has occurred. No radiation leak is expected. Federal, state, and county officials will be told right away. You will not have to do anything.

2

Alert

This is also a minor problem. Small amounts of radiation could leak within the plant. This will not affect you. Federal, state, and county officials will be told right away; they will stand by. You should not have to do anything.

3

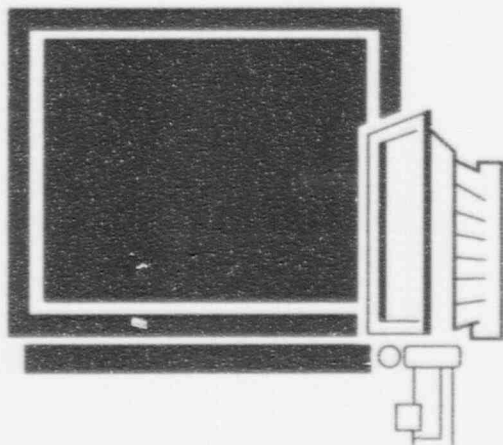
Site Area Emergency

This is a more serious problem. Small amounts of radiation could leak from the plant. If needed, the sirens will be sounded. If you hear the sirens, listen to local radio or TV stations that carry EAS (also known as the Emergency Broadcast System) messages. Federal, state, and county officials will be told right away. They will help if you need to act.

4

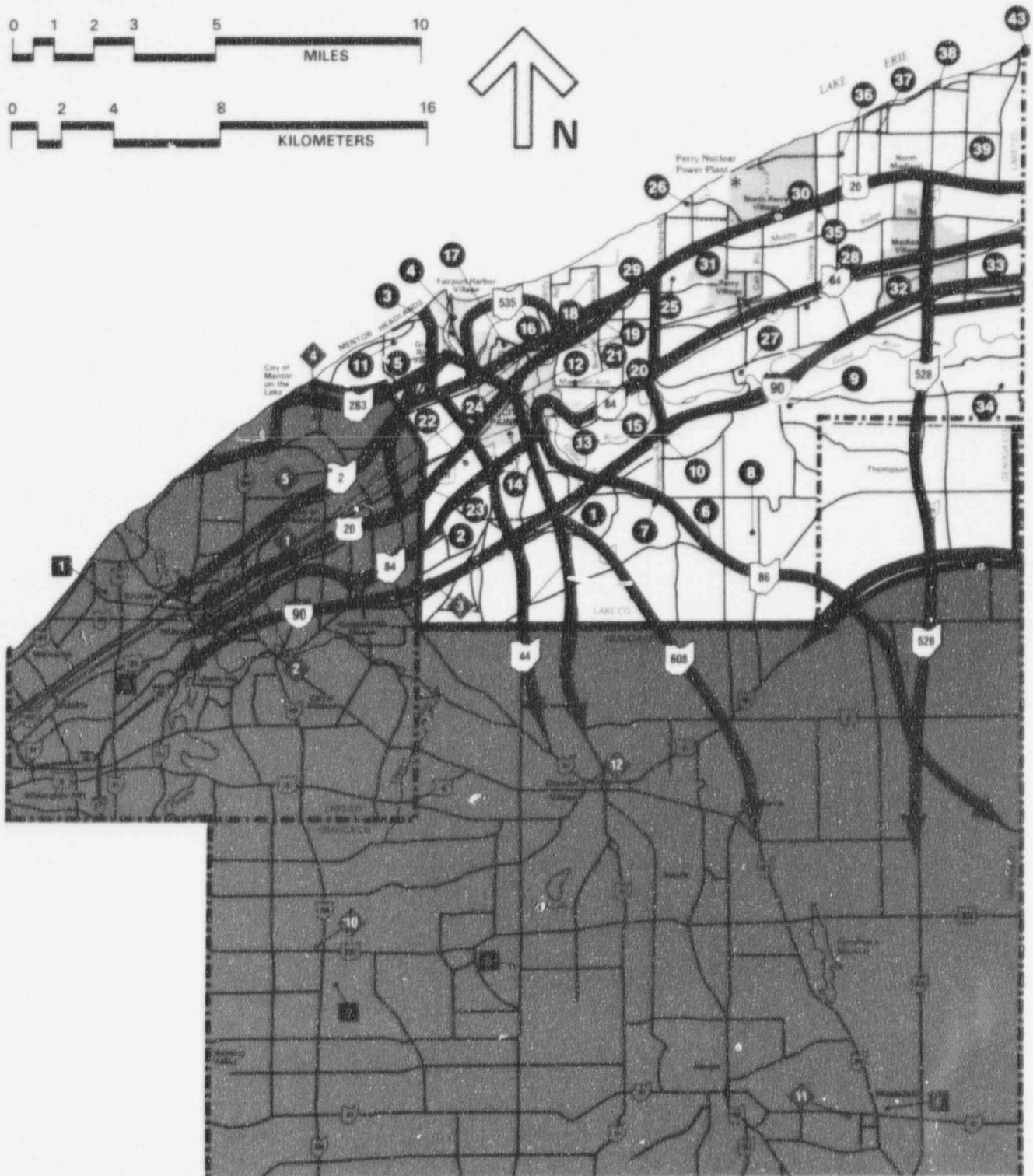
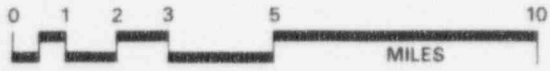
General Emergency

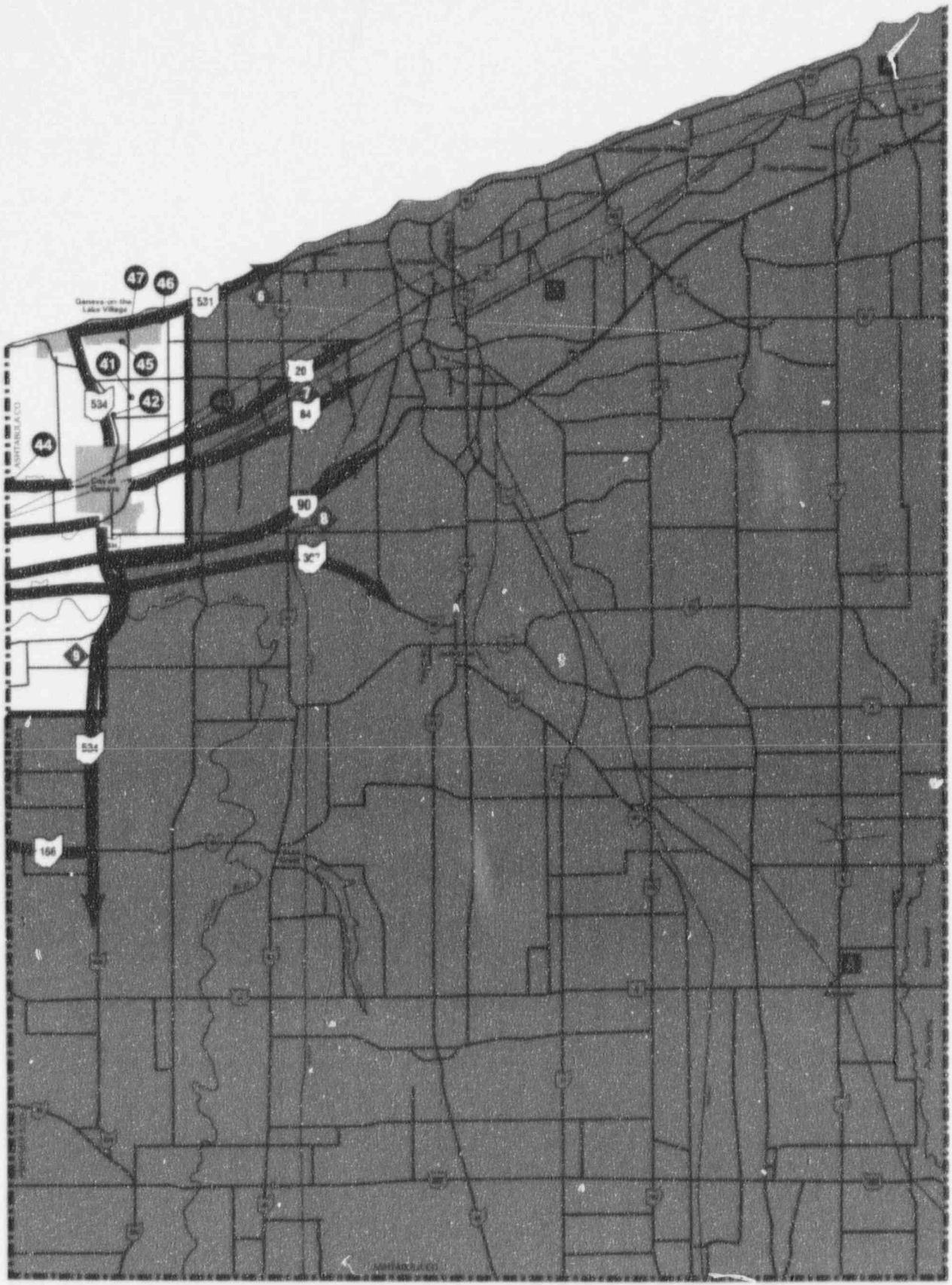
This is the most serious problem. Radiation could be released outside the plant. Federal, state, and county officials will work with plant officials. You may have to protect yourself as described in this calendar. The sirens will sound. If you hear the sirens, listen to your local radio or TV station for instructions.



LEGEND

- Pick-up Point
- ◆ Referral Point
- Care Center
- ➔ Evacuation Route
- - - - - County Boundary
- ⬆ Expressway
- ⬆ U.S. Route
- ⬆ State Route
- Emergency Planning Zone Boundary





**For Residents Of
The Emergency
Planning Zone**

Evacuation Information

Pick-Up Points For People Who Need A Ride

Pick-Up Points In Lake County

If you need a ride during an evacuation, go to one of these places. You will be picked up there, or call (216) 953-5480.

- 1 Township Hall, Concord Twp.
- 2 Concord Plaza Shopping Center, Concord Twp.
- 3 Former St. Anthony's School Building, Fairport Harbor
- 4 Senior Citizen Center, Fairport Harbor
- 5 M.H. Branch of Lake County Mental Health, Grand River
- 6 Leroy Elementary School, Leroy Twp.
- 7 Five Points Intersection, Leroy Twp.
- 8 American Mutual Life Association Park, (AMLA), Leroy Twp.
- 9 Balch Road and Trask Road, Leroy Twp.
- 10 Vrooman Road and I-90, Leroy Twp.
- 11 Sterling Morton Elementary School, Mentor
- 12 Veterans Park, Painesville City
- 13 Hobart Middle School, Painesville City
- 14 Cedarbrook Elementary School, Painesville City
- 15 State Street Elementary School, Painesville City
- 16 Lathrop Elementary School, Painesville City
- 17 Huntington Elementary School, Painesville City
- 18 Stage Avenue and Richmond Street, Painesville City
- 19 Route 20 and Bacon Road, Painesville Twp.
- 20 Riverside High School, Painesville Twp.
- 21 Madison Avenue School, Painesville Twp.
- 22 Parking Lot Behind Painesville Shopping Center, Painesville Twp.
- 23 C.C. Hadden School, Painesville Twp.
- 24 Florence Avenue and Route 283, Painesville Twp.
- 25 Narrows Road and Center Road, Perry Village
- 26 Camp Roosevelt, Perry Twp.
- 27 Outdoor Family Center, Perry Twp.
- 28 South Ridge Nursing Home, Perry Twp.
- 29 Route 20 and Lane Road, Perry Twp.
- 30 Route 20 and Antioch Road, North Perry Village
- 31 Perry High School, Perry Village
- 32 Madison Village Square, Madison Village
- 33 Stewart Lodge, Madison Twp.
- 34 Camp Stigwandish, Madison Twp.
- 35 Route 20 at Townline Road, Madison Twp.
- 36 Lockwood Road and McMackin Road, Madison Twp.
- 37 Green Road and Chapel Road, Madison Twp.
- 38 Hubbard Road and Lake Road, Madison Twp.
- 39 Route 20 and Hubbard Road, Madison Twp.

Pick-Up Points For People Who Need A Ride (Continued)

Pick-Up Points in Ashtabula County

If you need a ride in an evacuation, go to one of these places. You will be picked up there, or call 1-800-228-6974 or (216)576-9148.

- 40 Trailer Park at Route 20 and Myers Road
- 41 Austin Mobile Homes, Austin Road
- 42 State Route 534 and Maple Avenue
- 43 County Line Road and Lake Road
- 44 County Line Road and Route 20 West

- 45 Geneva-on-the-Lake Golf Course Parking Lot
- 46 Indian Creek Resort Parking Lot
- 47 Geneva Township Park

Pick-Up Points in Geauga County

The County will provide rides for those who need them. You will be picked up at home. Call (216) 285-2210 if you need a ride.

Referral Points

If there is an evacuation, referral points are set-up at the following places. They can give you directions to a care center. Other referral points will be used if needed. Their locations will be announced on local radio and TV stations.

Referral Points in Lake County

- 1 **Great Lakes Mall (East end)**
Route 20 (Mentor Avenue)
Mentor, Ohio
- 2 **Great Lakes Mall (East end)**
Route 84 (Johnnycake Ridge)
Mentor, Ohio
- 3 **Rest Area on I-90 Westbound**
2½ miles west of Route 44
Concord Township, Ohio
- 4 **Mentor Shore School**
North Hopkins Road
Mentor, Ohio
- 5 **FirstMerit Bank**
6725 Center Street (Rt. 615)
Mentor, Ohio

Referral Points in Ashtabula County

- 6 **Kister Plaza**
Routes 531 and 45
Saybrook, Ohio
- 7 **Crossroad Plaza**
Routes 20 and 45
Saybrook, Ohio
- 8 **Burger King**
Routes 90 and 45
Austinburg, Ohio
- 9 **Cork Elementary School**
Route 534
Harpersfield, Ohio

Referral Points in Geauga County

- 10 **West Geauga Plaza**
North West Corner of Routes 306 and 322
Chesterland, Ohio
- 11 **Harrington Plaza**
Route 87 (1/2 mile from Route 608)
Middlefield, Ohio
- 12 **Maple Leaf Plaza**
Route 44, West of Cherry Street
Chardon, Ohio

Evacuation Information (Continued)

Care Centers

The following places become care centers in the event of an evacuation. Other centers will be opened if required. Their locations will be announced on local radio and TV stations. Referral points will also have this information.

Care Centers in Lake County

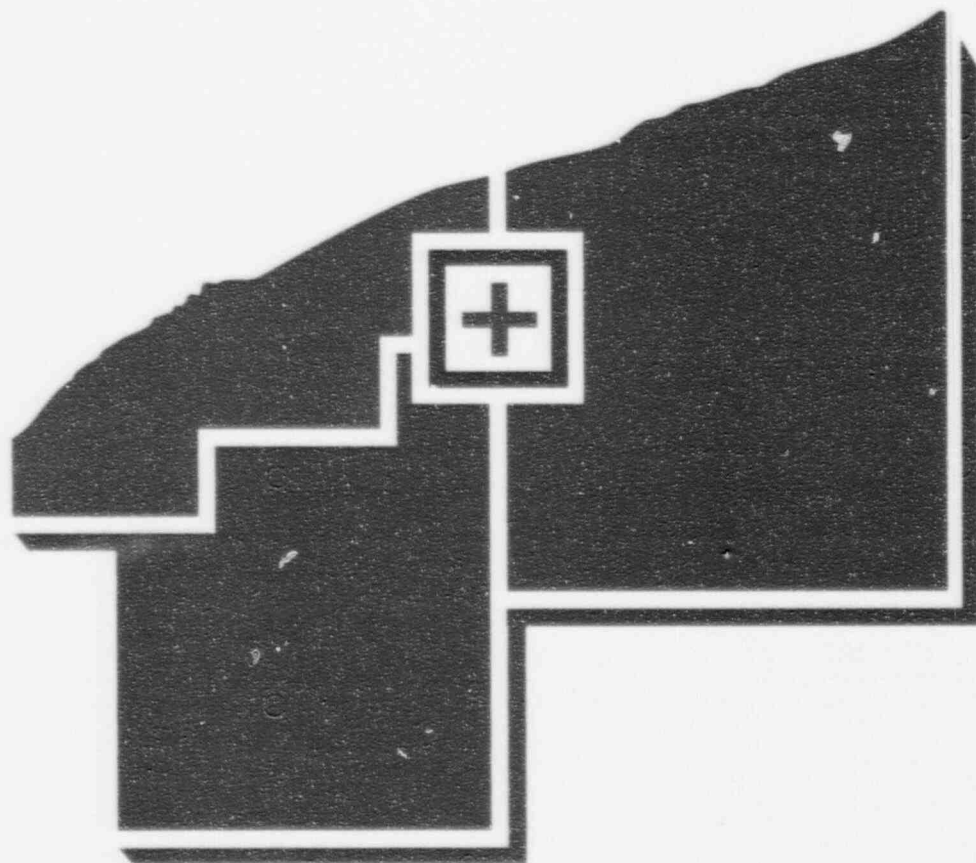
- 1** North High School
34041 Stevens Blvd.
Eastlake, Ohio
- 2** South High School
5000 Shankland Road
Willoughby, Ohio

Care Centers in Ashtabula County

- 3** Edgewood Senior High School
2428 Blake Road
Ashtabula, Ohio
- 4** Rowe Middle School
360 Rowe Street
Conneaut, Ohio
- 5** Pymatuning Valley Middle School
U.S. Route 6
Andover, Ohio

Care Centers in Geauga County

- 6** Cardinal High School
14785 Thompson Ave.
Middlefield, Ohio
- 7** West Geauga High School
13401 Chillicothe Road
Chesterland, Ohio
- 8** Notre Dame-Cathedral Latin
13000 Auburn Road
Chardon, Ohio



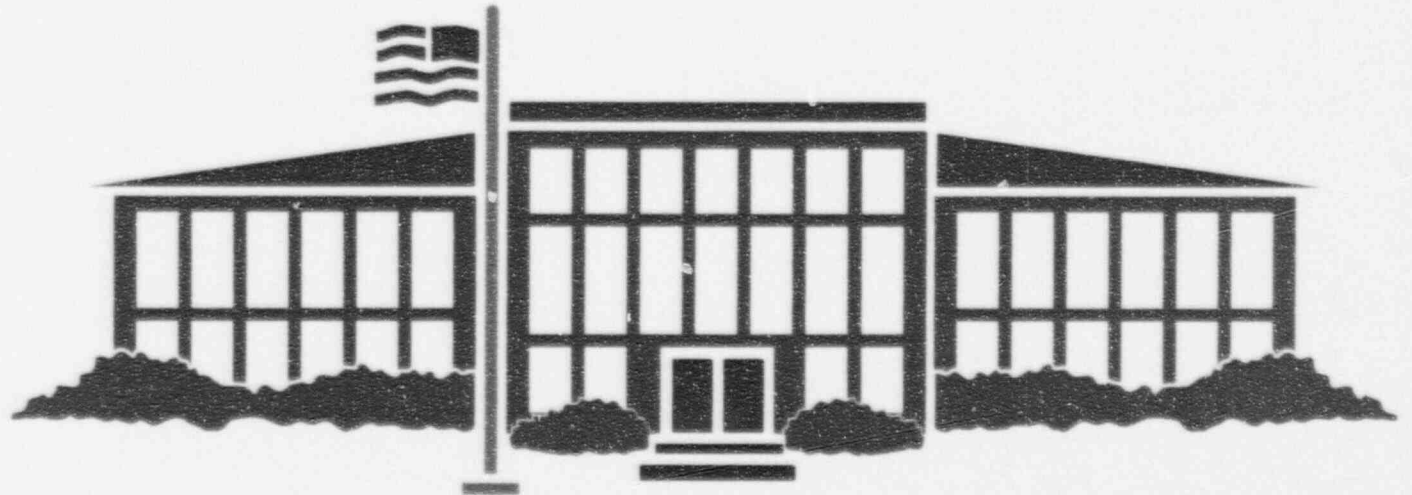
Evacuating And Receiving Schools Locations

Ashtabula County

School District	Evacuating School	Receiving School	Receiving School Address
Geneva	Geneva Jr./Sr. High	Jefferson High	125 S. Poplar St., Jefferson
	Geneva Elementary	Jefferson Elementary	108 E. Jefferson St., Jefferson
	Krzic Elementary	Ashtabula Joint Vocational	1565 State Route 167, Jefferson
	Cork Elementary	Ashtabula Joint Vocational	1565 State Route 167, Jefferson
	Spencer Elementary	Ashtabula Joint Vocational	1565 State Route 167, Jefferson
	Assumption School	Jefferson Elementary	108 E. Jefferson St., Jefferson

Geauga County

School District	Evacuating School	Receiving School	Receiving School Address
Ledgemont	Ledgemont High	Ledgemont Elementary	16200 Burrows Rd., Thompson



**Evacuating And
Receiving Schools
Locations (continued)**

Lake County

School District	Evacuating School	Receiving School	Receiving School Address
Madison	Madison High (9 & 10)	Ashtabula West Jr. High	1231 W. 47th, Ashtabula
	Madison High (11 & 12)	Ashtabula High	401 W. 44th, Ashtabula
	Madison Middle (6)	Ashtabula Chestnut Elem.	5321 Chestnut Ave., Ashtabula
	Madison Middle (7 & 8)	Ashtabula Columbus Jr. High	1306 Columbus Ave., Ashtabula
	Red Bird Elementary (K, 1, 2)	Ashtabula State Rd. Elem.	4200 State Rd., Ashtabula
	Red Bird Elementary (3, 4, 5)	Ashtabula Thurgood Marshall Elem.	3703 Station Rd., Ashtabula
	North Madison Elem. (K, 1, 2)	Ashtabula T. Jefferson Elem.	2630 W. 13th, Ashtabula
	North Madison Elem. (3, 4, 5)	Ashtabula Washington Elem.	917 Lake Ave., Ashtabula
	Homer Nash Kimball Elem.	Ashtabula McKinsey Elem.	1113 Bunker Hill Rd., Ashtabula
	Memorial Complex Preschool	Ashtabula McKinsey Elem.	1113 Bunker Hill Rd., Ashtabula
Perry	Perry High	Chardon High	151 Chardon Ave., Chardon
	Perry Middle	Chardon Middle	424 North St., Chardon
	Perry Elementary	Chardon Maple Elem.	308 Maple Ave., Chardon
Fairport	Harding High	Kirtland Middle	9152 Chillicothe Rd., Kirtland
	McKinley Elementary	Kirtland Elementary	9140 Chillicothe Rd., Kirtland
Mentor	Headlands Elementary	Mentor Lake Elementary	7625 Pinehurst Rd., Mentor
	Sterling Morton Elementary	Mentor Reynolds Elementary	6176 Reynolds Rd., Mentor
	St. Gabriel	St. Mary's Church (Mentor)	8560 Mentor Ave., Mentor

**Evacuating And
Receiving Schools
Locations (continued)**

Lake County (continued)

School District	Evacuating School	Receiving School	Receiving School Address
Painesville City	Harvey High	Willoughby/E. Tech. Center	25 Public Square, Willoughby
	Hobart Middle	Willoughby Middle School	36901 Ridge Rd., Willoughby
	State St. Elementary	Willoughby McKinley Elem.	1200 Lost Nation Rd., Willoughby
	St. Mary	Willoughby Edison Elem.	5288 Karen Isle Dr., Willoughby
	Huntington Elementary	Eastlake Jefferson Elem.	35980 Lake Shore Blvd., Eastlake
	Lathrop Elementary	Eastlake Jefferson Elem.	35980 Lake Shore Blvd., Eastlake
	Our Shepherd Lutheran	Eastlake Jefferson Elem.	35980 Lake Shore Blvd., Eastlake
	Cedarbrook Elementary	Willoughby Grant Elem.	38281 Hurricane Dr., Willoughby
	Phillips-Osborne School	Eastlake Jefferson Elem.	35980 Lake Shore Blvd., Eastlake
Painesville Township	Auburn Career Center	Mentor Ridge Jr. High	7860 Johnaycake Ridge Rd., Mentor
	Riverside High	Mentor High	6477 Center St., Mentor
	J.R. Williams Jr. High	Mentor High	6477 Center St., Mentor
	Auburn Middle School	Mentor High	6477 Center St., Mentor
	Leroy Elementary	Andrews School	38588 Mentor Ave., Willoughby
	Seventh Day Adventist	Andrews School	38588 Mentor Ave., Willoughby
	Hale Road Elementary	Lake Catholic High	6733 Reynolds Rd., Mentor
	Madison Ave. Elementary	Andrews School	38588 Mentor Ave., Willoughby
	Hershey Montessori	Bellflower Elementary	6655 Reynolds Rd., Mentor
	Buckeye Elementary	Lake Catholic High	6733 Reynolds Rd., Mentor
	Melridge Elementary	Andrews School	38588 Mentor Ave., Willoughby
	Clyde C. Hadden Elem.	Lake Catholic High	6733 Reynolds Rd., Mentor
	Painesville Christian Academy	Mentor Church of the Nazarene	7550 Bellflower Rd., Mentor

NOTE: Private and parochial schools are listed under the public school districts where they are located.

Radiation and Nuclear Energy

Sources of Radiation

Everything on earth is made up of tiny particles called atoms. Some atoms give off radiation. People cannot see, taste, feel, hear, or smell radiation, but instruments can detect it.

We are exposed to small amounts of radiation every day. It is in the air we breathe. It is in the food we eat. It is even inside our own bodies. It is normal to be exposed to small amounts of radiation. But to be safe, you should limit the amount.

Radiation doses to people are measured in millirem.

The average American receives over 300 millirem of radiation a year from natural sources.

Radiation also comes from man-made sources. It is used by doctors and dentists. It is used in other helpful ways, too.

Radiation levels at nuclear plants are checked constantly. The law limits levels released from a plant. If you would like more information on radiation, write to Centerior, Perry Power Plant, Emergency Planning, P.O. Box 97, Perry, Ohio 44081.

Examples of Radiation Doses:

The earth and air:	56 millirem a year
Natural radioactivity in the body:	39 millirem a year
Building materials (brick or stone):	3.6 millirem a year
Chest X-rays:	6 millirem each
Color TV:	less than 1 millirem a year

Source: National Council on Radiation Protection and Measurements (NCRP Report No. 93), 1987.

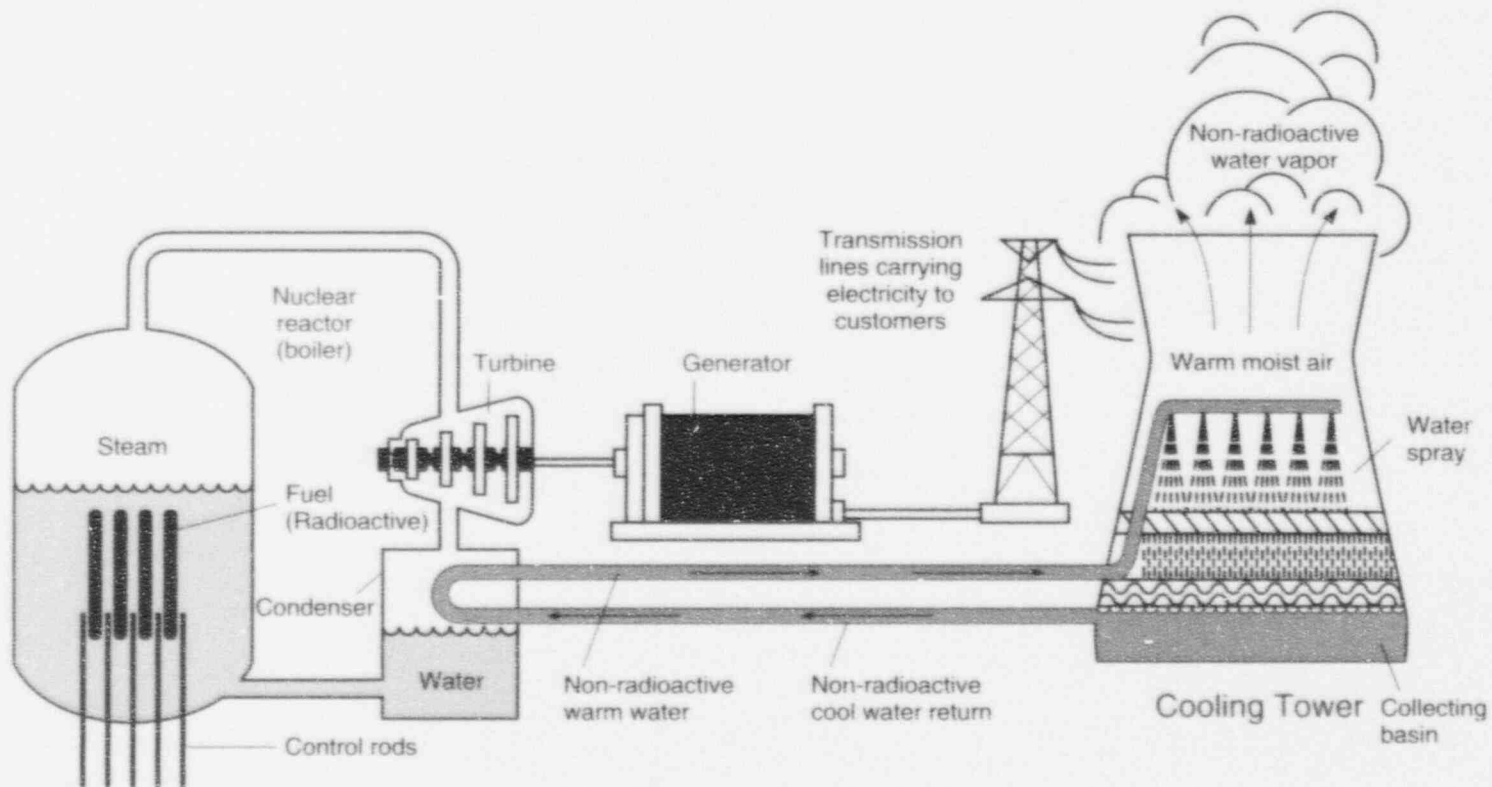


Nuclear Energy

The energy of the atom is called nuclear energy.

A nuclear energy plant is much like a power plant that burns coal or oil. The difference is the source of heat. At the Perry Power Plant, heat comes from uranium instead of coal or oil. Uranium atoms are split to produce heat. The heat is used to boil large amounts of water. The water is turned into steam.

The steam runs a turbine-generator to make electricity. When uranium atoms are split, radiation is produced. Normally, a nuclear power plant releases very small amounts of radiation as a gas. At most, this will add only one or two millirem to the normal dose received by people who live near the plant. This radiation is less than the limit set by law. No radiation is released from cooling towers.

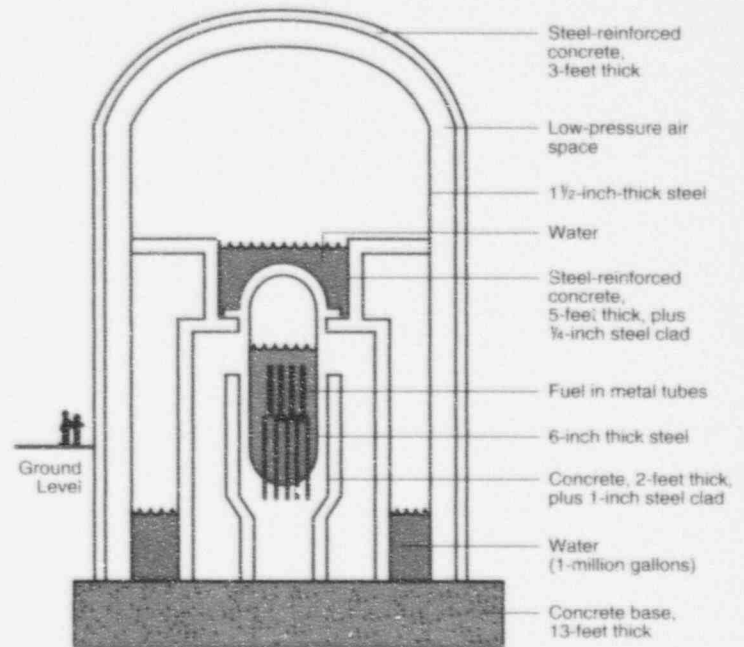


Safety Built In

When a nuclear power plant makes electricity, its fuel becomes more radioactive. But the plant is built to protect the public. The fuel is kept in special metal tubes. The tubes are kept in a steel reactor. Around this are thick walls of concrete and steel.

Only a very rare accident could allow too much radiation to escape from a plant. This kind of accident has never occurred in the United States.

In 1979 an accident occurred at the Three Mile Island Plant in Pennsylvania. Larger than normal amounts of radiation were released. However, studies showed they were too small to be a hazard to the public. The highest radiation dose could have been 85 millirem. Only a person who would have stood in the open, day and night, right across the river from the plant could have received that dose. It is about the same as the extra radiation people would receive if they lived in Denver, Colorado for a year. Denver is at a higher altitude. This means people are exposed to more radiation from the sun than those who live closer to sea level.



Emergency Weather Information

Weather related emergencies — storms, tornadoes, blizzards, flooding, — are some of the kinds of emergencies that could happen in this area. These emergencies can be a threat to residents and visitors. The following information will help prepare your family in the event of a weather related emergency.

STORM SAFETY



Thunderstorms can happen at anytime. Severe thunderstorms can bring heavy rains, high winds, and lightning.

When severe thunderstorms threaten your area, listen to your local radio or TV station. These stations will provide updated information. You should know the following terms used to describe storm threats:

SEVERE THUNDERSTORM — Conditions are right for a severe storm.

SEVERE THUNDERSTORM WARNING — A severe storm has been observed or has been detected by radar.

Take these steps when severe thunderstorms or lightning are a threat.

- Get inside a home, large building, or car (not a convertible).
- Do not use the telephone, except for emergencies. Do not use bathtubs, water faucets and sinks. Metal pipes can conduct electricity.
- A car offers some protection from lightning, but can be a dangerous place to be during a flash flood or tornado.

If you are outside, and there is no time to reach a safe building or car, follow these rules:

- Do not stand under a tall tree in an open area, a hilltop, in an open field, or on the beach.
- Get away from open water.
- Get away from tractors and other metal farm equipment.
- Get away from motorcycles, bicycles, golf carts, and scooters. Do not hold metal objects, such as golf clubs.

Emergency Weather Information (Continued)

TORNADOES



A tornado is a violent storm with whirling winds of up to 300 miles per hour. A tornado spins like a top and may sound like the roaring of an airplane

or train. Sirens may sound. When you hear a siren, turn on your radio or TV. Tune to a local station. These stations will provide updated information and tell you what to do. You should know the following terms used to describe tornado threats:

TORNADO WATCH — A tornado may occur in or near your area. Listen to a radio or television station listed on page 2 of this calendar, or another local station in your area. These stations will provide updated information.

TORNADO WARNING — A tornado has been seen, or has been shown by radar. If a tornado warning is given for your area, take shelter immediately.

■ **IF YOU ARE AT HOME** — go to a corner of your basement and take cover under something sturdy. If your home has no basement, take cover in a small room (such as a closet or bathroom) or under sturdy furniture on the lowest floor in the center part of the house. Stay away

from windows. Do not remain in a trailer or mobile home if a tornado is approaching; take cover elsewhere in a nearby shelter or lie flat in the nearest ditch, ravine, or depression.

■ **IF YOU ARE IN A BUILDING** — go to an inside hallway on the lowest floor, or to a designated shelter area.

■ **IF YOU ARE OUTSIDE** — take cover and lie flat in the nearest ditch and cover your head with your arms.

■ **IF YOU ARE IN A CAR** — get out and take shelter in the nearest ditch, ravine, or culvert and cover your head with your arms.

WINTER STORMS



Areas that normally have mild winters can be hit with a major snow storm, extreme cold or blizzards. You should know the following terms used to

describe winter weather conditions:

WINTER WEATHER ADVISORY — winter weather conditions, such as cold, ice, and snow are expected to delay travel, cause major problems, or create other types of dangerous conditions.

WINTER STORM WATCH — heavy accumulations of snow or ice are possible.

WINTER STORM WARNING — heavy snow, sleet, or freezing rain are expected.

BLIZZARD WARNING — heavy snow, winds, and dangerously low temperatures are expected. Blizzards can cause severe weather conditions such as zero visibility and life threatening wind chill.

WHAT TO DO

■ Listen to a radio or television station listed on page 2 of this calendar, or another local station. They will provide updates on weather conditions.

■ Keep a battery powered portable radio in working order; keep extra batteries.

■ Have flashlights, battery powered lamps and extra batteries.

■ Keep antifreeze in your car's radiator. Carry a winter car kit that includes the following:

Flashlight

Tow chain or rope

Shovel

Bag of sand or salt

Extra mittens, gloves, hats, boots

Windshield scraper

Blanket

Emergency flares

If a blizzard traps you in your car:

■ Pull off the highway, stay calm and remain in your vehicle.

■ Do not set out on foot. A building may seem close but be too far to walk in a deep snow.

■ Set your hazard lights to "flashing" and hang a cloth or distress flag from the window or radio antenna.

■ If you run your car engine to keep warm, open a window slightly for ventilation. This will protect you from possible carbon monoxide poisoning. Keep snow cleared away from the exhaust pipe.

NOTE: Be careful not to use up battery power. Balance the use of radio, heat, and lights.

■ In extreme cold, use road maps, seat covers, and floor mats for warmth. Use your coat as a blanket.

ALERT WEATHER RADIOS

are another means of learning about emergency conditions. They are available from local electronic stores. Many different models are available but tone alerting models are recommended for those who wish to purchase the radios. These radios will activate if there is a weather emergency or an emergency at a nuclear power plant. It is important that owners of these radios tune to their Emergency Alert Station (also known as Emergency Broadcast System) upon hearing the tone on the alert weather radios.

Emergency Weather Information (Continued)

FLOODING



Floods are the most common and widespread of all natural hazards. Some floods develop over a period of days, but flash floods can result in raging water in just a few minutes. Sirens may sound. When you hear a siren, turn on your radio or TV. Tune to a local station. These stations will provide updated information and tell you what to do. You should know the following terms used to describe flooding conditions:

- **FLOOD FORECASTS** mean rainfall may be heavy enough to cause rivers to overflow their banks or melting snow may be mixing with rainfall to produce similar effects.
- **FLOOD WARNING** or forecasts of impending floods describe the affected river, lake or tidewater, the severity of flooding (minor, moderate, or major) and when and where the flooding will begin.
- **FLASH FLOOD WATCHES** mean heavy rains (that may cause sudden flash flooding in specified areas) may occur. Understand that a flash flood can occur without visible sign of rainfall in your area. Be alert to a possible emergency which will require immediate action.
- **FLASH FLOOD WARNINGS** mean flash flooding is occurring or imminent along certain streams and designated areas. Move to high ground immediately.

POWER OUTAGE



Here are some suggestions to make your situation easier and safer to deal with while we're working to restore your service.

- **Check with your neighbors.** If you are the only one without power, or only a few appliances won't work, check to see if a fuse is blown or a circuit-breaker is tripped. If neighbors are without power too, please call 1-800-589-3101.
- **Call Centerior Consumer Services 1-800-589-3101.** Your phone call is the only way for Centerior to know that you're without power. If lines are busy, please wait a reasonable time and call again.
- **Listen to newscasts** on a battery-operated radio. During major power disruption, announcers often will broadcast reports on the extent of the trouble and the approximate time electric service will be restored.
- **Turn off major appliances** that should not be in operation when the power comes back on. **Do leave a light on** so you'll know when normal service has been restored. **Do not** use appliances if light is dim, indicating low voltage.

WHAT SHOULD YOU DO

- Listen to a radio or television station listed on page 2 of this calendar, or another local station in your area. These stations will provide updated information.
- Keep a stock of food that requires no cooking or refrigeration. Store drinking water in clean, closed containers.
- Keep a portable, battery-operated radio and flashlights in working order; stock extra batteries. Have first aid supplies and any medicines your family may need.
- Learn your community's flood evacuation routes and where to find high ground.
- If instructed, turn off utilities at the main switches or valves. Disconnect electrical appliances, but **do not touch** any electrical equipment if you are wet or standing in water.
- If your car stalls in a flooded area, abandon it! You and your car could be swept away.

- **Open refrigerators and freezers and little as possible.** Food will keep for hours if door-opening is kept to a minimum. If the outage is lengthy, contact a dry ice distributor.
- **In an emergency,** if you cannot reach Centerior, contact the local police or fire department to report downed power lines or other dangerous conditions. They may be able to contact The Illuminating Company or render assistance.
- **Stay away from, and never touch, downed lines under any circumstances.** Emergency situations and adverse weather conditions place severe demands on utility crews. Your patience and understanding is appreciated.
Employees are working hard to clear hazards and to restore your service as quickly as possible.

Special Needs Removal Card

Do you know of anyone that should be removed from the special needs list? If so, please complete both sides of this card and return it to your county Emergency Management Agency. (Addresses for county Emergency Management Agencies can be found on the back cover of this calendar.)

Please remove the following individual from the special needs listing.

Name _____

Address _____

Residence Location _____ (City, Village, Township)

_____ (State, Zip)

Phone No. _____

Fire District (if known) _____

Reason for removal

___ Condition improved

___ Person moved

___ Person expired

Person initiating request (if different from above).

Relationship to above _____

Name _____

Address _____

Residence Location _____ (City, Village, Township)

_____ (State, Zip)

Phone No. _____

FOLD AND TAPE BEFORE MAILING

Ashtabula County

Special Needs Information Card

If you or someone you know may require special help during an emergency evacuation, please complete this card and return it to your county Emergency Management Agency. This information will be kept in confidence.

Name _____

Address _____

Residence Location _____ (City, Village, Township)

_____ (State, Zip)

Phone No. _____

Fire District (if known) _____

Special needs. Please check appropriate box and specify assistance requested.

Hearing impaired _____

Visually impaired _____

Special transportation for disabled _____

No access to TV _____

No access to radio _____

Other _____

In the event a condition listed above changes, please advise your county Emergency Management Agency, or submit a special needs removal request.

Return this card to the Emergency Management Agency in your county. A new card should be submitted once each year, so that records can be continually updated.

FOLD AND TAPE BEFORE MAILING

PLACE
PROPER
POSTAGE
HERE

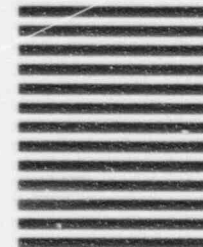


NO POSTAGE
NECESSARY
IF MAILED
IN THE
UNITED STATES

BUSINESS REPLY MAIL

FIRST CLASS PERMIT NO. 2392 CLEVELAND OH

POSTAGE WILL BE PAID BY ADDRESSEE

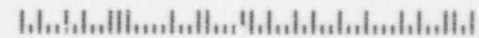


ASHTABULA COUNTY Emergency Mgmt Agency
25 WEST JEFFERSON STREET
JEFFERSON OH 44047-9982

_____ Emergency Management Agency

1996 Special Needs Removal Card

1996 Response Card



Geauga County

Special Needs Information Card

If you or someone you know may require special help during an emergency evacuation, please complete this card and return it to your county Emergency Management Agency. This information will be kept in confidence.

Name _____

Address _____

Residence Location _____ (City, Village, Township)

_____ (State, Zip)

Phone No. _____

Fire District (if known) _____

Hearing impaired _____

Visually impaired _____

Special transportation for disabled _____

No access to TV _____

No access to radio _____

Other _____

In the event a condition listed above changes, please advise your county Emergency Management Agency or submit a Special Needs Removal Request.

Return this card to the Emergency Management Agency in your county. A new card should be submitted once each year, so that records can be continually updated.

FOLD AND TAPE BEFORE MAILING

Lake County

Special Needs Information Card

If you or someone you know may require special help during an emergency evacuation, please complete this card and return it to your county Emergency Management Agency. This information will be kept in confidence.

Name _____

Address _____

Residence Location _____ (City, Village, Township)

_____ (State, Zip)

Phone No. _____

Fire District (if known) _____

Hearing impaired _____

Visually impaired _____

Special transportation for disabled _____

No access to TV _____

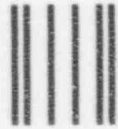
No access to radio _____

Other _____

In the event a condition listed above changes, please advise your county Emergency Management Agency or submit a Special Needs Removal Request.

Return this card to the Emergency Management Agency in your county. A new card should be submitted once each year, so that records can be continually updated.

FOLD AND TAPE BEFORE MAILING



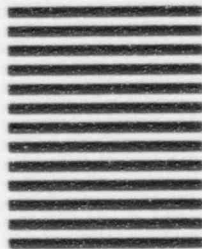
NO POSTAGE
NECESSARY
IF MAILED
IN THE
UNITED STATES

BUSINESS REPLY MAIL

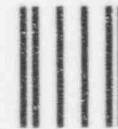
FIRST CLASS PERMIT NO. 2392 CLEVELAND OH

POSTAGE WILL BE PAID BY ADDRESSEE

GEAUGA COUNTY Emergency Mgmt Agency
12518 MERRITT ROAD
CHARDON OH 44024-9963



1996 Response Card



NO POSTAGE
NECESSARY
IF MAILED
IN THE
UNITED STATES

BUSINESS REPLY MAIL

FIRST CLASS PERMIT NO. 2392 CLEVELAND OH

POSTAGE WILL BE PAID BY ADDRESSEE

LAKE COUNTY Emergency Mgmt Agency
P O BOX 480
MENTOR OH 44061-9998



1996 Response Card



1996 Calendar

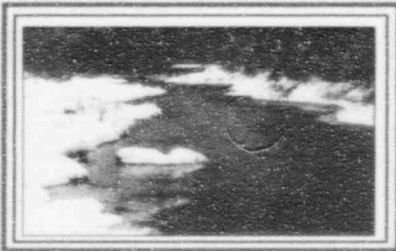
The natural beauty found throughout Lake, Geauga, and Ashtabula Counties is illustrated in this calendar. Unique features of each county are represented: the shores of Lake Erie, covered bridges, farms and wildlife.

A special thanks goes to the employees at the Perry Power Plant for expressing, through photographs, their idea of the beauty of their communities.

December 1995



January 1996



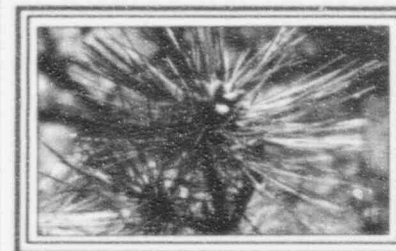
February 1996



March 1996



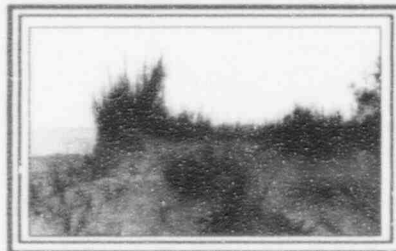
April 1996



May 1996



June 1996



July 1996



August 1996



September 1996



October 1996



November 1996



December 1996





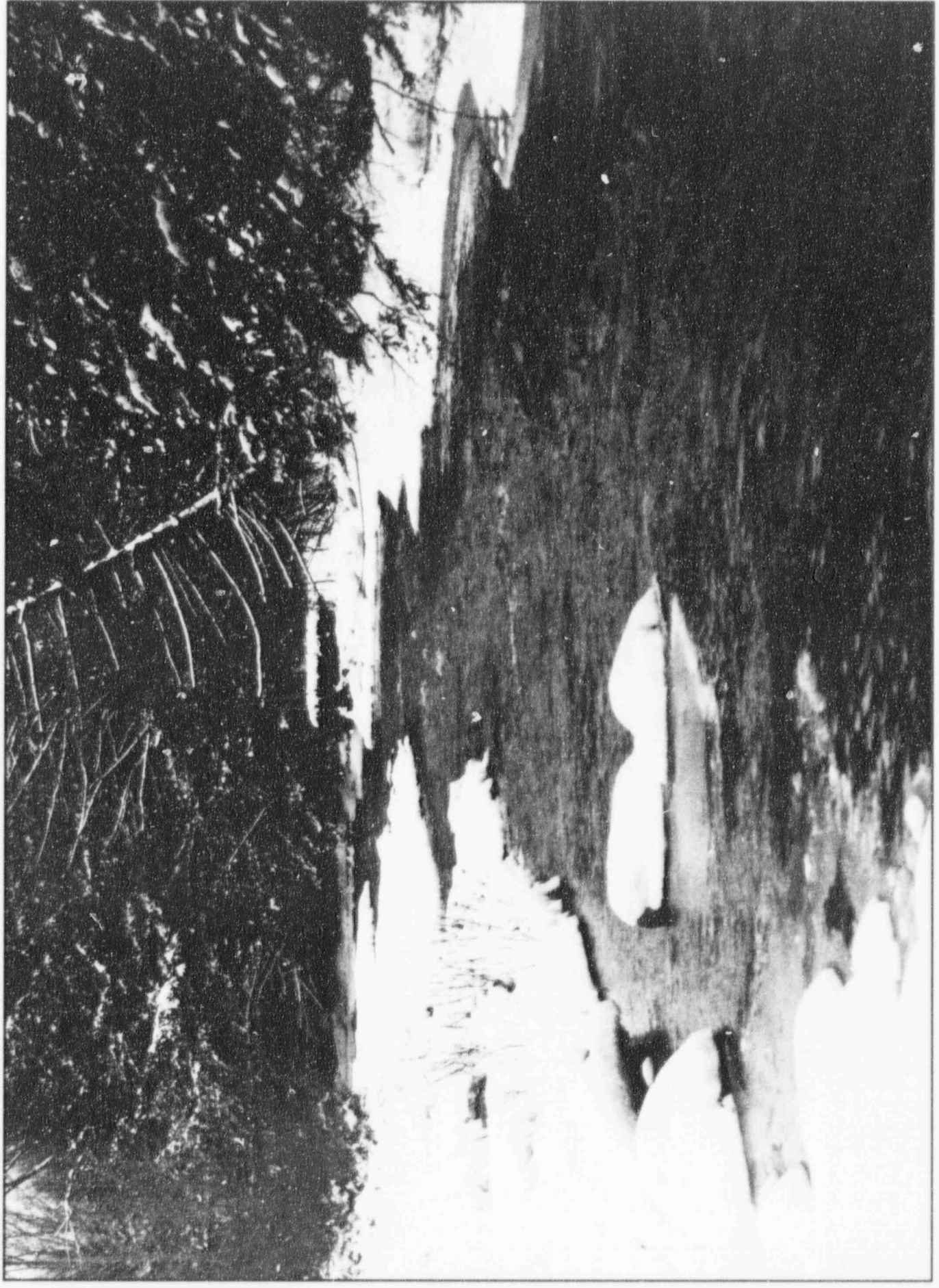
Photograph by Scott Roth

Snowscape

December 1995

Sunday	Monday	Tuesday	Wednesday	Thursday	Friday	Saturday																																																																																				
		<table border="1"> <caption>November 1995</caption> <thead> <tr> <th>S</th> <th>M</th> <th>TU</th> <th>W</th> <th>TH</th> <th>F</th> <th>S</th> </tr> </thead> <tbody> <tr> <td></td> <td></td> <td></td> <td>1</td> <td>2</td> <td>3</td> <td>4</td> </tr> <tr> <td>5</td> <td>6</td> <td>7</td> <td>8</td> <td>9</td> <td>10</td> <td>11</td> </tr> <tr> <td>12</td> <td>13</td> <td>14</td> <td>15</td> <td>16</td> <td>17</td> <td>18</td> </tr> <tr> <td>19</td> <td>20</td> <td>21</td> <td>22</td> <td>23</td> <td>24</td> <td>25</td> </tr> <tr> <td>26</td> <td>27</td> <td>28</td> <td>29</td> <td>30</td> <td></td> <td></td> </tr> </tbody> </table>	S	M	TU	W	TH	F	S				1	2	3	4	5	6	7	8	9	10	11	12	13	14	15	16	17	18	19	20	21	22	23	24	25	26	27	28	29	30			<table border="1"> <caption>January 1996</caption> <thead> <tr> <th>S</th> <th>M</th> <th>TU</th> <th>W</th> <th>TH</th> <th>F</th> <th>S</th> </tr> </thead> <tbody> <tr> <td></td> <td>1</td> <td>2</td> <td>3</td> <td>4</td> <td>5</td> <td>6</td> </tr> <tr> <td>7</td> <td>8</td> <td>9</td> <td>10</td> <td>11</td> <td>12</td> <td>13</td> </tr> <tr> <td>14</td> <td>15</td> <td>16</td> <td>17</td> <td>18</td> <td>19</td> <td>20</td> </tr> <tr> <td>21</td> <td>22</td> <td>23</td> <td>24</td> <td>25</td> <td>26</td> <td>27</td> </tr> <tr> <td>28</td> <td>29</td> <td>30</td> <td>31</td> <td></td> <td></td> <td></td> </tr> </tbody> </table>	S	M	TU	W	TH	F	S		1	2	3	4	5	6	7	8	9	10	11	12	13	14	15	16	17	18	19	20	21	22	23	24	25	26	27	28	29	30	31					1	2
S	M	TU	W	TH	F	S																																																																																				
			1	2	3	4																																																																																				
5	6	7	8	9	10	11																																																																																				
12	13	14	15	16	17	18																																																																																				
19	20	21	22	23	24	25																																																																																				
26	27	28	29	30																																																																																						
S	M	TU	W	TH	F	S																																																																																				
	1	2	3	4	5	6																																																																																				
7	8	9	10	11	12	13																																																																																				
14	15	16	17	18	19	20																																																																																				
21	22	23	24	25	26	27																																																																																				
28	29	30	31																																																																																							
3	4	5	6 ☉ Full Moon	7	8	9																																																																																				
10	11	12	13	14 ☾ Last Quarter	15	16																																																																																				
17	18 First Day of Hanukkah	19	20	21 ● New Moon First Day of Winter	22	23																																																																																				
24	25  Christmas Day Last Day of Hanukkah	26	27	28 ☽ First Quarter	29	30																																																																																				
31																																																																																										

Emergency information is included in the front of this calendar and in your local telephone book.



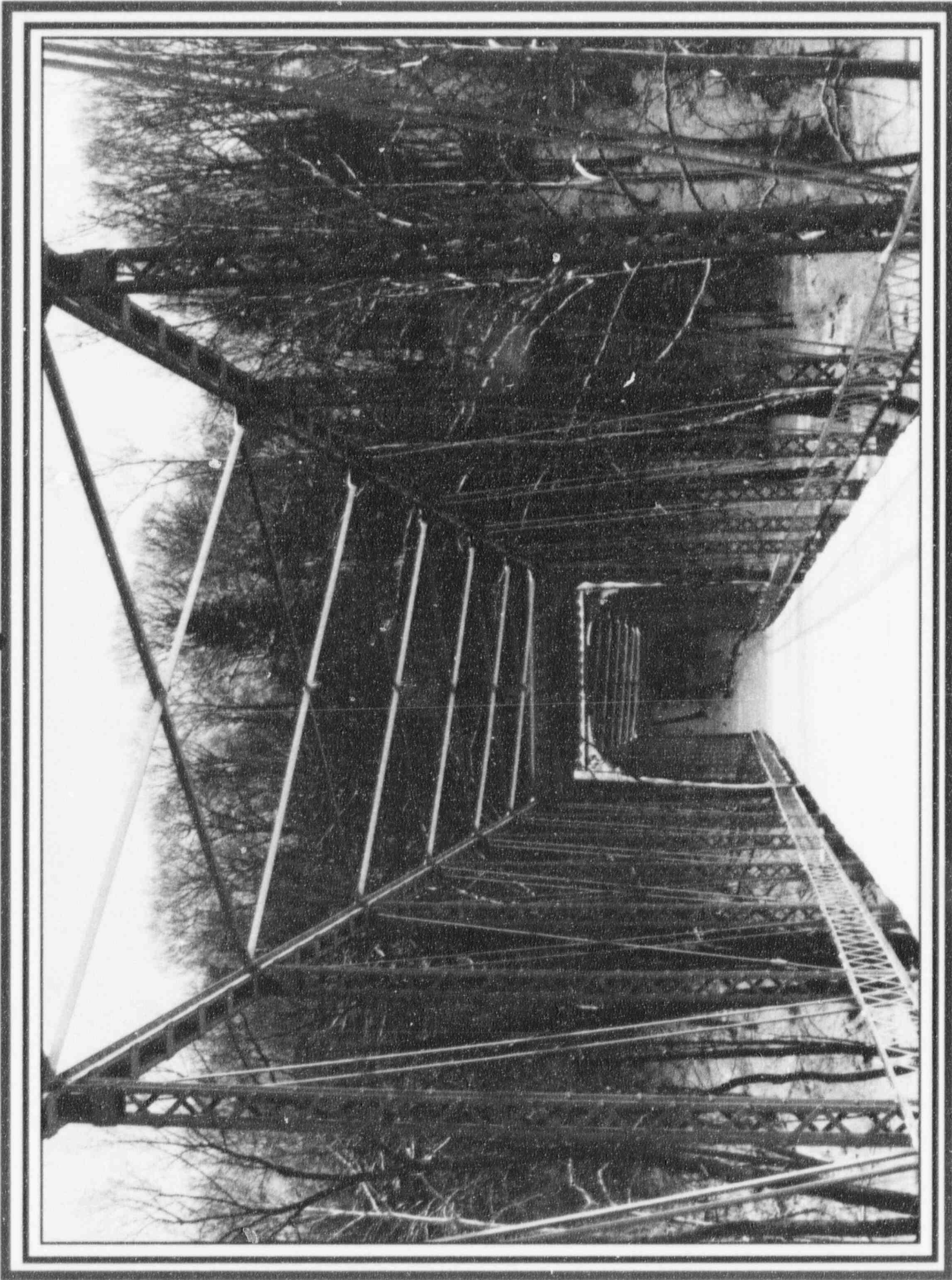
Photograph by Scott Roth

Quiet Ripples

January 1996

Sunday	Monday	Tuesday	Wednesday	Thursday	Friday	Saturday																																																																																											
	1  New Year's Day	2	3	4	5 ○ Full Moon	6																																																																																											
7	8	9	10  SIREN TESTING 11:00 A.M.	11	12	13 ◐ Last Quarter																																																																																											
14	15 Martin Luther King, Jr. Birthday Observed	16	17	18	19	20 ● New Moon																																																																																											
21	22	23	24	25	26	27 ◑ First Quarter																																																																																											
28	29	30	31	<table border="1"> <caption>December 1995</caption> <thead> <tr> <th>S</th> <th>M</th> <th>TU</th> <th>W</th> <th>TH</th> <th>F</th> <th>S</th> </tr> </thead> <tbody> <tr> <td></td> <td></td> <td></td> <td></td> <td></td> <td>1</td> <td>2</td> </tr> <tr> <td>3</td> <td>4</td> <td>5</td> <td>6</td> <td>7</td> <td>8</td> <td>9</td> </tr> <tr> <td>10</td> <td>11</td> <td>12</td> <td>13</td> <td>14</td> <td>15</td> <td>16</td> </tr> <tr> <td>17</td> <td>18</td> <td>19</td> <td>20</td> <td>21</td> <td>22</td> <td>23</td> </tr> <tr> <td>24</td> <td>25</td> <td>26</td> <td>27</td> <td>28</td> <td>29</td> <td>30</td> </tr> <tr> <td>31</td> <td></td> <td></td> <td></td> <td></td> <td></td> <td></td> </tr> </tbody> </table>	S	M	TU	W	TH	F	S						1	2	3	4	5	6	7	8	9	10	11	12	13	14	15	16	17	18	19	20	21	22	23	24	25	26	27	28	29	30	31							<table border="1"> <caption>February 1996</caption> <thead> <tr> <th>S</th> <th>M</th> <th>TU</th> <th>W</th> <th>TH</th> <th>F</th> <th>S</th> </tr> </thead> <tbody> <tr> <td></td> <td></td> <td></td> <td></td> <td>1</td> <td>2</td> <td>3</td> </tr> <tr> <td>4</td> <td>5</td> <td>6</td> <td>7</td> <td>8</td> <td>9</td> <td>10</td> </tr> <tr> <td>11</td> <td>12</td> <td>13</td> <td>14</td> <td>15</td> <td>16</td> <td>17</td> </tr> <tr> <td>18</td> <td>19</td> <td>20</td> <td>21</td> <td>22</td> <td>23</td> <td>24</td> </tr> <tr> <td>25</td> <td>26</td> <td>27</td> <td>28</td> <td>29</td> <td></td> <td></td> </tr> </tbody> </table>	S	M	TU	W	TH	F	S					1	2	3	4	5	6	7	8	9	10	11	12	13	14	15	16	17	18	19	20	21	22	23	24	25	26	27	28	29			
S	M	TU	W	TH	F	S																																																																																											
					1	2																																																																																											
3	4	5	6	7	8	9																																																																																											
10	11	12	13	14	15	16																																																																																											
17	18	19	20	21	22	23																																																																																											
24	25	26	27	28	29	30																																																																																											
31																																																																																																	
S	M	TU	W	TH	F	S																																																																																											
				1	2	3																																																																																											
4	5	6	7	8	9	10																																																																																											
11	12	13	14	15	16	17																																																																																											
18	19	20	21	22	23	24																																																																																											
25	26	27	28	29																																																																																													

Emergency information is included in the front of this calendar and in your local telephone book.



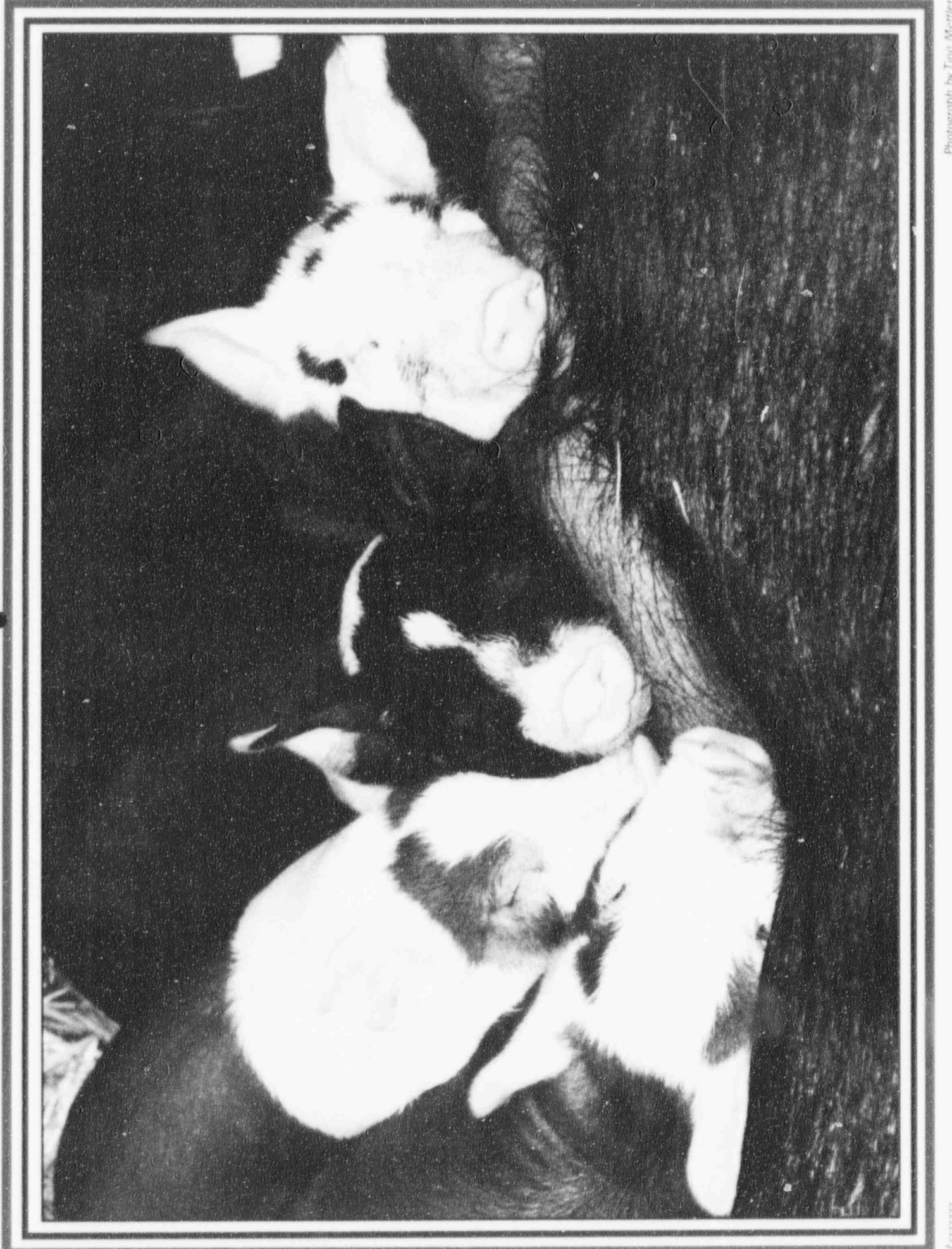
The Path Seldom Traveled

Photograph by Scott Roth

February 1996

Sunday	Monday	Tuesday	Wednesday	Thursday	Friday	Saturday																																																																																																									
	<table border="1"> <thead> <tr> <th colspan="7">January 1996</th> </tr> <tr> <th>S</th> <th>M</th> <th>TU</th> <th>W</th> <th>TH</th> <th>F</th> <th>S</th> </tr> </thead> <tbody> <tr><td>1</td><td>2</td><td>3</td><td>4</td><td>5</td><td>6</td><td></td></tr> <tr><td>7</td><td>8</td><td>9</td><td>10</td><td>11</td><td>12</td><td>13</td></tr> <tr><td>14</td><td>15</td><td>16</td><td>17</td><td>18</td><td>19</td><td>20</td></tr> <tr><td>21</td><td>22</td><td>23</td><td>24</td><td>25</td><td>26</td><td>27</td></tr> <tr><td>28</td><td>29</td><td>30</td><td>31</td><td></td><td></td><td></td></tr> </tbody> </table>	January 1996							S	M	TU	W	TH	F	S	1	2	3	4	5	6		7	8	9	10	11	12	13	14	15	16	17	18	19	20	21	22	23	24	25	26	27	28	29	30	31				<table border="1"> <thead> <tr> <th colspan="7">March 1996</th> </tr> <tr> <th>S</th> <th>M</th> <th>TU</th> <th>W</th> <th>TH</th> <th>F</th> <th>S</th> </tr> </thead> <tbody> <tr><td></td><td></td><td></td><td></td><td></td><td>1</td><td>2</td></tr> <tr><td>3</td><td>4</td><td>5</td><td>6</td><td>7</td><td>8</td><td>9</td></tr> <tr><td>10</td><td>11</td><td>12</td><td>13</td><td>14</td><td>15</td><td>16</td></tr> <tr><td>17</td><td>18</td><td>19</td><td>20</td><td>21</td><td>22</td><td>23</td></tr> <tr><td>24</td><td>25</td><td>26</td><td>27</td><td>28</td><td>29</td><td>30</td></tr> <tr><td>31</td><td></td><td></td><td></td><td></td><td></td><td></td></tr> </tbody> </table>	March 1996							S	M	TU	W	TH	F	S						1	2	3	4	5	6	7	8	9	10	11	12	13	14	15	16	17	18	19	20	21	22	23	24	25	26	27	28	29	30	31								1	2 	3
January 1996																																																																																																															
S	M	TU	W	TH	F	S																																																																																																									
1	2	3	4	5	6																																																																																																										
7	8	9	10	11	12	13																																																																																																									
14	15	16	17	18	19	20																																																																																																									
21	22	23	24	25	26	27																																																																																																									
28	29	30	31																																																																																																												
March 1996																																																																																																															
S	M	TU	W	TH	F	S																																																																																																									
					1	2																																																																																																									
3	4	5	6	7	8	9																																																																																																									
10	11	12	13	14	15	16																																																																																																									
17	18	19	20	21	22	23																																																																																																									
24	25	26	27	28	29	30																																																																																																									
31																																																																																																															
4 ☉ Full Moon	5	6	7	8	9 Ground Hog Day	10																																																																																																									
11	12 ☾ Last Quarter Lincoln's Birthday	13	14  Valentine's Day	15	16	17																																																																																																									
18 ☀ New Moon	19 President's Day Observed	20	21 Ash Wednesday	22 Washington's Birthday	23	24																																																																																																									
25	26 ☽ First Quarter	27	28	28+1  Leap Year																																																																																																											

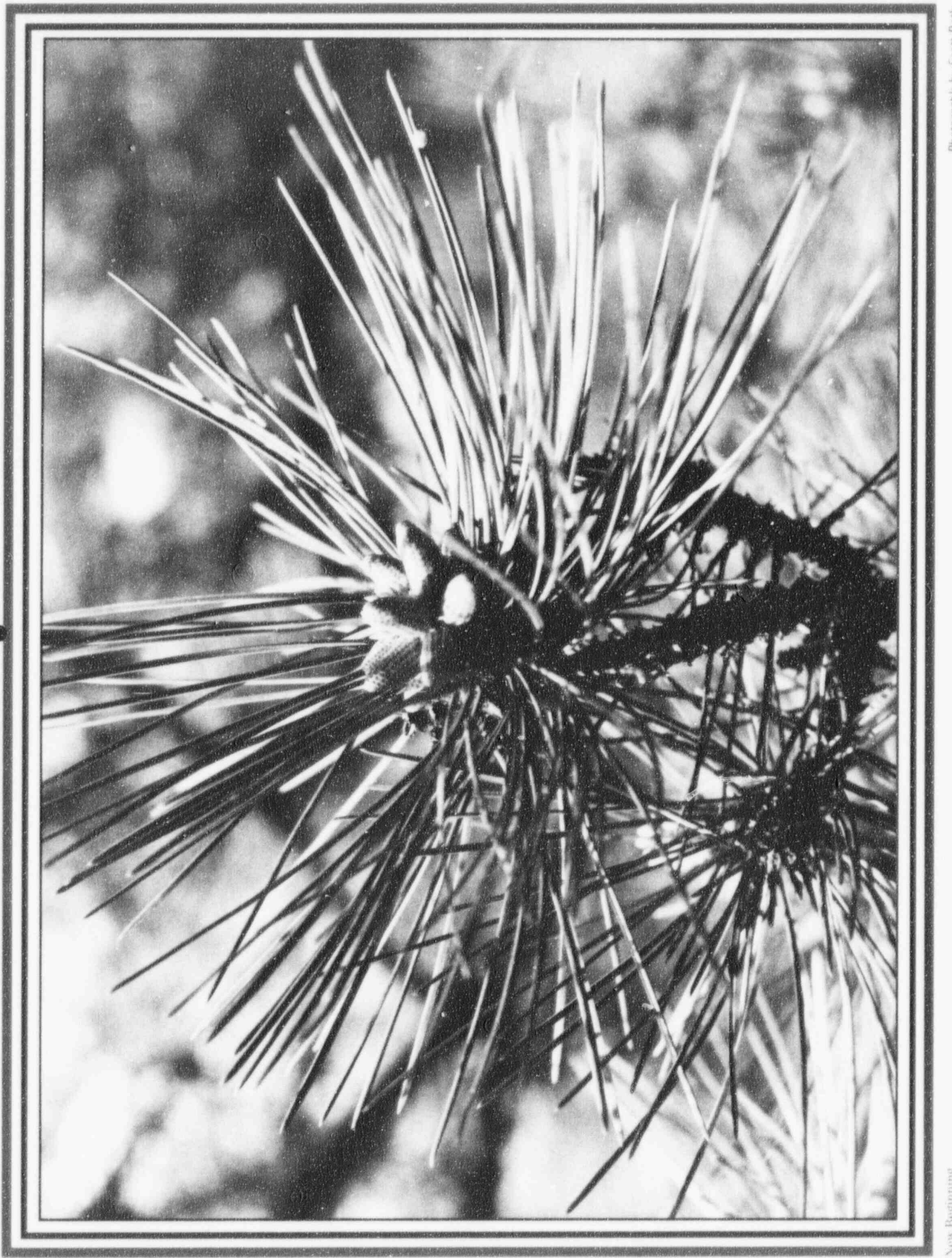
Emergency information is included in the front of this calendar and in your local telephone book.



Photograph by Tina Mettler

March 1996

Sunday	Monday	Tuesday	Wednesday	Thursday	Friday	Saturday																																																																																				
	<table border="1"> <caption>February 1996</caption> <tr><td>S</td><td>M</td><td>TU</td><td>W</td><td>TH</td><td>F</td><td>S</td></tr> <tr><td></td><td></td><td></td><td></td><td>1</td><td>2</td><td>3</td></tr> <tr><td>4</td><td>5</td><td>6</td><td>7</td><td>8</td><td>9</td><td>10</td></tr> <tr><td>11</td><td>12</td><td>13</td><td>14</td><td>15</td><td>16</td><td>17</td></tr> <tr><td>18</td><td>19</td><td>20</td><td>21</td><td>22</td><td>23</td><td>24</td></tr> <tr><td>25</td><td>26</td><td>27</td><td>28</td><td>29</td><td></td><td></td></tr> </table>	S	M	TU	W	TH	F	S					1	2	3	4	5	6	7	8	9	10	11	12	13	14	15	16	17	18	19	20	21	22	23	24	25	26	27	28	29			<table border="1"> <caption>April 1996</caption> <tr><td>S</td><td>M</td><td>TU</td><td>W</td><td>TH</td><td>F</td><td>S</td></tr> <tr><td></td><td>1</td><td>2</td><td>3</td><td>4</td><td>5</td><td>6</td></tr> <tr><td>7</td><td>8</td><td>9</td><td>10</td><td>11</td><td>12</td><td>13</td></tr> <tr><td>14</td><td>15</td><td>16</td><td>17</td><td>18</td><td>19</td><td>20</td></tr> <tr><td>21</td><td>22</td><td>23</td><td>24</td><td>25</td><td>26</td><td>27</td></tr> <tr><td>28</td><td>29</td><td>30</td><td></td><td></td><td></td><td></td></tr> </table>	S	M	TU	W	TH	F	S		1	2	3	4	5	6	7	8	9	10	11	12	13	14	15	16	17	18	19	20	21	22	23	24	25	26	27	28	29	30							1	2
S	M	TU	W	TH	F	S																																																																																				
				1	2	3																																																																																				
4	5	6	7	8	9	10																																																																																				
11	12	13	14	15	16	17																																																																																				
18	19	20	21	22	23	24																																																																																				
25	26	27	28	29																																																																																						
S	M	TU	W	TH	F	S																																																																																				
	1	2	3	4	5	6																																																																																				
7	8	9	10	11	12	13																																																																																				
14	15	16	17	18	19	20																																																																																				
21	22	23	24	25	26	27																																																																																				
28	29	30																																																																																								
3	4	5 ☉ Full Moon	6	7	8	9																																																																																				
10	11	12 ☾ Last Quarter	13	14	15	16																																																																																				
17 🍀 St. Patrick's Day	18	19 ☀ New Moon	20 First Day of Spring	21	22	23																																																																																				
24	25	26 ☾ First Quarter	27	28	29	30																																																																																				
31 Palm Sunday																																																																																										



Photograph by Scott Roth

New Beginning

April 1996

Sunday	Monday	Tuesday	Wednesday	Thursday	Friday	Saturday																																																																																											
	1 April Fools' Day	2	3 ● Full Moon	4 Passover	5 Good Friday	6																																																																																											
7  Easter Daylight-Saving Time Begins	8	9	10 ☾ Last Quarter  SIREN TESTING 11:00 A.M.	11	12	13																																																																																											
14	15	16	17 ● New Moon	18	19	20																																																																																											
21	22	23	24 Secretaries' Day	25 ☽ First Quarter	26	27																																																																																											
28	29	30		<table border="1"> <caption>March 1996</caption> <thead> <tr> <th>S</th> <th>M</th> <th>TU</th> <th>W</th> <th>TH</th> <th>F</th> <th>S</th> </tr> </thead> <tbody> <tr> <td></td> <td></td> <td></td> <td></td> <td></td> <td>1</td> <td>2</td> </tr> <tr> <td>3</td> <td>4</td> <td>5</td> <td>6</td> <td>7</td> <td>8</td> <td>9</td> </tr> <tr> <td>10</td> <td>11</td> <td>12</td> <td>13</td> <td>14</td> <td>15</td> <td>16</td> </tr> <tr> <td>17</td> <td>18</td> <td>19</td> <td>20</td> <td>21</td> <td>22</td> <td>23</td> </tr> <tr> <td>24</td> <td>25</td> <td>26</td> <td>27</td> <td>28</td> <td>29</td> <td>30</td> </tr> <tr> <td>31</td> <td></td> <td></td> <td></td> <td></td> <td></td> <td></td> </tr> </tbody> </table>	S	M	TU	W	TH	F	S						1	2	3	4	5	6	7	8	9	10	11	12	13	14	15	16	17	18	19	20	21	22	23	24	25	26	27	28	29	30	31							<table border="1"> <caption>May 1996</caption> <thead> <tr> <th>S</th> <th>M</th> <th>TU</th> <th>W</th> <th>TH</th> <th>F</th> <th>S</th> </tr> </thead> <tbody> <tr> <td></td> <td></td> <td></td> <td>1</td> <td>2</td> <td>3</td> <td>4</td> </tr> <tr> <td>5</td> <td>6</td> <td>7</td> <td>8</td> <td>9</td> <td>10</td> <td>11</td> </tr> <tr> <td>12</td> <td>13</td> <td>14</td> <td>15</td> <td>16</td> <td>17</td> <td>18</td> </tr> <tr> <td>19</td> <td>20</td> <td>21</td> <td>22</td> <td>23</td> <td>24</td> <td>25</td> </tr> <tr> <td>26</td> <td>27</td> <td>28</td> <td>29</td> <td>30</td> <td>31</td> <td></td> </tr> </tbody> </table>	S	M	TU	W	TH	F	S				1	2	3	4	5	6	7	8	9	10	11	12	13	14	15	16	17	18	19	20	21	22	23	24	25	26	27	28	29	30	31		
S	M	TU	W	TH	F	S																																																																																											
					1	2																																																																																											
3	4	5	6	7	8	9																																																																																											
10	11	12	13	14	15	16																																																																																											
17	18	19	20	21	22	23																																																																																											
24	25	26	27	28	29	30																																																																																											
31																																																																																																	
S	M	TU	W	TH	F	S																																																																																											
			1	2	3	4																																																																																											
5	6	7	8	9	10	11																																																																																											
12	13	14	15	16	17	18																																																																																											
19	20	21	22	23	24	25																																																																																											
26	27	28	29	30	31																																																																																												

Emergency information is included in the front of this calendar and in your local telephone book.

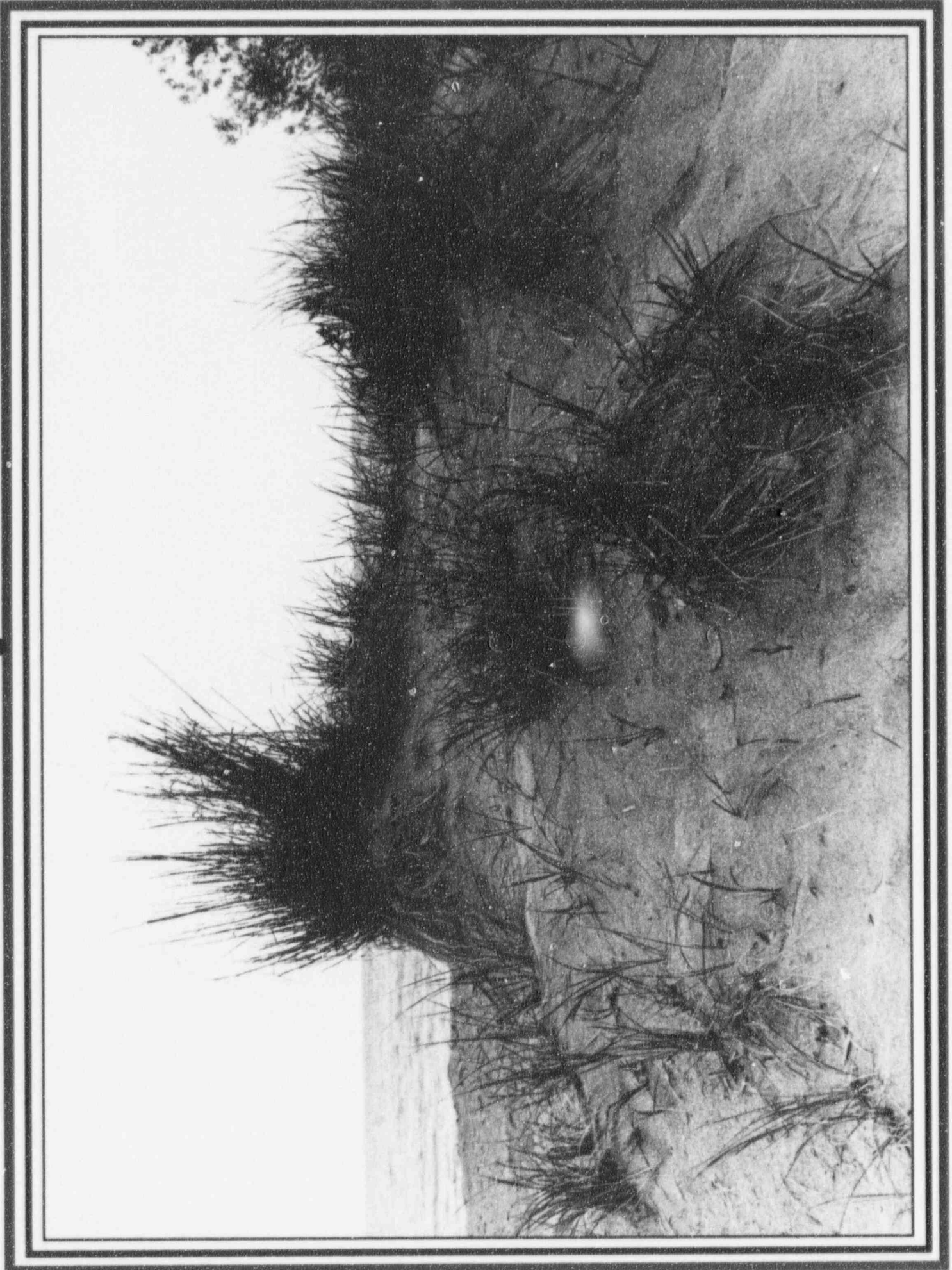


Photograph by Scott Roth

May 1996

Sunday	Monday	Tuesday	Wednesday	Thursday	Friday	Saturday																																																																																											
<table border="1"> <caption>April 1996</caption> <tr><th>S</th><th>M</th><th>TU</th><th>W</th><th>TH</th><th>F</th><th>S</th></tr> <tr><td></td><td>1</td><td>2</td><td>3</td><td>4</td><td>5</td><td>6</td></tr> <tr><td>7</td><td>8</td><td>9</td><td>10</td><td>11</td><td>12</td><td>13</td></tr> <tr><td>14</td><td>15</td><td>16</td><td>17</td><td>18</td><td>19</td><td>20</td></tr> <tr><td>21</td><td>22</td><td>23</td><td>24</td><td>25</td><td>26</td><td>27</td></tr> <tr><td>28</td><td>29</td><td>30</td><td></td><td></td><td></td><td></td></tr> </table>	S	M	TU	W	TH	F	S		1	2	3	4	5	6	7	8	9	10	11	12	13	14	15	16	17	18	19	20	21	22	23	24	25	26	27	28	29	30					<table border="1"> <caption>June 1996</caption> <tr><th>S</th><th>M</th><th>TU</th><th>W</th><th>TH</th><th>F</th><th>S</th></tr> <tr><td></td><td></td><td></td><td></td><td></td><td></td><td>1</td></tr> <tr><td>2</td><td>3</td><td>4</td><td>5</td><td>6</td><td>7</td><td>8</td></tr> <tr><td>9</td><td>10</td><td>11</td><td>12</td><td>13</td><td>14</td><td>15</td></tr> <tr><td>16</td><td>17</td><td>18</td><td>19</td><td>20</td><td>21</td><td>22</td></tr> <tr><td>23</td><td>24</td><td>25</td><td>26</td><td>27</td><td>28</td><td>29</td></tr> <tr><td>30</td><td></td><td></td><td></td><td></td><td></td><td></td></tr> </table>	S	M	TU	W	TH	F	S							1	2	3	4	5	6	7	8	9	10	11	12	13	14	15	16	17	18	19	20	21	22	23	24	25	26	27	28	29	30								1	2	3 ☉ Full Moon	4
S	M	TU	W	TH	F	S																																																																																											
	1	2	3	4	5	6																																																																																											
7	8	9	10	11	12	13																																																																																											
14	15	16	17	18	19	20																																																																																											
21	22	23	24	25	26	27																																																																																											
28	29	30																																																																																															
S	M	TU	W	TH	F	S																																																																																											
						1																																																																																											
2	3	4	5	6	7	8																																																																																											
9	10	11	12	13	14	15																																																																																											
16	17	18	19	20	21	22																																																																																											
23	24	25	26	27	28	29																																																																																											
30																																																																																																	
5	6	7	8	9	10 ☾ Last Quarter	11																																																																																											
12  Mother's Day	13	14	15	16	17 ☀ New Moon	18 Armed Forces Day																																																																																											
19	20	21	22	23	24	25 ☽ First Quarter																																																																																											
26	27 Memorial Day Observed	28	29	30	31																																																																																												

Emergency information is included in the front of this calendar and in your local telephone book.



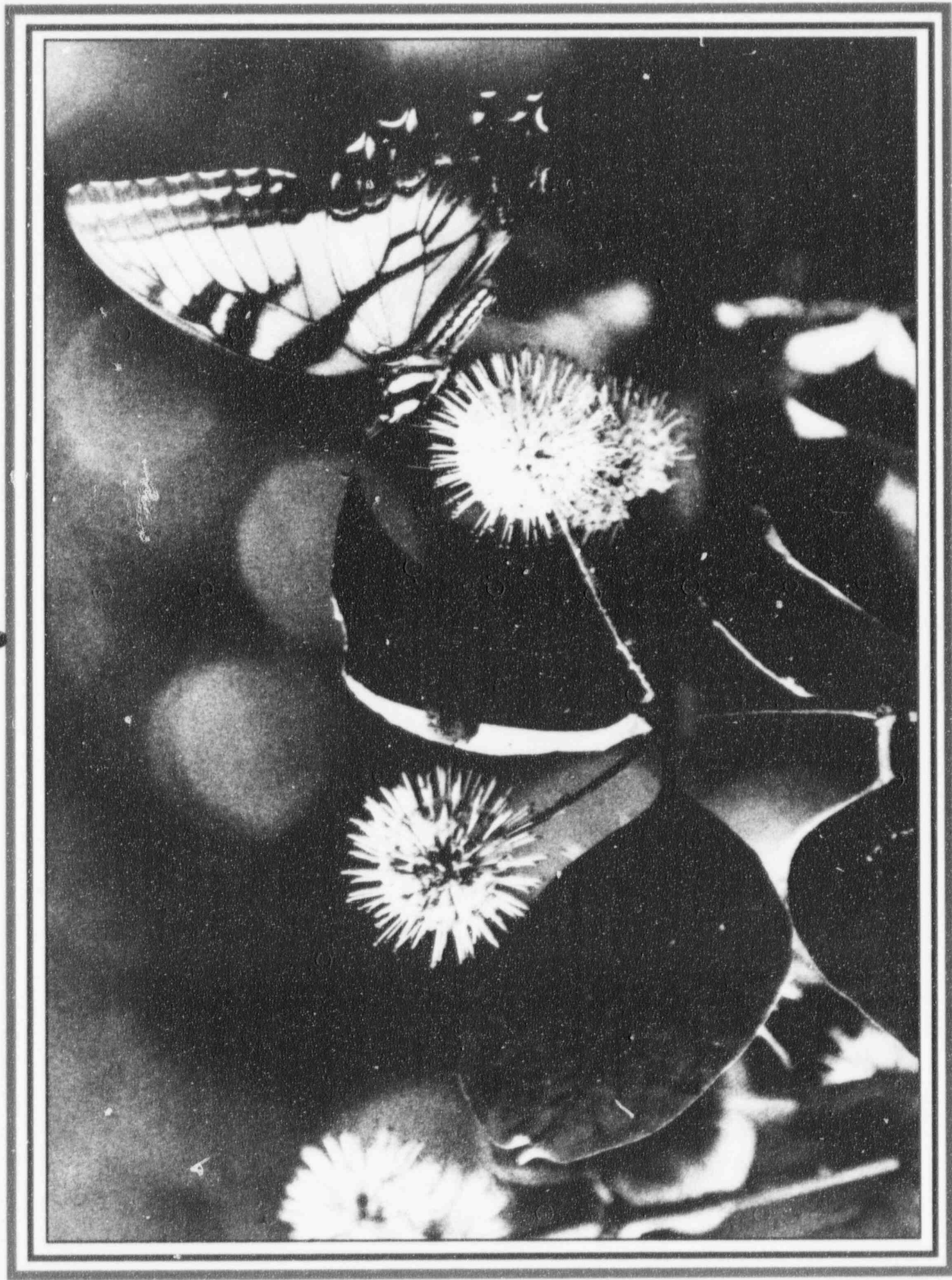
Photograph by Todd Mackey

Ernie View

June 1996

Sunday	Monday	Tuesday	Wednesday	Thursday	Friday	Saturday																																																																																				
		<table border="1"> <caption>May 1996</caption> <thead> <tr> <th>S</th> <th>M</th> <th>TU</th> <th>W</th> <th>TH</th> <th>F</th> <th>S</th> </tr> </thead> <tbody> <tr><td></td><td></td><td>1</td><td>2</td><td>3</td><td>4</td><td></td></tr> <tr><td>5</td><td>6</td><td>7</td><td>8</td><td>9</td><td>10</td><td>11</td></tr> <tr><td>12</td><td>13</td><td>14</td><td>15</td><td>16</td><td>17</td><td>18</td></tr> <tr><td>19</td><td>20</td><td>21</td><td>22</td><td>23</td><td>24</td><td>25</td></tr> <tr><td>26</td><td>27</td><td>28</td><td>29</td><td>30</td><td>31</td><td></td></tr> </tbody> </table>	S	M	TU	W	TH	F	S			1	2	3	4		5	6	7	8	9	10	11	12	13	14	15	16	17	18	19	20	21	22	23	24	25	26	27	28	29	30	31		<table border="1"> <caption>July 1996</caption> <thead> <tr> <th>S</th> <th>M</th> <th>TU</th> <th>W</th> <th>TH</th> <th>F</th> <th>S</th> </tr> </thead> <tbody> <tr><td>1</td><td>2</td><td>3</td><td>4</td><td>5</td><td>6</td><td></td></tr> <tr><td>7</td><td>8</td><td>9</td><td>10</td><td>11</td><td>12</td><td>13</td></tr> <tr><td>14</td><td>15</td><td>16</td><td>17</td><td>18</td><td>19</td><td>20</td></tr> <tr><td>21</td><td>22</td><td>23</td><td>24</td><td>25</td><td>26</td><td>27</td></tr> <tr><td>28</td><td>29</td><td>30</td><td>31</td><td></td><td></td><td></td></tr> </tbody> </table>	S	M	TU	W	TH	F	S	1	2	3	4	5	6		7	8	9	10	11	12	13	14	15	16	17	18	19	20	21	22	23	24	25	26	27	28	29	30	31						1 ☉ Full Moon
S	M	TU	W	TH	F	S																																																																																				
		1	2	3	4																																																																																					
5	6	7	8	9	10	11																																																																																				
12	13	14	15	16	17	18																																																																																				
19	20	21	22	23	24	25																																																																																				
26	27	28	29	30	31																																																																																					
S	M	TU	W	TH	F	S																																																																																				
1	2	3	4	5	6																																																																																					
7	8	9	10	11	12	13																																																																																				
14	15	16	17	18	19	20																																																																																				
21	22	23	24	25	26	27																																																																																				
28	29	30	31																																																																																							
2	3	4	5	6	7	8 ☾ Last Quarter																																																																																				
9	10	11	12	13	14	15 ☀ New Moon																																																																																				
16 	17	18	19	20	21	22																																																																																				
Father's Day				First Day of Summer	Flag Day																																																																																					
23	24 ☾ First Quarter	25	26	27	28	29																																																																																				
30																																																																																										

Emergency information is included in the front of this calendar and in your local telephone book.



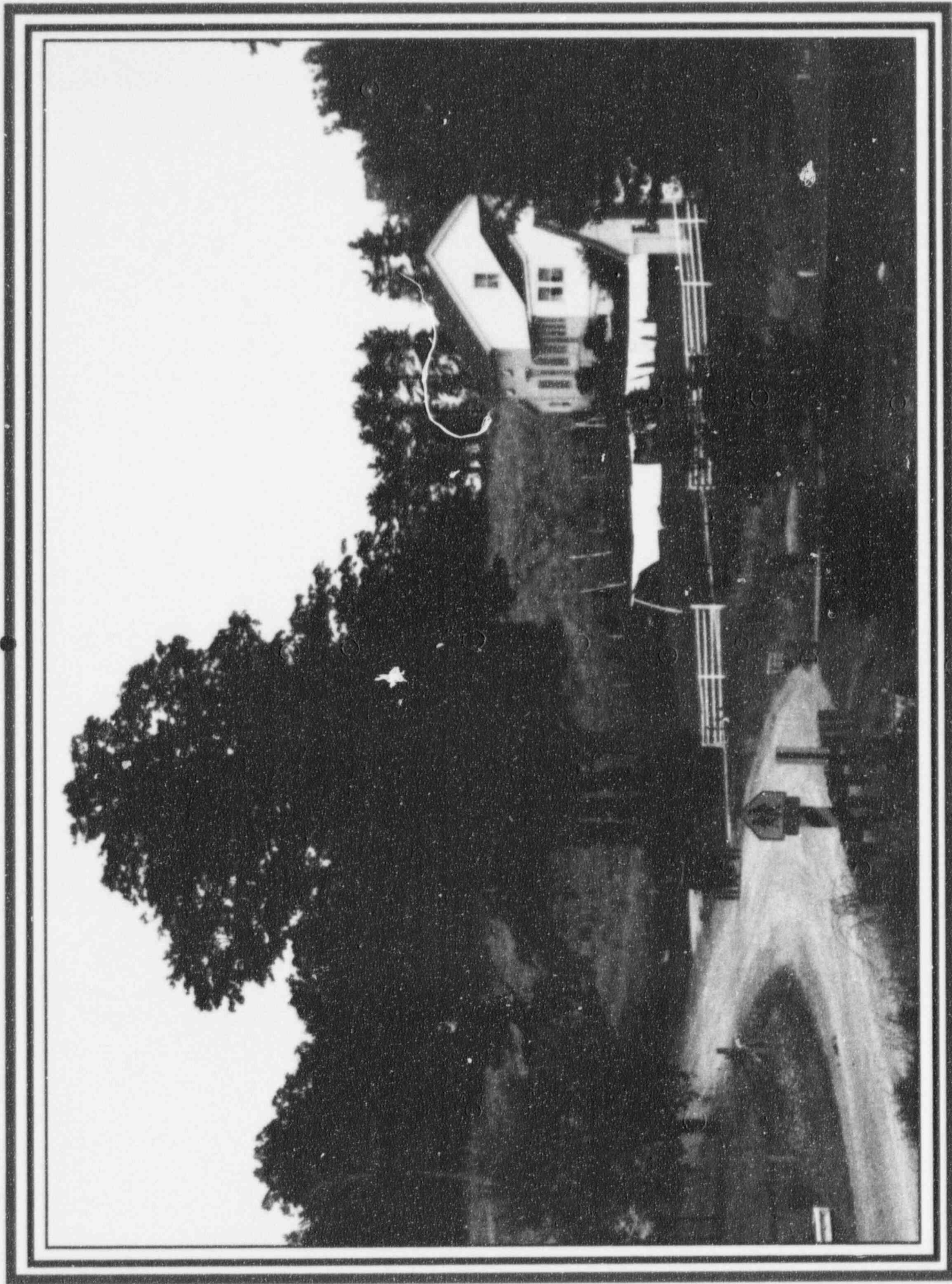
Photograph by Irma Mettler

Splendor of Summer

July 1996

Sunday	Monday	Tuesday	Wednesday	Thursday	Friday	Saturday																																																																																										
	1	2	3	4 Independence Day	5	6																																																																																										
7 ☾ Last Quarter	8	9	10 SIREN TESTING 11:00 A.M. 	11	12	13																																																																																										
14	15 ● New Moon	16	17	18	19	20																																																																																										
21	22	23 ☽ First Quarter	24	25	26	27																																																																																										
28	29	30 ○ Full Moon	31	<table border="1"> <caption>June 1996</caption> <thead> <tr><th>S</th><th>M</th><th>TU</th><th>W</th><th>TH</th><th>F</th><th>S</th></tr> </thead> <tbody> <tr><td></td><td></td><td></td><td></td><td></td><td></td><td>1</td></tr> <tr><td>2</td><td>3</td><td>4</td><td>5</td><td>6</td><td>7</td><td>8</td></tr> <tr><td>9</td><td>10</td><td>11</td><td>12</td><td>13</td><td>14</td><td>15</td></tr> <tr><td>16</td><td>17</td><td>18</td><td>19</td><td>20</td><td>21</td><td>22</td></tr> <tr><td>23</td><td>24</td><td>25</td><td>26</td><td>27</td><td>28</td><td>29</td></tr> <tr><td>30</td><td></td><td></td><td></td><td></td><td></td><td></td></tr> </tbody> </table>	S	M	TU	W	TH	F	S							1	2	3	4	5	6	7	8	9	10	11	12	13	14	15	16	17	18	19	20	21	22	23	24	25	26	27	28	29	30							<table border="1"> <caption>August 1996</caption> <thead> <tr><th>S</th><th>M</th><th>TU</th><th>W</th><th>TH</th><th>F</th><th>S</th></tr> </thead> <tbody> <tr><td></td><td></td><td></td><td></td><td>1</td><td>2</td><td>3</td></tr> <tr><td>4</td><td>5</td><td>6</td><td>7</td><td>8</td><td>9</td><td>10</td></tr> <tr><td>11</td><td>12</td><td>13</td><td>14</td><td>15</td><td>16</td><td>17</td></tr> <tr><td>18</td><td>19</td><td>20</td><td>21</td><td>22</td><td>23</td><td>24</td></tr> <tr><td>25</td><td>26</td><td>27</td><td>28</td><td>29</td><td>30</td><td>31</td></tr> </tbody> </table>	S	M	TU	W	TH	F	S					1	2	3	4	5	6	7	8	9	10	11	12	13	14	15	16	17	18	19	20	21	22	23	24	25	26	27	28	29	30	31
S	M	TU	W	TH	F	S																																																																																										
						1																																																																																										
2	3	4	5	6	7	8																																																																																										
9	10	11	12	13	14	15																																																																																										
16	17	18	19	20	21	22																																																																																										
23	24	25	26	27	28	29																																																																																										
30																																																																																																
S	M	TU	W	TH	F	S																																																																																										
				1	2	3																																																																																										
4	5	6	7	8	9	10																																																																																										
11	12	13	14	15	16	17																																																																																										
18	19	20	21	22	23	24																																																																																										
25	26	27	28	29	30	31																																																																																										

Emergency information is included in the front of this calendar and in your local telephone book.



Photograph by Tina Mettler

Coming Home

August 1996

Sunday	Monday	Tuesday	Wednesday	Thursday	Friday	Saturday																																																																																				
<table border="1"> <caption>July 1996</caption> <tr><th>S</th><th>M</th><th>TU</th><th>W</th><th>TH</th><th>F</th><th>S</th></tr> <tr><td>1</td><td>2</td><td>3</td><td>4</td><td>5</td><td>6</td><td></td></tr> <tr><td>7</td><td>8</td><td>9</td><td>10</td><td>11</td><td>12</td><td>13</td></tr> <tr><td>14</td><td>15</td><td>16</td><td>17</td><td>18</td><td>19</td><td>20</td></tr> <tr><td>21</td><td>22</td><td>23</td><td>24</td><td>25</td><td>26</td><td>27</td></tr> <tr><td>28</td><td>29</td><td>30</td><td>31</td><td></td><td></td><td></td></tr> </table>	S	M	TU	W	TH	F	S	1	2	3	4	5	6		7	8	9	10	11	12	13	14	15	16	17	18	19	20	21	22	23	24	25	26	27	28	29	30	31				<table border="1"> <caption>September 1996</caption> <tr><th>S</th><th>M</th><th>TU</th><th>W</th><th>TH</th><th>F</th><th>S</th></tr> <tr><td>1</td><td>2</td><td>3</td><td>4</td><td>5</td><td>6</td><td>7</td></tr> <tr><td>8</td><td>9</td><td>10</td><td>11</td><td>12</td><td>13</td><td>14</td></tr> <tr><td>15</td><td>16</td><td>17</td><td>18</td><td>19</td><td>20</td><td>21</td></tr> <tr><td>22</td><td>23</td><td>24</td><td>25</td><td>26</td><td>27</td><td>28</td></tr> <tr><td>29</td><td>30</td><td></td><td></td><td></td><td></td><td></td></tr> </table>	S	M	TU	W	TH	F	S	1	2	3	4	5	6	7	8	9	10	11	12	13	14	15	16	17	18	19	20	21	22	23	24	25	26	27	28	29	30								1	2	3
S	M	TU	W	TH	F	S																																																																																				
1	2	3	4	5	6																																																																																					
7	8	9	10	11	12	13																																																																																				
14	15	16	17	18	19	20																																																																																				
21	22	23	24	25	26	27																																																																																				
28	29	30	31																																																																																							
S	M	TU	W	TH	F	S																																																																																				
1	2	3	4	5	6	7																																																																																				
8	9	10	11	12	13	14																																																																																				
15	16	17	18	19	20	21																																																																																				
22	23	24	25	26	27	28																																																																																				
29	30																																																																																									
4	5	6 ☾ Last Quarter	7	8	9	10																																																																																				
11	12	13	14 ● New Moon	15	16	17																																																																																				
18	19	20	21 ☽ First Quarter	22	23	24																																																																																				
25	26	27	28 ○ Full Moon	29	30	31																																																																																				

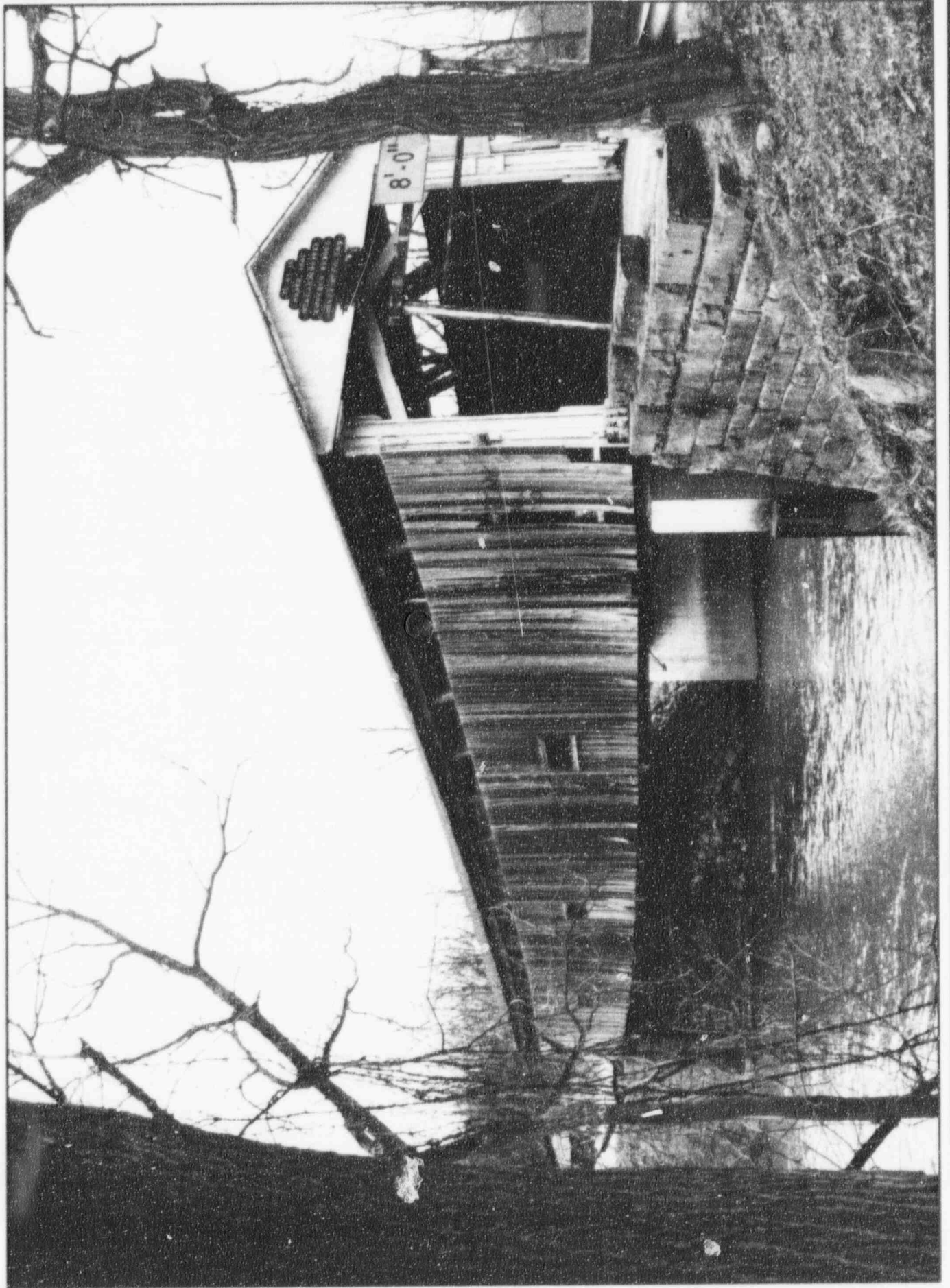
Emergency information is included in the front of this calendar and in your local telephone book.



September 1996

Sunday	Monday	Tuesday	Wednesday	Thursday	Friday	Saturday																																																																																			
1	2 Labor Day	3	4 ☾ Last Quarter	5	6	7																																																																																			
8 Grandparent's Day	9	10	11	12 ● New Moon	13	14 Rosh Hashanah																																																																																			
15	16	17	18	19	20 ☽ First Quarter	21																																																																																			
22 First Day of Autumn	23 Yom Kippur	24	25	26 ☽ Full Moon	27	28																																																																																			
29	30		<table border="1"> <caption>August 1996</caption> <thead> <tr> <th>S</th> <th>M</th> <th>TU</th> <th>W</th> <th>TH</th> <th>F</th> <th>S</th> </tr> </thead> <tbody> <tr> <td></td> <td></td> <td></td> <td></td> <td>1</td> <td>2</td> <td>3</td> </tr> <tr> <td>4</td> <td>5</td> <td>6</td> <td>7</td> <td>8</td> <td>9</td> <td>10</td> </tr> <tr> <td>11</td> <td>12</td> <td>13</td> <td>14</td> <td>15</td> <td>16</td> <td>17</td> </tr> <tr> <td>18</td> <td>19</td> <td>20</td> <td>21</td> <td>22</td> <td>23</td> <td>24</td> </tr> <tr> <td>25</td> <td>26</td> <td>27</td> <td>28</td> <td>29</td> <td>30</td> <td>31</td> </tr> </tbody> </table>	S	M	TU	W	TH	F	S					1	2	3	4	5	6	7	8	9	10	11	12	13	14	15	16	17	18	19	20	21	22	23	24	25	26	27	28	29	30	31	<table border="1"> <caption>October 1996</caption> <thead> <tr> <th>S</th> <th>M</th> <th>TU</th> <th>W</th> <th>TH</th> <th>F</th> <th>S</th> </tr> </thead> <tbody> <tr> <td></td> <td></td> <td>1</td> <td>2</td> <td>3</td> <td>4</td> <td>5</td> </tr> <tr> <td>6</td> <td>7</td> <td>8</td> <td>9</td> <td>10</td> <td>11</td> <td>12</td> </tr> <tr> <td>13</td> <td>14</td> <td>15</td> <td>16</td> <td>17</td> <td>18</td> <td>19</td> </tr> <tr> <td>20</td> <td>21</td> <td>22</td> <td>23</td> <td>24</td> <td>25</td> <td>26</td> </tr> <tr> <td>27</td> <td>28</td> <td>29</td> <td>30</td> <td>31</td> <td></td> <td></td> </tr> </tbody> </table>	S	M	TU	W	TH	F	S			1	2	3	4	5	6	7	8	9	10	11	12	13	14	15	16	17	18	19	20	21	22	23	24	25	26	27	28	29	30	31			
S	M	TU	W	TH	F	S																																																																																			
				1	2	3																																																																																			
4	5	6	7	8	9	10																																																																																			
11	12	13	14	15	16	17																																																																																			
18	19	20	21	22	23	24																																																																																			
25	26	27	28	29	30	31																																																																																			
S	M	TU	W	TH	F	S																																																																																			
		1	2	3	4	5																																																																																			
6	7	8	9	10	11	12																																																																																			
13	14	15	16	17	18	19																																																																																			
20	21	22	23	24	25	26																																																																																			
27	28	29	30	31																																																																																					

Emergency information is included in the front of this calendar and in your local telephone book.



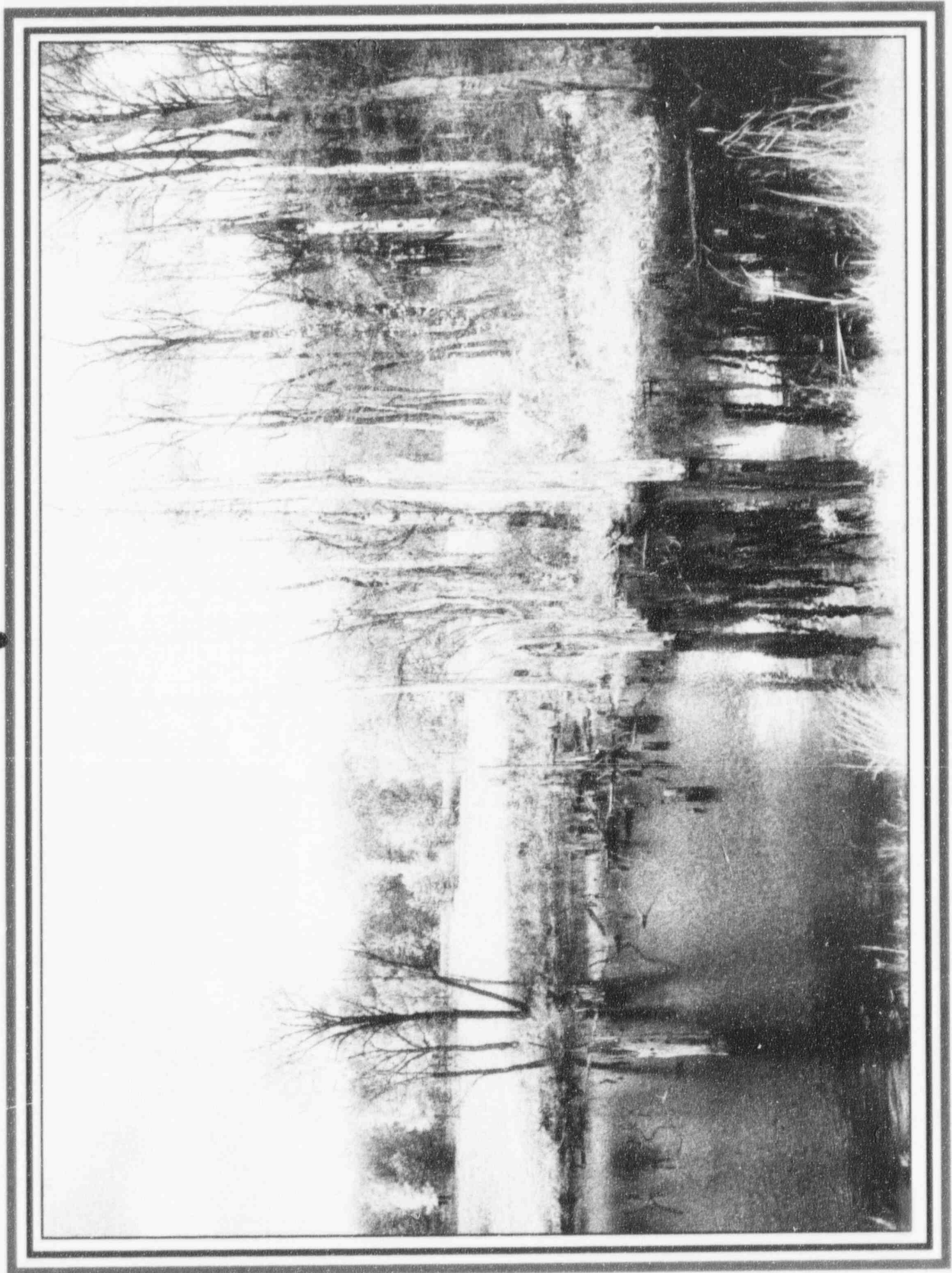
Photograph by Tina Mettler

Over the River ...

October 1996

Sunday	Monday	Tuesday	Wednesday	Thursday	Friday	Saturday																																																																																				
		1	2	3	4 ☾ Last Quarter	5																																																																																				
6	7	8	9 SIREN TESTING 11:00 A.M. 	10	11	12 ● New Moon Columbus Day																																																																																				
13	14 Columbus Day (Observed)	15	16	17	18	19 ☽ First Quarter Sweetest Day																																																																																				
20	21	22 United Nations Day	23	24	25	26 ○ Full Moon																																																																																				
27 Daylight-Saving Time Ends	28	29	30	31 Halloween 	<table border="1"> <caption>September 1996</caption> <thead> <tr><th>S</th><th>M</th><th>TU</th><th>W</th><th>TH</th><th>F</th><th>S</th></tr> </thead> <tbody> <tr><td>1</td><td>2</td><td>3</td><td>4</td><td>5</td><td>6</td><td>7</td></tr> <tr><td>8</td><td>9</td><td>10</td><td>11</td><td>12</td><td>13</td><td>14</td></tr> <tr><td>15</td><td>16</td><td>17</td><td>18</td><td>19</td><td>20</td><td>21</td></tr> <tr><td>22</td><td>23</td><td>24</td><td>25</td><td>26</td><td>27</td><td>28</td></tr> <tr><td>29</td><td>30</td><td></td><td></td><td></td><td></td><td></td></tr> </tbody> </table>	S	M	TU	W	TH	F	S	1	2	3	4	5	6	7	8	9	10	11	12	13	14	15	16	17	18	19	20	21	22	23	24	25	26	27	28	29	30						<table border="1"> <caption>November 1996</caption> <thead> <tr><th>S</th><th>M</th><th>TU</th><th>W</th><th>TH</th><th>F</th><th>S</th></tr> </thead> <tbody> <tr><td></td><td></td><td></td><td></td><td></td><td>1</td><td>2</td></tr> <tr><td>3</td><td>4</td><td>5</td><td>6</td><td>7</td><td>8</td><td>9</td></tr> <tr><td>10</td><td>11</td><td>12</td><td>13</td><td>14</td><td>15</td><td>16</td></tr> <tr><td>17</td><td>18</td><td>19</td><td>20</td><td>21</td><td>22</td><td>23</td></tr> <tr><td>24</td><td>25</td><td>26</td><td>27</td><td>28</td><td>29</td><td>30</td></tr> </tbody> </table>	S	M	TU	W	TH	F	S						1	2	3	4	5	6	7	8	9	10	11	12	13	14	15	16	17	18	19	20	21	22	23	24	25	26	27	28	29	30
S	M	TU	W	TH	F	S																																																																																				
1	2	3	4	5	6	7																																																																																				
8	9	10	11	12	13	14																																																																																				
15	16	17	18	19	20	21																																																																																				
22	23	24	25	26	27	28																																																																																				
29	30																																																																																									
S	M	TU	W	TH	F	S																																																																																				
					1	2																																																																																				
3	4	5	6	7	8	9																																																																																				
10	11	12	13	14	15	16																																																																																				
17	18	19	20	21	22	23																																																																																				
24	25	26	27	28	29	30																																																																																				

Emergency information is included in the front of this calendar and in your local telephone book.



Photograph by Tina Mettler

The Still of Fall

November 1996

Sunday	Monday	Tuesday	Wednesday	Thursday	Friday	Saturday																																																																																				
	<table border="1"> <caption>October 1996</caption> <thead> <tr> <th>S</th> <th>M</th> <th>TU</th> <th>W</th> <th>TH</th> <th>F</th> <th>S</th> </tr> </thead> <tbody> <tr><td></td><td></td><td>1</td><td>2</td><td>3</td><td>4</td><td>5</td></tr> <tr><td>6</td><td>7</td><td>8</td><td>9</td><td>10</td><td>11</td><td>12</td></tr> <tr><td>13</td><td>14</td><td>15</td><td>16</td><td>17</td><td>18</td><td>19</td></tr> <tr><td>20</td><td>21</td><td>22</td><td>23</td><td>24</td><td>25</td><td>26</td></tr> <tr><td>27</td><td>28</td><td>29</td><td>30</td><td>31</td><td></td><td></td></tr> </tbody> </table>	S	M	TU	W	TH	F	S			1	2	3	4	5	6	7	8	9	10	11	12	13	14	15	16	17	18	19	20	21	22	23	24	25	26	27	28	29	30	31			<table border="1"> <caption>December 1996</caption> <thead> <tr> <th>S</th> <th>M</th> <th>TU</th> <th>W</th> <th>TH</th> <th>F</th> <th>S</th> </tr> </thead> <tbody> <tr><td>1</td><td>2</td><td>3</td><td>4</td><td>5</td><td>6</td><td>7</td></tr> <tr><td>8</td><td>9</td><td>10</td><td>11</td><td>12</td><td>13</td><td>14</td></tr> <tr><td>15</td><td>16</td><td>17</td><td>18</td><td>19</td><td>20</td><td>21</td></tr> <tr><td>22</td><td>23</td><td>24</td><td>25</td><td>26</td><td>27</td><td>28</td></tr> <tr><td>29</td><td>30</td><td>31</td><td></td><td></td><td></td><td></td></tr> </tbody> </table>	S	M	TU	W	TH	F	S	1	2	3	4	5	6	7	8	9	10	11	12	13	14	15	16	17	18	19	20	21	22	23	24	25	26	27	28	29	30	31							1	2
S	M	TU	W	TH	F	S																																																																																				
		1	2	3	4	5																																																																																				
6	7	8	9	10	11	12																																																																																				
13	14	15	16	17	18	19																																																																																				
20	21	22	23	24	25	26																																																																																				
27	28	29	30	31																																																																																						
S	M	TU	W	TH	F	S																																																																																				
1	2	3	4	5	6	7																																																																																				
8	9	10	11	12	13	14																																																																																				
15	16	17	18	19	20	21																																																																																				
22	23	24	25	26	27	28																																																																																				
29	30	31																																																																																								
3 ☾ Last Quarter	4	5 Election Day	6	7	8	9																																																																																				
10 ● New Moon	11 Veterans' Day	12	13	14	15	16																																																																																				
17 ☽ First Quarter	18	19	20	21	22	23																																																																																				
24 ○ Full Moon	25	26	27	28  Thanksgiving Day	29	30																																																																																				

Emergency information is included in the front of this calendar and in your local telephone book.



Photograph by Scott Roth

Peace on Earth

December 1996

Sunday	Monday	Tuesday	Wednesday	Thursday	Friday	Saturday																																																																																				
1	2	3 ☾ Last Quarter	4	5	6 First Day of Hanukkah	7																																																																																				
8	9	10 ● New Moon	11	12	13 Last Day of Hanukkah	14																																																																																				
15	16	17 ☽ First Quarter	18	19	20	21 First Day of Winter																																																																																				
22	23	24 ○ Full Moon	25  Christmas Day	26	27	28																																																																																				
29	30	31			<table border="1"> <caption>November 1996</caption> <thead> <tr> <th>S</th> <th>M</th> <th>TU</th> <th>W</th> <th>TH</th> <th>F</th> <th>S</th> </tr> </thead> <tbody> <tr> <td></td> <td></td> <td></td> <td></td> <td></td> <td>1</td> <td>2</td> </tr> <tr> <td>3</td> <td>4</td> <td>5</td> <td>6</td> <td>7</td> <td>8</td> <td>9</td> </tr> <tr> <td>10</td> <td>11</td> <td>12</td> <td>13</td> <td>14</td> <td>15</td> <td>16</td> </tr> <tr> <td>17</td> <td>18</td> <td>19</td> <td>20</td> <td>21</td> <td>22</td> <td>23</td> </tr> <tr> <td>24</td> <td>25</td> <td>26</td> <td>27</td> <td>28</td> <td>29</td> <td>30</td> </tr> </tbody> </table>	S	M	TU	W	TH	F	S						1	2	3	4	5	6	7	8	9	10	11	12	13	14	15	16	17	18	19	20	21	22	23	24	25	26	27	28	29	30	<table border="1"> <caption>January 1997</caption> <thead> <tr> <th>S</th> <th>M</th> <th>TU</th> <th>W</th> <th>TH</th> <th>F</th> <th>S</th> </tr> </thead> <tbody> <tr> <td></td> <td></td> <td></td> <td>1</td> <td>2</td> <td>3</td> <td>4</td> </tr> <tr> <td>5</td> <td>6</td> <td>7</td> <td>8</td> <td>9</td> <td>10</td> <td>11</td> </tr> <tr> <td>12</td> <td>13</td> <td>14</td> <td>15</td> <td>16</td> <td>17</td> <td>18</td> </tr> <tr> <td>19</td> <td>20</td> <td>21</td> <td>22</td> <td>23</td> <td>24</td> <td>25</td> </tr> <tr> <td>26</td> <td>27</td> <td>28</td> <td>29</td> <td>1</td> <td>2</td> <td></td> </tr> </tbody> </table>	S	M	TU	W	TH	F	S				1	2	3	4	5	6	7	8	9	10	11	12	13	14	15	16	17	18	19	20	21	22	23	24	25	26	27	28	29	1	2	
S	M	TU	W	TH	F	S																																																																																				
					1	2																																																																																				
3	4	5	6	7	8	9																																																																																				
10	11	12	13	14	15	16																																																																																				
17	18	19	20	21	22	23																																																																																				
24	25	26	27	28	29	30																																																																																				
S	M	TU	W	TH	F	S																																																																																				
			1	2	3	4																																																																																				
5	6	7	8	9	10	11																																																																																				
12	13	14	15	16	17	18																																																																																				
19	20	21	22	23	24	25																																																																																				
26	27	28	29	1	2																																																																																					

Emergency information is included in the front of this calendar and in your local telephone book.

Names and numbers

Police _____

Fire _____

Ambulance _____

Sheriff _____

Doctor _____

Dentist _____

Hospital _____

Veterinarian _____

Name _____ Number _____

1997 Calendar

January						
S	M	TU	W	TH	F	S
			1	2	3	4
5	6	7	8	9	10	11
12	13	14	15	16	17	18
19	20	21	22	23	24	25
26	27	28	29	30	31	

February						
S	M	TU	W	TH	F	S
						1
2	3	4	5	6	7	8
9	10	11	12	13	14	15
16	17	18	19	20	21	22
23	24	25	26	27	28	

March						
S	M	TU	W	TH	F	S
						1
2	3	4	5	6	7	8
9	10	11	12	13	14	15
16	17	18	19	20	21	22
23	24	25	26	27	28	29
30	31					

April						
S	M	TU	W	TH	F	S
		1	2	3	4	5
6	7	8	9	10	11	12
13	14	15	16	17	18	19
20	21	22	23	24	25	26
27	28	29	30			

May						
S	M	TU	W	TH	F	S
				1	2	3
4	5	6	7	8	9	10
11	12	13	14	15	16	17
18	19	20	21	22	23	24
25	26	27	28	29	30	31

June						
S	M	TU	W	TH	F	S
1	2	3	4	5	6	7
8	9	10	11	12	13	14
15	16	17	18	19	20	21
22	23	24	25	26	27	28
29	30					

July						
S	M	TU	W	TH	F	S
		1	2	3	4	5
6	7	8	9	10	11	12
13	14	15	16	17	18	19
20	21	22	23	24	25	26
27	28	29	30	31		

August						
S	M	TU	W	TH	F	S
					1	2
3	4	5	6	7	8	9
10	11	12	13	14	15	16
17	18	19	20	21	22	23
24	25	26	27	28	29	30
31						

September						
S	M	TU	W	TH	F	S
	1	2	3	4	5	6
7	8	9	10	11	12	13
14	15	16	17	18	19	20
21	22	23	24	25	26	27
28	29	30				

October						
S	M	TU	W	TH	F	S
			1	2	3	4
5	6	7	8	9	10	11
12	13	14	15	16	17	18
19	20	21	22	23	24	25
26	27	28	29	30	31	

November						
S	M	TU	W	TH	F	S
						1
2	3	4	5	6	7	8
9	10	11	12	13	14	15
16	17	18	19	20	21	22
23	24	25	26	27	28	29
30						

December						
S	M	TU	W	TH	F	S
	1	2	3	4	5	6
7	8	9	10	11	12	13
14	15	16	17	18	19	20
21	22	23	24	25	26	27
28	29	30	31			

**WE HAVE
BEEN
NOTIFIED**

If you DO NOT need assistance, please place this side in a window — visible to the street — during an emergency.

Perry Power Plant
P.O. Box 97
Perry, Ohio 44081
(216) 259-3737

Bulk Rate
U.S. Postage
PAID
Permit No. 409
Cleveland, Ohio

Postal Customer

**DO NOT
DISCARD**

**Ashtabula County
Emergency Management Agency**
25 West Jefferson Street
Jefferson, Ohio 44047
(216) 576-9148
1-800-228-6974

**Geauga County
Emergency Management Agency**
12518 Merritt Road
Chardon, Ohio 44024-9049
(216) 285-9200

**Lake County
Emergency Management Agency**
P.O. Box 480
Mentor, Ohio 44061-0480
(216) 931-5252

**Ohio Emergency
Management Agency**
Ohio Department of Public Safety
2855 West Dublin Granville Road
Columbus, Ohio 43235-2206
(614) 889-7150

Centerior
Perry Power Plant
P.O. Box 97
Perry, Ohio 44081
(216) 259-3737

Important Emergency Information