

August 28, 1984

Docket Nos. 50-325/324

LICENSEE: Carolina Power & Light Company (CP&L)

FACILITY: Brunswick Steam Electric Plant, Units 1 and 2

SUBJECT: SUMMARY OF MEETING HELD ON AUGUST 21, 1984, TO DISCUSS  
THE CP&L METHODOLOGY FOR THE INTEGRATED SCHEDULING PLAN

Background:

At a meeting on March 21, 1984 with CP&L, the Brunswick Integrated Scheduling Plan was discussed briefly. CP&L stated that it was pursuing development of the methodology for scheduling and that it would be better able to discuss the methodology and the milestone network in August. This was confirmed in a letter dated March 29, 1984. Accordingly, a meeting was scheduled for August 21, 1984. The attendance list is given in Enclosure 1. The outline of the CP&L presentation is given in Enclosure 2.

Meeting Summary:

Mr. P. Howe, Vice President, Brunswick Nuclear Project, introduced the CP&L presentation by giving an introduction and history of the CP&L plans for a five-year program. He indicated that the program had its basis in the plant level staff and was developed over a period of several years. The CP&L management is dedicated to the success of the program and plans to apply it company-wide as rapidly as is practical.

A video tape presentation which was used for orientation of the CP&L employees was shown. This was followed by a step-by-step presentation by Mr. G. Oliver of the methodology that had been formulated in order to be able to schedule the activities at the Brunswick plant over a five-year period. His presentation followed the outline given in Enclosure 2.

Mr. P. Howe closed the CP&L presentation with conclusions regarding scheduling of the long range plan and answered the remaining questions.

8409040423 840828  
PDR ADOCK 05000324  
P PDR

CP&L agreed to provide a submittal by the end of November 1984 regarding a licensing condition much like that recently issued to the Pilgrim Nuclear Power Station. The first five-year schedule is expected to be prepared and issued by the end of February 1985.

Original signed by/

Marshall Grotenhuis, Project Manager  
Operating Reactors Branch #2  
Division of Licensing

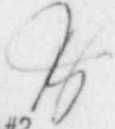
Enclosures:  
As stated

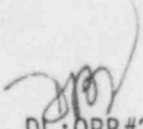
cc w/enclosures:  
See next page

DISTRIBUTION

Docket File

NRC PDR  
Local PDR  
ORB#2 Reading  
ORB#2 Mtg Summary File  
DVassallo  
MGrotenhuis  
OELD  
ELJordan  
JNGrace  
ACRS (10)  
NRC Participants  
NSIC  
ACutter, CP&L  
PHowe, CP&L

  
DL:ORB#2  
MGrotenhuis:ajs  
08/26/84

  
DL:ORB#2  
DVassallo  
08/28/84

Mr. E. E. Utley  
Carolina Power & Light Company  
Brunswick Steam Electric Plant, Units 1 and 2

cc:

Richard E. Jones, Esquire  
Carolina Power & Light Company  
336 Fayetteville Street  
Raleigh, North Carolina 27602

George F. Trowbridge, Esquire  
Shaw, Pittman, Potts and Trowbridge  
1800 M Street, N. W.  
Washington, D. C. 20036

Mr. Charles R. Dietz  
Plant Manager  
Post Office Box 458  
Southport, North Carolina 28461

Mr. Franky Thomas, Chairman  
Board of Commissioners  
Post Office Box 249  
Bolivia, North Carolina 28422

Mrs. Chrys Baggett  
State Clearinghouse  
Budget and Management  
116 West Jones Street  
Raleigh, North Carolina 27603

U. S. Environmental Protection  
Agency  
Region IV Office  
Regional Radiation Representative  
345 Courtland Street, N. W.  
Atlanta, Georgia 30308

Resident Inspector  
U. S. Nuclear Regulatory Commission  
Star Route 1  
Post Office Box 208  
Southport, North Carolina 28461

James P. O'Reilly  
Regional Administrator  
Region II Office  
U. S. Nuclear Regulatory Commission  
101 Marietta Street, Suite 3100  
Atlanta, Georgia 30303

Dayne H. Brown, Chief  
Radiation Protection Branch  
Division of Facility Services  
Department of Human Resources  
Post Office Box 12200  
Raleigh, North Carolina 27605

ATTENDANCE LIST OF AUGUST 21, 1984 MEETING  
REGARDING INTEGRATED SCHEDULING PLAN

<u>Name</u>	<u>Affiliation</u>
M. Grotenhuis	NRC/DL
A. B. Cutter	CP&L
S. R. Zimmerman	CP&L
P. W. Howe	CP&L
P. R. Bemis	NRC/RII
D. O. Myers	NRC/RII/SRI
A. J. Cappucci	NUS
L. S. Watson	Bechtel/SERCH
L. V. Wagoner	CP&L
R. J. Fasnacht	CP&L
G. J. Oliver	CP&L
G. C. Lainas	NRC/DL
D. B. Vassallo	NRC/DL
J. Hannon	-NRC/DL

CAROLINA POWER & LIGHT COMPANY  
BRUNSWICK NUCLEAR PROJECT

LONG RANGE PLANNING

PRESENTATION TO USNRC - AUGUST 21, 1984

- |      |   |                             |
|------|---|-----------------------------|
| I.   | INTRODUCTION/HISTORY  | P. W. HOWE                  |
| II.  | INTEGRATED PLANNING, BUDGETING,<br>SCHEDULING SYSTEM (IPBS) | G. J. OLIVER                |
| III. | INTEGRATED PLANNING   | G. J. OLIVER                |
| IV.  | PROGRAM IMPLEMENTATION                                      | G. J. OLIVER                |
| V.   | CONCLUSION/QUESTIONS  | G. J. OLIVER/<br>P. W. HOWE |



CAROLINA POWER & LIGHT COMPANY  
BRUNSWICK NUCLEAR PROJECT

II. INTEGRATED PLANNING, BUDGETING,  
AND SCHEDULING SYSTEM (IPBS)

A. Organization

B. IPBS Video Tape

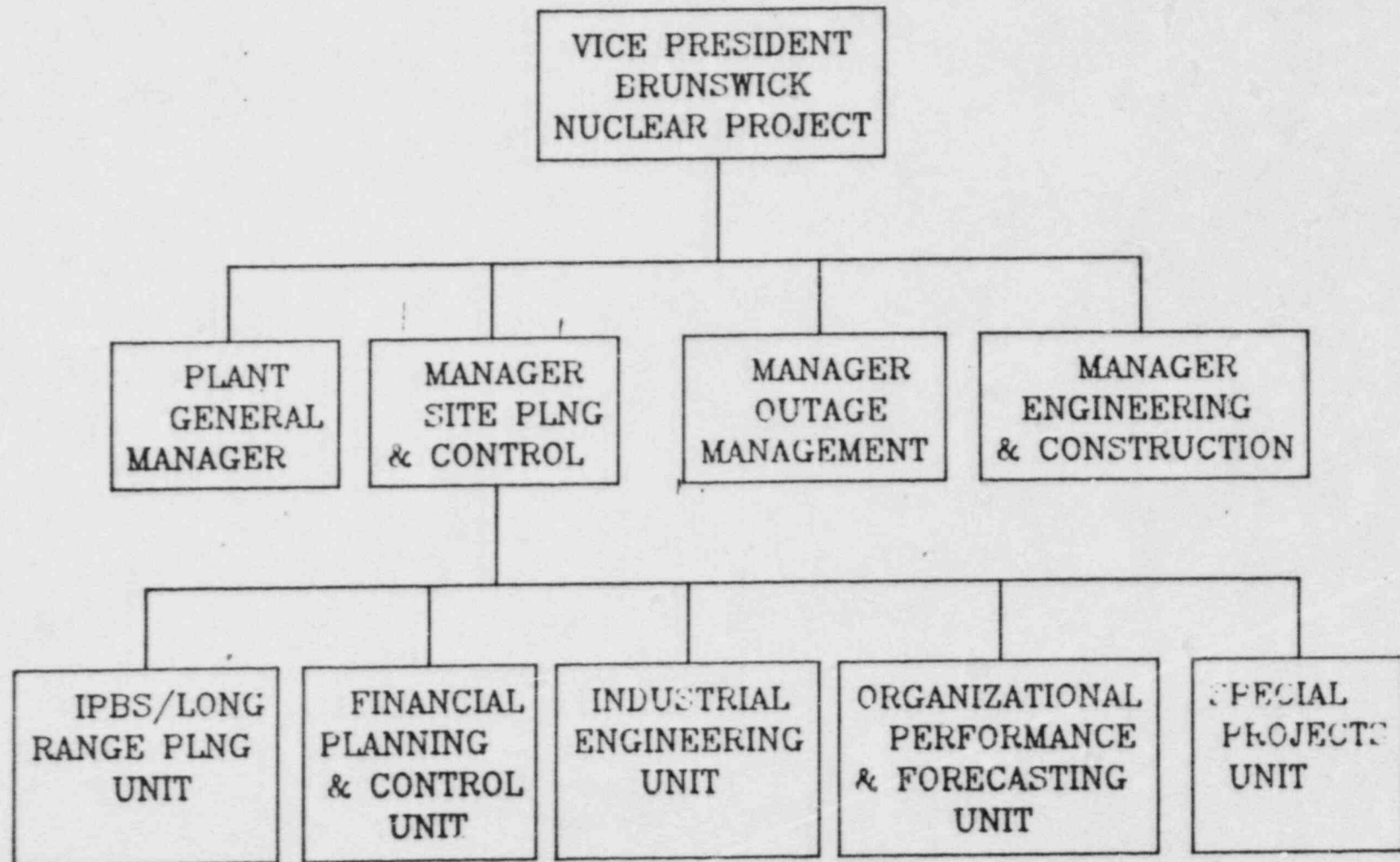
C. Front-End Planning

1. Project Proposal
2. Project Plan
3. Site Review Group/  
Management Review Group

D. Long Term Direction

CAROLINA POWER & LIGHT COMPANY  
BRUNSWICK NUCLEAR PROJECT

SITE PLANNING AND CONTROLS SECTION



CAROLINA POWER & LIGHT COMPANY  
BRUNSWICK NUCLEAR PROJECT

III INTEGRATED PLANNING

o Scope

- Known Modifications from IPBS
- Routine Workload Activities
- Potential Future Projects

o Scheduling Methodology

- Schedule Index
  - : Identifies Scheduling Priority
- Benefit Areas
  - : Plant Nuclear Safety
  - : Personnel Safety
  - : ALARA
  - : Surveillance Requirements
  - : Maintenance Requirements
  - : Plant Availability/Reliability
  - : Ease of Plant Operations
  - : Total Cost



CAROLINA POWER & LIGHT COMPANY  
BRUNSWICK NUCLEAR PLANT

IV PROGRAM IMPLEMENTATION

- o Report on Program Progress
- o CP&L Prepares Draft Schedule
- o Review with NRC
- o CP&L Formally Issue Master Project Schedule
- o Continuing Dialogue between CP&L and NRC
- o Periodic Reissuance of Master Project Schedule

CAROLINA POWER & LIGHT COMPANY  
BRUNSWICK NUCLEAR PLANT

V CONCLUSION

o CP&L Unique Features:

- The Brunswick program addresses a 2 unit site
- CP&L must coordinate outages between three separate nuclear sites.

o Major Points of Brunswick Program:

- Program supports CP&L commitment to continued safe operation of Brunswick.
- Realistic economic considerations must be addressed
- Integrated planning is key to effective management control of plant modifications.
- Planning variables more related to safety will be incorporated with experience.
- Front-end planning is key to realistic schedule commitments.
- Cost and benefit are combined to assess relative priority of each modification.
- Integrated planning establishes licensing commitments which can be met.