



ENTERGY

Entergy Operations, Inc.

PO Box 8

Merid LA 70066

Te 504 734-7774

R. F. Burski

Director

Nuclear Safety

Regulatory

W3F1-92-0154

A4.05

QA

May 6, 1992

U.S. Nuclear Regulatory Commission
ATTN: Document Control Desk
Washington, D.C. 20555

Subject: Waterford 3 SES
Docket No. 50-382
License No. NPF-38
Safety Information Booklet

Gentlemen:

Attached for information and use are three copies of the Waterford 3 booklet (April 1992 issue) entitled, "Safety Information - Plans to Help You during Emergencies." Copies of this booklet were recently distributed to the general public in the Waterford 3 area per the requirements of 10CFR50 Appendix E. Please advise if you desire additional copies.

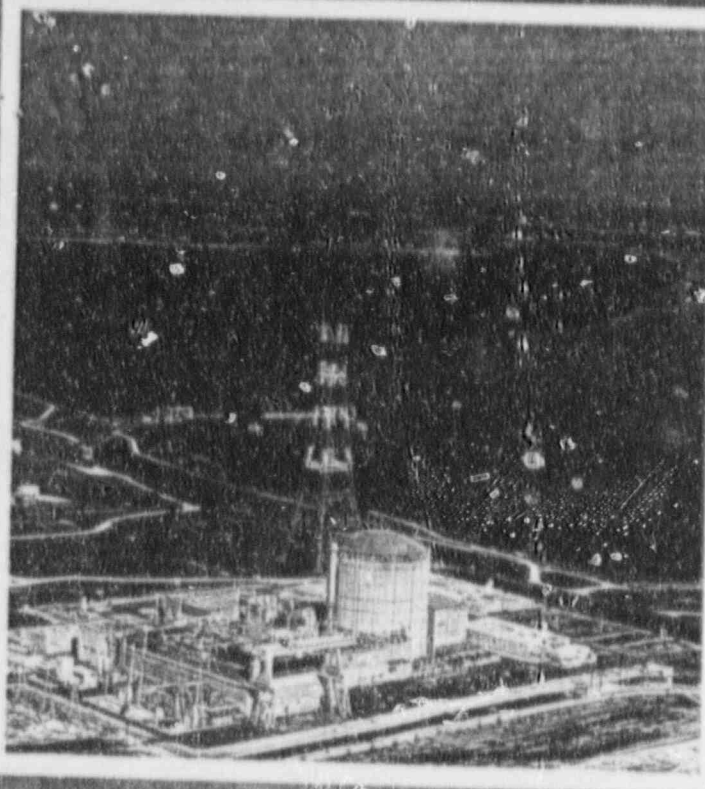
Very truly yours,

RFB/CJT/ssf
Attachment

(w/o Attachment)
cc: R.D. Martin, NRC Region IV
R.B. McGehee
N.S. Reynolds
NRC Resident Inspectors Office

9205110229 920506
PDR ADOCK 05000382
F PDR

*A045
1/3 Colored
booklets*



WATERFORD 3 NUCLEAR UNIT

SAFETY INFORMATION

Plans to Help You
during Emergencies:

Please Read This and
Keep It in a Handy Place

Put your section number here
after you read this booklet.

APRIL 1992



What To Do If You Hear The Outdoor Sirens

- **STAY CALM.** You will have time to take the needed steps.
- **TURN ON YOUR RADIO OR TV.** You will be told what to do.
 - Radio - WWL-870 AM
 - Radio - WCKW-92.3 FM/1010 AM
 - Radio - WADU-830 AM/94.9 FM
 - TV - Channels 4-WWL, 6-WDSU, 8-WVUE, 12-WYES and 26-WGNO
- **DO NOT USE THE PHONE.** The lines are needed for official business.
- If you are told to **PROTECT YOUR BREATHING:**
 - Cover your nose and mouth with a handkerchief or other cloth.
 - Close the windows and doors if you are in a building or car.
 - Turn off heating or cooling systems. Turn off window and attic fans.
- If you are told to **SHELTER IN PLACE:**
 - Go inside your house or some other building.
 - Stay inside until your radio or TV says you can leave safely.
 - Turn off heating or cooling systems. Turn off window and attic fans.
 - Keep your pets inside.
 - Listen to the radio or TV for further advice.
- If you are told to **EVACUATE:**
 - Be sure that this order applies to your section of the map inside this booklet. If it does, follow the next steps.
 - Get ready to leave your home for a few days. If you have children in school, they will be taken to the reception center for their school. Meet them there.
 - Pack only what you will need most. Take this booklet, clothes, medicine, baby supplies, portable radio (if you have one), checkbook and credit cards.
 - Turn off the lights and your household appliances.
 - Lock your house. The section where you live will be guarded while you are away.
 - Use your own car if you can. Take neighbors who need a ride, if you have room. If you have no ride, ask one of your neighbors for a ride. If you cannot do that, go to one of the pickup points listed on the chart inside this booklet. You can get a ride there.
 - Turn on the car radio for information.
 - Go to the reception center for your section of the map. The chart inside this booklet and the radio or TV will tell you where to go.

**PLEASE READ THROUGH THIS BOOKLET.
IT TELLS YOU MORE ABOUT HOW TO BE
READY FOR EMERGENCIES.**

A Message to Our Neighbors and Friends

Your State and Parish governments have prepared this booklet to tell you what to do if there is an emergency at Waterford 3. That is not likely to happen, but you need to be prepared. You can also use this booklet in other kinds of emergencies, such as hurricanes, tornadoes, or spilled chemicals.

Please take the time to read this booklet now. Make sure that all members of your family understand what it says. Talk it over with your neighbors and friends. Some of them may need your help, or you may need theirs. If you know someone who is blind or does not read well, please read the booklet to them. The best way to be safe in an emergency is to know what to do and to help each other.

Keep this booklet in a handy place. If you want more copies of it, you may get them at one of these offices.

- St. Charles Parish Department of Emergency Preparedness, Parish Courthouse, River Road (Highway 18), Hahnville, La.
- St. John the Baptist Parish Civil Defense, Emergency Operations Center, 1801 West Airline Highway, LaPlace, La.
- Louisiana Power & Light Company District Offices on Paul Maillard Road in Luling, or at 2100 West Airline Highway in Reserve, La.

If there is an emergency, outdoor sirens will warn you. When you hear the sirens, turn on your radio or TV. They will then tell you more about it. Please stay tuned to one of these local stations as long as the emergency lasts.

- Radio - WWL-870 AM
- Radio - WCKW-92.3 FM/1010 AM
- Radio - WADU-830 AM/94.9 FM

You can also get information about an emergency at Waterford 3 on New Orleans radio and TV stations.

- TV - Channels 4-WWL, 6-WDSU, 8-WVUE, 12-WYES and 26-WGNO

Sincerely,



J.M. "Ikey" Lucas,
Director
St. Charles Parish
Department
of Emergency
Preparedness



B.P. (Bert) Madere,
Director
St. John the Baptist
Parish Civil Defense



D.F. (Dan) Packer
Waterford 3
Plant Manager

What Radiation Is

Everything around you is made up of small particles called atoms. The atoms in some matter are "radioactive" and can split to form new matter. When this happens, it gives off energy called "radiation." This energy can be used to make electricity, to treat cancer, and in other helpful ways.

You live with radiation all the time, and take some into your body every day. But sometimes you must be careful how much of this radiation enters your body. If the amount of radiation in the air is large, you must protect yourself from it. Your house or some other building can often be a good shelter if there is too much radiation in the air.

The amount of radiation you take into your body is measured in "millirems." Here are some examples of what you receive in one year, and where it comes from.

- The earth and space — about 80 millirems
- Your food — about 24 millirems

Most persons living in the St. Charles or St. John the Baptist Parishes get about 100 millirems per year in these natural ways. You may also get radiation in other ways.

- 2 or 3 chest x-rays — about 40 millirems
- The material in your house — about 34 millirems
- A coast-to-coast airline flight — about 2 millirems
- A color TV set — about 1 millirem

Living next to a plant like Waterford 3 will add less than one millirem per year.

Here is how Waterford 3 works. Uranium atoms in the "reactor core" split to produce heat. This heat makes water hot enough to produce steam. This steam is then used to make electricity in the same way electricity is made in a plant that burns coal or oil.

When the atoms in the core split, radioactive matter is formed. The plant blocks its release in several ways.

1. **Metal fuel rods seal the uranium and most of the radioactive matter inside the core.**
2. **A container with a steel wall 8½ inches thick surrounds the core and seals it in.**
3. **A second container with a steel wall two inches thick is around the first one.**
4. **A concrete wall three feet thick seals in all of the other parts.**

If there is an accident, Waterford 3 can block the release of all or most of the radiation. But in a severe accident, some radioactive matter may be released. If it is, this matter will be carried in the air. If that happens, an emergency will be declared. You may then be asked to do certain things to protect yourself until the wind carries the radioactive matter away.

Radiation Emergencies

There are four kinds of emergencies at nuclear power plants.

1. **Unusual Event.** A minor problem has taken place. No release of radioactive matter is expected. Federal, State and Parish officials will be told of this. You will not have to do anything.

2. **Alert.** This is also a minor problem. Small amounts of radioactive matter could be released at the plant. Federal, State and Parish officials will be told of this and will be asked to stand by. It is not likely that you will have to do anything.

3. **Site Area Emergency.** This is a more severe problem. Small amounts of radioactive matter could be released into the area outside of the plant. Federal, State and Parish officials will prepare to help you if you need to take special action. If such action is needed, the sirens will be turned on. You should then listen to local radio or TV stations for advice.

4. **General Emergency.** This is the most severe kind of emergency. Radioactive matter could be released outside the plant. Federal, State and Parish officials will work closely with experts at the plant. You may have to protect yourself. If action is needed, the sirens will be turned on. You should then listen to local radio or TV stations for advice.

Remember that a nuclear plant is not like a bomb. It **CANNOT** explode. You will have time to do what is needed if you have to protect yourself. Please read the rest of this booklet. It will tell you how to prepare for an emergency.

Emergency Action Plans

If an accident occurs at Waterford 3, experts at the plant will help your State and Parish agencies decide how serious it is. You will be told what actions to take, based on the plans described here. Be sure you understand them. If you have any questions while reading this booklet, ask one of these offices for help **now**. That way you will be prepared before an emergency can come up.

- **St. Charles Parish Department of Emergency Preparedness**, Parish Courthouse, River Road (Highway 18), Hahnville, La., Phone Number (504) 783-5050
- **St. John the Baptist Parish Civil Defense, Emergency Operations Center**, 1801 West Airline Highway, LaPlace, La., Phone Number (504) 652-2222

When Will An Emergency Affect You?

The Nuclear Regulatory Commission (NRC) and the Environmental Protection Agency (EPA) have studied this question. They have learned that you most likely will not have to do anything. If you live as close as ten miles from Waterford 3, though, you should be prepared.

If your home or the place you work is on the map inside this booklet, an emergency may or may not affect you. An accident could affect some parts of the map and not others. That will depend on where the wind is coming from, how strong it is, and on how severe the accident is. To help you know if you will have to take some action or not, the map has these 16 sections.

- A1, A2, A3, A4
- B1, B2, B3, B4
- C1, C2, C3, C4
- D1, D2, D3, D4

In an emergency, radio and TV stations will tell which sections on the map will be affected. Unfold the booklet **at this time** and pick out the section of the map where you live. Put that number in the blank on the front of this booklet to make it easy to find later if you need it. Then come back to this page and read on.

How Will You Be Told About The Emergency?

Outdoor sirens will be turned on if there is an emergency in your Parish. These sirens have been put in the best places in the St. Charles and St. John the Baptist Parishes for you to hear them. Firemen and deputies may drive through the area to warn you, too. If you are in a marsh or swamp, you will be warned by State or Parish Officials. If you are in a boat on the River, the sirens on the shore will warn you. The Coast Guard may also warn you.

The sirens will sound only during testing and during emergencies.

- **Tests** — Local governments will test outdoor sirens at noon on the first Thursday of each month. These are just tests. You do not need to do anything.

- **Emergencies** — If there is an emergency, you will hear a wavering sound that stays on for 3 to 5 minutes. This means that you should turn on your radio or TV. These stations will tell you which sections of the map are affected by the emergency. They will also tell you what actions to take if you are in one of the affected sections.

- Radio - WWL-870 AM
- Radio - WCKW-92.3 FM/1010 AM
- Radio - WADU-830 AM, 94.9 FM
- TV - Channels 4-WWL, 6-WDSU, 8-WVUE, 12-WYES and 26-WGNO

Should You Use The Phone?

If there is an emergency, the phone lines will be needed for official business. **Do not** use your phone unless you or someone you know is injured or too sick to do what is needed. If you must use the phone, keep your call very short. This booklet and your radio and TV will tell you what actions you might need to take. Read it through and be sure you understand it. Clear up all questions you have **now**, not later.

Do not listen to rumors. Turn on your radio or TV for up-to-date information during an emergency.

What Are The ACTIONS You Might Need To Take?

The three actions you might be asked to take are called **Protect Your Breathing, Shelter in Place, or Evacuate**. They are described at right. Be sure you are clear about them. If you have neighbors who are hard of hearing or do not see well, please help them. Be sure they know what they are supposed to do in an emergency. Fill out the **Special Needs Card** in this booklet and mail it for them if they cannot do this themselves. Use this card also if you or someone you know needs a wheelchair or needs special help for some other reason. That way you can be sure to get the special help needed.

What If You Are Told To PROTECT YOUR BREATHING?

This means you should take these steps.

- Cover your nose and mouth with a handkerchief or other cloth.
- Close the windows and doors if you are in a building or a car.
- Turn off heating or cooling systems. Turn off window or attic fans.

What If You Are Told To SHELTER IN PLACE?

This means you should protect yourself inside your house or some other building. This is a good action to take if there is a short release or small amount of radiation in the air. If your children are in school, they will be protected by school officials. Take these steps to protect yourself.

- Go inside if you are outside. When inside, stay there until your radio or TV says you can leave safely. This is most likely to be after a few hours, rather than a day or more.
- Close all doors and windows.
- Turn off heating or cooling systems. Turn off window or attic fans.
- Keep your pets inside.
- Listen to one of these radio or TV stations for further instructions.
 - Radio - WWL-870 AM
 - Radio - WCKW-92.3 FM/1010 AM
 - Radio - WADU-830 AM/94.9 FM
 - TV - Channels 4-WWL, 6-WDSU, 8-WVUE, 12-WYES and 26-WGNO

What If You Are Told To EVACUATE?

This means that you should move to a place more than ten miles from Waterford 3. Plans have been made to give you housing at special reception centers if you need it. Be sure all members of your family know where to meet in an emergency. That way you will not have to call them on the phone at that time.

The reception centers are listed on the chart inside this booklet. Unfold it and follow the steps to locate your reception center and how to get there.

If you hear the outdoor sirens, turn on your radio or TV to find out what to do.

- Radio - WWL-870 AM
- Radio - WCKW-92.3 FM/101.9 AM
- Radio - WADU-830 AM/94.9 FM
- TV - Channels 4-WWL, 6-WDSU, 8-WVUE, 13-WYES and 26-WGNB

FOLLOW THE DIRECTIONS GIVEN EVEN IF THEY DIFFER FROM THOSE IN THIS BOOKLET.

Where To Get More Information Or Other Help

Be sure you, the members of your family and your friends understand the information in this booklet. All of you will then know what to do in an emergency. You can be prepared ahead of time and will not have to try to use the phone when the lines are busy. Call or write to one of the offices below NOW if you have questions about this booklet.

- **St. Charles Parish Department of Emergency Preparedness**, Parish Courthouse, River Road (Highway 18), Hahnville, La., Phone Number (504) 783-5050
- **St. John the Baptist Parish Civil Defense, Emergency Operations Center**, 1801 West Airline Highway, LaPlace, La., Phone Number (504) 652-2222

Do NOT Listen to Rumors. Turn on your radio or TV for up-to-date information during an emergency.

**OVERSIZE
DOCUMENT
PAGE PULLED**

SEE APERTURE CARDS

NUMBER OF OVERSIZE PAGES FILMED ON APERTURE CARDS 1

10-6220115026

APERTURE CARD/HARD COPY AVAILABLE FROM
RECORDS AND REPORTS MANAGEMENT BRANCH

RECORDED