

---

---

# Evaluation of Nuclear Facility Decommissioning Projects

Summary Report  
Three Mile Island Unit 2 Polar Crane Recovery

---

---

Prepared by D. H. Doerge, R. L. Miller

UNC Nuclear Industries

Prepared for  
U.S. Nuclear Regulatory  
Commission

## NOTICE

This report was prepared as an account of work sponsored by an agency of the United States Government. Neither the United States Government nor any agency thereof, or any of their employees, makes any warranty, expressed or implied, or assumes any legal liability of responsibility for any third party's use, or the results of such use, of any information, apparatus, product or process disclosed in this report, or represents that its use by such third party would not infringe privately owned rights.

## NOTICE

### Availability of Reference Materials Cited in NRC Publications

Most documents cited in NRC publications will be available from one of the following sources:

1. The NRC Public Document Room, 1717 H Street, N.W.  
Washington, DC 20555
2. The NRC/GPO Sales Program, U.S. Nuclear Regulatory Commission,  
Washington, DC 20555
3. The National Technical Information Service, Springfield, VA 22161

Although the listing that follows represents the majority of documents cited in NRC publications, it is not intended to be exhaustive.

Referenced documents available for inspection and copying for a fee from the NRC Public Document Room include NRC correspondence and internal NRC memoranda; NRC Office of Inspection and Enforcement bulletins, circulars, information notices, inspection and investigation notices; Licensee Event Reports; vendor reports and correspondence; Commission papers; and applicant and licensee documents and correspondence.

The following documents in the NUREG series are available for purchase from the NRC/GPO Sales Program: formal NRC staff and contractor reports, NRC-sponsored conference proceedings, and NRC booklets and brochures. Also available are Regulatory Guides, NRC regulations in the *Code of Federal Regulations*, and *Nuclear Regulatory Commission Issuances*.

Documents available from the National Technical Information Service include NUREG series reports and technical reports prepared by other federal agencies and reports prepared by the Atomic Energy Commission, forerunner agency to the Nuclear Regulatory Commission.

Documents available from public and special technical libraries include all open literature items, such as books, journal and periodical articles, and transactions. *Federal Register* notices, federal and state legislation, and congressional reports can usually be obtained from these libraries.

Documents such as theses, dissertations, foreign reports and translations, and non-NRC conference proceedings are available for purchase from the organization sponsoring the publication cited.

Single copies of NRC draft reports are available free, to the extent of supply, upon written request to the Division of Technical Information and Document Control, U.S. Nuclear Regulatory Commission, Washington, DC 20555.

Copies of industry codes and standards used in a substantive manner in the NRC regulatory process are maintained at the NRC Library, 7920 Norfolk Avenue, Bethesda, Maryland, and are available there for reference use by the public. Codes and standards are usually copyrighted and may be purchased from the originating organization or, if they are American National Standards, from the American National Standards Institute, 1430 Broadway, New York, NY 10018.

---

---

# Evaluation of Nuclear Facility Decommissioning Projects

Summary Report  
Three Mile Island Unit 2 Polar Crane Recovery

---

---

Manuscript Completed: July 1984  
Date Published: August 1984

Prepared by  
D. H. Doerge, R. L. Miller

Decommissioning Programs Department  
UNC Nuclear Industries  
Richland, WA 99352

Prepared for  
Division of Engineering Technology  
Office of Nuclear Regulatory Research  
U.S. Nuclear Regulatory Commission  
Washington, D.C. 20555  
NRC FIN B7568

## ABSTRACT

This document summarizes information concerning restoration of the Three Mile Island-Unit 2 Polar Crane to a fully operational condition following the loss of coolant accident experienced on March 28, 1979.

The data collected from activity reports, reactor containment entry records, and other sources were placed in a computerized information retrieval/manipulation system which permits extraction/manipulation of specific data which could be utilized in planning for recovery activities should a similar accident occur in a nuclear generating plant. The information is presented in both computer output form and a manually assembled summarization.

This report contains only the manpower requirements and radiation exposures actually incurred during recovery operations within the reactor containment and does not include support activities or costs.

CONTENTS

	<u>Page</u>
1.0 INTRODUCTION . . . . .	1
2.0 SUMMARY OF LABOR AND EXPOSURES . . . . .	3
3.0 DESCRIPTION OF COMPUTER REPORTS . . . . .	4
4.0 COMPUTER REPORTS . . . . .	4
General . . . . .	5
Administration . . . . .	17
Corporate . . . . .	19
Recovery Program . . . . .	21
Contractor (Catalytic) . . . . .	23
Quality Assurance . . . . .	29
Site Operations . . . . .	31
Health Physics . . . . .	33
Plant Operations Maintenance General . . . . .	37
Electrical Maintenance . . . . .	39
Instrument And Control . . . . .	42
Mechanical Maintenance . . . . .	44
Utilities Maintenance . . . . .	46
5.0 FIGURES AND PHOTOGRAPHS . . . . .	48

EVALUATION OF NUCLEAR FACILITY DECOMMISSIONING PROJECTS PROGRAM  
THREE MILE ISLAND UNIT 2 - POLAR CRANE RECOVERY

1.0 INTRODUCTION

On March 28, 1979 the Three Mile Island Nuclear Station, Unit-2 (TMI-2) experienced a partial loss of coolant water which exposed the upper portion of the reactor core. Resulting temperatures in the core region were in excess of 2500°F causing considerable damage to the core and possibly to other reactor components.

Contaminated reactor coolant water was released to the reactor building basement and to the auxiliary and fuel handling buildings. Release of the contaminated water resulted in gross contamination of the interior of the reactor building and the auxiliary and fuel handling buildings requiring extensive decontamination and waste handling operations to restore these buildings. Decontamination and equipment repair activities have required many labor manhours and many manrems of exposure to the workers.

Because of the vast quantity of data generated during decontamination, equipment recovery and waste handling activities, the Nuclear Regulatory Commission (NRC) requested that the data be assembled, analyzed and entered into a computer data base for historical purposes. The information also serves as a comprehensive base line for future planning, estimates and actions required should an incident of this type occur again.

The TMI-2 polar crane suffered severe damage as a result of the accident. Besides being grossly contaminated, the crane electrical components were damaged by hydrogen burns and exposure to the excessive moisture in the containment building atmosphere. Restoration of the crane is required to accomplish defueling and other cleanup activities.

This document presents, in summary form, information pertaining to the restoration of the TMI-2 polar crane to a fully operational status.

Data collected from activity reports, reactor containment entry records and other sources were placed in a computerized information retrieval/manipulation system which permits extraction/manipulation of specific information which could be used in planning for similar recovery activities should a nuclear facility be confronted with problems similar to those experienced at TMI-2.

This report contains information on radiation exposures, manpower (by craft), and time spent on repair of the damaged polar crane. It does not address support activities or costs. For purposes of planning, a labor rate could be assigned for the period during actual performance of the work to estimate costs.

A Polar Crane Recovery Task Group was established in July 1982 to direct recovery of the TMI-2 polar crane. Mechanical and electrical inspections were made during August 1982 (Entries 80, 81) and a concentrated planning and recovery effort was initiated at that time.

Prior to July 1982, considerable decontamination and characterization of the containment building had been accomplished. This report includes activities relating to the recovery of the polar crane starting with containment entry #10, May 14, 1981 "Initial Climb to Polar Crane with Safety Equipment" until full mobility and operations were restored (Entry 311) December 19, 1983. Since December 19, 1983 preventative maintenance activities have been performed but are not included as part of this report.

## 2.0 SUMMARY OF LABOR AND EXPOSURES

	<u>Persons Entering</u>	<u>Labor Manhours</u>	<u>Exposure Manrem</u>
Total Polar Crane Recovery Activity	<u>1037</u>	<u>2183.63</u>	<u>155.438</u>
AD - Administration	10	20.05	1.507
CR - Corporate	14	34.89	3.935
RP - Recovery Program	8	12.26	0.888
CN - Contractor (Catalytic)	618	1323.94	91.666
QA - Quality Assurance	13	27.13	1.774
OP - Site Operations	1	1.62	0.002
HP - Health Physics (Radiological Engineering)	178	286.95	24.523
CM - Plant Operations Maintenance General	3	4.86	0.118
EL - Electrical Maintenance	126	309.47	19.913
IC - Instrument & Control	7	15.28	1.167
MM - Mechanical Maintenance	56	140.51	9.352
UM - Utilities Maintenance	3	6.67	0.593



### 3.0 DESCRIPTION OF COMPUTER REPORTS

The computer reports included herein are (1) a general report based on containment building entries and (2) secondary reports based on department or cost centers.

The note on the general report applies to all subsequent reports.

Acronyms used in the description column of computer reports:

NDE -	Non-destructive Examination
Decon -	Decontamination
HP -	Health Physics
LS -	Lead Screw
CCTV -	Closed Circuit Television
P.C. -	Polar Crane

### 4.0 COMPUTER REPORTS

TMI-2  
POLAR CRANE RECOVERY

GENERAL

PNO. 1  
.DATE 29 JUN 84 15:04:31 RID 31 29 JUN 84 DORGE

. UNC: DDS - ACTIVITY REPORT - POLAR CRANE RECOVERY M 286 D

\* .RWP .EXP TRK . ENTRY. PERS . DEPT .EXPOS .RWP .

\* DATE .NUMBER. NUMBER . ACTIVITY .NUMBER. ENTERD. CODE . REM . HOURS. .

=====

\*

. NOTE: COLUMN HEADINGS ARE DESCRIBED BELOW:

. DATE-----YEAR-MONTH-DAY

. RWP NUMBER-----RADIATION WORK PERMIT NUMBER FOR TH1-2 CONTAINMENT BUILDING WORK.

. EXP TRK NUMBER--EXPOSURE TRACKING NUMBER--A NUMBER ASSIGNED TO SPECIFIC FUNCTIONS AT TH1-2 TO ALLOW ACCUMULATION OF EXPOSURES AND TIME SPENT IN RADIATION AREAS.

. ACTIVITY-----DESCRIPTION OF WORK OR PROGRAM.

. ENTRY NUMBER----CONTAINMENT BUILDING ENTRY NUMBER.

. PERS ENTERD-----NUMBER OF PERSONS ENTERING THE CONTAINMENT BUILDING.

. DEPT CODE-----AD--ADMINISTRATION

. CM--PLANT OPERATIONS MAINTENANCE

. CN--CONTRACTOR (CATALYTIC--INCLUDES ALL CRAFTS)

. CR--CORPORATE

. EL--PLANT OPERATIONS ELECTRICAL MAINTENANCE

. HP--HEALTH PHYSICS (RADIOLOGICAL ENGINEERING)

. IC--INSTRUMENT AND CONTROL

. MM--PLANT OPERATIONS MECHANICAL MAINTENANCE

. OP--SITE OPERATIONS

. QA--QUALITY ASSURANCE

. RP--RECOVERY PROGRAM

. UM--PLANT OPERATIONS UTILITIES MAINTENANCE

. EXPOS REM-----RADIATION EXPOSURE IN MAN REM FROM PERSONNEL DOSIMETERS

. RWP HOURS-----TIME SPENT WORKING ON A SPECIFIC TASK. INCLUDES DRESS,

. UNDRESS AND ACTUAL TIME SPENT IN THE CONTAINMENT

. DESCRIPTION- --DESCRIPTION OF TASK.

PNO. 2

.DATE 29 JUN 84 15:04:31 RID 31 29 JUN 84 DOFRCE

UNC: DDS - ACTIVITY REPORT - POLAR CRANE RECOVERY M 286 D

DATE	NUMBER	NUMBER	ACTIVITY	ENTRY	PERS	DEPT	EXPOS	RWP	DESCRIPTION
DATE	NUMBER	NUMBER	ACTIVITY	NUMBER	ENTERED	CODE	REH	HOURS	
810514	001054	D45J001	POLAR CRANE RECOVERY	10	2	AD	0.290	3.42	INITIAL CLIMB TO POLAR CRANE
810514	001054	D45J001	POLAR CRANE RECOVERY	10	1	QA	0.150	1.67	INITIAL CLIMB TO POLAR CRANE
810528	001148	C50H001	POLAR CRANE RECOVERY	11	1	HP	0.480	1.58	GENERAL AREA DOSE RATE SURVEYS
810528	001150	C50H001	POLAR CRANE RECOVERY	11	1	HP	0.271	1.08	GENERAL AREA DOSE RATE SURVEYS
810528	001151	D45J001	POLAR CRANE RECOVERY	11	2	AD	0.360	3.57	INSTALL SAFETY EQUIPMENT ON POLAR CRANE
810701	001394	D45J001	POLAR CRANE RECOVERY	11	1	QA	0.160	1.78	INSTALL SAFETY EQUIPMENT ON POLAR CRANE
810701	001394	D45J001	POLAR CRANE RECOVERY	13	2	CN	0.677	8.12	INSPECTION & SURVEY OF POLAR CRANE
810701	001394	D45J001	POLAR CRANE RECOVERY	13	1	QA	0.370	4.20	INSPECTION & SURVEY OF POLAR CRANE
811117	002449	D45J001	POLAR CRANE RECOVERY	13	1	EL	0.340	4.13	INSPECTION & SURVEY OF POLAR CRANE
811117	002449	D45J001	POLAR CRANE RECOVERY	21	3	CR	1.133	8.03	OVERHAUL INSPECTION OF POLAR CRANE
811117	002449	D45J001	POLAR CRANE RECOVERY	21	1	AD	0.211	1.40	OVERHAUL INSPECTION OF POLAR CRANE
811120	002476	C30G003	POLAR CRANE RECOVERY	21	1	CH	0.538	3.33	OVERHAUL INSPECTION OF POLAR CRANE
811120	002476	C30G003	POLAR CRANE RECOVERY	22	2	HP	0.399	5.08	POLAR CRANE OVERHAUL INSPECTION
811120	002476	C30G003	POLAR CRANE RECOVERY	22	4	CR	0.884	9.25	POLAR CRANE OVERHAUL INSPECTION
811120	002476	C30G003	POLAR CRANE RECOVERY	22	2	CN	0.393	4.42	POLAR CRANE OVERHAUL INSPECTION
820224	003129	D45J001	POLAR CRANE RECOVERY	38	1	AD	0.189	2.42	SAFETY EQUIPMENT INSPECTION
820226	003141	C30G003	POLAR CRANE RECOVERY	40	1	UM	0.292	2.00	PRE-DECON DATA ACQUISITION
820226	003141	C30G003	POLAR CRANE RECOVERY	40	6	HF	1.909	16.33	PRE-DECON DATA ACQUISITION
820226	003141	C30G003	POLAR CRANE RECOVERY	40	5	CR	1.580	13.20	PRE-DECON DATA ACQUISITION
820226	003141	C30G003	POLAR CRANE RECOVERY	40	1	CN	0.274	3.60	PRE-DECON DATA ACQUISITION
820302	003173	C30G016	POLAR CRANE RECOVERY	41	3	HP	0.741	11.75	LOW PRESSURE FLUSH OF POLAR CRANE
820304	003187	C30G017	POLAR CRANE RECOVERY	43	1	CN	0.203	3.00	LOW PRESSURE FLUSH & DATA ACQUISITION
820304	003187	C30G017	POLAR CRANE RECOVERY	43	3	HP	0.548	8.08	LOW PRESSURE FLUSH & DATA ACQUISITION
820305	003187	C30G017	POLAR CRANE RECOVERY	44	1	CR	0.099	1.50	LOW PRESSURE FLUSH & DATA ACQUISITION
820305	003187	C30G017	POLAR CRANE RECOVERY	44	3	HP	0.414	6.25	LOW PRESSURE FLUSH & DATA ACQUISITION
820308	003213	C30G017	POLAR CRANE RECOVERY	45	1	CR	0.055	2.17	LOW PRESSURE FLUSH & DATA ACQUISITION
820308	003213	C30G017	POLAR CRANE RECOVERY	45	4	HF	0.688	9.83	LOW PRESSURE FLUSH & DATA ACQUISITION
820326	003388	D45J001	POLAR CRANE RECOVERY	55	2	CN	0.356	4.00	INSPECTION/PHOTOGRAPHS/MEASUREMENTS
820326	003388	C30G017	POLAR CRANE RECOVERY	55	1	CN	0.132	1.83	POST DECON DATA ACQUISITION
820331	003436	C20H001	POLAR CRANE RECOVERY	56	1	HP	0.180	2.67	RADIATION SURVEYS/JOB COVERAGE
820331	003440	C30G003	POLAR CRANE RECOVERY	56	1	HP	0.177	2.53	POST DECON DATA ACQUISITION
820331	003441	D45J001	POLAR CRANE RECOVERY	56	2	CN	0.391	6.25	INSPECTION/PHOTOGRAPHS/MEASUREMENTS
820510	003802	D45J003	POLAR CRANE RECOVERY	61	4	CN	0.783	10.10	INSPECTION PLAN
820510	003803	D45J001	POLAR CRANE RECOVERY	61	2	CN	0.191	3.33	DATA ACQUISITION SURVEY
820513	003846	D45J003	POLAR CRANE RECOVERY	62	4	CN	0.526	7.63	INSPECTION PLAN
820513	003847	C30G001	POLAR CRANE RECOVERY	62	1	CN	0.191	1.42	H.P. SURVEYS/COVERAGE
820526	003948	C30G001	POLAR CRANE RECOVERY	63	1	CN	0.351	1.83	H.P. SURVEYS/COVERAGE
820526	003955	D45J003	POLAR CRANE RECOVERY	63	2	CN	0.352	4.83	INSPECTION PROGRAM
820712	004267	C20H001	POLAR CRANE RECOVERY	71	3	HP	0.496	4.92	RADIATION SURVEYS/JOB COVERAGE
820727	004382	C30G019	POLAR CRANE RECOVERY	76	2	CN	0.265	1.75	INSTALL ALUMINUM PICKS FOR SPIDER
820812	004476	D45J002	POLAR CRANE RECOVERY	80	3	CN	0.417	6.50	MECHANICAL INSPECTION
820813	004476	D45J002	POLAR CRANE RECOVERY	81	1	CN	0.236	3.17	MECHANICAL INSPECTION
820813	004479	D45J003	POLAR CRANE RECOVERY	81	1	CN	0.273	2.33	ELECTRICAL INSPECTION
820813	004479	D45J003	POLAR CRANE RECOVERY	81	1	CR	0.189	2.58	ELECTRICAL INSPECTION
820816	004504	D45J001	POLAR CRANE RECOVERY	82	4	CN	0.519	7.08	FULL FLOOR PLUGS-347' ELEVATION
820816	004505	D45J001	POLAR CRANE RECOVERY	82	4	CN	0.769	7.33	MOVE BEAMS-347' ELEVATION
820818	004505	D45J001	POLAR CRANE RECOVERY	83	12	CN	2.619	19.42	MOVE BEAMS-347' ELEVATION
820820	004536	D45J001	POLAR CRANE RECOVERY	84	8	CN	1.893	10.75	MOVE BEAMS-347' ELEVATION

PNO. 3

DATE 29 JUN 84 15:04:31 RID 31 29 JUN 84 DOERGE

UNC: DDS - ACTIVITY REPORT - POLAR CRANE RECOVERY M 286 D

#	DATE	RWP	EXP	TRK	NUMBER	NUMBER	ACTIVITY	NUMBER	ENTERD.	CODE	REM	HOURS	DESCRIPTION
820820	004536	D45J001	POLAR	CRANE	RECOVERY	84	1	HF	0.079	0.67			MOVE BEAMS-347 ELEVATION
820820	004540	D45J001	POLAR	CRANE	RECOVERY	84	4	CN	1.062	7.25			INSTALL SPIDER LANDING PLATFORM
820820	004548	C20H001	POLAR	CRANE	RECOVERY	84	2	HF	0.112	1.43			RADIATION SURVEYS/JOB COVERAGE
820823	004550	C90K001	POLAR	CRANE	RECOVERY	85	1	HF	0.176	1.43			INSTALL POWER BUGGY/REMOVE PENDANT
820823	004550	C90K001	POLAR	CRANE	RECOVERY	85	4	CN	0.677	6.52			INSTALL POWER BUGGY/REMOVE PENDANT
820823	004551	D45J002	POLAR	CRANE	RECOVERY	85	3	CH	4.331	3.75			MECHANICAL INSPECTION
820823	004552	D45J001	POLAR	CRANE	RECOVERY	85	2	CN	0.303	1.93			INSTALL SPIDER LANDING PLATFORM
820825	004571	D45J003	POLAR	CRANE	RECOVERY	86	2	CN	0.315	3.92			ELECTRICAL INSPECTION
820825	004571	D45J003	POLAR	CRANE	RECOVERY	86	1	CR	0.149	1.83			ELECTRICAL INSPECTION
820825	004572	D45J002	POLAR	CRANE	RECOVERY	86	3	CH	0.425	4.85			MOVE TROLLEY
820825	004587	C20H001	POLAR	CRANE	RECOVERY	86	1	HF	0.080	1.00			RADIATION SURVEYS/JOB COVERAGE
820827	004585	D45J003	POLAR	CRANE	RECOVERY	87	3	CH	0.359	5.50			ELECTRICAL INSPECTION
820827	004586	D45J002	POLAR	CRANE	RECOVERY	87	4	CN	0.203	3.25			MOVE TROLLEY
820827	004586	D45J002	POLAR	CRANE	RECOVERY	87	2	HF	0.484	6.67			MOVE TROLLEY
820827	004791	D45J001	POLAR	CRANE	RECOVERY	87	1	HF	0.097	1.50			POLAR CRANE INSPECTION
820827	004591	D45J001	POLAR	CRANE	RECOVERY	87	1	AF	0.102	1.50			POLAR CRANE INSPECTION
820830	004600	D45J003	POLAR	CRANE	RECOVERY	88	4	EL	0.667	10.42			ELECTRICAL INSPECTION
820830	004601	C20H001	POLAR	CRANE	RECOVERY	88	2	HF	0.043	1.67			RADIATION SURVEYS/JOB COVERAGE
820830	004602	D45J001	POLAR	CRANE	RECOVERY	88	7	HO	0.314	4.83			GEAR CASE OIL SAMPLES
820830	004602	D45J001	POLAR	CRANE	RECOVERY	88	2	CN	0.287	4.50			GEAR CASE OIL SAMPLES
820901	004620	D45J001	POLAR	CRANE	RECOVERY	89	4	CH	0.331	5.08			EQUIPMENT PROTECTION-POLAR CRANE
820903	004600	D45J003	POLAR	CRANE	RECOVERY	90	4	EL	0.763	8.25			ELECTRICAL INSPECTION
820903	004617	D45J002	POLAR	CRANE	RECOVERY	90	1	CM	0.000	1.17			GEAR CASE OIL SAMPLES
820903	004635	D45J001	POLAR	CRANE	RECOVERY	90	2	CN	0.005	1.58			SURVEY PENDANT CABLE
820908	004617	D45J002	POLAR	CRANE	RECOVERY	91	1	CM	0.003	1.67			GEAR CASE OIL SAMPLES
820908	004617	D45J002	POLAR	CRANE	RECOVERY	91	1	HF	0.000	0.67			GEAR CASE OIL SAMPLES
820908	004656	D45J001	POLAR	CRANE	RECOVERY	91	4	CN	0.564	8.78			EQUIPMENT PROTECTION-POLAR CRANE
820910	004656	D45J001	POLAR	CRANE	RECOVERY	92	8	CR	1.083	14.40			EQUIPMENT PROTECTION-POLAR CRANE
820915	004708	D45J001	POLAR	CRANE	RECOVERY	93	2	HF	0.305	4.42			EQUIPMENT PROTECTION-POLAR CRANE
820915	004708	D45J001	POLAR	CRANE	RECOVERY	93	2	CN	0.281	4.33			EQUIPMENT PROTECTION-POLAR CRANE
820915	004710	D45J003	POLAR	CRANE	RECOVERY	93	3	CN	0.348	6.50			CABLE SAMPLE WALKDOWN
820915	004710	D45J003	POLAR	CRANE	RECOVERY	93	1	HF	0.146	2.42			CABLE SAMPLE WALKDOWN
820917	004718	D45J002	POLAR	CRANE	RECOVERY	94	2	CN	0.284	3.88			INSTALL SAFETY LINES
820917	004723	D45J002	POLAR	CRANE	RECOVERY	94	3	CN	0.386	6.00			MECHANICAL INSPECTION
820920	004710	D45J003	POLAR	CRANE	RECOVERY	95	3	CN	0.906	4.32			CABLE SAMPLE WALKDOWN
820920	004710	D45J003	POLAR	CRANE	RECOVERY	95	1	HF	0.515	1.90			CABLE SAMPLE WALKDOWN
820920	004732	D45J003	POLAR	CRANE	RECOVERY	95	4	CN	0.311	3.50			INSTALL CAMERA
820920	004732	D45J003	POLAR	CRANE	RECOVERY	95	2	IC	0.345	4.00			INSTALL CAMERA
820922	004732	D45J003	POLAR	CRANE	RECOVERY	96	2	IC	0.271	3.94			INSTALL CAMERA
820929	004806	D45J001	POLAR	CRANE	RECOVERY	99	1	CR	0.109	1.50			DECON OPERATIONS INSPECTION-POLAR CRANE
820929	004806	D45J001	POLAR	CRANE	RECOVERY	99	1	RF	0.149	1.50			DECON OPERATIONS INSPECTION-POLAR CRANE
821001	004825	C20H001	POLAR	CRANE	RECOVERY	100	1	HF	0.275	2.08			RADIATION SURVEYS/JOB COVERAGE
821004	004838	C20H001	POLAR	CRANE	RECOVERY	101	1	HF	0.000	0.83			RADIATION SURVEYS/JOB COVERAGE
821006	004859	C20H001	POLAR	CRANE	RECOVERY	102	1	HF	0.076	0.77			RADIATION SURVEYS/JOB COVERAGE
821008	004867	C20H001	POLAR	CRANE	RECOVERY	103	1	HF	0.101	1.50			RADIATION SURVEYS/JOB COVERAGE
821008	004868	D45J003	POLAR	CRANE	RECOVERY	103	2	CN	0.323	4.32			TEMPORARY POWER WALKDOWN
821011	004881	C20H001	POLAR	CRANE	RECOVERY	104	1	HF	0.029	0.48			RADIATION SURVEYS/JOB COVERAGE
821011	004882	D45J002	POLAR	CRANE	RECOVERY	104	5	CR	0.843	10.25			OPERATE SPIDER/ASSEMBLE HAND RAIL
831013	003897	D45J001	POLAR	CRANE	RECOVERY	105	1	IC	0.411	3.00			REPLACE CCTV CAMERA

PHO. 4

.DATE 29 JUN 84 15:04:31 RID 31 19 JUN 84 DOERGE

.UNC: DDS - ACTIVITY REPORT - POLAR CRANE RECOVERY H 286

.RMP .EXP TRK .

.ENTRY, PFRS, DEFT, EXPOS, FWP

* DATE	.NUMBER	.NUMBER	.ACTIVITY	.NUMBER	.ENTERED	.CODE	.REH	.HOURS	.DESCRIPTION
821013	004882	D45J002	POLAR CRANE RECOVERY	105	4	CN	0.452	10.67	OPERATE SPIDER/ASSEMBLE HAND RAIL
821013	004898	D45J001	POLAR CRANE RECOVERY	105	2	CN	0.309	5.62	WALKDOWN POLAR CRANE TROLLEY
821014	004882	D45J002	POLAR CRANE RECOVERY	106	2	CN	0.243	4.18	OPERATE SPIDER/ASSEMBLE HAND RAIL
821014	004905	C20H001	POLAR CRANE RECOVERY	105	1	HP	0.045	0.65	RADIATION SURVEYS/JOB COVERAGE
821018	004930	C20H001	POLAR CRANE RECOVERY	108	4	CN	1.595	9.28	INSTALL 1500/2000 LB LIFT RIG
821018	004932	C20H001	POLAR CRANE RECOVERY	108	4	CN	0.784	9.27	MODIFY LIFT RIG
821018	004934	C20H001	POLAR CRANE RECOVERY	108	1	HP	0.085	0.75	RADIATION SURVEYS/JOB COVERAGE
821020	004944	C20H001	POLAR CRANE RECOVERY	109	2	CN	0.339	3.37	MODIFY LIFT RIG
821021	004949	C20H001	POLAR CRANE RECOVERY	110	1	HP	0.094	2.08	RADIATION SURVEYS/JOB COVERAGE
821027	004992	D41C001	POLAR CRANE RECOVERY	113	2	HP	0.308	4.50	RADIOLOGICAL CHARACTERIZATION OF P.C.
821028	004997	C20H001	POLAR CRANE RECOVERY	114	1	HP	0.018	0.72	RADIATION SURVEYS/JOB COVERAGE
821029	004997	C20H001	POLAR CRANE RECOVERY	115	1	HP	0.028	0.85	RADIATION SURVEYS/JOB COVERAGE
821029	005000	D45J001	POLAR CRANE RECOVERY	115	2	CN	0.238	4.42	WIRE ROPE SAMPLE
821029	005001	D45J003	POLAR CRANE RECOVERY	115	2	CN	0.185	2.83	TEMPORARY LIGHTING-POLAR CRANE
821101	005010	C20H001	POLAR CRANE RECOVERY	116	1	HP	0.049	0.25	RADIATION SURVEYS/JOB COVERAGE
821101	005012	D45J003	POLAR CRANE RECOVERY	116	7	CN	0.716	10.47	TEMPORARY POWER HOOKUP
821101	005013	D45J002	POLAR CRANE RECOVERY	116	5	CN	0.604	12.63	COVER & GUARD REMOVAL
821101	005013	D45J002	POLAR CRANE RECOVERY	116	2	HP	0.251	5.72	DISCONNECT COUPLINGS
821103	005012	D45J003	POLAR CRANE RECOVERY	117	4	CN	0.595	6.42	TEMPORARY POWER HOOKUP
821103	005013	D45J002	POLAR CRANE RECOVERY	117	3	CN	0.423	7.20	COVER & GUARD REMOVAL
821103	005013	D45J002	POLAR CRANE RECOVERY	117	1	HP	0.183	2.28	DISCONNECT COUPLINGS
821103	005034	D45J002	POLAR CRANE RECOVERY	117	2	CN	0.308	5.00	LUBRICATE CRANE
821105	005047	D45J002	POLAR CRANE RECOVERY	118	4	CN	0.550	10.77	LUBRICATE CRANE
821105	005048	D45J002	POLAR CRANE RECOVERY	118	2	CN	0.216	3.67	DISENGAGE CLUTCHES
821105	005049	D45J003	POLAR CRANE RECOVERY	118	2	EL	0.350	4.93	BRIDGE CONTROL FUNCTIONAL TEST
821105	005049	D45J003	POLAR CRANE RECOVERY	118	1	CN	0.165	2.78	BRIDGE CONTROL FUNCTIONAL TEST
821108	005059	C20H001	POLAR CRANE RECOVERY	119	1	HP	0.125	1.05	RADIATION SURVEYS/JOB COVERAGE
821108	005060	D45J001	POLAR CRANE RECOVERY	119	2	CN	0.143	2.12	LOCATE LOAD RIGGING
821108	005061	D45J001	POLAR CRANE RECOVERY	119	2	CN	0.279	4.17	INSPECTION OF BRIDGE & TROLLEY
821108	005062	D45J003	POLAR CRANE RECOVERY	119	2	EL	0.223	3.43	TROLLEY FUNCTIONAL TEST
821110	005061	D45J001	POLAR CRANE RECOVERY	120	2	CN	0.373	5.60	INSPECTION OF BRIDGE & TROLLEY
821110	005063	D45J002	POLAR CRANE RECOVERY	120	4	CN	0.797	10.08	INSTALL SERVICE AIR TO POLAR CRANE
821110	005079	C20H001	POLAR CRANE RECOVERY	120	2	HP	0.304	3.05	RADIATION SURVEYS/JOB COVERAGE
821110	005080	D45J003	POLAR CRANE RECOVERY	120	2	EL	0.366	6.27	MAIN HOIST FUNCTIONAL TEST
821110	005080	D45J003	POLAR CRANE RECOVERY	120	1	CN	0.210	3.18	MAIN HOIST FUNCTIONAL TEST
821112	005063	D45J002	POLAR CRANE RECOVERY	121	3	CN	0.570	6.82	INSTALL SERVICE AIR TO POLAR CRANE
821112	005089	C20H001	POLAR CRANE RECOVERY	121	4	HP	1.179	12.35	RADIATION SURVEYS/JOB COVERAGE
821112	005094	D45J001	POLAR CRANE RECOVERY	121	4	CN	0.813	11.68	JIB INSTALLATION
821113	005104	D45J001	POLAR CRANE RECOVERY	122	2	CN	0.315	4.92	FENDANT/FESTOON INSTALLATION
821113	005105	D45J003	POLAR CRANE RECOVERY	122	2	EL	0.301	4.50	BRIDGE CONTROL FUNCTIONAL TEST
821115	005105	D45J003	POLAR CRANE RECOVERY	122	1	CN	0.153	2.08	BRIDGE CONTROL FUNCTIONAL TEST
821115	005106	D45J002	POLAR CRANE RECOVERY	122	5	CN	0.650	9.91	MAIN HOIST BRAKE REPLACEMENT
821115	005107	C20H001	POLAR CRANE RECOVERY	122	1	HP	0.176	2.25	RADIATION SURVEYS/JOB COVERAGE
821117	005108	D45J002	POLAR CRANE RECOVERY	122	6	CN	0.718	13.83	TEMPORARY SERVICE AIR TO POLAR CRANE
821117	005104	D45J001	POLAR CRANE RECOVERY	123	4	CN	0.481	8.27	FENDANT/FESTOON INSTALLATION
821117	005106	D45J002	POLAR CRANE RECOVERY	123	3	HP	0.489	8.28	MAIN HOIST BRAKE REPLACEMENT
821117	005106	D45J002	POLAR CRANE RECOVERY	123	1	CN	0.144	2.57	MAIN HOIST BRAKE REPLACEMENT
821117	005125	D45J002	POLAR CRANE RECOVERY	123	4	CN	0.441	6.25	LUBRICATE CRANE
821117	005126	D45J002	POLAR CRANE RECOVERY	123	4	CN	0.523	9.62	LUBRICATE CRANE

PNO. 5

.DATE 29 JUN 84 15:04:31 RID 31 29 JUN 84 DFERGE

UNC: DDS - ACTIVITY REPORT - POLAR CRANE RECOVERY R 266 D

#	DATE	.RWP NUMBER	.EXP TRK NUMBER	ACTIVITY	.NUMBER	.ENTR. ENTERD.	.DEPT CODE	.REH REM	.HOURS HOURS	DESCRIPTION
821118	005106	D45J002	POLAR CRANE RECOVERY	124	3	MM	0.489	9.78	MAIN HOIST BRAKE REPLACEMENT	
821118	005126	D45J002	POLAR CRANE RECOVERY	124	4	CR	0.557	11.88	LUBRICATE CRANE	
821118	005130	C20H001	POLAR CRANE RECOVERY	124	2	HP	0.270	4.73	RADIATION SURVEYS/JOB COVERAGE	
821118	005133	D45J003	POLAR CRANE RECOVERY	124	2	EL	0.520	7.00	RESISTOR BANK TESTING	
821119	005106	D45J002	POLAR CRANE RECOVERY	125	3	MM	0.418	8.45	MAIN HOIST BRAKE REPLACEMENT	
821119	005126	D45J002	POLAR CRANE RECOVERY	125	4	CR	0.598	11.62	LUBRICATE CRANE	
821119	005130	C20H001	POLAR CRANE RECOVERY	125	1	HP	0.175	1.45	RADIATION SURVEYS/JOB COVERAGE	
821119	005133	D45J003	POLAR CRANE RECOVERY	125	2	EL	0.438	5.10	RESISTOR BANK TESTING	
821122	005155	D45J002	POLAR CRANE RECOVERY	126	3	MM	0.350	8.02	MAIN HOIST BRAKE REPLACEMENT	
821122	005155	D45J002	POLAR CRANE RECOVERY	126	1	CN	0.117	2.40	MAIN HOIST BRAKE REPLACEMENT	
821122	005156	D45J003	POLAR CRANE RECOVERY	126	2	EL	0.172	2.38	RESISTOR BANK TESTING	
821122	005157	D20A001	POLAR CRANE RECOVERY	126	1	HP	0.267	2.40	RADIATION SURVEYS AND JOB COVERAGE	
821124	005155	D45J002	POLAR CRANE RECOVERY	127	5	CN	0.621	9.93	MAIN HOIST BRAKE REPLACEMENT	
821124	005180	D45J002	POLAR CRANE RECOVERY	127	1	CN	0.127	2.42	INSPECTION OF POLAR CRANE	
821124	005180	D45J002	POLAR CRANE RECOVERY	127	1	AD	0.142	2.78	INSPECTION OF POLAR CRANE	
821124	005181	D45J002	POLAR CRANE RECOVERY	127	2	CN	0.103	2.67	INSPECTION OF POLAR CRANE	
821124	005182	D45J003	POLAR CRANE RECOVERY	127	1	CN	0.134	2.40	MAIN HOIST BRAKE REPLACEMENT	
821124	005182	D45J003	POLAR CRANE RECOVERY	127	2	EL	0.307	4.53	BRIDGE DRIVE TESTING	
821124	005184	C20H001	POLAR CRANE RECOVERY	127	1	HP	0.150	0.83	RADIATION SURVEYS/JOB COVERAGE	
821124	005186	C50H001	POLAR CRANE RECOVERY	127	1	HP	0.015	2.38	RADIATION SURVEYS/JOB COVERAGE	
821127	005182	D45J003	POLAR CRANE RECOVERY	128	2	EL	0.306	5.28	BRIDGE DRIVE TESTING	
821129	006194	C20H001	POLAR CRANE RECOVERY	128	1	HP	0.108	2.27	RADIATION SURVEYS/JOB COVERAGE	
821201	005182	D45J003	POLAR CRANE RECOVERY	129	1	CN	0.198	2.52	STRUCTURAL INSPECTION	
821201	005182	D45J003	POLAR CRANE RECOVERY	129	1	EL	0.200	2.48	BRIDGE DRIVE TESTING	
821201	005197	D45J002	POLAR CRANE RECOVERY	129	7	CN	1.155	19.28	LUBRICATE CRANE	
821201	005216	C20H001	POLAR CRANE RECOVERY	129	1	HP	0.105	1.15	RADIATION SURVEYS/JOB COVERAGE	
821201	005218	D45J002	POLAR CRANE RECOVERY	129	1	QA	0.141	2.37	STRUCTURAL INSPECTION	
821201	005218	D45J002	POLAR CRANE RECOVERY	129	1	CN	0.137	2.42	STRUCTURAL INSPECTION	
821202	005197	D45J002	POLAR CRANE RECOVERY	130	4	CN	0.476	10.60	LUBRICATE CRANE	
821202	005224	D45J003	POLAR CRANE RECOVERY	130	2	EL	0.305	4.98	SLOW SPEED MOTORS TESTING	
821202	005226	D45J001	POLAR CRANE RECOVERY	130	3	CN	0.462	7.63	EXAMINE TROLLEY GEAR CASE	
821203	005197	D45J002	POLAR CRANE RECOVERY	131	4	CN	0.427	8.82	LUBRICATE CRANE	
821203	005224	D45J003	POLAR CRANE RECOVERY	131	1	CN	0.149	2.40	SLOW SPEED MOTORS TESTING	
821203	005224	D45J003	POLAR CRANE RECOVERY	131	1	EL	0.142	2.23	SLOW SPEED MOTORS TESTING	
821203	005233	D45J002	POLAR CRANE RECOVERY	131	2	MM	0.279	4.45	LUBRICATE WIRE ROPE	
821203	005233	D45J002	POLAR CRANE RECOVERY	131	1	CN	0.129	2.13	LUBRICATE WIRE ROPE	
821206	005224	D45J003	POLAR CRANE RECOVERY	132	2	EL	0.294	5.25	SLOW SPEED MOTORS TESTING	
821206	005248	C20H001	POLAR CRANE RECOVERY	132	1	HP	0.060	0.82	RADIATION SURVEYS/JOB COVERAGE	
821206	005250	D45J003	POLAR CRANE RECOVERY	132	4	CN	0.585	10.58	TROLLEY POWER PREPARATION	
821208	005224	D45J003	POLAR CRANE RECOVERY	133	1	CN	0.114	2.35	SLOW SPEED MOTORS TESTING	
821208	005224	D45J003	POLAR CRANE RECOVERY	133	1	EL	0.120	2.27	SLOW SPEED MOTORS TESTING	
821208	005250	D45J003	POLAR CRANE RECOVERY	133	4	CN	0.438	9.90	TROLLEY POWER PREPARATION	
821208	005270	D45J002	POLAR CRANE RECOVERY	133	4	CN	0.452	10.97	LUBRICATE BRIDGE&TROLLEY	
821208	005273	D45J001	POLAR CRANE RECOVERY	133	2	MM	0.241	4.80	CLEAN BRAKE WHEELS	
821209	005270	D45J002	POLAR CRANE RECOVERY	134	4	CN	0.467	9.57	LUBRICATE BRIDGE&TROLLEY	
821209	005285	D45J003	POLAR CRANE RECOVERY	134	2	EL	0.440	6.38	CRANE MOTOR TESTING	
821209	005286	D45J003	POLAR CRANE RECOVERY	134	4	CN	0.518	10.12	REMOVE COLLECTOR SHOES	
821209	005287	C20H001	POLAR CRANE RECOVERY	134	1	HP	0.225	2.12	RADIATION SURVEYS/JOB COVERAGE	
821209	005287	C20H001	POLAR CRANE RECOVERY	134	1	CN	0.185	1.77	RADIATION SURVEYS/JOB COVERAGE	

PNO. 6

.DATE 29 JUN 84 15:04:31 RID 31 29 JUN 84 DOERGE

.UNC: DGS - ACTIVITY REPORT - POLAR CRANE RECOVERY M 286 D

#	DATE	RWP NUMBER	EXP TRK NUMBER	ACTIVITY	ENTRY NUMBER	PERS ENTERED	DEPT CODE	EXPOS REM	RWP HOURS	DESCRIPTION
821210	005273	D45J001	POLAR CRANE RECOVERY	135	1	MM	0.110	2.20	CLEAN BRAKE WHEELS	
821210	005285	D45J003	POLAR CRANE RECOVERY	135	1	CN	0.207	3.45	CRANE MOTOR TESTING	
821210	005285	D45J003	POLAR CRANE RECOVERY	135	1	EL	0.203	3.48	CRANE MOTOR TESTING	
821210	005286	D45J003	POLAR CRANE RECOVERY	135	3	CN	0.350	6.60	REMOVE COLLECTOR SHOES	
821210	005295	C20H001	POLAR CRANE RECOVERY	135	2	HP	0.258	3.38	RADIATION SURVEYS/JOB COVERAGE	
821213	005302	C20H001	POLAR CRANE RECOVERY	136	2	HP	0.160	3.03	RADIATION SURVEYS/JOB COVERAGE	
821213	005307	D45J003	POLAR CRANE RECOVERY	136	2	EL	0.757	7.57	SLOW SPEED MOTORS TESTING	
821214	005302	C20H001	POLAR CRANE RECOVERY	137	1	HP	0.083	1.02	RADIATION SURVEYS/JOB COVERAGE	
821214	005307	D45J003	POLAR CRANE RECOVERY	137	1	CN	0.197	3.58	SLOW SPEED MOTORS TESTING	
821214	005307	D45J003	POLAR CRANE RECOVERY	137	1	EL	0.230	3.50	SLOW SPEED MOTORS TESTING	
821216	005302	C20H001	POLAR CRANE RECOVERY	138	1	HP	0.056	0.97	RADIATION SURVEYS/JOB COVERAGE	
821216	005340	D45J003	POLAR CRANE RECOVERY	138	12	CN	1.955	23.85	TROLLEY POWER CONTROL BYPASS	
821216	005340	D45J003	POLAR CRANE RECOVERY	138	1	HP	0.000	0.02	TROLLEY POWER CONTROL BYPASS	
821217	005340	D45J003	POLAR CRANE RECOVERY	139	7	CN	0.703	18.70	TROLLEY POWER CONTROL BYPASS	
821217	005351	C20H001	POLAR CRANE RECOVERY	139	2	HP	0.383	2.90	RADIATION SURVEYS/JOB COVERAGE	
821217	005353	D45J003	POLAR CRANE RECOVERY	139	3	EL	0.610	8.45	REPLACE RESISTOR BANK	
821220	005363	D45J002	POLAR CRANE RECOVERY	140	1	QA	0.119	2.27	STRUCTURAL INSPECTION	
821220	005363	D45J002	POLAR CRANE RECOVERY	140	1	CN	0.115	2.02	STRUCTURAL INSPECTION	
821220	005363	D45J002	POLAR CRANE RECOVERY	140	1	CR	0.115	2.12	STRUCTURAL INSPECTION	
821220	005364	D45J003	POLAR CRANE RECOVERY	140	1	CN	0.178	3.58	SLOW SPEED MOTORS TESTING	
821220	005364	D45J003	POLAR CRANE RECOVERY	140	1	EL	0.189	3.43	SLOW SPEED MOTORS TESTING	
821221	005364	D45J003	POLAR CRANE RECOVERY	141	3	CR	0.392	7.43	SLOW SPEED MOTORS TESTING	
821221	005364	D45J003	POLAR CRANE RECOVERY	141	1	EL	0.134	2.72	SLOW SPEED MOTORS TESTING	
821221	005382	D45J003	POLAR CRANE RECOVERY	141	4	EL	0.832	10.00	SLOW SPEED MOTORS TESTING	
821221	005440	C20H004	POLAR CRANE RECOVERY	141	2	CN	0.224	2.77	INSTALL TROLLEY SPIDER EQUIPMENT	
821222	005364	D45J003	POLAR CRANE RECOVERY	142	2	CN	0.281	5.93	SLOW SPEED MOTORS TESTING	
821222	005364	D45J003	POLAR CRANE RECOVERY	142	1	EL	0.154	2.88	SLOW SPEED MOTORS TESTING	
821222	005386	C20H001	POLAR CRANE RECOVERY	142	1	HP	0.058	0.77	RADIATION SURVEYS/JOB COVERAGE	
821228	005419	D45J003	POLAR CRANE RECOVERY	144	1	CN	0.140	2.47	MAIN HOIST RUN TESTING	
821228	005419	D45J003	POLAR CRANE RECOVERY	144	1	EL	0.121	2.58	MAIN HOIST RUN TESTING	
821228	005442	C70H001	POLAR CRANE RECOVERY	144	1	HP	0.161	1.08	HP SURVEYS/JOB COVERAGE	
821229	005428	D45J003	POLAR CRANE RECOVERY	145	2	EL	0.293	5.00	SLOW SPEED MOTORS TESTING	
821229	005429	C70H001	POLAR CRANE RECOVERY	145	1	HP	0.039	0.57	HP SURVEYS/JOB COVERAGE	
821230	005438	D45J001	POLAR CRANE RECOVERY	146	1	CN	0.089	1.23	RECONTAMINATION TEST	
821230	005438	D45J001	POLAR CRANE RECOVERY	146	1	RP	0.079	1.27	RECONTAMINATION TEST	
821230	005440	C20H003	POLAR CRANE RECOVERY	146	2	CR	0.264	2.93	UNICOM RADIO SYSTEM FOR POLAR CRANE	
821230	005441	C70H001	POLAR CRANE RECOVERY	146	1	HP	0.129	1.82	HP SURVEYS/JOB COVERAGE	
821230	005442	D45J003	POLAR CRANE RECOVERY	146	2	EL	0.224	4.08	MAIN HOIST SLOW SPEED MOTOR TESTING	
830104	005455	D45J003	POLAR CRANE RECOVERY	147	1	CN	0.125	2.67	DRIVE TEST	
830104	005455	D45J003	POLAR CRANE RECOVERY	147	1	EL	0.162	2.65	DRIVE TEST	
830104	005456	D45J001	POLAR CRANE RECOVERY	147	1	CN	0.102	1.23	RETRIEVE RECONTAMINATION TEST RESULTS	
830104	005461	C70H001	POLAR CRANE RECOVERY	147	1	HP	0.240	1.95	HP SURVEYS/JOB COVERAGE	
830105	005455	D45J003	POLAR CRANE RECOVERY	148	2	EL	0.251	4.72	DRIVE TEST	
830105	005477	D45J001	POLAR CRANE RECOVERY	148	3	MM	0.459	7.37	RECONNECT COUPLINGS ON POLAR CRANE	
830105	005479	C70H001	POLAR CRANE RECOVERY	148	1	HP	0.106	1.07	HP SURVEYS/JOB COVERAGE	
830105	005481	D45J001	POLAR CRANE RECOVERY	148	4	CN	0.413	8.65	INSTALL SAFETY LINES ON POLAR CRANE	
830106	005455	D45J003	POLAR CRANE RECOVERY	149	1	CN	0.127	2.90	DRIVE TEST	
830106	005455	D45J003	POLAR CRANE RECOVERY	149	1	EL	0.133	2.83	DRIVE TEST	
830106	005491	C70H001	POLAR CRANE RECOVERY	149	1	HP	0.212	1.00	HP SURVEYS/JOB COVERAGE	



PNO. 7

.DATE 29 JUN 84 15:04:31 RID 31 29 JUN 84 DOERGE

.UNC: DDS - ACTIVITY REPORT - POLAR CRANE RECOVERY M 286 II

* DATE	.RWP	.EXP	TRK	.NUMBER	.NUMBER	ACTIVITY	.NUMBER	ENTERED	CODE	.REM	.RWP	.HOURS	DESCRIPTION
830107	005455	D45J003		POLAR CRANE RECOVERY	150	2	EL	0.238	4.47				DRIVE TEST
830107	005490	D45J001		POLAR CRANE RECOVERY	150	2	HN	0.282	4.77				RECONNECT COUPLINGS ON POLAR CRANE
830107	005490	D45J001		POLAR CRANE RECOVERY	150	1	EL	0.131	2.42				RECONNECT COUPLINGS ON POLAR CRANE
830107	005490	D45J001		POLAR CRANE RECOVERY	150	1	CH	0.140	2.53				RECONNECT COUPLINGS ON POLAR CRANE
830107	005502	C70H001		POLAR CRANE RECOVERY	150	1	HP	0.161	1.83				HP SURVEYS/JOB COVERAGE
830111	005508	D45J001		POLAR CRANE RECOVERY	152	2	CN	0.231	7.07				SURVEY RUNWAY RAIL
830111	005513	D45J001		POLAR CRANE RECOVERY	152	2	CN	0.287	6.25				SURVEY RUNWAY RAIL
830111	005514	D45J001		POLAR CRANE RECOVERY	152	1	HP	0.170	3.60				SURVEY RUNWAY RAIL
830111	005533	C20H004		POLAR CRANE RECOVERY	152	6	CN	0.663	11.40				INSTALL TROLLEY SPIDER EQUIPMENT
830112	005508	D45J001		POLAR CRANE RECOVERY	153	2	CN	0.238	7.15				SURVEY RUNWAY RAIL
830112	005509	D45J003		POLAR CRANE RECOVERY	153	2	EL	0.294	4.72				DRIVE TEST
830112	005514	D45J001		POLAR CRANE RECOVERY	153	1	HP	0.152	3.67				SURVEY RUNWAY RAIL
830212	005542	D45J001		POLAR CRANE RECOVERY	153	2	HM	0.410	4.65				CLEAN BRAKE WHEELS
830112	005551	D45J001		POLAR CRANE RECOVERY	153	2	CN	0.228	6.17				MECHANICAL INSPECTION OF RUNWAY
830112	005555	C70H001		POLAR CRANE RECOVERY	153	2	HP	0.079	0.98				HP SURVEYS/JOB COVERAGE
830113	005556	D45J001		POLAR CRANE RECOVERY	154	1	HP	0.177	3.75				SURVEY RUNWAY RAIL
830113	005557	D45J001		POLAR CRANE RECOVERY	154	2	CN	0.286	7.75				SURVEY RUNWAY RAIL
830113	005558	D45J001		POLAR CRANE RECOVERY	154	2	CH	0.251	2.78				SURVEY RUNWAY RAIL
830114	005569	C20H004		POLAR CRANE RECOVERY	155	11	CN	1.459	24.12				INSTALL TROLLEY SPIDER EQUIPMENT
830114	005571	D45J001		POLAR CRANE RECOVERY	155	2	HM	0.432	5.30				RECONNECT COUPLINGS ON POLAR CRANE
830117	005577	D45J002		POLAR CRANE RECOVERY	156	6	CH	0.852	14.90				REMOVE WIRE ROPE LUBRICANT
830117	005578	C70H001		POLAR CRANE RECOVERY	156	1	HP	0.168	2.80				HP SURVEYS/JOB COVERAGE
830118	005598	C70H001		POLAR CRANE RECOVERY	157	1	HP	0.122	1.27				HP SURVEYS/JOB COVERAGE
830118	005599	D45J001		POLAR CRANE RECOVERY	157	2	HM	0.601	5.67				RECONNECT COUPLINGS ON POLAR CRANE
830118	005600	C20H004		POLAR CRANE RECOVERY	157	2	CN	0.303	5.80				INSTALL TROLLEY SPIDER EQUIPMENT
830118	005602	D45J003		POLAR CRANE RECOVERY	157	2	EL	0.415	5.55				DRIVE TEST
830119	005602	D45J003		POLAR CRANE RECOVERY	158	1	EL	0.187	4.32				DRIVE TEST
830119	005602	D45J003		POLAR CRANE RECOVERY	158	1	CH	0.220	4.43				DRIVE TEST
830119	005612	D45J001		POLAR CRANE RECOVERY	158	2	CN	0.447	7.73				NRC INSPECTION OF POLAR CRANE
830119	005613	D45J001		POLAR CRANE RECOVERY	158	2	HM	0.608	7.35				CLEAN BRAKE WHEELS
830119	005613	D45J001		POLAR CRANE RECOVERY	158	1	CN	0.207	3.97				CLEAN BRAKE WHEELS
830119	005614	C70H001		POLAR CRANE RECOVERY	158	2	HP	0.160	2.92				HP SURVEYS/JOB COVERAGE
830119	005615	D45J002		POLAR CRANE RECOVERY	158	1	CN	0.127	2.22				REMOVE LOAD HOOK FROM POLAR CRANE
830119	005617	C20H004		POLAR CRANE RECOVERY	158	2	CN	0.328	5.08				INSTALL TROLLEY SPIDER EQUIPMENT
830121	005629	D45J002		POLAR CRANE RECOVERY	160	1	HM	0.204	2.37				DECONTAMINATE MAIN HOOK
830121	005629	D45J002		POLAR CRANE RECOVERY	160	1	IC	0.000	0.05				DECONTAMINATE MAIN HOOK
830121	005629	D45J002		POLAR CRANE RECOVERY	160	1	CN	0.207	2.37				DECONTAMINATE MAIN HOOK
830121	005630	C70H001		POLAR CRANE RECOVERY	160	1	HP	0.194	2.47				HP SURVEYS/JOB COVERAGE
830124	005635	C70H001		POLAR CRANE RECOVERY	161	1	HP	0.155	1.47				HP SURVEYS/JOB COVERAGE
830124	005639	C20H004		POLAR CRANE RECOVERY	161	2	CN	0.479	7.40				INSTALL TROLLEY SPIDER EQUIPMENT
830124	005640	D45J001		POLAR CRANE RECOVERY	161	1	CN	0.000	9.50				INSTALL PENDANT/FESTOON
830124	005641	D45J002		POLAR CRANE RECOVERY	161	4	CN	0.538	6.47				CLEAN/NDE MAIN HOOK
830125	005640	D45J001		POLAR CRANE RECOVERY	162	1	CN	0.286	3.60				INSTALL PENDANT/FESTOON
830125	005655	D45J002		POLAR CRANE RECOVERY	162	5	CN	0.667	9.75				REMOVE MAIN HOOK FROM POLAR CRANE
830125	005656	C70H001		POLAR CRANE RECOVERY	162	2	HP	0.354	3.13				HP SURVEYS/JOB COVERAGE
830126	005641	D45J002		POLAR CRANE RECOVERY	163	2	CN	0.132	2.35				CLEAN/NDE MAIN HOOK
830126	005641	D45J002		POLAR CRANE RECOVERY	163	2	QA	0.202	4.22				CLEAN/NDE MAIN HOOK
830126	005655	D45J002		POLAR CRANE RECOVERY	163	5	CN	0.870	10.57				REMOVE MAIN HOOK FROM POLAR CRANE
830126	005660	D45J003		POLAR CRANE RECOVERY	163	2	EL	0.333	5.35				DRIVE TEST

PNO. 8

.DATE 29 JUN 84 15:04:31 RID 31 29 JUN 84 DIERGE

UNC: DDS - ACTIVITY REPORT - POLAR CRANE RECOVERY		M 286 D							
DATE	RWP NUMBER	EXP TRK NUMBER	ACTIVITY	ENTRY NUMBER	PERS ENTERED	DEPT CODE	EXPOS REM	RWP HOURS	DESCRIPTION
830126	005662	C70H001	POLAR CRANE RECOVERY	163	1	HP	0.048	0.73	HP SURVEYS/JOB COVERAGE
830127	005666	D45J001	POLAR CRANE RECOVERY	164	2	RP	0.089	2.00	INSPECTION OF DECON OPERATIONS
830127	005673	C70H001	POLAR CRANE RECOVERY	164	1	HP	0.114	1.43	HP SURVEYS/JOB COVERAGE
830128	005677	D45J001	POLAR CRANE RECOVERY	165	9	CN	1.694	24.15	LOAD TEST BLOCK & TROLLEY
830128	005679	C70H001	POLAR CRANE RECOVERY	165	1	HP	0.038	0.92	HP SURVEYS/JOB COVERAGE
830128	005680	D45J003	POLAR CRANE RECOVERY	165	2	EL	0.316	5.48	DRIVE TEST
830131	005691	D45J002	POLAR CRANE RECOVERY	166	1	CN	0.108	1.67	CLEAN MAIN HOOK
830131	005692	D45J003	POLAR CRANE RECOVERY	166	2	EL	0.289	5.50	DRIVE TEST
830131	005693	D45J002	POLAR CRANE RECOVERY	166	2	HP	0.344	3.10	LOWER LS-HB TO CUTTING AREA
830131	005693	D45J002	POLAR CRANE RECOVERY	166	2	CN	0.364	4.28	LOWER LS-HB TO CUTTING AREA
830131	005694	D45J003	POLAR CRANE RECOVERY	166	2	CN	0.194	3.75	REMOVE COLLECTOR SHOES
830201	005713	C70H001	POLAR CRANE RECOVERY	167	1	HP	0.148	1.12	HP SURVEYS/JOB COVERAGE
830201	005716	D45J001	POLAR CRANE RECOVERY	167	4	CN	0.668	11.37	EXAMINE MAIN HOIST
830201	005716	D45J001	POLAR CRANE RECOVERY	167	1	EL	0.218	2.87	EXAMINE MAIN HOIST
830201	005717	D45J002	POLAR CRANE RECOVERY	167	1	EL	0.000	0.35	CLEAN/NDE MAIN HOOK
830201	005717	D45J002	POLAR CRANE RECOVERY	167	2	QA	0.187	2.67	CLEAN/NDE MAIN HOOK
830202	005724	C20H004	POLAR CRANE RECOVERY	168	2	CN	0.303	5.37	INSTALL TROLLEY SPIDER EQUIPMENT
830203	005713	C70H001	POLAR CRANE RECOVERY	169	1	HP	0.132	1.62	HP SURVEYS/JOB COVERAGE
830203	005734	D45J001	POLAR CRANE RECOVERY	169	1	RP	0.071	1.18	DECON OPERATIONS INSPECTION
830204	005713	C70H001	POLAR CRANE RECOVERY	170	1	HP	0.007	0.63	HP SURVEYS/JOB COVERAGE
830204	005744	C20H004	POLAR CRANE RECOVERY	170	6	CN	0.891	15.05	INSTALL TROLLEY SPIDER EQUIPMENT
830204	005745	C20H004	POLAR CRANE RECOVERY	170	4	CN	0.469	11.37	REMOVE TROLLEY SPIDER EQUIPMENT
830204	005748	D45J003	POLAR CRANE RECOVERY	170	1	CN	0.000	0.38	DISASSEMBLE RESISTOR BANK
830204	005748	D45J003	POLAR CRANE RECOVERY	170	2	EL	0.013	5.02	DISASSEMBLE RESISTOR BANK
830207	005754	D45J002	POLAR CRANE RECOVERY	171	6	CN	0.853	9.88	INSPECT WIRE ROPE
830207	005757	C70H001	POLAR CRANE RECOVERY	171	1	HP	0.060	0.80	HP SURVEYS/JOB COVERAGE
830207	005764	C20H004	POLAR CRANE RECOVERY	171	4	CN	0.764	13.13	REMOVE TROLLEY SPIDER EQUIPMENT
830208	005757	C70H001	POLAR CRANE RECOVERY	172	1	HP	0.095	1.50	HP SURVEYS/JOB COVERAGE
830208	005775	D45J001	POLAR CRANE RECOVERY	172	2	QA	0.112	1.78	CLEAN/NDE MAIN HOOK
830208	005775	D45J001	POLAR CRANE RECOVERY	172	1	CN	0.107	1.47	CLEAN/NDE MAIN HOOK
830208	005776	C20H004	POLAR CRANE RECOVERY	172	1	CN	0.328	4.93	INSTALL POWER AND CONTROL FOR SPIDER
830209	005782	C20H002	POLAR CRANE RECOVERY	173	2	CF	0.208	3.47	INSTALL FESTOON CABLE FOR CCTV CAMERA
830209	005782	C20H002	POLAR CRANE RECOVERY	173	1	HM	0.185	1.87	INSTALL FESTOON CABLE FOR CCTV CAMERA
830209	005784	D45J002	POLAR CRANE RECOVERY	173	2	HM	0.775	5.87	REPLACE TROLLEY COUPLINGS
830210	005757	C70H001	POLAR CRANE RECOVERY	174	1	HP	0.085	0.41	HP SURVEYS/JOB COVERAGE
830210	005792	D45J001	POLAR CRANE RECOVERY	174	2	CN	0.871	4.83	EXAMINE MAIN HOIST
830210	005792	D45J001	POLAR CRANE RECOVERY	174	1	EL	0.252	2.40	EXAMINE MAIN HOIST
830211	005757	C70H001	POLAR CRANE RECOVERY	175	1	HP	0.075	0.55	HP SURVEYS/JOB COVERAGE
830211	005798	C20H002	POLAR CRANE RECOVERY	175	1	UM	0.239	3.32	INSTALL CCTV EQUIPMENT ON POLAR CRANE
830211	005798	C20H002	POLAR CRANE RECOVERY	175	1	IC	0.140	3.52	INSTALL CCTV EQUIPMENT ON POLAR CRANE
830211	005798	C20H002	POLAR CRANE RECOVERY	175	1	RF	0.163	3.58	INSTALL CCTV EQUIPMENT ON POLAR CRANE
830211	005799	D45J002	POLAR CRANE RECOVERY	175	2	HM	0.569	5.77	REPLACE TROLLEY COUPLINGS
830214	005812	C70H001	POLAR CRANE RECOVERY	176	1	HP	0.087	0.78	HP SURVEYS/JOB COVERAGE
830214	005813	D45J002	POLAR CRANE RECOVERY	176	5	CN	1.385	15.73	INSTALL INSPECTION BASKET
830216	005835	C70H001	POLAR CRANE RECOVERY	178	1	HP	0.082	0.83	HP SURVEYS/JOB COVERAGE
830216	005844	D45J001	POLAR CRANE RECOVERY	178	2	HM	0.311	5.68	LIMITED/FULL OPERATIONS TEST
830216	005844	D45J001	POLAR CRANE RECOVERY	178	1	EL	0.150	2.98	LIMITED/FULL OPERATIONS TEST
830216	005844	D45J001	POLAR CRANE RECOVERY	178	2	QA	0.333	6.17	LIMITED/FULL OPERATIONS TEST
830216	005844	D45J001	POLAR CRANE RECOVERY	178	2	CN	0.366	6.70	LIMITED/FULL OPERATIONS TEST

PNO. 9

.DATE 29 JUN 84 15:04:31 RID 31 29 JUN 84 DOERGE

UNC: IDS - ACTIVITY REPORT - POLAR CRANE RECOVERY M 286 D

DATE	NUMBER	EXP TRX	ACTIVITY	ENTRY NUMBER	PERS ENTERED	DEPT CODE	EXPOS REM	RWP HOURS	DESCRIPTION
830216	006502	C20H001	POLAR CRANE RECOVERY	178	1	CN	0.110	1.40	MEASURE WIRE ROPE & PHOTOGRAPH
830217	005843	D45J004	POLAR CRANE RECOVERY	179	4	CN	0.694	9.13	INSTALL 5 TON HOIST
830217	005843	D45J004	POLAR CRANE RECOVERY	179	1	MM	0.205	2.93	INSTALL 5 TON HOIST
830217	005856	C20H001	POLAR CRANE RECOVERY	179	4	CN	0.502	9.53	PREPARE FOR LIMITED OPERATION TEST
830218	005835	C70H001	POLAR CRANE RECOVERY	180	1	HP	0.075	1.07	HP SURVEYS/JOB COVERAGE
830218	005858	D45J004	POLAR CRANE RECOVERY	180	11	CN	1.370	9.13	LOAD FRAME ASSEMBLY ON ELEV. 347'
830218	005858	D45J004	POLAR CRANE RECOVERY	180	1	MM	0.091	1.62	LOAD FRAME ASSEMBLY ON ELEV. 347'
830218	005864	D45J001	POLAR CRANE RECOVERY	180	1	CN	0.080	1.68	RECONTAMINATION TEST
830218	005871	D45J004	POLAR CRANE RECOVERY	180	2	CN	0.327	3.88	INSTALL 5 TON HOIST
830223	005878	C70H001	POLAR CRANE RECOVERY	182	1	HP	0.035	0.87	HP SURVEYS/JOB COVERAGE
830223	005900	D45J004	POLAR CRANE RECOVERY	182	2	CN	0.101	1.43	REPAIR 5 TON HOIST
830223	005903	D45J004	POLAR CRANE RECOVERY	182	4	CN	0.543	8.12	LOAD TEST FRAME ASSEMBLY ON ELEV. 347'
830224	005878	C70H001	POLAR CRANE RECOVERY	183	1	HP	0.276	1.20	HP SURVEYS/JOB COVERAGE
830224	005915	D45J004	POLAR CRANE RECOVERY	183	4	CN	1.049	10.35	LOAD TEST FRAME ASSEMBLY ON ELEV. 347'
830224	005915	D45J004	POLAR CRANE RECOVERY	183	1	EL	0.178	2.35	LOAD TEST FRAME ASSEMBLY ON ELEV. 347'
830225	005926	C70H001	POLAR CRANE RECOVERY	184	1	HP	0.120	1.18	HP SURVEYS/JOB COVERAGE
830225	005927	D45J003	POLAR CRANE RECOVERY	184	1	CN	0.112	1.37	ADJUST LIMIT SWITCH
830225	005927	D45J003	POLAR CRANE RECOVERY	184	1	EL	0.097	1.37	ADJUST LIMIT SWITCH
830225	005928	D45J004	POLAR CRANE RECOVERY	184	8	CN	1.386	10.03	LOAD TEST FRAME ASSEMBLY ON ELEV. 347'
830225	005928	D45J004	POLAR CRANE RECOVERY	184	1	MM	0.051	0.95	LOAD TEST FRAME ASSEMBLY ON ELEV. 347'
830302	005958	C20H004	POLAR CRANE RECOVERY	185	1	EL	0.192	2.52	REPAIR SPIDER
830302	005958	C20H004	POLAR CRANE RECOVERY	185	3	CN	0.644	8.27	REPAIR SPIDER
830302	005959	D45J001	POLAR CRANE RECOVERY	185	1	CN	0.145	1.90	INSPECT DECONTAMINATION EQUIPMENT
830302	005959	D45J001	POLAR CRANE RECOVERY	185	1	RP	0.139	1.90	INSPECT DECONTAMINATION EQUIPMENT
830302	005961	C70H001	POLAR CRANE RECOVERY	185	1	HP	0.147	2.10	HP SURVEYS/JOB COVERAGE
830303	005966	C70H001	POLAR CRANE RECOVERY	186	1	HP	0.130	1.42	HP SURVEYS/JOB COVERAGE
830303	005968	D45J003	POLAR CRANE RECOVERY	186	2	EL	0.323	5.07	ADJUST LIMIT SWITCH
830303	005969	C20H002	POLAR CRANE RECOVERY	186	3	CN	0.310	4.82	INSTALL 110V POWER TO CCTV SYSTEM
830303	005969	C20H002	POLAR CRANE RECOVERY	186	1	EL	0.074	1.57	INSTALL 110V POWER TO CCTV SYSTEM
830307	005986	C70H001	POLAR CRANE RECOVERY	187	3	HP	0.209	8.95	HP SURVEYS/JOB COVERAGE
830307	005987	D45J004	POLAR CRANE RECOVERY	187	1	EL	0.135	2.73	LOAD TEST FRAME ASSEMBLY ON ELEV. 347'
830307	005987	D45J004	POLAR CRANE RECOVERY	187	18	CN	3.738	44.60	LOAD TEST FRAME ASSEMBLY ON ELEV. 347'
830307	005987	D45J004	POLAR CRANE RECOVERY	187	2	MM	0.376	4.68	LOAD TEST FRAME ASSEMBLY ON ELEV. 347'
830308	006008	D45J004	POLAR CRANE RECOVERY	188	1	CN	0.114	1.55	INSPECT LOAD TEST FRAME
830308	006009	C70H001	POLAR CRANE RECOVERY	188	1	HP	0.057	0.53	HP SURVEYS/JOB COVERAGE
830308	006010	D45J004	POLAR CRANE RECOVERY	188	3	CN	0.453	5.63	LOAD TEST FRAME ASSEMBLY ON ELEV. 347'
830315	006058	D45J004	POLAR CRANE RECOVERY	193	5	CN	0.960	11.02	LOAD FRAME ASSEMBLY PREPARATIONS
830315	006058	D45J004	POLAR CRANE RECOVERY	193	1	EL	0.109	2.35	LOAD FRAME ASSEMBLY PREPARATIONS
830316	006058	D45J004	POLAR CRANE RECOVERY	194	5	CN	0.415	6.72	LOAD FRAME ASSEMBLY PREPARATIONS
830316	006058	D45J004	POLAR CRANE RECOVERY	194	1	EL	0.085	1.55	LOAD FRAME ASSEMBLY PREPARATIONS
830316	006067	C70H001	POLAR CRANE RECOVERY	194	3	HP	0.195	3.17	HP SURVEYS/JOB COVERAGE
830317	006034	C70H001	POLAR CRANE RECOVERY	195	1	HP	0.047	0.78	HP SURVEYS/JOB COVERAGE
830317	006072	D45J003	POLAR CRANE RECOVERY	195	4	CN	0.504	9.37	REDRESS BYPASS CABLES AND COVERS
830317	006072	D45J003	POLAR CRANE RECOVERY	195	1	EL	0.086	0.98	REDRESS BYPASS CABLES AND COVERS
830321	006090	D45J003	POLAR CRANE RECOVERY	197	2	CN	0.253	3.88	REDRESS BYPASS CABLES AND COVERS
830322	006115	C70H001	POLAR CRANE RECOVERY	198	1	HP	0.066	1.12	HP SURVEYS/JOB COVERAGE
830322	006116	D45J002	POLAR CRANE RECOVERY	198	2	CN	0.377	5.07	REPLACE EQUIPMENT COVERS
830322	006117	D45J002	POLAR CRANE RECOVERY	198	2	EL	0.412	5.85	LUBRICATE CRANE
830323	006116	D45J002	POLAR CRANE RECOVERY	199	2	CN	0.380	6.37	REPLACE EQUIPMENT COVERS

PNO. 10

.DATE 29 JUN 84 15:04:31 RID 31 29 JUN 84 DOERGE

UNC: DDS - ACTIVITY REPORT - POLAR CRANE RECOVERY M 286 D

#	DATE	RMP NUMBER	EXP TRK NUMBER	ACTIVITY	ENTRY NUMBER	PERS ENTERED	DEPT CODE	F POS REM	RMP HOURS	DESCRIPTION
830323	006116	D45J002		POLAR CRANE RECOVERY	199		1 MM	0.178	3.03	REPLACE EQUIPMENT COVERS
830328	006139	C70H001		POLAR CRANE RECOVERY	201		2 HP	0.155	1.87	HP SURVEYS/JOB COVERAGE
830328	006141	D45J003		POLAR CRANE RECOVERY	201		1 CN	0.194	2.50	REPLACE RESISTOR BANK COVERS
830328	006141	D45J003		POLAR CRANE RECOVERY	201		2 EL	0.324	5.07	REPLACE RESISTOR BANK COVERS
830328	006142	D45J002		POLAR CRANE RECOVERY	201		2 CN	0.275	5.10	BOLT DOWN EQUIPMENT COVERS
830330	006164	D45J002		POLAR CRANE RECOVERY	203		1 CN	0.152	3.18	LUBRICATE ELECTRIC MOTORS
830330	006164	D45J002		POLAR CRANE RECOVERY	203		2 EL	0.348	6.42	LUBRICATE ELECTRIC MOTORS
830330	006164	D45J002		POLAR CRANE RECOVERY	203		1 MM	0.136	3.08	LUBRICATE ELECTRIC MOTORS
830330	006175	D45J001		POLAR CRANE RECOVERY	203		1 CN	0.059	0.83	INSPECT ELEVATION 305'
830330	006175	D45J001		POLAR CRANE RECOVERY	203		1 RP	0.198	0.83	INSPECT ELEVATION 305'
830330	006176	C70H001		POLAR CRANE RECOVERY	203		1 HP	0.185	1.80	HP SURVEYS/JOB COVERAGE
830407	006223	D20A001		POLAR CRANE RECOVERY	205		2 CN	0.210	3.50	TAKE ELEVATIONS ON TOP OF D RINGS
830407	006225	D45J001		POLAR CRANE RECOVERY	205		1 CN	0.114	1.00	DECON INSPECTION
830407	006226	C70H001		POLAR CRANE RECOVERY	205		1 HP	0.000	0.73	HP SURVEYS/JOB COVERAGE
830411	006240	C70H001		POLAR CRANE RECOVERY	206		1 HP	0.199	1.50	HP SURVEYS/JOB COVERAGE
830411	006242	D45J001		POLAR CRANE RECOVERY	206		1 CN	0.073	0.83	DECON INSPECTION
830429	006372	C70H001		POLAR CRANE RECOVERY	211		1 HP	0.310	1.02	HP SURVEYS/JOB COVERAGE
830429	006379	D45J001		POLAR CRANE RECOVERY	211		1 CN	0.142	1.42	DECON INSPECTION
830504	006421	C70H001		POLAR CRANE RECOVERY	214		2 HP	0.623	2.02	HP SURVEYS/JOB COVERAGE
830504	006424	D45J003		POLAR CRANE RECOVERY	214		2 EL	0.376	6.27	SET LIMIT SWITCHES
830505	006430	C70H001		POLAR CRANE RECOVERY	215		1 HP	0.230	1.32	HP SURVEYS/JOB COVERAGE
830505	006433	D45J003		POLAR CRANE RECOVERY	215		2 EL	0.325	4.22	APPLY MARKER TAPE-DOME REFERENCE
830513	006492	C70H001		POLAR CRANE RECOVERY	220		2 HP	0.286	3.72	HP SURVEYS/JOB COVERAGE
830513	006496	D45J001		POLAR CRANE RECOVERY	220		1 CN	0.159	2.35	DECON INSPECTION
830520	006545	C70H001		POLAR CRANE RECOVERY	225		1 HP	0.214	2.23	HP SURVEYS/JOB COVERAGE
830520	006552	D45J003		POLAR CRANE RECOVERY	225		2 EL	0.335	4.98	CHANGE THERMAL OVERLOADS
830523	006563	C70H001		POLAR CRANE RECOVERY	226		1 HP	0.080	1.25	HP SURVEYS/JOB COVERAGE
830523	006566	D45J003		POLAR CRANE RECOVERY	226		2 EL	0.346	5.73	REPLACE POWER CONTACTORS
830525	006583	C70H001		POLAR CRANE RECOVERY	228		1 HP	0.078	0.87	HP SURVEYS/JOB COVERAGE
830525	006590	D45J003		POLAR CRANE RECOVERY	228		2 EL	0.457	5.03	REPLACE POWER CONTACTORS
830527	006583	C70H001		POLAR CRANE RECOVERY	230		1 HP	0.133	0.95	HP SURVEYS/JOB COVERAGE
830527	006597	D45J003		POLAR CRANE RECOVERY	230		1 CN	0.133	2.02	TEST CONNECTOR
830527	006597	D45J003		POLAR CRANE RECOVERY	230		1 EL	0.143	1.97	TEST CONNECTOR
830614	006727	D22E013		POLAR CRANE RECOVERY	238		3 CN	0.129	3.30	REMOVE BULLARDS FROM POLAR CRANE
830615	006724	C70H001		POLAR CRANE RECOVERY	239		1 HP	0.189	1.77	HP SURVEYS/JOB COVERAGE
830615	006733	D45J001		POLAR CRANE RECOVERY	239		1 UM	0.062	1.35	DECON INSPECTION
830615	006733	D45J001		POLAR CRANE RECOVERY	239		1 MM	0.064	1.33	DECON INSPECTION
830701	006822	C70H001		POLAR CRANE RECOVERY	248		1 HP	0.163	1.23	HP SURVEYS/JOB COVERAGE
830701	006851	C35N001		POLAR CRANE RECOVERY	248		3 CN	0.683	7.95	SHIELDING FOR POLAR CRANE OPERATOR
830701	006851	C35N001		POLAR CRANE RECOVERY	248		1 EL	0.152	2.87	SHIELDING FOR POLAR CRANE OPERATOR
830706	006858	C70H001		POLAR CRANE RECOVERY	250		3 HP	0.652	3.92	HP SURVEYS/JOB COVERAGE
830706	006886	C35N001		POLAR CRANE RECOVERY	250		3 CN	0.211	3.28	SHIELDING FOR POLAR CRANE OPERATOR
830812	007142	C70H001		POLAR CRANE RECOVERY	272		1 HP	0.080	1.40	HP SURVEYS/JOB COVERAGE
830812	007211	D45J003		POLAR CRANE RECOVERY	272		1 EL	0.040	0.95	WORK ON ELEVATION 347'
830812	007211	D45J003		POLAR CRANE RECOVERY	272		2 CN	0.191	3.32	WORK ON ELEVATION 347'
830815	007211	D45J003		POLAR CRANE RECOVERY	273		2 CN	0.129	1.92	WORK ON ELEVATION 347'
830815	007213	C70H001		POLAR CRANE RECOVERY	273		1 HP	0.055	0.80	HP SURVEYS/JOB COVERAGE
830822	007273	D45J003		POLAR CRANE RECOVERY	276		4 EL	0.512	7.18	INSTALL RELAYS/HEATERS
830822	007277	C70H001		POLAR CRANE RECOVERY	276		1 HP	0.126	1.20	HP SURVEYS/JOB COVERAGE

PNQ. 11

.DATE 29 JUN 84 15:04:31 RID 31 29 JUN 84 DOERGE

UNC: DDS - ACTIVITY REPORT - POLAR CRANE RECOVERY M 286 D

\* .EXP TRK .

\* DATE .RWP .NUMBER .NUMBER . ACTIVITY .NUMBER .ENTERD . CODE . REM . HOURS .

DESCRIPTION

DATE	RWP	NUMBER	NUMBER	ACTIVITY	NUMBER	ENTERD	CODE	REM	HOURS	DESCRIPTION
830823	007277	C70H001	POLAR CRANE RECOVERY	277	1	HF	0.101	0.83	HF SURVEYS/JOB COVERAGE	
830823	007300	D45J003	POLAR CRANE RECOVERY	277	2	EL	0.228	3.78	REPLACE CONTROL RELAYS	
830906	007390	C70H001	POLAR CRANE RECOVERY	282	1	HF	0.038	0.57	HF SURVEYS/JOB COVERAGE	
830906	007394	D45J001	POLAR CRANE RECOVERY	282	1	MM	0.107	2.53	PHOTOGRAPH 5 TON HOIST	
830906	007394	D45J001	POLAR CRANE RECOVERY	282	1	CN	0.073	1.20	PHOTOGRAPH 5 TON HOIST	
830906	007412	D45J001	POLAR CRANE RECOVERY	282	3	CN	0.211	5.28	CHANGE OIL-POLAR CRANE	
830907	007390	C70H001	POLAR CRANE RECOVERY	283	1	HF	0.069	0.98	HF SURVEYS/JOB COVERAGE	
830907	007412	D45J001	POLAR CRANE RECOVERY	283	4	CH	0.473	9.30	CHANGE OIL-POLAR CRANE	
830908	007390	C70H001	POLAR CRANE RECOVERY	284	2	HP	0.083	1.23	HF SURVEYS/JOB COVERAGE	
830908	007412	D45J001	POLAR CRANE RECOVERY	284	7	CN	0.792	14.23	CHANGE OIL-POLAR CRANE	
830908	067412	D45J001	POLAR CRANE RECOVERY	284	1	MM	0.000	0.63	CHANGE OIL-POLAR CRANE	
830909	007390	C70H001	POLAR CRANE RECOVERY	285	1	HF	0.072	1.02	HF SURVEYS/JOB COVERAGE	
830909	007437	D45J001	POLAR CRANE RECOVERY	285	2	EL	0.271	4.12	TROUBLE SHOOT POLAR CRANE	
830913	007446	C70H001	POLAR CRANE RECOVERY	287	2	HF	0.259	2.82	HF SURVEYS/JOB COVERAGE	
830913	007471	D45J001	POLAR CRANE RECOVERY	287	4	CN	0.470	8.10	CHANGE OIL-POLAR CRANE	
830913	007471	D45J001	POLAR CRANE RECOVERY	287	1	MM	0.036	1.13	CHANGE OIL-POLAR CRANE	
830914	007446	C70H001	POLAR CRANE RECOVERY	288	1	HF	0.150	1.73	HF SURVEYS/JOB COVERAGE	
830914	007471	D45J001	POLAR CRANE RECOVERY	288	4	CH	0.439	7.52	CHANGE OIL-POLAR CRANE	
830914	007481	C70H001	POLAR CRANE RECOVERY	288	1	HF	0.104	2.25	HF SURVEYS/JOB COVERAGE	
830914	007481	D45J001	POLAR CRANE RECOVERY	288	1	EL	0.100	2.33	INSPECTION OF RUNWAY RAILS	
830914	007481	D45J001	POLAR CRANE RECOVERY	288	2	CN	0.228	4.80	INSPECTION OF RUNWAY RAILS	
830914	007481	D45J001	POLAR CRANE RECOVERY	288	1	AD	0.093	2.58	INSPECTION OF RUNWAY RAILS	
830914	007481	D45J001	POLAR CRANE RECOVERY	288	1	HP	0.104	2.25	INSPECTION OF RUNWAY RAILS	
830919	007501	D45J003	POLAR CRANE RECOVERY	289	1	EL	0.082	1.78	INSPECT/REPAIR 5 TON HOIST	
830919	007501	D45J003	POLAR CRANE RECOVERY	289	7	CN	0.882	12.30	INSPECT/REPAIR 5 TON HOIST	
830919	007502	D45J004	POLAR CRANE RECOVERY	289	2	EL	0.262	5.07	INSPECTION OF RUNWAY RAILS	
830919	007502	D45J004	POLAR CRANE RECOVERY	289	2	CN	0.203	5.18	INSPECTION OF RUNWAY RAILS	
830919	007502	D45J004	POLAR CRANE RECOVERY	289	1	AD	0.120	2.38	INSPECTION OF RUNWAY RAILS	
830919	007504	C70H001	POLAR CRANE RECOVERY	289	2	HP	0.187	2.80	HF SURVEYS/JOB COVERAGE	
830920	007502	D45J004	POLAR CRANE RECOVERY	290	2	CN	0.187	3.78	INSPECTION OF RUNWAY RAILS	
830920	007502	D45J004	POLAR CRANE RECOVERY	290	1	EL	0.170	2.22	INSPECTION OF RUNWAY RAILS	
830920	007504	C70H001	POLAR CRANE RECOVERY	290	1	HF	0.076	1.65	HF SURVEYS/JOB COVERAGE	
830921	007504	C70H001	POLAR CRANE RECOVERY	291	2	HP	0.251	2.80	HF SURVEYS/JOB COVERAGE	
830921	007535	D45J003	POLAR CRANE RECOVERY	291	1	MM	0.061	1.30	REPAIR 5 TON HOIST	
830921	007535	D45J003	POLAR CRANE RECOVERY	291	2	CN	0.125	2.93	REPAIR 5 TON HOIST	
830922	007504	C70H001	POLAR CRANE RECOVERY	292	1	HF	0.095	1.08	HF SURVEYS/JOB COVERAGE	
830922	007540	D45J001	POLAR CRANE RECOVERY	292	5	CN	0.544	10.62	CHANGE OIL-POLAR CRANE	
830922	007540	D45J001	POLAR CRANE RECOVERY	292	1	MM	0.073	1.33	CHANGE OIL-POLAR CRANE	
830923	007504	C70H001	POLAR CRANE RECOVERY	293	1	HF	0.000	0.88	HF SURVEYS/JOB COVERAGE	
830923	007540	D45J001	POLAR CRANE RECOVERY	293	4	CN	0.437	8.12	CHANGE OIL-POLAR CRANE	
830923	007540	D45J001	POLAR CRANE RECOVERY	293	1	DE	0.002	1.62	CHANGE OIL-POLAR CRANE	
831012	007722	C70H001	POLAR CRANE RECOVERY	299	2	HF	0.363	3.47	HF SURVEYS/JOB COVERAGE	
831012	007747	D45J003	POLAR CRANE RECOVERY	299	3	EL	0.186	3.29	TROUBLESHOOT POLAR CRANE	
831219	008115	C70H001	POLAR CRANE RECOVERY	311	1	HF	0.016	0.47	HF SURVEYS/JOB COVERAGE	
831219	008119	D45J003	POLAR CRANE RECOVERY	311	2	EL	0.152	2.33	BRIDGE MOTOR TEST	
831219	008119	D45J003	POLAR CRANE RECOVERY	311	1	MM	0.074	1.70	BRIDGE MOTOR TEST	

.GRAND-TOTAL -

1037

155.44 2183.5

TMI-2

POLAR CRANE RECOVERY

AD - ADMINISTRATION

PND. 1

.DATE 29 JUN 84 13:15:56 RID 31 29 JUN 84 DOERGE

. UNC: DDS - ACTIVITY REPORT - POLAR CRANE RECOVERY M 286 D

* DATE	.RWP	.EMP TRF	.ACTIVITY	.ENTRY. PERS	.DEPT	.EXPOS	.RWP	.DESCRIPTION
* .NUMBER	.NUMBER	.NUMBER	.NUMBER	.ENTERD	.CODE	.REM	.HOURS	
810514	001054	D45J001	POLAR CRANE RECOVERY	10	2 AD	0.290	3.42	INITIAL CLIMB TO POLAR CRANE
810528	001151	D45J001	POLAR CRANE RECOVERY	11	2 AD	0.360	3.57	INSTALL SAFETY EQUIPMENT ON POLAR CRANE
811117	002449	D45J001	POLAR CRANE RECOVERY	21	1 AD	0.211	1.40	OVERHAUL INSPECTION OF POLAR CRANE
820224	003129	D45J001	POLAR CRANE RECOVERY	38	1 AD	0.189	2.42	SAFFTY EQUIPMENT INSPECTION
820827	004591	D45J001	POLAR CRANE RECOVERY	87	1 AD	0.102	1.50	POLAR CRANE INSPECTION
821124	005180	D45J002	POLAR CRANE RECOVERY	127	1 AD	0.142	2.78	INSPECTION OF POLAR CRANE
830914	007481	D45J001	POLAR CRANE RECOVERY	268	1 AD	0.093	2.58	INSPECTION OF RUNWAY RAILS
830919	007502	D45J004	POLAR CRANE RECOVERY	289	1 AD	0.120	2.36	INSPECTION OF RUNWAY RAILS

.GRAND-TOTAL -

. PERS ENTERD = 10

. EXPOS REM = 1.5070000

. RWP HOURS = 20.050000

TMI-2  
POLAR CRANE RECOVERY

CR - CORPORATE



PNO. 1

.DATE 29 JUN 84 13:15:56 RID 31 29 JUN 84 DOERGE

UNC: DDS - ACTIVITY REPORT - POLAR CRANE RECOVERY M 286 D

#	DATE	RWP NUMBER	EXP TRK NUMBER	ACTIVITY	ENTRY NUMBER	PERS ENTERED	DEPT CODE	EXPOS REM	RWP HOURS	DESCRIPTION
811117	002449	D45J001		POLAR CRANE RECOVERY	21	3	CR	1.133	8.03	OVERHAUL INSPECTION OF POLAR CRANE
811120	002476	C30G003		POLAR CRANE RECOVERY	22	4	CR	0.884	9.25	POLAR CRANE OVERHAUL INSPECTION
820226	003141	C30G003		POLAR CRANE RECOVERY	40	5	CR	1.580	13.20	PRE-DECON DATA ACQUISITION
820813	004479	D45J003		POLAR CRANE RECOVERY	81	1	CR	0.189	2.58	ELECTRICAL INSPECTION
820825	004571	D45J003		POLAR CRANE RECOVERY	86	1	CR	0.149	1.83	ELECTRICAL INSPECTION

\* GRAND-TOTAL -  
\* PERS ENTERED = 14  
\* EXPOS REM = 3.9350000  
\* RWP HOURS = 34.890000

TMI-2

POLAR CRANE RECOVERY

RP - RECOVERY PROGRAM

```

PNO. 1
DATE 29 JUN 84 13:15:56 RID 31 29 JUN 84 DOERGE
UNC: DDS - ACTIVITY REPORT - POLAR CRANE RECOVERY M 286 D
. RWP .EXP TRK . ENTRY. PFRS . DEPT .EXPOS .RWP .
# DATE .NUMBER. NUMBER . ACTIVITY .NUMBER. ENTERD. CODE . REM . HOURS. . DESCRIPTION
-----
820929 004806 D45J001 POLAR CRANE RECOVERY 99 1 RP 0.149 1.50 DECON OPERATIONS INSPECTION-POLAR CRANE
821230 005438 D45J001 POLAR CRANE RECOVERY 146 1 RP 0.079 1.27 RECONTAMINATION TEST
830127 005666 D45J001 POLAR CRANE RECOVERY 164 2 RP 0.089 2.00 INSPECTION OF DECON OPERATIONS
830203 005734 D45J001 POLAR CRANE RECOVERY 169 1 RP 0.071 1.18 DECON OPERATIONS INSPECTION
830211 005798 C20H002 POLAR CRANE RECOVERY 175 1 RP 0.163 3.58 INSTALL CCTV EQUIPMENT ON POLAR CRANE
830202 005959 D45J001 POLAR CRANE RECOVERY 185 1 RP 0.139 1.90 INSPECT DECONTAMINATION EQUIPMENT
830330 006175 D45J001 POLAR CRANE RECOVERY 203 1 RP 0.198 0.83 INSPECT ELEVATION 305'

. GRAND-TOTAL -
. PERS ENTERD = 8
. EXPOS REM = 0.8880000
. RWP HOURS = 12.260000

```

TMI-2  
POLAR CRANE RECOVERY

CN - CONTRACTOR (CATALYTIC)\*

\*Contractor personnel includes electricians, carpenters, millwrights, iron workers, pipefitters, boilermakers, laborers and radiation monitoring technicians.

PNO. 1

.DATE 29 JUN 84 13:15:56 RID 31 29 JUN 84 DOERGE

UNC: DDS - ACTIVITY REPORT - POLAR CRANE RECOVERY M 286 D

#	.RWF	.EXP TRK	.ACTIVITY	.ENTRY NUMBER	.PFRS	.DEPT	.EXPOS	.RWF	.HOURS	.DESCRIPTION
#	DATE	NUMBER	NUMBER	NUMBER	ENTERD.	CODE	RFM			
810701	001394	D45J001	POLAR CRANE RECOVERY	13	2	CN	0.677	8.12		INSPECTION & SURVEY OF POLAR CRANE
811117	002449	D45J001	POLAR CRANE RECOVERY	21	1	CN	0.538	3.33		OVERHAUL INSPECTION OF POLAR CRANE
811120	002476	C30G003	POLAR CRANE RECOVERY	22	2	CN	0.393	4.42		POLAR CRANE OVERHAUL INSPECTION
820226	003141	C30G003	POLAR CRANE RECOVERY	40	1	CN	0.274	3.60		PRE-DECON DATA ACQUISITION
820304	003187	C30G017	POLAR CRANE RECOVERY	43	1	CN	0.203	3.00		LOW PRESSURE FLUSH & DATA ACQUISITION
820305	003187	C30G017	POLAR CRANE RECOVERY	44	1	CN	0.099	1.50		LOW PRESSURE FLUSH & DATA ACQUISITION
820308	003213	C30G017	POLAR CRANE RECOVERY	45	1	CN	0.055	2.17		LOW PRESSURE FLUSH & DATA ACQUISITION
820326	003388	D45J001	POLAR CRANE RECOVERY	55	2	CN	0.356	4.00		INSPECTION/PHOTOGRAPHS/MEASUREMENTS
820326	003389	C30G017	POLAR CRANE RECOVERY	55	1	CN	0.132	1.83		POST DECON DATA ACQUISITION
820331	003441	D45J001	POLAR CRANE RECOVERY	56	2	CN	0.391	6.25		INSPECTION/PHOTOGRAPHS/MEASUREMENTS
820510	003802	D45J003	POLAR CRANE RECOVERY	61	4	CN	0.783	10.10		INSPECTION PLAN
820510	003803	D45J001	POLAR CRANE RECOVERY	61	2	CN	0.191	3.33		DATA ACQUISITION SURVEY
820513	003846	D45J003	POLAR CRANE RECOVERY	62	4	CN	0.526	7.63		INSPECTION PLAN
820513	003847	C30G001	POLAR CRANE RECOVERY	62	1	CN	0.191	1.42		H.P. SURVEYS/COVERAGE
820526	003948	C30G001	POLAR CRANE RECOVERY	63	1	CN	0.351	1.83		H.P. SURVEYS/COVERAGE
820526	003955	D45J003	POLAR CRANE RECOVERY	63	2	CN	0.352	4.83		INSPECTION PROGRAM
820727	004382	C30G019	POLAR CRANE RECOVERY	76	2	CN	0.260	1.75		INSTALL ALUMINUM PICKS FOR SPIDER
820812	004476	D45J002	POLAR CRANE RECOVERY	80	3	CN	0.417	6.50		MECHANICAL INSPECTION
820813	004476	D45J002	POLAR CRANE RECOVERY	81	1	CN	0.238	3.17		MECHANICAL INSPECTION
820813	004479	D45J003	POLAR CRANE RECOVERY	81	1	CN	0.273	2.33		ELECTRICAL INSPECTION
820816	004504	D45J001	POLAR CRANE RECOVERY	82	4	CN	0.519	7.08		FULL FLOOR PLUGS-347' ELEVATION
820816	004505	D45J001	POLAR CRANE RECOVERY	82	4	CN	0.769	7.33		MOVE BEAMS-347' ELEVATION
820818	004505	D45J001	POLAR CRANE RECOVERY	83	12	CN	2.619	19.42		MOVE BEAMS-347' ELEVATION
820820	004536	D45J001	POLAR CRANE RECOVERY	84	8	CN	1.893	10.75		MOVE BEAMS-347' ELEVATION
820820	004540	D45J001	POLAR CRANE RECOVERY	84	4	CN	1.062	7.25		INSTALL SPIDER LANDING PLATFORM
820823	004550	C90K001	POLAR CRANE RECOVERY	85	4	CN	0.677	6.62		INSTALL POWER BUGGY/REMOVE PENDANT
820823	004551	D45J002	POLAR CRANE RECOVERY	85	3	CN	0.331	3.75		MECHANICAL INSPECTION
820823	004552	D45J001	POLAR CRANE RECOVERY	85	2	CN	0.353	1.93		INSTALL SPIDER LANDING PLATFORM
820825	004571	D45J003	POLAR CRANE RECOVERY	86	2	CN	0.315	3.92		ELECTRICAL INSPECTION
820825	004572	D45J002	POLAR CRANE RECOVERY	86	3	CN	0.425	4.85		MOVE TROLLEY
820827	004585	D45J003	POLAR CRANE RECOVERY	87	3	CN	0.359	5.50		ELECTRICAL INSPECTION
820827	004586	D45J002	POLAR CRANE RECOVERY	87	4	CN	0.253	3.25		MOVE TROLLEY
820830	004602	D45J001	POLAR CRANE RECOVERY	88	2	CN	0.287	4.50		GEAR CASE OIL SAMPLES
820901	004620	D45J001	POLAR CRANE RECOVERY	89	4	CN	0.331	5.08		EQUIPMENT PROTECTION-POLAR CRANE
820903	004635	D45J001	POLAR CRANE RECOVERY	90	2	CN	0.005	1.58		SURVEY PENDANT CABLE
820908	004656	D45J001	POLAR CRANE RECOVERY	91	4	CN	0.564	6.78		EQUIPMENT PROTECTION-POLAR CRANE
820910	004656	D45J001	POLAR CRANE RECOVERY	92	8	CN	1.083	14.40		EQUIPMENT PROTECTION-POLAR CRANE
820915	004708	D45J001	POLAR CRANE RECOVERY	93	2	CN	0.281	4.33		EQUIPMENT PROTECTION-POLAR CRANE
820915	004710	D45J003	POLAR CRANE RECOVERY	93	3	CN	0.348	6.50		CABLE SAMPLE WALKDOWN
820917	004718	D45J002	POLAR CRANE RECOVERY	94	2	CN	0.284	3.83		INSTALL SAFETY LINES
820917	004723	D45J002	POLAR CRANE RECOVERY	94	3	CN	0.386	6.00		MECHANICAL INSPECTION
820920	004710	D45J003	POLAR CRANE RECOVERY	95	3	CN	0.906	4.32		CABLE SAMPLE WALKDOWN
820920	004732	D45J003	POLAR CRANE RECOVERY	95	4	CN	0.316	3.55		INSTALL CAMERA
820929	004806	D45J001	POLAR CRANE RECOVERY	99	1	CN	0.109	1.50		DECON OPERATIONS INSPECTION-POLAR CRANE
821008	004868	D45J003	POLAR CRANE RECOVERY	103	2	CN	0.333	4.37		TEMPORARY POWER WALKDOWN
821011	004882	D45J002	POLAR CRANE RECOVERY	104	5	CN	0.843	10.87		OPERATE SPIDER/ASSEMBLE HAND RAIL
821013	004882	D45J002	POLAR CRANE RECOVERY	105	4	CN	0.452	10.67		OPERATE SPIDER/ASSEMBLE HAND RAIL
821013	004898	D45J001	POLAR CRANE RECOVERY	105	2	CN	0.309	5.62		WALKDOWN POLAR CRANE TROLLEY
821014	004882	D45J002	POLAR CRANE RECOVERY	106	2	CN	0.213	4.18		OPERATE SPIDER/ASSEMBLE HAND RAIL

PN0.

.DATE 29 JUN 84 13:15:56 RID 31 29 JUN 84 DORGE

UNC: DDS - ACTIVITY REPORT - POLAR CRANE RECOVERY

M 286 B

#	DATE	RWP NUMBER	EXP TRK NUMBER	ACTIVITY	ENTRY NUMBER	FERS ENTERED	DEPT CODE	EXPOS REM	RWP HOURS	DESCRIPTION
821018	004930	C20H001	POLAR CRANE RECOVERY	108	4	CN	1.395	9.28	INSTALL 1500/2000 LB LIFT RIG	
821018	004932	C20H001	POLAR CRANE RECOVERY	108	4	CH	0.784	9.27	MODIFY LIFT RIG	
821020	004944	C20H001	POLAR CRANE RECOVERY	109	2	CN	0.339	3.37	MODIFY LIFT RIG	
821029	005000	D45J001	POLAR CRANE RECOVERY	115	2	CN	0.238	4.42	WIRE ROPE SAMPLE	
821029	005001	D45J003	POLAR CRANE RECOVERY	115	2	CN	0.185	2.83	TEMPORARY LIGHTING-POLAR CRANE	
821101	005012	D45J003	POLAR CRANE RECOVERY	116	7	CR	0.716	10.47	TEMPORARY POWER HOOKUP	
821101	005013	D45J002	POLAR CRANE RECOVERY	116	5	CN	0.604	12.63	COVER & GUARD REMOVAL	
821103	005012	D45J003	POLAR CRANE RECOVERY	117	4	CH	0.775	6.42	TEMPORARY POWER HOOKUP	
821103	005013	D45J002	POLAR CRANE RECOVERY	117	3	CN	0.423	7.20	COVER & GUARD REMOVAL	
821103	005034	D45J002	POLAR CRANE RECOVERY	117	3	CN	0.308	5.00	LUBRICATE CRANE	
821105	005047	D45J002	POLAR CRANE RECOVERY	118	4	CN	0.550	10.77	LUBRICATE CRANE	
821105	005048	D45J002	POLAR CRANE RECOVERY	118	2	CH	0.216	3.67	DISENGAGE CLUTCHES	
821105	005049	D45J003	POLAR CRANE RECOVERY	118	1	CH	0.165	2.78	BRIDGE CONTROL FUNCTIONAL TEST	
821108	005060	D45J001	POLAR CRANE RECOVERY	119	2	CN	0.143	2.12	LOCATE LOAD RIGGING	
821108	005061	D45J001	POLAR CRANE RECOVERY	119	2	CN	0.279	4.17	INSPECTION OF BRIDGE & TROLLEY	
821110	005061	D45J001	POLAR CRANE RECOVERY	120	2	CN	0.373	5.60	INSPECTION OF BRIDGE & TROLLEY	
821110	005063	D45J002	POLAR CRANE RECOVERY	120	4	CN	0.797	10.08	INSTALL SERVICE AIR TO POLAR CRANE	
821110	005080	D45J003	POLAR CRANE RECOVERY	120	1	CN	0.210	3.18	MAIN HOIST FUNCTIONAL TEST	
821112	005063	D45J002	POLAR CRANE RECOVERY	121	3	CN	0.530	6.82	INSTALL SERVICE AIR TO POLAR CRANE	
821112	005094	D45J001	POLAR CRANE RECOVERY	121	4	CN	0.813	11.08	JIB INSTALLATION	
821115	005104	D45J001	POLAR CRANE RECOVERY	122	2	CH	0.315	4.92	PENDANT/FESTOON INSTALLATION	
821115	005105	D45J003	POLAR CRANE RECOVERY	122	1	CN	0.133	2.08	BRIDGE CONTROL FUNCTIONAL TEST	
821115	005106	D45J002	POLAR CRANE RECOVERY	122	5	CN	0.650	9.93	MAIN HOIST BRAKE REPLACEMENT	
821115	005109	D45J002	POLAR CRANE RECOVERY	122	6	CN	0.718	13.83	TEMPORARY SERVICE AIR TO POLAR CRANE	
821117	005104	D45J001	POLAR CRANE RECOVERY	123	4	CN	0.431	8.27	PENDANT/FESTOON INSTALLATION	
821117	005106	D45J002	POLAR CRANE RECOVERY	123	1	CN	0.144	2.57	MAIN HOIST BRAKE REPLACEMENT	
821117	005125	D45J002	POLAR CRANE RECOVERY	123	4	CN	0.441	6.25	LUBRICATE CRANE	
821117	005126	D45J002	POLAR CRANE RECOVERY	123	4	CN	0.523	9.62	LUBRICATE CRANE	
821118	005126	D45J002	POLAR CRANE RECOVERY	124	4	CN	0.557	11.88	LUBRICATE CRANE	
821119	005126	D45J002	POLAR CRANE RECOVERY	125	4	CN	0.598	11.62	LUBRICATE CRANE	
821122	005155	D45J002	POLAR CRANE RECOVERY	126	1	CH	0.117	2.40	MAIN HOIST BRAKE REPLACEMENT	
821124	005155	D45J002	POLAR CRANE RECOVERY	127	5	CN	0.621	9.93	MAIN HOIST BRAKE REPLACEMENT	
821124	005180	D45J002	POLAR CRANE RECOVERY	127	1	CH	0.127	2.42	INSPECTION OF POLAR CRANE	
821124	005181	D45J002	POLAR CRANE RECOVERY	127	2	CH	0.103	2.67	INSPECTION OF POLAR CRANE	
821124	005182	D45J003	POLAR CRANE RECOVERY	127	1	CN	0.134	2.40	MAIN HOIST BRAKE REPLACEMENT	
821201	005182	D45J003	POLAR CRANE RECOVERY	129	1	CN	0.198	2.72	STRUCTURAL INSPECTION	
821201	005197	D45J002	POLAR CRANE RECOVERY	129	7	CH	1.155	19.28	LUBRICATE CRANE	
821201	005218	D45J002	POLAR CRANE RECOVERY	129	1	CH	0.137	2.42	STRUCTURAL INSPECTION	
821202	005197	D45J002	POLAR CRANE RECOVERY	130	4	CN	0.476	10.60	LUBRICATE CRANE	
821202	005226	D45J001	POLAR CRANE RECOVERY	130	3	CN	0.462	7.63	EXAMINE TROLLEY GEAR CASE	
821203	005197	D45J002	POLAR CRANE RECOVERY	131	4	CN	0.427	8.82	LUBRICATE CRANE	
821203	005224	D45J003	POLAR CRANE RECOVERY	131	1	CH	0.149	2.40	SLOW SPEED MOTORS TESTING	
821203	005233	D45J002	POLAR CRANE RECOVERY	131	1	CH	0.129	2.13	LUBRICATE WIRE ROPE	
821206	005250	D45J003	POLAR CRANE RECOVERY	132	4	CH	0.585	16.58	TROLLEY POWER PREPARATION	
821208	005224	D45J003	POLAR CRANE RECOVERY	133	1	CH	0.114	2.35	SLOW SPEED MOTORS TESTING	
821208	005250	D45J003	POLAR CRANE RECOVERY	133	4	CH	0.438	9.90	TROLLEY POWER PREPARATION	
821208	005270	D45J002	POLAR CRANE RECOVERY	133	4	CH	0.452	10.97	LUBRICATE BRIDGE&TROLLEY	
821209	005270	D45J002	POLAR CRANE RECOVERY	134	4	CH	0.467	9.57	LUBRICATE BRIDGE&TROLLEY	
821209	005286	D45J003	POLAR CRANE RECOVERY	134	4	CH	0.518	10.12	REMOVE COLLECTOR SHOES	

PID: 31 19 JUN 84 00ERGE  
 DATE OF JUN 84 13:15:52 PID 31 19 JUN 84 00ERGE  
 UMC: DDS - ACTIVITY REPORT - POLAR CRANE RECOVERY M 286 D

DATE	RWP NUMBER	EXP TRM NUMBER	ACTIVITY	ENTRY NUMBER	FERS ENTERED	DEPT CODE	EXPOS REH	RWP HOURS	DESCRIPTION
821209	005287	C20H001	POLAR CRANE RECOVERY	134	1	CN	0.185	1.77	RADIATION SURVEYS/JOB COVERAGE
821210	005285	D45J003	POLAR CRANE RECOVERY	135	1	CN	0.207	3.45	CRANE MOTOR TESTING
821210	005286	D45J003	POLAR CRANE RECOVERY	135	3	CN	0.350	6.60	REMOVE COLLECTOR SHOES
821214	005307	D45J003	POLAR CRANE RECOVERY	137	1	CN	0.197	3.58	SLOW SPEED MOTORS TESTING
821216	005340	D45J003	POLAR CRANE RECOVERY	138	12	CN	1.955	23.85	TROLLEY POWER CONTROL BYPASS
821217	005340	D45J003	POLAR CRANE RECOVERY	139	7	CN	0.703	18.70	TROLLEY POWER CONTROL BYPASS
821220	005363	D45J003	POLAR CRANE RECOVERY	140	1	CN	0.115	2.12	STRUCTURAL INSPECTION
821220	005364	D45J003	POLAR CRANE RECOVERY	140	1	CN	0.178	3.58	SLOW SPEED MOTORS TESTING
821221	005364	D45J003	POLAR CRANE RECOVERY	141	3	CN	0.392	7.43	SLOW SPEED MOTORS TESTING
821221	005440	C20H004	POLAR CRANE RECOVERY	141	2	CN	0.224	2.77	INSTALL TROLLEY SPIDER EQUIPMENT
821222	005364	D45J003	POLAR CRANE RECOVERY	142	2	CN	0.281	5.93	SLOW SPEED MOTORS TESTING
821228	005419	D45J003	POLAR CRANE RECOVERY	144	1	CN	0.140	2.47	MAIN HOIST RUN TESTING
821230	005438	D45J001	POLAR CRANE RECOVERY	146	1	CN	0.089	1.23	RECONTAMINATION TEST
821230	005440	C20H003	POLAR CRANE RECOVERY	146	2	CN	0.264	2.93	UNICOM RADIO SYSTEM FOR POLAR CRANE
830104	005455	D45J003	POLAR CRANE RECOVERY	147	1	CN	0.125	2.67	DRIVE TEST
830104	005456	D45J001	POLAR CRANE RECOVERY	147	1	CN	0.102	1.23	RETRIEVE RECONTAMINATION TEST RESULTS
830105	005481	D45J001	POLAR CRANE RECOVERY	148	4	CN	0.413	8.65	INSTALL SAFETY LINES ON POLAR CRANE
830106	005455	D45J003	POLAR CRANE RECOVERY	149	1	CN	0.127	2.90	DRIVE TEST
830107	005490	D45J001	POLAR CRANE RECOVERY	150	1	CN	0.140	2.53	RECONNECT COUPLINGS ON POLAR CRANE
830111	005508	D45J001	POLAR CRANE RECOVERY	152	2	CN	0.231	7.07	SURVEY RUNWAY RAIL
830111	005513	D45J001	POLAR CRANE RECOVERY	152	2	CN	0.287	6.25	SURVEY RUNWAY RAIL
830111	005533	C20H004	POLAR CRANE RECOVERY	152	6	CN	0.663	11.40	INSTALL TROLLEY SPIDER EQUIPMENT
830112	005508	D45J001	POLAR CRANE RECOVERY	153	2	CN	0.238	7.15	SURVEY RUNWAY RAIL
830112	005551	D45J001	POLAR CRANE RECOVERY	153	2	CN	0.228	6.17	MECHANICAL INSPECTION OF RUNWAY
830113	005557	D45J001	POLAR CRANE RECOVERY	154	2	CN	0.286	7.75	SURVEY RUNWAY RAIL
830113	005558	D45J001	POLAR CRANE RECOVERY	154	2	CN	0.251	2.78	SURVEY RUNWAY RAIL
830114	005569	C20H004	POLAR CRANE RECOVERY	155	11	CN	1.459	24.12	INSTALL TROLLEY SPIDER EQUIPMENT
830117	005577	D45J002	POLAR CRANE RECOVERY	156	6	CN	0.852	14.90	REMOVE WIRE ROPE LUBRICANT
830118	005600	C20H004	POLAR CRANE RECOVERY	157	2	CN	0.303	5.80	INSTALL TROLLEY SPIDER EQUIPMENT
830119	005602	D45J003	POLAR CRANE RECOVERY	158	1	CN	0.220	4.43	DRIVE TEST
830119	005612	D45J001	POLAR CRANE RECOVERY	158	2	CN	0.447	7.73	NRC INSPECTION OF POLAR CRANE
830119	005613	D45J001	POLAR CRANE RECOVERY	158	1	CN	0.207	3.97	CLEAN BRAKE WHEELS
830119	005615	D45J002	POLAR CRANE RECOVERY	158	1	CN	0.127	2.22	REMOVE LOAD HOOK FROM POLAR CRANE
830119	005617	C20H004	POLAR CRANE RECOVERY	158	2	CN	0.328	5.08	INSTALL TROLLEY SPIDER EQUIPMENT
830121	005629	D45J002	POLAR CRANE RECOVERY	160	1	CN	0.207	2.37	DECONTAMINATE MAIN HOOK
830124	005639	C20H004	POLAR CRANE RECOVERY	161	2	CN	0.479	7.40	INSTALL TROLLEY SPIDER EQUIPMENT
830124	005640	D45J001	POLAR CRANE RECOVERY	161	1	CN	0.000	9.50	INSTALL PENDANT/FESTOON
830124	005641	D45J002	POLAR CRANE RECOVERY	161	4	CN	0.538	6.47	CLEAN/NDE MAIN HOOK
830125	005640	D45J001	POLAR CRANE RECOVERY	162	1	CN	0.286	3.60	INSTALL PENDANT/FESTOON
830125	005655	D45J002	POLAR CRANE RECOVERY	162	5	CN	0.667	9.75	REMOVE MAIN HOOK FROM POLAR CRANE
830126	005641	D45J002	POLAR CRANE RECOVERY	163	2	CN	0.132	2.35	CLEAN/NDE MAIN HOOK
830126	005655	D45J002	POLAR CRANE RECOVERY	163	5	CN	0.870	10.57	REMOVE MAIN HOOK FROM POLAR CRANE
830128	005677	D45J001	POLAR CRANE RECOVERY	165	9	CN	1.694	24.15	LOAD TEST BLOCK & TROLLEY
830131	005691	D45J002	POLAR CRANE RECOVERY	166	1	CN	0.108	1.67	CLEAN MAIN HOOK
830131	005693	D45J002	POLAR CRANE RECOVERY	166	2	CN	0.364	4.28	LOWER LS-HB TO CUTTING AREA
830131	005694	D45J003	POLAR CRANE RECOVERY	166	2	CN	0.194	3.75	REMOVE COLLECTOR SHOES
830201	005716	D45J001	POLAR CRANE RECOVERY	167	4	CN	0.668	11.37	EXAMINE MAIN HOIST
830202	005724	C20H004	POLAR CRANE RECOVERY	168	2	CN	0.303	5.37	INSTALL TROLLEY SPIDER EQUIPMENT
830204	005744	C20H004	POLAR CRANE RECOVERY	170	6	CN	0.891	15.05	INSTALL TROLLEY SPIDER EQUIPMENT

PNO. 4

.DATE 29 JUN 84 13:15:56 RID 31 29 JUN 84 DOERGE

UNC: DDS - ACTIVITY REPORT - POLAR CRANE RECOVERY M 286 D

\* .RWP .EXP TRK . ENTRY. PERS . DEPT .EXPOS .RWP

\* DATE .NUMBER. NUMBER . ACTIVITY .NUMBER. ENTERD. CODE . REM . HOURS.

DATE	NUMBER	NUMBER	ACTIVITY	NUMBER	ENTERD	CODE	REM	HOURS	DESCRIPTION
830204	005745	C20H004	POLAR CRANE RECOVERY	170	4	CN	0.469	11.37	REMOVE TROLLEY SPIDER EQUIPMENT
830204	005748	D45J003	POLAR CRANE RECOVERY	170	1	CN	0.000	0.38	DISASSEMBLE RESISTOR BANK
830207	005754	D45J002	POLAR CRANE RECOVERY	171	6	CN	0.854	9.88	INSPECT WIRE ROPE
830207	005764	C20H004	POLAR CRANE RECOVERY	171	4	CN	0.764	13.13	REMOVE TROLLEY SPIDER EQUIPMENT
830208	005775	D45J001	POLAR CRANE RECOVERY	172	1	CN	0.107	1.47	CLEAN/NDE MAIN HOOK
830208	005776	C20H004	POLAR CRANE RECOVERY	172	2	CN	0.326	4.93	INSTALL POWER AND CONTROL FOR SPIDER
830209	005782	C20H002	POLAR CRANE RECOVERY	173	2	CN	0.204	3.47	INSTALL FESTOON CABLE FOR CCTV CAMERA
830210	005792	D45J001	POLAR CRANE RECOVERY	174	2	CN	0.631	4.83	EXAMINE MAIN HOIST
830214	005813	D45J002	POLAR CRANE RECOVERY	176	5	CN	1.385	15.73	INSTALL INSPECTION BASKET
830216	005844	D45J001	POLAR CRANE RECOVERY	178	2	CN	0.366	6.70	LIMITED/FULL OPERATIONS TEST
830216	006502	C20H001	POLAR CRANE RECOVERY	178	1	CN	0.110	1.40	MEASURE WIRE ROPE & PHOTOGRAPH
830217	005843	D45J004	POLAR CRANE RECOVERY	179	4	CN	0.694	9.13	INSTALL 5 TON HOIST
830217	005856	C20H001	POLAR CRANE RECOVERY	179	4	CN	0.502	9.53	PREPARE FOR LIMITED OPERATION TEST
830218	005858	D45J004	POLAR CRANE RECOVERY	180	11	CN	1.370	9.13	LOAD FRAME ASSEMBLY ON ELEV. 347'
830218	005864	D45J001	POLAR CRANE RECOVERY	180	1	CN	0.080	1.68	RECONTAMINATION TEST
830218	005871	D45J004	POLAR CRANE RECOVERY	180	2	CN	0.327	3.88	INSTALL 5 TON HOIST
830223	005900	D45J004	POLAR CRANE RECOVERY	182	2	CN	0.101	1.43	REPAIR 5 TON HOIST
830223	005903	D45J004	POLAR CRANE RECOVERY	182	4	CN	0.543	8.12	LOAD TEST FRAME ASSEMBLY ON ELEV. 347'
830224	005915	D45J004	POLAR CRANE RECOVERY	183	4	CN	1.049	10.35	LOAD TEST FRAME ASSEMBLY ON ELEV. 347'
830225	005927	D45J003	POLAR CRANE RECOVERY	184	1	CN	0.112	1.37	ADJUST LIMIT SWITCH
830225	005928	D45J004	POLAR CRANE RECOVERY	184	8	CN	1.386	10.03	LOAD TEST FRAME ASSEMBLY ON ELEV. 347'
830302	005958	C20H004	POLAR CRANE RECOVERY	185	3	CN	0.644	8.27	REPAIR SPIDER
830302	005959	D45J001	POLAR CRANE RECOVERY	185	1	CN	0.145	1.90	INSPECT DECONTAMINATION EQUIPMENT
830303	005969	C20H002	POLAR CRANE RECOVERY	186	3	CN	0.310	4.82	INSTALL 110V POWER TO CCTV SYSTEM
830307	005987	D45J004	POLAR CRANE RECOVERY	187	18	CN	3.738	44.60	LOAD TEST FRAME ASSEMBLY ON ELEV. 347'
830308	006008	D45J004	POLAR CRANE RECOVERY	188	1	CN	0.114	1.55	INSPECT LOAD TEST FRAME
830308	006010	D45J004	POLAR CRANE RECOVERY	188	3	CN	0.453	5.63	LOAD TEST FRAME ASSEMBLY ON ELEV. 347'
830315	006058	D45J004	POLAR CRANE RECOVERY	193	5	CN	0.960	11.02	LOAD FRAME ASSEMBLY PREPARATIONS
830316	006058	D45J004	POLAR CRANE RECOVERY	194	5	CN	0.445	6.72	LOAD FRAME ASSEMBLY PREPARATIONS
830317	006072	D45J003	POLAR CRANE RECOVERY	195	4	CN	0.504	9.37	REDRESS BYPASS CABLES AND COVERS
830324	006090	D45J003	POLAR CRANE RECOVERY	197	2	CN	0.253	3.88	REDRESS BYPASS CABLES AND COVERS
830322	006116	D45J002	POLAR CRANE RECOVERY	198	2	CN	0.377	5.07	REPLACE EQUIPMENT COVERS
830323	006116	D45J002	POLAR CRANE RECOVERY	199	2	CN	0.380	6.37	REPLACE EQUIPMENT COVERS
830328	006141	D45J003	POLAR CRANE RECOVERY	201	1	CN	0.194	2.50	REPLACE RESISTOR BANK COVERS
830328	006142	D45J002	POLAR CRANE RECOVERY	201	2	CN	0.275	5.10	BOLT DOWN EQUIPMENT COVERS
830330	006164	D45J002	POLAR CRANE RECOVERY	203	1	CN	0.152	3.18	LUBRICATE ELECTRIC MOTORS
830330	006175	D45J001	POLAR CRANE RECOVERY	203	1	CN	0.059	0.83	INSPECT ELEVATION 305'
830407	006223	D20A001	POLAR CRANE RECOVERY	205	2	CN	0.210	3.50	TAKE ELEVATIONS ON TOP OF D RINGS
830407	006225	D45J001	POLAR CRANE RECOVERY	205	1	CN	0.114	1.00	DECON INSPECTION
830411	006242	D45J001	POLAR CRANE RECOVERY	206	1	CN	0.073	0.83	DECON INSPECTION
830429	006379	D45J001	POLAR CRANE RECOVERY	211	1	CN	0.142	1.42	DECON INSPECTION
830513	006496	D45J001	POLAR CRANE RECOVERY	210	1	CN	0.159	2.35	DECON INSPECTION
830577	006597	D45J003	POLAR CRANE RECOVERY	230	1	CN	0.133	2.02	TEST CONNECTOR
830614	006727	D22E013	POLAR CRANE RECOVERY	277	9	CN	0.129	3.30	REMOVE BILLARDS FROM POLAR CRANE
830701	006851	C35N001	POLAR CRANE RECOVERY	248	3	CN	3.683	7.95	SHIELDING FOR POLAR CRANE OPERATOR
830706	006896	C35N001	POLAR CRANE RECOVERY	250	3	CN	0.211	3.28	SHIELDING FOR POLAR CRANE OPERATOR
830812	007211	D45J003	POLAR CRANE RECOVERY	272	2	CN	0.191	3.32	WORK ON ELEVATION 347'
830815	007211	D45J003	POLAR CRANE RECOVERY	272	2	CN	0.179	1.91	WORK ON ELEVATION 347'
830906	007394	D45J001	POLAR CRANE RECOVERY	281	1	CN	0.071	1.07	REPAIR 5 TON HOIST



PNO. 5

.DATE 29 JUN 84 13:15:55 RID 31 29 JUN 84 DORFCE

UNC: DBS - ACTIVITY REPORT - POLAR CRANE RECOVERY M 286 D

#	.RWP	.EXP	TKN	.ACTIVITY	.ENTRY	.PERS	.DEPT	.EXPOS	.RWP	.DESCRIPTION
* DATE	.NUMBER	.NUMBER			.NUMBER	ENTERD	.CODE	.RFB	.HOURS	
830906	007412	D45J001		POLAR CRANE RECOVERY	383	3	CH	0.311	5.28	CHANGE OIL-POLAR CRANE
830907	007412	D45J001		POLAR CRANE RECOVERY	383	4	CH	0.423	9.30	CHANGE OIL-POLAR CRANE
830908	007412	D45J001		POLAR CRANE RECOVERY	384	7	CH	0.792	14.23	CHANGE OIL-POLAR CRANE
830913	007471	D45J001		POLAR CRANE RECOVERY	387	4	CH	0.470	8.16	CHANGE OIL-POLAR CRANE
830914	007471	D45J001		POLAR CRANE RECOVERY	288	4	CN	0.435	7.52	CHANGE OIL-POLAR CRANE
830914	007481	D45J001		POLAR CRANE RECOVERY	288	2	CN	0.228	4.80	INSPECTION OF RUNWAY RAILS
830919	007501	D45J003		POLAR CRANE RECOVERY	289	7	CH	0.882	12.30	INSPECT/REPAIR 5 TON HOIST
830919	007502	D45J004		POLAR CRANE RECOVERY	289	2	CH	0.203	5.18	INSPECTION OF RUNWAY RAILS
830920	007502	D45J001		POLAR CRANE RECOVERY	290	2	CN	0.187	3.78	INSPECTION OF RUNWAY RAILS
830921	007535	D45J003		POLAR CRANE RECOVERY	291	2	CH	0.125	2.93	REPAIR 5 TON HOIST
830922	007540	D45J001		POLAR CRANE RECOVERY	292	5	CN	0.544	10.62	CHANGE OIL-POLAR CRANE
830923	007540	D45J001		POLAR CRANE RECOVERY	293	4	CH	0.437	8.12	CHANGE OIL-POLAR CRANE

.GRAND-TOTAL -  
 . PERS ENTERD = 618  
 . EXPOS REM = 91.666000  
 . RWP HOURS = 1323.9400

TMI-2

POLAR CRANE RECOVERY

QA - QUALITY ASSURANCE

PNO. 1

.DATE 09 JUN 84 13:10:56 TID T1 29 JUN 84 DREFGE

. UNC: DGS - ACTIVITY REPORT - POLAR CRANE RECOVERY M 284 I

* DATE	.RWF	.EXF TRK	.NUMBER	.NUMBER	ACTIVITY	.ENTRY	.PERS	.DEPT	.EXPOS	.RWF	.DESCRIPTION
* DATE	.NUMBER	.NUMBER				.NUMBER	.ENTERD.	.CODE	.REM	.HOURS	
810511	001074	D45J001	POLAR CRANE RECOVERY	10		1	0A		0.100	1.67	INITIAL CLIMB TO POLAR CRANE
810528	001151	D45J001	POLAR CRANE RECOVERY	11		1	0A		0.160	1.78	INSTALL SAFETY EQUIPMENT ON POLAR CRANE
810701	001394	D45J001	POLAR CRANE RECOVERY	13		1	0A		0.370	4.00	INSPECTION & SURVEY OF POLAR CRANE
821201	005218	D45J002	POLAR CRANE RECOVERY	129		1	0A		0.141	2.37	STRUCTURAL INSPECTION
821220	005363	D45J002	POLAR CRANE RECOVERY	140		1	0A		0.119	2.27	STRUCTURAL INSPECTION
830126	005641	D45J002	POLAR CRANE RECOVERY	163		2	0A		0.202	4.22	CLEAN/NDE MAIN HOOK
830201	005717	D45J002	POLAR CRANE RECOVERY	167		2	0A		0.187	2.67	CLEAN/NDE MAIN HOOK
830208	005775	D45J001	POLAR CRANE RECOVERY	170		2	0A		0.112	1.78	CLEAN/NDE MAIN HOOK
830216	005844	D45J001	POLAR CRANE RECOVERY	178		2	0A		0.333	6.17	LIMITED/FULL OPERATIONS TEST

.GRAND-TOTAL -  
. PERS ENTERD = 17  
. EXPOS REM = 1.7740000  
. RWF HOURS = 27.130000

TMI-2

POLAR CRANE RECOVERY

OP - SITE OPERATIONS

PNO. 1  
 .DATE 29 JUN 84 13:15:56 RID 31 CP JUN 84 DORGE  
 . UNC: DBS - ACTIVITY REPORT - POLAR CRANE RECOVERY H 286 D  
 \* .RWP .EXP TRK . ENTRY, PERS, DEPT .EXPOS .RWP .  
 \* DATE .NUMBER. NUMBER . ACTIVITY .NUMBER.ENTFRD. CODE . REM . HOURS. . DESCRIPTION .  
 \*-----\*  
 B30923 007540 D45J001 POLAR CRANE RECOVERY 293 1 0P 0.002 1.62 CHANGE OIL-POLAR CRANE  
 \*  
 .GRAND-TOTAL -  
 . PERS ENTERD = 1  
 . EXPOS REM = 0.0020000  
 . RWP HOURS = 1.6200000

TMI-2

POLAR CRANE RECOVERY

HP - HEALTH PHYSICS (RADIOLOGICAL ENGINEERING)

PNO. 1

.DATE 29 JUN 84 13:15:56 RID 31 29 JUN 84 DOERGE

. UMC: DDS - ACTIVITY REPORT - POLAR CRANE RECOVERY H 286 D

#	DATE	RWP NUMBER	EXP TRK NUMBER	ACTIVITY	ENTRY NUMBER	PERS ENTERED	DEPT CODE	EXPOS REM	RWP HOURS	DESCRIPTION
810528	001148	C50H001	POLAR CRANE RECOVERY	11	1	HP	0.480	1.58	GENERAL AREA DOSE RATE SURVEYS	
810528	001150	C50H001	POLAR CRANE RECOVERY	11	1	HP	0.271	1.08	GENERAL AREA DOSE RATE SURVEYS	
811120	002474	C30G003	POLAR CRANE RECOVERY	22	2	HP	0.399	5.08	POLAR CRANE OVERHAUL INSPECTION	
820224	003141	C30G003	POLAR CRANE RECOVERY	40	6	HP	1.909	16.33	PRE-DECON DATA ACQUISITION	
820302	003173	C30G016	POLAR CRANE RECOVERY	41	3	HP	0.741	11.75	LOW PRESSURE FLUSH OF POLAR CRANE	
820304	003187	C30G017	POLAR CRANE RECOVERY	43	3	HP	0.548	8.08	LOW PRESSURE FLUSH & DATA ACQUISITION	
820305	003187	C30G017	POLAR CRANE RECOVERY	44	3	HP	0.414	6.25	LOW PRESSURE FLUSH & DATA ACQUISITION	
820308	003213	C30G017	POLAR CRANE RECOVERY	45	4	HP	0.688	9.83	LOW PRESSURE FLUSH & DATA ACQUISITION	
820331	003434	C20H001	POLAR CRANE RECOVERY	56	1	HP	0.180	2.67	RADIATION SURVEYS/JOB COVERAGE	
820331	003440	C30G003	POLAR CRANE RECOVERY	56	1	HP	0.177	2.53	POST DECON DATA ACQUISITION	
820712	004267	C20H001	POLAR CRANE RECOVERY	71	3	HP	0.496	4.92	RADIATION SURVEYS/JOB COVERAGE	
820820	004534	D45J001	POLAR CRANE RECOVERY	84	1	HP	0.079	0.67	MOVE BEAMS-347' ELEVATION	
820820	004548	C20H001	POLAR CRANE RECOVERY	84	2	HP	0.112	1.43	RADIATION SURVEYS/JOB COVERAGE	
820823	004550	C90K001	POLAR CRANE RECOVERY	85	1	HP	0.126	1.43	INSTALL POWER BUGGY/REMOVE PENDANT	
820825	004587	C20H001	POLAR CRANE RECOVERY	86	1	HP	0.080	1.00	RADIATION SURVEYS/JOB COVERAGE	
820827	004591	D45J001	POLAR CRANE RECOVERY	87	1	HP	0.097	1.50	POLAR CRANE INSPECTION	
820830	004601	C20H001	POLAR CRANE RECOVERY	88	2	HP	0.043	1.67	RADIATION SURVEYS/JOB COVERAGE	
820908	004617	D45J002	POLAR CRANE RECOVERY	91	1	HP	0.000	0.67	GEAR CASE OIL SAMPLES	
820915	004708	D45J001	POLAR CRANE RECOVERY	93	2	HP	0.305	4.42	EQUIPMENT PROTECTION-POLAR CRANE	
820915	004710	D45J003	POLAR CRANE RECOVERY	93	1	HP	0.146	2.42	CABLE SAMPLE WALKDOWN	
820920	004710	D45J003	POLAR CRANE RECOVERY	95	1	HP	0.365	1.92	CABLE SAMPLE WALKDOWN	
821001	004825	C20H001	POLAR CRANE RECOVERY	100	1	HP	0.239	1.08	RADIATION SURVEYS/JOB COVERAGE	
821004	004838	C20H001	POLAR CRANE RECOVERY	101	1	HP	0.066	0.83	RADIATION SURVEYS/JOB COVERAGE	
821006	004859	C20H001	POLAR CRANE RECOVERY	102	1	HP	0.075	0.93	RADIATION SURVEYS/JOB COVERAGE	
821008	004867	C20H001	POLAR CRANE RECOVERY	103	1	HP	0.101	1.58	RADIATION SURVEYS/JOB COVERAGE	
821011	004881	C20H001	POLAR CRANE RECOVERY	104	1	HP	0.035	0.48	RADIATION SURVEYS/JOB COVERAGE	
821014	004905	C20H001	POLAR CRANE RECOVERY	106	1	HP	0.045	0.65	RADIATION SURVEYS/JOB COVERAGE	
821018	004934	C20H001	POLAR CRANE RECOVERY	108	1	HP	0.085	0.75	RADIATION SURVEYS/JOB COVERAGE	
821021	004949	C20H001	POLAR CRANE RECOVERY	110	1	HP	0.094	2.08	RADIATION SURVEYS/JOB COVERAGE	
821027	004992	D41C001	POLAR CRANE RECOVERY	113	2	HP	0.368	4.50	RADIOLOGICAL CHARACTERIZATION OF P.C.	
821028	004997	C20H001	POLAR CRANE RECOVERY	114	1	HP	0.018	0.72	RADIATION SURVEYS/JOB COVERAGE	
821029	004997	C20H001	POLAR CRANE RECOVERY	115	1	HP	0.028	0.85	RADIATION SURVEYS/JOB COVERAGE	
821101	005010	C20H001	POLAR CRANE RECOVERY	116	1	HP	0.049	0.25	RADIATION SURVEYS/JOB COVERAGE	
821101	005013	D45J002	POLAR CRANE RECOVERY	116	2	HP	0.251	5.72	DISCONNECT COUPLINGS	
821103	005013	D45J002	POLAR CRANE RECOVERY	117	1	HP	0.183	2.28	DISCONNECT COUPLINGS	
821108	005059	C20H001	POLAR CRANE RECOVERY	119	1	HP	0.125	1.05	RADIATION SURVEYS/JOB COVERAGE	
821110	005079	C20H001	POLAR CRANE RECOVERY	120	2	HP	0.304	3.05	RADIATION SURVEYS/JOB COVERAGE	
821112	005089	C20H001	POLAR CRANE RECOVERY	121	4	HP	1.179	12.35	RADIATION SURVEYS/JOB COVERAGE	
821115	005107	C20H001	POLAR CRANE RECOVERY	122	1	HP	0.176	2.25	RADIATION SURVEYS/JOB COVERAGE	
821118	005130	C20H001	POLAR CRANE RECOVERY	124	2	HP	0.270	4.73	RADIATION SURVEYS/JOB COVERAGE	
821119	005130	C20H001	POLAR CRANE RECOVERY	125	1	HP	0.175	1.45	RADIATION SURVEYS/JOB COVERAGE	
821122	005157	D20A001	POLAR CRANE RECOVERY	126	1	HP	0.267	2.40	RADIATION SURVEYS AND JOB COVERAGE	
821124	005184	C20H001	POLAR CRANE RECOVERY	127	1	HP	0.150	0.83	RADIATION SURVEYS/JOB COVERAGE	
821124	005186	C50H001	POLAR CRANE RECOVERY	127	1	HP	0.015	2.38	RADIATION SURVEYS/JOB COVERAGE	
821129	006194	C20H001	POLAR CRANE RECOVERY	128	1	HP	0.108	2.27	RADIATION SURVEYS/JOB COVERAGE	
821201	005216	C20H001	POLAR CRANE RECOVERY	129	1	HP	0.105	1.15	RADIATION SURVEYS/JOB COVERAGE	
821206	005248	C20H001	POLAR CRANE RECOVERY	132	1	HP	0.060	0.82	RADIATION SURVEYS/JOB COVERAGE	
821209	005287	C20H001	POLAR CRANE RECOVERY	134	1	HP	0.225	2.11	RADIATION SURVEYS/JOB COVERAGE	
821210	005295	C20H001	POLAR CRANE RECOVERY	135	2	HP	0.258	2.38	RADIATION SURVEYS/JOB COVERAGE	

PNO. 2

DATE 29 JUN 84 13:10:15 RID 01 29 JUN 84 DDFRGE

ORG: DBS - ACTIVITY REPORT - POLAR CRANE RECOVERY 1 28: D

* DATE	* RWP NUMBER	* EXP TSK NUMBER	ACTIVITY	ENTRY NUMBER	PERS	DEPT	LEAD	HOURS	DESCRIPTION
821213	005302	C20H001	POLAR CRANE RECOVERY	136	2	HP	0.180	3.00	RADIATION SURVEYS/JOB COVERAGE
821214	005302	C20H001	POLAR CRANE RECOVERY	137	1	HP	0.077	1.00	RADIATION SURVEYS/JOB COVERAGE
821216	005302	C20H001	POLAR CRANE RECOVERY	138	1	HP	0.026	0.97	RADIATION SURVEYS/JOB COVERAGE
821216	005340	D45J003	POLAR CRANE RECOVERY	139	1	HF	0.000	1.02	TROLLEY POWER CONTROL BYPASS
821217	005351	C20H001	POLAR CRANE RECOVERY	139	2	HF	0.333	2.90	RADIATION SURVEYS/JOB COVERAGE
831222	005386	C20H001	POLAR CRANE RECOVERY	147	1	HF	0.358	0.77	RADIATION SURVEYS/JOB COVERAGE
821228	005442	C70H001	POLAR CRANE RECOVERY	144	1	HF	0.181	1.08	HF SURVEYS/JOB COVERAGE
821229	005429	C70H001	POLAR CRANE RECOVERY	142	1	HF	0.139	0.57	HF SURVEYS/JOB COVERAGE
821230	005441	C70H001	POLAR CRANE RECOVERY	144	1	HF	0.129	1.82	HF SURVEYS/JOB COVERAGE
830104	005461	C70H001	POLAR CRANE RECOVERY	117	1	HF	0.110	1.95	HF SURVEYS/JOB COVERAGE
830105	005479	C70H001	POLAR CRANE RECOVERY	118	1	HF	0.106	1.07	HF SURVEYS/JOB COVERAGE
830106	005491	C70H001	POLAR CRANE RECOVERY	119	1	HF	0.112	1.00	HF SURVEYS/JOB COVERAGE
830107	005502	C70H001	POLAR CRANE RECOVERY	120	1	HF	0.111	1.57	HF SURVEYS/JOB COVERAGE
830111	005514	D45J001	POLAR CRANE RECOVERY	121	1	HF	0.170	3.60	SURVEY RUNWAY RAIL
830112	005514	D45J001	POLAR CRANE RECOVERY	122	1	HF	0.151	3.60	SURVEY RUNWAY RAIL
830112	005555	C70H001	POLAR CRANE RECOVERY	122	1	HF	0.079	0.98	HF SURVEYS/JOB COVERAGE
830113	005556	D45J001	POLAR CRANE RECOVERY	124	1	HF	0.177	3.75	SURVEY RUNWAY RAIL
830117	005578	C70H001	POLAR CRANE RECOVERY	124	1	HF	0.140	2.00	HF SURVEYS/JOB COVERAGE
830118	005598	C70H001	POLAR CRANE RECOVERY	157	1	HF	0.112	1.27	HF SURVEYS/JOB COVERAGE
830119	005614	C70H001	POLAR CRANE RECOVERY	158	2	HF	0.160	2.92	HF SURVEYS/JOB COVERAGE
830121	005630	C70H001	POLAR CRANE RECOVERY	160	1	HF	0.194	2.47	HF SURVEYS/JOB COVERAGE
830124	005635	C70H001	POLAR CRANE RECOVERY	161	1	HF	0.155	1.47	HF SURVEYS/JOB COVERAGE
830125	005656	C70H001	POLAR CRANE RECOVERY	162	2	HP	0.354	3.13	HF SURVEYS/JOB COVERAGE
830126	005662	C70H001	POLAR CRANE RECOVERY	163	1	HF	0.048	0.73	HF SURVEYS/JOB COVERAGE
830127	005673	C70H001	POLAR CRANE RECOVERY	164	1	HF	0.114	1.43	HF SURVEYS/JOB COVERAGE
830128	005679	C70H001	POLAR CRANE RECOVERY	165	1	HF	0.038	0.92	HF SURVEYS/JOB COVERAGE
830131	005693	D45J002	POLAR CRANE RECOVERY	166	2	HP	0.344	3.10	LOWER LS-HR TO CUTTING AREA
830201	005713	C70H001	POLAR CRANE RECOVERY	167	1	HP	0.148	1.12	HF SURVEYS/JOB COVERAGE
830203	005713	C70H001	POLAR CRANE RECOVERY	169	1	HP	0.132	1.62	HF SURVEYS/JOB COVERAGE
830204	005713	C70H001	POLAR CRANE RECOVERY	170	1	HP	0.027	0.63	HF SURVEYS/JOB COVERAGE
830207	005757	C70H001	POLAR CRANE RECOVERY	171	1	HP	0.060	0.80	HF SURVEYS/JOB COVERAGE
830208	005757	C70H001	POLAR CRANE RECOVERY	172	1	HP	0.095	1.00	HF SURVEYS/JOB COVERAGE
830210	005757	C70H001	POLAR CRANE RECOVERY	174	1	HP	0.045	0.42	HF SURVEYS/JOB COVERAGE
830211	005757	C70H001	POLAR CRANE RECOVERY	175	1	HP	0.029	0.55	HF SURVEYS/JOB COVERAGE
830214	005812	C70H001	POLAR CRANE RECOVERY	176	1	HP	0.087	0.78	HF SURVEYS/JOB COVERAGE
830216	005835	C70H001	POLAR CRANE RECOVERY	178	1	HP	0.082	0.83	HF SURVEYS/JOB COVERAGE
830218	005835	C70H001	POLAR CRANE RECOVERY	180	1	HF	0.075	1.07	HF SURVEYS/JOB COVERAGE
830223	005878	C70H001	POLAR CRANE RECOVERY	182	1	HP	0.035	0.87	HF SURVEYS/JOB COVERAGE
830224	005878	C70H001	POLAR CRANE RECOVERY	183	1	HP	0.276	1.20	HF SURVEYS/JOB COVERAGE
830225	005926	C70H001	POLAR CRANE RECOVERY	184	1	HP	0.120	1.18	HF SURVEYS/JOB COVERAGE
830302	005961	C70H001	POLAR CRANE RECOVERY	185	1	HP	0.147	2.10	HF SURVEYS/JOB COVERAGE
830303	005966	C70H001	POLAR CRANE RECOVERY	186	1	HP	0.130	1.42	HF SURVEYS/JOB COVERAGE
830307	005986	C70H001	POLAR CRANE RECOVERY	187	3	HP	0.209	8.95	HF SURVEYS/JOB COVERAGE
830308	006009	C70H001	POLAR CRANE RECOVERY	188	1	HP	0.057	0.53	HF SURVEYS/JOB COVERAGE
830316	006067	C70H001	POLAR CRANE RECOVERY	194	3	HP	0.195	3.17	HF SURVEYS/JOB COVERAGE
830317	006034	C70H001	POLAR CRANE RECOVERY	195	1	HP	0.047	0.78	HF SURVEYS/JOB COVERAGE
830322	006115	C70H001	POLAR CRANE RECOVERY	198	1	HP	0.066	1.12	HF SURVEYS/JOB COVERAGE
830328	006139	C70H001	POLAR CRANE RECOVERY	201	2	HP	0.155	1.87	HF SURVEYS/JOB COVERAGE
830330	006176	C70H001	POLAR CRANE RECOVERY	203	1	HP	0.185	1.80	HF SURVEYS/JOB COVERAGE



PNO. 3  
 .DATE 29 JUN 84 13:15:56 RID 31 29 JUN 84 DOERGE  
 .UNC: DDS - ACTIVITY REPORT - POLAR CRANE RECOVERY M 286 D

#	DATE	RWP	EXP	TRK	ACTIVITY	ENTR. NUMBER	PERS	DEPT	EXPOS	RWP	REMARKS	DESCRIPTION
#	DATE	NUMBER	NUMBER			NUMBER	ENTERED	CODE	REMARKS	HOURS		
830407	006226	C70H001			POLAR CRANE RECOVERY	205	1	HF	0.000	0.73		HP SURVEYS/JOB COVERAGE
830411	006240	C70H001			POLAR CRANE RECOVERY	206	1	HF	0.199	1.50		HP SURVEYS/JOB COVERAGE
830429	006372	C70H001			POLAR CRANE RECOVERY	211	1	HF	0.310	1.02		HP SURVEYS/JOB COVERAGE
830504	006421	C70H001			POLAR CRANE RECOVERY	214	2	HF	0.623	2.02		HP SURVEYS/JOB COVERAGE
830505	006430	C70H001			POLAR CRANE RECOVERY	215	1	HF	0.230	1.32		HP SURVEYS/JOB COVERAGE
830513	006492	C70H001			POLAR CRANE RECOVERY	220	2	HF	0.286	3.72		HP SURVEYS/JOB COVERAGE
830520	006515	C70H001			POLAR CRANE RECOVERY	225	1	HF	0.214	2.23		HP SURVEYS/JOB COVERAGE
830523	006563	C70H001			POLAR CRANE RECOVERY	226	1	HF	0.080	1.25		HP SURVEYS/JOB COVERAGE
830525	006583	C70H001			POLAR CRANE RECOVERY	228	1	HF	0.078	0.87		HP SURVEYS/JOB COVERAGE
830527	006583	C70H001			POLAR CRANE RECOVERY	230	1	HF	0.133	0.95		HP SURVEYS/JOB COVERAGE
830615	006724	C70H001			POLAR CRANE RECOVERY	239	1	HF	0.189	1.77		HP SURVEYS/JOB COVERAGE
830701	006822	C70H001			POLAR CRANE RECOVERY	248	1	HF	0.163	1.23		HP SURVEYS/JOB COVERAGE
830706	006858	C70H001			POLAR CRANE RECOVERY	250	3	HF	0.652	3.92		HP SURVEYS/JOB COVERAGE
830812	007142	C70H001			POLAR CRANE RECOVERY	272	1	HF	0.080	1.40		HP SURVEYS/JOB COVERAGE
830815	007213	C70H001			POLAR CRANE RECOVERY	273	1	HF	0.055	0.80		HP SURVEYS/JOB COVERAGE
830822	007277	C70H001			POLAR CRANE RECOVERY	276	1	HF	0.126	1.20		HP SURVEYS/JOB COVERAGE
830823	007277	C70H001			POLAR CRANE RECOVERY	277	1	HF	0.101	0.83		HP SURVEYS/JOB COVERAGE
830906	007390	C70H001			POLAR CRANE RECOVERY	287	1	HF	0.038	0.57		HP SURVEYS/JOB COVERAGE
830907	007390	C70H001			POLAR CRANE RECOVERY	283	1	HF	0.069	0.98		HP SURVEYS/JOB COVERAGE
830908	007390	C70H001			POLAR CRANE RECOVERY	284	2	HF	0.083	1.23		HP SURVEYS/JOB COVERAGE
830909	007390	C70H001			POLAR CRANE RECOVERY	285	1	HF	0.072	1.02		HP SURVEYS/JOB COVERAGE
830913	007446	C70H001			POLAR CRANE RECOVERY	287	2	HF	0.259	2.82		HP SURVEYS/JOB COVERAGE
830914	007446	C70H001			POLAR CRANE RECOVERY	288	1	HF	0.150	1.73		HP SURVEYS/JOB COVERAGE
830914	007481	C70H001			POLAR CRANE RECOVERY	288	1	HF	0.104	2.25		HP SURVEYS/JOB COVERAGE
830914	007481	B45J001			POLAR CRANE RECOVERY	288	1	HF	0.104	2.25		INSPECTION OF RUNWAY RAILS
830919	007504	C70H001			POLAR CRANE RECOVERY	289	2	HF	0.187	2.80		HP SURVEYS/JOB COVERAGE
830920	007504	C70H001			POLAR CRANE RECOVERY	290	1	HF	0.076	1.65		HP SURVEYS/JOB COVERAGE
830921	007504	C70H001			POLAR CRANE RECOVERY	291	2	HF	0.251	2.80		HP SURVEYS/JOB COVERAGE
830922	007504	C70H001			POLAR CRANE RECOVERY	292	1	HF	0.095	1.08		HP SURVEYS/JOB COVERAGE
830923	007504	C70H001			POLAR CRANE RECOVERY	293	1	HF	0.000	0.88		HP SURVEYS/JOB COVERAGE
831012	007722	C70H001			POLAR CRANE RECOVERY	299	2	HF	0.383	3.47		HP SURVEYS/JOB COVERAGE
831219	008115	C70H001			POLAR CRANE RECOVERY	311	1	HF	0.018	0.42		HP SURVEYS/JOB COVERAGE

\* GRAND-TOTAL -  
 . PERS ENTERED = 178  
 . EXPOS REM = 24.523000  
 . RWP HOURS = 286.951000

TMI-2

POLAR CRANE RECOVERY

CM - PLANT OPERATIONS MAINTENANCE GENERAL

```

PNG. 1
DATE 29 JUN 84 13:15:59 RID 31 29 JUN 84 BOERGE
* UCI: DDS - ACTIVITY REPORT - POLAR CRANE RECOVERY M 286 D
* .RWF .EXP TRK *
* DATE .NUMBER. NUMBER . ACTIVITY . NUMBER. ENTERD. CODE . REM . HOURS . DESCRIPTION
-----
820903 004617 D15J002 POLAR CRANE RECOVERY 90 1 CM 0.000 1.17 GEAR CASE OIL SAMPLES
820908 004617 D45J002 POLAR CRANE RECOVERY 91 1 CM 0.003 1.67 GEAR CASE OIL SAMPLES
821220 005363 D45J002 POLAR CRANE RECOVERY 140 1 CM 0.115 2.02 STRUCTURAL INSPECTION

* GRAND-TOTAL *
* PERS ENTERD * 3
* EXFOS REM * 6.1180000
* RWF HOURS * 4.8600000

```

TMI-2

POLAR CRANE RECOVERY

EL - ELECTRICAL MAINTENANCE

PND. 1  
 .DATE 27 JUN 84 13:15:56 RID 31 29 JUN 84 DOERGE M 286 D

* DATE	.RWP NUMBER	.EXP TRK NUMBER	ACTIVITY	.ENTRY NUMBER	.PERS ENTERD	.DEPT CODE	.EXPOS REM	.RWP HOURS	DESCRIPTION
810701	001394	D45J001	POLAR CRANE RECOVERY	13	1	EL	0.340	4.13	INSPECTION & SURVEY OF POLAR CRANE
820830	004600	D45J003	POLAR CRANE RECOVERY	88	4	EL	0.667	10.42	ELECTRICAL INSPECTION
820903	004600	D45J003	POLAR CRANE RECOVERY	90	4	EL	0.763	8.25	ELECTRICAL INSPECTION
821105	005049	D45J003	POLAR CRANE RECOVERY	118	2	EL	0.350	4.93	BRIDGE CONTROL FUNCTIONAL TEST
821108	005062	D45J003	POLAR CRANE RECOVERY	119	2	EL	0.223	3.43	TROLLEY FUNCTIONAL TEST
821110	005080	D45J003	POLAR CRANE RECOVERY	120	2	EL	0.366	6.27	MAIN HOIST FUNCTIONAL TEST
821115	005105	D45J003	POLAR CRANE RECOVERY	122	2	EL	0.301	4.50	BRIDGE CONTROL FUNCTIONAL TEST
821118	005133	D45J003	POLAR CRANE RECOVERY	124	2	EL	0.520	7.00	RESISTOR BANK TESTING
821119	005133	D45J003	POLAR CRANE RECOVERY	125	2	EL	0.438	5.10	RESISTOR BANK TESTING
821122	005156	D45J003	POLAR CRANE RECOVERY	126	2	EL	0.172	2.38	RESISTOR BANK TESTING
821124	005182	D45J003	POLAR CRANE RECOVERY	127	2	EL	0.307	4.53	BRIDGE DRIVE TESTING
821129	005182	D45J003	POLAR CRANE RECOVERY	128	2	EL	0.306	5.28	BRIDGE DRIVE TESTING
821201	005182	D45J003	POLAR CRANE RECOVERY	129	1	EL	0.200	2.48	BRIDGE DRIVE TESTING
821202	005224	D45J003	POLAR CRANE RECOVERY	130	2	EL	0.305	4.88	SLOW SPEED MOTORS TESTING
821203	005224	D45J003	POLAR CRANE RECOVERY	131	1	EL	0.142	2.23	SLOW SPEED MOTORS TESTING
821206	005224	D45J003	POLAR CRANE RECOVERY	132	2	EL	0.294	5.25	SLOW SPEED MOTORS TESTING
821208	005224	D45J003	POLAR CRANE RECOVERY	133	1	EL	0.120	2.27	SLOW SPEED MOTORS TESTING
821209	005285	D45J003	POLAR CRANE RECOVERY	134	2	EL	0.440	6.38	CRANE MOTOR TESTING
821210	005285	D45J003	POLAR CRANE RECOVERY	135	1	EL	0.203	3.48	CRANE MOTOR TESTING
821213	005307	D45J003	POLAR CRANE RECOVERY	136	2	EL	0.757	7.57	SLOW SPEED MOTORS TESTING
821214	005307	D45J003	POLAR CRANE RECOVERY	137	1	EL	0.230	3.50	SLOW SPEED MOTORS TESTING
821217	005353	D45J003	POLAR CRANE RECOVERY	139	3	EL	0.610	8.45	REPLACE RESISTOR BANK
821220	005364	D45J003	POLAR CRANE RECOVERY	140	1	EL	0.189	3.43	SLOW SPEED MOTORS TESTING
821221	005364	D45J003	POLAR CRANE RECOVERY	141	1	EL	0.134	2.92	SLOW SPEED MOTORS TESTING
821221	005382	D45J003	POLAR CRANE RECOVERY	141	4	EL	0.832	12.00	SLOW SPEED MOTORS TESTING
821222	005364	D45J003	POLAR CRANE RECOVERY	142	1	EL	0.104	2.88	SLOW SPEED MOTORS TESTING
821228	005419	D45J003	POLAR CRANE RECOVERY	144	1	EL	0.121	2.58	MAIN HOIST RUN TESTING
821229	005428	D45J003	POLAR CRANE RECOVERY	145	2	EL	0.293	5.00	SLOW SPEED MOTORS TESTING
821230	005442	D45J003	POLAR CRANE RECOVERY	146	2	EL	0.224	4.08	MAIN HOIST SLOW SPEED MOTOR TESTING
830104	005455	D45J003	POLAR CRANE RECOVERY	147	1	EL	0.162	2.65	DRIVE TEST
830105	005455	D45J003	POLAR CRANE RECOVERY	148	2	EL	0.251	4.72	DRIVE TEST
830106	005455	D45J003	POLAR CRANE RECOVERY	149	1	EL	0.133	2.83	DRIVE TEST
830107	005455	D45J003	POLAR CRANE RECOVERY	150	2	EL	0.238	4.47	DRIVE TEST
830107	005490	D45J001	POLAR CRANE RECOVERY	150	1	EL	0.131	2.42	RECONNECT COUPLINGS ON POLAR CRANE
830112	005509	D45J003	POLAR CRANE RECOVERY	153	2	EL	0.294	4.72	DRIVE TEST
830118	005602	D45J003	POLAR CRANE RECOVERY	157	2	EL	0.415	5.55	DRIVE TEST
830119	005602	D45J003	POLAR CRANE RECOVERY	158	1	EL	0.187	4.32	DRIVE TEST
830126	005660	D45J003	POLAR CRANE RECOVERY	163	2	EL	0.333	5.35	DRIVE TEST
830128	005680	D45J003	POLAR CRANE RECOVERY	165	2	EL	0.316	5.48	DRIVE TEST
830131	005692	D45J003	POLAR CRANE RECOVERY	166	2	EL	0.289	5.50	DRIVE TEST
830201	005716	D45J001	POLAR CRANE RECOVERY	167	1	EL	0.218	2.87	EXAMINE MAIN HOIST
830201	005717	D45J002	POLAR CRANE RECOVERY	167	1	EL	0.000	0.35	CLEAN/NDE MAIN HOOK
830204	005748	D45J003	POLAR CRANE RECOVERY	170	2	EL	0.013	5.02	DISASSEMBLE RESISTOR BANK
830210	005792	D45J001	POLAR CRANE RECOVERY	174	1	EL	0.252	2.43	EXAMINE MAIN HOIST
830216	005944	D45J001	POLAR CRANE RECOVERY	178	1	EL	0.150	2.98	LIMITED/FULL OPERATIONS TEST
830224	005915	D45J004	POLAR CRANE RECOVERY	183	1	EL	0.178	2.35	LOAD TEST FRAME ASSEMBLY ON ELEV. 347'
830225	005927	D45J003	POLAR CRANE RECOVERY	184	1	EL	0.097	1.37	ADJUST LIMIT SWITCH
830302	005958	C20H004	POLAR CRANE RECOVERY	185	1	EL	0.192	2.52	REPAIR SPIDER
830303	005968	D45J003	POLAR CRANE RECOVERY	186	2	EL	0.323	5.07	ADJUST LIMIT SWITCH

PNO. 2

.DATE 29 JUN 84 10:55:50 RID 31 29 JUN 84 DGEFCI

UNCL: UDS - ACTIVITY REPORT - POLAR CRANE RECOVERY M 286 D

* DATE	.RWP	.EXP TRK	.ACTIVITY	.ENTRY	.PERS	.DEPT	.EXPOS	.RWP	.DESCRIPTION
* NUMBER	.NUMBER	.NUMBER	.NUMBER	.ENTERD.	.CODE	.REM	.HOURS		
830303	005969	C20H002	POLAR CRANE RECOVERY	186	1	EL	0.074	1.57	INSTALL 110V POWER TO CCTV SYSTEM
830307	005987	D45J004	POLAR CRANE RECOVERY	187	1	EL	0.135	2.73	LOAD TEST FRAME ASSEMBLY ON ELEV. 347'
830315	006058	D45J004	POLAR CRANE RECOVERY	193	1	EL	0.109	2.35	LOAD FRAME ASSEMBLY PREPARATIONS
830316	006058	D45J004	POLAR CRANE RECOVERY	194	1	EL	0.085	1.55	LOAD FRAME ASSEMBLY PREPARATIONS
830317	006072	D45J003	POLAR CRANE RECOVERY	195	1	EL	0.086	0.98	REDRESS BYPASS CABLES AND COVERS
830322	006117	D45J002	POLAR CRANE RECOVERY	198	2	EL	0.412	5.85	LUBRICATE CRANE
830328	006141	D45J003	POLAR CRANE RECOVERY	201	2	EL	0.324	5.07	REPLACE RESISTOR BANK COVERS
830330	006164	D45J002	POLAR CRANE RECOVERY	203	2	EL	0.348	6.42	LUBRICATE ELECTRIC MOTORS
830504	006424	D45J003	POLAR CRANE RECOVERY	214	2	EL	0.376	6.27	SET LIMIT SWITCHES
830505	006433	D45J003	POLAR CRANE RECOVERY	215	2	EL	0.325	4.22	APPLY MARKER TAPE-DOME REFERENCE
830520	006552	D45J003	POLAR CRANE RECOVERY	225	2	EL	0.333	4.98	CHANGE THERMAL OVERLOADS
830523	006566	D45J003	POLAR CRANE RECOVERY	226	2	EL	0.346	5.73	REPLACE POWER CONTACTORS
830525	006590	D45J003	POLAR CRANE RECOVERY	228	2	EL	0.457	5.03	REPLACE POWER CONTACTORS
830527	006597	D45J003	POLAR CRANE RECOVERY	230	1	EL	0.143	1.97	TEST CONNECTOR
830701	006851	C35N001	POLAR CRANE RECOVERY	248	1	EL	0.152	2.87	SHIELDING FOR POLAR CRANE OPERATOR
830812	007211	D45J003	POLAR CRANE RECOVERY	272	1	EL	0.040	0.95	WORK ON ELEVATION 347'
830822	007273	D45J003	POLAR CRANE RECOVERY	276	4	EL	0.512	7.18	INSTALL RELAYS/HEATERS
830823	007300	D45J003	POLAR CRANE RECOVERY	277	2	EL	0.228	3.78	REPLACE CONTROL RELAYS
830909	007437	D45J001	POLAR CRANE RECOVERY	285	2	EL	0.271	4.12	TROUBLE SHOOT POLAR CRANE
830914	007481	D45J001	POLAR CRANE RECOVERY	288	1	EL	0.100	2.33	INSPECTION OF RUNWAY RAILS
830919	007501	D45J003	POLAR CRANE RECOVERY	289	1	EL	0.082	1.78	INSPECT/REPAIR 5 TON HOIST
830919	007502	D45J004	POLAR CRANE RECOVERY	289	2	EL	0.282	5.07	INSPECTION OF RUNWAY RAILS
830920	007502	D45J004	POLAR CRANE RECOVERY	290	1	EL	0.170	2.22	INSPECTION OF RUNWAY RAILS
831012	007747	D45J003	POLAR CRANE RECOVERY	299	3	EL	0.184	3.25	TROUBLESHOOT POLAR CRANE
831219	008119	D45J003	POLAR CRANE RECOVERY	311	2	EL	0.162	2.63	BRIDGE MOTOR TEST

.GRAND-TOTAL -  
. PERS ENTERD = 126  
. EXPOS REM = 19.913000  
. RWP HOURS = 309.47000

TMI-2

POLAR CRANE RECOVERY

IC - INSTRUMENT & CONTROL

PNO. 1

.DATE 29 JUN 84 13:15:56 RID 31 29 JUN 84 DPERCE

. UNC: DDS - ACTIVITY REPORT - POLAR CRANE RECOVERY M 286 D

* DATE	.RWP	.EXP TRK	.NUMBER	ACTIVITY	.NUMBER	.ENTERD.	.CODE	.EXPOS	.RWP	.REH	.HOURS	DESCRIPTION
820920	004732	D45J003		POLAR CRANE RECOVERY	95	2	IC	0.345		4.33		INSTALL CAMERA
820922	004732	D45J003		POLAR CRANE RECOVERY	96	2	IC	0.271		3.93		INSTALL CAMERA
831013	003897	D45J001		POLAR CRANE RECOVERY	105	1	IC	0.411		3.45		REPLACE CCTV CAMERA
830121	005629	D45J002		POLAR CRANE RECOVERY	160	1	IC	0.000		0.05		DECONTAMINATE MAIN HOOK
830211	005798	C20H002		POLAR CRANE RECOVERY	175	1	IC	0.140		3.52		INSTALL CCTV EQUIPMENT ON POLAR CRANE

. GRAND-TOTAL -  
. PERS ENTERD = 7  
. EXPOS REH = 1.1670000  
. RWP HOURS = 15.280000



TMI-2

POLAR CRANE RECOVERY

MM - MECHANICAL MAINTENANCE

PNO. 1

.DATE 29 JUN 84 13:15:56 RID 31 29 JUN 84 DOERGE

. UNC: DBS - ACTIVITY REPORT - POLAR CRANE RECOVERY M 286 D

\* .RWP .EXP TRK .

\* DATE .NUMBER . NUMBER . ACTIVITY . NUMBER . ENTERD . CODE . REM . HOURS .

DESCRIPTION

DATE	NUMBER	NUMBER	ACTIVITY	NUMBER	ENTERD	CODE	REM	HOURS	DESCRIPTION
820827	004586	D45J002	POLAR CRANE RECOVERY	87	2	MM	0.484	6.67	MOVE TROLLEY
820830	004602	D45J001	POLAR CRANE RECOVERY	88	2	MM	0.334	4.83	GEAR CASE OIL SAMPLES
821117	005106	D45J002	POLAR CRANE RECOVERY	123	3	MM	0.489	8.28	MAIN HOIST BRAKE REPLACEMENT
821118	005106	D45J002	POLAR CRANE RECOVERY	124	3	MM	0.489	9.78	MAIN HOIST BRAKE REPLACEMENT
821119	005106	D45J002	POLAR CRANE RECOVERY	125	3	MM	0.418	8.45	MAIN HOIST BRAKE REPLACEMENT
821122	005155	D45J002	POLAR CRANE RECOVERY	126	3	MM	0.350	8.02	MAIN HOIST BRAKE REPLACEMENT
821203	005233	D45J002	POLAR CRANE RECOVERY	131	2	MM	0.279	4.45	LUBRICATE WIRE ROPE
821208	005273	D45J001	POLAR CRANE RECOVERY	133	2	MM	0.241	4.80	CLEAN BRAKE WHEELS
821210	005273	D45J001	POLAR CRANE RECOVERY	135	1	MM	0.110	2.20	CLEAN BRAKE WHEELS
830105	005477	D45J001	POLAR CRANE RECOVERY	148	3	MM	0.459	7.37	RECONNECT COUPLINGS ON POLAR CRANE
830107	005490	D45J001	POLAR CRANE RECOVERY	150	2	MM	0.282	4.77	RECONNECT COUPLINGS ON POLAR CRANE
830212	005542	D45J001	POLAR CRANE RECOVERY	153	2	MM	0.410	4.65	CLEAN BRAKE WHEELS
830114	005571	D45J001	POLAR CRANE RECOVERY	155	2	MM	0.432	5.30	RECONNECT COUPLINGS ON POLAR CRANE
830118	005599	D45J001	POLAR CRANE RECOVERY	157	2	MM	0.601	5.67	RECONNECT COUPLINGS ON POLAR CRANE
830119	005613	D45J001	POLAR CRANE RECOVERY	158	2	MM	0.608	7.35	CLEAN BRAKE WHEELS
830121	005629	D45J002	POLAR CRANE RECOVERY	160	1	MM	0.204	2.37	DECONTAMINATE MAIN HOOK
830209	005782	C20H002	POLAR CRANE RECOVERY	173	1	MM	0.105	1.87	INSTALL FESTOON CABLE FOR CCTV CAMERA
830209	005784	D45J002	POLAR CRANE RECOVERY	173	2	MM	0.775	5.97	REPLACE TROLLEY COUPLINGS
830211	005799	D45J002	POLAR CRANE RECOVERY	175	2	MM	0.569	5.77	REPLACE TROLLEY COUPLINGS
830216	005844	D45J001	POLAR CRANE RECOVERY	178	2	MM	0.311	5.68	LIMITED/FULL OPERATIONS TEST
830217	005843	D45J004	POLAR CRANE RECOVERY	179	1	MM	0.205	2.93	INSTALL 5 TON HOIST
830218	005858	D45J004	POLAR CRANE RECOVERY	180	1	MM	0.091	1.62	LOAD FRAME ASSEMBLY ON ELEV. 347'
830225	005928	D45J004	POLAR CRANE RECOVERY	184	1	MM	0.051	0.95	LOAD TEST FRAME ASSEMBLY ON ELEV. 347'
830307	005987	D45J004	POLAR CRANE RECOVERY	187	2	MM	0.376	4.68	LOAD TEST FRAME ASSEMBLY ON ELEV. 347'
830323	006116	D45J002	POLAR CRANE RECOVERY	199	1	MM	0.128	3.03	REPLACE EQUIPMENT COVERS
830330	006164	D45J002	POLAR CRANE RECOVERY	203	1	MM	0.136	3.08	LUBRICATE ELECTRIC MOTORS
830615	006733	D45J001	POLAR CRANE RECOVERY	239	1	MM	0.064	1.33	DECON INSPECTION
830906	007394	D45J001	POLAR CRANE RECOVERY	282	1	MM	0.107	2.53	PHOTOGRAPH 5 TON HOIST
830908	007412	D45J001	POLAR CRANE RECOVERY	284	1	MM	0.000	0.63	CHANGE OIL-POLAR CRANE
830913	007471	D45J001	POLAR CRANE RECOVERY	287	1	MM	0.036	1.13	CHANGE OIL-POLAR CRANE
830921	007535	D45J003	POLAR CRANE RECOVERY	291	1	MM	0.061	1.30	REPAIR 5 TON HOIST
830922	007540	D45J001	POLAR CRANE RECOVERY	292	1	MM	0.073	1.35	CHANGE OIL-POLAR CRANE
831219	008119	D45J003	POLAR CRANE RECOVERY	311	1	MM	0.074	1.70	BRIDGE MOTOR TEST

. GRAND-TOTAL -  
. PERS ENTERD = 56  
. EXPOS REM = 9.3520000  
. RWP HOURS = 140.51000

TMI-2

POLAR CRANE RECOVERY

UM - UTILITIES MAINTENANCE

PNO. 1

.DATE 29 JUN 84 13:15:56 R1D 31 29 JUN 84 DOERGE

. UNC: DDS - ACTIVITY REPORT - POLAR CRANE RECOVERY M 286 D

.RWP	.EXP TRK			.ENTRY	.PERS	.DEPT	.EXPOS	.RWP		
DATE	NUMBER	NUMBER	ACTIVITY	NUMBER	ENTERD	CODE	REM	HOURS		DESCRIPTION
820226	003141	C30G003	POLAR CRANE RECOVERY	40	1	UH	0.272	2.00		PRE-DECON DATA ACQUISITION
830211	005798	C20H002	POLAR CRANE RECOVERY	175	1	UH	0.239	3.32		INSTALL CCTV EQUIPMENT ON POLAR CRANE
830615	006733	D45J001	POLAR CRANE RECOVERY	239	1	UH	0.062	1.35		DECON INSPECTION

.GRAND-TOTAL -  
. PERS ENTERD = 3  
. EXPOS REM = 0.5930000  
. RWP HOURS = 6.6700000

## 5.0 FIGURES

This section includes a drawing of the TMI-2 polar crane, showing the major components which are addressed in the computer report description column and photographs of certain areas of the polar crane where major repair and decontamination were performed.

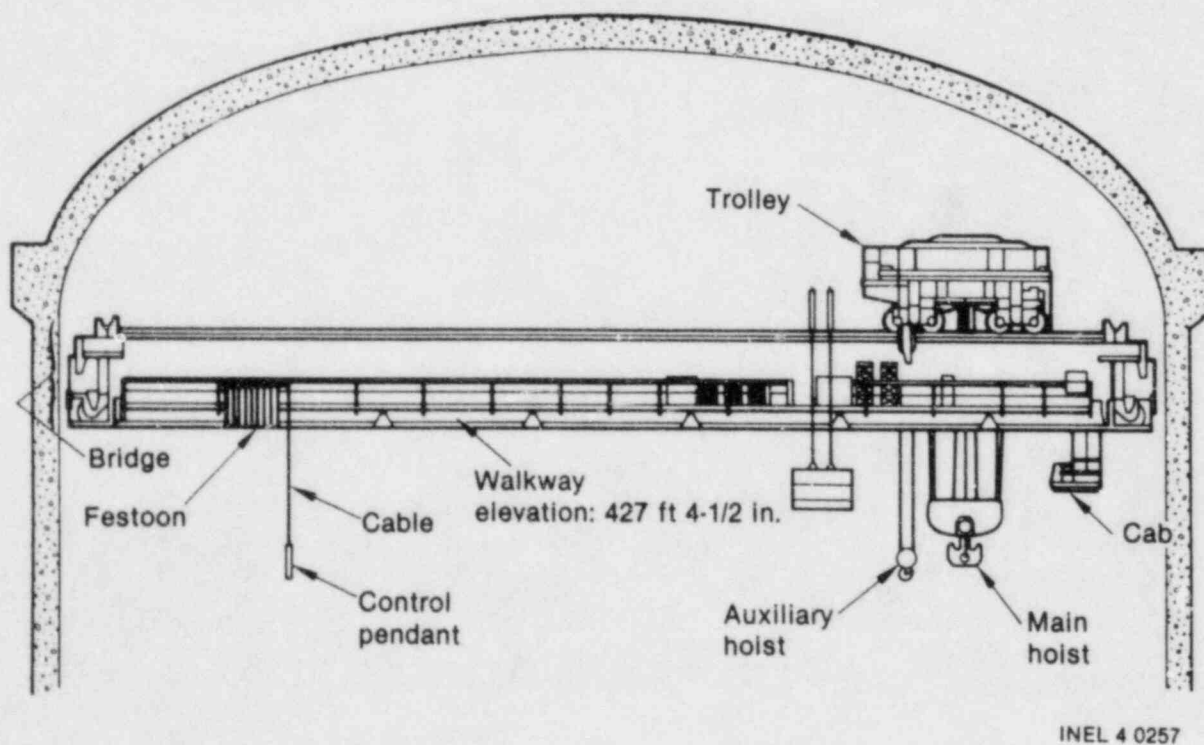


Figure 1. Major components of the TMI-2 polar crane.

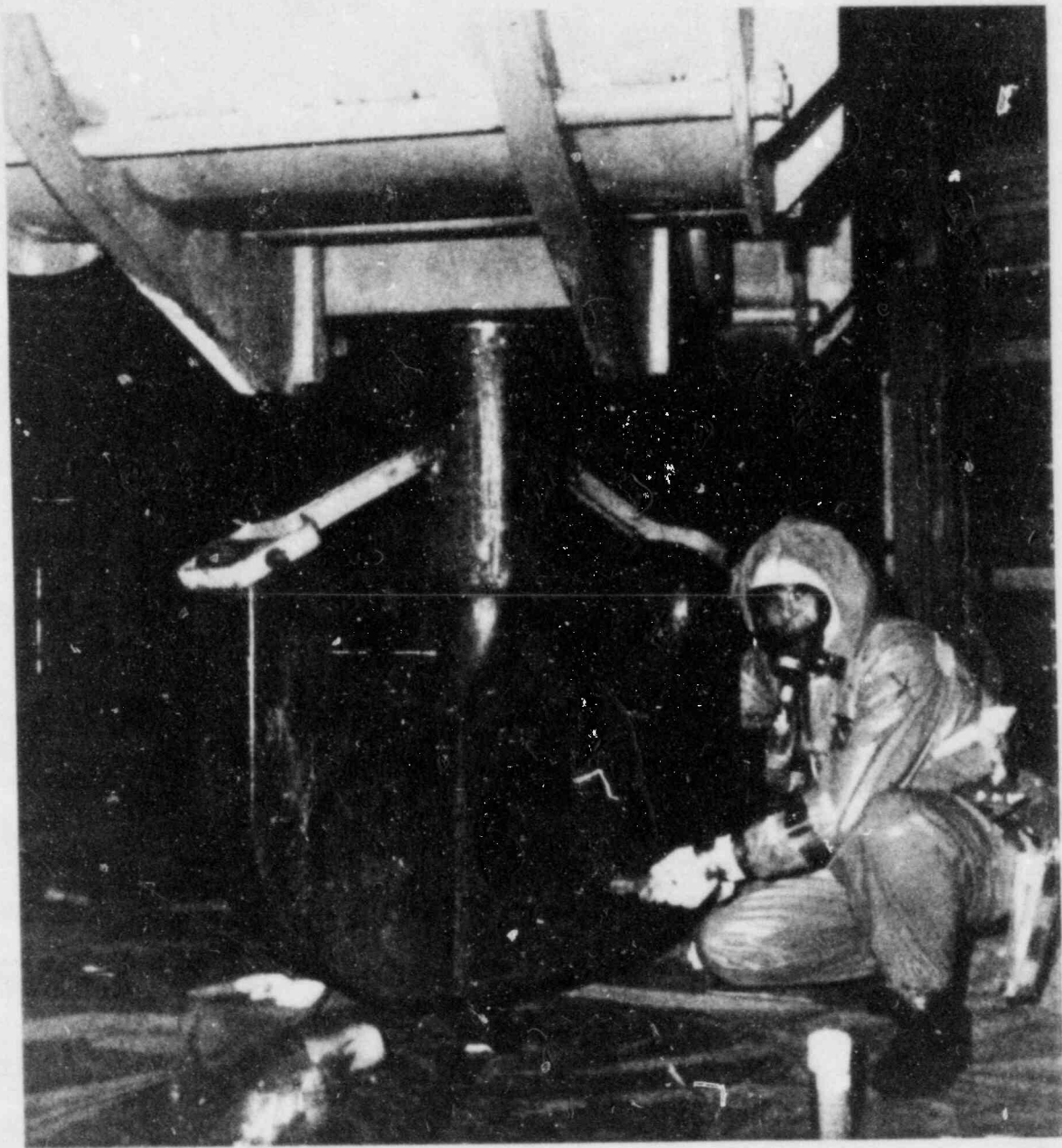


Figure 2. TMI-2 polar crane main hoist hook during decontamination.

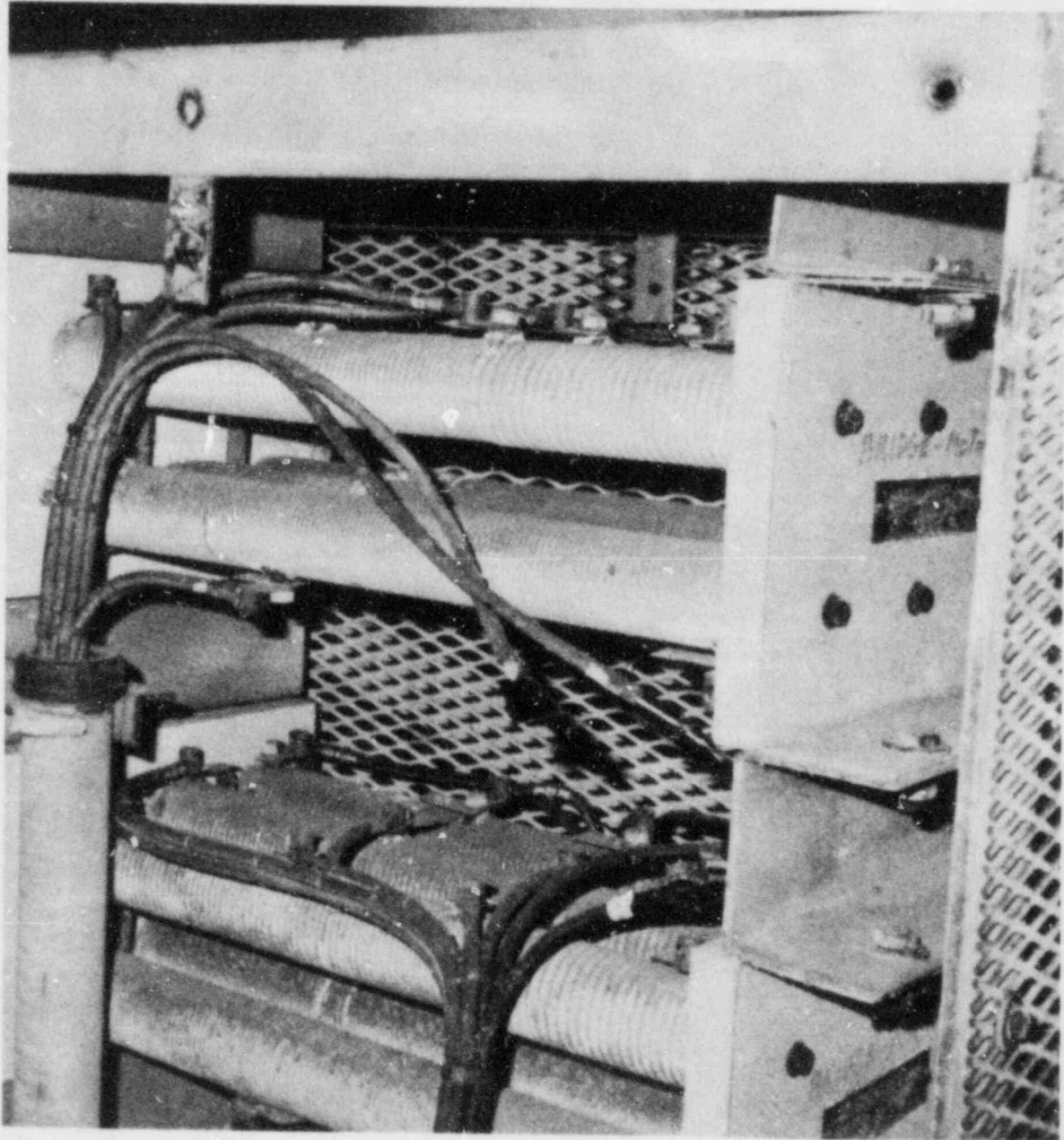


Figure 3. Typical TMI-2 polar crane resistor bank.



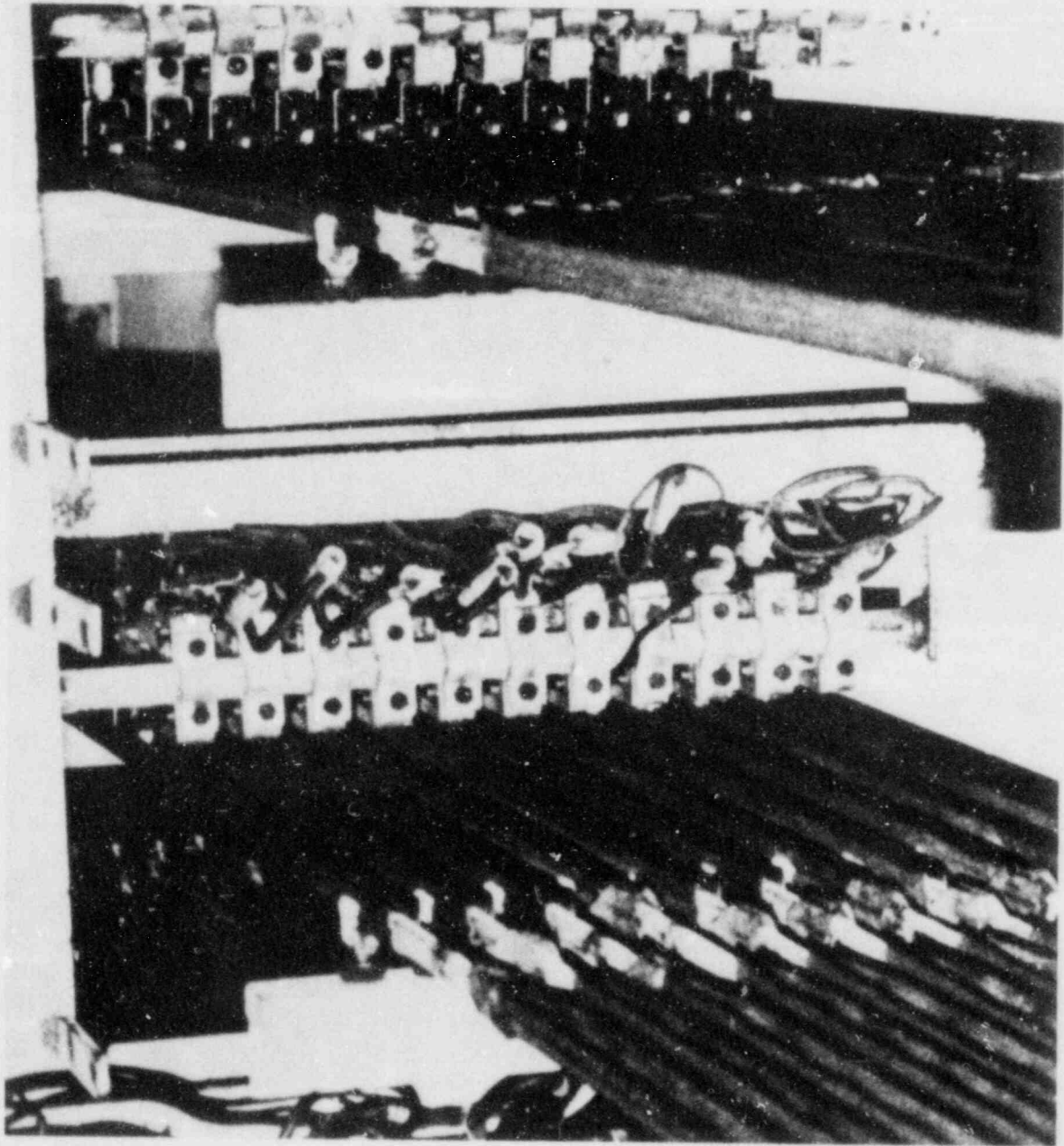


Figure 4. Close-up of buss bars.

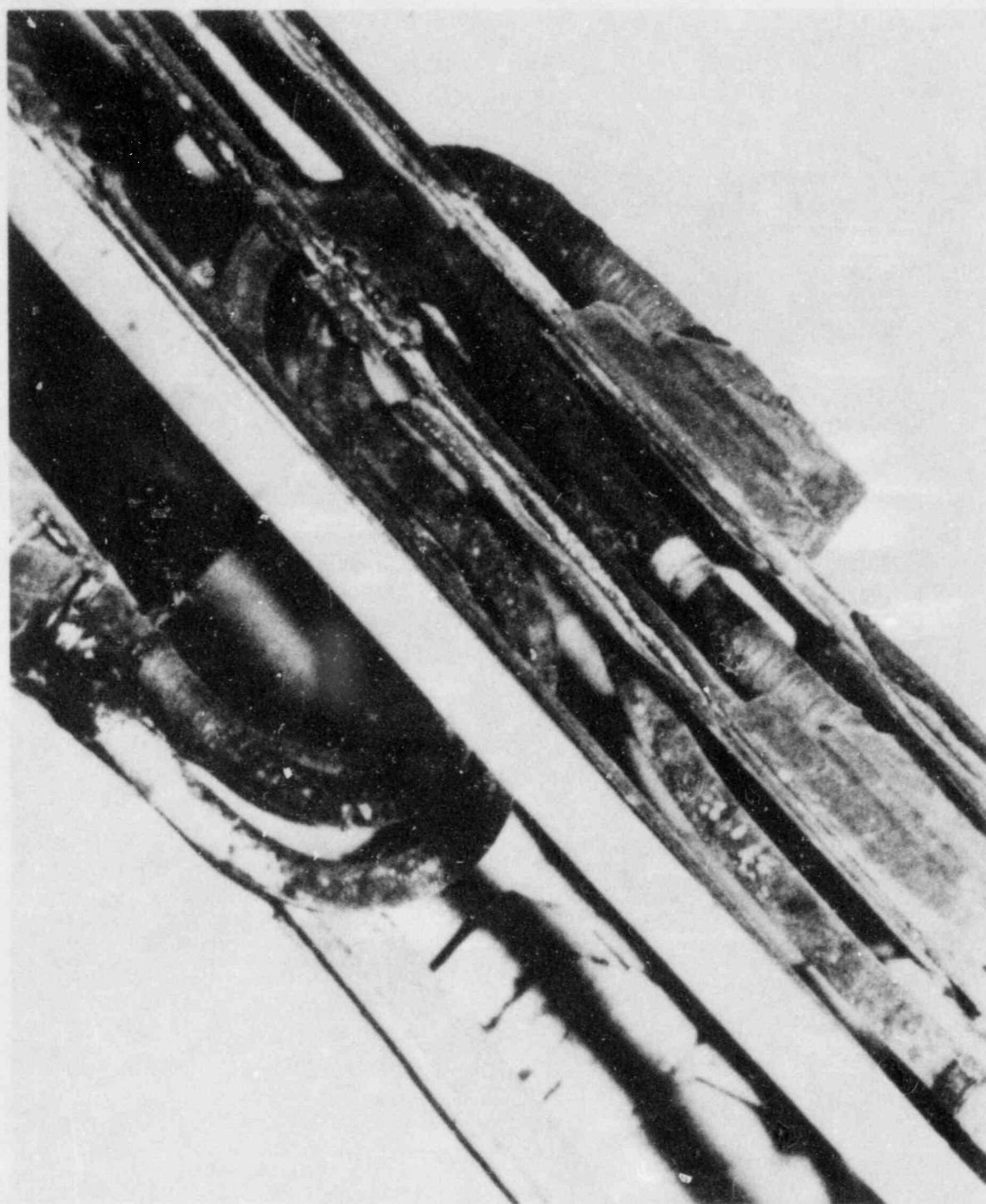


Figure 5. Connectors - main power cables to buss bars.

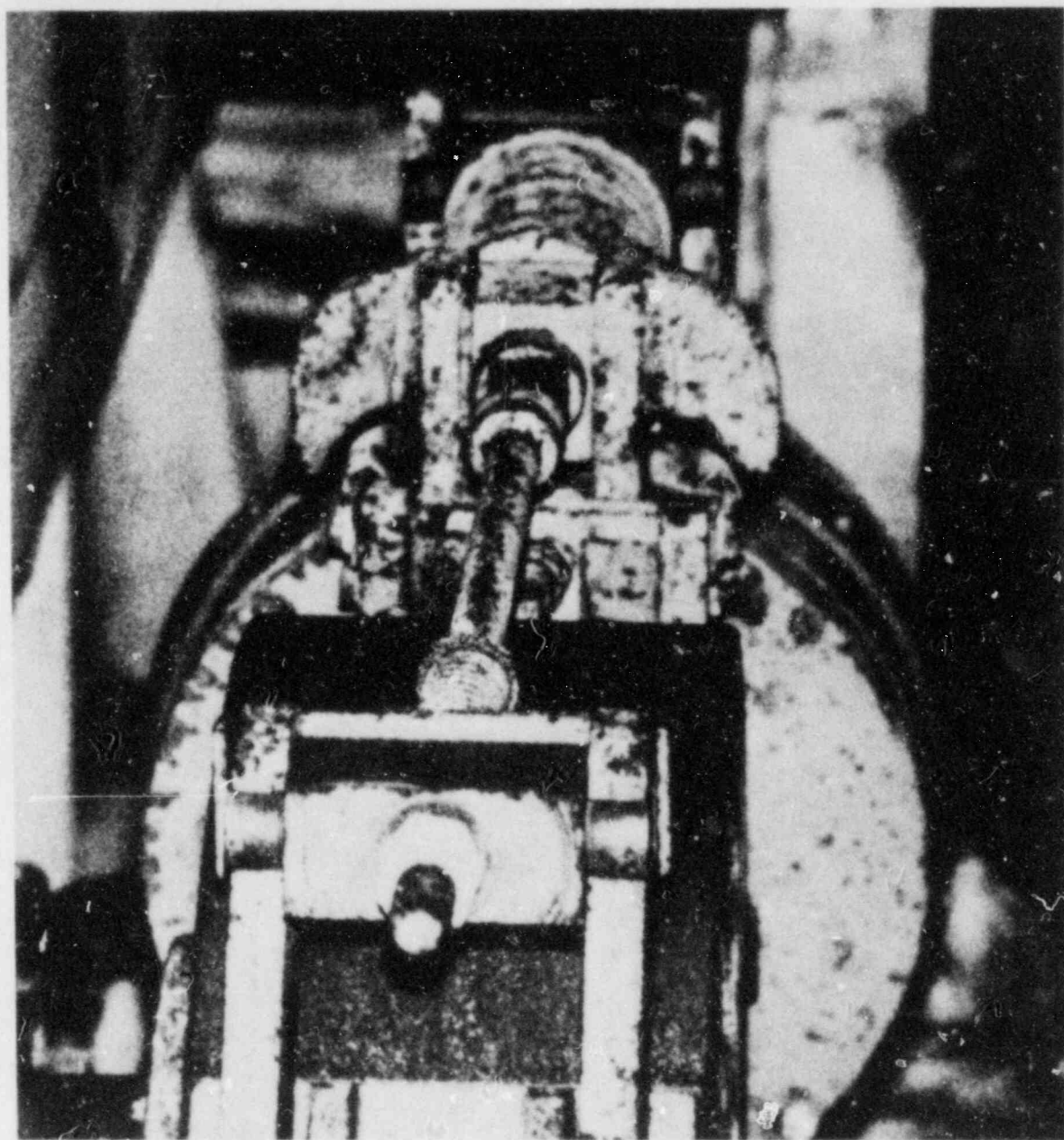


Figure 6. Damaged main hoist magnetic drum brake assembly.

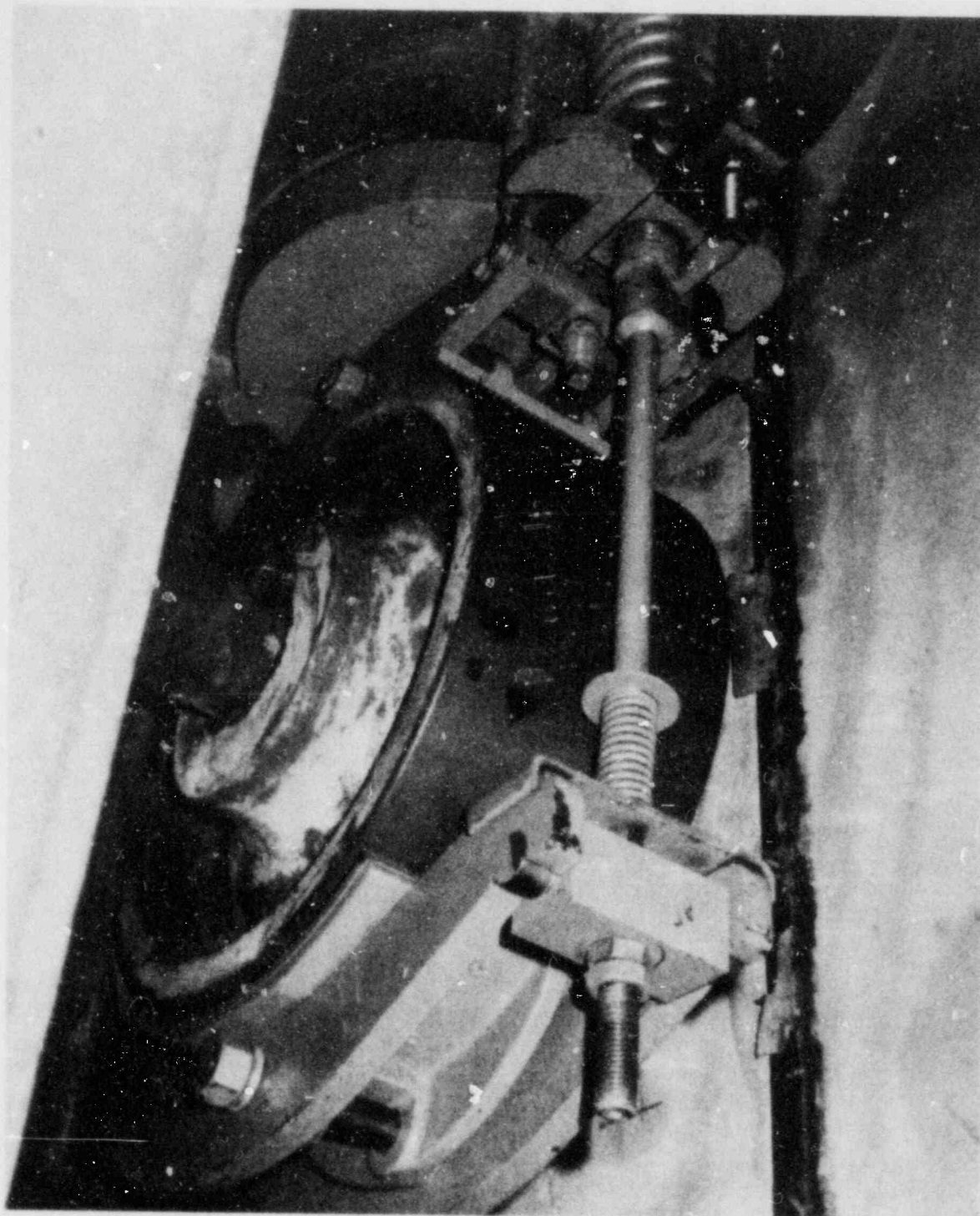


Figure 7. Refurbished main hoist magnetic drum brake assembly.

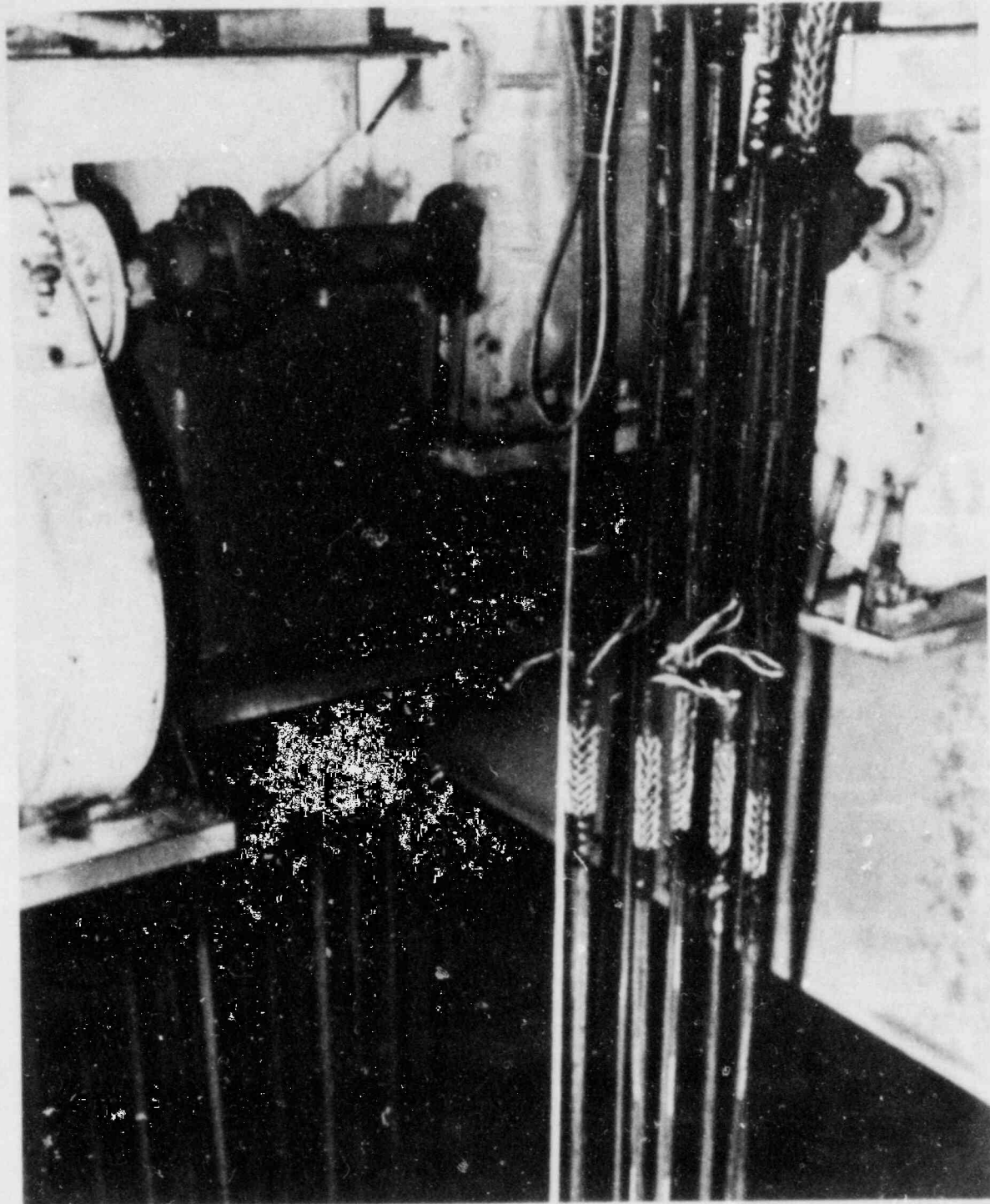


Figure 8. Replacement power cables on TMI-2 polar crane.

<b>NRC FORM 335</b> (7-77)		<b>U.S. NUCLEAR REGULATORY COMMISSION</b> <b>BIBLIOGRAPHIC DATA SHEET</b>		<b>1. REPORT NUMBER (Assigned by DDC)</b> NUREG/CR-3884	
<b>4. TITLE AND SUBTITLE (Add Volume No., if appropriate)</b> EVALUATION OF NUCLEAR FACILITY DECOMMISSIONING PROJECTS PROGRAM - THREE MILE ISLAND UNIT 2 POLAR CRANE RECOVERY				<b>2. (Leave blank)</b>	
<b>7. AUTHOR(S)</b> D. H. Doerge, R. L. Miller				<b>3. RECIPIENT'S ACCESSION NO.</b>	
<b>9. PERFORMING ORGANIZATION NAME AND MAILING ADDRESS (Include Zip Code)</b> UNC Nuclear Industries Decommissioning Programs Department Richland, WA 99352				<b>5. DATE REPORT COMPLETED</b> MONTH: July   YEAR: 1984	
<b>12. SPONSORING ORGANIZATION NAME AND MAILING ADDRESS (Include Zip Code)</b> Division of Engineering Technology Office of Nuclear Regulatory Research U.S. Nuclear Regulatory Commission Washington, D.C. 20555				<b>DATE REPORT ISSUED</b> MONTH: August   YEAR: 1984	
<b>13. TYPE OF REPORT</b> Technical				<b>PERIOD COVERED (Inclusive dates)</b> May 14, 1981 - December 19, 1983	
<b>15. SUPPLEMENTARY NOTES</b>				<b>14. (Leave blank)</b>	
<b>16. ABSTRACT (200 words or less)</b> <p>This document summarizes information concerning restoration of the Three Mile Island-Unit 2 Polar Crane to a fully operational condition following the loss of coolant accident experienced on March 28, 1979.</p> <p>The data collected from activity reports, reactor containment entry records and other sources were placed in a computerized information retrieval/manipulation system which permits extraction/manipulation of specific data which could be utilized in planning for recovery activities should a similar accident occur in a nuclear generating plant. The information is presented in both computer output form and a manually assembled summarization.</p> <p>This report contains only manpower requirements and radiation exposures actually incurred during recovery operations within the reactor containment and does not include support activities or costs.</p>					
<b>17. KEY WORDS AND DOCUMENT ANALYSIS</b> Decontamination Radiation Exposure Data Acquisition			<b>17a. DESCRIPTORS</b>		
<b>17b. IDENTIFIERS/OPEN-ENDED TERMS</b>					
<b>18. AVAILABILITY STATEMENT</b> Unlimited			<b>19. SECURITY CLASS (This report)</b> Unclassified		<b>21. NO. OF PAGES</b>
			<b>20. SECURITY CLASS (This page)</b> Unclassified		<b>22. PRICE</b> \$

UNITED STATES  
NUCLEAR REGULATORY COMMISSION  
WASHINGTON, D.C. 20555

OFFICIAL BUSINESS  
PENALTY FOR PRIVATE USE, \$300

FOURTH CLASS MAIL  
POSTAGE & FEES PAID  
USNRC  
WASH. D. C.  
PERMIT No. 662

NUREG/CR-3884

EVALUATION OF NUCLEAR FACILITY DECOMMISSIONING PROJECTS

120555078877 1 JAN 11 10  
US NRC  
ADM-DIV OF TIJC  
POLICY & PUB MGT BR-PDR NUREG  
W-501  
WASHINGTON DC 20555

AUGUST 1984