

*EM/MLA 7/9/84*PHILADELPHIA ELECTRIC COMPANY
LIMERICK GENERATING STATION
EMERGENCY PLAN IMPLEMENTING PROCEDUREEP-105 GENERAL EMERGENCY RESPONSE1.0 PURPOSE

The purpose of this procedure is to provide guidelines for the site response to a General Emergency.

2.0 RESPONSIBILITIES

- 2.1 Shift Supervision shall assume the role of Interim Emergency Director when a General Emergency occurs unless the Emergency Director is present and performs the necessary steps in this procedure.
- 2.2 The Station Superintendent or alternate shall assume the role of the Emergency Director, report to the Technical Support Center or control room and relieve the Interim Emergency Director.
- 2.3 The Site Emergency Coordinator shall report to the Emergency Operations Facility and perform the necessary steps in this procedure.

3.0 APPENDICES

- 3.1 EP-105-1 General Emergency Notification Message
- 3.2 EP-105-2 Emergency Exposure Guidelines
- 3.3 EP-105-3 General Emergency De-escalation Notification Message
- 3.4 EP-105-4 General Emergency Phone List (Initial Notification)
- 3.5 EP-105-5 General Emergency Phone List (Escalation or De-escalation)

CONTROLLED COPY
PROPRIETARY
WHEN RED

4.0 PREREQUISITES

4.1 EP-101 Classification of Emergencies, completed

5.0 SPECIAL EQUIPMENT

None

6.0 SYMPTOMS

None

7.0 ACTION LEVEL

7.1 This procedure shall be implemented when an event occurs that is classified as a General Emergency per EP-101 Classification of Emergencies.

8.0 PRECAUTIONS

8.1 Planned radiation exposures should be limited to the administrative guide levels in Appendix EP-105-2, Emergency Exposure Guidelines.

9.0 PROCEDURE

9.1 ACTIONS

9.1.1 (Interim) Emergency Director shall:

9.1.1.1 Verify the emergency classification as determined in EP-101, Classification of Emergencies unless determination has just been made.

9.1.1.2 Fill out Appendix EP-105-1, General Emergency Notification Message, and give it to the communicator.

- 9.1.1.3 Direct communicator to complete notification of the appropriate parties as specified in Appendix EP-105-4, General Emergency Phone List (Initial Notification) or Appendix EP-105-5, General Emergency Phone List (Escalation or De-escalation). The Communicator shall man the NRC RED telephone on a continuous basis until the NRC disconnects.
- 9.1.1.4 Contact the Station Superintendent and the Shift Technical Advisor, inform them of the situation, if not already done.
- 9.1.1.5 Implement EP-306, Evacuation of the Information Center, if not already done. Inform the staff of the wind direction, if there is an airborne release.
- 9.1.1.6 If there is a radiological release, implement EP-305, Site Evacuation.
- 9.1.1.7 If there has not been a radiological release,

- A. Evacuate all construction personnel by contacting Bechtel Safety Direct them to call for a "Total Project Evacuation" in accordance with Bechtel procedures.
- B. Contact Yoh Construction Security and inform them that a Total Project Evacuation of Bechtel Construction personnel is being implemented.

THIS WILL CALL FOR THE ASSEMBLY OF PERSONNEL AT THE UPPER PARKING LOT AND POST #3. IF IT IS DESIRED THAT THEY LEAVE THE SITE, INFORM BECHTEL COMMAND POSTS AT THE UPPER PARKING LOT.

- C. Select the type of accountability desired for personnel in the protected area and implement the required actions below:

1. Emergency Assembly Without Accountability.
 - Make the following announcement

"THIS (IS) (IS NOT) A DRILL. DESIGNATED EMERGENCY PERSONNEL REPORT TO ASSIGNED EMERGENCY RESPONSE FACILITIES. ALL OTHER PERSONNEL STAND BY FOR FURTHER ANNOUNCEMENT. THIS (IS) (IS NOT) A DRILL."
2. Emergency Assembly With Accountability
 - a. Select Unit 1 exit points as follows:

Day Shift - TSC and Administration Building
Afternoon Shift - Administration Building
Night Shift - Administration Building
 - b. Contact the (Interim) Security Team Leader. Inform him of the selected exit point(s), that emergency assembly with accountability is going to be implemented, and to activate the Security Team (EP-208) and to perform personnel accountability in accordance with EP-110, Personnel Assembly and Accountability.
 - c. Contact Yoh Construction Security and inform them that personnel leaving Unit 1 will be reassembling at the Personnel Processing Center (PPC).

"THIS (IS) (IS NOT) A DRILL,
THIS (IS) (IS NOT) A DRILL.
DESIGNATED EMERGENCY
PERSONNEL REPORT TO ASSIGNED
EMERGENCY RESPONSE
FACILITIES. ALL OTHER
PERSONNEL LEAVE THE PROTECTED
AREA IMMEDIATELY THROUGH THE
(NAME OF EXIT AREA OR AREAS)
AND REASSEMBLE AT THE
PERSONNEL PROCESSING CENTER.
THIS (IS) (IS NOT) A DRILL.
THIS (IS) (IS NOT) A DRILL."

- 9.1.1.8 If not already accomplished during an Alert or Site Emergency Response procedure, direct the Shift Clerk to activate the 60 minute call list using EP-291, Staffing Augmentation. If Shift Clerk is not available, this function may be assigned to any available individual.
- 9.1.1.9 Direct the activation of the Technical Support Center in accordance with EP-201, Technical Support Center (TSC) Activation, if not already activated.
- 9.1.1.10 Direct activation of the Emergency Operations Facility in accordance with EP-203, Emergency Operations Facility (EOF) Activation, if not already activated.
- 9.1.1.11 If the EOF has not been activated earlier, during an Alert or Site Emergency Response procedure, direct a communicator to call EOF personnel (directing them to report to the EOF) using EP-279, EOF Group Phone List.
- 9.1.1.12 Assign an Operations Support Center Coordinator (PO), if not already done, to direct available personnel to report to the Operations Support Center and to activate it in accordance with EP-202, Operations Support Center (OSC) Activation.

- 9.1.1.13 For samples, direct the Shift Chemistry Technician or Chemistry Sampling And Analysis Team Leader to implement EP-230 Chemistry Sampling And Analysis Team Activation.
- 9.1.1.14 For in-plant surveys, direct a Shift HP Technician or Personnel Safety Team Leader to implement EP-250, Personnel Safety Team Activation.
- 9.1.1.15 For field surveys when a release of gaseous radioactive material has occurred or is suspected, direct Dose Assessment Team Leader to implement EP-210, Dose Assessment Team Activation.
- 9.1.1.16 For a release at or greater than the Alert level in EP-101, Classification of Emergencies, or at the discretion of the Emergency Director, direct the Dose Assessment Team Leader to implement EP-210, Dose Assessment Team Activation. On an interim bases, direct the Shift Technical Advisor to perform dose projections using EP-316, Cumulative Population Dose Calculations for Airborne Releases-Manual Method or RMMS Computer and implement EP-317, Determination of Protective Action Recommendations.
- 9.1.1.17 For fire/damage repair direct the Maintenance Shift Assistant Foreman or Fire and Damage Team Leader to implement EP-260, Fire and Damage Team Activation and/or EP-261 Damage Repair Group.
- 9.1.1.18 For a liquid release, implement EP-312, Radioactive Liquid Release, if required.
- 9.1.1.19 For Security matters, contact Security Shift Supervision and direct implementation of EP-208, Security Team Activation, unless previously done.

9.2 FOLLOW-UP

- 9.2.1 (Interim) Emergency Director shall:
- 9.2.1.1 Verify that the Technical Support Center, Emergency Operations Facility and the Operations Support Center have been activated.
 - 9.2.1.2 Periodically evaluate the event classification in accordance with EP-101, Classification of Emergencies. If the conditions change, deescalate to an appropriate classification.
 - 9.2.1.3 If classification is de-escalated, fill out Appendix EP-105-3, General Emergency De-escalation Notification Message, and give it to the communicator and direct the communicator to perform notification of the appropriate parties listed in Appendix EP-105-5, General Emergency Phone List (Escalation or De-escalation).
 - 9.2.1.4 Obtain the following information as necessary to formulate further actions:
 - A. Security Status from Security Team Leader
 - B. Sample analysis from Shift Chemistry Technician or Chemistry Sampling and Analysis Team Leader
 - C. In-plant surveys from Shift HP Technician or Personnel Safety Team Leader
 - D. Field surveys from Shift HP Technician or Dose Assessment Team Leader
 - E. Dose projections and protective action recommendations from Shift Technical Advisor or Dose Assessment Team Leader

- F. Fire/Damage Repair status from the Maintenance Shift Assistant Foreman or Fire and Damage Team Leader
 - G. Notification results from Communicator
- 9.2.1.5 Discuss protective action recommendations with the Site Emergency Coordinator.
- 9.2.1.6 If not already performed, determine which additional support personnel are necessary for emergency functions and direct the Shift Clerk or other assigned person to contact those personnel.
- 9.2.1.7 Provide site personnel with public address (PA) speaker announcements for any major changes in plant emergency status, such as changing emergency action levels.
- 9.2.1.8 Evaluate the need and order evacuation of effected areas as necessary.
- Refer to the following procedures:
- EP-303 Local Evacuation
 - EP-305 Site Evacuation
 - EP 306 Evacuation of the Information Center
- 9.2.1.9 Perform the following until relieved by the Site Emergency Coordinator:
- A. Discuss protective action recommendations with the Dose Assessment Team Leader.
 - B. Provide protective action recommendations to the Pennsylvania Bureau of Radiation Protection.
 - C. Inform the various emergency response groups if the recovery phase organization is to be implemented.

9.2.2 The Communicator shall:

9.2.2.1 Inform the Emergency Director when appropriate notifications have been made and submit completed copy of Appendix EP-105-4 General Emergency Phone List (Initial Notification) or Appendix EP-105-5 (Escalation or De-escalation) for Emergency Director's signature.

10.0 REFERENCES

- 10.1 Limerick Generating Station Emergency Plan
- 10.2 NUREG 0654, Criteria for Preparation and Evaluation of Radiological Emergency Response Plans in Support of Nuclear Power Plants
- 10.3 EP-101 Classification of Emergencies
- 10.4 EP-201 Technical Support Center (TSC) Activation
- 10.5 EP-202 Operations Support Center (OSC) Activation
- 10.6 EP-203 Emergency Operations Facility (EOF) Activation
- 10.7 EP-291 Staffing Augmentation
- 10.8 EP-305 Site Evacuation
- 10.9 EP-306 Evacuation of the Information Center
- 10.10 EP-317 Determination of Protective Action Recommendations
- 10.11 EP-316 Cumulative Population Dose Calculations For Airborne Releases - Manual Method
- 10.12 EP-110 Personnel Assembly and Accountability
- 10.13 EP-208 Security Team Activation
- 10.14 EP-210 Dose Assessment Team Activation
- 10.15 EP-230 Chemistry Sampling and Analysis Team Activation
- 10.16 EP-250 Personnel Safety Team Activation

- | 10.17 EP-260 Fire and Damage Team Activation ..
- | 10.18 EP-261 Damage Repair Group
- | 10.19 EP-312 Radioactive Liquid Release
- | 10.20 EP-279 Emergency Operations Facility (EOF) Group
| Phone List

APPENDIX EP-105-1

GENERAL EMERGENCY NOTIFICATION MESSAGE

MESSAGE: This (is)(is not) a drill. This (is)(is not) a drill.

| This is the Limerick Generating Station calling to report a General
| Emergency. My name is _____, telephone
| _____. Limerick Generating Station is reporting a General
| Emergency declared at Unit No. _____. Time and date of General
| Emergency classification are

| _____,
| (24 Hr Clock Time)

| _____.
| (Date)

| The basic problem is _____.

| There (has been) (has not been) an (airborne) (liquid) radioactive
| release from the plant. The plant status is (stable) (improving)
| (degrading) (not known). The protective action recommended is

| * _____. The affected area is _____. This

| (is) (is not) a drill. This (is) (is not) a drill.

* If a General Emergency has been declared without prior emergency classification provide the recommendation to shelter within the 2 mile radius and 5 miles downwind of the plant. If PEMA & BRP are not available, make the recommendation directly to the counties.

APPENDIX EP-105-2

EMERGENCY EXPOSURE GUIDELINES

<u>Function</u>	<u>Projected Whole Body Dose</u>	<u>Thyroid Dose</u>	<u>Authorized By</u>
1. Life Saving and Reduction of Injury	75 REM*	375 REM	(Interim) Emergency** Director
2. Operation of Equipment to Mitigate an Emergency	25 REM*	125 REM	(Interim) Emergency** Director
3. Protection of Health and Safety of the Public	5 REM	25 REM	(Interim) Emergency** Director
4. Other Emergency Activities	10 CFR 20 limits	10 CFR 20 limits	(Interim) Emergency Director
5. Re-entry/Recovery Activities	Station Administrative Guidelines	Station Administrative Guidelines	N/A

* Reference: EPA-520/1-75-001 Table 2.1
 ** Such exposure shall be on a voluntary basis

APPENDIX EP-105-3

GENERAL EMERGENCY DE-ESCALATION NOTIFICATION MESSAGE

Message: This (is) (is not) a drill. This (is) (is not) a
drill. This is Limerick Generating Station calling to report a
change in emergency action level. The General Emergency has been
(de-escalated to) (An Unusual Event) (An Alert) (An Site
Emergency) (Terminated). Time and date are

_____, The plant status is (stable)
(24 Hr Clock Time) (Date)

(improving). My name is _____.

This (is) (is not) a drill. This (is) (is not) a drill.

APPENDIX EP-105-3
GENERAL EMERGENCY PHONE LIST
(INITIAL NOTIFICATION)

Time Initiated _____

Personnel/Agency To Be Notified	Phone Number	Time	Person Responding
a. Emergency Director G. M. Leitch	Home Office		
Alternate J. F. Franz	Home Office		
b. Lead Dispatcher	Office		
c. Montgomery County Emergency Management Agency			
d. Pennsylvania Emergency Management Agency			
e. Pennsylvania Bureau of Radiation Protection Harrisburg, PA			
f. Manager - Public Information Ronald Harper			
g. Director - Emergency Preparedness Roberta Kankus	Home Office		

APPENDIX EP-105-3
 GENERAL EMERGENCY PHONE LIST
 (INITIAL NOTIFICATION)

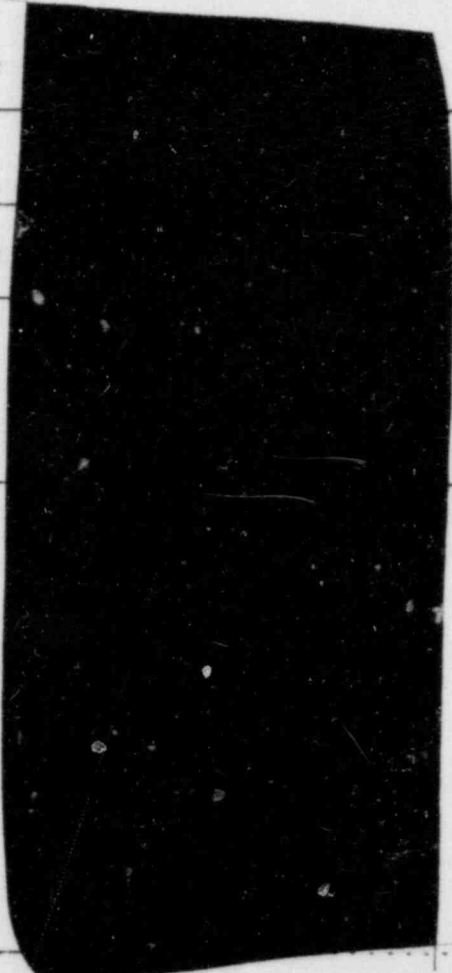
Time Initiated	Personnel/Agency To Be Notified	Phone Number	Time	Person Responding
	h. NRC Operations Center* Bethesda, MD			
	Make this call last and remain on telephone until NRC disconnects			
	*Person contacting NRC must be <u>Licensed Operator</u>			
	Agencies to be contacted after the above personnel/agencies have been notified			
	i. Herks County Emergency Management Agency			
	j. Chester County Emergency Services			
	Completed By: _____			
	Verified By: _____			

Time/Date _____

(INTERIM) EMERGENCY DIRECTOR

APPENDIX EP-105-5
GENERAL EMERGENCY PHONE LIST
(ESCALATION OR DE-ESCALATION)

Time Initiated _____

Personnel/Agency To Be Notified	Phone Number	Time	Person Responding
a. Emergency Director G. M. Leitch	Home Office		
Alternate J. F. Franz	Home Office		
b. Load Dispatcher	Office		
c. Pennsylvania Bureau of Radiation Protection Harrisburg, PA			
d. NRC Operations Center* Bethesda, MD			

Make this call last and remain on
telephone until NRC disconnects

*Person contacting NRC must be
Licensed Operator

APPENDIX EP-105-5
GENERAL EMERGENCY PHONE LIST
(ESCALATION OR DE-ESCALATION)

Time initiated _____

Personnel/Agency To Be Notified	Phone Number	Time	Person Responding
---------------------------------	--------------	------	-------------------

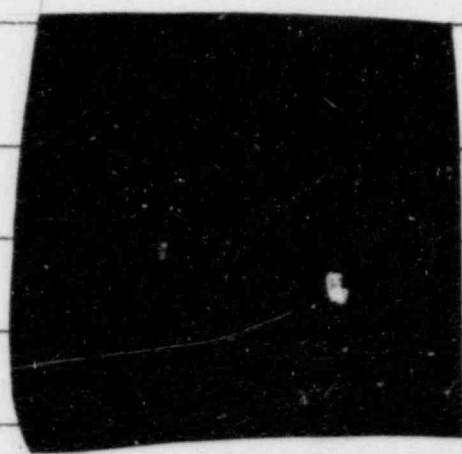
Agencies to be contacted after
the above personnel/agencies have
been notified

e. Montgomery County Office
of Emergency Preparedness
and Medical Services

f. Pennsylvania Emergency
Management Agency

g. Berks County Emergency
Management Agency

h. Chester County Emergency
Services



Completed By: _____ Time/Date _____

Verified By: _____
(INTERIM) EMERGENCY DIRECTOR

3842102770

PHILADELPHIA ELECTRIC COMPANY
ELECTRIC PRODUCTION DEPARTMENT
LIMERICK GENERATING STATION

May 14, 1984

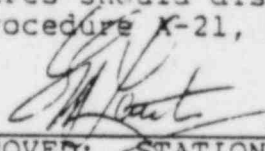
FROM: P. J. Duca
TO: G. M. Leitch
SUBJECT: CANCELLATION MEMORANDUM FOR EP-232
Reference: Limerick Administrative
Procedure A-21

EP-232 should be cancelled because the samples which would be taken, are from another sampling station. For this procedure to be useable it would require an engineering modification.

P. J. Duca 05/14/84

FROM: G. M. Leitch
TO: Holders of EP Procedures

This Cancellation Memorandum has been reviewed by PORC and is approved. All holders of EP procedures should discard EP-232. In accordance with Administrative Procedure X-21, procedure number EP-232 will not be re-used.


APPROVED: STATION SUPERINTENDENT

**CONTROLLED
COPY
VALID ONLY WHEN RED**

PHILADELPHIA ELECTRIC COMPANY
LIMERICK GENERATING STATION
EMERGENCY PLAN IMPLEMENTING PROCEDURE*J. M. Litch 7/9/84*EP-304 PARTIAL PLANT EVACUATION1.0 PURPOSE

The purpose of this procedure is to define the actions to be performed in the event that a partial plant evacuation is required.

2.0 RESPONSIBILITIES

2.1 Personnel in affected areas requiring evacuation shall evacuate the area and notify the control room.

2.2 The (Interim) Emergency Director shall direct the partial plant evacuation by performing the appropriate steps in this procedure.

3.0 APPENDICES

None

4.0 PREREQUISITES

None

5.0 SPECIAL EQUIPMENT

None

CONTROLLED**COPY****VALID ONLY WHEN RED****PROPRIETARY**

6.0 SYMPTOMS

- 6.1 An increase in the area radiation monitors or continuous air monitor indications to greater than alarm levels in two or more large operating areas.
- 6.2 Radiation levels greater than 100 mR/hr within two or more large operating areas which normally experience less than 10 mR/hr.
- 6.3 Airborne radioactivity greater than 3N8 uCi/cc for an unidentified isotope, (except for noble gas activity) or 10 MPC for identified isotopes in restricted areas in two or more large operating areas.
- 6.4 Release, leakage or spill of a toxic reagent such that the concentration of chemical vapors makes the areas uninhabitable in two or more large operating areas.
- 6.5 Other hazards such as flood or fire affecting two or more large operating areas

7.0 ACTION LEVEL

This procedure shall be implemented by the (Interim) Emergency Director when the symptoms of section 6.0 of this procedure occur. Two or more large operating areas is defined as two or more elevations in a single enclosure or one elevation in two or more enclosures.

8.0 PRECAUTIONS

None

9.0 PROCEDURE

9.1 Actions

- 9.1.1 Personnel in the affected area not directly involved in controlling the hazard shall evacuate to a safe area. Notify the control room of the type and location of the hazard.

- 9.1.2 The (Interim) Emergency Director or Shift Supervision shall:
- 9.1.2.1 Upon receiving information from personnel in the field about a hazardous condition or from Control Room indications, evacuate the affected areas by making the following announcement:

"This (is) (is not) a drill. This (is) (is not) a drill. This is a Partial Plant Evacuation . Evacuate (locations of hazard) and assemble at (location of assembly area). This (is) (is not) a drill. This (is) (is not) a drill."

- 9.1.2.2 If necessary, account for personnel in the affected area using means such as security computer, RWP's, etc.
- 9.1.2.3 If the hazard has a potential to spread to Unit 2, evacuate construction personnel by notifying Bechtel Safety or Bechtel Security. Direct them to call for either:

PARTIAL EVACUATION - ASSEMBLY AREA
between the Main Construction Office
and the Change House.

TOTAL PROJECT EVACUATION - ASSEMBLY AREAS
at the upper parking lot and
Post #3.

9.2 Follow-Up

- 9.2.1 The (Interim) Emergency Director shall:
- 9.2.1.1 Evaluate the situation and if conditions worsen call for an evacuation of the site in accordance with procedure EP-305 Site Evacuation.
- 9.2.1.2 If the hazard can be contained and when conditions permit, perform recovery/cleanup operations in accordance with EP-401 Entry for Emergency Repair and Operations.

10.0 REFERENCES

- 10.1 Limerick Generating Station Emergency Plan
- 10.2 NUREG 0654 Criteria for Preparation and
Rev. 1 Evaluation of Radiological
Emergency Response Plans
and Preparedness in Support
of Nuclear Power Plants
- 10.3 EP-110 Personnel Assembly and Accountability
- 10.4 EP-305 Site Evacuation
- 10.5 Bechtel Evacuation Procedures
- 10.6 EP-401 Entry for Emergency Repair and Operations

EMERGENCY PLAN PROCEDURE INDEX

PROCEDURE NUMBER	REV. NO.	TITLE	DATE SIGNED BY SUPER.	DATE OF LAST PERIODIC REVIEW
EP-101	1	Classification of Emergencies	06/08/84	
EP-102	3	Unusual Event Response	06/08/84	
EP-103	3	Alert Response	06/08/84	
EP-104	3	Site Emergency Response	06/08/84	
EP-105	3	General Emergency Response	07/09/84	
EP-106	1	Written Summary Notification	06/08/84	
EP-110	2	Personnel Assembly and Accountability	06/08/84	
EP-120	1	Site Emergency Coordinator	06/08/84	
EP-201	1	Technical Support Center (TSC) Activation	06/08/84	
EP-202	1	Operations Support Center (OSC) Activation	06/08/84	
EP-203	1	Emergency Operations Facility (EOF) Activation	06/08/84	
EP-208	2	Security Team Activation	06/08/84	
EP-210	1	Dose Assessment Team	06/08/84	
EP-220		CANCELLED		
EP-221	1	Personnel Dosimetry, Bioassay, and Respiratory Protection Group	06/08/84	
EP-222	1	Field Survey Group	06/08/84	
EP-230	2	Chemistry Sampling and Analysis Team Activation	06/08/84	
EP-231	2	Operation of Post-Accident Sampling Systems (PASS)	06/08/84	
EP-232		CANCELLED		
EP-233	2	Retrieving and Changing Sample Filters and Cartridges from the Containment Leak Detector During Emergencies	06/08/84	

CONTROLLED

COPY

VALID ONLY WHEN RED

EMERGENCY PLAN PROCEDURE INDEX

PROCEDURE NUMBER	REV. NO.	TITLE	DATE SIGNED BY SUPER.	DATE OF LAST PERIODIC REVIEW
EP-234	2	Obtaining Containment Gas Samples from the Containment Leak Detector During Emergencies	06/08/84	
EP-235	2	Obtaining Reactor Water Samples from Sample Sinks Following Accident Conditions	06/08/84	
EP-236	1	Obtaining Cooling Tower Blowdown Line Water Samples Following Radioactive Liquid Release after Accident Conditions	06/08/84	
EP-237	2	Obtaining the Iodine/Particulate and/or Gas Samples from the North Vent Wide Range Gas Monitor (WRGM)	06/08/84	
EP-238	2	Obtaining Liquid Radwaste Samples from Radwaste Sample Sink Following Accident Conditions	06/08/84	
EP-240	2	Obtaining Off-Gas Samples from the Air Ejector/Holdup Pipe Discharge Sample Station	06/08/84	
EP-241	2	Sample Preparation and Handling of Highly Radioactive Liquid Samples	06/08/84	
EP-242	2	Sample Preparation and Handling of Highly Radioactive Particulate Filters and Iodine Cartridges	06/08/84	
EP-243	2	Sample Preparation and Handling of Highly Radioactive Gas Samples	06/08/84	
EP-244	0	Offsite Analysis of High Activity Samples	06/08/84	
EP-250	1	Personnel Safety Team Activation	06/08/84	
EP-251	1	Plant Survey Group	06/08/84	

EMERGENCY PLAN PROCEDURE INDEX

PROCEDURE NUMBER	REV. NO.	TITLE	DATE SIGNED BY SUPER.	DATE OF LAST PERIODIC REVIEW
EP-252	1	Search and Rescue/First Aid	06/08/84	
EP-254	1	Vehicle and Evacuee Control Group	06/08/84	
EP-255	1	Vehicle Decontamination	06/08/84	
EP-260	1	Fire and Damage Team Activation	06/08/84	
EP-261	1	Damage Repair Group	06/08/84	
EP-272	1	Philadelphia Electric Company Officials	06/08/84	
EP-273	1	Limerick Station Supervision Call List	06/08/84	
EP-275		CANCELLED		
EP-276	1	Fire and Damage Team Phone List	06/08/84	
EP-277	1	Personnel Safety Team Phone List	06/08/84	
EP-278	0	Security Team Phone List	12/27/83	
EP-279	1	Emergency Operations Facility (EOF) Group Phone List	06/08/84	
EP-280	1	Technical Support Center Phone List	06/08/84	
EP-282	1	Government and Emergency Management Agencies	06/08/84	
EP-284	1	Company Consultants and Contractors	06/08/84	
EP-287	1	Nearby Public and Industrial Users of Downstream Water	06/08/84	
EP-291	1	Staffing Augmentation	06/08/84	
EP-292	1	Chemistry Sampling and Analysis Team Phone List	06/08/84	
EP-294	1	Dose Assessment Team Phone List	06/08/84	
EP-301	0	Operating the Evacuation Alarm and River Warning System	11/11/83	
EP-303	2	Local Evacuation	04/02/84	

EMERGENCY PLAN PROCEDURE INDEX

PROCEDURE NUMBER	REV. NO.	TITLE	DATE SIGNED BY SUPER.	DATE OF LAST PERIODIC REVIEW
EP-304	2	Partial Plant Evacuation	07/09/84	
EP-305	1	Site Evacuation	06/08/84	
EP-306	0	Evacuation of the Information Center	12/27/83	
EP-307	1	Reception and Orientation of Support Personnel	06/08/84	
EP-312	0	Radioactive Liquid Release	11/30/83	
EP-313	1	Distribution of Thyroid Blocking Tablets	06/08/84	
EP-316	0	Cumulative Population Dose Calculations for Airborne Releases - Manual Method	12/23/83	
EP-317	0	Determination of Protective Action Recommendations	12/27/83	
EP-318	0	Liquid Release Dose Calculations Method for Drinking Water	11/30/83	
EP-319	0	Fish Ingestion Pathway Dose Calculation	11/30/83	
EP-325	0	Use of Containment Radiation Monitors to Estimate Release Source Term	12/29/83	
EP-330	1	Emergency Response Facility Habitability	06/08/84	
EP-401	1	Entry for Emergency Repair and Operations	06/08/84	
EP-410	1	Recovery Phase Implementation	06/08/84	
EP-500	1	Review and Revision of Emergency Plan	06/08/84	