

OPERATING DATA REPORT

DOCKET NO. 50-302
 DATE 8/1/84
 COMPLETED BY D. Graham
 TELEPHONE (904) 795-3802

OPERATING STATUS

1. Unit Name: Crystal River Unit 3
2. Reporting Period: 7/1/84 - 7/31/84
3. Licensed Thermal Power (MWt): 2544
4. Nameplate Rating (Gross MWe): 890
5. Design Electrical Rating (Net MWe): 825
6. Maximum Dependable Capacity (Gross MWe): 860
7. Maximum Dependable Capacity (Net MWe): 821
8. If Changes Occur in Capacity Ratings (Items Number 3 Through 7) Since Last Report, Give Reasons:
N/A

Notes

9. Power Level To Which Restricted, If Any (Net MWe): N/A
10. Reasons For Restrictions, If Any: N/A

	This Month	Yr.-to-Date	Cumulative
11. Hours In Reporting Period	<u>744</u>	<u>5111</u>	<u>64751</u>
12. Number Of Hours Reactor Was Critical	<u>734.9</u>	<u>4796</u>	<u>42365.2</u>
13. Reactor Reserve Shutdown Hours	<u>0</u>	<u>0</u>	<u>1280.3</u>
14. Hours Generator On-Line	<u>731.7</u>	<u>4754.3</u>	<u>41373.3</u>
15. Unit Reserve Shutdown Hours	<u>0</u>	<u>0</u>	<u>0</u>
16. Gross Thermal Energy Generated (MWH)	<u>1786676</u>	<u>11436851</u>	<u>93401186</u>
17. Gross Electrical Energy Generated (MWH)	<u>610923</u>	<u>3948530</u>	<u>31875266</u>
18. Net Electrical Energy Generated (MWH)	<u>582782</u>	<u>3764555</u>	<u>30281638</u>
19. Unit Service Factor	<u>98.3%</u>	<u>93.0%</u>	<u>63.9%</u>
20. Unit Availability Factor	<u>98.3%</u>	<u>93.0%</u>	<u>63.9%</u>
21. Unit Capacity Factor (Using MDC Net)	<u>95.4%</u>	<u>89.7%</u>	<u>59.0%</u>
22. Unit Capacity Factor (Using DER Net)	<u>94.9%</u>	<u>89.3%</u>	<u>56.7%</u>
23. Unit Forced Outage Rate	<u>0%</u>	<u>2.2%</u>	<u>21.6%</u>
24. Shutdowns Scheduled Over Next 6 Months (Type, Date, and Duration of Each): <u>None</u>			

25. If Shut Down At End Of Report Period, Estimated Date of Startup: N/A
26. Units In Test Status (Prior to Commercial Operation):

INITIAL CRITICALITY	_____	<u>1/14/77</u>
INITIAL ELECTRICITY	_____	<u>1/30/77</u>
COMMERCIAL OPERATION	_____	<u>3/13/77</u>

IE24

(9/77) 1/1

AVERAGE DAILY UNIT POWER LEVEL

DOCKET NO. 50-302

UNIT FLCRP-3

DATE 8/1/84

COMPLETED BY D. Graham

TELEPHONE (904) 795-3802

MONTH July 1984

DAY	AVERAGE DAILY POWER LEVEL (MWe-Net)	DAY	AVERAGE DAILY POWER LEVEL (MWe-Net)
1	<u>590</u>	17	<u>809</u>
2	<u>722</u>	18	<u>814</u>
3	<u>834</u>	19	<u>803</u>
4	<u>828</u>	20	<u>810</u>
5	<u>826</u>	21	<u>280</u>
6	<u>816</u>	22	<u>815</u>
7	<u>821</u>	23	<u>812</u>
8	<u>818</u>	24	<u>819</u>
9	<u>835</u>	25	<u>809</u>
10	<u>798</u>	26	<u>802</u>
11	<u>814</u>	27	<u>805</u>
12	<u>819</u>	28	<u>798</u>
13	<u>816</u>	29	<u>811</u>
14	<u>804</u>	30	<u>734</u>
15	<u>814</u>	31	<u>815</u>
16	<u>791</u>		

INSTRUCTIONS

On this format, list the average daily unit power level in MWe-Net for each day in the reporting month. Compute to the nearest whole megawatt.

UNIT SHUTDOWNS AND POWER REDUCTIONS

DOCKET NO. 50-302
 UNIT NAME FLCRP-3
 DATE 8/1/84
 COMPLETED BY S.A. Stewart
 TELEPHONE (904) 795-3802

REPORT MONTH 7/84

No.	Date	Type ¹	Duration (Hours)	Reason ²	Method of Shutting Down Reactor ³	Licensee Event Report #	System Code ⁴	Component Code ⁵	Cause & Corrective Action to Prevent Recurrence
84-26	840701	S	0	B	4	N/A	HC	HTEXCH	Reduced power to clean and shoot condenser tubes.
84-27	840721	S	12.3	A	1	N/A	CB	MOTORX	Shutdown briefly to add oil to the "C" reactor coolant pump oil reservoir.

¹
 F: Forced
 S: Scheduled

²
 Reason:
 A-Equipment Failure (Explain)
 B-Maintenance or Test
 C-Refueling
 D-Regulatory Restriction
 E-Operator Training & License Examination
 F-Administrative
 G-Operational Error (Explain)
 H-Other (Explain)

³
 Method:
 1-Manual
 2-Manual Scram.
 3-Automatic Scram.
 4-Other (Explain)

⁴
 Exhibit G - Instructions for Preparation of Data Entry Sheets for Licensee Event Report (LER) File (NUREG-0161)

⁵
 Exhibit I - Same Source

MONTHLY OPERATIONAL SUMMARY STATEMENT

DOCKET NO. 50-302

UNIT FLCRP-3

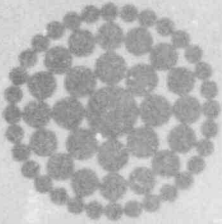
DATE 8/1/84

COMPLETED BY S.A. Stewart

TELEPHONE (904) 795-3802

MONTH July 1984

SUMMARY STATEMENT: The plant was shutdown once during the month to add oil to a reactor coolant pump. Power was reduced to clean condenser tubes and to locate and plug a leaking condenser tube. Plant power output was reduced approximately 3% during the month due to high OTSG levels caused by fouling.



**Florida
Power**
CORPORATION

August 8, 1984
3F0884-04

Mr. Richard C. DeYoung, Director
Office of Inspection and Enforcement
U.S. Nuclear Regulatory Commission
Attn: Document Control Desk
Washington, DC 20555

Subject: Crystal River Unit 3
Docket No. 50-302
Operating License No. DPR-72
Monthly Operating Report

Dear Sir:

Attached are twelve (12) copies of the Crystal River Unit 3 July 1984 Monthly Operating Report. This report is submitted in accordance with Technical Specification 6.9.1.6.

Sincerely,

G. R. Westafer
Manager, Nuclear Operations
Licensing and Fuel Management

DVH/feb

Attachments

cc: Mr. J. P. O'Reilly
Regional Administrator, Region II
Office of Inspection & Enforcement
U.S. Nuclear Regulatory Commission
101 Marietta Street N.W., Suite 2900
Atlanta, GA 30323

IE24
11