

Bechtel Incorporated (D.C.)

020673

Interoffice Memorandum

To S. Afifi (Ann Arbor)

Date April 25, 1979

Subject Underpinning

From G. Marr

Of Engineering

Copies to

At OCCB - 8th Floor
600 Fifth Street, N.W.
Washington, D. C. 20001

Ken Ware had asked whether I can furnish you some underpinning procedures & details used on the Washington Metro project.

Enclosed are prints of the general procedures and details a contractor had employed successfully in underpinning the Fine Arts Building. I hope this is helpful to you.

G. Marr
Engineering Manager

GM:hog
Enclosure

GEOTECH ANN ARBOR DISTRIBUTION			
DISC	ACT	DATE	BY
MGR		1	<i>[Signature]</i>
ADMIN			
DRAFT			
SOILS	XC 2		<i>[Signature]</i>
JDW			
AA	XC		
KW	XC		
PROJECT			
PROJECT	XC		1330
JOB	7220	FILE	3410
REC'D	ANN ARBOR		

8408140065 840718
PDR FOIA
RICE84-96 PDR

020673

- 1 ALL MATERIALS SHALL BE SUBJECT TO ANALYSIS TO DETERMINE THE PROPERTIES AND CHARACTERISTICS TO BE USED. ALL MATERIALS SHALL BE SUBJECT TO ANALYSIS TO DETERMINE THE PROPERTIES AND CHARACTERISTICS TO BE USED.
- 2 CONCRETE SHALL BE MIXED WITH A MAXIMUM OF 40% SAND. THE MIXTURE SHALL BE MIXED WITH A MAXIMUM OF 40% SAND. THE MIXTURE SHALL BE MIXED WITH A MAXIMUM OF 40% SAND.
- 3 CONCRETE SHALL BE MIXED WITH A MAXIMUM OF 40% SAND. THE MIXTURE SHALL BE MIXED WITH A MAXIMUM OF 40% SAND. THE MIXTURE SHALL BE MIXED WITH A MAXIMUM OF 40% SAND.
- 4 CONCRETE SHALL BE MIXED WITH A MAXIMUM OF 40% SAND. THE MIXTURE SHALL BE MIXED WITH A MAXIMUM OF 40% SAND. THE MIXTURE SHALL BE MIXED WITH A MAXIMUM OF 40% SAND.
- 5 CONCRETE SHALL BE MIXED WITH A MAXIMUM OF 40% SAND. THE MIXTURE SHALL BE MIXED WITH A MAXIMUM OF 40% SAND. THE MIXTURE SHALL BE MIXED WITH A MAXIMUM OF 40% SAND.
- 6 CONCRETE SHALL BE MIXED WITH A MAXIMUM OF 40% SAND. THE MIXTURE SHALL BE MIXED WITH A MAXIMUM OF 40% SAND. THE MIXTURE SHALL BE MIXED WITH A MAXIMUM OF 40% SAND.
- 7 CONCRETE SHALL BE MIXED WITH A MAXIMUM OF 40% SAND. THE MIXTURE SHALL BE MIXED WITH A MAXIMUM OF 40% SAND. THE MIXTURE SHALL BE MIXED WITH A MAXIMUM OF 40% SAND.
- 8 CONCRETE SHALL BE MIXED WITH A MAXIMUM OF 40% SAND. THE MIXTURE SHALL BE MIXED WITH A MAXIMUM OF 40% SAND. THE MIXTURE SHALL BE MIXED WITH A MAXIMUM OF 40% SAND.
- 9 CONCRETE SHALL BE MIXED WITH A MAXIMUM OF 40% SAND. THE MIXTURE SHALL BE MIXED WITH A MAXIMUM OF 40% SAND. THE MIXTURE SHALL BE MIXED WITH A MAXIMUM OF 40% SAND.
- 10 CONCRETE SHALL BE MIXED WITH A MAXIMUM OF 40% SAND. THE MIXTURE SHALL BE MIXED WITH A MAXIMUM OF 40% SAND. THE MIXTURE SHALL BE MIXED WITH A MAXIMUM OF 40% SAND.

DRAWINGS INDEX

NO.	DESCRIPTION	REV.	DATE
1	GENERAL NOTES	1	11/11/58
2	GENERAL NOTES	1	11/11/58
3	GENERAL NOTES	1	11/11/58
4	GENERAL NOTES	1	11/11/58
5	GENERAL NOTES	1	11/11/58
6	GENERAL NOTES	1	11/11/58
7	GENERAL NOTES	1	11/11/58
8	GENERAL NOTES	1	11/11/58
9	GENERAL NOTES	1	11/11/58
10	GENERAL NOTES	1	11/11/58
11	GENERAL NOTES	1	11/11/58
12	GENERAL NOTES	1	11/11/58
13	GENERAL NOTES	1	11/11/58
14	GENERAL NOTES	1	11/11/58
15	GENERAL NOTES	1	11/11/58
16	GENERAL NOTES	1	11/11/58
17	GENERAL NOTES	1	11/11/58
18	GENERAL NOTES	1	11/11/58
19	GENERAL NOTES	1	11/11/58
20	GENERAL NOTES	1	11/11/58
21	GENERAL NOTES	1	11/11/58
22	GENERAL NOTES	1	11/11/58
23	GENERAL NOTES	1	11/11/58
24	GENERAL NOTES	1	11/11/58
25	GENERAL NOTES	1	11/11/58
26	GENERAL NOTES	1	11/11/58
27	GENERAL NOTES	1	11/11/58
28	GENERAL NOTES	1	11/11/58
29	GENERAL NOTES	1	11/11/58
30	GENERAL NOTES	1	11/11/58
31	GENERAL NOTES	1	11/11/58
32	GENERAL NOTES	1	11/11/58
33	GENERAL NOTES	1	11/11/58
34	GENERAL NOTES	1	11/11/58
35	GENERAL NOTES	1	11/11/58
36	GENERAL NOTES	1	11/11/58
37	GENERAL NOTES	1	11/11/58
38	GENERAL NOTES	1	11/11/58
39	GENERAL NOTES	1	11/11/58
40	GENERAL NOTES	1	11/11/58
41	GENERAL NOTES	1	11/11/58
42	GENERAL NOTES	1	11/11/58
43	GENERAL NOTES	1	11/11/58
44	GENERAL NOTES	1	11/11/58
45	GENERAL NOTES	1	11/11/58
46	GENERAL NOTES	1	11/11/58
47	GENERAL NOTES	1	11/11/58
48	GENERAL NOTES	1	11/11/58
49	GENERAL NOTES	1	11/11/58
50	GENERAL NOTES	1	11/11/58

MERCENTIME
CORPORATION
ENGINEERS-ARCHITECTS

111 N. W. 11th St.
MIAMI, FLORIDA

CP 10011 / 01-01-E

MERCENTIME CORPORATION
ENGINEERS-ARCHITECTS

111 N. W. 11th St.
MIAMI, FLORIDA

GENERAL NOTES - I

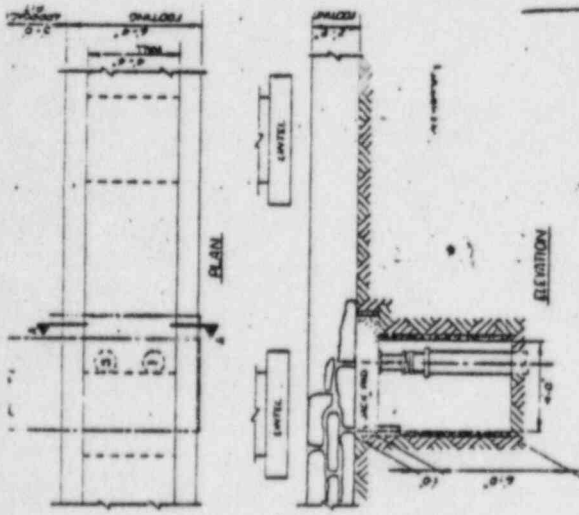


APPROVED

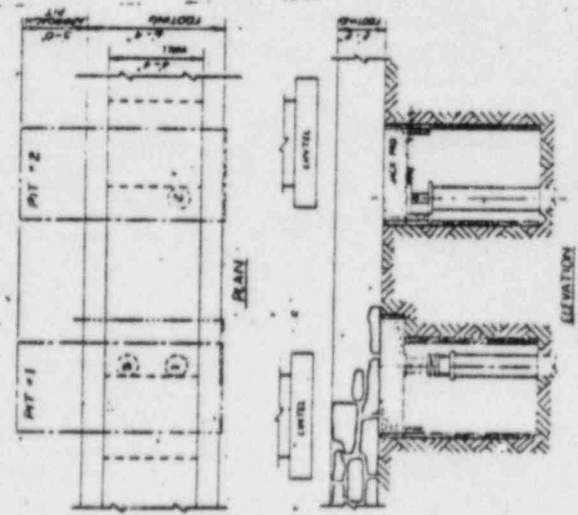
FOR THE CONTRACTOR

BY _____

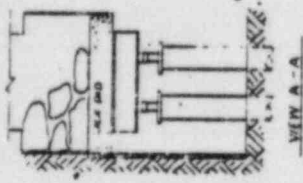
11/11/58



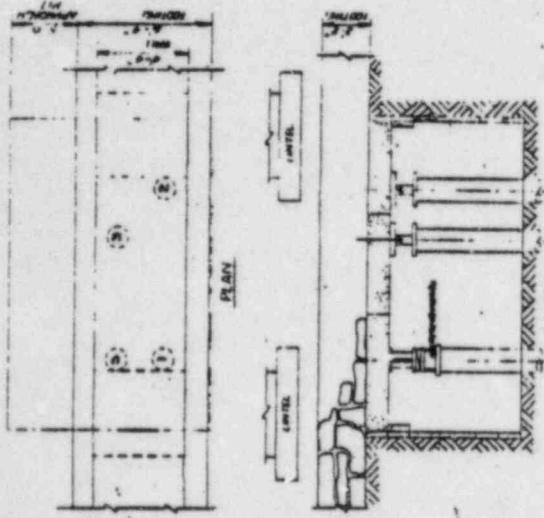
STAGE I OF II



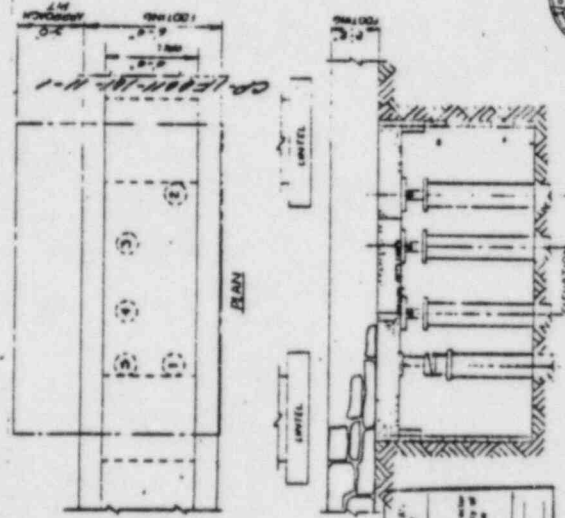
STAGE II OF II



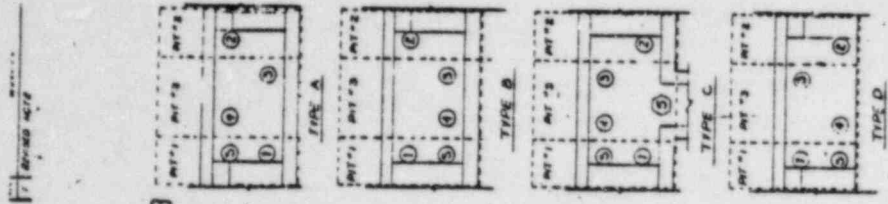
VIEW A-A



STAGE III OF II



STAGE IV OF II



SCALE 1/4" = 1'-0"

020673

CP10011 101 JL-L

MERGENTHIME COR
ENGINEERS CONTRACTORS
NEW YORK

FINE ARTS BLDG - UNDER
TYPICAL TRANSVERSE SECTION
1/16" = 1'-0" SCALE
JULY 1917

MATERIALS APPROVED
DATE 10/11/17 BY 1117

APPROVED

FOR THE CONTRACTOR
BY THE ARCHITECT

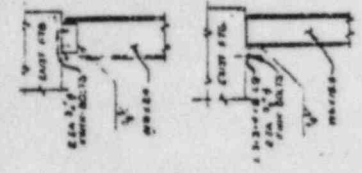
10/11/17

PIT PLAN-TYPE
SCALE 1/8" = 1'-0"

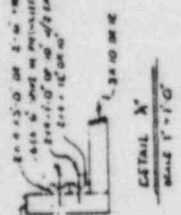
NOTE: 3 DIMENSIONS SHOWN ARE FOR THE PITS

020673

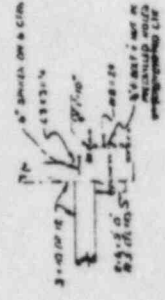
3'-0" x 3'-0" OR 2'-0" x 2'-0" READING UNITS ONLY
ALL DIMENSIONS IN PARENTHESIS ARE TO BE
3'-0" x 3'-0" OR 2'-0" x 2'-0" UNLESS OTHERWISE NOTED



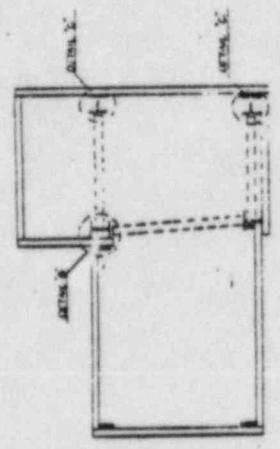
DETAIL X
SCALE 1/4" = 1'-0"



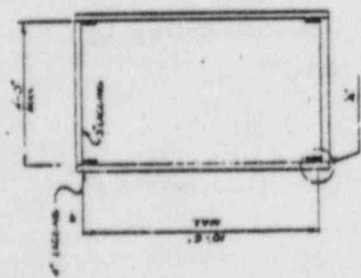
DETAIL X
SCALE 1/4" = 1'-0"



DETAIL Y
SCALE 1/4" = 1'-0"

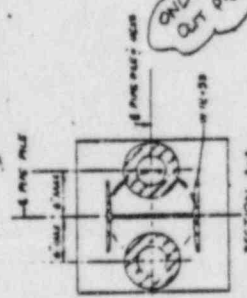


DETAIL X
SCALE 1/4" = 1'-0"

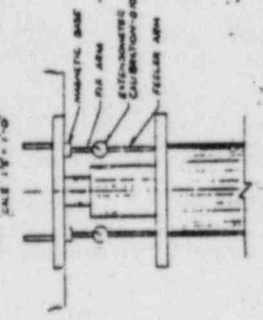


PILE PLAN - TYPICAL
NO SCALE

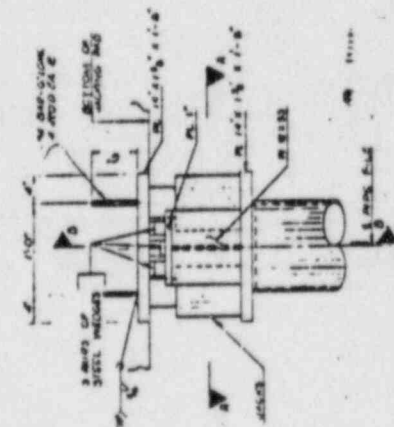
DRIFT PIT PLAN
NO SCALE



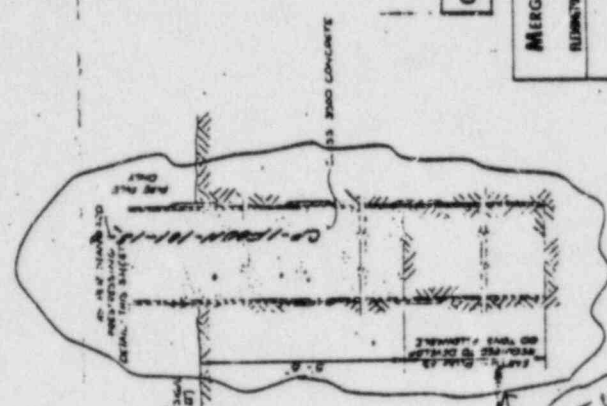
SECTION A-A
SCALE 1/4" = 1'-0"



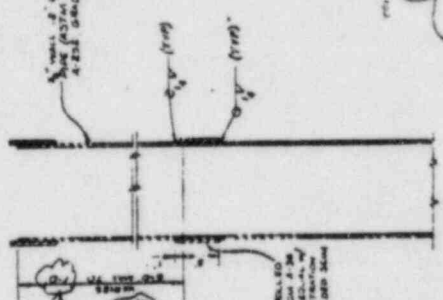
SECTION B-B
SCALE 1/4" = 1'-0"



PILE PRESTRESSING BEARING
SCALE 1/4" = 1'-0"



STUB PILE DETAIL
SCALE 1/4" = 1'-0"



JACK PILE AND BRIDGE DETAIL
SCALE 1/4" = 1'-0"

NOT REVIEWED FOR
AS 16 MAY 1962

MATERIALS SPECIFICATIONS
ALL DIMENSIONS IN PARENTHESIS ARE TO BE
3'-0" x 3'-0" OR 2'-0" x 2'-0" UNLESS OTHERWISE NOTED
APPROVED AS CORRECTED
DATE: 11/14/62
BY: [Signature]

CP-1F0011 1/11/62
MERCENTIME CORP
ENGINEERS/ARCHITECTS
BLUMENFELD
FINE APTS BLDG - UNDER
JACK PIT DETAILS
JAN 62

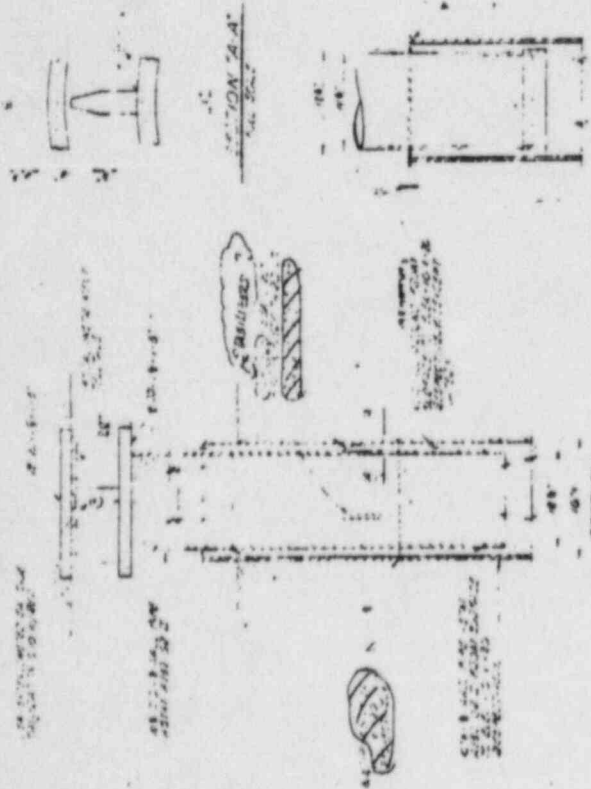


1. 1000 2010 1000

020673

NO.	DATE	DESCRIPTION	BY
1	10/15/54	AS BUILT	...
2	10/15/54
3	10/15/54
4	10/15/54
5	10/15/54
6	10/15/54
7	10/15/54
8	10/15/54
9	10/15/54
10	10/15/54
11	10/15/54
12	10/15/54
13	10/15/54
14	10/15/54
15	10/15/54
16	10/15/54
17	10/15/54
18	10/15/54
19	10/15/54
20	10/15/54
21	10/15/54
22	10/15/54
23	10/15/54
24	10/15/54
25	10/15/54
26	10/15/54
27	10/15/54
28	10/15/54
29	10/15/54
30	10/15/54

ALL DIMENSIONS TO FACE UNLESS OTHERWISE SPECIFIED
 ALL DIMENSIONS TO FACE UNLESS OTHERWISE SPECIFIED
 ALL DIMENSIONS TO FACE UNLESS OTHERWISE SPECIFIED
 ALL DIMENSIONS TO FACE UNLESS OTHERWISE SPECIFIED



LOAD TEST PIPE AND CASING

REINFORCED CONCRETE

LOAD TEST PIPE AND CASING

1. ALL DIMENSIONS TO FACE UNLESS OTHERWISE SPECIFIED
2. ALL DIMENSIONS TO FACE UNLESS OTHERWISE SPECIFIED
3. ALL DIMENSIONS TO FACE UNLESS OTHERWISE SPECIFIED
4. ALL DIMENSIONS TO FACE UNLESS OTHERWISE SPECIFIED
5. ALL DIMENSIONS TO FACE UNLESS OTHERWISE SPECIFIED
6. ALL DIMENSIONS TO FACE UNLESS OTHERWISE SPECIFIED
7. ALL DIMENSIONS TO FACE UNLESS OTHERWISE SPECIFIED
8. ALL DIMENSIONS TO FACE UNLESS OTHERWISE SPECIFIED
9. ALL DIMENSIONS TO FACE UNLESS OTHERWISE SPECIFIED
10. ALL DIMENSIONS TO FACE UNLESS OTHERWISE SPECIFIED
11. ALL DIMENSIONS TO FACE UNLESS OTHERWISE SPECIFIED
12. ALL DIMENSIONS TO FACE UNLESS OTHERWISE SPECIFIED
13. ALL DIMENSIONS TO FACE UNLESS OTHERWISE SPECIFIED
14. ALL DIMENSIONS TO FACE UNLESS OTHERWISE SPECIFIED
15. ALL DIMENSIONS TO FACE UNLESS OTHERWISE SPECIFIED
16. ALL DIMENSIONS TO FACE UNLESS OTHERWISE SPECIFIED
17. ALL DIMENSIONS TO FACE UNLESS OTHERWISE SPECIFIED
18. ALL DIMENSIONS TO FACE UNLESS OTHERWISE SPECIFIED
19. ALL DIMENSIONS TO FACE UNLESS OTHERWISE SPECIFIED
20. ALL DIMENSIONS TO FACE UNLESS OTHERWISE SPECIFIED
21. ALL DIMENSIONS TO FACE UNLESS OTHERWISE SPECIFIED
22. ALL DIMENSIONS TO FACE UNLESS OTHERWISE SPECIFIED
23. ALL DIMENSIONS TO FACE UNLESS OTHERWISE SPECIFIED
24. ALL DIMENSIONS TO FACE UNLESS OTHERWISE SPECIFIED
25. ALL DIMENSIONS TO FACE UNLESS OTHERWISE SPECIFIED
26. ALL DIMENSIONS TO FACE UNLESS OTHERWISE SPECIFIED
27. ALL DIMENSIONS TO FACE UNLESS OTHERWISE SPECIFIED
28. ALL DIMENSIONS TO FACE UNLESS OTHERWISE SPECIFIED
29. ALL DIMENSIONS TO FACE UNLESS OTHERWISE SPECIFIED
30. ALL DIMENSIONS TO FACE UNLESS OTHERWISE SPECIFIED

APPROVED AS CORRECTED
 DATE: 10/15/54
 BY: [Signature]

CP 170011 101

MERGENTIME CORPO
ENGINEERS CONTRACTORS

F. A. T. H. S. BULL

