

November 6, 1995

Mr. D. M. Smith
Senior Vice President -
Nuclear
PECO Energy
Nuclear Group Headquarters
Correspondence Control Desk
P. O. Box 195
Wayne, PA 19087-0195

SUBJECT: REORGANIZATION OF NRC REGION I STAFF

Dear Mr. Smith:

Effective October 1, 1995, NRC Region I reorganized in an effort to streamline operations and improve effectiveness. The highlights of this reorganization are:

- Elimination of an unnecessary layer of management. The positions previously called branch chiefs have been eliminated and the section chief positions have been renamed branch chief.
- The Division of Radiation Safety and Safeguards has been renamed the Division of Nuclear Materials Safety. Emergency preparedness, safeguards, and radiation safety functions for power reactors have been transferred to the Division of Reactor Safety.
- The Emergency Preparedness Section, Safeguards Section have been combined into a new Emergency Preparedness and Safeguards Branch in the Division of Reactor Safety.
- The Radiation Protection Section and Effluents Section have been combined into a new Radiation Safety Branch in the Division of Reactor Safety.

New organization charts are enclosed detailing these changes.

Sincerely,

ORIGINAL SIGNED BY:

Walter J. Pasciak, Chief
Projects Branch 4
Division of Reactor Projects

Docket Nos. 50-352; 50-353

Enclosure: As Stated

9511140056 951106
PDR ADOCK 05000352
P PDR

130129

IE01
|||

cc w/encl:

G. A. Hunger, Jr., Chairman, Nuclear Review Board and Director - Licensing

W. MacFarland, Vice President - Limerick Generating Station

J. L. Kantner, Regulatory Engineer - Limerick Generating Station

Secretary, Nuclear Committee of the Board

Nuclear Safety Information Center (NSIC)

Commonwealth of Pennsylvania

Distribution w/encl:
 Region I Docket Room (with concurrences)
 K. Gallagher, DRP
 D. Screnci, PAO (2)
 NRC Resident Inspector
 PUBLIC
 W. Dean, OEDO
 F. Rinaldi, NRR
 J. Stolz, PDI-2, NRR
 Inspection Program Branch, NRR (IPAS)

DOCUMENT NAME: G:\DIRECTOR\REORG.LTR

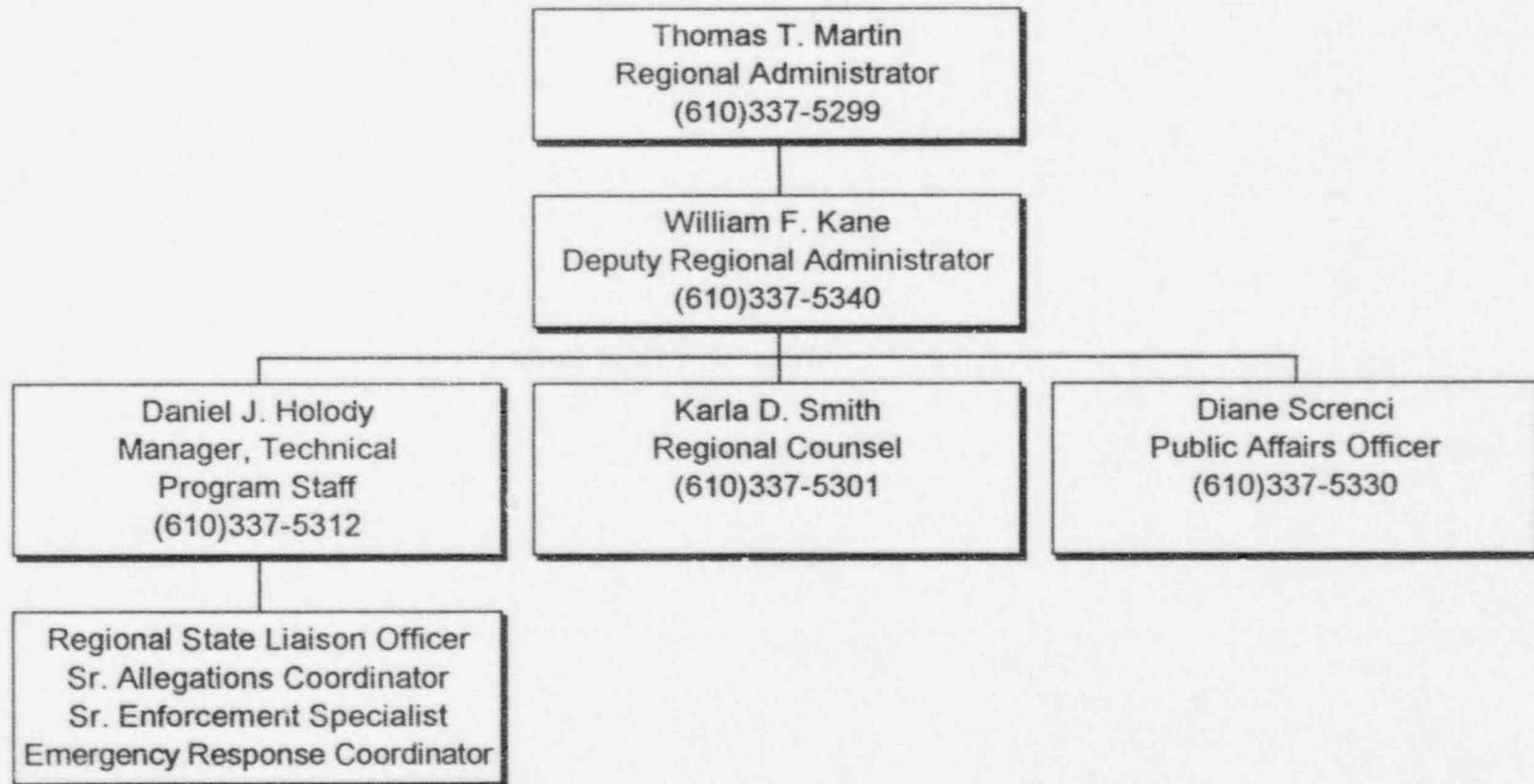
To receive a copy of this document, indicate in the box: "C" = Copy without attachment/enclosure "E" = Copy with attachment/enclosure
 "N" = No copy

OFFICE	RI/DRP	<input checked="" type="checkbox"/>	/	<input type="checkbox"/>	/	<input type="checkbox"/>	/	<input type="checkbox"/>
NAME	Pasciak/meo							
DATE	11/2/95							

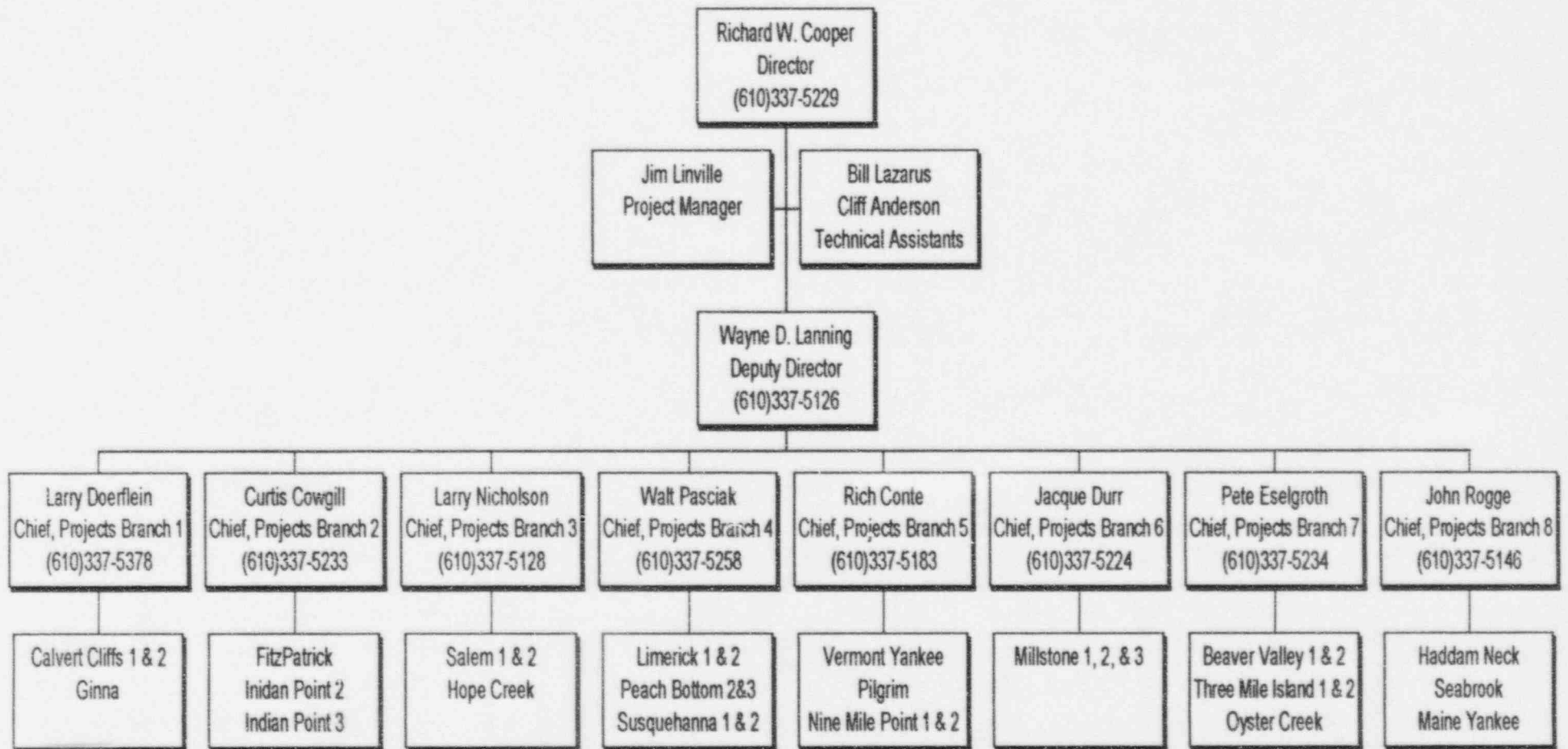
OFFICIAL RECORD COPY

IE01

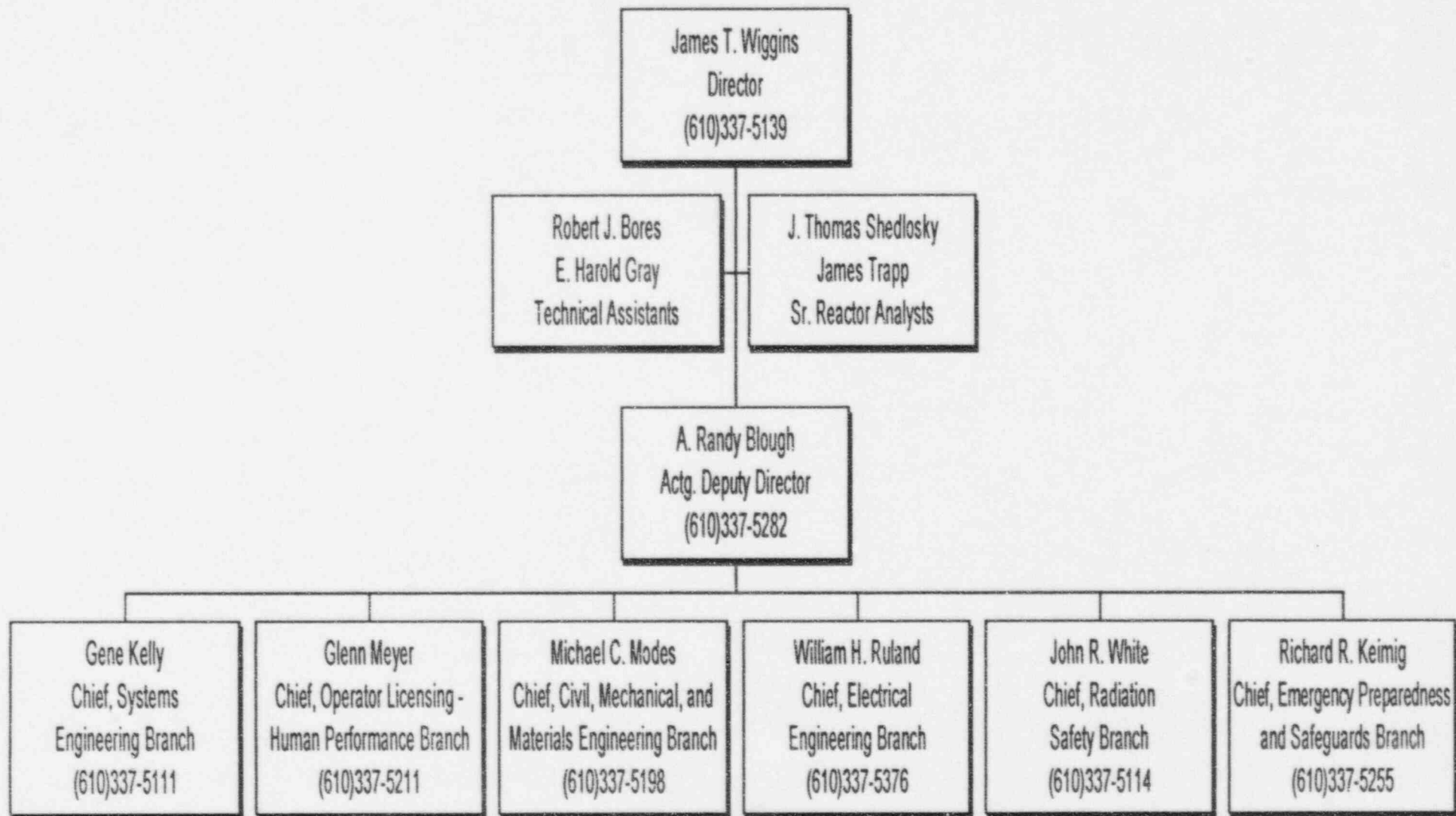
Office of the Regional Administrator



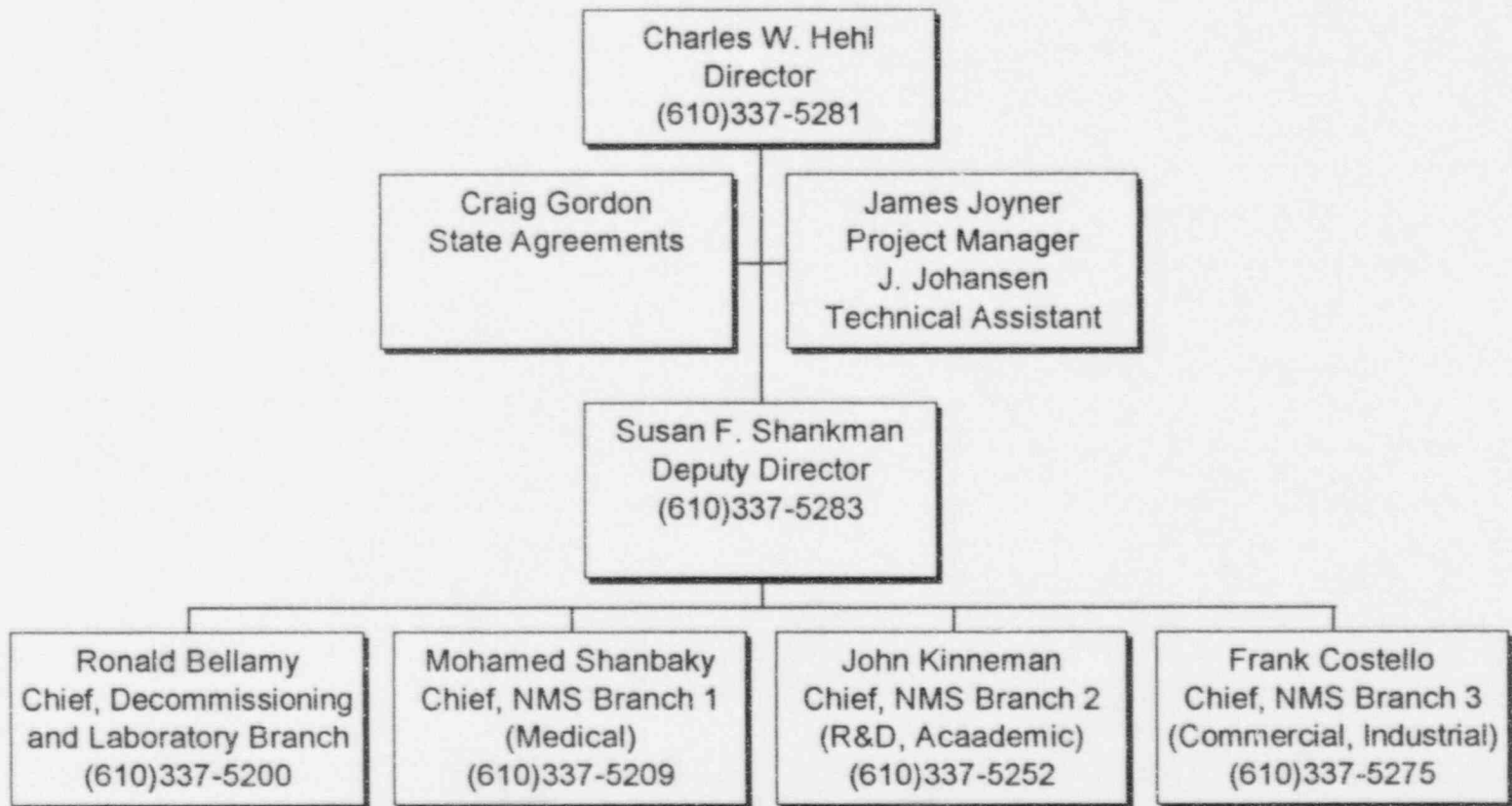
Division of Reactor Projects



Division of Reactor Safety



Division of Nuclear Materials Safety



Division of Resource Management

