



UNITED STATES
NUCLEAR REGULATORY COMMISSION

REGION IV

611 RYAN PLAZA DRIVE, SUITE 400
ARLINGTON, TEXAS 76011-8064

OCT 26 1995

Houston Lighting & Power Company
ATTN: William T. Cottle, Group
Vice President, Nuclear
P.O. Box 289
Wadsworth, Texas 77483

SUBJECT: SOUTH TEXAS PROJECT CO-OWNERS MANAGEMENT COMMITTEE MEETING

This refers to the meeting conducted in the Region IV office on October 16, 1995. This meeting was conducted to share the South Texas Project (STP) Co-Owners common priority on safe and reliable station operation, to discuss NRC views on current trends within both the industry and NRC and to foster an open discussion on the Co-Owner's Management Committee's role at STP.

In accordance with Section 2.790 of the NRC's "Rules of Practice," Part 2, Title 10, Code of Federal Regulations, a copy of this letter will be placed in the NRC's Public Document Room.

Should you have any questions concerning this matter, we will be pleased to discuss them with you.

Sincerely,

J. E. Dyer, Director
Division of Reactor Projects

Dockets: 50-498
50-499
Licenses: NPF-76
NPF-80

Attachments:
1. Attendance List
2. Meeting Agenda & NRC Presentation

cc:
Houston Lighting & Power Company
ATTN: Lawrence E. Martin, General Manager
Nuclear Assurance & Licensing
P.O. Box 289
Wadsworth, Texas 77483

9510310126 951026
PDR ADOCK 05000498
P PDR

City of Austin
Electric Utility Department
ATTN: J. C. Lanier/M. B. Lee
721 Barton Springs Road
Austin, Texas 78704

City Public Service Board
ATTN: K. J. Fiedler/M. T. Hardt
P.O. Box 1771
San Antonio, Texas 78296

Morgan, Lewis & Bockius
ATTN: Jack R. Newman, Esq.
1800 M. Street, N.W.
Washington, D.C. 20036-5869

Central Power and Light Company
ATTN: Mr. C. A. Johnson
P.O. Box 289
Mail Code: N5012
Wadsworth, Texas 77483

INPO
Records Center
700 Galleria Parkway
Atlanta, Georgia 30339-5957

Mr. Joseph M. Hendrie
50 Bellport Lane
Bellport, New York 11713

Bureau of Radiation Control
State of Texas
1100 West 49th Street
Austin, Texas 78756

Office of the Governor
ATTN: Andy Barrett, Director
Environmental Policy
P.O. Box 12428
Austin, Texas 78711

Judge, Matagorda County
Matagorda County Courthouse
1700 Seventh Street
Bay City, Texas 77414

Houston Lighting & Power Company

-3-

Licensing Representative
Houston Lighting & Power Company
Suite 610
Three Metro Center
Bethesda, Maryland 20814

Houston Lighting & Power Company
ATTN: Rufus S. Scott, Associate
General Counsel
P.O. Box 61867
Houston, Texas 77208

Egan & Associates, P.C.
ATTN: Joseph R. Egan, Esq.
2300 N Street, N.W.
Washington, D.C. 20037

Little Harbor Consultants, Inc
ATTN: Mr. J. W. Beck
44 Nichols Road
Cohasset, MA 02025-1166

bcc to DMB (IE01)

bcc distrib. by RIV:

L. J. Callan

Branch Chief (DRP/A)

MIS System

RIV File

R. Bachmann, OGC (MS: 15-B-18)

Resident Inspector

Leah Tremper (OC/LFDCB, MS: TWFN 9E10)

DRSS-FIPB

Project Engineer (DRP/A)

Branch Chief (DRP/TSS)

To receive copy of document, indicate in box: "C" = Copy without enclosures "E" = Copy with enclosures "N" = No copy

AC:DRP/A	<i>EW</i>	D:DRP						
JLPellet;df	<i>df</i>	JEDyer	<i>JM</i>					
10/ /95		10/26/95						

OFFICIAL RECORD COPY

bcc to DMB (IE01)

bcc distrib. by RIV:

L. J. Callan

Branch Chief (DRP/A)

MIS System

RIV File

R. Bachmann, OGC (MS: 15-B-18)

Resident Inspector

Leah Tremper (OC/LFDCB, MS: TWFN 9E10)

DRSS-FIPB

Project Engineer (DRP/A)

Branch Chief (DRP/TSS)

To receive copy of document, indicate by box: "C" = Copy without enclosures "E" = Copy with enclosures "N" = No copy

AC:DRP/A	<i>EV</i>	D:DRP							
JLPellet;df	<i>df</i>	JEDyer	<i>JH</i>						
10/ /95		10/26/95							

OFFICIAL RECORD COPY

300033

ATTENDANCE

October 16, 1995

South Texas Project Management Committee Meeting

<u>Name</u>	<u>Affiliation</u>	<u>Title</u>
L. J. Callan	NRC RIV	Regional Administrator
T. P. Gwynn	NRC RIV	Director, Division of Reactor Safety
J. E. Dyer	NRC RIV	Director, Division of Reactor Projects (DRP)
S. J. Collins	NRC RIV	Deputy Regional Administrator
J. L. Pellet	NRC RIV	Acting Chief, Project Branch A, DRP
B. W. Henderson	NRC RIV	Public Affairs Officer
W. T. Cottle	HL&P	Group Vice President, Nuclear
J. J. Sheppard	HL&P	Asst. to Group Vice President, Nuclear
F. K. Mangan	HL&P	General Manager, Plant Services
T. Underwood	HL&P	Administrator, Participant Services
C. A. Johnson	CP&L	Manager, STP Activities
G. E. Vaughn	CP&L	Vice President, Nuclear
M. B. Lee	City of Austin	Chief Operating Officer, Electric Utility Department
J. Lauier	City of Austin	Director, Joint Projects
J. Gooding	City of Austin	Assistant City Attorney
J. Beck	Mgt. Committee	Consultant to Committee
K. Fiedler	CPSB	Asst. General Manager, Operations
M. T. Hardt	CPSB	Director, Nuclear Division



UNITED STATES
NUCLEAR REGULATORY COMMISSION

REGION IV

611 RYAN PLAZA DRIVE, SUITE 400
ARLINGTON, TEXAS 76011-8064

October 16, 1995

HOUSTON LIGHTING & POWER COMPANY'S MANAGEMENT MEETING

- Introductions L. J. Callan/W. T. Cottle
- Opening L. J. Callan
- Region IV Organization S. J. Collins/Division Directors
- NRC Organization/Recent Initiatives L. J. Callan
- Question and Answer Session

Attachments:
_ Notice of Licensee Meeting
_ RIV Organizational Charts



UNITED STATES
NUCLEAR REGULATORY COMMISSION

REGION IV

611 RYAN PLAZA DRIVE, SUITE 400
ARLINGTON, TEXAS 76011-8064

September 1, 1995
NOTICE OF LICENSEE MEETING

Name of Licensee: Houston Lighting & Power Company

Name of Facility: South Texas Project Electric Generating Station (STP)

Docket No.: 50-498; 50-499

Date and Time of Meeting: October 16, 1995
10 a.m.

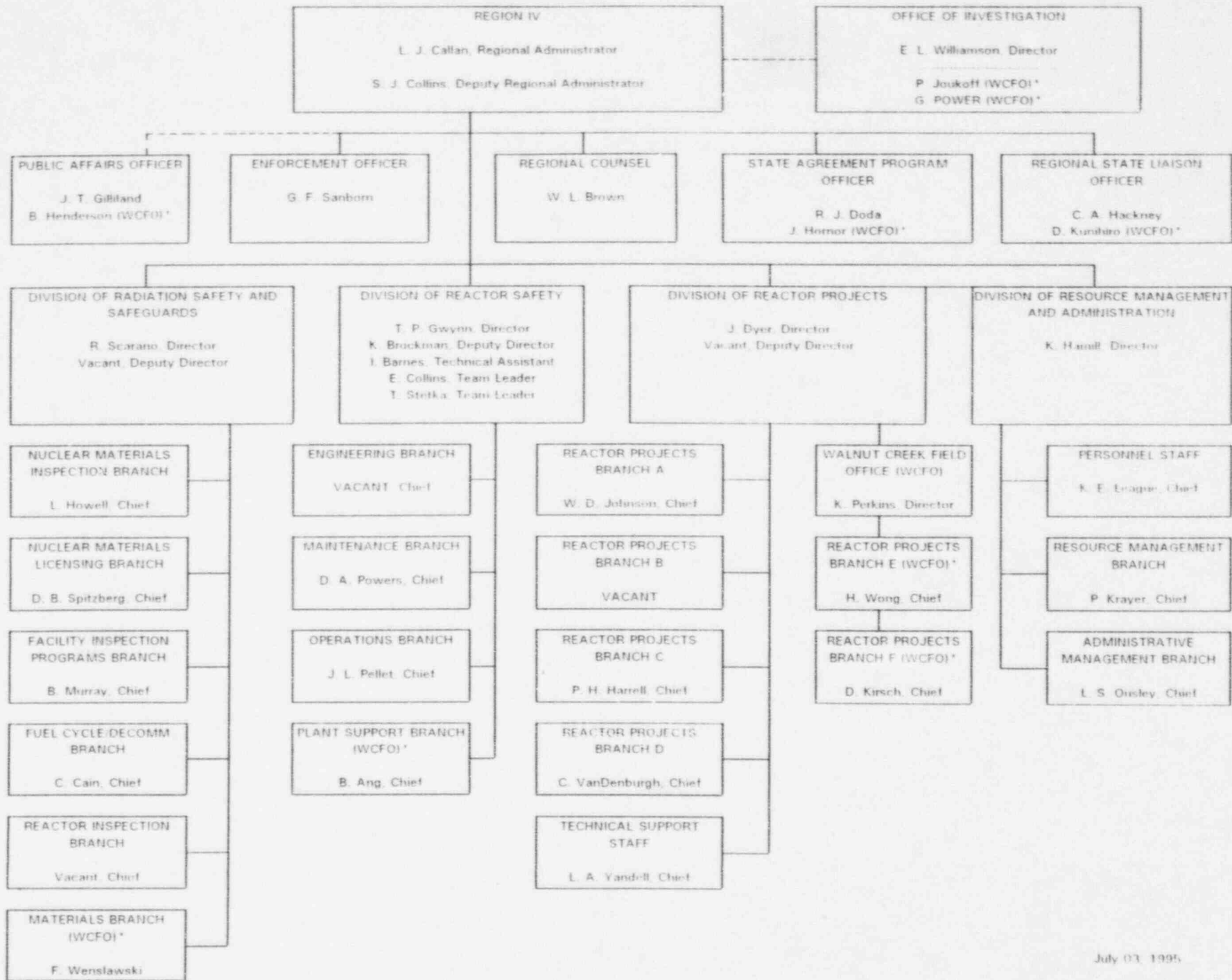
Location of Meeting: Region IV office, Arlington, Texas
Training Conference Room, 4th floor

Purpose of Meeting: This meeting has been requested by HL&P's Management Committee to share co-owners' common priority on safe and reliable station operation, to discuss NRC's views on current trends within both the industry and the NRC, and to foster an open discussion on the Management Committee's role at STP.

NRC Attendees: L. J. Callan, Regional Administrator
S. J. Collins, Deputy Regional Administrator
J. E. Dyer, Director, Division of Reactor Projects (DRP)
T. P. Gwynn, Director, Division of Reactor Safety
L. A. Yandell, Acting Chief, Project Branch A, DRP
R. A. Kopriva, Project Engineer, Project Branch A, DRP

Licensee Attendees: W. T. Cottle, Group Vice President - Nuclear
F. K. Mangan, General Manager, Plant Services

Other Attendees: K. J. Fiedler, Assistant General Manager for Operations,
City Public Service of San Antonio
M. T. Hardt, Director, Nuclear Division, City Public
Service of San Antonio
G. E. Vaughn, Vice President - Nuclear Affairs, Central
Power and Light Company
C. A. Johnson, Manager, STP Activities, Central Power
and Light Company
J. C. Lanier, III, Director of Joint Projects, City of
Austin Electric Utility Department
M. B. Lee, Chief Operating Officer, City of Austin
Electric Utility Department
P. W. Golde, Manager, Joint Projects, City of Austin
Electric Utility Department
C. G. Thrash, Jr., Secretary to the Management
Committee, Retired



Director - JIM DYER
 Deputy Director (Acting) - BILL JOHNSON
 Director (WCFO) - KEN PERKINS

ADMINISTRATIVE STAFF

Director's Secretary - Lucy Thomas
 Branch Chief Secretary - Denise Freeman (Branches A, C, and TSS; Backup for E)
 Branch Chief Secretary - Colleen Murnahan (Branches B and D; Backup for F)
 Director's Secretary (WCFO) - Maurine Smith
 Branch Secretary (WCFO) - Jo Bianchi

PROJECT BRANCH A

Chief (Acting) - JOHN PELLET
 Project Engineer - Ron Kopriva

PROJECT BRANCH B

Chief (Acting) - DENNIS KIRSCH
 Project Engineer - David Graves
 Project Engineer (Acting) - Dave Corporandy

FCS

SRI - Wayne Walker
 RI - Vincent Gaddy
 ROA - Nancy Curley

STP

SRI - David Loveless
 RI - Jack Keeton
 RI - Wayne Sifre
 ROA - Lenora Reyna

CPSES

SRI - Tony Gody, Jr.
 RI - Harry Freeman
 RI - Vonna Ordaz
 ROA - Carole Austin

WOLF CREEK

SRI - Fred Ringwald
 RI - Jennifer Dixon-Herrity
 ROA - Shirley Allen

CALLAWAY

SRI - Dave Passehl
 RI - Frank Brush
 ROA - Dawn Yancey

PROJECT BRANCH C

Chief (Acting) - TERRY REIS
 Project Engineer (Acting) - Rebecca Nease

PROJECT BRANCH D

Chief (Acting) - PHIL HARRELL
 Project Engineer - Greg Pick
 Project Engineer (Acting) - Vacant

CNS

SRI - Mary Miller
 RI - Chris Skinner
 ROA - Shirley Neddenriep

ANO

SRI - Kriss Kennedy
 RI - Steve Campbell
 RI - Jim Melfi
 ROA - Vicki High

RBS

SRI - Ward Smith
 RI - Dave Proulx
 ROA - Marj Pound

W3

SRI - Vacant
 RI - Troy Pruett
 ROA - Ann Youngs

GRAND GULF

SRI - Jeff Tedrow
 RI - Charlie Hughey
 ROA - Vacant

PROJECT BRANCH E

Chief - HOWARD WONG
 Senior Project Inspector - Gary Johnston

PROJECT BRANCH F

Chief (Acting) - RANDY HUEY
 Senior Project Inspector - Dyle Acker
 Project Inspector - Brad Olson

WNP-2

SRI - Rob Barr
 RI - Vacant
 ROA - Helen Brownell

DIABLO CANYON

SRI - Mike Tschiltz
 RI - Scott Boynton
 ROA - Jean Gellis

SAN ONOFRE

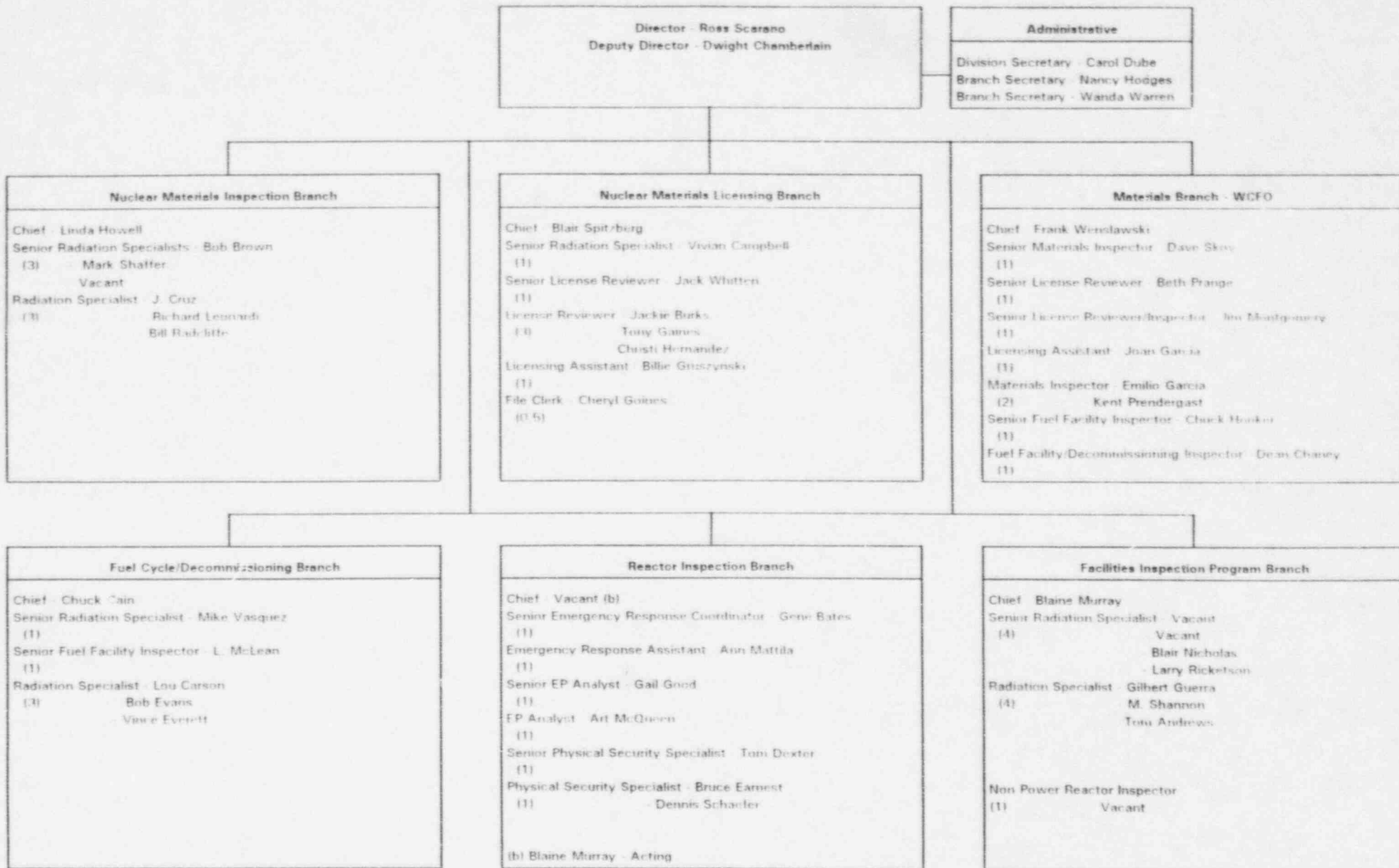
SRI - Jim Sloan
 RI - David Solorio
 RI - John Russell
 ROA - Stefani Neidholdt

PALO VERDE

SRI - Ken Johnston
 RI - Vacant
 RI - John Kramer
 RI - Denise Garcia
 ROA - Sue Howell

TECHNICAL SUPPORT STAFF

Chief - LARRY YANDELL
 Senior Project Engineer - Vacant
 Project Engineer - Ray Azua
 Reactor Projects Assistant - Loretta Williams



REGION IV - DIVISION OF REACTOR SAFETY

PAT GWYNN	Director
KEN BROCKMAN	Deputy Director
IAN BARNES	Technical Assistant
ELMO COLLINS	Senior Reactor Analyst
⁽²⁾ BILL JONES	Senior Reactor Analyst
Cheryl Sudman	Director's Secretary

Lynn Berger, Secretary
ENGINEERING BRANCH (EB)
 CHRIS VANDENBURGH, Chief
 Paul Gage
 Paula Goldberg
 Bill McNeill
 Ray Mullikin
 Chris Myers
 Mike Runyan
 Linda Smith
 Tom Stetka

FUNCTIONS

50.59
 Configuration Control
 Design Changes
 Design Basis Reconstitution
 Digital Controls
 IPE/IPEEE
 Modifications/Testing
 MOV TI-109
 Plant Systems Components
 PRA
 Pressure Locking TI-*
 Seismic Adequacy TI-124
 Service Water TI-118
 Station Blackout TI-120

MAINTENANCE BRANCH (MB)

DALE POWERS, Chief
 Lee Ellershaw
 Claude Johnson
 Chuck Paulk
 Kathy Weaver
 Greg Werner
 John Whittemore ⁽¹⁾

FUNCTIONS

Balance of Plant
 Check Valve TI-110
 Chemistry
 Containment/Testing
 Core Performance
 Environmental Qualification
 Erosion/Corrosion Programs
 Fuel Handling
 ISI
 IST
 Maintenance Processes
 Materials
 - NDE
 - Welding
 On-Line Leak Sealing TI-*
 Outage Planning
 Performance Indicators
 Pipe Support
 Surveillance Processes
 Rosemount Pressure Transmitters TI-122

Cheryl Goines, Secretary
OPERATIONS BRANCH (OB)
 JOHN PELLET, Chief⁽³⁾
 Joe Tapia, Acting Branch Chief
 Laura Hurley, OL Assistant
 Howard Bundy
 Edward Ford
 Ryan Lantz
 Steve McCrory
 Tom McKernon
 Tom Meadows
 Mike Murphy

FUNCTIONS

Dissolved Gas in RCS TI-*
 EOP & Procedure Inspections
 EP Interface
 Event Reporting
 Operational/Reactive Insp. Support
 Operator Licensing
 Outage Planning
 Safe Shutdown
 Training Programs

PLANT SUPPORT BRANCH (PSB) - WCFO

BILL ANG, Chief
 Cliff Clark
 Bob Pate
 Dave Pereira
 Phil Qualls
 Bill Wagner
 Jo Bianchi, Part-Time Branch Secy

FUNCTIONS

Corrective Action Programs
 Fire Protection
 Housekeeping Controls
 Organizations
 Procurement/Dedication
 Receipt Storage
 Records
 Review Committees
 SA/OV
 Steam Generator Tube Integrity TI-*
 Thermolag TI-*
 Threaded Fasteners TI-*

(1) Detailed to RA's Office til 2/96
 (2) N. d-November
 (3) On rotation to DRP til 3/1/96

*Indicates not yet issued

Document Name: R:\1ORG-CHT_DRS.ORG

Effective September 24, 1995 (cls)

REGION IV
DIVISION OF REACTOR SAFETY

REVISED DATE: October 16, 1995

STAFF BACKGROUND LIST OF SKILLS

COLLETS	WHITTEMORE	ELECTRICAL DISTRIBUTION		EMERGENCY DIESEL GENERATOR	EMERGENCY OPERATING PROCEDURES	FROSTING/CORROSION PROGRAMS
		ON SITE	OFF SITE			
Bundy Lantz McKernon Meadows Murphy	Fate Pereira Qualls Stetka Tapia	GAFF Gaddy Qualls Stetka	STETKA Gaddy Paulk	WHITTEMORE McNeill Runyan	OPS Coordinator Bundy Lantz McCrorry McKernon Meadows Murphy	BARNES Clark Johnson Runyan Wagner
FAILURE ANALYSIS						
BARNES	QUALLS	FIRE PROTECTION		INSTRUMENTATION & CONTROL LOGIC CIRCUITS	ISI PROGRAMS	LEAK RATE TESTING
		WAGNER	MURPHY	GAFF McNeill Runyan	ISI PROGRAMS BARNES JOHNSON Ellershaw Clark McNeill Wagner	ELLERSHAW JOHNSON
TRAINING						
OPs Coordinator	Pereira Tapia Whittemore	JOHNSON	ELLERSHAW GADDY	BARNES WAGNER	MECHANICAL ENGINEERING MYERS	MOTOR OPERATED VALVES RUNYAN PAULK
McCrorry McKernon Meadows Pate		Bundy Collins Clark Goldberg McKernon Myers	Paulk Qualls Tapia Stetka Whittemore	Clark	Clark Ellershaw McKernon	Clark Goldberg
NONDESTRUCTIVE EXAMINATION						
ELLERSHAW Barnes Clark McNeill	JOHNSON Runyan Wagner	STETKA Bundy Clark McKernon	WHITTEMORE Murphy Paulk Tapia	McNeill Collins Stetka	GOLDBERG Clark	WAGNER Barnes Ellershaw
PRESSURE RELIEF VALVES			PRA METROLOGY		PROCUREMENT	
MYERS			McNeill		WAGNER	

QUALITY ASSURANCE		REACTOR CONSTRUCTION CIVIL STRUCTURAL		REACTOR OPERATIONS Westinghouse		REACTOR OPERATIONS Combustion Engineering		REACTOR OPERATIONS General Electric	
PATE ¹	WAGNER ¹	RUNYAN ¹	JOHNSON ¹	**OPs Coordinator ¹		**OPs Coordinator ¹		**OPs Coordinator ¹	
Barnes	Murphy	Ellershaw	Tapia	Bundy	Murphy	Bundy	Pate	Bundy	Murphy
Bundy	Paulk	Qualls		Clark	Pate	Johnson	Paulk	Collins	Pate
Ellershaw	Runyan			Ellershaw	Paulk	Lantz	Pereira	Lantz	Paulk
McNeill				Goldberg	Pereira	McCrorry	Qualls	McCrorry	Qualls
				Lantz	Qualls	McKernon	Stetka	McKernon	Stetka
				McCrorry	Stetka	Meadows	Tapia	McNeill	Tapia
				McKernon	Tapia	Murphy	Whittemore	Meadows	Whittemore
				Meadows	Whittemore				
REACTOR OPERATIONS Babcock & Wilcox		REACTOR OPERATIONS Nonpower Reactors		REACTOR PHYSICS		REACTOR STARTUP		REFUELING OPERATIONS	
**OPs Coordinator ¹		McCrorry ¹	Whittemore ²	Whittemore ¹	Gage ²	Tapia ¹	Bundy ² McKernon ²	Ellershaw ¹	Gaddy ²
Bundy	Paulk	Murphy	Qualls			Murphy	Qualls	Bundy	Qualls
McCrorry	Qualls	Pereira	Stetka			Pate	Stetka	Johnson	Stetka
McKernon	Stetka					Paulk	Tapia	Meadows	Whittemore
Meadows	Whittemore					Pereira	Whittemore	Pereira	
Murphy									
ROOT CAUSE ANALYSIS		STEAM GENERATORS		WELDING		**OPERATIONS COORDINATOR		GENERAL ENGINEERING COORDINATOR	
Collins ¹	Stetka ¹	Barnes ¹	Clark ¹	Barnes ¹	Ellershaw ¹	**BUNDY	South Texas 1/2 River Bend Station	PAULK	Cooper River Bend Station
Bundy	McNeill	Pereira		Bundy	McNeill	**LANTZ	Fort Calhoun Station Waterford 3	RUNYAN	South Texas 1/2 Palo Verde 1/2/3
Clark	Murphy			Clark	Wagner	**McCrorry	Palo Verde	GAGE	Arkansas Nuclear One Waterford 3
Ellershaw	Paulk			Johnson		**McKernon	Arkansas Nuclear One Washington Nuclear-2	McNeill	Diablo Canyon 1/2 Wolf Creek
Goldberg	Pereira					**Meadows	Comanche Peak 1/2 Cooper	MYERS	Washington Nuclear-2 Fort Calhoun Station
Lantz	Tapia					**MURPHY	San Onofre 2/3	GOLDBERG	San Onofre 2/3 Comanche Peak 1/2
McCrorry	Whittemore					**TAPIA	Diablo Canyon 1/2 Wolf Creek		
McKernon									

¹ Primary contact in designated area
(has required background and experience
and will continue training to maintain expertise)

² Secondary contact in designated area

**Operations Coordinator