

## OPERATING DATA REPORT

DOCKET NO. 50-302  
 DATE 10/1/84  
 COMPLETED BY D. Graham  
 TELEPHONE (904) 795-3802

### OPERATING STATUS

1. Unit Name: Crystal River Unit 3
2. Reporting Period: 9/1/84 - 9/30/84
3. Licensed Thermal Power (MWt): 2544
4. Nameplate Rating (Gross MWe): 890
5. Design Electrical Rating (Net MWe): 825
6. Maximum Dependable Capacity (Gross MWe): 860
7. Maximum Dependable Capacity (Net MWe): 821

Notes

8. If Changes Occur in Capacity Ratings (Items Number 3 Through 7) Since Last Report, Give Reasons:

NA

9. Power Level To Which Restricted, If Any (Net MWe): NA

10. Reasons For Restrictions, If Any: NA

	This Month	Yr.-to-Date	Cumulative
11. Hours In Reporting Period	720	6575	66215
12. Number Of Hours Reactor Was Critical	720	6260	43829.2
13. Reactor Reserve Shutdown Hours	0	0	1280.3
14. Hours Generator On-Line	720	6218.3	42837.3
15. Unit Reserve Shutdown Hours	0	0	0
16. Gross Thermal Energy Generated (MWH)	1692039	14901736	96866071
17. Gross Electrical Energy Generated (MWH)	582111	5135795	33062531
18. Net Electrical Energy Generated (MWH)	554600	4895645	31412728
19. Unit Service Factor	100%	94.6%	64.7%
20. Unit Availability Factor	100%	94.6%	64.7%
21. Unit Capacity Factor (Using MDC Net)	93.8%	90.7%	59.8%
22. Unit Capacity Factor (Using DER Net)	93.4%	90.3%	57.5%
23. Unit Forced Outage Rate	0%	1.7%	21.0%

24. Shutdowns Scheduled Over Next 6 Months (Type, Date, and Duration of Each):

Refueling outage scheduled to begin March 9, 1985, and last 20 weeks.

25. If Shut Down At End Of Report Period, Estimated Date of Startup: NA

26. Units In Test Status (Prior to Commercial Operation):

	Forecast	Achieved
INITIAL CRITICALITY	_____	<u>1/14/77</u>
INITIAL ELECTRICITY	_____	<u>1/30/77</u>
COMMERCIAL OPERATION	_____	<u>3/13/77</u>

8410160177 840930  
 PDR ADDCK 05000302  
 R PDR

(9/77)

IE24  
 Y

**AVERAGE DAILY UNIT POWER LEVEL**

DOCKET NO. 50-302  
 UNIT FLCRP-3  
 DATE 10/1/84  
 COMPLETED BY D. Graham  
 TELEPHONE (904) 795-3802

MONTH 9/84

DAY	AVERAGE DAILY POWER LEVEL (MWe-Net)	DAY	AVERAGE DAILY POWER LEVEL (MWe-Net)
1	<u>785</u>	17	<u>688</u>
2	<u>789</u>	18	<u>590</u>
3	<u>810</u>	19	<u>590</u>
4	<u>765</u>	20	<u>740</u>
5	<u>795</u>	21	<u>799</u>
6	<u>784</u>	22	<u>784</u>
7	<u>814</u>	23	<u>795</u>
8	<u>809</u>	24	<u>789</u>
9	<u>766</u>	25	<u>794</u>
10	<u>798</u>	26	<u>787</u>
11	<u>788</u>	27	<u>812</u>
12	<u>791</u>	28	<u>776</u>
13	<u>802</u>	29	<u>752</u>
14	<u>781</u>	30	<u>783</u>
15	<u>780</u>	31	<u>      </u>
16	<u>776</u>		

**INSTRUCTIONS**

On this format, list the average daily unit power level in MWe-Net for each day in the reporting month. Compute to the nearest whole megawatt.

UNIT SHUTDOWNS AND POWER REDUCTIONS

REPORT MONTH 9/84

DOCKET NO. 50-302  
 UNIT NAME FLCRP-3  
 DATE 10/1/84  
 COMPLETED BY S.A. Stewart  
 TELEPHONE (904) 795-3802

No.	Date	Type <sup>1</sup>	Duration (Hours)	Reason <sup>2</sup>	Method of Shutting Down Reactor <sup>3</sup>	Licensee Event Report #	System Code <sup>4</sup>	Component Code <sup>5</sup>	Cause & Corrective Action to Prevent Recurrence
84-29	09/17/84	F	0.0	A	5	N/A	HC	HTEXCH	Reduced power to locate and repair a condenser salt water leak. Also cleaned condenser waterboxes.

<sup>1</sup>  
 F- Forced  
 S- Scheduled

<sup>2</sup>  
 Reason:  
 A-Equipment Failure (Explain)  
 B-Maintenance or Test  
 C-Refueling  
 D-Regulatory Restriction  
 E-Operator Training & License Examination  
 F-Administrative  
 G-Operational Error (Explain)  
 H-Other (Explain)

<sup>3</sup>  
 Method:  
 1-Manual  
 2-Manual Scram.  
 3-Automatic Scram.  
 4-Other (Explain)

<sup>4</sup>  
 Exhibit G - Instructions for Preparation of Data Entry Sheets for Licensee Event Report (LER) File (NUREG-0161)

<sup>5</sup>  
 Exhibit I - Same Source

MONTHLY OPERATIONAL SUMMARY STATEMENT

DOCKET NO. 50-302

UNIT FLCRP-3

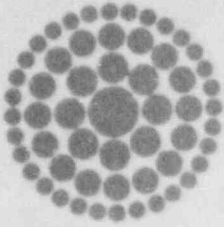
DATE 10/1/84

COMPLETED BY S.A. Stewart

TELEPHONE (904) 795-3802

MONTH September 1984

SUMMARY STATEMENT: Crystal River 3 operated with one power reduction for a condenser tube leak and no outages during September. Throughout the month the plant was limited to approximately 95% power due to high water levels in the Steam Generator caused by fouling.



**Florida  
Power**  
CORPORATION

October 4, 1984  
3F1084-07

Mr. Richard C. DeYoung, Director  
Office of Inspection and Enforcement  
U.S. Nuclear Regulatory Commission  
Attn: Document Control Desk  
Washington, DC 20555

Subject: Crystal River Unit 3  
Docket No. 50-302  
Operating License No. DPR-72  
Monthly Operating Report

Dear Sir:

Attached are twelve (12) copies of the Crystal River Unit 3 September 1984 Monthly Operating Report. This report is submitted in accordance with Technical Specification 6.9.1.6.

Sincerely,

G. R. Westafer  
Manager, Nuclear Operations  
Licensing and Fuel Management

AEF/feb

Attachments

cc: Mr. J. P. O'Reilly  
Regional Administrator, Region II  
Office of Inspection & Enforcement  
U.S. Nuclear Regulatory Commission  
101 Marietta Street N.W., Suite 2900  
Atlanta, GA 30323

IE24  
11