

U. S. NUCLEAR REGULATORY COMMISSION

REGION III

Reports No. 50-329/84-25(DRP); 50-330/84-26(DRP)

Docket Nos. 50-329; 50-330

Licenses No. CPPR-81; CPPR-82

Licensee: Consumers Power Company  
1945 West Parnall Road  
Jackson, MI 49201

Facility Name: Midland Plant, Units 1 and 2

Meeting At: NRC Region III Office, Glen Ellyn, Illinois

Meeting Conducted: August 24, 1984

Report Prepared By: R. B. Landsman  
Project Inspector

*RB Landsman*

Date 9/21/84

Approved By: *J J Harrison*  
J. J. Harrison, Chief  
Section 1D, Midland

Date 9/21/84

Meeting Summary

Meeting Held on August 24, 1984 (Reports No. 50-329/84-25(DRP); 50-330/84-26(DRP))

Subject: Discussion of the licensee's future plans for the Midland facility.

Results: During the meeting between the NRC and Consumers Power Company, the licensee's staff discussed the shutdown plans for the Midland facility.

## DETAILS

### 1. Persons in Attendance

#### Consumers Power Company (CPCo)

S. Howell, Executive Vice President  
J. Cook, Vice President  
J. Mooney, Site Manager  
J. Bruner, Attorney  
D. Budzik, Licensing  
H. Leonard, Quality Assurance  
R. Erhardt, Engineering and Licensing

#### U. S. Nuclear Regulatory Commission (NRC)

J. Keppler, Regional Administrator, RIII  
R. Warnick, Chief, Projects Branch 1, RIII  
J. Harrison, Chief, Projects Section 1D, RIII  
R. Landsman, Project Inspector, RIII  
B. Berson, Regional Counsel, RIII  
D. Hood, Project Manager, NRR  
W. Paton, Attorney, ELD

### 2. Meeting

The NRC staff met with the licensee on August 24, 1984, to discuss the licensee's future plans for the Midland facility.

Mr. Howell began the discussion by outlining the financial history of events which led up to the site shutdown.

Mr. Cook followed by presenting the purpose of the shutdown plan which is to preserve the option to resurrect the project in the future. He then gave a general summary of the plan and CPCo's new Midland organization (see Attachment 1).

Mr. Mooney gave specific details of some major components of the shutdown plan which included remedial soils activities, records retention, plant layup and maintenance activities, and plant security (see Attachment 2).

Mr. Leonard then discussed the new Quality Assurance Program for the shutdown plan (see Attachment 3).

Mr. Butzik concluded by presenting the Midland shutdown licensing activities (see Attachment 4).

During and following the presentations, the staff questioned the licensee in regards to specific aspects of the shutdown plan.

Attachments: As stated

**ATTACHMENT 1**

MIDLAND PROJECT SHUTDOWN PLAN

## PURPOSE

THE PURPOSE OF THE MIDLAND ENERGY CENTER PROJECT SHUTDOWN PLAN IS TO PROVIDE A MECHANISM TO MANAGE THE SHUTDOWN OF THE PROJECT IN SUCH A WAY AS TO PROVIDE THE COMPANY'S MANAGEMENT, THE COMPANY'S STOCKHOLDERS, AND THE APPLICABLE REGULATORY BODIES WITH CONFIDENCE THAT THE COMPANY HAS UNDERTAKEN THIS TASK WITH A SET OF LOGICAL AND UNDERSTANDABLE OBJECTIVES, AND IS PREPARED TO ACHIEVE THOSE OBJECTIVES IN A PRUDENT AND EFFECTIVE MANNER.

## OBJECTIVES

- A. THE PROJECT WILL BE SHUTDOWN AS RAPIDLY AND EFFICIENTLY AS PRACTICAL, ASSUMING THAT IT IS UNLIKELY THAT THE PROJECT WILL BE RESTARTED IN THE NEAR TERM.
  
- B. ACTIVITIES DURING THE PHASES OF THE SHUTDOWN SHALL BE PLANNED BASED ON MINIMIZING THE COST TO SUSPEND THE WORK WHILE PRESERVING THE ASSETS THAT HAVE BEEN ACCUMULATED OVER THE LIFE OF THE PROJECT.
  
- C. THE SHUTDOWN PLAN SHOULD PRESERVE THE OPTION TO RESURRECT THE PROJECT.
  
- D. TO THE EXTENT PRACTICABLE, USE CP CO PERSONNEL TO CARRY OUT THE SHUTDOWN, REPLACING CONTRACTORS, CONTRACT PERSONNEL AND CONSULTANTS.

## PHASES OF THE SHUTDOWN

### A. INITIAL STAFF RAMPDOWN

- CRAFT LAYOFFS
- CONTRACT AND CONSULTANT PERSONNEL TERMINATIONS
- CPCO AND BECHTEL PROFESSIONAL AND HOURLY LAYOFFS

### B. PROJECT DEMOBILIZATION

- PROCEED WITH ADDITIONAL DESTAFFING AS REQUIRED
- COMPLETE DETAILED PLANNING OF THE SHUTDOWN
- PUT THE PLANT INTO LAYUP

### C. LONG TERM SURVEILLANCE AND MAINTENANCE

- PRESERVE THE PLANT IN ITS SHUTDOWN CONDITION
- DECIDE PROJECT'S FUTURE:
  - CONTINUE LONG TERM SURVEILLANCE AND MAINTENANCE
  - OR
  - PLAN AND CARRY OUT PERMANENT ABANDONMENT

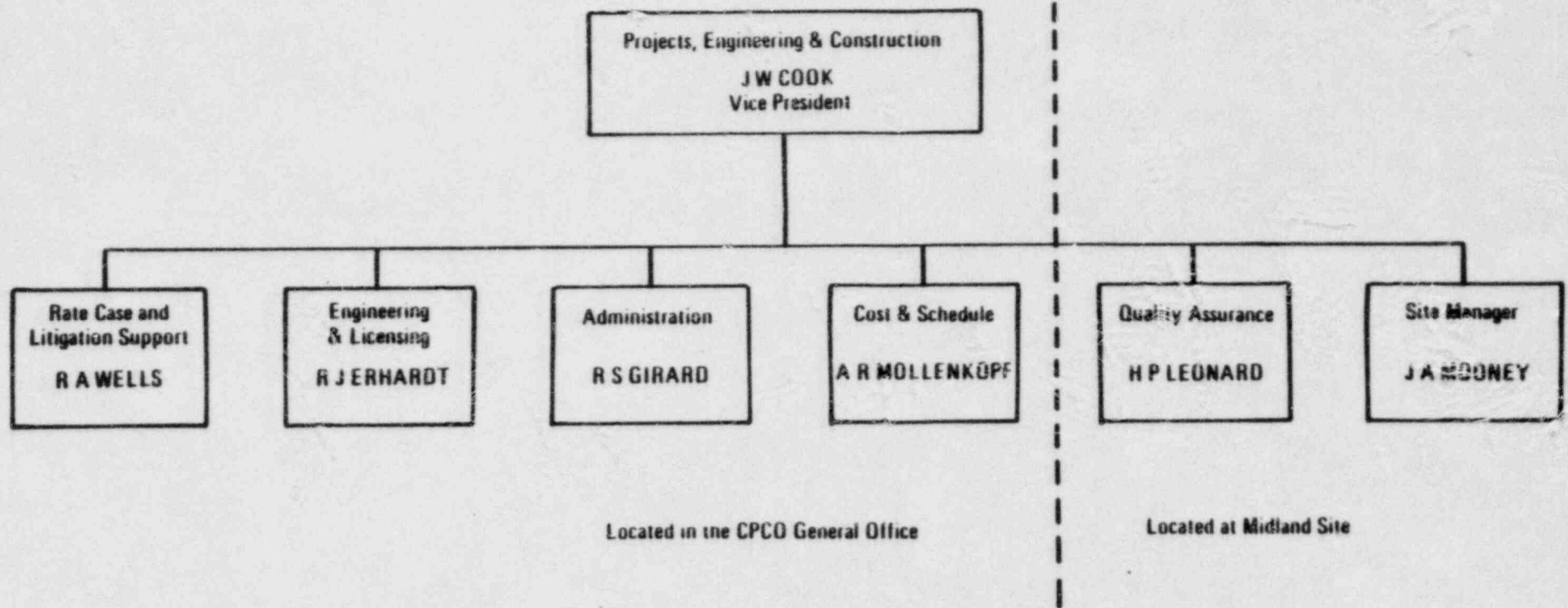
MIDLAND PROJECT  
SHUTDOWN REPORT

Day 31: August 24, 1984 - PERSONNEL STATUS

Category	Day 0 Level	Current Complement	Long Term Target
CPCo -			
Site	852	240	178
Contract	682	59	45
CPCo - G. O.			
PE&C	167	72	40
Contract	25	4	0
Bechtel - AAO	716	128	5
Bechtel - Site			
Non-Manual	2,024	163	12
Manual	151	162	0
Subcontractor			
Non-Manual	380	20	0
Manual	103	18	0
Project Total	5,100	866	280

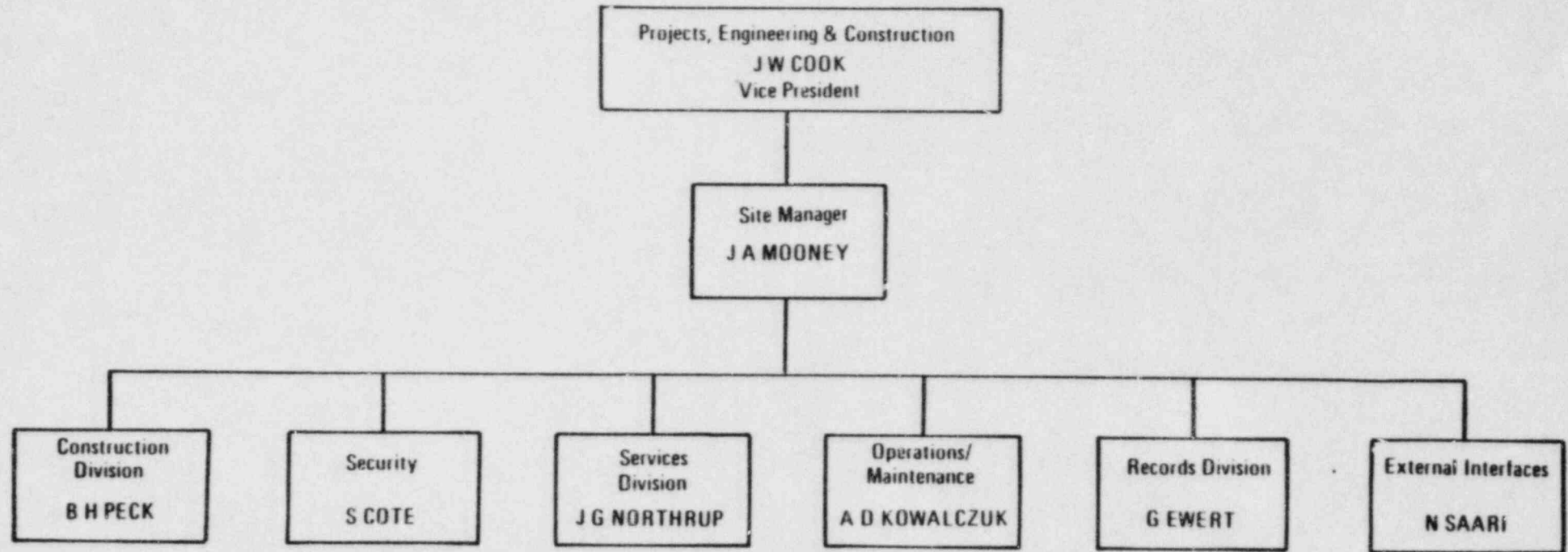
JWC-4  
8/24/84





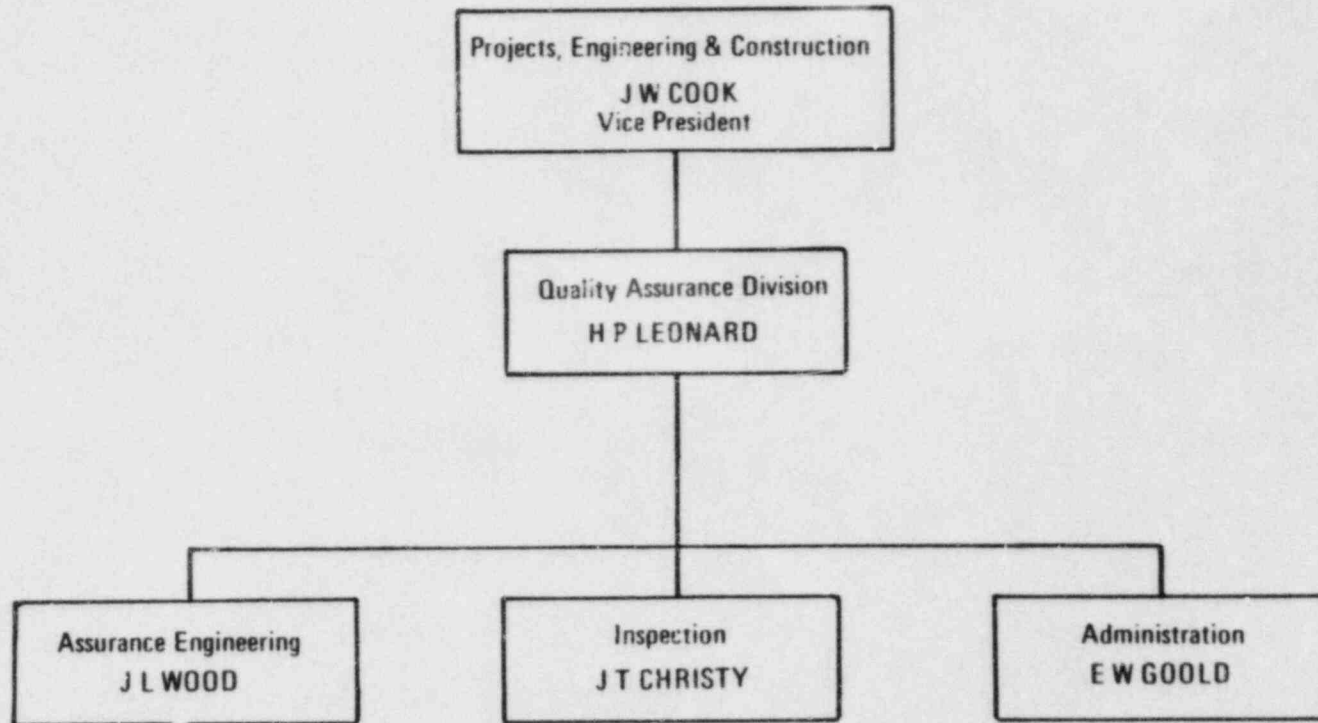
JWC-6  
8/24/84

SITE SHUTDOWN ORGANIZATION



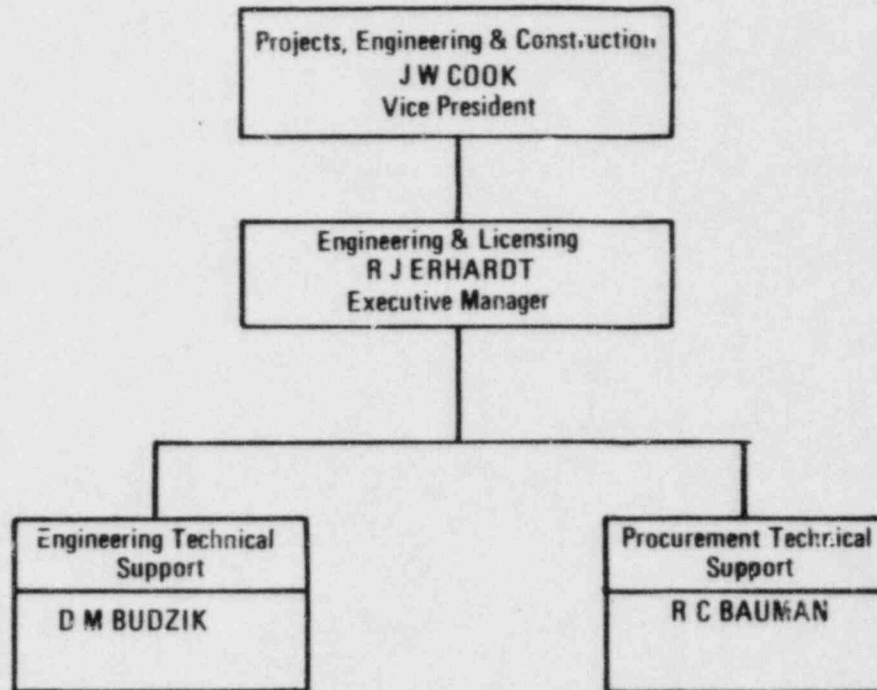
JWC-7  
8/24/84

QUALITY ASSURANCE DIVISION ORGANIZATION



JWC-8  
8/24/84

ENGINEERING & LICENSING DEPARTMENT



JWC-9  
8/24/84

MIDLAND ENERGY CENTER  
SHUTDOWN PLAN

- SOILS DEMOBILIZATION
- RECORDS
- PLANT LAYUP & MAINTENANCE
- SECURITY

jam1  
8-24-84

SOILS DEMOBILIZATION  
JULY 16, 1984 STATUS

- AUXILIARY BUILDING
  - 31 of 57 Temporary Piers Installed
  - 16 of 24 Grillages Installed
  - Mass Excavation Initiated in Access Shaft
  - No Permanent Wall
  
- SERVICE WATER PUMP STRUCTURE
  - Dewatering System Installed
  - Access Shaft Complete
  - Pier Excavation Not Started
  
- BORATED WATER STORAGE TANK
  - One Pour for Each Ring Remains
  
- SERVICE WATER PIPING
  - Train A 36" Pipe Replaced

jam2  
8-24-84

SOILS DEMOBILIZATION  
LAYUP PLAN

- AUXILIARY BUILDING
  - Stabilized Drift Excavations
  - Installed Mud Mat and Sumps
  - Developed Surveillance Program
  - Technical Services Agreement
  - Freezwall and Pond Dewatering
  
- SERVICE WATER PUMP STRUCTURE
  - Backfilled with Temporary Fill
  - Removed Dewatering System
  
- BORATED WATER STORAGE TANK
  - Backfilled with Temporary Fill
  
- DIESEL GENERATOR BUILDING
  - Completed Collecting Crack Data

jam3  
8-24-84

RECORDS  
PRINCIPLES AND POLICIES

- The Majority of Midland Quality Records are in the Established Document Control Centers.
  
- Capture, Collect and Provide for Retrieval of Documents Which, at the Time of the Shutdown, Were Not in a Document Control Center.
  
- Meet User Requirements During Shutdown Phase
  - Maintenance Activities
  - Rate Case
  - Litigation
  
- Accomplish Activities at Minimum Cost.

jam4  
8-24-84



RECORDS  
MAJOR ACTIVITIES

- CAPTURE/COLLECTION
  - Remove Personal Documents
  - Status Project Records and Return to Appropriate DCC
  - Box All Remaining Documents
  
- STORAGE
  - Documents Indexed with General Contents, Name of Employee, Function, Location, Etc.
  - Documents Placed in Interim Storage at Each Location
  
- FUTURE CONSIDERATIONS
  - Consolidation of Documents into a Single Storage Facility
  - Additional Sorting of Collected Documents

Jam5  
8-24-84

MAJOR COMPONENTS OF THE PLAN

PERSONNEL DESTAFFING AND PLACEMENT PROGRAM  
NRC LICENSING INTERFACE  
QUALITY ASSURANCE PLAN  
CONTRACTOR DEMOBILIZATION AND PLANT TURNOVER PLAN  
PLANT LAYUP AND MAINTENANCE PLAN  
SOILS DEMOBILIZATION PLAN  
SHUTDOWN RECORDS PLAN  
WAREHOUSING AND SALVAGE PLAN  
SECURITY PLAN  
CONTRACT AND PURCHASE ORDER CLOSEOUT  
RATE CASE AND LITIGATION SUPPORT  
BUDGET CONTROL AND CASH DISBURSEMENT PLAN  
LONG TERM PLANT MAINTENANCE AND SURVEILLANCE PLAN  
PROJECT REACTIVATION CRITERIA  
COORDINATION OF OFF-PROJECT ORGANIZATIONS

## RECORDS

### COMPLIANCE WITH STANDARDS

- Quality Records in Document Control Centers at Time of Shutdown Will Be Maintained in Accordance with Prior Commitments.
  
- Documents Collected, Boxed and Placed in Storage Do Not Fully Comply with Standards
  - Fire Protection Requirements
  - Index and Retrievable

jam6  
8-24-84

RECORDS  
SHUTDOWN SUPPORT

- Records Generated Prior to Shutdown Needed for Ongoing Activities are Being Identified and Collected.
  
- Records Generated During Shutdown Will Be Processed Utilizing Existing Corporate Records Management/Document Control Systems.

...

jam7  
8-24-84

PLANT LAYUP AND MAINTENANCE  
PRINCIPLES AND POLICIES

- Maintain the Licensability of the Plant
- Assume a Three to Five Year Shutdown
- Cash Requirements Should Be Minimized

jam8  
8-24-84

PLANT LAYUP AND MAINTENANCE  
GENERAL CRITERIA

- CARBON STEEL SYSTEMS FEEDING THE OSTG'S
  - Dry Layup with Dehumidified Air Purge
  
- STAINLESS STEEL AND OTHER CARBON STEEL SYSTEMS
  - Dry Layup
  
- PREVENTATIVE MAINTENANCE ACTIVITIES ARE BEING DEVELOPED USING THE FOLLOWING:
  - Zack Maintenance Program
  - B&W Field Construction Packages
  - Bechtel Storage and Maintenance Program
  - CPGO Periodic Activities Control System
  - Vendor Manuals
  - Experienced Gained by Other Utilities

jam9  
8-24-84

PLANT LAYUP AND MAINTENANCE  
CURRENT STATUS

- Continuing to Implement the Preshutdown Programs
- Bulk Draining of Systems Has Been Completed Except Those in Service and the Demineralized Water Tanks.
- Valve Lineup Checks to Assure System Low Spots are Drained. Completion: October 5, 1984.
- Area Inspections for Open Equipment. Completion: September 7, 1984.
- Entering Shutdown Activity Requirements into CPCo Work Management System. Completion: September 30, 1984.

Jam10  
8-24-84

## PLANT LAYUP AND MAINTENANCE

### ASME ACTIVITIES

- DOCUMENTATION
  - Record Index Developed
  - Deletions or Additions Must Be Itemized on the Record Index
  
- PHYSICAL WORK
  - Activities Require Knowledge and Participation of Bechtel/B&W QC
  - Bechtel/B&W QA Will Perform Routine Audits and Monitoring
  - Activities are Subject to Monitoring, Witnessing, Inspecting and Acceptance by Bechtel/B&W ANI
  - CPGCo May Disassemble/Reassemble N-stamped Components Subject to Section XI Requirements
  
- ASME MATERIALS
  - Will Remain Segregated
  - Record Will Be Kept of All Material Withdrawn or Added to Inventory



## SECURITY

- SITE PROTECTION
  - Provided Site Security on 24 Hours Per Day Basis
  
- SAFEGUARDS INFORMATION
  - In Secure Areas
  - Stating
  - Disposing of Duplicate Information
  - Minimum Information Retained
  
- SPECIAL NUCLEAR MATERIALS LICENSE
  - Fission Chambers Will Be Transferred to Palisades

Jam12  
8-24-84

MIDLAND ENERGY CENTER

QUALITY ASSURANCE

FOR THE

SHUTDOWN PHASE

PRESENTED TO USNRC

AUGUST 24, 1984

HANK LEONARD

CONSUMERS POWER COMPANY

ATTACHMENT 3

QUALITY ASSURANCE DIVISION

MISSION

SUPPORT THE PRESERVATION OF ASSETS, THE ABILITY TO RESTART AND THE LICENSABILITY OF THE MIDLAND ENERGY CENTER BY IMPLEMENTING A QUALITY ASSURANCE PROGRAM TO ASSURE THAT SHUTDOWN ACTIVITIES ARE CONDUCTED IN ACCORDANCE WITH ESTABLISHED REQUIREMENTS.

## GOALS

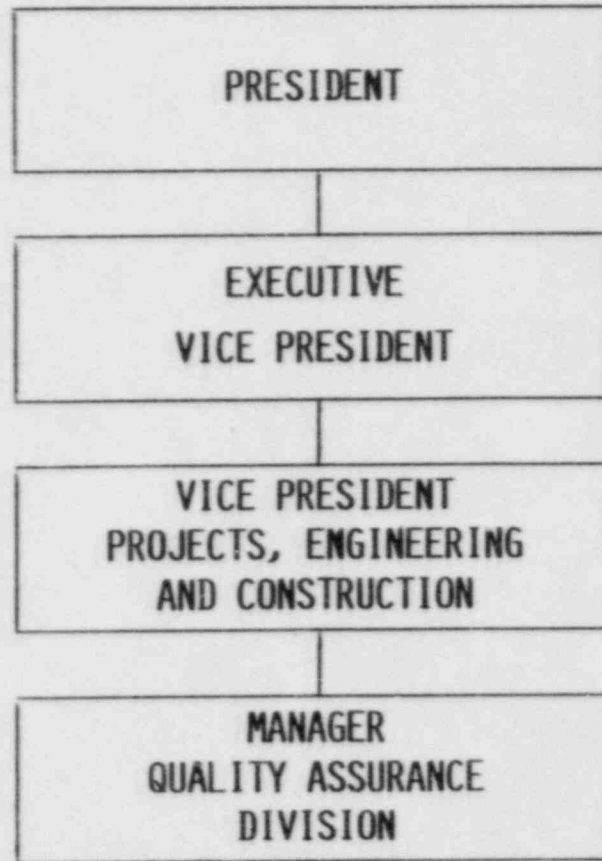
- EXECUTE THE ASSURANCE FUNCTIONS
- UTILIZE RESOURCES EFFECTIVELY
- MAINTAIN REGULATORY CONFIDENCE  
IN THE ASSURANCE PROGRAM

## QUALITY ASSURANCE PROGRAM PLAN

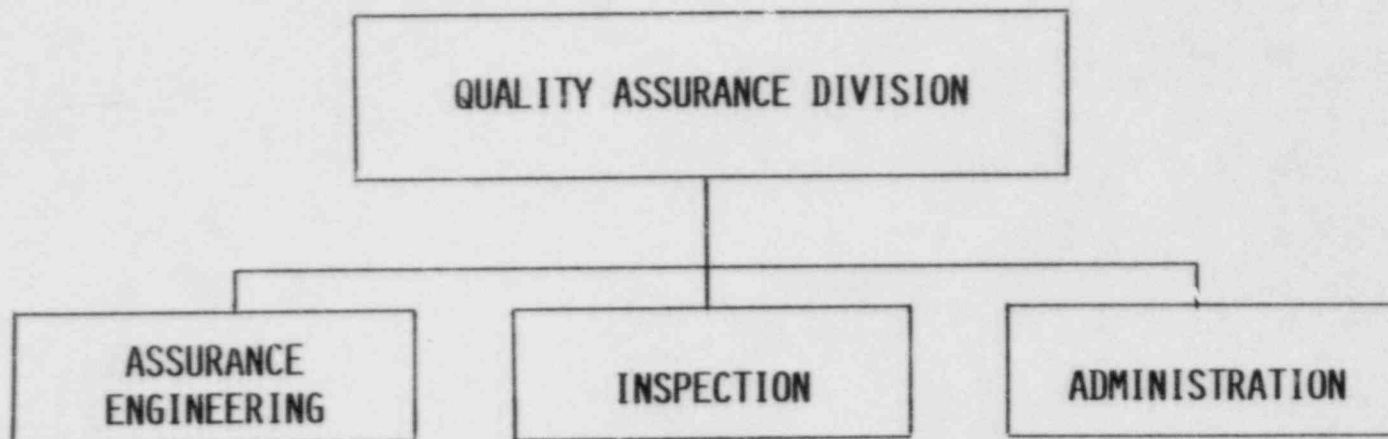
### FOR THE SHUTDOWN PHASE

- o CONSISTS OF 19 POLICIES TOTAL
  - ONE FOR EACH OF THE 18 CRITERIA OF 10CFR50 APPENDIX B
  - ONE ADDRESSING REPORTING REQUIREMENTS OF 10CFR21 AND 10CFR50.55(E)
- o REPLACES CPC-1A AND QA COMMITMENTS OF FSAR
- o ANTICIPATED SUBMITTAL TO USNRC BY OCTOBER 1, 1984

ORGANIZATION



ORGANIZATION



TOTAL STAFF

AS OF 8/24/84 37 CPCo + 1 BPCo

ESTIMATED FOR LONG TERM 16 CPCo + 1 BPCo + 1 B&W

## DESIGN CONTROL

- o CPCo IS NOW LEAD DESIGN ORGANIZATION
- o DESIGN IS STOPPED
- o DESIGN DOCUMENTS WILL BE USED IN THEIR CURRENT STATE
- o SHUTDOWN ACTIVITIES WILL HAVE SPECIAL PROVISIONS FOR DESIGN CONTROL



## NONCONFORMANCE MANAGEMENT

- o NONCONFORMANCES WILL BE IDENTIFIED, DOCUMENTED AND MAINTAINED AS RECORDS
- o EXISTING AND NEWLY GENERATED NONCONFORMANCE TYPE REPORTS WILL BE FURTHER PROCESSED ONLY IF NECESSARY TO SUPPORT SHUTDOWN ACTIVITIES

## REPORTING

- o CONDITIONS SUBJECT TO THE PROVISIONS OF 10CFR21 AND 10CFR50.55(E) WILL BE PROCESSED TO THE POINT OF MAKING THE REPORTABILITY DECISION.
- o IF REPORTABLE, TELEPHONE REPORT TO USNRC WILL BE MADE, DOCUMENTED AND MAINTAINED AS A RECORD.
- o FURTHER PROCESSING AND REPORTING WILL BE DONE ONLY IF NECESSARY TO SUPPORT SHUTDOWN ACTIVITIES.

QUALITY ASSURANCE DIVISION  
PROCEDURES

- TOTAL SCOPE IS APPROXIMATELY 27 PROCEDURES
- 18 PROCEDURES ARE IN REVIEW
- 9 PROCEDURES HAVE YET TO BE WRITTEN

QUALITY ASSURANCE DIVISION

FUNCTIONS

INSPECTIONS

AUDITS

REVIEWS

MONITORS

ANALYSES

## INSPECTION

- CPCo INSPECTION PROGRAM
- ANTICIPATE INSPECTIONS FOR
  - o SOURCE
  - o MAINTENANCE
  - o STORAGE
  - o RECEIPT
  - o SOILS
- INSPECTOR CERTIFICATION BY  
ACTIVITY

## QUALITY ASSURANCE SUMMARY

- o QA MISSION AND GOALS TO SUPPORT SHUTDOWN CONCEPT
  
- o QA PROGRAM PLAN
  - 19 POLICIES
  - REPLACES EXISTING COMMITMENTS
  
- o QAD PROCEDURES AND FUNCTIONS

MIDLAND SHUTDOWN  
LICENSING ACTIVITIES

ACTIONS TAKEN TO DATE BY CPCO

ITEMS FOR DISCUSSION WITH NRC STAFF

CONSTRUCTION PERMIT EXTENSIONS

ATOMIC SAFETY AND LICENSING BOARD

NOTIFICATION(S) OF PROJECT STATUS

SUSPENSION OF HEARINGS

APRIL 30, 1982 ORDER

SUBMITTAL OF NONCONFORMANCES

THIRD PARTY REVIEWS

MANAGEMENT APPRAISAL - CMP

IDCVP - TERA

CIO & SOILS - STONE & WEBSTER

CONSTRUCTION COMPLETION PROGRAM

ALAB-106 SUBMITTALS

NRC LICENSING REVIEW