



MISSISSIPPI POWER & LIGHT COMPANY

Helping Build Mississippi

P. O. BOX 1640, JACKSON, MISSISSIPPI 39205

July 3, 1984

NUCLEAR LICENSING & SAFETY DEPARTMENT

Office of Nuclear Reactor Regulation
U.S. Nuclear Regulatory Commission
Washington, D.C. 20555

Attention: Mr. Harold R. Denton, Director

Dear Mr. Denton,

SUBJECT: Grand Gulf Nuclear Station
Units 1 and 2
Docket Nos. 50-416 and 50-417
License No. NPF-13
File Nos. 0260/L-860.0
Organization and Qualifications
of Grand Gulf Management and
Staff
AECM-84/0340

By letter dated May 24, 1984, AECM-84/0283, Mississippi Power & Light Company (MP&L) provided proposed changes to the Offsite and Unit organization charts (Figures 6.2.1-1 and 6.2.2-1) contained in the Grand Gulf Nuclear Station (GGNS) Technical Specifications. Subsequently, in a telephone call from Mr. J. B. Hopkins of your staff, MP&L was requested to provide the names of the individuals associated with the positions shown in the revised organization charts. Additionally, MP&L was requested to provide the resumes of those individuals who held positions shown in the organization charts but whose resumes had not been previously submitted. Organization charts with names shown for positions were informally provided to Mr. Hopkins on June 15, 1984. The purpose of this letter is to formally provide the requested information.

The information requested by Mr. Hopkins is provided in the two attachments to this letter.

- o Attachment 1 provides copies of proposed Technical Specification Figures 6.2.1-1 and 6.2.2-1, annotated to identify the personnel currently assigned to the positions shown. On Figure 6.2.2-1, only those positions down to the level of Shift Supervisor (licensed SRO) are annotated to identify the specific individuals in those positions. This is in accordance with conversations with Mr. Hopkins.
- o Attachment 2 provides a list of those personnel named in Attachment 1 whose resumes have not been previously provided in either the Final Safety Analysis Report Chapter 13, AECM-83/0210, dated October 26, 1983, AECM-83/0716, dated November 7, 1983, or AECM-84/0207, dated April 18, 1984. The resumes of these personnel are also included. Certain resumes which are not available at present will be provided at a later date.

etEdb 1

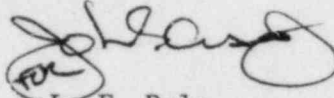
8407060165 840703
PDR ADOCK 05000416
P PDR

ber Middle South Utilities System

3021
11

If you have any questions concerning the information provided in the attachments or require further information please contact this office.

Yours truly,



L. F. Dale
Director

REW/JGC:db
Attachments

cc: Mr. J. B. Richard (w/o)
Mr. R. B. McGehee (w/o)
Mr. N. S. Reynolds (w/o)
Mr. G. B. Taylor (w/o)

Mr. Richard C. DeYoung, Director (w/a)
Office of Inspection & Enforcement
U. S. Nuclear Regulatory Commission
Washington, D.C. 20555

Mr. J. P. O'Reilly, Regional Administrator (w/a)
U. S. Nuclear Regulatory Commission
Region II
101 Marietta St., N.W., Suite 2900
Atlanta, Georgia 30323

ATTACHMENT 1 TO AECM-84/0340*

*The organization charts included in this attachment were previously submitted as a proposed change to the operating license by AECM-84/0283, dated May 22, 1984.

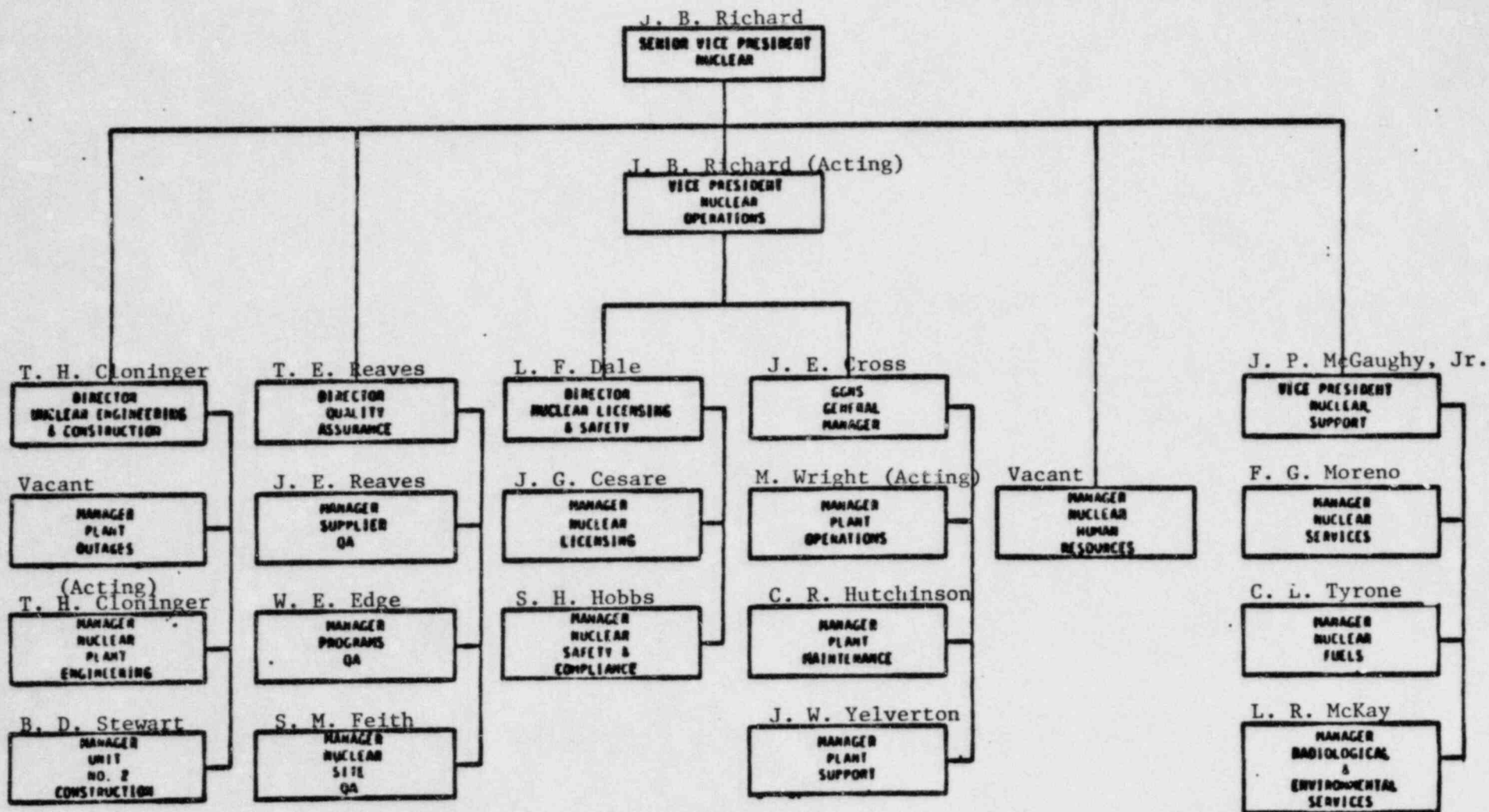
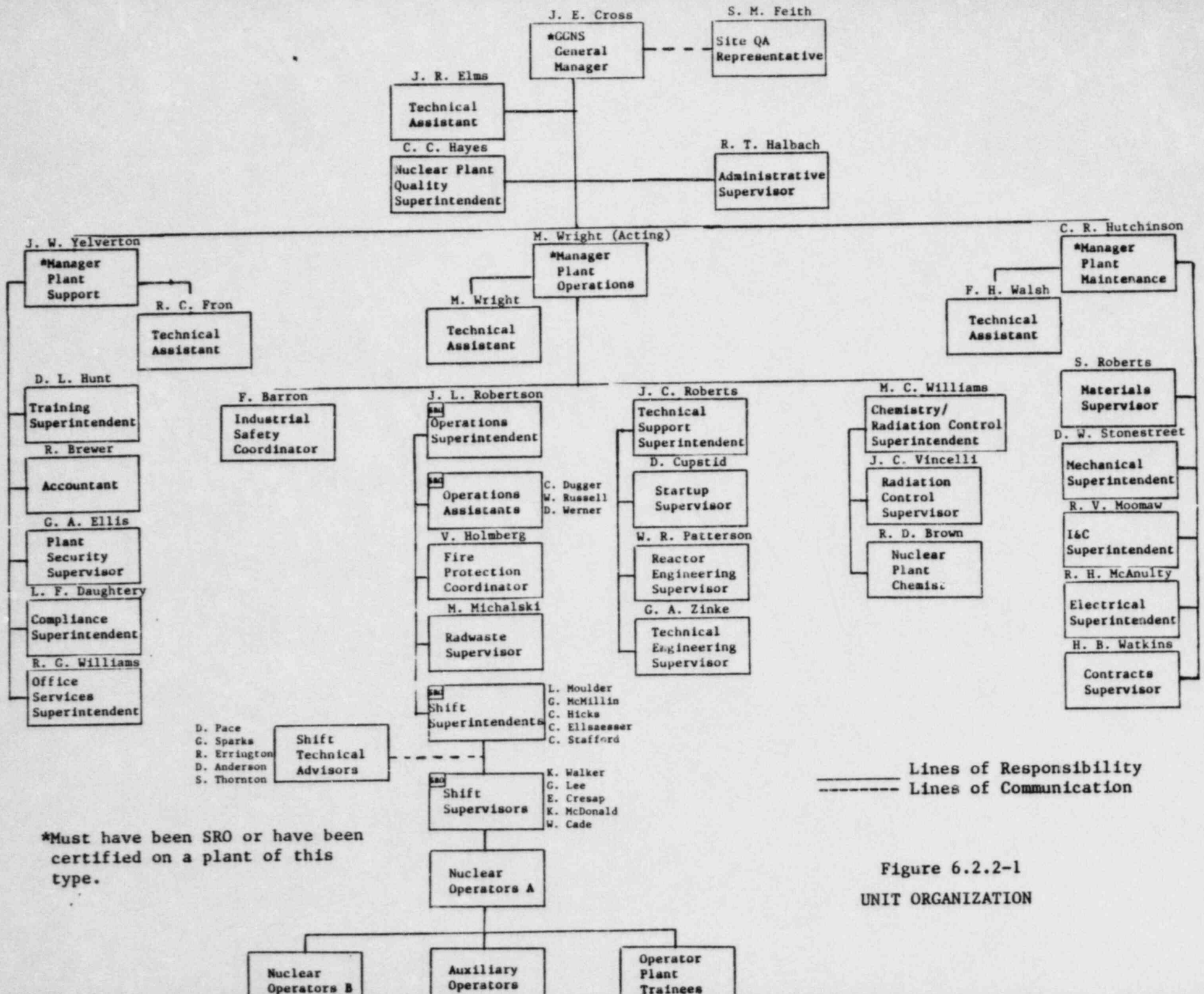


Figure 6.2.1-1
OFFSITE ORGANIZATION



*Must have been SRO or have been certified on a plant of this type.

—— Lines of Responsibility
 - - - - Lines of Communication

Figure 6.2.2-1
 UNIT ORGANIZATION

ATTACHMENT 2 TO AECM-84/0340

The resumes of the following personnel, with noted exceptions, are included with this attachment.

W. E. Edge
R. H. McAnulty
M. B. Michalski
F. G. Moreno
J. E. Reaves
B. D. Stewart
D. W. Stonestreet
J. C. Vincelli
G. A. Zinke*

*Resume not available at present.

GG
FSAR

Resume No.

Name: Wenstrom Everett Edge

Birthdate: 1948

Formal Education and Training:

B.S. Nuclear Engineering, Mississippi State University, 1971
Applied Evaluation Techniques for QA Effectiveness, 1974
QA Auditor Training, 1976
BWR Plant Design and Fundamentals, 1978
Lead Auditor Training, 1978
Certified Lead Auditor, ANSI N45.2.23, 1981
Registered Professional Engineer, State of Mississippi, 1976 - Number
6730
MP&L Manager/Supervisor School, 1983

Experience:

1972 - Present Mississippi Power & Light Company (MP&L), Jackson, Miss.

1972 - 1973 Engineer III in General Office assigned to review Preliminary Safety Analysis Report (PSAR), quality surveillance activities (including audits), and design review coordination for the Grand Gulf Nuclear Station (GGNS). Coordinated preparation and review of MP&L QA Manual for GGNS.

1973 - Northern States Power Company/MP&L

Test Engineer on assignment from MP&L to the Monticello Nuclear Generating Plant for several months. Performed local leak rate tests on all containment isolation valves, seals, hatches, airlocks, etc. and participated in the integrated leak rate test at the facility.

1973 - 1974 Engineer III in MP&L General Office responsible for coordination of NSSS design review for the PSAR and performance of quality audits, reporting, and follow-up on corrective action. Responsible for revision to MP&L QA Manual and QA procedures for GGNS.

1974 - 1975 Construction QA Representative for MP&L at the GGNS construction site. Responsible for initiation and implementation of site construction quality surveillance activities, including orientation/training of new surveillance personnel and interface with site construction quality personnel.

1975 - 1976 Quality Surveillance Field Supervisor for MP&L at the GGNS construction site. Responsible for preparation of MP&L construction quality procedures; interface with constructor QA/QC, Nuclear Regulatory Commission (NRC) personnel during audits, inspections, etc. and MP&L site construction reviews, audits, and quality surveillance activities. Participated in MP&L audits both internal and external as auditor or audit team leader.

Wenstrom Everett Edge - Continued

1976 - 1979 Quality Assurance Representative for MP&L in the General Office responsible for QA Program, QA Procedures, and off-site QA audits planning/scheduling for GGNS. Responsible for preparation/coordination of MP&L QA Topical Report Operations. Participated in a large number of MP&L audits internal and external as auditor or audit team leader. This included audits of all MP&L GGNS organizations; and the Architect-Engineer/Constructor, Nuclear Steam System Supplier, and other suppliers.

1979 - 1982 Program & Audits Coordinator for MP&L in the General Office responsible for planning and scheduling audits to verify compliance with all aspects of the MP&L QA program for GGNS and to assess its effectiveness; coordinating review of off-site organizations' procedures to assure quality requirements are addressed; QA Program/Procedures Manuals development, interpretation and maintenance; and planning and scheduling of training for QA personnel. Additional responsibilities include participation in MP&L audits internal (including security, health physics, training and staffing, emergency preparedness, and initial fuel loading) and external (suppliers, Architect-Engineer, Nuclear Steam System Supplier, etc.) as auditor or audit team leader.

1982 - Present Programs QA Manager for MP&L in the General Office responsible for:

Planning, scheduling, and implementation of audits to verify compliance with all aspects of the Operational QA Program for nuclear support organizations including Nuclear Plant Engineering, Nuclear Services, and for Emergency Preparedness audits of all organizations;

Coordinating review of nuclear support organizations' procedures to assure quality requirements are addressed;

QA Program/Procedure Manuals development, interpretation and maintenance;

Planning and scheduling of training for QA personnel;

Reporting to the NRC in accordance with the provisions of 10CFR21 and 10CFR50.55(e);

Coordinating responses to the NRC for inspection report violations/deviations for construction;

Tracking to resolution all QA nonconformance documents (including those which result from NRC violations); and for coordinating verification of completion of corrective action for such nonconformance documents.

Coordination/Preparation of Status Reports to management.

Wenstrom Everett Edge - Continued

Since 1973 has participated in more than 70 nuclear industry audits with 33 as audit team leader.

Since 1982 participated as MP&L auditor representative for Joint Utility Management Audits (JUMA) of participating nuclear utilities.

Name: Robert H. McAnulty

Birthdate: 1938

Formal Education and Training:

Electricians "A" School
Nuclear Power School
Operator Training, SIC Prototype
Nuclear Plant Welding
Bettis Atomic Power Laboratory
Engineering Officer of the Watch Training, SIC Prototype

Experience:

1955 - 1975 United States Navy

1955-1962

Various assignments as an instructor of Navy nuclear plant operators, as an electrician responsible for operation and maintenance of ship's electrical equipment, and as a student in several technical schools on operational theory and maintenance of electrical equipment, nuclear plant welding, nondestructive testing, Navy PWR design and operation, and on nuclear power plant chemistry and radiological controls.

1962-1965 Nuclear Submarine

Leading Electrician Responsible for preparation of all electrical plant operating procedures, developed preventive maintenance program, and operated electrical plant during initial startup and testing program and during plant normal operations.

1965-1968 Nuclear Plant Training Unit

Engineering Officer of the Watch As Watch Officer, directed preparation of procedures for and implementation of reactor plant testing programs. Additionally responsible for training of reactor plant supervisory personnel.

1968-1971 Nuclear Submarine

Chief Electrician Responsible for direct supervision of reactor plant operation, plant electrical maintenance planning, and scheduling training of plant operators and administration of all assigned personnel.

1971-1973 Naval Training Center

Nuclear Advisor As staff member of the Naval Bureau of Personnel responsible for administrative and technical liaison with Naval Schools Command for electrical training of nuclear designated personnel.

Robert H. McAnulty - Continued

1973-1975 Nuclear Submarine

Engineering Officer of the Watch and Engineering Watch Supervisor
Responsible for all electrical maintenance. Senior Engineering
Chief responsible for development and administration of the Nuclear
Training Program, and preparation and review of plant maintenance
and operating procedures.

1975 - 1976 Public Service Electric and Gas

Startup Test Engineer at Salem Nuclear Generating Station Units 1
and 2. Responsibilities included the development, testing, and the
startup of various systems including liquid waste, gaseous waste,
sampling, and feed chemical treatment.

1976 - 1978 Sargent and Lundy Engineers

Supervisor of Training Responsible for developing and implementing
a training program for the Nuclear Field Services Division. This
program includes system training, and the aspects of construction,
construction management, Startup and Testing, Project Control, and
Quality Assurance and Quality Control.

Previous assignment was Startup Test Engineer. Various software,
including preparation of test specifications, and procedures for
Wm. H. Zimmer Project.

1978 - 1984 Bechtel Power Corporation

1978-1980 Senior Startup Engineer - Grand Gulf Nuclear Station.
Responsibilities included initial energization and testing of the
following systems: 125VDC Dist., 13.8KV System, 6.9KV System,
Condensate Cleanup, Circulating Water, and Makeup Treatment System.

1980-1984 Preoperational Test Supervisor - Grand Gulf Nuclear
Station. Assigned to MP&L Startup to develop and supervise the
preoperational test on the Reactor Protection System, 4.16KV, 480VAC
Electrical Systems.

1984 - Present Mississippi Power & Light Co.

Electrical Superintendent. Responsible for providing overall
supervision of the Electrical department; including ensuring that
work activities are conducted in accordance with plant procedures
and special engineering generated written work instructions.
Assuring Engineering, Planning, and Scheduling support. Providing
direction to the Electrical Supervisors on day to day work activi-
ties. Assuring the training, qualification, and certification of
electrical maintenance personnel.

Resume No. 18

Name: Michael B. Michalski

Birthdate: 1948

Formal Education and Training:

Iowa Western Junior College - Clarinda, Iowa
Contract Plan Reading - Mississippi State Highway Department
Construction Math - Mississippi State Highway Department
U.S. Navy Schools - Gas Cutting and Welding School, Arc Welding School,
Sheet Metal Fabrication, Rigging and Splicing, Plans and Blueprint
Reading, Heavy Equipment School, Ambulance School, Survey School
York Air Conditioning - York, Pennsylvania
P & H Crane Schools - Mississippi Power & Light
Trane Air Conditioning - Mississippi Power & Light
Limiterque Maintenance School
Woodward Governor School - Fort Collins, Colorado
Parker Instrumentation and Fabrication School - Mississippi Power & Light
Three Month Maintenance School - Mississippi Power & Light
Supervisor Training School - Mississippi Power & Light
Radwaste Training and Observation - Brunswick Nuclear Power

Experience:

1968 - 1969 Midwest Steel Erection - Atlantic, Iowa

Crew Forman

1969 - 1970 United States Navy (Seebees)

Steel Worker Third Class - Construction of buildings, roads, and
bridges in Vietman.

1970 - 1971 Midwest Steel Erection - Atlantic, Iowa

Crew Forman - Supervised men in the erection of pre-fabricated steel
buildings. In charge of layout and construction.

1971 - 1973 Atlantic Municipal Utilities - Atlantic, Iowa

Maintenance Mechanic/Control Room Operator - Responsible for the
maintenance and operation of the plant's equipment and grounds.
Doing overhauls of the 5000kw and 3500kw, steam driven turbines.
Inclusive was the 4160 kw Nordberg dual fuel diesel. As Control
Room Operator, responsible for firing the Combustion Engineering
Boiler, and Bringing back-up diesel on line.

1973 - 1976 Mississippi State Highway Department - Ocean Springs, MS

Surveyor Forman - Responsible for layout work done on the road and
bridge projects. Worked directly for the project engineer. Duties
included setting grades and offset stakes, calculating pay
quantities, providing line and grade stakes for the various crafts

Michael B. Michalski - Continued

throughout the project, and performing final checks on all form-work before the placement of any concrete. Maintained a concrete log book containing all information concerning the concrete placed and its location as well as the subsequent test results.

1976 - 1979 Bechtel Nuclear Power Corporation - Grand Gulf, MS

Surveyor Forman - Responsible for all layout work done on the project. Worked directly for the Project Superintendent.

1979 - Present - Mississippi Power & Light - Grand Gulf Nuclear Station

Maintenance Mechanic - Have been responsible for qualifying Mississippi Power & Light's welding procedures for the Grand Gulf facility. Have supported several start-up supervisors in preparing their systems for turn over to Mississippi Power & Light for fuel load. While assigned to the tool room was responsible for pricing and purchasing tools and equipment for use in the plant.

Mechanical Supervisor - As Mechanical Supervisor, responsible to the Mechanical Superintendent for the supervision of fuel receipt and inspection. During this time supervised the major overhaul of Division I & II Emergency Diesels.

Radwaste Supervisor - Responsible to the Operations Superintendent for the supervision of all radioactive waste activities at the Grand Gulf Nuclear Station, including the performance of such duties as: implementing administrative controls necessary to assure that radioactive materials (solids, liquid, and gas) are processed, stored, shipped, and/or disposed of in accordance with the Station Operating License and other applicable regulations; development and implementation of administrative controls necessary to minimize the quality and maximize the quality of water inputs to the liquid radwaste system; development and implementation of required operating instructions for control of radwaste handling and equipment under normal, off-normal, and emergency conditions; assisting in the development and implementation of training programs required for Radwaste Operating Personnel; ensuring that the Water Inventory Control Station is adequately staffed to meet expected operations work load; monitoring day-to-day Radwaste Operations to ensure that they are conducted safely and in accordance with applicable procedures and regulations; ensuring the Radwaste surveillance requirements assigned to the Operations Section are performed in a timely manner; review and evaluation of operating reports, data, logs, and other information originated by Radwaste Operations; order, track, and coordinate the delivery of consumables required by Radwaste Operations and associated water treatment facilities; coordination of the shipment of radwaste materials for offsite burial; inspection of radwaste handling equipment for abnormal conditions and ensuring that corrective maintenance is accomplished, where applicable; informing management of all conditions affecting plant operations; and performing other duties as assigned by the Operations Superintendent.

GG
FSAR
RESUME NO. 98

NAME: Francisco G. Moreno

BIRTHDATE: 1940

FORMAL EDUCATION AND TRAINING:

BS, Business Management, Embry-Riddle Aeronautical University, 12/70-12/72, 2.92. Presently enrolled in MBA Program, Mississippi College (night courses). Anticipate completion within 2 years.

Military Education and Experience: Aviation Material Management, Personnel Management, Personnel Administration, Operations and Training, Logistics Management and Control, Service School Instructor and Aviation (Pilot) Instructor. Helicopter Rated (not current), 3000 hours flying experience. Retired from U.S. Army in the rank of Major.

EXPERIENCE: 1956 - 1980 U. S. Army

Positions at various locations included:

Intelligence Specialist (1959 - 1961), Intelligence Clerk (1961 - 1963), U. S. Army Officer (Pilot) (1964 - 1968), Service School Instructor (1968-1970), Combat Unit Commander (1970 - 1971), Airport Manager (1973 - 1974), Operations and Training Officer (1974 - 1975), Commanding Officer (1976 - 1977) Supply and Maintenance Management Chief (1977 - 1981), Advisor and Training Officer (1978 - 1980).

1980 - Present Mississippi Power & Light Co.
Jackson, Miss.

Quality Assurance Programs Coordinator (1981 - 1983)

Responsibilities included the participation in the development and revision of the MP&L Topical Program which defines the Company Quality Assurance Programmatic commitments. Also supervised the development and revision of QA internal operating procedures. Supervised personnel in the performance of quality reviews of Plant Staff operating procedures and Nuclear Plant Engineering procedures for adequacy in addressing programmatic commitments.

Quality Assurance Representative (11/80 - 4/82)

Performed audits of all Nuclear Production Department Sections to include Plant Staff, Nuclear Plant Engineering, the A/E Constructor (Bechtel), and Nuclear Services as well as Emergency Planning Procedures and Operations.

Certified Lead Auditor (4/81 - Present)

Supervised the preparation and development and performance of Quality Assurance internal and external audits on a regular basis.

Manager of Administrative and Business Services (1983 - Present)

Responsible for activities in the following areas:

- o Budget Forecasts
- o Budget data preparation, compilation and consolidation of the Plant Staff, Nuclear Plant Engineering and Nuclear Services organizations.
- o Construction Progress Reports
- o Cost Estimation
- o Cost Analysis
- o Operations Enhancement Report (Directed by NRC to improve operations)
- o Office Services Procurements
- o NSSS Invoice Tracking for Expenditure Monitoring
- o Full automation of the administrative tasks through installation of Word Processors and Personal Computers (an on going activity)
- o Total interface with the Quality Assurance Organization for resolution of nonconformances and concerns identified on nonconformance reports (Corrective Action Requests).
- o Supervision of development, revision, approval, review and issuance, of Nuclear Services and Nuclear Production Department Procedures.
- o Control of Nuclear Production Department Policy and Organization Manual (POM) and Nuclear Services Administrative Procedures Manual (NSAPM) as well as all other ancillary operating procedure manuals.

Name: James Earl Reaves

Birthdate: 1936

Formal Education and Training:

General Electric Manufacturing Studies Program
Auditor Training
Lead Auditor Training
Certified Lead Auditor, ANSI N45.2.23
MP&L Manager/Supervisor School

Experience:

1954 - 1964 United States Air Force

Radar Technician/Technical Instructor - Performed test and repair on ground controlled approach (GCA) radar (four years). Instructed operation and maintenance of radar sets (GCA) to USAF and allied students (six years).

1965 - 1968 General Electric Company, Bay St. Louis, MS

Instrument Calibration Technician - Calibrated and reworked instrumentation including gages, manometers, pressure transmitters, controllers, load cells, temperature, flow, and acceleration measuring devices. Performed stress analysis and strain gage installation.

1968 - 1971 General Electric Company, Bay St. Louis, MS

Instrument Calibration and Cleaning Specialist - Supervised five technicians in the calibration, testing, rework and precision cleaning of test equipment and instrumentation. Designed test set-ups and equipment to provide functional test prior to acceptance of a variety of test equipment being received at the National Space Technology Laboratories. Developed procedures to perform and document these efforts. Provided a quality control function on equipment and instrumentation related to the support of tanking and static firing the Saturn V stages. Provided review of drawings, manufacturers specifications and calibration requirements for equipment used in the calibration, testing rework, and cleaning processes. Developed and performed operations necessary for the fabrication and installation of instrument strain gages.

1971 - 1975 General Electric Company, Bay St. Louis, MS

Lead Calibration Technician - Worked closely with contractor personnel during installation and operational checkout of an Oceanographic Instrumentation Calibration Facility. Assisted in the development of acceptance tests and operating procedures. Responsible for performing and validating a major portion of the facility acceptance tests. Designed and supervised the fabrication, assembly, installation and checkout of a precision pressure measuring system

James Earl Reaves - Continued

for testing and calibrating ocean depth sensors. Supervised six technicians in the calibration and maintenance of Oceanographic Instrumentation, Rocket Testing Instrumentation, Explosive Testing Instrumentation and associated Laboratory Standards.

1975 - 1976 General Electric Company, Bay St. Louis, MS

Quality Control Specialist - Responsible for the development, implementation and maintenance of the overall quality system for the Laboratory Services section of the NASA Technical Services Laboratory. This included quality evaluation of specifications, procedures and design criteria; quality planning; audits; quality surveillance; procedure writing; non-conforming material control; quality analysis of component and system failures; interface with operations and customer representatives; Material Review Board representation; final buy-off and sell-off to customer (NASA) of reworked and calibrated test equipment. Joint supervision of 13 Calibration Technicians representing Quality Control.

1976 - 1977 Computer Sciences Corporation, Bay St. Louis, MS

Technical Specialist - Responsible for the development of test methods and procedures for testing prototype oceanographic and meteorological instrumentation. Coordinated and supervised special instrumentation measurement projects in support of various government agencies located at the National Space Technology Laboratories.

1977 - Present Mississippi Power & Light Company, Jackson, MS

1977-1979 Quality Assurance Representative - Same as Quality Assurance Coordinator with addition of maintaining the nonconformance open items list, coordinated completion of corrective actions with responsible organizations.

1979-1982 Quality Assurance Coordinator/Senior Quality Assurance Representative - Responsible for supplier quality including supplier QA program evaluations, supplier QA audits and review of MP&L direct procurements for GGNS. Participated in numerous internal and supplier audits as auditor or audit team leader. This included audits of all MP&L GGNS organizations; the Architect-Engineer/Constructor, Nuclear Steam Supply System vendor, and other suppliers. Accompanied Architect-Engineer/Constructor on audits of suppliers to evaluate the performance and effectiveness of the Architect-Engineer/Constructor audit teams. Acted in capacity of Manager of Quality Assurance in his absence.

James Earl Reaves - Continued

1982-Present Manager, Supplier Quality Assurance - Responsible for review of off-site initiated procurement documents; monitoring MP&L direct procurement activities; monitoring Architect-Engineer/Constructor procurement activities; quality survey and evaluation of potential suppliers; planning and scheduling supplier audits to verify compliance with procurement document requirements; and internal procurement cycle audits on all MP&L departments associated with GGNS. Act in capacity of Director of Quality Assurance in his absence.

Resume No.

Name: Benjamin Dean Stewart

Birthdate: 1944

Formal Education and Training:

B.S. Mechanical Engineering, Missouri School of Mines, 1967

Experience:

1967 - 1970 Bechtel Power, Inc., San Francisco, California

Field Engineer - Responsible to ensure material specifications and drawings were complied with during construction of a 2400 MW 4-Unit coal-fired generating station at Labadie, Missouri for Union Electric Co. Reported to Project Field Engineer.

1970 - 1973 Brown & Root, Inc., Houston, Texas

Sr. Mechanical Engineer - Served as a field engineer, craft superintendent and start-up engineer during the construction and start-up of a 700 MW coal-fired generating unit at Roxboro Generating Station, Roxboro, N.C. for Carolina Power & Light. Responsibilities included compliance with specifications and drawings, maintaining schedule, and budget compliance. Reported to the Project Field Engineer.

1973 - 1979 Stearns-Roger, Inc., Denver, Colorado

Manager, Resident Engineering - Manager of the Resident Engineering Group which was responsible for design compliance and field design changes during the construction and start-up of a 125 MW coal-fired generating unit for Nevada Power Co. at Moapa Generating Station, Moapa, Nevada.

Lead Mechanical Start-up Engineer - Responsible for supervising mechanical start-up activities during the start-up of a 410 MW coal-fired generating unit at the Huntington Plant, Huntington, Utah for Utah Power & Light.

Start-Up Engineering Manager - Responsible for all start-up activities during the start-up of a 410 MW coal-fired unit for Colorado-Ute at the Yampa Valley Plant, Craig, Colorado. Reported to the Corporate Start-Up Manager.

Resident Administrator - Responsible for specification development and contract administration for construction of a 145 MW oil-fired unit of the Kahe Power Plant for Hawaiian Electric Co. Inc., Honolulu, Hawaii. Also participated in design of the plant prior to site mobilization.

Benjamin Dean Stewart - Continued

1979 - Present Middle South Services, New Orleans, LA

Field Construction Engineer - Mechanical - Participated in the development of a Construction Management System to be used to support management of constructing electricity generating stations.

Construction Manager - Responsible to monitor the prime contractor to ensure that project objectives comply with company objectives and that they are being met. This is accomplished by monitoring construction schedule development, budget development and construction activities. The project is the Grand Gulf Nuclear Station at Port Gibson, Mississippi for Mississippi Power & Light. The Construction Manager reports to the Director of Nuclear Project Engineering and Construction.

Professional Memberships:

National Society of Professional Engineers
Registered Professional Engineer

Resume No.

Name: David W. Stonestreet

Birthdate:

Formal Education and Training

Bachelor of Electrical Engineering Technology (Major), Business Administration (Minor), Mississippi State University, 1973
Graduate work in Industrial Engineering, Mississippi State University Extension, Jackson, MS, 1977

Company sponsored courses included: Nuclear Power Plant Observation Training, Power Plant Principles, Basic Reactor Fundamentals, Power System Coordination, Metal Clad Switch Gear, Low Voltage Switchgear, Machinery Vibration, Power Systems Protective Relays, BWR/6 Plant Design Fundamentals, Grand Gulf Technology - Engineer's Course, Grand Gulf Startup Engineer's Course, Plant Quality Assurance Training, Supervisor Leadership Skills, Process Instrumentation

1973 - Texas Instruments Incorporated

Applications Engineer - Duties consisted of transistor circuit design, component testing, and customer interfacing.

1974-1975 - Self-Employed

Self-employed in an electrical contracting business. Duties consisted of field work, purchasing, customer interfacing, design and installation of electrical systems, and other business related activities.

1975 - Present Mississippi Power & Light Company, Grand Gulf Nuclear Station

Electrical Maintenance Engineer - Duties consisted of formulating maintenance staff plans; preparing electrical and mechanical maintenance procedures; evaluating and recommending equipment spare parts; coordinating records and schedules for maintenance support equipment; development of plant electrician and instrument personnel training program.

Startup Test Supervisor - Duties consisted of developing and writing startup acceptance and preoperational test procedures for assigned electrical and turbine/generator systems; coordinating plant electrical energization activities; providing assistance to plant maintenance organization in the area of electrical meter and protective relay testing; evaluating and reporting assigned system construction and testing status.

David W. Stonestreet - Continued

Startup Group Leader - Supervised Startup Engineers Responsible for turbine/generator, main step-up transformers, and isophase bus systems. Directed the electrical/electronic checkout of the turbine/generator systems; directed the turbine lube oil and electro-hydraulic control fluid flushes; implemented system design changes to enhance system operation.

Assistant Manager, Nuclear Plant Engineering - Assigned to GE-NED in San Jose, CA. As the company resident engineer for approximately thirty engineers in the completion of bulk build and testing of the main control room (PGCC). Responsible for the transition from construction/startup phase to turnover and acceptance by plant staff of the main control room.

Punchlist Manager - Reporting to the Plant Manager, responsible for developing the system punchlist during the transition from startup to plant staff for all Phase 1 Systems. Performed evaluations on open punchlist items for required implementation prior to fuel load. Established interface with Startup, Plant Staff, QA, Engineering, and NRC on resolution of open items.

Unit 2 Project Engineering Supervisor - Reporting to the Unit 2 Project Manager, responsible for all project engineering coordination for the re-start of Unit 2. Involves engineering interface among Site Management, A-E/Contractor, Sub-Contracts, and NSSS Vendor.

Mechanical Superintendent - Nuclear. The Mechanical Superintendent is responsible, for but not limited to:

- A. Supervising and directing the activities of all mechanical maintenance personnel and laborers. Coordinates mechanical maintenance efforts with related plant work to utilize personnel in the most productive manner. Formulates and follows efficient work schedules. Plans work to make the most efficient work schedules. Plans work to make the most efficient use of all resources. Keeping a written record of all projects undertaken.
- B. Making inspections of all station mechanical equipment, buildings and grounds so as to maintain safe and efficient operating conditions. Assisting with diagnosis of faults in equipment and appurtenances and making recommendations for corrective action as necessary.
- C. Coordinating and directing the work to contractor maintenance personnel as necessary to ensure efficient completion of assigned tasks.
- D. Assisting in developing and implementing an effective program for preventive and corrective maintenance.

David W. Stonestreet - Continued

- E. Assisting in procurement of spare parts, maintenance support equipment, and special tools.
- F. Providing essential information for maintenance record files. Prepares maintenance reports as required.
- G. Ensuring that all mechanical maintenance work is performed in a safe manner free from accidents and personal injury. Sees that safety procedures are followed consistently. Trains personnel in safe personal conduct and work practices. Sees that regular safety meetings are held.
- H. Using sound housekeeping practices to maintain plant equipment, buildings and grounds in a neat, orderly and safe condition.
- I. Assisting in the development of an effective mechanical maintenance training program for station personnel.
- J. Making recommendations as to hiring, promoting and separation of employees supervised. Periodically rating each employee's job performance.

Resume No. 43

Name: John C. Vincelli

Birthdate: 1952

Formal Education and Training:

Navy Nuclear Power Program; 3½ years college; Health Physics Training Program at GGNS (3 mo.); several short courses in applied radiological protection (respiratory protection, emergency planning, radwaste disposal, BWR systems).

Experience:

1973 - 1979 U.S. Navy

Lead ELT - Supervised the ships' radiological controls and chemistry programs. Also trained ships' personnel in health physics, chemistry and electrical fundamentals. Was also qualified Shutdown Reactor Operator and Electrical Operator.

Additional experience included Radiation Controls Supervisor for steam generator inspection teams and service on a subtender as a Radiation Controls Monitor.

1980 - Present Mississippi Power & Light Co., Jackson, MS

Radiation Controls Supervisor - Responsible for the development and implementation of an effective radiological protection program at GGNS. This program includes dosimetry, contamination control, respiratory protection, ALARA, emergency planning, radwaste disposal, and radiological engineering.

Previous GGNS experience includes development of a respiratory protection program and emergency preparedness program. As Site Emergency Planning Coordinator coordinated the successful completion of GGNS's first NRC Emergency Preparedness Appraisal.

Additional experience includes four months as a Senior HP Tech at Hatch Nuclear Power Station during a refueling outage.