

Please return to:
Blonia Bennington
55-881

SAFEGUARDS INFORMATION

JUN 25 1984

SGMT:CRH
05000128500R

Texas A and M University System
ATTN.: Mr. H. J. Deigl
Senior Health Physicist
F. E. Box 89
College Station, TX 77843

~~SAFEGUARDS INFORMATION
Unauthorized disclosure subject to
Administrative and Criminal Penalties.~~

Enclosure has been sanitized

~~When separated from enclosure
, HANDLE THIS DOCUMENT AS~~

~~DECONTROLLED
(insert proper classification)~~

Gentlemen:

This is in regard to your request for approval of a route to be used for transport of spent reactor fuel as contained in your letters of July 14, 1983 and July 25, 1983.

The proposed route requested in your letters of July 14, 1983 and July 25, 1983 is judged to meet the regulatory requirements in accordance with 10 CFR 73.37 for shipments of spent fuel and is approved.

Please note that assuring highway safety is the responsibility of the licensee and carrier and our approval is not intended to provide relief in this regard. Furthermore, the approval does not guarantee that there will be no local or state legislation applicable to the route that restricts or prohibits the movement of radioactive material.

During seasonal periods when inclement weather with accompanying hazardous road conditions can occur with short notice, the appropriate state police should be contacted with regard to road conditions before a shipment commences.

The initial arrangements with law enforcement agencies along the route, as required by 10 CFR 73.37(a)(2), have been completed by the NRC staff. Data relating to these arrangements and a copy of the approved route are enclosed.

This information is to be incorporated into your shipment plan and provided to your carrier along with instructions regarding its use.

Please note that the notification requirements of 10 CFR 73.37(f) and 73.72 for each shipment still apply. When making a notification to a governor or his designee it should be very specific especially with regard to notification of series shipments. Written notification must designate exactly how many individual shipments are to be included. In the event the number of shipments in a series is revised, the change notification should indicate that it is a revision of the original notification and an increase in the number of shipments. In addition, the change notification should specify that the date the information can be decontrolled for any of the shipments in the revised series is ten days after the arrival at the destination of the last shipment in that series.

8406280339 840625
PDR ADOCK 05000129
F PDR

SAFEGUARDS INFORMATION

OFFICE					
SURNAME					
DATE					

~~SAFEGUARDS INFORMATION~~

Mr. H. J. Deigl

- 2 -

JUN 25 1984

Should you require additional information or have questions concerning this matter, please contact Charles Hillman of my staff (301-427-4186).

Sincerely,

Theodore S. Sherr

Theodore S. Sherr, Chief
Material Transfer SG Licensing Branch
Division of Safeguards, NMSS

Enclosure:
As stated

Idaho Falls/College Station
OE000128500R

DISTRIBUTION:

w/enclosure:
Docket File/50-128
Case File/50-128
Region IV

w/o enclosure:
SGMT r/f
Subj. File #3.18
NMSS r/f
Fonner
LCRouse
DWeiss
CHillman

Route only:
SGagner, PA

Sanitized copy:
PDR

SGMT
CRHi Hillman
6/22/84

Carl Hillman
SGMT
CKNulsen
6/22/84

Sherr
SGMT
TSSherr
6/22/84

~~SAFEGUARDS INFORMATION~~

SPE.IT NUCLEAR FUEL ROUTE

Idaho Falls, ID

to

College Station, TX

June 1984

ROAD TRANSPORTATION ROUTE
Idaho Falls, ID to College Station, TX

IDAHO

1. Idaho National Lab to US 20; US 20 east/south to US 26*	3 miles
2. US 26 south to I-15*	34 miles
3. I-15 south to Utah State Line	92 miles
Subtotal	<u>129 miles</u>

UTAH

4. I-15 south to I-80N/84	56 miles
5. I-80N/84 south to I-80	35 miles
6. I-80 east to Wyoming State Line	29 miles
Subtotal	<u>120 miles</u>

WYOMING

7. I-80 east to I-25	361 miles
8. I-25 south to Colorado State Line	8 miles
Subtotal	<u>369 miles</u>

COLORADO

9. I-25 south to I-76	84 miles
10. I-76 east to I-270	1 mile
11. I-270 east to I-70	5 miles
12. I-70 east to Kansas State Line	170 miles
Subtotal	<u>260 miles</u>

KANSAS

13. I-70 east to I-135	250 miles
14. I-135 south to I-235	83 miles
15. I-235 south to I-35	16 miles
16. I-35 south to Oklahoma State Line	42 miles
Subtotal	<u>391 miles</u>

OKLAHOMA

17. I-35 south to Texas State Line	236 miles
------------------------------------	-----------

TEXAS

18. I-35 south to I-35E	37 miles
19. I-35E east/south to I-635	27 miles
20. I-635 east/south to I-45	35 miles
21. I-45 south to US 190	136 miles
22. US 190 west to TX-6*	36 miles
23. TX-6 south to TX Bus 6*	9 miles
24. TX Bus 6 north to FM 2818*	1 mile
25. FM 2818 west/north to FM 2347*	4 miles
26. FM 2347 west to Texas A&M Facility*	2 miles
Subtotal	<u>287 miles</u>

TOTAL MILES 1,792 miles

* Access to or exit from Interstate or State Preferred Routes.

FOOD AND FUEL STOPS

The businesses and locations listed below were identified by the NRC route analysis teams as possible food and fuel stops. All possible stops along the route are not listed. Only a few of the locations were visited by the NRC teams. In order to be listed, food and fuel stops were required to be close to the route.

IDAHO

1. Paris Truck Stop. I-15, Exit 67, Pocatello.
2. Flags West Truck Stop. I-15, mm 31, Melard Cty.

UTAH

1. Cross Roads Truck Stop. I-15. Tremonton.
2. Flying J Truck Stop. I-15, 21st St. exit, Ogden.

WYOMING

1. Multiple Truck Stops. I-80, Rick Springs.
2. Multiple Truck Stops. I-80, Rawlings.
3. Truck Stop. I-80, Walcott exit.
4. Multiple Truck Stop. I-80, Cheyenne.

COLORADO

1. Multiple Truck Stop. I-25, Ft. Collins.
2. Tomahawk Truck Stop. I-70, mm 295, Walkins.
3. Limon Getty Truck Stop. I-70, mm 359, Limon.
4. Limon Husky Car/Truck Stop. I-70, mm 361, Limon.

KANSAS

1. Goodland Husky Car/Truck Stop. I-70, mm 17, Sherman Cty.
2. Amoco Truck Service Center. I-70, mm 127, Trego Cty.
3. Arco "Big Bear" Truck Stop. I-70, mm 193, Russel Cty.
4. Conoco Truck Stop. I-135, mm 92, Salina, Saline Cty.
5. Newell Truck Plaza. I-135, mm 31, Harvey Cty.

OKLAHOMA

1. Conoco Truck Stop. I-35, mm 186, Noble County.
2. Fina Truck Stop. I-35, mm 64, Garvin County.

TEXAS

1. Conoco Truck Stop. I-35, mm 501, Cooke Cty.
2. Ecol Truck Stop. I-35, mm 471, Denton Cty.
3. Union 76 Truck Stop. I-45, mm 249, Ellis Cty.
4. Phillips 66 Station. I-45, mm 229, Navarro Cty.
5. Charles Truck Stop. I-45, mm 197, Freestone Cty.
6. Green Diamond Truck Stop. I-45, mm 179, Leon Cty.
7. Texaco Diesel Fuel. I-45, mm 142, Mason Cty.

Hoodo

HOODO
PHONE NUMBER:

HOODO FALLS
SP(206)522-5141

POCATELLO
SP(206)277-1426

Course:

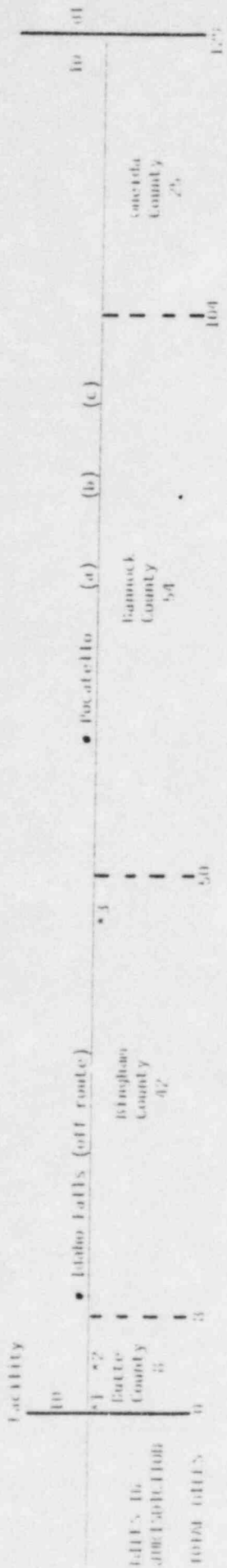
CH 9, 19, R

CH 9/19

Unit:

SP

SP



POINTS TO
BE COVERED

TOTAL MILES 257

KEY

- Law Response Center
- ▬ Highway Patrol/State Police
- Sheriff
- City Police
- ▬ County Police
- ▬ CB Radio Monitored (Base)
- ▬ CB Radio Monitored (Car)
- ▬ Channel Monitored
- ▬ React Group
- ▬ Mobile Telephone (Disable)
- ▬ Escort Required

ROAD RECOMMENDATION TABLE - Idaho Falls, Id to College Station, TX

- *1. Idaho National Lab to US 20, US 20 east/south to US 26 (3 miles);
- *2. US 26 south to I-15 (30 miles);
- *3. I-15 south to Utah Line (92 miles);

UTAH

EMERGENCY
PHONE NUMBERS:

TREMONT
HP(801)723-7614

BRIGHAM CITY
HP(801)723-7614
734-9414
{Port of Entry}

UGDEN
HP(801)479-9290

ECHO
HP(801)289-3122

MORGAN
S(801)829-3745

Comm:

MT CH 19/9

R CH 9
CH 9/19

MI, R
CH 9/19

CH 9/19

LEA:

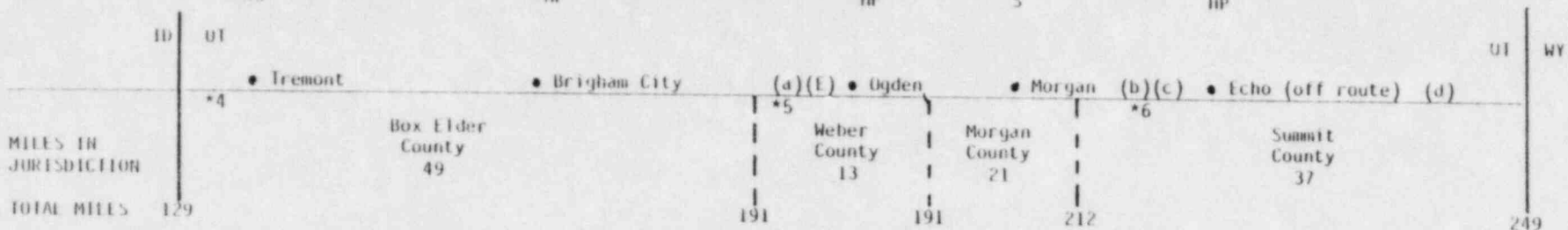
HP

HP

HP

S

HP



KEY

- LEA Response Center
- HP/SP Highway Patrol/State Police
- S Sheriff
- CP City Police
- C'P County Police
- CB Radio Monitored (Base)
- CB Radio Monitored (Car)
- CH/HD Channel Monitored
- R React Group
- MI Mobile Telephone (Useable)
- E Escort Required

ROAD TRANSPORTATION ROUTE - Idaho Falls, ID to College Station, TX

- *4. I-15 south to I-80N/84 (56 miles);
- *5. I-80N/84 south to I-80 (35 miles);
- *6. I-80 east to Wyoming Line (29 miles);

HYPERLOG

Statewide: 800-442-9898

FOR ESTATE
PUBHE BURIALS:

EVANSVILLE
HP (307) 769-2141
(5am-5pm)
S (307) 769-2341

ROCK SPRINGS
HP (307) 332-6621
(5am-5pm)
S (307) 362-6900

RAVALLI
HP (307) 324-5345
S (307) 324-7776

CHUBBIE
HP (307) 442-6625
S (307) 442-6626
6:34-7:54

COMM: HP [] CH 9/19, R

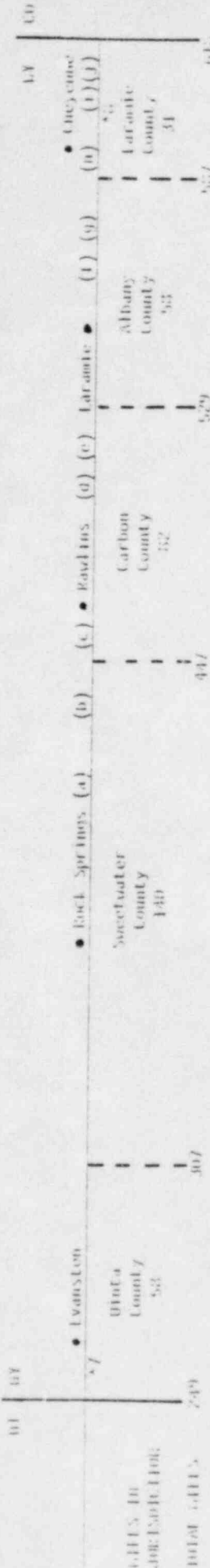
HP [] CH 9/19, R

HP [] CH 9/19, R
R (307) 442-6625

LEADS: HP []

HP []

HP []



ROAD MAPS/PARTIAL HIGH ROUTE - Idaho Falls, ID to College Station, TX

- HP/SP Highway Patrol/State Police
- HP City Police
- HP County Police
- HP Radio Monitored (base)
- HP Radio Monitored (Car)
- HP Channel Monitored
- HP React Group
- HP Mobile Telephone (Useable)
- HP Escort Provided

- * 1. 1-30 east to 1-25 (36.1 miles);
- * 2. 1-25 south to Colorado (33 miles);

FOR RICHIEY
PHONE 408341 ES;

CAR RECORD

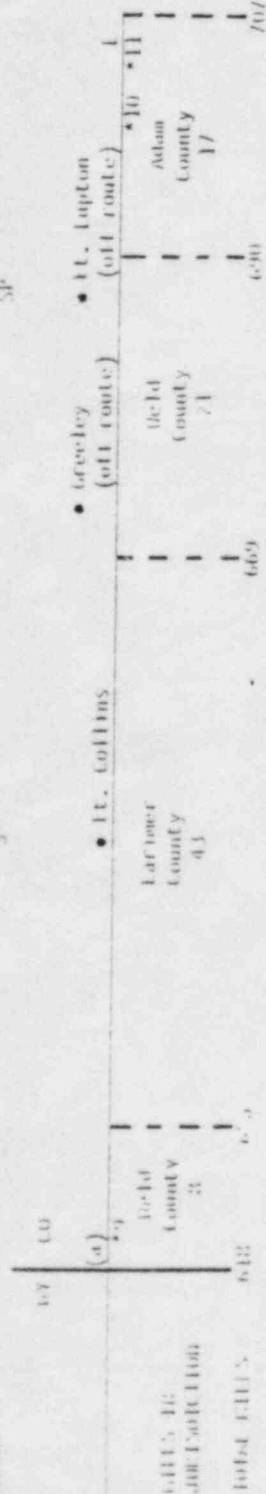
11. COLLETS
SP(30)451-4070

GREENEY
(30)353-1151

11. TOPLOM
SP(30)353-1151

Color: CB 9/19 CB 9/19, R CB 9/19, R CB 9/19, R

HEAV: SP



ROAD RECONSTRUCTION ROUTE - Idaho Falls, ID to College Station, TX

- IFA Response Center
- Highway Patrol/State Police
- Sheriff
- City Police
- County Police
- CB Radio monitored (Base)
- CB Radio monitored (Car)
- Channel monitored
- Scout Group
- mobile telephone (Useable)
- Escort Required

- *9. I-26 south to I-76 (34 miles);
- *10. I-76 east to I-270 (1 mile);
- *11. I-270 east to I-76 (5 miles);

ROADS

HAYS
SP(913)625-3513

CD 9, R
SP

CD	TH	(a)	(b)	(c)	(d)	(e)	(f)	(g)	(h)
913	913	Shelburn County 35	Thomas County 40		Grove County 38	Fresno County 31	Lillis County 37	Russell County 30	Lillicoat County 23
TOTAL HAYS	273	913	913	991	1022	1054	1107		

ROAD REPRESENTATION ROAD - Idaho Falls, ID to College Station, TX

*13. 1-70 east to I-15 (250 miles);

787

COOPERATIVE
PHONE RECORDS

County:
HAYS

KEY

- Ho. Response Center
- UP/SP Highway Patrol/State Police
- UP County Police
- UP Sheriff
- CB Radio Monitored (Base)
- CB Radio Monitored (Car)
- CB Radio Monitored (Group)
- CB Radio Monitored (Mobile)
- CB Radio Monitored (Useable)
- CB Radio Monitored (Unusable)

UNITED STATES DEPARTMENT OF JUSTICE

AMERICAN SAVINGS BANK

LIBRARY
SP 115-7354

///MT MARGINAL//

Case: 11-12-41 11-12-41

FILE: 70/711

TABLE 11
AMERICAN SAVINGS BANK

TABLE 11	AMERICAN SAVINGS BANK	AMERICAN SAVINGS BANK	AMERICAN SAVINGS BANK	AMERICAN SAVINGS BANK
(a)	(b)	(c)	(d)	(e)
11-12-41	11-12-41	11-12-41	11-12-41	11-12-41
Adams County	Adams County	Adams County	Adams County	Adams County
7	7	7	7	7
70/711	70/711	70/711	70/711	70/711
Adams County	Adams County	Adams County	Adams County	Adams County
7	7	7	7	7
70/711	70/711	70/711	70/711	70/711
Adams County	Adams County	Adams County	Adams County	Adams County
7	7	7	7	7
70/711	70/711	70/711	70/711	70/711
Adams County	Adams County	Adams County	Adams County	Adams County
7	7	7	7	7
70/711	70/711	70/711	70/711	70/711
Adams County	Adams County	Adams County	Adams County	Adams County
7	7	7	7	7
70/711	70/711	70/711	70/711	70/711
Adams County	Adams County	Adams County	Adams County	Adams County
7	7	7	7	7
70/711	70/711	70/711	70/711	70/711

ROAD TRANSPORTATION UNIT - Idaho Falls, ID to College Station, TX

11. 1-270 east to I-70 (5 miles);
*12. 1-70 east to Kansas (170 miles);

JUN 1964

KANSAS

EMERGENCY
PHONE NUMBERS:

SALINA
SP Division II
(913)827-4437

WICHITA
SP Division V
(316)744-0451

Comm: CH 9
LEA: SP

CB 9, R

	● Salina (i) (j)		(k)	(l)		E ● Wichita		(m)	(n)	(o)	KN	OK
	13	*14				*15	*16					
MILLS IN JURISDICTION	Lincoln County 5	Saline County 33		McPherson County 32		Harvey County 21		Sedgwick County 38		Sumner County 33		
TOTAL MILLS	1107	1112		1145		1177		1198		1236		1269

KEY

- LEA Response Center
- HP/SP Highway Patrol/State Police
- S Sheriff
- CP City Police
- C*P County Police
- ▬ CB Radio Monitored (Base)
- ▭ CB Radio Monitored (Car)
- CH/RO Channel Monitored
- R React Group
- MT Mobile Telephone (Useable)
- E Escort Required

ROAD TRANSPORTATION ROUTE - Idaho Falls, ID to College Station, TX

- 13. I-70 east to I-135 (250 miles);
- *14. I-135 south to I-235 (83 miles);
- *15. I-235 west/south to I-35 (16 miles);
- *16. I-35 south to Oklahoma line (42 miles);

ORLA 4888-A

24 HOUR (405) 424-1616

FOR RENTAL
PHONE 488-8425

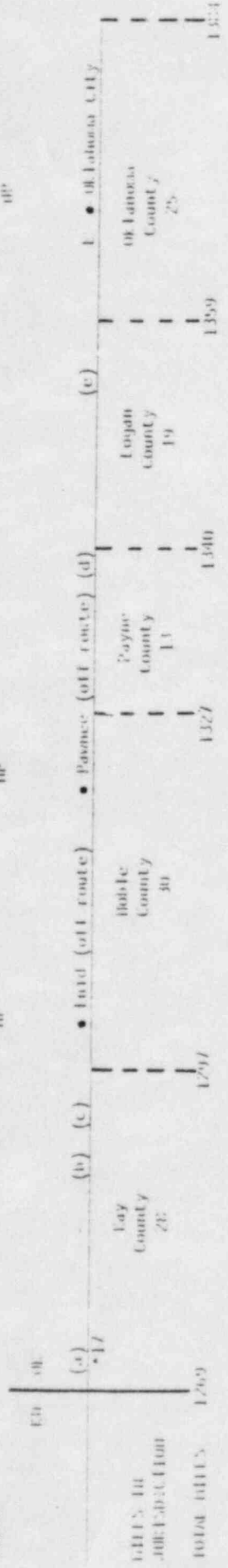
1410
HP (HP) 234-4147
PAMPER
HP (HP) 162-2359

ORLA 4888-A C.H.H.
HP (HP) 162-2359

COMMERCIAL
EQUIPMENT

06 9/19
HP
03 9/19
HP

01 9/19
HP



ROAD TRANSPORTATION ROUTE - Dallas Falls, TX to College Station, TX

*17. 1-35 South to Texas Line (2.36 miles);

KEY

- LAW Response Center
- HP/HP Highway Patrol/State Police
- S Shelby
- CP County Police
- CB Radio monitored (base)
- CB Radio monitored (car)
- Channel monitored
- R React Group
- MT Mobile telephone (DSCable)
- E Escort Required

DELAWARE

24 hour (405) 924-1616

FIELD BY
PHONE NUMBERS:

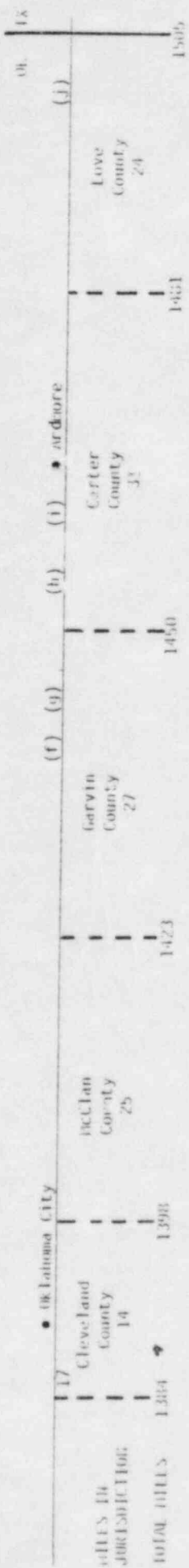
DELAWARE CITY
HP(405)632-4343
521-4055

AR(D)ORL
HP(405)223-1300

CURRENT: HP CB 9/19

LEA: HP

HP CB 9/19



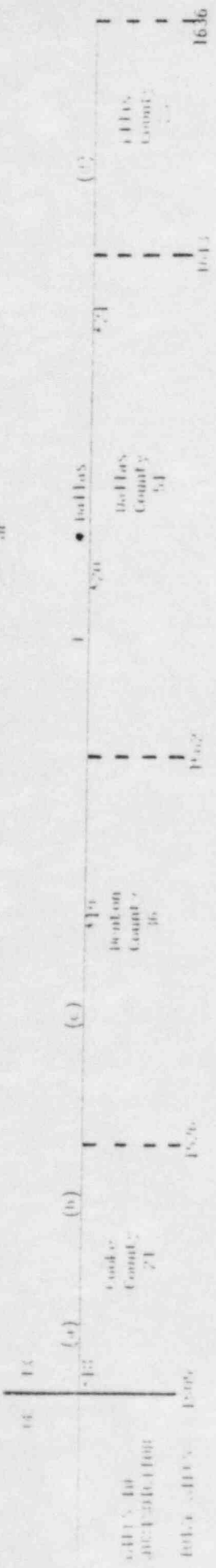
ROAD TRANSPORTATION ROUTE - Idaho Falls, ID to College Station, TX
17, 1-35 South to Texas Line (736 miles);

- LEA
- HP/SP
- CP
- CP
- CB Radio Monitored (Base)
- CB Radio Monitored (Car)
- Channel Monitored
- React Group
- Mobile Telephone (Useable)
- ESCORT Required

1941-42
1942-43
1943-44

1941-42
1942-43
1943-44

1941-42
1942-43
1943-44

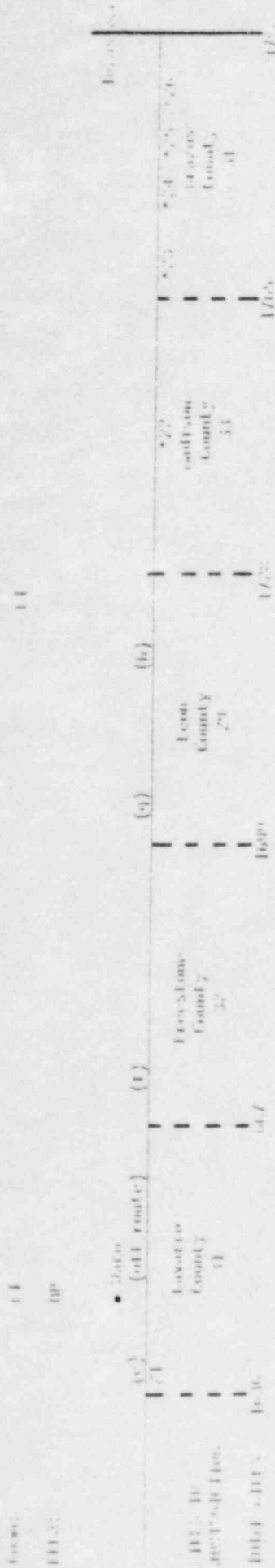


Radio Towers in Idaho Falls, Idaho

- *15. 1-35 south to 1-34 (37 miles);
- *19. 1-34 east/south to 1-63 (27 miles);
- *20. 1-63 east/south to 1-25 (35 miles);
- *21. 1-25 south to 0-190 (13.5 miles);

- Fire Response Center
- ▬ Highway Patrol/State Police
- ▬ City Police
- ▬ County Police
- ▬ Radio Controlled (Large)
- ▬ Radio Controlled (Car)
- ▬ Alarm Controlled
- ▬ Test Group
- ▬ Radio Telephone (Mobile)
- ▬ Radio Telephone

TABLE 7
 ROAD MILEAGE
 (1967-68)



ROAD MILEAGE CHART - Table 7, 10 to College Station, La.

- *21. 1-45 south to US 190 (1.6 miles);
- *22. US 190 west to 13 6 (3.0 miles);
- *23. 13 6 south to 13 bus 6 (9 miles);
- *24. 13 bus 6 north to 13 12 (1 mile);
- *25. 13 12 west/north to 13 34 (4 miles) and
- *26. 13 34 west to 13 bus 6 facility (2 miles).