

# Catawba Nuclear Station Student Emergency Plan

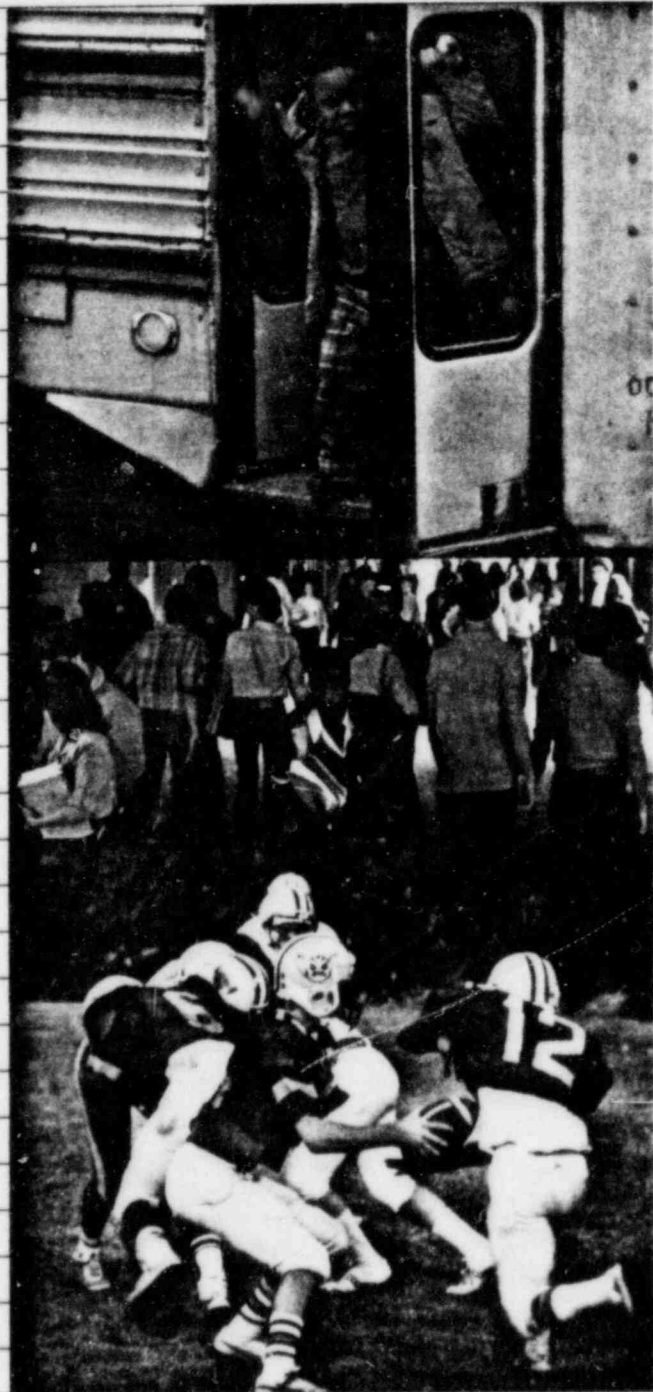
Important Information. Read and save this booklet.

DOCKETED  
USNRC

'84 MAY 24 A9:42

OFFICE OF PUBLIC AFFAIRS  
DOCKETING & RECORDS  
BRANCH

DOCKET NUMBER 50-413/4  
OFFICE OF PUBLIC AFFAIRS  
DOCKETING & RECORDS  
BRANCH  
02



8406220348 840503  
PDR ADOCK 05000413  
6 PDR

Applicants' EP Exhibit 6  
A-EP 5/3/84

---

**Dear Student:**

This brochure is for you and your parents. It is part of the emergency plan for Catawba Nuclear Station. It tells you what to do if you hear the emergency sirens while you are in school or at home alone.

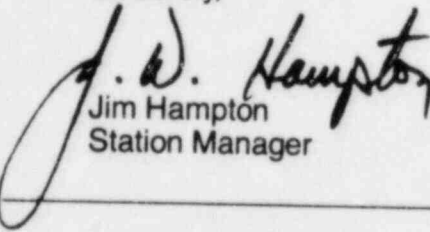
Listen carefully when the information in this brochure is explained to you at school. Ask questions if you don't understand.

There is a card in the brochure with important information. Your teacher will help you fill it out. Take it home to your parents. It will tell them where to pick you up if you are taken from school to a shelter. Your parents should stick the card in a safe place at home. Tell them to remember the information on the card.

Take this brochure home to your parents. Read and study it together. You and your parents plan what you should do if the sirens go off while you are at home alone.

We expect the Catawba Nuclear Station to operate safely. But we want you to be prepared. If you know the information in this brochure, you will be prepared for an emergency.

Sincerely,



Jim Hampton  
Station Manager

---

**Q&A**

This booklet is for students who go to schools near the Catawba Nuclear Station. Catawba Nuclear Station is a power plant. It generates electricity using nuclear fuel. Duke Power operates the station.

We expect the nuclear station to run safely. You probably will never have to use the information in this booklet. But we want you to be prepared. This booklet tells you what you should do if there is ever an accident at the station that could affect your safety.

Read the following questions and answers to find out what to do.

- 
- Q:** If something happens at the nuclear station, how will I know?
- A:** If anything happens at Catawba that you should know about, sirens will go off. The sirens will make a loud steady sound for three minutes.

Docket No. 50-913 01  
50-41401

In the matter of Calandra

Official Exh. No. App's EP-6

Staff	IDENTIFIED	<input checked="" type="checkbox"/>
Applicant	RECEIVED	<input checked="" type="checkbox"/>
Intervenor	REJECTED	
Contractor	DATE	<u>5/3/84</u>
Other	Witness	<u>Cont. 147 Panel</u>
Reporter		<u>ky</u>

**Q:** What should I do if I'm at school and the sirens go off?  
**A:** If you're at school and you hear the sirens, be quiet and listen to your teacher. Stay with your class. Your principal will listen to the radio to find out what to do. Your teacher will look after you. Stay calm. Your teachers and principal have been taught what to do.

**Q:** If my school is evacuated, what should my parents do?  
**A:** Your parents should pick you up at the shelter for your school. They will have that information on a card you will fill out and take home. Local radio and TV stations will tell them what is going on.

**Q:** If my school is in a zone that is told to stay indoors, what should my parents do?  
**A:** Your parents should *not* try to pick you up at school. This would only cause confusion. They should keep listening to the radio or TV for information.

**Q:** If my school is evacuated, how will I get to the shelter?  
**A:** Plans have been made for buses to take you. Students will be taken to the shelter for their school. You will stay there with a teacher until your parents can pick you up. Your parents should pick you up at the shelter.

**Q:** How will my parents know where to pick me up?  
**A:** The student information card in this booklet will tell your parents the zone in which your school is located. It will also tell them the shelter used for your school. Your teacher will help you fill out the card. Take it home to your parents. Ask them to put it in a place where they can find it.

**Q:** What if the shelter for my home is different from the shelter for my school?  
**A:** If you are at school and both you and your parents have been told to evacuate, your parents can go to your school's shelter and stay with you.

---

**Q:** What should I do if I'm at home alone and the sirens go off?

**A:** If you are outdoors, go inside immediately and turn on the radio or television. Listen for your home's zone to be called. If you don't hear your zone, you don't need to do anything but keep listening to your local radio or television station. If you are in a zone that is told to stay indoors, close all windows and doors. Turn off fans, air conditioners and furnaces that have fans. Keep listening to the radio or television station until it says the emergency is over.

---

**Q:** What if I don't hear any information on the radio or TV after the siren goes off?

**A:** You may have heard a test of the sirens. Or a siren may have gone off by mistake. Keep listening. If you still don't hear anything, call the emergency number for your county listed below.

York County Emergency Management	(803) 328-6171 ext. 225, 226
-------------------------------------	---------------------------------

Charlotte-Mecklenburg County Emergency Management	(704) 374-2412
--	----------------

Gaston County Emergency Management	(704) 866-3303
---------------------------------------	----------------

---

**Q:** If I'm home alone and I'm told to leave, what do I do if I can't drive?

**A:** Wait for your parents to come home and pick you up. Or ride to the shelter with a friend or neighbor. If you sometimes stay home alone, you and your parents should work out a plan to get you to the shelter. If you plan to ride with a friend or neighbor, have your parents tell them of your plan. Then if an evacuation is ordered they will know to take you with them. If you stay alone, and don't have neighbors or friends nearby, your parents should call your county civil defense office today and tell them your situation. Use the phone numbers listed above.

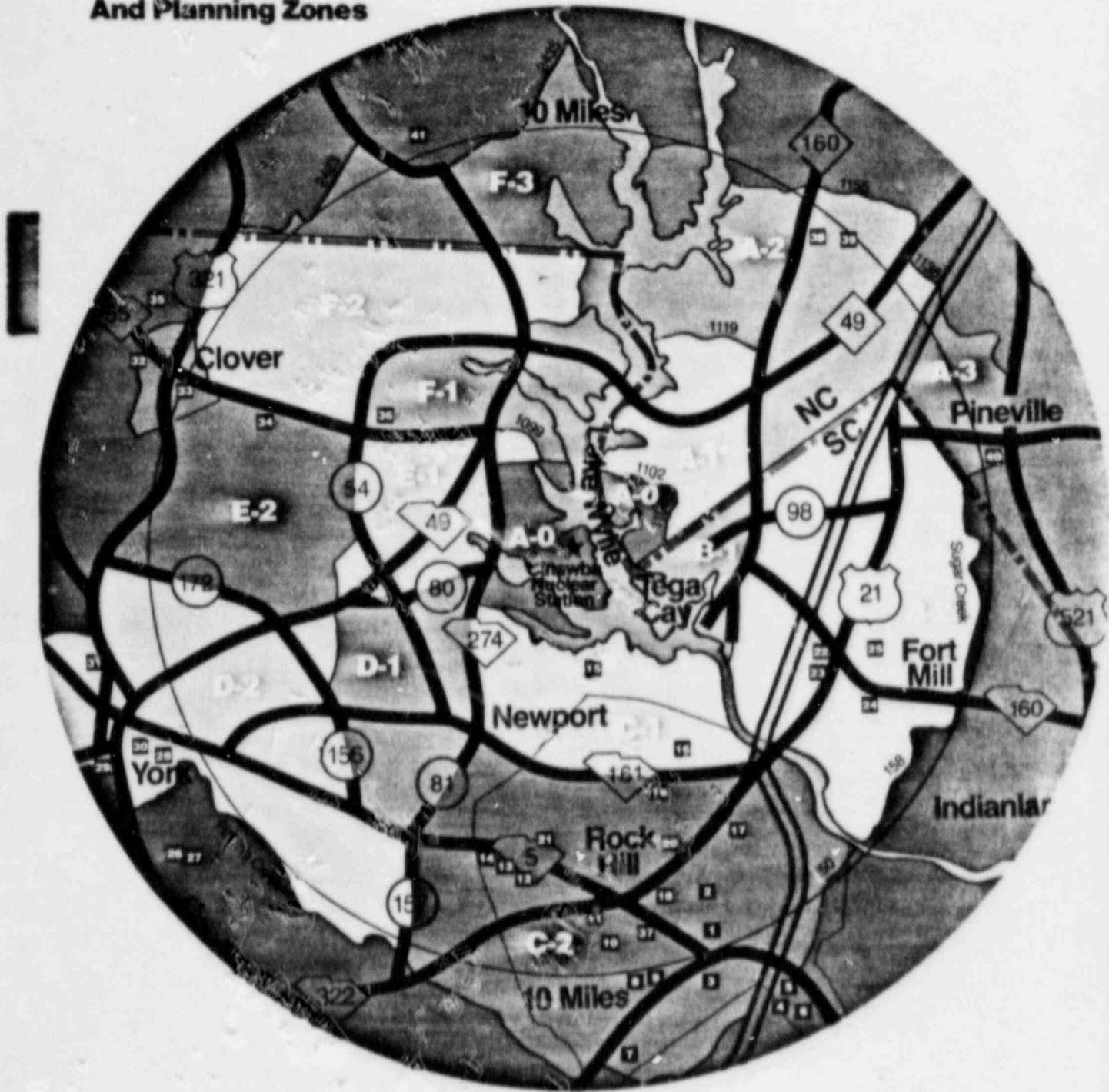
---

**Q:** What happens at the shelter?

**A:** There will be many people at the shelter with you. There will also be people from the Red Cross, Salvation Army and other organizations to help you until your parents arrive.



# School Locations And Planning Zones



School	Zone	Shelter
Belleview Elementary School 1	C-2	Lewisville Elementary School
Bethel Elementary School 36	F-1	Bethany ARP Church
Castle Heights Junior High School 3	C-2	Lewisville High School
Clover High School 34	E-2	Bethany Elementary School
Clover Junior High School 33	E-2	Bethany ARP Church
Clover Middle School 35	E-2	Bethany ARP Church
Ebenezer Elementary School 18	C-2	Lewisville Elementary School
Ebinport Elementary School 19	C-2	Lewisville Elementary School
Edgewood Special Education Center 8	C-2	Lewisville Middle School
Episcopal Church Home for Children 31	D-2	Sharon Elementary School
Finley Road Elementary School 11	C-2	Lewisville Middle School
Floyd D. Johnson Vocational School 27	D-2	Sharon Elementary School
Fort Mill Elementary School 22	B-2	Indianland Elementary School
Fort Mill High School 24	B-2	Indianland High School
Fort Mill Junior High School 25	B-2	Indianland Vocational School
Fort Mill Primary School 23	B-2	Indianland Elementary School
Harold C. Johnson Middle School 28	D-2	Sharon Elementary School
Independence Elementary School 5	C-2	Lewisville Middle School
Jefferson Elementary School 29	D-2	Sharon Elementary School
Kinard Elementary School 32	E-2	Bethany ARP Church
Leslie Elementary School 6	C-2	Lewisville Middle School
McCelvey Elementary School 30	D-2	Sharon Elementary School
Mount Gailant Elementary School 15	C-1	Lewisville Middle School
Northside Elementary School 2	C-2	Lewisville Elementary School
Northwestern High School 13	C-2	Lewisville High School
Oakdale Elementary School 7	C-2	Lewisville Middle School
Olympic High School 39	A-2	University of North Carolina at Charlotte
Pineville Elementary School 40	A-3	University of North Carolina at Charlotte
Rawlinson Road Junior High School 14	C-2	Lewisville High School
Richmond Drive Elementary School 20	C-2	Lewisville Middle School
Rock Hill Alternative School 37	C-2	Lewisville Middle School
Rock Hill Career Development Center 12	C-2	Lewisville Middle School
Rock Hill High School 4	C-2	Lewisville High School
Rosewood Elementary School 10	C-1	Lewisville Elementary School
Steele Creek Elementary School 38	A-2	University of North Carolina at Charlotte
Sullivan Junior High School 17	C-2	Lewisville High School
Sunset Park Elementary School 10	C-2	Lewisville Elementary School
Sylvia Circle Elementary School 9	C-2	Lewisville Elementary School
W. A. Bess School 11	F-3	Ashley Junior High School
York Comprehensive High School 26	D-2	Sharon Elementary School
York Road Elementary School 21	C-2	Lewisville Elementary School

**Ashley Junior High School** Gastonia, NC  
**Bethany ARP Church** Clover, SC  
**Bethany Elementary School** Clover, SC  
**Indianland Elementary School** Fort Mill, SC  
**Indianland High School** Fort Mill, SC  
**Indianland Vocational School** Fort Mill, SC

**Lewisville Elementary School** Edgemoor, SC  
**Lewisville High School** Richburg, SC  
**Lewisville Middle School** Richburg, SC  
**Sharon Elementary School** Sharon, SC  
**University of North Carolina at Charlotte** Charlotte, NC