

Official Copy

JAN 29 1992


Docket No. 50-302
License No. DPR-72

Florida Power Corporation
Mr. Percy M. Beard, Jr.
Senior Vice President, Nuclear
Operations
ATTN: Manager, Nuclear Operations
Licensing
P. O. Box 219-NA-2I
Crystal River, FL 32629

Gentlemen:

Enclosed is an organization chart of Region II which identifies managers and staff associated with the inspection and regulation of the Crystal River Nuclear Station.

Sincerely,



Stewart D. Ebnetter
Regional Administrator

Enclosure:
Organization Chart

cc w/encl:
Gary L. Boldt
Vice President, Nuclear Production
Florida Power Corporation
P. O. Box 219-SA-2C
Crystal River, FL 32629

P. F. McKee, Director
Nuclear Plant Operations
Florida Power Corporation
P. O. Box 219-NA-2C
Crystal River, FL 32629

R. C. Widell, Director
Nuclear Operations Site Support
Florida Power Corporation
P. O. Box 219-NA-2I
Crystal River, FL 32629

cc w/encl cont'd - see page 2

9202140247 920129
PDR ADOCK 05000302
P PDR

IEO1

JAN 29 1992

cc w/encl cont'd:
A. H. Stephens
General Counsel
Florida Power Corporation
MAC - A5D
P. O. Box 14042
St. Petersburg, FL 33733

Attorney General
Department of Legal Affairs
The Capitol
Tallahassee, FL 32304

bcc w/encl:
NRC Resident Inspector
U.S. Nuclear Regulatory Commission
6745 N. Tallahassee Road
Crystal River, FL 32629

J. Johnson, RII
K. Landis, RII
H. Silver, NRR
Document Control Desk

Jacob Daniel Nash
Office of Radiation Control
Department of Health and
Rehabilitative Services
1317 Winewood Boulevard
Tallahassee, FL 32399-0700

Administrator
Department of Environmental
Regulation
Power Plant Siting Section
State of Florida
2600 Blair Stone Road
Tallahassee, FL 32301

Robert G. Nave, Director
Emergency Management
Department of Community Affairs
2740 Centerview Drive
Tallahassee, FL 32399-2100

Chairman
Board of County Commissioners
Citrus County
110 N. Apopka Avenue
Inverness, FL 36250

Robert B. Borsum
B&W Nuclear Technologies
1700 Rockville Pike, Suite 525
Rockville, MD 20852-1631

RII:DRP

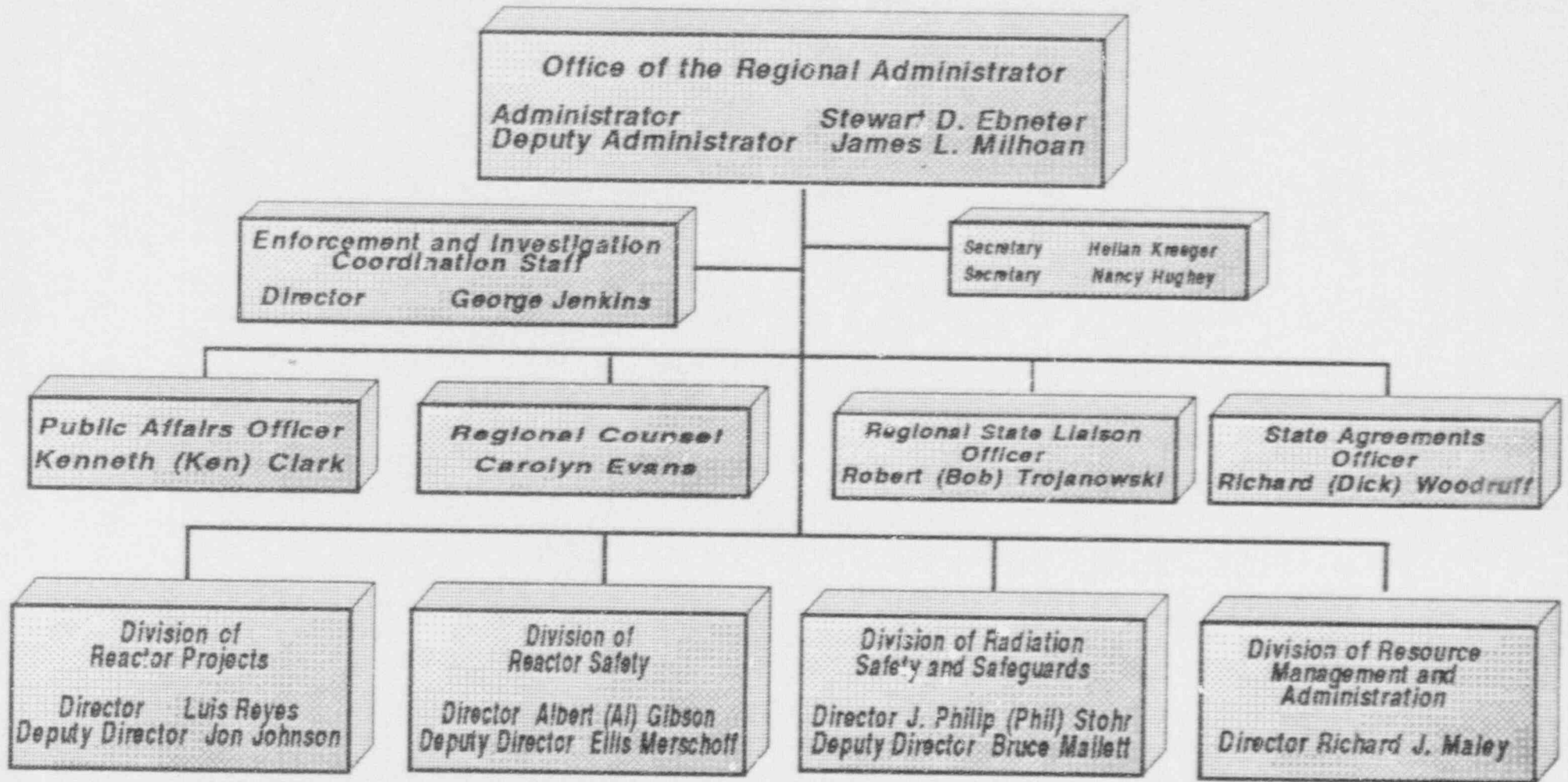
KLandis
01/14/92

RII:DRP

MS Inkule
01/16/92

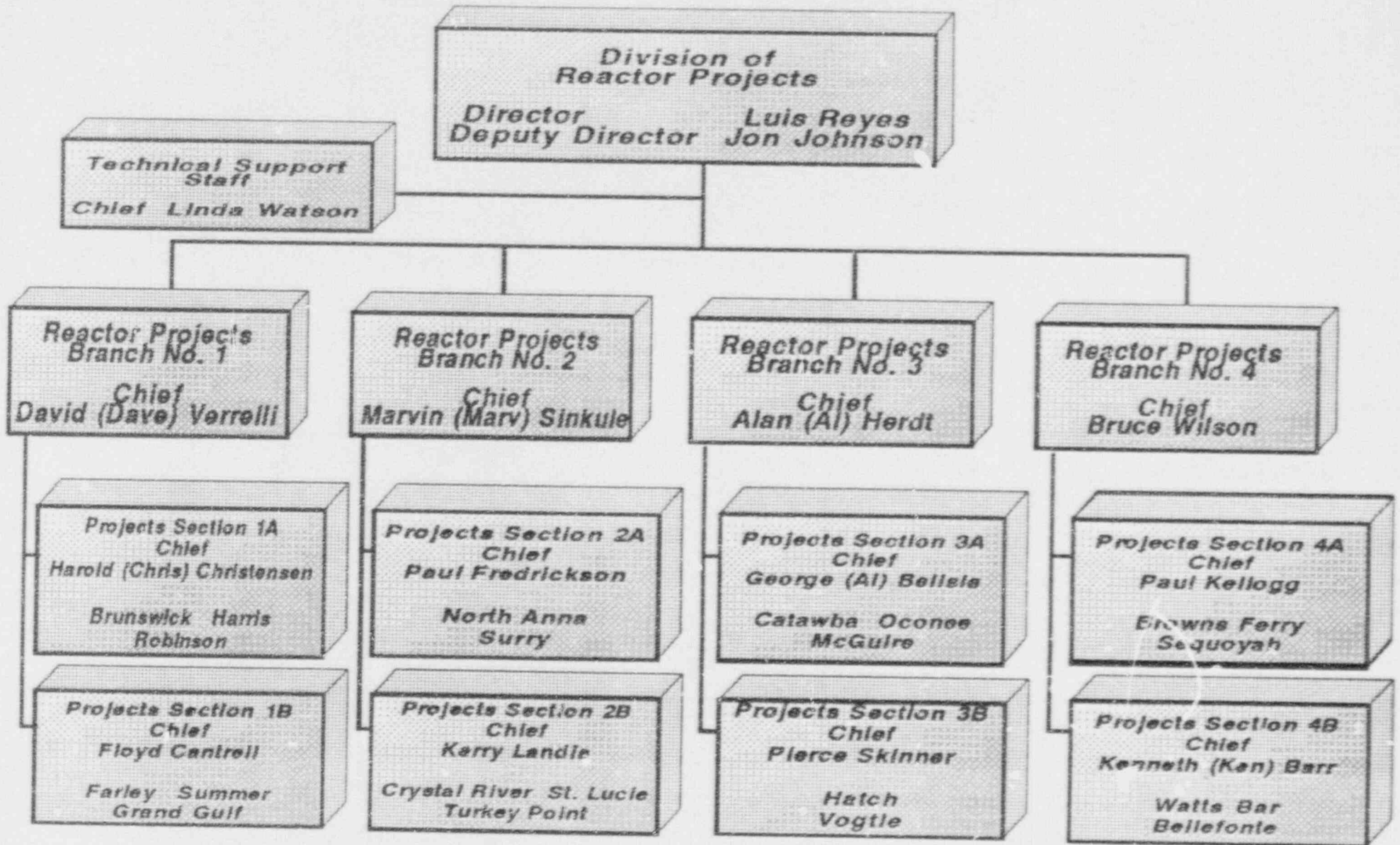
**U.S. NUCLEAR REGULATORY COMMISSION
REGION II ORGANIZATION CHART**

JANUARY 1, 1992
PAGE 1 OF 4



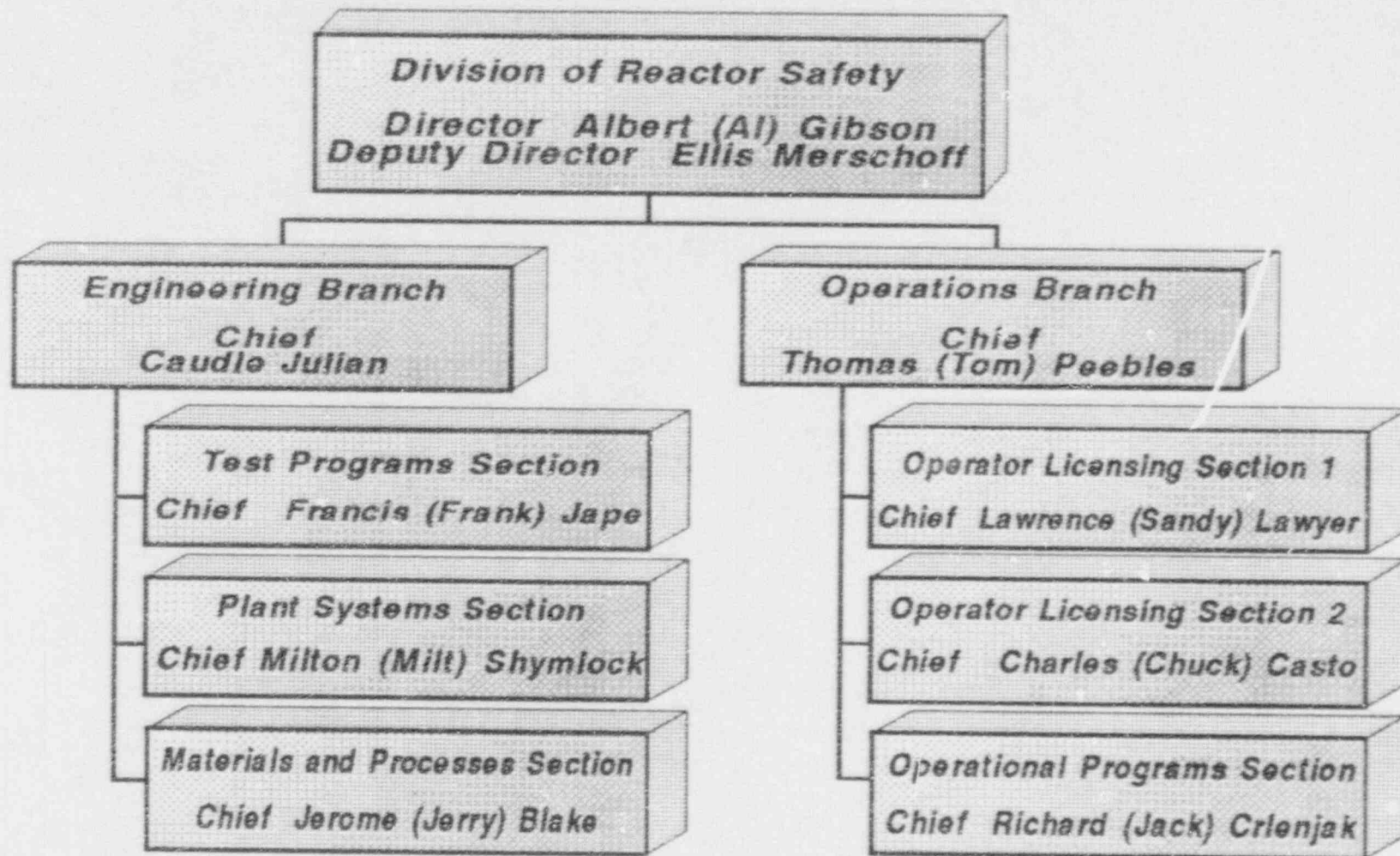
**U.S. NUCLEAR REGULATORY COMMISSION
REGION II ORGANIZATION CHART**

JANUARY 1, 1992
PAGE 2 OF 4



**U.S. NUCLEAR REGULATORY COMMISSION
REGION II ORGANIZATION CHART**

JANUARY 1, 1992
PAGE 3 OF 4



**U.S. NUCLEAR REGULATORY COMMISSION
REGION II ORGANIZATION CHART**

