



GPU Nuclear Corporation
Post Office Box 388
Route 9 South
Forked River, New Jersey 08731-0388
609 971-4000
Writer's Direct Dial Number:

June 13, 1984

Dr. Thomas E. Murley, Administrator
Region I
U. S. Nuclear Regulatory Commission
631 Park Avenue
King of Prussia, PA 19406


Dear Dr. Murley:

Subject: Oyster Creek Nuclear Generating Station
Docket No. 50-219
Thirty-Fifth Quarterly Report

In accordance with Section 3.1 of the Oyster Creek Environmental Technical Specifications, GPU Nuclear Corporation submits two (2) copies of the subject report on the "Study of Woodborer Populations in Relation to the Oyster Creek Nuclear Generating Station" by R. E. Hillman and C. I. Belmore. This report covers the period February 1, 1984 to April 30, 1984.

If you have any questions concerning this report, please do not hesitate to contact Mr. Douglas Moore of our Licensing and Regulatory Affairs Department at (609) 971-4630.

Very truly yours,


Peter B. Fiedler
Vice President and Director
Oyster Creek

PBF:dsm
Enclosure

cc: Director (17 copies)
Office of Nuclear Reactor Regulations
U. S. Nuclear Regulatory Commission
Washington, D.C. 20555
C/o Distribution Services Branch, DDC, ADM

N. J. Bureau of Radiation Protection
Attention: Chief
Division of Environmental Quality
United Sierra Building
380 Scotch Road
West Trenton, NJ 08625

8406210365 840613
PDR ADOCK 05000219
R PDR

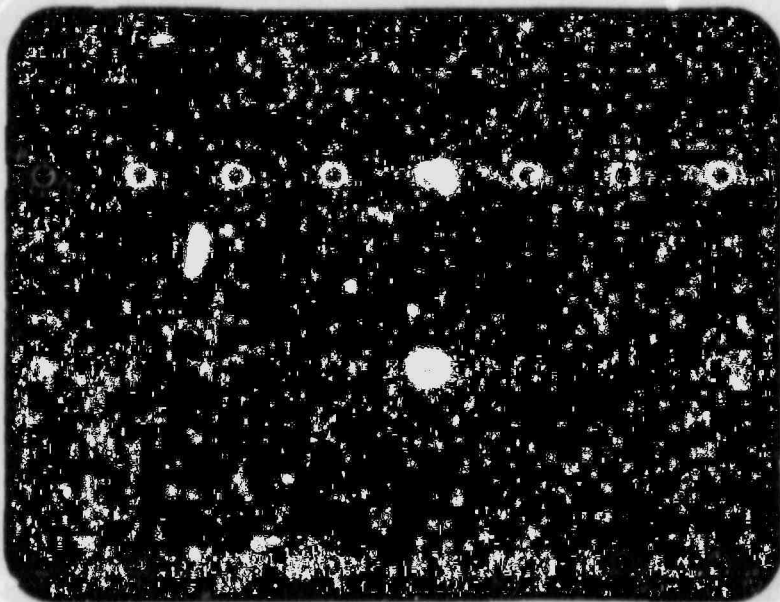
GPU Nuclear Corporation is a subsidiary of the General Public Utilities Corporation

41
1E 25



Battelle

Report



New England
Marine Research Laboratory