

**SARGENT & LUNDY**  
ENGINEERS  
CHICAGO

REPORT OF WALKDOWN TO VERIFY SEISMIC ADEQUACY OF MAIN STEAM  
DRAIN LINE AND CONDENSER FOR USE AS THE ALTERNATE  
MSIV LEAKAGE TREATMENT SYSTEM

REPORT PREPARED FOR COMMONWEALTH EDISON COMPANY  
LASALLE COUNTY NUCLEAR STATION - UNIT 2  
PROJECT NO.: 09606-069  
WIN NO.: 2214

SARGENT & LUNDY  
S&L FILE NO.: EMD-067927, Rev. 2  
Aug. 9, 1995

PAGE 1

REPORT OF WALKDOWN TO VERIFY ADEQUACY OF MAIN STEAM  
DRAIN LINE AND CONDENSER FOR USE AS THE ALTERNATE MSIV  
LEAKAGE TREATMENT SYSTEM

COMMONWEALTH EDISON COMPANY  
LASALLE COUNTY NUCLEAR STATION - UNIT 2

PROJECT NO.: 09606-069

WIN NO.: 2214

Prepared By: A. I. Gershman 8/9/95  
A. I. Gershman  
\*Reviewed By: R. L. Humphreys 8/10/95  
R. L. Humphreys  
Approved By: J. G. Petrich 8/10/95  
J. G. Petrich

\*The review of this report was accomplished by performing a review of the typographical changes made to Rev. 2 only.

Note that the signatures for Revision 0 and Revision 1 are in file.

TABLE OF CONTENTS

<u>Section</u>	<u>Description</u>	<u>Page</u>
	Title Page .....	1
	Signature Page .....	2
	Table of Contents .....	3
1.	Introduction .....	4
2.	Purpose and Scope of Review .....	4
3.	Design of LaSalle Piping and Supports .....	5
4.	Walkdown Criteria & Description .....	6
5.	Turbine Building .....	7
6.	Main Turbine Condenser .....	8
7.	Main Steam and Drain Line/Bypass Piping .....	9
8.	Description of Outliers and Resolution .....	11
9.	Conclusion .....	13
10.	References .....	14
	Table 1: List of Isolation Valves .....	15
	Table 1A: List of Drain Path Valves .....	16
	Table 2: Piping System Design Parameters .....	17
	Table 3: Outlier Identification and Resolution .....	18
	Figure 1: Isometric View of Leakage Control Path .....	20
	Figure 2: Key Plan for LaSalle County Station Units 1 and 2 .....	21
	Figure 3: Condenser Outline Drawing .....	22
	Figure 4: Valve Operator Cantilever Length Limits .....	23
	Figure 5: Seismic Verification Boundary .....	24

## 1. INTRODUCTION

As a resolution to the Main Steam Isolation Valve (MSIV) leakage and Leakage Control System (LCS) performance issues, the BWR Owner's Group (BWROG) proposed to use the main steam piping and condenser as a method for MSIV leakage treatment. This method provides effective and reliable fission product attenuation for reducing the radiological consequences of MSIV leakage.

The BWROG has also evaluated the capability of main steam piping and condensers to process MSIV leakage following a design basis accident coincident with a seismic event. Based on this comprehensive evaluation, the BWROG has concluded there is reasonable assurance that the main steam piping and condenser will remain functional following a design basis accident coincident with a seismic event, as great as the design basis earthquake, to mitigate the radiological consequences of MSIV leakage. This conclusion is in part based on performing a plant-specific verification of seismic adequacy of the main steam piping and condenser to provide reasonable assurance of the structural integrity of these components. This document summarizes the results of the walkdown to verify seismic adequacy of these components which will replace the existing LCS of LaSalle County Nuclear Station-Unit 2 (LaSalle Unit 2).

## 2. PURPOSE AND SCOPE OF REVIEW

The purpose of this report is to document the field walkdown performed to verify seismic adequacy of the main steam piping and condenser for use as the alternate MSIV leakage treatment system for LaSalle Unit 2.

A seismic verification walkdown was performed based on the guidelines in NEDC-31858P (Reference 10.3) to provide reasonable assurance that the section of main steam piping between the outermost MSIV and High Pressure (HP) turbine stop valves including the condenser and associated unisolated branch lines, will maintain structural integrity with respect to the seismic event.

The condenser forms the ultimate boundary of the leakage pathway. Boundaries were established upstream of the condenser by utilizing existing valves to limit the extent of the seismic verification walkdown. The criteria used to define the scope of review follows.

- 1) Normally closed valves that will not open and can be assured to remain closed
- 2) Normally open valves that can be assured to close and remain closed
- 3) Valves that may require operator action to assure closure and are powered from a reliable power source (i.e., powered by non-essential power supplied by essential busses)
- 4) Drain lines connected to the condenser that will be utilized to carry the MSIV leakage to the condenser

There does not exist any of the isolation valves that meet the criteria outlined above for Main Steam sample line up to the sample panel. This line will be walked only to the sample panel and the lack of automatic or powered isolation will be identified as an outlier. MS LCS line was not included in the walkdown since this line will be cut and capped at the steam header as part of the system modification needed to initiate the alternative leakage control path.

A list of isolation valves used to define seismic verification boundary is provided in Table 1, along with type of power, category number as previously defined and pertinent information on the isolation capability following a Safe Shutdown Earthquake (SSE). Table 1A lists valves under category 4 defined above.

Drain lines, 2MS20AA/AB/AC/AD-2" and 2MS20BA/BB/BC/BD-1 1/2" are also within the boundary of the leakage pathway. However, these lines were excluded from the walkdown since these lines were previously analyzed as ASME Section III, class 1. These lines are bounded by valves 2B21-F067A/B/C/D and 2B21-F025A/B/C/D.

An Isometric sketch of LaSalle Unit 2 main steam system beyond the outboard MSIVs up to the condenser and some of the isolation valves is shown in Figure 1. It is to be noted that Figure 1 is only an overall representation of the alternate leakage control path and does not necessarily include all the MS branch lines. For a complete scope of seismic verification walkdown, a marked up P&ID in Figure 5 should be referred to.

The structural integrity of the turbine building was also reviewed to provide reasonable assurance that the capability of main steam and condenser fluid pathways are not degraded due to building structural damage.

### 3. DESIGN OF LASALLE PIPING AND SUPPORTS

Main steam and drain/by-pass piping including the warm-up and process sampling lines at the LaSalle plant were seismically analyzed in accordance with ASME Boiler and Pressure Vessel (B&PV) Code Section III, class 2 and 3 rules, and their supports were also designed for the seismic loads using the ANSI B31.1 code, although they are designated as non-safety-related. The only exception are drain lines from mainsteam headers to the first anchors (subsystem 2MS-71) which is all class D. As built configuration of these drain lines were checked for the items listed in Section 7.0 for class D only, and no outliers were found.

One analysis model included the main steam piping to the turbine and the by-pass line. The main steam drain and warm-up lines were decoupled from the above mentioned main steam line and were analyzed up to the condenser and structural anchors, respectively. These piping subsystems consist of the majority of the piping and supports within the scope of review, and the design methods for these analyzed lines are consistent with seismic Category I qualification methods for LaSalle's safety-related piping and supports.

It is also to be noted that other non-safety-related piping at LaSalle had previously been analyzed and found to be rugged enough to survive the design basis earthquake

through a Seismic Category II over Seismic Category I assessment previously performed (Reference 10.5). The same can be concluded for the non-safety-related piping in a Seismic Category II buildings, since the piping and support designs are similar.

Specific design parameters used for the design of the piping and supports within the scope of review are described in Table 2.

#### 4. WALKDOWN

A field walkdown was performed based on the guidelines in NEDC-31858P (Reference 10.3) to provide supplemental verification that a reasonable assurance of the integrity of the subject systems and components exists, and was focused only on the realistic hazards to verify design attributes important to seismic performance and to identify non-typical commodities with uncertain seismic capacity. The walkdown also took into account the good seismic performance of conventional power plant condensers (that are similar in construction to nuclear power plant condensers) and the rugged design of the main steam piping and its branch lines.

Piping single line drawings falling under the scope of review were prepared for the walkdown by grouping and marking affected piping. The walkdown team consisted of one degreed and licensed structural engineer who has experience in structural seismic analysis and has completed EPRI sponsored courses: "A-46 Walkdown, Screening and Seismic Evaluation" and "Add-on Seismic IPE Training". A second team member is a degreed piping design engineer who is a licensed professional engineer experienced in piping seismic analysis.

The engineers in the walkdown team collectively possess the following knowledge and experience:

- Knowledge of the performance of equipment, systems, and structures during strong motion earthquakes in industrial process and power plants.
- Nuclear plant walkdown experience which includes: potential seismic interaction; II/I issues; A-46 walkdown; and IPE screening walk-through.
- Knowledge of nuclear design Codes and standards including the visual inspection requirements of ASME OM-3.
- Experience in seismic design, seismic analysis, and test qualification practices for nuclear power plants.

The main steam line was walked through from the outermost Main Steam Isolation Valves to the Main Steam Stop Valves, the Main Steam By-Pass Valves, and 2B21-F418A(B). The drain lines tapping off the MS piping within this boundary were walked through to the condenser and to the valves 2B21-F071(73). The warm-up lines were walked to the valve 2B21-F020.

Piping system anomalies (termed "outliers") that may lead to the loss of the system pressure boundary during a seismic event were identified, and they are discussed in Section 8.

## 5. TURBINE BUILDING

The turbine building seismic performance is of interest to the issue of MSIV leakage only to the extent that it will not degrade the capabilities of the selected main steam and condenser pathways. A BWROG survey of this type of industrial structure has, in general, confirmed that excellent seismic capability exists. There are no known cases of structural collapse of either turbine buildings at power stations or structures of similar construction. At the LaSalle Station, the turbine building shares the north-south wall with the auxiliary building and the diesel generator room as shown in Figure 2. The turbine building was included in the seismic models (Reference 10.1). The shear walls and slabs were designed for the seismic loads obtained from the seismic analysis. The structural project design criteria (Reference 10.2) requires that Class II structures be designed to ensure that a failure of any part of the Class II structures will not affect the structural integrity of Class I structures or systems. Furthermore, the criteria requires that Class II structures be designed to resist the forces determined from the combined Class I and Class II model.

The exterior walls of the turbine building are reinforced concrete, 3 feet thick below grade and 1 foot thick above grade similar to the Class I structures. The floor slabs with concrete framing are 18 inches thick and the floors supported on steel framing are 6 inches thick. These thicknesses are also similar to the Class I structures. The turbine building above grade were also designed for wind loads and seismic loads in accordance with the Uniform Building Code of 1970. For tornado loading condition, the siding of the turbine building is designed to blow off at a predetermined wind pressure (about 71 psf) so that the structural frame is protected from excessive tornado pressures. Structural integrity of the bare frame is then checked for vented tornado pressures. The tornado pressures considered were 300 psf for windward and 166 psf for leeward. The final design of the turbine building was controlled by the forces resulting from the tornado pressures. The initial design was modified to accommodate those forces.

Horizontal and vertical truss systems were provided to transmit these loads down to the reinforced concrete walls. The design of the shear walls was checked to assure the capability of transmitting the forces to the basemat and the foundation material.

Based on the above description of the structure and structural design criteria, it is concluded that turbine building will not collapse under SSE at LaSalle Station.

## 6. MAIN TURBINE CONDENSER

The LaSalle Unit 2 condenser is a single shell with three condenser extension necks, single pass construction with total effective tube surface area of 950,000 square feet. The shell is 7/8" thick A285 Grade C flange quality steel. Figure 3 contains the outline drawing for the condenser. The design basis for the LaSalle Unit 2 condenser follows:

### 6.1 Design Code

The condenser was designed based on the Heat Exchanges Institute Standards (HEI).

### 6.2 Design Pressure

- a. Shell was designed for 15 psig pressure and tested for 20 psig.
- b. Water boxes, tube sheets, etc. were designed for 25 psig and tested for 30 psig.

### 6.3 Manufacturer: Westinghouse Electric Corporation

### 6.4 Size, Weight, Dimensions

Size: Effective surface area of 950,000 square feet.

Weight: Empty = 2,880,000 lbs.

Operating = 6,026,000 lbs.

Test = 14,886,000 lbs.

Dimensions (shell):

Length = about 90'

Width = about 35'

Height = about 71' including condenser extension necks

Shell Material and Thickness: ASTM A-285C and 7/8" thick.

### 6.5 Anchorage Description

The condenser is seated on 8 reinforced concrete piers which are supported by the Turbine Building foundation. Each seat consists of a base plate with shear bars. The shear bars are grouted to the top of the pier. The condenser is connected to the piers by 6 1-5/8"φ A36 anchor bolts at each pier for a total of



48 anchors. The holes in the base plates and the bottom of the condenser are arranged in a fashion to allow thermal growth.

## 6.6 Condenser Evaluation

### a. Method of Evaluation

Appendix D of Reference 10.3 is used to compare the condenser to the "Experience Data Base". Because the condenser size and weight are larger than the condensers in the "Experience Data Base", additional anchorage evaluations were performed to determine their adequacy for the design basis earthquake and beyond.

The method of evaluation is summarized as follows.

1. The condenser capacity and demand parameters were compared to the "Experience Data Base" contained in Reference 10.3.
2. A simple anchorage review was performed to estimate the anchorage capacity for seismic loads.
3. Seismic capacity is compared to seismic demand to estimate the anchorage High Confidence of Low Probability of Failure (HCLPF) capacity using seismic margin methods provided in Reference 10.4.

### b. Evaluation Results

1. The condenser seismic demand falls well within the bounds of the "Experience Data Base".
2. The condenser anchorage provides significantly greater "Resistance to Seismic Demand" than those in the "Experience Data Base".
3. The condenser anchorage has a HCLPF greater than 0.30g which is well above the design basis SSE of 0.20g.

## 7. MAIN STEAM AND DRAIN LINE/BYPASS PIPING

All of the piping systems within the scope of the review are classified as non-safety-related. However, majority of the piping were seismically analyzed (class D+) in accordance with ASME Section III class 2 and 3 rules using response spectrum analysis techniques. Seismically analyzed piping include main steam line (downstream piping from the most outboard main steam isolation valves to the main steam stop valves, the main steam bypass valves and 2B21-F418A(B)), drain lines to the condenser except subsystem 2MS-71 described in Section 3, and the warm-up lines to valve 2B21-F020 as shown in Figure 1. Small bore instrument lines such as process sampling lines have also been designed seismically using a simplified procedure to support the piping/tubing. The design methods for all these lines are consistent with Seismic Category I qualification methods and the design margins are expected to be adequate to assure good seismic performance.

Pressure sensing instrument lines from the main steam line to the pressure sensors in the turbine building are classified as non-seismic (class D) and are designed to the requirements of the B31.1 code. These lines appeared to be dead load supported in general conformance to the recommendations of the B31.1 code using rigid rods and U-bolts. Review of the piping and support design codes and piping design parameters demonstrated that piping and supports fall within the bounds of design characteristics found in "Earthquake Experience Data base".

To further verify the reasonable seismic adequacy of the piping and supports within the scope of the review, a walkdown has been performed to visually identify conditions of the piping and supporting configurations which may result in seismically induced pressure boundary failure and inventory release from the main steam and drain piping. The approach utilized in the walkdown for verifying seismic adequacy of the subject piping is as outlined in Reference 10.3 and is consistent with Reference 10.4. The walkdown was focused on identifying potential failure of non-seismically designed piping, poorly installed and/or deteriorated piping supports, falling of non-seismically designed plant features that may impact the above mentioned piping systems (II/I), seismic interaction, and differential seismic building movement on piping systems.

During the walkdown, the following items were visually inspected and no significant outliers were identified except those listed in Table 3.

#### 7.1 Support and Anchorage:

The piping support and anchorage installation were visually inspected for (1) missing or disconnected parts such as bolts, nuts, pins, welds and anchors; (2) broken, grossly deformed, cracked or disconnected support components; (3) excessive corrosion; (4) spalling of concrete; (5) stanchion supports not being properly seated; and (6) potential for the pipe to fall off due to insufficient distance to the edge of the support. In addition to the above, non-seismically analyzed piping (Class D) were also checked for (1) heavy in-line components or long risers supported only by a spring hanger; (2) piping sections with a series of spring hangers without nearby rigid supports; (3) a long run of pipe (i.e., 4 to 5 vertical support spans) without any lateral support; and (4) Valve operator exceeding a cantilever length limit provided in Figure 4.

#### 7.2 Seismic Interaction:

Motor/air operated valves (MOV/AOV) were checked for potential seismic impact by other plant features such as structure, cable trays, conduits, HVAC ducts, hangers, etc. due to inadequate seismic clearance. Small branch piping was checked for potential seismic impact or movement restriction due to a large and flexible header.

7.3 II Over I Review:

Piping and supports were checked for any potential damage due to impact caused by failure and falling of overhead or adjacent equipment, systems, or structures.

7.4 Differential Seismic Motions:

The following conditions, which may impose differential seismic motions on the piping, were also checked to ensure that adequate piping flexibility exists to preclude failure.

- (1) Terminal end equipment with inadequate anchorage or supported on a vibration isolator.
- (2) Small bore piping or tubing connected to an equipment, valve or instrumentation, with insufficient flexibility to accommodate seismic motion between the equipment and adjacent support or structure (Class D only).
- (3) Pipe supports or anchors attached to adjacent and uncoupled buildings with inadequate piping flexibility (Class D only).
- (4) Rigidly supported branch piping close to a flexible header (Class D only).

In summary, all of the piping within the scope of the review were seismically analyzed/designed in accordance with ASME section III, class 2 and 3 rules, except small bore pressure sensing instrument lines which are similar to or better than the piping found in "Earthquake Experience Data Base".

Minor issues concerning potential seismic interaction between motor operated valves and adjacent piping/valve, differential seismic anchor movements and support anchorage of process sampling line were identified during the walkdown, that could be potential sources of damage. These were evaluated and were found to be acceptable as shown in Table 3.

For the pressure sensing instrument lines, each 1" NPS or smaller line was supported by vertical rod hangers and U-bolts; the piping penetrates a block wall where the valves and pressure sensors are mounted. It was demonstrated by tug test that the piping position retention will be reasonably maintained by the system dead weight supports under normal and earthquake loading, if the seismic adequacy of the block wall from which the piping is supported is verified.

8. DESCRIPTION OF OUTLIERS AND RESOLUTION

The outliers identified during the walkdown are described below along with the method of resolution or recommended action:

- Motor operated valve (2B21-F070) located on main steam drain line (3"φ) to the condenser has a potential seismic impact with the adjacent 4"φ rod supported piping. The clearance between motor operator and adjacent pipe is about 1". The point of potential interaction is about 11" away from the pipe penetration in the concrete wall which is filled with hard form material.

Resolution: 3"φ main steam drain line was previously analyzed seismically and the analysis result revealed that the combined thermal and seismic movement at the valve C.G. is less than 0.3". The 4"φ rod supported pipe was also found to be rigid enough by tug test performed by the walkdown team. Therefore, the outlier is determined to be acceptable as is.

- Vertical wide flange support for 2MS25-2951C is located close (about 1") to the drain line, 2MS25AC-2, and may potentially restrain the seismic movement of drain line which branches off from the 26"φ main steam header at about 2 feet from the potential interaction area.

Resolution: The seismic movement of the drain line at the potential interaction area was reviewed and found to be less than 1". Furthermore, the drain line moves away from the vertical WF during plant operation and the outlier is determined to be acceptable as is.

- Potential seismic interaction exists between the motor operator of valve 2B21-F020 on line 2MS19B-3 (warm-up by-pass line) and adjacent valve 2FW070B (about 1" clearance).

Resolution: Review of the thermal and seismic movements of the valves from the existing piping analysis shows that the interaction will not occur and the outlier is acceptable as is.

- Process sampling line (2MSA1AB-3/4") branching off from the 26"φ MS line runs close to the structural wall (about 2" from the pipe insulation), which may restrict branch line seismic movement.

Resolution: The combined thermal and seismic movement of the header at the branch connection was reviewed from the existing piping analysis and found to be less than 1". Therefore, the outlier is acceptable as is.

- Process sampling line has no automatic or powered isolation valve to isolate leak path.

Resolution: Not acceptable as is. One of the following actions needs to be taken.

1. Radiological effect of leakage path should be evaluated.

2. Automatic/reliable powered isolation should be installed.
3. Manual isolation valve should be controlled closed administratively.

- Pressure sensing lines (2MS93AA/AB/AC/AD-1 and 2MS68AB/BB-1) penetrate a block wall, and valves and pressure sensors are mounted on the other side of the block wall. There are also block walls close to the pressure sensors. These walls may impact the sensors if they fail.

Resolution: Not acceptable as is. Seismic adequacy of the block walls should be verified for these lines. The walls should be reinforced, or isolation method be provided.

## 9. CONCLUSION

LaSalle Unit 2 plant-specific verification of seismic adequacy of main steam piping, associated branch lines including drain, warm-up, process sampling lines and condenser has been performed based on the guidelines in NEDC-31858P (Reference 10.3), to provide reasonable assurance of the seismic integrity of these systems and components. The design method for the majority of the piping and supports under the scope of review is consistent with seismic Category I qualification method and design margins are expected to be adequate to assure good seismic performance.

All outliers identified during the field walkdown were resolved by review of existing analysis or design drawing. The two outliers requiring additional actions are listed below.:

1. One of the following actions needs to be taken for the process sampling line.
  1. Radiological effect of leakage path should be evaluated.
  2. Automatic/reliable powered isolation should be installed.
  3. Manual isolation valve should be controlled closed administratively.
2. Seismic adequacy of the block wall where pressure sensing instrument lines are supported and the block walls located close to the pressure sensors need to be verified. If this shows an unacceptable condition, the walls should be reinforced or isolation method be provided for these lines.

In addition, in all the areas walked down, the team observed that the cable trays, conduits, and HVAC ducts are well supported to consider them as seismically rugged.

The turbine building has been shown through design document review to be capable of resisting the safe shutdown earthquake.

Review of the condenser location, shell thickness and test qualification, and the seismic capability of the anchorage indicates that the condenser design is adequate to resist the safe shutdown earthquake.

10. **REFERENCES**

- 10.1 "Seismic Response Spectra Design Criteria", LaSalle County Nuclear Power Station Units 1 and 2, DC-SE-02-LS, Rev. 0, Sargent & Lundy Engineers
- 10.2 "Structural Department Project Design Criteria", LaSalle County Nuclear Power Station Units 1 and 2, DC-SE-01-LS, Rev. 6, Sargent & Lundy Engineers
- 10.3 "BWROG Report For Increasing MSIV Leakage Rate Limit and Elimination of Leakage Control Systems", NEDC-31858P, Rev. 2
- 10.4 "A Methodology for Assessment of Nuclear Plant Seismic Margin", EPRI NP-6041, Rev. 1
- 10.5 "Assessment of Non-Category I Piping for Protection of Safety-Related Components During Seismic and Pool Related Events", EMD-027211, Rev. 0, Sargent & Lundy Engineers

TABLE 1: LIST OF ISOLATION VALVES

Valve No.	Operator Type	Category	Remarks
2B21-F418A	Motor Operator	3	M-116 Sh3; Line 2MS38AA-18; Powered from 1E MCC 236X-2 (D4)
2B21-F418B	Motor Operator	3	M-116 Sh3; Line 2MS38AB-18; Powered from 1E MCC 236X-2 (D5)
2B21-MSV1	Hydraulic Operator	3	M-116 Sh3; Line 2MS01CB-28; Non-1E Source, Fail Closed on Loss of Power
2B21-MSV2	Hydraulic Operator	3	M-116 Sh3; Line 2MS01CA-28; Non-1E Source, Fail Closed on Loss of Power
2B21-MSV3	Hydraulic Operator	3	M-116 Sh3; Line 2MS01CD-28; Non-1E Source, Fail Closed on Loss of Power
2B21-MSV4	Hydraulic Operator	3	M-116 Sh3; Line 2MS01CC-28; Non-1E Source, Fail Closed on Loss of Power
2B21-F339A	Manual	1	M-116 Sh3; Branch Line from 2MS01BA-26
2B21-F339B	Manual	1	M-116 Sh3; Branch Line from 2MS01BB-26
2B21-F339D	Manual	1	M-116 Sh3; Branch Line from 2MS01BD-26
2B21-MSBPV1	Hydraulic Operator	3	M-116 Sh3; Line 2MS33AA-12; Non-1E Source, Fail Closed on Loss of Power
2B21-MSBPV2	Hydraulic Operator	3	M-116 Sh3; Line 2MS33AB-12; Non-1E Source, Fail Closed on Loss of Power
2B21-MSBPV3	Hydraulic Operator	3	M-116 Sh3; Line 2MS33AC-12; Non-1E Source, Fail Closed on Loss of Power
2B21-MSBPV4	Hydraulic Operator	3	M-116 Sh3; Line 2MS33AD-12; Non-1E Source, Fail Closed on Loss of Power
2B21-MSBPV5	Hydraulic Operator	3	M-116 Sh3; Line 2MS33AE-12; Non-1E Source, Fail Closed on Loss of Power
2B21-F020	Motor Operator	1	M-116 Sh7; Line 2MS19B-3; Powered from 1E MCC 236Y-1 (A2)
2B21-F071	Motor Operator	3	M-116 Sh7; Line 2MS27A-1; Powered from 1E MCC 236X-3 (B3)
2B21-F073	Motor Operator	3	M-116 Sh7; Line 2MS30B-1; Powered from 1E MCC 236X-3 (C3)

**TABLE 1: LIST OF ISOLATION VALVES**

Valve No.	Operator Type	Category	Remarks
2B21-F302A	Manual	1	M-116 Sh7; Branch Line from 2MS25AA-2
2B21-F302B	Manual	1	M-116 Sh7; Branch Line from 2MS25AB-2
2B21-F302C	Manual	1	M-116 Sh7; Branch Line from 2MS25AC-2
2B21-F302D	Manual	1	M-116 Sh7; Branch Line from 2MS25AD-2
2B21-F306A	Manual	1	M-116 Sh7; Branch Line from 2MS28AA-2
2B21-F306B	Manual	1	M-116 Sh7; Branch Line from 2MS28AB-2
2B21-F306C	Manual	1	M-116 Sh7; Branch Line from 2MS28AC-2
2B21-F306D	Manual	1	M-116 Sh7; Branch Line from 2MS28AD-2
2B21-F028A	Air Operated	2	M-116 Sh2; Line 2MS01BA-26; RPS BUS "B", Fail Closed on Loss of Air
2B21-F028B	Air Operated	2	M-116 Sh2; Line 2MS01BB-26; RPS BUS "B", Fail Closed on Loss of Air
2B21-F028C	Air Operated	2	M-116 Sh2; Line 2MS01BC-26; RPS BUS "B", Fail Closed on Loss of Air
2B21-F028D	Air Operated	2	M-116 Sh2; Line 2MS01BD-26; RPS BUS "B", Fail Closed on Loss of Air

**TABLE 1A: LIST OF DRAIN PATH VALVES**

Valve No.	Operator Type	Category	Remarks
2B21-F070	Motor Operator	4	M-116 Sh7; Line 2MS25B-3, Powered from 236X-2(F2)
2B21-F072	Motor Operator	4	M-116 Sh7; Line 2MS28B-3, Powered from 236X-2(F3)



TABLE 2: PIPING SYSTEM DESIGN PARAMETERS

SYSTEM DESCRIPTION	PIPING DESIGN CODE	DESIGN TEMP. (°F)	DESIGN PRESSURE (psig)	PIPE SIZE	SCH. OR THICKNESS	D/T	SUPPORT TYPES	LOADINGS CONSIDERED
MSIVs to the MSVs, the MS Bypass Valves and 2B21-F418A(B)	ASME III ANSI B31.1	575	1250	36"	1.335"	27	Springs Struts Concrete anchors	Weight Thermal Seismic Steam Hammer
				26"	.967" min.	27		
				28"	1.041" min.	27		
				18"	Sch. 80	19		
MS Drain Lines to the Condenser and 2B21-F071 (073). MS Drain Branch Lines	ASME III ANSI B31.1	575	1250	2"	Sch. 80	11	Springs Struts Box types U-bolts Snubber Structural anchor	Weight Thermal Seismic
				3"		12		
				12"		19		
				1"		7		
MS Warm-up Bypass Lines to 2B21-F020	ASME III ANSI B31.1	575	1250	3"	Sch. 80	12	Springs Struts Snubbers Rod Hanger	Weight Thermal Seismic
				2"		11		
MS Process Sampling Line	ASME III ANSI B31.1	575	1250	3/4" 1/2"	Sch. 160 .109" min.	5 8	U-bolts Tube clamps	Weight Thermal Seismic
Pressure Sensing Line	ANSI B31.1	575	1250	1"	Sch. 80&160 Sch. 80 Sch. 160	7&5	Rod hanger U-bolts	Weight Thermal
				3/4"		7		
				1/2"		4		

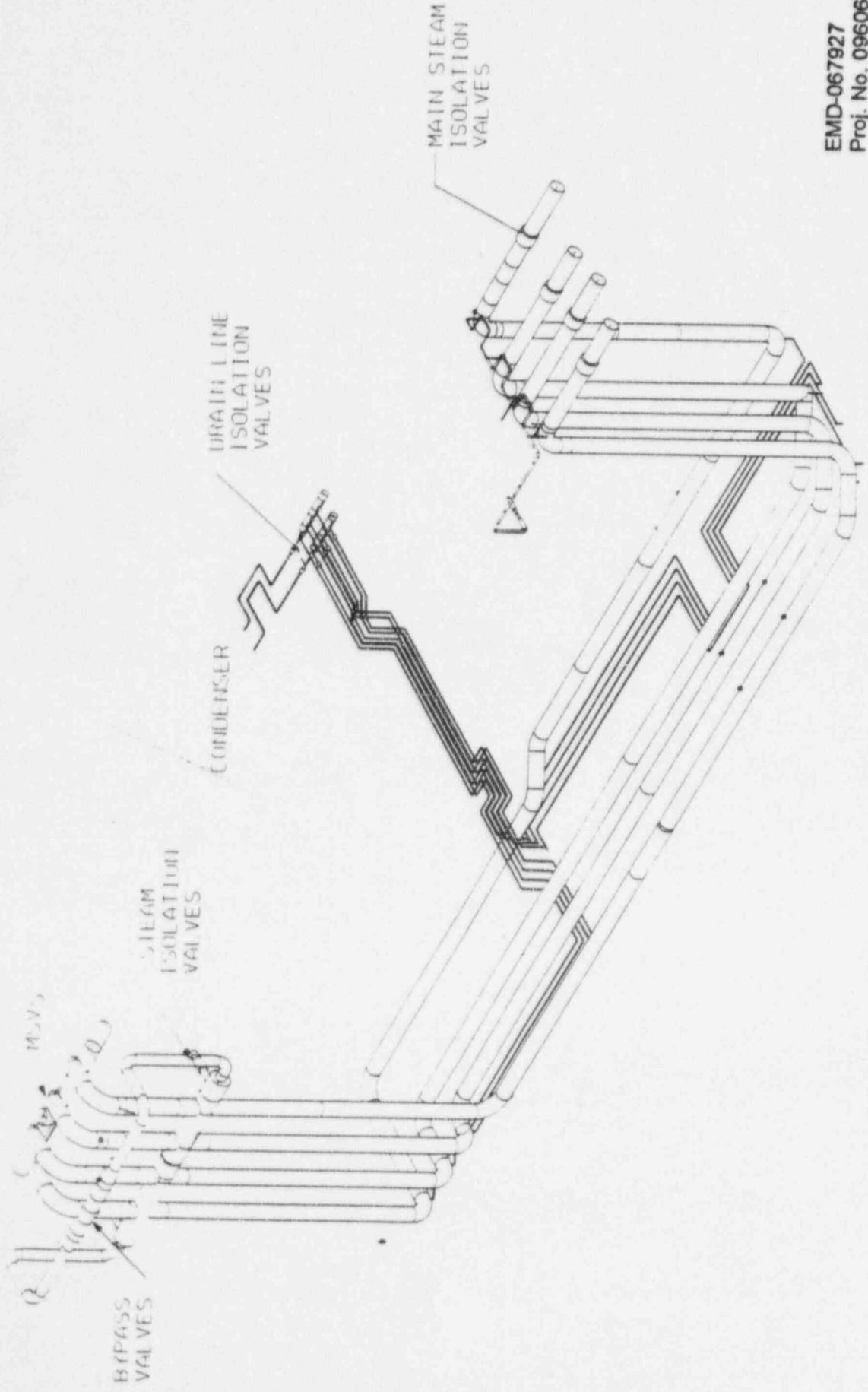
TABLE 3: OUTLIER IDENTIFICATION AND RESOLUTION

SYSTEM DESCRIPTION	OUTLIER DESCRIPTION	RESOLUTION STATUS	REQUIRED ACTION
Main Steam Drain to Condenser in The TB	MOV 2B21-F070 located on the 3"φ drain line has a potential seismic interaction with the adjacent 4"φ piping (about 1" clearance).	Acceptable as is by analysis and field tug test performed for 4"φ piping.	None
	Vertical WF support for 2MS25-2951C is located close (about 1") to the drain line, 2MS25AC-2 and may potentially restrict branch pipe movement due to a large header. The same condition also exists for line 2MS25AD-2. The drain lines branch off from the 26"φ main steam line at about 2 ft. from the supports.	Acceptable as is by analysis. No interaction will occur based on the analysis results.	None
Main Steam Warm-Up Bypass	Potential seismic interaction exists between the operator of MOV 2B21-F020 on line 2MS19B-3 and adjacent valve 2FW070B (about 1" clearance)	Acceptable as is by analysis. No interaction will occur based on the analysis results.	None

TABLE3: OUTLIER IDENTIFICATION AND RESOLUTION (CONT.)

EMD-067927  
 Proj. No: 09606-069  
 Rev.: 2  
 Page 19

SYSTEM DESCRIPTION	OUTLIER DESCRIPTION	RESOLUTION STATUS	REQUIRED ACTION
Main Steam Process Sampling	<p>Sampling line (2MSA1AB-3/4") branching off from the 26"φ MS line runs close to the structural wall (about 2" from the piping insulation), which may impose a potential restriction on pipe seismic movement.</p> <hr/> <p>Process sampling line has no automatic or powered isolation to isolate leak path.</p>	<p>Acceptable as is by analysis. No interaction with the wall will occur based on the analysis results.</p> <hr/> <p>Not acceptable as is.</p>	<p>None</p> <hr/> <p>One of the following actions needs to be taken.</p> <ol style="list-style-type: none"> <li>1. Radiological effect of leakage path should be evaluated.</li> <li>2. Automatic/reliable powered isolation should be installed.</li> <li>3. Manual isolation valve should be controlled closed administratively.</li> </ol>
Main Steam Pressure Sensing Line	Pressure sensing lines (2MS93AA/AB/AC/AD-1 and 2MS68AB/BB-1) penetrate the block wall where valves and pressure sensors are mounted.	Not acceptable as is.	Seismic adequacy of block walls has to be verified. Reinforcement or isolation method should be provided if necessary.



EMD-067927  
 Proj. No. 09606-069  
 Rev. 2  
 Page 20

FIGURE 1: ISOMETRIC VIEW OF LEAKAGE CONTROL PATH

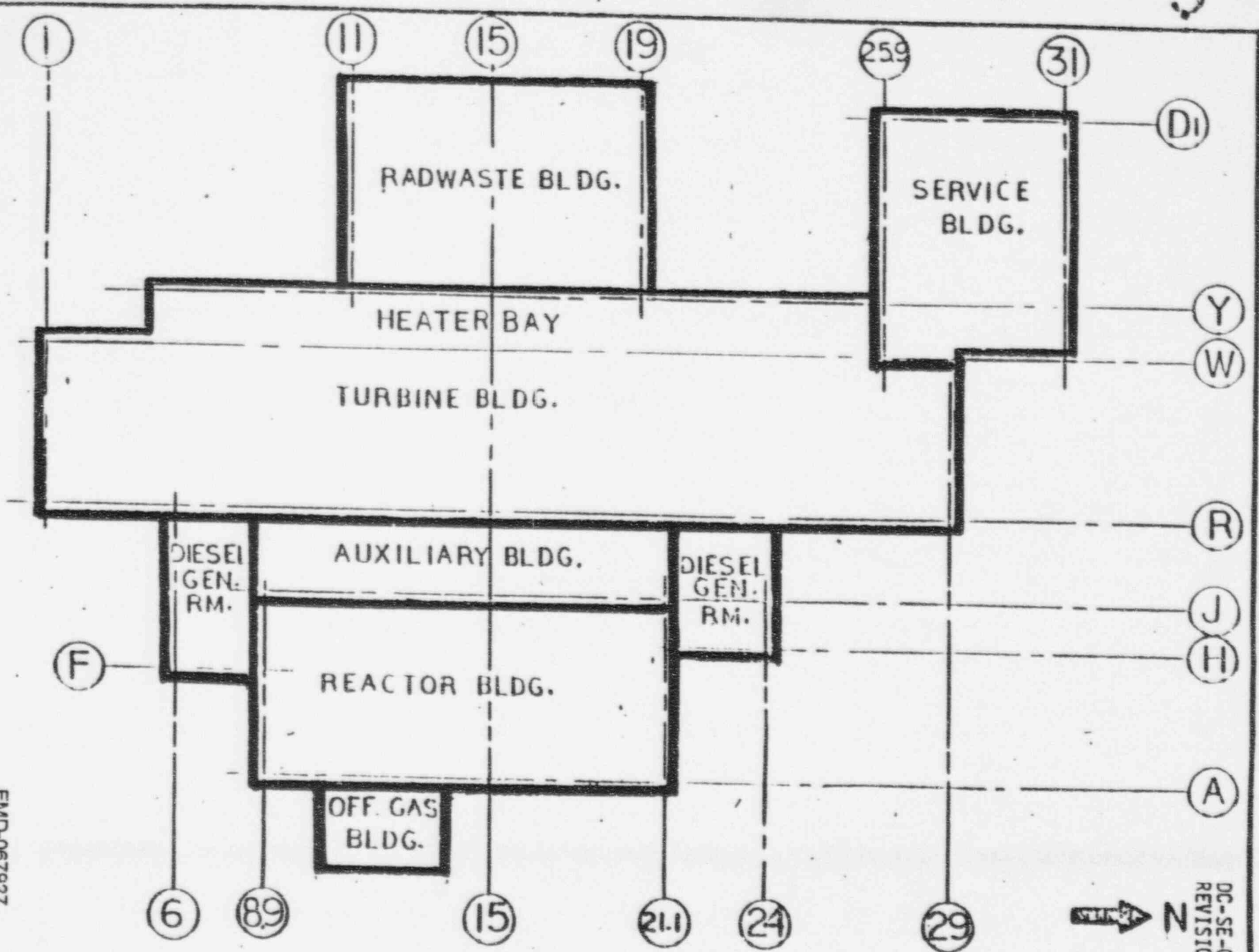


FIGURE 2 : KEY PLAN FOR LA SALLE COUNTY STATION

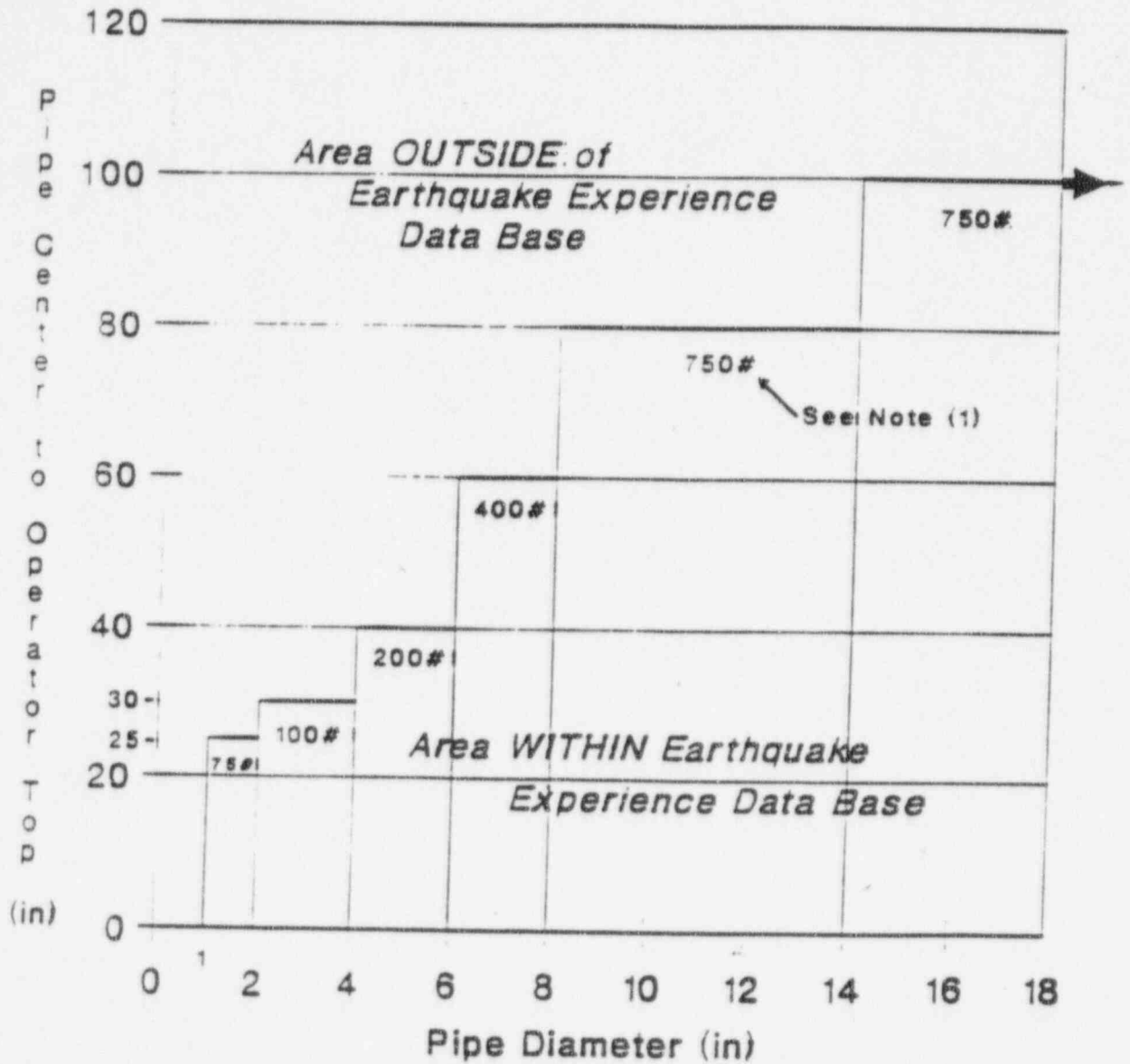
UNITS 1 AND 2

EMD-067927  
 Proj. No. 09606-069  
 Rev. 2  
 Page 21

UNIT 1      UNIT 2

DC-SE-02-15  
 REVISION 0

Heavy Valve Operator  
 Cantilever Limits



(1) Approximate Maximum Operator Weights Given for Various Ranges of Pipe Diameter

Figure 4 : Valve Operator Cantilever Length Limits

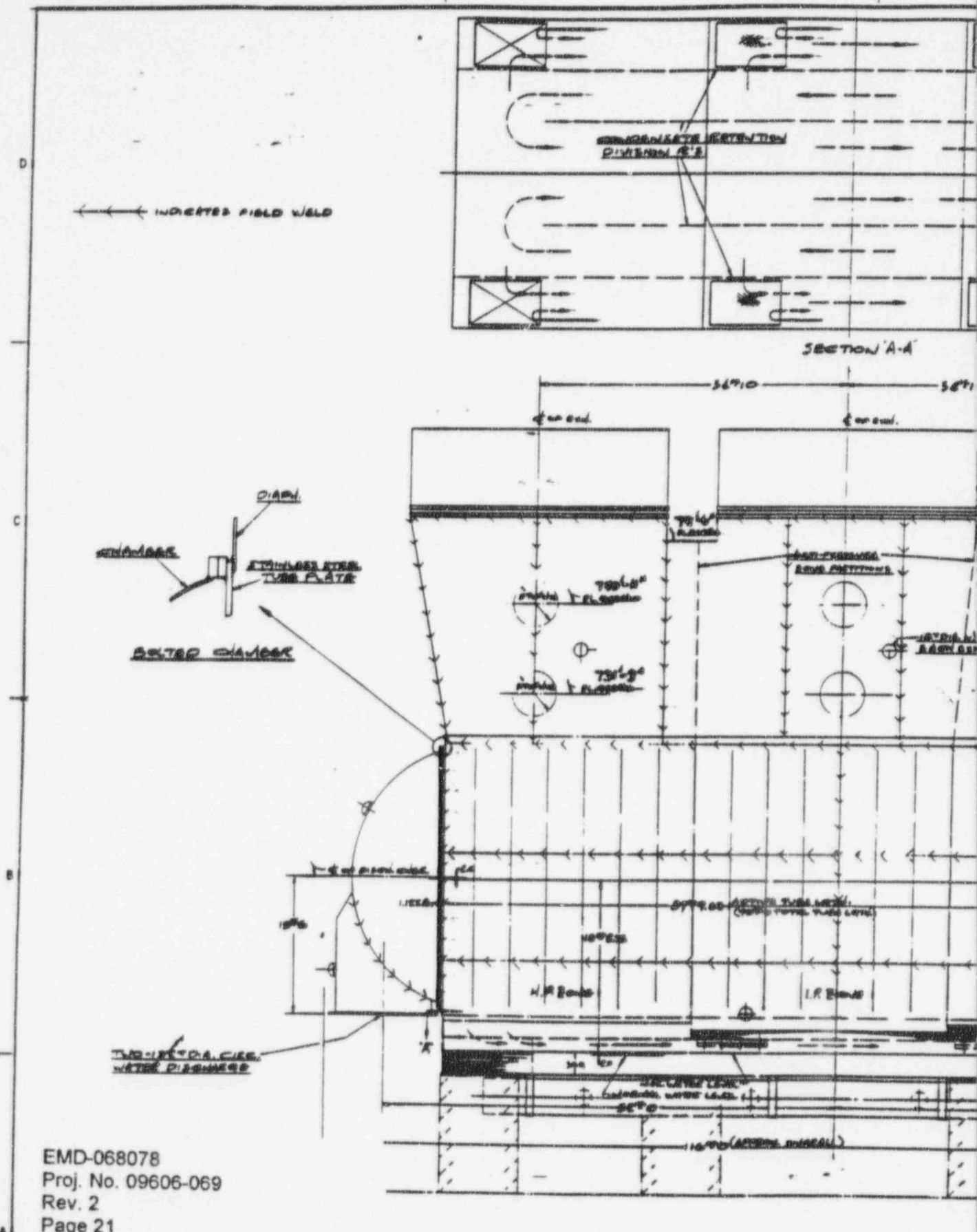


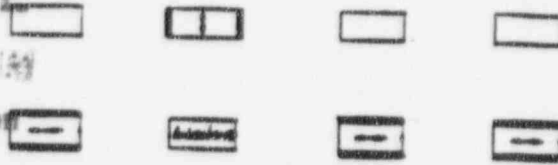
FIGURE 3 : CONDENSER OUT LINE DRAWING

NO.	REV.	DATE	BY	CHKD.
1				
2				
3				
4				
5				
6				
7				
8				
9				
10				

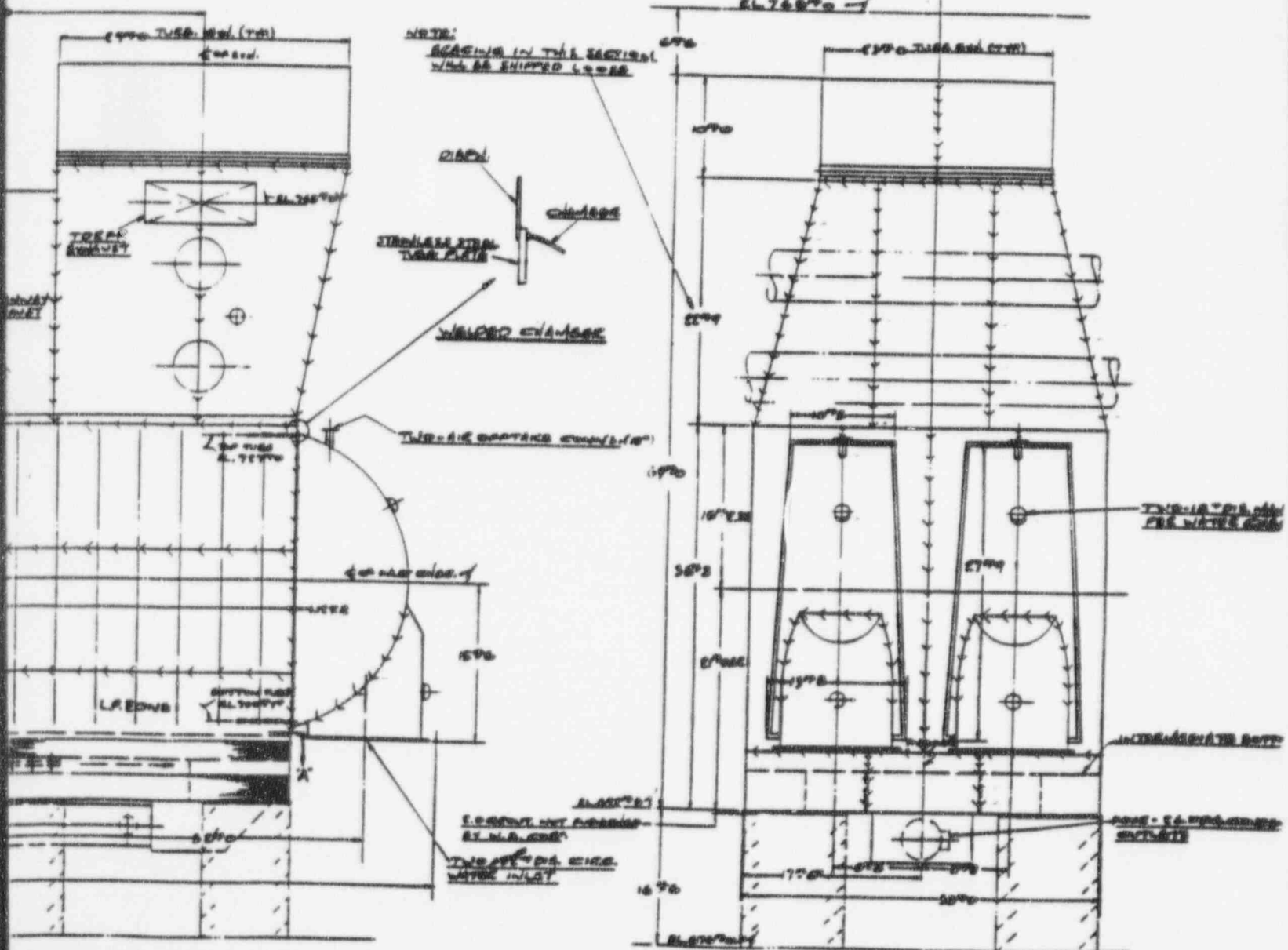
PROPOSED FOR: COMMONWEALTH Edison Co.  
LESLIE COUNTY STATION UNIT #188

# ANSTEC APERTURE CARD

Also Available on  
 Aperture Card



CONDENSED ANALYSIS  
 ASSIGNMENT



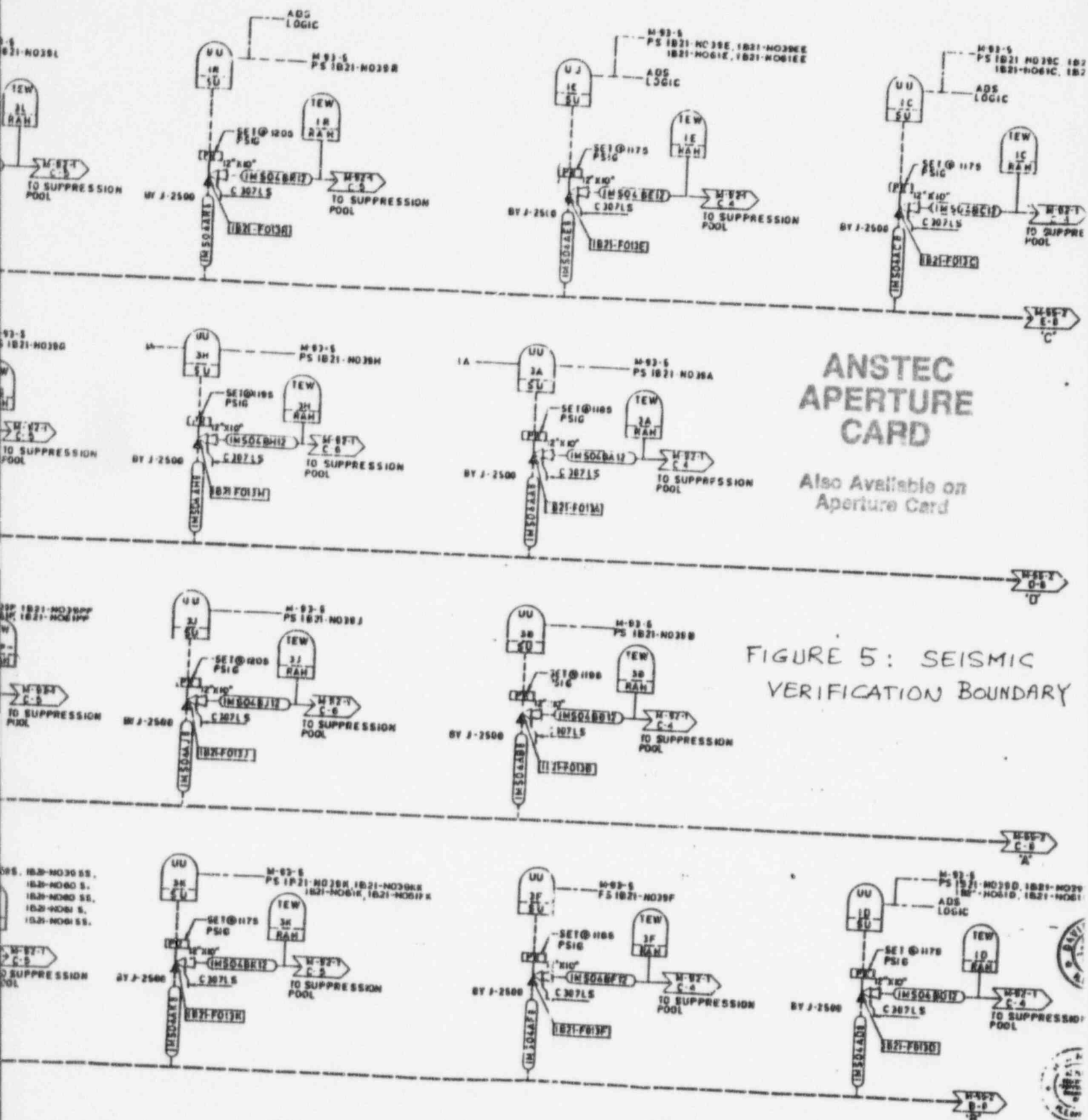
THIS DRAWING IS THE PROPERTY OF THE ENGINEERING DEPARTMENT OF THE COMMONWEALTH EDISON COMPANY AND IS NOT TO BE REPRODUCED OR TRANSMITTED IN ANY FORM OR BY ANY MEANS, ELECTRONIC OR MECHANICAL, INCLUDING PHOTOCOPYING, RECORDING, OR BY ANY INFORMATION STORAGE AND RETRIEVAL SYSTEM, WITHOUT THE WRITTEN PERMISSION OF THE ENGINEERING DEPARTMENT OF THE COMMONWEALTH EDISON COMPANY.

9509070287-01

DATE	1/11/50
BY	J. W. HARRIS
CHECKED BY	
APPROVED BY	
SCALE	AS SHOWN
PROJECT NO.	7504







NOTES:  
 1. ALL PIPING SHOWN AS BROKEN LINES AND ALL SAFETY RELIEF VALVES ARE FURNISHED BY J-2500 AND INSTALLED BY J-2500

← SQUG

9509070287-02

SAFETY-RELATED ITEMS ARE SHOWN ON THIS DRAWING FOR SAFETY CLASSIFICATION OF PIPING COMPONENT VALVE OR INSTRUMENT LIST 1				P & ID MAIN STEAM	
DRAWING RELEASE BLOCK				LA SALLE COUNTY STATE UNIT 1 COMMONWEALTH EDISON CHICAGO ILLINOIS	
REV	DATE	DESCRIPTION	DRAWN	CHECKED	INCHG APPROVAL
N	3-8-90	REVISIONS FOR P&ID			
11	01-28-91	FOR PRELIMINARY REVIEW			

DATE	11-17-90
BY	PT
SCALE	AS SHOWN
PROJECT	LA SALLE COUNTY STATE UNIT 1
DRAWING NO.	M-55 SH

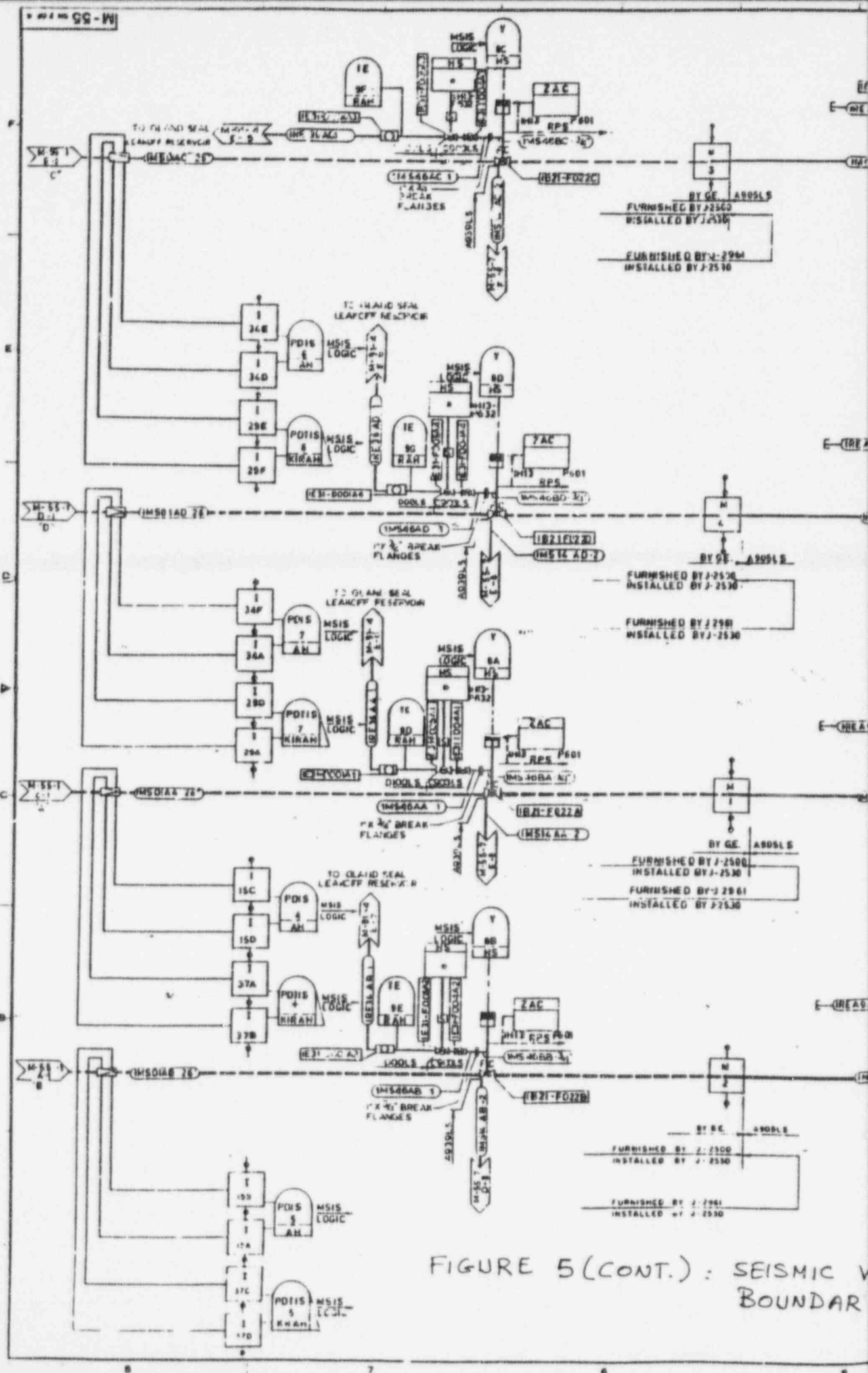
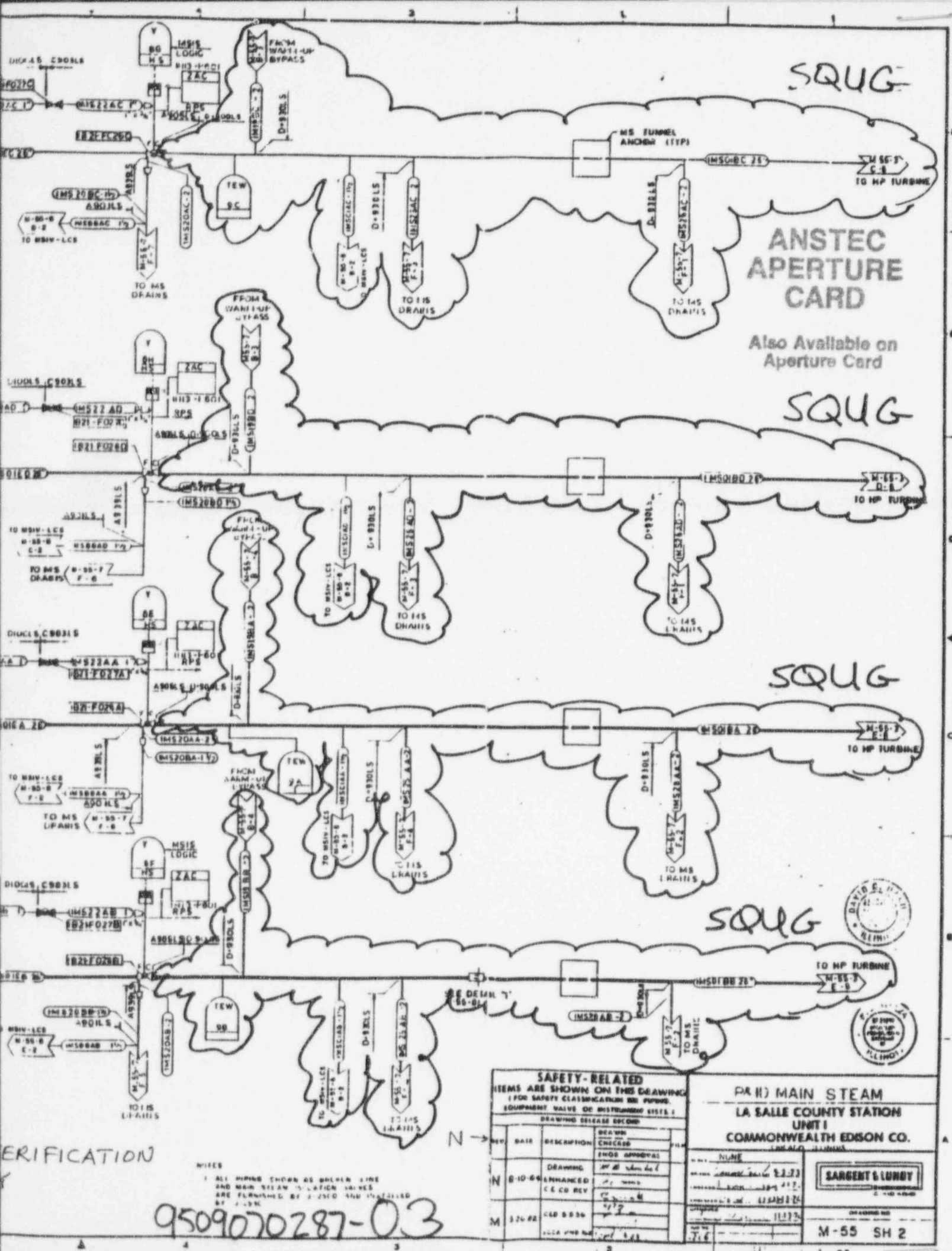


FIGURE 5 (CONT.): SEISMIC V BOUNDAR



SQUG

**ANSTEC APERTURE CARD**

Also Available on Aperture Card

SQUG

SQUG

SQUG



**SAFETY-RELATED**  
 ITEMS ARE SHOWN ON THIS DRAWING  
 FOR SAFETY CLASSIFICATION AND PUMP  
 EQUIPMENT VALUE OR INSTRUMENT RATING  
 DRAWING CHANGE RECORD

REV	DATE	DESCRIPTION	DESIGN CHECKED	ENGR APPROVAL
N	8-10-64	ENHANCED CE CO REV		
M	3-26-62	CE CO REV		

PR II) MAIN STEAM  
 LA SALLE COUNTY STATION  
 UNIT 1  
 COMMONWEALTH EDISON CO.  
 (LA SALLE PLANT)



M-55 SH 2

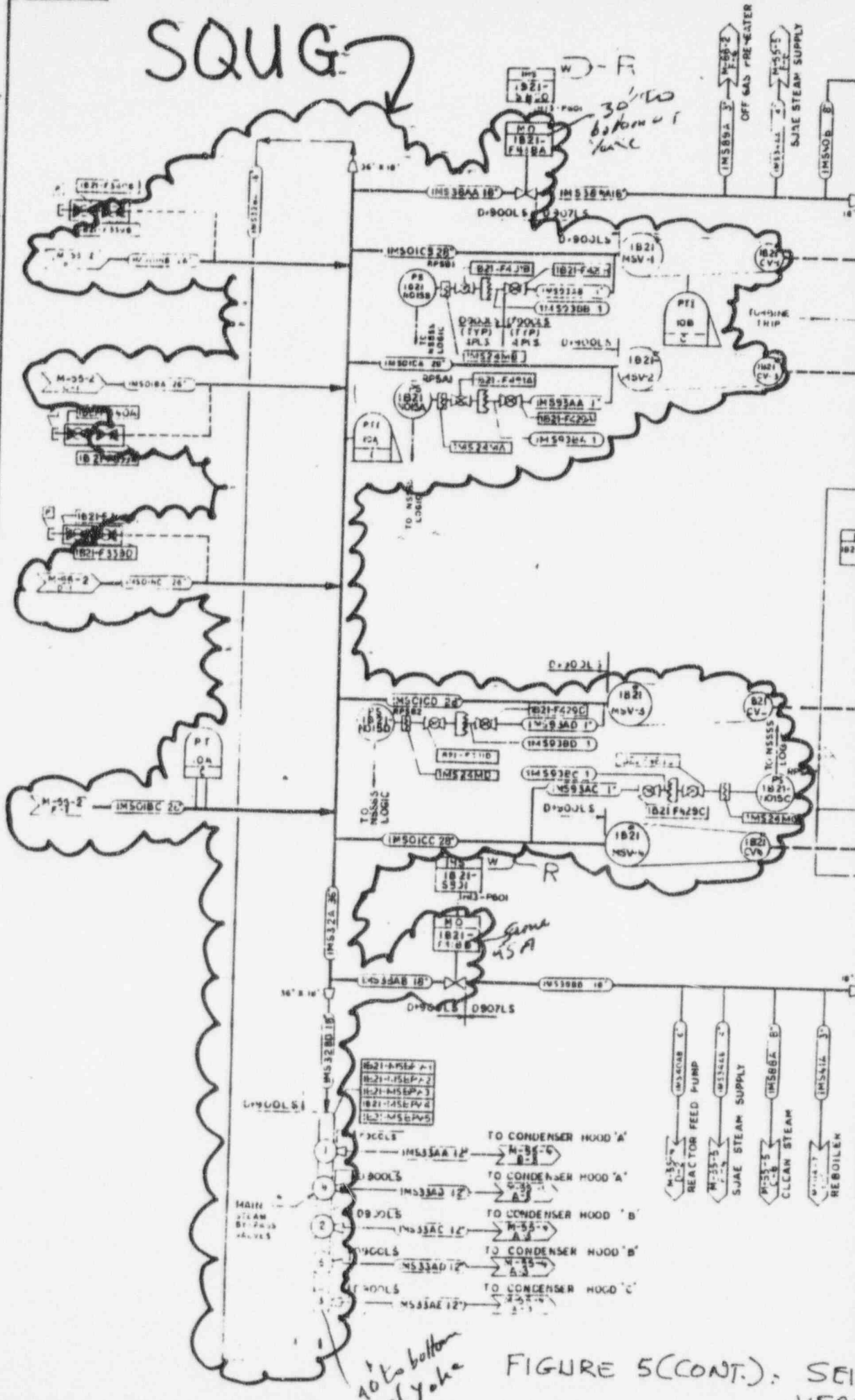
9509070287-0.3

VERIFICATION

NOTES  
 1 ALL PIPING SHOWN AS DASHED LINE  
 AND MAIN STEAM ISOLATION VALVES  
 ARE FURNISHED BY 2-250 AND INSTALLED  
 BY 2-534

# SQUIG

1V-11-13  
5-12-13  
Block inlets



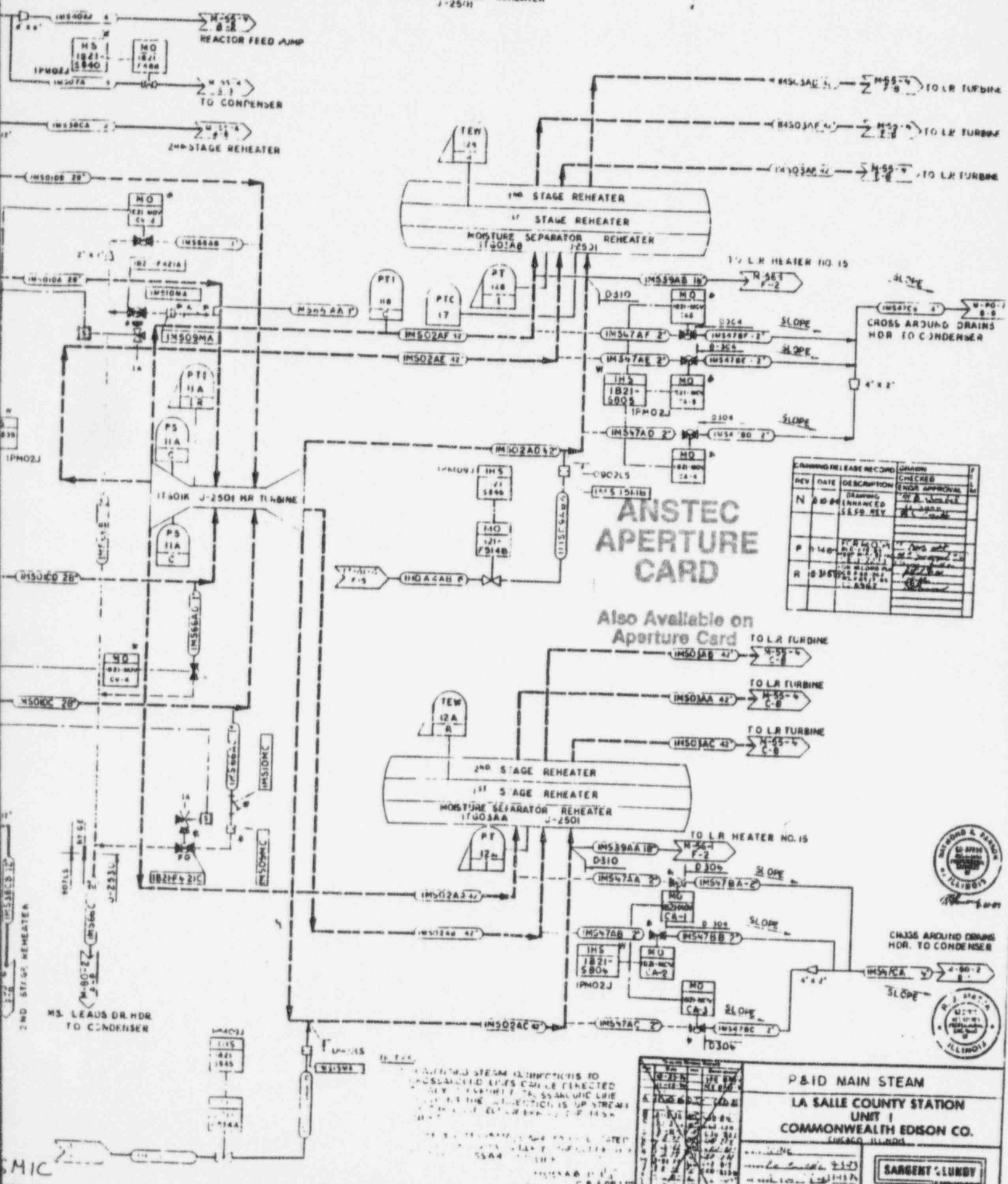
EMD-068078  
Proj. No. 09606-069  
Rev. 2  
Page 25

10 to bottom of Yoke

FIGURE 5 (CONT.): SEI VERI

1FG0IR  
TURBINE  
J-250H

1FG03AA 1FG03AB  
MOISTURE SEPARATOR REHEATER  
J-250H

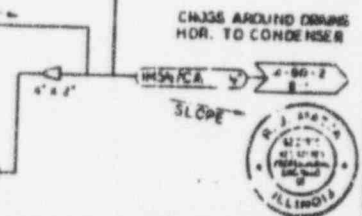


DRAWING RELEASE RECORD

REV	DATE	DESCRIPTION	DESIGNED	CHECKED	ENGR APPROVAL
N	8/20/68	DRAWING ENHANCED SELF KEY			
P	7/14/69				
R	8/28/69				

**ANSTEC APERTURE CARD**

Also Available on Aperture Card



**P&ID MAIN STEAM**  
**LA SALLE COUNTY STATION**  
**UNIT 1**  
**COMMONWEALTH EDISON CO.**  
CHICAGO, ILL. 60604

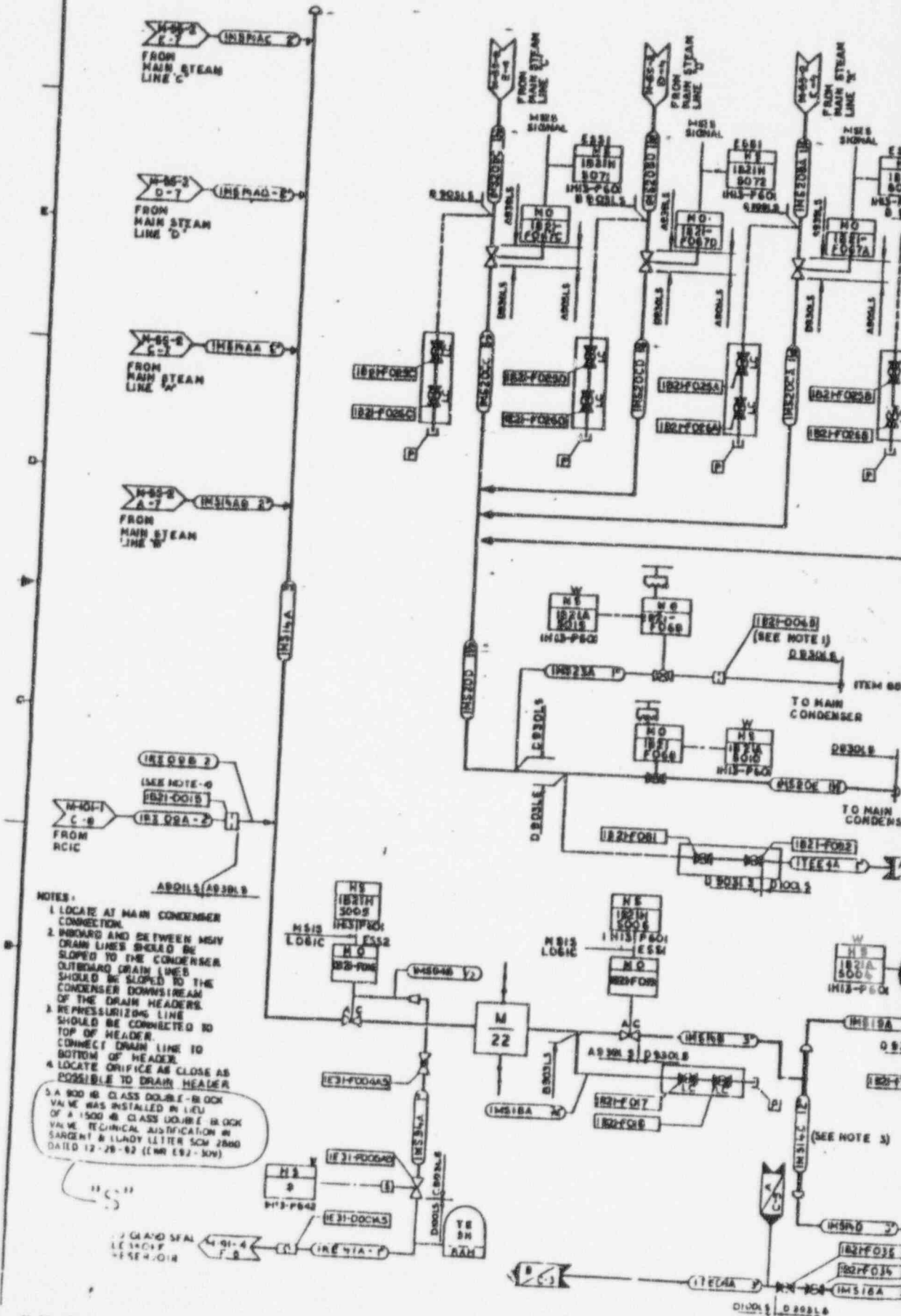
REVISIONS

NO.	DATE	DESCRIPTION
1	8-20-68	DRAWING ENHANCED SELF KEY
2	7-14-69	
3	8-28-69	

UNSATURATED STEAM IS INCLINED TO CONDENSED LINES CAN BE DETECTED ONLY BY VISUAL INSPECTION OF THE STEAM AT THE POINT OF INJECTION IS UP STREAM TO THE POINT OF INJECTION OF THE STEAM

0.1 MIC  
FICATION BOUNDARY 9509070287-04

M-55 SH.3 CF 9



- NOTES:
1. LOCATE AT MAIN CONDENSER CONNECTION.
  2. FORWARD AND BETWEEN MSIV DRAIN LINES SHOULD BE SLOPED TO THE CONDENSER. OUTWARD DRAIN LINES SHOULD BE SLOPED TO THE CONDENSER DOWNSTREAM OF THE DRAIN HEADERS.
  3. REPRESSURIZING LINE SHOULD BE CONNECTED TO TOP OF HEADER. CONNECT DRAIN LINE TO BOTTOM OF HEADER.
  4. LOCATE ORIFICE AS CLOSE AS POSSIBLE TO DRAIN HEADER.
5. A 900 LB CLASS DOUBLE-BLOCK VALVE WAS INSTALLED IN LIEU OF A 1500 LB CLASS DOUBLE-BLOCK VALVE. TECHNICAL JUSTIFICATION IN SARGENT & LUNDY LETTER SCH 2860 DATED 12-28-82 (CNR 192-KW).

EMD-068078  
 Proj. No. 09606-069  
 Rev. 2  
 Page 26

# ANSTEC APERTURE CARD

Also Available on Aperture Card

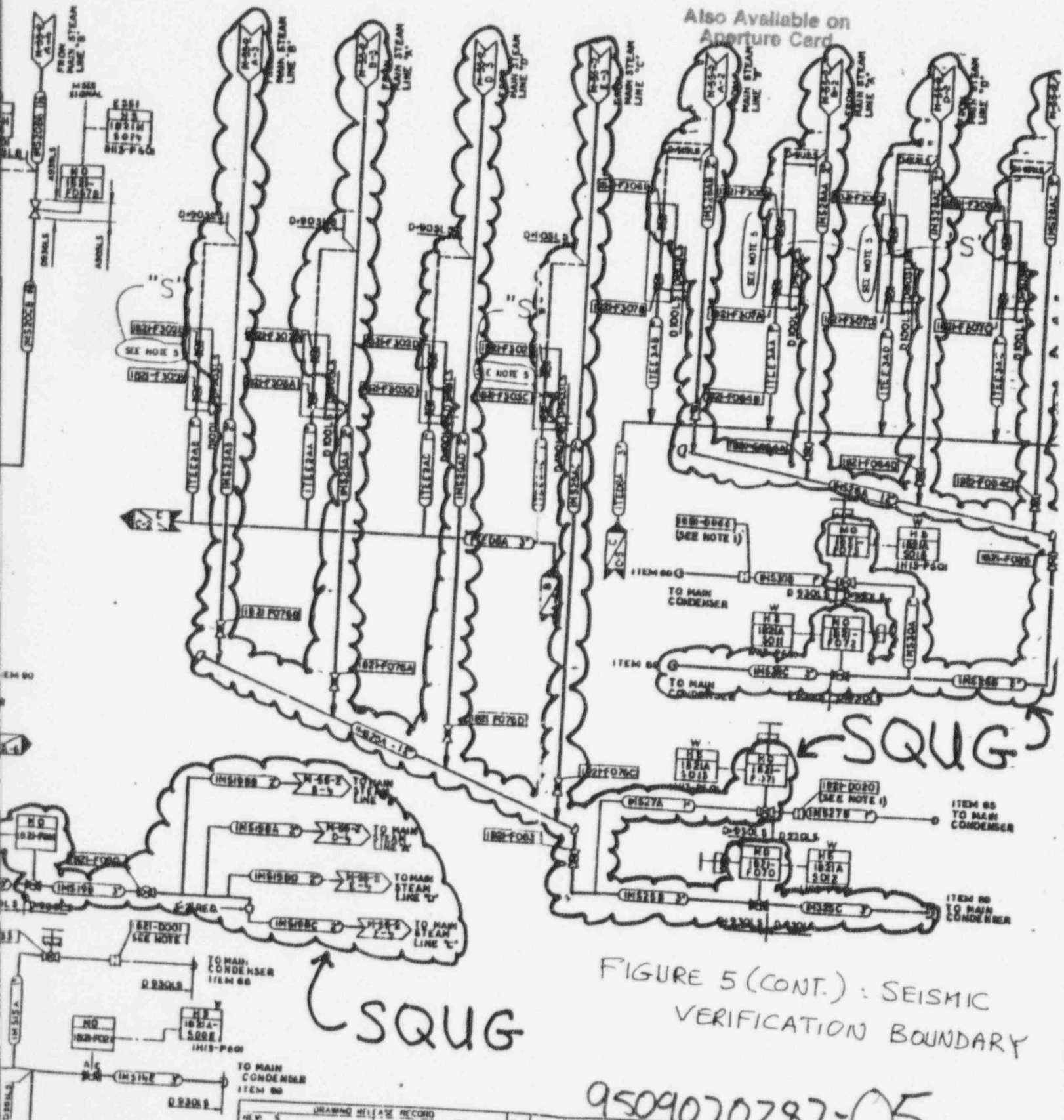


FIGURE 5 (CONT.) : SEISMIC VERIFICATION BOUNDARY

9509070287-05

REV. NO.	DESCRIPTION	DATE	BY	APPROVED	SCALE	UNIT
1	AS SHOWN PER ICR NO 92-132, P. 104 NO. 9208-874	02-10-94			1:1	

P&ID MAIN STEAM  
 A SATE COUNTY STATION  
 UNIT 1  
 COMMONWEALTH OF MASSACHUSETTS  
 NUCLEAR SAFETY RELATED EQUIPMENT RECORDING SYSTEM  
 DRAWING NO.



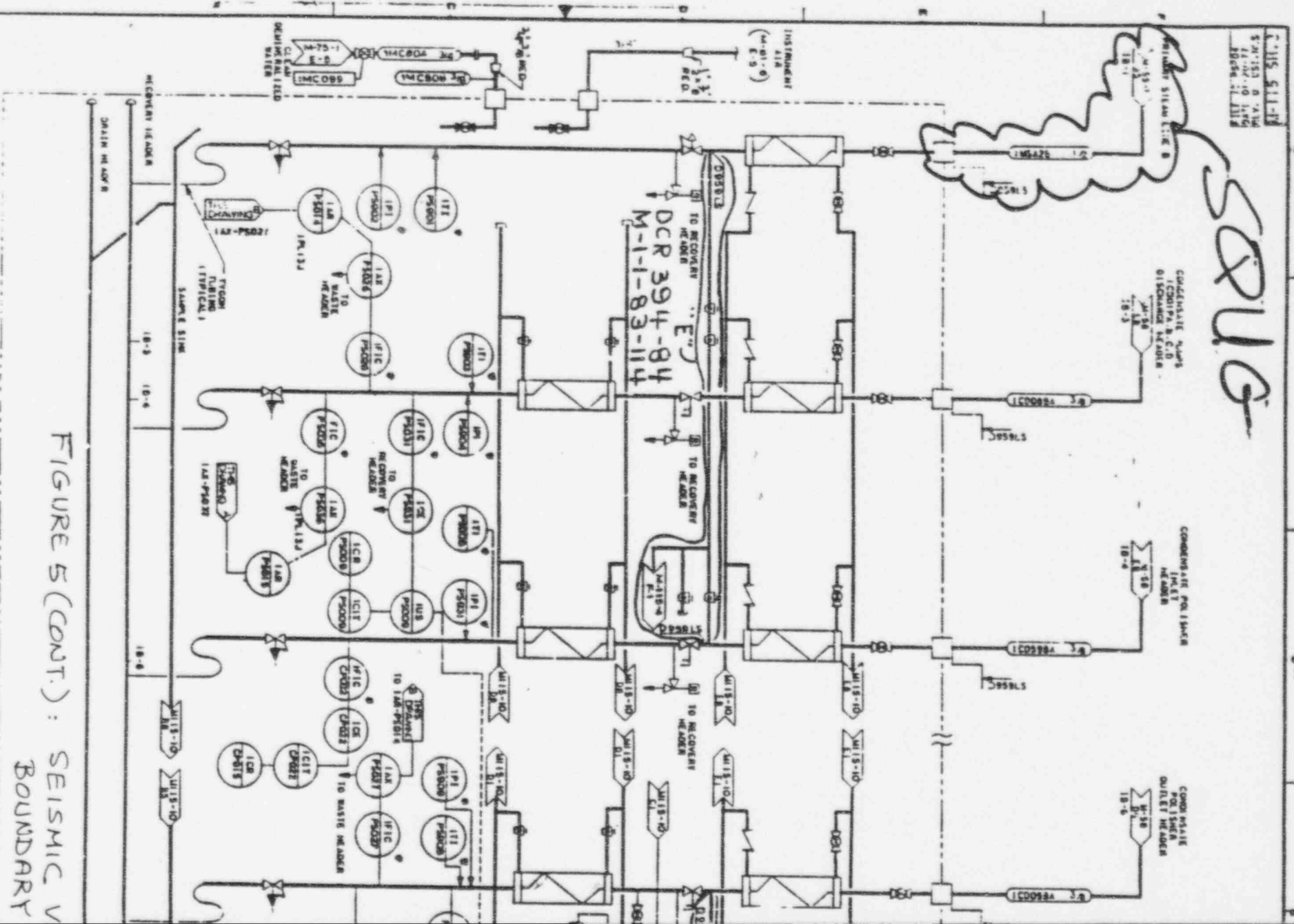
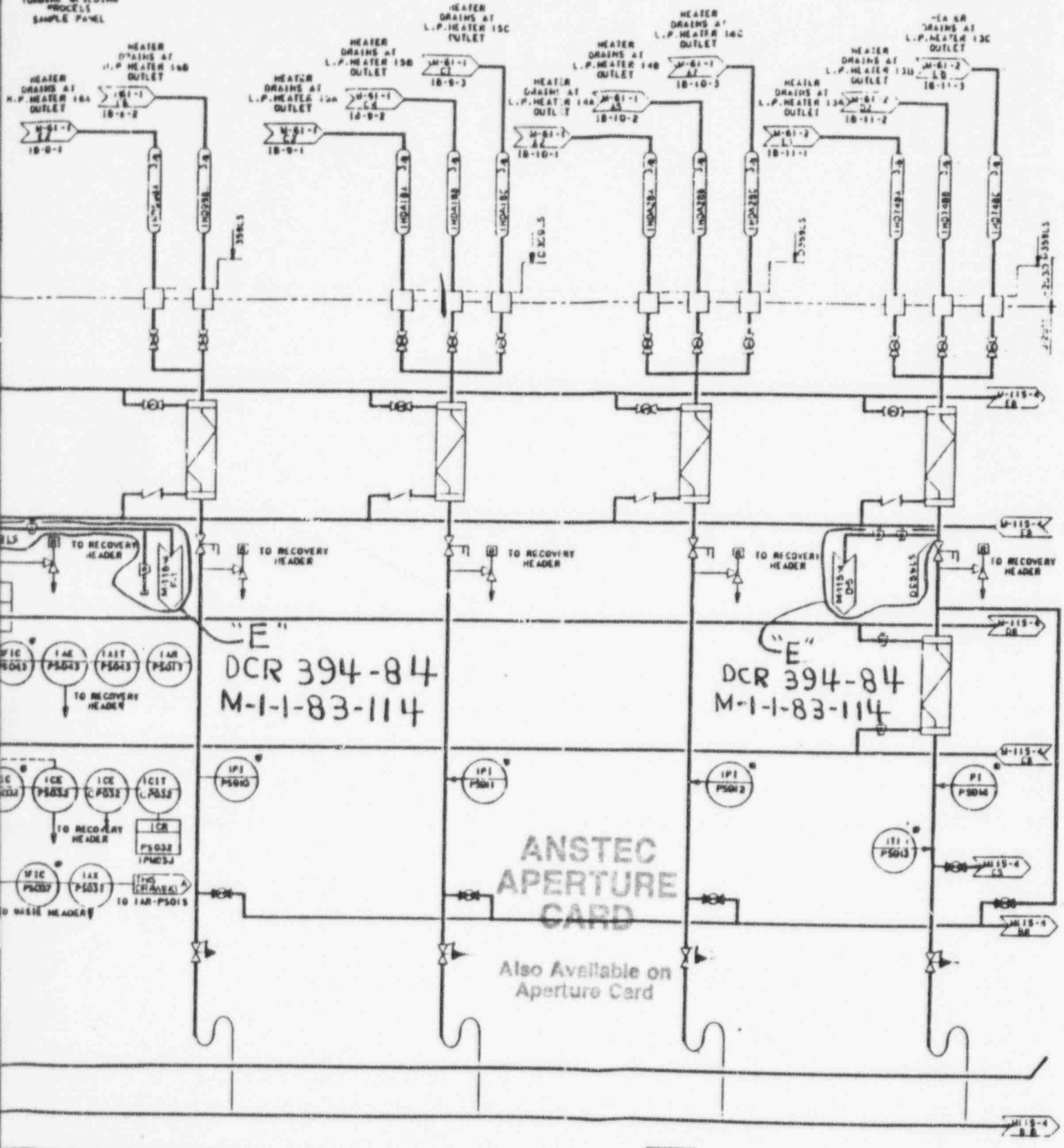


FIGURE 5 (CONT.): SEISMIC V BOUNDARY

IPL 3 J  
TURNING & SLIDING  
PROCELS  
SAMPLE PANEL



"E"  
DCR 394-84  
M-1-1-83-114

"E"  
DCR 394-84  
M-1-1-83-114

ANSTEC  
APERTURE  
CARD  
Also Available on  
Aperture Card

VERIFICATION

9509070287-06

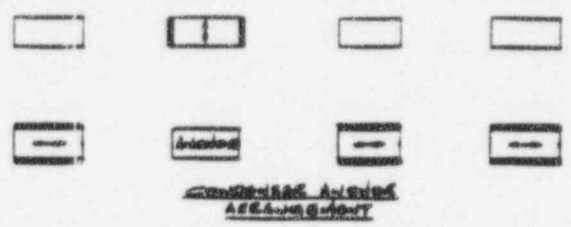
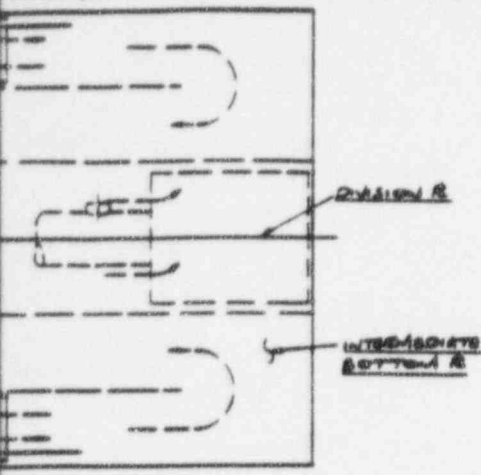
DRAWING RELEASE RECORD			
REV	DATE	BY	REASON



P.D.U. PROCESS SAMPLE	
LA SALLE COUNTY STATION UNIT 1 COMMERCIAL HEALTH EDISON CO. CHICAGO ILLINOIS	
SARGENT LUNDY	

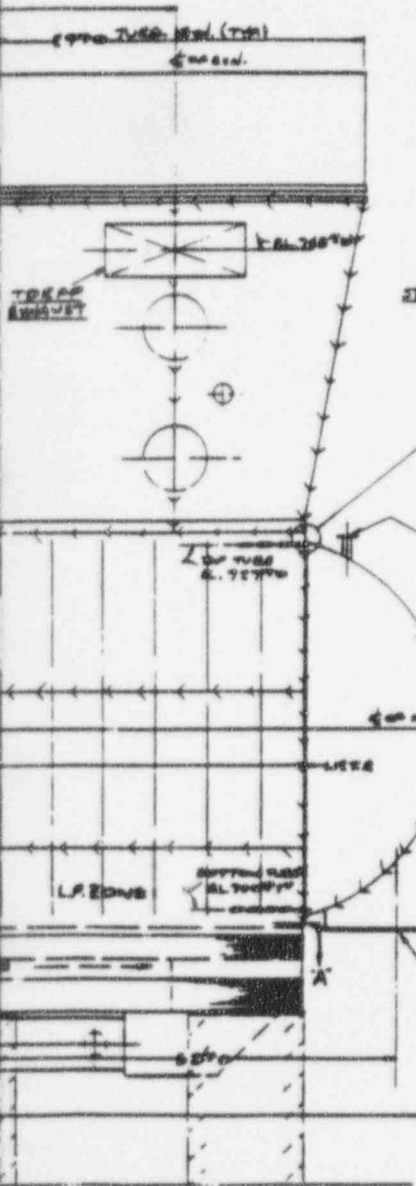


PROPOSED FOR: COMMONWEALTH EDISON CO.  
LEWIS COUNTY STATION UNIT # 1 BS

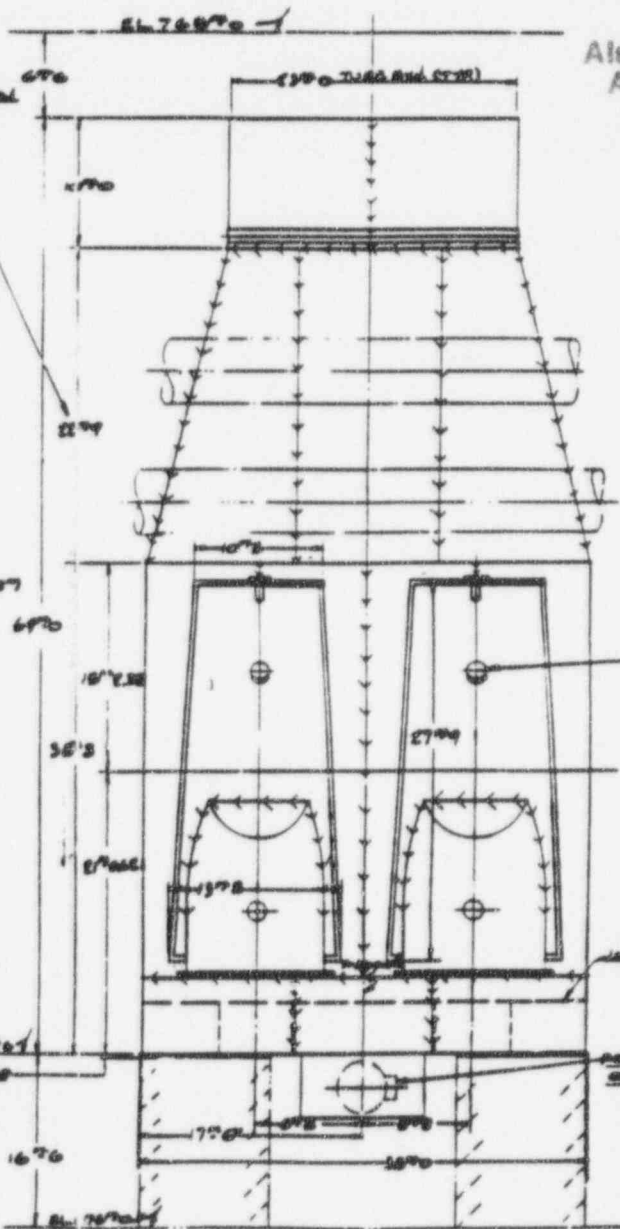
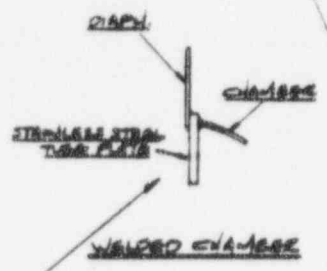


**ANSTEC  
 APERTURE  
 CARD**

Also Available on  
 Aperture Card



NOTE:  
 BEARINGS IN THIS SECTION  
 WILL BE SHIPPED LOOSE



TWO 1/2" DIA. CHAMBERS  
 FOR WATER COOL

INTERMEDIATE BOTTOM B

PORT - 1/2" DIA. 90° ELONG. 1/2" DIA. 90°

WATER INLET

LINE DRAWING

9509070287-07

REV	NO	DATE	BY	CHKD

Engineering Service Company  
 2200 GARDNER ST. S.W. ALBUQUERQUE, N.M.  
 THE CITYLINE  
 7306210

EMD-067927  
 Proj. No. 09606-069  
 Rev. 2  
 Page 24

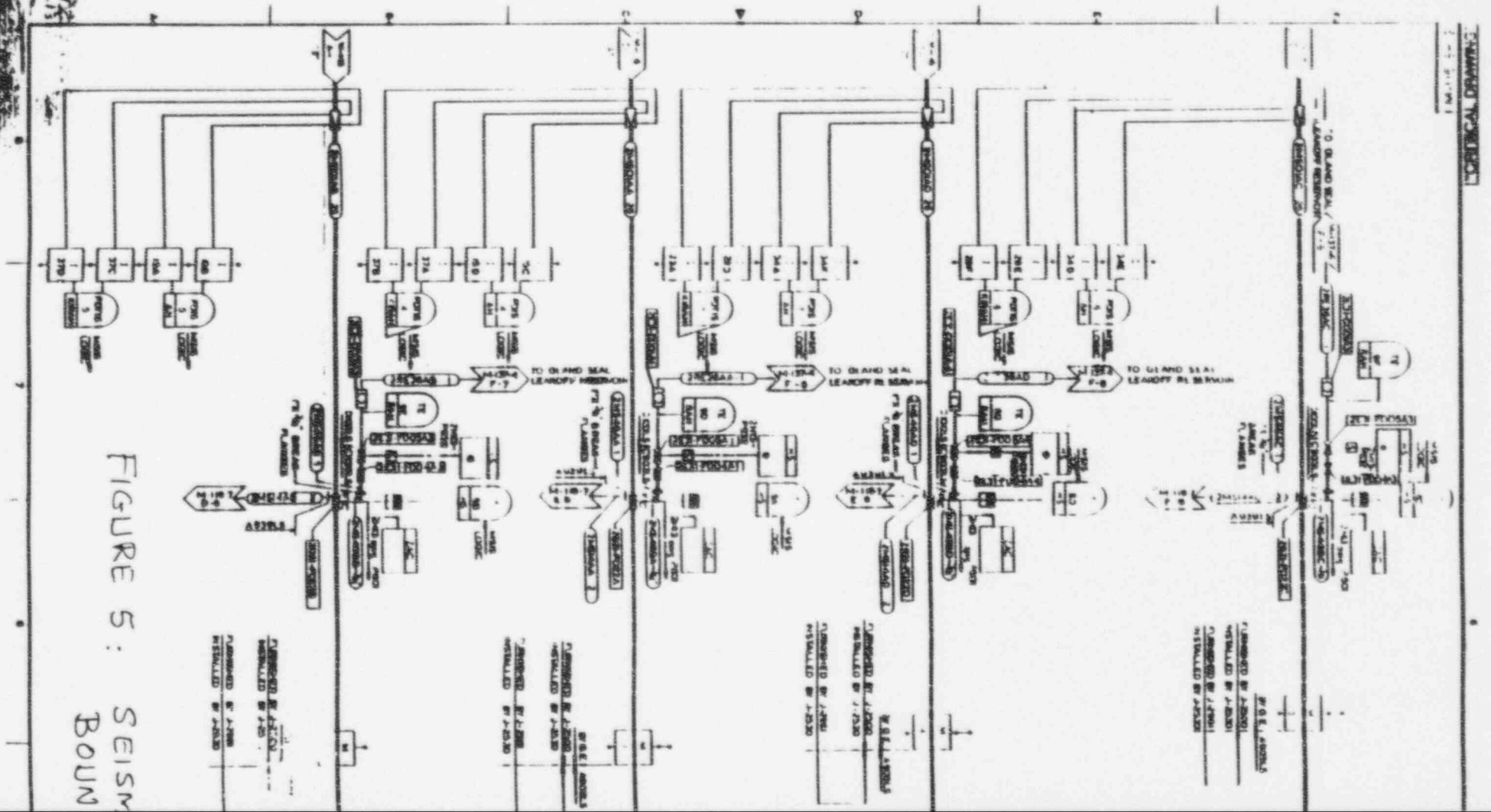


FIGURE 5:  
 SEISM  
 BOOM

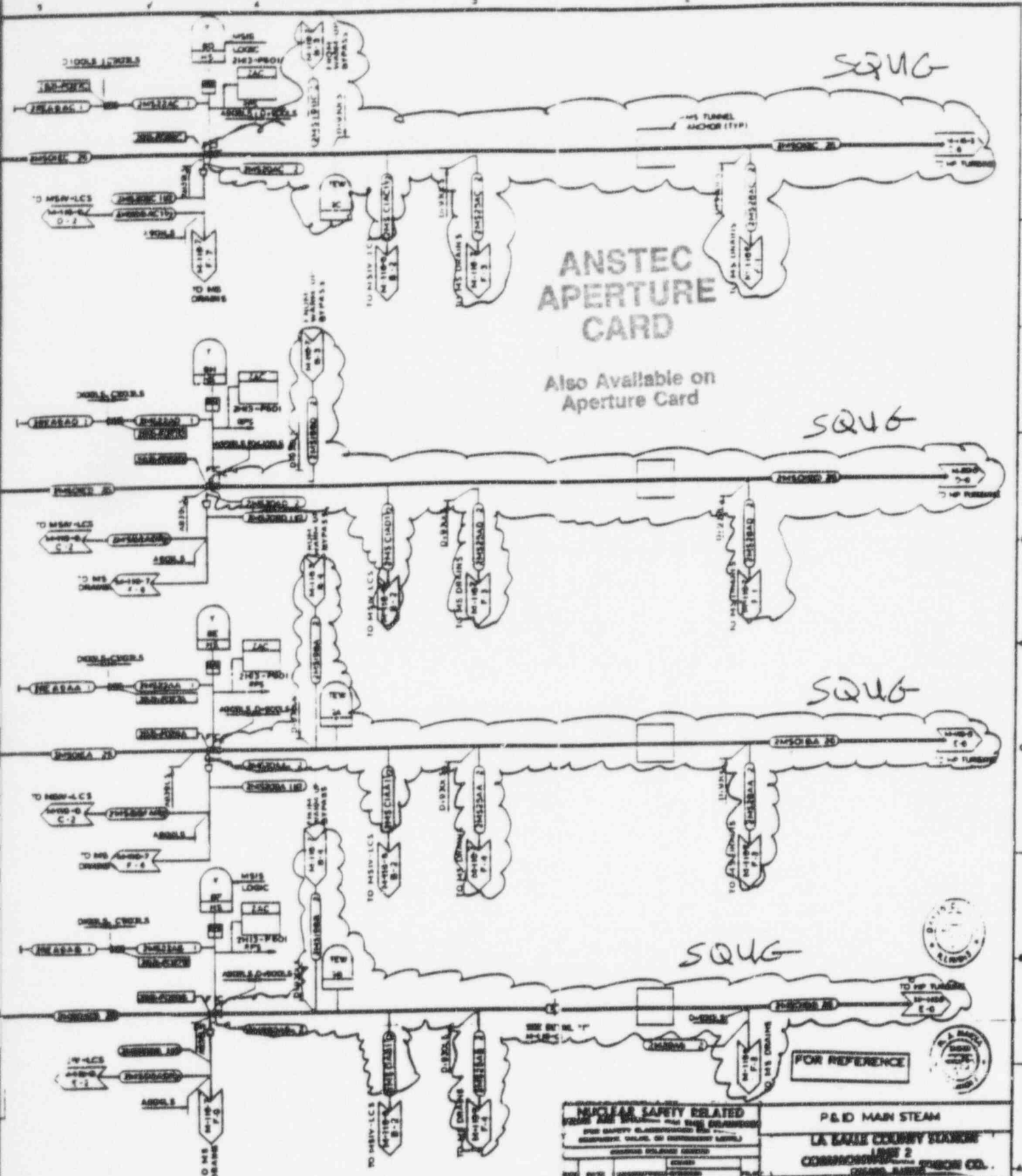
DESIGNED BY J. J. COLE  
 DRAWN BY J. J. COLE  
 CHECKED BY J. J. COLE  
 APPROVED BY J. J. COLE

DESIGNED BY J. J. COLE  
 DRAWN BY J. J. COLE  
 CHECKED BY J. J. COLE  
 APPROVED BY J. J. COLE

DESIGNED BY J. J. COLE  
 DRAWN BY J. J. COLE  
 CHECKED BY J. J. COLE  
 APPROVED BY J. J. COLE

DESIGNED BY J. J. COLE  
 DRAWN BY J. J. COLE  
 CHECKED BY J. J. COLE  
 APPROVED BY J. J. COLE

1 M. 11.15 11-11  
 VERTICAL DRAWING



**ANSTEC  
APERTURE  
CARD**

Also Available on  
Aperture Card

SQUG

SQUG

SQUG

SQUG

IC VERIFICATION  
DARY

NOTES  
1. ALL PIPES SHOWN AS SPEER LINE  
AND MAIN STEAM ISOLATION VALVES  
ARE PURCHASED BY J-2500 AND INSTALLED  
BY J-2530.

**NUCLEAR SAFETY RELATED**  
FOR USE ONLY IN THE EVENT OF A  
SIGNIFICANT RELEASE OF RADIOACTIVE MATERIAL

NO.	DATE	DESCRIPTION	STATUS
1	10-1-75	AS-BUILT	OK
2	10-1-75	AS-BUILT	OK
3	10-1-75	AS-BUILT	OK
4	10-1-75	AS-BUILT	OK

**P&ID MAIN STEAM**  
**LA BALLE COUNTY BOILER**  
**UNIT 2**  
**COMMONWEALTH ATOMIC POWER CO.**

FOR REFERENCE

REVISIONS

NO.	DATE	DESCRIPTION
1	10-1-75	AS-BUILT
2	10-1-75	AS-BUILT
3	10-1-75	AS-BUILT
4	10-1-75	AS-BUILT

M-118 SH 2

9509070287-08

EMD-067927  
 Proj. No. 09606-069  
 Rev. 2  
 Page 25

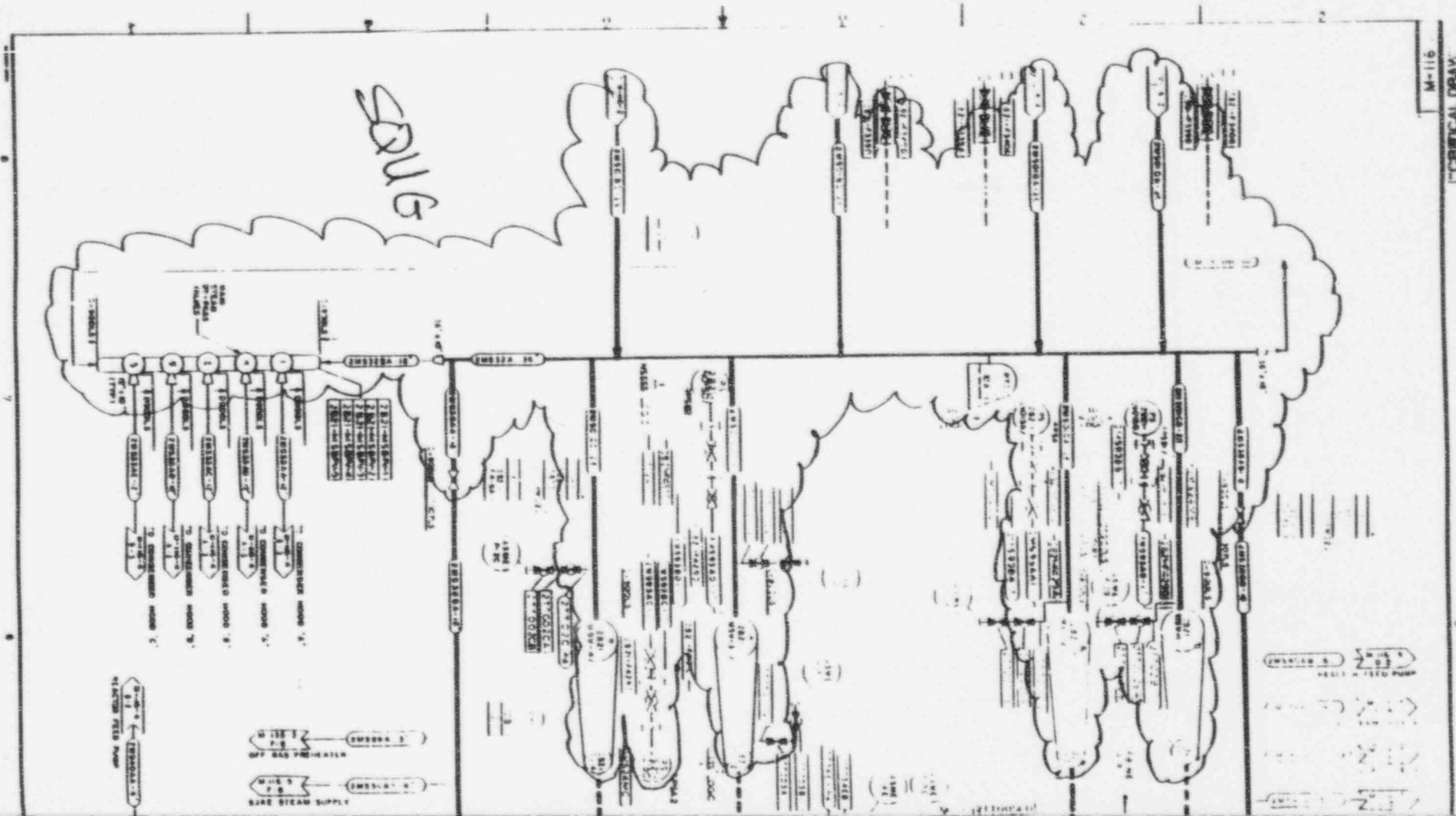
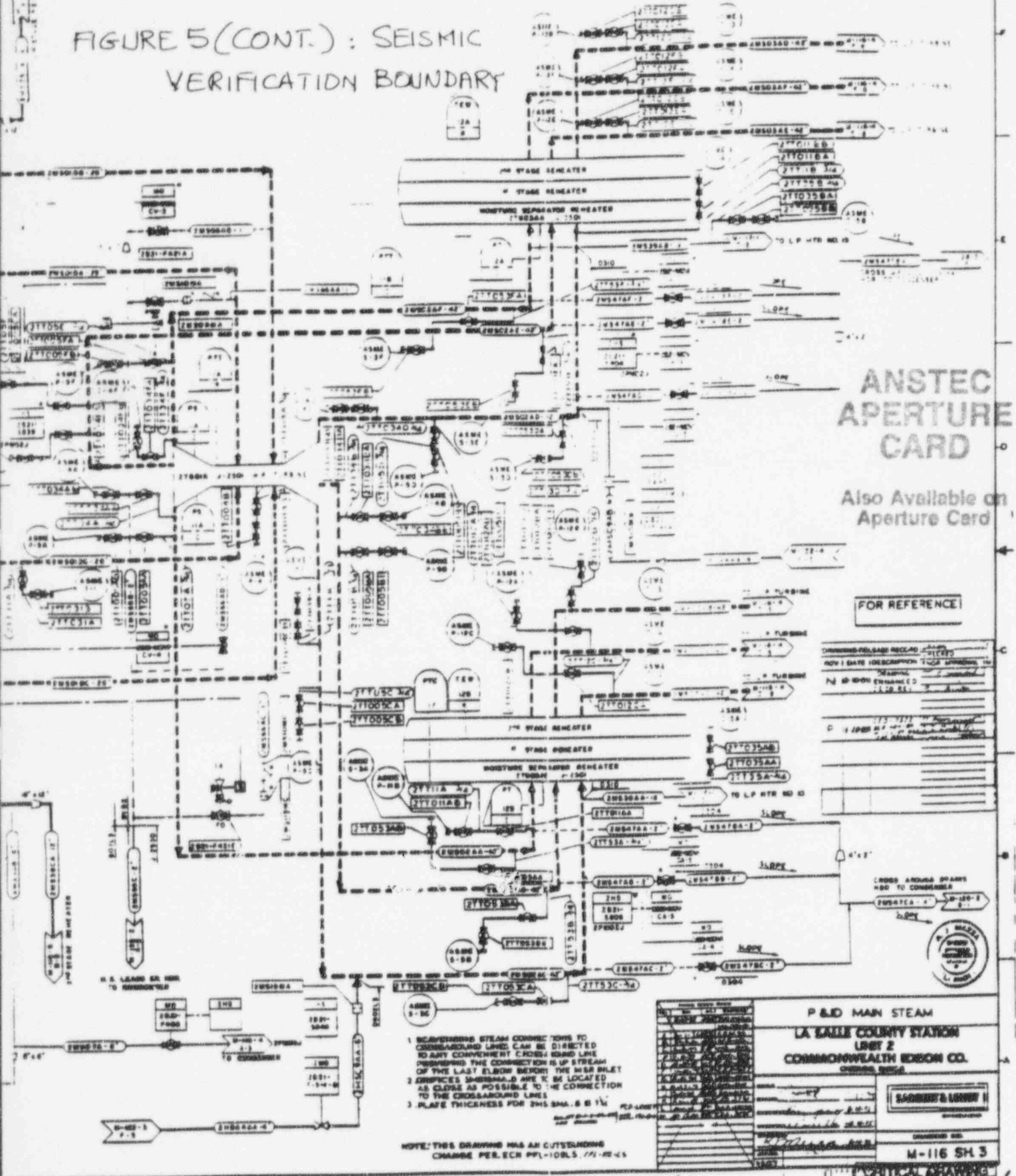


FIGURE 5 (CONT.): SEISMIC VERIFICATION BOUNDARY



**ANSTEC APERTURE CARD**  
 Also Available on Aperture Card

FOR REFERENCE

REVISION	DATE	DESCRIPTION
1	11/20/68	ISSUED FOR CONSTRUCTION
2	12/10/68	REVISED TO REFLECT CHANGES
3	01/15/69	REVISED TO REFLECT CHANGES
4	02/10/69	REVISED TO REFLECT CHANGES
5	03/10/69	REVISED TO REFLECT CHANGES
6	04/10/69	REVISED TO REFLECT CHANGES
7	05/10/69	REVISED TO REFLECT CHANGES
8	06/10/69	REVISED TO REFLECT CHANGES
9	07/10/69	REVISED TO REFLECT CHANGES
10	08/10/69	REVISED TO REFLECT CHANGES
11	09/10/69	REVISED TO REFLECT CHANGES
12	10/10/69	REVISED TO REFLECT CHANGES
13	11/10/69	REVISED TO REFLECT CHANGES
14	12/10/69	REVISED TO REFLECT CHANGES
15	01/10/70	REVISED TO REFLECT CHANGES
16	02/10/70	REVISED TO REFLECT CHANGES
17	03/10/70	REVISED TO REFLECT CHANGES
18	04/10/70	REVISED TO REFLECT CHANGES
19	05/10/70	REVISED TO REFLECT CHANGES
20	06/10/70	REVISED TO REFLECT CHANGES

1. SCISSORING STEAM CONNECTIONS TO CROSSBOUND LINES CAN BE DIRECTED TO ANY COMPONENT FROM A BOUNDARY PROVIDED THE CONNECTION IS UP STREAM OF THE LAST ELBOW BEFORE THE MSR INLET AS CLOSE AS POSSIBLE TO THE CONNECTION TO THE CROSSBOUND LINES.
  2. SPRINGS SHOWN ARE TO BE LOCATED AS CLOSE AS POSSIBLE TO THE CONNECTION TO THE CROSSBOUND LINES.
  3. PLATE THICKNESS FOR THIS SMA IS 1/2"
- NOTE: THIS DRAWING HAS AN OUTSTANDING CHANGE PER ECH PPL-108.5. 7/2/69-65

**P & ID MAIN STEAM**  
**LA SALLE COUNTY STATION**  
**UNIT 2**  
**COMMONWEALTH IRON CO.**  
 CHICAGO, ILL.

REVISIONS

NO.	DATE	DESCRIPTION
1	11/20/68	ISSUED FOR CONSTRUCTION
2	12/10/68	REVISED TO REFLECT CHANGES
3	01/15/69	REVISED TO REFLECT CHANGES
4	02/10/69	REVISED TO REFLECT CHANGES
5	03/10/69	REVISED TO REFLECT CHANGES
6	04/10/69	REVISED TO REFLECT CHANGES
7	05/10/69	REVISED TO REFLECT CHANGES
8	06/10/69	REVISED TO REFLECT CHANGES
9	07/10/69	REVISED TO REFLECT CHANGES
10	08/10/69	REVISED TO REFLECT CHANGES
11	09/10/69	REVISED TO REFLECT CHANGES
12	10/10/69	REVISED TO REFLECT CHANGES
13	11/10/69	REVISED TO REFLECT CHANGES
14	12/10/69	REVISED TO REFLECT CHANGES
15	01/10/70	REVISED TO REFLECT CHANGES
16	02/10/70	REVISED TO REFLECT CHANGES
17	03/10/70	REVISED TO REFLECT CHANGES
18	04/10/70	REVISED TO REFLECT CHANGES
19	05/10/70	REVISED TO REFLECT CHANGES
20	06/10/70	REVISED TO REFLECT CHANGES

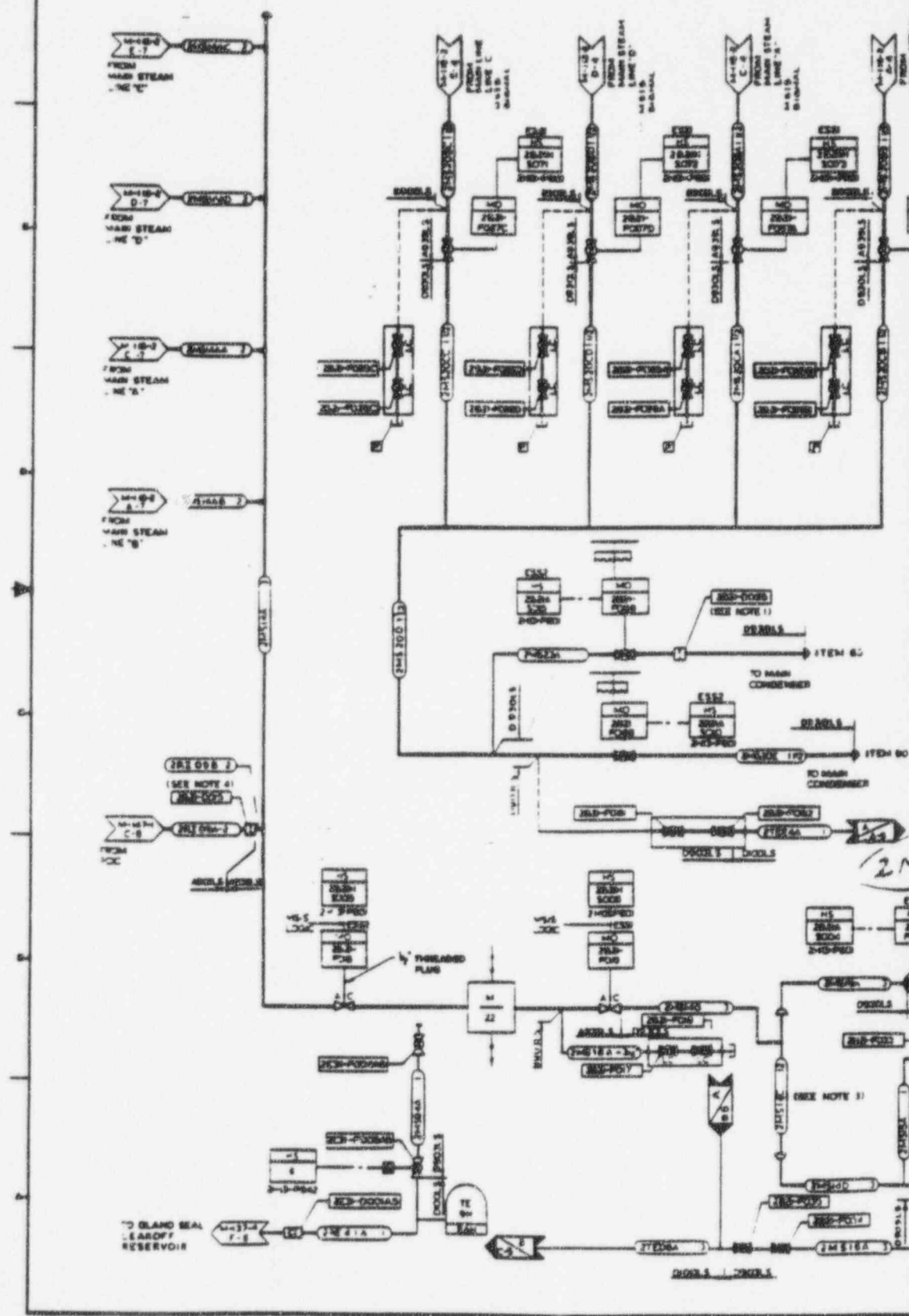
DESIGNED BY: [Signature]  
 CHECKED BY: [Signature]  
 APPROVED BY: [Signature]

M-116 SH 3

9509070287-09



FIGURE 5 (CONT.) SEISM

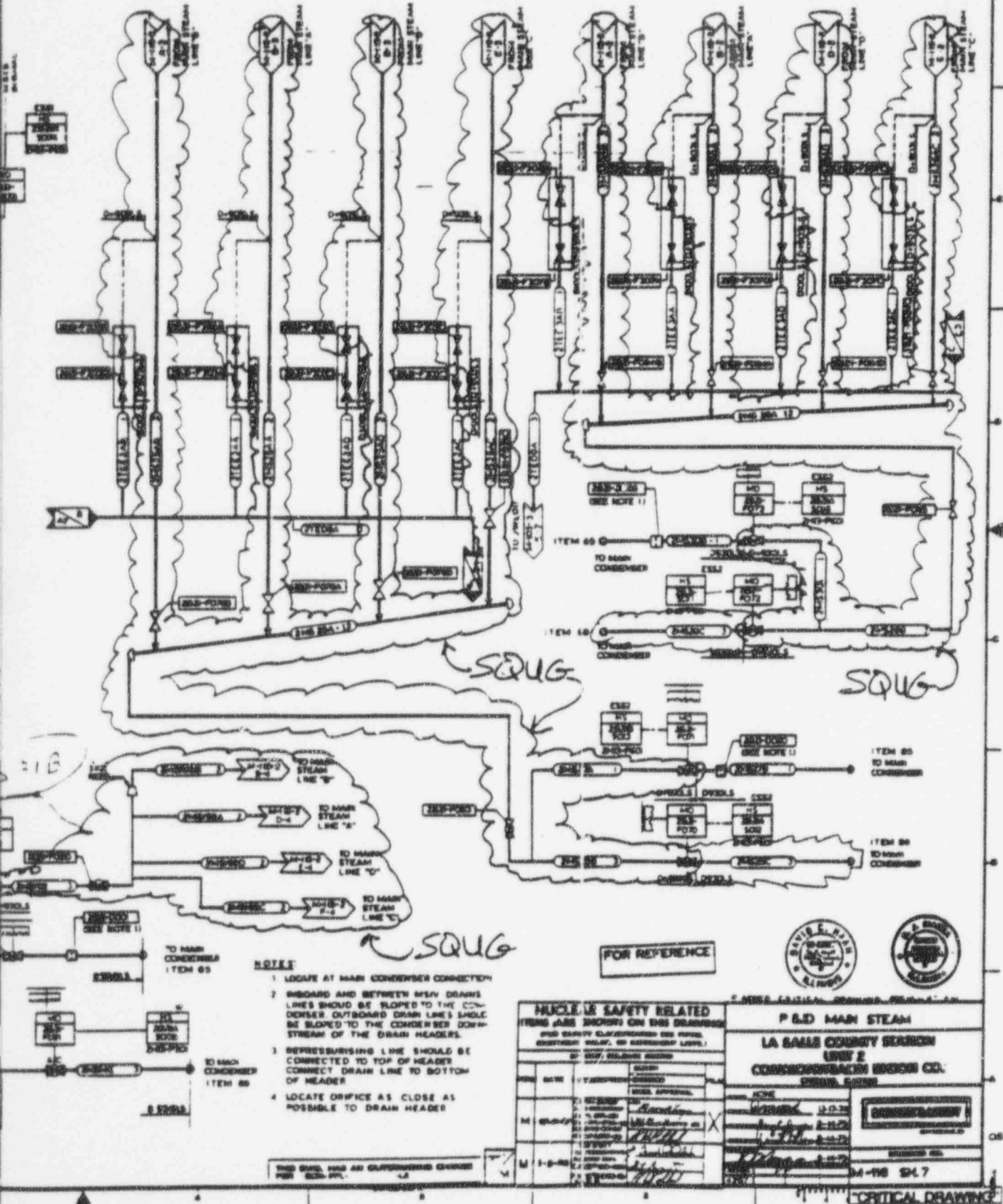


EMD-067927  
 Proj. No. 09606-069  
 Rev. 2  
 Page 26

C VERIFICATION BOUNDARY

ANSTEC  
APERTURE  
CARD

Also Available on  
Aperture Card



- NOTES**
1. LOCATE AT MAIN CONDENSER CONNECTION
  2. INBOARD AND BETWEEN MSV DRAIN LINES SHOULD BE SLOPED TO THE CONDENSER OUTBOARD DRAIN LINES SHOULD BE SLOPED TO THE CONDENSER DOWNSTREAM OF THE DRAIN HEADERS.
  3. DEPRESSURIZING LINE SHOULD BE CONNECTED TO TOP OF HEADERS CONNECT DRAIN LINE TO BOTTOM OF HEADER
  4. LOCATE ORIFICE AS CLOSE AS POSSIBLE TO DRAIN HEADER

FOR REFERENCE

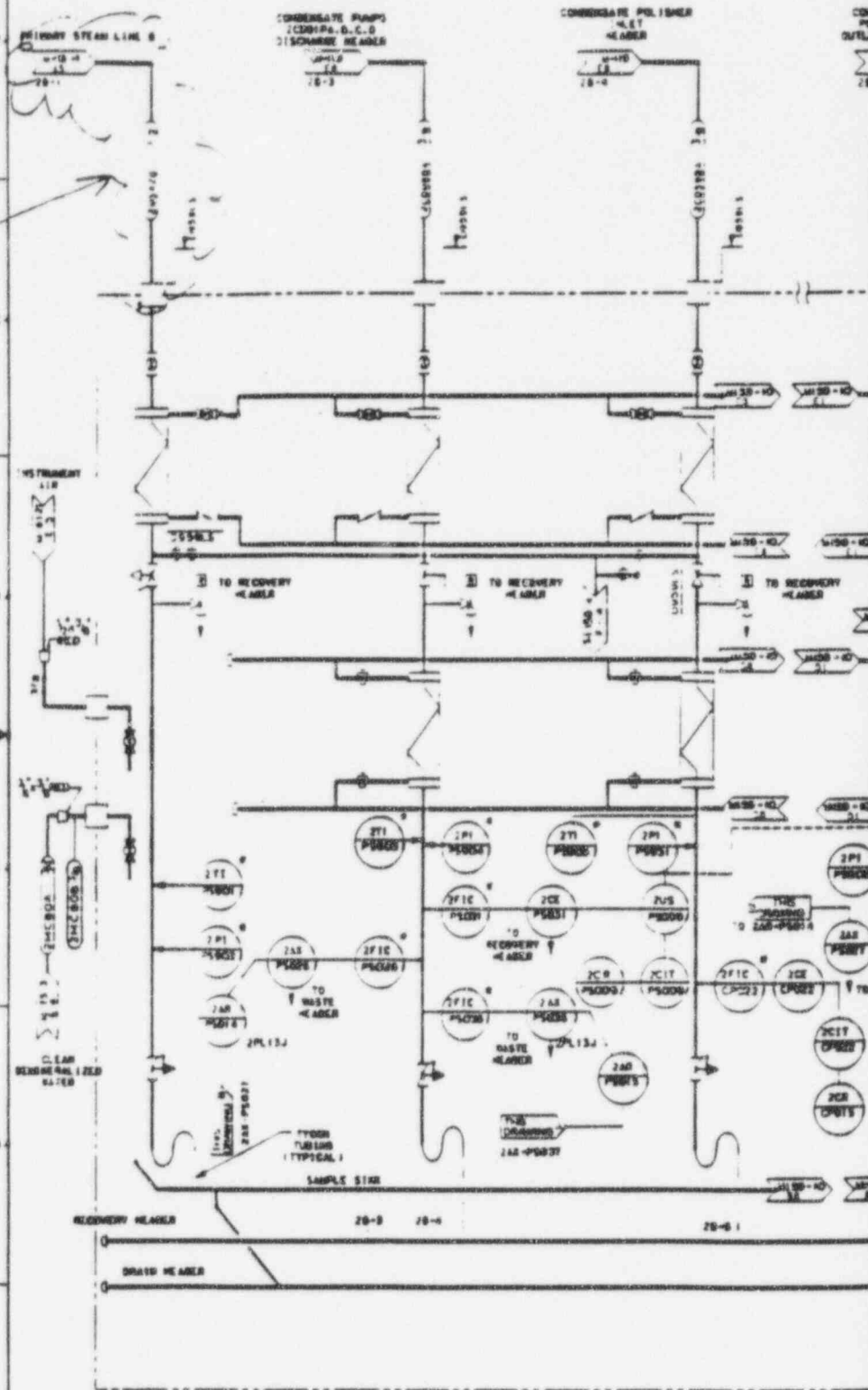


NUCLEAR SAFETY RELATED ITEMS ARE SHOWN ON DIS DRAWINGS (SEE DRAWING CLASSIFICATION ON PANEL CONTAINING THIS DRAWING FOR CLASSIFICATION)		P & ID MAIN STEAM	
LA BARR COUNTY SEASON UNIT 2 CONSTRUCTION DIVISION CO. DRAWING NUMBER		DRAWING NO.	
DATE	BY	CHECKED	REVISION
11-17-78	[Signature]	[Signature]	1
12-17-78	[Signature]	[Signature]	2
1-10-79	[Signature]	[Signature]	3
1-10-79	[Signature]	[Signature]	4
1-10-79	[Signature]	[Signature]	5
1-10-79	[Signature]	[Signature]	6
1-10-79	[Signature]	[Signature]	7
1-10-79	[Signature]	[Signature]	8
1-10-79	[Signature]	[Signature]	9
1-10-79	[Signature]	[Signature]	10

CRITICAL DRAWING

9509070287-10

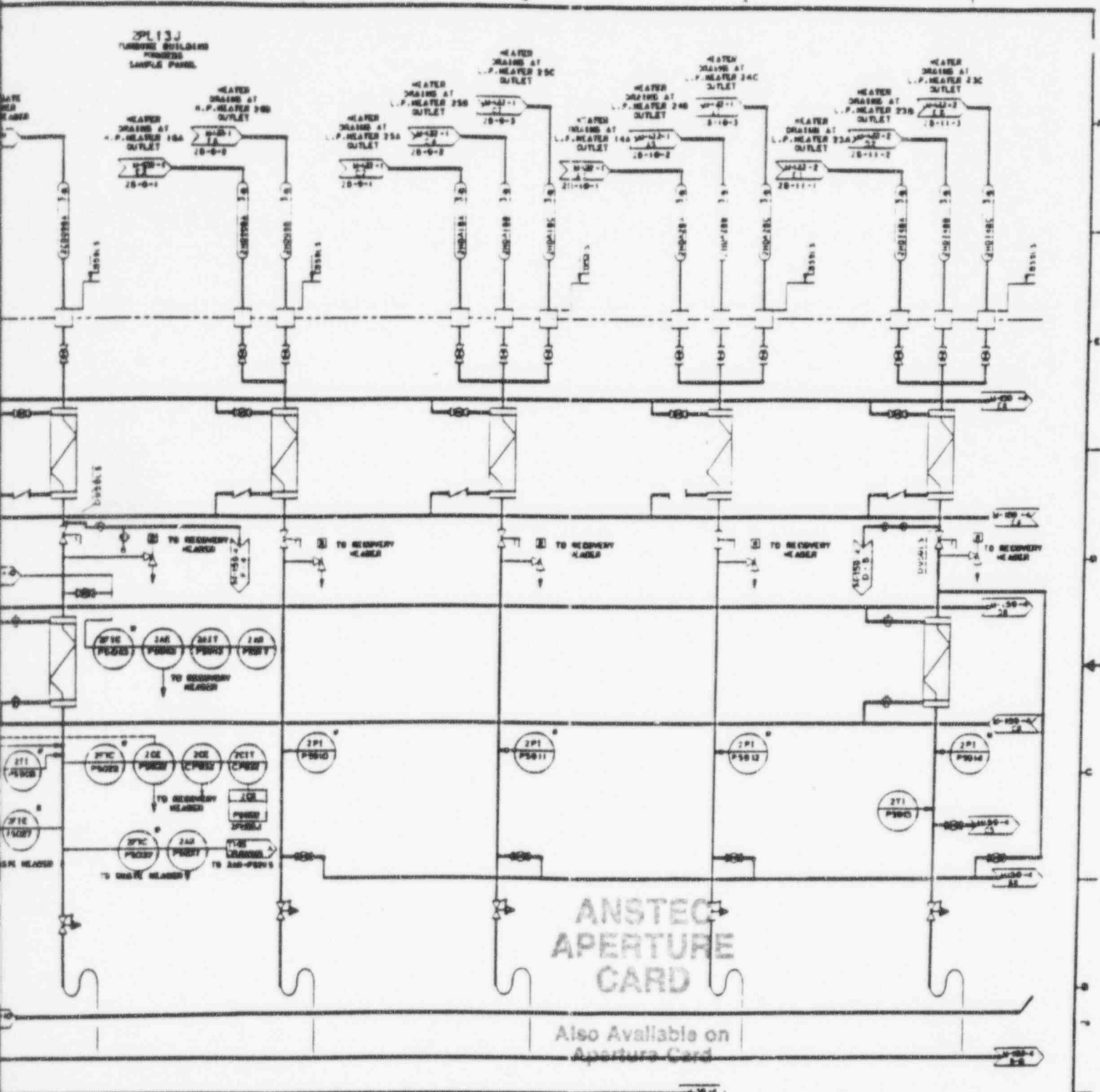
*Handwritten:* 100%



EMD-067927  
 Proj. No. 09606-069  
 Rev. 2  
 Page 27

FIGURE 5 (CONT.) : SEISMIC BOUNDAR

2PL13J  
TURNING OUTLINES  
PROCESS  
SAMPLE PANEL



ANSTEC  
APERTURE  
CARD

Also Available on  
Aperture Card

FOR REFERENCE

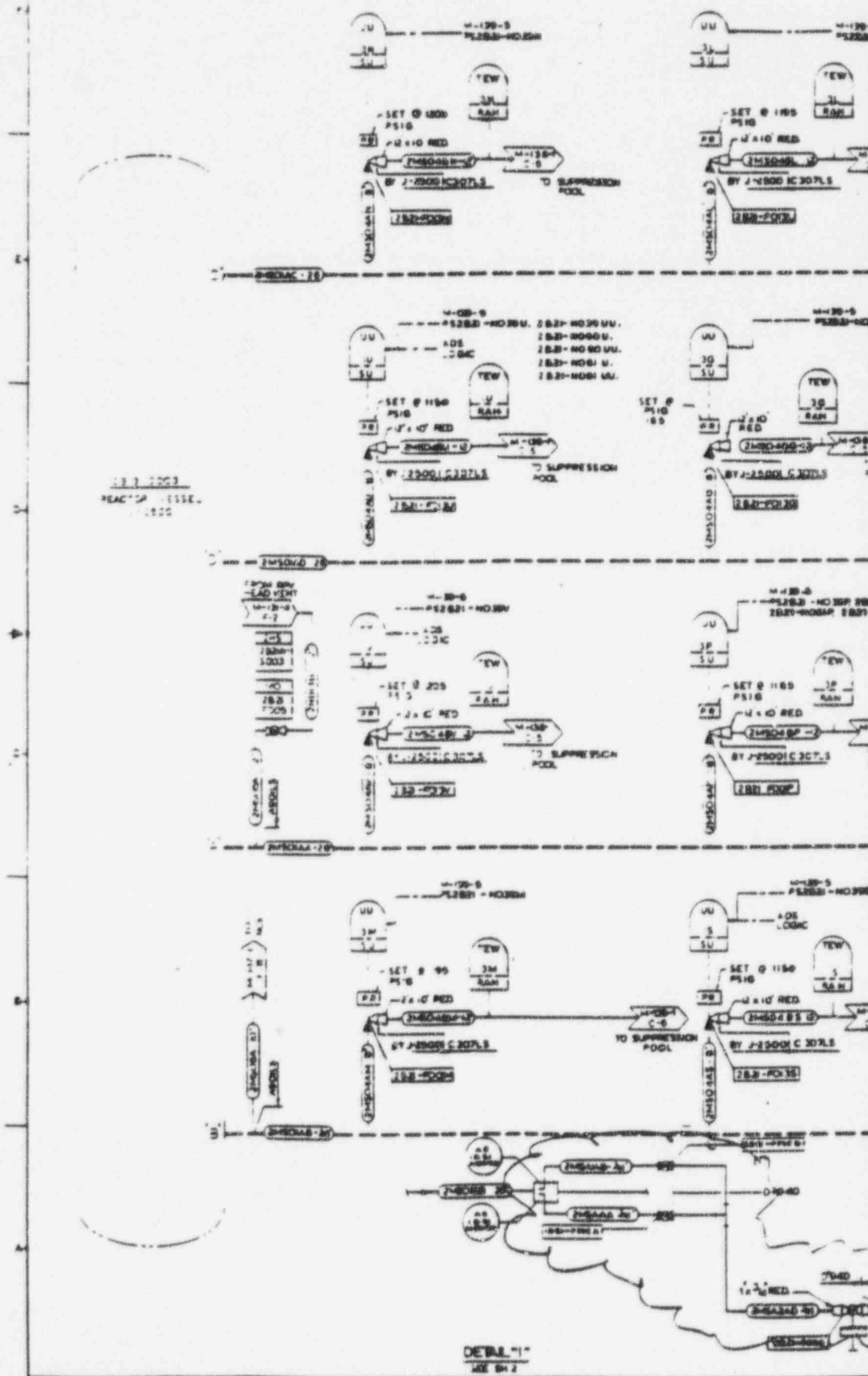
VERIFICATION  
Y

NO.	DATE	REVISION	REASON	BY
1	10-10-68	1	ISSUED FOR CONSTRUCTION	J. J. [unclear]
2	11-10-68	2	REVISION TO CORRECT ERROR	J. J. [unclear]



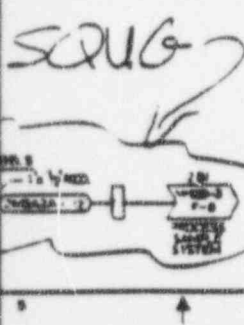
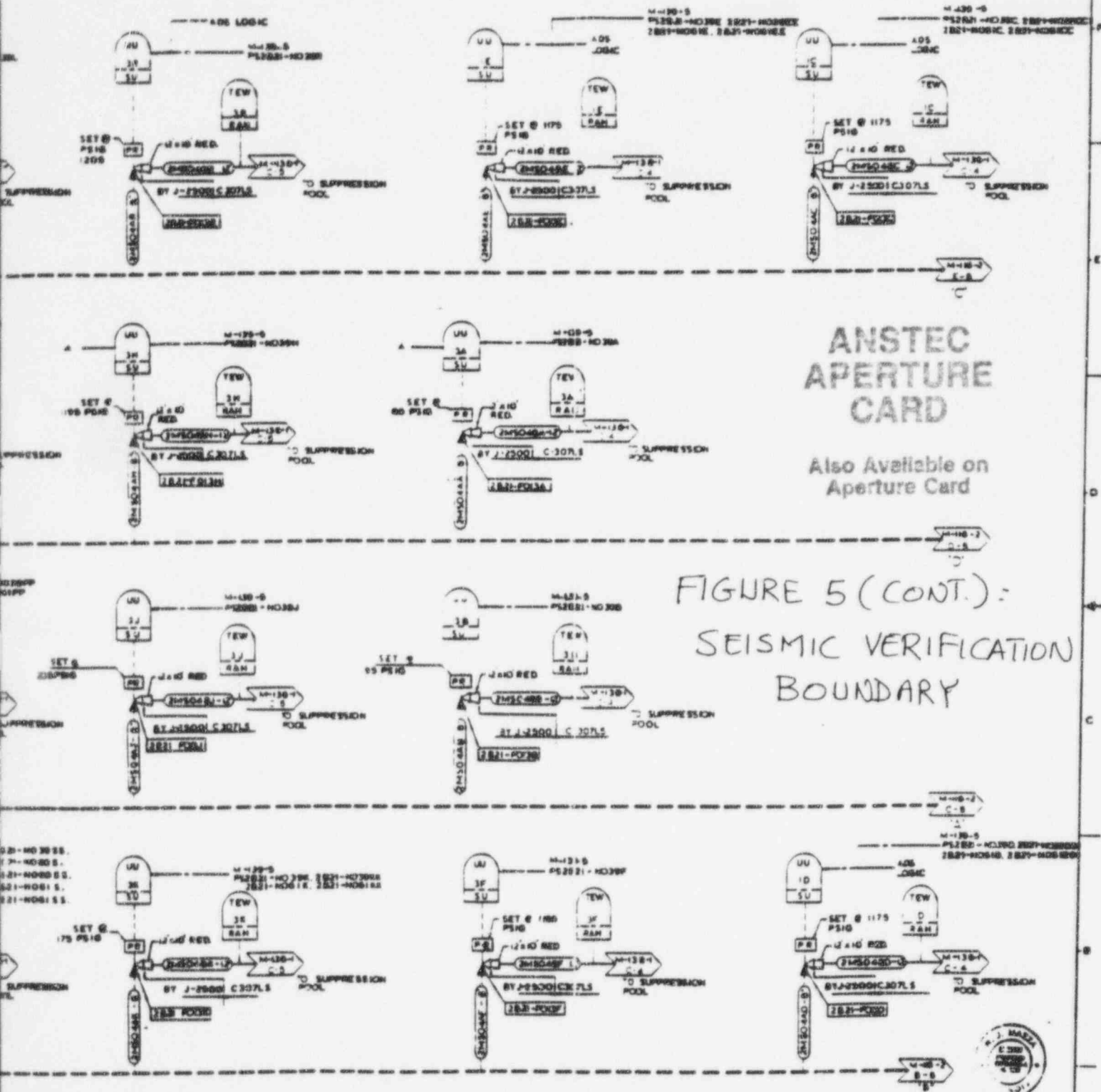
P810 PROCESS SAMPLE	
LA SALLE COUNTY STATION UNIT-2 COMMONWEALTH EDISON CO. CHICAGO ILLINOIS	
NO. 100-4-28	DATE: 11-10-68
BY: J. J. [unclear]	FOR: [unclear]
M-100 SH. 3	

9509070287-11



EMD-067927  
Proj. No. 09606-069  
Rev. 2  
Page 28/Final

DETAIL "1"  
SEE SHEET 2



NOTES:  
1. ALL PIPING SHOWN AS BROKEN LINES AND ALL SAFETY RELIEF VALVES ARE FURNISHED BY J-2530 AND INSTALLED BY J-2530.

FOR REFERENCE



NUCLEAR SAFETY RELATED		P&ID MAIN STEAM	
<p>WORDS ARE SHOWN ON THIS DRAWING FOR SAFETY CLASSIFICATION SEE PAGES. DISCREPANCY VALUE OR REVISIONS LEFTS.1</p> <p>ISSUED RELEASE ENGINEER</p>			
REV	DATE	ISSUED/REVISED	APPROVED
G	1-4-83 14:00 - 00:00	By [Signature]	[Signature]
H		By [Signature]	[Signature]
		<p>LA SALLE COUNTY STATION UNIT 2 COMMERCIAL ENERGY SERVICES CO. CHENOWETH PLANT</p>	
		<p>BARRETT &amp; LINDSEY</p>	
		<p>M-118 SH1</p>	

9509070287-12