



Donald B Miller, Jr  
Site Manager  
Midland Project

Midland Project: PO Box 1963, Midland, MI 48640 • (517) 631-8650

November 9, 1982

Mr. W. D. Shafer, Chief  
Midland Nuclear Project Section  
US Nuclear Regulatory Commission  
Region III  
799 Roosevelt Road  
Glen Ellyn, IL 60137

PRINCIPAL STAFF		
RA		
D/PA		
AREA		AUD-3
DESP		
DESPS		
DECTP		
IL		
UL	FILE	<i>km</i>

*Drawing sent to CSC (P)*

MIDLAND PROJECT GWO 7020  
REMEDIAL SOILS WORK AUTHORIZATION  
File: 0485.16 UFI: 42\*05\*22\*04, 12\*32 Serial: CSC-6418

In accordance with the NRC/CPCo Work Authorization Procedure, we are requesting approval of the following work activities:

- 102250203 Modify Beam Connections at Elev. 659
- 102250205 Modify Beam Connections at Elev. 704

To assist you in your review, we are attaching a copy of design drawing C-2106.

*DBM*  
D. B. Miller  
Site Manager

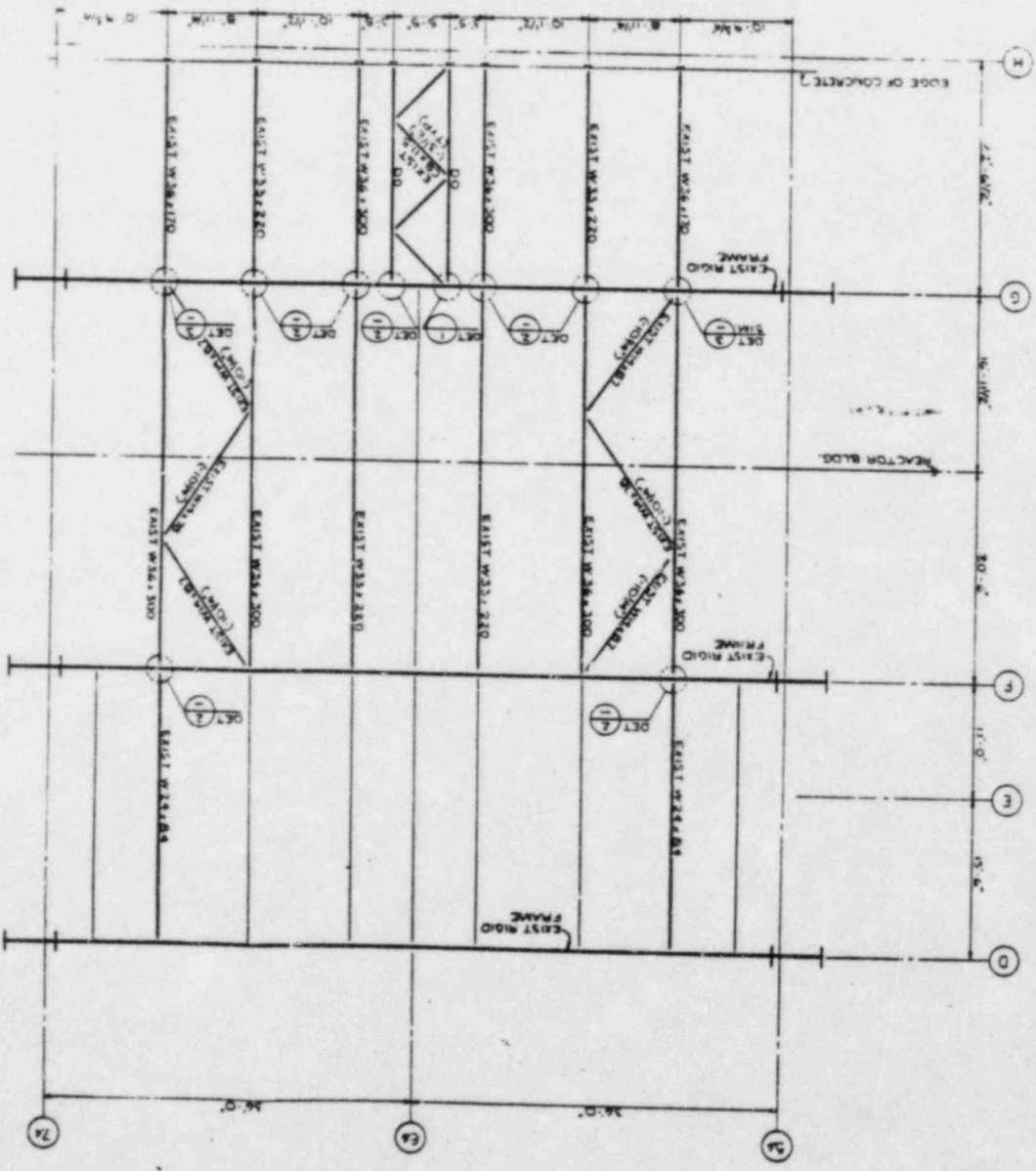
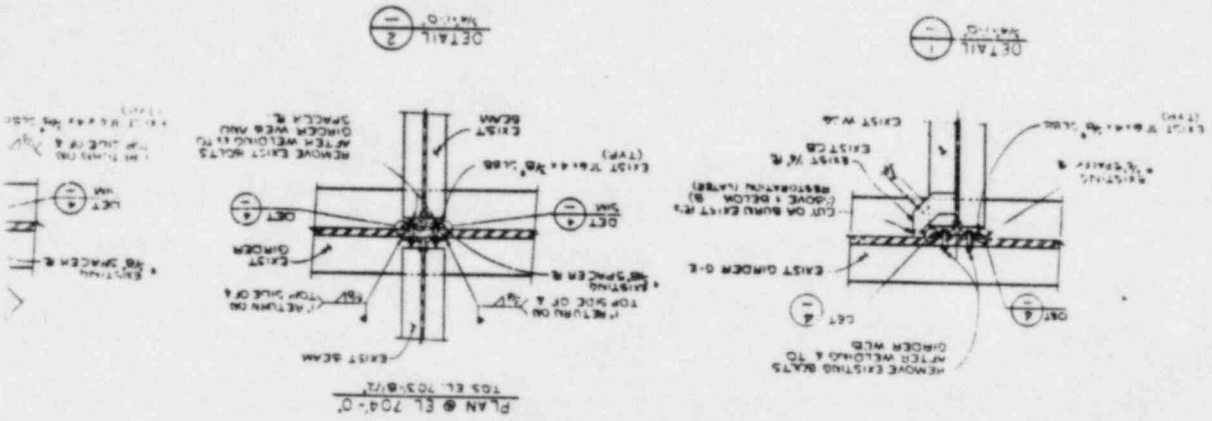
DBM/BHP/RM/R/GBJ/dmw

Attachment

Response Required: No

8406050130 840517  
PDR FOIA  
RICE84-96  
PDR

NOV 15 1982



PLAN @ EL. 704.0  
TOP EL. 703.8/2

The drawings and the design are shown on the property of the client. They are issued based on the information supplied and the contractor is responsible for any errors or omissions. The contractor shall be responsible for any errors or omissions. The contractor shall be responsible for any errors or omissions.

