



Department of Energy  
Washington, D.C. 20545

Docket No. 50-537  
HQ:S:83:265

OCT 24 1983

Dr. J. Nelson Grace, Director  
CRBR Program Office  
Office of Nuclear Reactor Regulation  
U.S. Nuclear Regulatory Commission  
Washington, D.C. 20555

Dear Dr. Grace:

MEETING SUMMARY FOR THE CLINCH RIVER BREEDER REACTOR PLANT PROBABILISTIC  
RISK ASSESSMENT (PRA) PROGRAM

On October 4, 1983, Project Office (PO) representatives met with the Nuclear Regulatory Commission (NRC) to review the management of the PRA program. During the course of the meeting the following agreements were reached.

- (1) The PO will formally submit the PRA subtask reports for NRC review. The subject reports will have had a project-wide review with resolution/incorporation of all project comments prior to submittal to NRC.
- (2) The NRC will review the subject reports and provide the project with comments on the effectiveness of communications exhibited by the reports.

Enclosure 1 is a copy of the viewgraphs provided during the meeting. A PRA Review Distribution list is provided (enclosure 2) as suggested by NRC. The list of meeting attendees is also provided as enclosure 3.

If there are any questions, please call P. J. Gross of the Project Office (FTS 626-6005).

Sincerely,

Francis X. Gavigan  
Director, Office of Breeder  
Demonstration Projects  
Office of Nuclear Energy

3 Enclosures

cc: Service List  
Standard Distribution  
Licensing Distribution

8310310059 831024  
PDR ADOCK 05000537  
A PDR

Wool  
1/41

ENCLOSURE I

Viewgraphs from the PRA Management Meeting

on October 4, 1983

---

---

**CLINCH RIVER BREEDER  
REACTOR PLANT PROJECT**

**BRIEFING TO:**

**NUCLEAR REGULATORY COMMISSION**

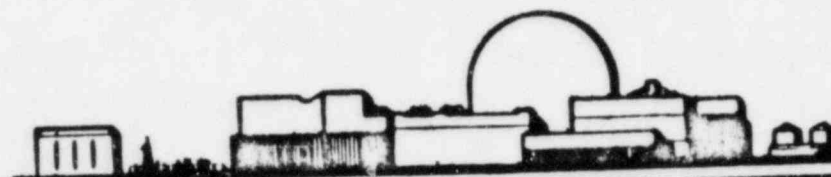
**ON:**

**PRA STATUS**

**PRESENTED BY:**

**P. J. GROSS  
ASSISTANT DIRECTOR,  
PUBLIC SAFETY  
CRBRP PROJECT OFFICE  
OAK RIDGE, TN.**

**OCTOBER 4, 1983**



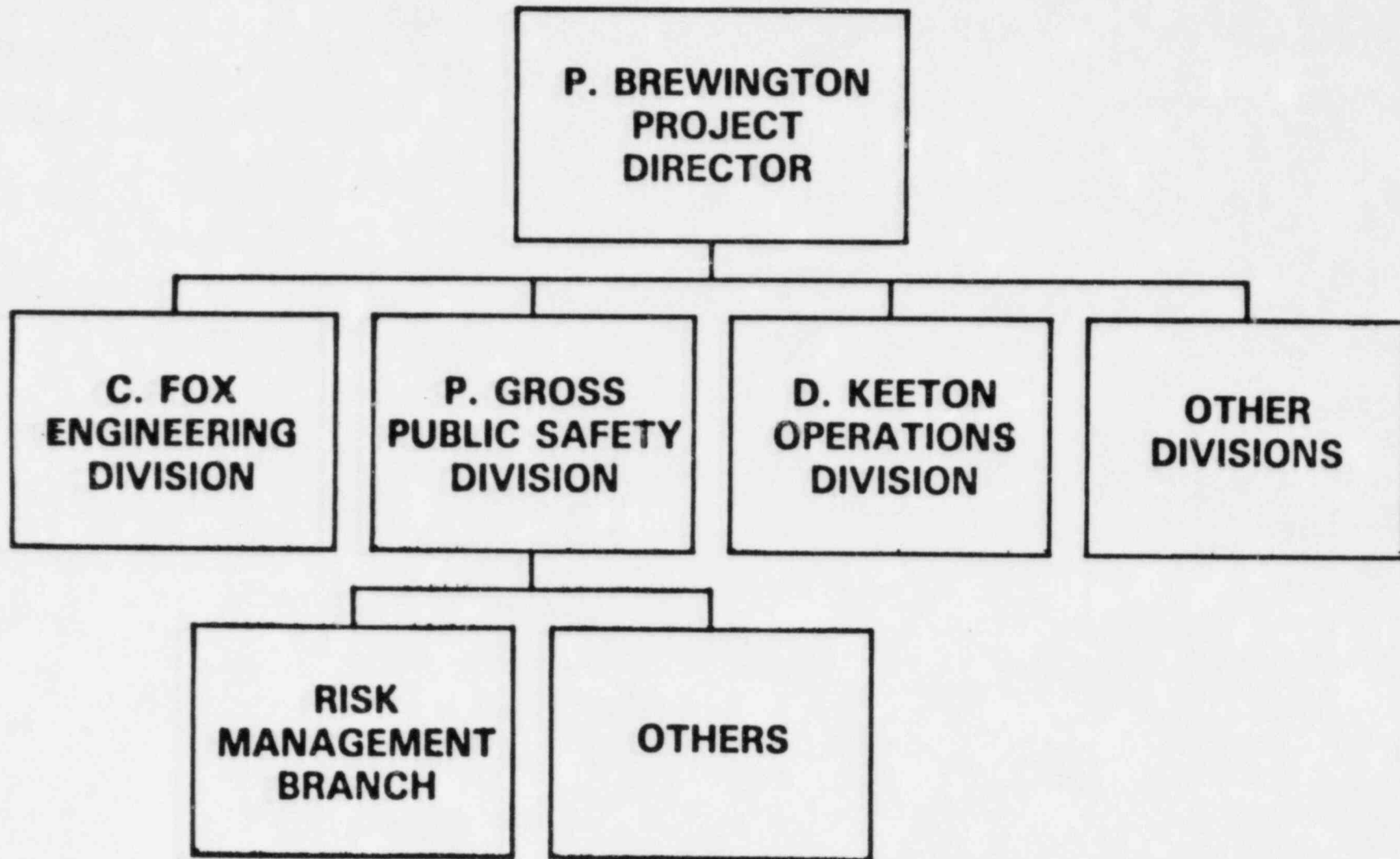
# AGENDA

- PROGRAM GOALS
- RESPONSIBILITIES OF PARTICIPANTS
- RELIABILITY OF PRODUCTS
- REVIEW CYCLE AND SCHEDULE

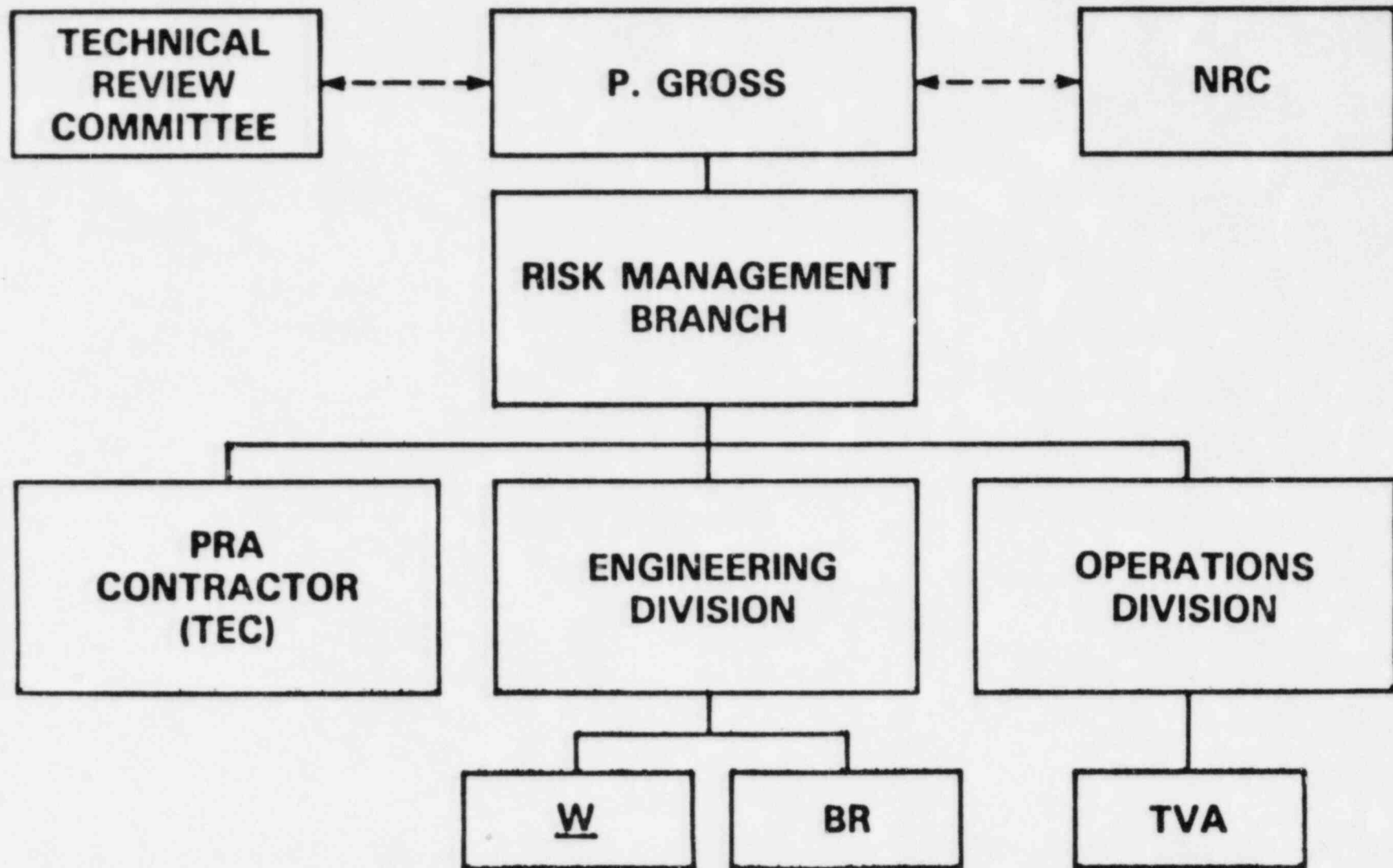
# **GOALS OF PRA PROGRAM**

- **ENHANCE SAFE DESIGN AND OPERATION OF THE PLANT**
- **IMPROVE UNDERSTANDING OF PLANT BEHAVIOR UNDER DEGRADED CONDITIONS**
- **IMPROVE OPERATOR'S ABILITY TO MANAGE ACCIDENTS**
- **ASSESS SAFETY SIGNIFICANCE OF DESIGN ALTERNATIVES**
- **ENHANCE EMERGENCY PLANNING EFFECTIVENESS**
- **ASSIST IN PREPARATION OF LCOs, TEST INTERVALS, AND TECH SPECs**
- **CHECK DESIGN BASIS ACCIDENT SELECTION**
- **CHARACTERIZE RELATIVE RISK**

# PROJECT OFFICE ORGANIZATIONAL CHART



# PRA PROGRAMMATIC RESPONSIBILITIES



# **TECHNICAL REVIEW COMMITTEE (TRC)**

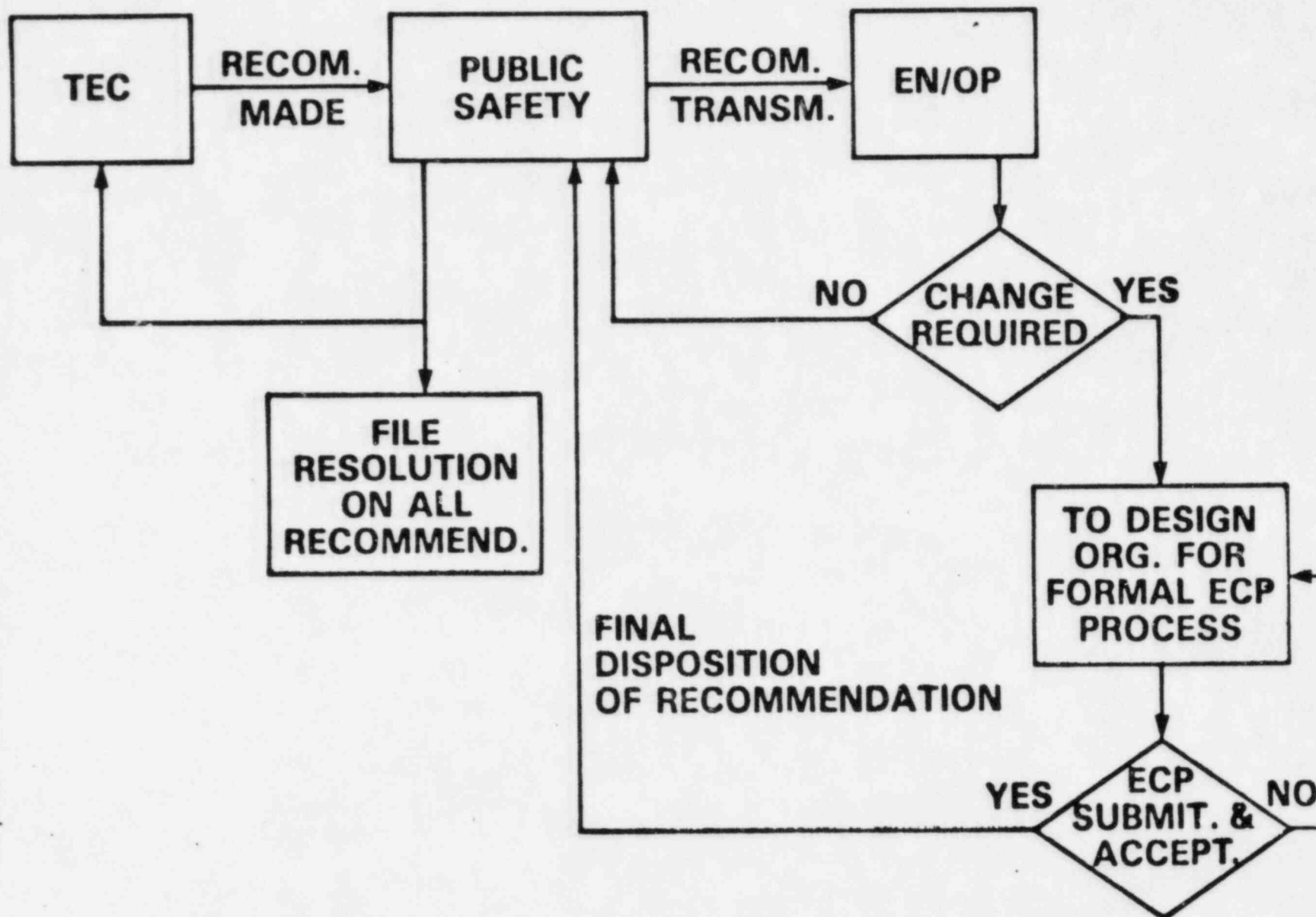
- **PROVIDES PROGRAMMATIC RECOMMENDATIONS**
- **REVIEWS METHODOLOGY AND BASIC TECHNICAL APPROACH**
- **REVIEWS OVERALL MODEL AND SPECIFIC PRODUCTS**
- **REVIEWS EFFECTIVENESS OF TECHNOLOGY TRANSFER**
- **REVIEWS EFFECTIVENESS OF FEEDBACK TO DESIGN**



# **TECHNICAL REVIEW COMMITTEE COMPOSED OF**

- **PROJECT OFFICE PERSONNEL (PUBLIC SAFETY, ENGINEERING)**
- **DESIGN ORGANIZATIONS**
- **INDEPENDENT PRA CONSULTANTS**
- **TVA PERSONNEL**

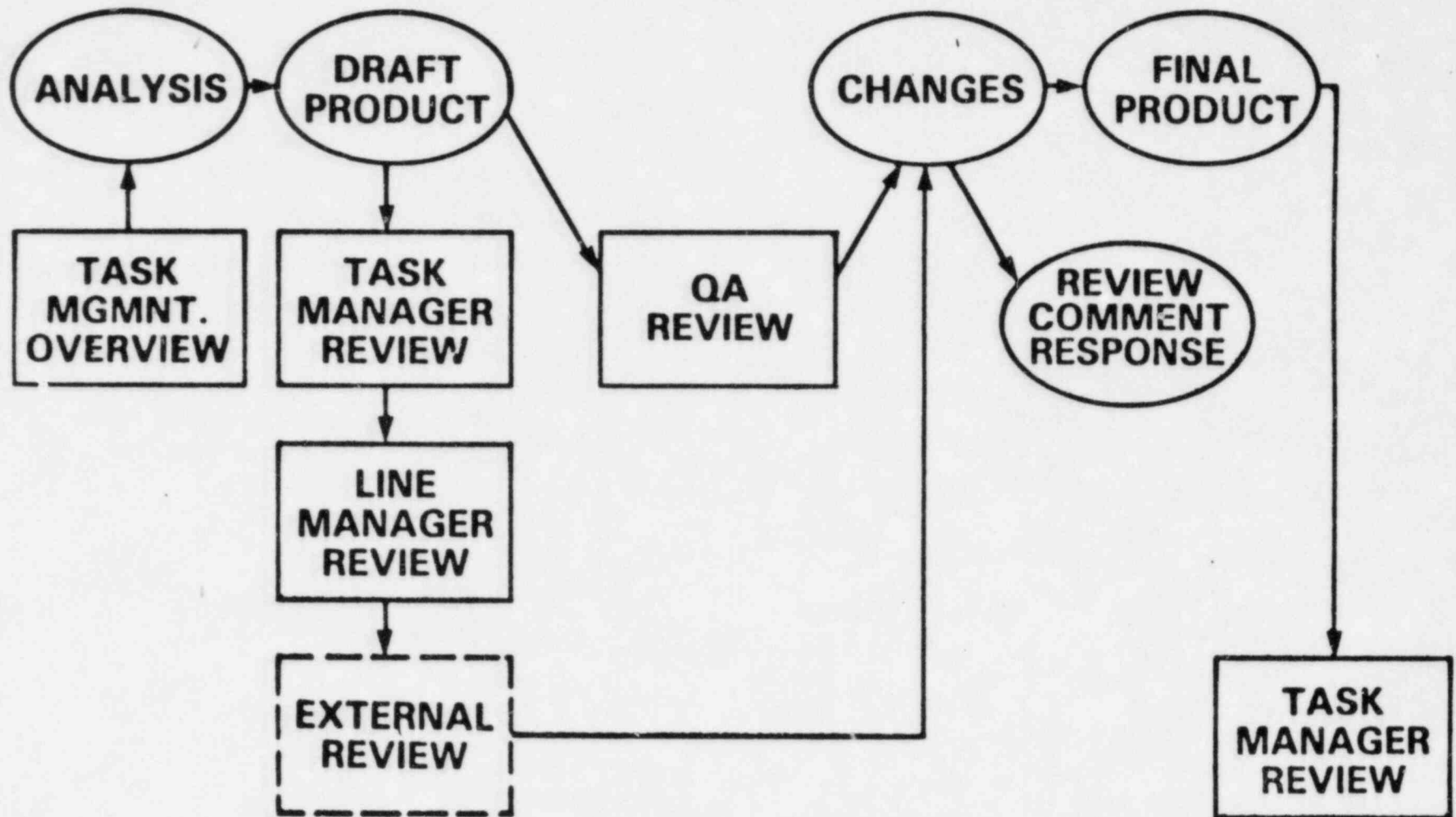
# FLOW CHART FOR FEEDBACK TO DESIGN



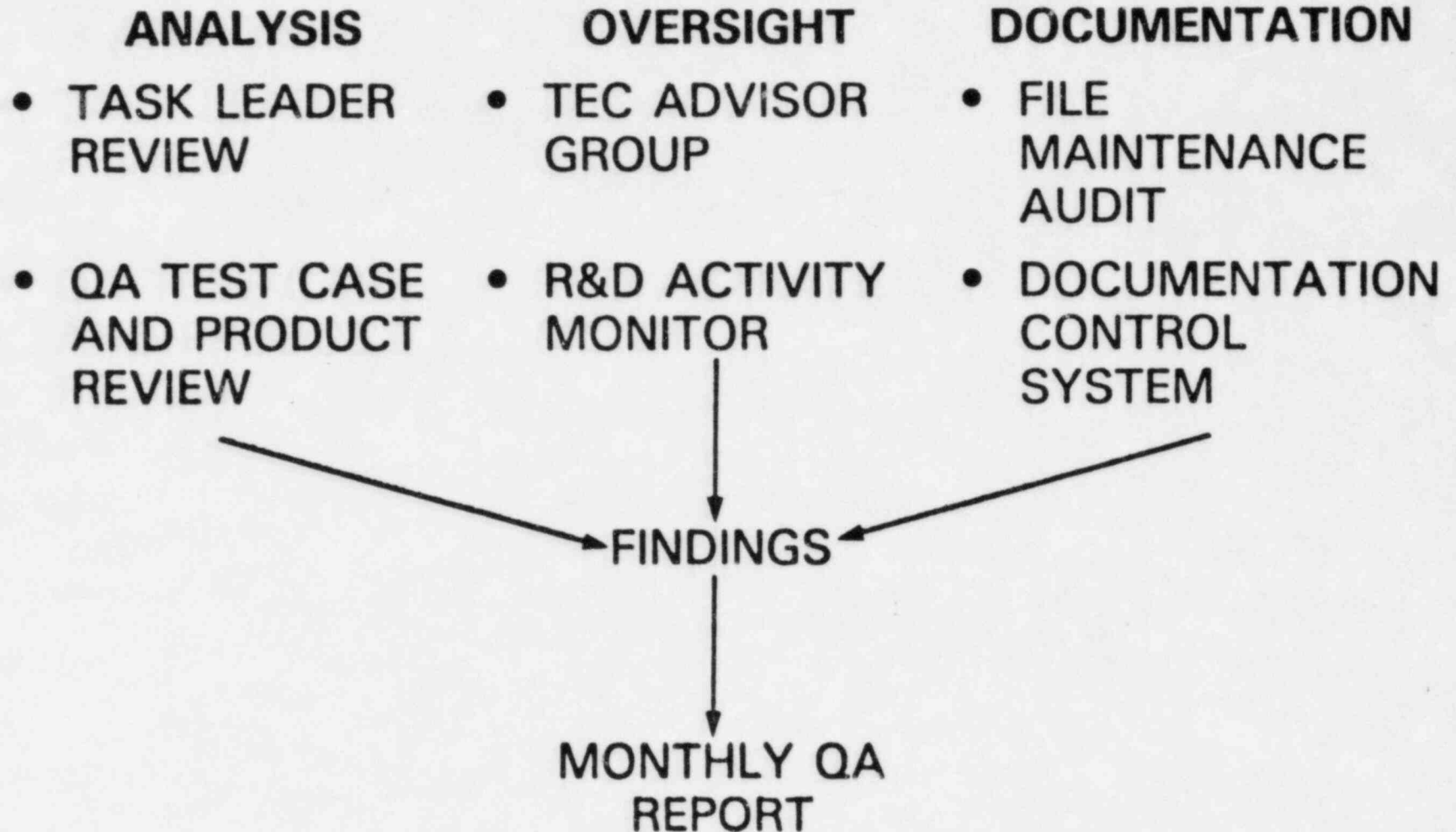
## **RELIABILITY ASSURED BY**

- **INTERNAL TEC REVIEW CYCLE  
AND QA PROGRAM**
- **PROJECT REVIEW CYCLE  
(PO, DESIGNERS)**
- **TECHNICAL REVIEW COMMITTEE  
SCRUTINY**
- **PRA/SIA REVIEW AND EXCHANGE**
- **NRC REVIEW CYCLE**

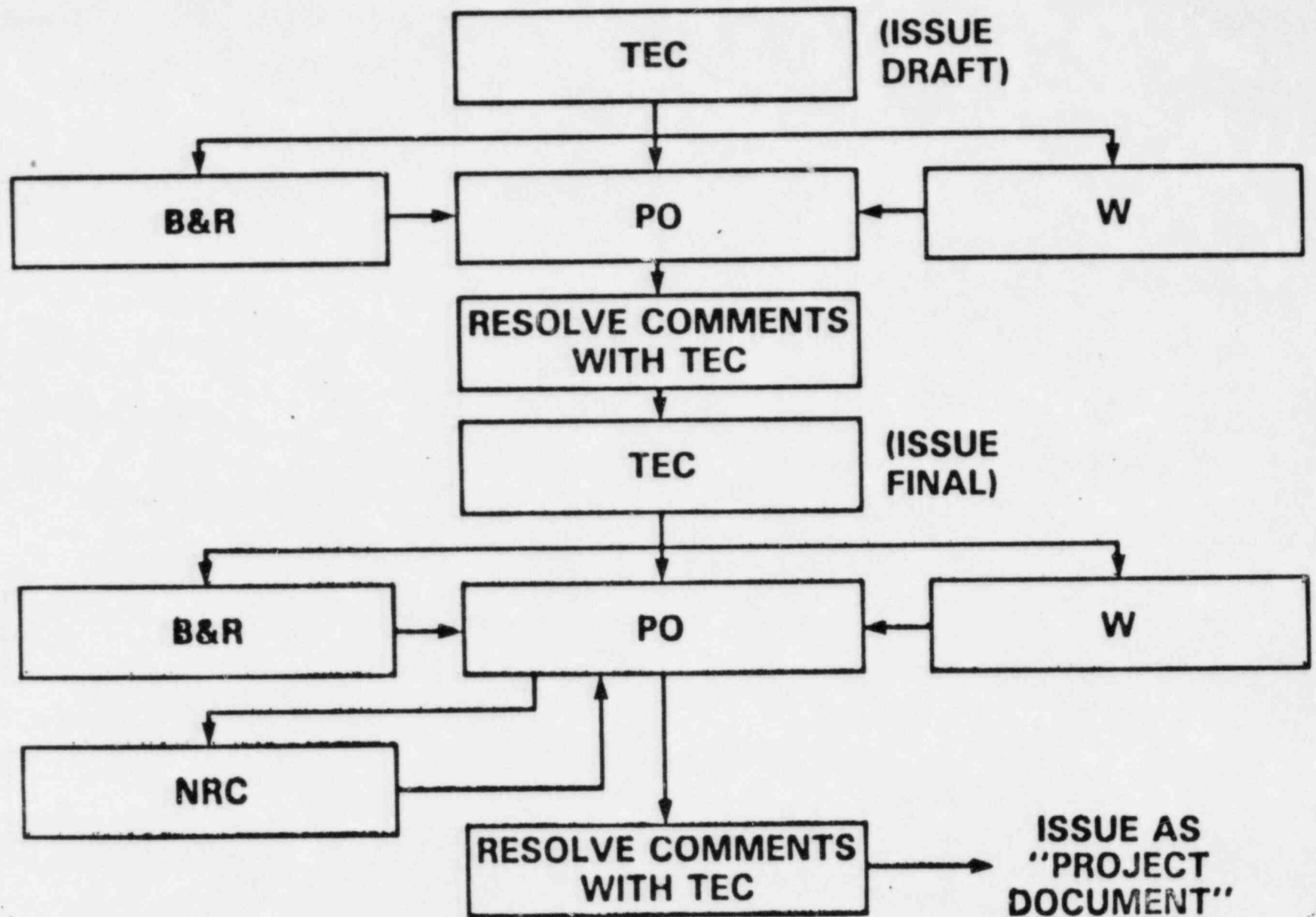
# OVERVIEW OF TEC REVIEW CYCLE



# TEC QA ACTIVITIES



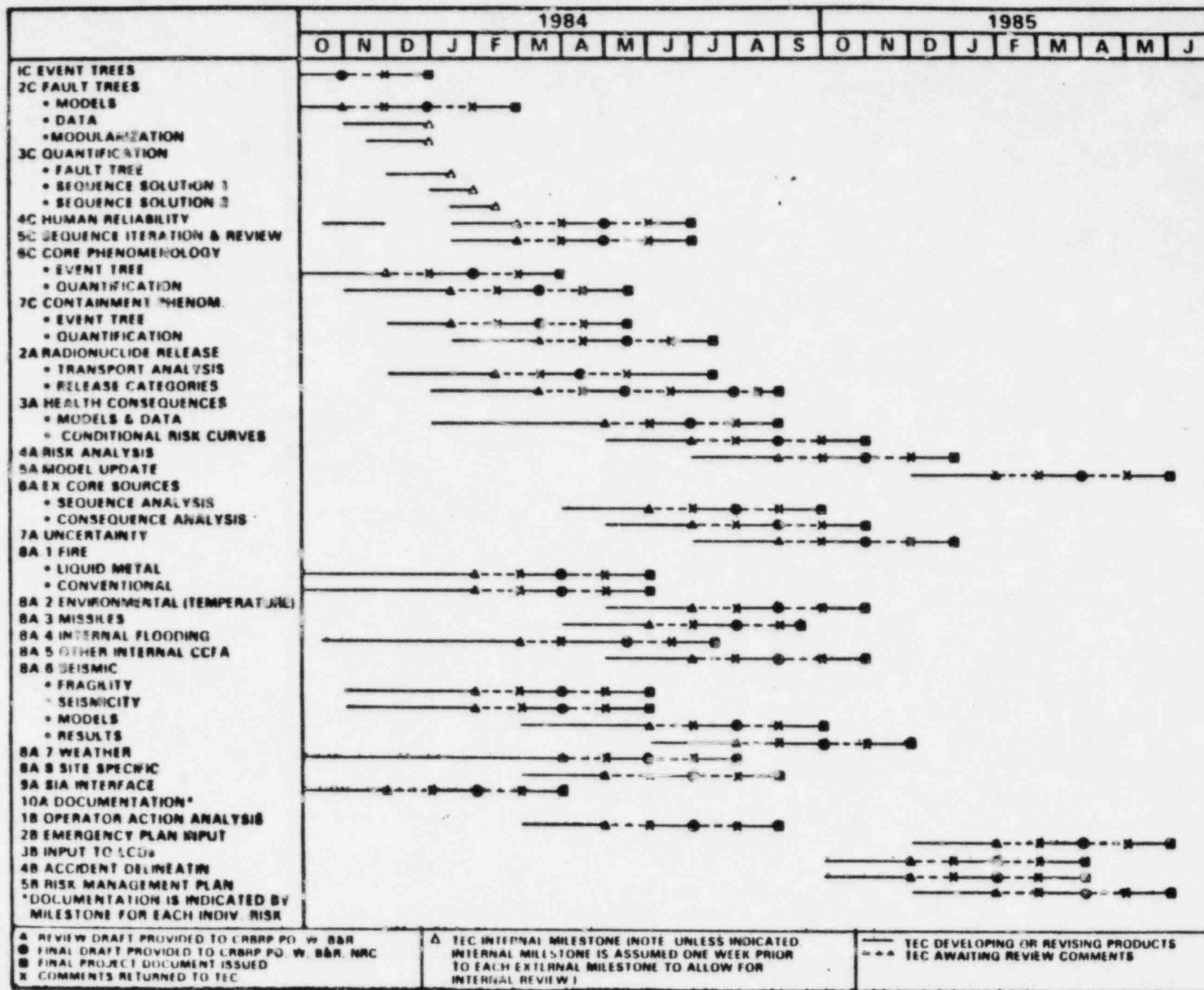
# PROJECT REVIEW OF PRA PRODUCTS



# PROJECT REVIEW CYCLE

- BEGINNING OF TASK—REVIEW PLANS AND APPROACHES
  - ASSURES AGREEMENT ON APPROACH AT FRONT END
  - HELPS IDENTIFY INFORMATION REQUIREMENTS
- REVIEW TEC DESIGN UNDERSTANDING BEFORE ANALYSIS
  - ASSURES CORRECT UNDERSTANDING
  - ASSURES CORRECT ASSUMPTIONS
  - MINIMIZES REWORK
- REVIEW OF DRAFT PRODUCT
  - APPROPRIATE DESIGN ORGANIZATIONS
  - ASSURES TECHNICAL ACCURACY







# **SUGGESTED NRC MEETING DATES**

- **EARLY NOVEMBER, 1983**
- **MID JANUARY, 1984**
- **EARLY APRIL, 1984**
- **MID JULY, 1984**
- **EARLY OCTOBER, 1984**
- **EARLY JANUARY, 1985**
- **EARLY APRIL, 1985**
- **EARLY JULY, 1985**

ENCLOSURE II

PRA REVIEW DISTRIBUTION LIST

Dr. J. Nelson Grace, NRC (6)

A. Spano, NRC (1)

P. Boehnert, ACRS (1)

E. Rumble, SAI (2)

R. Liner, SAI (1)

ENCLOSURE III

MEETING ATTENDEES  
PRA MANAGEMENT MEETING  
October 4, 1983

S. Asselin  
P. Gross  
F. Gavigan  
R. Emmett  
A. Spano  
T. King  
J. Swift  
N. Grace  
R. Stark  
R. Rothman  
L. Peiter  
L. N. Ribb  
H. Holz  
S. Additon  
G. Sherwood  
P. Boehnert

TEC  
CRBRP-PO  
DOE, HQ  
CRBRP-PO  
NRC-RRAB  
NRC-CRBRPO  
NRC-CRBRPO  
NRC-CRBRPO  
NRC-CRBRPO  
NRC GSB  
NRC GSB  
LNR Assoc.  
NRC-CRBRPO  
W-Bethesda  
DOE, HQ  
ACRS Staff