

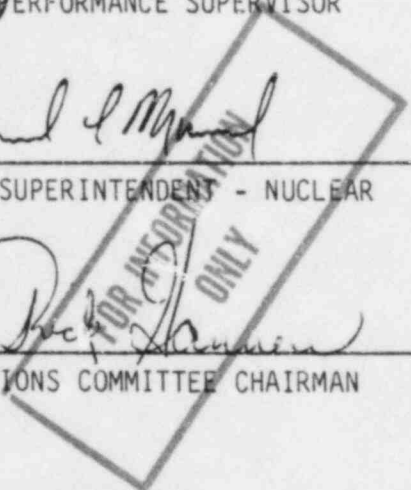
DUANE ARNOLD ENERGY CENTER
 INSERVICE TESTING PROGRAM

APPROVED BY: James Rushkate 12-20-83
 PLANT PERFORMANCE SUPERVISOR DATE

APPROVED BY: David L. Marshall 12-20-83
 PLANT SUPERINTENDENT - NUCLEAR DATE

REVIEWED BY: Richie Hammin 12-20-83
 OPERATIONS COMMITTEE CHAIRMAN DATE

REVIEWED BY: Keith Young for 12-20-83
 ALARA COORDINATOR DATE



Effective Date: 12/23/83

List of Effective Pages

TITLE: Duane Arnold Energy Center
 Inservice Testing Program

Page Number	Revision	Date
1 - 66	5	12-23-83
Appendix A 1 - 3	5	12-23-83
Appendix B 1 - 67	5	12-23-83
Appendix C 1	5	12-23-83

Iowa Electric Light and Power Company
Duane Arnold Energy Center
(Docket No. 50-331)

ASME INSERVICE TESTING PROGRAM

FOR

PUMPS AND VALVES

RECORD OF REVISIONS

<u>REVISION</u>	<u>DATE</u>
Original	March 1, 1978
Rev. 1	October, 1978
Rev. 2	May 1, 1980
Rev. 3	November 1, 1980
Rev. 4	January 1, 1983
Rev. 5	December 23, 1983

TABLE OF CONTENTS

	<u>Page</u>
Title Page	1
List of Effective Pages	2
Record of Revisions	3
Table of Contents	4
List of Tables	5
List of Figures	6
1.0 INTRODUCTION	7
2.0 TESTING PROGRAM FOR PUMPS	8
2.1 General Information	8
2.1.1 Applicable Code	8
2.1.2 Pump Program Tables	8
2.1.3 Measurement of Test Quantities	9
2.1.4 Allowable Ranges of Test Quantities	9
2.1.5 Bearing Lubricant	9
2.1.6 Instrument Accuracy	9
2.1.7 Exempted Pumps	9
2.2 Relief Requests for Pump Testing Program	10
3.0 TESTING PROGRAM FOR VALVES	23
3.1 General Information	23
3.2 Relief Requests for Valve Testing Program	29
Appendix A - Pump Testing Program	
Appendix B - Valve Testing Program	

LIST OF TABLES

<u>Table</u>	<u>Title</u>	<u>Page</u>
PR-8.1	Allowable Ranges of Vibration Velocity Quantities	20
3.1-1	Inservice Valve Test	26
3.1-2	Test Frequency	28

LIST OF FIGURES

<u>Figure</u>	<u>Title</u>	<u>Page</u>
PR-5.1	Alternate Testing Approach for Determination of Hydraulic Change	16

DUANE ARNOLD ENERGY CENTER	Page 7 of 66
TITLE: INSERVICE TESTING PROGRAM	Date 12-23-83 Rev. 5

1.0 INTRODUCTION

Revision 5 of the Duane Arnold Energy Center (Unit 1) ASME Inservice Testing Program for Pumps and Valves will be in effect through February 1, 1985, the end of the first 120-month (10-year) inspection interval. The program will be updated prior to the start of the second inspection interval in accordance with the requirements of 10CFR 50.55a(g).

This document outlines the inservice testing (IST) program for Duane Arnold Energy Center, based on the requirements of Section XI of the ASME Boiler & Pressure Vessel Code, 1980 Edition through the Winter 1980 Addenda. All references to IWP or IWV in this document correspond to Subsections IWP or IWV, respectively, of ASME Section XI, 1980 Edition through the Winter 1980 Addenda unless otherwise noted.

The inservice inspection (ISI) classification boundaries for the Duane Arnold Energy Center are identical to the design classification or quality group boundaries shown on the plant piping and instrument diagrams (P&IDs). This IST program was developed using the ISI classification boundaries and the following documents:

- Title 10, Code of Federal Regulations, Part 50, paragraph 50.55a(g)
- NRC Regulatory Guides Division 1
- Standard Review Plan 3.9.6, "Inservice Testing of Pumps and Valves"
- Division 1 (Draft) Regulatory Guide and Value/Impact Statement, "Identification of Valves for Inclusion in Inservice Test Programs"
- "NRC Staff Guidance for Preparing Pump and Valve Testing Programs and Associated Relief Request," January 1978
- Final Safety Analysis Report, Duane Arnold Energy Center
- Technical Specifications, Duane Arnold Energy Center

The inservice tests identified in this program will verify the operational readiness of pumps and valves whose functions are required to mitigate the consequences of an accident or to bring the reactor to a cold shutdown condition. The ISI classification of each pump and valve matches the ISI classification indicated on the P&IDs excepting those pumps and valves in the IST boundaries that are identified as non-classed (NC).

FOR INFORMATION
ONLY

2.0 TESTING PROGRAM FOR PUMPS

2.1 General Information

2.1.1 Applicable Code

This Inservice Testing Program for ISI Class 1, 2, 3 and NC Pumps meets the requirements of Subsection IWP of Section XI of the ASME Boiler and Pressure Vessel Code, 1980 Edition through the Winter of 1980 Addenda. Where these requirements are determined to be impractical, specific requests for relief have been written and included in Section 2.2.

2.1.2 Pump Program Tables

The tables in Appendix A list all pumps included in the Duane Arnold Energy Center IST Program. Data contained in these tables identifies those pumps subject to inservice testing, the inservice test quantities, the inservice testing interval, and any applicable remarks. The column headings are listed and explained below:

- PUMP NUMBER: The pump identification number
- PUMP NAME: The system of which the pump is a component.
- CLASS: The ISI classification of the pump
- P&ID: The DAEC drawing number for the P&ID referring to the pump
- COOR: The drawing coordinate location of the pump on the P&ID
- SPEED, INLET PRES, DIFF PRES, FLOWRATE, VIBRATION AND BEARING TEMP: Inservice test quantities to be measured. When the character "Y" appears in a particular test quantity column, that quantity will be measured during inservice testing in accordance with Subsection IWP. If a modified test is planned or if the character "N" appears in a particular test quantity column, a request for relief number will be referenced. Requests for relief are identified PR-X. The requests for relief are included in Section 2.2.
- TEST INTERVAL: The frequency of testing.
- REMARKS: Remarks in the IST Program are coded as Note 001, Note 002, etc.

2.1.3 Measurement of Test Quantities

- SPEED: Per IWP-4400, shaft speed measurements are not applicable (NA) for pumps directly coupled to synchronous or induction-type drivers. For variable speed pumps, the pump speed is set at the reference speed per IWP-3100.
- INLET PRESSURE: For pumps taking suction from a tank or the residual heat removal (RHR) service water complex basin, inlet pressure will be calculated (using appropriate correction factors) from a measured tank or basin level. All other inlet pressure measurements will be taken using pressure instruments at or near the pump inlet.
- DIFFERENTIAL PRESSURE: Differential pressure will be calculated from inlet and discharge pressure measurements or by direct differential pressure measurement.
- FLOWRATE: Pump flowrate will be measured.
- VIBRATION: Pump vibration will be measured.
- BEARING TEMPERATURE: Pump bearing temperature(s) will be measured when practical.

2.1.4 Allowable Ranges of Test Quantities

The allowable ranges specified in Table IWP-3100-2 will be used for differential pressure, flow and vibration measurements except as discussed in PR-8. Should a measured test quantity fall outside the allowable range, the possibility of defining an expanded allowable range, in accordance with ASME Code interpretation XI-1-79-19, will be investigated. In some cases, the performance of a pump may be adequate to fulfill its safety function even though there may be some parameter variation outside of the allowable ranges.

2.1.5 Bearing Lubricant

As specified in Table IWP-3100-1, the pump bearing lubricant level or pressure will be observed during inservice testing.

2.1.6 Instrument Accuracy

Allowable instrument accuracies are given in Table IWP-4110-1. In some cases, relief has been requested from the requirements of Table IWP-4110-1. (See Relief Request No. PR-7)

2.1.7 Exempted Pumps

The reactor recirculation centrifugal pumps have been exempted from the IST program because they do not perform a safety function. The reactor recirculation jet pumps have been exempted from the IST program because Subsection IWP is applicable to centrifugal and positive displacement pumps only. These pumps have been exempted in accordance with IWP-1100.

SECTION 2.2

RELIEF REQUESTS FOR PUMP TESTING PROGRAM

RELIEF REQUEST NO. PR-1

PUMP NUMBER:

DIESEL FUEL OIL PUMPS 1P-44A and 1P-44B

SECTION XI REQUIREMENTS:

Measure pump vibration amplitude quarterly and bearing temperature annually.
(IWP-3100)

BASIS FOR RELIEF:

The diesel fuel oil pumps and motors are inaccessible during operation. Both the pump and motor are submerged inside the diesel fuel oil tank (IT-35).

ALTERNATE TESTING:

No alternate testing is proposed.

FOR INFORMATION
ONLY

RELIEF REQUEST NO. PR-2

PUMP NUMBER:

EMERGENCY SERVICE WATER (ESW) PUMPS 1P-99A and 1P-99B.

SECTION XI REQUIREMENTS:

Measure bearing temperature annually. (IWP-3100)

BASIS FOR RELIEF:

The ESW pump motors are provided with roller bearings immersed in an integral oil bath reservoir. Discussions with the manufacturer of the motors (General Electric Company) indicate that measuring bearing temperatures would be difficult and of marginal value. Likewise, measuring oil temperature on an annual basis, is also questionable. It is estimated that approximately four hours of pump operation would be required for the oil temperature to stabilize. Furthermore, in this particular case due to the arrangement of the oil reservoir, oil temperature is more a function of winding and ambient air temperatures than of bearing temperature. It is likely that annual trends of oil temperature in this case would be of little value in determining the condition of pump bearings.

ALTERNATE TESTING:

No alternate testing is proposed.

RELIEF REQUEST NO. PR-3

PUMP NUMBER:

HIGH PRESSURE COOLANT INJECTION (HPCI) booster and main pumps 1P-216
REACTOR CORE ISOLATION COOLING (RCIC) pump 1P-226

SECTION XI REQUIREMENTS:

Measure pump vibration amplitude quarterly and bearing temperature annually.
(IWP-3100)

BASIS FOR RELIEF:

These measurements require stationing a man in close proximity to the pumps in the HPCI and RCIC rooms. Because of the rooms' layout, the man would be in a confined area distant from the exits. Consequently, should an accident occur such as the rupture of a steam line rupture disc, which has occurred previously (Ref. RO 78-02), the man probably could not exit in time to prevent serious injury. Thus, measurement of HPCI and RCIC pump vibration and bearing temperatures represents a significant safety hazard.

ALTERNATE TESTING:

Installation of permanent sensors for bearing temperature and vibration with remote readouts is under evaluation and is slated for completion in 1985. At that time measurements will be taken in accordance with IWP-3100 or request for relief will be submitted.

RELIEF REQUEST NO. PR-4

PUMP NUMBER:

RHR SERVICE WATER PUMPS 1P-22A, B, C, & D
ESW PUMPS 1P-99A & B
RIVER WATER PUMPS 1P-117A, B, C, & D
DIESEL FUEL OIL TRANSFER PUMPS 1P-44A & B
STANDBY LIQUID CONTROL PUMPS 1P-230A & B

SECTION XI REQUIREMENTS:

Measure pump inlet pressure before starting the pump and during the test.
(Table IWP-3100-1)

BASIS FOR RELIEF:

Pumps other than 1P-230 A & B are submerged and have inlet pressures which correspond to levels of the wet pit, the river, or diesel oil storage tank. Because these levels remain relatively constant before and during the test, only one measurement per test is necessary.

In the case of the standby liquid control (SBLC) pumps, no gauge is installed at the pump suction and suction pressure is assumed to be equivalent to the static head corresponding to the average height of test tank level above the pump suction.

ALTERNATE TESTING:

One inlet pressure, based on wet pit, river, or oil tank level, will be calculated per test.

One suction pressure for the SBLC Pumps will be calculated from the average test tank level during the test.

RELIEF REQUEST NO. PR-5

PUMP NUMBER:

RIVER WATER PUMPS 1P-117A, B, C, and D
CORE SPRAY PUMPS 1P-211A and B
HPCI PUMP 1P-216
RCIC PUMP 1P-226
RHR PUMPS 1P-229A, P. C, and D

SECTION XI REQUIREMENT:

Reference values shall be at points of operation readily duplicated during subsequent inservice testing. (IWP-3110)

BASIS FOR RELIEF:

Operating experience has shown that flowrates (independent variables during inservice performance testing) cannot be readily duplicated with the present flow control systems. Efforts to exactly duplicate reference values would require excessive valve manipulation which could ultimately result in damage to valves or operators.

ALTERNATE TESTING:

DAEC will implement an alternate means of measuring pump performance. Reference values will be established for flowrate (Q_r) and differential pressure (dP_r) during the reference value tests. However, in lieu of duplicating Q_r during subsequent inservice performance tests, a flowrate (Q_l), lower than Q_r , will be obtained and recorded along with the corresponding differential pressure (dP_l). Next, a flowrate (Q_h), higher than Q_r , will be obtained and recorded along with its corresponding differential pressure (dP_h). These two points, (Q_l, P_l) and (Q_h, P_h), define a small portion of the pump curve which intersects the vertical line defined by Q_r . (See Figure PR-5.1). Using linear interpolation between the two points, a differential pressure (dP) will be computed from the intersection of the pump curve and the vertical line established by Q_r . This computed value for dP will be recorded and compared to the reference differential pressure (dP_r) per table IWP-3100-2.

The alternate testing procedure described above assumes that the pump curve is nearly linear between Q_l and Q_h . Procedural limits for Q_l and Q_h have been established and individual pump curves have been analyzed to ensure near linearity between Q_l and Q_h .

FOR INFORMATION
ONLY

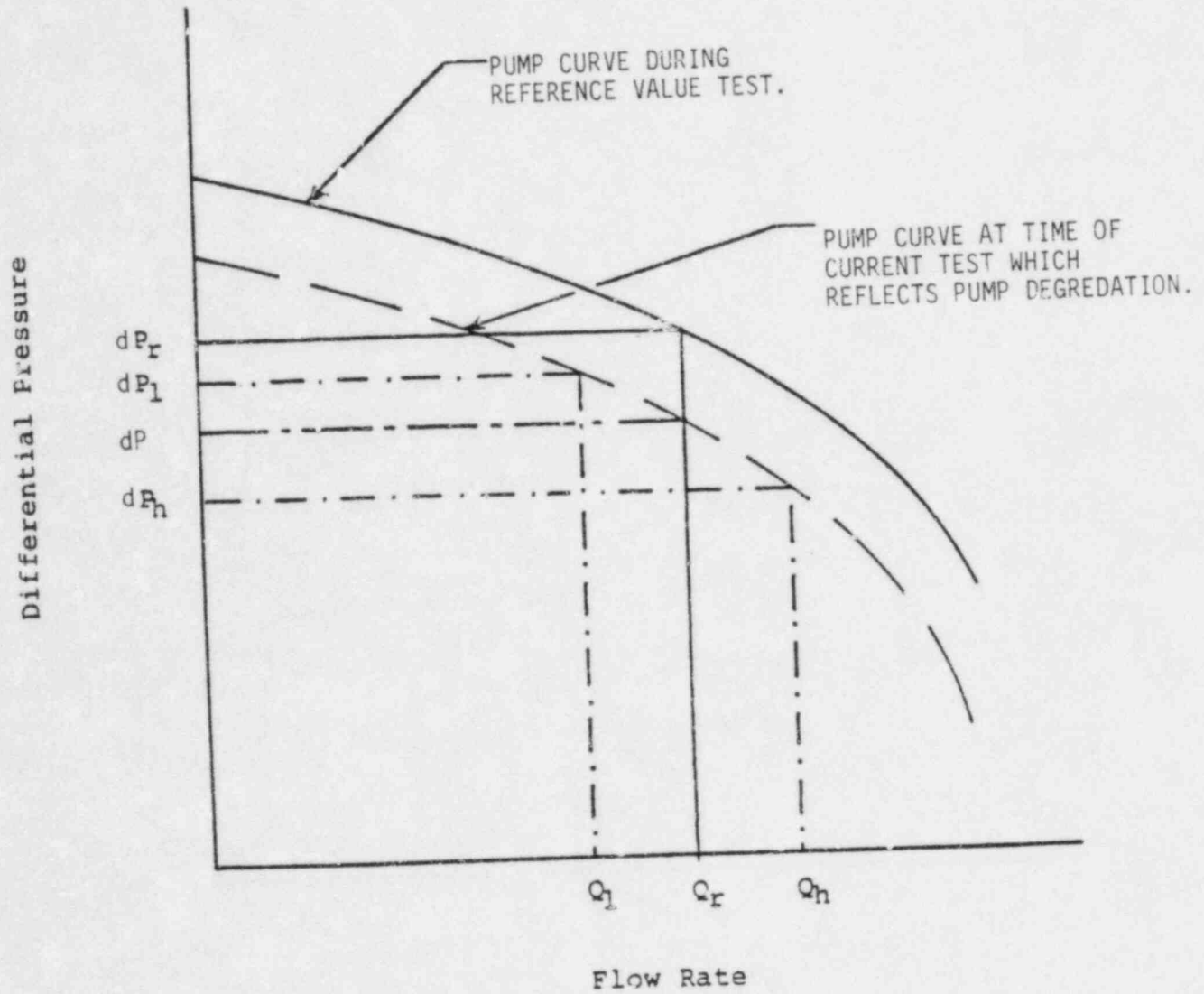


Figure PR-5.1 Alternate Testing Approach for Determination of Hydraulic Change

DUANE ARNOLD ENERGY CENTER	Page 17 of 66
TITLE: INSERVICE TESTING PROGRAM	Date 12-23-83 Rev. 5

RELIEF REQUEST NO. PR-6

PUMP NUMBER:

DIESEL FUEL OIL TRANSFER PUMPS 1P-44A and B

SECTION XI REQUIREMENTS:

Each pump shall be run at least five minutes under conditions as stable as system permits. (IWP-3500)

BASIS FOR RELIEF:

The diesel fuel oil transfer pumps cannot be operated for five minutes because the available capacities of the diesel oil day tanks are too small. Sufficient volume for both five minutes of operation and flow measurement by increase in tank level is required. Since the tank is filled at the end of each diesel generator operability test, about two hours of operation of the diesel generator would be needed to reduce the tank level to that required for retesting of the fuel oil pumps. The additional hour of operation of the diesel generator, beyond the one hour technical specification requirement, is unacceptable.

ALTERNATE TESTING:

As soon as the diesel fuel oil transfer pumps reach stable operation at the reference conditions, as indicated by a steady reading of the discharge pressure gauges, test data will be recorded.

RELIEF REQUEST NO. PR-7

PUMP NUMBER:

DIESEL OIL TRANSFER PUMPS 1P-44A and B
RIVER WATER PUMPS 1P-117A, B, C and D
HPCI PUMP 1P-216
RCIC PUMP 1P-226

SECTION XI REQUIREMENTS:

Instrument accuracy shall be within the limits of Table IWP-4110-1.

BASIS FOR RELIEF.

Based on engineering judgement, the difference between an instrument with an accuracy of + 2.0 percent of full scale and one with an accuracy of + 2.25 percent of full scale is insignificant. The costs due to replacing the existing instrumentation with new devices that meet the limits of Table IWP-4110-1 are not justified since there will be no corresponding improvement in the level of plant safety.

ALTERNATE TESTING:

Inservice test measurements of pressure, differential pressure, and flowrate will be taken using instruments with instrument accuracies that are less than or equal to + 2.25 percent of full scale.

DUANE ARNOLD ENERGY CENTER	Page 19 of 66
TITLE: INSERVICE TESTING PROGRAM	Date [redacted] Rev. 5

RELIEF REQUEST NO. PR-8

PUMP NUMBER:

All pumps (except Diesel Fuel Oil Transfer Pumps 1P-44 A & B).

SECTION XI REQUIREMENTS:

At least one displacement vibration amplitude (peak-to-peak composite) shall be read during inservice testing. (IWP-4510)

BASIS FOR RELIEF:

Measuring vibration in velocity units rather than amplitude is an industry accepted method considered to be more sensitive to small changes that oftentimes are indicative of developing mechanical problems. Velocity measurements detect not only high-amplitude vibration, characteristic of major mechanical problems, but low-amplitude vibrations caused by misalignment, imbalance, or bearing wear.

ALTERNATE TESTING:

Where practical, pump vibration measurements will be taken in velocity units. In all other cases, displacement measurements will conform to Paragraph IWP 4510. Acceptance criteria for velocity measurements will conform to ASME Publication 78-WA/NE-5 and Table PR-8.1.

TABLE PR-8.1

(1)

ALLOWABLE RANGES OF TEST QUANTITIES

QUANTITY	ACCEPTABLE RANGE	ALERT RANGE		REQUIRED ACTION RANGE	
		LOW VALUES	HIGH VALUES	LOW VALUES	HIGH VALUES
v When $0 \leq v_r \leq .15$ in/sec	0 to .3 in/sec	None	.3 in/sec to .45 in/sec	None	$v > .45$ in/sec
v When $.15$ in/sec $< v_r < .3$ in/sec	0 to .45 in/sec	None	.45 in/sec to .75 in/sec	None	$v > .75$ in/sec
v When $.3$ in/sec $< v_r < .6$ in/sec	0 to .9 in/sec	None	.9 in/sec to 1.5 in/sec	None	$v > 1.5$ in/sec
v When $.6$ in/sec $< v_r < 1.0$ in/sec	0 to 1.1 in/sec	None	1.1 in/sec to 1.5 in/sec	None	$v > 1.5$ in/sec

Where:

 v = velocity measured in inches/second, peak. v_r = reference velocity measured.

(1) See ASME Technical Paper 78-WA/NE-5.

DUANE ARNOLD ENERGY CENTER
INSERVICE TESTING PROGRAMPage 20 of 66
Date 12-23-83 Rev. 5

DUANE ARNOLD ENERGY CENTER	Page 21 of 66
TITLE: INSERVICE TESTING PROGRAM	Date 12-23-83 Rev. 5

RELIEF REQUEST NO. PR-9

PUMP NUMBER:

SCREEN WASH PUMPS 1P-112A and B

SECTION XI REQUIREMENTS:

An inservice test shall be run on each pump nominally every 3 months during normal plant operation. (IWP-3400)

BASIS FOR RELIEF:

There is currently no permanent instrumentation installed nor are there provisions for the installation of temporary instrumentation. An engineering evaluation is underway to identify instrumentation requirements and initiate necessary system modifications. Modifications will be accomplished during 1985.

ALTERNATE TESTING:

No alternate testing is proposed until modifications are completed. These pumps are currently test-operated as part of the DAEC surveillance test program.

DUANE ARNOLD ENERGY CENTER	Page 22 of 66
TITLE: INSERVICE TESTING PROGRAM	Date 12-23-83 Rev. 5

RELIEF REQUEST NO. PR-10

PUMP NUMBER:

DIESEL FUEL OIL PUMPS 1P-44 A & B

SECTION XI REQUIREMENTS:

Pump test results shall be analyzed per IWP-3200.

BASIS FOR RELIEF:

The ASME recognizes that the characteristics of systems containing other than steam or water (eg. fuel oil) may not necessarily lend themselves to the type and detailed requirements as specified by Subsection IWP. This is so stated in the ASME response to WPPSS inquiry, File no. BC 77-666/NI 77-371 dated 1/8/79. (See Appendix C) In cases where test data is erratic or questionable, strict compliance with the Section XI requirements will likely result in unnecessary pump maintenance and excessive testing of the fuel oil pumps and the emergency diesel generators.

ALTERNATE TESTING:

Analysis of the quarterly test data will be based on IWP-3200. In those cases where the test results are obviously erratic or misleading, alternate acceptance criteria will be developed.

FOR INFORMATION
ONLY

3.0 INSERVICE TESTING PROGRAM FOR VALVES

3.1 General Information

This testing program for ISI Class 1, 2, 3, and NC valves meets the requirements of Subsection IWV of Section XI of the ASME Boiler and Pressure Vessel Code, 1980 Edition through the Winter 1980 Addenda. Where these requirements are determined to be impractical, specific requests for relief have been written and included in Section 3.2.

The tables in Appendix B list all ISI Class 1, 2, 3, and NC valves that have been assigned valve categories. Valves exempt per IWV-1200 are not listed. The following information is included for each valve:

- VALVE NUMBER: The valve identification number.
- P&ID COORDINATE: The drawing coordinate location on the P&ID for the valve.
- CLASS: The ISI Classification of the valve.
- VALVE CATEGORY: The category(s) assigned to the valve based on the definitions per IWV-2200. Four (4) separate categories are defined in the Code:
 - CATEGORY A - Valves for which seat leakage is limited to a specific maximum amount in the closed position for fulfillment or their safety function.
 - CATEGORY B - Valves for which a specific amount of leakage in the closed position is not measured but which require stroke testing to verify their ability to fulfill their safety function.
 - CATEGORY C - Valves which are self-actuating in response to some system characteristic, such as pressure (relief valves) or flow direction (check valves).
 - CATEGORY D - Valves which are actuated by an energy source capable of only a single operation (eg. explosively-actuated valves).
- VALVE SIZE: The nominal size of the valve in inches.

- VALVE TYPE: The valve body design as indicated by the following abbreviations:

ANGLE	ANG
BALL	BAL
BUTTERFLY	BTF
CHECK	CK
EXCESS FLOW CHECK	XFC
GATE	GA
GLOBE	GL
NEEDLE	NDL
NOTCHED GLOBE	NGL
PLUG	PLG
RELIEF	RV
RUPTURE DIAPHRAGM	RPD
SAFETY	SV
SHEAR	SH
STOP CHECK	SCK
3-WAY	3WY
4-WAY	4WY

- ACTUATOR TYPE: The type of valve actuator as indicated by the following abbreviations:

MOTOR OPERATOR	MO
AIR-PILOT OPERATOR	AP
AIR OPERATOR	AO
SOLENOID OPERATOR	SO
HYDRAULIC OPERATOR	HO
EXPLOSIVE ACUTATOR	EXP
MANUAL	M
SELF ACTUATED & MANUAL OPERATED	MSA
SELF ACTUATED	SA
SELF ACTUATED & MOTOR OPERATED	SAM
SELF ACTUATED & PILOT OPERATED	SAP
SELF ACTUATED, TESTABLE CHECK	SAT

- NORMAL POSITION: The position of the valve during normal plant operation, specified as follows:

O	Normally Open
C	Normally Closed
O/LO	Normally Open/Locked Open
O/LC	Normally Open/Locked Closed
O/KL	Normally Open/Key Locked
O/FO	Normally Open/Fail Open
O/FC	Normally Open/Fail Closed
O/KO	Normally Open/Key Locked and Fail Open
C/LO	Normally Closed/Locked Open
C/LC	Normally Closed/Locked Closed
C/KL	Normally Closed/Key Locked
C/FO	Normally Closed/Fail Open
C/FC	Normally Closed/Fail Closed
C/KC	Normally Closed/Key Locked and Fail Closed
NE	Normally Energized
ND	Normally De-energized

Valves with fail-safe positions are indicated as either FO-fail open or FC-fail closed.

- TEST: The test(s) that will be performed to fulfill the requirements of Subsection IWV. The test definitions and abbreviations used are identified in Table 3.1-1.
- TEST FREQUENCY: The frequency at which the above mentioned tests will be performed. Test frequencies are defined in Table 3.1-2.
- MAXIMUM STROKE TIME: The limiting maximum value of full stroke time, in seconds, for power-operated valves in Category A or B.
- MAXIMUM LEAKAGE: The maximum leakage allowed during the specified leaktest. The abbreviations for the units of measurement are:
 - C Standard cubic centimeters per minute.
 - P Pressure decay in pounds per square inch per minute
 - G Gallons per minute
- RELIEF REQUEST: The reference to a relief request in Section 3.2 for valve testing. Requests for relief are identified as VR-XX.
- REMARKS: Remarks in the IST Program are coded as NOTE 001, NOTE 002, etc.

TABLE 3.1-1
INSERVICE VALVE TESTS

<u>TEST</u>	<u>TEST NAME</u>	<u>TEST DESCRIPTION</u>
AT-1	Type C leaktest	Containment isolation valves will be seat leak tested in accordance with DAEC Technical Specification requirements and Appendix J, 10CFR50.
AT-2	Excess flow check valve test	Excess flow check valves will be tested in accordance with DAEC Technical Specifications, Section 4.7.D.
AT-3	Safety and relief valve	Safety and relief valve leakage is continuously monitored by the safety and relief valve tailpipe temperature monitor. An alarm at 250°F indicates safety or relief valve leakage. Refer to DAEC Technical Specifications, Section 4.6.D.
AT-4	Vacuum breaker leaktest	The suppression chamber-drywell vacuum breaker will be leak tested in accordance with DAEC Technical Specifications, Section 4.7.4.
AT-5	Pressure isolation valve leaktest	Those valves so designated will be leak tested in accordance with IWV-3420 using water as a test medium.
BTO	Full-stroke exercise test to the OPEN position (IWV-3412 and 3413)	Exercise testing in the open direction, verified by stroke time measurement, will be performed to confirm the full stroke capability of each valve. The stroke direction tested and timed (open) is based on the direction the valve disk must travel to fulfill a safety function.
BTC	Full-stroke exercise test to the CLOSE position (IWV-3412 and 3413)	Exercise testing in the close direction, verified by stroke time measurement, will be performed to confirm the full stroke capability of each valve. The stroke direction tested and timed (close) is based on the direction the valve disk must travel to fulfill a safety function.
BTD	Full-stroke exercise test to de-energized position	Solenoid valves, which direct control air to main air-operated valves, are shown to stroke to their de-energized position by the proper operation of the associated main valves.

TITLE: INSERVICE TESTING PROGRAM

DUANE ARNOLD ENERGY CENTER

Date 12-23-83 Rev. 5

Page 26 of 66

TABLE 3.1-1

INSERVICE VALVE TESTS (continued)

<u>TEST</u>	<u>TEST NAME</u>	<u>TEST DESCRIPTION</u>
BTE	Full-stroke exercise test to energized position valves.	Solenoid valves, which direct control air to main air-operated valves, are shown to stroke to their energized position by the proper operation of the respective main valves.
CT-CO	Check valve exercise test to OPEN position (IWV-3412)	Check valves will be exercised from the fully closed to the fully open positions. Verification of safety basis system flow through a check valve shall be an adequate demonstration that the valve is full open. The stroke direction tested (open) is based on the direction the valve disk must travel to fulfill a safety function.
CT-CC	Check valve exercise test to CLOSED position (IWV-3412)	Check valves will be exercised from the fully open to the fully closed positions. The stroke direction tested (closed) is based on the direction the valve disk must travel to fulfill a safety function.
CT-SP	Relief valve set point verification test (IWV-3510)	Relief and safety valve set point will be verified in accordance with IWV-3510.
DT	Explosive valve test (IWV-3610 and 3620)	Explosively-actuated valves will be tested in accordance with IWV-3610.
FST	Fail-safe test (IWV-3415)	All valves with fail-safe actuators will be tested to verify proper fail-safe operation upon loss of actuator electric power.
PIT	Position indication checks (IWV-3300)	All valves with position indicators will be checked to verify that remote valve indicators accurately reflect valve operation

DUANE ARNOLD ENERGY CENTER
TITLE: INSERVICE TESTING PROGRAM

Page 27 of 66
Date 12-23-83 Rev. 5

TABLE 3.1-2
TEST FREQUENCY

(1)

<u>TEST FREQUENCY</u>	<u>OPERATIONAL CONDITION</u>	<u>FREQUENCY OF TESTING</u>
OP	Power operation	At least once per 92 days
CS	Cold shutdown	See (2) below
RR	Refueling	Not less than once every two years
SP	See appropriate relief request	See appropriate relief request
5Y	No operational condition limitations	Every five years (see Article IWV-3511). Applies to CT-SP test.
2Y	No operational condition limitations	Every two years (see Article IWV-3300). Applies to PIT test.

(1) Operational conditions are defined in DAEC Technical Specifications, page 1.0-3.

(2) Inservice valve testing will commence within 48 hours of reaching the cold shutdown condition as defined in the DAEC Technical Specifications. Testing not completed before startup may be completed during subsequent cold shutdowns. Valve testing need not be performed more often than once every three months. In the case of extended cold shutdowns, the testing need not be started within the 48-hour limitation. However, in these instances, all valve testing must be completed prior to startup.

NOTE: It is expected that the required testing will normally be completed within 96 hours following cold shutdown. However, completion of all valve testing during cold shutdowns is not required if plant operating conditions do not permit testing of specific valves.

DUANE ARNOLD ENERGY CENTER
 TITLE: INSERVICE TESTING PROGRAM

Page 28 of 66
 Date 12-23-83 Rev. 5

SECTION 3.2

RELIEF REQUESTS FOR INSERVICE VALVE TESTING PROGRAM

DUANE ARNOLD ENERGY CENTER

Page 30 of 66

TITLE: INSERVICE TESTING PROGRAM

Date 12-23-83 Rev. 5

RELIEF REQUEST NO. VR-1

-VOID-

RELIEF REQUEST NO. VR-2

SYSTEMS:

Various

COMPONENTS:

All solenoid and air-pilot operators without individual position indication.

CATEGORY:

A & B

FUNCTION:

Solenoid and air-pilot operators are used to control actuators on many valves.

TEST REQUIREMENT:

Stroke time evaluation per IWV-3413 (b).

BASIS FOR RELIEF:

Solenoid and air-pilot valves which control the air supply to a main valve usually do not have indicator lights. However, the operation of the main valve within its stroke time limit implies that the solenoid and/or air-pilot valve is performing satisfactorily.

ALTERNATE TESTING:

For solenoid-operated and air pilot-operated valves which control the air supply to air-operated valves and have no individual position indication, verification that the main valve has stroked to the correct position within its respective time limits will provide adequate evidence that the solenoid or air pilot-operated valve has stroked to its proper position within the required time. When the letters "NA" appear in the stroke time column of the Inservice Testing Program Listing, the valve's stroke time is verified indirectly by the stroke time measurement of its associated main valve.

DUANE ARNOLD ENERGY CENTER

Page 32 of 66

TITLE: INSERVICE TESTING PROGRAM

Date 12-23-83 Rev. 5

RELIEF REQUEST NO. VR-3

-VOID-

FOR INFORMATION
ONLY

DUANE ARNOLD ENERGY CENTER

Page 33 of 66

TITLE: INSERVICE TESTING PROGRAM

Date 12-23-83 Rev. 5

RELIEF REQUEST NO. VR-4

-VOID-

DUANE ARNOLD ENERGY CENTER

Page 34 of 66

TITLE: INSERVICE TESTING PROGRAM

Date 12-23-83 Rev. 5

RELIEF REQUEST NO. VR-5

-VOID-

IMAGE EVALUATION
TEST TARGET (MT-3)

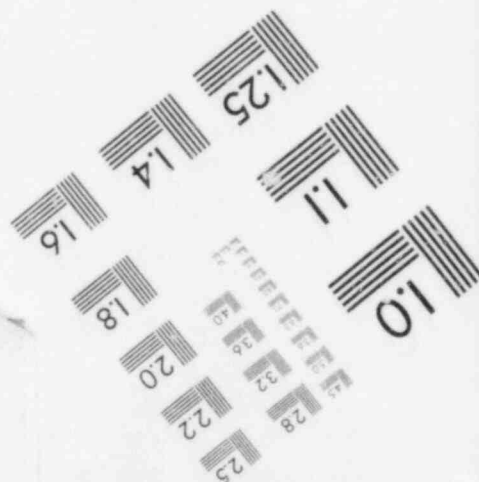
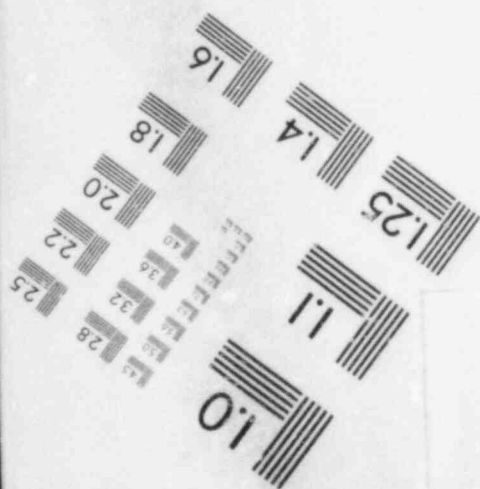
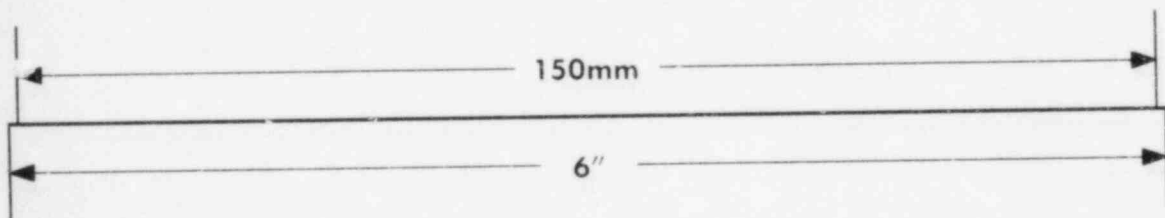
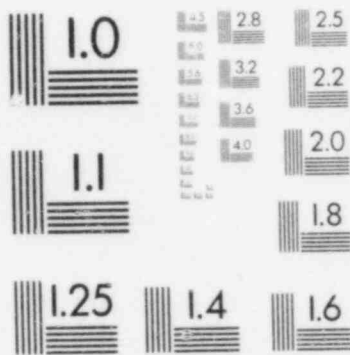
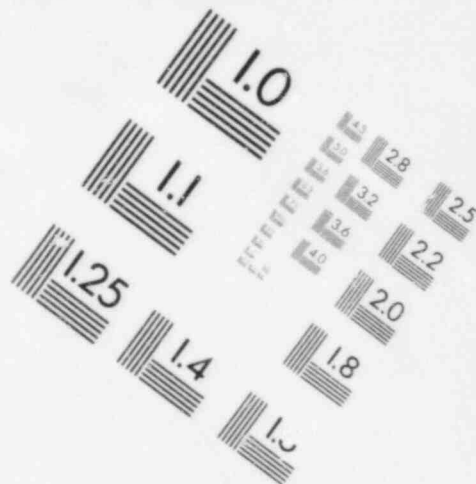
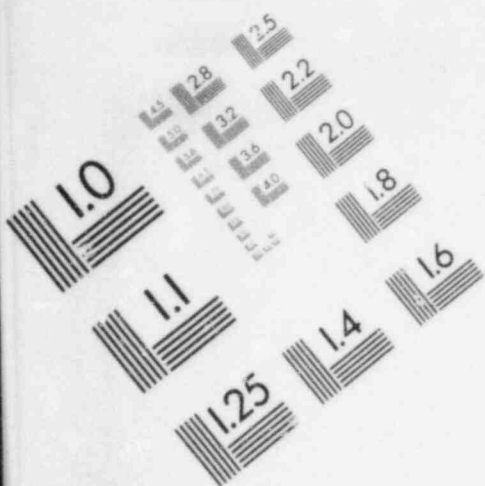
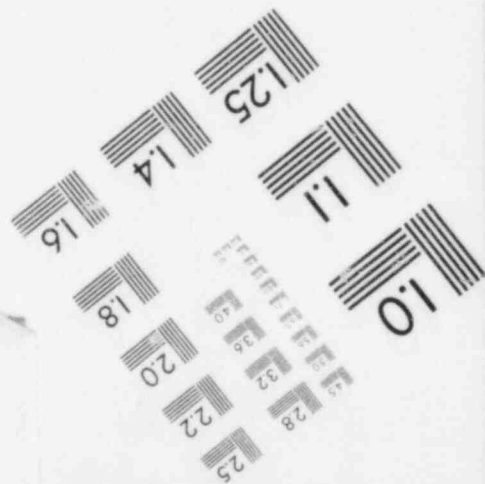
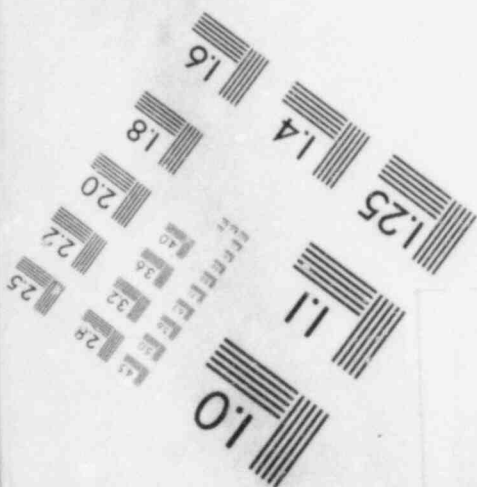
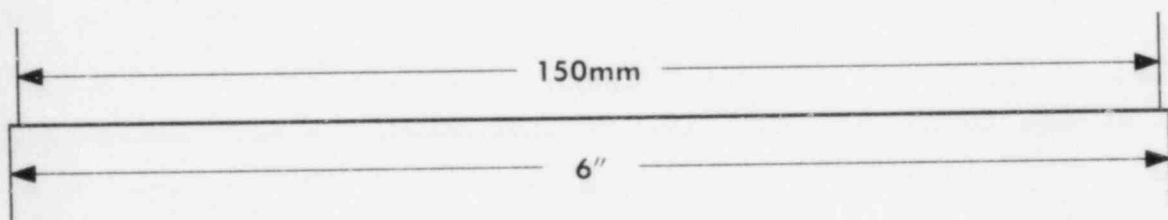
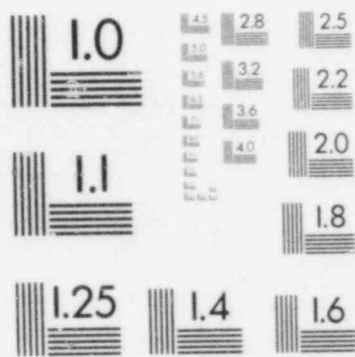
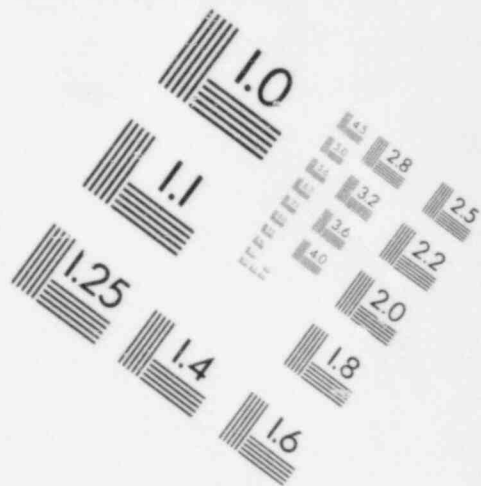
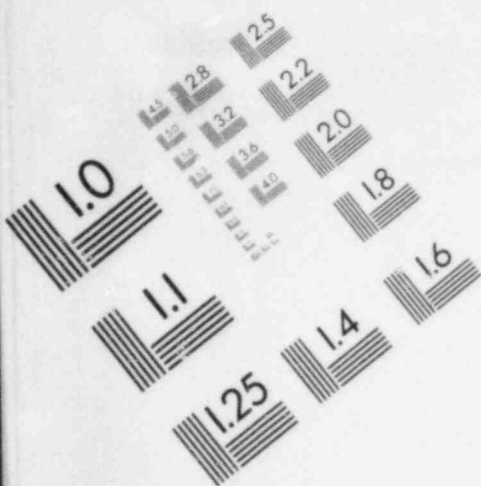


IMAGE EVALUATION
TEST TARGET (MT-3)



RELIEF REQUEST NO. VR-6

SYSTEM:

NUCLEAR BOILER

COMPONENTS:

Reactor Relief Valves

Solenoid Valves

PIS No.

PIS No.

PSV-4400 *

SV-4400

PSV-4401

SV-4401

PSV-4402 *

SV-4402

PSV-4405 *

SV-4405

PSV-4406 *

SV-4406

PSV-4407

SV-4407

*Automatic Depressurization System (ADS)

CATEGORY:

A/C for the reactor relief valves

B for solenoid valves

FUNCTIONS:

The functions of the relief valves are to: (1) open upon receipt of an ADS signal to blowdown reactor vessel (for the ADS valves only) and (2) act as primary system safety valve actuating on high system pressure or capable manual actuation from the control room.

The function of the solenoid valves is to energize upon receipt of a manual or ADS relief valve actuation signal and, in so doing, vent the poppet valve assembly causing the associated main valves to open.

TEST REQUIREMENT:

Exercise and time valves every three months (BTO).

DUANE ARNOLD ENERGY CENTER	Page 36 of 66
TITLE: INSERVICE TESTING PROGRAM	Date 12-23-83 Rev. 5

RELIEF REQUEST NO. VR-6 (continued)

BASIS FOR RELIEF:

Relief is requested from the Section XI required testing frequency of once every three months. Exercising these valves during normal operation would cause primary system pressure spikes and reactor power fluctuations which could lead to a reactor scram. These valves will be exercised once per operating cycle as specified in DAEC Technical Specifications, Section 4.6.D.3.

In addition, relief is requested from the stroke timing requirements of Section XI. It is impractical to measure stroke times for relief and solenoid valves since the stroke times are on the order of 100 milliseconds. An abrupt change in the turbine bypass valve position will verify that the solenoid and relief valves have performed their function.

NOTE: Stroke timing requirements for the solenoid valves are discussed in Relief Request No. VR-2.

ALTERNATE TESTING:

These valves will be exercised at least once per operating cycle. The response of these valves will be verified by observing an abrupt change in the turbine bypass valve position. No stroke times will be measured.

RELIEF REQUEST NO. VR-7

SYSTEM:

NUCLEAR BOILER

COMPONENTS:

- | | |
|-----------|-----------|
| PSV-4439A | PSV-4439D |
| PSV-4439B | PSV-4439E |
| PSV-4439C | PSV-4439F |

CATEGORY:

C

FUNCTION:

During a relief valve discharge, these valves must be closed to prevent steam release into the drywell. After a relief valve discharge, steam remaining in the relief valve discharge piping will condense and draw a vacuum in the discharge line. These relief valves (vacuum breakers) open to admit air to the discharge line thus relieving the vacuum condition.

TEST REQUIREMENT:

Exercise in the open and close directions every three months (CT-CC, CT-CO).

BASIS FOR RELIEF:

These valves have no external means of actuation for exercising. The only practical method for exercising these valves is by manually pushing the disk from its seat. This requires access to the valves, which are located in the drywell.

ALTERNATE TESTING:

These valves will be exercised during each refueling outage concurrently with the setpoint verification tests (CT-SP).

DJAME ARNOLD ENERGY CENTER	Page 38 of 66
TITLE: INSERVICE TESTING PROGRAM	Date 12-23-83 Rev. 5

RELIEF REQUEST NO. VR-8

SYSTEMS:

NUCLEAR BOILER, REACTOR RECIRCULATION, REACTOR CORE ISOLATION COOLING, CORE SPRAY, HIGH PRESSURE COOLANT INJECTION, and REACTOR VESSEL INSTRUMENTATION

COMPONENTS:

Excess flow check valves

CATEGORY:

A/C

FOR INFORMATION
ONLY

FUNCTIONS:

Excess flow check valves limit leakage from the reactor coolant system in the event of instrumentation piping failures outside containment by closing at 10 psid and perform a containment isolation function if an instrument line were to fail inside containment concurrent with a similar failure outside containment.

TEST REQUIREMENTS:

Exercise in the closed direction every three months (CT-CC).
Conduct valve seat leakage tests once every two (2) years. (AT-1)

BASIS FOR RELIEF:

Exercising of these valves is impractical during normal operation since it requires isolating instrumentation downstream of the excess flow check valves. Additionally, this testing involves a total of 94 valves which would require excessive cold shutdown time solely to accomplish this testing and would greatly increase total personnel radiation exposure.

The excess flow check valves, designated FLO-FUSE by the manufacturer (Marietta Valve Corp, Boonton, New Jersey), have no provision for leaktesting nor are there such provisions in the upstream side of the lead-in tubing from the root valves. Thus, there is no practical method of conducting leaktests of these valves.

It should be noted that these valves see little or no flow and essentially function only during the exercise testing described below. Also, the significant internal components are fabricated from corrosion-resistant materials that are not expected to degrade during the plant lifetime. For these reasons, general seat degradation is highly unlikely. Gross failure of the seat, if present, will be identified during exercise testing.

ALTERNATE TESTING:

These valves will be exercised during each reactor refueling in accordance with DAEC Technical Specifications, Section 4.7.D.

DUANE ARNOLD ENERGY CENTER TITLE: INSERVICE TESTING PROGRAM	Page 39 of 66 Date 12-23-83 Rev. 5
--	---------------------------------------

RELIEF REQUEST VR-9

-VOID-

RELIEF REQUEST VR-10

-VOID-

RELIEF REQUEST NO. VR-11

SYSTEM:

CONTAINMENT ATMOSPHERE CONTROL

COMPONENTS:

CV-4327A	CV-4327F
CV-4327B	CV-4327G
CV-4327C	CV-4327H
CV-4327D	

CATEGORY:

A/C

FUNCTION:

These are the pressure suppression chamber to drywell vacuum breaker valves which equalize the pressure between the two volumes when the suppression chamber pressure exceeds that in the drywell.

TEST REQUIREMENT:

Measure valve seat leakage and compare the measured leakage to a specific maximum leakage for each valve (IWV-3426).

BASIS FOR RELIEF:

A specific maximum leakage per valve is not applicable to the vacuum breaker valve testing. As part of the containment integrity (Type A) test a pressure decay test is performed on the pressure suppression chamber atmosphere in accordance with DAEC Technical Specifications Section 4.7.A.4.d. This pressure decay test demonstrates the aggregate leak tightness of the vacuum breaker valves.

ALTERNATE TESTING:

The leak tightness of the pressure suppression chamber to drywell vacuum breakers will be demonstrated during the containment integrity (Type A) test. This test consists of establishing a drywell to suppression chamber pressure differential of 1.1 psi and then measuring the suppression chamber pressure increase over a ten (10) minute period. If this pressure increase is less than 0.009 psi/min the vacuum breakers have demonstrated adequate leak tightness.

RELIEF REQUEST NO. VR-12

SYSTEM:

CONTROL ROD DRIVE HYDRAULIC

COMPONENTS:

V-17-83
V-17-96

CATEGORY:

A/C

FUNCTIONS:

Prevent backflow through the reactor recirculation pumps seal purge line. They also function as primary containment isolation valves.

TEST REQUIREMENT:

Exercise every three (3) months (CT-CC).

BASIS FOR RELIEF:

These simple check valves cannot be remotely operated. They are located inside primary containment and are not accessible for testing during reactor operation. Additionally, the primary containment is inerted with nitrogen during plant operation. De-inerting and then re-inerting the containment atmosphere each cold shutdown solely for the purpose of conducting valve testing would represent an excessive operational burden. These valves cannot be exercised by utilizing outside drywell test lines because the reactor recirculation pumps would require venting, necessitating containment entry. These valves can be exercised closed during leakrate testing performed during refueling outages.

ALTERNATE TESTING:

Exercise valve for operability during each refueling outage (RR). Normal system operation implies that the valves are open. By verifying that the valves close with the leaktest, the valves are indirectly observed to stroke from their open to closed positions.

FOR INFORMATION
ONLY

RELIEF REQUEST NO. VR-13

SYSTEM:

CONTROL ROD DRIVE (CRD) HYDRAULIC

COMPONENTS:

CV-1849
CV-1850
SV-1855
SV-1856
V-18-118 thru 206
V-18-919 thru 1007
V-18-1453 thru 1541

CATEGORY:

CV-1849, CV-1850, SV-1855 and SV-1856 -- Category B
V-18-118 thru 206, V-18-919 thru 1007, and V-18-1453 thru 1541-- Category C

FUNCTIONS:

- CV-1849 - Opens with SCRAM signal to pressurize lower side of CRD piston from accumulator.
- CV-1850 - Opens with SCRAM signal to vent top of CRD piston to scram discharge header.
- SV-1855 &
SV-1856 - Pilot valves for CV-1849 & CV-1850, respectively. Open on SCRAM signal to vent air operators.
- V-18-118
thru 206 - Prevent bypassing drive water to charging water header (if depressurized); open to charge accumulators following SCRAM.
- V-18-919
thru 1007 - Prevent backflow into cooling water header during SCRAM; allow cooling water circulation during normal operation.
- V-18-1453
thru 1541 - Open to allow flow from top of CRD pistons to the scram discharge header.

DUANE ARNOLD ENERGY CENTER	Page 44 of 66
TITLE: INSERVICE TESTING PROGRAM	Date 12-23-83 Rev. 5

Relief Request No. VR-13 (continued)

TEST REQUIREMENTS:

Exercise and time air-operated and solenoid valves every three months (BTO, BTC).

Exercise check valves every three months (CT-CO, CT-CC).

The corresponding fail-safe test is discussed in VR-17.

BASIS FOR RELIEF:

These valves can only be tested by scrambling each individual control rod. Due to extensive effort and operational constraints associated with scram testing, this is impractical to accomplish on a quarterly basis or even during cold shutdown periods.

Exercising and measuring the individual stroke times of the air-operated scram valves (CV-1849 and CV-1850) is impractical due to design limitations. There is a single position indicating light for both valves that is energized only when both valves are not in the fully-closed position. Thus, in order to accurately measure stroke time, additional individual position indicating circuitry is required. Such a backfit would be costly and could possibly detract from the basic reliability of the present configuration.

Proper operation of the check valves is monitored during plant operation. Failure of any of these manifests itself in abnormal operation of the associated control rod drive which would be noted (and corrected) by the plant staff.

ALTERNATIVE TESTING:

Proper operation of these valves is demonstrated during normal plant operation and scram testing each operating cycle. The testing and acceptance criteria of the DAEC Technical Specifications, Sections 4.3.C and 3.3.C, will be substituted for stroke timing and exercising of individual valves.

DUANE ARNOLD ENERGY CENTER	Page 45 of 66
TITLE: INSERVICE TESTING PROGRAM	Date 12-23-83 Rev. 5

RELIEF REQUEST NO. VR-14

SYSTEM:

CONTROL ROD DRIVE HYDRAULIC

COMPONENTS:

SV-1851
SV-1852
SV-1853
SV-1854

CATEGORY:

B

FUNCTIONS:

There are 89 sets of these valves--one for each control rod drive. Normal insertion and withdrawal of the CRD's is accomplished by opening and closing a particular set of valves (only one CRD can be moved at a time). These valves are not required to change position during a scram, but must be maintained in their normally-closed position.

TEST REQUIREMENT:

Exercise and time valves in the closed direction every three months (BTC).
Fail-safe test (FST) valves every three months.

BASIS FOR RELIEF:

The proper operation of these valves is demonstrated frequently during normal operation as discussed in DAEC Technical Specifications, Section 4.3.A.2. Malfunctioning valves would be evidenced by unusual rod movement (drift). Therefore, a special exercise and timing test for operability is not required for these valves.

ALTERNATE TESTING:

The control rod drives will be continuously monitored for proper operation as required by the DAEC Technical Specifications. Weekly tests and periodic scram testing will demonstrate that the subject valves are in the closed position and operating properly. Stroke times will not be measured for the subject valves.

FOR INFORMATION
ONLY

RELIEF REQUEST VR-15

-VOID-

DUANE ARNOLD ENERGY CENTER

Page 47 of 66

TITLE: INSERVICE TESTING PROGRAM

Date 12-23-83 Rev. 5

RELEIF REQUEST VR-16

-VOID-

DUANE ARNOLD ENERGY CENTER	Page 48 of 66
TITLE: INSERVICE TESTING PROGRAM	Date 12-23-83 Rev. 5

RELIEF REQUEST NO. VR-17

SYSTEM:

ALL SYSTEMS

COMPONENTS:

All valves equipped to fail open or closed.

CATEGORY:

A and B

FUNCTION:

Upon loss of electrical power, the valve must stroke to its fail-safe position.

TEST REQUIREMENT:

Solenoid valves which control the air supply to air-operated valves and direct solenoid-operated valves must stroke to their fail-safe position upon interruption of their electrical supply. (FST).

BASIS FOR RELIEF:

De-energizing the solenoid valve has the same effect as loss of electrical power. Therefore, stroking the valve from the control room (BTO, BTC) to its fail-safe position constitutes an FST.

ALTERNATE TESTING:

Normal stroking (BTO, BTC), to the fail-safe position of valves equipped to fail open or closed constitutes an FST. No additional testing is necessary.

RELIEF REQUEST NO. VR-18

SYSTEM:

HIGH PRESSURE COOLANT INJECTION (HPCI)

COMPONENT:

SV-2219

CATEGORY:

B

FUNCTION:

This valve functions as the HPCI turbine drain pot level control valve and is a Class 2 isolation valve.

TEST REQUIREMENT:

Exercise and time valve every three months (BTC).

BASIS FOR RELIEF:

This valve has no individual handswitch, but is operated automatically by a local controller. Also, it has no position indication lights. As such, the valve cannot be operated to verify operability. However, during HPCI turbine operation, indirect verification of its operability can be made by observing that the HPCI turbine drain pot high level alarm actuates and then resets. This would mean that the valve is actually opening and closing as required to maintain proper drain pot level. Stroke timing, however, cannot be done.

ALTERNATE TESTING:

No alternate testing is proposed. Valve operability will be verified in the manner described above.

FOR INFORMATION
ONLY

RELIEF REQUEST NO. VR-19

SYSTEM:

NUCLEAR BOILER

COMPONENTS:

V-14-9	V-14-32	V-14-112
V-14-14	V-14-100	V-14-116
V-14-15	V-14-104	V-14-120
V-14-16	V-14-108	V-14-124

CATEGORY:

C

FUNCTION:

These valves must close upon loss of normal air or nitrogen supply to the automatic depressurization system (ADS) relief valve accumulators and the main steam isolation valve accumulators.

TEST REQUIREMENT:

Exercise valves in the closed direction every three months (CT-CC).

BASIS FOR RELIEF:

The position of these valves cannot be verified during normal operation since they are simple check valves and have no position indicators. In addition, access to these valves is limited since they are located either inside the drywell or the steam tunnel.

ALTERNATE TESTING:

These valves will be exercised during refueling. More frequent testing is not practical because a leaktest must be performed to verify that they are closed.

DUANE ARNOLD ENERGY CENTER	Page 51 of 66
TITLE: INSERVICE TESTING PROGRAM	Date 12-23-83 Rev. 5

RELIEF REQUEST NO. VR-20

SYSTEM:

STANDBY LIQUID CONTROL (SLCS)

COMPONENTS:

V-26-08
V-26-09

CATEGORY:

A/C

FUNCTIONS:

The safety functions of these check valves are to open during system injection and close for containment isolation.

TEST REQUIREMENT:

Exercise valve in the open and closed directions every three months (CT-CO, CT-CC).

BASIS FOR RELIEF:

These check valves are normally closed. They can only be stroked closed during seat leakage tests performed during reactor refueling. To stroke these valves open, the SLCS pumps must discharge directly into the reactor vessel through the explosively-actuated isolation valves. This cannot be done during normal operation or cold shutdown since the SLCS system must be drained and flushed to prevent contamination of the reactor coolant with sodium pentaborate. In addition, extensive testing is required to replace the explosive charges of the isolation valves.

ALTERNATE TESTING:

These valves will be exercised open and closed during each reactor refueling.

DUANE ARNOLD ENERGY CENTER	Page 52 of 66
TITLE: INSERVICE TESTING PROGRAM	Date 12-23-83 Rev. 5

RELIEF REQUEST NO. VR-21

SYSTEM:

HIGH PRESSURE COOLANT INJECTION (HPCI)
REACTOR CORE ISOLATION COOLING (RCIC)

COMPONENTS:

V-23-01
V-25-01

CATEGORY:

C

FUNCTIONS:

These valves are designed to prevent backflow into the suppression pool in the event of pump suction shift from the contaminated condensate storage tank (CCST) to the suppression pool. The safety-related function of these valves is to open to provide suction flow to the HPCI and RCIC pumps.

TEST REQUIREMENT:

Exercise every three months (CT-CO).

BASIS FOR RELIEF:

There is no convenient method for verifying the ability of these valves to swing to the full-open position. The system test circuits utilize the CCST for pump suction rather than the suppression pool. Taking suction from the suppression pool during testing is undesirable because, in so doing, torus water would be transferred to the condensate storage tank. Since torus water is not demineralized, the entire condensate storage tank inventory would require processing following each test.

ALTERNATE TESTING:

In lieu of the Code-required full-stroke test, valve operability will be demonstrated by disassembling the valves during each refueling outage and verifying that the valve disk swings freely to the open position. Since these valves have no function during normal operation, no internal wear-induced degradation is expected.

DUANE ARNOLD ENERGY CENTER

Page 53 of 66

TITLE: INSERVICE TESTING PROGRAM

Date 12-23-83 Rev. 5

RELIEF REQUEST VR-22

-VOID-

TITLE: INSERVICE TESTING PROGRAM

Date 12-23-83 Rev. 5

RELIEF REQUEST VR-23

-VOID-

RELIEF REQUEST NO. VR-24

SYSTEM:

CONTAINMENT ATMOSPHERE CONTROL

COMPONENTS:

V-43-82
V-43-84
V-43-86
V-43-88

CATEGORY:

C

FUNCTION:

The function of these check valves is to prevent backflow from the containment into the containment atmosphere dilution (CAD) system.

TEST REQUIREMENT:

Exercise valve every three (3) months (CT-CO).

BASIS FOR RELIEF:

These valves are verified open during the CAD system functional test and verified closed during the Type C leak tests on the downstream containment isolation valves. Both of these tests are performed during reactor refueling.

ALTERNATE TESTING:

Valves will be exercised during each refueling outage (RR).

RELIEF REQUEST NO. VR-25

SYSTEM:

CONTAINMENT ATMOSPHERE CONTROL

COMPONENT:

V-43-214

CATEGORY:

A/C

FUNCTIONS:

This valve prevents backflow from the containment into the nitrogen inerting supply line and also functions as a primary containment isolation valve.

TEST REQUIREMENT:

Exercise valve every three (3) months (CT-CC).

BASIS FOR RELIEF:

This simple check valve cannot be remotely operated. It is located inside primary containment and is not accessible for testing during reactor operation. Additionally, the primary containment is inerted with nitrogen during plant operation. De-inerting and then re-inerting the containment atmosphere each cold shutdown solely for the purpose of conducting valve testing would represent an excessive operational burden. This valve can be exercised closed during leakrate testing performed during refueling outages.

ALTERNATE TESTING:

This valve will be exercised during each refueling outage (RR).

FOR INFORMATION
ONLY

TITLE: INSERVICE TESTING PROGRAM

Date 12-23-83 Rev. 5

RELIEF REQUEST VR-26

-VOID-

DUANE ARNOLD ENERGY CENTER

Page 58 of 66

TITLE: INSERVICE TESTING PROGRAM

Date 12-23-83 Rev. 5

RELIEF REQUEST VR-27

-VOID-

TITLE: INSERVICE TESTING PROGRAM

Date 12-23-83 Rev. 5

RELIEF REQUEST VR-28

-VOID-

RELIEF REQUEST NO. VR-29

SYSTEMS:

NUCLEAR BOILER, RESIDUAL HEAT REMOVAL, CORE SPRAY, HIGH PRESSURE COOLANT INJECTION, REACTOR CORE ISOLATION COOLING, RADWASTE SUMP, CONDENSATE & DEMINERALIZED WATER

COMPONENTS:

CV-2211	MO-1900	V-09-111
CV-2410	MO-1908	
CV-3704	MO-2117	
CV-3728	MO-2137	
	MO-2238	
	MO-2400	
	MO-4423	

CATEGORY:

A

FUNCTIONS:

These valves are subject to 10 CFR 50, Appendix J, Type C leak testing.

TEST REQUIREMENT:

Valve seat leakage tests shall be made with the pressure differential in the same direction as when the valve is performing its function. These valves are gate valves and are not exempt from the above requirement (IWV-3423).

BASIS FOR RELIEF:

Wedge disk gate valves have the same sealing characteristics in either direction. Therefore, testing these valves in the opposite direction to that in which they perform their containment isolation function is equivalent to testing in the accident direction.

ALTERNATE TESTING:

The piping between the two isolation valves will be pressurized and the low-pressure side of each valve will be vented. The combined leakage from the two containment isolation valves in series will be conservatively attributed to the penetration being tested.

DUANE ARNOLD ENERGY CENTER	Page 61 of 66
TITLE: INSERVICE TESTING PROGRAM	Date 12-23-03 Rev. 5

RELIEF REQUEST NO. VR-30

SYSTEM:

CONTROL ROD DRIVE (CRD) HYDRAULIC

COMPONENTS:

V-17-52
V-17-53

CATEGORY:

A/C

FUNCTION:

These valves provide containment isolation for the control rod drive hydraulic system.

TEST REQUIREMENT:

Check valves will be exercised from the full-open to the full-closed positions every three months (CT-CC).

BASIS FOR RELIEF:

These valves are in the CRD return line to the reactor vessel. In accordance with NUREG-0619, this system is no longer used. Therefore, these check valves are now passive valves and verifying that they stroke from the open to closed positions is not necessary.

ALTERNATE TESTING:

The closed position is verified during leaktests performed once each cycle.

RELIEF REQUEST NO. VR-31

SYSTEM:

NEUTRON MONITORING

COMPONENT:

TIP-CK

CATEGORY:

A/C

FUNCTION:

This valve provides containment isolation for the nitrogen purge portion of the TIP system.

TEST REQUIREMENT:

Check valves will be exercised from the full-open to the full-closed positions every three months (CT-CC).

BASIS FOR RELIEF:

This valve is a simple check valve and thus the only practical method to verify closure is by performing a leaktest. Conducting such tests every three months is excessively time consuming and difficult.

ALTERNATE TESTING:

This valve will be full stroke exercised to the closed position during each refueling outage (RR).

FOR INFORMATION
ONLY

RELIEF REQUEST NO. VR-32

SYSTEM:

CONTAINMENT ATMOSPHERE MONITORING SYSTEM
POST ACCIDENT SAMPLING SYSTEM

COMPONENTS:

SV-8101A	SV-8106A	SV-4594A
SV-8101B	SV-8106B	SV-4594B
SV-8102A	SV-8107A	SV-8772A
SV-8102B	SV-8107B	SV-8772B
SV-8103A	SV-8108A	
SV-8103B	SV-8108B	
SV-8104A	SV-8109A	
SV-8104B	SV-8109B	
SV-8105A	SV-8110A	
SV-8105B	SV-8110B	

CATEGORY:

A

FUNCTION:

These valves provide containment isolation for the containment atmosphere monitoring and post accident sampling systems.

TEST REQUIREMENT:

Exercise valves in the closed direction every three months (BTC). The stroke time of all power-operated valves shall be measured. (IWV-3413)

BASIS FOR RELIEF:

These valves are not provided with individual position indicators and thus the only reasonable means of verifying the close position is by performing leaktests--tests that are impractical to perform during normal operation. Also, meaningful stroke time measurements cannot be taken.

ALTERNATE TESTING:

These valves will be exercised every three months. Verification of the close position will be performed during each reactor refueling. Stroke times will not be measured.

RELIEF REQUEST NO. VR-33

SYSTEM:

CORE SPRAY

COMPONENTS:CV-2118
CV-2138CATEGORY:

C

FUNCTIONS:

These check valves provide a flowpath for core spray to the reactor vessel and prevent backflow from the reactor vessel to the core spray system.

TEST REQUIREMENT:

Exercise check valves in the open and closed direction every three months (CT-CO, CT-CC).

BASIS FOR RELIEF:

These check valves are normally closed. To open the valves, the core spray pumps are operated at rated flow and discharged directly into the reactor vessel. This cannot be done during normal operation as these valves cannot be opened against normal reactor pressure. The air operators on these valves (used for testing only) have proven to be unreliable and a continuing source of nitrogen inleakage in the drywell. Thus, operating nitrogen is normally cut-off to the operator. Currently, an engineering evaluation is being conducted to determine if these operators should be replaced or removed. In the first case this would allow for testing of these valves during cold shutdown. In the event the operators are removed, these valves can only be tested during refueling.

ALTERNATE TESTING:

These valves will be exercised at each refueling outage by verifying that each division of core spray can deliver rated flow to the reactor vessel.

RELIEF REQUEST NO. VR-34

SYSTEM:

CONTAINMENT ATMOSPHERE DILUTION

COMPONENTS:

- | | |
|----------|----------|
| SV-4331A | SV-4333A |
| SV-4331B | SV-4333B |
| SV-4332A | SV-4334A |
| SV-4332B | SV-4334B |

CATEGORY:

A/B

FUNCTIONS:

These valves function to provide a flowpath into the containment in the event that containment dilution is required during an accident and serve as containment isolation valves.

TEST REQUIREMENT:

Evaluate stroke times in accordance with IWV-3413 (b).

BASIS FOR RELIEF:

It is impractical to apply the requirements of IWV-3413 (b) to valves with stroke times on the order of 1-2 seconds without installing sophisticated timing devices. Operator reaction times could easily vary by .5 seconds or more thereby invalidating the 50% criteria for increasing the surveillance frequency.

ALTERNATE TESTING:

Stroke times for these valves will be measured; however, the frequency of testing will be increased to once each month if an increase in measured stroke time of 100% or more from the previous test is observed and the stroke time is greater than 2 seconds.

DUANE ARNOLD ENERGY CENTER	Page 66 of 66
TITLE: INSERVICE TESTING PROGRAM	Date 12-23-83 Rev. 5

RELIEF REQUEST NO. VR-35

SYSTEM:

EMERGENCY SERVICE WATER (ESW)

COMPONENTS:

CV-1956 A
CV-1956 B

CATEGORY:

B

FUNCTIONS:

These valves open to provide a return path for ESW cooling water from the control building chillers.

TEST REQUIREMENT:

Stroke time shall be measured during exercise testing. (IWV-3413)

BASIS FOR RELIEF:

These valves are actuated by the starting logic of the associated emergency service water pump, with no individual control handswitch. Also, there are no position indicators for these valves. Thus, stroke time measurements are impractical.

ALTERNATE TESTING:

These valves will be exercised every three months. During this testing, valve operation will be observed. Based on visual observation, any erratic operation or excessively long stroke time will be cause for failure.

FOR INFORMATION
ONLY

APPENDIX A
PUMP TESTING PROGRAM

PREPARED BY : MPECH
PROGRAM : PRESTM

INSERVICE TESTING PROGRAM
LST CLASS 1, 2, 3 AND NC PUMPS
DUANE ARNOLD ENERGY CENTER

TOWA ELECTRIC LIGHT
AND POWER

PAGE 1
LST PROGRAM REVISION 905 12/23/83

INSERVICE TEST QUANTITIES

PUMP NUMBER	PUMP NAME	LST CLASS	PAID	PAID COOR	SPEED	INLET PRESS	DIFF PRESS	FLOW RATE	VIBRA	BEAR TEMP	TEST INTERVAL	REMARKS
1P-022A	RHRSW	3	M-146	B-8	NA	Y:PR-4	Y	Y	Y	Y	QUARTERLY	
1P-022B	RHRSW	3	M-146	B-8	NA	Y:PR-4	Y	Y	Y	Y	QUARTERLY	
1P-022C	RHRSW	3	M-146	B-8	NA	Y:PR-4	Y	Y	Y	Y	QUARTERLY	
1P-022D	RHRSW	3	M-146	B-8	NA	Y:PR-4	Y	Y	Y	Y	QUARTERLY	
1P-044A	DFU	NC	M-132	A-2	NA	Y:PR-4	Y:PR-6	Y:PR-6	N:PR-1	N:PR-1	QUARTERLY	NOTE-001
1P-044B	DFU	NC	M-132	A-3	NA	Y:PR-4	Y:PR-6	Y:PR-6	N:PR-1	N:PR-1	QUARTERLY	NOTE-001
1P-099A	ESW	3	M-146	B-7	NA	Y:PR-4	Y	Y	Y	N:PR-2	QUARTERLY	
1P-099B	ESW	3	M-146	B-6	NA	Y:PR-4	Y	Y	Y	N:PR-2	QUARTERLY	
1P-112A	SCREEN	NC	M-129	C-7	NA	Y:PR-9	Y:PR-9	Y:PR-9	Y:PR-9	Y:PR-9	QUARTERLY	
1P-112B	SCREEN	NC	M-129	C-3	NA	Y:PR-9	Y:PR-9	Y:PR-9	Y:PR-9	Y:PR-9	QUARTERLY	
1P-117A	RW	NC	M-129	D-7	NA	Y:PR-4	Y:PR-5	Y:PR-5	Y	Y	QUARTERLY	
1P-117B	RW	NC	M-129	D-4	NA	Y:PR-4	Y:PR-5	Y:PR-5	Y	Y	QUARTERLY	
1P-117C	RW	NC	M-129	D-6	NA	Y:PR-4	Y:PR-5	Y:PR-5	Y	Y	QUARTERLY	
1P-117D	RW	NC	M-129	D-3	NA	Y:PR-4	Y:PR-5	Y:PR-5	Y	Y	QUARTERLY	
1P-211A	CS	2	M-121	C-3	NA	Y	Y:PR-5	Y:PR-5	Y	Y	QUARTERLY	
1P-211B	CS	2	M-121	C-4	NA	Y	Y:PR-5	Y:PR-5	Y	Y	QUARTERLY	
1P-216	HPCT	2	M-123	D-2	Y	Y	Y:PR-5	Y:PR-5	N:PR-3	N:PR-3	QUARTERLY	
1P-216	RCIC	2	M-125	D-4	Y	Y	Y:PR-5	Y:PR-5	N:PR-3	N:PR-3	QUARTERLY	
1P-227A	RHK	2	B-120	B-3	NA	Y	Y:PR-5	Y:PR-5	Y	Y	QUARTERLY	

PREPARED BY : NUTECH
PROGRAM : PRISM

INSERVICE TESTING PROGRAM
IST CLASS 1, 2, 3 AND NC PUMPS
DIANE ARNOLD ENERGY CENTER

IOWA ELECTRIC LIGHT
AND POWER

PAGE 2
IST PROGRAM REVISION 005 12/23/83

INSERVICE TEST QUANTITIES												
PUMP NUMBER	PUMP NAME	IST CLASS	PAID	PAID CODE	SPEED	INLET PRESS	DIFF PRESS	FLOW RATE	VIBRA	BEAR TEMP	TEST INTERVAL	REMARKS
1P-229B	RHR	2	M-119	B-7	NA	Y	Y:FR-5	Y:FR-5	Y	Y	QUARTERLY	
1P-229C	KHR	2	M-120	B-2	NA	Y	Y:FR-5	Y:FR-5	Y	Y	QUARTERLY	
1P-229D	RHR	2	M-119	B-8	NA	Y	Y:FR-5	Y:FR-5	Y	Y	QUARTERLY	
1P-239A	SLC	2	M-126	D-5	NA	Y	Y	Y	Y	Y	QUARTERLY	
1P-239B	SLC	2	M-126	C-5	NA	Y	Y	Y	Y	Y	QUARTERLY	

PREPARED BY : NUTECH
PROGRAM : PRISM

INSERVICE TESTING PROGRAM
ISI CLASS 1, 2, 3, AND NC VALVES
DUANE ARNOLD ENERGY CENTER

IOWA ELECTRIC LIGHT
AND POWER

PAGE : 3
ISI PROGRAM REVISION : 005 , 12/23/83

PUMP IST PROGRAM REMARKS

NOTE 001: Although the diesel fuel oil transfer pumps (1P-44A & B) are included in the program, they do not strictly fall within the jurisdiction of the ASME B & PV Code, Section XI. (Reference ASME response to WPPSS inquiry, File no. BC 77-666/NI 77-371 dated 1/8/79) See Relief Request No. PR-10 for further discussion of this issue.

APPENDIX B
VALVE TESTING PROGRAM

IN SERVICE TESTING PROGRAM

LSI CLASS 1, 2, 3, AND MC VALVES
SHAWNEE AFHOLD ENERGY CENTER

PREPARED BY: MITECH
PROGRAM: FRISIA

PALD C53-1-7 REVISION 00
SYSTEM: NEUTRON MONITORING

IST PROGRAM REVISION: 005, 12/23/83

PAGE: 1

LOWA ELECTRIC LIGHT
AND POWER

VALVE NUMBER	FALD COOR	IST CLASS	VALVE CAT	VALVE SIZE	VALVE TYPE	ACTUATOR TYPE	NORMAL POSITION	TEST	TEST FREQ	TEST	MAXIMUM STROKE TIME	MAXIMUM LEAKAGE	RELIEF REQUEST	REMARKS
TIP-BAL A	---	MC	A	-	BAL	SO	C	AT-1 BTC FIT	RR OP 2Y		005	NA	VR-2	
TIP-BAL B	---	MC	A	-	BAL	SO	C	AT-1 BTC FIT	RR OP 2Y		005	NA	VR-2	
TIP-BAL C	---	MC	A	-	BAL	SO	C	AT-1 BTC FIT	RR OP 2Y		005	NA	VR-2	
TIP-CK	---	MC	A/C	-	CK	SA	C	AT-1 CT-CC	RR OP RN			NA	VR-31	
TIP-3HA	---	MC	D	-	SH	EXP	0	DT	RR					
TIP-3HE	---	MC	D	-	SH	EXP	0	DT	RR					
TIP-3HL	---	MC	D	-	SH	EXP	0	DT	RR					

1000 ELECTRIC LIGHT
AND FOREK

INSERVICE TESTING PROGRAM

PREPARED BY : NUTECH
PROGRAM : TRISTM

1ST CLASS 1, 2, 3, AND NC VALVES
DUANE ARNOLD ENERGY CENTER

PAID M-109 REVISION 21 PAGE : 2
SYSTEM : CONDENSATE & DEMINERALIZED WATER 1ST PROGRAM REVISION : 005 / 12/23/83

VALVE NUMBER	PAID CODE	1ST CLASS	VALVE CAT	VALVE SIZE	VALVE TYPE	ACTUATOR TYPE	NORMAL POSITION	TEST FREQ	TEST FREQ	MAXIMUM STROKE TIME	MAXIMUM LEAKAGE	RELIEF REQUEST	REMARKS
M-09-055	G-2	NC	A	1	GA	M	C/LC	AT-1	RR		NA		
M-09-111	G-2	NC	A	1	GA	M	C/LC	AT-1	RR		NA		VR-29

IN-SERVICE TESTING PROGRAM
 IOWA ELECTRIC LIGHT
 AND POWER

PREPARED BY : NUTECH
 PROGRAM : PRISM

1ST CLASS 1, 2, 3, AND NC VALVES
 DUANE ARNOLD ENERGY CENTER

P&ID : A-112 REVISION 12 PAGE : 3
 SYSTEM : REACTOR BUILDING COOLING WATER 1ST PROGRAM REVISION : 005 , 12/23/83

VALVE NUMBER	P&ID COOR	1ST CLASS	VALVE CAT	VALVE SIZE	VALVE TYPE	ACTUATOR TYPE	NORMAL POSITION	TEST	TEST FREQ	MAXIMUM STROKE TIME	MAXIMUM LEAKAGE	RELIEF REQUEST	REMARKS
00-0001A	E-3	NC	A	4	GA	M0	0	AT-1 BIC PIT	RR CS 2Y	0.20	NA		
00-0001B	F-3	NC	A	4	GA	M0	0	AT-1 BIC PIT	RR CS 2Y	0.20	NA		

IOWA ELECTRIC LIGHT AND POWER

INSERVICE TESTING PROGRAM

PREPARED BY : MUTECH
PROGRAM : FRISIM

1ST CLASS 1, 2, 3, AND MC VALVES
DUANE ARNOLD ENERGY CENTER

PAGE : 4
1ST PROGRAM REVISION : 005 , 12/23/83

PAID N-113 REVISION 17
SYSTEM : RHR & EMERGENCY SERVICE WATER

VALVE NUMBER	PAID CODE	1ST CLASS	VALVE CAT	VALVE SIZE	VALVE TYPE	ACTUATOR TYPE	NORMAL POSITION	TEST	TEST FREQ	MAXIMUM STROKE TIME	RELIEF REQUEST	REMARKS
CV-1956A	H-3	3	B	4	GA	AU	C/F0	BTD FST	0P 0P	005	VR-35 VR-17	
CV-1956B	H-2	3	B	4	GA	AU	C/F0	BTD FST	0P 0P	005	VR-35 VR-17	
CV-2080	G-5	3	B	6	GL	AU	C/F0	BTD FST PTI	0P 0P 2Y	005	VR-17	
CV-2081	G-5	3	B	6	GL	AU	C/F0	BTD FST PTI	0P 0P 2Y	005	VR-17	
MO-1943A	G-B	3	B	12	GA	MO	C/KL	BTC PTI	0P 2Y	072		
MO-1943B	G-B	3	B	12	GA	MO	C/KL	BTC PTI	0P 2Y	072		
MO-2057A	H-4	3	B	4	GA	MO	0	BTC PTI	0P 2Y	081		
MO-2057B	H-3	3	B	4	GA	MO	0	BTC PTI	0P 2Y	081		
MO-2077	H-3	3	B	4	GA	MO	0	BTC PTI	0P 2Y	081		
MO-2078	H-2	3	B	4	GA	MO	0	BTC PTI	0P 2Y	081		
FSV-1988	E-7	3	B/C	.75	KV	SA	C	C1-SF	5Y			
FSV-2068	E-6	3	B/C	.75	KV	SA	C	C1-SF	5Y			

INSERVICE TESTING PROGRAM

PREPARED BY : NUITECH
 PROGRAM : FRTSM

10MA ELECTRIC LIGHT
 AND POWER

1ST CLASS 1, 2, 3, AND NC VALVES
 DUANE ARNOLD ENERGY CENTER

PAGE : 5

1ST PROGRAM REVISION : 005 , 12/23/83

REVISION 17

VALVE NUMBER	F&ID CORR	1ST CLASS	VALVE CAT	VALVE SIZE	VALVE TYPE	ACTUATOR TYPE	NORMAL POSITION	TEST	TEST FREQ	MAXIMUM STROKE TIME	MAXIMUM LEAKAGE	RELIEF REQUEST	REMARKS
5V-1956A	H-3	NC	B	-	3MY	SO	NE	BTD	OP	NA		VR-2	
5V-1956B	H-2	NC	B	-	3MY	SO	NE	BTD	OP	NA		VR-2	
5V-2000	G-5	NC	B	-	3MY	SO	NE	BTD	OP	NA		VR-2	
5V-2001	G-5	NC	B	-	3MY	SO	NE	BTD	OP	NA		VR-2	

INSERVICE TESTING PROGRAM

PREPARED BY : NUTECH
PROGRAM : FRISH

IST CLASS 1, 2, 3, AND NC VALVES
DUANE ARNOLD ENERGY CENTER

10MA ELECTRIC LIGHT
AND POWER

PAID M-114 REVISION 15 PAGE 6
SYSTEM : NUCLEAR BOILER IST PROGRAM REVISION 005, 12/23/83

VALVE NUMBER	PAID CODE	IST CLASS	VALVE CAT	VALVE SIZE	VALVE TYPE	ACTUATOR TYPE	NORMAL POSITION	TEST FST	TEST FREQ	MAXIMUM STROKE TIME	MAXIMUM LEAKAGE	RELIEF REQUEST	REMARKS
AP-4412A	G-3	NC	B	-	4MY	AF	NE	BTD FST	OP	NA		VR-2 VR-17	
AP-4412B	G-3	NC	B	-	4MY	AF	NE	BTD FST	OP	NA		VR-2 VR-17	
AP-4413A	G-1	NC	B	-	4MY	AF	NE	BTD FST	OP	NA		VR-2 VR-17	
AP-4413B	G-1	NC	B	-	4MY	AF	NE	BTD FST	OP	NA		VR-2 VR-17	
AP-4415A	---	NC	B	-	4MY	AF	NE	BTD FST	OP	NA		VR-2 VR-17	
AP-4415B	---	NC	B	-	4MY	AF	NE	BTD FST	OP	NA		VR-2 VR-17	
AP-4416A	---	NC	B	-	4MY	AF	NE	BTD FST	OP	NA		VR-2 VR-17	
AP-4416B	---	NC	B	-	4MY	AF	NE	BTD FST	OP	NA		VR-2 VR-17	
AP-4418A	---	NC	B	-	4MY	AF	NE	BTD FST	OP	NA		VR-2 VR-17	
AP-4418B	---	NC	B	-	4MY	AF	NE	BTD FST	OP	NA		VR-2 VR-17	
AP-4419A	---	NC	B	-	4MY	AF	NE	BTD FST	OP	NA		VR-2 VR-17	
AP-4419B	---	NC	B	-	4MY	AF	NE	BTD FST	OP	NA		VR-2 VR-17	

INSERVICE TESTING PROGRAM

IOWA ELECTRIC LIGHT AND POWER

1ST CLASS 1, 2, 3, AND NC VALVES
DUANE ARNOLD ENERGY CENTER

PREPARED BY : NUTECH
PROGRAM : PRISM

FAID : M-114 REVISION 15
SYSTEM : NUCLEAR BOILER

1ST PROGRAM REVISION : 005 , 12/23/83

PAGE : 7

VALVE NUMBER	FAID CUR	1ST CLASS	VALVE CAT	VALVE SIZE	VALVE TYPE	ACTUATOR TYPE	NORMAL POSITION	TEST	TEST FREQ	MAXIMUM STROKE TIME	MAXIMUM LEAKAGE	RELIEF REQUEST	REMARKS
AF-4420A	---	NC	B	-	4MY	AP	NE	BTD FST	OP OP	NA		VR-2 VR-17	
AF-4420B	---	NC	B	-	4MY	AP	NE	BTD FST	OP OP	NA		VR-2 VR-17	
AF-4421A	---	NC	B	-	4MY	AP	NE	BTD FST	OP OP	NA		VR-2 VR-17	
AF-4421B	---	NC	B	-	4MY	AP	NE	BTD FST	OP OP	NA		VR-2 VR-17	
CV-4432	C-7	1	A	20	GL	A0	0/FC	AT-1 BTC FST FIT	RR OP OP 2Y	005	NA		VR-17
CV-4433	E-2	1	A	20	GL	A0	0/FC	AT-1 BTC FST FIT	RR OP OP 2Y	005	NA		VR-17
CV-4435	C-7	1	A	20	GL	A0	0/FC	AT-1 BTC FST FIT	RR OP OP 2Y	005	NA		VR-17
CV-4436	C-8	1	A	20	GL	A0	0/FC	AT-1 BTC FST FIT	RR OP OP 2Y	005	NA		VR-17
CV-4438	C-3	1	A	20	GL	A0	0/FC	AT-1 BTC FST FIT	RR OP OP 2Y	005	NA		VR-17

INSERVICE TESTING PROGRAM

PREPARED BY : MUTECH
PROGRAM : PRISM

TEST CLASS 1, 2, 3, AND NC VALVES
DUANE ARNOLD ENERGY CENTER

TOWA ELECTRIC LIGHT
AND POWER

FAID M-114 REVISION 15
SYSTEM : NUCLEAR BOILER

TEST PROGRAM REVISION : 005 , 12/23/83

PAGE : 8

VALVE NUMBER	FAID CORR	TEST CLASS	VALVE CAT	VALVE SIZE	VALVE TYPE	ACTUATOR TYPE	NORMAL POSITION	TEST POSITION	TEST	TEST FREQ	MAXIMUM STROKE TIME	MAXIMUM LEAKAGE	RELIEF REQUEST	REMARKS
CV-4419	C-2	1	A	20	GL	AO	O/FC	AT-1 BIC FST FIT	RR OP OP 2Y	005	NA		VR-17	
CV-4420	E-7	1	A	20	GL	AO	O/FC	AT-1 BIC FST FIT	RR OP OP 2Y	005	NA		VR-17	
CV-4421	E-B	1	A	20	GL	AO	O/FC	AT-1 BIC FST FIT	RR OP OP 2Y	005	NA		VR-17	
CV-4428	H-6	1	B	.5	GL	AO	C	BIC FIT	CS 2Y	060				
CV-4429	H-7	1	B	.5	GL	AO	C	BIC FIT	CS 2Y	060				
CV-4425	H-3	1	A	3	GA	MO	C	AT-1 BIC FIT	RR OP 2Y	015	NA		VR-29	
CV-4424	H-5	1	A	3	GA	MO	I	AT-1 BIC FIT	RR OP 2Y	015	NA			
CV-4441	H-5	1	A/C	16	STE	SAB	O/KI	AT-1 BIC CI-CC FIT	RR CS CS 2Y	053	NA			
CV-4442	H-7	1	A/C	16	SUR	SAB	O/KI	AT-1 BIC CI-CC FIT	RR CS CS 2Y	053	NA			

CONSERVATIVE TESTING PROGRAM

PREPARED BY: NUTECH
PROGRAM: PRISM

IST CLASS 1, 2, 3, AND NC VALVES
DUANE ARKOLD ENERGY CENTER

IOWA ELECTRIC LIGHT
AND POWER

PAID M-114 REVISION 15 PAGE 9
SYSTEM: NUCLEAR BOILER IST PROGRAM REVISION: 005, 12/23/83

VALVE NUMBER	PAID CHR	IST CLASS	VALVE CAT	VALVE SIZE	VALVE TYPE	ACTUATOR TYPE	NORMAL POSITION	TEST	TEST FREQ	MAXIMUM LEAKAGE	RELIEF REQUEST	REMARKS
F5V-4400	E-5	1	B/C	6	KV	SAP	C	BTD CT-SP	SP SP	NA	VR-6	
F5V-4401	E-4	1	B/C	6	KV	SAP	C	BTD CT-SP	SP SP	NA	VR-6	
F5V-4402	C-6	1	B/C	6	KV	SAP	C	BTD CT-SP	SP SP	NA	VR-6	
F5V-4403	C-6	1	B/C	6	SV	SA	C	CT-SP	SP			
F5V-4404	C-5	1	B/C	6	SV	SA	C	CT-SP	SP			
F5V-4405	C-4	1	B/C	6	KV	SAP	C	BTD CT-SP	SP SP	NA	VR-6	
F5V-4406	E-6	1	B/C	6	KV	SAP	C	BTD CT-SP	SP SP	NA	VR-6	
F5V-4407	E-6	1	B/C	6	KV	SAP	C	BTD CT-SP	SP SP	NA	VR-6	
F5V-4439A	R-4	3	B/C	6	KV	SA	C	CT-CC CT-CC CT-SP	5Y 5Y 5Y		VR-7 VR-7 VR-7	
F5V-4439B	R-4	3	B/C	6	KV	SA	C	CT-CC CT-CC CT-SP	5Y 5Y 5Y		VR-7 VR-7 VR-7	
F5V-4439C	R-5	3	B/C	6	KV	SA	C	CT-CC CT-CC CT-SP	5Y 5Y 5Y		VR-7 VR-7 VR-7	
F5V-4439D	R-4	3	B/C	6	KV	SA	C	CT-CC CT-CC CT-SP	5Y 5Y 5Y		VR-7 VR-7 VR-7	

OWA ELECTRIC LIGHT
AND POWER

INSERVICE TESTING PROGRAM

1ST CLASS 1, 2, 3, AND NC VALVES
OHARE ARMORED ENERGY CENTER

PREPARED BY: MUTECH
PROGRAM: FRESIM

PAGE: 10
1ST PROGRAM REVISION: 005, 12/23/83

PAID SYSTEM: A-114 REVISION 15
NUCLEAR BOILER

VALVE NUMBER	FAID CODE	1ST CLASS	VALVE CAT	VALVE SIZE	VALVE TYPE	ACTUATOR TYPE	NORMAL POSITION	TEST	TEST FREQ	MAXIMUM LEAKAGE	RELIEF REQUEST	REMARKS
FV-4439E	A-5	3	B/C	6	KV	SA	C	CI-CC	5Y		VR-7	
								CI-CD	5Y		VR-7	
								CI-SP	5Y		VR-7	
FV-4439F	A-4	3	B/C	6	KV	SA	C	CI-CC	5Y		VR-7	
								CI-CD	5Y		VR-7	
								CI-SP	5Y		VR-7	
SV-4400	E-5	NC	B	-	30Y	SO	ND	BTE	SF	NA	VR-6	
SV-4401	E-4	NC	B	-	30Y	SO	ND	BTE	SF	NA	VR-6	
SV-4402	C-6	NC	B	-	30Y	SO	ND	BTE	SF	NA	VR-6	
SV-4405	C-4	NC	B	-	30Y	SO	ND	BTE	SF	NA	VR-6	
SV-4406	E-6	NC	B	-	30Y	SO	ND	BTE	SF	NA	VR-6	
SV-4407	E-6	NC	B	-	30Y	SO	ND	BTE	SF	NA	VR-6	
SV-4412A	G-8	NC	B	-	30Y	SO	ME	BTD	DF	NA	VR-2	
SV-4412B	G-8	NC	B	-	30Y	SO	ME	BTD	DF	NA	VR-2	
SV-4415A	F-2	NC	B	-	30Y	SO	ME	BTD	DF	NA	VR-2	
SV-4415B	F-2	NC	B	-	30Y	SO	ME	BTD	DF	NA	VR-2	
SV-4415C	G-8	NC	B	-	30Y	SO	ME	BTD	DF	NA	VR-2	
SV-4416A	G-8	NC	B	-	30Y	SO	ME	BTD	DF	NA	VR-2	
SV-4416B	G-8	NC	B	-	30Y	SO	ME	BTD	DF	NA	VR-2	

INSERVICE TESTING PROGRAM
 IOWA ELECTRIC LIGHT
 AND POWER

PREPARED BY : NUITECH
 PROGRAM : FRISIM
 IOT CLASS 1, 2, 3, AND NC VALVES
 DUANE ARNOLD ENERGY CENTER

F&ID M-114 REVISION 15
 SYSTEM : NUCLEAR BOILER

TEST PROGRAM REVISION : 005, 12/23/83
 PAGE : 11

VALVE NUMBER	F&ID COOR	IST CLASS	VALVE CAT	VALVE SIZE	VALVE TYPE	ACTUATOR TYPE	NORMAL POSITION	TEST	TEST FREQ	MAXIMUM STROKE TIME	MAXIMUM LEAKAGE	RELIEF REQUEST	REMARKS
SV-4418A	G-B	NC	B	-	3MY	SO	NE	BTD	OP	NA		VR-2	
SV-4418B	G-B	NC	B	-	3MY	SO	NE	BTD	OP	NA		VR-2	
SV-4419A	G-B	NC	B	-	3MY	SO	NE	BTD	OP	NA		VR-2	
SV-4419B	G-B	NC	B	-	3MY	SO	NE	BTD	OP	NA		VR-2	
SV-4420A	G-B	NC	B	-	3MY	SO	NE	BTD	OP	NA		VR-2	
SV-4420B	G-B	NC	B	-	3MY	SO	NE	BTD	OP	NA		VR-2	
SV-4421A	G-B	NC	B	-	3MY	SO	NE	BTD	OP	NA		VR-2	
SV-4421B	G-B	NC	B	-	3MY	SO	NE	BTD	OP	NA		VR-2	
SV-4422B	H-6	NC	B	-	3MY	SO	ND	BTD	CS	NA			
SV-4429	H-7	NC	B	-	3MY	SO	ND	BTD	CS	NA			
SV-44-001	B-6	1	A/C	16	CK	SA	0	AT-1 CI-CC CI-CD	RR RR FR		NA		
SV-44-005	B-4	1	A/C	16	CK	SA	0	AT-1 CI-CC CI-CD	RR RR RR		NA		
SV-44-009	F-6	NC	C	2	CK	SA	C	CI-CC	RR			VR-19	
SV-44-014	O-6	NC	C	2	CK	SA	C	CI-CC	RR			VR-19	
SV-44-015	G-5	NC	C	2	CK	SA	C	CI-CC	RR			VR-19	
SV-44-016	O-5	NC	C	2	CK	SA	C	CI-CC	RR			VR-19	

IOWA ELECTRIC LIGHT AND POWER

INSERVICE TESTING PROGRAM

1ST CLASS 1, 2, 3, AND NC VALVES
DUANE ARNOLD ENERGY CENTER

PREPARED BY : MUTECH
PROGRAM : PRISM

PAID M-114 REVISION 15 1ST PROGRAM REVISION : 005 , 12/23/83 PAGE : 12

SYSTEM : NUCLEAR BOILER

VALVE NUMBER	PAID COOR	IST CLASS	VALVE CAT	VALVE SIZE	VALVE TYPE	ACTUATOR TYPE	NORMAL POSITION	TEST	TEST FREQ	MAXIMUM STROKE TIME	MAXIMUM LEAKAGE	RELIEF REQUEST	REMARKS
V-14-032	F-1	NC	C	.75	CK	SA	0	CT-CC	KK			VR-19	
V-14-100	G-B	NC	C	.75	CK	SA	0	CT-CC	KK			VR-19	
V-14-104	G-B	NC	C	.75	CK	SA	0	CT-CC	KK			VR-19	
V-14-108	G-B	NC	C	.75	CK	SA	0	CT-CC	KK			VR-19	
V-14-112	G-B	NC	C	.75	CK	SA	0	CT-CC	KK			VR-19	
V-14-116	G-B	NC	C	.75	CK	SA	0	CT-CC	KK			VR-19	
V-14-120	G-B	NC	C	.75	CK	SA	0	CT-CC	KK			VR-19	
V-14-124	G-B	NC	C	.75	CK	SA	0	CT-CC	KK			VR-19	
XFV-4453A	E-3	1	A/C	1	XFC	SA	0	AT-2 CT-CC PII	KK RR ZY			VR-B	
XFV-4453B	D-3	1	A/C	1	XFC	SA	0	AT-2 CT-CC PII	KK RR ZY			VR-B	
XFV-4454A	E-3	1	A/C	1	XFC	SA	0	AT-2 CT-CC PII	KK RR ZY			VR-B	
XFV-4454B	D-3	1	A/C	1	XFC	SA	0	AT-2 CT-CC PII	KK RR ZY			VR-B	
XFV-4455A	E-3	1	A/C	1	XFC	SA	0	AT-2 CT-CC PII	KK RR ZY			VR-B	

PREPARED BY : NUTECH
PROGRAM : PRISM

INSERVICE TESTING PROGRAM

1ST CLASS 1, 2, 3, AND NC VALVES
DUANE ARNOLD ENERGY CENTER

IOWA ELECTRIC LIGHT
AND POWER

F&ID M-114 REVISION 15
SYSTEM : NUCLEAR BOILER

1ST PROGRAM REVISION : 005 , 12/23/83

PAGE : 13

VALVE NUMBER	F&ID CORR	1ST CLASS	VALVE CAT	VALVE SIZE	VALVE TYPE	ACTUATOR TYPE	NORMAL POSITION	TEST POSITION	TEST FREQ	TEST FREQ	MAXIMUM STROKE TIME	MAXIMUM LEAKAGE	RELIEF REQUEST	REMARKS
4455B	C-3	1	A/C	1	XFC	SA	0	AT-2 CT-CC PII	RR RR 2Y				VR-0	
4456A	C-3	1	A/C	1	XFC	SA	0	AT-2 CT-CC PII	RR RR 2Y				VR-0	
4456B	C-3	1	A/C	1	XFC	SA	0	AT-2 CT-CC PII	RR RR 2Y				VR-0	
4457A	E-7	1	A/C	1	XFC	SA	0	AT-2 CT-CC PII	RR RR 2Y				VR-0	
4457B	D-7	1	A/C	1	XFC	SA	0	AT-2 CT-CC PII	RR RR 2Y				VR-0	
4458A	E-7	1	A/C	1	XFC	SA	0	AT-2 CT-CC PII	RR RR 2Y				VR-0	
4458B	D-7	1	A/C	1	XFC	SA	0	AT-2 CT-CC PII	RR RR 2Y				VR-0	
4459A	C-7	1	A/C	1	XFC	SA	0	AT-2 CT-CC PII	RR RR 2Y				VR-0	
4459B	C-7	1	A/C	1	XFC	SA	0	AT-2 CT-CC PII	RR RR 2Y				VR-0	

INSERVICE TESTING PROGRAM

100A ELECTRIC LIGHT
AND POWER

1ST CLASS 1, 2, 3, AND NC VALVES
DIANE ARNOLD ENERGY CENTER

PREPARED BY : NUITECH
PROGRAM : PRISM

P&ID M-114 REVISION 15
SYSTEM : NUCLEAR BOILER

PAGE : 14
1ST PROGRAM REVISION : 005 , 12/23/83

VALVE NUMBER	P&ID CORR	IST CLASS	VALVE CAT	VALVE SIZE	VALVE TYPE	ACTUATOR TYPE	NORMAL POSITION	TEST POSITION	TEST FREQ	TEST FREQ	MAXIMUM STROKE TIME	MAXIMUM LEAKAGE	RELIEF REQUEST	REMARKS
4460A	C-7	1	A/C	1	XFC	SA	0	AT-2 CT-CC PIT	RR RR 2Y				VR-B	
4460B	C-7	1	A/C	1	XFC	SA	0	AT-2 CT-CC PIT	RR RR 2Y				VR-B	

PREPARED BY : NUTECH
PROGRAM : PRISM

INSERVICE TESTING PROGRAM

IOWA ELECTRIC LIGHT
AND POWER

IST CLASS 1, 2, 3, AND NC VALVES
DUANE ARNOLD ENERGY CENTER

F&ID M-115 REVISION 0 PAGE : 15
SYSTEM : REACTOR VESSEL INSTRUMENTATION IST PROGRAM REVISION : 005 , 12/23/83

VALVE NUMBER	F&ID COOR	IST CLASS	VALVE CAT	VALVE SIZE	VALVE TYPE	VALVE TYPE	ACTUATOR TYPE	NORMAL POSITION	TEST	TEST FREQ	MAXIMUM STROKE TIME	MAXIMUM LEAKAGE	RELIEF REQUEST	REMARKS
4V-4594A	D-3	2	A	1	BAL	SB	SB	C	AT-1 BIC FST	RR OP OP	005		VR-32 VR-17	
4V-4594B	D-3	2	A	1	BAL	SD	SD	C	AT-1 BIC FST	RR OP OP	005		VR-32 VR-17	
4V-4501A	E-3	1	A	1	XFC	SA	SA	0	AT-2 CT-CC PII	RR RR 2Y			VR-B	
4V-4501B	E-3	1	A	1	XFC	SA	SA	0	AT-2 CT-CC PII	RR RR 2Y			VR-B	
4V-4503	E-3	1	A	1	XFC	SA	SA	0	AT-2 CT-CC PII	RR RR 2Y			VR-B	
4V-4504	E-6	1	A	1	XFC	SA	SA	0	AT-2 CT-CC PII	RR RR 2Y			VR-B	
4V-4505	C-3	1	A	1	XFC	SA	SA	0	AT-2 CT-CC PII	RR RR 2Y			VR-B	
4V-4506	B-3	1	A	1	XFC	SA	SA	0	AT-2 CT-CC PII	RR RR 2Y			VR-B	
4V-4507	B-3	1	A	1	XFC	SA	SA	0	AT-2 CT-CC PII	RR RR 2Y			VR-B	

INSERVICE TESTING PROGRAM

1ST CLASS 1, 2, 3, AND NC VALVES
DIANE ARNOLD ENERGY CENTER

PREPARED BY : NUTECH
PROGRAM : PRISM

FAID M-115 REVISION 0 1ST PROGRAM REVISION : 005 , 12/23/83

PAGE : 16

COMA ELECTRIC LIGHT
AND POWER

SYSTEM : REACTOR VESSEL INSTRUMENTATION

VALVE NUMBER	FAID COOR	1ST CLASS	VALVE CAT	VALVE SIZE	VALVE TYPE	ACTUATOR TYPE	NORMAL POSITION	TEST POSITION	TEST FREQ	TEST FREQ	MAXIMUM STROKE TIME	MAXIMUM LEAKAGE	RELIEF REQUEST	REMARKS
XFV-450B	B-3	1	A	1	XFC	SA	0	AT-2 CT-CC PII	RR RR 2Y	RR RR 2Y			VR-B	
XFV-4510A	E-6	1	A	1	XFC	SA	0	AT-2 CT-CC PII	RR RR 2Y	RR RR 2Y			VR-B	
XFV-4510B	E-7	1	A	1	XFC	SA	0	AT-2 CT-CC PII	RR RR 2Y	RR RR 2Y			VR-B	
XFV-4511	B-3	1	A	1	XFC	SA	0	AT-2 CT-CC PII	RR RR 2Y	RR RR 2Y			VR-B	
XFV-4512	B-3	1	A	1	XFC	SA	0	AT-2 CT-CC PII	RR RR 2Y	RR RR 2Y			VR-B	
XFV-4513	B-3	1	A	1	XFC	SA	0	AT-2 CT-CC PII	RR RR 2Y	RR RR 2Y			VR-B	
XFV-4514	B-3	1	A	1	XFC	SA	0	AT-2 CT-CC PII	RR RR 2Y	RR RR 2Y			VR-B	
XFV-4515	B-3	1	A	1	XFC	SA	0	AT-2 CT-CC PII	RR RR 2Y	RR RR 2Y			VR-B	
XFV-4516	B-3	1	A	1	XFC	SA	0	AT-2 CT-CC PII	RR RR 2Y	RR RR 2Y			VR-B	

IOWA ELECTRIC LIGHT AND POWER

INSERVICE TESTING PROGRAM

PREPARED BY : MUTECH
PROGRAM : PRISM

1ST CLASS 1, 2, 3, AND MC VALVES
DUANE ARNOLD ENERGY CENTER

PAID M-115 REVISION 0 PAGE : 17
SYSTEM : REACTOR VESSEL INSTRUMENTATION 1ST PROGRAM REVISION : 005 , 12/23/83

VALVE NUMBER	FAID	1ST CLASS	VALVE CAT	VALVE SIZE	VALVE TYPE	ACTUATOR TYPE	NORMAL POSITION	TEST POSITION	TEST FREQ	MAXIMUM STROKE TIME	MAXIMUM LEAKAGE	RELIEF REQUEST	REMARKS
XFV-4518	D-6	1	A	1	XFC	SA	0	AT-2 CT-CC PI	RR RR 2Y			VR-0	
XFV-4519	D-3	1	A	1	XFC	SA	0	AT-2 CT-CC PI	RR RR 2Y			VR-0	
XFV-4528	D-6	1	A	1	XFC	SA	0	AT-2 CT-CC PI	RR RR 2Y			VR-0	
XFV-4562	E-3	1	A	1	XFC	SA	0	AT-2 CT-CC PI	RR RR 2Y			VR-0	
XFV-4578	F-6	1	A	1	XFC	SA	0	AT-2 CT-CC PI	RR RR 2Y			VR-0	
XFV-4579	F-6	1	A	1	XFC	SA	0	AT-2 CT-CC PI	RR RR 2Y			VR-0	
XFV-4580	F-6	1	A	1	XFC	SA	0	AT-2 CT-CC PI	RR RR 2Y			VR-0	
XFV-4581	E-6	1	A	1	XFC	SA	0	AT-2 CT-CC PI	RR RR 2Y			VR-0	
XFV-4582	E-6	1	A	1	XFC	SA	0	AT-2 CT-CC PI	RR RR 2Y			VR-0	

IOWA ELECTRIC LIGHT
AND POWER

INSERVICE TESTING PROGRAM

IST CLASS 1, 2, 3, AND NC VALVES
DUANE ARNOLD ENERGY CENTER

PREPARED BY : MDTCH
PROGRAM : PRISM

P&ID SYSTEM : M-115 REVISION 0
PAGE : 18

IST PROGRAM REVISION : 005, 12/23/83

MAXIMUM

STROKE

TIME

TEST FREQ

TEST POSITION

ACTUATOR TYPE

VALVE TYPE

VALVE SIZE

VALVE CAT

IST CLASS

P&ID COOR

VALVE NUMBER

RELIEF REQUIST

REMARKS

VALVE NUMBER	P&ID COOR	IST CLASS	VALVE CAT	VALVE SIZE	VALVE TYPE	ACTUATOR TYPE	NORMAL POSITION	TEST POSITION	TEST FREQ	TEST	TEST FREQ	MAXIMUM STROKE TIME	MAXIMUM LEAKAGE	RELIEF REQUIST	REMARKS
4583	E-6	1	A	1	XFC	SA	0	AI-2 CI-CC PII	RR RR 2Y	AI-2 CI-CC PII	RR RR 2Y			VR-B	
4584	D-6	1	A	1	XFC	SA	0	AI-2 CI-CC PII	RR RR 2Y	AI-2 CI-CC PII	RR RR 2Y			VR-B	
4585	D-6	1	A	1	XFC	SA	0	AI-2 CI-CC PII	RR RR 2Y	AI-2 CI-CC PII	RR RR 2Y			VR-B	
4586	F-3	1	A	1	XFC	SA	0	AI-2 CI-CC PII	RR RR 2Y	AI-2 CI-CC PII	RR RR 2Y			VR-B	
4587	F-3	1	A	1	XFC	SA	0	AI-2 CI-CC PII	RR RR 2Y	AI-2 CI-CC PII	RR RR 2Y			VR-B	
4588	F-3	1	A	1	XFC	SA	0	AI-2 CI-CC PII	RR RR 2Y	AI-2 CI-CC PII	RR RR 2Y			VR-B	
4589	E-3	1	A	1	XFC	SA	0	AI-2 CI-CC PII	RR RR 2Y	AI-2 CI-CC PII	RR RR 2Y			VR-B	
4590	D-3	1	A	1	XFC	SA	0	AI-2 CI-CC PII	RR RR 2Y	AI-2 CI-CC PII	RR RR 2Y			VR-B	
4591	D-3	1	A	1	XFC	SA	0	AI-2 CI-CC PII	RR RR 2Y	AI-2 CI-CC PII	RR RR 2Y			VR-B	

INSERVICE TESTING PROGRAM

PREPARED BY : NUTECH PROGRAM : PRISTH

IST CLASS 1, 2, 3, AND NC VALVES
DUANE ARNOLD ENERGY CENTER

IOWA ELECTRIC LIGHT AND POWER

F&ID SYSTEM : REACTOR RECIRCULATION

H-116 REVISION 12

IST PROGRAM REVISION : 005 , 12/23/83

VALVE NUMBER : F&ID CODE : IST CLASS : VALVE CAT : VALVE SIZE : VALVE TYPE : ACTUATOR TYPE : NORMAL POSITION : TEST : TEST FREQ : MAXIMUM STROKE TIME : MAXIMUM LEAKAGE : RELIEF REQUEST : REMARKS

CV-4639	F-6	1	A	.75	GL	AU	C	AT-1 BIC FIT	RR OF 2Y	005	NA	
CV-4640	F-6	1	A	.75	GL	AD	C	AT-1 BIC FIT	RR OF 2Y	005	NA	
MO-4627	C-2	1	B	22	GA	MO	0	BIC FIT	CS 2Y	036		
MO-4628	C-8	1	B	22	GA	MO	0	BIC FIT	CS 2Y	036		
MO-4639	C-3	1	B	4	GA	MO	C	BIC FIT	CS 2Y	036		
MO-4630	C-8	1	B	4	GA	MO	C	BIC FIT	CS 2Y	036		
SV-4639	F-6	NC	B	-	3MY	SO	ND	BID	OF	NA		VR-2
SV-4640	F-6	NC	B	-	3MY	SO	ND	BID	OF	NA		VR-2
SV-4637	A-5	1	A/C	1	XFC	SA	0	AT-2 CI-CC FIT	RR RR 2Y			VR-8
TV-4608	A-5	1	A/C	1	XFC	SA	0	AT-2 CI-CC FIT	RR RR 2Y			VR-8
TV-4611	A-5	1	A/C	1	XFC	SA	0	AT-2 CI-CC FIT	RR RR 2Y			VR-8

INMVA ELECTRIC LIGHT
AND FOWER

INSERVICE TESTING PROGRAM

IST CLASS 1, 2, 3, AND NC VALVES
DIANE ARNOLD ENERGY CENTER

PREPARED BY : MUECH
PROGRAM : FRISIH

P&ID H-116 REVISION 12 PAGE : 20
SYSTEM : REACTOR RECIRCULATION IST PROGRAM REVISION : 005 , 12/23/83

VALVE NUMBER	P&ID COOR	IST CLASS	VALVE CAT	VALVE SIZE	VALVE TYPE	ACTUATOR TYPE	NORMAL POSITION	TEST TEST	TEST FREQ	MAXIMUM STROKE TIME	MAXIMUM LEAKAGE	RELIEF REQUEST	REMARKS
XFV-4612	A-5	1	A/C	1	XFC	SA	0	AT-2 CI-CC PII	RR RR 2Y			VR-B	
XFV-4637	E-6	1	A/C	1	XFC	SA	0	AT-2 CI-CC PII	RR RR 2Y			VR-B	
XFV-4638	E-6	1	A/C	1	XFC	SA	0	AT-2 CI-CC PII	RR RR 2Y			VR-B	
XFV-4641A	H-7	1	A/C	1	XFC	SA	0	AT-2 CI-CC PII	RR RR 2Y			VR-B	
XFV-4641B	H-3	1	A/C	1	XFC	SA	0	AT-2 CI-CC PII	RR RR 2Y			VR-B	
XFV-4642A	G-7	1	A/C	1	XFC	SA	0	AT-2 CI-CC PII	RR RR 2Y			VR-B	
XFV-4642B	G-3	1	A/C	1	XFC	SA	0	AT-2 CI-CC PII	RR RR 2Y			VR-B	
XFV-4643A	G-7	1	A/C	1	XFC	SA	0	AT-2 CI-CC PII	RR RR 2Y			VR-B	
XFV-4643B	G-3	1	A/C	1	XFC	SA	0	AT-2 CI-CC PII	RR RR 2Y			VR-B	

PREPARED BY: MUTECH
PROGRAM: PRISM

UNSERVICE TESTING PROGRAM

1ST CLASS 1, 2, 3, AND MC VALVES
DUANE ARNOLD ENERGY CENTER

IOWA ELECTRIC LIGHT
AND POWER

P&ID M-116 REVISION 1.2
SYSTEM: REACTOR RECIRCULATION

PAGE: 21
1ST PROGRAM REVISION: 005, 12/23/83

VALVE NUMBER	P&ID COOR	1ST CLASS	VALVE CAT	VALVE SIZE	VALVE TYPE	ACTUATOR TYPE	NORMAL POSITION	TEST	TEST FREQ	MAXIMUM STROKE TIME	MAXIMUM LEAKAGE	RELIEF REQUEST	REMARKS
4V-4644A	G-7	1	A/C	1	XFC	SA	0	AI-2 CI-CC PII	RR RR 2Y			VR-B	
4V-4644B	G-3	1	A/C	1	XFC	SA	0	AI-2 CI-CC PII	RR RR 2Y			VR-B	
4V-4663	F-4	1	A/C	1	XFC	SA	0	AI-2 CI-CC PII	RR RR 2Y			VR-B	
4V-4664	F-4	1	A/C	1	XFC	SA	0	AI-2 CI-CC PII	RR RR 2Y			VR-B	
4V-4665	F-4	1	A/C	1	XFC	SA	0	AI-2 CI-CC PII	RR RR 2Y			VR-B	
4V-4666	F-4	1	A/C	1	XFC	SA	0	AI-2 CI-CC PII	RR RR 2Y			VR-B	
4V-4667	E-4	1	A/C	1	XFC	SA	0	AI-2 CI-CC PII	RR RR 2Y			VR-B	
4V-4668	E-4	1	A/C	1	XFC	SA	0	AI-2 CI-CC PII	RR RR 2Y			VR-B	
4V-4669	E-4	1	A/C	1	XFC	SA	0	AI-2 CI-CC PII	RR RR 2Y			VR-B	

IN SERVICE TESTING PROGRAM

PREPARED BY : NUTECH
 FROM : PRISM

ISI CLASS 1, 2, 3, AND NC VALVES
 DUANE ARNOLD ENERGY CENTER

TOMA ELECTRIC LIGHT
 AND POWER

P&ID M-116 REVISION 12
 SYSTEM : REACTOR RECIRCULATION

PAGE : 22
 IST PROGRAM REVISION : 005 , 12/23/83

VALVE NUMBER	P&ID COOR	IST CLASS	VALVE CAT	VALVE SIZE	VALVE TYPE	ACTUATOR TYPE	NORMAL POSITION	TEST	TEST FREQ	MAXIMUM STROKE TIME	MAXIMUM LEAKAGE	RELIEF REQUEST	REMARKS
XFV-4670	E-4	1	A/C	1	XFC	SA	0	AT-2 CI-CC PII	RR RR 2Y			VR-B	
XFV-4671	E-4	1	A/C	1	XFC	SA	0	AT-2 CI-CC PII	RR RR 2Y			VR-B	
XFV-4672	E-4	1	A/C	1	XFC	SA	0	AT-2 CI-CC PII	RR RR 2Y			VR-B	
XFV-4673	E-4	1	A/C	1	XFC	SA	0	AT-2 CI-CC PII	RR RR 2Y			VR-B	
XFV-4674	E-4	1	A/C	1	XFC	SA	0	AT-2 CI-CC PII	RR RR 2Y			VR-B	
XFV-4675	D-4	1	A/C	1	XFC	SA	0	AT-2 CI-CC PII	RR RR 2Y			VR-B	
XFV-4676	D-4	1	A/C	1	XFC	SA	0	AT-2 CI-CC PII	RR RR 2Y			VR-B	
XFV-4677	D-4	1	A/C	1	XFC	SA	0	AT-2 CI-CC PII	RR RR 2Y			VR-B	
XFV-4678	D-4	1	A/C	1	XFC	SA	0	AT-2 CI-CC PII	RR RR 2Y			VR-B	

IOWA ELECTRIC LIGHT
AND POWER

INSERVICE TESTING PROGRAM

PREPARED BY : MUTECH
PROGRAM : PRISM

1ST CLASS 1, 2, 3, AND MC VALVES
DUANE ARNOLD ENERGY CENTER

F&ID M-116 REVISION 12
SYSTEM : REACTOR RECIRCULATION

PAGE : 23

1ST PROGRAM REVISION : 005 , 12/23/83

VALVE NUMBER	F&ID	1ST CLASS	VALVE CAT	VALVE SIZE	VALVE TYPE	ACTUATOR TYPE	NORMAL POSITION	TEST	TEST FREQ	MAXIMUM STROKE TIME	MAXIMUM LEAKAGE	RELIEF REQUEST	REMARKS
XFV-4679	A-1	1	A/C	1	XFC	SA	0	AT-2 CT-CC PII	RR RR 2Y			VR-B	
XFV-4680	A-7	1	A/C	1	XFC	SA	0	AT-2 CT-CC PII	RR RR 2Y			VR-B	
XFV-4681	A-3	1	A/C	1	XFC	SA	0	AT-2 CT-CC PII	RR RR 2Y			VR-B	
XFV-4682	A-3	1	A/C	1	XFC	SA	0	AT-2 CT-CC PII	RR RR 2Y			VR-B	

INSERVICE TESTING PROGRAM

EDWA ELECTRIC LIGHT AND POWER

PREPARED BY : NUITECH PROGRAM : FRISIM

1ST CLASS 1, 2, 3, AND NC VALVES
DUANE ARNOLD ENERGY CENTER

PAID M-117 REVISION 17 1ST PROGRAM REVISION : 005 , 12/23/83 PAGE : 24

SYSTEM : CONTROL ROD DRIVE HYDRAULIC

VALVE NUMBER	PAID COOR	1ST CLASS	VALVE CAT	VALVE SIZE	VALVE TYPE	ACTUATOR TYPE	NORMAL POSITION	TEST AT-1 BIC PIT	TEST FREQ OP 2Y	MAXIMUM STROKE TIME	MAXIMUM LEAKAGE	RELIEF REQUEST	REMARKS
CV-1894A	A-5	1	A	1	GL	A0	0	AT-1 BIC PIT	RR OP 2Y	005	NA		
CV-1894B	A-5	1	A	1	GL	A0	0	AT-1 BIC PIT	RR OP 2Y	005	NA		
CV-1894A	A-5	NC	B	-	3MY	S0	NE	BTD	OP	NA			VR-2
CV-1894B	A-5	NC	B	-	3MY	S0	NE	BTD	OP	NA			VR-2
V-17-052	E-3	1	A/C	3	CK	SA	C	AT-1 CI-CC	RR		NA		VR-30
V-17-053	E-2	1	A/C	3	CK	SA	C	AT-1 CI-CC	RR		NA		VR-30
V-17-083	A-6	1	A/C	1	CK	SA	0	AT-1 CI-CC	RR		NA		VR-12
V-17-096	A-4	1	A/C	1	CK	SA	0	AT-1 CI-CC	RR		NA		VR-12

INSERVICE TESTING PROGRAM
 10MA ELECTRIC LIGHT
 AND POWER

PREPARED BY : NUITECH
 PROGRAM : PRISM
 1ST CLASS 1, 2, 3, AND NC VALVES
 DUANE ARNOLD ENERGY CENTER

PAGE : 25
 1ST PROGRAM REVISION : 005 , 12/23/83

PAID M-118 REVISION 08
 SYSTEM : CONTROL ROD DRIVE HYDRAULIC

VALVE NUMBER	PAID COOR	1ST CLASS	VALVE CAT	VALVE SIZE	VALVE TYPE	ACTUATOR TYPE	NORMAL POSITION	TEST	TEST FREQ	MAXIMUM STROKE TIME	MAXIMUM LEAKAGE	RELIEF REQUEST	REMARKS
CV-1849	D-7	1	B	.75	GA	A0	C/FD	BTD FST	SF	NA		VR-13 VR-17	NOTE-001
CV-1850	D-6	1	B	.75	GA	A0	C/FD	BTD FST	SF	NA		VR-13 VR-17	NOTE-001
CV-1859	G-4	1	B	1	GL	AG	O/FC	BTC FST FIT	CS CS 2Y	030		VR-17	
CV-1859A	G-4	1	B	1	GL	A0	O/FC	BTC FST FIT	CS CS 2Y	030		VR-17	
CV-1859B	G-4	1	B	1	GL	A0	O/FC	BTC FST FIT	CS CS 2Y	030		VR-17	
CV-1867	D-5	1	B	2	GL	A0	O/FC	BTC FST FIT	CS CS 2Y	032		VR-17	
CV-1867A	D-5	1	B	2	GL	A0	O/FC	BTC FST FIT	CS CS 2Y	032		VR-17	
CV-1867B	D-5	1	B	2	GL	A0	O/FC	BTC FST FIT	CS CS 2Y	032		VR-17	
SV-1851	C-7	1	B	.5	GA	S0	C/FC	BTC FST	SF SF	NA		VR-14 VR-17	NOTE-001
SV-1852	C-7	1	B	.75	GA	S0	C/FC	BTC FST	SF SF	NA		VR-14 VR-17	NOTE-001

IOWA ELECTRIC LIGHT
AND POWER

INSERVICE TESTING PROGRAM

PREPARED BY : NUTECH
PROGRAM : PRISM

IST CLASS 1, 2, 3, AND NC VALVES
DUANE ARNOLD ENERGY CENTER

PAGE : 26
IST PROGRAM REVISION : 005 , 12/23/83

FAID M-11B REVISION 08
SYSTEM : CONTROL ROD DRIVE HYDRAULIC

VALVE NUMBER	FAID COOR	IST CLASS	VALVE CAT	VALVE SIZE	VALVE TYPE	ACTUATOR TYPE	NORMAL POSITION	TEST	TEST FREQ	MAXIMUM STROKE TIME	MAXIMUM LEAKAGE	RELIEF REQUEST	REMARKS
SV-1853	C-7	1	B	.5	GA	SO	C/FC	BTC FST	SF SF	NA		VR-14 VR-17	NOTE-001
SV-1854	C-7	1	B	.75	GA	SO	C/FC	BTC FST	SF SF	NA		VR-14 VR-17	NOTE-001
SV-1855	E-6	NC	B	-	3MY	SO	NE	BTD	SF	NA		VR-13	
SV-1856	E-6	NC	B	-	3MY	SO	NE	BTD	SF	NA		VR-13	
SV-1868	D-4	NC	B	.25	3MY	SO	NE	BTD	SF	NA		VR-2	
SV-1869	D-4	NC	B	.25	3MY	SO	NE	BTD	OF	NA		VR-2	
SV-18-0118	B-8	1	C	.5	CK	SA	C	CT-CC	SF	NA		VR-13	NOTE-002
SV-18-0919	E-7	1	C	.5	CK	SA	0	CT-CC	SF	NA		VR-13	NOTE-003
SV-18-1453	B-8	1	C	.5	CK	SA	C	CT-CD	SF	NA		VR-13	NOTE-004

INOM ELECTRIC LIGHT
AND FUMER

INSERVICE TESTING PROGRAM

PREPARED BY : NUTECH
PROGRAM : PRISM

ISI CLASS 1, 2, 3, AND NC VALVES
DUANE ARNOLD ENERGY CENTER

PAID M-119 REVISION 16 PAGE : 27
SYSTEM : RESIDUAL HEAT REMOVAL IST PROGRAM REVISION : 005 , 12/23/83

VALVE NUMBER	PAID COOR	IST CLASS	VALVE CAT	VALVE SIZE	VALVE TYPE	ACTUATOR TYPE	NORMAL POSITION	TEST	TEST FREQ	MAXIMUM STROKE TIME	MAXIMUM LEAKAGE	RELIEF REQUEST	REMARKS
CV-1906	E-7	1	A/C	20	CK	SAT	C	AI-5 CI-CC CI-CD PIT	RR CS CS 2Y				
MD-1900	H-B	1	A	4	GA	MO	C	AI-1 AI-5 BIC PIT	RR RR CS 2Y	028	NA	VR-29	
MD-1901	H-7	1	A	4	GI	MO	C	AI-1 AI-5 BIC PIT	RR RR CS 2Y	016	NA		
MD-1902	G-7	2	B	19	GA	MO	C	BIC PIT	OF 2Y	014			
MD-1903	G-6	2	B	10	GI	MO	C/RI	BIC PIT	OF 2Y	014			
MD-1904	E-6	2	B	20	ANG	MO	0	BIO PIT	OF 2Y	037			
MD-1905A	E-6	1	A/B	20	GA	MO	C	AI-5 BIC BIO PIT	RR OF OF 2Y	037 037			
MD-1908	E-B	1	A	18	GA	MO	0	AI-1 AI-5 BIC PIT	RR RR CS 2Y	022	NA	VR-29	
MD-1909	E-B	1	A	18	GA	MO	C	AI-1 AI-5 BIC PIT	RR RR CS 2Y	022	NA		

INSERVICE TESTING PROGRAM

PREPARED BY : MUTECH

PROGRAM : PRISM

IST CLASS 1, 2, 3, AND MC VALVES
DIANE ARNOLD ENERGY CENTER

FAID M-119 REVISION 16
SYSTEM : RESIDUAL HEAT REMOVAL

IST PROGRAM REVISION : 005 , 12/23/83

PAGE : 28

VALVE NUMBER	FAID COOR	IST CLASS	VALVE CAT	VALVE SIZE	VALVE TYPE	ACTUATOR TYPE	NORMAL POSITION	TEST	TEST FREQ	MAXIMUM STROKE TIME	MAXIMUM LEAKAGE	RELIEF REQUEST	REMARKS
MO-1912	C-7	2	B	18	GA	MO	C	BTC PIT	0P 2Y	084			
MO-1913	C-7	2	B	18	GA	MO	O/KL	BTC BTD PIT	0P 2Y	084			
MO-1920	C-8	2	B	18	GA	MO	C	BTC PIT	0P 2Y	084			
MO-1921	C-7	2	B	18	GA	MO	O/KL	BTC BTD PIT	0P 2Y	084			
MO-1932	F-5	2	B	12	GA	MO	C/KL	BTC BTD PIT	0P 2Y	083			
MO-1933	F-5	2	B	4	GL	MO	C	BTC PIT	0P 2Y	009			
MO-1934	F-5	2	B	12	GL	MO	C	BTC BTD PIT	0P 2Y	041			
MO-1935	C-5	2	B	3	GA	MO	0	BTC BTD PIT	0P 2Y	019			
MO-1936	D-6	2	B	4	GL	MO	C	BTC PIT	0P 2Y	006			
MO-1937	0-6	2	B	4	GA	MO	C	BTC PIT	0P 2Y	019			
MO-1939	D-4	2	B	12	GA	MO	O/KL	BTC BTD PIT	0P 2Y	080			

INSERVICE TESTING PROGRAM
 IOWA ELECTRIC LIGHT
 AND POWER

PREPARED BY : NUTECH
 PROGRAM : PRISM
 ICI CLASS 1, 2, 3, AND NC VALVES
 DIANE ARNOLD ENERGY CENTER

PAID M-119 REVISION 16
 SYSTEM : RESIDUAL HEAT REMOVAL

IST PROGRAM REVISION : 005 , 12/23/83

PAGE : 29

VALVE NUMBER	PAID COOR	IST CLASS	VALVE CAT	VALVE SIZE	VALVE TYPE	ACTUATOR TYPE	NORMAL POSITION	TEST	TEST FREQ	MAXIMUM STROKE TIME	MAXIMUM LEAKAGE	RELIEF REQUEST	REMARKS
00-1940	E-4	2	B	1B	GL	M0	0	BTC BTD PIT	0P 0P 2Y	000 060			
00-1941	E-3	2	B	1B	GA	M0	0/KL	BTC BTD PIT	0P 0P 2Y	080 080			
00-1949A	D-4	2	B	1	GL	M0	C	BTC PIT	0P 2Y	018			
00-1949B	D-4	2	B	1	GL	M0	C	BTC PIT	0P 2Y	018			
00-1967	E-2	2	B	4	GA	M0	C	BTC BTD PIT	0P 0P 2Y	030 030			
00-1970	E-3	2	B	4	GA	M0	C	BTC PIT	0P 2Y	017			
00-1989	D-7	2	B	24	GA	M0	0/KL	BTC BTD PIT	0P 0P 2Y	140 140			
F5V-1911	D-8	2	B/C	1	RV	SA	C	CT-SF	5Y				
F5V-1952	D-4	2	B/C	4	RV	SA	C	CT-SF	5Y				
V-19-001	A-7	2	C	12	CK	SA	C	CT-CC CT-CO	0P 0P				
V-19-003	A-5	2	C	12	CK	SA	C	CT-CC CT-CO	0P 0P				
V-19-014	A-8	2	C	3	CK	SA	C	CT-CC CT-CO	0P 0P				

PREPARED BY : MUTECH
PROGRAM : PRISM

INSERVICE TESTING PROGRAM

IOWA ELECTRIC LIGHT
AND POWER

1ST CLASS 1, 2, 3, AND NC VALVES
DIANE ARNOLD ENERGY CENTER

P&ID M-119 REVISION 16 PAGE : 30
SYSTEM : RESIDUAL HEAT REMOVAL 1ST PROGRAM REVISION : 005 , 12/23/33

VALVE NUMBER	P&ID COOR	1ST CLASS	VALVE CAT	VALVE SIZE	VALVE TYPE	VALVE TYPE	ACTUATOR TYPE	NORMAL POSITION	TEST CT-CC	TEST CT-CD	TEST FREQ	MAXIMUM STROKE TIME	MAXIMUM LEAKAGE	RELIEF REQUEST	REMARKS
V-19-016	B-5	2	C	3	CK	CK	SA	C	CT-CC	CT-CD	OF				
V-19-020	B-6	2	B/C	1	SCK	SCK	MSA	0	CT-CC		OF				
V-19-023	B-6	2	B/C	1	SCK	SCK	MSA	0	CT-CC		OF				
V-19-128	B-6	2	B/C	1	SCK	SCK	MSA	0	CT-CC		OF				

INSERVICE TESTING PROGRAM

PREPARED BY : NUTECH
PROGRAM : FRISIM

1ST CLASS 1, 2, 3, AND NC VALVES
DUANE ARNOLD ENERGY CENTER

PAID H-120 REVISION 14
SYSTEM : RESIDUAL HEAT REMOVAL

PAGE : 31
1ST PROGRAM REVISION : 005 , 12/23/83

COMA ELECTRIC LIGHT
AND POWER

VALVE NUMBER	PAID COOR	1ST CLASS	VALVE CAT	VALVE SIZE	VALVE TYPE	ACTUATOR TYPE	NORMAL POSITION	TEST	TEST FREQ	MAXIMUM STROKE TIME	MAXIMUM LEAKAGE	RELIEF REQUEST	REMARKS
CV-2002	F-3	1	A/C	20	CK	SAT	C	AT-5 CI-CC CI-CD PIT	RR CS CS 2Y				
MO-2000	G-2	2	B	10	GA	MO	C	BIC PIT	OF 2Y	014			
MO-2001	G-4	2	B	10	GL	MO	C/RL	BIC PIT	OF 2Y	014			
MO-2003	F-4	1	A/B	20	GA	MO	C	AT-5 BIC BIO PIT	RR OF OF 2Y	037 037			
MO-2004	F-4	2	B	20	ANG	MO	0	BIO PIT	OF 2Y	037			
MO-2005	G-4	2	B	12	GA	MO	C/RL	BIC BIO PIT	OF OF 2Y	083 083			
MO-2006	F-4	2	B	4	GL	MO	C	BIC PIT	OF 2Y	009			
MO-2007	F-5	2	B	12	GL	MO	C	BIC BIO PIT	OF OF 2Y	041 041			
MO-2009	C-4	2	B	3	GA	MO	0	BIC BIO PIT	OF OF 2Y	019 019			
MO-2011	C-3	2	B	14	GA	MO	C	BIC PIT	OF 2Y	084			

INSERVICE TESTING PROGRAM

1ST CLASS 1, 2, 3, AND NC VALVES
DUANE ARNOLD ENERGY CENTER

PREPARED BY : MUTECH
PROGRAM : FRISIM

PAGE : 32
IST PROGRAM REVISION : 005 , 12/23/83

FAID N-120 REVISION 14
SYSTEM : RESIDUAL HEAT REMOVAL

JOMA ELECTRIC LIGHT
AND POWER

MAXIMUM
STROKE
TIME

VALVE NUMBER	FAID	IST CLASS	VALVE CAT	VALVE SIZE	VALVE TYPE	ACTUATOR TYPE	NORMAL POSITION	TEST	TEST FREQ	MAXIMUM LEAKAGE	RELIEF REQUEST	REMARKS
MO-2012	C-3	2	B	14	GA	MO	0/KL	BTC BTD PIT	0P 0P 2Y	0B4 0B4		
MO-2015	C-3	2	B	14	GA	MO	0/KL	BTC E10 PIT	0P 0P 2Y	0B4 0B4		
MO-2016	C-2	2	B	14	GA	MO	C	BTC PIT	0P 2Y	0B4		
MO-2029	D-5	2	B	12	GA	MO	0	BTC BTD PIT	0P 0P 2Y	0B0 0B0		
MO-2030	E-5	2	B	18	GL	MO	0	BTC BTD PIT	0P 0P 2Y	060 060		
MO-2031	E-7	2	B	12	GA	MO	0	BTC BTD PIT	0P 0P 2Y	0B0 0B0		
MO-2036	E-8	2	B	4	GA	MO	C	BTC BTD PIT	0P 0P 2Y	030 030		
MO-2038	E-7	2	B	4	GA	MO	C	BTC PIT	0P 2Y	017		
MO-2040A	D-6	2	B	1	GL	MO	C	BTC PIT	0P 2Y	01B		
MO-2040B	B-6	2	B	1	GL	MO	C	BTC PIT	0P 2Y	01H		

INSERVICE TESTING PROGRAM

PREPARED BY : MIITECH
PROGRAM : FRISIM

1ST CLASS 1, 2, 3, AND NC VALVES
DUANE ARNOLD ENERGY CENTER

PIID M-120 REVISION 14 PAGE : 33
SYSTEM : RESIDUAL HEAT REMOVAL 1ST PROGRAM REVISION : 005 , 12/23/83

VALVE NUMBER	FAID COOR	1ST CLASS	VALVE CAT	VALVE SIZE	VALVE TYPE	ACTUATOR TYPE	NORMAL POSITION	TEST	TEST FREQ	MAXIMUM STROKE TIME	MAXIMUM LEAKAGE	RELIEF REQUEST	REMARKS
00-2069	D-3	2	B	24	GA	MD	0/KL	BTC BTD PIT	OF OF 2Y	140 140			
F5V-2043	D-6	2	B/C	4	RV	SA	C	CI-SP	5Y				
V-20-001	B-3	2	C	12	CK	SA	C	CI-CC CI-CD	OF OF				
V-20-003	A-5	2	C	12	CK	SA	C	CI-CC CI-CD	OF OF				
V-20-006	B-4	2	C	3	CK	SA	C	CI-CC CI-CD	OF OF				
V-20-008	H-2	2	C	3	CK	SA	C	CI-CC CI-CD	OF OF				

PREPARED BY : NUTECH
PROGRAM : FRISIH

INSERVICE TESTING PROGRAM

1ST CLASS 1, 2, 3, AND NC VALVES
DUANE ARNOLD ENERGY CENTER

IOWA ELECTRIC LIGHT
AND POWER

P&ID M-121 REVISION 13
SYSTEM : CORE SPRAY

PAGE : 34
1ST PROGRAM REVISION : 005 , 12/23/83

VALVE NUMBER	P&ID COOR	1ST CLASS	VALVE CAT	VALVE SIZE	VALVE TYPE	ACTUATOR TYPE	NORMAL POSITION	TEST	TEST FREQ	MAXIMUM STROKE TIME	MAXIMUM LEAKAGE	RELIEF REQUEST	REMARKS
CV-2118	F-6	1	A/C	B	CK	SAT	C	AT-5 CT-CC CT-CD PIT	RR RR RR 2Y			VR-33 VR-33	
CV-2138	E-6	1	A/C	B	CK	SAT	C	AT-5 CT-CC CT-CD PIT	RR RR RR 2Y			VR-33 VR-33	
HO-2100	H-5	2	B	1.2	GA	MO	O/KL	BTO PIT	OP 2Y	078			
HO-2104	D-3	2	B	2	GA	MO	0	BTC PIT	OP 2Y	013			
HO-2112	F-5	2	B	B	GL	MO	C	BTC PIT	OP 2Y	033			
HO-2115	G-5	2	A	B	GA	MO	0	AT-1 BTC BTO PIT	RR OP OP 2Y		NA		
HO-2117	G-6	1	A	B	GA	MO	C	AT-1 AT-5 BTC BTO PIT	RR RR OP OP 2Y		NA	VR-29	
HO-2120	C-5	2	B	1.2	GA	MO	O/KL	BTO PIT	OP 2Y	078			
HO-2124	D-4	2	B	2	GA	MO	0	BTC PIT	OP 2Y	013			

IOWA ELECTRIC LIGHT AND POWER

INSERVICE TESTING PROGRAM
 IST CLASS 1, 2, 3, AND MC VALVES
 DUANE ARNOLD ENERGY CENTER

PREPARED BY : NUTECH
 PROGRAM : PRISM

PAGE : 35
 1ST PROGRAM REVISION : 005 , 12/23/83

PAID M-124 REVISION 13
 SYSTEM : CORE SPRAY

VALVE NUMBER	PAID COOR	IST CLASS	VALVE CAT	VALVE SIZE	VALVE TYPE	ACTUATOR TYPE	NORMAL POSITION	TEST	TEST FREQ	MAXIMUM STROKE TIME	MAXIMUM LEAKAGE	RELIEF REQUEST	REMARKS
M0-2132	E-5	2	B	B	GL	M0	C	BTC PIT	0P 2Y	033			
M0-2135	E-5	2	A	B	GA	M0	0	AT-1 BTC BIO PIT	RR 0P 0P 2Y	00B 00B	NA		
M0-2137	E-6	1	A	B	GA	M0	C	AT-1 AT-5 BTC BIO PIT	RR RR 0P 0P 2Y		NA	VR-29	
M0-2146	C-5	2	B	12	GA	M0	0/KL	BTC BIO PIT	0P 0P 2Y	07B 07B			
M0-2147	B-5	2	B	12	GA	M0	0/KL	BTC BIO PIT	0P 0P 2Y	07B 07B			
F5V-2109	G-4	2	B/C	2	KV	SA	C	CI-SF	5Y				
F5V-2129	E-4	2	B/C	2	KV	SA	C	CI-SF	5Y				
V-21-007	D-3	2	C	10	CR	SA	C	CI-CO	0P				
V-21-009	D-3	2	C	2	CR	SA	C	CI-CO	0P				
V-21-010	D-4	2	C	10	CR	SA	C	CI-CO	0P				
V-21-012	D-4	2	C	2	CR	SA	C	CI-CO	0P				
M0V-2119	G-7	1	A/C	1	SFC	SA	0	AT-2 CI-CC PIT	RR RR 2Y				VR-B

INSERVICE TESTING PROGRAM
 IOWA ELECTRIC LIGHT
 AND POWER

PREPARED BY : NUTECH
 PROGRAM : PRISM

ISI CLASS 1, 2, 3, AND NC VALVES
 DUANE ARNOLD ENERGY CENTER

F&ID M-124 REVISION 13
 SYSTEM : CORE SPRAY

IST PROGRAM REVISION : 005 , 12/23/83

PAGE : 36

VALVE NUMBER	F&ID CODE	IST CLASS	VALVE CAT	VALVE SIZE	VALVE TYPE	ACTUATOR TYPE	NORMAL POSITION	TEST FREQ	TEST FREQ	MAXIMUM STROKE TIME	MAXIMUM LEAKAGE	RELIEF REQUEST	REMARKS
8FV 3139	G-7	1	A/C	1	XFC	SA	0	AT-2 CT-CC PIT	RR RR 2Y			VR-8	

INSERVICE TESTING PROGRAM
 1ST CLASS 1, 2, 3, AND NC VALVES
 DUANE ARNOLD ENERGY CENTER

PREPARED BY : NUTECH
 PROGRAM : FRISTM

F&ID M-122 REVISION 14
 SYSTEM : HFCI - STEAM SIDE

PAGE : 37
 1ST PROGRAM REVISION : 005 , 12/23/83

LOMA ELECTRIC LIGHT
 AND POWER

VALVE NUMBER	F&ID CORR	1ST CLASS	VALVE CAT	VALVE SIZE	VALVE TYPE	ACTUATOR TYPE	NORMAL POSITION	TEST POSITION	TEST FREQ	TEST FREQ	MAXIMUM STROKE TIME	MAXIMUM LEAKAGE	RELIEF REQUEST	REMARKS
CV-2206	D-2	2	B	1	GA	AD	C/FC	BIC FST PIT	OF OF 2Y	OF OF 2Y	005		VR-17	
CV-2211	C-2	2	A	1	GA	AD	O/FC	AT-1 BIC FST PIT	RR OF OF 2Y	RR OF OF 2Y	005		VR-29 VR-17	
CV-2212	C-2	2	A	1	GA	AD	O/FC	AT-1 BIC FST PIT	RR OF OF 2Y	RR OF OF 2Y	005		VR-17	
CV-2235	C-5	2	B	1	GA	AD	C/FC	BIC FST PIT	OF OF 2Y	OF OF 2Y	005		VR-17	
HV-2201	E-3	2	B	10	GL	HO	C	BIO PIT	OF 2Y	OF 2Y	030			
MO-2202	E-3	2	B	10	GA	MO	C	BIO PIT	OF 2Y	OF 2Y	021			
MO-2238	G-6	1	A	10	GA	MO	O	AT-1 BIC BIO PIT	RR OF OF 2Y	RR OF OF 2Y	013 013	NA	VR-29	
MO-2239	G-5	1	A	10	GA	MO	O	AT-1 BIC BIO PIT	RR OF OF 2Y	RR OF OF 2Y	013 013	NA		
MO-2247	E-5	2	B	2	GL	MO	C	BIO PIT	OF 2Y	OF 2Y	011			

IOWA ELECTRIC LIGHT AND POWER

INSERVICE TESTING PROGRAM

PREPARED BY : WITECH
PROGRAM : FRISIM

1ST CLASS 1, 2, 3, AND NC VALVES
DIANE ARNOLD ENERGY CENTER

PAGE : 38
1ST PROGRAM REVISION : 005 , 12/23/83

PAID M-122 REVISION 14
SYSTEM : HPCI - STEAM SIDE

VALVE NUMBER	FAID COOR	1ST CLASS	VALVE CAT	VALVE SIZE	VALVE TYPE	ACTUATOR TYPE	NORMAL POSITION	TEST	TEST FREQ	MAXIMUM STROKE TIME	MAXIMUM LEAKAGE	RELIEF REQUEST	REMARKS
MO-2290A	B-B	2	A	2	GA	MO	0	AT-1 BTC BTD FIT	RR OP OP 2Y	010 010	NA		
MO-2290B	B-B	2	A	2	GA	MO	0	AT-1 BTC BTD FIT	RR OP OP 2Y	010 010	NA		
FSV-2223	C-3	2	B/C	1.25	KV	SA	C	CT-SF	5Y				
FSV-2228	C-4	2	B/C	1	KV	SA	C	CT-SF	5Y				
SV-2206	D-2	NC	B	-	3MY	SO	ND	BTD	OP	NA		VR-2	
SV-2214	C-2	NC	B	-	3MY	SO	NE	BTD	OP			VR-2	
SV-2212	C-2	NC	B	-	3MY	SO	NE	BTD	OP			VR-2	
SV-2219	C-4	2	B	1	GL	SO	C	BTC	OP	NA		VR-18	
SV-2255	C-5	NC	B	-	3MY	SO	ND	BTD	OP	NA		VR-2	
SV-22-016	B-7	2	A/C	16	CK	SA	C	AT-1 CT-CC CT-CD	RR CS OP		NA		
SV-22-017	B-7	2	C	16	SLK	SA	C/LD	CT-CD	OP				
SV-22-021	B-7	2	A/C	2	CK	SA	C	AT-1 CT-CC CT-CD	RR CS OP		NA		
SV-22-022	B-7	2	C	2	SLK	MSA	C/LD	CT-CD	OP				

INSERVICE TESTING PROGRAM

PREPARED BY : NUITECH
PROGRAM : FRISIM

ISI CLASS 1, 2, 3, AND NC VALVES
DUANE ARNOLD ENERGY CENTER

PAID M-122 REVISION 14
SYSTEM : HFCI - STEAM SIDE

PAGE : 39
IST PROGRAM REVISION : 005 , 12/23/83

VALVE NUMBER	PAID COOR	IST CLASS	VALVE CAT	VALVE SIZE	VALVE TYPE	ACTUATOR TYPE	NORMAL POSITION	TEST	TEST FREQ	MAXIMUM STROKE TIME	MAXIMUM LEAKAGE	RELIEF REQUEST	REMARKS
V-22-026	B-3	2	C	2	CK	SA	C	CT-CC	OP				
V-22-028	B-4	2	C	2	CK	SA	C	CT-CC	OP				
V-22-029	B-5	2	C	2	CK	SA	C	CT-CC	OP				
V-22-063	B-8	2	C	3	CK	SA	C	CT-CC	CS				
V-22-064	B-8	2	C	3	CK	SA	C	CT-CC	CS				
XFV-2246A	F-6	1	A	1	XFC	SA	0	AT-2 CT-CC FIT	RR RR 2Y				VR-B
XFV-2246B	F-6	1	A	1	XFC	SA	0	AT-2 CT-CC FIT	RR RR 2Y				VR-B
XFV-2246C	F-6	1	A	1	XFC	SA	0	AT-2 CT-CC FIT	RR RR 2Y				VR-B
XFV-2246D	F-6	1	A	1	XFC	SA	0	AT-2 CT-CC FIT	RR RR 2Y				VR-B

IOWA ELECTRIC LIGHT
AND POWER

INSERVICE TESTING PROGRAM

PREPARED BY : BUTECH
PROGRAM : PRISM

IST CLASS 1, 2, 3, AND NC VALVES
DUANE ARNOLD ENERGY CENTER

P&ID SYSTEM : HPCI - WATER SIDE

P&ID M-123 REVISION 10
SYSTEM : HPCI - WATER SIDE

PAGE : 40

IST PROGRAM REVISION : 005 , 12/23/83

VALVE NUMBER	P&ID COOR	IST CLASS	VALVE CAT	VALVE SIZE	VALVE TYPE	ACTUATOR TYPE	NORMAL POSITION	TEST	TEST FREQ	MAXIMUM STROKE TIME	MAXIMUM LEAKAGE	RELIEF REQUEST	REMARKS
CV-2313	C-7	1	C	12	CK	SAT	C	CT-CC CI-CD PIT	CS CS 2Y				
MD-2300	F-4	2	B	14	GA	MO	0	BIC PIT	OP 2Y	077			
MD-2311	C-6	2	B	12	GA	MO	0	BID PIY	OP 2Y	018			
MD-2312	C-7	1	A	12	GA	MO	C	AT-1 EIC BID PIT	RR OP OP 2Y	020 020			NA
MD-2316	E-6	2	B	8	GA	MO	C	BIC PIT	OP 2Y	024			
MD-2318	C-5	2	B	4	GL	MO	C	BIC BID PIT	OP OP 2Y	018 018			
MD-2321	A-7	2	B	14	GA	MO	C	BIC BID PIT	OP OP 2Y	077 077			
MD-2322	F-4	2	B	14	GA	MO	C	BID PIT	OP 2Y	077			
FSV-2301	F-3	2	B/C	1.5	RV	SA	C	CI-SF	5Y				
V-23-001	A-6	2	C	14	CK	SA	C	CI-CD	BR				VR-21
V-23-014	F-4	2	C	4	CK	SA	C	CI-CD	OP				

IN-SERVICE TESTING PROGRAM
 IOWA ELECTRIC LIGHT
 AND POWER

PREPARED BY : NUTECH
 PROGRAM : FRISCH
 I-1 CLASS 1, 2, 3, AND MC VALVES
 DUANE ARNOLD ENERGY CENTER

P&ID M-124 REVISION 12
 SYSTEM : RCIC - STEAM SIDE
 PAGE : 41
 I-1 PROGRAM REVISION : 005 , 12/23/83

VALVE NUMBER	P&ID COOR	IST CLASS	VALVE CAT	VALVE SIZE	VALVE TYPE	ACTUATOR TYPE	NORMAL POSITION	TEST	TEST FREQ	MAXIMUM STROKE TIME	MAXIMUM LEAKAGE	RELIEF REQUEST	REMARKS
CV-2409	E-2	2	B	1	GA	AD	C/FC	BIC FST PIT	OP OP 2Y	005		VR-17	
CV-2410	D-3	2	A	1	GA	AD	O/FC	AT-1 BIC FST PIT	RR OP OP 2Y	005	NA	VR-29 VR-17	
CV-2411	D-3	2	A	1	GA	AD	O/FC	AT-1 BIC FST PIT	RR OP OP 2Y	005	NA	VR-17	
CV-2416	B-5	2	B	1	GA	AD	O/FC	BIC FST PIT	OP OP 2Y	005		VR-17	
CV-2400	G-6	1	A	4	GA	MD	0	AT-1 BIC BIO PIT	RR OP OP 2Y	020 020	NA	VR-29	
CV-2401	G-5	1	A	4	GA	MD	0	AT-1 BIC BIO PIT	RR OP OP 2Y	020 020	NA	VR-29	
CV-2404	G-3	2	B	4	GL	MD	C	BIO PIT	OP 2Y	016			
CV-2405	F-3	2	B	3	GL	MD	C	BIO PIT	OP 2Y	015			
CV-2406	D-6	2	B	1	GL	MD	C	BIO PIT	OP 2Y	014			

INSERVICE TESTING PROGRAM

PREPARED BY : MUTECH
PROGRAM : PRISM

IST CLASS 1, 2, 3, AND NC VALVES
DUANE ARMOUR ENERGY CENTER

IST PROGRAM REVISION : 005 , 12/23/83

F&ID M-124 REVISION 12
SYSTEM : RCIC - STEAM SIDE

PAGE : 42

VALVE NUMBER	F&ID COOR	IST CLASS	VALVE CAT	VALVE SIZE	VALVE TYPE	ACTUATOR TYPE	NORMAL POSITION	TEST	TEST FREQ	MAXIMUM STROKE TIME	MAXIMUM LEAKAGE	RELIEF REQUEST	REMARKS
SV-2474	C-3	2	B/C	1.25	KV	SA	C	CT-SP	5Y				
SV-2409	E-2	NC	B	-	3MY	SO	ND	BTD	OP	NA		VR-2	
SV-2410	D-3	NC	B	-	3MY	SO	NE	BTD	OP			VR-2	
SV-2411	D-3	NC	B	-	3MY	SO	NE	BTD	OP			VR-2	
SV-2436	B-5	NC	B	-	3MY	SO	NE	BTD	OP	NA		VR-2	
SV-24-00B	D-7	2	C	10.	SCK	MSA	C/L0	CT-CD	OP				NOTE-005
SV-24-01.2	C-6	2	C	2	CK	SA	C	CT-CD	OP				NOTE-005
SV-24-02.5	D-7	2	A/C	10	CK	SA	C	AT-1 CT-CC CT-CD	RR CS OP	NA			
SV-24-046	D-7	2	C	3	CK	SA	C	CT-CC CT-CD	CS OP				
SV-24-047	D-7	2	C	3	CK	SA	C	CT-CC CT-CD	CS OP				
SV-2443A	F-6	1	A/C	1	XFC	SA	0	AT-2 CT-CC PII	RR RR 2Y			VR-8	
SV-2443B	F-6	1	A/C	1	XFC	SA	0	AT-2 CT-CC PII	RR RR 2Y			VR-8	
SV-2443C	F-6	1	A/C	1	XFC	SA	0	AT-2 CT-CC PII	RR RR 2Y			VR-8	

INSERVICE TESTING PROGRAM
 10MA ELECTRIC LIGHT
 AND POWER

PREPARED BY : MUTECH
 PROGRAM : FRISIM
 1ST CLASS 1, 2, 3, AND NC VALVES
 DUANE ARMOUR ENERGY CENTER

P&ID M-124 REVISION 12
 SYSTEM : KCIC - STEAM SIDE

PAGE : 43
 1ST PROGRAM REVISION : 005 , 12/23/83

VALVE NUMBER	P&ID CORR	1ST CLASS	VALVE CAT	VALVE SIZE	VALVE TYPE	ACTUATOR TYPE	NORMAL POSITION	TEST FREQ	TEST FREQ	MAXIMUM STROKE TIME	MAXIMUM LEAKAGE	RELIEF REQUEST	REMARKS
xFV-243D	F-6	1	A/C	1	XFC	SA	0	AT-2	RR			VR-8	
								CT-CC	RR				
								PII	2Y				

IOWA ELECTRIC LIGHT
AND POWER

INSERVICE TESTING PROGRAM

PREPARED BY : MUTECH
PROGRAM : PRISM

ISI CLASS 1, 2, 3, AND NC VALVES
DUANE ARNOLD ENERGY CENTER

FAID M-125 REVISION 12 PAGE 44
SYSTEM : RCTC -- WATER SIDE IST PROGRAM REVISION : 005 , 12/23/83

VALVE NUMBER	FAID CODE	IST CLASS	VALVE CAT	VALVE SIZE	VALVE TYPE	ACTUATOR TYPE	NORMAL POSITION	TEST	TEST FREQ	MAXIMUM STROKE TIME	MAXIMUM LEAKAGE	RELIEF REQUEST	REMARKS
NO-2513	D-6	1	C	4	CK	SAT	C	CT-CC CT-CD FIT	CS CS 2Y				
NO-2500	F-4	2	B	6	GA	MO	0	BIC FIT	OP 2Y	040			
NO-2510	C-4	2	B	2	GL	MO	C	BIC BIO FIT	OP OP 2Y	013 013			
NO-2511	D-5	2	B	4	GA	MO	D	BIO FIT	OP 2Y	015			
NO-2512	D-6	1	A	4	GA	MO	C	AT-1 BIC BIO FIT	RR OP OP 2Y	015 015		NA	
NO-2516	A-5	2	B	6	GA	MO	C	BIC BIO FIT	OP OP 2Y	040 040			
NO-2517	F-4	2	B	6	GA	MO	C	BIO FIT	OP 2Y	040			
NO-2501	E-4	2	B/C	1	RV	SA	C	CT-SP	5Y				
NO-25001	A-5	2	C	6	CK	SA	L	CT-CD	RR				VR-21
NO-25005	F-4	2	C	6	CK	SA	C	CT-CC	OP				
NO-25006	C-4	2	C	2	CK	SA	C	CT-CD	OP				

INSERVILE TESTING PROGRAM

1ST CLASS 1, 2, 3, AND NC VALVES
 DIANE ARNOU.D ENERGY CENTER

PREPARED BY : NUTECH
 PROGRAM : PRISM

FAID M-126 REVISION 09
 SYSTEM STANRDY LIQUID CONTROL

1ST PROGRAM REVISION : 005 , 12/23/83

PAGE : 45

TOMA ELECTRIC LIGHT
 AND POWER

VALVE NUMBER	FAID COOR	IST CLASS	VALVE CAT	VALVE SIZE	VALVE TYPE	ACTUATOR TYPE	NORMAL POSITION	TEST	TEST FREQ	MAXIMUM STROKE TIME	MAXIMUM LEAKAGE	RELIEF REQUEST	REMARKS
F-5-2607	E-5	2	B/C	1	KV	SA	C	CT-SP	5Y				
F-5-2609	B-5	2	B/C	1	KV	SA	C	CT-SP	5Y				
V-26-004	D-5	2	C	1.5	CK	SA	C	CT-CC CT-CD	OP OP				
V-26-006	C-5	2	C	1.5	CK	SA	C	CT-CC CT-CD	OP OP				
V-26-008	F-7	1	A/C	1.5	CK	SA	C	AT-1 CT-CC CT-CD	RR RR RR	NA		VR-20 VR-20	
V-26-009	D-8	1	A/C	1.5	CK	SA	C	AT-1 CT-CC CT-CD	RR RR RR	NA		VR-20 VR-20	
X-2618A	F-6	2	D	1.5	GA	EXP	C	DT	RR				
X-2618B	D-6	2	D	1.5	GA	EXP	C	DT	RR				

PREPARED BY : MUTECH
PROGRAM : PRISM

INSERVICE TESTING PROGRAM

IOWA ELECTRIC LIGHT
AND POWER

ISI CLASS 1, 2, 3, AND NC VALVES
DUANE ARNOLD ENERGY CENTER

FAID M-127 REVISION 15
SYSTEM : REACTOR WATER CLEANUP

PAGE : 46
IST PROGRAM REVISION : 005 , 12/23/83

VALVE NUMBER	FAID CODE	IST CLASS	VALVE CAT	VALVE SIZE	VALVE TYPE	ACTUATOR TYPE	NORMAL POSITION	TEST FIT	TEST FREQ	MAXIMUM STROKE TIME	MAXIMUM LEAKAGE	RELIEF REQUEST	REMARKS
00-2700	F-B	1	A	4	GA	M0	0	AT-1 BTC FIT	RR OF 2Y	020	NA		
00-2701	F-7	1	A	4	GA	M0	0	AT-1 BTC FIT	RR OF 2Y	020	NA		
00-2700	G-4	1	A	4	GL	M3	0	AT-1 BTC FIT	RR OF 2Y	010	NA		

IOWA ELECTRIC LIGHT
 AND POWER
 INSERVICE TESTING PROGRAM
 1ST CLASS 1, 2, 3, AND NC VALVES
 DUANE ARNOLD ENERGY CENTER

PREPARED BY : NUTECH
 PROGRAM : PRISM

VALVE NUMBER	PAID CDR	IST CLASS	VALVE CAT	VALVE SIZE	VALVE TYPE	ACTUATOR TYPE	NORMAL POSITION	TEST	TEST FREQ	MAXIMUM STROKE TIME	MAXIMUM LEAKAGE	RELIEF REQUEST	REMARKS
V-29-001	D-6	NC	C	1B	CK	SA	0	CT-CC CT-CO	OP				
V-29-003	D-5	NC	C	1B	CK	SA	0	CT-CC CT-CO	OP				
V-29-005	D-5	NC	C	1B	CK	SA	0	CT-CC CT-CO	OP				
V-29-007	D-4	NC	C	1B	CK	SA	0	CT-CC CT-CO	OP				

PAID M-129 REVISION 11
 SYSTEM : RIVER WATER SUPPLY - INTAKE
 PAGE : 47
 IST PROGRAM REVISION : 003 , 12/23/83

IOWA ELECTRIC LIGHT
AND POWER

IN-SERVICE TESTING PROGRAM

1ST CLASS 1, 2, 3, AND NC VALVES
DUANE ARNOLD ENERGY CENTER

PREPARED BY : NUTECH
PROGRAM : PRISM

FAID M-130 REVISION 16 PAGE : 4B
SYSTEM : COMPRESSED AIR 1ST PROGRAM REVISION : 005 , 12/23/83

VALVE NUMBER	FAID CODE	1ST CLASS	VALVE CAT	VALVE SIZE	VALVE TYPE	ACTUATOR TYPE	NORMAL POSITION	TEST FREQ	TEST TIME	MAXIMUM STROKE TIME	MAXIMUM LEAKAGE	RELIEF REQUEST	REMARKS
V-30-287	B-B	NC	A	1	GA	M	C/LC	AT-1	RR			NA	

PREPARED BY : MUTECH
PROGRAM : PRISM

INSERVICE TESTING PROGRAM

LUMA ELECTRIC LIGHT
AND POWER

ISI CLASS 1, 2, 3, AND NC VALVES
DUANE ARNOLD ENERGY CENTER

P&ID M-132 REVISION 16 PAGE : 49
SYSTEM : DIESEL GENERATOR SYSTEMS IST PROGRAM REVISION : 005 , 12/23/83

VALVE NUMBER	F&ID COOR	ISI CLASS	VALVE CAT	VALVE SIZE	VALVE TYPE	ACTUATOR TYPE	NORMAL POSITION	TEST TEST	TEST FREQ	MAXIMUM STROKE TIME	MAXIMUM LEAKAGE	RELIEF REQUEST	REMARKS
V-32-005	B-3	2	NC	1.5	CK	SA	C	CT-CC CT-CO	OP OP				
V-32-010	B-2	2	NC	1.5	CK	SA	C	CT-CC CT-CO	OP OP				

PREPARED BY : MUTECH
PROGRAM : PRISM

INSERVICE TESTING PROGRAM

IOWA ELECTRIC LIGHT
AND POWER

151 CLASS 1, 2, 3, AND HC VALVES
DUANE ARNOLD ENERGY CENTER

FAID M-137 REVISION 12
SYSTEM : RADWASTE SUMP

IST PROGRAM REVISION : 005 , 12/23/B3

PAGE : 50

VALVE NUMBER	FAID COOR	IST CLASS	VALVE CAT	VALVE SIZE	VALVE TYPE	ACTUATOR TYPE	NORMAL POSITION	TEST	TEST FREQ	MAXIMUM STROKE TIME	MAXIMUM LEAKAGE	RELIEF REQUEST	REMARKS
CV-3704	H-7	3	A	3	GA	A0	0/FC	AT-1 BTC FST FIT	RR OF OF 2Y	004	NA	VR-29 VR-17	
CV-3705	H-7	3	A	3	GA	A0	0/FC	AT-1 BTC FST FIT	RR OF OF 2Y	004	NA	VR-17	
CV-3728	D-6	3	A	3	GA	A0	0/FC	AT-1 BTC FST FIT	RR OF OF 2Y	004	NA	VR-29 VR-17	
CV-3729	D-6	3	A	3	GA	A0	0/FC	AT-1 BTC FST FIT	RR OF OF 2Y	004	NA	VR-17	
SV-3704	G-7	NC	B	-	3MY	S0	NE	BTD	OF	NA	NA	VR-2	
SV-3705	G-7	NC	B	-	3MY	S0	NE	BTD	OF	NA	NA	VR-2	
SV-3728	C-6	NC	B	-	3MY	S0	NE	BTD	OF	NA	NA	VR-2	
SV-3729	C-6	NC	B	-	3MY	S0	NE	BTD	OF	NA	NA	VR-2	

PREPARED BY : MUTECH
PROGRAM : PRISM

INSERVICE TESTING PROGRAM
IST CLASS 1, 2, 3, AND NC VALVES
DUANE ARNOLD ENERGY CENTER

IOWA ELECTRIC LIGHT
AND POWER

P&ID M-143 REVISION 2B
SYSTEM : CONTAINMENT ATMOSPHERE CONTROL

PAGE : 51
IST PROGRAM REVISION : 005 , 12/23/83

VALVE NUMBER	P&ID COOR	IST CLASS	VALVE CAT	VALVE SIZE	VALVE TYPE	ACTUATOR TYPE	NORMAL POSITION	TEST TEST	FREQ	MAXIMUM STROKE TIME	MAXIMUM LEAKAGE	RELIEF REQUEST	REMARKS
CV-4300	C-7	NC	A	18	BTf	AO	C/FC	AT-1 BTC FST PIT	RR OP OP 2Y	005	NA	VR-17	
CV-4301	C-8	NC	A	18	BTf	AO	C/FC	AT-1 BTC FST PIT	RR OP OP 2Y	005	NA	VR-17	
CV-4302	D-7	NC	A	18	BTf	AO	C/FC	AT-1 BTC FST PIT	RR OP OP 2Y	005	NA	VR-17	
CV-4303	D-7	NC	A	18	BTf	AO	C/FC	AT-1 BTC FST PIT	RR OP OP 2Y	005	NA	VR-17	
CV-4304	B-7	NC	A	20	BTf	AO	C/FO	AT-1 BTC BTO FST PIT	RR OP OP OP 2Y	005 042	NA	VR-17	
CV-4305	B-7	NC	A	20	BTf	AO	C/FO	AT-1 BTC BTO FST PIT	RR OP OP OP 2Y	005 042	NA	VR-17	
CV-4306	E-1	NC	A	18	BTf	AO	C/FC	AT-1 BTC FST PIT	RR OP OP 2Y	005	NA	VR-17	

INSERVICE TESTING PROGRAM

IOWA ELECTRIC LIGHT AND POWER

PREPARED BY : NUTECH
PROGRAM : PRISM

IST CLASS 1, 2, 3, AND NC VALVES
DUANE ARNOLD ENERGY CENTER

P&ID M-143 REVISION 28 PAGE : 52
SYSTEM : CONTAINMENT ATMOSPHERE CONTROL IST PROGRAM REVISION : 005 , 12/23/83

VALVE NUMBER	P&ID COOR	IST CLASS	VALVE CAT	VALVE SIZE	VALVE TYPE	ACTUATOR TYPE	NORMAL POSITION	TEST	TEST FREQ	MAXIMUM STROKE TIME	MAXIMUM LFWAKE	RELIEF REQUEST	REMARKS
CV-4307	E-3	NC	A	1B	RIF	AD	C/FC	AT-1 BIC FST PTI	RR OP OP 2Y	005	NA	VR-17	
CV-4308	E-3	NC	A	1B	RIF	AD	C/FC	AT-1 BIC FST PTI	RR OP OP 2Y	005	NA	VR-17	
CV-4309	D-7	NC	A	2	GA	AD	C/FC	AT-1 BIC FST PTI	RR OP OP 2Y	005	NA	VR-17	
CV-4310	D-7	NC	A	2	GA	AD	C/FC	AT-1 BIC FST PTI	RR OP OP 2Y	005	NA	VR-17	
CV-4311	F-3	NC	A	6	GA	AD	C/FC	AT-1 BIC FST PTI	RR OP OP 2Y	005	NA	VR-17	
CV-4312	F-3	NC	A	6	GA	AD	C/FC	AT-1 BIC FST PTI	RR OP OP 2Y	005	NA	VR-17	
CV-4313	F-3	NC	A	6	GA	AD	C/FC	AT-1 BIC FST PTI	RR OP OP 2Y	005	NA	VR-17	
CV-4320	C-7	NC	A/C	1B	CR	S/GI	C	AT-4 CI-CC CI-CD PTI	RR OP OP 2Y		NA	VR-11	

INSERVICE TESTING PROGRAM

10MA ELECTRIC LIGHT AND POWER
1ST CLASS 1, 2, 3, AND NC VALVES
DIANE ARNOLD ENERGY CENTER

PREPARED BY : NUTECH
PROGRAM : FRISIM

P&ID M-143 REVISION 2B
SYSTEM : CONTAINMENT ATMOSPHERE CONTROL

PAGE : 53
1ST PROGRAM REVISION : 005 , 12/23/83

VALVE NUMBER	P&ID COOR	1ST CLASS	VALVE CAT	VALVE SIZE	VALVE TYPE	ACTUATOR TYPE	NORMAL POSITION	TEST	TEST FREQ	MAXIMUM STROKE TIME	MAXIMUM LEAKAGE	RELIEF REQUEST	REMARKS
CV-4327B	C-7	NC	A/C	1B	CK	SAT	C	A1-4 CT-CC CT-CD PII	RR OF OF 2Y		NA	VR-11	
CV-4327C	C-7	NC	A/C	1B	CK	SAT	C	A1-4 CT-CC CT-CD PII	RR OF OF 2Y		NA	VR-11	
CV-4327E	C-7	NC	A/C	1B	CK	SAT	C	A1-4 CT-CC CT-CD PII	RR OF OF 2Y		NA	VR-11	
CV-4327F	C-7	NC	A/C	1B	CK	SAT	C	A1-4 CT-CC CT-CD PII	RR OF OF 2Y		NA	VR-11	
CV-4327G	C-7	NC	A/C	1B	CK	SAT	C	A1-4 CT-CC CT-CD PII	RR OF OF 2Y		NA	VR-11	
CV-4327H	C-7	NC	A/C	1B	CK	SAT	C	A1-4 CT-CC CT-CD PII	RR OF OF 2Y		NA	VR-11	
CV-4327A	E-5	NC	A	2	GA	AD	D/F/C	A1-1 BIC FST PII	RR OF OF 2Y	005	NA	VR-17	
CV-4327C	E-5	NC	A	2	GA	AD	D/F/C	A1-1 BIC FST PII	RR OF OF 2Y	005	NA	VR-17	

IOWA ELECTRIC LIGHT
AND POWER

CHSERVICE TESTING PROGRAM
IST CLASS 1, 2, 3, AND MC VALVES
DUANE ARNOLD ENERGY CENTER

PREPARED BY : NUTECH
PROGRAM : PRISIR

FAID M-143 REVISION 28 PAGE : 54
SYSTEM : CONTAINMENT ATMOSPHERE CONTROL IST PROGRAM REVISION : 005 , 12/23/83

VALVE NUMBER	FAID COOR	IST CLASS	VALVE CAT	VALVE SIZE	VALVE TYPE	ACTUATOR TYPE	NORMAL POSITION	TEST	TEST FREQ	MAXIMUM STROKE TIME	MAXIMUM LEAKAGE	RELIEF REQUEST	REMARKS
UV-4378A	E-5	MC	A	2	GA	AD	O/FC	AT-1 BIC FST FIT	RR OP OP 2Y	025	NA	VR-17	
UV-4378B	E-5	MC	A	2	GA	AD	O/FC	AT-1 BIC FST FIT	RR OP OP 2Y	025	NA	VR-17	
UV-4329A	C-3	2	B	2	GA	MO	C	BIC BIC F-T	OP OP 2Y	012 012			
UV-4329B	C-4	2	B	2	GA	MO	C	BIC BIC FIT	OP OP 2Y	012 012			
UV-4323A	B-3	2	B	2	GL	MO	C	BID FIT	OP 2Y	040			
UV-4323B	B-4	2	B	2	GL	MO	C	BID FIT	OP 2Y	040			
UV-4300	C-7	MC	B	-	30Y	SO	ND	BID	OP	NA		VR-2	
UV-4301	C-8	MC	B	-	30Y	SO	ND	BID	OP	NA		VR-2	
UV-4302	D-7	MC	B	-	30Y	SO	ND	BID	OP	NA		VR-2	
UV-4303	D-7	MC	B	-	30Y	SO	ND	BID	OP	NA		VR-2	
UV-4304	B-7	MC	B	.75	30Y	SO	NE	BID BIE	OP OP	NA NA		VR-2 VR-2	
UV-4305	B-7	MC	B	.75	30Y	SO	NE	BID BIE	OP OP	NA NA		VR-2 VR-2	

INSERVICE TESTING PROGRAM

100A ELECTRIC LIGHT AND POWER

PREPARED BY : NUTECH PROGRAM : PRISM

1ST CLASS 1, 2, 3, AND NC VALVES DUANE ARNOLD ENERGY CENTER

P&ID M-143 REVISION 28 1ST PROGRAM REVISION : 00, 12/23/83 PAGE : 55

SYSTEM : CONTAINMENT ATMOSPHERE CONTROL

VALVE NUMBER	P&ID COOR	IST CLASS	VALVE CAT	VALVE SIZE	VALVE TYPE	ACTUATOR TYPE	NORMAL POSITION	TEST	TEST FREQ	MAXIMUM STROKE TIME	MAXIMUM LEAKAGE	RELIEF REQUEST	REMARKS
SV-4306	E-1	NC	B	-	3MY	SO	ND	BTD	OF	NA	NA	VR-2	
SV-4307	E-3	NC	B	-	3MY	SO	ND	BTD	OF	NA	NA	VR-2	
SV-4308	E-3	NC	B	-	3MY	SO	ND	BTD	OF	NA	NA	VR-2	
SV-4309	D-7	NC	B	-	3MY	SO	ND	BTD	OF	NA	NA	VR-2	
SV-4310	D-7	NC	B	-	3MY	SO	ND	BTD	OF	NA	NA	VR-2	
SV-4311	F-3	NC	B	-	3MY	SO	ND	BTD	OF	NA	NA	VR-2	
SV-4312	F-3	NC	B	-	3MY	SO	ND	BTD	OF	NA	NA	VR-2	
SV-4313	F-3	NC	B	-	3MY	SO	ND	BTD	OF	NA	NA	VR-2	
SV-4331A	C-2	NC	A	2	GA	SO	C/KC	AT-1 BTC FST FTI	KK OF OF 2Y	005 005	NA	VR-34 VR-24 VR-17	
SV-4351B	C-2	NC	A	2	GA	SO	C/KC	AT-1 BTC FST FTI	KK OF OF 2Y	005 005	NA	VR-34 VR-34 VR-17	
SV-4352A	C-2	NC	A	2	GA	SO	C/KC	AT-1 BTC FST FTI	KK OF OF 2Y	005 005	NA	VR-34 VR-34 VR-17	
SV-4352B	C-2	NC	A	2	GA	SO	C/KC	AT-1 BTC FST FTI	KK OF OF 2Y	005 005	NA	VR-34 VR-34 VR-17	

INSERVICE TESTING PROGRAM
 IOWA ELECTRIC LIGHT
 AND POWER

PREPARED BY : NUTECH
 PROGRAM : PRISM

IST CLASS 1, 2, 3, AND NC VALVES
 DUANE ARNOLD ENERGY CENTER

P&ID M-143 REVISION 2B
 SYSTEM : CONTAINMENT ATMOSPHERE CONTROL

PAGE : 56
 IST PROGRAM REVISION : 005 , 12/23/83

VALVE NUMBER	P&ID COOR	IST CLASS	VALVE CAT	VALVE SIZE	VALVE TYPE	ACTUATOR TYPE	NORMAL POSITION	TEST	TEST FREQ	MAXIMUM STROKE TIME	MAXIMUM LEAKAGE	RELIEF REQUEST	REMARKS
SV-4333A	C-2	NC	A	2	GA	SO	C/KC	AT-1 BIC BID FST FIT	KR OP OP OP 2Y	005 005	NA	VR-34 VR-34 VR-17	
SV-4333B	C-2	NC	A	2	GA	SO	C/KC	AT-1 BIC BID FST FIT	KR OP OP OP 2Y	005 005	NA	VR-34 VR-34 VR-17	
SV-4334A	B-2	NC	A	2	GA	SO	C/KC	AT-1 BIC BID FST FIT	KR OP OP OP 2Y	005 005	NA	VR-34 VR-34 VR-17	
SV-4334B	B-2	NC	A	2	GA	SO	C/KC	AT-1 BIC BID FST FIT	KR OP OP OP 2Y	005 005	NA	VR-34 VR-34 VR-17	
SV-4371A	E-5	NC	B	-	3MY	SO	NE	BID	OP	NA	NA	VR-2	
SV-4371C	F-5	NC	B	-	3MY	SO	NE	BID	OP	NA	NA	VR-2	
SV-4371B	E-5	NC	B	-	3MY	SO	NE	BID	OP	NA	NA	VR-2	
SV-4371D	F-5	NC	B	-	3MY	SO	NE	BID	OP	NA	NA	VR-2	
SV-43-032	H-6	NC	C	.75	CK	SA	C	CI-CC	CS				
SV-43-035	H-8	NC	C	.75	CK	SA	C	CI-CC	CS				

IOWA ELECTRIC LIGHT
AND POWER

(INSERVICE TESTING PROGRAM

IST CLASS 1, 2, 3, AND NC VALVES
DUANE ARNOLD ENERGY CENTER

PREPARED BY : MUTECH
PROGRAM : PRISM

PAID M-143 REVISION 28 PAGE : 57
SYSTEM : CONTAINMENT ATMOSPHERE CONTROL IST PROGRAM REVISION : 005 , 12/23/83

VALVE NUMBER	F&D COOR	IST CLASS	VALVE CAT	VALVE SIZE	VALVE TYPE	ACTUATOR TYPE	NORMAL POSITION	TEST	TEST FREQ	MAXIMUM STROKE TIME	MAXIMUM LEAKAGE	RELIEF REQUEST	REMARKS
V-43-0B2	C-3	2	C	2	CK	SA	C	CT-CO	KR				VR-24
V-43-0B4	C-3	2	C	2	CK	SA	C	CT-CO	KR				VR-24
V-43-0B6	C-3	2	C	2	CK	SA	C	CT-CO	KR				VR-24
V-43-0BB	B-3	2	C	2	CK	SA	C	CT-CO	KR				VR-24
V-43-16B	A-7	NC	A/C	20	CK	SA	C	AT-1 CT-CC CT-CO PIT	KR OP OP 2Y		NA		
V-43-169	A-7	NC	A/C	20	CK	SA	C	AT-1 CT-CC CT-CO PIT	KR OP OP 2Y		NA		
V-43-214	F-4	NC	A/C	2	CK	SA	C	AT-1 CT-CC	KR KR		NA		VR-25

INSERVICE TESTING PROGRAM
 IOWA ELECTRIC LIGHT
 AND POWER

PREPARED BY : MUTECH
 PROGRAM : PRISM
 I-1 CLASS 1, 2, 3, AND NC VALVES
 DUANE ARNOLD ENERGY CENTER

F&ID M-146 REVISION 15 PAGE : 58
 SYSTEM : SERVICE WATER PUMP HOUSE IST PROGRAM REVISION : 005 , 12/23/83

VALVE NUMBER	F&ID COOR	IST CLASS	VALVE CAT	VALVE SIZE	VALVE TYPE	ACTUATOR TYPE	NORMAL POSITION	TEST FREQ	TEST TIME	MAXIMUM STROKE TIME	MAXIMUM LEAKAGE	RELIEF REQUEST	REMARKS
V-46-011	B-5	3	C	12	CK	SA	C	CT-CC CT-CO	OP OP				
V-46-013	B-5	3	C	12	CK	SA	C	CT-CC CT-CO	OP OP				
V-46-018	C-6	3	C	8	CK	SA	C	CT-CC CT-CO	RR RR				
V-46-021	C-6	3	C	8	CK	SA	C	CT-CC CT-CO	RR RR				
V-46-026	D-7	3	C	12	CK	SA	C	CT-CC CT-CO	OP OP				
V-46-030	D-7	3	C	12	CK	SA	C	CT-CC CT-CO	OP OP				

IOWA ELECTRIC LIGHT AND POWER

INSERVICE TESTING PROGRAM

PREPARED BY : NUTECH
PROGRAM : FRISTM

IST CLASS 1, 2, 3, AND NC VALVES
DIANE ARNOLD ENERGY CENTER

P&ID M-157 REVISION 08 PAGE : 59
SYSTEM : DRYWELL COOLING WATER IST PROGRAM REVISION : 005 , 12/23/83

VALVE NUMBER	P&ID COOR	IST CLASS	VALVE CAT	VALVE SIZE	VALVE TYPE	ACTUATOR TYPE	NORMAL POSITION	TEST	TEST FREQ	MAXIMUM STROKE TIME	MAXIMUM LEAKAGE	RELIEF REQUEST	REMARKS
CV-5703A	G-7	3	A	3	GL	M	C	AT-1 PIT	RR 2Y		NA		
CV-5703B	F-7	3	A	3	GL	M	C	AT-1 PIT	RR 2Y		NA		
CV-5704A	H-6	3	A	4	GL	AD	O/F/O	AT-1 BIC BIO FST PIT	RR OP OP OP 2Y	005 005	NA		VR-17
CV-5704B	H-6	3	A	4	GL	AD	O/F/O	AT-1 BIC BIO FST PIT	RR OP OP OP 2Y	005 005	NA		VR-17
CV-5710A	H-8	3	A	4	GL	AD	O/F/O	AT-1 BIC BIO FST PIT	RR OP OP OP 2Y	005 005	NA		VR-17
CV-5710B	A-8	3	A	4	GL	AD	O/F/O	AT-1 BIC BIO FST PIT	RR OP OP OP 2Y	005 005	NA		VR-17
CV-5719A	H-7	3	A	3	GL	M	C	AT-1 PIT	RR 2Y		NA		
CV-5719B	A-7	3	A	3	GL	M	C	AT-1 PIT	RR 2Y		NA		

IOWA ELECTRIC LIGHT
AND POWER

INSERVICE TESTING PROGRAM

PREPARED BY : NUTECH
PROGRAM : PRISTA

1ST CLASS 1, 2, 3, AND NC VALVES
DUANE ARNOLD ENERGY CENTER

F&ID M-157 REVISION OR PAGE : 60
SYSTEM : DRYWELL COOLING WATER 1ST PROGRAM REVISION : 005 , 12/23/83

VALVE NUMBER	F&ID COOR	1ST CLASS	VALVE CAT	VALVE SIZE	VALVE TYPE	ACTUATOR TYPE	NORMAL POSITION	TEST	TEST FREQ	MAXIMUM STROKE TIME	MAXIMUM LEAKAGE	RELIEF REQUEST	REMARKS
SV-5704A	H-6	NC	B	-	3WY	SO	ND	BTD BTE	0P 0P	NA NA		VR-2 VR-2	
SV-5704B	H-6	NC	B	-	3WY	SO	ND	BTD BTE	0P 0P	NA NA		VR-2 VR-2	
SV-5718A	B-B	NC	B	-	3WY	SO	ND	BTD BTE	0P 0P	NA NA		VR-2 VR-2	
SV-5718B	A-B	NC	B	-	3WY	SO	ND	BTD BTE	0P 0P	NA NA		VR-2 VR-2	

INSERVICE TESTING PROGRAM
 IOWA ELECTRIC LIGHT
 AND POWER

PREPARED BY : MITECH
 PROGRAM : FRISH
 IST CLASS 1, 2, 3, AND NC VALVES
 DUANE AKNOLD ENERGY CENTER

P&ID M-181 REVISION 10 PAGE : 61
 SYSTEM : CONTAINMENT ATMOSPHERE MONITORING IST PROGRAM REVISION : 005 , 12/23/83

VALVE NUMBER	P&ID COOR	IST CLASS	VALVE CAT	VALVE SIZE	VALVE TYPE	ACTUATOR TYPE	NORMAL POSITION	TEST	TEST FREQ	MAXIMUM STROKE TIME	MAXIMUM LEAKAGE	RELIEF REQUEST	REMARKS
SV-B101A	F-5	NC	A	1	GL	SO	O/FC	AT-1 BIC FST	RR OF OF	NA	NA	VR-32 VR-17	
SV-B101B	F-4	NC	A	1	GL	SO	O/FC	AT-1 BIC FST	RR OF OF	NA	NA	VR-32 VR-17	
SV-B102A	F-5	NC	A	1	GL	SO	O/FC	AT-1 BIC FST	RR OF OF	NA	NA	VR-32 VR-17	
SV-B102B	F-4	NC	A	1	GL	SO	O/FC	AT-1 BIC FST	RR OF OF	NA	NA	VR-32 VR-17	
SV-B103A	E-5	NC	A	1	GL	SO	O/FC	AT-1 BIC FST	RR OF OF	NA	NA	VR-32 VR-17	
SV-B103B	E-4	NC	A	1	GL	SO	O/FC	AT-1 BIC FST	RR OF OF	NA	NA	VR-32 VR-17	
SV-B104A	F-5	NC	A	1	GL	SO	O/FC	AT-1 BIC FST	RR OF OF	NA	NA	VR-32 VR-17	
SV-B104B	E-4	NC	A	1	GL	SO	O/FC	AT-1 BIC FST	RR OF OF	NA	NA	VR-32 VR-17	
SV-B105A	E-5	NC	A	1	GL	SO	O/FC	AT-1 BIC FST	RR OF OF	NA	NA	VR-32 VR-17	

IN-SERVICE TESTING PROGRAM
 IOWA ELECTRIC LIGHT
 AND POWER

PREPARED BY : MITECH
 PROGRAM : PRISM
 IST CLASS 1, 2, 3, AND NC VALVES
 DUANE ARNOLD ENERGY CENTER

P&ID M-181 REVISION 10 PAGE : 62
 SYSTEM : CONTAINMENT ATROSH-HERE MONITORING IST PROGRAM REVISION : 005 , 12/23/83

VALVE NUMBER	P&ID COUR	IST CLASS	VALVE CAT	VALVE SIZE	VALVE TYPE	ACTUATOR TYPE	NORMAL POSITION	TEST	TEST FREQ	MAXIMUM STROKE TIME	MAXIMUM LEAKAGE	RELIEF REQUEST	REMARKS
SV-8105B	E-4	NC	A	1	GL	50	O/FC	AT-1 BIC FST	RR OP OF	NA	NA	VR-32 VR-17	
SV-8106F	E-5	NC	A	1	GL	50	O/FC	AT-1 BIC FST	RR OP OF	NA	NA	VR-32 VR-17	
SV-8105D		NC	A	1	GL	50	O/FC	AT-1 BIC FST	RR OP OF	NA	NA	VR-32 VR-17	
SV-810		NC	A	1	GL	50	O/FC	AT-1 BIC FST	RR OP OF	NA	NA	VR-32 VR-17	
SV-8107B	D-4	NC	A	1	GL	50	O/FC	AT-1 BIC FST	RR OP OF	NA	NA	VR-32 VR-17	
SV-8108A	D-5	NC	A	1	GL	50	O/FC	AT-1 BIC FST	RR OP OF	NA	NA	VR-32 VR-17	
SV-8108H	D-4	NC	A	1	GL	50	O/FC	AT-1 BIC FST	RR OP OF	NA	NA	VR-32 VR-17	
SV-8107G	D-5	NC	A	1	GL	50	O/FC	AT-1 BIC FST	RR OP OF	NA	NA	VR-32 VR-17	
SV-8109B	D-4	NC	A	1	GL	50	O/FC	AT-1 BIC FST	RR OP OF	NA	NA	VR-32 VR-17	

INSERVICE TESTING PROGRAM

PREPARED BY : MUTECH

PROGRAM : FRISIN

IST CLASS 1, 2, 3, AND NC VALVES
DUANE ARNOLD ENERGY CENTER

P&ID M-184 REVISION 05
SYSTEM : MSIV LEAKAGE CONTROL

PAGE 64
IST PROGRAM REVISION : 005 , 12/23/83

VALVE NUMBER	P&ID COOR	IST CLASS	VALVE CAT	VALVE SIZE	VALVE TYPE	ACTUATOR TYPE	NORMAL POSITION	TEST	TEST FREQ	MAXIMUM STROKE TIME	MAXIMUM LEAKAGE	RELIEF REQUEST	REMARKS
MO-8401A	F-3	1	B	1	GA	MO	C	BIC BIO FIT	0P 0P 2Y	020 020			
MO-8401B	F-3	1	B	1	GA	MO	C	BIC BIO FIT	0P 0P 2Y	020 020			
MO-8401C	F-3	1	B	1	GA	MO	C	BIC BIO FIT	0P 0P 2Y	020 020			
MO-8401D	F-3	1	B	1	GA	MO	C	BIC EIO FIT	0P 0P 2Y	020 020			
MO-8402A	F-3	2	B	1	GA	MO	C	BIC BIO FIT	0P 0P 2Y	020 020			
MO-8402B	F-3	2	B	1	GA	MO	C	BIC BIO FIT	0P 0P 2Y	020 020			
MO-8402C	F-3	2	B	1	GA	MO	C	BIC BIO FIT	0P 0P 2Y	020 020			
MO-8402D	F-3	2	B	1	GA	MO	C	BIC BIO FIT	0P 0P 2Y	020 020			
MO-8403A	F-4	2	B	1	GA	MO	C	BIC BIO FIT	0P 0P 2Y	020 020			

IOWA ELECTRIC LIGHT
AND POWER

INSERVICE TESTING PROGRAM

IST CLASS 1, 2, 3, AND NC VALVES
DYANE ARNOLD ENERGY CENTER

PREPARED BY : NUTECH
PROGRAM : PF151M

PAGE : 65
IST PROGRAM REVISION : 05 , 12/23/83

PAID M-184 REVISION 05
SYSTEM : MSIV LEAKAGE CONTROL

VALVE NUMBER	IST CLASS	VALVE CAT	VALVE SIZE	VALVE TYPE	ACTUATOR TYPE	NORMAL POSITION	TEST	TEST FREQ	MAXIMUM STROKE TIME	MAXIMUM LEAKAGE	RELIEF REQUEST	REMARKS
90-04030	F-4	B	1	GA	M0	C	BTC BID PIT	0P 0P 2Y	020 020			
90-04030	F-4	B	1	GA	M0	C	BTC BID PIT	0P 0P 2Y	020 020			
90-04030	F-4	B	1	GA	M0	C	BTC BID PIT	0P 0P 2Y	020 020			

PREPARED BY : NUTECH
PROGRAM : PRISIM

INSERVICE TESTING PROGRAM
ISI CLASS 1, 2, 3, AND NC VALVES
DUANE ARNOLD ENERGY CENTER

IOWA ELECTRIC LIGHT
AND POWER

PAGE : 67
IST PROGRAM REVISION : 005 , 12/23/83

VALVE IST PROGRAM REMARKS

- NOTE 001: There are 89 CRD hydraulic control modules and each CRD hydraulic control module contains one of these valves. The valve number listed in the valve IST program is typical of 89.
- NOTE-002: Valve No. V-18-0118 is as typical valve number from a group of 89 valves. The complete set of numbers is V-18-0118 thru and including V-18-0206.
- NOTE-003: Valve No. V-18-0919 is a typical valve number from a group of 89 valves. The complete set of numbers is V-18-0919 thru and including V-18-1007.
- NOTE-004: Valve No. V-18-1453 is a typical valve number from a group of 89 valves. The complete set of numbers is V-18-1453 thru and including V-18-1541.
- NOTE-005: This valve is verified to operate to its safety-related position during periodic testing of the RCIC Pump.

APPENDIX C

ASME LETTER TO WPPSS RE
SECTION XI, DIVISION, IWA-1100
SCOPE OF SECTION XI, DIVISION 1



The American Society of Mechanical Engineers

United Engineering Center / 345 E. 47th St., New York, N.Y. 10017 / 212 644-7815

February 16, 1978

Date 1/8/79

Revision 0

THE BOILER AND
PRESSURE VESSEL
COMMITTEE

Chairman
L.P. Zick

L. T. Harrold, Supervisor, ISI Programs
Washington Public Power Supply System
PO Box 968
3000 George Washington Way
Richland, WA 99352

Vice-Chairman
W.L. HARDING

Secretary
W.B. HOYT

Subject: Section XI, Division 1, IWA-1100
Scope of Section XI, Division 1

C.W. ALLISON
B.W. BACE
R.D. BONNER
R.J. BOSNAK
P.M. BRISTER
H.M. CANAVAN
R.J. CEPLUCH
L.J. CHOCKIE
W.E. COOPER
W.D. DOTY
G.E. FRATCHEL
R.C. GRIFFIN
S.F. HARRISON
E.J. HEMZY
W.P. JOHNSON
E.L. KUMMLER
E.L. KIME
J.E. LATTAN
J. LICOFF
J.R. MACKAY
R.H. MOELLER
T.E. NORTHUP
C.E. RAWLINS
W.R. SMITH SR.
W.E. SOMERS

Reference: Your letter of September 19, 1977 (APO 77-59)
ASME File #: BC 77-666
NI 77-371

Dear Mr. Harrold:

Your inquiry and our response are as stated below:

QUESTION:

Is it the intent of Subarticle IWA-1100 that the rules and requirements of Section XI, Division 1 for inservice inspection of Class 1, 2 & 3 pressure retaining components (and their supports) be applied only to water and steam systems in light water cooled nuclear power plants?

REPLY:

Systems containing other than steam or water were not originally considered by the Committee in formulating the rules in Section XI; they may, however, be included for further consideration and for revisions to future editions of Section XI. The requirements shown in Section XI, Article IWA-1000 on Scope and Responsibility, specifically Paragraph IWA-1400, requires the Owner of the nuclear plant to determine the appropriate Code, Class or Classes for each component of the nuclear power plant to be examined according to Section XI rules.

Very truly yours,

Kenneth I. Baron,
Assistant Secretary

/s/

DETAILED SUMMARY OF IST PROGRAM CHANGES

This attachment addresses, in detail, the changes between Revision 4 and Revision 5 of the Duane Arnold Energy Center Inservice Testing (IST) Program for Pumps and Valves.

1. Format/editorial changes - The format of the program is modified to conform to the standard DAEC format for controlled documents. As a result of this transformation, several editorial changes of no technical consequence are added.
2. Effective date - The effective date of the program is extended to the end of the current inspection interval.
3. Relief Request PR-2 - This relief request, which pertains to measurement of bearing temperatures of the Emergency Service Water (ESW) pumps, was expanded as requested.
4. Relief Request PR-3 - This relief request, which pertains to measurements of vibration and bearing temperatures of the HPCI and RCIC pumps, is changed to include a commitment for future compliance.
5. Relief Request PR-4 - This relief request, which pertains to the calculation of suction pressure for various pumps, is changed by the addition of the Standby Liquid Control (SBLC) pumps.
6. Relief Request PR-8 - This new relief request provides for the option of measuring pump vibration in units of velocity as well as displacement.
7. Screen Wash Pumps - The screen wash pumps are a new addition to the program. Relief Request PR-9 is submitted to account for existing system design details that may not conform to Code requirements.
8. Relief Request PR-10 - Based on an ASME Code interpretation, the test acceptance criteria for testing of the diesel fuel oil transfer pump is afforded an optional treatment.
9. Pressure isolation valve testing - In compliance with an NRC request, leaktesting of pressure isolation valves is added to the Program. Table 3.1-1 and Appendix B are revised accordingly.
10. Several relief requests are voided per NRC request.
11. Excess flow check valves - Relief Request VR-8 is rewritten to eliminate the requirement for quantitative leaktesting of the excess flow check valves.
12. Relief Request VR-11 - Typographical correction -- CV-4327E replaced by CV-4327H. The tabulation in Appendix B is corrected accordingly.
13. Relief Request VR-13 - This relief request, which pertains to testing of CRD system valves, is expanded to provide further technical justification for the request.

14. Relief Request VR-29 - This request is corrected as follows:
CV-3729 & CV-4311 are deleted: test is done in correct direction
CV-4301 & CV-4639 are deleted: these are not gate valves
CV-3728 & MOV-2400 are added; inadvertently omitted from Revision 4
15. Relief Request VR-32 - Four (4) recently installed Post-Accident Sampling System (PASS) valves are added (SV-4594 A & B and SV-8772 A & B)
16. Core Spray check valves - Relief request VR-33 is submitted shifting the test frequency of CV-2118 and CV-2138 from quarterly to each refueling.
17. ESW valves CV-1956 A & B - These valves have no remote position indication, thus, position indication testing is deleted. Furthermore, the stroke time measurement is replaced by a qualitative evaluation of valve operation. (See Relief Request VR-35)
18. Excess flow check valves - Position indication tests are added.
19. CRD valves CV-1849 and CV-1850 - These valves have no individual position indicators, thus, position indication testing is deleted.
20. CRD valves CV-1859 and CV-1867 - These valves have been replaced by CV-1859 A & B and CV-1867 A & B as a result of a recent backfit. These additional valves are added to the list. Note: The next revision to the program will eliminate CV-1859 and CV-1867 from the listing.
21. Relief Request VR-32 - Four (4) PASS valves are added to this relief request.
22. Relief Request VR-34 - The evaluation of stroke time test results for quick-acting solenoid valves is revised.
23. ESW check valves - The test requirements for valves V-46-18 and V-46-21 are changed to add a closure test and extend the test frequency to once per operating cycle.
24. Well water valves - Requirements for position indicator tests are added for valves CV-5703 A & B and CV-5729 A & B.

25. Valve categories changed as follows:

PSV 1988	B/C vs C	CV 1906	A/C vs C
PSV 2068	B/C vs C	CV 1905A	A/B vs C
PSV 4400	B/C vs A/C	PSV 1911	B/C vs C
PSV 4401	B/C vs A/C	PSV 1952	B/C vs C
PSV 4402	B/C vs A/C	CV-2002	A/C vs C
PSV 4403	B/C vs A/C	MO 2003	A/B vs B
PSV 4404	B/C vs A/C	PSV 2043	B/C vs C
PSV 4405	B/C vs A/C	CV 2118	A/C vs C
PSV 4406	B/C vs A/C	CV 2138	A/C vs C
PSV 4407	B/C vs A/C	PSV 2109	B/C vs C
PSV 4439 A	B/C vs C	PSV 2129	B/C vs C
PSV 4439 B	B/C vs C	PSV 2223	B/C vs C
PSV 4439 C	B/C vs C	PSV 2228	B/C vs C
PSV 4439 D	B/C vs C	PSV 2301	B/C vs C
PSV 4439 E	B/C vs C	PSV 2474	B/C vs C
PSV 4439 F	B/C vs C	V-24-8	C vs A/C
		V-24-12	C vs A/C
		PSV 2501	B/C vs C
		PSV 2607	B/C vs C
		PSV 2609	B/C vs C

STATUS OF CONTINUING ENGINEERING EVALUATION OF THE IST PROGRAM

During the first year of implementing Revision 4 of the DAEC Inservice Testing (IST) Program with the computer trending system, the DAEC engineering staff has been conducting an ongoing review of the Program. As a result, several items of operational concern have been identified and are being, or have been resolved. A report of the final resolution of all items will be described, in detail, as part of the 180-day response to NRC's Safety Evaluation Report (SER). Each of these concerns are discussed below.

1. Instrument Sensing Lines

ASME Section XI, Paragraph IWP-4210, requires that tubing leading to pressure sensing instruments shall be installed or vented such that the error related to the static head of the water in the tubing does not impact the test data. A detailed evaluation of the routing of various sensing lines for instruments used in the IST Program has recently been completed. The results of this study indicate that several procedures require changes to ensure that all instrument sensing lines are properly filled during pump testing. These changes are currently being implemented.

2. Instrument Ranges

A detailed study is currently underway regarding IST instrumentation compatibility with ASME Section XI, Table IWP-4110-1, and Paragraph IWP-4120. As a result of a preliminary review of this study, it appears that several instruments do not strictly conform to the requirements of the Code. Although Relief Request PR-7 references deviation with respect to accuracy, recent information suggests that, in some cases, instruments do not meet the maximum range criteria.

3. Check Valves

The IST Program requires that the diesel fuel transfer pump check valves be exercised in the open and closed direction every three (3) months. During pump flow tests, the valves are exercised in the open direction; however, there is no definitive written procedure to verify the check valves stroked to the closed position. A procedure has been developed and is being implemented to verify valve closure. Since there have been no spurious alarms associated with the day tank level, it can be deduced that these check valves are operating properly.

4. Technical Specifications

During the development of the Program with the NRC staff and their contractors, there was an agreement made to review the DAEC Technical Specifications according to "NRC Staff Guidelines for Excluding Exercising (Cycling) Tests of Certain Valves During Plant Operation." There is no record indicating that such a review has ever been conducted. This review will be completed as soon as practical.

Iowa Electric recognizes the importance of the DAEC IST Program and will continue to monitor its implementation for both technical adequacy and content. Problems, when identified, will be resolved on a priority basis.