



UNITED STATES
NUCLEAR REGULATORY COMMISSION

WASHINGTON, D.C. 20555-0001

December 1, 1994

Licensee: Georgia Power Company
Facility: Vogtle Electric Generating Plant, Units 1 and 2
SUBJECT: SUMMARY OF SEPTEMBER 28-29, 1994 TRIP TO VOGTLE ELECTRIC GENERATING PLANT, UNITS 1 AND 2

On September 28, 1994, Messrs. F. Allenspach, J. Zimmerman, and D. Hood of NRR, visited the Vogtle Electric Generating Station, Units 1 and 2 (Vogtle), to discuss management responsibilities of Georgia Power Company (GPC or the licensee) and the supporting roles of Southern Nuclear Operating Company, Inc. (Southern Nuclear or SNC) and Southern Company Services (SCS). All three companies are subsidiaries of the Southern Company. In addition to being a routine NRR oversight visit, the visit was part of NRR's continuing review of the licensee's application for amendments, submitted to the NRC September 18, 1992, that would transfer operating authority of Vogtle to SNC. The visit was also part of NRR's review of the FSAR as updated in April 1994.

Organizational charts and other information received by the NRC members during this trip are enclosed.

Presently, and until NRC approval of the proposed license amendments, the organizational structure for the operation of Vogtle is in the second of three planned phases whereby operation will eventually be transitioned from Georgia Power Company to SNC. In this second phase, some GPC management personnel located at the corporate offices in Birmingham, Alabama, with responsibility for Vogtle operations, also hold management positions within SNC. These dual positions are shown in the enclosure as (1) FSAR Figure 13.1.1-1 which depicts the GPC nuclear operations organization and the SNC support organization, and (2) FSAR Figure 13.1.1-2 which depicts the SNC technical support organization. In this second phase, personnel at the Vogtle site (the General Manager-Nuclear Plant and those reporting to him) are all members of GPC only. FSAR Figure 13.1.2-1 shows this portion of GPC's nuclear operations organization. FSAR Figure 17.2.1-1 is an organizational chart for Quality Assurance during plant operations. Each of these four figures was updated by FSAR Revision 4 in April 1994.

At the Vogtle site, the NRC members first met with the NRC regional inspectors and discussed the inspector's day-to-day observations regarding the control of the operation of the Vogtle facility by GPC personnel, the organizational structure at the site, and the support provided to the facility by SNC and SCS employees. Subsequently, Messrs. Allenspach and Hood visited various GPC and SNC personnel and discussed their present responsibilities and organization. Specific contacts were:

- S. Kitchens, GPC, Assistant General Manager-Nuclear Support
- J. Swartzwelder, GPC, Manager-Outage and Planning
- J. Gasser, GPC, Vogtle Unit 1 Superintendent
- K. Holmes, GPC, Manager-Operations
- W. Burmeister, GPC, Manager-Engineering Support
- C. Christiansen, SNC, Safety Audit and Engineering Review (SAER) Supervisor

9412120066 941201
PDR ADOCK 05000423
P PDR

NRC FILE CENTER COPY

Handwritten initials and signature

- B. Beasley, GPC, General Manager - Nuclear Plant (Vogtle)
- J. Robinson, SNC, Manager of SAER - (Mr. Robinson is normally located in Birmingham, Alabama, but was at the Vogtle site for operator requalification training)

On September 29, 1994, the NRC members visited the SNC corporate office in Birmingham, Alabama, to continue these discussions with various SNC, GPC, and SCS managers. Specific individuals contacted were:

- J. Bailey, SNC, Manager of Licensing
- W. Hairston, III, SNC President and CEO; GPC Executive Vice President
- J. Woodard, SNC Executive Vice President and GPC Senior Vice President
- C. McCoy, SNC Vice President and GPC Vice President-Vogtle Project
- J. Everette, SNC, Vice President, Administrative Services
- D. Lloyd, SCS, Manager of Engineering-Vogtle
- B. George, SNC, Manager of Licensing Services (representing L. Long, SNC Vice President, Technical Services)

During the visit, the NRC staff confirmed that the positions for control of the operation of the Vogtle facility are occupied and the organization is functioning as described in Chapter 13 of the updated FSAR (Revision 4, April 1994). One exception for the site organization is that the position of Assistant General Manager, Plant Operations, is vacant and presently there are no plans to fill this position. From their discussions and observations, the NRC members concluded that reporting and activities related to plant operations are subject to the approval of Messrs. Beasley and McCoy, both of whom are GPC employees. Moreover, general discussions and observations confirmed that GPC's responsibility with respect to day-to-day operation is being exercised in accordance with FSAR Section 13.1.2.2.1 which states:

The GPC general manager-nuclear plant (Vogtle) (GMNP) is responsible for the direct management of the plant, including industrial relations, planning, coordination, direction of operation, training, maintenance, refueling, and technical activities. The GMNP is responsible for compliance with the requirements of the operating license, Technical Specifications, and quality assurance program.

/s/

Darl S. Hood, Senior Project Manager
 Project Directorate II-3
 Division of Reactor Projects -I/II
 Office of Nuclear Reactor Regulation

Docket Nos. 50-423 and 50-424

Enclosure: Licensee Handouts

cc w/encl: See next page

DOCUMENT NAME: G:\VOGTLE\HEARING\TRIP.RPT

To receive a copy of this document, indicate in the box: "C" = Copy without attachment/enclosure "E" = Copy with attachment/enclosure "N" = No copy

OFFICE	LA:PD23:DRPE	E	PM:PD23:DRPE	E	RPEB:NRR	E	PM:PD23:DRPE	C	D:PD23:DRPE
NAME	CNorsworthy <i>cn</i>		DHood:dt <i>DH</i>		FALLenspach		JZimmerman <i>JS</i>		HBerkow <i>H</i>
DATE	12/1/94		11/1/94		12/1/94		11/1/94		11/1/94

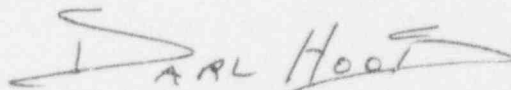
- B. Beasley, GPC, General Manager - Nuclear Plant (Vogtle)
- J. Robinson, SNC, Manager of SAER - (Mr. Robinson is normally located in Birmingham, Alabama, but was at the Vogtle site for operator requalification training)

On September 29, 1994, the NRC members visited the SNC corporate office in Birmingham, Alabama, to continue these discussions with various SNC, GPC, and SCS managers. Specific individuals contacted were:

- J. Bailey, SNC, Manager of Licensing
- W. Hairston, III, SNC President and CEO; GPC Executive Vice President
- J. Woodard, SNC Executive Vice President and GPC Senior Vice President
- C. McCoy, SNC Vice President and GPC Vice President-Vogtle Project
- J. Everette, SNC, Vice President, Administrative Services
- D. Lloyd, SCS, Manager of Engineering-Vogtle
- B. George, SNC, Manager of Licensing Services (representing L. Long, SNC Vice President, Technical Services)

During the visit, the NRC staff confirmed that the positions for control of the operation of the Vogtle facility are occupied and the organization is functioning as described in Chapter 13 of the updated FSAR (Revision 4, April 1994). One exception for the site organization is that the position of Assistant General Manager, Plant Operations, is vacant and presently there are no plans to fill this position. From their discussions and observations, the NRC members concluded that reporting and activities related to plant operations are subject to the approval of Messrs. Beasley and McCoy, both of whom are GPC employees. Moreover, general discussions and observations confirmed that GPC's responsibility with respect to day-to-day operation is being exercised in accordance with FSAR Section 13.1.2.2.1 which states:

The GPC general manager-nuclear plant (Vogtle) (GMNP) is responsible for the direct management of the plant, including industrial relations, planning, coordination, direction of operation, training, maintenance, refueling, and technical activities. The GMNP is responsible for compliance with the requirements of the operating license, Technical Specifications, and quality assurance program.



Darl S. Hood, Senior Project Manager
Project Directorate II-3
Division of Reactor Projects -I/II
Office of Nuclear Reactor Regulation

Docket Nos. 50-423 and 50-424

Enclosure: Licensee Handouts

cc w/encl: See next page

Georgia Power Company

Vogtle Electric Generating Plant

cc:

Mr. J. A. Bailey
Manager - Licensing
Georgia Power Company
P. O. Box 1295
Birmingham, Alabama 35201

Mr. J. B. Beasley
General Manager, Vogtle Electric
Generating Plant
P. O. Box 1600
Waynesboro, Georgia 30830

Regional Administrator, Region II
U. S. Nuclear Regulatory Commission
101 Marietta Street, NW., Suite 2900
Atlanta, Georgia 30323

Office of Planning and Budget
Room 615B
270 Washington Street, SW.
Atlanta, Georgia 30334

Office of the County Commissioner
Burke County Commission
Waynesboro, Georgia 30830

Mr. J. D. Woodard
Senior Vice President -
Nuclear Operations
Georgia Power Company
P. O. Box 1295
Birmingham, Alabama 35201

Mr. C. K. McCoy
Vice President - Nuclear
Vogtle Project
Georgia Power Company
P. O. Box 1295
Birmingham, Alabama 35201

Harold Reheis, Director
Department of Natural Resources
205 Butler Street, SE. Suite 1252
Atlanta, Georgia 30334

Attorney General
Law Department
132 Judicial Building
Atlanta, Georgia 30334

Mr. Ernie Toupin
Manager of Nuclear Operations
Oglethorpe Power Corporation
2100 East Exchange Place
Tucker, Georgia 30085-1349

Charles A. Patrizia, Esquire
Paul, Hastings, Janofsky & Walker
12th Floor
1050 Connecticut Avenue, NW.
Washington, DC 20036

Arthur H. Domby, Esquire
Troutman Sanders
NationsBank Plaza
600 Peachtree Street, NE.
Suite 5200
Atlanta, Georgia 30308-2216

Resident Inspector
U. S. Nuclear Regulatory Commission
P. O. Box 572
Waynesboro, Georgia 30830

December 1, 1994

DISTRIBUTION

w/enclosure

~~Docket File~~

PUBLIC

PD #23 Reading

B. Boger, RII

D. Hood

F. Allenspach

C. Barth

P. Skinner, RII

D. Wheeler

J. Rogge, RI

M. Young

J. Zimmerman

M. Sinkule, RII

w/o enclosure

W. Russell/F. Miraglia

R. Zimmerman

OGC

S. Varga

J. Zwolinski

E. Jordan, D/AEOD

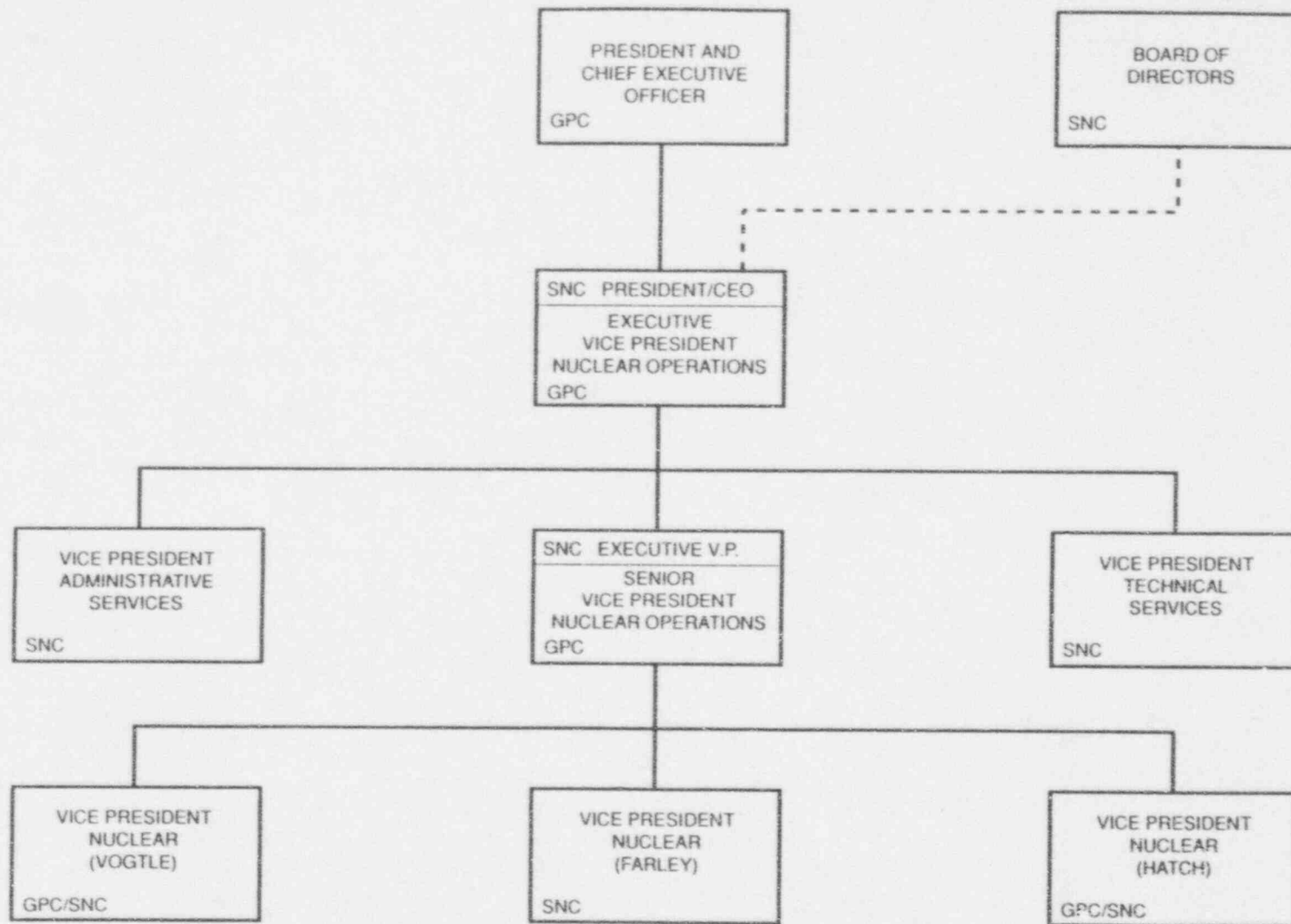
ACRS (4)

G. Tracy, EDO

B. Boger, RII

Enclosure

FSAR FIGURES
AND
LICENSEE HANDOUTS



REV 4 4/94
REV 1 3/91

----- SNC MATTERS ONLY

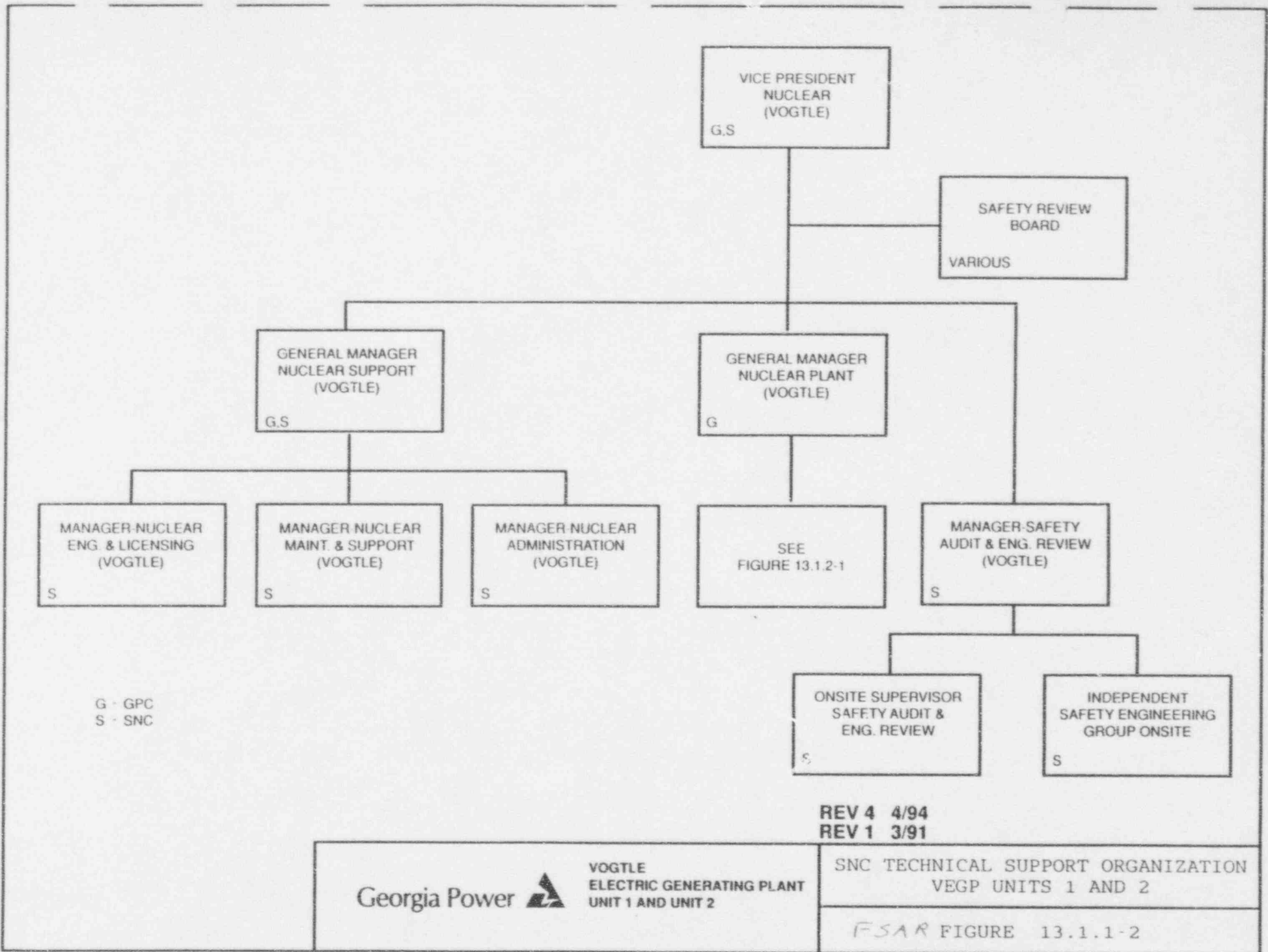
Georgia Power

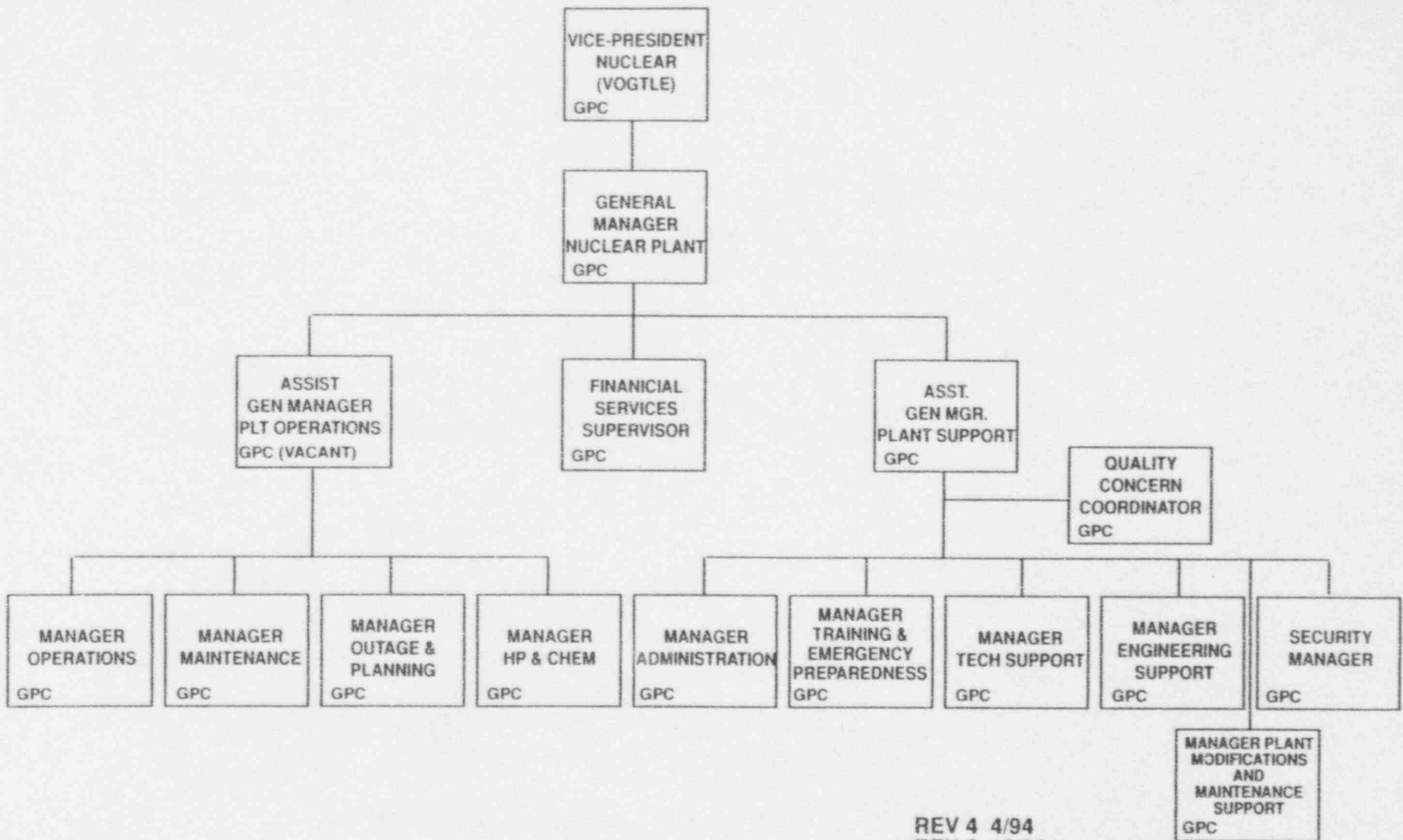


VOGTLE
ELECTRIC GENERATING PLANT
UNIT 1 AND UNIT 2

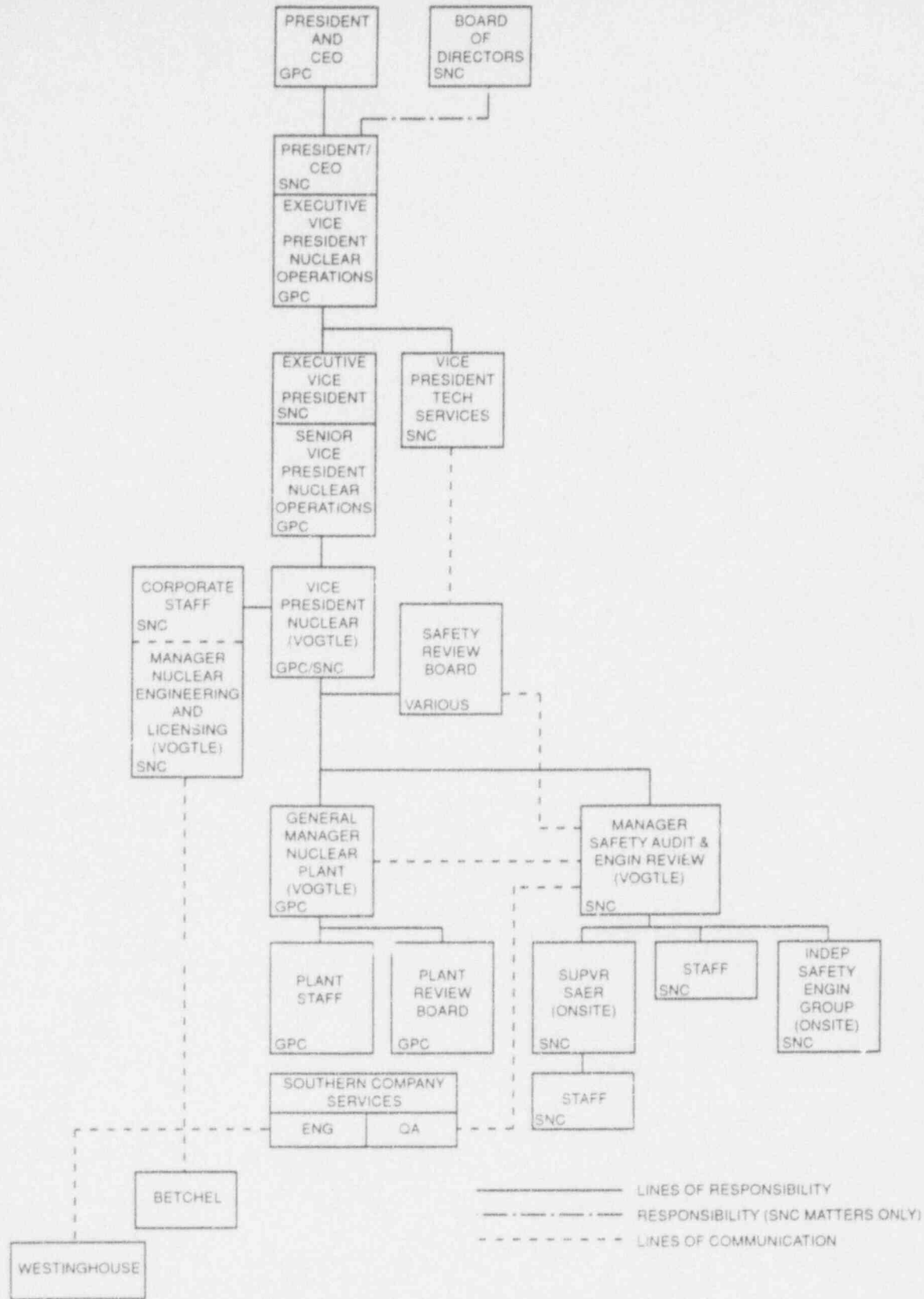
GPC NUCLEAR OPERATIONS ORGANIZATION
AND SNC SUPPORT ORGANIZATION
VEGP UNITS 1 AND 2

FSAR FIGURE 13.1.1-1



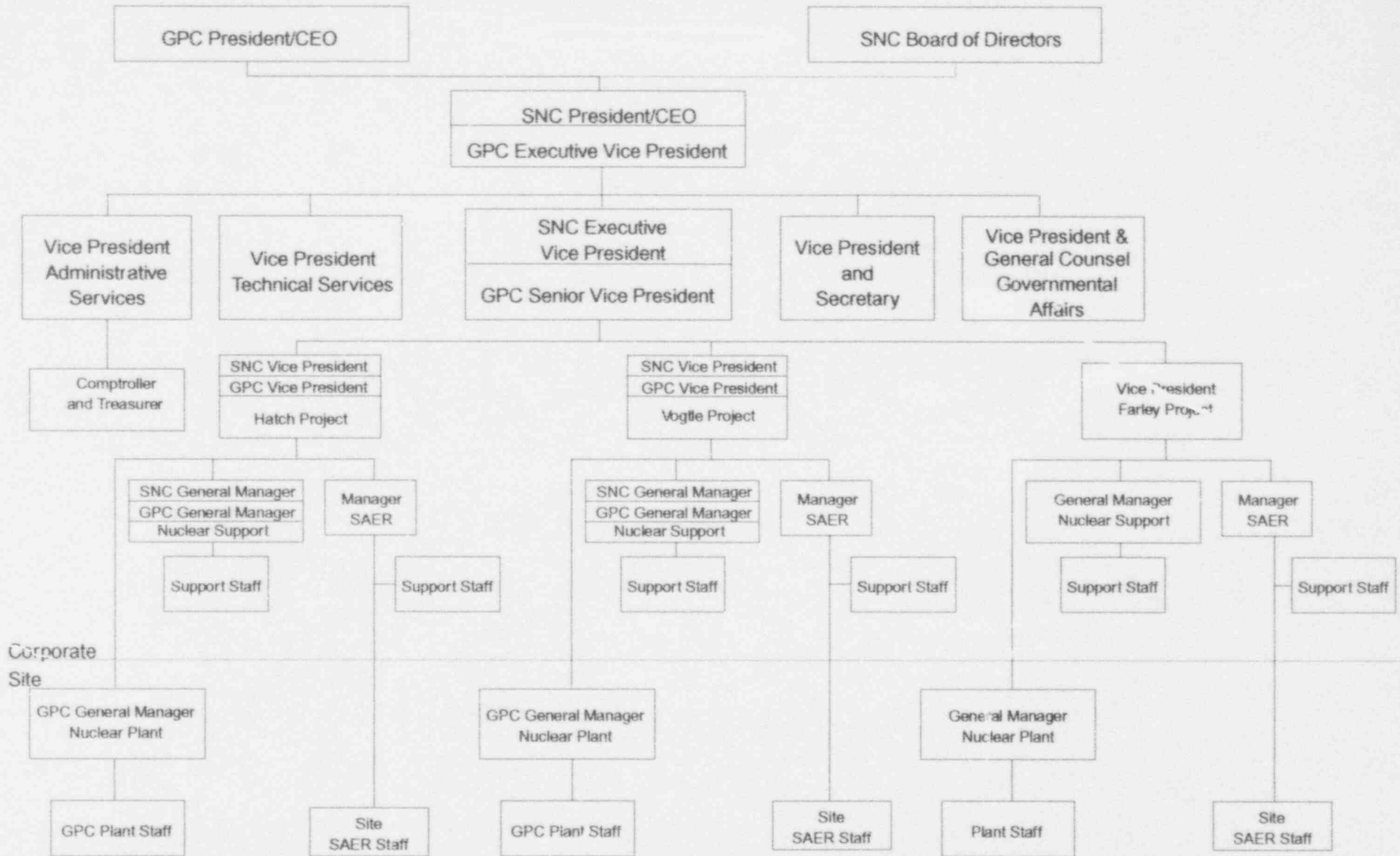


REV 4 4/94
 REV 3 12/92
 REV 1 3/91



REV 4 4/94
REV 1 3/91

JUNE 1994 SOUTHERN SYSTEM NUCLEAR PLANT ORGANIZATION

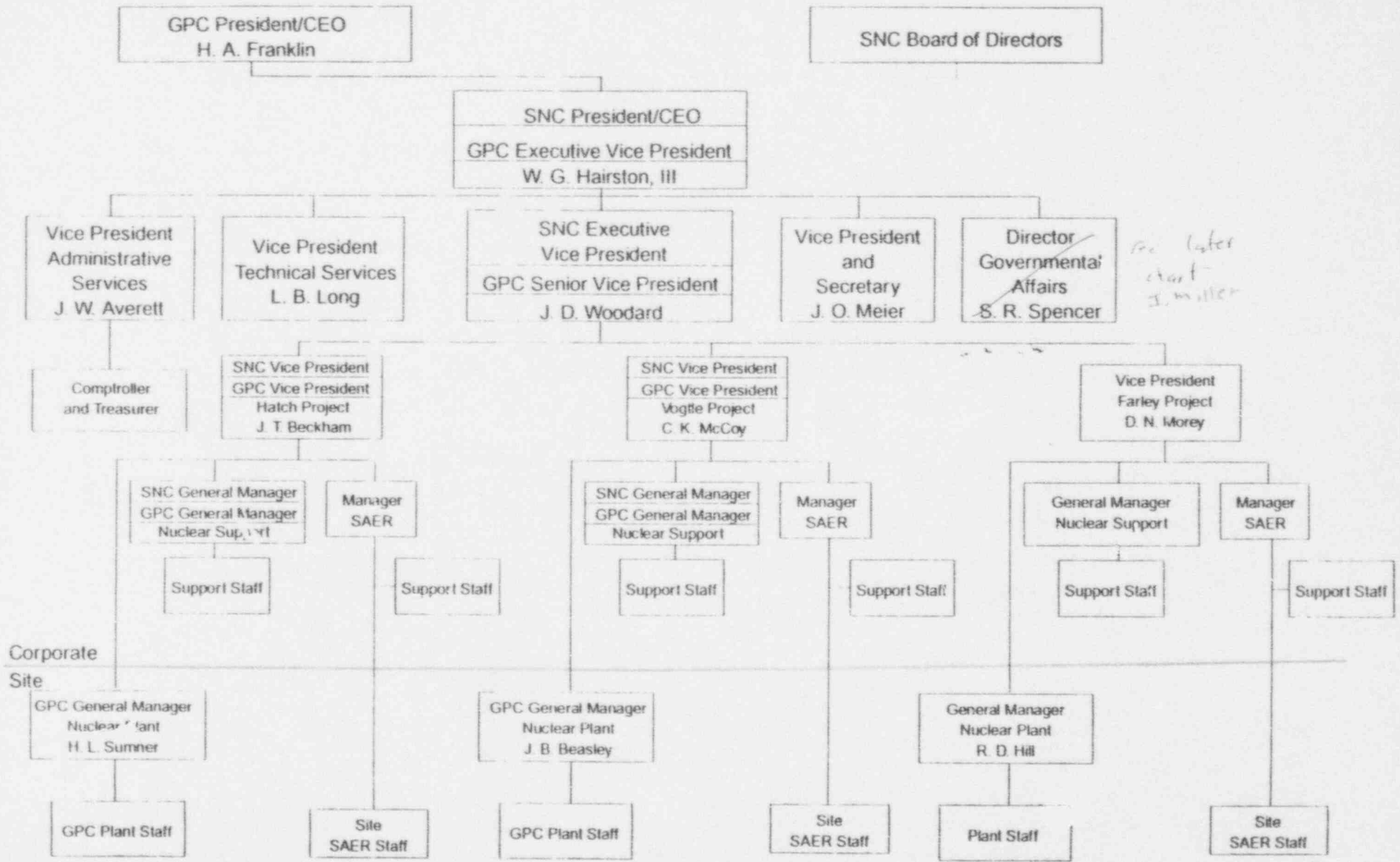


Corporate
Site

Note: All positions are SNC unless otherwise noted.

Legend	
SNC	- Southern Nuclear Operating Company
GPC	- Georgia Power Company
SAER	- Safety Audit and Engineering Review
-----	- Denotes SNC Reporting

FEBRUARY 1994 SOUTHERN SYSTEM NUCLEAR PLANT ORGANIZATION



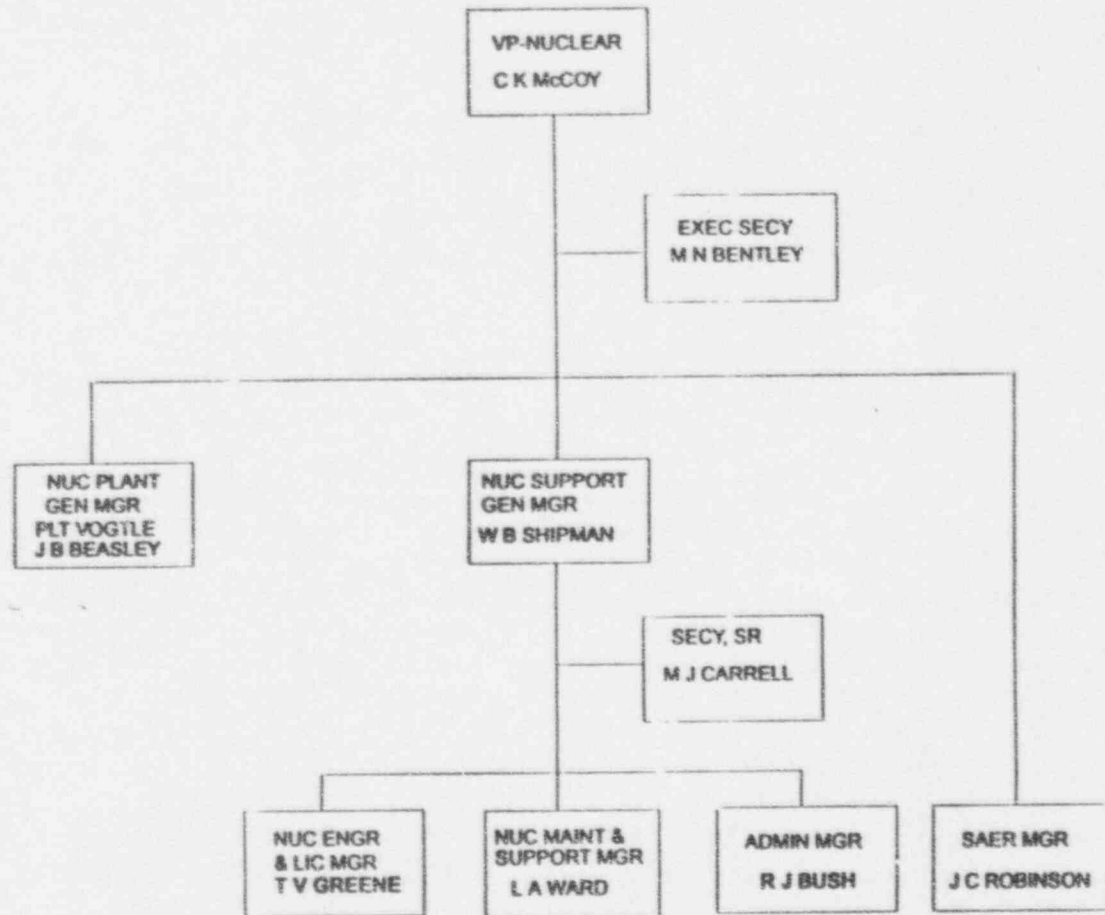
*see later chart
J. Miller*

Corporate
Site

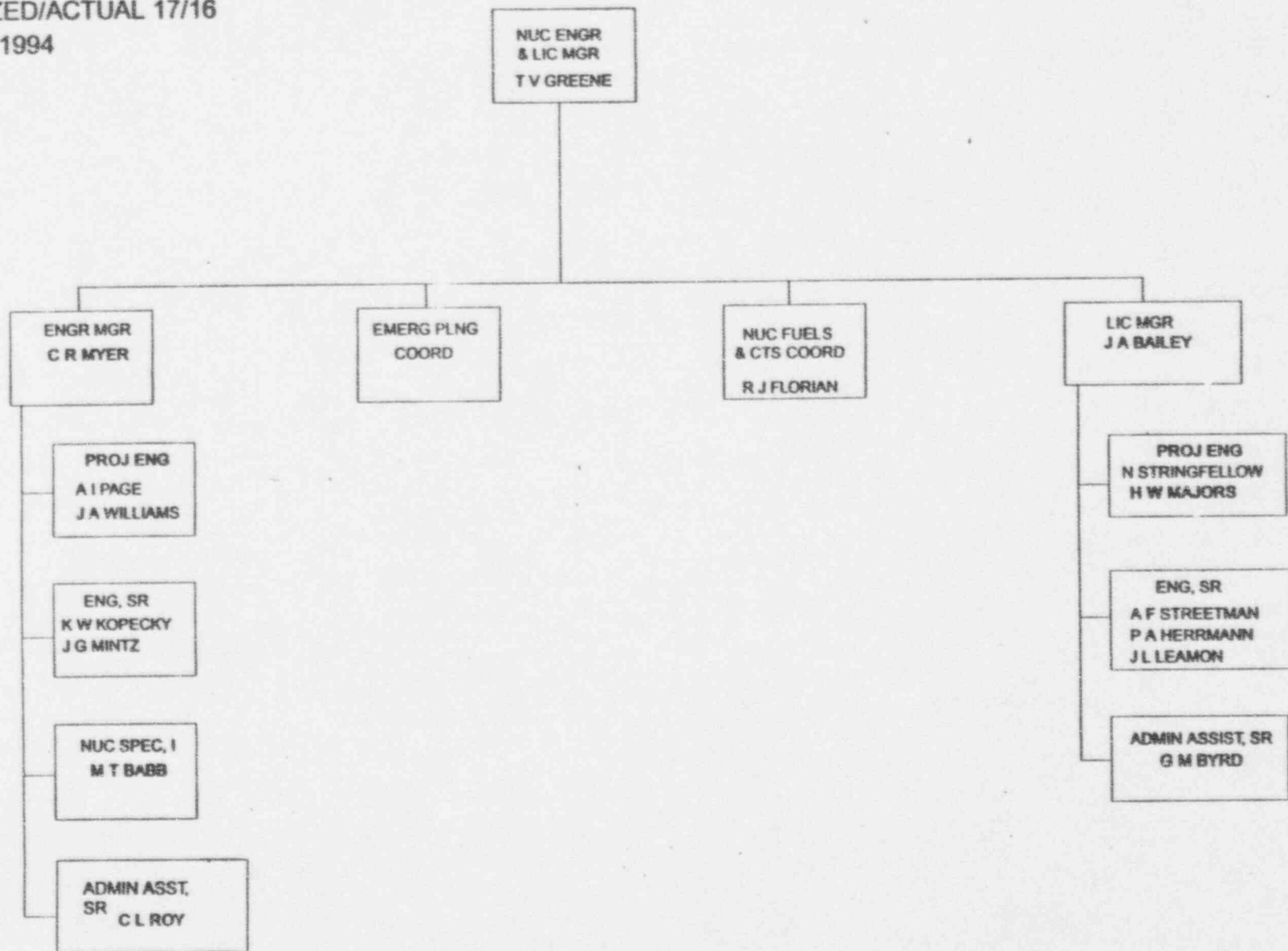
Legend
 SNC - Southern Nuclear Operating Company
 GPC - Georgia Power Company
 SAER - Safety Audit and Engineering Review
 ----- Denotes SNC Reporting

Note: All positions are SNC unless otherwise noted

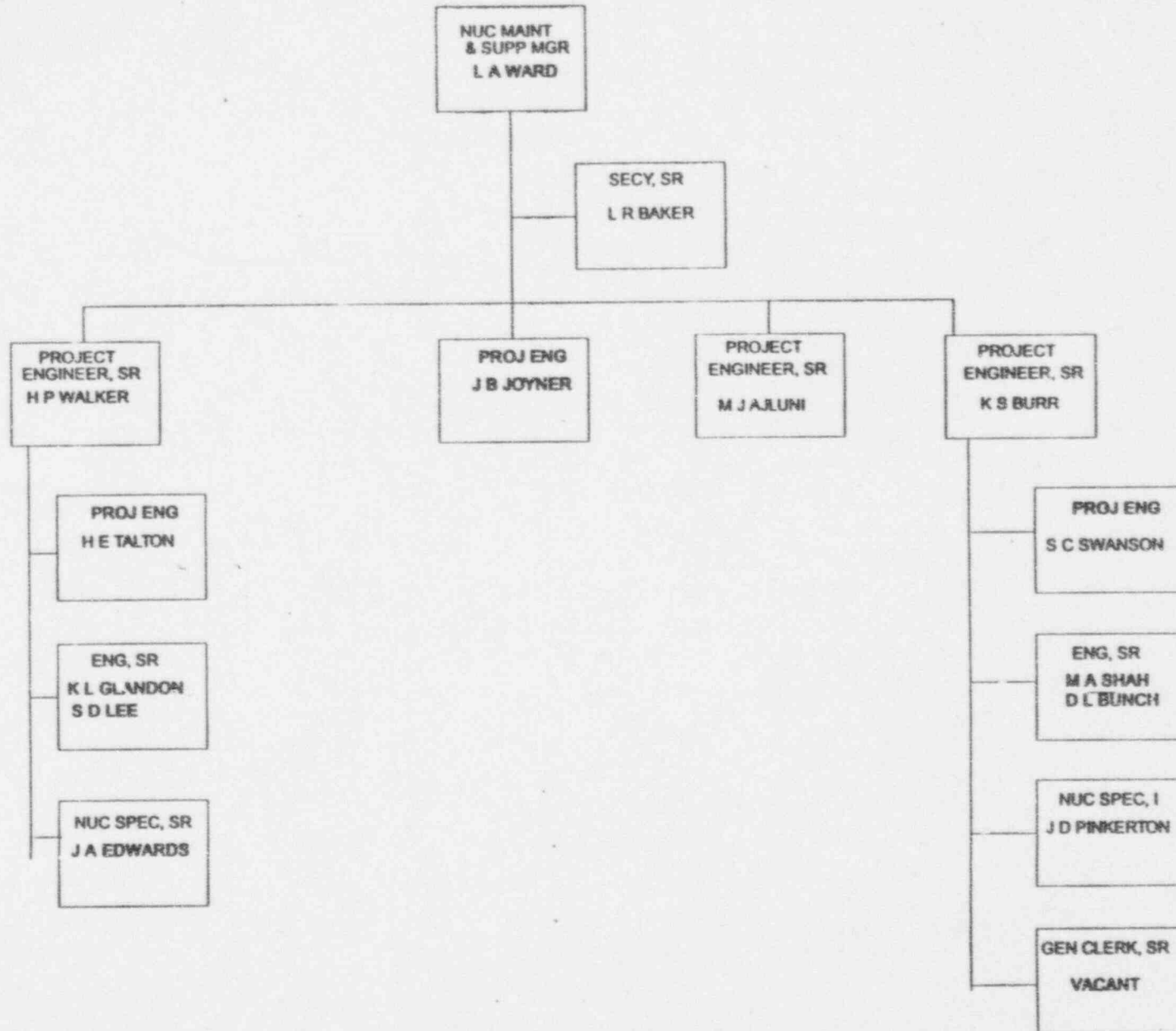
VOGTLE PROJECT SUPPORT
AUTHORIZED/ACTUAL 78/72
JANUARY 1994



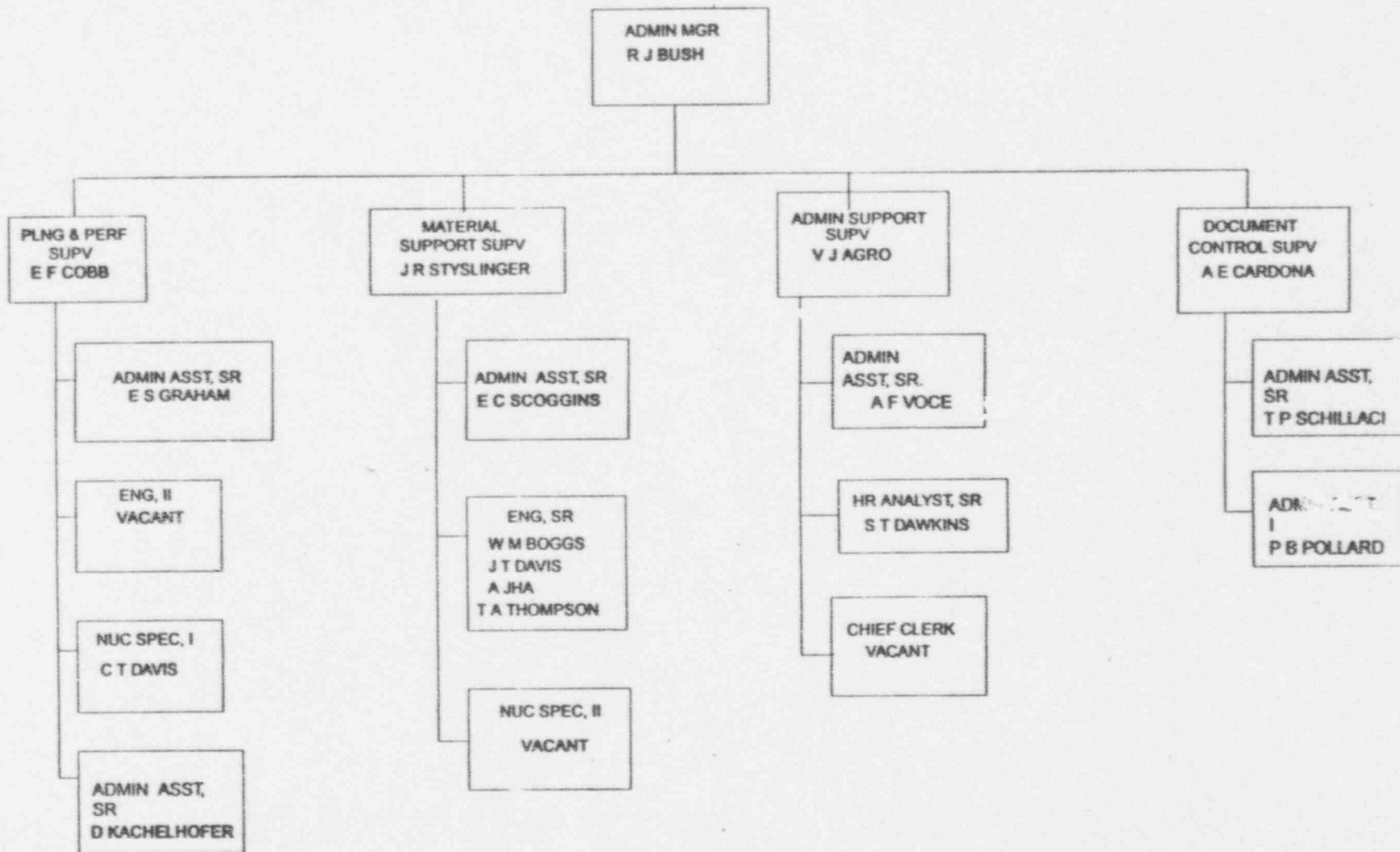
VOGTLE PROJECT SUPPORT
ENGINEERING AND
LICENSING
AUTHORIZED/ACTUAL 17/16
JANUARY 1994



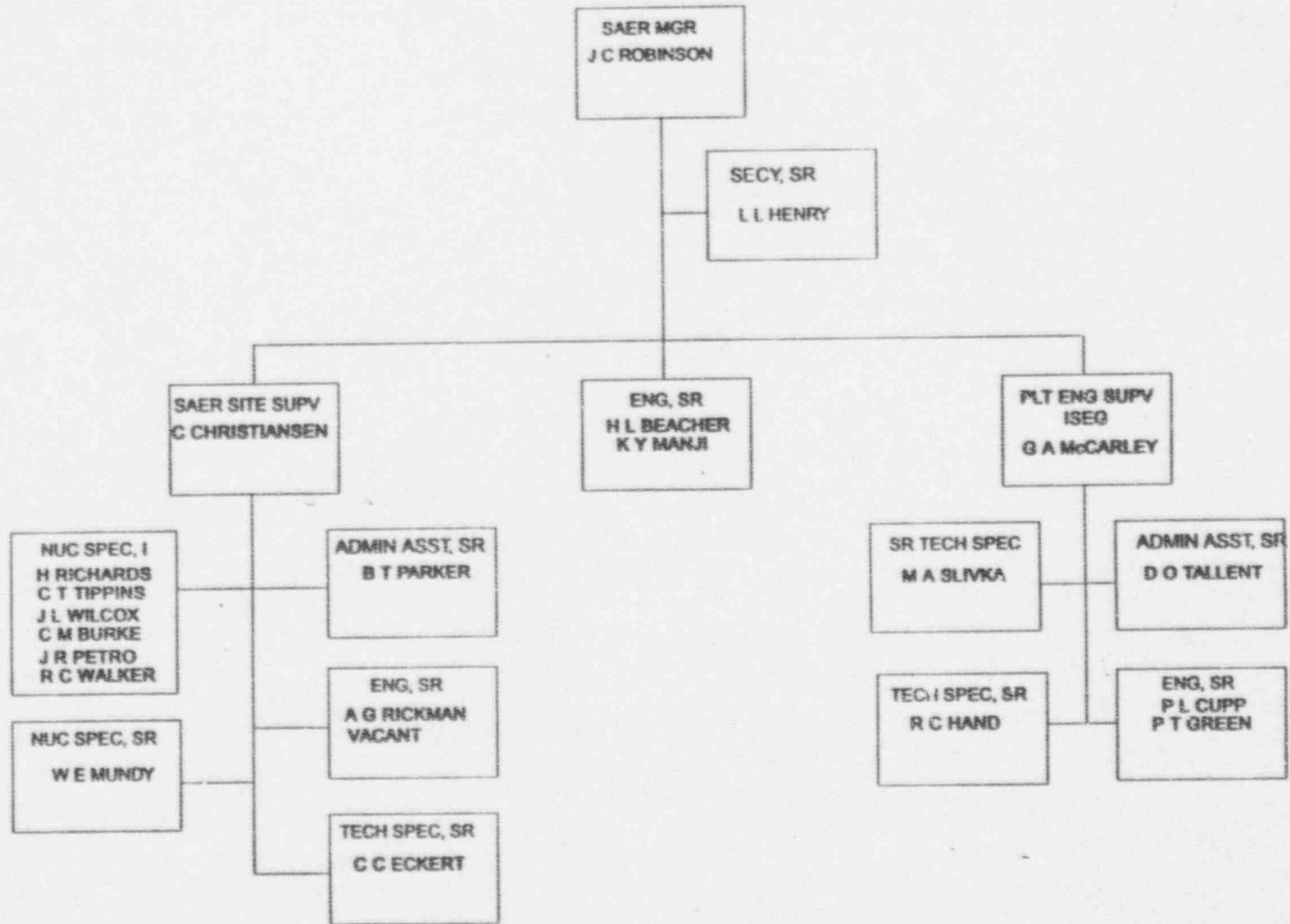
VOGTLE PROJECT SUPPORT
MAINTENANCE AND SUPPORT
AUTHORIZED/ACTUAL 15/14
JANUARY 1994



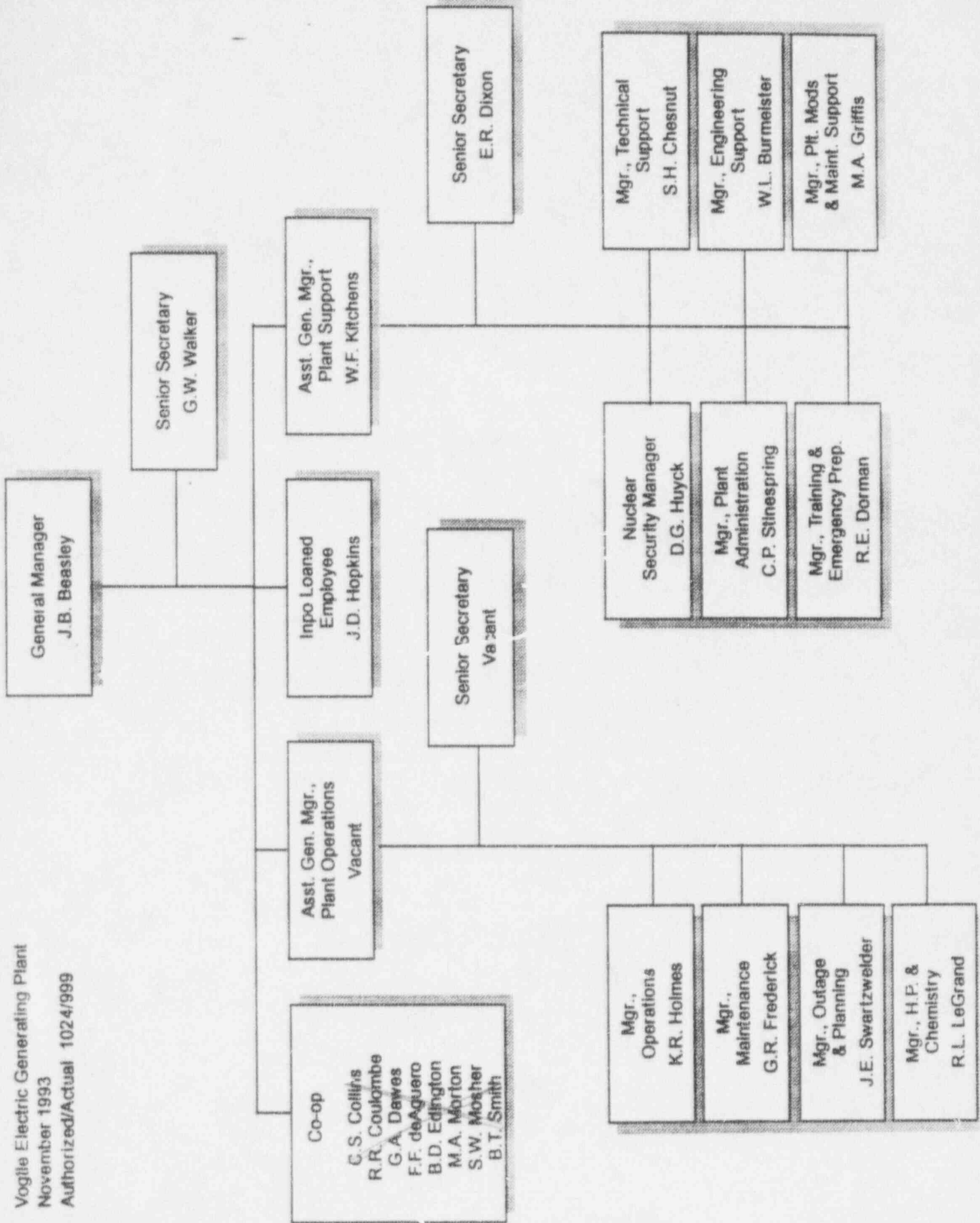
VOGTLE PROJECT SUPPORT
ADMINISTRATION
AUTHORIZED/ACTUAL 20/17
JANUARY 1994

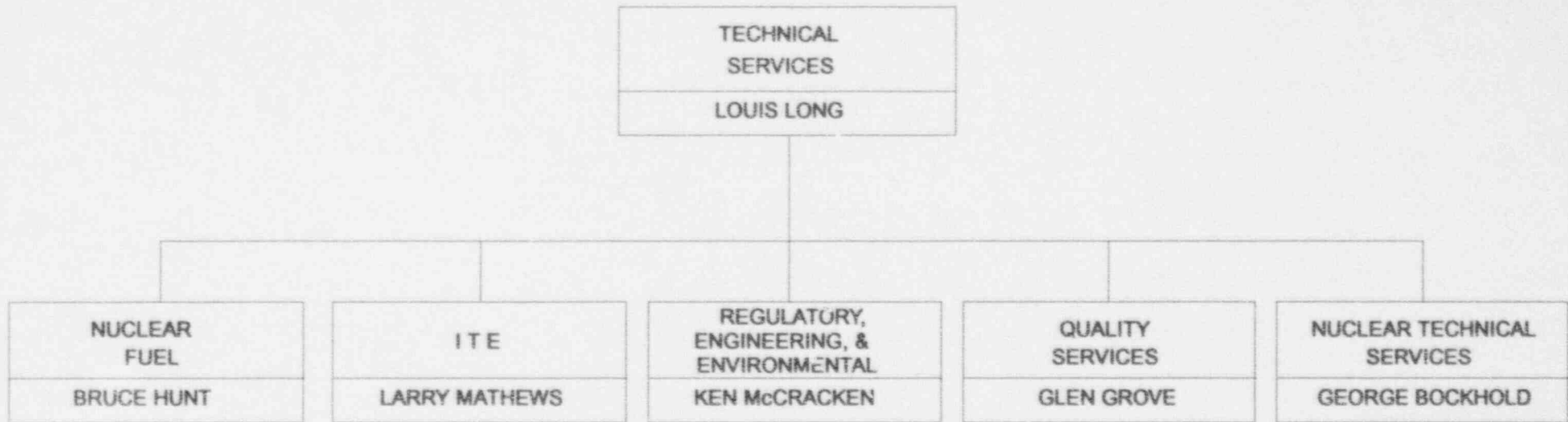


VOGTLE PROJECT SUPPORT
 SAER AND ISEG
 AUTHORIZED/ACTUAL 22/21
 JANUARY 1994

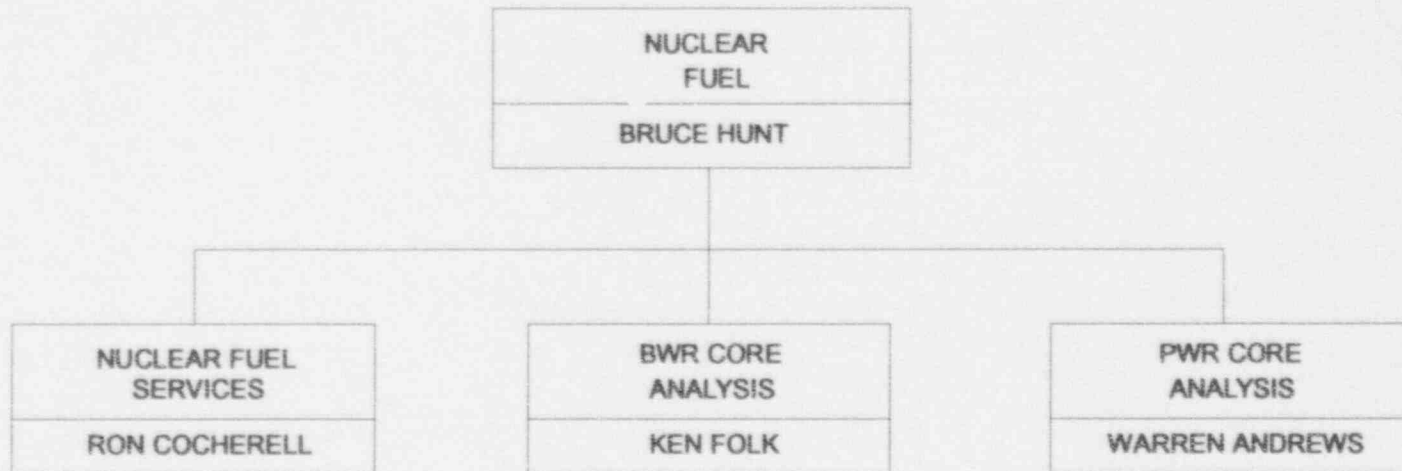


Vogtle Electric Generating Plant
 November 1993
 Authorized/Actual 1024/999





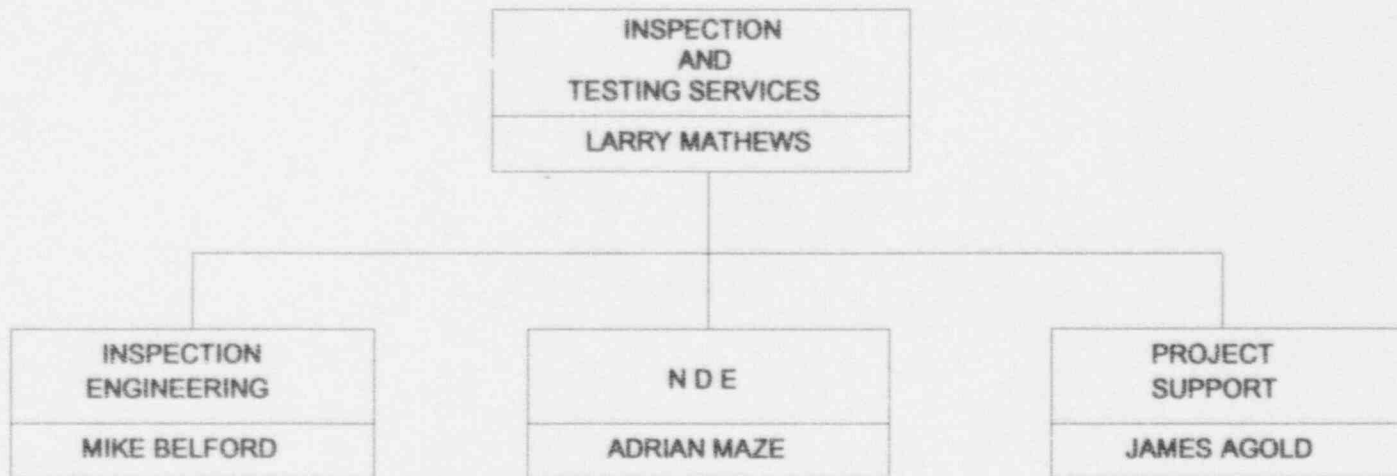
- SPECIAL SERVICES
- UNIQUE EXPERTISE AREAS
- FOCUSED SNC RESPONSE TO GENERIC REGULATORY AND INDUSTRY ISSUES



- PROCUREMENT
- CONTRACT ADMINISTRATION
- QA
- ECONOMICS
- FUEL PERFORMANCE

- FUEL CYCLES
- TARGET LOADING PATTERNS
- OPERATIONS SUPPORT
- LICENSING

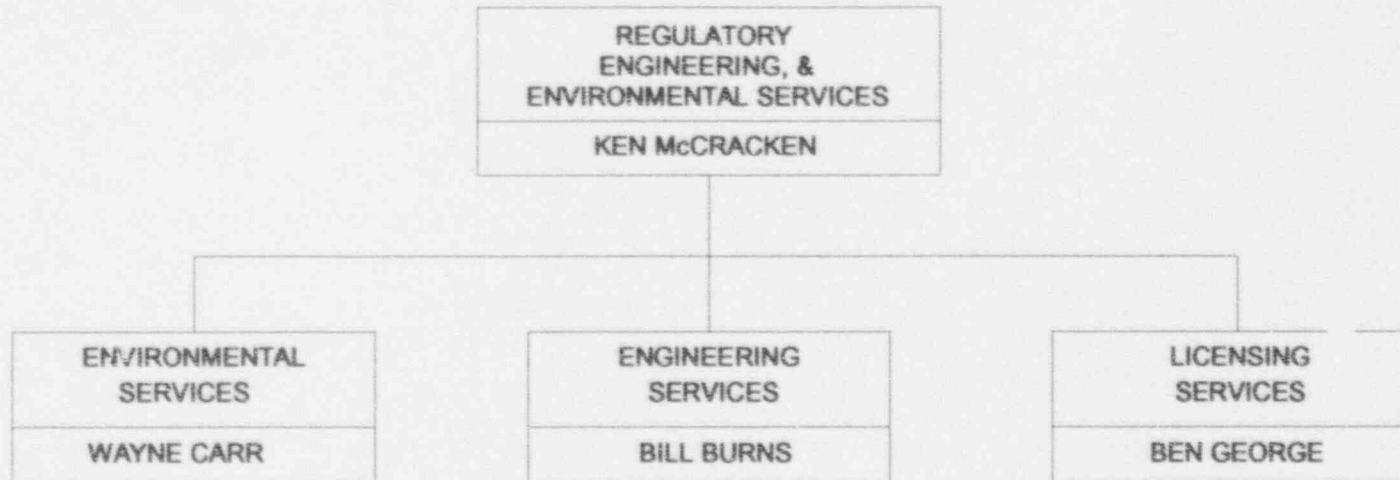
- FUEL CYCLES
- OPERATION SUPPORT
- LICENSING



- ISI/IST PROGRAMS
- OUTAGE PLANS
- CODE INTERPRETATIONS

- SUPERVISE NDE CONTRACTS
- CONDUCT NDE AND TESTING
- QUALIFICATION CERTIFICATION

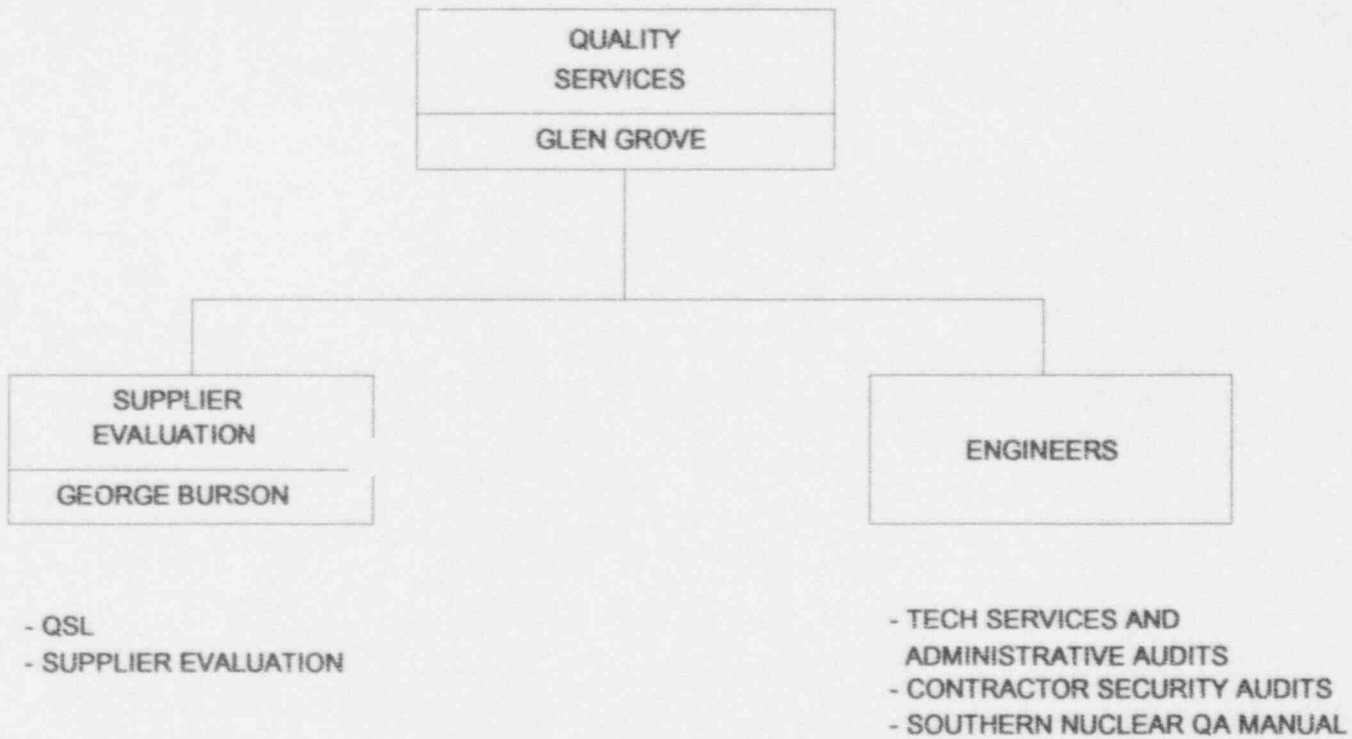
- OUTAGE PLANNING
- FINAL REPORT



- ENVIRONMENTAL PERMITS
- ENVIRONMENTAL EXPERTISE (CLEAN WATER & TOXIC WASTE)
- CHEMISTRY
- HP
- EMERGENCY PLANNING
- RADWASTE

- GENERIC ENGINEERING ISSUES
- SPECIALIZED ENGINEERING SERVICES (ALWR)
- PRA / IPE
- SEVERE ACCIDENT ISSUES
- PART 21 EVALUATIONS

- NEI
- RULEMAKING
- GENERIC LICENSING ISSUES
- FUEL LICENSING SUPPORT
- PLANT LICENSING SUPPORT
- PLANT LICENSE RENEWAL
- DECOMMISSIONING

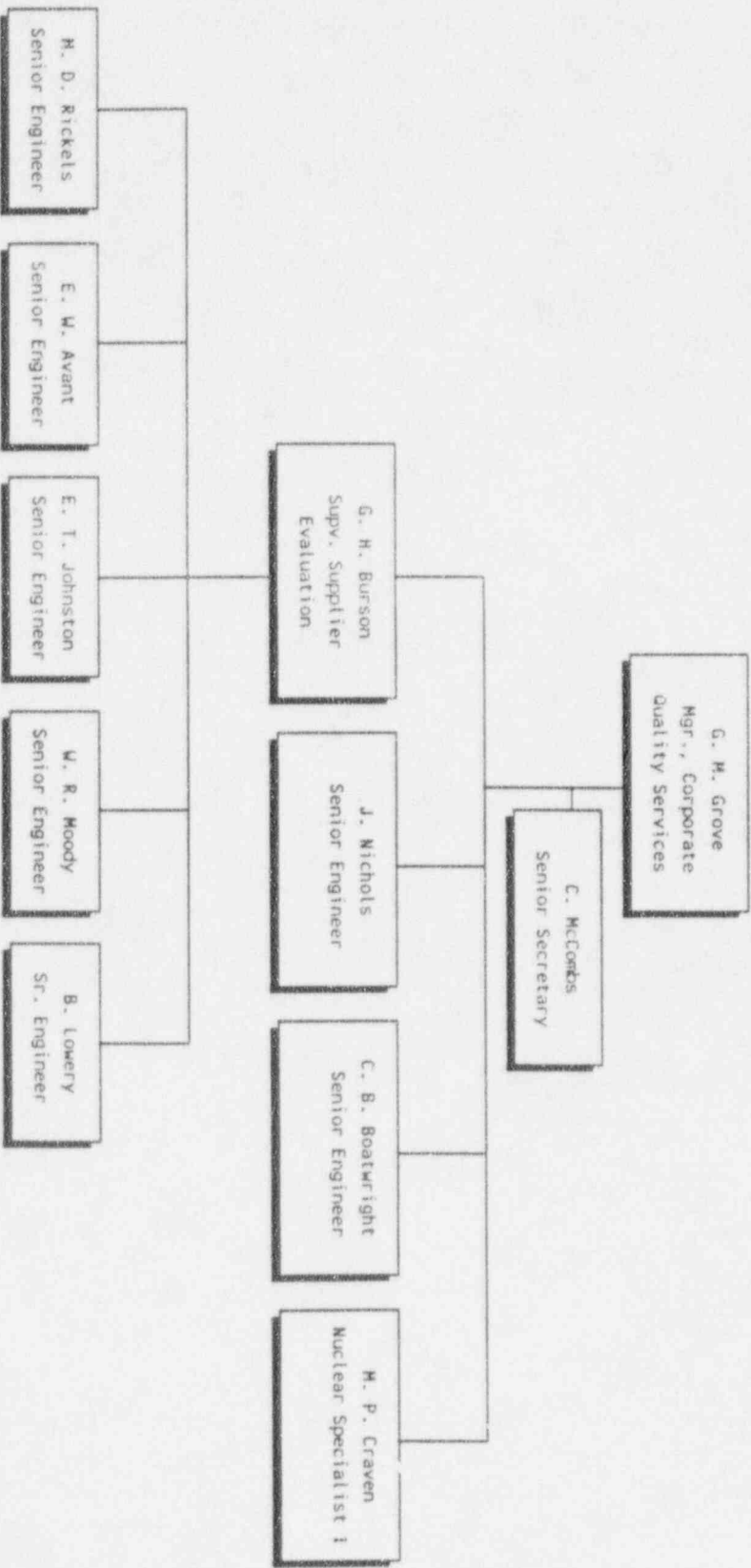


**NUCLEAR TECHNICAL
SERVICES**

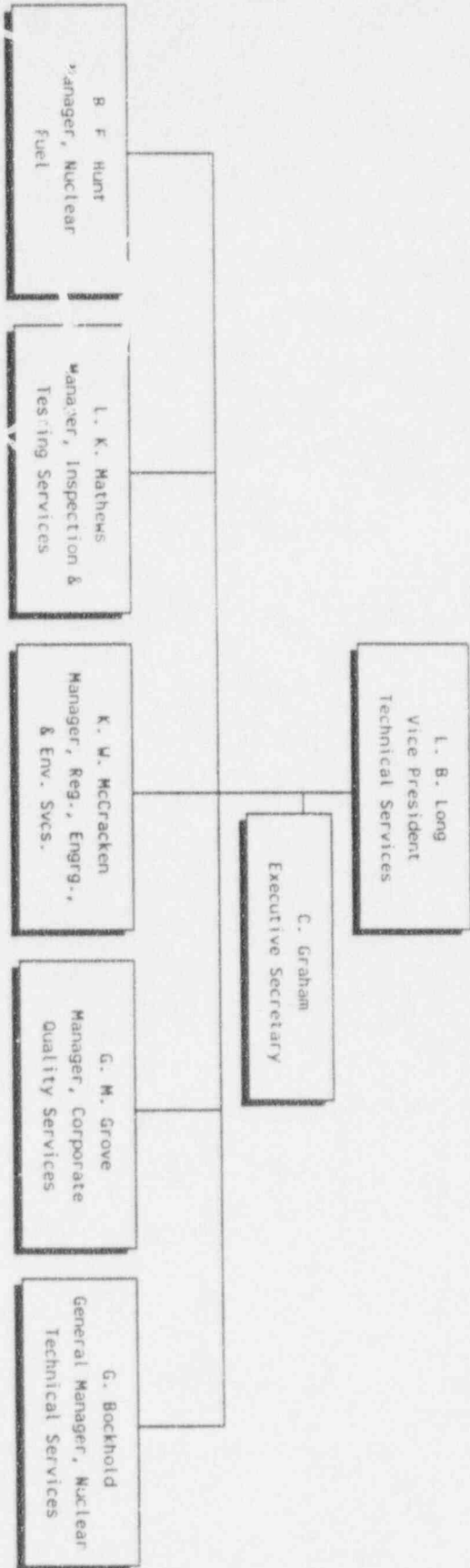
GEORGE BOCKHOLD

- ALWR PROGRAM
- REENGINEERING

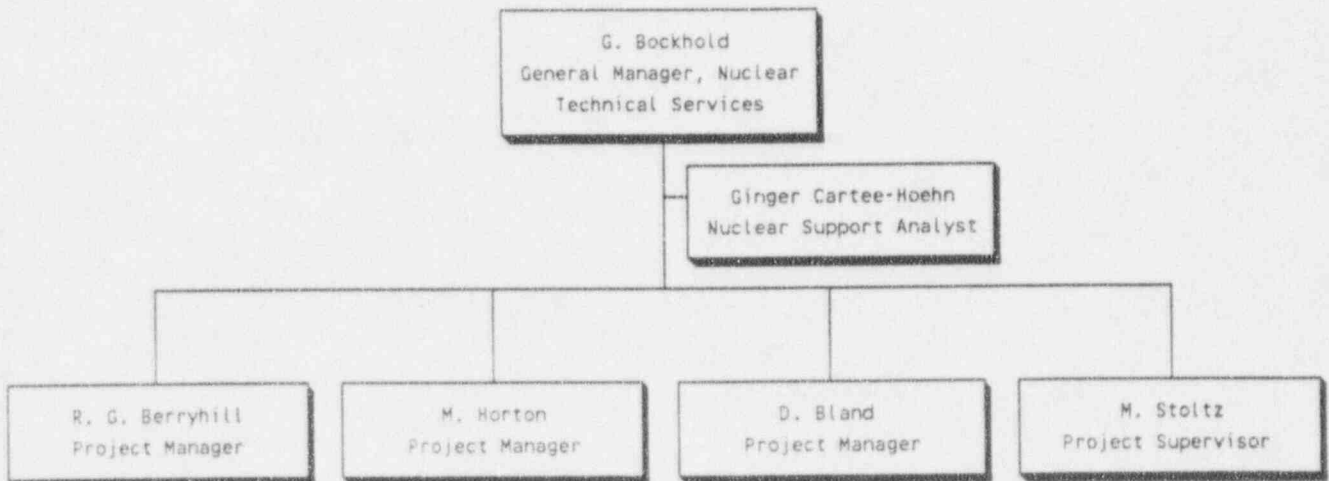
CORPORATE QUALITY SERVICES
2/15/94



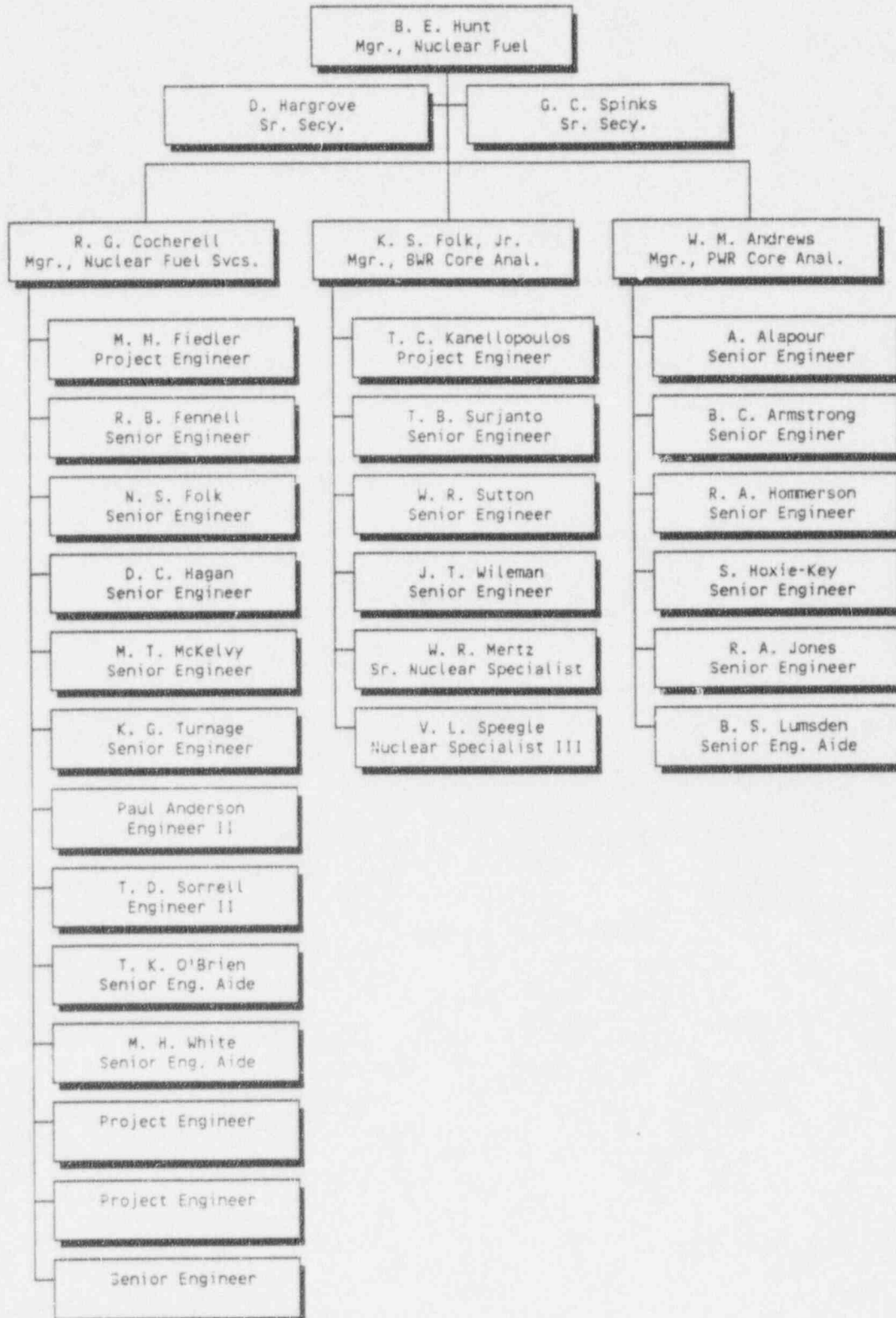
TECHNICAL SERVICES
2/15/94



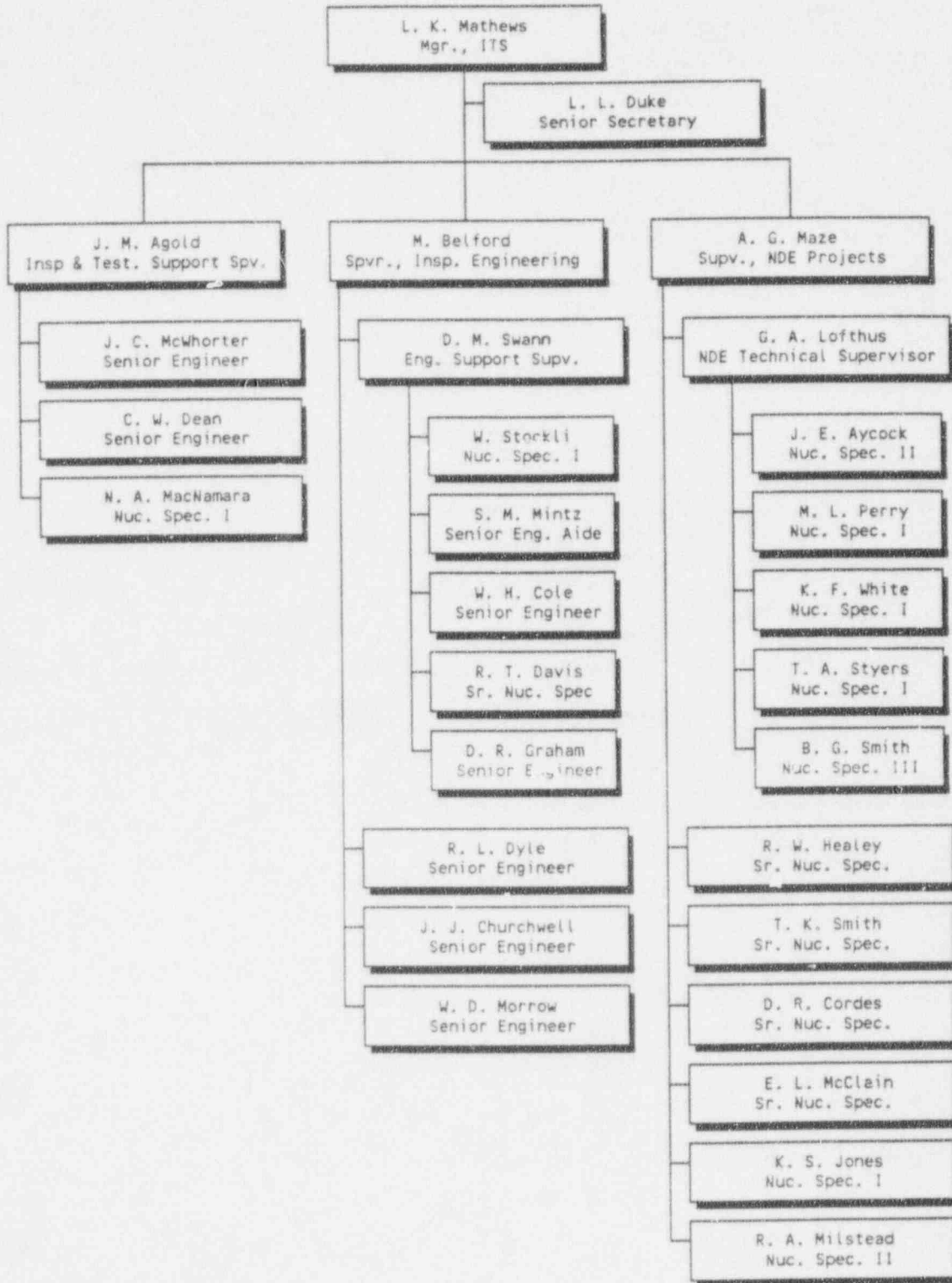
Nuclear Technical Services
2/15/94



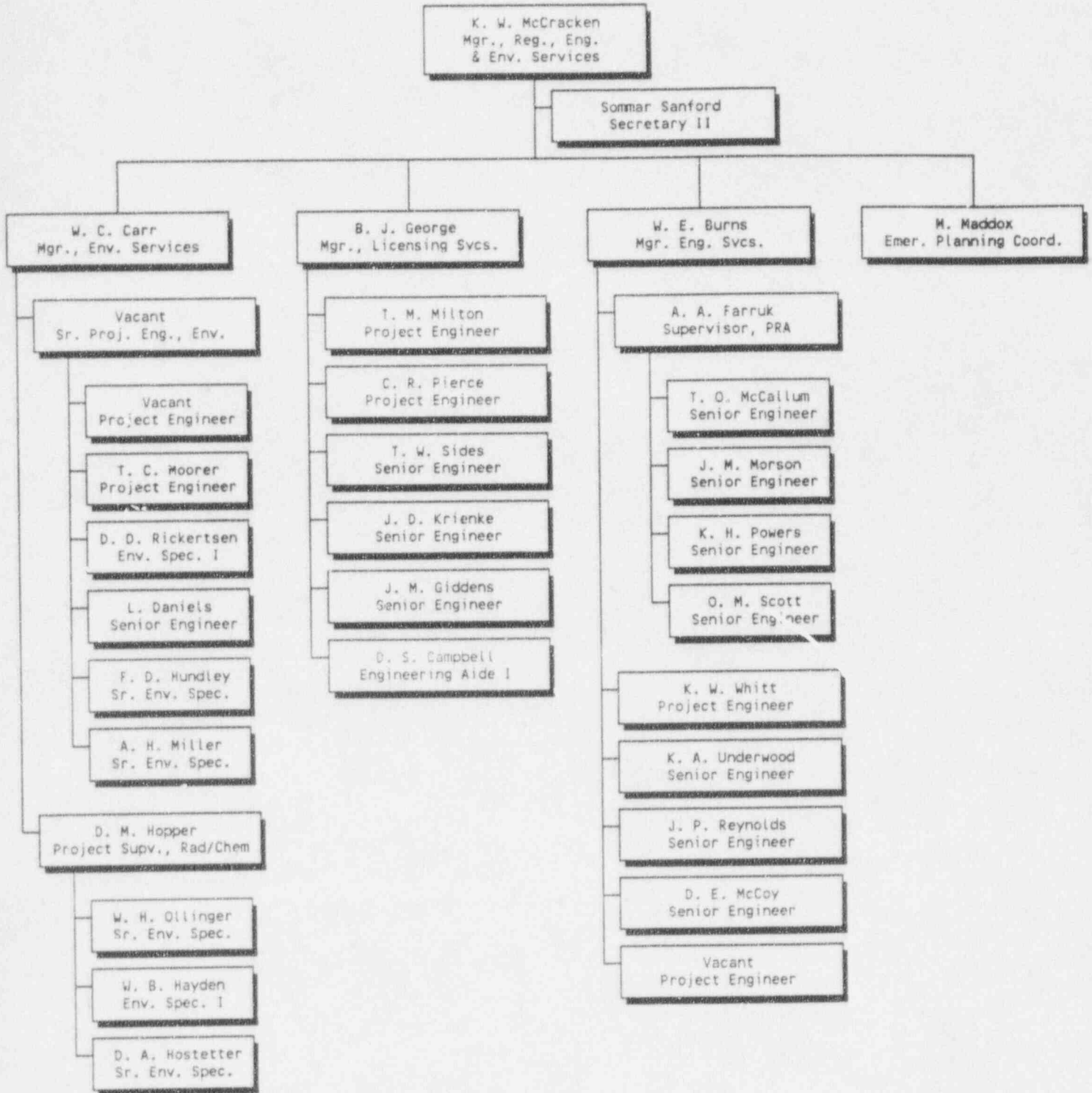
NUCLEAR FUEL
2/15/94



Inspection and Testing Services
2/15/94



REGULATORY, ENGINEERING & ENV. SERVICES
2/15/94



Our Approach to a Common Philosophy For Nuclear Operations

For nuclear operations, our approach to a common philosophy expresses some of the guiding principles of our work and supports the Southern Company's Vision Statement. It reflects the conservatism required to ensure safety from the potential of a reactor core-damaging event while optimizing the benefits of nuclear power. It is the way in which we do our planning and how we strive to perform our responsibilities.

Priority

We are dedicated to operating, maintaining, engineering, and supporting our nuclear plants in an optimum manner, hour by hour, day by day, to ensure continuous safe, reliable, and economical performance of each plant. We build on our past achievements and experiences, as well as those of other nuclear plants. We also ensure that our actions or inactions do not adversely affect our potential for even higher levels of performance in the future.

Safety

As a matter of personal, moral responsibility, we take appropriate actions to safeguard the health and safety of the public with respect to potential radiation and other environmental hazards associated with our plants, and also to safeguard the health and safety of fellow employees in our place of work.

Strategy

Because we recognize that the engineering used in the design, construction, and operation of any large, complex production facility, such as a nuclear plant, is a less-than-perfect application of physical sciences, and because we also recognize that we are not infallible in the application of knowledge and skills, imperfections will evolve into problems that we must overcome in order to accomplish our mission. Therefore, we are "problem" oriented and maintain our day-to-day, as well as long-term, focus on the detection of existing and potential problems before they become significant, and take actions to resolve them in a safe and cost-effective manner.

Individualism

We accomplish our mission through teamwork, with each individual having uniquely assigned work and having the authority, responsibility, and accountability for the performance of that work. We recognize that our success depends largely upon each individual's:

- personal integrity, character, and personality for the overall strength and potential he or she brings to our teams;
- applied knowledge and skills in his or her area of endeavor and in his or her interpersonal and team relationship;
- ability to identify problems and to contribute to their resolutions;
- ability to identify ways to simplify work and to assist in implementation;
- ability to accomplish work in accordance with applicable plans and procedures.

We dedicate our individual initiatives and unique capabilities to achieve our personal, team, and company objectives. Within this framework, each of us is independently responsible for our professionalism.

Spirit

We are mutually and collectively supportive to maintain a strong, positive team spirit for achieving our goals in a very restrictive and demanding environment.

Mindset

We consider the relative importance and priority of every aspect of our work and are guided by the axiom that *"No detail is too small that can make a difference."*

Our Commitment to Owner Satisfaction

We are committed to satisfy the needs and expectations of the owners of the plants that we serve. Our commitment to the owners is marked by quality, value, dependability, and technical excellence. We work closely with the owners, seeking to understand their needs and to meet their expectations.