



UNITED STATES
NUCLEAR REGULATORY COMMISSION
WASHINGTON, D. C. 20555-0001

June 20, 1994

Docket Nos. 50-266 and
50-301

LICENSEE: Wisconsin Electric Power Company
FACILITY: Point Beach Nuclear Plant, Units 1 and 2
SUBJECT: INSTALLATION OF TWO ADDITIONAL EMERGENCY DIESEL GENERATORS

On June 7, 1994, the staff met with representatives of the licensee at One White Flint North, Rockville, Maryland. The purpose of the meeting was to discuss the installation of two additional emergency diesel generators (EDGs) at the Point Beach Nuclear Plant, and the related Technical Specification (TS) change request. Enclosure 1 lists the meeting participants.

Following introductions and a brief summary of the purpose of the meeting, the licensee staff presented a review of the electrical design, a status summary of the construction, and a description of the TS change request (Enclosure 2 provides copies of the meeting handouts).

The following points were made at this meeting:

- (1) The licensee has only completed one margin test, whereas the Regulatory Guide they committed to for testing requires two (Regulatory Guide 1.9, Revision 3, "Selection, Design and Qualification of Diesel-Generator Units Used as Standby [Onsite] Electric Power Systems at Nuclear Power Plants"). The licensee stated that they plan to complete a second test. They will review their test plans and provide a summary to the staff.
- (2) On page 15.3.7-4 of the TS amendment submittal, proposed TS 15.3.7.B.1.f discusses the Limiting Condition for Operation (LCO) for one EDG out of service. This LCO allows the licensee 24 hours to conduct a starting test on the redundant EDG, consistent with the current TS. Further clarification is provided in the proposed bases on page 15.3.7-7. The licensee committed to clarify this statement with a caveat explaining that this 24 hour period was only acceptable after verification that there is no potential for a common mode failure.
- (3) On page 109 of the Design Summary, Note B, the licensee states that they will perform "portions or" all of the listed tests during site acceptance testing. The licensee committed to remove the words "portions or" from this note.
- (4) On page 109 of the Design Summary, the licensee deleted old Item 10, "Test Mode Changeover Test." The staff questioned why this was deleted. The licensee committed to review this decision to see if the system design can be modified to provide a test override into automatic mode if an SI signal is received during testing.

240010

9406270346 940620
PDR ADDCK 05000266
PDR

NRG FILE CENTER COPY

DF01/1

- (5) The licensee committed to submit a letter before the fall 1994 refueling outage describing the changes to their station blackout plans as a result of the new EDG installations.
- (6) The licensee stated that they have not computed any updated probabilistic risk assessment (PRA) core damage frequencies based on the EDG installations. They committed to provide to the staff, a summary of their plans for PRA calculations.
- (7) Regulatory Guide 1.41, "Preoperational Testing of Redundant On-Site Electric Power Systems to Verify Proper Load Group Assignments," requires independent safeguards trains. The staff noted that the licensee needs to verify independence. The licensee committed to review their plans regarding independence verification, and to notify the staff of their final approach.

Original signed by

Allen G. Hansen, Project Manager
Project Directorate III-3
Division of Reactor Projects III/IV

Enclosures:

- 1. List of Meeting Attendees
- 2. Meeting Handouts

cc: See next page

Distribution on next page

OFFICE	LA:PDIII-3	PM:PDIII-3	D:PDIII-3
NAME	MRushby	AHansen	JHannon
DATE	6/17/94	6/10/94	6/29/94

ORIGINAL OFFICE COPY G:\PTBEACH\EDGTS.MTS

Distribution: w/enclosure 1 & 2

Docket File
NRC & local PDRs
PDIII-3 R/F
R. Capra 013D1
M. Farber RIII

Distribution: w/enclosure 1 only

W. Russell/F. Miraglia
R. Zimmerman 012G18
J. Roe 013E4
J. Zwolinski 013H24
A. Hansen
M. Rushbrook
OGC 015B18
E. Jordan 04D18
ACRS (10) P315
G. Greenman, RIII
J. Hannon
J. Peralta
S. Saba
C. Wu
M. McBrearty
E. Connell
M. Payne
C. Berlinger
D. Thatcher

Point Beach Nuclear Plant
Wisconsin Electric Power Company

Unit Nos. 1 and 2

cc:

Mr. Robert E. Link, Vice President
Nuclear Power Department
Wisconsin Electric Power Company
231 West Michigan Street, Room P379
Milwaukee, Wisconsin 53201

Ernest L. Blake, Jr.
Shaw, Pittman, Potts & Trowbridge
2300 N Street, N.W.
Washington, DC 20037

Mr. Gregory J. Maxfield, Manager
Point Beach Nuclear Plant
Wisconsin Electric Power Company
6610 Nuclear Road
Two Rivers, Wisconsin 54241

Town Chairman
Town of Two Creeks
Route 3
Two Rivers, Wisconsin 54241

Chairman
Public Service Commission
of Wisconsin
Hills Farms State Office Building
Madison, Wisconsin 53702

Regional Administrator, Region III
U.S. Nuclear Regulatory Commission
801 Warrenville Road
Lisle, Illinois 60532-4351

Resident Inspector's Office
U.S. Nuclear Regulatory Commission
6612 Nuclear Road
Two Rivers, Wisconsin 54241

LIST OF ATTENDEES FOR
MEETING ON JUNE 7, 1994
ON
INSTALLATION OF NEW EMERGENCY DIESEL GENERATORS

<u>NAME</u>	<u>AFFILIATION</u>
Gary Krieser	WEPCo
Tom Malanowski	WEPCo
Bruce Sasman	WEPCo
Kip Wagner	WEPCo
Curt Castell	WEPCo
John Hannon	NRC
Juan Peralta	NRC
Saba Saba	NRC
Cheng-Ih Wu	NRC
Michael McBrearty	NRC
Edward Connell	NRC
Allen Hansen	NRC
Mike Payne	NRC
Carl Berlinger	NRC
Dale Thatcher	NRC

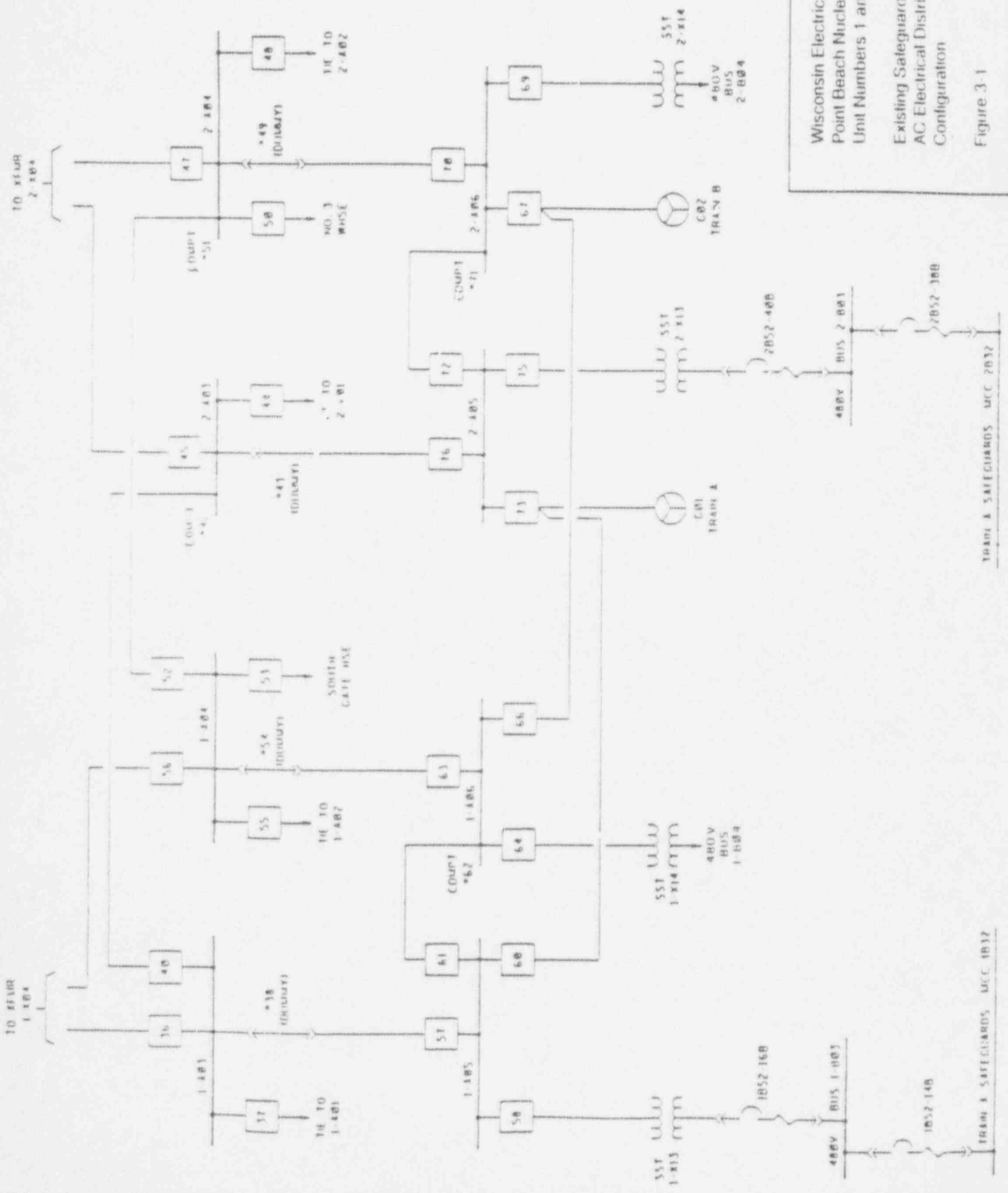
**Point Beach Nuclear Plant
Diesel Generator Addition Project Status and
Technical Specifications Change Meeting**

- ⊗ Introduction (Gary Krieser, Manager-Industry and Regulatory Services Section)

- ⊗ Review of the Electrical Design (Kip Wagner, Senior Engineer-Electrical Design)

- ⊗ Status of Construction (Bruce Sasman, Project Engineer-Civil and Structural Engineering)

- ⊗ Technical Specification Change Request #166 (Curt Castell, Senior Engineer-Licensing)

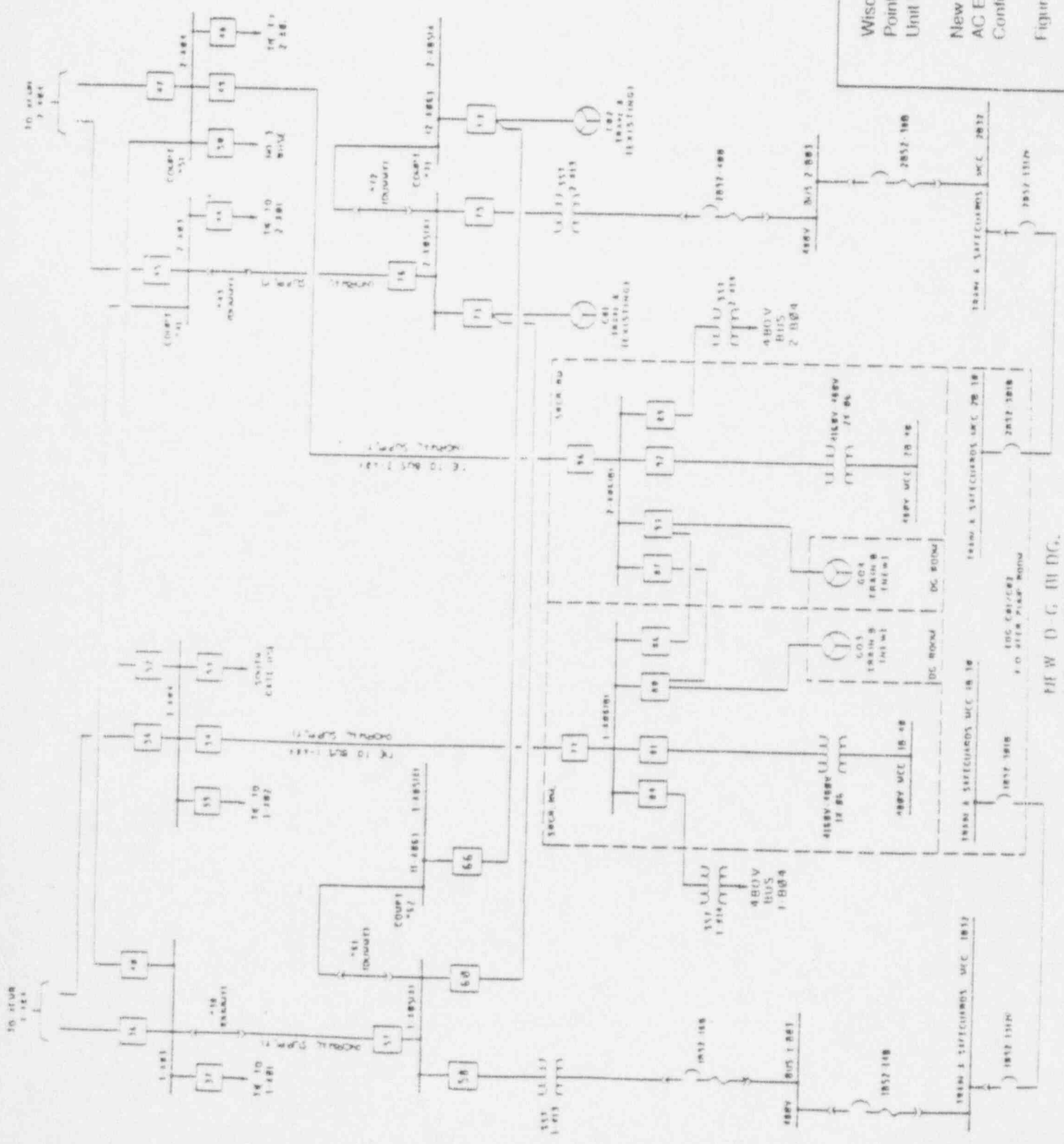


Wisconsin Electric Power Company
 Point Beach Nuclear Plant
 Unit Numbers 1 and 2
 Existing Safeguards
 AC Electrical Distribution System
 Configuration
 Figure 3-1

FROM SAFEGUARDS MCC 2032

FROM SAFEGUARDS MCC 1032

Wisconsin Electric Power Company
 Point Beach Nuclear Plant
 Unit Numbers 1 and 2
 New Safeguards
 AC Electrical Distribution System
 Configuration
 Figure 3-2



REV D-G, HDG.

DIESEL GENERATOR PROJECT

CONSTRUCTION STATUS

- ▶ ALL MAJOR EQUIPMENT IN PLACE
- ▶ MOST PIPING COMPLETE
- ▶ CABLE PULLS COMPLETE EXCEPT FOR LARGE 1000 MCM CABLE
- ▶ TERMINATIONS IN PROGRESS
- ▶ START-UP TESTING STARTING
- ▶ FIRST ENGINE RUN PLANNED 6/27/94
- ▶ SECURITY WORK TO COMMENCE SHORTLY

TSCR #166 New Emergency Diesel Generators

⊗ Contents of Change Request:

- ▶ Cover Letter
- ▶ Attachment #1: Description of current license condition
- ▶ Attachment #2: Description of proposed changes
- ▶ Attachment #3: Safety Evaluation
- ▶ Attachment #4: No Significant Hazards Consideration
- ▶ Attachment #5: Edited Technical Specification Pages
- ▶ Attachment #6: Testing Schedule
- ▶ Attachment #7: Revised Design Summary Pages

☼ Overview of Changes:

▶ TS 15.3.0 Basis

Change to use "NORMAL" and "STANDBY" emergency power.

NORMAL = A03/A04

STANDBY = Emergency Diesels

▶ TS 15.3.7 Auxiliary Electrical Systems

TS 15.3.7.A.1 Delete normal and standby emergency power requirements d., e., and f. and combine them into j., k., and l.

TS 15.3.7.A.2 Delete entire abnormal conditions startup.

TS 15.3.7.B.1 Delete normal and standby emergency power requirements d. and g. and combine them into f., g., and h.

Except provision that prevents bus-tie with standby emergency power LCO, this is incorporated into the revised bus-tie LCOs, 15.3.7.d. and e.

- ▶ TS 15.3.7 Auxiliary Electrical Systems Basis

Define and use "NORMAL" and "STANDBY" emergency power.

The starting air system is different and the fuel oil system for new EDGs doesn't have base tanks (4 hours vs 2 hours).

- ▶ TS Table 15.3.14-1 Safe Shutdown Area Fire Protection

Add new areas 15 through 20.

- ▶ TS 15.4.6 Emergency Power System Periodic Tests

Change Annual Inspection requirement to "following manufacturer's recommendations."

Change Fuel oil system sampling requirements to include the appropriate tanks.

• • ☉ Safety Evaluation:

- ▶ Introduction
- ▶ FSAR Requirements (GDCs 2 and 39)
- ▶ Differences between the New and Original EDGs and other changes by this modification (10 items listed)
- ▶ Bus-tie breaker specifications
- ▶ Loss of All AC Power (10 CFR 50.63)
- ▶ Fire Protection (10 CFR 50.48)
- ▶ Interim Configurations
- ▶ Probabilistic Safety Assessment
- ▶ Conclusion

☉ No Significant Hazards Consideration

☉ Edited Technical Specification Pages

Additional Attachments:

☉ Testing Schedule

☉ Revised Design Summary Pages