

M-32



Department of Energy

Idaho Operations Office
West Valley Project Office
P.O. Box 191
West Valley, NY 14171

June 15, 1994

Mr. Gary C. Comfort
Headquarters
U.S. Nuclear Regulatory Commission
Washington, DC 20555

SUBJECT: Transmittal of Information for the Vitrification Facility NRC Readiness Notebook

Dear Mr. Comfort:

An aspect of the West Valley Demonstration Project (WVDP) Vitrification operational readiness activities is the development of the Vitrification Facility NRC Readiness Notebook (Notebook) for the Nuclear Regulatory Commission (NRC). ~~The purpose of the Notebook is ensure the NRC~~ is provided with the necessary information to support their effort in assessing the operational readiness to commence radioactive vitrification operations at WVDP. The documentation provided as enclosures includes updated P&ID drawing list and drawings, General Arrangement drawing list and drawings, and Cold Chemical System Description. Enclosure A provides instructions for incorporating the information into the Notebook. Enclosure B provides the current schedule for the planned release of information for incorporation into the Notebook.

It is the goal of the West Valley Demonstration Project to ensure the NRC is provided with the necessary information in a timely manner to support their effort in assessing the operational readiness of radioactive vitrification operations at WVDP. If there are any questions regarding this matter, contact J. J. May at (716) 942-2161 or W. S. Ketola at (716) 942-4314.

Sincerely,

T. J. Rowland, Director
West Valley Project Office

200062

9406230023 940615
PDR PROJ
M-32 PDR

change: LA
Region

Ltr.	Encl.
1	1
1	0

NF13 1/2

- Enclosures: A) Instructions for Updating the Contents of the Vitrification Facility NRC
Readiness Notebook Volumes I and IV (3 copies)
B) Vitrification Facility NRC Readiness Notebook Transmittal Schedule (3 copies)
C) P&ID Drawing List with Drawings (3 copies)
D) General Arrangement Drawing List and Drawings (3 copies)
E) System Description Cold Chemical (3 copies)

cc: J. Furia, NRC Region I, w/ enc.
T. W. McIntosh, EM-323, TREV II, w/ enc.
F. W. Damerow, WVNS, MS 51, w/o enc.

JJM:013.94 - 0024.94.10

JJM/smn

900-D-2318 Sht:001 Rev:009 Title: Waste Mobil. Pump P&ID 8D-1-M6

900-D-2318 Sht:002 Rev:007 Title: Waste Mobil Pump P&ID 8D-1-M4

900-D-2318 Sht:003 Rev:006 Title: Waste Mobil Pump P&ID 8D-1-M3

900-D-2318 Sht:004 Rev:006 Title: Waste Mobil Pump P&ID 8D-1-M2

900-D-2318 Sht:005 Rev:006 Title: Waste Mobil Pump P&ID 8D-1-M1

900-D-2318 Sht:006 Rev:006 Title: Waste Mobil Pump P&ID 8D-2-M6

900-D-2318 Sht:007 Rev:006 Title: Waste Mobil Pump P&ID 8D-2-M5

900-D-2318 Sht:008 Rev:007 Title: Waste Mobil Pump P&ID 8D-2-M3

900-D-2318 Sht:009 Rev:006 Title: Waste Mobil Pump P&ID 8D-2-M2

900-D-2318 Sht:010 Rev:008 Title: Waste Mobil Pump P&ID 8D-2-M1

900-D-2731 Sht:001 Rev:003 Title: VF STACK SAMPLING SYSTEM P AND ID

900-D-2803 Sht:001 Rev:000 Title: Cold Chemical building H&V air flow diagram and P&ID

900-D-4072 Sht:001 Rev:000 Title: WTF INTERIM CHEM. & SLUDGE WASH WATER ADD. SYS P&ID

900-D-4525 Sht:001 Rev:003 Title: W ? INTERIM CHEM & SLUDGE WASH WATER ADDITION SYS P&ID

900-E-705 Sht:01A Rev:006 Title: CTS ABB & LEGEND PROCESS & INSTRUM DIA

900-E-705 Sht:01B Rev:001 Title: JET CONTROL

900-E-705 Sht:01C Rev:000 Title: JET CONTROL

900-E-705 Sht:01D Rev:001 Title: MFHT BUBBLER CONTROL

900-E-705	Sht:01E	Rev:001	Title: CPMT BUBBLER CONTROL
-----------	---------	---------	-----------------------------

900-E-705	Sht:01F	Rev:000	Title: INTEX VIT & 01/14
-----------	---------	---------	--------------------------

900-E-705	Sht:002	Rev:019	Title: CTS concentrator feed makup tk. 63 v001 P&ID
-----------	---------	---------	---

900-E-705	Sht:003	Rev:017	Title: CTS melter feed hold tk 63 v011 P&ID
-----------	---------	---------	---

900-E-705	Sht:004	Rev:014	Title: CTS waste header V-045 vit. cell P&ID
-----------	---------	---------	--

900-E-705	Sht:005	Rev:009	Title: CTS - ADS sample pump & P&ID
-----------	---------	---------	-------------------------------------

900-E-705	Sht:006	Rev:010	Title: CTS fht ads pump 63g011 P&ID
-----------	---------	---------	-------------------------------------

900-E-705	Sht:007	Rev:011	Title: CTS INTERNAL MELTER THERMOCOUPLES
-----------	---------	---------	--

900-E-705	Sht:008	Rev:013	Title: CTS MELTER COOLING SYSTEM
-----------	---------	---------	----------------------------------

900-E-705	Sht:009	Rev:018	Title: CTS MELTER PNEUMATIC INSTRUMENTATION
-----------	---------	---------	---

900-E-705	Sht:010	Rev:013	Title: CTS MELTER AND HEATER POWER SUPPLY AND CONTROLS
-----------	---------	---------	--

900-E-705	Sht:011	Rev:014	Title: SAMPLER FOR V001 & V011 PROCESS & INSTR. DIA.
-----------	---------	---------	--

900-E-705	Sht:012	Rev:014	Title: CTS TURNTABLE
-----------	---------	---------	----------------------

900-E-705	Sht:014	Rev:017	Title: CTS PRIMARY SCRUBBER SCRUB SECTION
-----------	---------	---------	---

900-E-705	Sht:015	Rev:014	Title: CTS PRIMARY SCRUBBER RECEIVER TANK
-----------	---------	---------	---

900-E-705	Sht:016	Rev:005	Title: CTS GLASS LEVEL DETECTOR SYSTEM
-----------	---------	---------	--

900-E-705	Sht:019	Rev:013	Title: CTS VESSEL VENT SYSTEM
-----------	---------	---------	-------------------------------

900-E-705	Sht:021	Rev:012	Title: CTS melt off gas sys preheater & hemes P&ID
-----------	---------	---------	--

900-E-705	Sht:022	Rev:017	Title: CTS vessel off gas filters & heaters P&ID
-----------	---------	---------	--

900-E-705	Sht:023	Rev:011	Title: canister decontamination Tank 63-V-044 P&ID
-----------	---------	---------	--

900-E-705	Sht:024	Rev:008	Title: CTS-MAINTENANCE & CAPPING STATION P&ID
-----------	---------	---------	---

900-E-705	Sht:025	Rev:004	Title: Ex-Cell Vent Header P&ID
-----------	---------	---------	---------------------------------

903-D-013	Sht:001	Rev:007	Title: P&ID STS UTILITY WATER SYSTEM
-----------	---------	---------	--------------------------------------

903-D-014	Sht:001	Rev:016	Title: P&ID STS UTILITY & INSTRUMENT AIR
-----------	---------	---------	--

903-D-014	Sht:002	Rev:011	Title: STS P&ID (V&S Bldg) UTILITY & INST. AIR
-----------	---------	---------	--

903-D-016	Sht:001	Rev:017	Title: STS P&ID FILTRATION & COOLING SECTION
-----------	---------	---------	--

903-D-017	Sht:001	Rev:011	Title: STS P&ID ION EXCHANGE SECTION SHEET 1
-----------	---------	---------	--

903-D-018	Sht:001	Rev:011	Title: STS P&ID ION EXCHANGE SECTION SHEET 2
-----------	---------	---------	--

903-D-019	Sht:001	Rev:013	Title: STS P&ID FINAL FILTRATION & STORAGE
-----------	---------	---------	--

903-D-020	Sht:001	Rev:011	Title: STS P&ID ZEOLITE FILL & SLOICE SECTION
-----------	---------	---------	---

903-D-021	Sht:001	Rev:009	Title: STS P&ID VENTING/CHILLER SECTION
-----------	---------	---------	---

904-D-011	Sht:001	Rev:009	Title: P&ID sludge mobilization sys. 8Q-4Pit
-----------	---------	---------	--

904-D-012	Sht:001	Rev:009	Title: P&ID Sludge mobilization system 8Q-1 pit
-----------	---------	---------	---

904-D-013	Sht:001	Rev:011	Title: P&ID Sludge Mobilization system 8Q-2 pit
-----------	---------	---------	---

904-D-014	Sht:001	Rev:009	Title: P&ID sludge mobilization system 8Q-5 pit
-----------	---------	---------	---

904-D-015	Sht:001	Rev:011	Title: P&ID sludge mobilization sys utility water/chemical system and seal water systems
-----------	---------	---------	--

904-D-016	Sht:001	Rev:005	Title: P&ID sludge mobilization system utility air system
-----------	---------	---------	---

905-D-010	Sht:001	Rev:001	Title: VF SHIELDING GAS & ARGON GAS SYSTEM P&ID
-----------	---------	---------	---

905-D-011	Sht:001	Rev:011	Title: P&ID Vitrification Drainage system high level
-----------	---------	---------	--

905-D-015	Sht:001	Rev:017	Title: P&ID COLD CHEMICAL PREPARATION & FEED SYSTEM
-----------	---------	---------	---

905-D-016	Sht:001	Rev:018	Title: P&ID COLD CHEMICAL PREPARATION & FEED SYSTEM
-----------	---------	---------	---

905-D-017	Sht:001	Rev:017	Title: P&ID COLD CHEMICAL PREPARATION & FEED SYSTEM
-----------	---------	---------	---

905-D-018	Sht:001	Rev:010	Title: P&ID COLD CHEMICAL PREPARATION & FEED SYSTEM
-----------	---------	---------	---

905-D-019	Sht:001	Rev:008	Title: P&ID COLD CHEMICAL STEAM & CONDENSATE SYSTEM
-----------	---------	---------	---

905-D-020	Sht:001	Rev:011	Title: P&ID COLD CHEMICAL UTILITY & INSTRUMENT AIR
-----------	---------	---------	--

905-D-021	Sht:001	Rev:010	Title: P&ID COLD CHEMICAL WATER SYSTEMS
-----------	---------	---------	---

905-D-022	Sht:001	Rev:006	Title: P&ID COLD CHEMICAL ACID & CAUSTIC SYSTEMS
-----------	---------	---------	--

905-D-023	Sht:001	Rev:014	Title: P&ID diesel fuel oil transfer system
-----------	---------	---------	---

905-D-024	Sht:001	Rev:005	Title: P&ID COLD CHEMICAL FIRE PROTECTION
-----------	---------	---------	---

905-D-025	Sht:001	Rev:004	Title: P&ID secondary filter, diesel gen & crane maintenance room
-----------	---------	---------	---

905-D-026	Sht:001	Rev:003	Title: P&ID Vitrification facility utility water system
-----------	---------	---------	---

905-D-027	Sht:001	Rev:004	Title: P&ID vitrification facility non rack cold chemical decon system
-----------	---------	---------	--

905-D-028	Sht:001	Rev:004	Title: P&ID vitrification facility steam system
-----------	---------	---------	---

905-D-029	Sht:001	Rev:014	Title: P&ID vitrification facility instrument & utility air sys
-----------	---------	---------	---

905-D-044	Sht:001	Rev:002	Title: VF SFR & CMR HIGH PRESSURE AIR SYSTEM P&ID
-----------	---------	---------	---

905-D-045	Sht:001	Rev:004	Title: P&ID Vitrification facility instrument rack 3W2-1A
-----------	---------	---------	---

905-D-045	Sht:002	Rev:005	Title: P&ID Vitrification facility instrument rack 3E8-7A
-----------	---------	---------	---

905-D-045	Sht:003	Rev:006	Title: P&ID Vitrification facility instrument rack 2N7-6
-----------	---------	---------	--

905-D-045	Sht:004	Rev:007	Title: P&ID Vitrification facility instrument rack 2N6-5
-----------	---------	---------	--

905-D-045	Sht:005	Rev:005	Title: P&ID Vitrification facility
-----------	---------	---------	------------------------------------

905-D-045	Sht:006	Rev:004	Title: P&ID Vitrification facility instrument rack 2E9-8
-----------	---------	---------	--

905-D-045	Sht:007	Rev:004	Title: P&ID Vitrification Facility instrument rack 2W3-2
-----------	---------	---------	--

905-D-045	Sht:008	Rev:003	Title: P&ID Vitrification facility instrument rack 3E9-7B
-----------	---------	---------	---

905-D-045	Sht:009	Rev:005	Title: P&ID Vitrification facility instrument rack 3W7
-----------	---------	---------	--

905-D-045	Sht:010	Rev:006	Title: P&ID Vitrification facility instrument rack 2N8
-----------	---------	---------	--

905-D-045	Sht:011	Rev:007	Title: P&ID Vitrification facility instrument rack 3W4
-----------	---------	---------	--

905-D-045	Sht:012	Rev:006	Title: P&ID Vitrification facility instrument rack 3W5 sheet 1
-----------	---------	---------	--

905-D-045	Sht:013	Rev:006	Title: P&ID Vitrification facility instrument rack 3W6
-----------	---------	---------	--

905-D-045	Sht:014	Rev:004	Title: P&ID Vitrification facility instrument rack 3W3
-----------	---------	---------	--

905-D-045	Sht:015	Rev:002	Title: P&ID Vitrification facility instrument rack 3W1
-----------	---------	---------	--

905-D-045	Sht:016	Rev:005	Title: P&ID Vitrification facility instrument rack 2W4
-----------	---------	---------	--

905-D-045	Sht:017	Rev:005	Title: P&ID Vitrification facility instrument rack 2W5
-----------	---------	---------	--

905-D-045	Sht:018	Rev:005	Title: P&ID Vitrification facility instrument rack 3E10
-----------	---------	---------	---

905-D-045	Sht:019	Rev:002	Title: P&ID Vitrification facility instrument rack 2E10
-----------	---------	---------	---

905-D-045	Sht:020	Rev:004	Title: P&ID Vitrification facility instrument rack 3W5 Sheet 2
-----------	---------	---------	--

905-D-046	Sht:001	Rev:024	Title: P&ID vitrification facility utility air system
-----------	---------	---------	---

905-D-046	Sht:002	Rev:011	Title: P&ID vitrification facility instrument air system
-----------	---------	---------	--

905-D-046	Sht:003	Rev:013	Title: P&ID vitrification facility instrument air system
-----------	---------	---------	--

905-D-046	Sht:004	Rev:001	Title: VF P&ID UTILITY AIR SYSTEM
-----------	---------	---------	-----------------------------------

905-D-047	Sht:001	Rev:013	Title: P&ID vitrification facility steam system
-----------	---------	---------	---

905-D-047	Sht:002	Rev:016	Title: P&ID vitrification facility condensate system
-----------	---------	---------	--

905-D-047	Sht:003	Rev:013	Title: P&ID vitrification facility steam system
-----------	---------	---------	---

905-D-048	Sht:001	Rev:010	Title: P&ID vitrification facility utility water system
-----------	---------	---------	---

905-D-048	Sht:002	Rev:013	Title: P&ID vitrification facility demineralized water system
-----------	---------	---------	---

905-D-049	Sht:001	Rev:003	Title: P&ID vitrification facility fire protection systems
-----------	---------	---------	--

905-D-050	Sht:001	Rev:007	Title: P&ID vitrification drainage system low level
-----------	---------	---------	---

905-D-051	Sht:001	Rev:010	Title: P&ID vitrification facility potable water system
-----------	---------	---------	---

905-D-052	Sht:001	Rev:010	Title: Vitrification facility closed loop cooling water system P&ID
-----------	---------	---------	---

905-D-052	Sht:002	Rev:015	Title: Vitrification facility closed loop cooling water system P&ID
-----------	---------	---------	---

905-D-053	Sht:001	Rev:005	Title: P&ID vitrification facility non rack cold chem. decon & slurry system
-----------	---------	---------	--

905-D-053	Sht:002	Rev:010	Title: P&ID vitrification facility non rack cold chem decon & slurry system
-----------	---------	---------	---

905-D-054	Sht:001	Rev:013	Title: P&ID vitrification facility cooling tower water system
-----------	---------	---------	---

905-D-055	Sht:001	Rev:001	Title: VOID PER ECN P&ID vitrification facility off gas condensate system
-----------	---------	---------	---

905-D-056	Sht:001	Rev:006	Title: P&ID vitrification facility vent header system
-----------	---------	---------	---

905-D-057	Sht:001	Rev:004	Title: Vitrification Rest Rooms P&ID
-----------	---------	---------	--------------------------------------

905-D-058	Sht:001	Rev:004	Title: PNEUMATIC SAMPLE TRANSFER SYSTEM P&ID
-----------	---------	---------	--

905-D-058	Sht:002	Rev:000	Title: PNEUMATIC SAMPLE TRANSFER SYSTEM P&ID
-----------	---------	---------	--

905-D-450	Sht:001	Rev:006	Title: HVAC air flow diagram vitrification facility
-----------	---------	---------	---

905-D-451	Sht:001	Rev:006	Title: HVAC air flow diagram & P&ID control room
-----------	---------	---------	--

905-D-452	Sht:001	Rev:014	Title: HVAC P&ID vitrification facility
-----------	---------	---------	---

905-D-452	Sht:002	Rev:009	Title: HVAC P&ID vitrification facility
-----------	---------	---------	---

905-D-452	Sht:003	Rev:004	Title: VS HVAC P&ID VITRIFICATION FACILITY
-----------	---------	---------	--

905-D-453	Sht:001	Rev:008	Title: Vitrification facility HVAC chilled water system P&ID sh 1
-----------	---------	---------	---

905-D-453	Sht:002	Rev:001	Title: Vitrification facility HVAC chilled water system P&ID sh 3
-----------	---------	---------	---

905-D-454	Sht:001	Rev:008	Title: Vitrification facility HVAC chilled water P&ID sh 2
-----------	---------	---------	--

905-E-045	Sht:021	Rev:003	Title: P&ID VITRIFICATION FACILITY INSTRUMENT RACK 3W6
-----------	---------	---------	--

906-D-009	Sht:001	Rev:002	Title: VF EX-CELL OFF-GAS MISCELLANEOUS UTILITIES P&ID
-----------	---------	---------	--

906-D-014	Sht:001	Rev:006	Title: VF MELTER OFF-GAS P&ID MELTER EX CELL OFF GAS SYSTEM
-----------	---------	---------	---

906-D-015	Sht:001	Rev:006	Title: VF MELTER OFF-GAS P&ID MELTER EX CELL OFF GAS SYSTEM
-----------	---------	---------	---

906-D-018	Sht:001	Rev:006	Title: VF MELTER OFF-GAS HVAC AIR FLOW DIAGRAM & P&ID
-----------	---------	---------	---

906-D-019	Sht:001	Rev:001	Title: VOID PER ECN VF MELTER OFF-GAS HVAC AIR FLOW DIAGRAM & P&ID
-----------	---------	---------	--

906-D-025	Sht:001	Rev:007	Title: VF MELTER OFF-GAS P&ID INSTRUMENT RACK 01
-----------	---------	---------	--

906-D-026	Sht:001	Rev:007	Title: VF MELTER OFF-GAS P&ID INSTRUMENT RACK 02
-----------	---------	---------	--

906-D-027	Sht:001	Rev:007	Title: VF MELTER OFF-GAS P&ID INSTRUMENT RACK 02
-----------	---------	---------	--

906-D-028	Sht:001	Rev:006	Title: VF MELTER OFF-GAS P&ID INSTRUMENT RACK 02
-----------	---------	---------	--

906-E-011	Sht:001	Rev:008	Title: VF MELTER OFF-GAS P&ID MELTER EX CELL OFF GAS SYSTEM
-----------	---------	---------	---

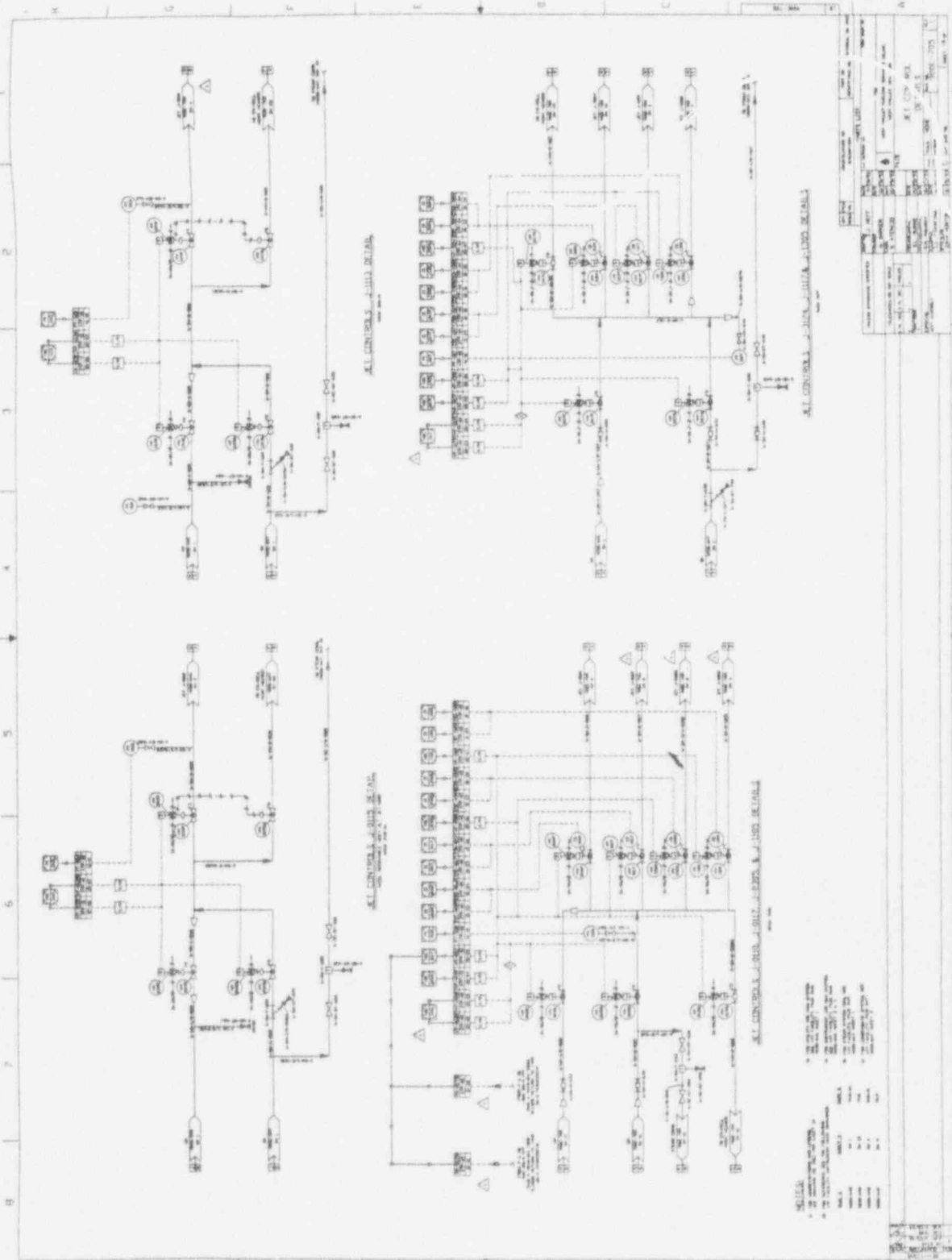
906-E-012	Sht:001	Rev:008	Title: VF MELTER OFF-GAS P&ID MELTER EX CELL OFF GAS SYSTEM
-----------	---------	---------	---

906-E-012	Sht:002	Rev:002	Title: VF P&ID MELTER EX-CELL OFF-GAS SYS
-----------	---------	---------	---

906-E-013	Sht:001	Rev:009	Title: VF MELTER OFF-GAS P&ID MELTER EX CELL OFF GAS SYSTEM
-----------	---------	---------	---

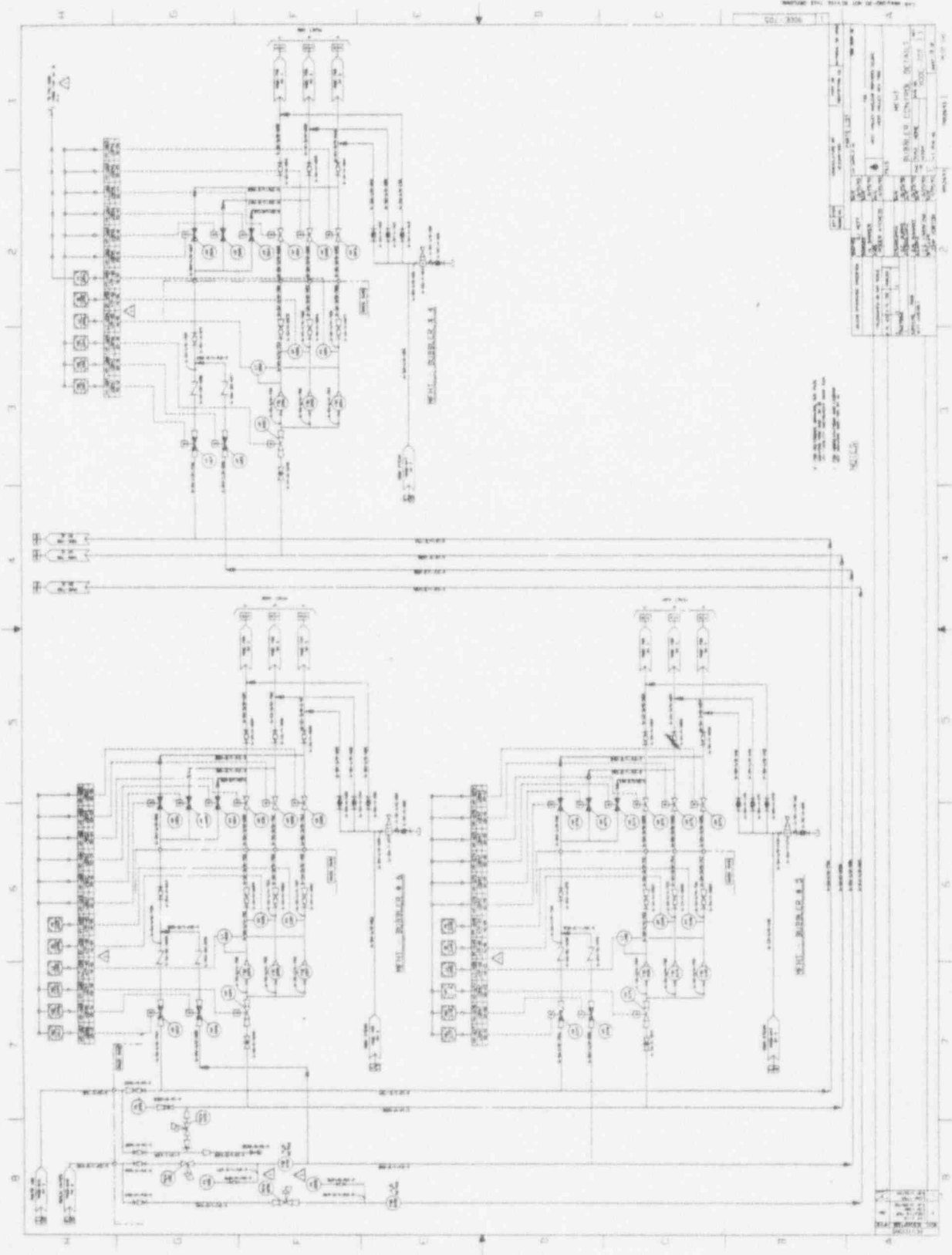
906-E-016	Sht:001	Rev:007	Title: VF MELTER OFF-GAS P&ID INSTRUMENT AIR
-----------	---------	---------	--

906-E-017	Sht:001	Rev:002	Title: VF P&ID OFF-GAS TRENCH
-----------	---------	---------	-------------------------------



1 2 3 4 5 6 7 8 9 10

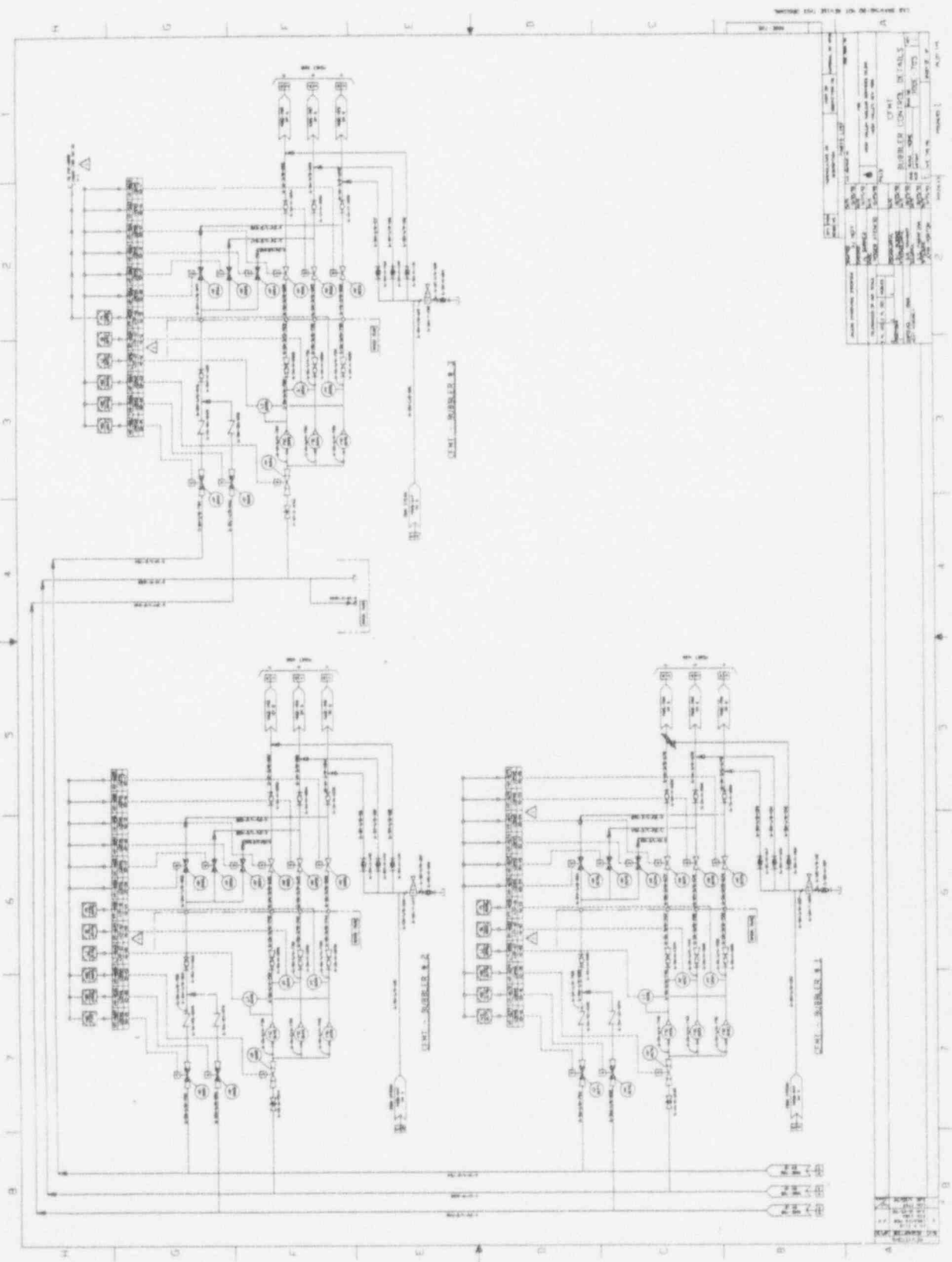
A B C D E F G H I J



NOTES:
 1. ALL WIRING TO BE DONE IN ACCORDANCE WITH THE RULES OF THE INSTITUTION OF ELECTRICAL ENGINEERS.
 2. ALL WIRING TO BE DONE IN ACCORDANCE WITH THE RULES OF THE INSTITUTION OF ELECTRICAL ENGINEERS.

REVISIONS	
NO.	DESCRIPTION
1	ISSUED FOR APPROVAL
2	ISSUED FOR APPROVAL
3	ISSUED FOR APPROVAL
4	ISSUED FOR APPROVAL
5	ISSUED FOR APPROVAL
6	ISSUED FOR APPROVAL
7	ISSUED FOR APPROVAL
8	ISSUED FOR APPROVAL
9	ISSUED FOR APPROVAL
10	ISSUED FOR APPROVAL

DATE: 10/10/1910
 DRAWN BY: [Name]
 CHECKED BY: [Name]



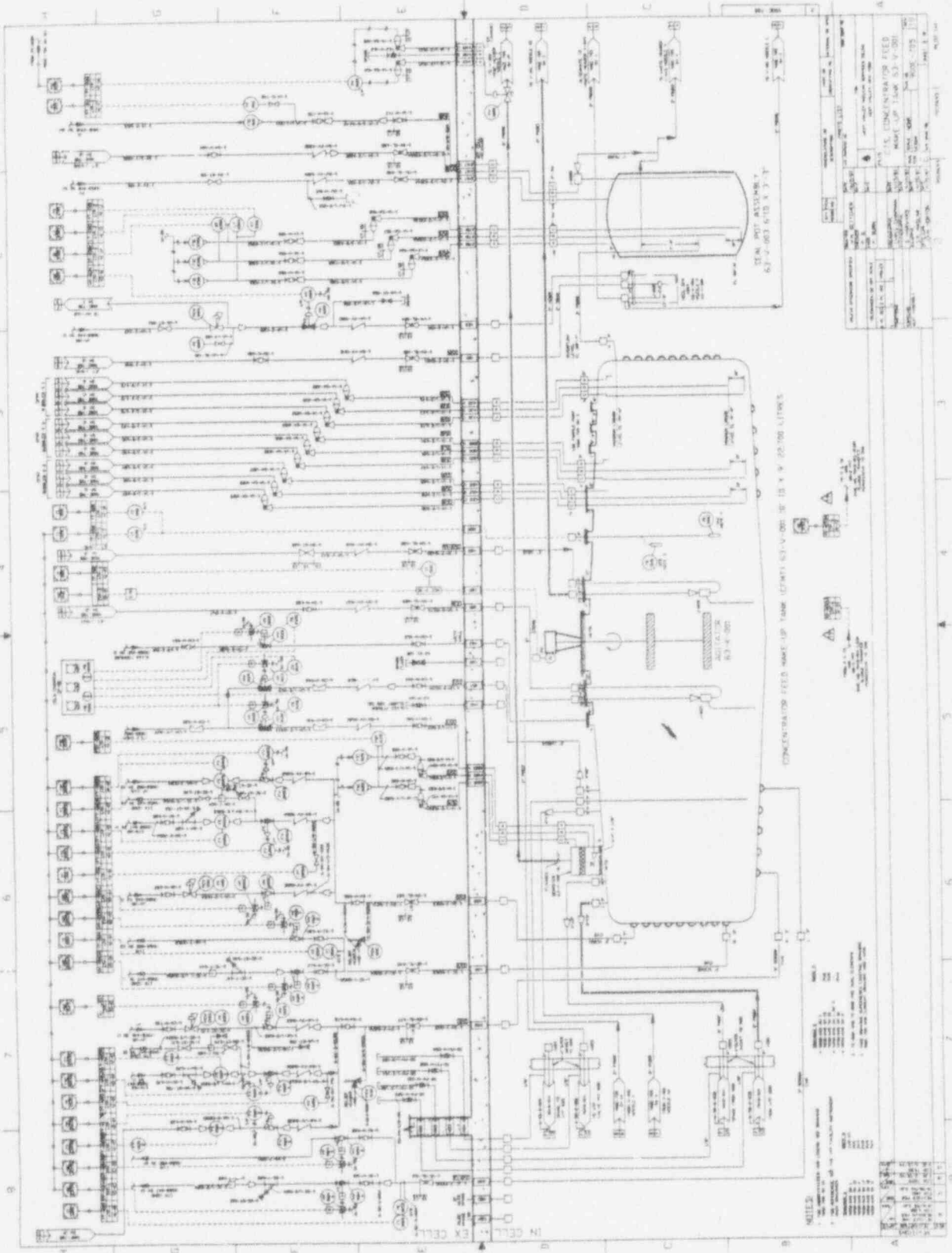
UNIT - SIGNALER S. 1

NO.	DESCRIPTION	QTY.
1	RELAY	1
2	RELAY	1
3	RELAY	1
4	RELAY	1
5	RELAY	1
6	RELAY	1
7	RELAY	1
8	RELAY	1
9	RELAY	1
10	RELAY	1
11	RELAY	1
12	RELAY	1
13	RELAY	1
14	RELAY	1
15	RELAY	1
16	RELAY	1
17	RELAY	1
18	RELAY	1
19	RELAY	1
20	RELAY	1
21	RELAY	1
22	RELAY	1
23	RELAY	1
24	RELAY	1
25	RELAY	1
26	RELAY	1
27	RELAY	1
28	RELAY	1
29	RELAY	1
30	RELAY	1
31	RELAY	1
32	RELAY	1
33	RELAY	1
34	RELAY	1
35	RELAY	1
36	RELAY	1
37	RELAY	1
38	RELAY	1
39	RELAY	1
40	RELAY	1
41	RELAY	1
42	RELAY	1
43	RELAY	1
44	RELAY	1
45	RELAY	1
46	RELAY	1
47	RELAY	1
48	RELAY	1
49	RELAY	1
50	RELAY	1
51	RELAY	1
52	RELAY	1
53	RELAY	1
54	RELAY	1
55	RELAY	1
56	RELAY	1
57	RELAY	1
58	RELAY	1
59	RELAY	1
60	RELAY	1
61	RELAY	1
62	RELAY	1
63	RELAY	1
64	RELAY	1
65	RELAY	1
66	RELAY	1
67	RELAY	1
68	RELAY	1
69	RELAY	1
70	RELAY	1
71	RELAY	1
72	RELAY	1
73	RELAY	1
74	RELAY	1
75	RELAY	1
76	RELAY	1
77	RELAY	1
78	RELAY	1
79	RELAY	1
80	RELAY	1
81	RELAY	1
82	RELAY	1
83	RELAY	1
84	RELAY	1
85	RELAY	1
86	RELAY	1
87	RELAY	1
88	RELAY	1
89	RELAY	1
90	RELAY	1
91	RELAY	1
92	RELAY	1
93	RELAY	1
94	RELAY	1
95	RELAY	1
96	RELAY	1
97	RELAY	1
98	RELAY	1
99	RELAY	1
100	RELAY	1

UNIT - SIGNALER S. 2

NO.	DESCRIPTION	QTY.
1	RELAY	1
2	RELAY	1
3	RELAY	1
4	RELAY	1
5	RELAY	1
6	RELAY	1
7	RELAY	1
8	RELAY	1
9	RELAY	1
10	RELAY	1
11	RELAY	1
12	RELAY	1
13	RELAY	1
14	RELAY	1
15	RELAY	1
16	RELAY	1
17	RELAY	1
18	RELAY	1
19	RELAY	1
20	RELAY	1
21	RELAY	1
22	RELAY	1
23	RELAY	1
24	RELAY	1
25	RELAY	1
26	RELAY	1
27	RELAY	1
28	RELAY	1
29	RELAY	1
30	RELAY	1
31	RELAY	1
32	RELAY	1
33	RELAY	1
34	RELAY	1
35	RELAY	1
36	RELAY	1
37	RELAY	1
38	RELAY	1
39	RELAY	1
40	RELAY	1
41	RELAY	1
42	RELAY	1
43	RELAY	1
44	RELAY	1
45	RELAY	1
46	RELAY	1
47	RELAY	1
48	RELAY	1
49	RELAY	1
50	RELAY	1
51	RELAY	1
52	RELAY	1
53	RELAY	1
54	RELAY	1
55	RELAY	1
56	RELAY	1
57	RELAY	1
58	RELAY	1
59	RELAY	1
60	RELAY	1
61	RELAY	1
62	RELAY	1
63	RELAY	1
64	RELAY	1
65	RELAY	1
66	RELAY	1
67	RELAY	1
68	RELAY	1
69	RELAY	1
70	RELAY	1
71	RELAY	1
72	RELAY	1
73	RELAY	1
74	RELAY	1
75	RELAY	1
76	RELAY	1
77	RELAY	1
78	RELAY	1
79	RELAY	1
80	RELAY	1
81	RELAY	1
82	RELAY	1
83	RELAY	1
84	RELAY	1
85	RELAY	1
86	RELAY	1
87	RELAY	1
88	RELAY	1
89	RELAY	1
90	RELAY	1
91	RELAY	1
92	RELAY	1
93	RELAY	1
94	RELAY	1
95	RELAY	1
96	RELAY	1
97	RELAY	1
98	RELAY	1
99	RELAY	1
100	RELAY	1

UNIT - SIGNALER S. 3

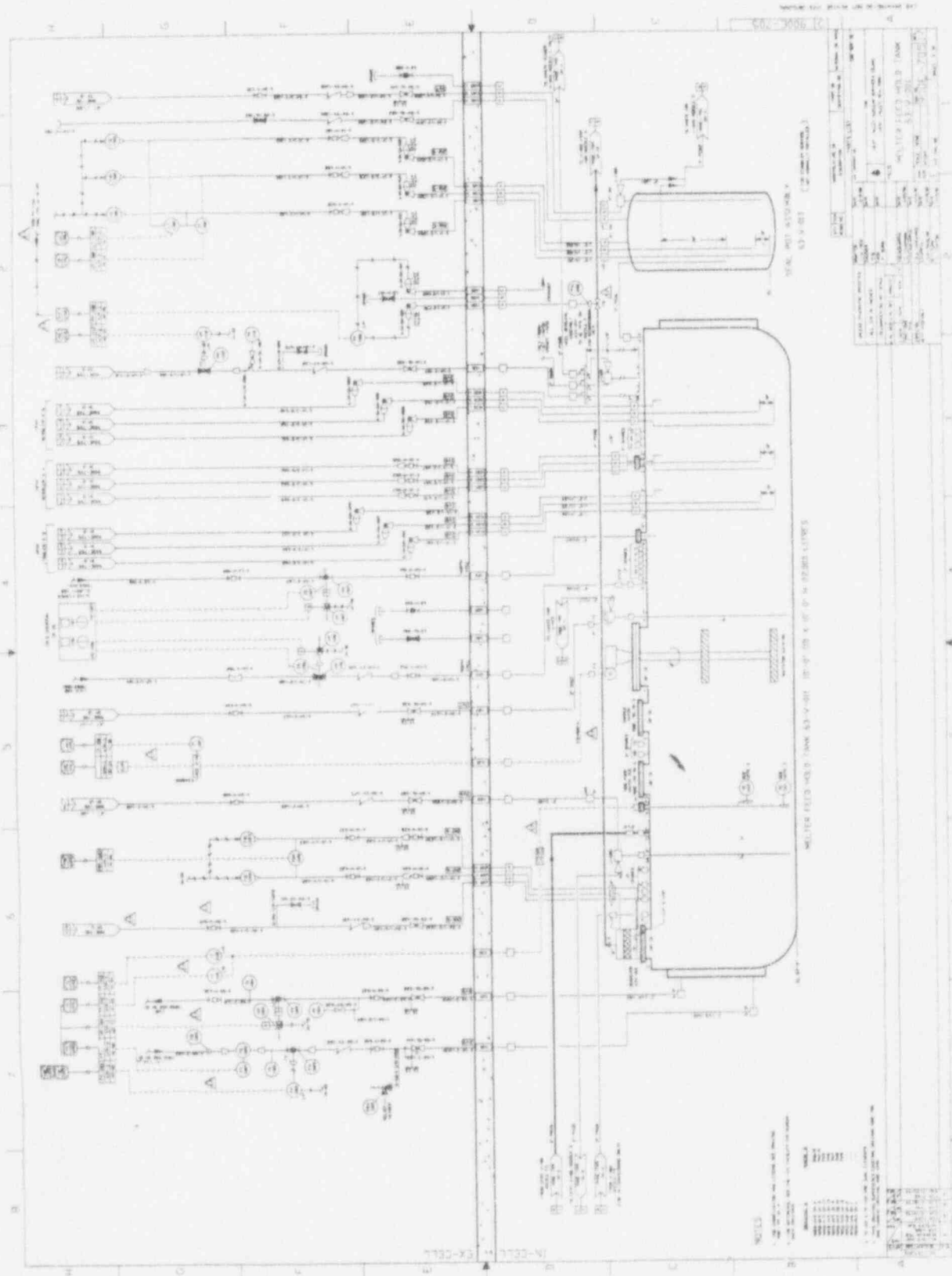


DATE	10/15/50
BY	J. H. ...
CHECKED BY	...
APPROVED BY	...
PROJECT	...
DESCRIPTION	...
REVISIONS	...

CONCENTRATOR FEED MAKE-UP TANK CAPACITY 65.000 LITRES

NO.	DESCRIPTION	QTY.
1
2
3
4
5
6
7
8

DATE	10/15/50
BY	J. H. ...
CHECKED BY	...
APPROVED BY	...
PROJECT	...
DESCRIPTION	...
REVISIONS	...



REACTOR CELL

DATE: 10/15/54

DESIGNED BY: [Name]

CHECKED BY: [Name]

APPROVED BY: [Name]

SCALE: AS SHOWN

NOTES:

1. ALL DIMENSIONS ARE IN INCHES UNLESS OTHERWISE SPECIFIED.
2. MATERIALS TO BE USED AS SHOWN IN THE DRAWING.
3. SURFACE FINISH TO BE AS SHOWN IN THE DRAWING.
4. ALL SURFACES TO BE POLISHED UNLESS OTHERWISE SPECIFIED.
5. ALL DIMENSIONS ARE TO CENTER UNLESS OTHERWISE SPECIFIED.
6. ALL DIMENSIONS ARE TO FACE UNLESS OTHERWISE SPECIFIED.
7. ALL DIMENSIONS ARE TO CENTER UNLESS OTHERWISE SPECIFIED.
8. ALL DIMENSIONS ARE TO FACE UNLESS OTHERWISE SPECIFIED.

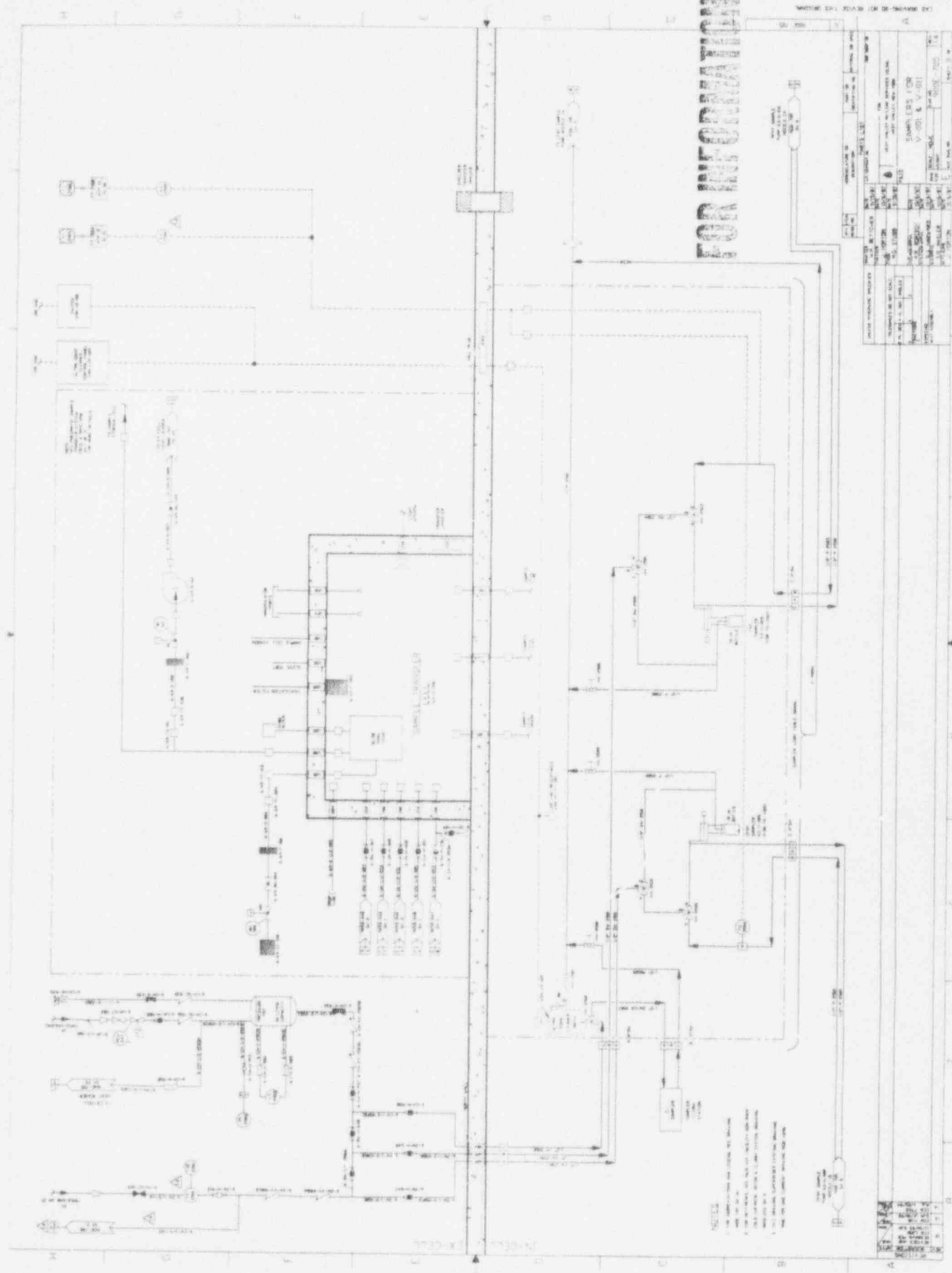
NOTES:

1. ALL DIMENSIONS ARE IN INCHES UNLESS OTHERWISE SPECIFIED.
2. MATERIALS TO BE USED AS SHOWN IN THE DRAWING.
3. SURFACE FINISH TO BE AS SHOWN IN THE DRAWING.
4. ALL SURFACES TO BE POLISHED UNLESS OTHERWISE SPECIFIED.
5. ALL DIMENSIONS ARE TO CENTER UNLESS OTHERWISE SPECIFIED.
6. ALL DIMENSIONS ARE TO FACE UNLESS OTHERWISE SPECIFIED.
7. ALL DIMENSIONS ARE TO CENTER UNLESS OTHERWISE SPECIFIED.
8. ALL DIMENSIONS ARE TO FACE UNLESS OTHERWISE SPECIFIED.

METER FEEDS USED WITH 63-V-011 10-01-55 X OF 1/4" REBAR LUTES

SEAL, HOT STOPPER, 63-V-011 (20 REBAR LUTES)

REACTOR CELL



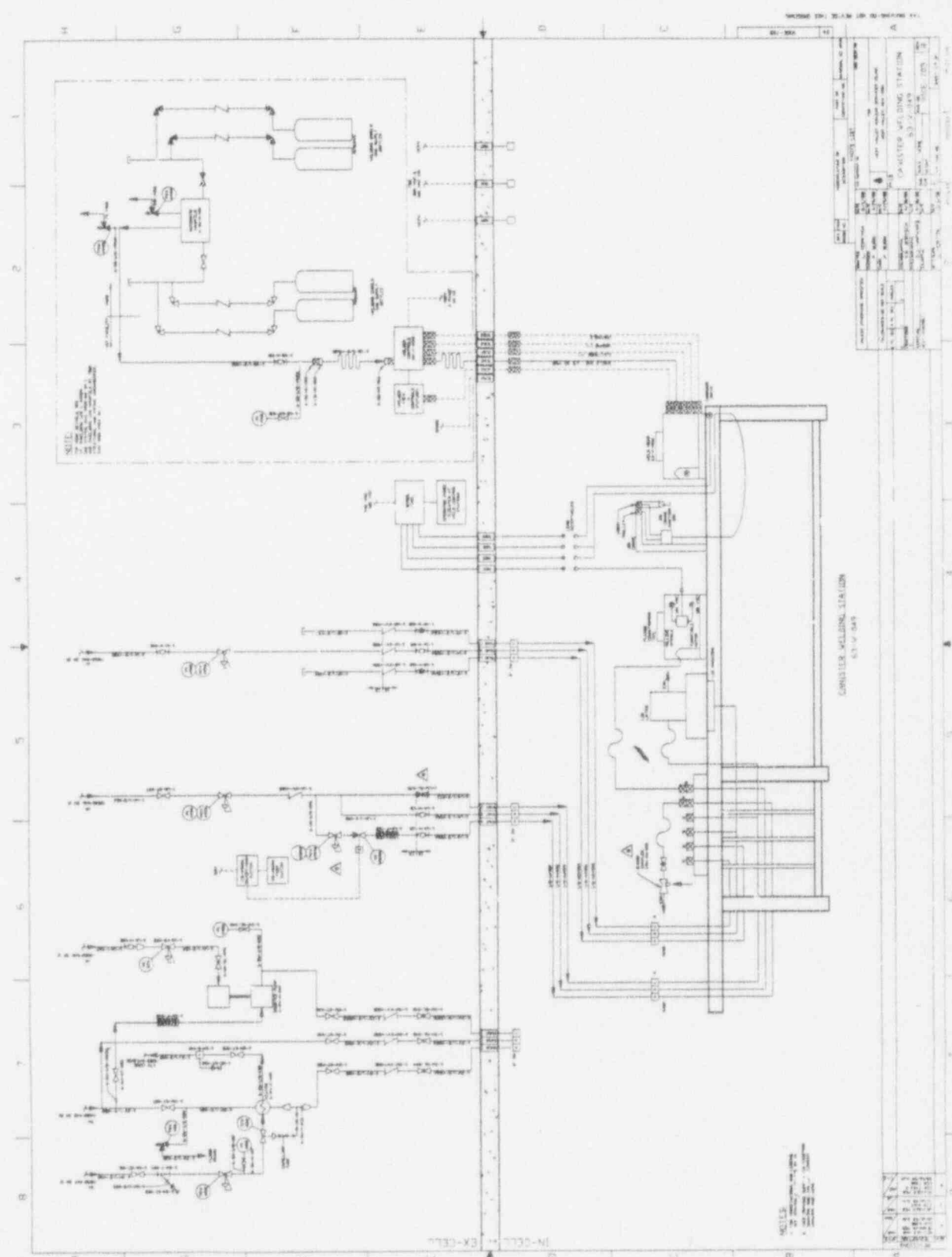
FOR INFORMATION ONLY

NOTES

- 1. ALL DIMENSIONS ARE IN INCHES UNLESS OTHERWISE SPECIFIED.
- 2. ALL MATERIALS ARE TO BE OF THE BEST QUALITY AVAILABLE.
- 3. ALL WORK IS TO BE DONE IN ACCORDANCE WITH THE NATIONAL ELECTRICAL CODE.
- 4. ALL WIRING IS TO BE DONE IN ACCORDANCE WITH THE NATIONAL ELECTRICAL CODE.
- 5. ALL WORK IS TO BE DONE IN ACCORDANCE WITH THE NATIONAL ELECTRICAL CODE.

NO.	DATE	BY	DESCRIPTION
1			
2			
3			
4			
5			
6			
7			
8			
9			
10			

DRAWN BY: [Signature]
 CHECKED BY: [Signature]
 SCALE: 1/4" = 1'-0"
 SHEET NO. 1 OF 1



CONVERTER WELDING STATION

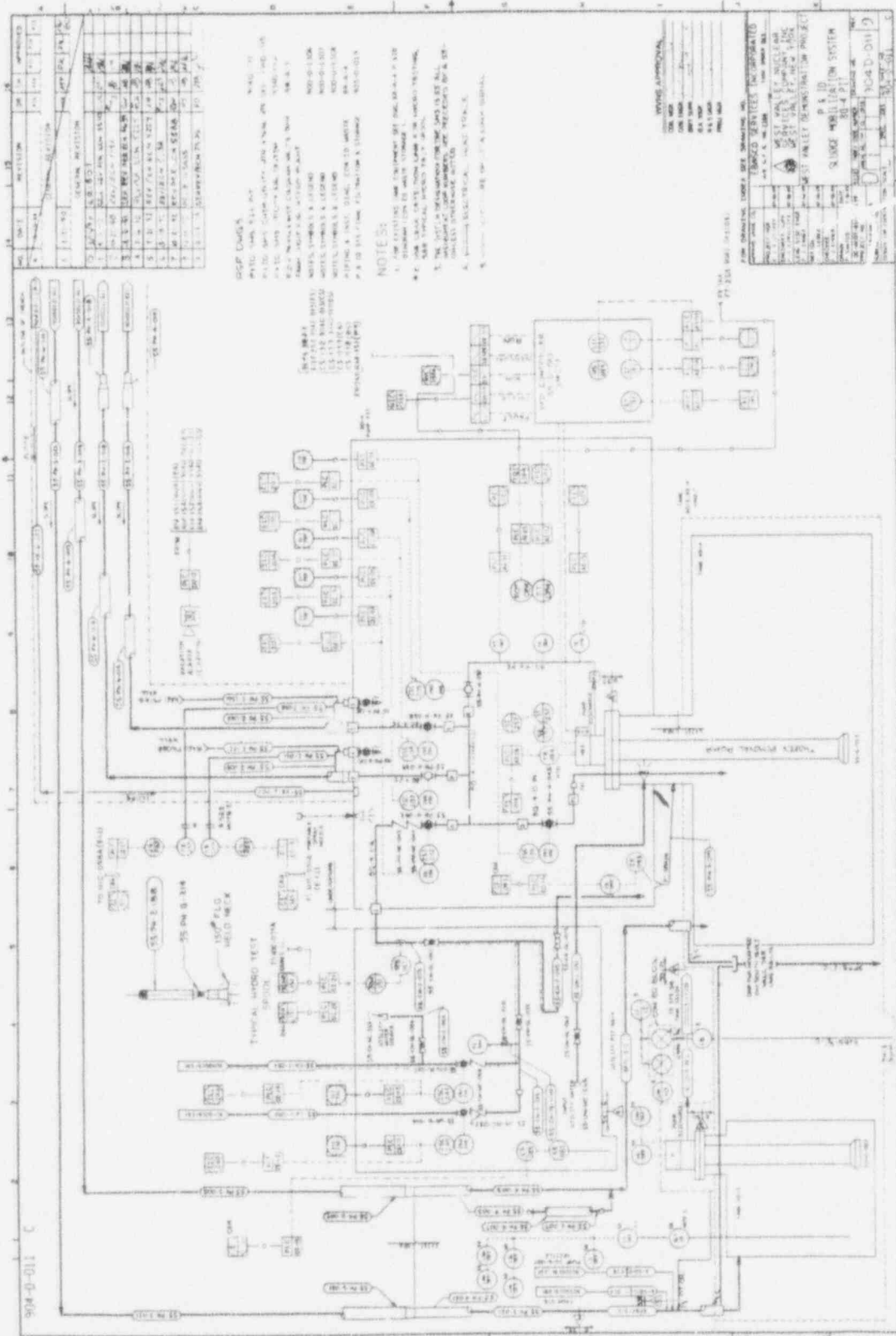
PROJECT NO.	DATE
DRAWN BY	CHECKED BY
APPROVED BY	REVISIONS
1. [] 2. [] 3. []	

CONVERTER WELDING STATION
SHEET NO. 1

SCALE:
 1" = 1'-0"
 1/4" = 3'-0"

NO.	DATE	BY	DESCRIPTION
1			
2			
3			

94-D-011



WSP DINGS

NO.	DATE	REVISION	BY	APPROVED
1				
2				
3				
4				
5				
6				
7				
8				
9				
10				
11				
12				
13				
14				
15				

NOTES:

1. SEE DRAWING FOR WSP DINGS.
2. SEE DRAWING FOR WSP DINGS.
3. SEE DRAWING FOR WSP DINGS.
4. SEE DRAWING FOR WSP DINGS.
5. SEE DRAWING FOR WSP DINGS.
6. SEE DRAWING FOR WSP DINGS.
7. SEE DRAWING FOR WSP DINGS.
8. SEE DRAWING FOR WSP DINGS.
9. SEE DRAWING FOR WSP DINGS.
10. SEE DRAWING FOR WSP DINGS.
11. SEE DRAWING FOR WSP DINGS.
12. SEE DRAWING FOR WSP DINGS.
13. SEE DRAWING FOR WSP DINGS.
14. SEE DRAWING FOR WSP DINGS.
15. SEE DRAWING FOR WSP DINGS.

WSP APPROVALS

NO.	DATE	REVISION	BY	APPROVED
1				
2				
3				
4				
5				
6				
7				
8				
9				
10				
11				
12				
13				
14				
15				

PROJECT INFORMATION

PROJECT NO. 94-D-011

CLIENT: [REDACTED]

DATE: [REDACTED]

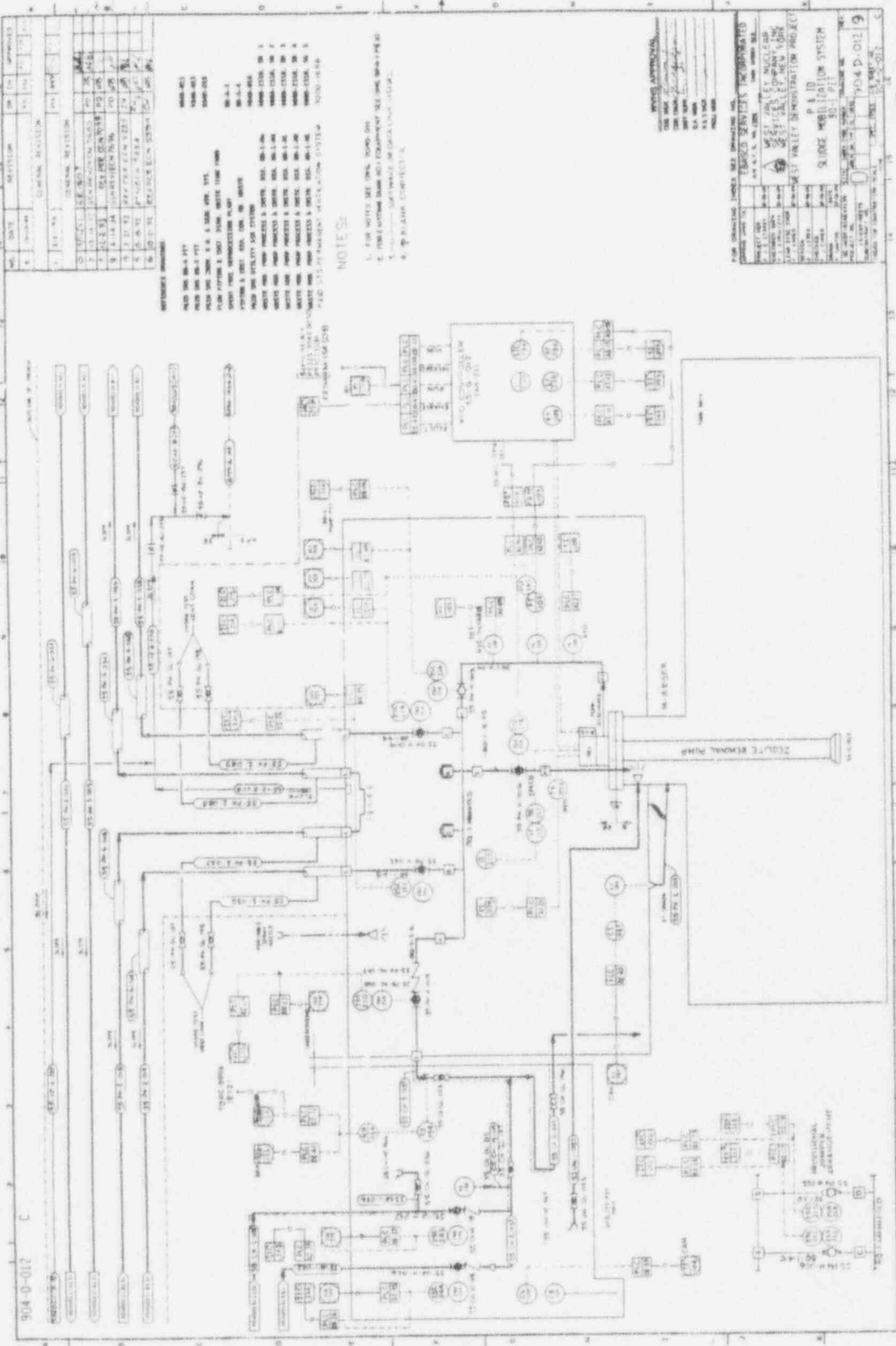
SCALE: [REDACTED]

DESIGNER: [REDACTED]

CHECKER: [REDACTED]

APPROVED: [REDACTED]

9M-D-472



NO.	DATE	REVISION	BY	APPROVED
1	10-1-53	DESIGN	J. J. [unclear]	[unclear]
2	10-1-53	REVISION	J. J. [unclear]	[unclear]
3	10-1-53	REVISION	J. J. [unclear]	[unclear]
4	10-1-53	REVISION	J. J. [unclear]	[unclear]
5	10-1-53	REVISION	J. J. [unclear]	[unclear]
6	10-1-53	REVISION	J. J. [unclear]	[unclear]
7	10-1-53	REVISION	J. J. [unclear]	[unclear]
8	10-1-53	REVISION	J. J. [unclear]	[unclear]
9	10-1-53	REVISION	J. J. [unclear]	[unclear]

REVISIONS:

1. ADD 200 G.P.M. PUMP TO SYSTEM TO HANDLE PEAK FLOW.

2. ADD 200 G.P.M. PUMP TO SYSTEM TO HANDLE PEAK FLOW.

3. ADD 200 G.P.M. PUMP TO SYSTEM TO HANDLE PEAK FLOW.

4. ADD 200 G.P.M. PUMP TO SYSTEM TO HANDLE PEAK FLOW.

5. ADD 200 G.P.M. PUMP TO SYSTEM TO HANDLE PEAK FLOW.

6. ADD 200 G.P.M. PUMP TO SYSTEM TO HANDLE PEAK FLOW.

7. ADD 200 G.P.M. PUMP TO SYSTEM TO HANDLE PEAK FLOW.

8. ADD 200 G.P.M. PUMP TO SYSTEM TO HANDLE PEAK FLOW.

9. ADD 200 G.P.M. PUMP TO SYSTEM TO HANDLE PEAK FLOW.

NOTES:

1. FOR WATER USE ONLY, 200 G.P.M. PUMP.

2. FOR COLD WATER USE ONLY, 200 G.P.M. PUMP.

3. FOR HOT WATER USE ONLY, 200 G.P.M. PUMP.

4. FOR STEAM USE ONLY, 200 G.P.M. PUMP.

FOR APPROVAL:

DATE: 10-1-53

BY: J. J. [unclear]

APPROVED: [unclear]

FOR APPROVAL:

DATE: 10-1-53

BY: J. J. [unclear]

APPROVED: [unclear]

FOR APPROVAL:

DATE: 10-1-53

BY: J. J. [unclear]

APPROVED: [unclear]

FOR APPROVAL:

DATE: 10-1-53

BY: J. J. [unclear]

APPROVED: [unclear]

FOR APPROVAL:

DATE: 10-1-53

BY: J. J. [unclear]

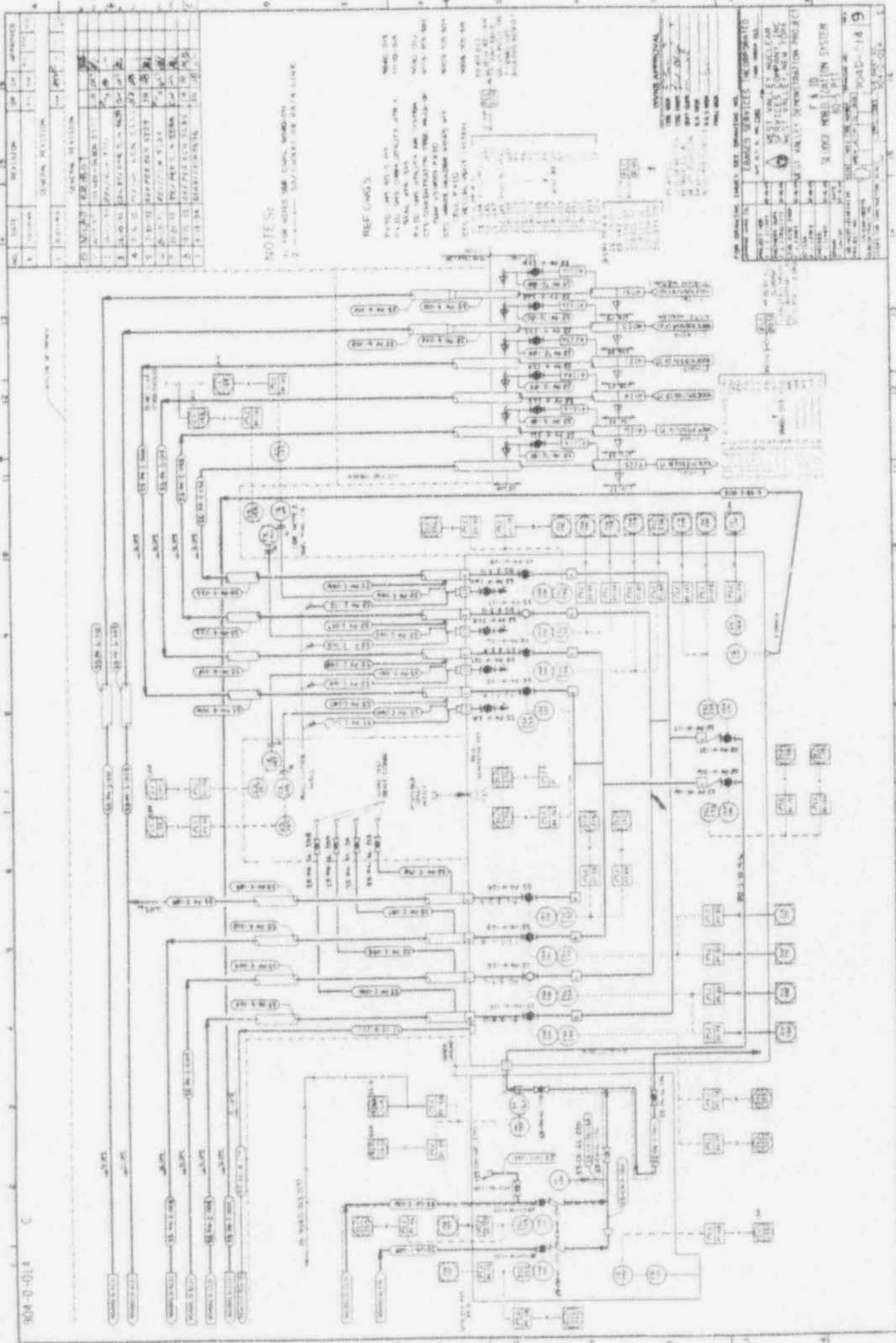
APPROVED: [unclear]

9M-D-012

1 2 3 4 5 6 7 8 9

A B C D

904-D-014



NO.	DATE	REVISION	BY	APPROVED
1				
2				
3				
4				
5				
6				
7				
8				
9				
10				
11				
12				
13				
14				
15				

NOTE S:
 1. FOR NOTES SEE CABLE MOUNTING SOFTWARE OR DATA LINE

REF. DIMS:

- 1. 1/8" DIA. HOLES FOR MOUNTING
- 2. 1/16" DIA. HOLES FOR MOUNTING
- 3. 1/32" DIA. HOLES FOR MOUNTING
- 4. 1/64" DIA. HOLES FOR MOUNTING
- 5. 1/128" DIA. HOLES FOR MOUNTING
- 6. 1/256" DIA. HOLES FOR MOUNTING
- 7. 1/512" DIA. HOLES FOR MOUNTING
- 8. 1/1024" DIA. HOLES FOR MOUNTING
- 9. 1/2048" DIA. HOLES FOR MOUNTING
- 10. 1/4096" DIA. HOLES FOR MOUNTING
- 11. 1/8192" DIA. HOLES FOR MOUNTING
- 12. 1/16384" DIA. HOLES FOR MOUNTING
- 13. 1/32768" DIA. HOLES FOR MOUNTING
- 14. 1/65536" DIA. HOLES FOR MOUNTING
- 15. 1/131072" DIA. HOLES FOR MOUNTING
- 16. 1/262144" DIA. HOLES FOR MOUNTING
- 17. 1/524288" DIA. HOLES FOR MOUNTING
- 18. 1/1048576" DIA. HOLES FOR MOUNTING
- 19. 1/2097152" DIA. HOLES FOR MOUNTING
- 20. 1/4194304" DIA. HOLES FOR MOUNTING
- 21. 1/8388608" DIA. HOLES FOR MOUNTING
- 22. 1/16777216" DIA. HOLES FOR MOUNTING
- 23. 1/33554432" DIA. HOLES FOR MOUNTING
- 24. 1/67108864" DIA. HOLES FOR MOUNTING
- 25. 1/134217728" DIA. HOLES FOR MOUNTING
- 26. 1/268435456" DIA. HOLES FOR MOUNTING
- 27. 1/536870912" DIA. HOLES FOR MOUNTING
- 28. 1/1073741824" DIA. HOLES FOR MOUNTING
- 29. 1/2147483648" DIA. HOLES FOR MOUNTING
- 30. 1/4294967296" DIA. HOLES FOR MOUNTING
- 31. 1/8589934592" DIA. HOLES FOR MOUNTING
- 32. 1/17179869184" DIA. HOLES FOR MOUNTING
- 33. 1/34359738368" DIA. HOLES FOR MOUNTING
- 34. 1/68719476736" DIA. HOLES FOR MOUNTING
- 35. 1/137438953472" DIA. HOLES FOR MOUNTING
- 36. 1/274877906944" DIA. HOLES FOR MOUNTING
- 37. 1/549755813888" DIA. HOLES FOR MOUNTING
- 38. 1/1099511627776" DIA. HOLES FOR MOUNTING
- 39. 1/2199023255552" DIA. HOLES FOR MOUNTING
- 40. 1/4398046511104" DIA. HOLES FOR MOUNTING
- 41. 1/8796093022208" DIA. HOLES FOR MOUNTING
- 42. 1/17592186044416" DIA. HOLES FOR MOUNTING
- 43. 1/35184372088832" DIA. HOLES FOR MOUNTING
- 44. 1/70368744177664" DIA. HOLES FOR MOUNTING
- 45. 1/140737488355328" DIA. HOLES FOR MOUNTING
- 46. 1/281474976710656" DIA. HOLES FOR MOUNTING
- 47. 1/562949953421312" DIA. HOLES FOR MOUNTING
- 48. 1/1125899906842624" DIA. HOLES FOR MOUNTING
- 49. 1/2251799813685248" DIA. HOLES FOR MOUNTING
- 50. 1/4503599627370496" DIA. HOLES FOR MOUNTING
- 51. 1/9007199254740992" DIA. HOLES FOR MOUNTING
- 52. 1/18014398509481984" DIA. HOLES FOR MOUNTING
- 53. 1/36028797018963968" DIA. HOLES FOR MOUNTING
- 54. 1/72057594037927936" DIA. HOLES FOR MOUNTING
- 55. 1/14411518807585584" DIA. HOLES FOR MOUNTING
- 56. 1/28823037615171168" DIA. HOLES FOR MOUNTING
- 57. 1/57646075230342336" DIA. HOLES FOR MOUNTING
- 58. 1/115292150460684672" DIA. HOLES FOR MOUNTING
- 59. 1/230584300921369344" DIA. HOLES FOR MOUNTING
- 60. 1/461168601842738688" DIA. HOLES FOR MOUNTING
- 61. 1/922337203685477376" DIA. HOLES FOR MOUNTING
- 62. 1/1844674407370954752" DIA. HOLES FOR MOUNTING
- 63. 1/3689348814741909504" DIA. HOLES FOR MOUNTING
- 64. 1/7378697629483819008" DIA. HOLES FOR MOUNTING
- 65. 1/14757395258967638016" DIA. HOLES FOR MOUNTING
- 66. 1/29514790517935276032" DIA. HOLES FOR MOUNTING
- 67. 1/59029581035870552064" DIA. HOLES FOR MOUNTING
- 68. 1/118059162071741104128" DIA. HOLES FOR MOUNTING
- 69. 1/236118324143482208256" DIA. HOLES FOR MOUNTING
- 70. 1/472236648286964416512" DIA. HOLES FOR MOUNTING
- 71. 1/944473296573928833024" DIA. HOLES FOR MOUNTING
- 72. 1/1888946593147857666048" DIA. HOLES FOR MOUNTING
- 73. 1/3777893186295715332096" DIA. HOLES FOR MOUNTING
- 74. 1/7555786372591430664192" DIA. HOLES FOR MOUNTING
- 75. 1/15111572745182861328384" DIA. HOLES FOR MOUNTING
- 76. 1/30223145490365722656768" DIA. HOLES FOR MOUNTING
- 77. 1/60446290980731445313536" DIA. HOLES FOR MOUNTING
- 78. 1/120892581961462890627072" DIA. HOLES FOR MOUNTING
- 79. 1/241785163922925781254144" DIA. HOLES FOR MOUNTING
- 80. 1/483570327845851562508288" DIA. HOLES FOR MOUNTING
- 81. 1/967140655691703125017152" DIA. HOLES FOR MOUNTING
- 82. 1/193428131138340625035424" DIA. HOLES FOR MOUNTING
- 83. 1/386856262276681250370848" DIA. HOLES FOR MOUNTING
- 84. 1/773712524553362500741696" DIA. HOLES FOR MOUNTING
- 85. 1/1547425049106725003483392" DIA. HOLES FOR MOUNTING
- 86. 1/3094850098213450006966784" DIA. HOLES FOR MOUNTING
- 87. 1/6189700196426900013933568" DIA. HOLES FOR MOUNTING
- 88. 1/12379400392853800027867136" DIA. HOLES FOR MOUNTING
- 89. 1/24758800785707600055734272" DIA. HOLES FOR MOUNTING
- 90. 1/49517601571415200111468544" DIA. HOLES FOR MOUNTING
- 91. 1/99035203142830400222937088" DIA. HOLES FOR MOUNTING
- 92. 1/198070406285660800445874176" DIA. HOLES FOR MOUNTING
- 93. 1/396140812571321600891748352" DIA. HOLES FOR MOUNTING
- 94. 1/792281625142643201783496704" DIA. HOLES FOR MOUNTING
- 95. 1/1584563250285286403566993408" DIA. HOLES FOR MOUNTING
- 96. 1/3169126500570572807133986816" DIA. HOLES FOR MOUNTING
- 97. 1/6338253001141145614267973632" DIA. HOLES FOR MOUNTING
- 98. 1/12676506002282291228535947264" DIA. HOLES FOR MOUNTING
- 99. 1/25353012004564582457071894528" DIA. HOLES FOR MOUNTING
- 100. 1/50706024009129164914143989056" DIA. HOLES FOR MOUNTING
- 101. 1/101412048018258329828287978112" DIA. HOLES FOR MOUNTING
- 102. 1/202824096036516659656575956224" DIA. HOLES FOR MOUNTING
- 103. 1/405648192073033319313151912448" DIA. HOLES FOR MOUNTING
- 104. 1/811296384146066638626303824896" DIA. HOLES FOR MOUNTING
- 105. 1/1622592768292133277252607649792" DIA. HOLES FOR MOUNTING
- 106. 1/3245185536584266554505215299584" DIA. HOLES FOR MOUNTING
- 107. 1/6490371073168533109010430599168" DIA. HOLES FOR MOUNTING
- 108. 1/12980742146337066218020861198336" DIA. HOLES FOR MOUNTING
- 109. 1/25961484292674132436041722396672" DIA. HOLES FOR MOUNTING
- 110. 1/51922968585348264872083444793344" DIA. HOLES FOR MOUNTING
- 111. 1/103845937170696529744166889586688" DIA. HOLES FOR MOUNTING
- 112. 1/207691874341393059488333779173376" DIA. HOLES FOR MOUNTING
- 113. 1/415383748682786118976667558346752" DIA. HOLES FOR MOUNTING
- 114. 1/830767497365572237953335116693504" DIA. HOLES FOR MOUNTING
- 115. 1/1661534994731144475906670233781008" DIA. HOLES FOR MOUNTING
- 116. 1/3323069989462288951813340467562016" DIA. HOLES FOR MOUNTING
- 117. 1/6646139978924577903626680935124032" DIA. HOLES FOR MOUNTING
- 118. 1/13292279957849155807253361870248064" DIA. HOLES FOR MOUNTING
- 119. 1/26584559915698311614506723740496128" DIA. HOLES FOR MOUNTING
- 120. 1/53169119831396623229013447480992256" DIA. HOLES FOR MOUNTING
- 121. 1/106338239662793246458026894961985024" DIA. HOLES FOR MOUNTING
- 122. 1/212676479325586492916053789923970048" DIA. HOLES FOR MOUNTING
- 123. 1/425352958651172985832107579847940096" DIA. HOLES FOR MOUNTING
- 124. 1/85070591730234597166421515969580192" DIA. HOLES FOR MOUNTING
- 125. 1/170141183460469194332843031939160384" DIA. HOLES FOR MOUNTING
- 126. 1/340282366920938388665686063878320768" DIA. HOLES FOR MOUNTING
- 127. 1/680564733841876777331372127756641536" DIA. HOLES FOR MOUNTING
- 128. 1/1361129467683753554662744255513283072" DIA. HOLES FOR MOUNTING
- 129. 1/2722258935367507109325488511026566144" DIA. HOLES FOR MOUNTING
- 130. 1/5444517870735014218650977022053132288" DIA. HOLES FOR MOUNTING
- 131. 1/10889035741470028437301954044106264576" DIA. HOLES FOR MOUNTING
- 132. 1/21778071482940056874603908088212529152" DIA. HOLES FOR MOUNTING
- 133. 1/43556142965880113749207816176425058304" DIA. HOLES FOR MOUNTING
- 134. 1/87112285931760227498415632352850116608" DIA. HOLES FOR MOUNTING
- 135. 1/174224571835520449996831264705702232128" DIA. HOLES FOR MOUNTING
- 136. 1/348449143671040899993662529411404464256" DIA. HOLES FOR MOUNTING
- 137. 1/696898287342081799987325058822808928512" DIA. HOLES FOR MOUNTING
- 138. 1/1393796574684163599974650117645739856024" DIA. HOLES FOR MOUNTING
- 139. 1/2787593149368327199949300235291479712048" DIA. HOLES FOR MOUNTING
- 140. 1/5575186298736654399898600470582958240096" DIA. HOLES FOR MOUNTING
- 141. 1/1115037259747330879979720094116591640192" DIA. HOLES FOR MOUNTING
- 142. 1/2230074519494661759959440188233183280384" DIA. HOLES FOR MOUNTING
- 143. 1/4460149038989323519918880376466366560768" DIA. HOLES FOR MOUNTING
- 144. 1/8920298077978647039837760752932733121536" DIA. HOLES FOR MOUNTING
- 145. 1/17840596155957294079675521505865466243072" DIA. HOLES FOR MOUNTING
- 146. 1/35681192311914588159351043011730932486144" DIA. HOLES FOR MOUNTING
- 147. 1/7136238462382917631870208602346186492288" DIA. HOLES FOR MOUNTING
- 148. 1/14272476924765835237740417204692372984576" DIA. HOLES FOR MOUNTING
- 149. 1/28544953849531670475480834409384745969152" DIA. HOLES FOR MOUNTING
- 150. 1/57089907699063340950961668818769491938304" DIA. HOLES FOR MOUNTING
- 151. 1/11417981539812668190192333763753898377664" DIA. HOLES FOR MOUNTING
- 152. 1/22835963079625336380384667527507796755328" DIA. HOLES FOR MOUNTING
- 153. 1/45671926159250672760769335055015593510656" DIA. HOLES FOR MOUNTING
- 154. 1/9134385231850134552153867011003118902112" DIA. HOLES FOR MOUNTING
- 155. 1/18268770437700269104307734022006237804224" DIA. HOLES FOR MOUNTING
- 156. 1/36537540875400538208615468044012475608448" DIA. HOLES FOR MOUNTING
- 157. 1/73075081750801076417230936088024951216896" DIA. HOLES FOR MOUNTING
- 158. 1/14615016350160215283446182137649902433792" DIA. HOLES FOR MOUNTING
- 159. 1/29230032700320430566892364275299804867584" DIA. HOLES FOR MOUNTING
- 160. 1/58460065400640861133784728550599609735168" DIA. HOLES FOR MOUNTING
- 161. 1/116920130801281722267569457101193219470336" DIA. HOLES FOR MOUNTING
- 162. 1/233840261602563444535138914202386438940672" DIA. HOLES FOR MOUNTING
- 163. 1/467680523205126889070277828404772877881248" DIA. HOLES FOR MOUNTING
- 164. 1/93536104641025377814055565680954575576256" DIA. HOLES FOR MOUNTING
- 165. 1/187072209282050755628111131361909151152512" DIA. HOLES FOR MOUNTING
- 166. 1/374144418564101511256222262723818230225248" DIA. HOLES FOR MOUNTING
- 167. 1/748288837128203022512444525447636460450496" DIA. HOLES FOR MOUNTING
- 168. 1/1496577674256406045024890508895272920900928" DIA. HOLES FOR MOUNTING
- 169. 1/2993155348512812090049780017795455841801856" DIA. HOLES FOR MOUNTING
- 170. 1/5986310697025624180099560035590911603603712" DIA. HOLES FOR MOUNTING
- 171. 1/11972621394051248360191200071818222407207424" DIA. HOLES FOR MOUNTING
- 172. 1/23945242788102496720382400143636444814414848" DIA. HOLES FOR MOUNTING
- 173. 1/47890485576204993440764800287272889628829696" DIA. HOLES FOR MOUNTING
- 174. 1/9578097115240998688153600057454779365779328" DIA. HOLES FOR MOUNTING
- 175. 1/19156194230481997376307200114895548711558656" DIA. HOLES FOR MOUNTING
- 176. 1/383123884609639947526144002297910942231171392" DIA. HOLES FOR MOUNTING
- 177. 1/766247769219279895052288004595821884422342784" DIA. HOLES FOR MOUNTING
- 178. 1/1532495538438559790104576009117643736844465568" DIA. HOLES FOR MOUNTING
- 179. 1/30649910768771195802091520182328747368889111136" DIA. HOLES FOR MOUNTING
- 180. 1/6129982153754239160418304036465747368889111136" DIA. HOLES FOR MOUNTING

DESIGNED BY: [Signature]

DATE: [Date]

PROJECT: RUNGE MODULATION SYSTEM

BOARD: 14

COMPANY: [Company Name]

ADDRESS: [Address]

PHONE: [Phone Number]

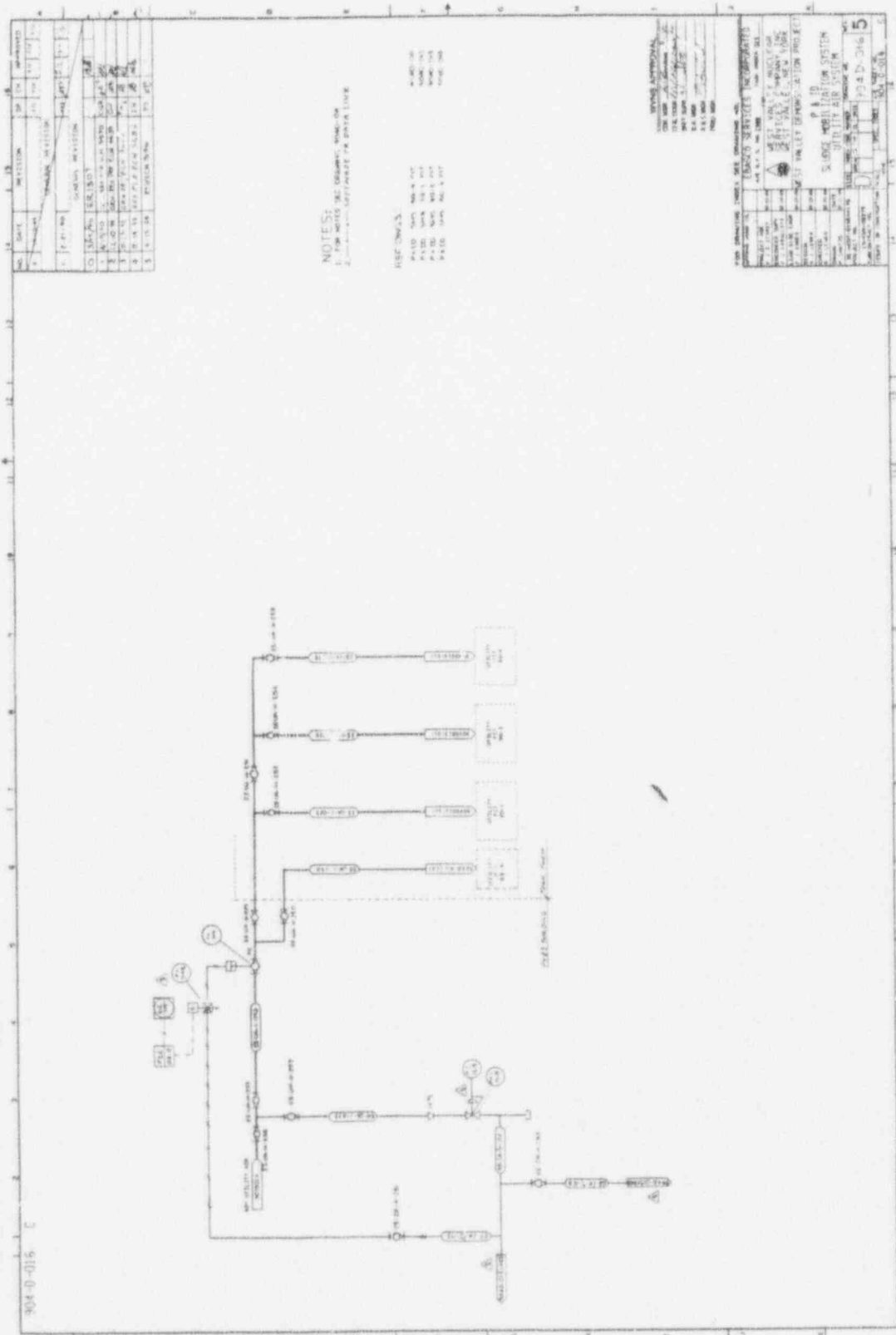
TELETYPE: [Teletype Number]

FAX: [Fax Number]

EMAIL: [Email Address]

WEBSITE: [Website URL]

904-D-016



NO.	DATE	REVISION	BY	APP'D.
1	10-15-54	DESIGN	W. J.
2	11-15-54
3	12-15-54
4	1-15-55
5	2-15-55
6	3-15-55
7	4-15-55
8	5-15-55
9	6-15-55
10	7-15-55
11	8-15-55
12	9-15-55
13	10-15-55
14	11-15-55
15	12-15-55

NOTES:
1. FOR NOTES SEE GENERAL SPECIFICATIONS
2. SEE ATTACHED PLANS FOR OTHER LINES

REVISIONS:
NO. DATE BY
1 10-15-54 W. J. ...
2 11-15-54 ...
3 12-15-54 ...
4 1-15-55 ...
5 2-15-55 ...

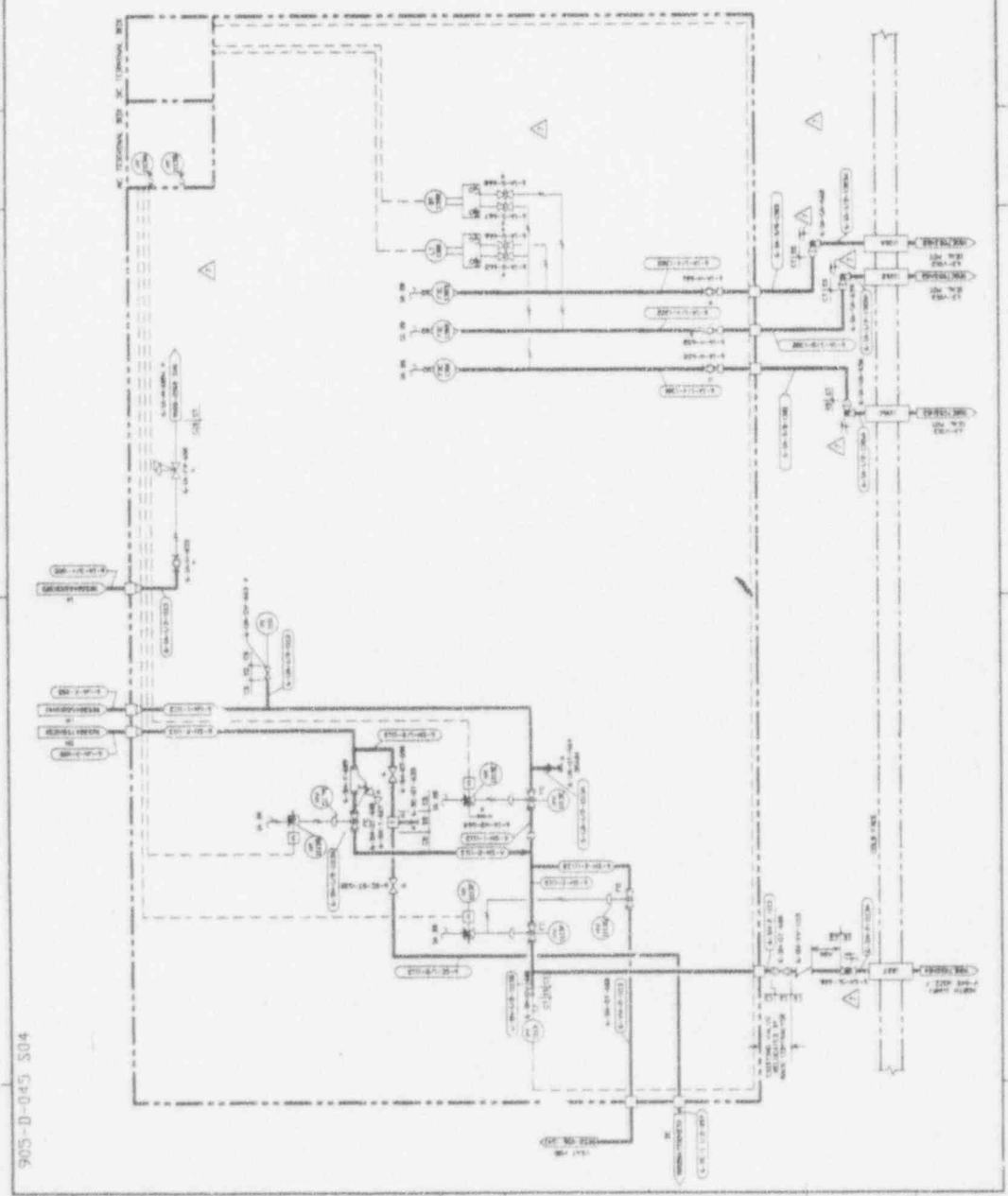
ENGINEER
DATE
BY
CHECKED
DATE
BY

STANDARD SERVICE CORPORATION
1000 ...
P. A. D.
5. LARGE WATER DISTRIBUTION SYSTEM
UTILITY DEPARTMENT
ST. VALLEY DEMONSTRATION PROJECT
904-D-016
5

D 11 12 13 14 15 16 17 18 19 20 21 22 23 24 25 26 27 28 29 30 31 32 33 34 35 36 37 38 39 40 41 42 43 44 45 46 47 48 49 50 51 52 53 54 55 56 57 58 59 60 61 62 63 64 65 66 67 68 69 70 71 72 73 74 75 76 77 78 79 80 81 82 83 84 85 86 87 88 89 90 91 92 93 94 95 96 97 98 99 100

NO.	DATE	BY	REVISION	AS SHOWN	AS NOTED
1	01/15/04
2	01/20/04
3	01/25/04
4	01/30/04
5	02/05/04
6	02/10/04
7	02/15/04
8	02/20/04
9	02/25/04
10	03/01/04
11	03/05/04
12	03/10/04
13	03/15/04
14	03/20/04
15	03/25/04
16	04/01/04
17	04/05/04
18	04/10/04
19	04/15/04
20	04/20/04
21	04/25/04
22	05/01/04
23	05/05/04
24	05/10/04
25	05/15/04
26	05/20/04
27	05/25/04
28	06/01/04
29	06/05/04
30	06/10/04
31	06/15/04
32	06/20/04
33	06/25/04
34	07/01/04
35	07/05/04
36	07/10/04
37	07/15/04
38	07/20/04
39	07/25/04
40	08/01/04
41	08/05/04
42	08/10/04
43	08/15/04
44	08/20/04
45	08/25/04
46	09/01/04
47	09/05/04
48	09/10/04
49	09/15/04
50	09/20/04
51	09/25/04
52	10/01/04
53	10/05/04
54	10/10/04
55	10/15/04
56	10/20/04
57	10/25/04
58	11/01/04
59	11/05/04
60	11/10/04
61	11/15/04
62	11/20/04
63	11/25/04
64	12/01/04
65	12/05/04
66	12/10/04
67	12/15/04
68	12/20/04
69	12/25/04
70	01/01/05

NOTES:
 1. ALL INSTRUMENTS & VALVES TO BE INSTALLED IN THIS LOCATION UNLESS INDICATED OTHERWISE.
 2. SEE PLAN SHEET FOR DIMENSIONS & ELEVATIONS.
 3. SEE SPECIFICATIONS FOR MATERIALS & METHODS.



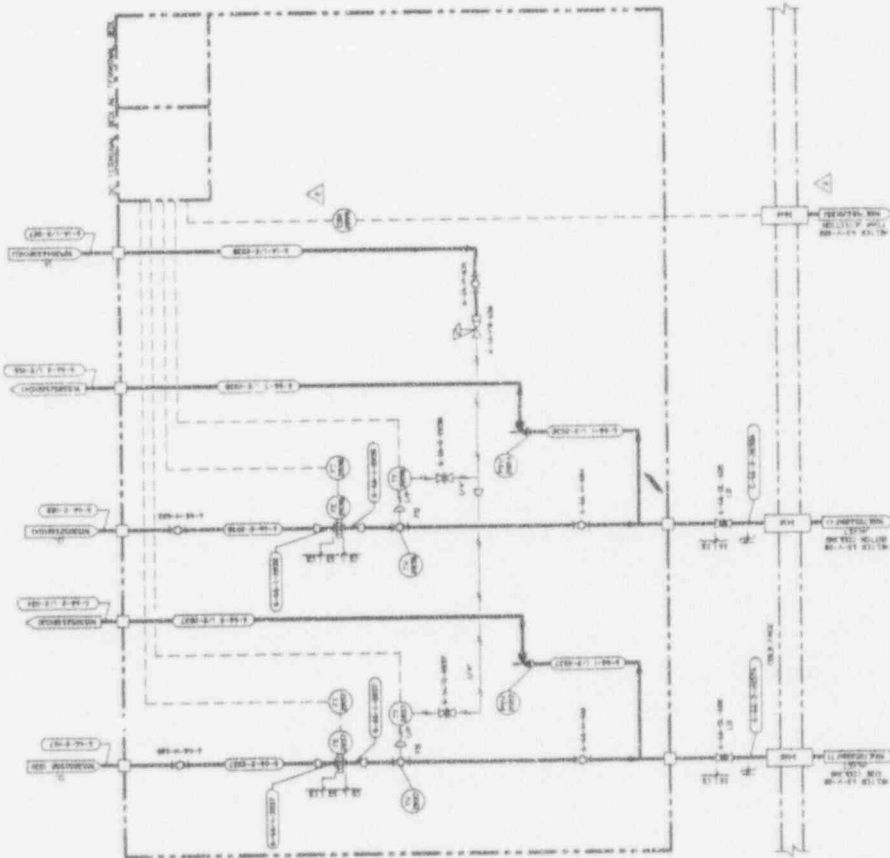
905-D-045_S04

NO.	DATE	BY	REVISION	AS SHOWN	AS NOTED
1	01/15/04
2	01/20/04
3	01/25/04
4	01/30/04
5	02/05/04
6	02/10/04
7	02/15/04
8	02/20/04
9	02/25/04
10	03/01/04
11	03/05/04
12	03/10/04
13	03/15/04
14	03/20/04
15	03/25/04
16	04/01/04
17	04/05/04
18	04/10/04
19	04/15/04
20	04/20/04
21	04/25/04
22	05/01/04
23	05/05/04
24	05/10/04
25	05/15/04
26	05/20/04
27	05/25/04
28	06/01/04
29	06/05/04
30	06/10/04
31	06/15/04
32	06/20/04
33	06/25/04
34	07/01/04
35	07/05/04
36	07/10/04
37	07/15/04
38	07/20/04
39	07/25/04
40	08/01/04
41	08/05/04
42	08/10/04
43	08/15/04
44	08/20/04
45	08/25/04
46	09/01/04
47	09/05/04
48	09/10/04
49	09/15/04
50	09/20/04
51	09/25/04
52	10/01/04
53	10/05/04
54	10/10/04
55	10/15/04
56	10/20/04
57	10/25/04
58	11/01/04
59	11/05/04
60	11/10/04
61	11/15/04
62	11/20/04
63	11/25/04
64	12/01/04
65	12/05/04
66	12/10/04
67	12/15/04
68	12/20/04
69	12/25/04
70	01/01/05

905-D-045_S04

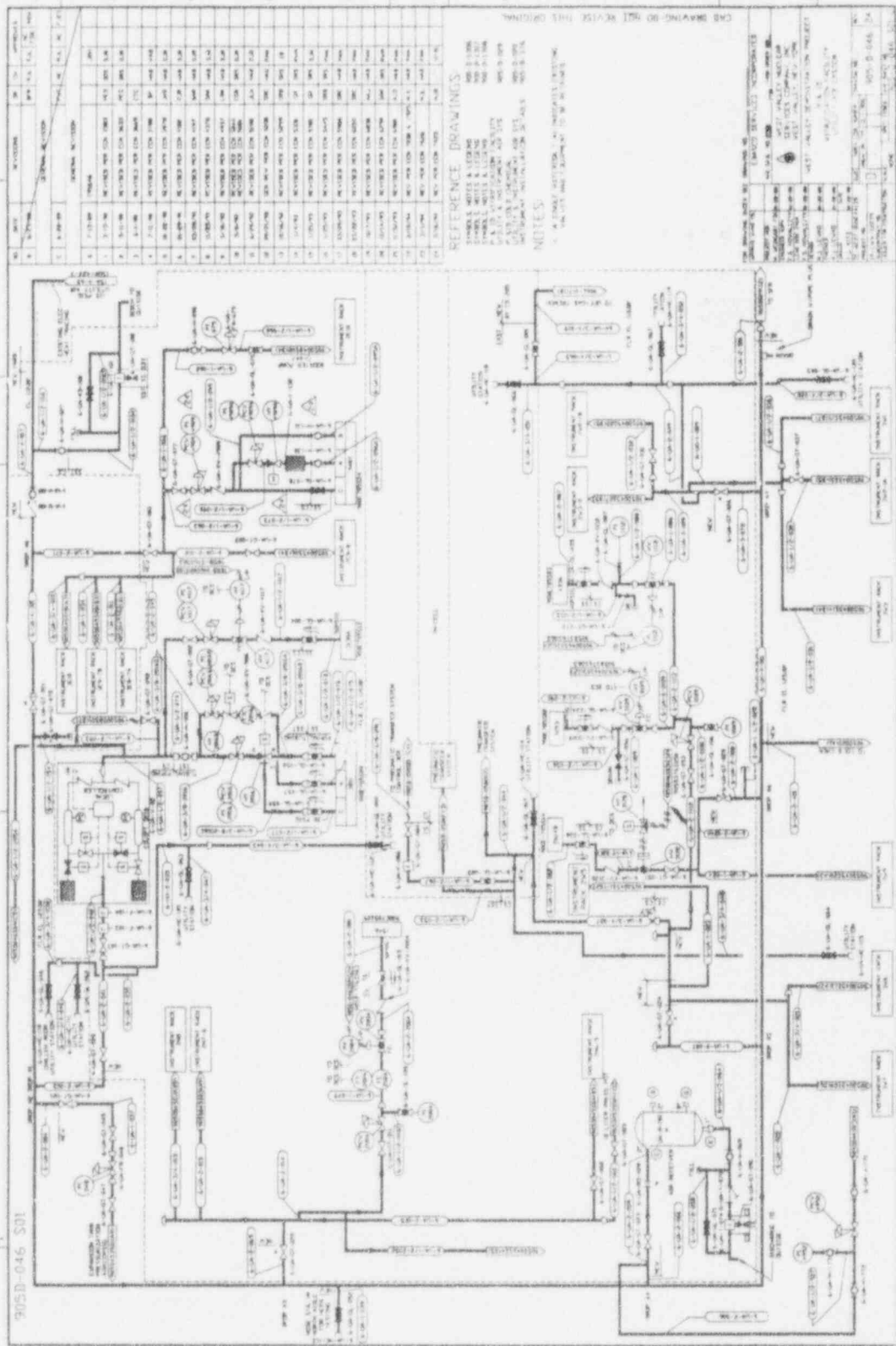
NO	REVISION	BY	DATE
1	INITIAL
2
3
4

PROJECT NO.	905-D-045
PROJECT TITLE	INSTRUMENT FACILITY
DATE	...
DESIGNED BY	...
CHECKED BY	...
SCALE	...
<p>PROPERTY OF WEST VALLEY-ARLCO WEST VALLEY DIVISION WEST VALLEY, WY</p>	



905-D-045 S19

A B C D
 1 2 3 4 5 6 7 8 9 10 11 12 13 14 15 16 17 18 19 20 21 22 23 24 25 26 27 28 29 30 31 32 33 34 35 36 37 38 39 40 41 42 43 44 45 46 47 48 49 50 51 52 53 54 55 56 57 58 59 60 61 62 63 64 65 66 67 68 69 70 71 72 73 74 75 76 77 78 79 80 81 82 83 84 85 86 87 88 89 90 91 92 93 94 95 96 97 98 99 100



905D-046 S01

REFERENCE DRAWINGS

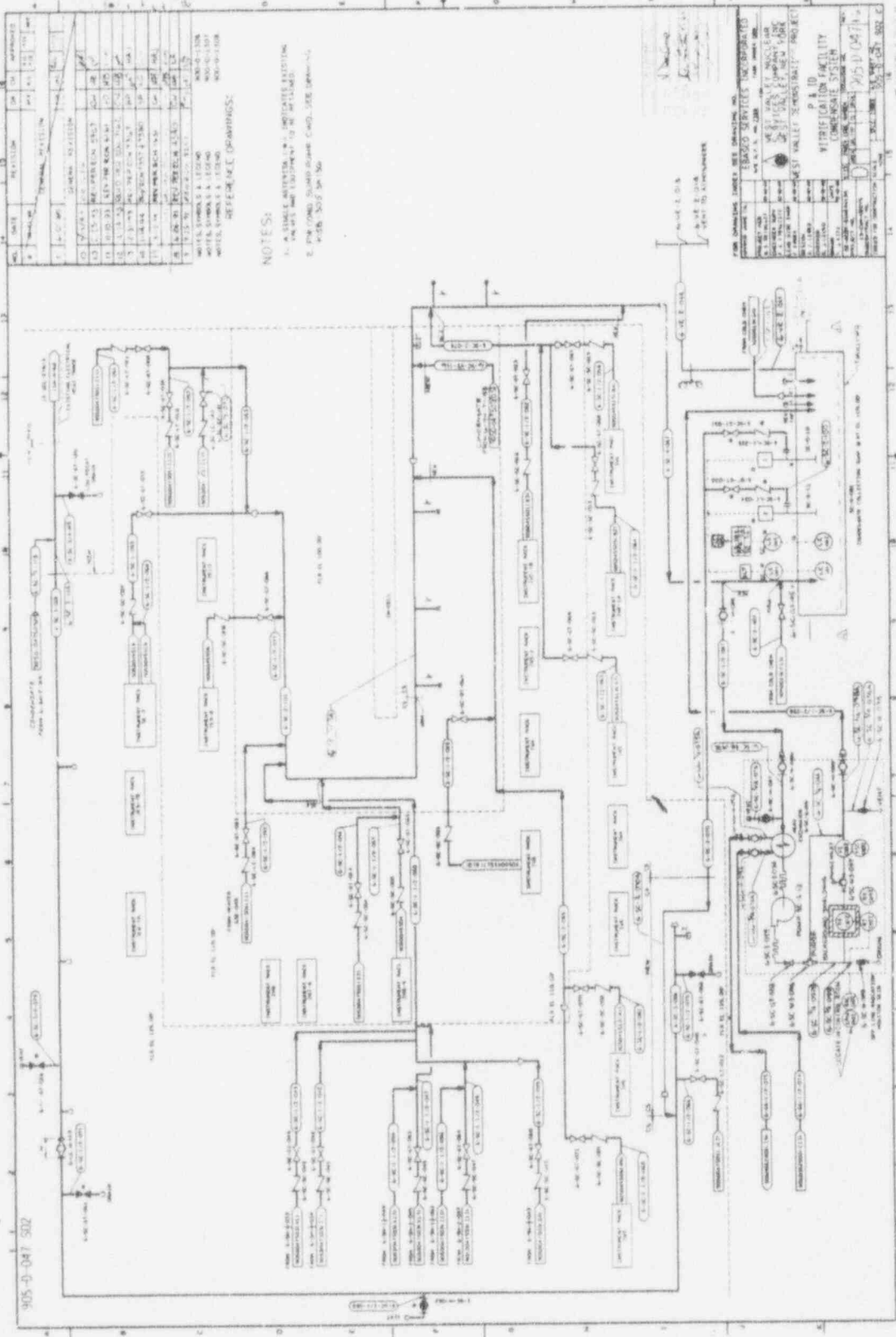
- 905 D 1000
- 905 D 1001
- 905 D 1002
- 905 D 1003
- 905 D 1004
- 905 D 1005
- 905 D 1006
- 905 D 1007
- 905 D 1008
- 905 D 1009
- 905 D 1010
- 905 D 1011
- 905 D 1012
- 905 D 1013
- 905 D 1014
- 905 D 1015
- 905 D 1016
- 905 D 1017
- 905 D 1018
- 905 D 1019
- 905 D 1020
- 905 D 1021
- 905 D 1022
- 905 D 1023
- 905 D 1024
- 905 D 1025
- 905 D 1026
- 905 D 1027
- 905 D 1028
- 905 D 1029
- 905 D 1030
- 905 D 1031
- 905 D 1032
- 905 D 1033
- 905 D 1034
- 905 D 1035
- 905 D 1036
- 905 D 1037
- 905 D 1038
- 905 D 1039
- 905 D 1040
- 905 D 1041
- 905 D 1042
- 905 D 1043
- 905 D 1044
- 905 D 1045
- 905 D 1046
- 905 D 1047
- 905 D 1048
- 905 D 1049
- 905 D 1050
- 905 D 1051
- 905 D 1052
- 905 D 1053
- 905 D 1054
- 905 D 1055
- 905 D 1056
- 905 D 1057
- 905 D 1058
- 905 D 1059
- 905 D 1060
- 905 D 1061
- 905 D 1062
- 905 D 1063
- 905 D 1064
- 905 D 1065
- 905 D 1066
- 905 D 1067
- 905 D 1068
- 905 D 1069
- 905 D 1070
- 905 D 1071
- 905 D 1072
- 905 D 1073
- 905 D 1074
- 905 D 1075
- 905 D 1076
- 905 D 1077
- 905 D 1078
- 905 D 1079
- 905 D 1080
- 905 D 1081
- 905 D 1082
- 905 D 1083
- 905 D 1084
- 905 D 1085
- 905 D 1086
- 905 D 1087
- 905 D 1088
- 905 D 1089
- 905 D 1090
- 905 D 1091
- 905 D 1092
- 905 D 1093
- 905 D 1094
- 905 D 1095
- 905 D 1096
- 905 D 1097
- 905 D 1098
- 905 D 1099
- 905 D 1100

THIS DRAWING IS NOT TO BE USED FOR CONSTRUCTION WITHOUT THE APPROVAL OF THE DESIGNER.

NOTES:
 1. ALL DIMENSIONS ARE IN INCHES UNLESS OTHERWISE SPECIFIED.
 2. ALL DIMENSIONS ARE TO CENTER UNLESS OTHERWISE SPECIFIED.
 3. ALL DIMENSIONS ARE TO FACE UNLESS OTHERWISE SPECIFIED.
 4. ALL DIMENSIONS ARE TO CENTER UNLESS OTHERWISE SPECIFIED.
 5. ALL DIMENSIONS ARE TO FACE UNLESS OTHERWISE SPECIFIED.

1 2 3 4 5 6 7 8 9 10 11 12 13 14 15 16 17 18 19 20 21 22 23 24 25 26 27 28 29 30 31 32 33 34 35 36 37 38 39 40 41 42 43 44 45 46 47 48 49 50 51 52 53 54 55 56 57 58 59 60 61 62 63 64 65 66 67 68 69 70 71 72 73 74 75 76 77 78 79 80 81 82 83 84 85 86 87 88 89 90 91 92 93 94 95 96 97 98 99 100

905D-017 2



NO.	DATE	REVISION	BY	APPROVED
1	10/15/54	INITIAL DESIGN		
2	10/20/54	GENERAL REVISION		
3	11/15/54	REVISION		
4	12/15/54	REVISION		
5	1/15/55	REVISION		
6	2/15/55	REVISION		
7	3/15/55	REVISION		
8	4/15/55	REVISION		
9	5/15/55	REVISION		
10	6/15/55	REVISION		
11	7/15/55	REVISION		
12	8/15/55	REVISION		
13	9/15/55	REVISION		
14	10/15/55	REVISION		
15	11/15/55	REVISION		
16	12/15/55	REVISION		
17	1/15/56	REVISION		
18	2/15/56	REVISION		
19	3/15/56	REVISION		
20	4/15/56	REVISION		
21	5/15/56	REVISION		
22	6/15/56	REVISION		
23	7/15/56	REVISION		
24	8/15/56	REVISION		
25	9/15/56	REVISION		
26	10/15/56	REVISION		
27	11/15/56	REVISION		
28	12/15/56	REVISION		
29	1/15/57	REVISION		
30	2/15/57	REVISION		
31	3/15/57	REVISION		
32	4/15/57	REVISION		
33	5/15/57	REVISION		
34	6/15/57	REVISION		
35	7/15/57	REVISION		
36	8/15/57	REVISION		
37	9/15/57	REVISION		
38	10/15/57	REVISION		
39	11/15/57	REVISION		
40	12/15/57	REVISION		
41	1/15/58	REVISION		
42	2/15/58	REVISION		
43	3/15/58	REVISION		
44	4/15/58	REVISION		
45	5/15/58	REVISION		
46	6/15/58	REVISION		
47	7/15/58	REVISION		
48	8/15/58	REVISION		
49	9/15/58	REVISION		
50	10/15/58	REVISION		
51	11/15/58	REVISION		
52	12/15/58	REVISION		
53	1/15/59	REVISION		
54	2/15/59	REVISION		
55	3/15/59	REVISION		
56	4/15/59	REVISION		
57	5/15/59	REVISION		
58	6/15/59	REVISION		
59	7/15/59	REVISION		
60	8/15/59	REVISION		
61	9/15/59	REVISION		
62	10/15/59	REVISION		
63	11/15/59	REVISION		
64	12/15/59	REVISION		
65	1/15/60	REVISION		
66	2/15/60	REVISION		
67	3/15/60	REVISION		
68	4/15/60	REVISION		
69	5/15/60	REVISION		
70	6/15/60	REVISION		
71	7/15/60	REVISION		
72	8/15/60	REVISION		
73	9/15/60	REVISION		
74	10/15/60	REVISION		
75	11/15/60	REVISION		
76	12/15/60	REVISION		
77	1/15/61	REVISION		
78	2/15/61	REVISION		
79	3/15/61	REVISION		
80	4/15/61	REVISION		
81	5/15/61	REVISION		
82	6/15/61	REVISION		
83	7/15/61	REVISION		
84	8/15/61	REVISION		
85	9/15/61	REVISION		
86	10/15/61	REVISION		
87	11/15/61	REVISION		
88	12/15/61	REVISION		
89	1/15/62	REVISION		
90	2/15/62	REVISION		
91	3/15/62	REVISION		
92	4/15/62	REVISION		
93	5/15/62	REVISION		
94	6/15/62	REVISION		
95	7/15/62	REVISION		
96	8/15/62	REVISION		
97	9/15/62	REVISION		
98	10/15/62	REVISION		
99	11/15/62	REVISION		
100	12/15/62	REVISION		

NOTES:

1. ALL WORK SHALL BE IN ACCORDANCE WITH THE NATIONAL ELECTRICAL CODE (NEC) AND THE NATIONAL FIRE ALARM AND SIGNAL CODE (NFPA 72).
2. THE CONTRACTOR SHALL BE RESPONSIBLE FOR OBTAINING ALL NECESSARY PERMITS AND APPROVALS FROM THE LOCAL AUTHORITIES.
3. THE CONTRACTOR SHALL BE RESPONSIBLE FOR THE PROTECTION OF ALL EXISTING UTILITIES AND STRUCTURES.
4. THE CONTRACTOR SHALL BE RESPONSIBLE FOR THE PROTECTION OF ALL EXISTING EQUIPMENT AND MATERIALS.
5. THE CONTRACTOR SHALL BE RESPONSIBLE FOR THE PROTECTION OF ALL EXISTING WORK AND MATERIALS.
6. THE CONTRACTOR SHALL BE RESPONSIBLE FOR THE PROTECTION OF ALL EXISTING WORK AND MATERIALS.
7. THE CONTRACTOR SHALL BE RESPONSIBLE FOR THE PROTECTION OF ALL EXISTING WORK AND MATERIALS.
8. THE CONTRACTOR SHALL BE RESPONSIBLE FOR THE PROTECTION OF ALL EXISTING WORK AND MATERIALS.
9. THE CONTRACTOR SHALL BE RESPONSIBLE FOR THE PROTECTION OF ALL EXISTING WORK AND MATERIALS.
10. THE CONTRACTOR SHALL BE RESPONSIBLE FOR THE PROTECTION OF ALL EXISTING WORK AND MATERIALS.

FOR MANAGING ENGINEER USE ONLY

PROJECT NO. 905D-017

DATE: 10/15/54

BY: [Signature]

APPROVED: [Signature]

FOR MANAGING ENGINEER USE ONLY

PROJECT NO. 905D-017

DATE: 10/15/54

BY: [Signature]

APPROVED: [Signature]

905D-017 2

A B C D

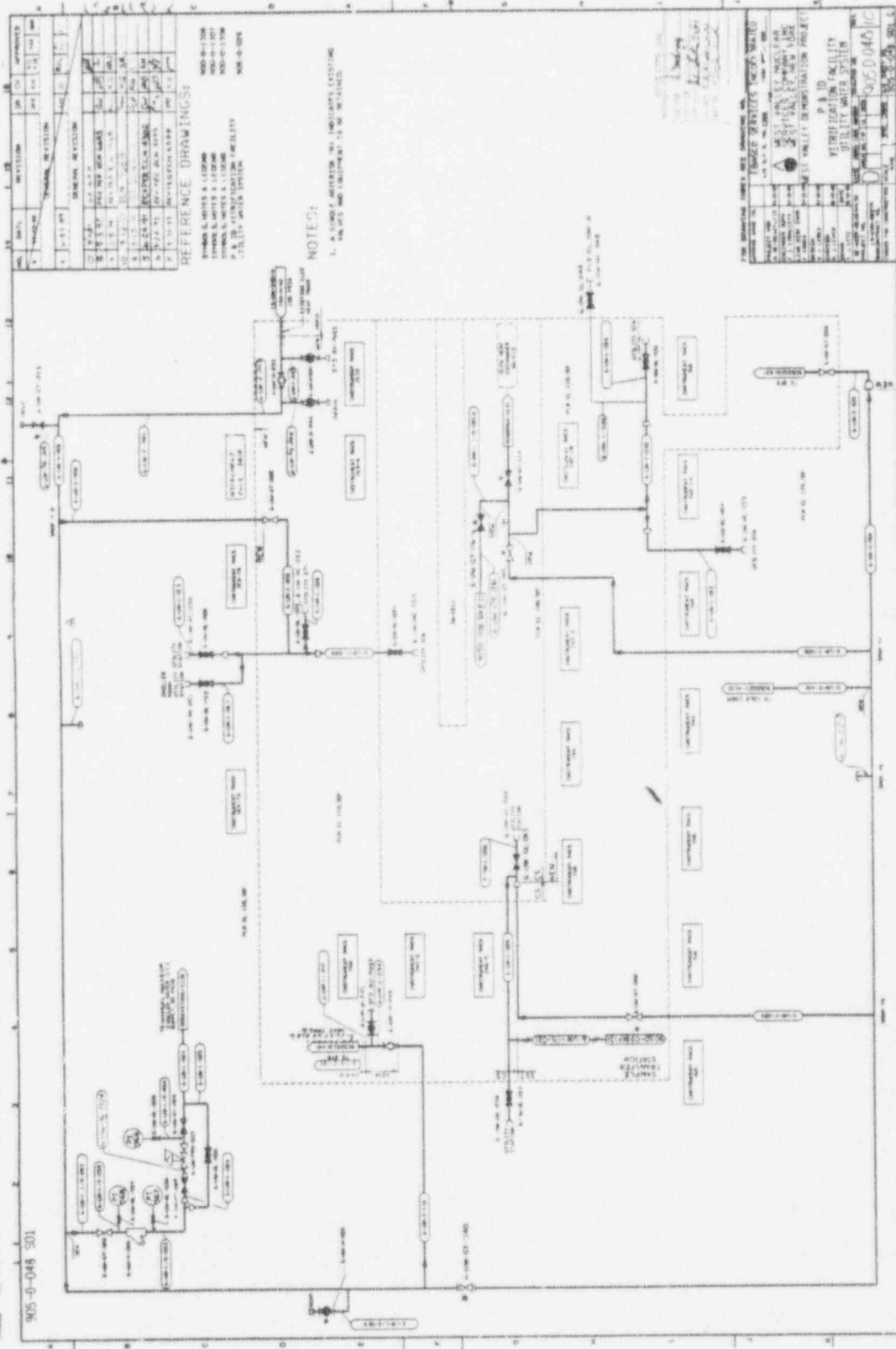
1 2 3 4 5 6 7 8 9 10 11 12 13 14 15 16 17 18 19 20 21 22 23 24 25 26 27 28 29 30 31 32 33 34 35 36 37 38 39 40 41 42 43 44 45 46 47 48 49 50 51 52 53 54 55 56 57 58 59 60 61 62 63 64 65 66 67 68 69 70 71 72 73 74 75 76 77 78 79 80 81 82 83 84 85 86 87 88 89 90 91 92 93 94 95 96 97 98 99 100

905D-04B 501

905D-04B

905D-04B

905D-04B



NO.	DATE	BY	CHK'D	APPROVED
1	12/1/58	J. H. [unclear]	[unclear]	[unclear]
2	12/1/58	J. H. [unclear]	[unclear]	[unclear]
3	12/1/58	J. H. [unclear]	[unclear]	[unclear]
4	12/1/58	J. H. [unclear]	[unclear]	[unclear]
5	12/1/58	J. H. [unclear]	[unclear]	[unclear]
6	12/1/58	J. H. [unclear]	[unclear]	[unclear]
7	12/1/58	J. H. [unclear]	[unclear]	[unclear]
8	12/1/58	J. H. [unclear]	[unclear]	[unclear]
9	12/1/58	J. H. [unclear]	[unclear]	[unclear]
10	12/1/58	J. H. [unclear]	[unclear]	[unclear]
11	12/1/58	J. H. [unclear]	[unclear]	[unclear]
12	12/1/58	J. H. [unclear]	[unclear]	[unclear]
13	12/1/58	J. H. [unclear]	[unclear]	[unclear]
14	12/1/58	J. H. [unclear]	[unclear]	[unclear]
15	12/1/58	J. H. [unclear]	[unclear]	[unclear]
16	12/1/58	J. H. [unclear]	[unclear]	[unclear]
17	12/1/58	J. H. [unclear]	[unclear]	[unclear]
18	12/1/58	J. H. [unclear]	[unclear]	[unclear]
19	12/1/58	J. H. [unclear]	[unclear]	[unclear]
20	12/1/58	J. H. [unclear]	[unclear]	[unclear]
21	12/1/58	J. H. [unclear]	[unclear]	[unclear]
22	12/1/58	J. H. [unclear]	[unclear]	[unclear]
23	12/1/58	J. H. [unclear]	[unclear]	[unclear]
24	12/1/58	J. H. [unclear]	[unclear]	[unclear]
25	12/1/58	J. H. [unclear]	[unclear]	[unclear]

REFERENCE DRAWINGS

905D-04B
905D-04A
905D-04C
905D-04D
905D-04E
905D-04F
905D-04G
905D-04H
905D-04I
905D-04J
905D-04K
905D-04L
905D-04M
905D-04N
905D-04O
905D-04P
905D-04Q
905D-04R
905D-04S
905D-04T
905D-04U
905D-04V
905D-04W
905D-04X
905D-04Y
905D-04Z

NOTES

1. ALL DIMENSIONS IN INCHES UNLESS NOTED OTHERWISE.

2. ALL DIMENSIONS TO BE MAINTAINED AS SHOWN.

PROJECT: 905D-04B 501

DATE: 12/1/58

BY: J. H. [unclear]

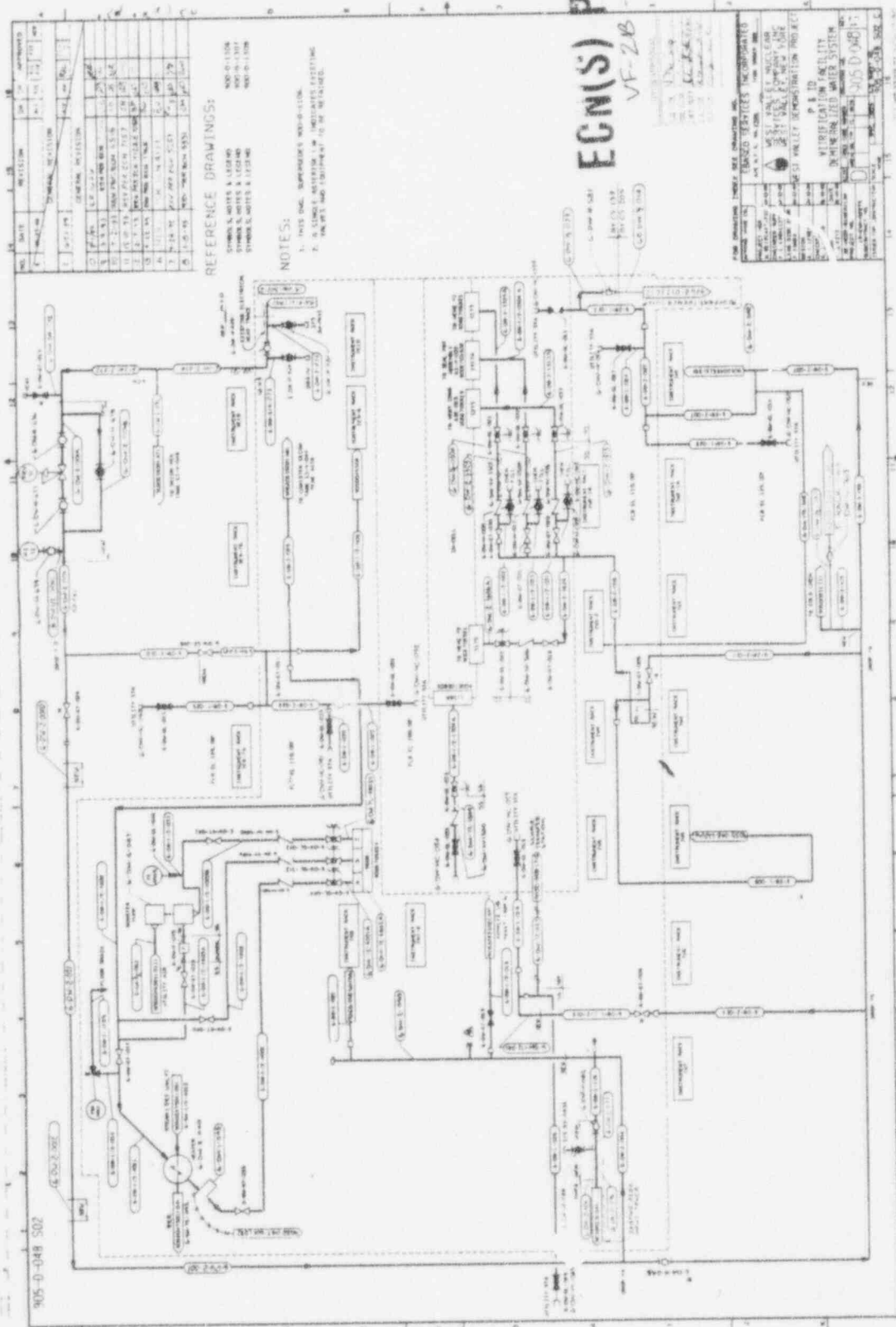
CHK'D: [unclear]

APPROVED: [unclear]

REVISIONS:

NO.	DATE	BY	CHK'D	APPROVED
1	12/1/58	J. H. [unclear]	[unclear]	[unclear]
2	12/1/58	J. H. [unclear]	[unclear]	[unclear]
3	12/1/58	J. H. [unclear]	[unclear]	[unclear]
4	12/1/58	J. H. [unclear]	[unclear]	[unclear]
5	12/1/58	J. H. [unclear]	[unclear]	[unclear]
6	12/1/58	J. H. [unclear]	[unclear]	[unclear]
7	12/1/58	J. H. [unclear]	[unclear]	[unclear]
8	12/1/58	J. H. [unclear]	[unclear]	[unclear]
9	12/1/58	J. H. [unclear]	[unclear]	[unclear]
10	12/1/58	J. H. [unclear]	[unclear]	[unclear]
11	12/1/58	J. H. [unclear]	[unclear]	[unclear]
12	12/1/58	J. H. [unclear]	[unclear]	[unclear]
13	12/1/58	J. H. [unclear]	[unclear]	[unclear]
14	12/1/58	J. H. [unclear]	[unclear]	[unclear]
15	12/1/58	J. H. [unclear]	[unclear]	[unclear]
16	12/1/58	J. H. [unclear]	[unclear]	[unclear]
17	12/1/58	J. H. [unclear]	[unclear]	[unclear]
18	12/1/58	J. H. [unclear]	[unclear]	[unclear]
19	12/1/58	J. H. [unclear]	[unclear]	[unclear]
20	12/1/58	J. H. [unclear]	[unclear]	[unclear]
21	12/1/58	J. H. [unclear]	[unclear]	[unclear]
22	12/1/58	J. H. [unclear]	[unclear]	[unclear]
23	12/1/58	J. H. [unclear]	[unclear]	[unclear]
24	12/1/58	J. H. [unclear]	[unclear]	[unclear]
25	12/1/58	J. H. [unclear]	[unclear]	[unclear]

905D-04B SH 2



NO.	DATE	REVISION	BY	APP'D
1	10/27/00	DESIGN REVISION		
2	11/14/00	DESIGN REVISION		
3	11/14/00	DESIGN REVISION		
4	11/14/00	DESIGN REVISION		
5	11/14/00	DESIGN REVISION		
6	11/14/00	DESIGN REVISION		
7	11/14/00	DESIGN REVISION		
8	11/14/00	DESIGN REVISION		
9	11/14/00	DESIGN REVISION		
10	11/14/00	DESIGN REVISION		
11	11/14/00	DESIGN REVISION		
12	11/14/00	DESIGN REVISION		
13	11/14/00	DESIGN REVISION		
14	11/14/00	DESIGN REVISION		
15	11/14/00	DESIGN REVISION		
16	11/14/00	DESIGN REVISION		
17	11/14/00	DESIGN REVISION		
18	11/14/00	DESIGN REVISION		
19	11/14/00	DESIGN REVISION		
20	11/14/00	DESIGN REVISION		

REFERENCE DRAWINGS:

- 905D-04A
- 905D-04B
- 905D-04C
- 905D-04D
- 905D-04E
- 905D-04F
- 905D-04G
- 905D-04H
- 905D-04I
- 905D-04J
- 905D-04K
- 905D-04L
- 905D-04M
- 905D-04N
- 905D-04O
- 905D-04P
- 905D-04Q
- 905D-04R
- 905D-04S
- 905D-04T
- 905D-04U
- 905D-04V
- 905D-04W
- 905D-04X
- 905D-04Y
- 905D-04Z

NOTES:

- 1. THIS DRAWING IS A PART OF THE PROJECT.
- 2. ALL DIMENSIONS ARE IN FEET AND INCHES.
- 3. ALL MATERIALS SHALL BE AS SHOWN UNLESS OTHERWISE NOTED.
- 4. ALL WORK SHALL BE IN ACCORDANCE WITH THE CITY OF DENVER WATER DEPARTMENT SPECIFICATIONS.
- 5. ALL WORK SHALL BE IN ACCORDANCE WITH THE CITY OF DENVER WATER DEPARTMENT STANDARD DRAWINGS.
- 6. ALL WORK SHALL BE IN ACCORDANCE WITH THE CITY OF DENVER WATER DEPARTMENT STANDARD SPECIFICATIONS.
- 7. ALL WORK SHALL BE IN ACCORDANCE WITH THE CITY OF DENVER WATER DEPARTMENT STANDARD CONTRACT DOCUMENTS.
- 8. ALL WORK SHALL BE IN ACCORDANCE WITH THE CITY OF DENVER WATER DEPARTMENT STANDARD REGULATIONS.
- 9. ALL WORK SHALL BE IN ACCORDANCE WITH THE CITY OF DENVER WATER DEPARTMENT STANDARD ORDINANCES.
- 10. ALL WORK SHALL BE IN ACCORDANCE WITH THE CITY OF DENVER WATER DEPARTMENT STANDARD POLICIES.
- 11. ALL WORK SHALL BE IN ACCORDANCE WITH THE CITY OF DENVER WATER DEPARTMENT STANDARD PROCEDURES.
- 12. ALL WORK SHALL BE IN ACCORDANCE WITH THE CITY OF DENVER WATER DEPARTMENT STANDARD PRACTICES.
- 13. ALL WORK SHALL BE IN ACCORDANCE WITH THE CITY OF DENVER WATER DEPARTMENT STANDARD METHODS.
- 14. ALL WORK SHALL BE IN ACCORDANCE WITH THE CITY OF DENVER WATER DEPARTMENT STANDARD TOOLS.
- 15. ALL WORK SHALL BE IN ACCORDANCE WITH THE CITY OF DENVER WATER DEPARTMENT STANDARD EQUIPMENT.
- 16. ALL WORK SHALL BE IN ACCORDANCE WITH THE CITY OF DENVER WATER DEPARTMENT STANDARD SUPPLIES.
- 17. ALL WORK SHALL BE IN ACCORDANCE WITH THE CITY OF DENVER WATER DEPARTMENT STANDARD SERVICES.
- 18. ALL WORK SHALL BE IN ACCORDANCE WITH THE CITY OF DENVER WATER DEPARTMENT STANDARD CONTRACTORS.
- 19. ALL WORK SHALL BE IN ACCORDANCE WITH THE CITY OF DENVER WATER DEPARTMENT STANDARD SUBCONTRACTORS.
- 20. ALL WORK SHALL BE IN ACCORDANCE WITH THE CITY OF DENVER WATER DEPARTMENT STANDARD VENDORS.

ECN(S) PENDING
VF-ZB-2227

DESIGNED BY: [Name]
CHECKED BY: [Name]
DATE: [Date]

ENGINEER: [Name]
DATE: [Date]

PROJECT: [Name]
LOCATION: [Name]

SCALE: [Name]

PROJECT NO.: [Name]

DATE: [Name]

BY: [Name]

APP'D: [Name]

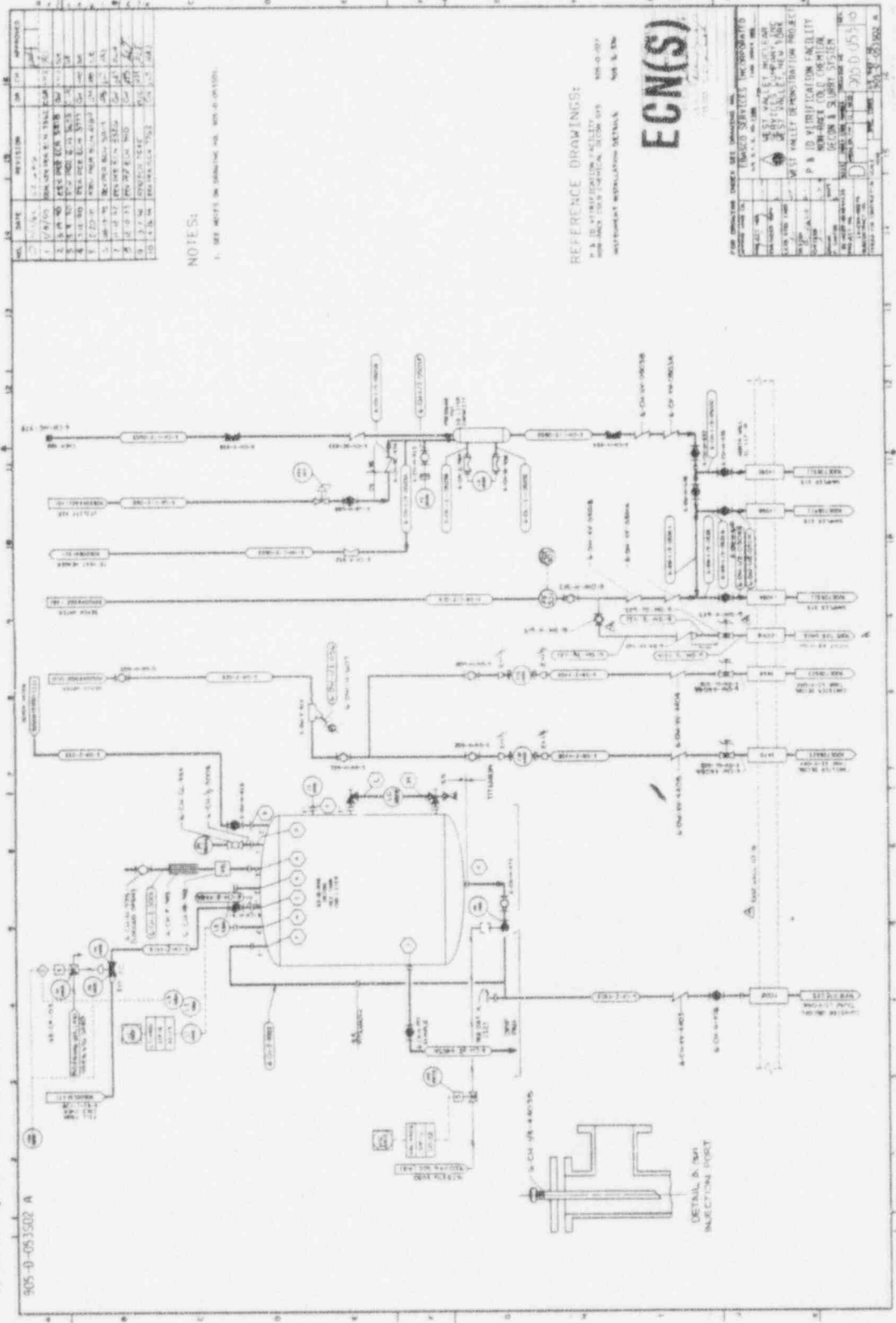
905D-04B

A B C D
1 2 3 4 5 6 7 8 9 10 11 12 13 14 15 16 17 18 19 20

905 D-053 58 2

905 D-05302 A

905 D-05302 A



NO.	DATE	REVISION	BY	CHKD.	APPROVED
1	10/1/70	ISSUE FOR CONSTRUCTION
2	10/1/70	REVISED FOR CONSTRUCTION
3	10/1/70	REVISED FOR CONSTRUCTION
4	10/1/70	REVISED FOR CONSTRUCTION
5	10/1/70	REVISED FOR CONSTRUCTION
6	10/1/70	REVISED FOR CONSTRUCTION
7	10/1/70	REVISED FOR CONSTRUCTION
8	10/1/70	REVISED FOR CONSTRUCTION
9	10/1/70	REVISED FOR CONSTRUCTION
10	10/1/70	REVISED FOR CONSTRUCTION

NOTE S1:
 1. SEE NOTES ON DRAWING NO. 905 D-05301.

REFERENCE DRAWINGS:
 P & ID WATER TREATMENT FACILITY
 905 D-05301, 905 D-05302, 905 D-05303
 WATER TREATMENT FACILITY
 905 D-05301, 905 D-05302, 905 D-05303

ECN(S) PENDING
 7214

NO.	DATE	REVISION	BY	CHKD.	APPROVED
1	10/1/70	ISSUE FOR CONSTRUCTION
2	10/1/70	REVISED FOR CONSTRUCTION
3	10/1/70	REVISED FOR CONSTRUCTION
4	10/1/70	REVISED FOR CONSTRUCTION
5	10/1/70	REVISED FOR CONSTRUCTION
6	10/1/70	REVISED FOR CONSTRUCTION
7	10/1/70	REVISED FOR CONSTRUCTION
8	10/1/70	REVISED FOR CONSTRUCTION
9	10/1/70	REVISED FOR CONSTRUCTION
10	10/1/70	REVISED FOR CONSTRUCTION

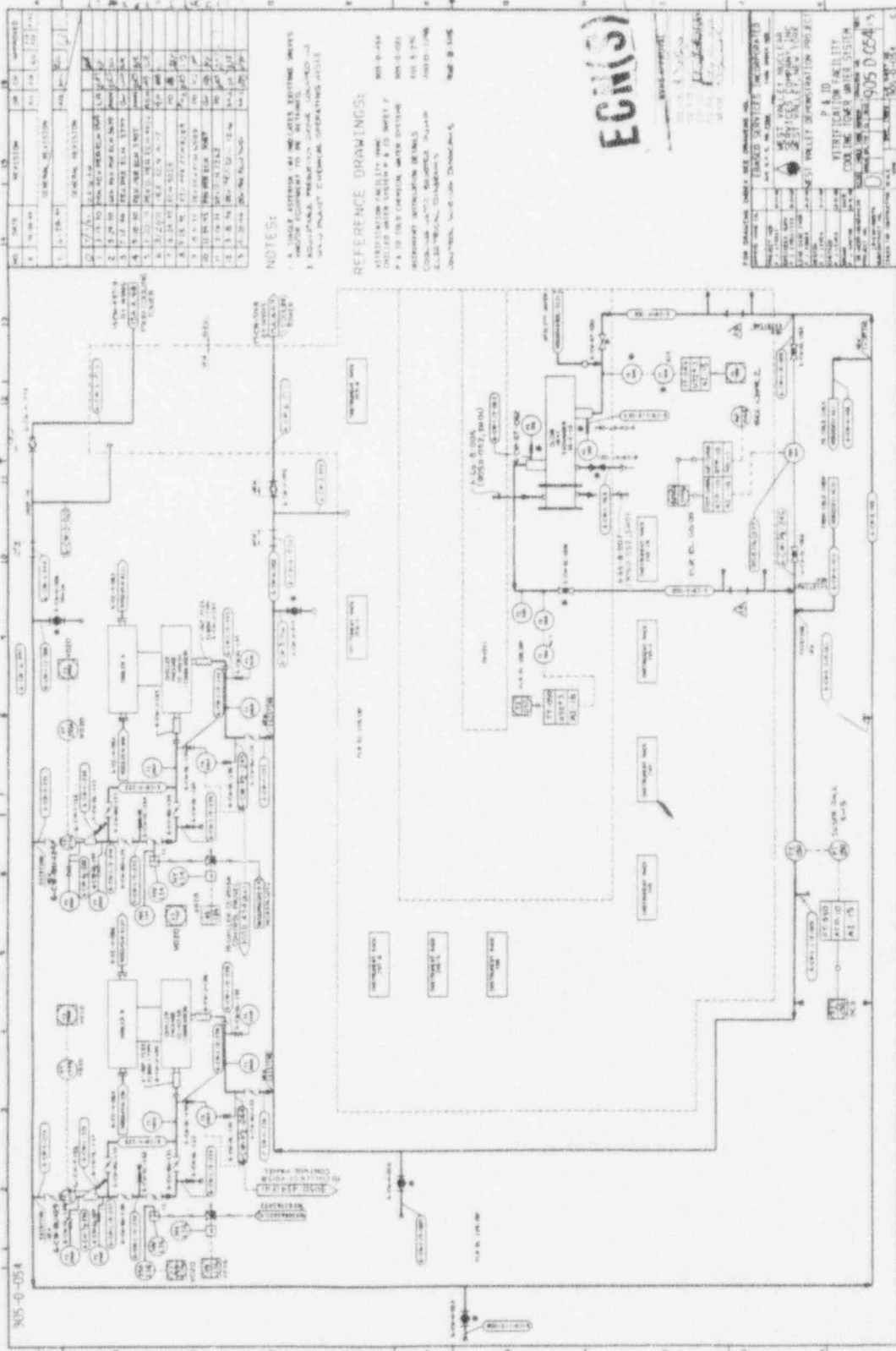
A B C D
 1 2 3 4 5 6 7 8 9 10 11 12

905 D-054

905 D-054

905 D-054

905 D-054



NO.	DATE	REVISION	BY	CHK.	APPROVED
1	10-10-54	ISSUED FOR CONSTRUCTION	J. W. BROWN	J. W. BROWN	J. W. BROWN
2	11-15-54	REVISION	J. W. BROWN	J. W. BROWN	J. W. BROWN
3	12-15-54	REVISION	J. W. BROWN	J. W. BROWN	J. W. BROWN
4	1-15-55	REVISION	J. W. BROWN	J. W. BROWN	J. W. BROWN
5	2-15-55	REVISION	J. W. BROWN	J. W. BROWN	J. W. BROWN
6	3-15-55	REVISION	J. W. BROWN	J. W. BROWN	J. W. BROWN
7	4-15-55	REVISION	J. W. BROWN	J. W. BROWN	J. W. BROWN
8	5-15-55	REVISION	J. W. BROWN	J. W. BROWN	J. W. BROWN
9	6-15-55	REVISION	J. W. BROWN	J. W. BROWN	J. W. BROWN
10	7-15-55	REVISION	J. W. BROWN	J. W. BROWN	J. W. BROWN
11	8-15-55	REVISION	J. W. BROWN	J. W. BROWN	J. W. BROWN
12	9-15-55	REVISION	J. W. BROWN	J. W. BROWN	J. W. BROWN
13	10-15-55	REVISION	J. W. BROWN	J. W. BROWN	J. W. BROWN
14	11-15-55	REVISION	J. W. BROWN	J. W. BROWN	J. W. BROWN
15	12-15-55	REVISION	J. W. BROWN	J. W. BROWN	J. W. BROWN

NOTES:

- 1. ALL SYSTEMS TO BE INSTALLED IN ACCORDANCE WITH THE SPECIFICATIONS AND DRAWINGS.
- 2. MATERIALS TO BE USED SHALL BE OF THE BEST QUALITY AVAILABLE.
- 3. ALL WORK SHALL BE DONE IN ACCORDANCE WITH THE CURRENT EDITIONS OF THE NATIONAL ELECTRICAL CODE AND THE NATIONAL MECHANICAL CODE.

REFERENCE DRAWINGS:

- MECHANICAL DRAWING NO. 905 D-054
- ELECTRICAL DRAWING NO. 905 D-054
- PLUMBING DRAWING NO. 905 D-054
- MECHANICAL DRAWING NO. 905 D-054
- ELECTRICAL DRAWING NO. 905 D-054
- PLUMBING DRAWING NO. 905 D-054

ECN(S) PENDING
7/10

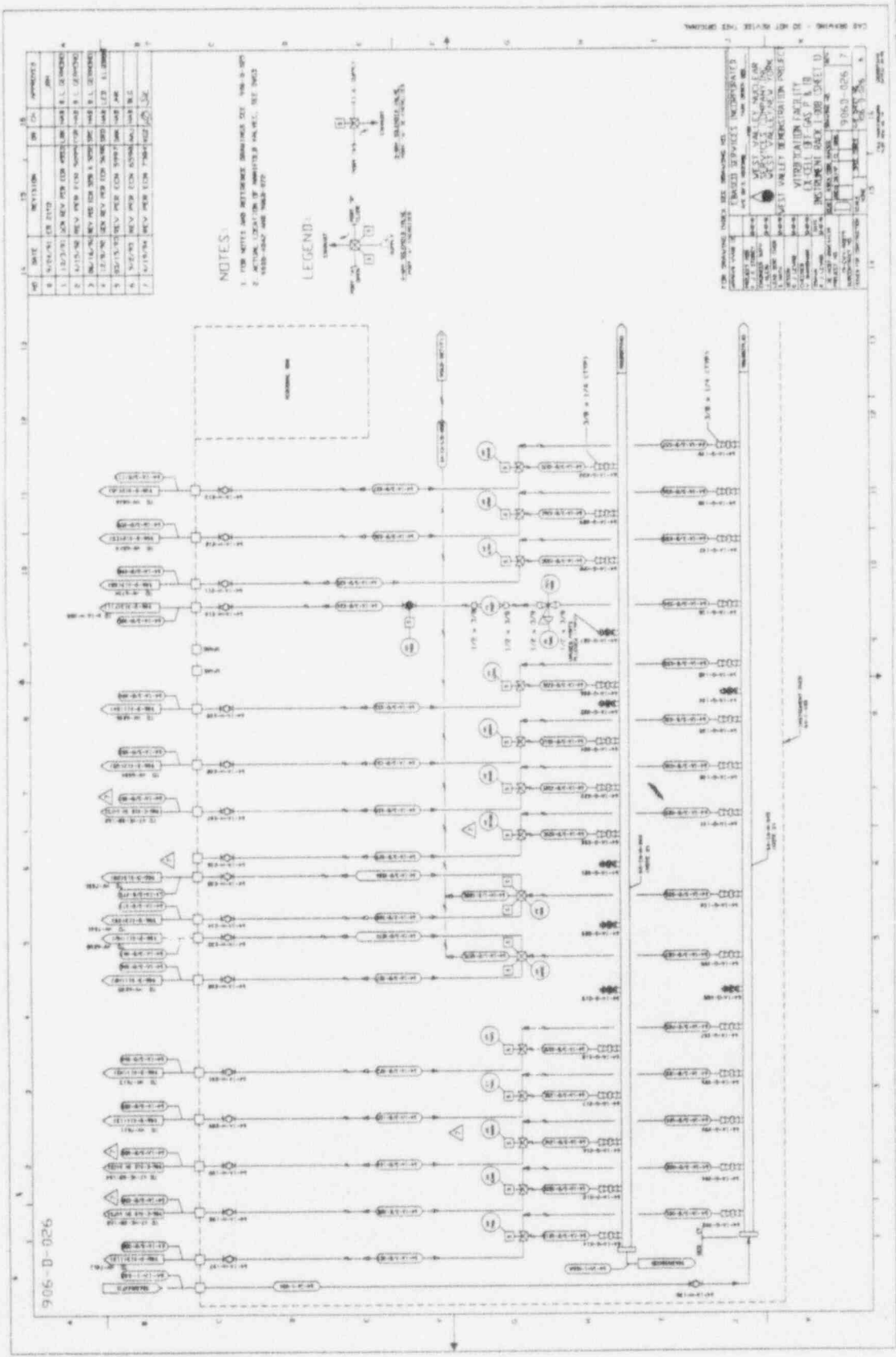
FOR DRAWING ONLY, SEE COMMENTS AND REVISIONS FOR DETAILS.

DESIGNED BY: J. W. BROWN
CHECKED BY: J. W. BROWN
DATE: 10-10-54

PROJECT: VENTILATION FACILITY FOR THE POWER PLANT

SCALE: AS SHOWN

905 D-054



NOTES:

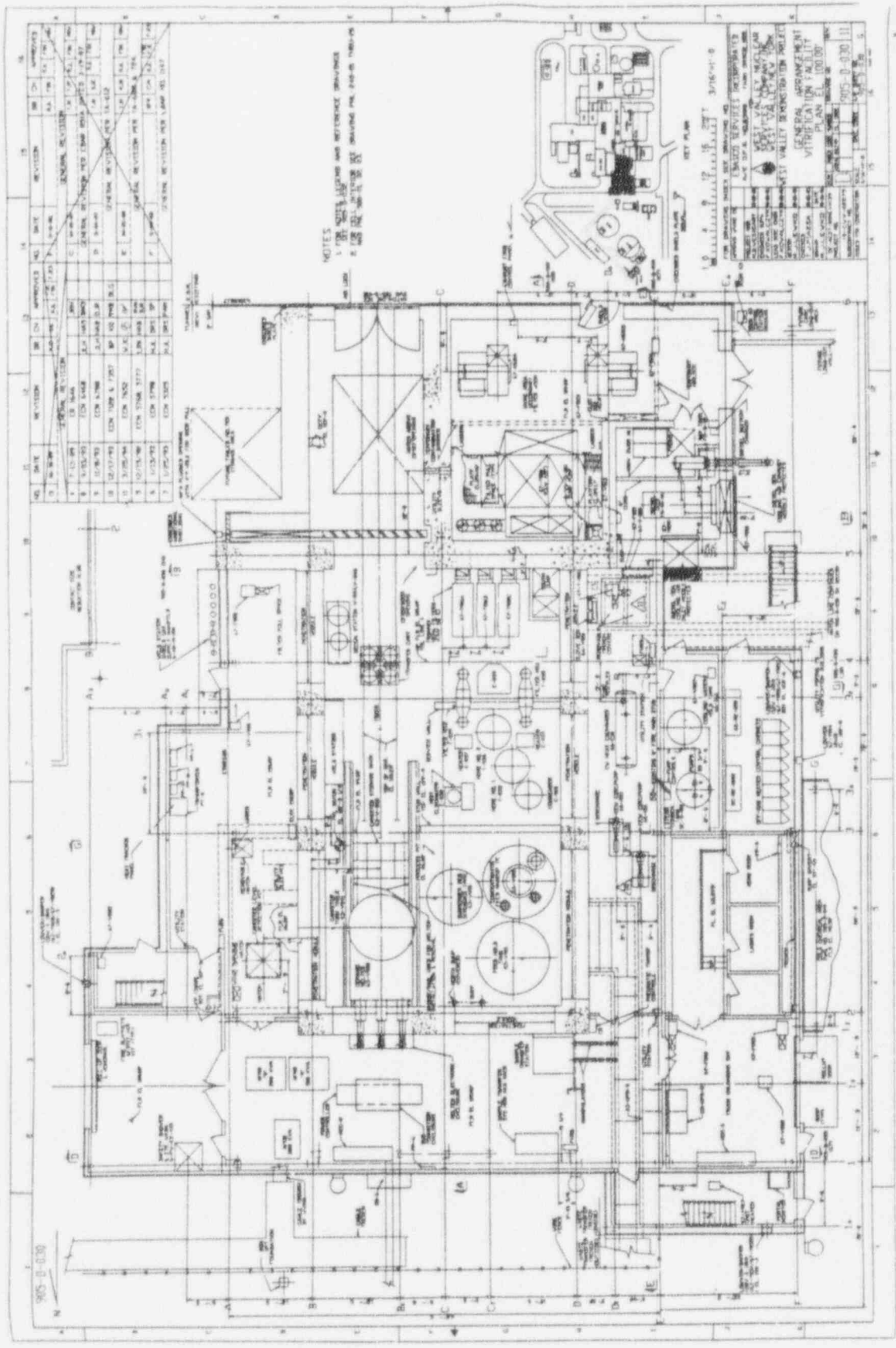
- FOR NOTICES AND REFERENCE DRAWINGS SEE 906-D-007
- ACTUAL LOCATION OF COMPONENTS INDICATED BY DIMENSIONS AND SYMBOLS



WEST VALLEY NUCLEAR GENERATING STATION
 SHEET 906-D-026
 INSTRUMENT BACK LOG SHEET D

NO.	DATE	REVISION	BY	CHK.	APPROVED
1	10/27/70	FOR REV FOR APPROVAL
2	11/15/70	REV FOR ECON. STUDY
3	12/15/70	REV FOR ECON. STUDY
4	1/15/71	REV FOR ECON. STUDY
5	2/15/71	REV FOR ECON. STUDY
6	3/15/71	REV FOR ECON. STUDY
7	4/15/71	REV FOR ECON. STUDY

906-D-026



NO.	DATE	REVISION	BY	IN	APPROVED	DATE
1	7-10-58	GEN. REV.	J.M.	J.M.	J.M.	7-10-58
2	7-15-58	COND. REV.	J.M.	J.M.	J.M.	7-15-58
3	7-20-58	COND. REV.	J.M.	J.M.	J.M.	7-20-58
4	7-25-58	COND. REV.	J.M.	J.M.	J.M.	7-25-58
5	7-30-58	COND. REV.	J.M.	J.M.	J.M.	7-30-58
6	8-5-58	COND. REV.	J.M.	J.M.	J.M.	8-5-58
7	8-10-58	COND. REV.	J.M.	J.M.	J.M.	8-10-58
8	8-15-58	COND. REV.	J.M.	J.M.	J.M.	8-15-58
9	8-20-58	COND. REV.	J.M.	J.M.	J.M.	8-20-58
10	8-25-58	COND. REV.	J.M.	J.M.	J.M.	8-25-58
11	8-30-58	COND. REV.	J.M.	J.M.	J.M.	8-30-58

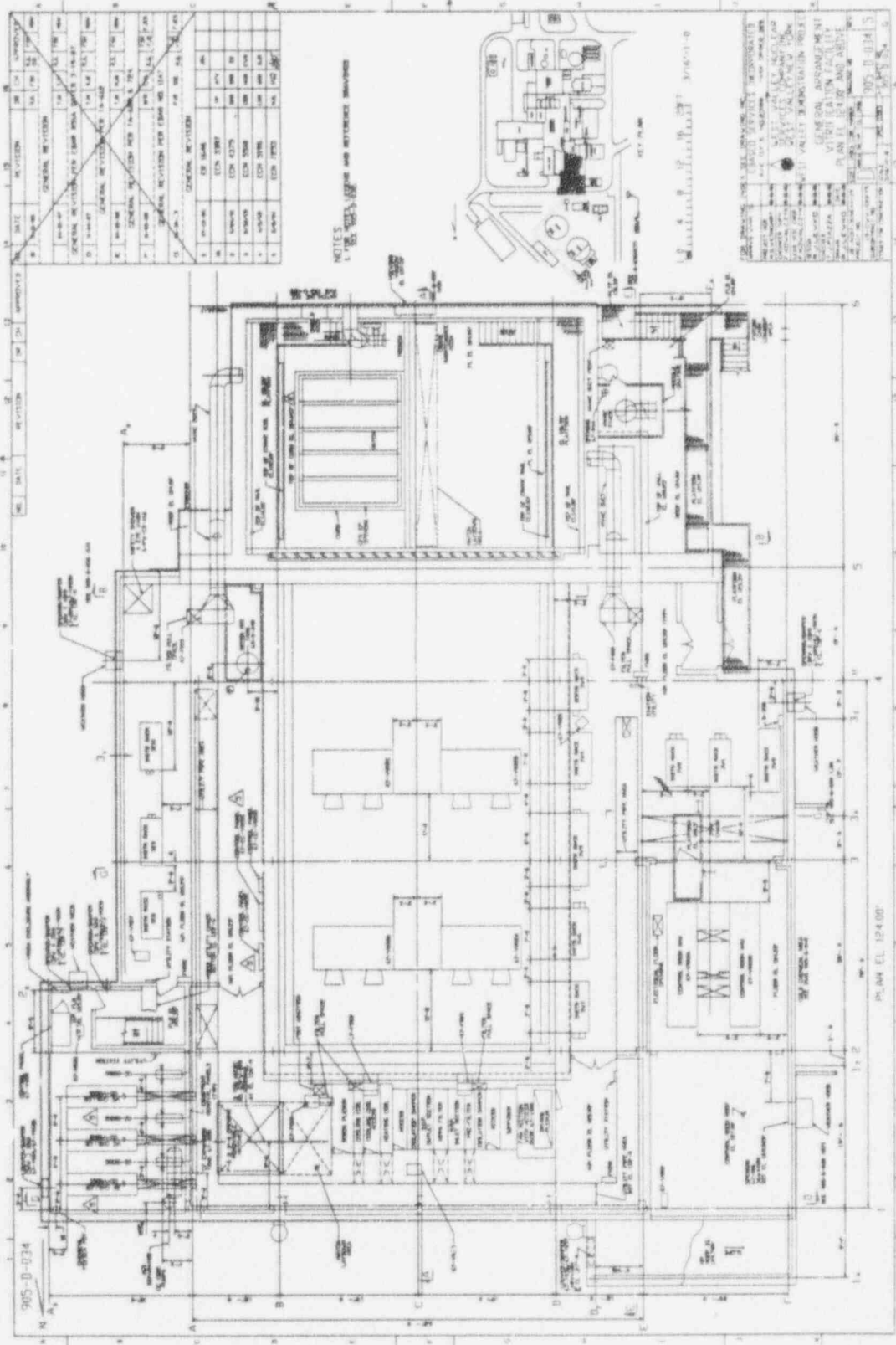
NOTES
 1. SEE MECHANICAL AND ELECTRICAL DRAWINGS FOR
 2. SEE MECHANICAL AND ELECTRICAL DRAWINGS FOR

WEST VALLEY MALL
 MECHANICAL FLOOR PLAN
 SCALE: 1/8" = 1'-0"

MECHANICAL FLOOR PLAN
 SCALE: 1/8" = 1'-0"

MECHANICAL FLOOR PLAN
 SCALE: 1/8" = 1'-0"

A B C D
 1 2 3 4 5 6 7 8 9 10 11

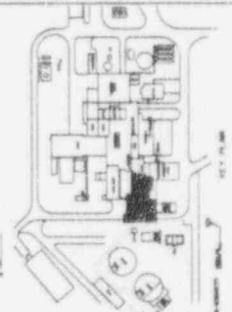


905-D-0734

NO.	DATE	REVISION	BY	APPROVED
1				
2				
3				
4				
5				
6				
7				
8				
9				
10				
11				
12				
13				
14				
15				

NO.	DATE	REVISION	BY	APPROVED
1				
2				
3				
4				
5				
6				
7				
8				
9				
10				
11				
12				
13				
14				
15				

NOTES
 1. SEE SHEETS FOR AND REFERENCE DRAWINGS



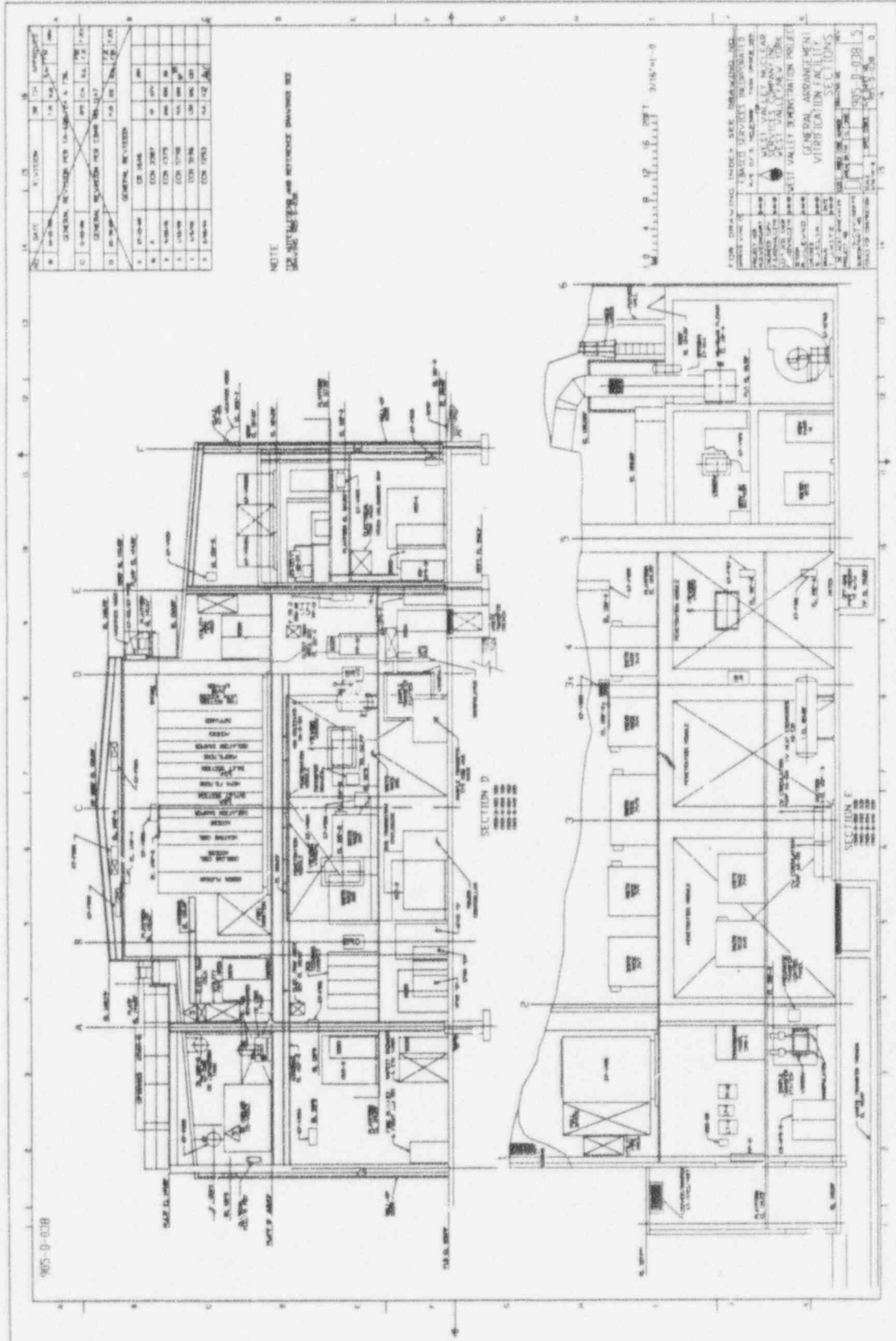
STATION FACILITY
 905-D-0734

GENERAL ASSUMPTIONS
 1. ALL DIMENSIONS ARE IN FEET AND INCHES.
 2. ALL FINISHES ARE AS SHOWN ON THE DRAWINGS.
 3. ALL MATERIALS ARE TO BE OF THE BEST QUALITY AVAILABLE.
 4. ALL WORK IS TO BE DONE IN ACCORDANCE WITH THE LATEST EDITIONS OF THE BUILDING CODES AND SPECIFICATIONS.
 5. ALL UTILITIES ARE TO BE LOCATED AND DEPTH AS SHOWN ON THE DRAWINGS.
 6. ALL STRUCTURES ARE TO BE CONSTRUCTED OF CONCRETE AND STEEL.
 7. ALL ROOFING IS TO BE AS SHOWN ON THE DRAWINGS.
 8. ALL MECHANICAL AND ELECTRICAL SYSTEMS ARE TO BE AS SHOWN ON THE DRAWINGS.
 9. ALL PAINTS AND COATINGS ARE TO BE AS SHOWN ON THE DRAWINGS.
 10. ALL WORK IS TO BE COMPLETED WITHIN THE SPECIFIED TIME FRAME.

1 2 3 4 5 6 7 8 9 10 11 12 13

A B C D

PLAN EL. 124.00'



NO.	DATE	REVISION	BY	CHK.	APP.
1	10-1-58	AS SHOWN	J. H.
2	10-1-58
3	10-1-58
4	10-1-58
5	10-1-58
6	10-1-58
7	10-1-58
8	10-1-58
9	10-1-58
10	10-1-58

NOTE
SEE REFERENCE DRAWINGS FOR
GENERAL NOTES

FOR DRAWING INDEX - SEE DRAWING INDEX
PROJECT NO. 1005-B-038
DATE OF ISSUE 10-1-58
DRAWN BY J. H. ...
CHECKED BY ...
APPROVED BY ...
WEST VALLEY WASTEWATER TREATMENT PLANT
VENTILATION FACILITY
SECTION C

1005-B-038
SECTION C
SECTION D

Section 1.3.1 Vitrification Facility

905-D-030 Sht:001 Rev:011 Title: General arrangement vitrification facility plan EL 100'

905-D-030 Sht:002 Rev:000 Title: VF GENERAL ARRANGEMENT FUEL OIL STORAGE

905-D-032 Sht:001 Rev:007 Title: General arrangement vitrification facility plan EL
110.25'

905-D-032 Sht:002 Rev:002 Title: VF CONTROL ROOM GENERAL ARRANGEMENT

905-D-034 Sht:001 Rev:005 Title: General arrangement vitrification facility plan EL 124' &
above

905-D-038 Sht:001 Rev:005 Title: General arrangement vitrification facility sections

905-D-040 Sht:001 Rev:002 Title: General arrangement vitrification facility plan EL
146.25' & roof

Section 1.3.2 Tank Farm

900-D-2860 Sht:001 Rev:001 Title: SMS Utilities to pump/dist. pits general arrangement

904-D-060 Sht:001 Rev:006 Title: SMS HLW transfer piping

904-D-060 Sht:002 Rev:005 Title: SMS HLW transfer piping

904-D-060 Sht:003 Rev:005 Title: SMS HLW transfer piping

904-D-060 Sht:004 Rev:006 Title: SMS HLW transfer piping

904-D-060 Sht:005 Rev:011 Title: SMS HLW transfer piping

Section 1.3.3 High Level Waste Storage

905-D-031 Sht:001 Rev:001 Title: General arrangement vitrification facility EDR, CPC plan
EL 100'

905-D-033 Sht:001 Rev:001 Title: General arrangement vitrification facility EDR CPC plan
EL 117'

Section 1.3.4 Ex-cell Off-gas 0-14 Building

906-D-030	Sht:001	Rev:007	Title: VF MELTER OFF-GAS GENERAL ARRANGEMENTS 01/14 BUILDING 98'
-----------	---------	---------	--

906-D-030	Sht:002	Rev:001	Title: VF GENERAL ARRANGEMENT NOx TRENCH
-----------	---------	---------	--

906-D-030	Sht:003	Rev:003	Title: VF GENERAL ARRANGEMENTS 01/14 BUILDING PLAN EL 98'
-----------	---------	---------	---

906-D-031	Sht:001	Rev:005	Title: VF MELTER OFF-GAS GENERAL ARRANGEMENTS 01/14 BUILDING 116.59'
-----------	---------	---------	---

906-D-032	Sht:001	Rev:005	Title: VF MELTER OFF-GAS GENERAL ARRANGEMENTS 01/14 BUILDING 130'
-----------	---------	---------	--

906-D-033	Sht:001	Rev:005	Title: VF MELTER OFF-GAS GENERAL ARRANGEMENTS 01/14 BUILDING 144'
-----------	---------	---------	--

906-D-034	Sht:001	Rev:005	Title: VF MELTER OFF-GAS GENERAL ARRANGEMENTS 01/14 BUILDING SECTION
-----------	---------	---------	---

906-D-035	Sht:001	Rev:006	Title: VF MELTER OFF-GAS GENERAL ARRANGEMENTS 01/14 BUILDING SECTION
-----------	---------	---------	---

906-D-036	Sht:001	Rev:003	Title: VF MELTER OFF-GAS GENERAL ARRANGEMENTS 01/14 BUILDING PLAN EL 158' ROOF PLAN
-----------	---------	---------	--

906-D-037	Sht:001	Rev:006	Title: VF MELTER OFF-GAS GENERAL ARRANGEMENTS 01/14 BUILDING PLAN EL 124'
-----------	---------	---------	--

906-D-038	Sht:001	Rev:006	Title: VF MELTER OFF-GAS GENERAL ARRANGEMENTS 01/14 BUILDING SECTION
-----------	---------	---------	---

SYSTEM DESCRIPTION

WVNS-SD-65

COLD CHEMICAL SYSTEM

SYSTEM 65