

**GEORGIA POWER COMPANY
INSERVICE TEST PROGRAM**

(ISI-P-016)

FOR

**VOGTLE ELECTRIC GENERATING PLANT
UNIT 2**

PREPARED BY
SOUTHERN NUCLEAR OPERATING COMPANY
INSPECTION AND TESTING SERVICES GROUP

REV	DATE	DESCRIPTION	SNC				GPC	
			PREP'D BY (ITS)	REV'D BY (ITS)	APPV. BY (ITS)	APPV. VOGTLE PROJECT NMS	APPV MGR. TECH SUPP	APPR GEN. MGR.
0	3/02/88	ISSUED FOR PST/IST						
1	8/25/88	INCORPORATE RR-27 & CS -39						
2	2/15/90	REFER TO REVISION 2 SUMMARY OF CHANGES						
3	2/28/91	REFER TO REVISION 3 SUMMARY OF CHANGES						
4	3/22/93	REFER TO REVISION 4 SUMMARY OF CHANGES						
5	3/30/94	INCORPORATE PCR'S 93-006 93-022 AND 93-024	<i>DRG</i>	<i>MSD</i>	<i>MB</i>	<i>DRG</i>	<i>MR</i>	<i>BB</i>
		ORIGINAL						

VOGTLE ELECTRIC GENERATING PLANT - UNIT 2
INSERVICE TEST (IST) PROGRAM

ISI-P-016

Revision 5 Summary of Changes

List of Effective Pages	Revised to indicate the current revision number of each page in the program document. See below for pages affected.
Drawings ISI-D-270 & ISI-D-271	Revised per PCR 93-022. (CVCS Section)
Page 12-32	Changed test frequency for valve HV8804B from quarterly to a Cold Shutdown Frequency per PCR 93-024.
Page 12-42	PSV8510A and PSV8510B deleted per PCR 93-022.
Pages 12-73 & 12-74	Revised to change Valve Numbers and Valve Types per PCR 93-006.
Page 14-41	Added cold Shutdown Justification CS-41 to justify testing HV8804B at Cold Shutdown Frequency.

List of Effective Pages

Distribution List, Rev. 5
 Table of Contents, Orig. Issue
 Introduction:

Page 1-1, Rev. 0
 Page 1-2, Rev. 2
 Page 1-3, Rev. 3

Pumps:

Page 2-1, Rev. 0
 Page 2-2, Rev. 0
 Page 2-3, Rev. 0
 Page 2-4, Rev. 0
 Page 2-5, Rev. 0
 Page 2-6, Rev. 0
 Page 2-7, Rev. 0
 Page 2-8, Rev. 0
 Page 2-9, Rev. 0
 Page 2-10, Rev. 0

Pump Relief Requests:

Page 3-1, Rev. 0
 Page 3-2, Rev. 0
 Page 3-3, Rev. 0
 Page 3-4, Rev. 2
 Page 3-5, Rev. 3

NSCW:

Page 4-1, Rev. 0
 Table 4-1, Rev. 2
 Table 4-2, Rev. 2
 Table 4-3, Rev. 0
 Table 4-4, Rev. 0
 Table 4-5, Rev. 0
 Table 4-6, Rev. 0
 Table 4-7, Rev. 0
 Table 4-8, Rev. 0
 Table 4-9, Rev. 2
 Table 4-10, Rev. 2

Drawings - ISI-D-250, Rev. 1
 Drawings - ISI-D-251, Rev. 1
 - ISI-D-252, Rev. 1
 - ISI-D-253, Rev. 1
 - ISI-D-254, Rev. 1
 - ISI-D-255, Rev. 1
 - ISI-D-256, Rev. 2
 - ISI-D-257, Rev. 2

Figures - 4-1, Rev. 0
 - 4-2, Rev. 0
 - 4-3, Rev. 0
 - 4-4, Rev. 0
 - 4-5, Rev. 0
 - 4-6, Rev. 0
 - 4-7, Rev. 0
 - 4-8, Rev. 0

CCW:

Page 5-1, Rev. 0
Table 5-1, Rev. 2
Table 5-2, Rev. 2
Table 5-3, Rev. 2
Table 5-4, Rev. 2
Table 5-5, Rev. 2
Table 5-6, Rev. 2
Table 5-7, Rev. 2
Drawings - ISI-D-258, Rev. 1
 - ISI-D-259, Rev. 1
 - ISI-D-260, Rev. 1
 - ISI-D-261, Rev. 1
 - ISI-D-262, Rev. 1
 - ISI-D-263, Rev. 1
Figures - 5-1, Rev. 0
 - 5-2, Rev. 0
 - 5-3, Rev. 0
 - 5-4, Rev. 0
 - 5-5, Rev. 0
 - 5-6, Rev. 0

SI:

Page 6-1, Rev. 0
Page 6-2, Rev. 0
Table 6-1, Rev. 2
Table 6-2, Rev. 0
Table 6-3, Rev. 0
Drawings - ISI-D-264, Rev. 1
 - ISI-D-265, Rev. 1
Figures - 6-1, Rev. 0
 - 6-2, Rev. 0

RHR:

Page 7-1, Rev. 0
Page 7-2, Rev. 0
Table 7-1, Rev. 2
Table 7-2, Rev. 2
Table 7-3, Rev. 3
Drawings - ISI-D-266, Rev. 2
 - ISI-D-267, Rev. 2
Figures - 7-1, Rev. 0
 - 7-2, Rev. 0

CS:

Page 8-1, Rev. 0
Table 8-1, Rev. 2
Table 8-2, Rev. 0
Table 8-3, Rev. 0
Drawings - ISI-D-268, Rev. 2
 - ISI-D-269, Rev. 2
Figures - 8-1, Rev. 0
 - 8-2, Rev. 0

CVCS:

Page 9-1, Rev. 0
Page 9-2, Rev. 0
Table 9-1, Rev. 2
Table 9-2, Rev. 2
Table 9-3, Rev. 2

CVCS: (continued)

Table 9-4, Rev. 2
Table 9-5, Rev. 0
Table 9-6, Rev. 0
Drawings - ISI-D-270, Rev. 3
 - ISI-D-271, Rev. 3
 - ISI-D-277, Rev. 1
 - ISI-D-278, Rev. 1
Figures - 9-1, Rev. 0
 - 9-2, Rev. 0
 - 9-3, Rev. 0
 - 9-4, Rev. 0

AFW:

Page 10-1, Rev. 0
Page 10-2, Rev. 0
Table 10-1, Rev. 2
Table 10-2, Rev. 2
Table 10-3, Rev. 2
Table 10-4, Rev. 2
Table 10-5, Rev. 2
Drawings - ISI-D-272, Rev. 1
 - ISI-D-273, Rev. 1
 - ISI-D-274, Rev. 1
Figures - 10-1, Rev. 0
 - 10-2, Rev. 0
 - 10-3, Rev. 0

ESF:

Page 11-1, Rev. 0
Table 11-1, Rev. 2
Table 11-2, Rev. 2
Table 11-3, Rev. 2
Drawings - ISI-D-275, Rev. 2
 - ISI-D-276, Rev. 2
Figures - 11-1, Rev. 0
 - 11-2, Rev. 0

Valves:

Page 12-1, Rev. 0
Page 12-2, Rev. 0
Page 12-3, Rev. 0
Page 12-4, Rev. 0
Page 12-5, Rev. 0
Page 12-6, Rev. 0
Page 12-7, Rev. 0
Page 12-8, Rev. 0
Page 12-9, Rev. 0
Page 12-10, Rev. 0
Page 12-11, Rev. 0
Page 12-12, Rev. 0
Page 12-13, Rev. 0
Page 12-14, Rev. 0
Page 12-15, Rev. 0
Page 12-16, Rev. 0
Page 12-17, Rev. 0
Page 12-18, Rev. 0
Page 12-19, Rev. 0
Page 12-20, Rev. 0
Page 12-21, Rev. 0

Valves: (continued)

Page 12-22, Rev. 0
Page 12-23, Rev. 0
Page 12-24, Rev. 0
Page 12-25, Rev. 0
Page 12-26, Rev. 0
Page 12-27, Rev. 0
Page 12-28, Rev. 0
Page 12-29, Rev. 0
Page 12-30, Rev. 0
Page 12-31, Rev. 1
Page 12-32, Rev. 5
Page 12-33, Rev. 0
Page 12-34, Rev. 0
Page 12-35, Rev. 0
Page 12-36, Rev. 0
Page 12-37, Rev. 3
Page 12-38, Rev. 0
Page 12-39, Rev. 0
Page 12-40, Rev. 0
Page 12-41, Rev. 0
Page 12-42, Rev. 5
Page 12-43, Rev. 4
Page 12-44, Rev. 0
Page 12-45, Rev. 0
Page 12-46, Rev. 4
Page 12-47, Rev. 0
Page 12-48, Rev. 0
Page 12-49, Rev. 0
Page 12-50, Rev. 0
Page 12-51, Rev. 0
Page 12-52, Rev. 0
Page 12-53, Rev. 0
Page 12-54, Rev. 0
Page 12-55, Rev. 0
Page 12-56, Rev. 0
Page 12-57, Rev. 0
Page 12-58, Rev. 0
Page 12-59, Rev. 3
Page 12-60, Rev. 4
Page 12-61, Rev. 0
Page 12-62, Rev. 0
Page 12-63, Rev. 0
Page 12-64, Rev. 0
Page 12-65, Rev. 0
Page 12-66, Rev. 0
Page 12-67, Rev. 0
Page 12-68, Rev. 0
Page 12-69, Rev. 3
Page 12-70, Rev. 3
Page 12-70a, Rev. 3
Page 12-71, Rev. 0
Page 12-72, Rev. 0
Page 12-73, Rev. 5
Page 12-74, Rev. 5
Page 12-75, Rev. 0
Page 12-76, Rev. 0

Valve : (continued)

Page 12-77, Rev. 0
Page 12-78, Rev. 0
Page 12-79, Rev. 0
Page 12-80, Rev. 0
Page 12-81, Rev. 0
Page 12-82, Rev. 0
Page 12-83, Rev. 0
Page 12-84, Rev. 0
Page 12-85, Rev. 0
Page 12-86, Rev. 3
Page 12-87, Rev. 0
Page 12-88, Rev. 0
Page 12-89, Rev. 0
Page 12-90, Rev. 0
Page 12-91, Rev. 0
Page 12-92, Rev. 0
Page 12-93, Rev. 0
Page 12-94, Rev. 1

Valve Relief Requests:

Page 13-1, Rev. 0
Page 13-2, Rev. 0
Page 13-3, Rev. 0
Page 13-4, Rev. 0
Page 13-5, Rev. 2
Page 13-6, Rev. 2
Page 13-7, Rev. 0
Page 13-8, Rev. 0
Page 13-9, Rev. 0
Page 13-10, Rev. 0
Page 13-11, Rev. 0
Page 13-12, Rev. 0
Page 13-13, Rev. 0
Page 13-14, Rev. 4
Page 13-15, Rev. 0
Page 13-16, Rev. 0
Page 13-17, Rev. 0
Page 13-18, Rev. 0
Page 13-19, Rev. 0
Page 13-20, Rev. 0
Page 13-21, Rev. 0
Page 13-22, Rev. 0
Page 13-23, Rev. 4
Page 13-24, Rev. 0
Page 13-25, Rev. 0
Page 13-26, Rev. 1
Page 13-27, Rev. 1
Page 13-28, Rev. 4

Valve Cold Shutdown Justifications:

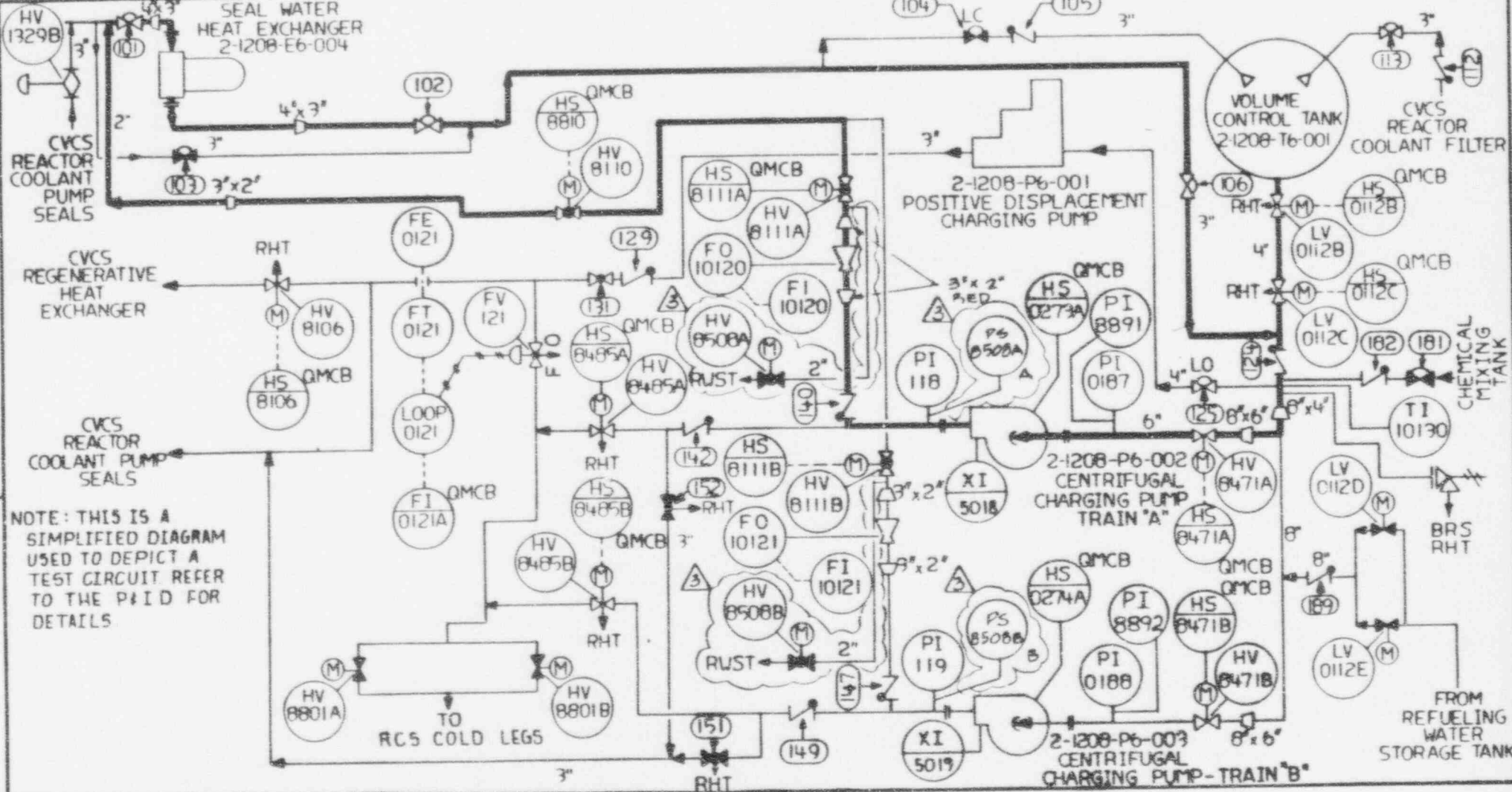
Page 14-1, Rev. 0
Page 14-2, Rev. 0
Page 14-3, Rev. 0
Page 14-4, Rev. 0
Page 14-5, Rev. 0
Page 14-6, Rev. 0
Page 14-7, Rev. 2
Page 14-8, Rev. 0

Valve Cold Shutdown Justification: (continued)

Page 14-9,	Rev. 0
Page 14-10,	Rev. 0
Page 14-11,	Rev. 0
Page 14-12,	Rev. 0
Page 14-13,	Rev. 0
Page 14-14,	Rev. 0
Page 14-15,	Rev. 0
Page 14-16,	Rev. 0
Page 14-17,	Rev. 3
Page 14-18,	Rev. 0
Page 14-19,	Rev. 0
Page 14-20,	Rev. 0
Page 14-21,	Rev. 0
Page 14-22,	Rev. 0
Page 14-23,	Rev. 0
Page 14-24,	Rev. 0
Page 14-25,	Rev. 0
Page 14-26,	Rev. 0
Page 14-27,	Rev. 0
Page 14-28,	Rev. 0
Page 14-29,	Rev. 0
Page 14-30,	Rev. 0
Page 14-31,	Rev. 4
Page 14-32,	Rev. 0
Page 14-33,	Rev. 0
Page 14-34,	Rev. 2
Page 14-35,	Rev. 0
Page 14-36,	Rev. 0
Page 14-37,	Rev. 0
Page 14-38,	Rev. 0
Page 14-39,	Rev. 1
Page 14-40,	Rev. 3
Page 14-41,	Rev. 5

DISTRIBUTION LIST

<u>HOLDER</u>	<u>MANUAL HOLDER</u>
L. K. Mathews	1
L. A. Ward	5
T. M. Hickox	6
J. G. Aufdenkampe	7
Document Control Supv.	8
J. J. Churchwell	10
Performance Supv.	11
R. Kies	12
Operatons Manager	14
Work Planning Supv.	16



NOTE: THIS IS A SIMPLIFIED DIAGRAM USED TO DEPICT A TEST CIRCUIT REFER TO THE P&ID FOR DETAILS.

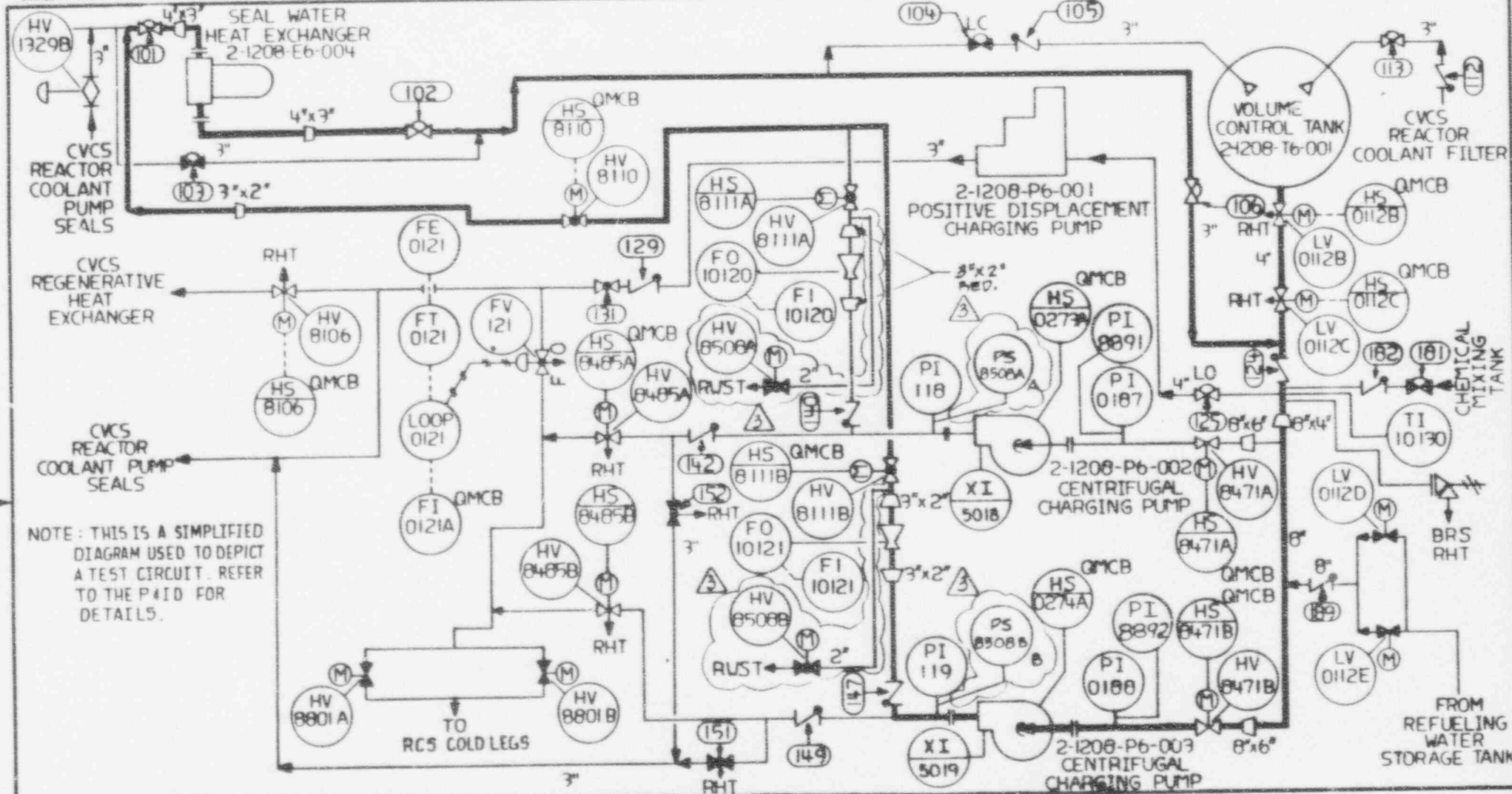
REV.	DATE	BY	CHK'D	DESCRIPTION	APPR. 1	APPR. 2	APPR. 3	APPR. 4	APPR. 5	REMARKS
0	9-5-87	BGL	WS	ISSUED FOR P&I						
1	1-26-88	CL	RZB	UPDATED TO REV 15 OF 2X4081G-208C						
2	4-19-89	TW	JMA	ADDED PI-8891 & PI-8892						
3	12-6-93	WIS	DAG	RELOCATED 2" BRANCH CONNS. AND ADDED PS8508A&B						

Southern Company Services, Inc. Georgia Power Company

VOGTLÉ ELECTRIC GENERATING PLANT UNIT-2

PUMP INSERVICE TESTING LOOP FOR CENTRIFUGAL CHARGING PUMP 2-1208-P6-002

DESIGNED FT	DRAWN DRC
TYPED	CHECKED WS
SCALE NONE	CONTINUED ON SHEET
PROJ. IS	DRAWING NUMBER
N/A	ISI-D-270
SHEET	REV.
1 OF 1	3



NOTE: THIS IS A SIMPLIFIED DIAGRAM USED TO DEPICT A TEST CIRCUIT. REFER TO THE P&ID FOR DETAILS.

REV.	DATE	BY	CHK'D	DESCRIPTION	APPR. 1	APPR. 2	APPR. 3	APPR. 4	APPR. 5	REMARKS
0	9-5-84	AM	WZ	ISSUED FOR PST						
1	1-26-88	CL	WZ	UPDATED TO REV 15 OF 2XAD0116-2						
2	4-19-89	WZ	JMA	ADDED PI-8891 & PI-8892						
3	12-2-93	WZ	DRG	RELOCATED 2 BRANCH CONNS. ADDED PS 8508B & A						

Southern Company Services, Inc. FOR Georgia Power Company

VOGIE ELECTRIC GENERATING PLANT UNIT-2

PUMP INSERVICE TESTING LOOP FOR CENTRIFUGAL CHARGING PUMP 2-1208-P6-003

DESIGNED	FT	DRAWN	DRK
TYPED		CHECKED	WS
SCALE	NONE	CONTINUED ON SHEET	
PROJ. I.D.	N/A	DRAWING NUMBER	10F13
	N/A		

VEGP Unit No. 2
Valve Test List
System:

Residual Heat Removal - System No. 1205

016 REV 5

Sheet 2 of 4

Valve Number	Class		P&ID (Coord.)	Cat	Valve Size		Act. Type	Position			Act. or Pass	Tests and Freq.					Relief Req. or C.S. Just.	Description and Notes
	ISI	Proj.			(in.)	Type		Norm	Fail	Safety		PI	ET	ST	FSV	LT		
HV 8804B	2	212	2X4DB122 (B-8)	B	8.00	GA	MO	C	AI	O/C	A	Y	CS	CS			CS-41 RR-2	RHR HX Train B to Safety In- jection Pump Suction
HV 8811A	2	212	2X4DB122 (B-3)	B	14.00	GA	MO	C	AI	O/C	A	Y	Q	Q				Containment Sump Isola- tion
HV 8811B	2	212	2X4DB122 (B-3)	B	14.00	GA	MO	C	AI	O/C	A	Y	Q	Q				Containment Sump Isola- tion
HV 8812A	2	212	2X4DB122 (E-4)	B	12.00	GA	MO	O	AI	O/C	A	Y	Q	Q				RHR Pump P6-001 Inlet From RWST
HV 8812B	2	212	2X4DB122 (C-4)	B	12.00	GA	MO	O	AI	O/C	A	Y	Q	Q				RHR Pump P6-002 In- let From RWST

VEGP Unit No. 2
Valve Test List
System:

Chemical and Volume Control - System No. 1208

016 REV 5

Sheet 5 of 7

Valve Number	Class		P&ID (Coord.)	Cat	Valve Size		Act. Type	Position			Act. or Pass	Tests and Freq.					Relief Req. or C.S. Just.	Description and Notes
	ISI	Proj.			(in.)	Type		Norm	Fail	Safety		PI	ET	ST	FSV	LT		
U4 021	2	212	2X4DB114 (D-3)	AC	0.75	CK	S	C	N/A	C	P						R	CVCS Seal Backflush Check - Pen- etration No. 49 (Note 1)
U4 140	2	212	2X4DB116-2 (G-6)	C	2.00	CK	S	C	N/A	O	A	Q						CCP Mini- flow
U4 147	2	212	2X4DB116-2 (C-6)	C	2.00	CK	S	C	N/A	O	A	Q						CCP Mini- flow
U4 185	2	212	2X4DB116-1 (D-1)	C	2.00	CK	S	C	N/A	O	A	CS					CS-29 RR-2	Boric Acid to Charging Pumps

VEGP Unit No. 2
Valve Test List
System:

Condensate Chemical Injection - System No. 1411

016 REV 5

Sheet 3 of 4

Valve Number	Class		P&ID (Coord.)	Cat	Valve Size		Act. Type	Position			Act. or Pass	Tests and Freq.					Relief Req. or C.S. Just.	Description and Notes	
	ISI	Proj.			(in.)	Type		Norm	Fail	Safety		PI	ET	SI	FSV	LT			
U4 676	2	212	2X4DB159-1 (G-2)	AC	0.50	GL	S	C	N/A	C	P							R	Wet Layup Chemical Ad- ditive Steam Generator B6-003 Containment Isolation Penetration No. 11A (Note 1)
U4 677	2	212	2X4DB159-1 (C-2)	AC	0.50	GL	S	C	N/A	C	P							R	Wet Layup Chemical Ad- ditive Steam Generator B6-004 Containment Isolation - Penetration No. 12A (Note 1)

VEGP Unit No. 2
 Valve Test List
 System:

Condensate Chemical Injection - System No. 1411

016 REV 5

Sheet 4 of 4

Valve Number	Class		P&ID (Coord.)	Cat	Valve Size		Act. Type	Position			Act. or Pass	Tests and Freq.					Relief Req. or C.S. Just.	Description and Notes
	ISI	Proj.			(in.)	Type		Norm	Fail	Safety		PI	ET	ST	FSV	LT		
U4 678	2	212	2X4DB159-3 (G-2)	AC	0.50	GL	S	C	N/A	C	P						R	Wet Layup Chemical Ad- ditive Steam Generator B6-001 Containment Isolation - Penetration No. 69A (Note 1)
U4 679	2	212	2X4DB159-3 (C-2)	AC	0.50	GL	S	C	N/A	C	P						R	Wet Layup Chemical Ad- ditive Steam Generator B6-002 Containment Isolation - Penetration No. 69B (Note 1)

COLD SHUTDOWN JUSTIFICATION

CS-41

SYSTEM: Residual Heat Removal - System No. 1205

VALVE: 1205-HV-8804B

CATEGORY: B

CLASS: 2

FUNCTION: This normally closed valve opens to provide a flow path to the suction of the SI pumps from the RHR system. While closed it directs flow from the RHR pumps to the RCS for low pressure injection and shutdown cooling.

QUARTERLY TEST
REQUIREMENT:

Exercise and Time (IWV-3412 and IWV-3413)

COLD SHUTDOWN
TEST JUSTIFICATION:

Testing this valve during normal operation requires defeating the associated ECCS interlocks. To defeat the interlock, a jumper must be installed across energized terminals. Installation of electrical jumpers across energized terminals during normal operation is undesirable because of the possibility of shorting the terminals and causing undesirable effects.

In addition, during the time the valve is opened and coincident with a small break LOCA the potential to overpressurize the SI suction piping exists. With the valve open and coincident with a large break LOCA potential exists to runout either or both of the RHR pumps. Either one of these cases could cause component damage and place the plant in an undesirable condition.

QUARTERLY PARTIAL
STROKE TESTING:

None for same reasons provided above.

COLD SHUTDOWN
TESTING:

Exercise and Time