

EXERCISE MANUAL

FEMA/NRC OBSERVED EXERCISE

SUSQUEHANNA STEAM ELECTRIC STATION

March 23, 1983

PENNSYLVANIA POWER & LIGHT COMPANY

8304060019 830314  
PDR ADOCK 05000387  
F PDR

EXERCISE MANUAL  
TABLE OF CONTENTS  
1983 FEMA/NRC OBSERVED EXERCISE  
SUSQUEHANNA STEAM ELECTRIC STATION

1. Exercise Week Schedule
2. Exercise Objectives
  - 2.1 PP&L Objectives
  - 2.2 State Exercise Objectives
3. Exercise Scope and Guidelines
  - 3.1 PP&L Emergency Exercise Guidelines
  - 3.2 PEMA Exercise Methodology
  - 3.3 Counties and Municipalities
4. List of Participating Organizations
5. Locations, Addresses and Maps
6. Controller, Referee, and Observer Lists
7. References
8. List of Acronyms

SECTION 1.0

Exercise Week Schedule for  
1983 FEMA/NRC Observed SSES Exercise

Thursday, March 17, 1983

A. Time: 11:00 a.m.  
Location: Susquehanna Energy Info Center  
Route 11  
Berwick, Pennsylvania  
Purpose: Pre-Exercise Media Briefing  
PP&L & PEMA  
Attendees: Media  
Meeting Coordinators: J. H. Saeger, PP&L  
J. Comey, PEMA

Tuesday, March 22, 1983

A. Time: 9:00 a.m.  
Location: Reliance Fire Company  
501 West Third Street  
Berwick, Pennsylvania  
Purpose: Pre-Exercise Briefing of Referees/Controllers/  
Observers/Evaluators  
Attendees: PP&L Referees/NRC Observers  
Meeting Coordinator: E. A. Heckman, PP&L  
B. Time: 1:00 p.m.  
Location: Reliance Fire Company  
501 West Third Street  
Berwick, Pennsylvania  
Purpose: On-site scenario specific training and briefing  
on location of Referees/Observers/Evaluators  
Attendees: PP&L Referees and Observers  
NRC Observers/Evaluators  
FEMA Site Observer  
Meeting Coordinator: E. A. Heckman, PP&L

C. Time: 3:00 p.m.  
Location: Reliance Fire Hall  
501 West Third Street  
Berwick, Pennsylvania  
Purpose: PEMA/FEMA Controller/Evaluator  
Briefing  
Attendees: PEMA/FEMA Controllers/Evaluators  
Meeting Coordinator: W. Johnson  
PEMA

Wednesday, March 23, 1983

A. Time: Beginning approximately 12:15 p.m.  
Location: SSES  
Purpose: Commence 1983 FEMA/NRC Observed SSES Exercise

Thursday, March 24, 1983

A. Time: 1:00 p.m.  
Location: Reliance Fire Company  
501 West Third Street  
Berwick, Pennsylvania  
Purpose: PP&L Critique of SSES Site Exercise  
Attendees: PP&L Site and Corporate Personnel  
PP&L Referees  
NRC  
Meeting Coordinator: E. A. Heckman, C. R. Wike, PP&L

B. Time: 4:00 p.m.  
Location: Reliance Fire Company  
501 West Third Street  
Berwick, Pennsylvania  
Purpose: NRC Critique of SSES Site Exercise  
Attendees: PP&L Site and Corporate Personnel  
PP&L Referees  
NRC  
Meeting Coordinator: R. Smith, NRC



Friday, March 25, 1983

A. Time: 10:00 a.m.

Location: Reliance Fire Company  
501 West Third Street  
Berwick, Pennsylvania

Purpose: FEMA/NRC Critique of State and County  
Performance

Attendees: State and County Agency Leaders  
PP&L Staff Personnel  
NRC  
FEMA  
State and County Controllers and Observers  
Media and public may attend, but not  
participate

Meeting Coordinator: J. Asher, FEMA

## SECTION 2.0

### Exercise Objectives

This section contains two subsections which define the combined objectives for the 1983 FEMA/NRC Observed Exercise for the Susquehanna Steam Electric Station.

2.1 Pennsylvania Power & Light Objectives

2.2 State Exercise Objectives

## SECTION 2.1

### Susquehanna Steam Electric Station Objectives for 1983 NRC Observed Exercise

1. To provide the basis for an approximately 8-hour utility-state-county-local municipality radiological emergency exercise. This exercise will include participation by Susquehanna Steam Electric Station (SSES), Pennsylvania Power and Light Allentown, Commonwealth of Pennsylvania Department of Environmental Resources/ Bureau of Radiation Protection (DER/BRP) (modified participation), Commonwealth of Pennsylvania (modified participation), county and municipal governments, and appropriate off-site agencies.
2. To exercise the SSES Emergency Plan, County and Municipal Government Radiological Emergency Response Plans, and, on a modified scale, the Radiological Emergency Response Plan of the Commonwealth of Pennsylvania.
3. To determine the cause of the emergency condition, terminate the condition with consideration of appropriate engineering safeguards and radiological controls, and place the plant in a safe condition.
4. To test and exercise SSES site communications associated with a plant radiological emergency. To test, via communications networks, the capability to coordinate SSES, Commonwealth, NRC and federal agency emergency response personnel.
5. To perform a limited site personnel accountability.
6. To perform timely and accurate dose calculations for gaseous releases.
7. To evaluate the ability to deploy and control emergency response teams both in-plant and off-site.
8. To test communications, activation, functional operation and coordination of the Operations Support Center, Technical Support Center, Emergency Operations Facility, Media Operations Center, and General Office Support Facilities.
9. To test the ability of SSES personnel to respond to and terminate a fire in a non-safety-related area of the plant, including response and coordination of off-site support fire companies.
10. To test the ability of SSES personnel to demonstrate personnel and equipment contamination control, including appropriate decontamination procedures.
11. To test the ability to activate the Public Notification System and broadcast emergency messages via the EBS network.
12. To test the ability of PP&L's Emergency Organization to provide timely and accurate protective action recommendations, including coordination of these recommendations with appropriate off-site authorities.

13. To test the ability of the plant to effectively use the post accident sampling station.
14. To demonstrate an effective exercise critique program.

## SECTION 2.2

### State Exercise Objectives

Basic to the successful accomplishment of the State-Susquehanna exercise objectives is the demonstrated capability of all participants to interface and coordinate among the appropriate levels of state, county and municipal government.

#### I. NOTIFICATION

##### A. Notification of Officials and Staff:

1. To test and evaluate the adequacy of the fixed nuclear facility incident notification and alert procedures in the following areas:
  - a. Notification by the Susquehanna Steam Electric Station to Pennsylvania Emergency Management Agency (PEMA) and Columbia and Luzerne County governments.
  - b. Notification by the Pennsylvania Emergency Management Agency (PEMA) to Bureau of Radiation Protection (BRP); risk county's emergency operations center; PEMA Area EOCs; selected state agencies; and the Federal Emergency Management Agency (FEMA). BRP notifies Federal Department of Energy (DOE).
  - c. Notification by the county's Emergency Management Agency to risk municipal Emergency Management Agencies (EMA) and county emergency response staff personnel.
  - d. Notification by municipal EMAs of municipal emergency response staff personnel.
  - e. Notification of support counties.
2. To test and evaluate the ability of key emergency response personnel in implementing notification procedures for fixed nuclear facility incidents, to include continuing notification and coordination.

##### B. Public Alert/Notification and Information:

1. To evaluate the ability of state, county and municipal authorities to alert and notify the public of incidents within the plume exposure pathway emergency planning zone of the Susquehanna Steam Electric Station, to include use of sirens, route alerting, all communications means available.
2. To evaluate the ability of the state's and county's authorities to provide the public within the 10-mile emergency planning zone of the plant periodic updates of emergency status.

## II. EXTERNAL COMMUNICATIONS

- A. To test and evaluate the adequacy of all planned communications systems among and between the participants.
- B. To evaluate the need for and availability of communications circuits between and among the participants.
- C. To review all primary communications circuits for back-up communications capability.
- D. To determine the efficiency and effectiveness of communications circuits such as EBS and RACES.
- E. To evaluate the availability and effectiveness of the communications interface with federal agencies and/or contiguous states.

## III. EMERGENCY OPERATIONS CENTER (STATE/COUNTY/MUNICIPAL)

- A. To test and evaluate the adequacy of the emergency operations centers with respect to space, comfort and function for managing a fixed nuclear facility incident.
- B. To test and evaluate the adequacy, appropriateness, and effectiveness of the internal communications system within the EOC, to include maps and displays.
- C. To evaluate the adequacy of staffing and competency of the staffs.
- D. To test and evaluate the adequacy of access control and security means for EOC.

## IV. DIRECTION AND CONTROL

- A. To evaluate the ability of key state, county and municipal emergency response personnel to initiate and coordinate timely and effective decisions with respect to fixed nuclear facility incidents.
- B. To evaluate the capability of state, county and municipal emergency response agencies to identify and provide for resource requirements.
- C. To evaluate the capability of state, county and municipal governments in coordinating (internally/externally) actions, needs and status of situations between organizations for the purpose of acquiring support and evoking appropriate decisions.
- D. To evaluate the level of support and participation provided by the responsible elected/appointed officials.

## V. EMERGENCY PLANS

To evaluate the adequacy and capability of implementation of state, risk and support counties, and municipal emergency response plans.

VI. PUBLIC INFORMATION

To evaluate the adequacy of the interface of state, county and Susquehanna facility public information systems with the news media, to include news media briefing room, rumor control measures, etc.

VII. ACCIDENT ASSESSMENT (Bureau of Radiation Protection)

To evaluate the effectiveness of the fixed nuclear facility accident assessment system, to include adequacy of equipment, personnel staffing and competency skills with respect to reporting, dose projection, field measurement, coordination, and communications.

VIII. PROTECTIVE MEASURES

To evaluate the capability of the state, county and municipal emergency response systems to make decisions and to implement protective actions, to include, but not be limited to, evacuation, sheltering, reception centers, mass care/decontamination centers, decontamination stations, risk school district procedures, ambulance service, bus operations, and pickup points.

IX. RADIOLOGICAL EXPOSURE CONTROL

- A. To evaluate the capability of state, county and municipal emergency response personnel to implement access control points and traffic control points.
- B. To evaluate methods for distribution, issuance, administering and record keeping of potassium iodide (KI) to emergency workers.
- C. To evaluate methods for distribution of dosimetry to emergency workers.
- D. To evaluate the methods and capability of state, county and municipal emergency personnel for keeping records of individual radiation exposure doses.
- E. To evaluate methods and resources for decontamination procedures.

X. RE-ENTRY AND RECOVERY

To be evaluated as a separate exercise in CY 1984.

## SECTION 3.0

### Exercise Scope and Guidelines

This section contains three subsections which define the scope, guidelines, and ground rules that apply to 1983 FEMA/NRC Observed Exercise for the Susquehanna Steam Electric Station.

#### 3.1 PP&L Emergency Exercise Guidelines

- o Attachment 1 - Identification of Actual and Simulated Events
- o Attachment 2 - Applicability of Emergency Plan and Implementing Procedures to Activity Exercised

#### 3.2 PEMA Exercise Methodology

- o Enclosure 1 - County and Municipal Checklist for Joint Full Scale Exercises
- o Enclosure 2 - Actual and Simulated Events



## SECTION 3.1

### PP&L Emergency Exercise Guidelines Susquehanna Steam Electric Station

Guidelines are provided to all players, referees and observers to define appropriate ground rules for the proper conduct of the emergency exercise. These ground rules are contained in this section:

#### COMPLIANCE WITH ALL LAWS

Intentional violation of any laws is not permitted during any exercise. Exercise participants, referees and observers should comply with all Federal, State and local legal restrictions. Specifically, all local traffic laws such as speed limits should be observed.

#### AVOID PROPERTY ENDANGERMENT

Exercise participants, referees and observers should avoid endangering property (public or private), members of the general public or the environment.

#### MINIMIZE PUBLIC INCONVENIENCE

It is not the intent to arouse or inconvenience the public during the conduct of an exercise. In order to minimize public inconvenience, the public should be informed both prior and during the exercise. Also, all communications, particularly in the public relations area, should be prefaced with "This is a drill."

#### INTERFACE WITH OPERATING UNIT AND STAFF

Normal operation of Unit 1 will be in progress concurrently with the conduct of the Emergency Exercise. The staff operating Unit 1, especially the Shift Supervisor, is responsible for all activities affecting the plant. The Shift Supervisor may terminate the exercise if at any time he feels conditions in the plant or activities in the exercise warrant termination. He may make this decision unilaterally. He will inform the Chief Referee of his decision and the Chief Referee will take all steps necessary to terminate the exercise.

#### PROVISIONS FOR ACTUAL EMERGENCY

Exercise participants, referees and observers should not take any actions which would preclude maintaining emergency readiness of the organization and community. If an actual emergency occurs during the exercise requiring a group to terminate its participation in the exercise, they should notify the lead State controller in the case of off-site agencies and the chief or lead referee in the case of utility personnel. All messages concerning actual emergency events should be preceded with "THIS IS NOT, REPEAT, NOT AN EXERCISE MESSAGE."

Emergency contact numbers to notify of actual emergencies or unforeseen contingencies:

Chief Referee, SSES (717) 542-2181, Ext. 3532  
PP&L General Office, Allentown (215) 770-7500  
Special Office of the President, Berwick (717) 542-2137

#### COMMUNICATIONS

Communications between all exercise participants shall occur in accordance with the procedures of all applicable emergency response plans. All communications including telephone conversations, radio transmittals, loudspeaker announcements, etc., should begin and end with "This is a Drill, REPEAT, This is a Drill."

#### ACTUAL AND SIMULATED EVENTS

During the emergency exercise, certain events and activities will only be simulated rather than utilize the actual employment of resources.

The definition of actual and simulated events are as follows:

- 1) Simulation - involves identification and utilization of requirements and procedures short of actual employment
- 2) Actual - movement of resources and/or physical implementation for this exercise

#### SEQUENCE OF EVENTS

Due to the accelerated nature of the scenario and the variety of emergency responses to be demonstrated, some of the emergency actions taken will occur out of sequence. During an actual emergency, these actions would not be performed in the time frame which we will utilize for the purposes of the exercise. Participants should be cognizant of such out-of-sequence events and not allow these events to confuse the main flow of the exercise.

#### REFEREE/PARTICIPANT INTERFACE

Data will be provided in 15-minute intervals only. Data for the time period between 15-minute updates and data for future times are not available to participants. Participants should request from the referees any data which they feel is necessary for the performance of their function. Referees will not provide any information contained in approved plans, procedures, drawings or instructions.

## PARTICIPANT ACTIONS

All decisions made by the participant and pertinent to the scenario should be communicated to the referee and/or logged by the participant.

## REFEREES

All referees will communicate via predesignated communication links and have two functions:

- to give data to the participants
- to critique performance of the participants

Lead Facility Referees will maintain control and flow of the exercise activities within each facility and have the ability to adjust the scenario accordingly.

The Chief Referee will be responsible for overall control of the exercise. He will maintain flow, provide team referees as needed, and provide unanticipated data if necessary for cohesion of the exercise. He will also have the final say on all adjustments to the scenario.

## OBSERVERS

Observers are present to observe the exercise only and should not under any circumstances interface with the participants. Their input will not appear in the PP&L critique.

## TERMINATION OF THE EXERCISE, DEBRIEFING AND CRITIQUE

1. Participation by PP&L personnel will be terminated as appropriate by the direction of the Chief Referee.
2. Each Emergency Manager/Coordinator shall debrief exercise participants in his functional area. Functional area referees will participate in this debrief/critique session. After this debriefing, all participants should be released from the exercise.
3. Emergency Managers/Coordinators within each facility shall meet and conduct a short facility debriefing.
4. All referees should complete their critique sheets and prepare a list of major findings. They should gather all records generated during the exercise and convey these records and their comments to the lead Facility Referees.
5. The Lead Facility Referees will meet and prepare the overall drill critique.

REFEREE/PARTICIPANT IDENTIFICATION SYSTEM

Personnel identification can be a problem and cause confusion because it is difficult to identify who is participating and what their function is. To remedy this problem a system of visual identification has been established for this exercise.

Referees will wear brightly colored Tee-shirts with "REFEREE" printed on front and back. The LEAD FACILITY REFEREES managing the exercise (with the authority to make decisions) will wear RED Tee-shirts. STAFF REFEREES (who observe and provide data but cannot make judgment decisions) will wear YELLOW Tee-shirts. OBSERVERS (who should have no verbal contact with participants) will wear BLUE Tee-shirts. This group includes personnel from the NRC, INPO and other utilities.

Exercise participants will wear color coded baseball caps which identify their participation in the exercise and their function. The breakdown is as follows:

- RED.....Emergency Director/Recovery Manager
- YELLOW.....Emergency Managers and Coordinators (functions will be identified on cap)
- WHITE.....Participating Agencies (i.e., NRC and DER personnel responding to the exercise)
- BLUE.....Emergency Staff (personnel reporting directly to the Managers and Coordinators)
- GREEN.....Operating Crew and On-Site and Off-Site Teams
- LIGHT BLUE.....Clerical and Stenographic Staff

SUSQUEHANNA STEAM ELECTRIC STATION

Identification of Actual and Simulated Events - PP&L

	<u>ACTUAL</u>	<u>SIMULATION</u>
A. Assignment of Responsibility		
o To demonstrate that emergency personnel understand and can implement their responsibilities	X	
o To demonstrate the initial response of emergency personnel	X	
o To demonstrate the ability to augment the initial response personnel on a continuous basis		X
B. On-site Emergency Organization		
o To demonstrate the response of the on-shift emergency organization	X	
o To demonstrate the timely augmentation of the on-shift emergency organization	X	
o To demonstrate that sufficient qualified personnel are available to respond to the postulated events	X	
o To demonstrate the timely augmentation of the plant staff emergency organization by corporate support personnel	X	
o To demonstrate the ability to procure assistance from outside contractors and private organizations		X
o To demonstrate the ability to obtain services from local emergency agencies (including police and fire companies)	X	
o To demonstrate the ability to handle personnel and equipment contamination	X	

	<u>ACTUAL</u>	<u>SIMULATION</u>
C. Emergency Response Support and Resources		
o To demonstrate the ability to request assistance from Federal resources		X
o To demonstrate the ability to support Federal resources		X
o To demonstrate the ability to accommodate state and local staff at the EOF	X	
o To demonstrate the capability of dispatching representatives to the principal government EOCs	X	
o To demonstrate the ability to obtain assistance from nuclear and other facilities, organizations or individuals identified in the SSES Emergency Plan		X
o To demonstrate the ability of PP&L General Office personnel to provide support	X	
D. Emergency Classification System		
o To demonstrate the ability to properly classify the simulated event	X	
E. Notification Methods and Procedures		
o To demonstrate the notification of state and local response organizations based on the emergency classification	X	
o To demonstrate the effectiveness of notification messages and verification of these messages	X	
o To demonstrate the ability to alert, notify, and mobilize emergency response personnel	X	
o To demonstrate the ability to provide all required information in follow-up messages to off-site authorities	X	
o To demonstrate the ability to provide timely and accurate protective action recommendations to the state	X	

	<u>ACTUAL</u>	<u>SIMULATION</u>
F. Emergency Communications		
o To demonstrate the operation of the 24-hour per day state/local notification systems	X	
o To demonstrate the adequacy of communications with state/local governments during the exercise		X
o To demonstrate the adequacy of communications with federal emergency response organizations including the NRC Regional Office Emergency Operations Centers		X
o To demonstrate the adequacy of communications between the PP&L emergency facilities and radiological monitoring teams		
o To demonstrate the adequacy of communications with fire-fighting support facilities		X
G. Public Education and Information		
o To demonstrate the adequacy of facilities used for dissemination of information to news media		X
o To demonstrate the ability of the PP&L spokesperson to access and disseminate necessary information		X
o To demonstrate the ability for timely exchange of information among designated spokespersons		X
o To demonstrate the ability to deal with rumors		X
H. Emergency Facilities and Equipment		
o To demonstrate the adequacy of the physical layout and operation of the Technical Support Center		X
o To demonstrate the adequacy of the physical layout and operation of the Emergency Operations Facility		X
o To demonstrate the timely activation and staffing of all emergency facilities		X

	<u>ACTUAL</u>	<u>SIMULATION</u>
o To demonstrate the ability to provide adequate supplies and equipment for use by on-site teams	X	
o To demonstrate the ability to receive and analyze field monitoring data and coordinate sample media at the Emergency Operations Facility	X	
o To demonstrate the ability to effectively use the Post Accident Sampling Station	X	
1. Accident Assessment		
o To demonstrate the ability to utilize post accident sampling data, radiation and effluent monitor data, in-plant iodine instrumentation data, and containment radiation monitoring data to provide initial and continuing accident assessment	X	
o To demonstrate the ability to predict on-site and off-site exposures for various meteorological conditions based on effluent monitor readings	X	
o To demonstrate the ability to perform field monitoring within the plume exposure Emergency Planning Zone	X	
o To demonstrate the ability to activate, equip, deploy and communicate with off-site monitoring teams	X	
o To demonstrate the ability to estimate integrated dose from projected and field monitored dose rates and compare these estimates with protective action guides	X	
o To demonstrate the ability to determine the cause of the emergency condition, terminate the condition with consideration of appropriate engineering safeguards, and place the plant in a safe condition	X	



	<u>ACTUAL</u>	<u>SIMULATION</u>
J. Protective Response		
o To demonstrate the ability to warn or advise personnel on-site of emergency conditions	X	
o To demonstrate the ability to evacuate nonessential personnel from the site	X*	X
o To demonstrate the ability for radiological monitoring of people evacuated from the site		X
o To demonstrate the ability to provide evacuation routes and transportation for on-site personnel to some suitable off-site location		X
o To demonstrate the capability to account for all individuals on-site at the initiation of the exercise and continuously thereafter	X*	X
o To demonstrate the ability to provide respiratory protection, protective clothing and radioprotective drugs to personnel on-site during the exercise when required	X	
o To determine the ability to assess and recommend protective actions to state and local authorities	X	
K. Radiological Exposure Control		
o To demonstrate the application of on-site exposure guidelines consistent with Station Protective Actions Guides and Procedures	X	
o To demonstrate the procedures for permitting on-site workers to exceed doses in excess of 10CFR20 limits	X	
o To demonstrate the ability to provide and monitor dosimeters for emergency workers	X	

\* A pre-selected group of on-site personnel will participate in this activity.

	<u>ACTUAL</u>	<u>SIMULATION</u>
K. Radiological Exposure Control (Cont'd)		
o To demonstrate the ability to evaluate the need for and provide the means for personnel decontamination	X	
o To demonstrate the ability to provide contamination control measures such as area access control	X	
o To demonstrate the ability to estimate total population exposure	X	
L. Fire-Fighting Support		
o To demonstrate the ability of SSES personnel to respond to and terminate a fire in a non-safety related area of the plant, including response and coordination of off-site support fire companies	X	

APPLICABILITY OF EMERGENCY PLAN AND  
IMPLEMENTING PROCEDURES TO ACTIVITY EXERCISED  
SUSQUEHANNA STEAM ELECTRIC PLANT

<u>ACTIVITY EXERCISED</u>	<u>IMPLEMENTING PROCEDURES *</u>	<u>EP SECTION</u>
1. Emergency Classification	EP-IP-001	4.1, 4.2 6.1, 2.2
2. Notification of Off-site Agencies	EP-IP-002 EP-IP-018	5.4
3. Response of On-Shift Emergency Organization	EP-IP-002 EP-IP-003	6.1.1, 6.4, 6.3 6.2, 5.1
4. Activation of On-site Emergency Organization	EP-IP-003 EP-IP-018 EP-IP-029 EP-IP-002	7.5, 5.2 6.2
5. Activation of Off-site Emergency Organization	EP-IP-030 EP-IP-031 EP-IP-002 EP-IP-003 EP-IP-032	5.3, 6.2
6. Emergency Communications	EP-IP-018 EP-IP-002	5.4, 7.6
7. Dose Assessment	EP-IP-003 EP-IP-009 EP-IP-033	6.2.5
8. Post Accident Sampling	EP-IP-034 EP-IP-035 EP-IP-043 EP-IP-045 EP-IP-046 EP-IP-047 EP-IP-048	8.1.2
9. On-site Radiological Monitoring	EP-IP-012 EP-IP-010 EP-IP-035	6.2
10. Off-site Radiological Monitoring	EP-IP-013 EP-IP-019	6.2

\* Applicable Implementing Procedures as of November, 1982.

<u>ACTIVITY EXERCISED</u>	<u>IMPLEMENTING PROCEDURES *</u>	<u>EP SECTION</u>
11. Site Evacuation and Personnel Accountability	EP-IP-007 EP-IP-021	6.1.1 6.5
12. Protective Action Recommendations	EP-IP-003 EP-IP-033	6.4
13. Public Information Dissemination	EP-IP-031 EP-IP-032	8.4 6.1.2
14. Downgrade and Termination	EP-IP-028	6.3
15. Environmental Sampling	EP-IP-044	6.4
16. Fire Emergencies	EP-IP-041	5.3.3 & Table 5.1

\* Applicable Implementing Procedures as of February 3, 1983.

## SECTION 3.2

### PEMA Exercise Methodology

The items discussed below are important highlights of the methodology to be used in the conduct of the State-Susquehanna Steam Electric Station exercise on March 23, 1983.

Annex E, State Disaster Operations Plan, and the appropriate county and municipal plans are the basic tool of all exercise play. All participants must understand and use these plans as the basis for all decisions and implementing actions.

#### 1. Free Flow Concept

- a. The simulated events, radiation readings, and emergency classifications provided by the tested nuclear power facility through the course of the exercise will be the key input that drives the exercise play. The exercise play will depend upon responses, decisions, and implementing actions taken by the exercise players, particularly the executive group, operations group, and key state agencies. This free flow method will allow for testing of some vital key elements of the state plan as well as the exercise of judgment, spontaneous response to realistic situations, the ability to reach decisions on appropriate courses of action, and the implementation of these decisions.
- b. Because the participation of volunteers at the county and municipal level is vital to the manning of all staffs and agencies, maximum possible consideration will be given to the timing of the escalating emergency action levels in order to permit maximum participation of volunteers and still insure the successful demonstration of the respective plans' capabilities.

#### 2. FEMA Observers

Federal Observers will be assigned to key locations at the state, county and municipal levels. These observers will use a standard federal checklist to evaluate activities. The Federal Observer should be given free access to information and notified of critical action taken by emergency personnel in response to the simulated incident since what the Federal Observer does not see, he cannot grade.

#### 3. State Controllers

- a. It is important that the State Controllers be fully aware throughout the course of the exercise of the level of response and the degree to which the scenario is generating the desired range of responses for those key plan elements that must be successfully tested. For this reason, key State Controllers will participate as "silent partners" with the key exercise participants.

- b. Through this silent participation, the State Controllers will be able to monitor the "pulse" of the exercise, in order to more effectively assist exercise play. The exercise control group has the prerogative of temporarily halting the exercise play and of intervening in any element of exercise response to correct perceived major difficulties, either developing or actual. Such action will be reserved solely for major problems that, if not corrected, could threaten successful accomplishment of major exercise objectives.
- c. Controller assignments will be made by the Director, PEMA, for each exercise. State Controllers will be assigned to state, county and municipality EOCs to monitor and stimulate as needed activities in critical areas. County Emergency Management Coordinators should ensure that an area is made available for the State Controller. In addition, a telephone should be provided for the State Controller to facilitate his contact with the State EOC and other Controllers.

4. County and Municipal Participants

- a. For an item of the plan to be tested and evaluated, that item must be demonstrated by county and/or municipal personnel.
- b. County Emergency Management Agencies should activate staff and support personnel. The degree of activation is determined by the resources necessary to conclusively demonstrate to the Federal Observers the county's capability to successfully operate critical areas such as reception centers, mass care/decontamination centers, decontamination stations, evacuee monitoring, issuance of dosimetry and record keeping, route alerting, access and traffic control points, EBS and RACES communications, and risk area school district procedures, etc.
- c. Municipalities should activate staff and support personnel. The degree of activation is determined by the resources necessary to conclusively demonstrate to the Federal Observers the county's capability to successfully operate its facilities.
- d. Elected officials should be available and participate in decisions. Decisions, such as mobilizations of resources, should be coordinated through elected or appointed officials or their representative. In areas where actual deployment of resources is necessary to test exercise objectives, the general guidance is that a sufficient number of resources must be deployed to demonstrate that the plan is adequate and that the plan could be implemented.
- e. News media should be planned for and provisions made to provide regularly scheduled briefings at the Media Center. Public information should be simulated on a timely, frequent basis. The information should be accurate and informative and coordinated with PEMA's Public Information Officer.

5. Actual and Simulated Events

Definition and identification of actual and simulated events for this exercise are contained in Enclosure 2 of this section.

COUNTY AND MUNICIPAL CHECKLIST FOR JOINT FULL SCALE EXERCISES

<u>Function</u>	<u>Performed by:</u>	
	<u>County</u>	<u>Municipality</u>
<u>Emergency Operations Center:</u>		
1. Activate EOC of each risk county and notify principal elected county officials.	X	-
2. Assure presence of the mass care coordinator and Red Cross representative, or their designees, at the county EOC for play counties.	X	-
3. Assure a system for personnel identification for entrance to the activated EOCs. A uniformed guard should be stationed at each EOC entrance to check identification.	X	X
4. Assure presence of USDA County Agricultural Agent to participate in play in both risk and support counties.	X	-
5. Play risk counties, provide a news media briefing room and plan for periodic briefings.	X	-
6. Designate Rumor control phone number, advise EBS, and simulate operation.	X	-
7. Play municipalities activate their EOCs and notify principal elected officials.	-	X
8. Non-play municipalities provide initial notification to their elected officials, but need not activate EOC.	-	X
9. Instruct players that whenever they are confronted with a problem that cannot be resolved, refer it to the appropriate EMC for instructions.	X	X
10. The county and municipal EMCs provide for the delegation of authority in the EOC when absent from it.	X	X
11. Play counties/municipalities should urge elected officials to participate at EOCs.	X	X



Performed by:

Function

County

Municipality

Operations:

- |  |   |   |
|--|---|---|
| 1. Initial notification of municipalities within the plume exposure pathway EPZ.   | X | - |
| 2. There should be 100% communications for initial notification of risk counties, risk municipalities and play support counties, as well as for involved agencies within play counties/municipalities. Subsequent notification of events will only be made to the risk counties, play municipalities and play support county, and agencies involved. Play counties/municipalities are expected to respond and agencies involved will accomplish necessary communications. Play counties should, however, simulate subsequent calls to all risk municipalities to include logging simulated messages. | X | X |
| 3. One fire company in each play municipality must have an alert team travel its predesignated alert sector route and simulate announcing an incident at the nuclear facility and that persons should tune to their EBS station for instructions. All alert teams in the play municipality must have predesignated routes and a prepared message available.  | X | X |
| 4. Activated EOC's reception centers and mass care centers must provide for 24-hour staffing to include a list of personnel for second shift. Personnel should be called, but need not assemble.   | X | X |
| 5. Be prepared to demonstrate capability to provide and operate pick-up points for persons without transportation:<br><br>(1) County EOC to know locations of all pick-up points.<br>(2) Dissemination of information to public.<br>(3) Source of transportation and drivers.  | X | X |

It will be necessary to demonstrate conclusively that busses can be sent to pick-up points.

Performed by:

Function

County

Municipality

Operations: (Cont'd)

- |     |   |   |   |
|-----|---|---|---|
| 6.  | Bus companies in play counties should be notified of the possible requirements in the event of evacuation.  | X | - |
| 7.  | Lists of persons requiring special transportation must be available in play municipalities.   | - | X |
| 8.  | Activate invalid pick-up plan. Actual communications, simulate pick-up.   | X | X |
| 9.  | Play counties/municipalities should notify hospitals and nursing homes of essential information on a need-to-know basis.  | X | X |
| 10. | Activated reception centers must be representatively manned (1 or 2 persons) and have strip maps to mass care centers available.  | X | - |
| 11. | One mass care center must be opened in the "play" risk and support counties. Minimum staffing is the the mass care manager. It is desirable to include a representative from each major component of the center where possible in order to demonstrate fully the mass care center's capability. Each manager must report to the center with the SOP, personnel manning list and all necessary forms. The manager should be prepared to explain the operation of the center. | X | - |
| 12. | Provisions must be made to simulate transport of a contaminated victim from a mass care center to a hospital with the capability to treat such victims. Ambulance and appropriate hospital should be contacted.   | X | X |
| 13. | Hospital should insure efficiency of examination procedures, to include hospital entry for potential contaminated patients, security personnel assistance procedures, and integrity of the detector's probe, etc.   | X | - |
| 14. | Play municipalities activate representative traffic control points on feeder evacuation routes.   | - | X |

Performed by:

Function

County

Municipality

Radiological/Dosimetry:

- | <u>Function</u>  | <u>County</u> | <u>Municipality</u> |
|--|---------------|---------------------|
| 1. County EMA will have prepared ahead of the date of the exercise the dosimetry (includes CDV 730, CDV 742, and TLD), KI, Dosimetry-KI Report Forms, survey meters, Personnel Decontamination Monitoring Report Forms, and associated "property custody receipts" to facilitate organized and quick distribution of the equipment, KI, and forms at the time of the exercise. | X             | -                   |
| 2. Dosimetry, KI, survey meters and associated forms issued to emergency worker organizations at Site Emergency classification, or sooner if word is received from PEMA.   | X             | X                   |
| 3. County EMA designate a "Contact and Dosimetry-KI Distribution Point for Farmers," staff it with at least one key person and have available an appropriate number of "Farmer Emergency Worker Certification Forms" and units of dosimetry-KI.  | X             | -                   |
| 4. County EMA will demonstrate proper handling of "control TLDs" and associated form.  | X             | -                   |
| 5. Each play county should designate at least one fire company outside, but close to EPZ, to serve as Decontamination Station for emergency workers.   | X             | X                   |
| 6. All emergency personnel and players in play counties/ municipalities must know self protection dosimetry-KI procedures, including completion of the Dosimetry-KI Report Form.   | X             | X                   |
| 7. Activated decontamination teams at mass care/ decontamination centers must be provided with dosimetry-KI protection and survey meters and forms.  | X             | -                   |
| 8. A trained radiation monitor with necessary forms and equipment must report to the mass care center/decontamination center prepared to demonstrate how decontamination monitoring will take place. A demonstration will be required by evaluators.   | X             | X                   |

Performed by:

Function

County

Municipality

Radiological/Dosimetry: (Cont'd)

9. Status of decontamination monitoring at mass care centers relayed to BRP through county and PEMA EOC.

X

-

Schools:

1. Unmet requirements for evacuation of school children must be reported to county by affected school district.

X

-

2. Play counties must ensure that school districts having schools within play municipalities implement and test their bus driver alert system.

X

-

Communications:

1. County-to-county communications must be maintained.

X

-

2. Play counties and municipalities utilize RACES operation to the maximum extent possible and in accordance with county plans. When available, RACES should be demonstrated at EOCs, a mass care center, a school district, and a reception center in that priority.

X

X

3. A test of EBS stations for play counties will be part of the exercise. Play counties should be prepared to explain and demonstrate how EBS messages will be transmitted to stations. EBS test must be monitored to play counties. EBS messages should be prepared and the interface with the EBS station tested with an actual transmission.

X

-

4. Communications should be established and maintained between the play county EOC and the reception center.

X

-

5. Communications should be established and maintained between the play county EOC and mass care center.

X

-

Performed by:

Function

County

Municipality

Communications: (Cont'd)

- |    |  |   |   |
|----|--|---|---|
| 6. | Communications must be established between the play county EOC and the risk school districts. School districts with schools within play municipalities should notify host school districts or student pick-up points that a specific school or schools may or will be evacuated. | X | - |
| 7. | Police, fire and ambulance radio nets should be used at least once during the exercise to test the capability of using these nets to transmit emergency information.   | X | X |

Logistics:

- |  |  |   |   |
|--|--|---|---|
|  | Provide current Unmet Needs Report before exercise. Update as necessary during exercise. | X | X |
|--|--|---|---|

Advisory:

- |    |   |   |   |
|----|---|---|---|
| 1. | State Police will demonstrate capability to provide access control of evacuated areas.  | X | X |
| 2. | Play counties/municipalities should note that State Departments of Agriculture and Environmental Resources will collect food and water samples. | X | X |

ACTUAL AND SIMULATED EVENTS

DEFINITIONS:

1. Simulation - involves identification and utilization of all resource requirements and procedures short of actual employment of resources.
2. Actual - movement of resources and/or physical implementation of decisions.

<u>EVENT</u>	<u>ACTUAL</u>	<u>SIMULATION</u>
<u>NOTIFICATION</u>		
Notify Officials	X	
Notify Staff & Emergency Workers	X	
Public Alert/Notification	X	X
<u>EXTERNAL COMMUNICATIONS</u>		
Communications between County/State, County/Municipal, County/Emergency Workers, County/Facility	X	
<u>EMERGENCY OPERATIONS CENTER</u>		
Activation of EOC	X	
Adequacy of space, comfort	X	
EOC Staffing (adequacy, multiple shifts, competency)	X	X
Internal Information Exchange (message handling, maps, etc.)	X	
Public Official Support and Participation	X	
EOC Security and Access Control	X	
Direction and Control (timely decision making, management, etc.)	X	
Coordination (internal and external, both up & down)	X	
Emerg. Plans (understanding and use, adherence, SOP's)	X	
<u>PUBLIC INFORMATION</u>		
Public Information/Interface with Media	X	
EBS and Canned Messages to Public	X	
Media Center - Use for Media and Accommodation	X	
Rumor Control	X	

<u>EVENT</u>	<u>ACTUAL</u>	<u>SIMULATION</u>
<u>PROTECTIVE ACTION</u>		
Determine status of evacuation resources, to include but not limited to:	X	X
Fuel Supply		
Maintenance Support		
Decontamination Monitoring Teams		
EBS and RACES		
General Support Medical Facilities		
Pickup and Receipt of Homebound Individuals		
Pickup System for People w/o Transportation		
Student Pickup Points		
Reception Centers		
Mass Care/Decontamination Centers		
Evacuation - Decision and Dissemination of Instructions, to Include Notification Techniques	X	X
Activate Reception Center	X	X
Activate Mass Care/Decont. Centers - Expected Population, Supply Sources Known, Long-Term Mass Care Plans	X	X
Reduce Patient Load at Hospitals, Nursing Homes, etc.	X	X
Schools - Decision and Implementation thereof	X	X
Evacuate Prisons, Health Care, Other Private Institutions	X	X
Operation of Pickup Points and Special Transport Problems for <u>Individuals</u> <u>w/o Transport</u> , to Include Homebound Invalids. Bus Company Notification and Operation	X	X
Relocate Government Agencies Outside 10 Mile EPZ		X
Full Mobilization of Evacuation Resources	X	X
<u>EXPOSURE CONTROL</u>		
Dosimetry and Records - Emergency Workers, to Include Farmers, and Evacuation Dose Records and Forms	X	X
Decontamination - Demonstration of Procedures by Monitoring Teams	X	X
KI - Decision for Procurement, Distribution, and Use; Use by Emergency Workers, Invalids: Record Keeping	X	X

<u>EVENT</u>	<u>ACTUAL</u>	<u>SIMULATION</u>
<u>EXPOSURE CONTROL (Cont'd)</u>		
Ingestion Pathway - Identify Samples to be Taken; Decisions on Stored Feed, Food Interdiction; Notification to Food Processors	X	X
Traffic Control and Access Control	X	X
<u>ACCIDENT ASSESSMENT</u>		
Monitoring, Reporting, Projecting, Coordinating for BRP Monitoring Team(s)	X	X
Reporting of Agricultural Sampling Team	X	X
Reporting DER Water Sampling Team	X	X
<u>RECOVERY AND RE-ENTRY</u>		
Recovery and Re-entry will not be played in this exercise. It will be played in a later exercise in the future.		



SECTION 4.0

List of Participating Organizations  
and Action Locations

State EOC

Room E-151, Transportation & Safety Bldg.  
Capital Complex, Harrisburg  
717-783-8150

BRP EOC (Mr. Thomas Gerusky)

16th Floor, Fulton Bldg.  
3rd & Locust Streets  
Harrisburg  
717-787-2480

PEMA Eastern Area EOC

Eastern Area EOC (Robert J. Casto)  
Hamburg Center  
Hamburg, PA 19526  
215-562-3003/3004

PEMA Central Area EOC

Central Area EOC (Joseph L. Dougherty)  
Selinsgrove State Hospital  
Selinsgrove, PA 17870  
717-374-2005

Risk Counties

Luzerne County EOC

Mr. Walt Wint  
Luzerne County Civil Defense  
Court House  
Wilkes-Barre, PA 18711-1001  
717-825-1500

Columbia County EOC

Mr. Carl J. Sevison  
Columbia County Emerg. Mgmt. Agency  
Court House, W. Main Street  
Bloomsburg, PA 17815  
717-784-6300

Luzerne County Public Information

Michael Cotter  
Asst. Budget and Personnel Mgr./PIO  
Court House  
Wilkes-Barre  
717-825-1511

Columbia County Public Information

Court House  
Bloomsburg, PA  
717-784-5500

Risk Municipalities

EOC

Berwick Borough  
Mifflin Township  
South Center Township  
Butler Township  
Shickshinny Borough  
Sugarloaf Township  
Police Department  
Fire Department

} Information not available at time of printing.

Risk Hospitals

Luzerne County

Nanticoke State General Hospital  
North Washington Street  
Nanticoke  
771-735-5000  
Safety Director: Sam Kreluski

Columbia County

Berwick Hospital  
701 East 16th Street  
Berwick  
717-752-4551  
Contact: Robert Robbins

Risk School Districts

Luzerne County

Intermediate Unit #18 is control.  
Northwest School Dist. & Shickshinny  
Elementary School are players.  
Contact: Kevin O'Connor, EOC

Columbia County

Berwick Area School District  
5th & Market Streets  
Berwick  
Contact: David Force  
717-759-2257 (office)  
NOTE: Separate scenario played  
out of sequence.

Luzerne & Columbia

Reception Center  
Mass Care/Decontamination Center  
Decontam. Station, Emergency Workers } Information not available at time of printing.

Area Headquarters and Support Counties

Central Area Headquarters and Union County  
Eastern Area Headquarters and Schuylkill County  
Wyoming and Luzerne Counties' Support Activities  
Montour (School Support Role)  
Northumberland County  
Columbia County Support Activities  
EOC  
Reception Center  
Mass Care/Decontamination Center } Information not available at time of printing.

Host School for Student Pickup for Danville School District

Access Control Points and Traffic Control Points

Pennsylvania State Police  
  
Water Sampling Team  
Food Sampling Team  
BRP Monitoring Teams  
BRP Mobile Laboratory } Information not available at time of printing.

RACES Stations

See each County EOC for specific locations on day of exercise.

Susquehanna Plant

Mr. Charles R. Wike, Jr.  
Susquehanna Steam Electric Station  
Pennsylvania Power & Light Company  
Berwick, PA 18603  
717-542-2181, Ext. 3233

Off-Site Fire Co. Support

Shickshinny Fire Co.  
Shickshinny, PA

Susquehanna EOF

Emergency Operations Facility  
T438  
Salem Township

Media Operations Center

Berwick YMCA  
3rd & Vine Streets  
Berwick

PSP in Support of Plant Scenario  
PSP's Access Control Points (ACP's)  
and Traffic Control Points (TCP's)  
County Post Location Troop

} Information not available at  
time of printing.

Table 4-1

Susquehanna Emergency Exercise  
Participating PP&L Organizations

CONTROL ROOM & TSC

SSES Plant Staff  
Nuclear Training

EOF

Construction - Susquehanna Site  
Project Management - Susquehanna Site  
Nuclear Plant Engineering  
Nuclear Quality Assurance  
SSES Plant Staff  
Nuclear Support  
Nuclear Safety Assessment  
Nuclear Operations  
Nuclear Training

GENERAL OFFICE

Nuclear Project Management  
Nuclear Administration  
Project Management - Susquehanna - Allentown  
Nuclear Plant Engineering  
Nuclear Licensing  
Nuclear Planning & Controls

MOC

Special Office of the President - Susquehanna  
Corporate Communications  
SSES Plant Staff  
Nuclear Licensing

OFF-SITE TEAMS

Susquehanna Division  
Central Division  
Hazleton Chemical Laboratory

OTHERS

System Operating  
Lehigh Division  
Legal  
Public Affairs  
Transportation  
Corporate Security

SECTION 5.0

Locations, Addresses, and Maps

A. Commonwealth of Pennsylvania

1. PEMA State EOC  
RM, B-151, T&S Bldg.  
Capitol Complex, Harrisburg  
(See Map No. 3)
2. DER/BRP  
Operation Center  
16th Floor  
Fulton Bank Building  
3rd and Locust Streets  
Harrisburg, PA  
(See Map No. 3)

B. Luzerne County

1. County EOC  
Luzerne County Office of Civil Defense  
Luzerne County Court House  
Wilkes-Barre, PA  
(See Map No. 4)
2. County Public Information  
Asst. Budget & Personnel Mgr./PIO  
Court House  
Wilkes-Barre, PA  
(see Map No. 4)

C. Columbia County

1. County EOC  
Columbia County Emergency Management Agency  
Columbia County Court House  
Bloomsburg, PA  
(See Map No. 5)
2. Court House  
Bloomsburg, PA  
(See Map No. 5)
3. Berwick Area School District  
5th & Market Streets  
Berwick  
(See Map No. 6)

D. Pennsylvania Power & Light Company

1. Technical Support Center (TSC) - See Figure 1 for functional layout  
SSES  
(See Map No. 2)
2. Emergency Operations Facility (EOF) - See Figure 2 for functional  
layout SSES  
(See Map No. 2)
3. Media Operations Center (MOC) - See Figure 3 for functional layout  
Berwick YMCA  
Third Street  
Berwick, PA  
(See Map No. 6)

E. Nearby Hotels and Motels - (See Attachment 1 to this section)

Nearby Hotels/Motels

Near Site

Hotel Colone	300 Market St., Berwick	759-0321
Riverview Motel	Rt. 11, R.D. 1, Berwick	759-9384

Near I-80, West of Site (30-45 Min. Drive)

Sheraton Danville Inn	I-80 & Rt. 54, Danville	275-5510
Red Roof Inn	I-80 & Rt. 54, Danville	275-7600
Holiday Inn	Rt. 54, Danville	275-4640
Hotel Magee	20 W. Main St., Bloomsburg	784-3200
Howard Johnson's	I-80 & Rt. 54, Danville	275-5100
Quality Inn Buckhorn Plaza	R.D. 8, Bloomsburg	784-5300

Near Airport (30-45 Min. Drive)

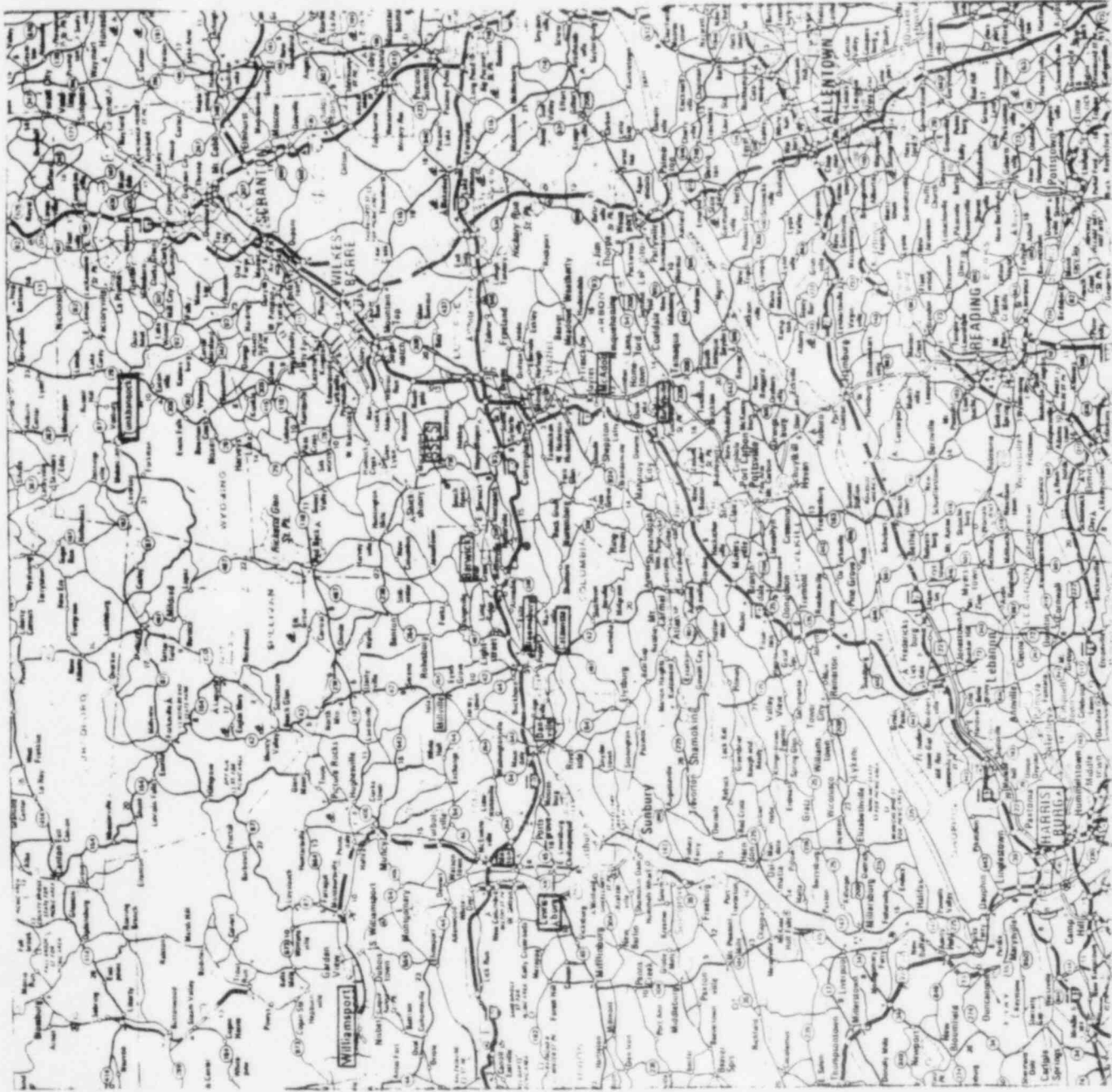
Genetti Best Western Motor Inn	Market & Penna. Ave., Wilkes-Barre	823-6152
Holiday Inn	Rt. 315, Wilkes-Barre	824-8901
Howard Johnson's	Rt. 312, Wilkes-Barre Scranton Hwy., Pittston	654-3301
Master Host Inn of Wilkes-Barre	500 Kidder St., Wilkes-Barre	824-2411
The Woodlands, An Inn	Rt. 315, Plains Twp., Wilkes-Barre	824-9831

Near I-80, I-81 Junction (30-40 Min. Drive)

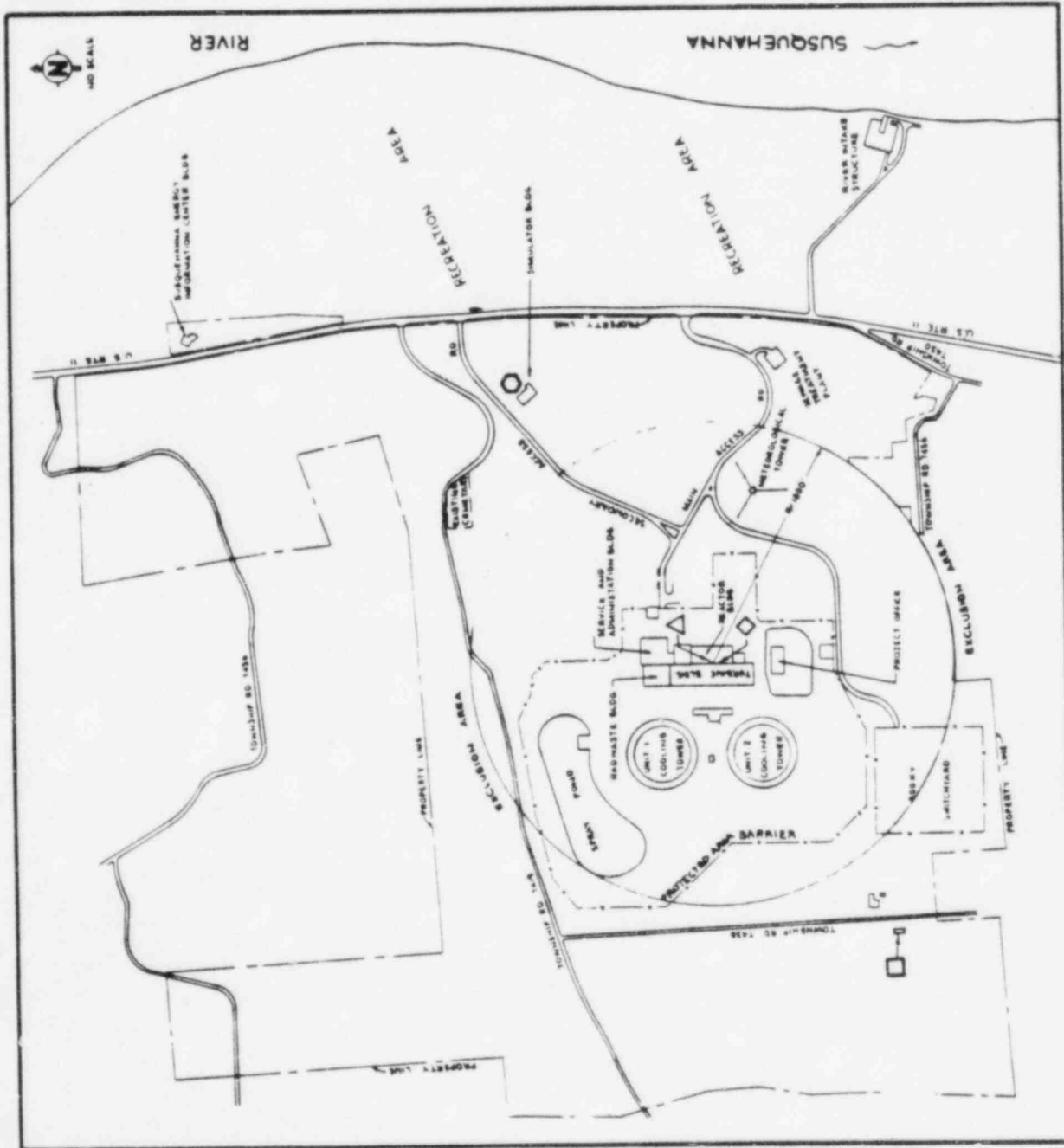
Best Western Genetti Motor Lodge	Rt. 309 North, Hazleton	454-2494
Holiday Inn	Rt. 309 North, Hazleton	455-2061
Look-Out Motor Lodge	Berwick-Hazleton Hwy., Conyngham	788-4131

SUSQUEHANNA STEAM ELECTRIC STATION  
EXERCISE MANUAL

GENERAL AREA MAP  
MAP NO. 1







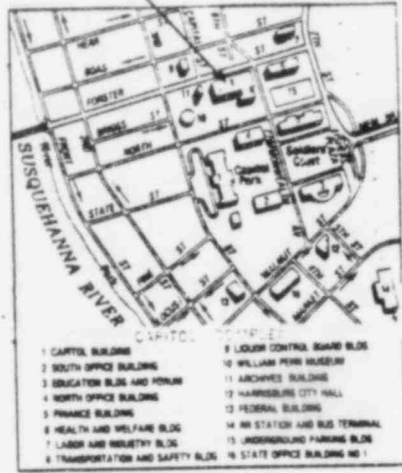
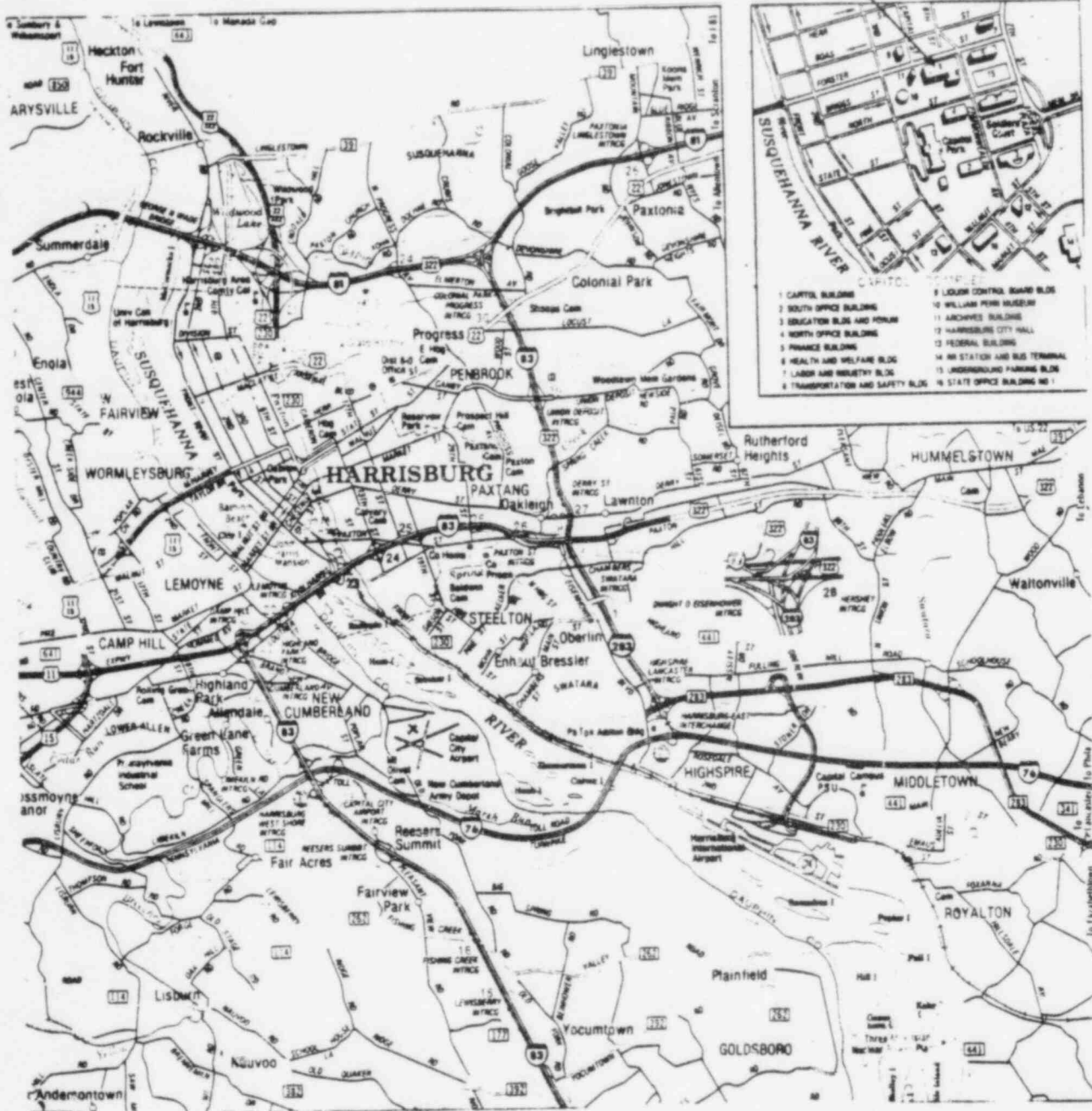
- △ - TECHNICAL SUPPORT CENTER
- - EMERGENCY OPERATIONS FACILITY
- ◇ - OPERATIONAL SUPPORT CENTER

SUSQUEHANNA STEAM ELECTRIC STATION  
 UNITS 1 AND 2  
 EXERCISE MANUAL

---

RELATIVE LOCATIONS  
 OF THE  
 EMERGENCY RESPONSE FACILITIES  
 MAP NO. 2

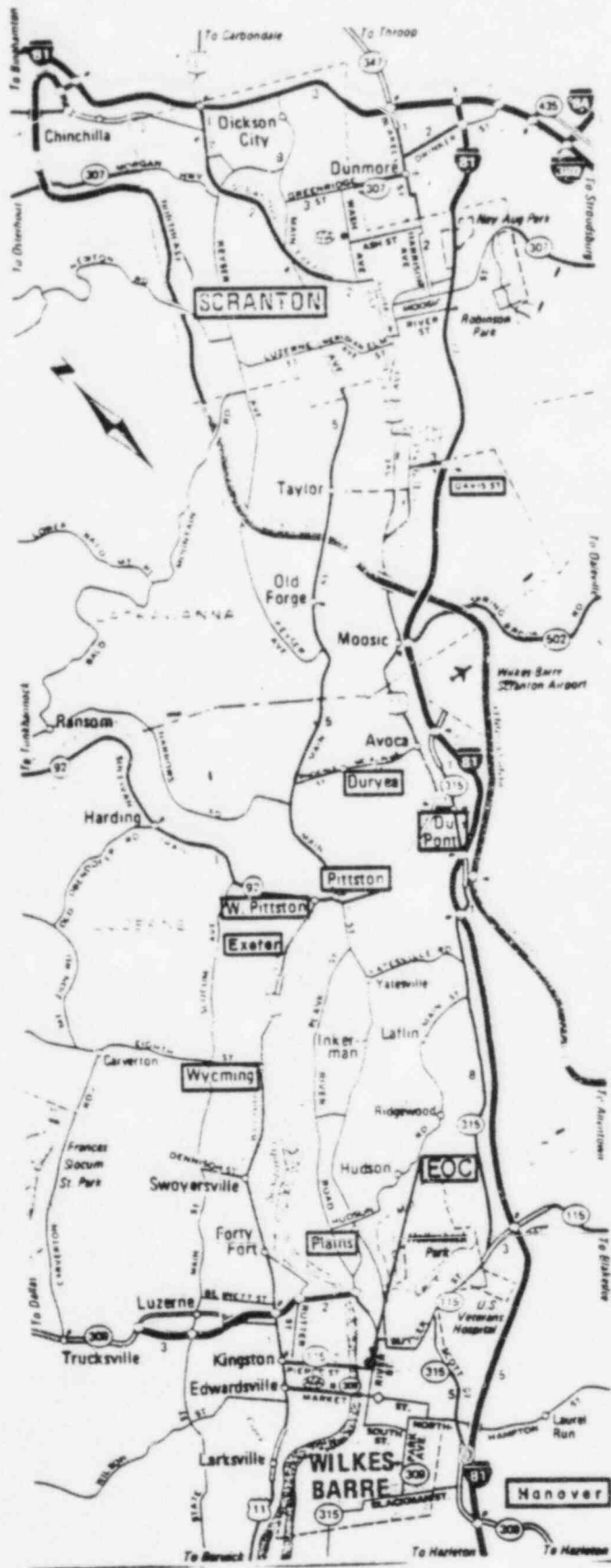
STATE EOC



SUSQUEHANNA STEAM ELECTRIC STATION  
EXERCISE MANUAL

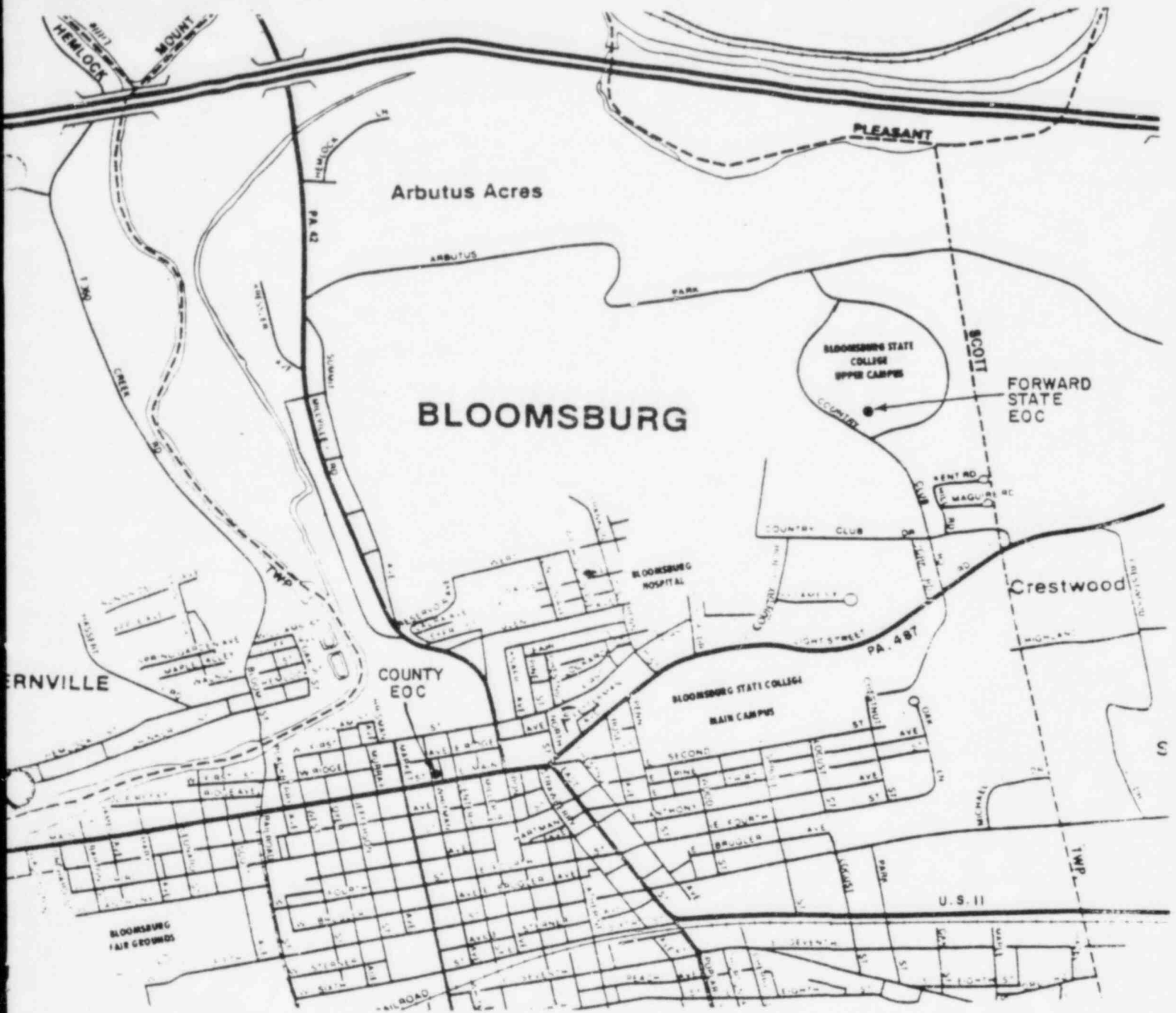
---

HARRISBURG AND VICINITY  
MAP NO. 3



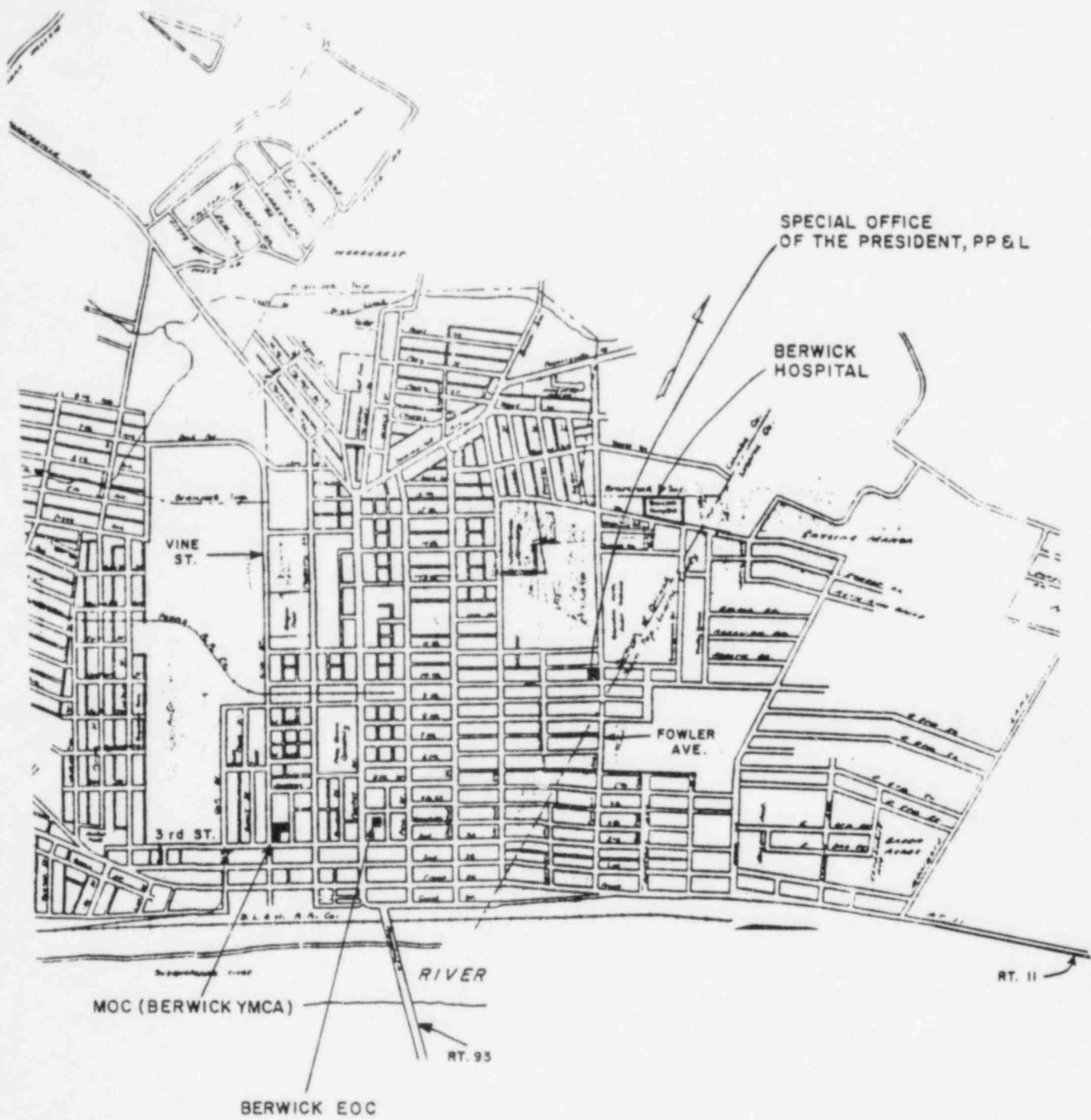
SUSQUEHANNA STEAM ELECTRIC STATION  
 EXERCISE MANUAL

SCRANTON  
 WILKES - BARRE  
 AREA  
 MAP NO. 4



SUSQUEHANNA STEAM ELECTRIC STATION  
 UNITS 1 AND 2

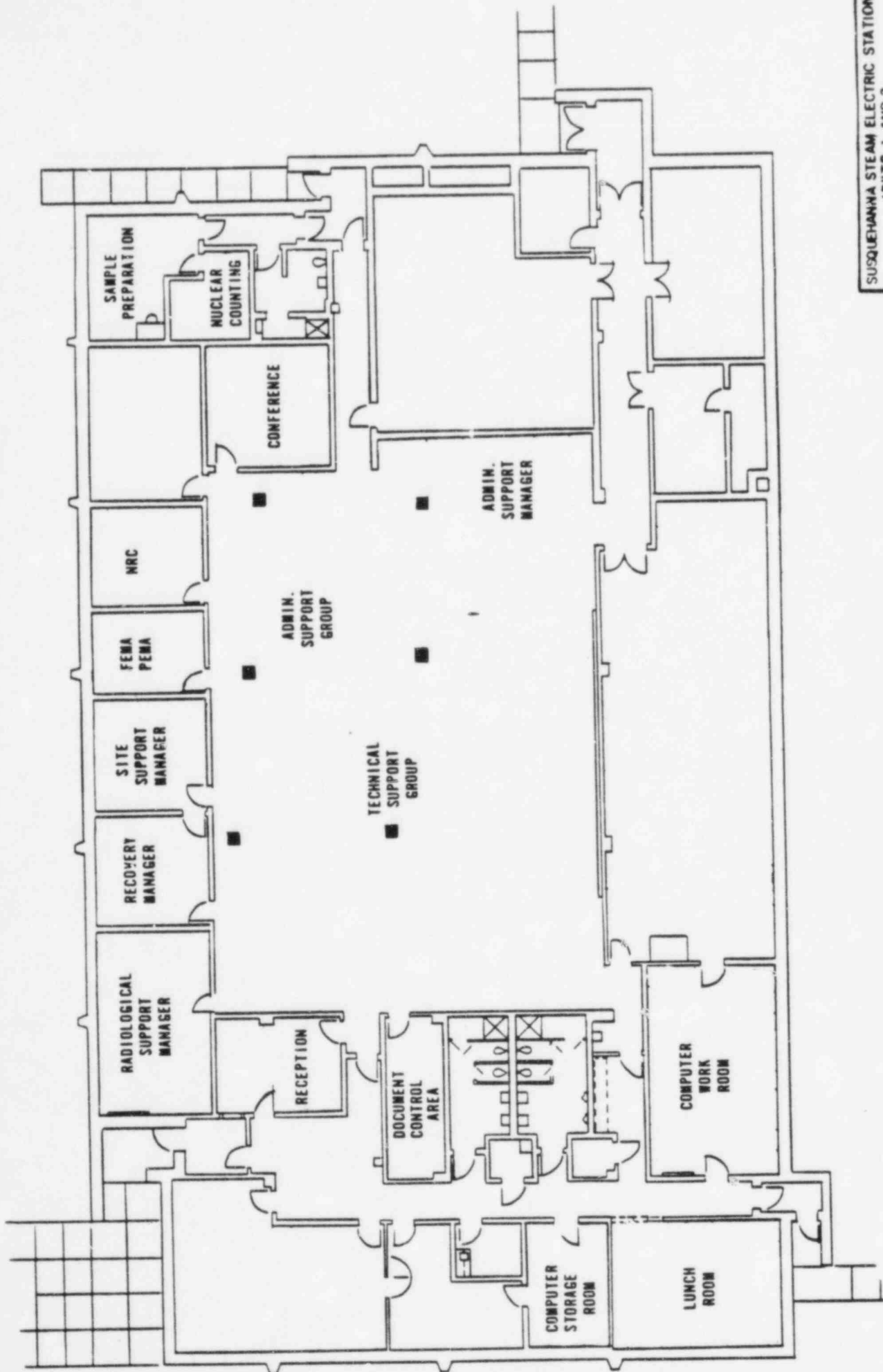
BLOOMSBURG AREA  
 MAP NO. 5



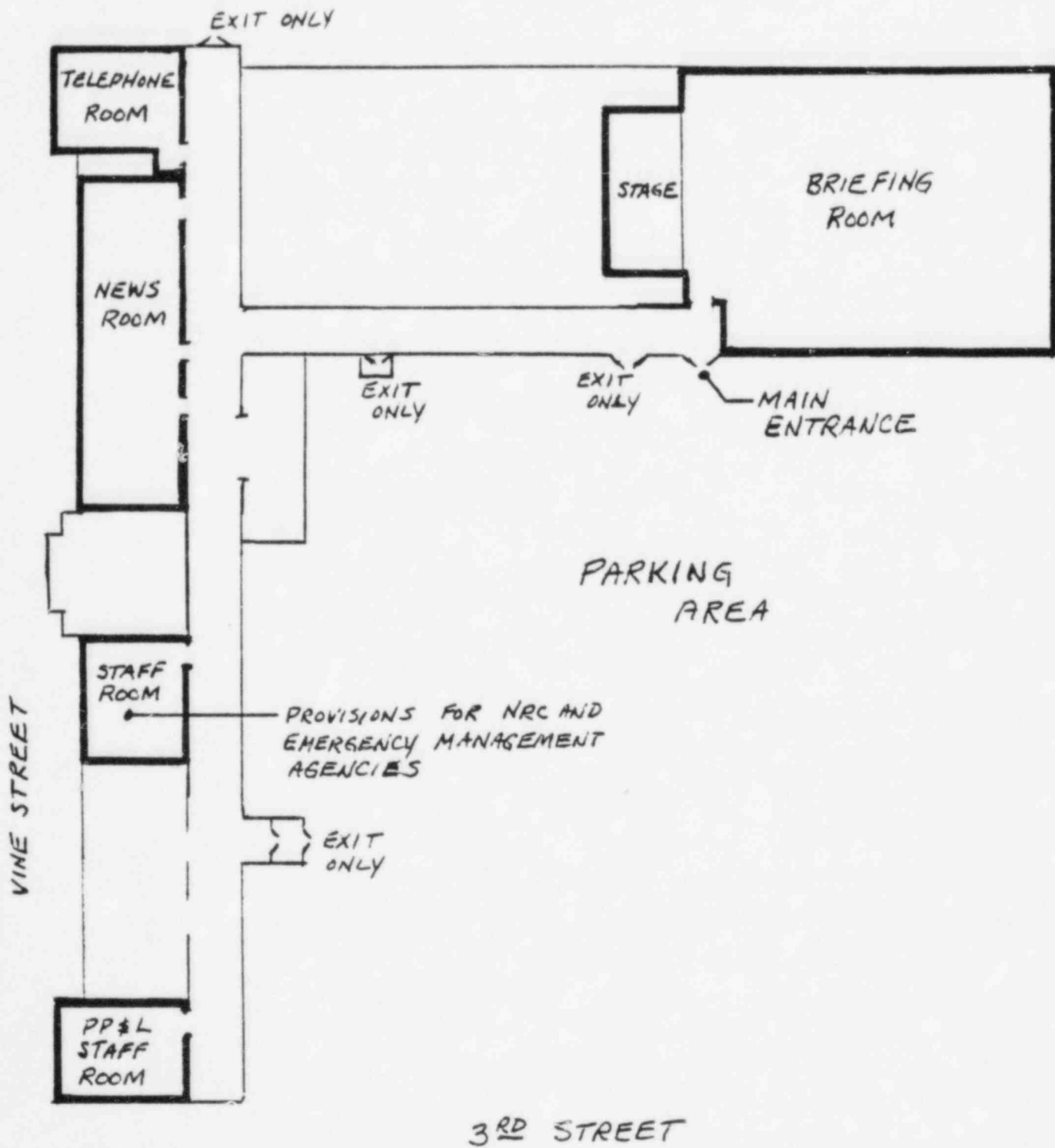
SUSQUEHANNA STEAM ELECTRIC STATION UNITS 1 AND 2
BERWICK AREA MAP NO. 6







SUSQUEHANNA STEAM ELECTRIC STATION  
 UNITS 1 AND 2  
 EMERGENCY OPERATIONS FACILITY  
 FLOOR PLAN  
 Figure 2



MEDIA OPERATIONS CENTER  
 FIGURE 3





Table 6-1

Controllers for  
Susquehanna Steam Electric Station

1982 FEMA/NRC Observed Exercise

<u>POSITION</u>	<u>NAME</u>
BRP Headquarters, Harrisburg	Stuart Levin
State EOC	Bill Whitesel Keith Ashley
At Large	Marsh Johnson Adolph Belser
 <u>Columbia County</u>	
County EOC (?)	Carl Kuehn Ron Smith
Berwick Borough	Bill Thorpe
Mifflin Township	Guy Sherry, Anita Davis
South Center Township	Bob Foor
 <u>Luzerne County</u>	
County EOC (2)	Ralph Hippert B. J. Highfield
Butler Township	Phil Robbins
Shickshinny Borough	Marion Yoder
Sugarloaf Township	Harold Sherman
 <u>Area Headquarters and Support Counties</u>	
Central Area Headquarters and Union County	Don Taylor
Eastern Area Headquarters and Schuylkill County	Dan Foor
Wyoming and Luzerne Counties' Support Activities	Frank Ferenchak
Montour (School Support Role)	Ted Charney
Northumberland County	Ted Charney
Columbia County Support Activities	Ted Charney

NOTE 1: The Susquehanna exercise's operational procedures will differ from the Beaver Valley full-scale exercise in that the PEMA and state staff roles will be modified so that a PEMA control group will simulate the entire PEMA staff and 14 state staff agencies. Five state staff agencies (DMA, PSP, PennDOT, Agriculture, and Health) will send response teams to the State EOC. BRP will play with some minor administrative modifications to its assessment center staff and its field monitoring teams. The two risk Counties of Columbia and Luzerne, plus their representative risk municipalities, and five

support counties, will play full-scale. PEMA will field a full complement of observer/controllers. Central and Eastern Area Headquarters will be activated with a full response team staff.

NOTE 2: The problem play will begin about noon on Wednesday, 23 March, will escalate through the various emergency stages through the afternoon and evening hours, and will terminate about 9:00 p.m.

NOTE 3: PEMA personnel whose names do not appear on the State EOC assignment list or on the controller assignment sheet may be given an assignment prior to the exercise. If not so designated by the time of the exercise, individuals may depart the State EOC at the close of the normal duty day.

Table 6-2

Reference Structure

CHIEF REFEREE

CHIEF RAD REFEREE

Site Boundary Mon. Ref.  
Offsite Mon. Refs.  
In-Plant Team Refs.  
TSC Rad. Refs.  
EOF Rad. Refs.

CONTROL RM REF

Control Room Communications  
Ref.  
Dataman

TSC REF

TSC Tech Ref.  
TSC Communication Ref.  
Dataman

EOF REF

EOF Tech Ref.  
EOF Communication Ref.  
Dataman

GO REF

GO Tech Ref.  
Mock CMC

MOC REF

MOC Media Ref.

Security Team Refs.  
In-Plant Team Refs.  
Fire Ref.  
Mock NRC

Susquehanna Emergency Exercise Referees

<u>POSITION</u>	<u>DRILL LOCATION</u>	<u>NAME</u>	<u>ASSOCIATION</u>
Chief Referee	TSC	Ed Heckman	PP&L
Control Room Referee	Control Room	Gary Boughman	PP&L
Control Room & TSC Commun. Referee	Control Room & TSC	Monica Miller	PP&L
TSC Referee	TSC	Fred Eisenhuth	PP&L
EOF Referee	EOF	Jim Minneman	PP&L
G.O. Referee	G.O.	Bill Dyer	PP&L
MOC Referee	Spc Off/MOC	John Levitski	PP&L
Chief Rad Referee	Floating	Laurie Whittenberger	PP&L
EOF Rad Referees	EOF	Bernard Graham Mike Buring	PP&L PP&L
TSC Rad Referee	TSC	Dave Miller	PP&L
EOF Tech Referee	EOF	Dave Zaprazny	PP&L
EOF Communications Referee	EOF	Chuck Kalter	PP&L
G.O. Tech Referee	G.O.	Jason Saranga	PP&L
TSC Tech Referee	TSC	Joseph Bognet	PP&L
Mock NRC Referee	S&A	Tom Oldenhage	PP&L
Mock Media Referees	MOC	Lynne Kuczynski Lynn Patnaude	PP&L PP&L
Mock CMC Referee	G.O.	Tom Preston	PP&L
Fire Referees	With team	Steve Walter Herb Dressler	PP&L PP&L
Site Boundary Monitoring Referee	With team	Jim Lex	PP&L
Mock System Operations	G.O.	John Ullo	PP&L

<u>POSITION</u>	<u>DRILL LOCATION</u>	<u>NAME</u>	<u>ASSOCIATION</u>
Datamen	EOF	Steve Pindale	PP&L
	TSC	Greg Benner	PP&L
	Control Room	Ken Dearth	PP&L
Security Team Referees	With team	Frank Malek	PP&L
		Leroy Deets	PP&L
		George Gallagher	PP&L
Off-Site Monitoring Referees	With team	Ed Brignole	PP&L
		Jerry Demko	PP&L
		Earl Houser	PP&L
		John Ianotti	PP&L
		Bob Kurtz	PP&L
		Ken Staber	PP&L
Team Monitoring Referees	With team	Roland Moor	PP&L
		Dave Godshalk	PP&L
		Ken DeAngelis	PP&L
		Bob Hoopes	PP&L
		Ron Swetnam	Consultant
		William Barley	Consultant
		Virgil Parola	Consultant
		Al Richard	Consultant

SECTION 7.0 - REFERENCES

List of Plans and Key Procedures  
To Provide Appropriate Evaluation Criteria  
For the Susquehanna Steam Electric Station

1. Columbia County Emergency Management Agency Radiological Emergency Response Plan for Incidents at the Susquehanna Steam Electric Station.
2. Luzerne County Emergency Management Agency Radiological Emergency Response Plan for Incidents at the Susquehanna Steam Electric Station.
3. Commonwealth of Pennsylvania Disaster Operations Plan, Annex E, "Fixed Nuclear Facility Incidents."
4. Pennsylvania Emergency Management Agency Standard Operating Procedures, State Emergency Operations Center.
5. Pennsylvania Emergency Management Agency Duty Officers Manual.
6. Pennsylvania Power & Light Company Susquehanna Steam Electric Station Emergency Plan.
7. Susquehanna Steam Electric Station Emergency Plan Implementing Procedures.

## SECTION 8.0

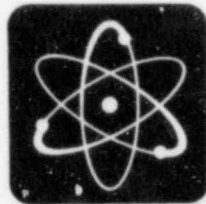
### List of Acronyms

The following acronyms are used in this exercise manual:

BRP	-	Bureau of Radiation Protection
DER	-	Department of Environmental Resources
EBS	-	Emergency Broadcast System
EMA	-	Emergency Management Agency
EMC	-	Emergency Management Coordinator
EOC	-	Emergency Operations Center
EOF	-	Emergency Operations Facility
FEMA	-	Federal Emergency Management Agency
GO	-	General Office, PP&L
KI	-	Potassium Iodide
MOC	-	Media Operations Center
NRC	-	Nuclear Regulatory Commission
PEMA	-	Pennsylvania Emergency Management Agency
PP&L	-	Pennsylvania Power & Light Company
RACES	-	Radio Amateur Communication Emergency System
SSES	-	Susquehanna Steam Electric Station
TLD	-	Thermoluminescent Dosimeter
TSC	-	Technical Support Center

MM:lec  
P4-6





# **Exercise Manual**

for the

Full Scale NRC/FEMA  
Observed Emergency  
Preparedness Exercise

March 23, 1983

**PP&L**