

70-1257

SIEMENS

May 18, 1994

U.S. Nuclear Regulatory Commission
Attn: Mr. Robert C. Pierson, Chief
Licensing Branch
Division of Fuel Cycle Safety and Safeguards, NMSS
Washington, DC 20555

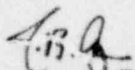
Dear Mr. Pierson:

- Re: 1. Letter, M. Tokar to L.J. Maas, "Relocation and Upgrade of UF₆ Cylinder Storage and Handling Facility (TAC No. L30541)," dated, November 10, 1993
2. Letter, M.T. Adams to L.J. Maas, "Analytical Laboratory Expansion (TAC No. L30551)," dated March 29, 1994

Enclosed, per instructions in the referenced letters are revised pages 10-53, 10-55, 10-66, 10-70, 10-70a, and 10-84 for Siemens Power Corporation's (SPC's) current NRC license and pages 10-56, 10-68, 10-69, 10-73, 10-74, and 10-90 for the renewal application. These pages are figures showing the SPC site plan and the UO₂ Building and have been updated to include the analytical laboratory addition and the relocated UF₆ handling and storage facility.

If you need further information, please call me at 509-375-8663.

Very truly yours,



James B. Edgar
Staff Engineer, Licensing

JBE:pm

2
9405270146 940518
PDR ADOCK 07001257
C PDR

NF12 /

SHEETS AFFECTED BY REVISION	SHEET	1	2	3	4	5	6	7	8	9	10	11	12	13	14	15	16	17	18	19	20	21	22	23	24	25	26	27	28	29	30	31	32	33	34	35
REV	11	6	6	7	8	6	6	7	7	5	5	3	2	3	2	1	3	11	2	2	3	3	1	1	7	1	2	4	1	3	1	1	1	0	0	

EMF-2, Rev.30
Page 10-53
May 18, 1994

ANSTEC APERTURE CARD

Also Available on Aperture Card

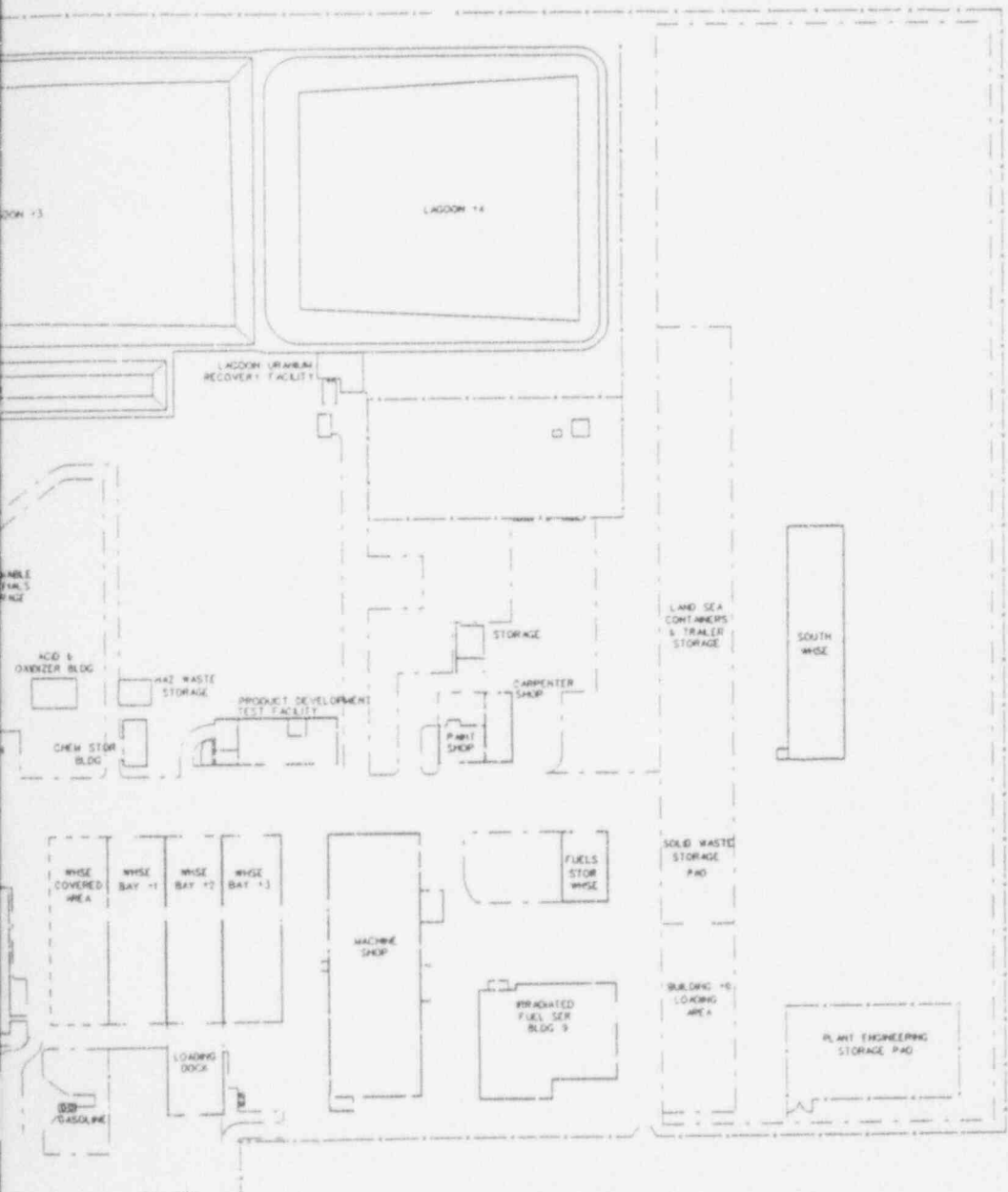


Figure II-10.1

9405270146-01

NO.	DATE	DESCRIPTION	BY
11	07-27-94	PROBE LOCATIONS, 33 SHEETS WAS, 34 SHEETS LAG, SOUTH WAREHOUSE, WARE SHOP APPEAL & TOUCH, ADDED LF, CYLINDER STORAGE WAREHOUSE, ANALYTICAL	11
10	02-28-93	ADDED SOUTH STORAGE PAD	10
9	01-29-92	ADDED POET EXPANSION	9
8	08-08-91	COMPRESSOR BUILDING (1) REVISED ADDED TRUCK LOADING AREA (2) ADDED NEW (3) REVISED NAMES (4) ADDED LF & CYLINDER STORAGE PAD	8
7	01-20-90	REDRAWN ON CADD AS-BUILT	7

Siemens Power Corporation - ND
Advanced Nuclear Fuels Corporation

SCALE: NONE
DATE: 10-30-85
DRAWN BY: BRP/EP
CHECKED BY: T.M. BE
APPROVED BY: T.M. BE

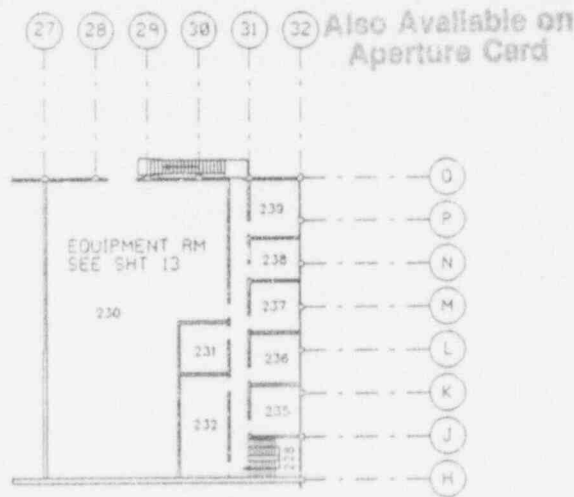
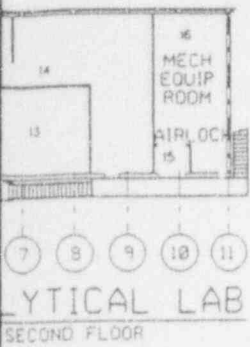
PLANT EQUIPMENT LAYOUT SITE PLAN

EMF-607,590

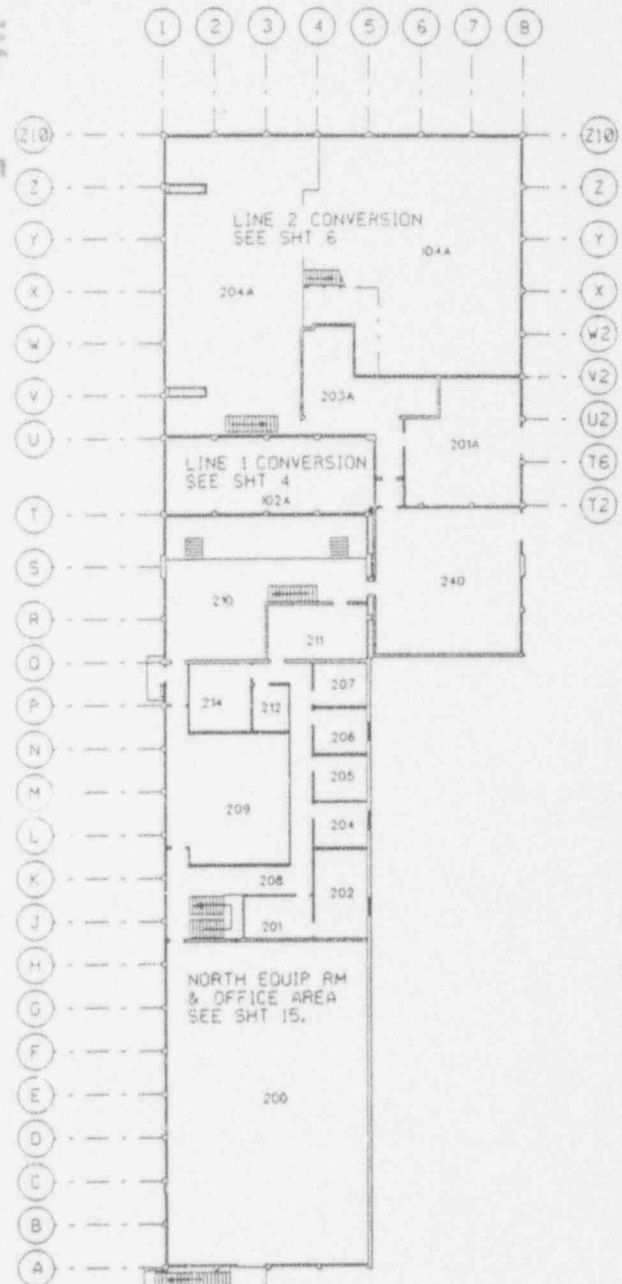
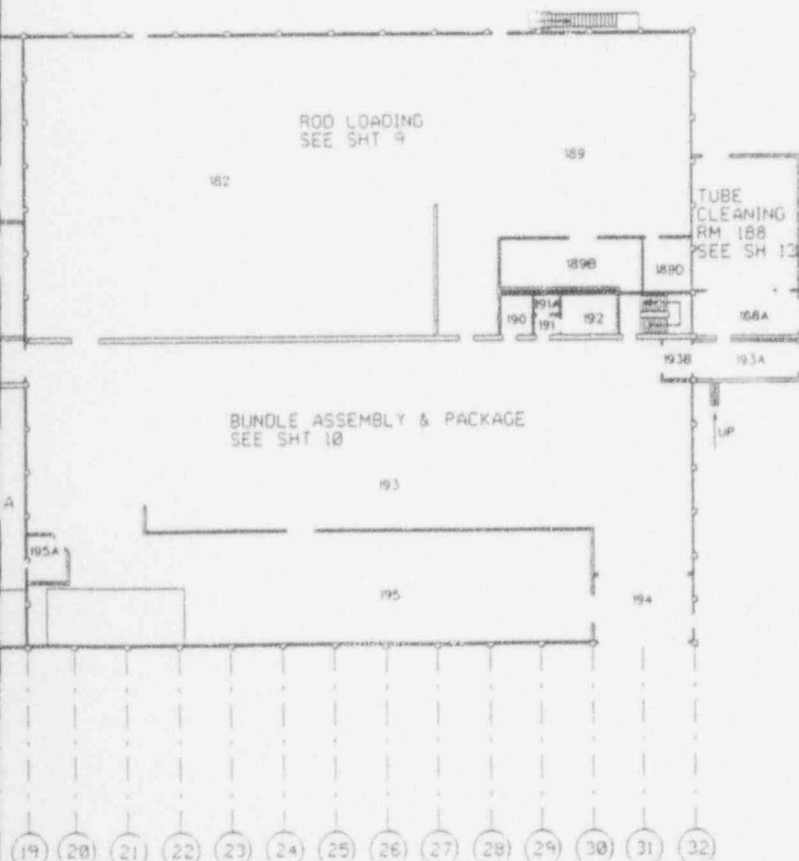
3050'S 1A & H1	ARCHITECTURAL & STRUCTURAL 1A & H1
DATE: 05-18-94	REV: 11
REFERENCE DRAWING TITLE	

INTERGRAPH (CADD) VER 4.4.0

ANSTEC APERTURE CARD



UO₂ BUILDING - SOUTH END
 SECOND FLOOR

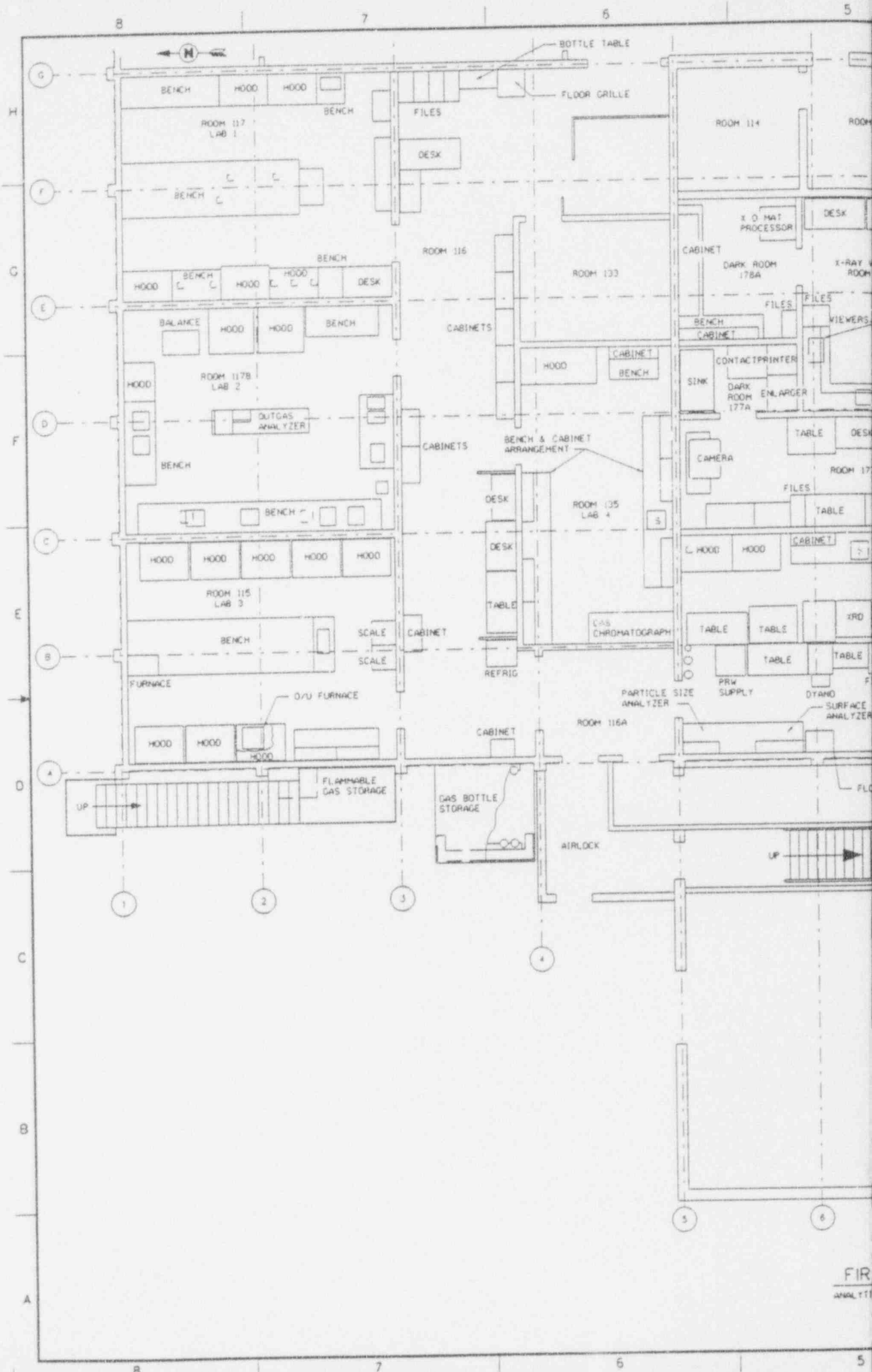


UO₂ BUILDING - NORTH/CONVERSION
 SECOND FLOOR

Figure 11-10.3

9405270146-02

REV	NO	DATE	DESCRIPTION	BY
6		2-24-94	35 SHEETS WAS 34 SHEETS ADDED ANALYTICAL LAB (BOTH FLOORS)	
5		5-25-93	WAS NOT TO 1/8" = 1' SCALE	
4		12-15-92	ADDED ROOM NUMBERS	
3		10-08-92	REMOVED WALL & RENUMBERED ROOMS	
2		5-11-92	REDRAWN ON CADD AS-BUILT	
1				
APPROVED / DRAWN / REVISION DESCRIPTION / REV				
Siemens Power Corporation - ND Advanced Nuclear Fuels Corporation				
SCALE: 1/16" = 1'		NO		
PROJECT NO: 118001		REV		
DATE: 10-30-93		BY: BISHOP		
DRAWN: 2-18-87		CHK: JHF		
APPROVED: 1-14-88		REV: HBY		
DATE: 1-14-88		BY: SCB		
NEXT USED ON:		PROJECT NO:		
EMF-607.590				REV: 2
				SHEET: 35

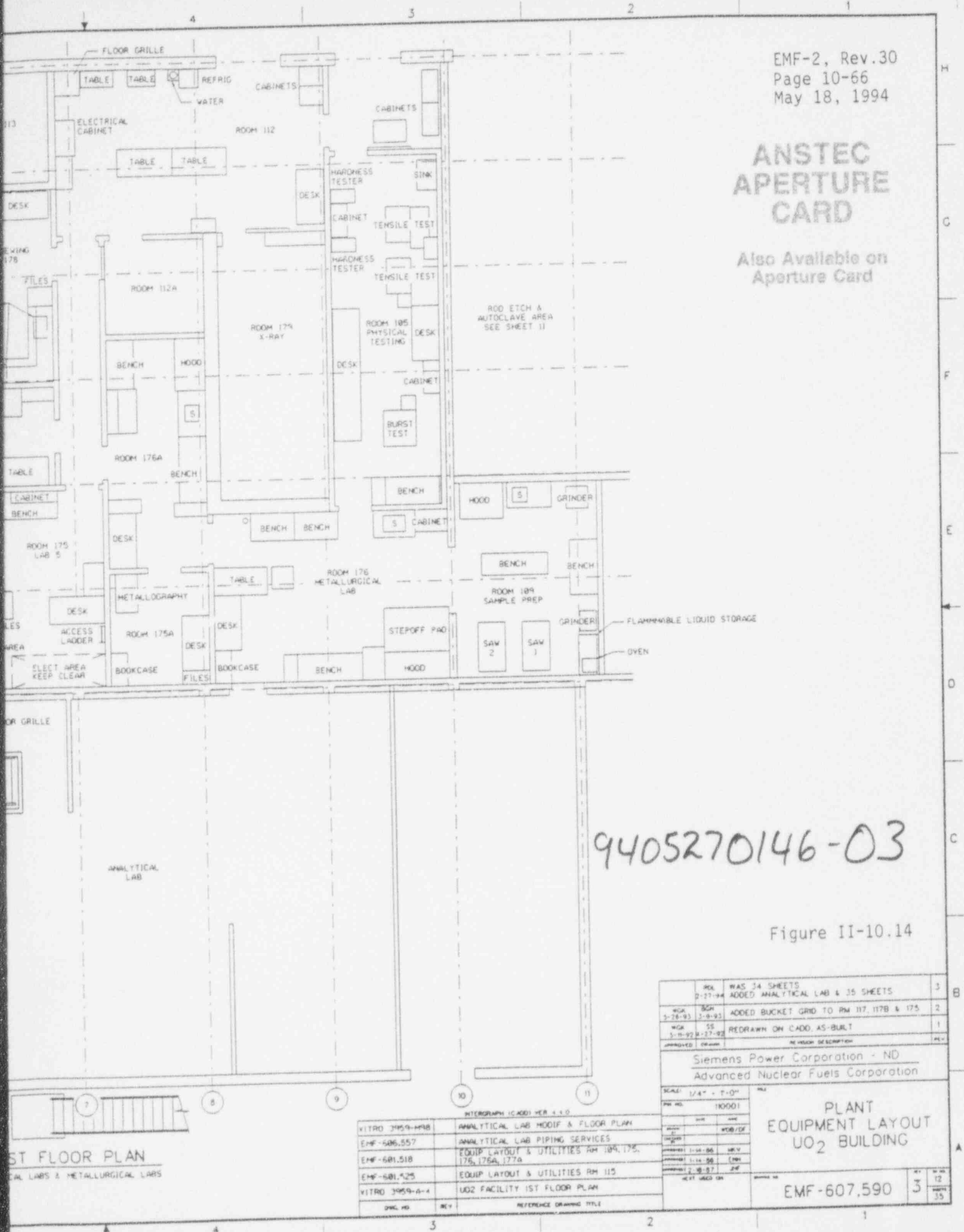


FIR
ANAL 111

EMF-2, Rev.30
 Page 10-66
 May 18, 1994

ANSTEC APERTURE CARD

Also Available on
 Aperture Card



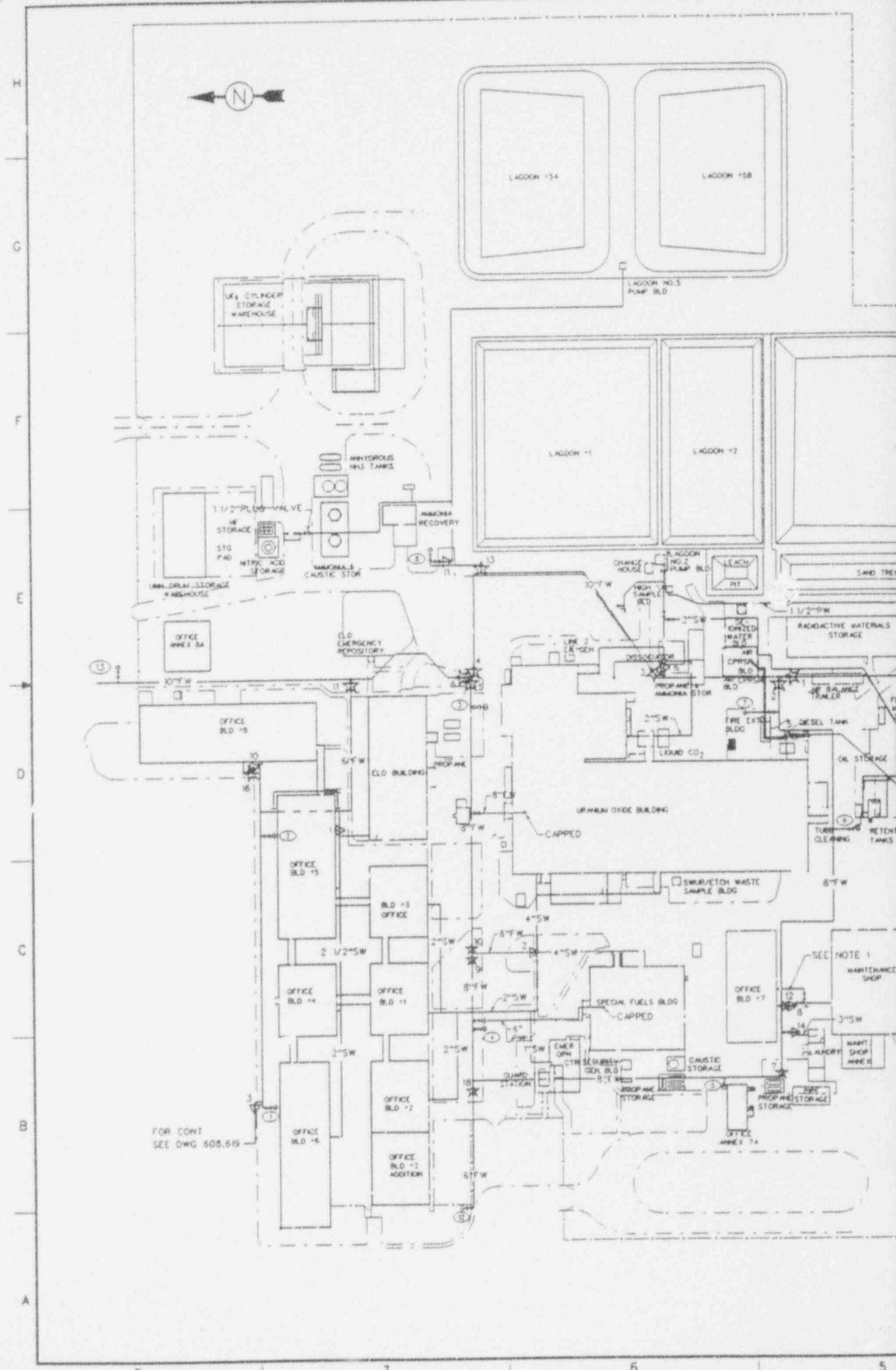
9405270146-03

Figure II-10.14

REV	DATE	DESCRIPTION	BY
1	2-27-94	WAS 34 SHEETS ADDED ANALYTICAL LAB & 35 SHEETS	3
2	3-28-93	ADDED BUCKET GRID TO RM 117, 117B & 175	2
3	5-11-92	REDRAWN ON CADD AS-BUILT	1
4	2-27-92		
APPROVED: [Signature]			
Siemens Power Corporation - ND Advanced Nuclear Fuels Corporation			
SCALE:	1/4" = 1'-0"		
PROJECT NO.	10001		
DATE	DATE	DATE	DATE
1-14-86	REV V	1-14-86	REV V
2-9-87	REV V	2-9-87	REV V
NEXT ISSUE ON		DATE	
PLANT EQUIPMENT LAYOUT UO2 BUILDING		EMF-607,590	
REV	DATE	DESCRIPTION	BY
3	12-12-93		35

1ST FLOOR PLAN
 ANALYTICAL LABS & METALLURGICAL LABS

DATE	BY	DESCRIPTION
VITRO 3959-A-4		ANALYTICAL LAB MODIF & FLOOR PLAN
EMF-606,557		ANALYTICAL LAB PIPING SERVICES
EMF-601,518		EQUIP LAYOUT & UTILITIES RM 109, 175, 176, 176A, 177A
EMF-601,525		EQUIP LAYOUT & UTILITIES RM 115
VITRO 3959-A-4		UO2 FACILITY 1ST FLOOR PLAN
DATE	BY	REFERENCE DRAWING TITLE



ANSTEC APERTURE CARD

EMF-2, Rev.30
Page 10-70
May 18, 1994

Also Available on Aperture Card

LEGEND

- ▽ WATER METERS**
- *1 FOR ELO, OFFICE BLDGS 4, 5 & 8
 - *2 FOR UO2 SPECIAL FUELS, OFFICE BLDGS 1, 2 & 3
 - *3 FOR NORTH LAND SCAPING
 - *4 SPARE METER NO.
 - *5 FOR SOUTH UO2 COOLING TOWER, COMPRESSOR HOUSE & WAREHOUSE
 - *6 FOR LAGOONS & EYE WASHERS
 - *7 FOR FCTF BUILDING
 - *8 FOR MAINTENANCE & OFFICE BUILDING 7
 - *9 FOR WAREHOUSE, MACHINE SHOP & CARPENTER SHOP
 - *10 FOR OFFICE BUILDING 8
 - *11 FOR AMMONIA RECOVERY FACILITY
 - *12 FOR LAGOON URANIUM RECOVERY FACILITY
 - *13 FOR IFS BUILDING
 - *14 FOR LAUNDRY

- ☆ WAFR SHUTOFF WATER VALVE NO'S**
- *1-7, 9 & 10 ON MAIN LINE WITH POST INDICATORS
 - *8 FEEDS FCTF, MACHINE SHOP, CARPENTER SHOP, CHEM STORAGE & ACID/OXIDIZERS BLDG
 - *11 FEEDS ELO, OFFICE BUILDINGS 4, 5, 6 & 8
 - *12 FEEDS MAINTENANCE & OFFICE BUILDING 7
 - *13 FEEDS AMMONIA RECOVERY FACILITY
 - *14 FEEDS FIRE HYDRANT FOR FUELS STORAGE, WAREHOUSE AND IFSB
 - *15 FEEDS FIRE HYDRANT & LUR FACILITY
 - *16 WATER CONTROL VALVE SPRINKLER SYSTEM FOR BUILDING 8 WITH POST INDICATORS
 - *17 FEEDS WAFR USE SPRINKLER SYSTEM
 - *18 FEED HYDRANT @ OFFICE BUILDING 2A

VALVE LIST

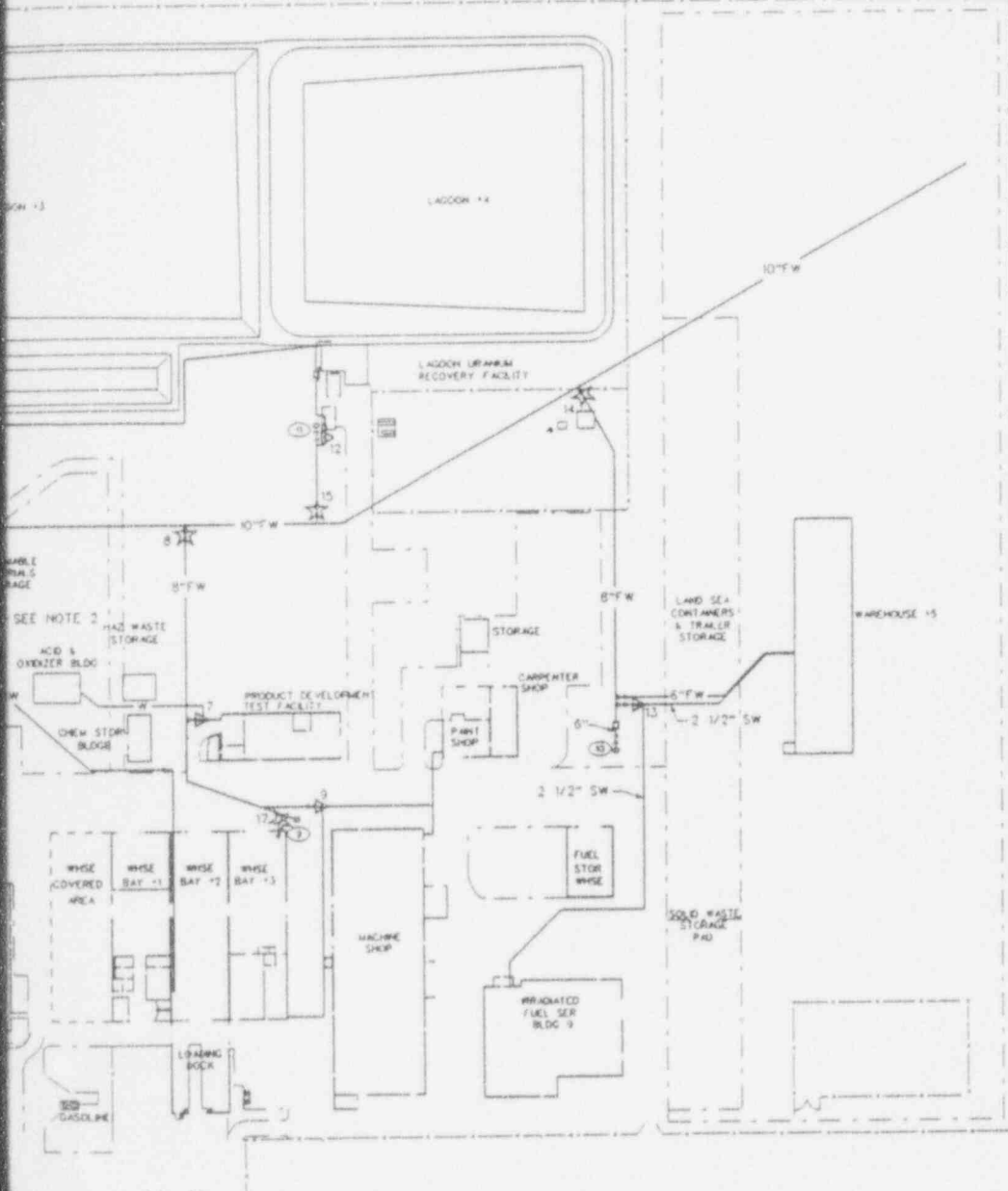
V	NAME	YEAR	CLASS	SIZE	BURY
*1	KENNEDY	1970	200W	10"	3'-0" NO PLATE
*2	MH VALVE & F CO. ANNISTON, ALA.		200W	8"	4'-6" NO PLATE
*3	KENNEDY	1976	200W	10"	4'-6" NO PLATE
*4	KENNEDY	1976	200W	10"	0'-8" NO PLATE
*5	KENNEDY	1973	175W	8"	7'-7" PLATE
*6	KENNEDY	1968	200W	10"	7'-6" NO PLATE
*7	KENNEDY	1973	175W	8"	3'-1" NO PLATE
*8	KENNEDY	1973	175W	8"	2'-7" PLATE
*9	KENNEDY	1973	175W	8"	2'-7" PLATE

○ FIRE HYDRANT NUMBERS

NOTE

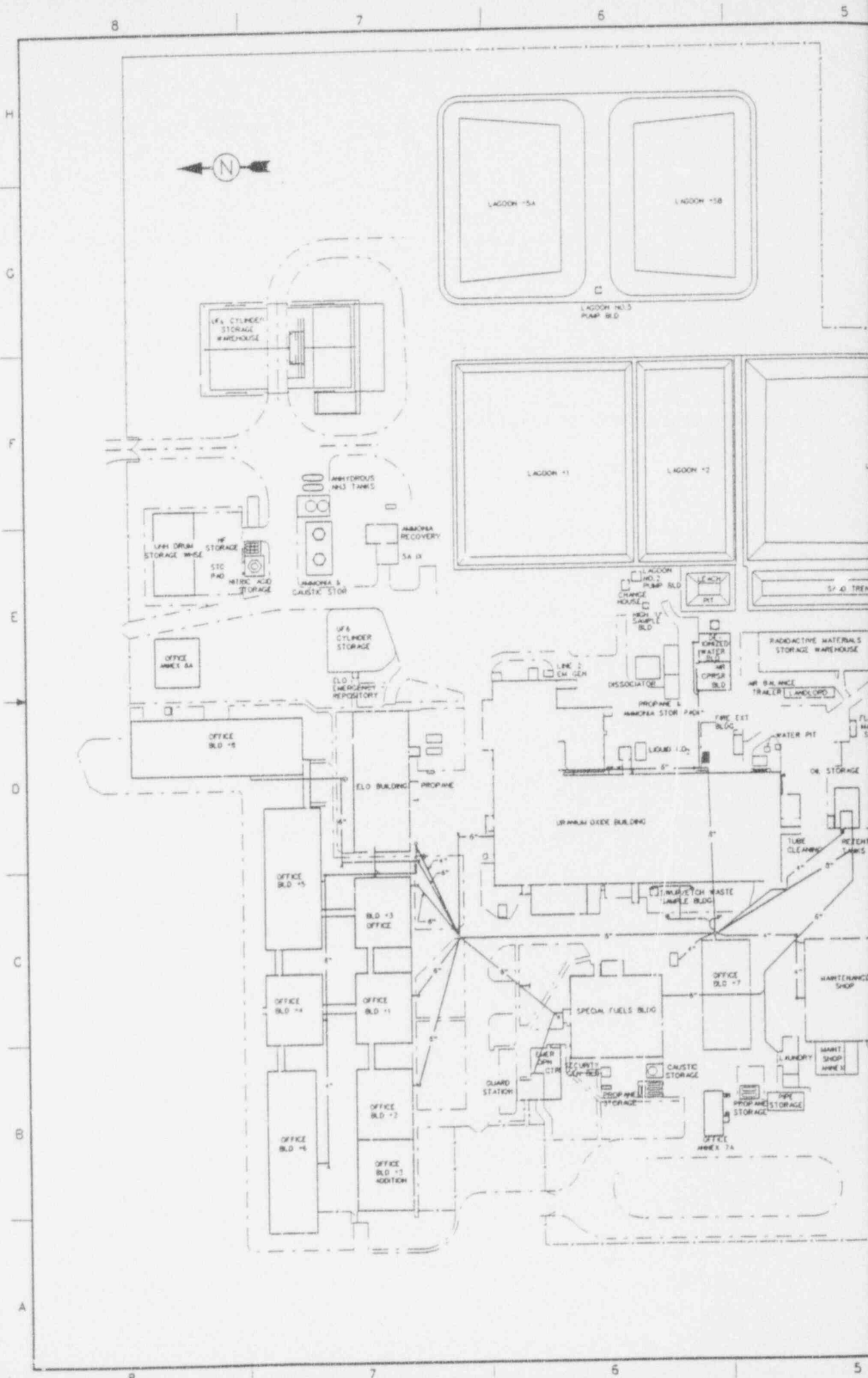
1. VALVE *12 IS AN INTEGRAL PART OF WATER METER *8.
2. THIS LINE IS OUT OF SERVICE & EXACT TERMINATION IS UNKNOWN.

Figure II-10.18



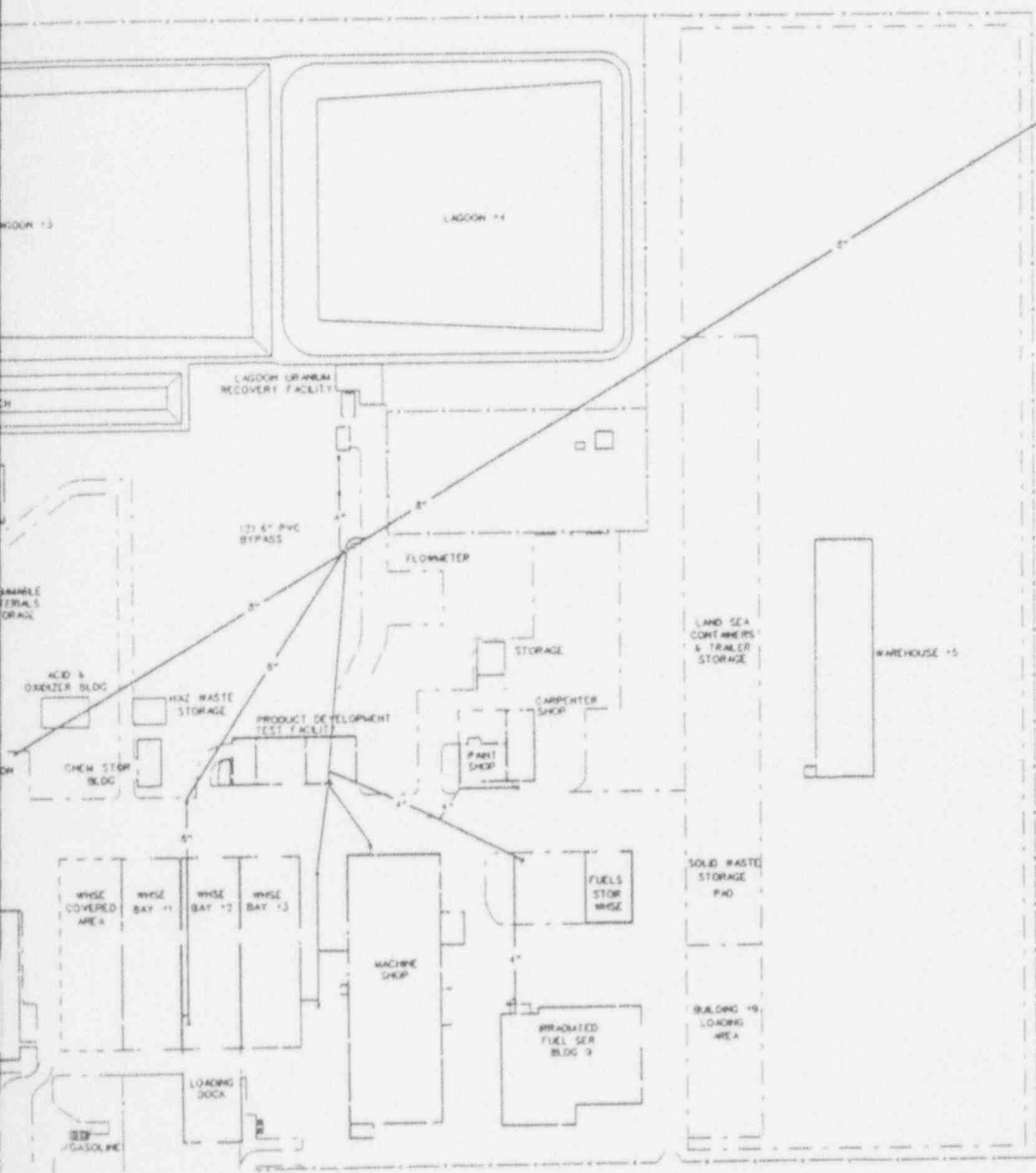
9405270146-04

REV	DATE	DESCRIPTION	BY
1	4-25-84	UP-DATED	
2	12/16/92	15-7-92	
3	7-27-92	7-24-92	
4	5-7-92	4-14-92	
APPROVED: [Signature]		REVISION DESCRIPTION	
Siemens Power Corporation - ND Advanced Nuclear Fuels Corporation			
SCALE: 1" = 60'		DATE: 5/18/94	
PROJECT NO: 100001		SHEET NO: 3	
DRAWN: [Signature]		CHECKED: [Signature]	
DESIGNED: [Signature]		APPROVED: [Signature]	
DATE: 5/18/94		PROJECT TITLE: HORN RAPIDS ROAD SITE ARRANGEMENT FIRE & WATER SUPPLY	
NEXT USED ON: [Blank]		PROJECT NO: EMF-608,610	
DRAWING NO: [Blank]		SHEET NO: 3	
REV: [Blank]		DATE: 5/18/94	



ANSTEC APERTURE CARD

Also Available on
 Aperture Card



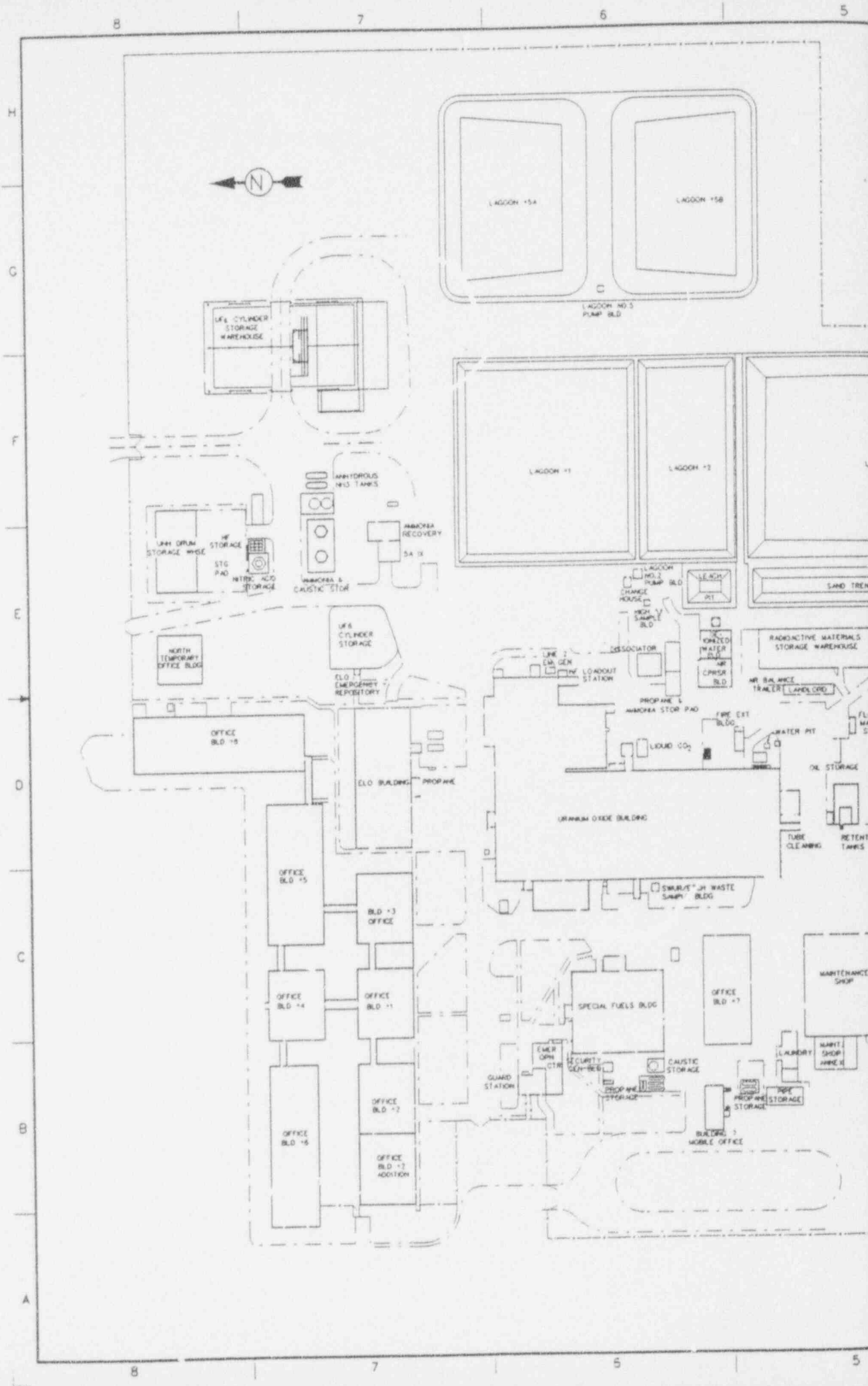
LEGEND

- MANHOLE
- △ MANHOLE
- ◆ MANHOLE
- ⊙ LIFT STATION

Figure II-10.18a

9405270146-05

REV	NO	DATE	DESCRIPTION	BY
1	1	4-15-92	UPDATED SITE PLAN	JLU
2	2	5-7-92	REVISED SITE PLAN & ADDED LIFT STATION	JLU
3	3	4-15-92	SHEETS 4 & 5 REDRAWN ON CADD AS-BUILD COMBINED	JLU
APPROVED DRAWING				
Siemens Power Corporation - ND Advanced Nuclear Fuels Corporation				
HORN RAPIDS ROAD SITE ARRANGEMENT SANITARY DRAIN				
SCALE: 1" = 50'			EMF-608.610	
PROJECT NO: 10001			SHEET NO: 4	
DATE: 5/18/94			TOTAL SHEETS: 11	



SHEETS AFFECTED BY REVISION	SHEET	1	2	3	4	5	6	7	8	9	10	11	12	13	14	15	16	17	18	19	20	21	22	23	24	25	26	27	28	29	30	31	32	33	34	35
REV	11	6	6	7	8	6	6	7	7	5	5	3	2	3	2	1	3	11	2	2	3	3	1	1	7	1	0	4	1	3	1	1	1	0	0	

EMF-2, Rev.
Page 10-56
May 18, 1994

ANSTEC APERTURE CARD

Also Available on Aperture Card

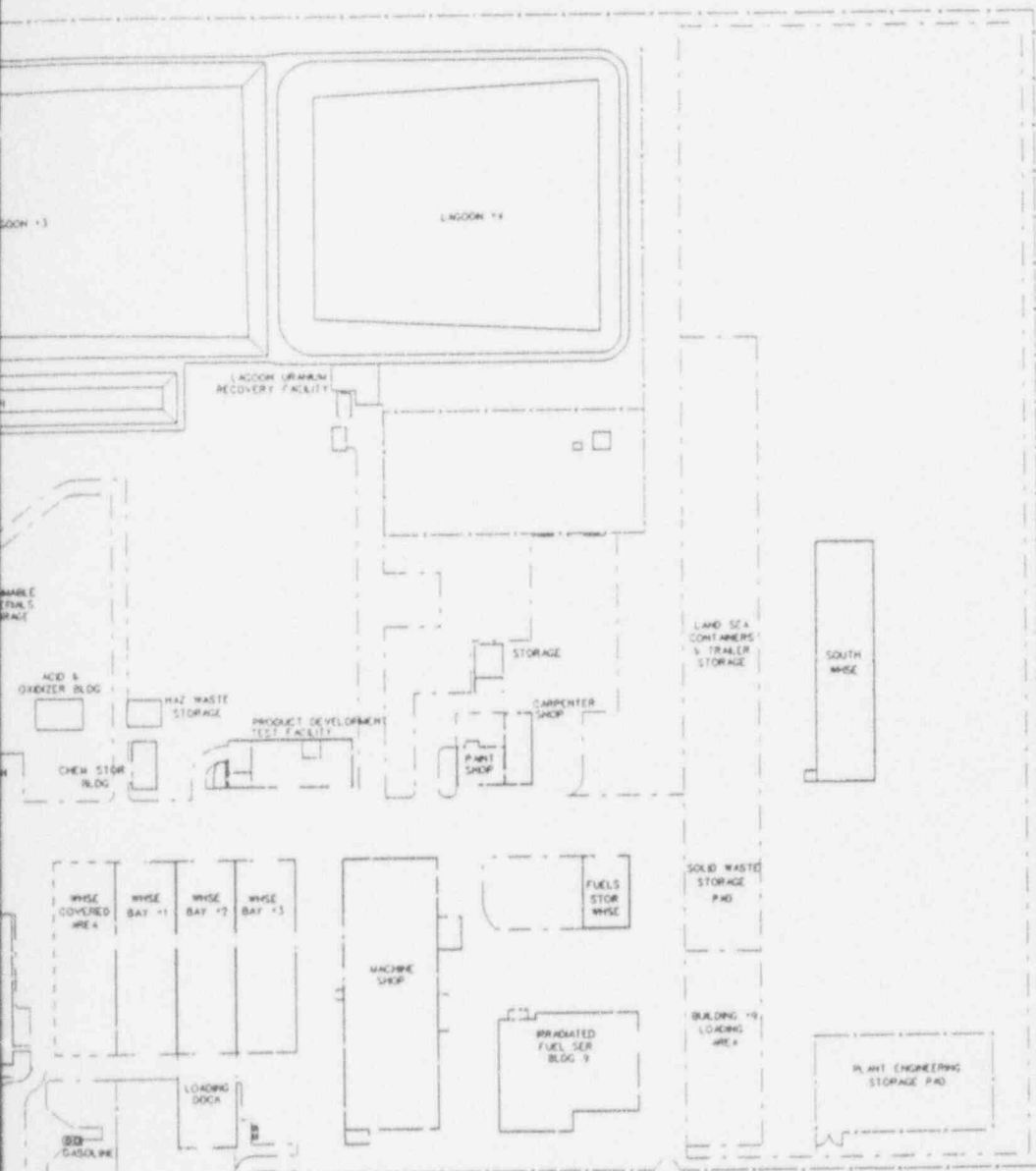


Figure II-10.1

9405270146-07

NO.	DATE	DESCRIPTION	BY
11	7-27-91	PROBE LOCATIONS, 25 SHEETS WAS 34 SHEETS LAB, SOUTH WAREHOUSE, PAINT SHOP, WAREHOUSE, & TOWER. ADDED UP 6 CYLINDER STORAGE WAREHOUSE JAN. TICAL	
10	5-18-93	ADDED SOUTH STORAGE PAD	
9	12-19-92	ADDED PDEY EXPANSION	
8	8-17-92	COMPRESSOR BUILDING	
7	5-7-92	RE-DRAWN ON CAD AS-BUILT	

Siemens Power Corporation - ND
Advanced Nuclear Fuels Corporation

SCALE: NONE

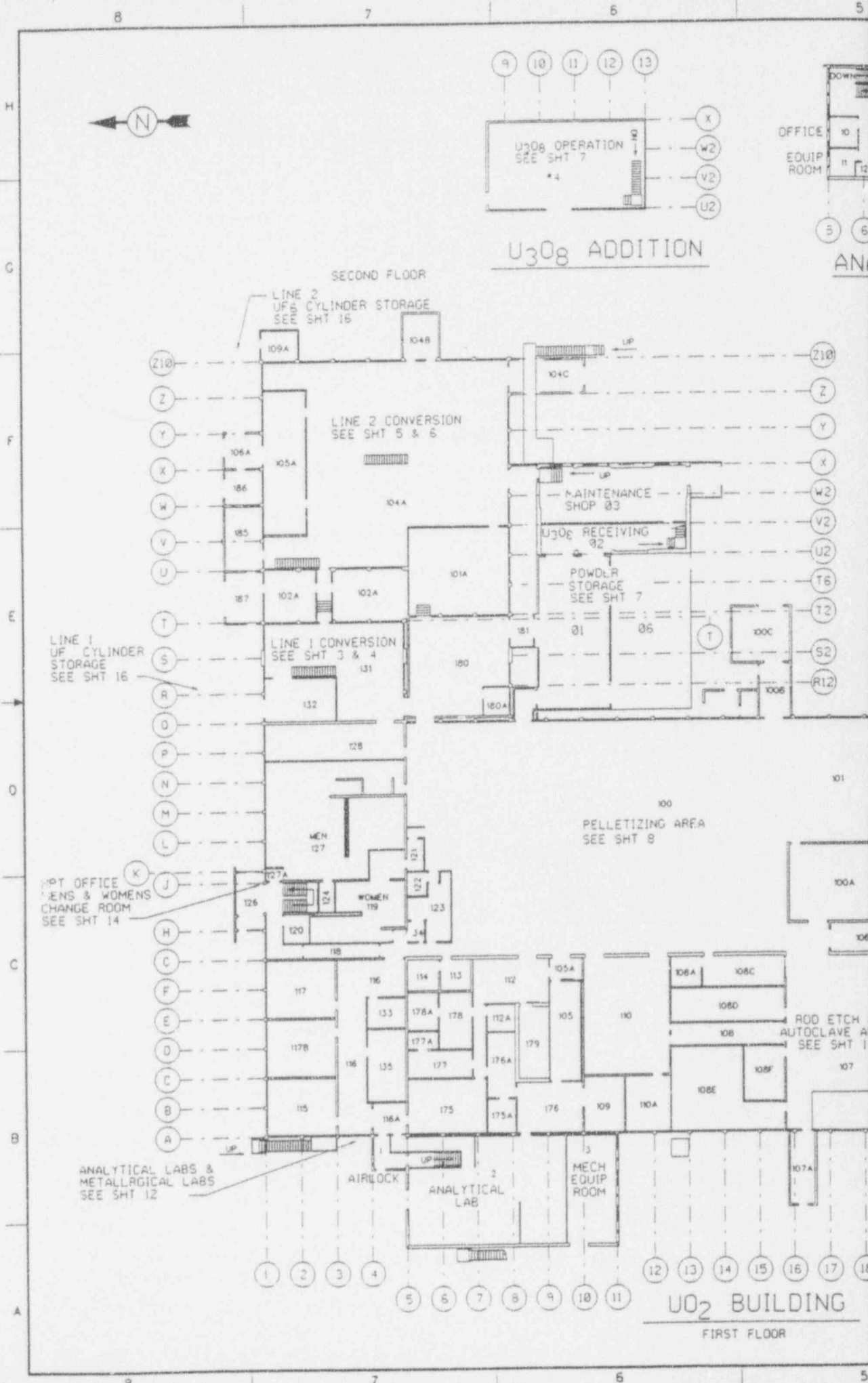
PLANT EQUIPMENT LAYOUT SITE PLAN

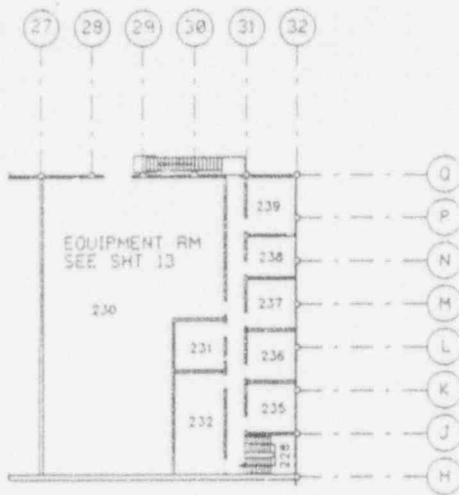
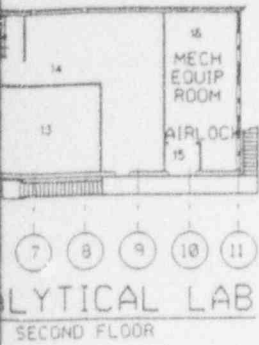
INTERGRAPH (CADD) VER 4.4.0

DATE	10-30-85	BY	BISHOP
DATE	1-14-86	BY	MEY
DATE	1-14-86	BY	CHAP

EMF-607,590

3800'S 1.0 & 10'	ARCHITECTURAL & STRUCTURAL 1/4" & 10'
DWG. NO.	REV.
REFERENCE DRAWING TITLE	





UO₂ BUILDING - SOUTH END
SECOND FLOOR

9405270146-08

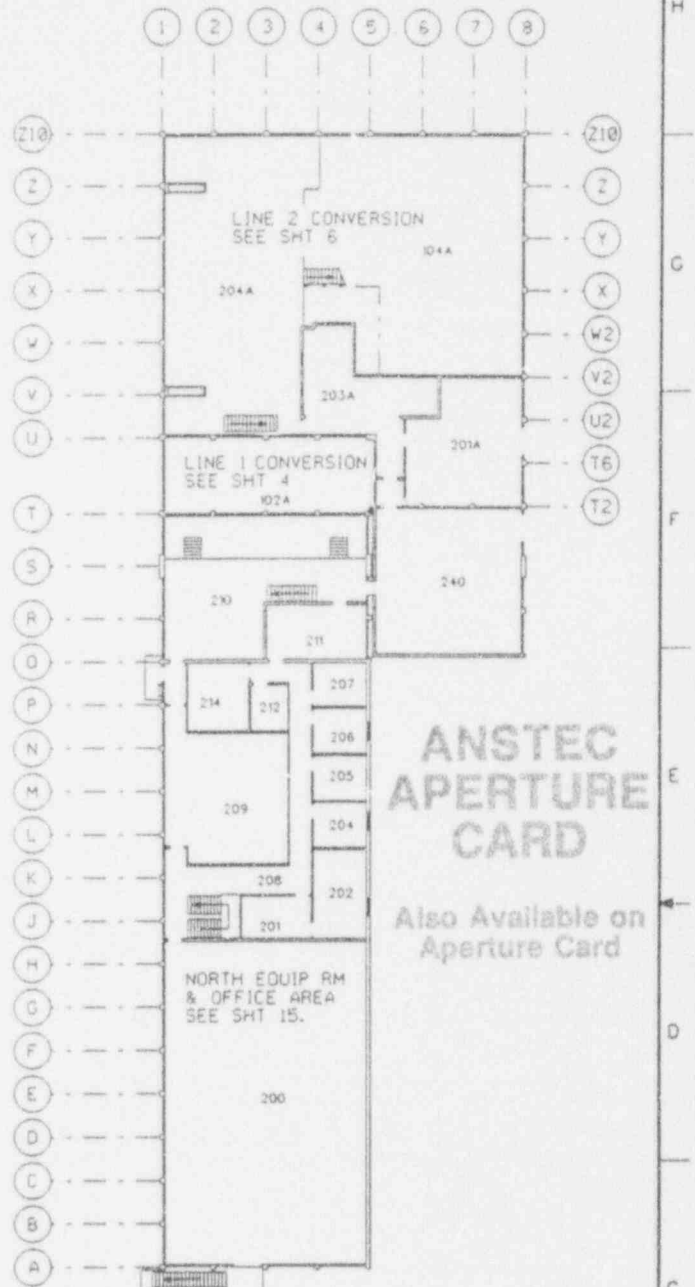
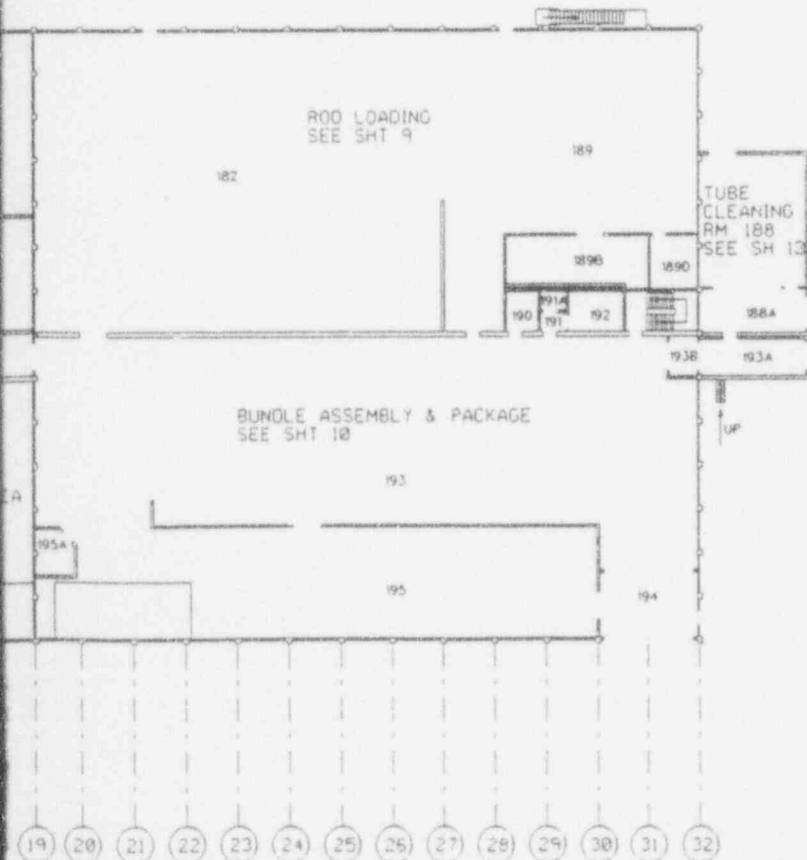
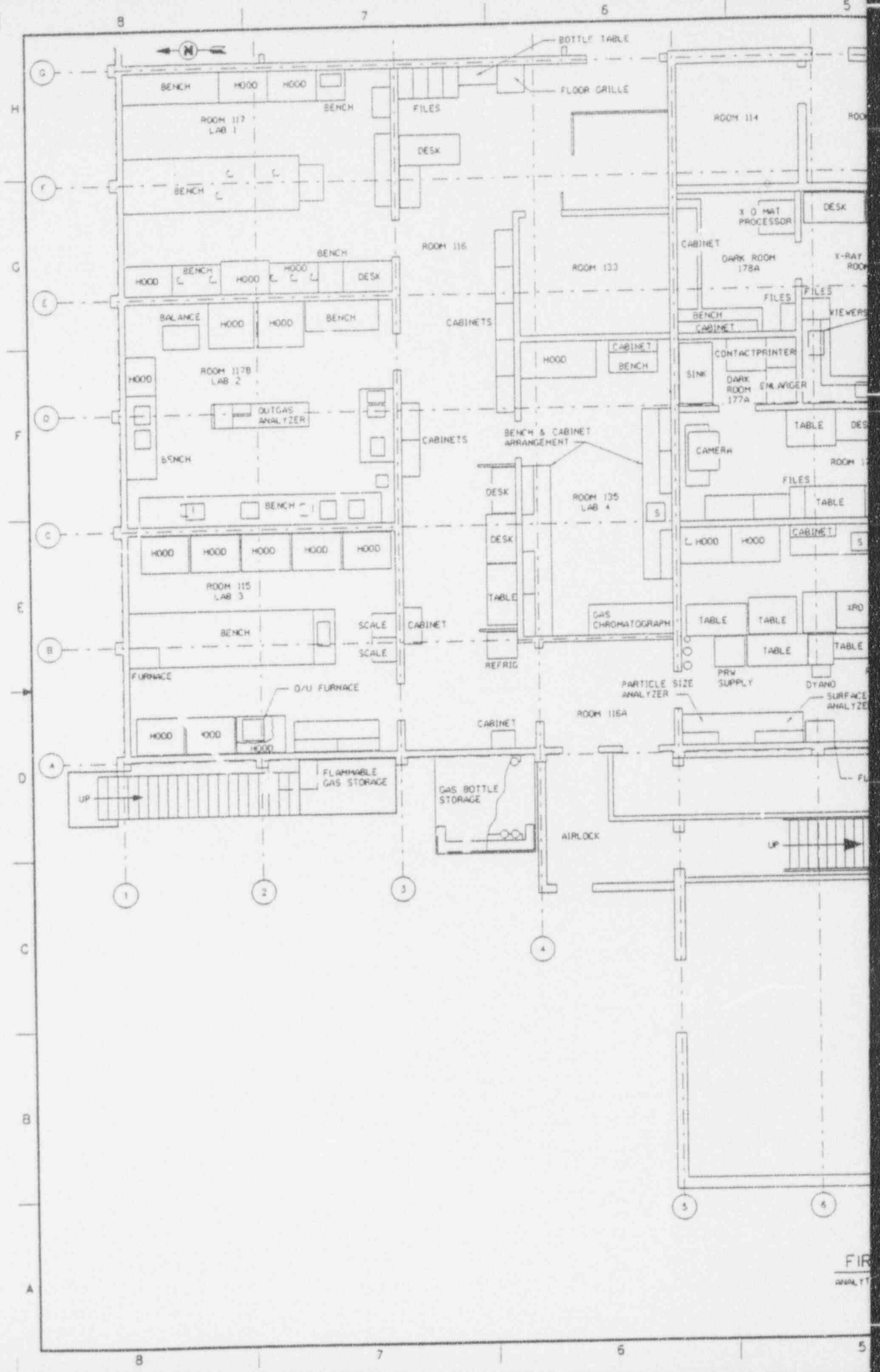


Figure II-10.3

UO₂ BUILDING - NORTH/CONVERSION
SECOND FLOOR

REV	2-22-94	35 SHEETS WAS 34 SHEETS ADDED ANALYTICAL LAB (BOTH FLOORS)	6
REV	5-18-93	WAS NOT TO 1/8" SCALE	5
REV	12-15-92	ADDED ROOM NUMBERS	4
REV	10-03-92	REMOVED WALL & RENUMBERED ROOMS	3
REV	5-11-92	REDRAWN ON CADL AS-BUILT	2
APPROVED	DR/WH	REVISION DESCRIPTION	REV
Siemens Power Corporation - ND Advanced Nuclear Fuels Corporation			
SCALE	1/16" = 1'		
PROJ. NO.	110001		
DATE	10-30-85		
BY	BISHOP		
CHKD BY			
APPROVED	2-18-87		
APPROVED	1-14-86		
APPROVED	1-14-86		
REV	1848	REV	2
DATE	04	DATE	05
EMF-607.590		5	

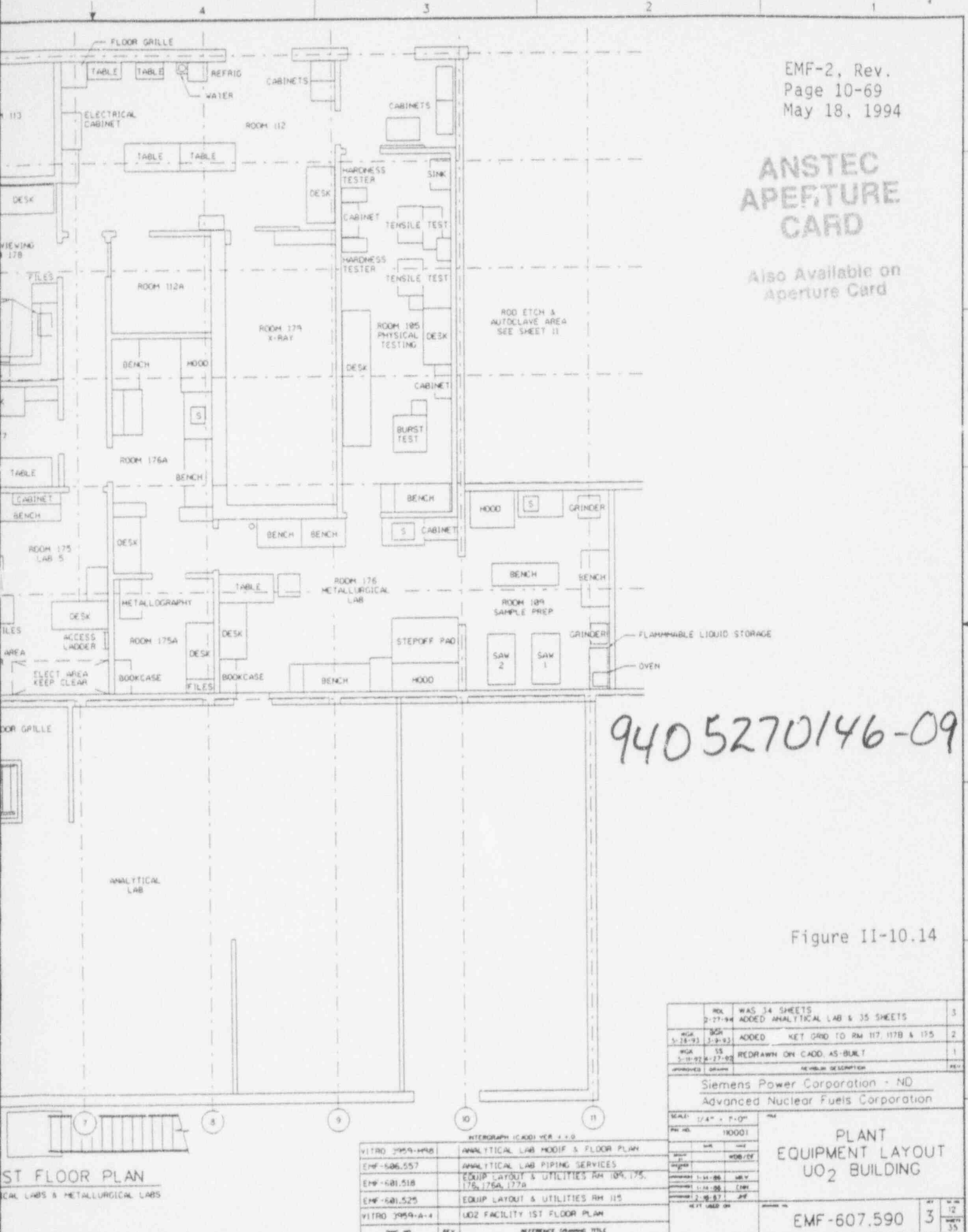


FIR
ANALYT

EMF-2, Rev.
Page 10-69
May 18, 1994

ANSTEC APEFUTURE CARD

Also Available on
Aperture Card



9405270146-09

Figure II-10.14

REV	2-27-94	WAS 34 SHEETS ADDED ANALYTICAL LAB & 35 SHEETS	3
REV	5-18-93	ADDED KEY CARD TO RM 117, 117B & 175	2
REV	5-11-92	REDRAWN ON CADD, AS-BUILT	1
APPROVED		REVISION DESCRIPTION	REV

Siemens Power Corporation - ND
Advanced Nuclear Fuels Corporation

SCALE: 1/4" = 1'-0"

PLANT
EQUIPMENT LAYOUT
UO₂ BUILDING

EMF-607.590 3

DATE	REV	REFERENCE DRAWING TITLE
VITRO 3959-498		ANALYTICAL LAB MODIF & FLOOR PLAN
EMF-606.557		ANALYTICAL LAB PIPING SERVICES
EMF-601.518		EQUIP LAYOUT & UTILITIES RM 104, 175, 176, 176A, 177A
EMF-601.525		EQUIP LAYOUT & UTILITIES RM 115
VITRO 3959-A-4		UO ₂ FACILITY 1ST FLOOR PLAN

1ST FLOOR PLAN
ANALYTICAL LABS & METALLURGICAL LABS

ANSTEC APERTURE CARD

EMF-2, Rev.
Page 10-73
May 18, 1994

Also Available on Aperture Card

LEGEND

- ▽ WATER METERS**
- *1 FOR ELO, OFFICE BLDGS 4, 5 & 6
 - *2 FOR UO2 SPECIAL FUELS, OFFICE BLDGS 1, 2 & 3
 - *3 FOR NORTH LAND SCAPING
 - *4 SPARE METER NO.
 - *5 FOR SOUTH UO2 COOLING TOWER, COMPRESSOR HOUSE & WAREHOUSE
 - *6 FOR LAGOONS & EYE WASHERS
 - *7 FOR FCTF BUILDING
 - *8 FOR MAINTENANCE & OFFICE BUILDING 7
 - *9 FOR WAREHOUSE, MACHINE SHOP & CARPENTER SHOP
 - *10 FOR OFFICE BUILDING 8
 - *11 FOR AMMONIA RECOVERY FACILITY
 - *12 FOR LAGOON URANIUM RECOVERY FACILITY
 - *13 FOR #5 BUILDING
 - *14 FOR LAUNDRY

★ MAIN SHUTOFF WATER VALVE NO'S

- *1-7, 9 & 10 ON MAIN LINE WITH POST INDICATORS
- *8 FEEDS FCTF, MACHINE SHOP, CARPENTER SHOP, CHEM STORAGE & ACID/OXIDIZERS BLDG
- *11 FEEDS ELO, OFFICE BUILDINGS 4, 5, 6 & 8
- *12 FEEDS MAINTENANCE & OFFICE BUILDING 7
- *13 FEEDS AMMONIA RECOVERY FACILITY
- *14 FEEDS FIRE HYDRANT FOR FUELS STORAGE WAREHOUSE AND #5B
- *15 FEEDS FIRE HYDRANT & LUR FACILITY
- *16 WATER CONTROL VALVE SPRINKLER SYSTEM FOR BUILDING 8 WITH POST INDICATORS
- *17 FEEDS WAREHOUSE SPRINKLER SYSTEM
- *18 FEED HYDRANT @ OFFICE BUILDING 2A

VALVE LIST

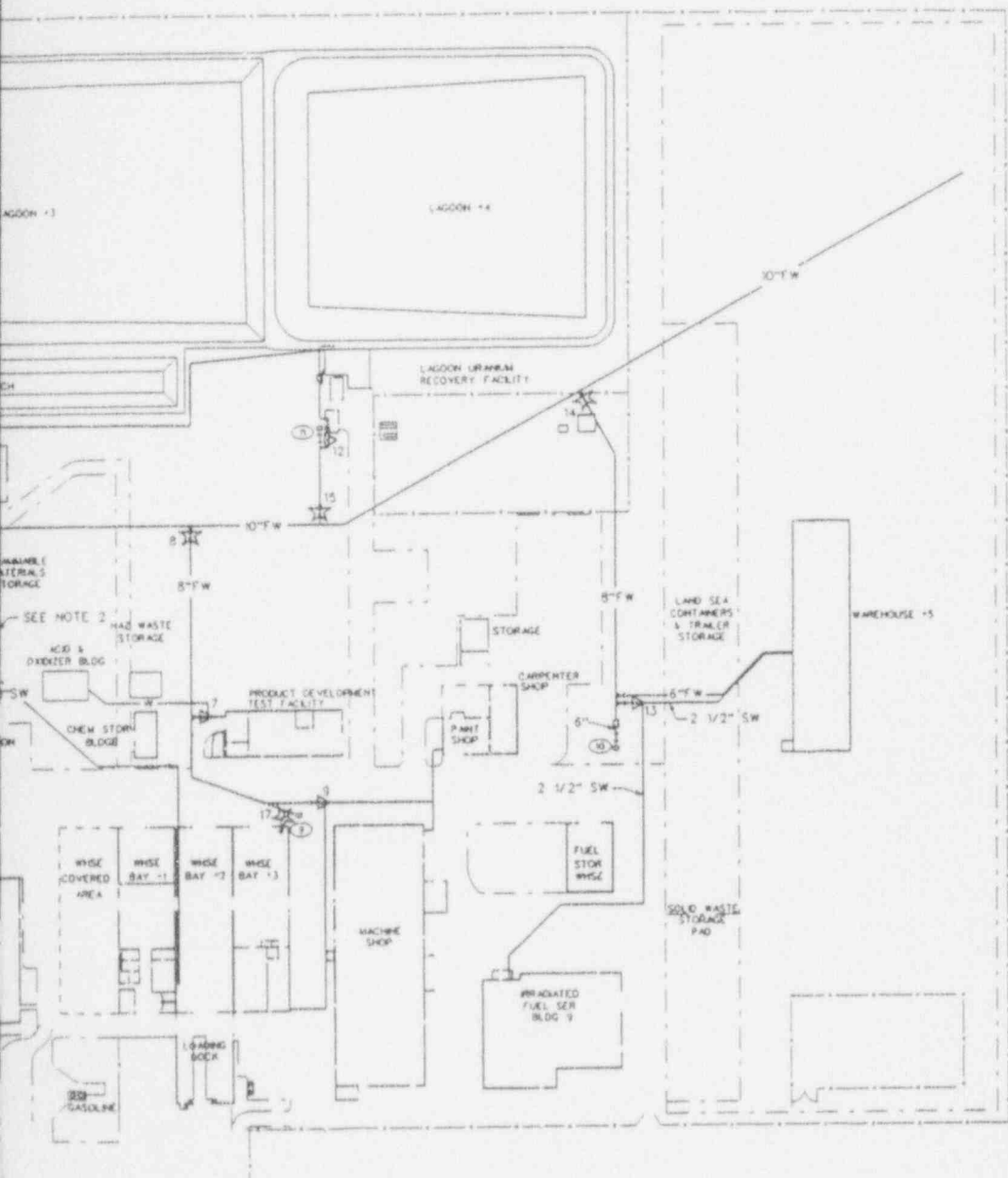
V	NAME	YEAR	CLASS	SIZE	BURY
*1	KENNEDY	1970	200W	10"	3'-0" NO PLATE
*2	NY VALVE & F CO. ANNISTON, ALA.		200W	8"	4'-6" NO PLATE
*3	KENNEDY	1976	200W	10"	4'-6" NO PLATE
*4	KENNEDY	1976	200W	10"	0'-8" NO PLATE
*5	KENNEDY	1973	175W	8"	1'-7" PLATE
*6	KENNEDY	1968	200W	10"	1'-6" NO PLATE
*7	KENNEDY	1973	175W	8"	3'-1" NO PLATE
*8	KENNEDY	1973	175W	8"	2'-7" PLATE
*9	KENNEDY	1973	175W	8"	2'-7" PLATE

○ FIRE HYDRANT NUMBERS

NOTE

- 1. VALVE #12 IS AN INTEGRAL PART OF WATER METER #8.
- 2. THIS LINE IS OUT OF SERVICE & EXACT TERMINATION IS UNKNOWN.

Figure II-10.18



9405270146-10

REV.	DATE	DESCRIPTION
1	4-5-94	UP-DATED
2	12-18-92	UP-DATED
3	7-27-92	UP-DATED
4	5-7-92	REDRAWN ON CADD AS-BUILT

Siemens Power Corporation - ND
Advanced Nuclear Fuels Corporation

SCALE: 1" = 60'	HORN RAPIDS ROAD SITE ARRANGEMENT FIRE & WATER SUPPLY
FIG. NO. 10001	
DATE: 5-18-92	BY: JLB
DESIGNED BY: JLB	CHECKED BY: JLB
APPROVED BY: JLB	LAB: JLB
DATE: 5-18-92	REVISED BY: JLB
DATE: 5-18-92	REVISED BY: JLB

EMF-608.610

CHG. NO.	REV.	REFERENCE DRAWING TITLE

8

7

6

5

H

G

F

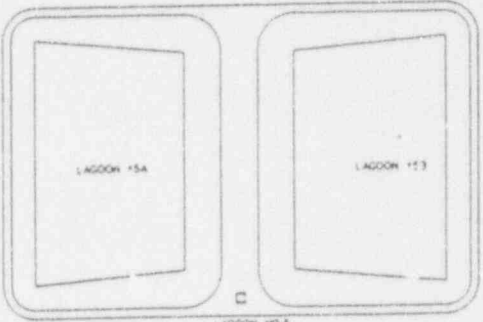
E

D

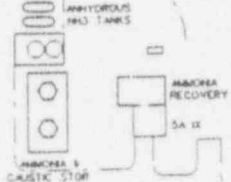
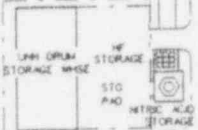
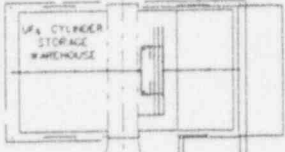
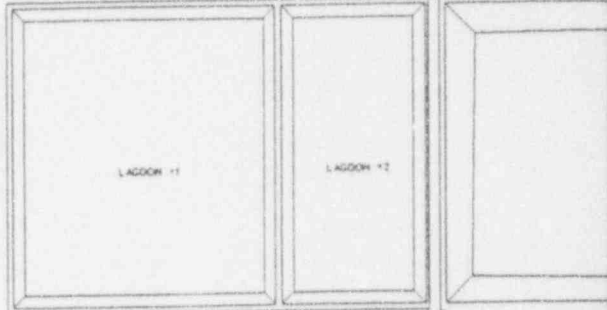
C

B

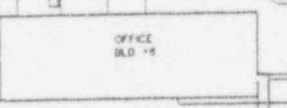
A



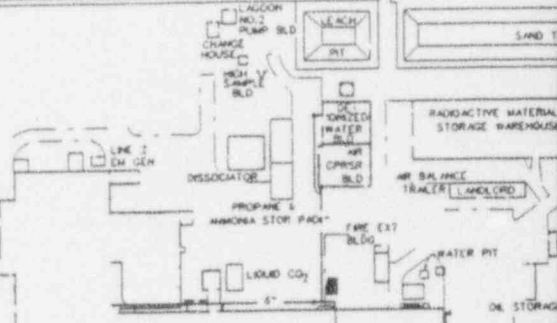
LAGOON NO. 5 PUMP BLD



ELO - EMERGENCY REPOSITORY



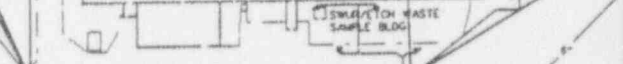
ELO BUILDING PROPANE



URANIUM OXIDE BUILDING



BLD #13 OFFICE



OFFICE BLD #1

SPECIAL FUELS BLDG

OFFICE BLD #7



OFFICE BLD #2

GUARD STATION

SECURITY GEN BLD

CAUSTIC STORAGE

LABORATORY



OFFICE BLD #7 ADDITION

PROPANE STORAGE

PROPANE STORAGE

OFFICE ANNEX 7A

MAINT SHOP ANNEX 7

MAINT SHOP ANNEX 7

8

7

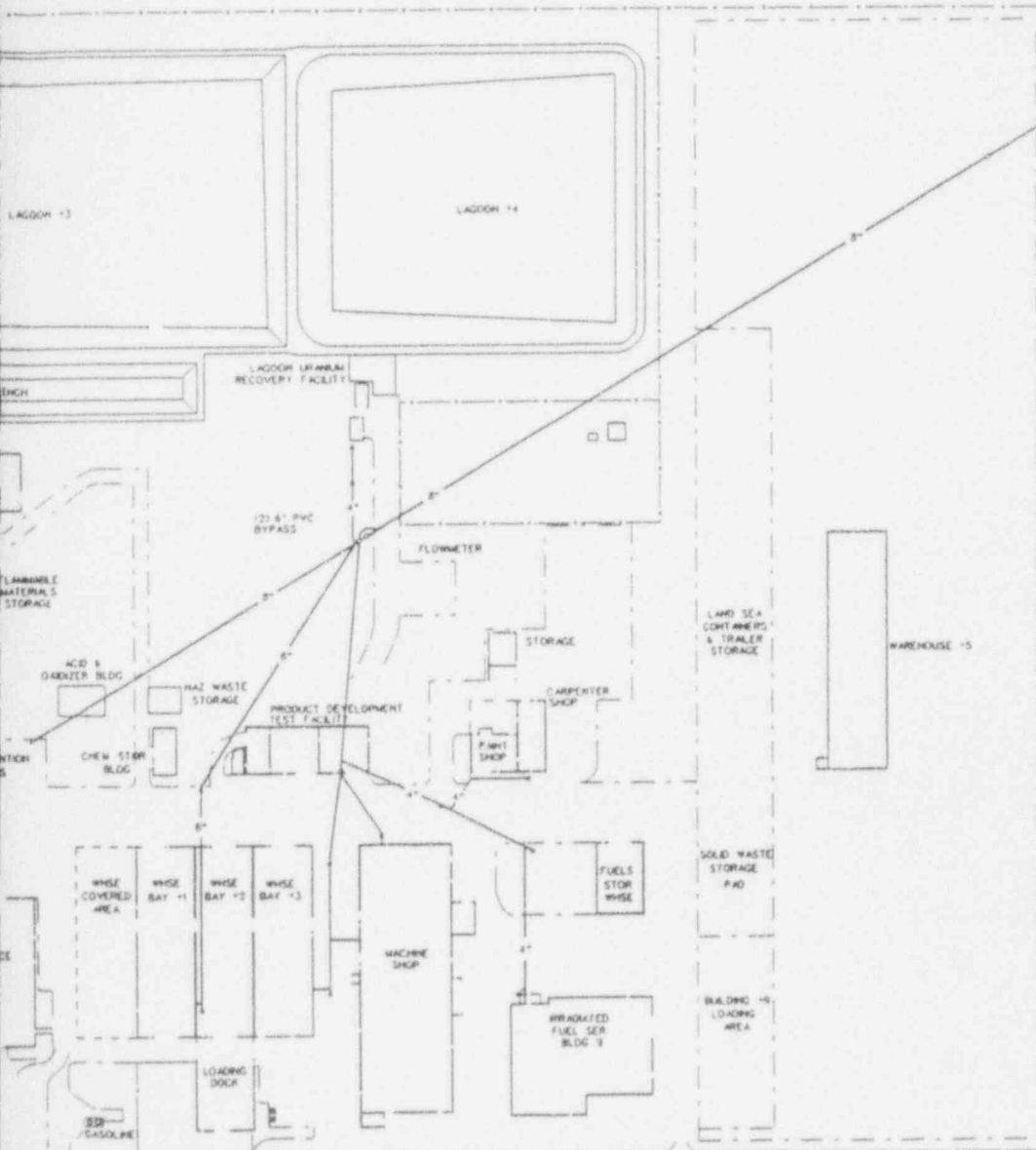
6

5

ANSTEC APERTURE CARD

EMF-2, Rev.
Page 10-74
May 18, 1994

Also Available on
Aperture Card



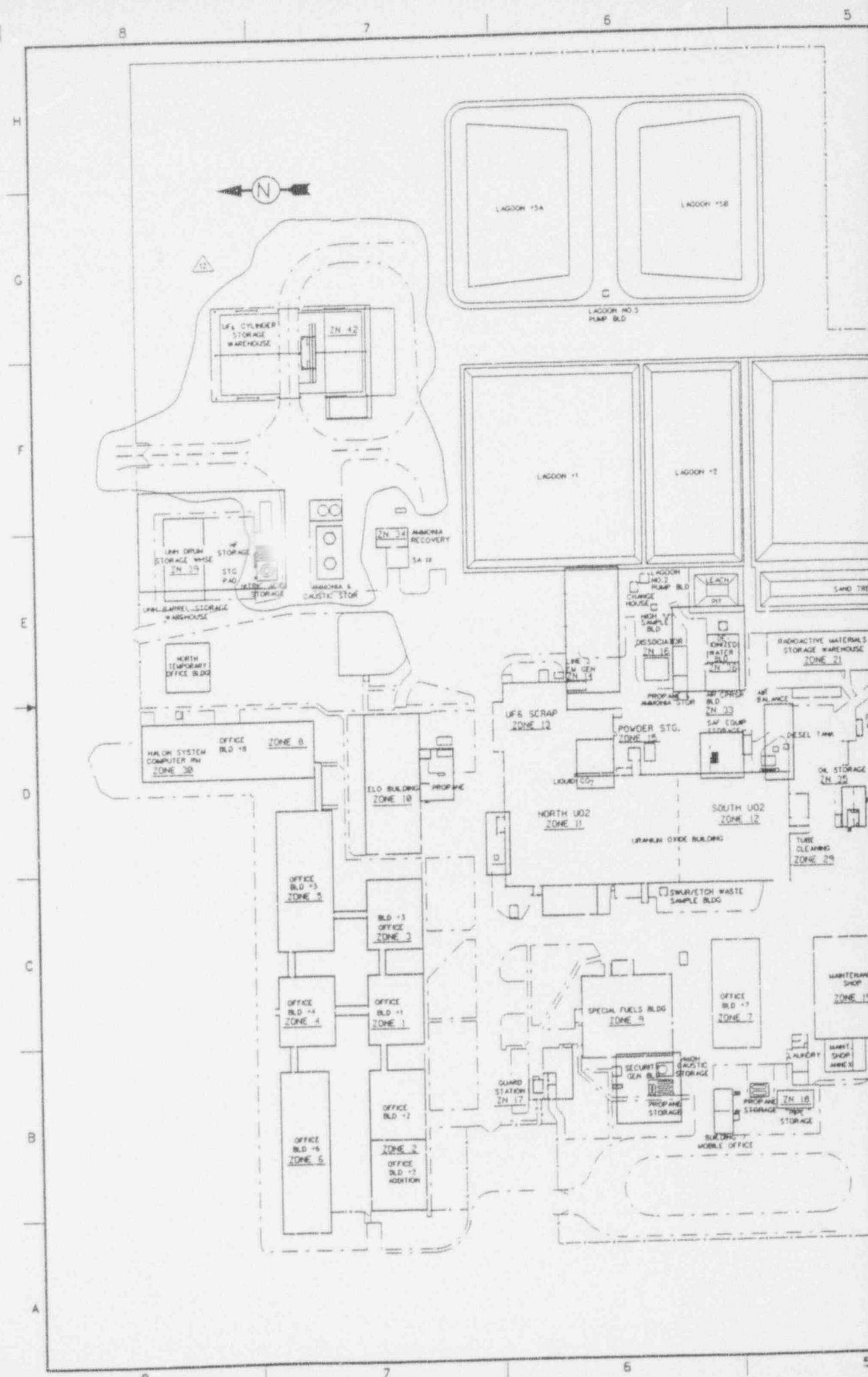
LEGEND
 O MANHOLE
 X MANHOLE
 # MANHOLE
 □ LIFT STATION

Figure II-10.18a

9405270146-11

REV	DATE	DESCRIPTION	BY
1	4-5-94	UPDATED SITE PLAN	4
2	12-15-92	REVISED SITE PLAN & ADDED LIFT STATION	3
3	3-7-92	SHEETS 4 & 5 REDRAWN ON CADD AS-BUILD COMBINED	2
APPROVED: <i>[Signature]</i> DATE: <i>[Date]</i>			
PROJECT: HORN RAPIDS ROAD SITE ARRANGEMENT SANITARY DRAIN			
CLIENT: Siemens Power Corporation - ND Advanced Nuclear Fuels Corporation			
SCALE:	1" = 80'		
DATE:	10/00/94		
BY:	WPS		
CHECKED:	LMB		
APP'D:			
DATE USED ON:		REV	DATE
		4	4
		4	11

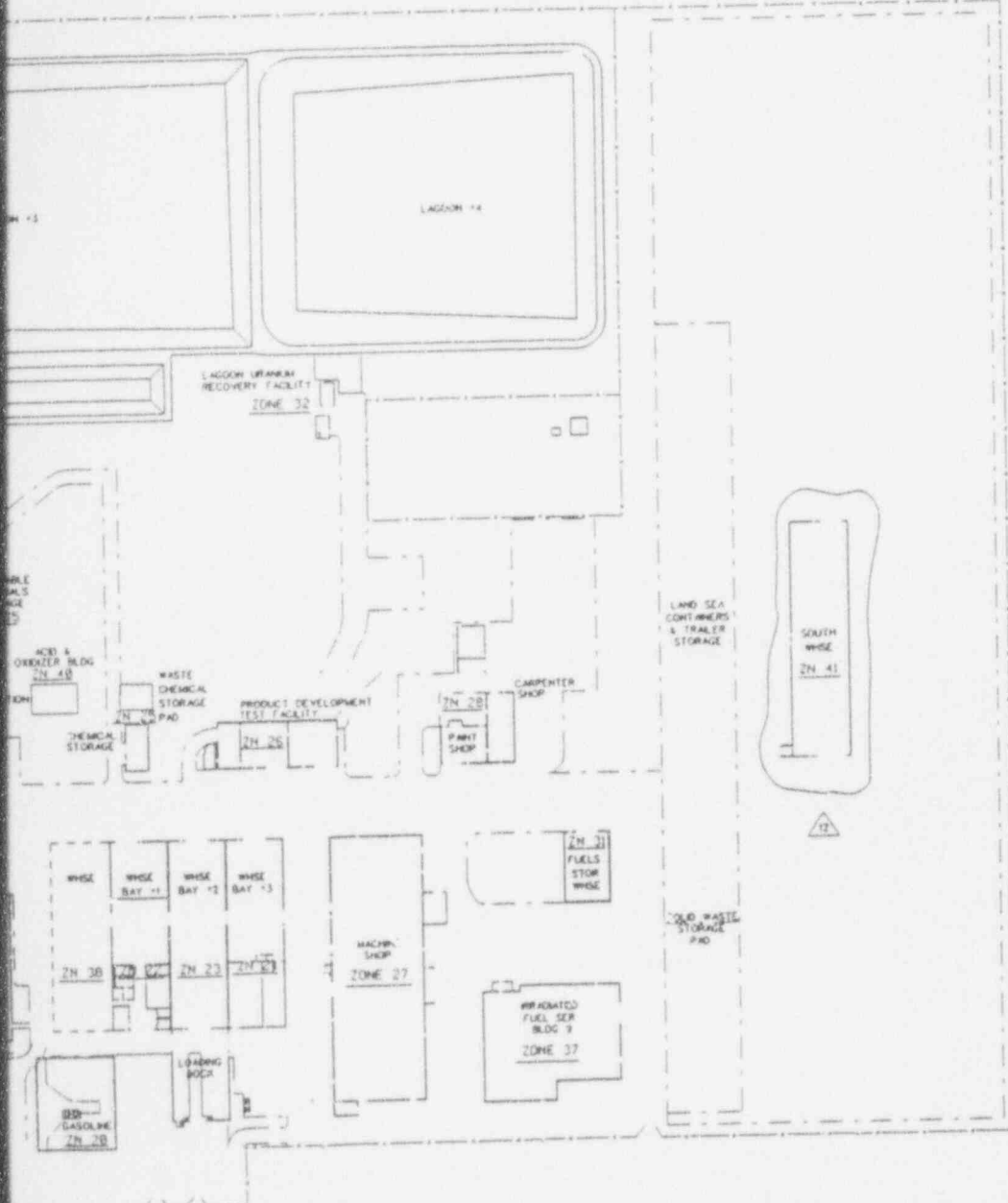
DWG. NO.	REV	REFERENCE DRAWING TITLE



ANSTEC APERTURE CARD

EMF-2, Rev.
Page 10-90
May 18, 1994

Also Available on
Aperture Card



FIRE ALARM SYSTEM DRAWING LIST

ZONE	DWG. #	SHT.	DESCRIPTION
1-34	EMF-606.747	1	SITE PLAN, DWG. LIST, BLDG. PLANS
1-6		2	OFFICE BLDG. 1-6
7-8		3	OFFICE BLDG. 7&8
10		4	ELD. BLDG.
24		4	URANIUM WAREHOUSE
21		4	RADIOACTIVE WASTE WARE & FT. TRLR
11		5	UO2 NORTH
12		5	UO2 SOUTH
15		5	POWDER STL. USOB AND MAINT. HOT SHOP
24		5	TUBE CLEANING
16		6	ANEMIA DISSOCIATOR
17		6	CENTRAL ALARM STATION
27		6	MACHINE SHOP
28		6	CARPENTER SHOP
32		6	LAGOON URANIUM RECOVERY
33		6	AIR COMPRESSOR BLDG.
34		6	ANEMIA RECOVERY FACILITY
35		6	OIL STOR. & FLAMMABLE LIQ. STOR.
14		6	EMERGENCY GENERATOR BLDG.
48		6	ACID/OXIDIZER BUILDING
29		7	MAINTENANCE
29		7	GAS DISPENSING SYSTEM
12, 13		7	WAREHOUSE 1, 2, 3 & COVERED STL.
25		7	CHEMICAL STG. & LAUNDRY
26		7	FUEL COOLING TEST FACILITY
31		7	WAREHOUSE #4
38		8	BLDG. #8 FIRE PROTECT. ALARM DEVICE
38		9	BLDG. #8 ALARM DETAILS
1-6		10	BLDG. 1-6 DOOR CLOSURES
9		11	S.F. BLDG.
37		12	I.F. S.B.
38		13	BLDG. #8 FIRE ALARM WIRING DIAGRAM
41-42		14	S. WAREHOUSE & SCALEHOUSE PLAN
17	EMF-604.120	1	CENTRAL GUARD STA. PLAN & EQUIP. LOC.
13		2	SMOKE DETECT. GRAPHIC PNL. WIRING DIA.
1		3	OFF. BLDGS. 2&MS 200 W/AL. ELEM. DIA.
17		4	SMOKE DETECTOR ANNUNCIATOR
1-6		5	WIRING DIA. 2&MS 200 CONT. SCH. DB 1-5
17		6	FLEXALARM III RELAY PNL. DR. WIRING DIA.
17		7	FLEXALARM III RELAY PNL. WIRING DIA.
17		8	FACP-1 LAYOUT & WIRING DIAGRAM
17		9	FACP-2 LAYOUT & WIRING DIAGRAM
1-6		10	2&MS 200 F.A. SMOKE DETECTOR & EQUIP. INSTALLATION O.B. 1-5
6		11	WIRING DIA. 2&MS 200 F.A. SMOKE DETECTOR & EQUIP. INSTALL. O.B. 6
17		12	FL. I ALARM III ZONE ANNUNCIATOR
17		13	FLEXALARM III MASTER STA. PANORAM
17		14	FLEXALARM III MASTER STA. BOX DETAILS
17		15	FLEXALARM III MASTER STA. BOX DETAILS
1-34		16	SITE INTER-BLDG. TRUNK PLAN
1, 17, 11		17	PLANS, DETAILS & ELEV. UO2 PNL. 200 SF PNL. 220 & OFFICE BLDG. 1 PNL. 118
1, 17		18	DETAILS & ELEV. UO2 PNL. 200 & OFFICE BLDG. 1 PNL. 118
41		19	S. WAREHOUSE FACP-3 LAYOUT & WIRING DIAGRAM

NOTES:

- SEE 804.120 SH. 5, 17, 18 619 FOR PLANS, EQUIP. ARRANGEMENT & DETAILS & WIRING FOR THE FOLLOWING AREAS: OFFICE BLDG. 1; EQUIP. PNL. 118, UO2 BLDG. PNL. 200 & SF. BLDG. PNL. 220.
- SEE THIS DWG. FOR ADDY LOCATIONS.

REV.	DATE	DESCRIPTION	BY
13	5-16-94	ADDED ANALYTICAL LAB SHUR/ETCH WASTE SAMPLE BLDG. & OFFICE BLDG. 7A	
12	3-1-94	ADD S. WAREHOUSE & SCALEHOUSE PLANS (ZONES 41 & 42) REVISE DWG. LISTS TO INCLUDE NEW DRAWINGS	
11	11/2/93	REVISED DWG. LIST FOR EMF-604.120	
10	10/16/93	REVISED SITE PLAN PER ENG. RED-LINES	
9	7/22/92	ADDED UFS CYLINDER STORAGE PAD	
8	7/22/92	REVISED SITE PLAN & ADDED ZONE 48	
7	12/11/90	ADDED POWDER STORAGE ADDITION	
6	5-6-90	CADD RE-DRAW AND AS-BUILT	
5	5-6-90	AS-BUILT AND ADDED LAUNDRY TO DWG. LIST SHT. 7	

Siemens Power Corporation - ND
Advanced Nuclear Fuels Corporation

SCALE: 1"=50'

DATE: 12/8/84

BY: TEL

PROJECT NO: EMF-606.747

REV. 12

Figure II-10.32

9405270146-12