

*official*

JAN 24 1991

Docket Nos. 50-325, 50-324  
License Nos. DPR-71, DPR-62

Carolina Power and Light Company  
ATTN: Mr. Lynn W. Eury  
Executive Vice President  
Power Supply  
P. O. Box 1551  
Raleigh, NC 27602

Gentlemen:

SUBJECT: SYSTEMATIC ASSESSMENT OF LICENSEE PERFORMANCE  
REPORT NOS. 50-325/90-38 AND 50-324/90-38

This refers to the NRC's Systematic Assessment of Licensee Performance (SALP) Report for your Brunswick facility which was sent to you on December 7, 1990; our meeting of December 19, 1990, at which we discussed the report; and your written response dated January 16, 1991. Enclosed is our summary of the December 19, 1991 meeting and a copy of the slides used during this meeting. Also enclosed is a revision to the Initial SALP Report and constitutes the Final SALP Report.

We have reviewed your written response and find that no changes to the Initial SALP Report are needed. No reply to this letter is necessary; however, should you have any further questions concerning this matter, I will be pleased to discuss them with you.

Sincerely,

*JSI*

Stewart D. Ebnetter  
Regional Administrator

Enclosures:

- 1. Meeting Summary
- 2. SALP Slides
- 3. CP&L Letter dated January 16, 1991
- 4. Revision Sheet

cc w/encls: (See page 2)

9102110087 910124  
PDR ADOCK 05000324  
Q PDR

*11*  
*15-40*

JAN 24 1991

cc w/encls:

R. B. Starkey, Jr.  
Vice President  
Brunswick Nuclear Project  
P. O. Box 10429  
Southport, NC 28461

J. L. Harness  
Plant General Manager  
Brunswick Steam Electric Plant  
P. O. Box 10429  
Southport, NC 28461

R. E. Jones, General Counsel  
Carolina Power & Light Company  
P. O. Box 1551  
Raleigh, NC 27602

Ms. Frankie Rabon  
Board of Commissioners  
P. O. Box 249  
Bolivia, NC 28422

Dayne H. Brown, Director  
Division of Radiation Protection  
N. C. Department of Environmental,  
Commerce & Natural Resources  
P. O. Box 27687  
Raleigh, NC 27611-7687

H. A. Cole  
Special Deputy Attorney General  
State of North Carolina  
P. O. Box 629  
Raleigh, NC 27602

Robert P. Gruber  
Executive Director  
Public Staff - NCUC  
P. O. Box 29520  
Raleigh, NC 27626-0520

bcc w/encls: (See page 3)

JAN 24 1991

bcc w/encls:

- K. M. Carr, Chairman
- T. M. Roberts, Commissioner
- F. J. Remick, Commissioner
- K. C. Rogers, Commissioner
- J. R. Curtiss, Commissioner
- J. M. Taylor, EDO
- H. L. Thompson, Jr., EDO
- R. W. Borchardt, Regional Coordinator, EDO
- T. E. Murley, NRR
- S. Varga, NRR
- E. Adensam, NRR
- T. Le, NRR
- R. Nease, SALP Coordinator, NRR
- Regional Administrators, RI, RIII, RIV, and RV
- K. Clark, RII, PAO
- D. Verrelli, DRP, RII
- H. Christensen, DRP, RII
- R. Carroll, DRP, RII
- K. Landis, Chief, TSS
- NRC Resident Inspector
- DRS and DRSS Branch Chiefs, and Section Chiefs
- INPO
- IMPELL
- Document Control Desk

RII:DRP  
*by phone*  
 RPrevatte  
 01/23/91

RII:DRP  
*by phone*  
 DVerrelli  
 01/23/91

RII:DRP  
*nils for*  
 EMerschhoff  
 01/23/91

RII:DRSS  
*JS*  
 JStohr  
 01/23/91

RII:DRS  
*CK*  
 CJulian  
 01/23/91

NRR  
*Concurred by phone*  
 TLe  
 01/24/91

NRR  
*Concurred by phone*  
 EAdensam  
 01/24/91

RII:ORA  
*JM*  
 JMilhoan  
 01/24/91

ENCLOSURE 1

MEETING SUMMARY

A. A meeting was held at 10:00 a.m. on December 19, 1990, at the Brunswick Visitor's Center to discuss the SALP Board Report for the Brunswick Facility.

B. Licensee Attendees:

S. H. Smith, Jr., President & CEO  
L. W. Eury, Executive Vice President  
R. A. Watson, Senior Vice President  
G. Vaughan, VP Nuclear Services  
R. Lucas, Manager, Nuclear Engineering  
L. Loflin, Manager - Nuclear Assessment Department  
H. Banks, Manager Corporate QA Department  
R. B. Starkey, Vice President Brunswick Project  
J. L. Harness, Plant Manager

The list of licensee attendees above does not include the large number of CP&L employees that were present at the SALP presentation. The personnel were supervisors, plant operators, maintenance personnel, and various members of the plant staff. This large turnout was beneficial to the SALP process and is highly recommended for future presentations.

C. NRC Attendees:

S. D. Ebnetter, Regional Administrator, Region II (RII)  
E. W. Merschhoff, Deputy Director, Division of Reactor Projects (DRP), RII  
E. G. Adensam, Director, Directorate II-1, Office of Nuclear Reactor Regulation (NRR)  
N. B. Le, Project Manager, NRR  
R. L. Prevatte, Senior Resident Inspector - Brunswick, DRP, RII  
W. Levis, Resident Inspector - Brunswick, DRP, RII  
D. J. Nelson, Resident Inspector - Brunswick, DRP, RII  
R. E. Carroll, Jr., Project Engineer, DRP, RII  
J. F. Wechselberger, EDO Region II Coordinator

UNITED STATES  
NUCLEAR REGULATORY  
COMMISSION



SYSTEMATIC ASSESSMENT  
OF  
LICENSEE PERFORMANCE  
(SALP)

CAROLINA POWER  
AND  
LIGHT COMPANY

SALP CYCLE 9

SEPTEMBER 1, 1989

THROUGH

SEPTEMBER 30, 1990

BRUNSWICK 1 AND 2

SOUTHPORT, NORTH CAROLINA

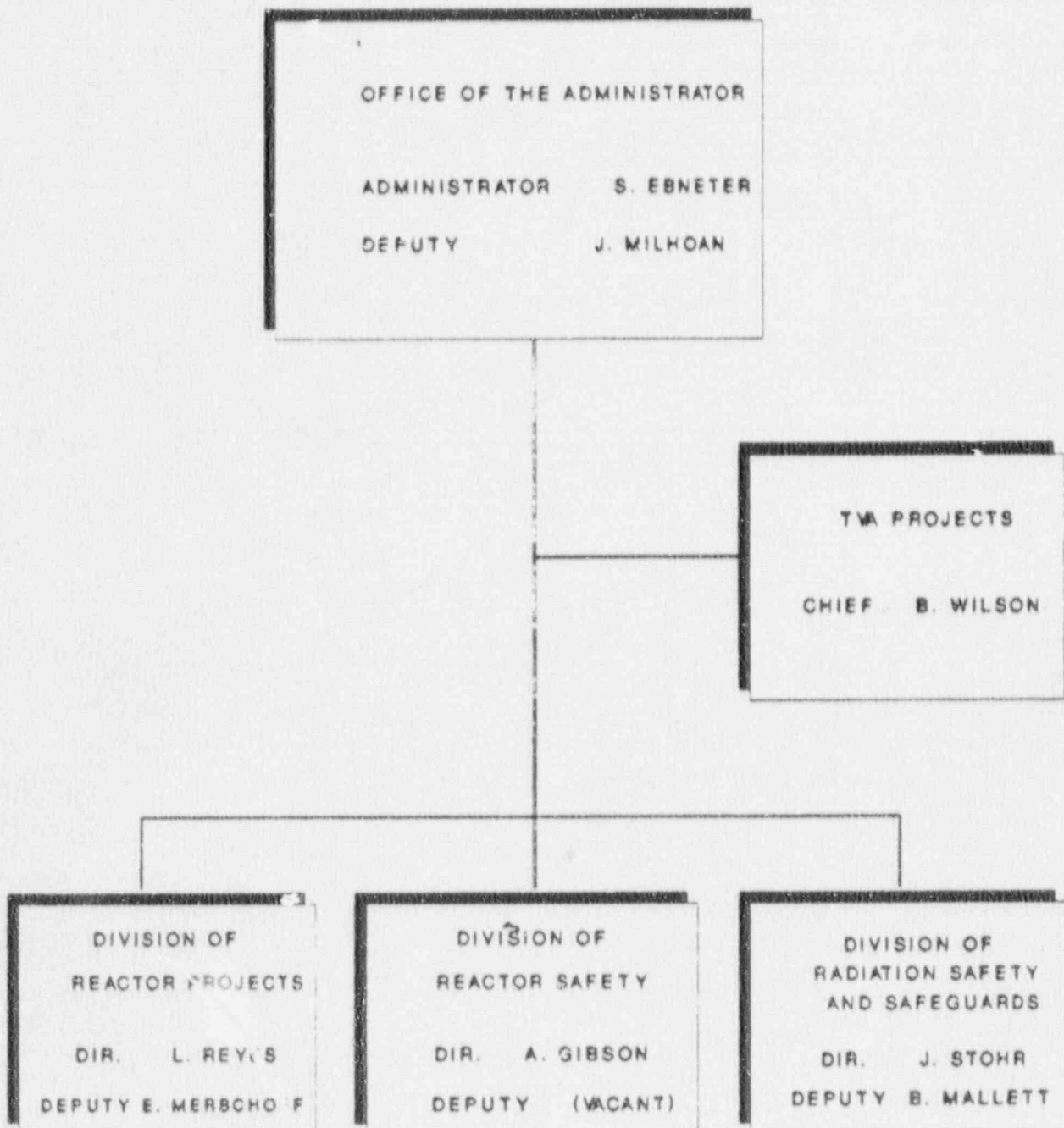
DECEMBER 19, 1990



# SALP PROGRAM OBJECTIVES

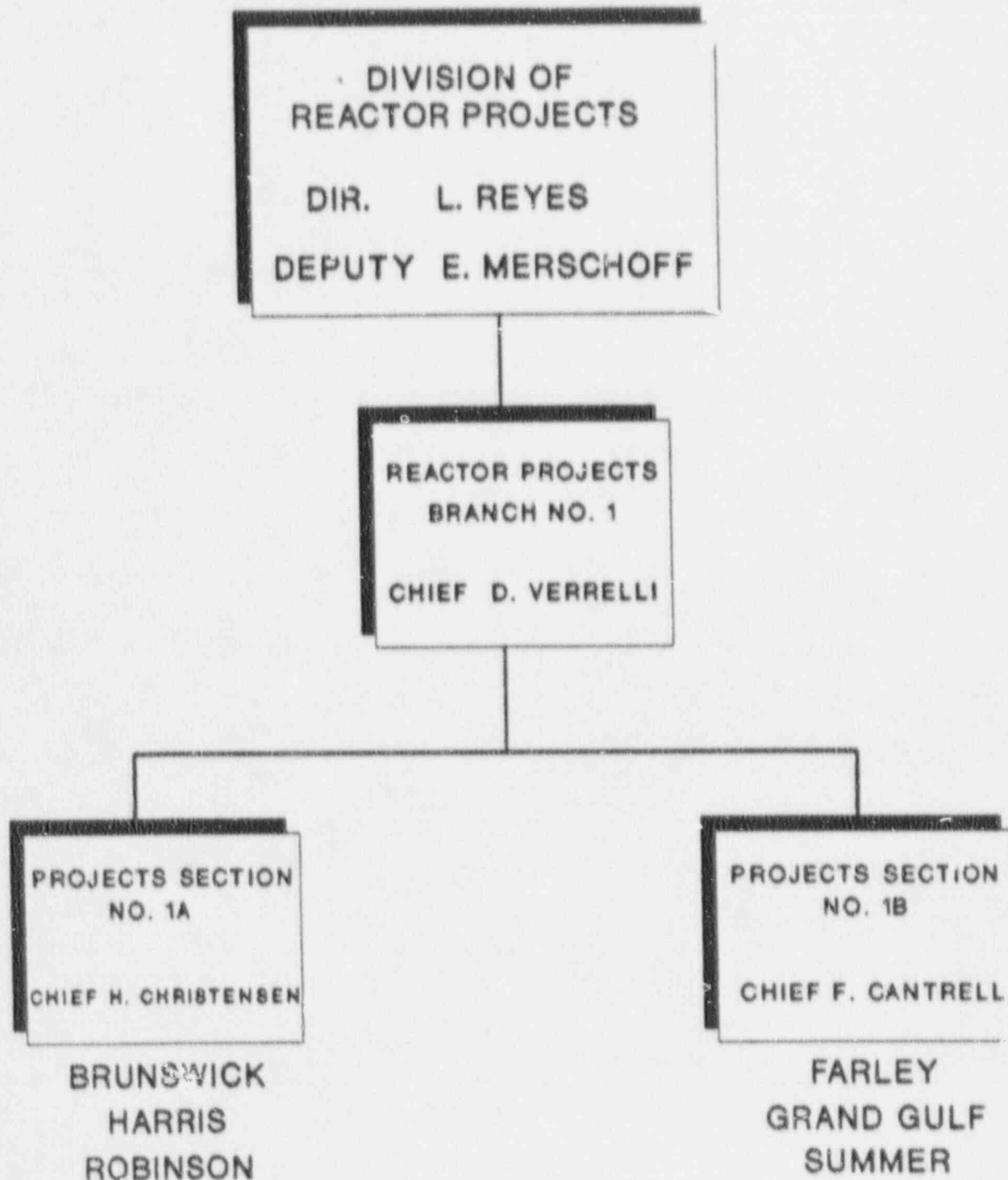
1. IDENTIFY TRENDS IN LICENSEE PERFORMANCE
2. PROVIDE A BASIS FOR ALLOCATION OF NRC RESOURCES
3. IMPROVE NRC REGULATORY PROGRAM

# REGION II ORGANIZATION





# DIVISION OF REACTOR PROJECTS ORGANIZATION



# NRR ORGANIZATION

OFFICE OF  
NUCLEAR REACTOR  
REGULATION  
DIR. T. MURLEY

ASSOC. DIRECTOR FOR  
PROJECTS  
J. PARTLOW

DIVISION OF  
REACTOR PROJECTS I/II  
S. VARGA, DIR. I/II  
G. LAINAS, ASST. DIR. II  
E. ADENSAM, DIR. II-I  
T. LE, PROJECT MANAGER  
BRUNSWICK

DIVISION OF  
REACTOR PROJECTS III/IV/V  
AND  
SPECIAL PROJECTS

ASSOC. DIRECTOR FOR  
INSPECTION AND  
TECHNICAL ASSESSMENT

DIVISION OF  
ENGINEERING  
TECHNOLOGY

DIVISION OF  
OPERATIONAL EVENTS  
ASSESSMENT

DIVISION OF  
REACTOR INSPECTION  
AND SAFEGUARDS

DIVISION OF RADIATION  
PROTECTION AND  
EMERGENCY PREPAREDNESS

DIVISION OF LICENSEE  
PERFORMANCE AND  
QUALITY EVALUATION

DIVISION OF  
SYSTEMS TECHNOLOGY

PERFORMANCE ANALYSIS AREAS  
FOR OPERATING REACTORS

- A. PLANT OPERATIONS
- B. RADIOLOGICAL CONTROLS
- C. MAINTENANCE/SURVEILLANCE
- D. EMERGENCY PREPAREDNESS
- E. SECURITY/SAFEGUARDS
- F. ENGINEERING/TECHNICAL SUPPORT
- G. SAFETY ASSESSMENT/QUALITY  
VERIFICATION

# EVALUATION CRITERIA

1. MANAGEMENT INVOLVEMENT AND CONTROL  
IN ASSURING QUALITY
2. APPROACH TO IDENTIFICATION AND  
RESOLUTION OF TECHNICAL ISSUES  
FROM A SAFETY STANDPOINT
3. ENFORCEMENT HISTORY
4. REPORTING, ANALYSIS AND CORRECTIVE  
ACTION OF REPORTABLE EVENTS
5. STAFFING (INCLUDING MANAGEMENT)
6. TRAINING EFFECTIVENESS AND  
QUALIFICATION

# AREA PERFORMANCE

## CATEGORY 1

LICENSEE MANAGEMENT ATTENTION TO AND INVOLVEMENT IN NUCLEAR SAFETY OR SAFEGUARDS ACTIVITIES RESULTED IN A SUPERIOR LEVEL OF PERFORMANCE. NRC WILL CONSIDER REDUCED LEVELS OF INSPECTION EFFORT.



# AREA PERFORMANCE

## CATEGORY 2

LICENSEE MANAGEMENT ATTENTION TO AND INVOLVEMENT IN NUCLEAR SAFETY OR SAFEGUARDS ACTIVITIES RESULTED IN A GOOD LEVEL OF PERFORMANCE. NRC WILL CONSIDER MAINTAINING NORMAL LEVELS OF INSPECTION EFFORT.



# AREA PERFORMANCE

## CATEGORY 3

LICENSEE MANAGEMENT ATTENTION TO AND INVOLVEMENT IN NUCLEAR SAFETY OR SAFEGUARDS ACTIVITIES RESULTED IN AN ACCEPTABLE LEVEL OF PERFORMANCE; HOWEVER, BECAUSE OF THE NRC'S CONCERN THAT A DECREASE IN PERFORMANCE MAY APPROACH OR REACH AN UNACCEPTABLE LEVEL, NRC WILL CONSIDER INCREASED LEVELS OF INSPECTION EFFORT.

# VIOLATION SUMMARY

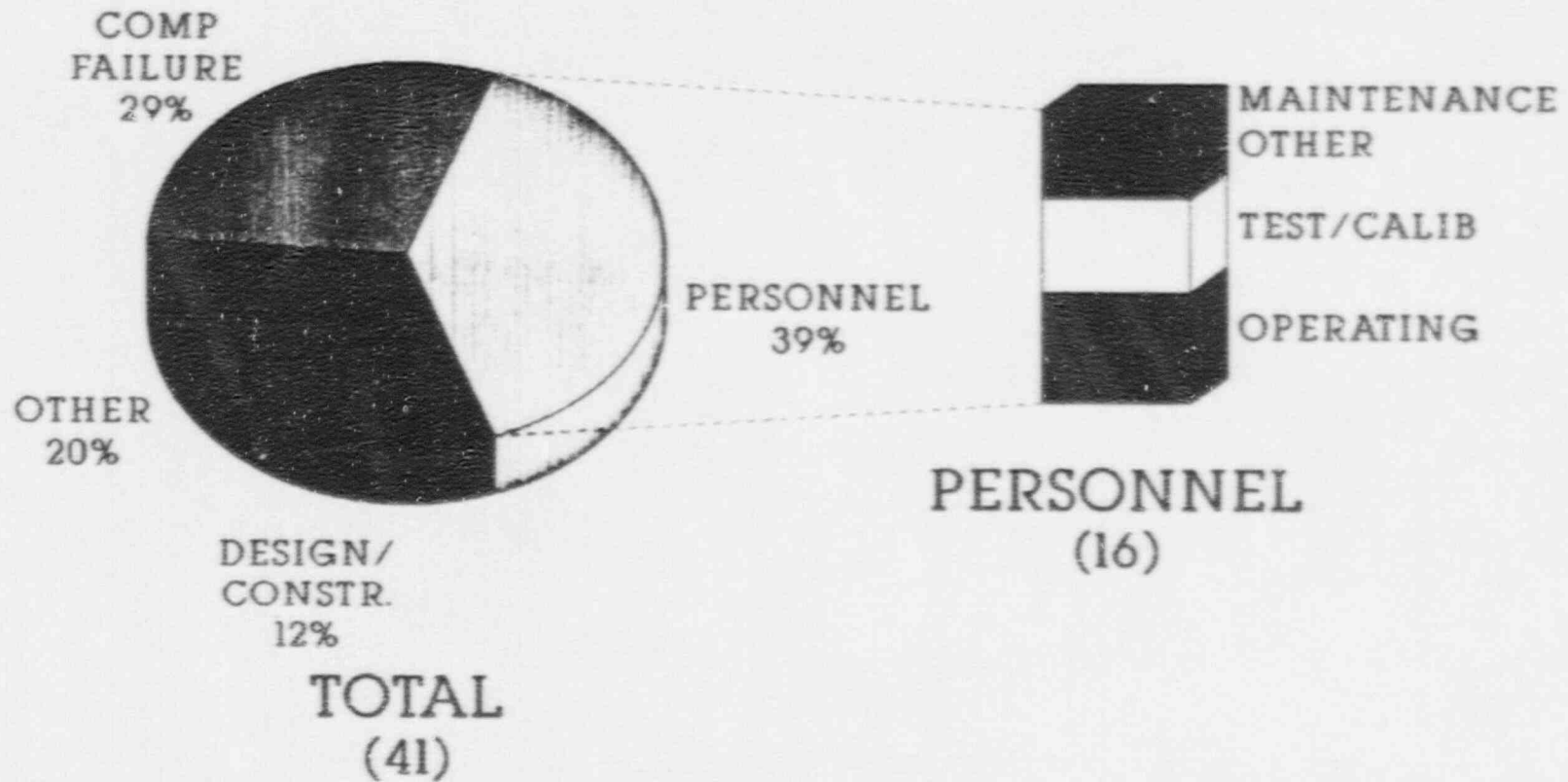
(CYCLE 9)

SEPTEMBER 1, 1989 THROUGH SEPTEMBER 30, 1990

	I	II	III	IV	V
BRUNSWICK 1	0	0	2	10	0
BRUNSWICK 2	0	0	2	13	2
REGION II AVE.	0	0	<1	10	<1
PER OPERATING UNIT FOR ASSESSMENT PERIOD					

# BRUNSWICK

SEPTEMBER 1, 1989 - SEPTEMBER 30, 1990  
(CYCLE 9)



## LERs

# OPERATIONS

## (CATEGORY 2)

OVERALL QUALITY OF OPERATIONS  
REMAINED GOOD

### STRENGTHS

- PLANT PERFORMANCE
- PLANT CONDITION
- CORRECTIVE ACTIONS

### CHALLENGES

- MANAGEMENT INVOLVEMENT
- OPERATOR PERFORMANCE
- PROCEDURES
- CONFIGURATION CONTROL

# RADIOLOGICAL CONTROL

## (CATEGORY 2)

OVERALL PERFORMANCE IN  
RADIOLOGICAL CONTROLS REMAINED  
GOOD

### STRENGTHS

- SOURCE MANAGEMENT
- DOSE MANAGEMENT
- PERSONNEL

### CHALLENGES

- PROCEDURAL COMPLIANCE
- SPENT FUEL SHIPMENTS

# MAINTENANCE/ SURVEILLANCE (CATEGORY 2 AND IMPROVING)

OVERALL QUALITY OF MAINTENANCE  
AND SURVEILLANCE IS GOOD AND  
HAS SHOWN AN IMPROVING TREND  
THROUGHOUT THE ASSESSMENT  
PERIOD

## STRENGTHS

- MATERIAL CONDITION
- STAFFING
- MANAGEMENT
- PROCEDURES

## CHALLENGES

- WORK CONTROL
- PROCEDURAL COMPLIANCE



# EMERGENCY PREPAREDNESS (CATEGORY 2)

PERFORMANCE IN THE AREA  
OF EP REMAINED GOOD

## STRENGTHS

- STAFFING
- EXERCISE SCENARIOS
- PERFORMANCE DURING ACTUAL  
EVENTS
- FACILITIES

## CHALLENGES

- CORRECTIVE ACTIONS
- MAINTAINING/IMPROVING  
PERFORMANCE

# SECURITY (CATEGORY 1)

PERFORMANCE IN THE AREA OF  
SECURITY HAS REMAINED EXCELLENT

## STRENGTHS

- MANAGEMENT
- STAFF
- HARDWARE
- PERFORMANCE

## CHALLENGES

- MAINTAINING PERFORMANCE

# ENGINEERING/ TECHNICAL SUPPORT CATEGORY 3

PERFORMANCE IN THIS AREA HAS  
DECLINED, AND ALTHOUGH  
ACCEPTABLE, REQUIRES ATTENTION

## IMPROVEMENTS

- INTEGRATED ACTION PLAN
- DESIGN BASIS RECONSTITUTION
- TECHNICAL SUPPORT
- SIMULATOR UPGRADES

## WEAKNESSES

- DESIGN CHANGES
- OPERATOR TRAINING
- USE OF CONTRACTORS

# SAFETY ASSESSMENT/ QUALITY VERIFICATION CATEGORY 2

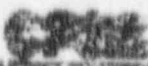
PERFORMANCE IN THIS AREA HAS  
REMAINED GOOD

## IMPROVEMENTS

- MANAGEMENT INVOLVEMENT
- SITE INCIDENT INVESTIGATIONS
- INTEGRATED ACTION PLAN
- ONSITE NUCLEAR SAFETY
- QUALITY ASSURANCE
- REGULATORY COMPLIANCE  
ACTIVITIES

## CHALLENGES

- SELF ASSESSMENT
- CORPORATE NUCLEAR SAFETY



**Carolina Power & Light Company**

P. O. Box 1881 • Raleigh, N. C. 27608

JAN 18 1991

SERIAL: NLS-91-007

R. A. WATSON  
Senior Vice President  
Nuclear Generation

United States Nuclear Regulatory Commission  
ATTENTION: Document Control Desk  
Washington, DC 20555

BRUNSWICK STEAM ELECTRIC PLANT, UNIT NOS. 1 AND 2  
DOCKET NOS. 50-325 & 50-324/LICENSE NOS. DPR-71 & DPR-62  
RESPONSE TO NRC SYSTEMATIC ASSESSMENT OF LICENSEE PERFORMANCE

Gentlemen:

Carolina Power & Light Company (CP&L) has reviewed the Initial Systematic Assessment of Licensee Performance (SALP) Board Report forwarded by your letter of December 7, 1990 (Inspection Report Nos. 50-325/90-38 and 50-324/90-38). This report provided results from the evaluation period September 1, 1989 through September 30, 1990.

The Company appreciates the NRC's assessment of our performance in the functional areas evaluated and will use your observations and findings summarized in the report in our efforts to continue improving our overall performance. We are in agreement with the NRC finding that the overall performance of the Brunswick Plant was good, but recognize the need to continue to strive for improved performance.

As discussed with you during our December 19, 1990 public meeting, we are committed to ensuring continued improvement through implementation of the Integrated Action Plan improvement programs and initiatives. The Company will implement actions and provide the management involvement necessary to assure good performance is maintained in the functional areas cited and to enhance performance in the engineering/technical support, operator training, and self assessment functions. We are confident that these improvements will be demonstrated during the upcoming SALP period.

Yours very truly,

*R A Watson*  
R. A. Watson

WRM/wrm (\cor\salsptr)

cc: Mr. S. D. Ebrster  
Mr. N. B. La  
Mr. R. L. Prevatte

910230319

ENCLOSURE 4

REVISION SHEET

<u>Page</u>	<u>Line</u>	<u>Initial Report Reads</u>	<u>Final Report Reads</u>
Coversheet	2	Initial SALP Report	Final SALP Report



ENCLOSURE  
INITIAL SALP REPORT

---

U. S. NUCLEAR REGULATORY COMMISSION  
REGION 11

---

SYSTEMATIC ASSESSMENT OF LICENSEE PERFORMANCE

INSPECTION REPORT NUMBER

50-325/90-38 and 50-324/90-38

CAROLINA POWER AND LIGHT

BRUNSWICK UNITS 1 AND 2

SEPTEMBER 1, 1989 - SEPTEMBER 30, 1990

SEE REVISION SHEET

ENCLOSURE  
FINAL SALP REPORT

---

U. S. NUCLEAR REGULATORY COMMISSION  
REGION II

---

SYSTEMATIC ASSESSMENT OF LICENSEE PERFORMANCE

INSPECTION REPORT NUMBER

50-325/90-38 and 50-324/90-38

CAROLINA POWER AND LIGHT

BRUNSWICK UNITS 1 AND 2

SEPTEMBER 1, 1989 - SEPTEMBER 30, 1990