



**Commonwealth Edison**

One First National Plaza, Chicago, Illinois  
Address Reply to: Post Office Box 767  
Chicago, Illinois 60690

November 19, 1982

Mr. Darrell G. Eisenhut, Director  
Division of Licensing  
U.S. Nuclear Regulatory Commission  
Washington, DC 20555

Subject: Zion Station Units 1 and 2  
NUREG 0737 Item II.B.1  
Reactor Coolant System Vents  
NRC Docket Nos. 50-295 and 50-304

- References (a): July 1, 1981, letter from  
L. O. DelGeorge to D. G. Eisenhut.
- (b): October 18, 1979, letter from  
Cordell Reed to D. G. Eisenhut.

Dear Mr. Eisenhut:

This is to provide additional information requested by your staff concerning the independence of power supplies to the reactor coolant vent valves.

Regarding reactor head vent valves, as stated in reference (a), the power supplies to the solenoid-operated vent valves are Class 1E, with parallel sets of valves wired to independent power trains. The power supplies have been indicated on Sargent and Lundy drawings M-956 and M-959, included in the Attachment to this letter.

Regarding the pressurizer PORVs and block valves, as stated in reference (b), the PORVs and their associated block valves are powered from separate emergency power buses. Therefore, we believe that the design meets the intent of both NUREG items II.B.1 and II.G.1. The diagrams included in the Attachment to his letter provide additional detail.

To the best of my knowledge and belief, the statements contained in this letter and in the attachment are true and correct. In some respects, these statements are not based on my personal knowledge but upon information furnished by other Commonwealth Edison employees. Such information has been reviewed in accordance with Company practice and I believe it to be reliable.

A046

D. G. Eisenhut

- 2 -

November 19, 1982

Please address questions regarding this matter to this office.

Very truly yours,

*F. G. Lentine*

F. G. Lentine  
Nuclear Licensing Administrator

lm

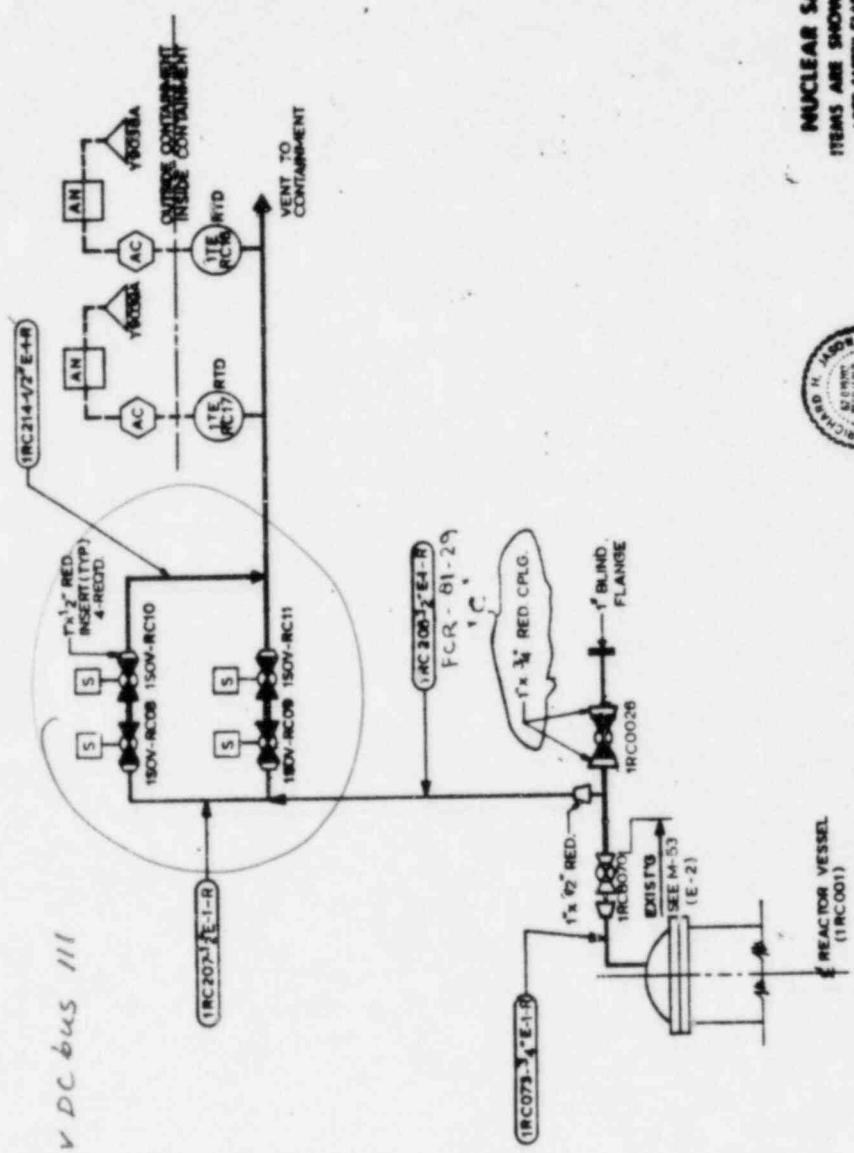
Attachment

5465N

Valve Powered from

150V RC08 } 125 V DC bus 011-1  
 150V RC10 }

150V RC09 } 125 V DC bus III  
 150V RC11 }



NUCLEAR SAFETY RELATED  
 ITEMS ARE SHOWN ON THIS DRAWING  
 FOR SAFETY CLASSIFICATION BY PERSON  
 EQUIPMENT, VALVE OR INSTRUMENT LIST 1



REV	DATE	BY	CHKD	APPROVED	PURPOSE	FILED
A	03-24-80	J. G. ...			FOR CONSTRUCTION (M-ZE-174-43)	
B	05-30-80	E. G. ...			FOR CONSTRUCTION PIPE REINFORCED (MOD NO. M-12-1-70-43)	
C	5-28-81	C. D. ...			REV. TYPE CONSTRUCTION (M-ZE-81-29) (M-22-1-74-4)	

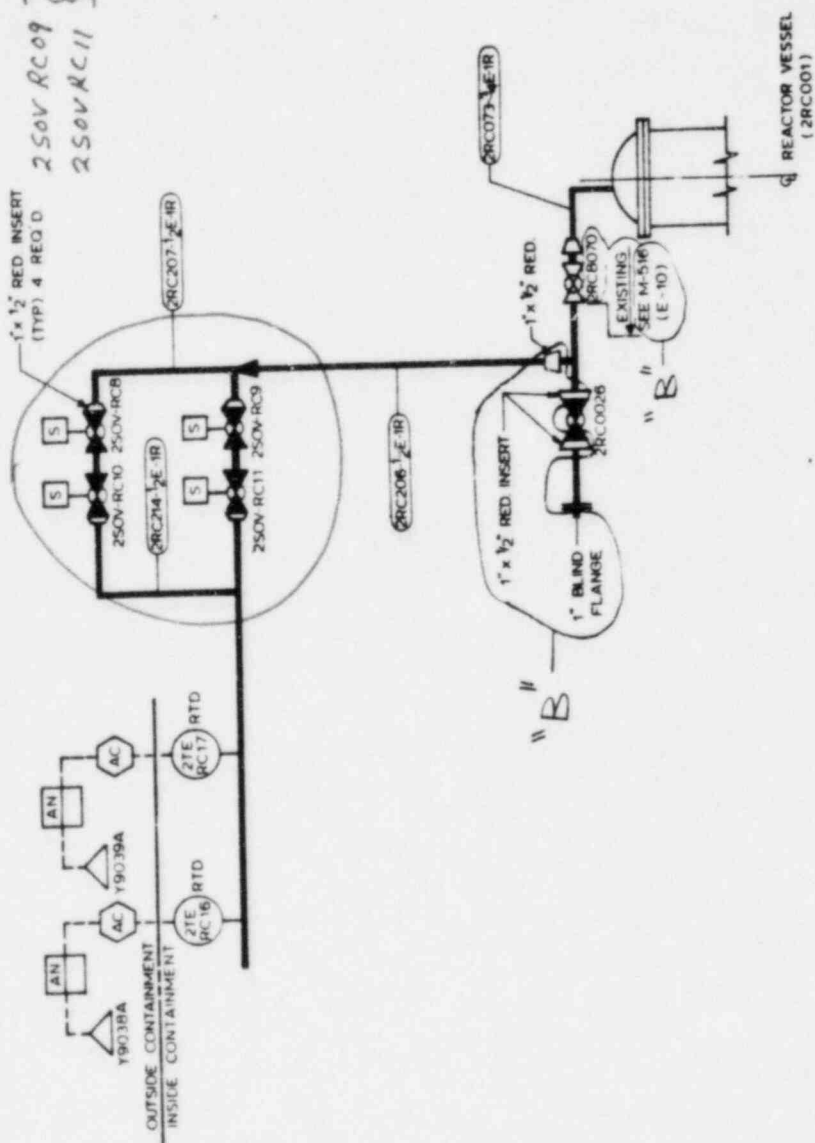
  

SCALE	NONE
PROJECT	B102
REACTOR VESSEL HEAD VENT SYSTEM DIAGRAM	
ZION STATION UNIT-1	
COMMONWEALTH EDISON CO.	
CHICAGO, ILLINOIS	
QUANTITY NO.	M-956
SHEET	OF C

ITEM II.B.1  
 ZION RESPONSE

Valve Powered from

250V RC08 } 125 V DC bus 011-2  
 250V RC10 }  
 250V RC09 } 125 VDC bus 211  
 250V RC11 }



**NUCLEAR SAFETY RELATED**  
 ITEMS ARE SHOWN ON THIS DRAWING  
 FOR SAFETY CLASSIFICATION SEE PIPING  
 EQUIPMENT, VALVE, OR INSTRUMENT LISTS

REV	DATE	BY	CHKD	PREPARED	APPROVED	DESCRIPTION
A	04-11-80	12	6	Carver	[Signature]	FOR CONSTRUCTION MOD NO M-22-2-79-43
B	05-30-80	12	6	Carver	[Signature]	FOR CONSTRUCTION PIPE REROUTED (MOD NO M22-2-79-43)

SCALE	NICONE	PROJECT	NO.
		6102	

REACTOR VESSEL HEAD VENT SYSTEM DIAGRAM	UNIT 2
ZION STATION	COMMONWEALTH EDISON CO
CHICAGO, ILLINOIS	

DRAWING RELEASE RECORD
PURPOSE
FOR CONSTRUCTION MOD NO M-22-2-79-43
FOR CONSTRUCTION PIPE REROUTED (MOD NO M22-2-79-43)

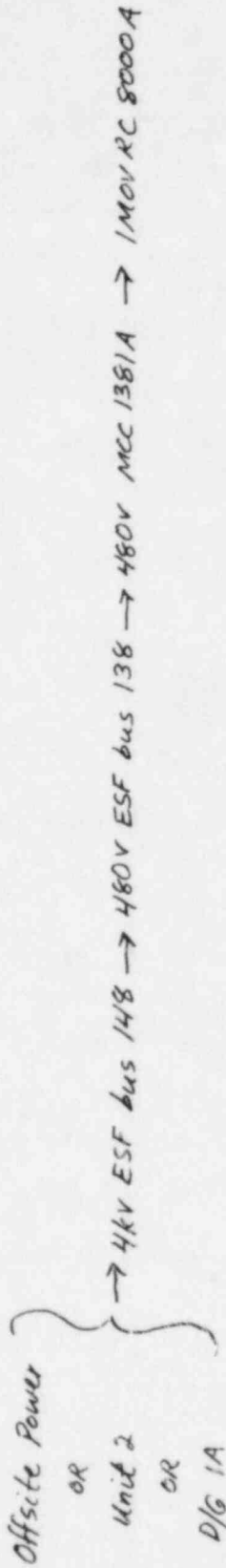
DATE	BY	CHKD	DESCRIPTION

**SAMBERT & LIBBY**  
 ENGINEERS

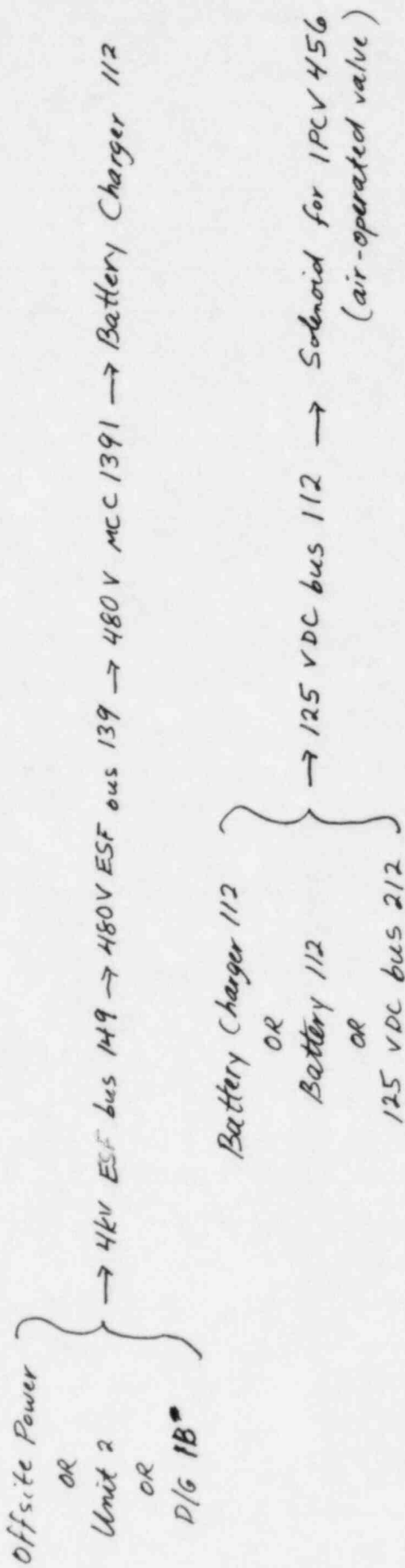
DRAWING NO. M-959  
 SHEET 1 OF 1

Power Supplies to Per. PORV's and Block Valves

PORV Block Valve 1MOVRC8000A:



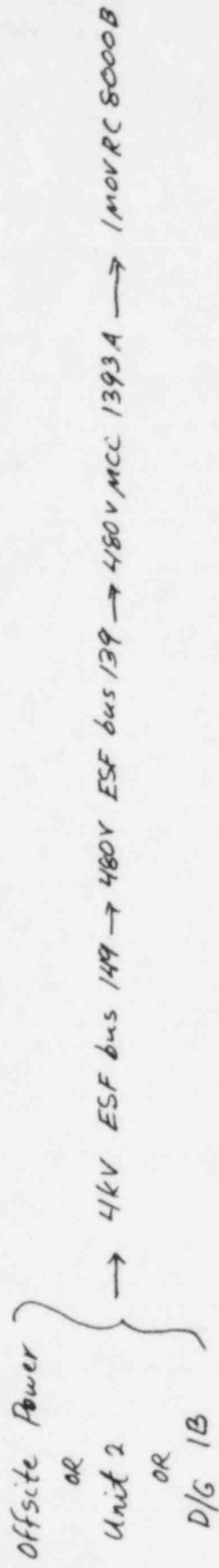
PORV 1PCV456:



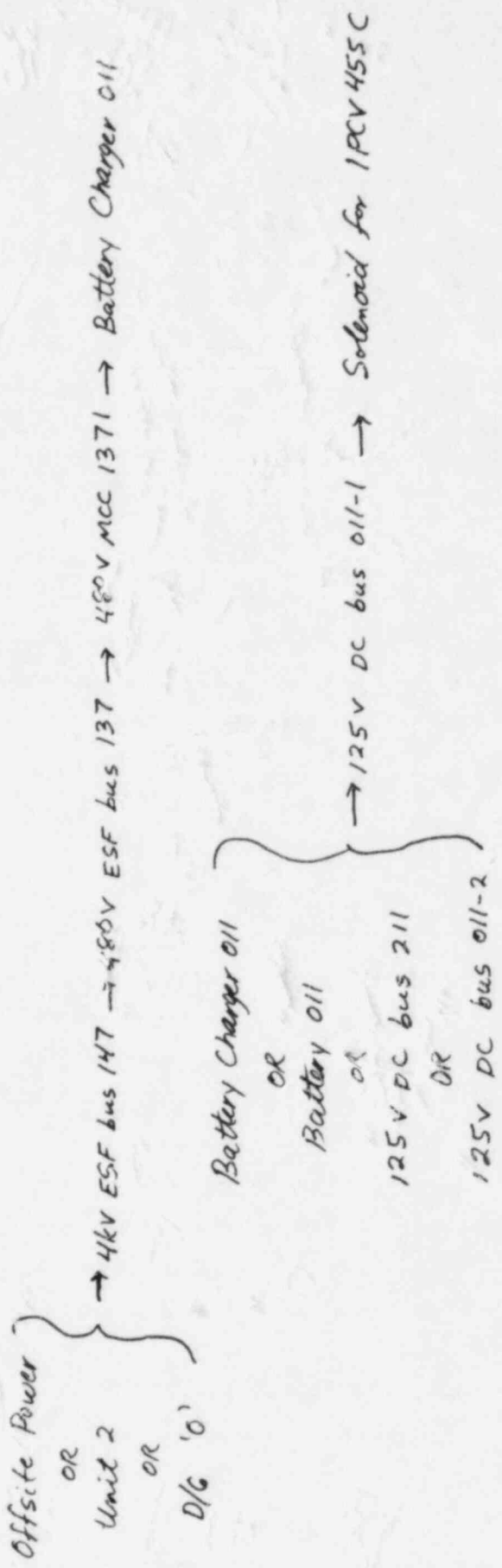
FMX 11/18/82

Power Supplies to Per. PORV's and Block Valves

PORV Block Valve 1MOVRC8000B :



PORV 1PCV 455C :



Feb 11/18/82

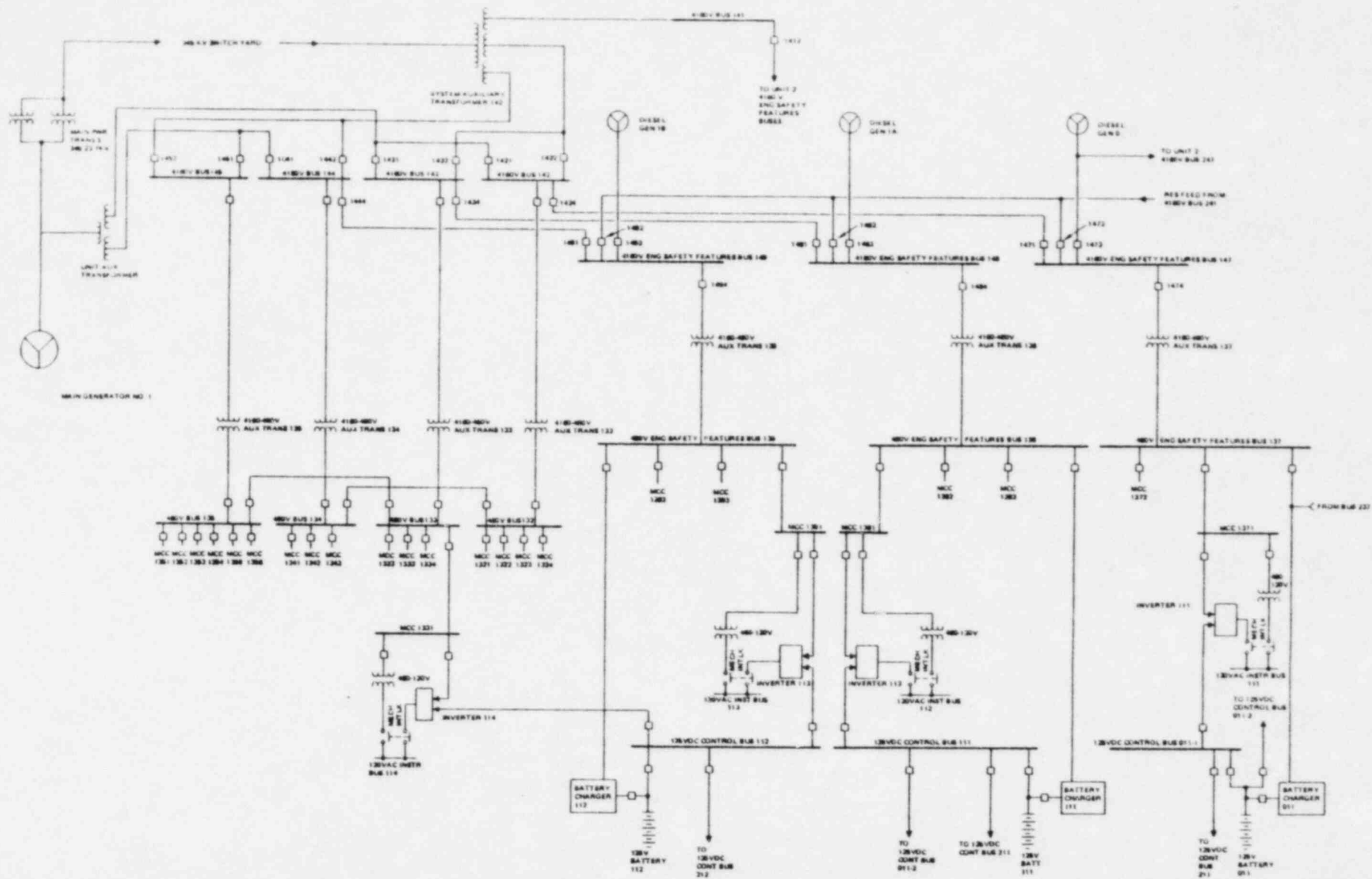


Figure 1.5.2.2.1-2. Zion Unit 1 Electric Power System Diagram

1.5-272

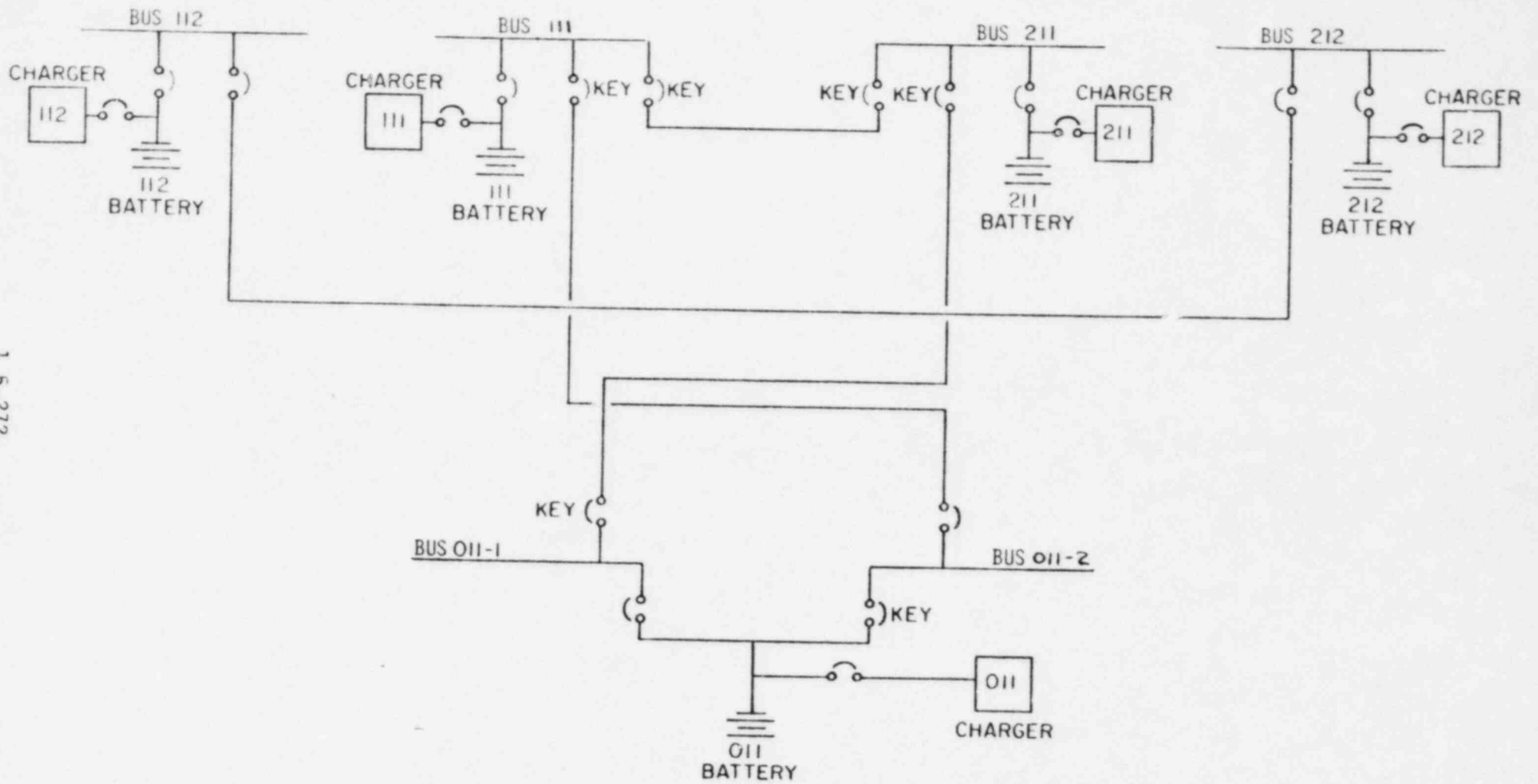


Figure 1.5.2.2.1-4. Zion DC Power Supply Interconnection Diagram