



Westinghouse  
Electric Corporation

Energy Systems

Nuclear and Advanced  
Technology Division

Box 2728  
Pittsburgh Pennsylvania 15230-2728

NS-NRC-91-3567  
PA-91-0222  
February 11, 1991

Mr. J. W. Roe, Director  
Division of Licensee Performance  
and Quality Evaluation  
Office of Nuclear Reactor Regulation  
U. S. Nuclear Regulatory Commission  
Mail Stop 10H1  
Washington, DC 20555

Dear Mr. Roe:

SUBJECT: REORGANIZATION

Pursuant to the requirement in Section 17.1.1 of WCAP-8370/7800, Revision 11A/7A, "Energy Systems Business Unit/Nuclear Fuel Business Unit Quality Assurance Plan," the Nuclear and Advanced Technology Division (NATD) Organization Chart is enclosed. The Nuclear Technology Operations Department has been eliminated. The administrative and control functions which the department had performed have been distributed to other organizations within NATD. The Product Assurance Manager now reports to the Engineering Technology Manager, who reports to the NATD General Manager.

These changes have no impact on the program since the commitments contained in WCAP-8370/7800 are not affected.

If you have any questions concerning the information in this letter or enclosures, please contact Mrs. H. G. (Hedy) Abromovitz, Manager of Product Assurance, Nuclear and Advanced Technology Division, at (412) 256-6155.

Very truly yours,

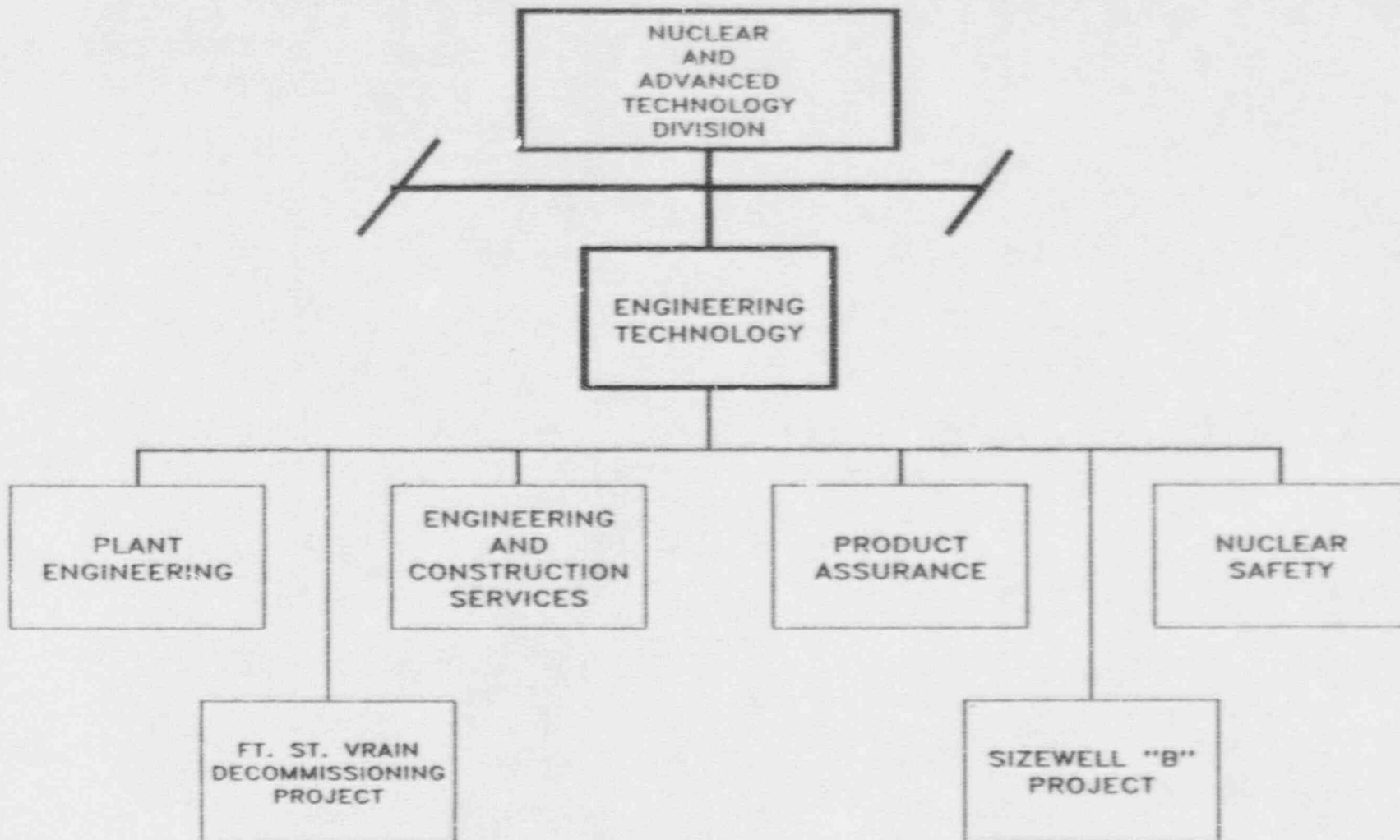
W. J. Johnson, Manager  
Nuclear Safety Department

RDP/elm  
Enclosures

9102220170 910211  
PDR TOPRP EMVWEST  
C PDR

210030

Q005  
11



NUCLEAR AND ADVANCED TECHNOLOGY DIVISION  
ORGANIZATION CHART