



January 21, 1991
ML-91-004

License No. SNM-1067
Docket No. 70/1100

Mr. Sean Soong
Fuel Cycle Safety Branch
Office of Nuclear Material Safety and Safeguards
U.S. Nuclear Regulatory Commission
One White Flint North
11555 Rockville Pike
Rockville, Maryland 20852

Subject: Supplemental Information for Centrifuge License
Amendment Request

Reference: Letter, J. Conant (C-E) to C. Haughney (NRC),
LD-90-081, dated October 25, 1990

Dear Mr. Soong:

Enclosed, please find photocopies of the centrifuge
equipment that we are relocating and for which we have
requested approval (Reference) to operate in its new
location. This move is part of our facility revitalization
program.

If you have any questions, please contact me or Mr. Chuck
Molnar of my staff at (203) 285-5205.

Very truly yours,

COMBUSTION ENGINEERING, INC.

John F. Conant
Manager
Nuclear Materials Licensing

JFC:k11

cc: J. Roth (NRC)

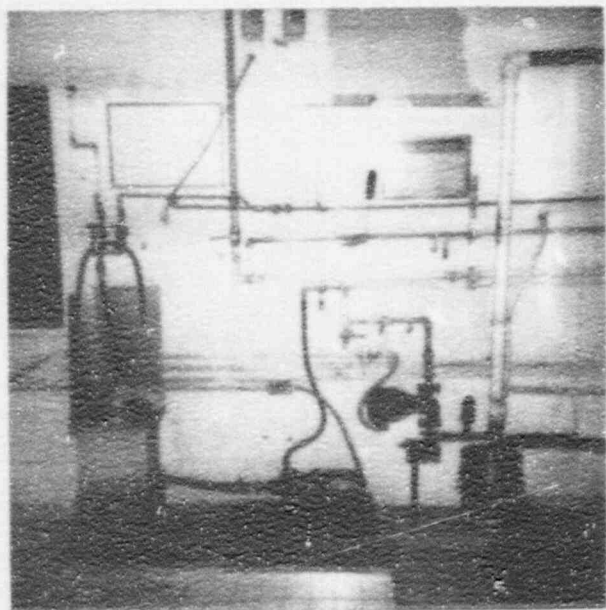
ABB Combustion Engineering Nuclear Power

9101240141 910121
PDR ADOCK 07001100
C PDR

1000 Prospect Hill Road
Post Office Box 500
Windsor, Connecticut 06095-0500

Telephone (203) 688-1911
Fax (203) 285-9512
Telex 98297 COMBEN WSOR

NF12



A

PHOTO A: Receptacle tank, pump and transfer lines (with sump tank at lower right) to centrifuge.



B

PHOTO B: Centrifuge motor (at bottom left) and centrifuge tank (at center behind sheet metal) in the centrifuge hood.



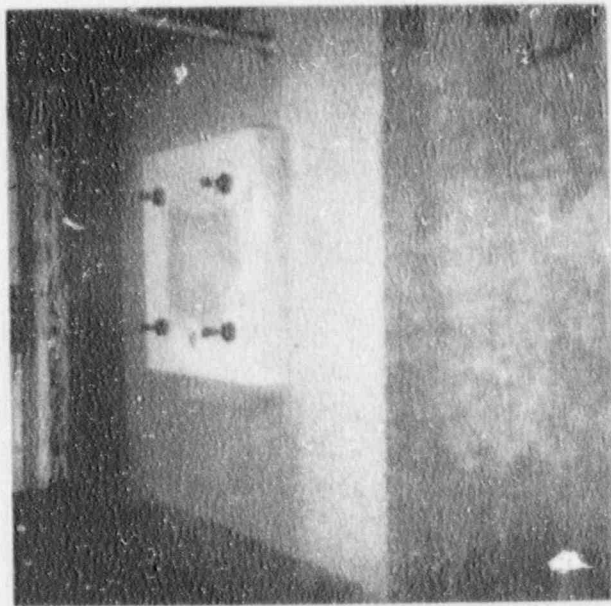
C

PHOTO C: Slant tank, tilted to front right corner for drainage to waste water disposal tanks. (This photo overlaps with Photo B.) Existing slant tank shown. A newly fabricated slant tank will be used in the relocated position.



E

PHOTO E: Overview of existing centrifuge operations.



D

PHOTO D: Support slab for centrifuge at new location.