

*File Admin*

*To: R. Williams*

METROPOLITAN EDISON COMPANY

Subsidiary of General Public Utilities Corporation

*741 JJ 11/19*

Subject TMI Generation Group Organization

Location TMI/Trailer 201

To TMI Generation Group  
TMI Contractors

Date November 16, 1979

By memorandum of July 30, 1979, Mr. H. M. Dieckamp announced the integration of personnel in the Generation Divisions of Met-Ed and GPUSC to form the TMI Generation Group. The Group's organization was described in general terms and the Directors of the Group have issued a number of memoranda since then to further explain the structure of the various segments of the TMI Generation Group. As we have gained experience with the initial functioning of the Group, within the framework established by these actions, we have realized that some further adjustments are needed. This process has been aided by an extensive review of the Group's functions, responsibilities, interface requirements, and problems as perceived by the managers in the Group, undertaken by Mr. F. Glickman and by a review of the Radiological Controls Program conducted by Mr. M. E. Miles of Basic Energy Technology Associates. We also believe these changes address problems identified by various investigations conducted since the accident.

The attached organization charts provide definition of the realignment of responsibilities within the staffs for TMI Units 1 and 2 of the TMI Generation Group. The major changes are:

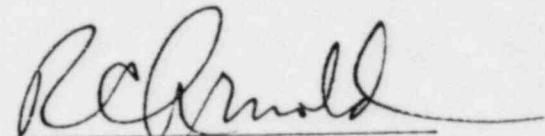
1. The line management responsibilities for TMI Units 1 and 2 are completely separated.
2. TMI Unit-2 Radiological Controls Department will report directly to the head of the TMI Generation Group.
3. Each TMI unit is, to the maximum extent feasible, to have direct control of the resources necessary for effective and safe conduct of plant activities. Organizational structures for each unit reflect this policy and implementation of this policy is the reason for no longer having a site-wide maintenance component to the organization.
4. Mr. R. F. Wilson will devote his full efforts to the direction and management of the TMI Unit-2 activities.

(continued)

Subject: TMI Generation Group Organization

November 16, 1979

While we expect the effort by Mr. Glickman may lead to definition of staffing requirements for fulfilling additional functions by the TMI Generation Group, we do not expect any further fundamental changes in the operational and technical responsibilities, functions and interfaces within the Group. I appreciate very much the constructive and supportive attitude taken by everyone during this very difficult period. We are confident that these changes will facilitate projecting the spirit of professionalism we all desire and will improve the effectiveness of the efforts of all of us.



R. C. Arnold  
Senior Vice President

RCA:ves  
attachs.

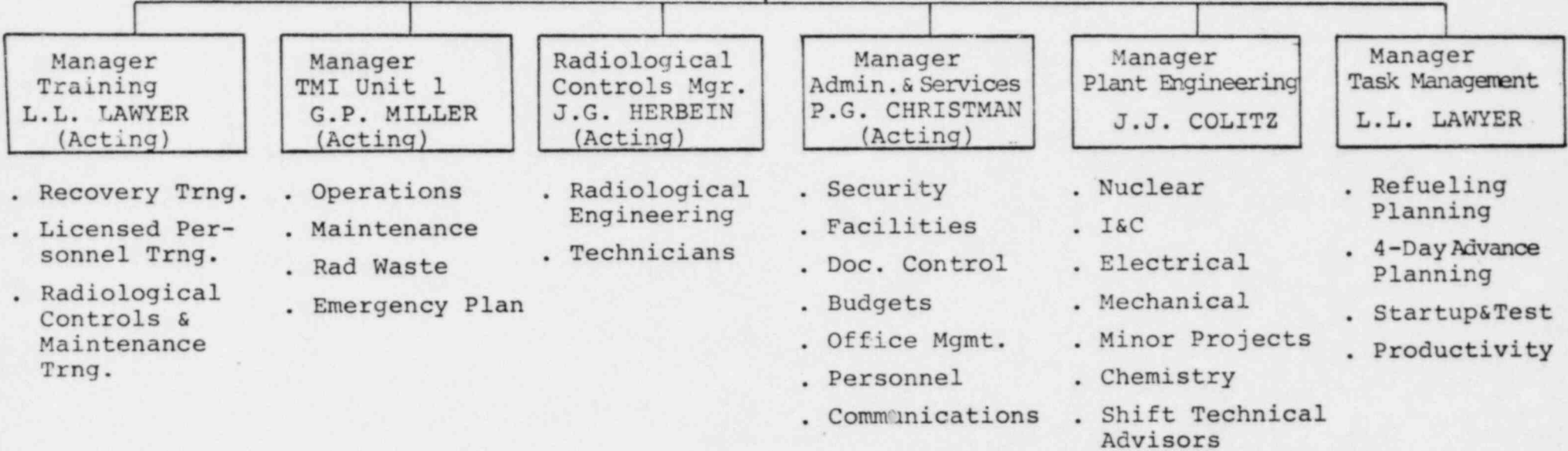
cc: System Officers  
GPUSC Division Heads  
~~J. T. Collins - NRC~~

TMI UNIT 1

J.G. HERBEIN  
V.P.

Unit 1 Recovery  
R.L. WILLIAMS/  
G.J. TROFFER

Staff Assistant  
P.G. CHRISTMAN



TMI UNIT 2 SITE OPERATIONS

J. J. BARTON

director

(vacant) deputy

J.J. Barton manager Operations

J.J. Chwastyk supervisor Plant Operations

C.P. Deltete supervisor Processing Operations

T.R. Block supervisor (acting) Decontamination

G.A. Kunder supervisor Technical Specifications  
Compliance (PORC & RORC  
Chairman)

(vacant) supervisor Operations Procedures

S. Levin manager Maintenance

R.E. Sieglitz supervisor Corrective Maintenance

J.J. McGarry supervisor Preventive Maintenance

(vacant) supervisor Plant Equipment Layup

J.C. Abromitis supervisor Utility Maintenance

(vacant) supervisor Maintenance Planning/  
Scheduling

B. Elam manager Plant Engineering

(vacant) supervisor Systems Support Eng.

(vacant) supervisor Plant and Radiochemistry

(vacant) supervisor Startup & Testing

TMI UNIT 2

R. F. WILSON

director

\_\_\_\_ M. Morrell

special projects

\_\_\_\_ (vacant)

deputy

- . R&D
- . Budget Schedule
- . Staff

\_\_\_\_ J. J. Barton

director Site Operations

\_\_\_\_ (vacant)

deputy

- . Operations
- . Maintenance
- . Plant Engineering
- . Processing Support
- . Operations Services
- . Safety Reviews

\_\_\_\_ R.F. Wilson

manager, (acting) Project Operations  
. Bechtel

\_\_\_\_ M.K. Pastor

manager, Administration & Services

\_\_\_\_ J.C. DeVine

manager, Recovery Engineering

\_\_\_\_ (vacant)

QA/QC manager

\_\_\_\_ E.D. Fuller

supervisor, (acting) Licensing

11/16/79

TMI GENERATION GROUP

R. C. ARNOLD

- Sr. v.p. Met-Ed  
v.p. GPUSC

J.G. Herbein

v.p. Met-Ed  
director TMI Unit-1  
Attachment 2

R.F. Wilson

director (acting) TMI-2  
Attachment 3

R.W. Heward, Jr.

manager - TMI Unit-2 Radiological  
Controls

R.C. Arnold

director, (acting) Technical Functions

J.R. Thorpe

director, Environment, Health and  
Safety

R.L. Long

director, Reliability Engineering

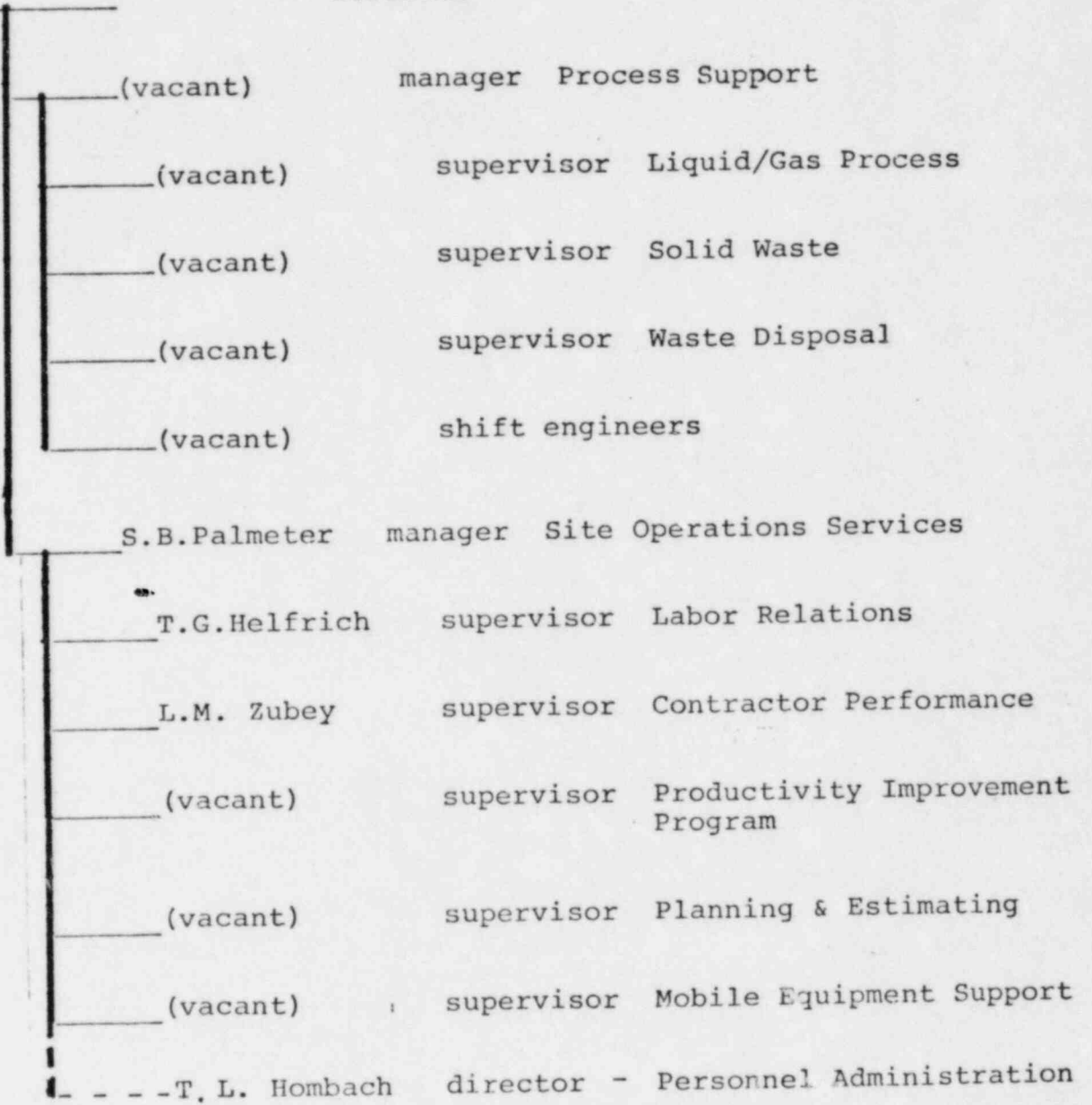
J.G. Hover

manager - Management Services

TMI Unit 2 Site Operations (continued)

J. J. BARTON

director





TMI UNIT 2 ADMINISTRATION AND SERVICES

M. K. PASTOR

manager

D.F. Limroth

supervisor Administrative Controls

(vacant)

supervisor Document Control

(vacant)

supervisor Training

(vacant)

supervisor First Aid/Medical

(vacant)

supervisor Recovery Reports

(vacant)

supervisor Security

J. Troebliker

director - Personnel Administration