

RTI Inc.

108 LAKE DENMARK ROAD, ROCKAWAY, NJ 07866
(201) 625-8400 • FAX (201) 625-7820

030-07022

P-3

September 18, 1989

Mr. John White
Nuclear Materials Safety Branch
United States Nuclear Regulatory Commission
475 Allendale Road
King of Prussia, PA 19406

Re: License No. 29-13613 02

Dear Mr. White:

As indicated in your letter of July 18, 1989, we are requesting an amendment to our license Condition 11.D. Specifically, we request that Condition 11.D be deleted and the following be inserted: The Radiation Safety Officer for this license is John Schlecht.

Mr. Schlecht has completed more than 3 months of actual operating experience as of September 15, 1989. Please refer to our letters of May 1, 1989 and July 3, 1989 for additional information regarding Mr. Schlecht's qualifications and experience.

With the naming of Mr. Schlecht as Permanent RSO, the services of Mr. Michael Buring, consultant, can be reduced to be available on call until the date when Mr. Shapiro, our designated Corporate RSO, can complete his qualifications.

Upon approval of the above change, we believe the current license Condition 20B be deleted in its entirety. We will continue to comply with the requirements of Condition 20A.

We have concern with Condition 20C. If none of these persons are available to perform these audits, we would be in non-compliance with the license. We are therefore requesting that Condition 20C be amended to add:

In the event none of these individuals are available, approval for an alternate may be requested and given by telephone from the NRC King of Prussia office.

9101220391 900913
PDR FOIA
JONES90-334 PDR

OFFICIAL RECORD COPY ML10

FAX COPY REC'D

SEP 19 1989

B/45

111104

We have included as an attachment to this letter a revised PTI Inc. organization chart depicting the above described change. It would be appreciated if these changes could be expediently handled.

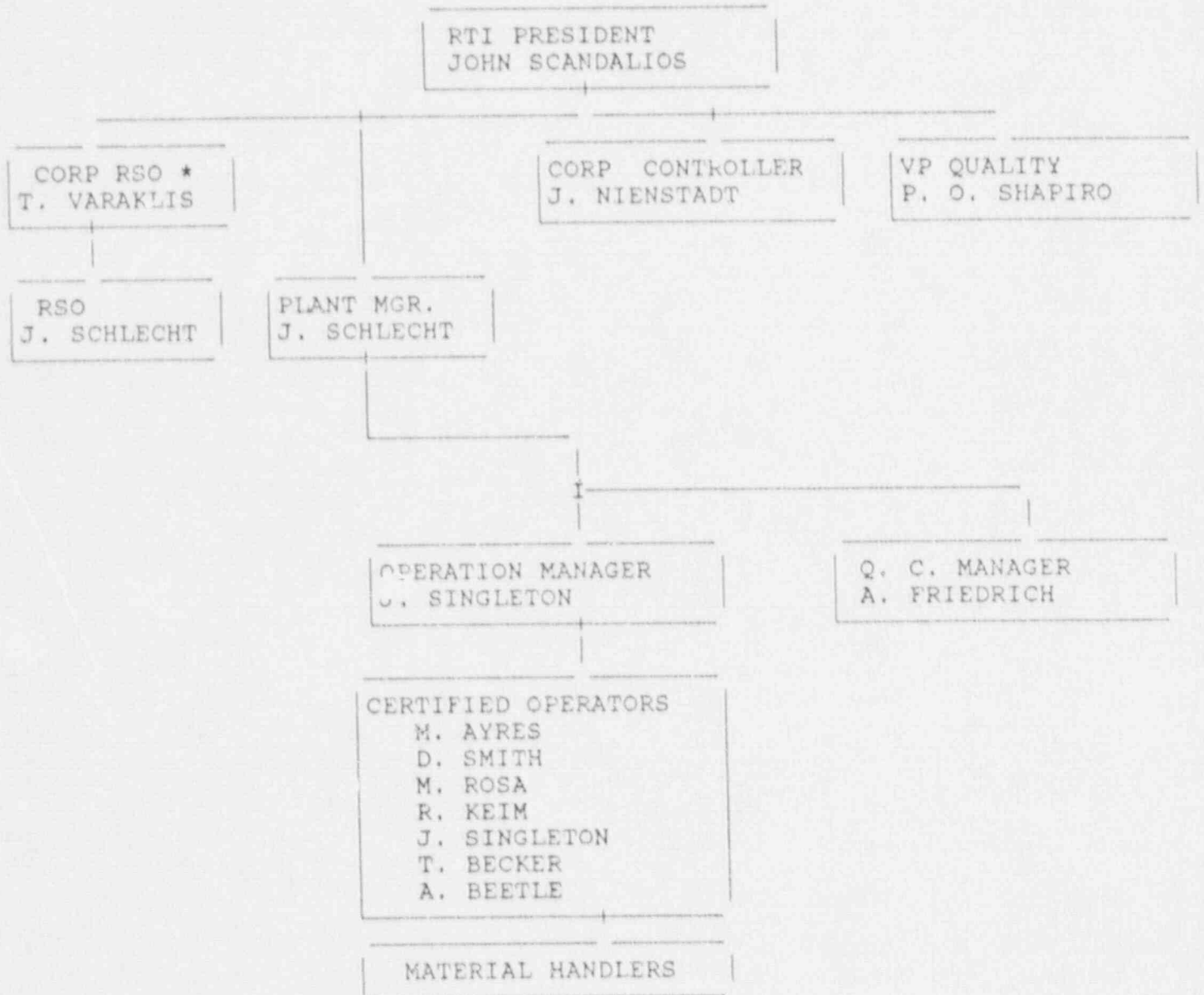
Very truly yours,


John N. Scandalios

JNS:ak

PROCESS TECHNOLOGY OF NORTH JERSEY

ORGANIZATIONAL CHART



September 15, 1989

*On a Consultant Capacity

111104

OFFICIAL RECORD COPY ML18