

Nov 1 1982

NORTHROP

Director of Nuclear Reactor Regulation
U.S. Nuclear Regulatory Commission
Washington, D. C. 20555

Attention: Director

Enclosure: (1) Northrop Reactor Emergency Plan
July, 1982

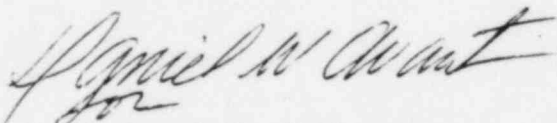
Gentlemen:

Enclosed are ten (10) copies of enclosure (1), Northrop Reactor Emergency Plan. This plan is submitted in conformance with 10 CFR 50.54(r). Certain enclosed information will fall under the restriction of 10 CFR 2.70(d). This emergency plan will be implemented within a reasonable time after approval of the plan by the U.S. Nuclear Regulatory Commission.

All correspondence related to the above enclosures should be directed to the undersigned at the following address:

Northrop Corporation ZQF
Northrop Research and Technology Center
One Research Park
Palos Verdes Peninsula, CA. 90274

Sincerely,



(Dan Avant, Executive Secretary
Corporate Radiation Committee)

W. E. Crandall, Chairman
Corporate Radiation Committee

WEC:rb

X009
s
1/10

REGULATORY INFORMATION DISTRIBUTION SYSTEM (RIDS)

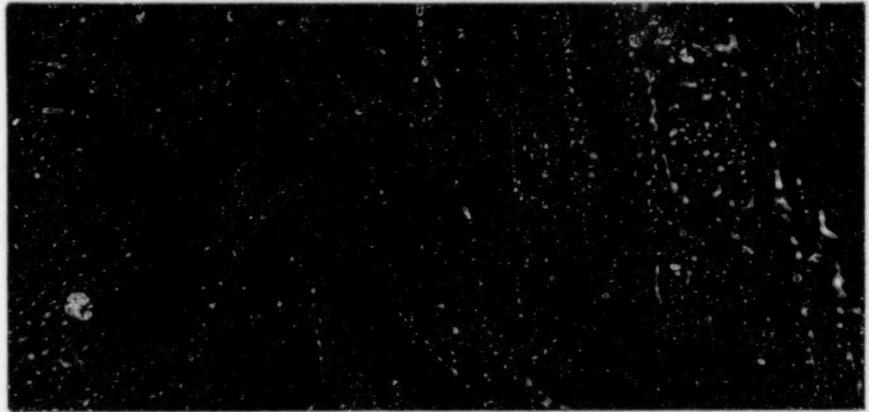
ACCESSION NBR: ~~8211010094~~ DOC. DATE: 82/11/01 NOTARIZED: NO DOCKET #
 FACIL: 50-187 Space Radiation Research Reactor, Northrop Corp. Labo 05000187
 AUTH. NAME AUTHOR AFFILIATION
 CRANDALL, W.E. Northrop Corp.
 RECIPIENT AFFILIATION
 Office of Nuclear Reactor Regulation, Director

SUBJECT: Forwards Central Files version of emergency plan.

DISTRIBUTION CODE: X009S COPIES RECEIVED: LTR 1 ENCL 10 SIZE: 1+27
 TITLE: Critical/Test/Research Facility: Emery Plans (CF)

NOTES:

	RECIPIENT			COPIES			RECIPIENT			COPIES		
	ID	CODE/NAME		LT	TR	ENCL	ID	CODE/NAME		LT	TR	ENCL
	NRR	SSPB BC	01	1		1	NRR	SSPB LA		1		0
INTERNAL:	ADM/DRR		02	1		1	FEMA	TECH HAZ09		1		1
	IE/DEP	DIR		1		0	IE/DEP	EPLB	04	3		3
	REG	FILE	03	1		1	RGNS		07	2		2



NORTHROP

Research and Technology Center