

80A0482

SHOREHAM NUCLEAR
POWER STATION
UNIT I
PRESERVICE INSPECTION
PROGRAM PLAN

PREPARED FOR
LONG ISLAND LIGHTING COMPANY
HICKSVILLE, NY

CONTROLLED COPY
VALID ONLY IF THIS STAMP IS RED

BY
NUCLEAR ENERGY SERVICES, INC.
DANBURY, CT

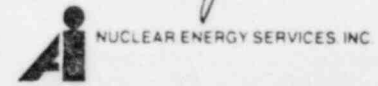
REV. NO.	DATE
0	2-17-78
1	7-11-79
2	4-21-80
3	6/30/80
4	9/5/80
5	12/2/80
6	2/16/81

REV. NO.	DATE
7	12/16/81
8	6/23/82
9	8/24/82

PREPARED BY *Albertuzel*
Shoreham ISI Proj. Mgr

APPROVED BY *W. J. Mann for L.I.*
ISI Program Manager

J. S. La Guardia
QA Manager



REV. NO.	DATE	PAGE NO.	DESCRIPTION	APPROVAL
6	2/16/81		Revise Hanger Maps and Tables.	<i>Al Shull</i>
			Revise Appendix L. Incorporate as-built information. (See CRA 1724)	
7	12/16/81		Revise Appendices D and E to reflect as-built information. (See CRA 2144)	<i>MG Dignel</i>
8	6/23/82		Incorporate field changes into RPV Program Plan. Incorporate appendices D-1, D-2, E-1, and E-2. (See CRA 2618)	<i>MG Dignel</i>
9	8/24/82		Revise appendices D-1 and D-2 (See CRA 2747)	<i>Albert A. Shull</i>

System: Main Steam
 Ref. Dwg. 03-04W
 CC2 Preservice Inspection

PROGRAM PLAN AND SCHEDULE

Shoreham

By: MJD / 8/3/82
 App: AK / 8/4/82
 Rev. 9 Page 1 of 23

ITEM NO.	COMPONENT IDENTIFICATION	COMPONENT DESCRIPTION	PROCEDURE NUMBER	CALIBRATION BLOCK (If applicable)	CODE CATEGORY	CODE EXAM METHOD	ZONE NO.	REMARKS
1	N11-NS001-BW16	Valve AOV-082A to 24" Pipe Weld	80A0481	24-080-CS	N/A	UT	IV	
2	N11-IC-142-FW13	24" Pipe to Ell Weld	80A0481	24-080-CS	N/A	UT	IV	
3	N11-IC-142-FW6	Ell to 24" Pipe Weld	80A0481	24-080-CS	N/A	UT	IV	
4	N11-C-7001 A-L	24" Pipe to Balance Header Weld	80A0481	24-080-CS	N/A	UT	IV	
5	N11-C-7001 A-G	Balance Header to 24" Pipe Weld	80A0481	24-080-CS	N/A	UT	IV	
6	N11-IC-142-FW11	24" Pipe to MSV 1 Weld	80A0481	24-080-CS	N/A	UT	IV	
7	N11-NS002-BW13	Valve AOV-082B to 24" Pipe Weld	80A0481	24-080-CS	N/A	UT	IV	
8	N11-568A	24" Pipe to Ell Weld	80A0481	24-080-CS	N/A	UT	IV	
9	N11-IC-143-FW3	Ell to 24" Pipe Weld	80A0481	24-080-CS	N/A	UT	IV	



PROGRAM PLAN AND SCHEDULE

System: Main Steam
Ref. Dwg. 03-04W
CC2 Preservice Inspection

Shoreham

By: MJD / 8/3/82
App: AIC / 8/4/82
Rev. ⁹ Page 2 of 23

ITEM NO.	COMPONENT IDENTIFICATION	COMPONENT DESCRIPTION	PROCEDURE NUMBER	CALIBRATION BLOCK (If applicable)	CODE CATEGORY	CODE EXAM METHOD	ZONE NO.	REMARKS
10	N11-1836-B	24" Pipe to Ell Weld	80A0481	24-080-CS	N/A	UT	IV	
11	N11-IC-143-FW7	Ell to 24" Pipe Weld	80A0481	24-080-CS	N/A	UT	IV	
12	N11-C-7001 A-K	24" Pipe to Balance Header Weld	80A0481	24-080-CS	N/A	UT	IV	
13	N11-C-7001 A-F	Balance Header to 24" Pipe Weld	80A0481	24-080-CS	N/A	UT	IV	
14	N11-IC-143-FW12	24" Pipe to MSV2 Weld	80A0481	24-080-CS	N/A	UT	IV	
15	N11-NS003-BW13	Valve AOV-082C to 24" Pipe Weld	80A0481	24-080-CS	N/A	UT	IV	
16	N11-577A	24" Pipe to Ell Weld	80A0481	24-080-CS	N/A	UT	IV	
17	N11-IC-144-FW4	Ell to 24" Pipe Weld	80A0481	24-080-CS	N/A	UT	IV	
18	N11-IC-144-FW6	Ell to 24" Pipe Weld	80A0481	24-080-CS	N/A	UT	IV	

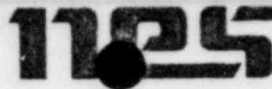
PROGRAM PLAN AND SCHEDULE

System: Main Steam
 Ref. Dwg. 03-04W
 CC2 Preservice Inspection

Shoreham

By: MJD / 8/3/82
 App: AIC / 18/4/82
 Rev. 7 Page 3 of 23

ITEM NO.	COMPONENT IDENTIFICATION	COMPONENT DESCRIPTION	PROCEDURE NUMBER	CALIBRATION BLOCK (If applicable)	CODE CATEGORY	CODE EXAM METHOD	ZONE NO.	REMARKS
19	N11-C-7001 A-J	24" Pipe to Balance Header Weld	80A0481	24-080-CS	N/A	UT	IV	
20	N11-C-7001 A-E	Balance Header to 24" Pipe Weld	80A0481	24-080-CS	N/A	UT	IV	
21	N11-IC-144-FW11	24" Pipe to MSV3 Weld	80A0481	24-080-CS	N/A	UT	IV	
22	N11-NS004-BW13	Valve AOV-082D to 24" Pipe Weld	80A0481	24-080-CS	N/A	UT	IV	
23	N11-IC-554-FW6	Ell to 24" Pipe Weld	80A0481	24-080-CS	N/A	UT	IV	△ 9
24	N11-C-7001 A-H	24" Pipe to Balance Header Weld	80A0481	24-080-CS	N/A	UT	IV	
25	N11-C-7001 A-D	Balance Header to 24" Pipe Weld	80A0481	24-080-CS	N/A	UT	IV	
26	N11-IC-554-FW-11	24" Pipe to MSV4 Weld	80A0481	24-080-CS	N/A	UT	IV	△ 9
27	N11-1849-B	24" Pipe to Ell Weld	80A0481	24-080-CS	N/A	UT	IV	



PROGRAM PLAN AND SCHEDULE

System: Main Steam
Ref. Dwg. 03-05W
CC2 Preservice Inspection

Shoreham

By: MJD / 8/3/82
App: AIL / 8/4/82
Rev. 9 Page 4 of 23

ITEM NO.	COMPONENT IDENTIFICATION	COMPONENT DESCRIPTION	PROCEDURE NUMBER	CALIBRATION BLOCK (If applicable)	CODE CATEGORY	CODE EXAM METHOD	ZONE NO.	REMARKS
1	N11-C-7001 A-M	Balance Header to 16" Pipe Weld	80A0481	16-080-CS	N/A	UT	IV	
2	N11-IC-594- FW1	16" Pipe to Ell Weld	80A0481	16-080-CS	N/A	UT	IV	
3	N11-1853A	Ell to 16" Pipe Weld	80A0481	16-080-CS	N/A	UT	IV	
4	N11-IC-594- FW2	16" Pipe to 16" X 10" Red. Tee Weld	80A0481	16-080-CS	N/A	UT	IV	
5	N11-1854B	Ell to 16" Pipe Weld	80A0481	16-080-CS	N/A	UT	IV	
6	N11-593B	16" Pipe to Ell Weld	80A0481	16-080-CS	N/A	UT	IV	
7	N11-593A	Ell to Ell Weld	80A0481	16-080-CS	N/A	UT	IV	
8	N11-IC-594- FW7	Ell to Valve Chest Weld	80A0481	16-080-CS	N/A	UT	IV	
9	N11-IC-594- FW5	16" Pipe to Ell Weld	80A0481	16-080-CS	N/A	UT	IV	

System: Main Steam
 Ref. Dwg. 03-05W
 CC2 Preservice Inspection



PROGRAM PLAN AND SCHEDULE

Shoreham

By: MJD / 8/3/82
 App: Alc / 8/4/82
 Rev. 9 Page 5 of 23

ITEM NO.	COMPONENT IDENTIFICATION	COMPONENT DESCRIPTION	PROCEDURE NUMBER	CALIBRATION BLOCK (If applicable)	CODE CATEGORY	CODE EXAM METHOD	ZONE NO.	REMARKS
10	N11-592A	Ell to 16" Pipe Weld	80A0481	16-080-CS	N/A	UT	IV	
11	N11-592B	16" Pipe to Ell Weld	80A0481	16-080-CS	N/A	UT	IV	
12	N11-1855P	Ell to 10" Pipe Weld	80A0481	10-080-CS	N/A	UT	IV	
13	N11-1855N	10" Pipe to Ell Weld	80A0481	10-080-CS	N/A	UT	IV	
14	N11-1855M	10" Pipe to Ell Weld	80A0481	10-080-CS	N/A	UT	IV	
15	N11-1855L	Ell to Ell Weld	80A0481	10-080-CS	N/A	UT	IV	
16	N11-1855K	10" Pipe to Ell Weld	80A0481	10-080-CS	N/A	UT	IV	
17	N11-1855J	10" Pipe to 16" X 10" Red. Tee Weld	80A0481	10-080-CS	N/A	UT	IV	
18	N11-C-7001 A-N	Balance Header to 16" Pipe Weld	80A0481	16-080-CS	N/A	UT	IV	



System: Main Steam
 Ref. Dwg. 03-05W
 CC2 Preservice Inspection

PROGRAM PLAN AND SCHEDULE

Shoreham

By: MJD / 8/3/82
 App: AIC / 8/4/82
 Rev. 7 Page 6 of 23

ITEM NO.	COMPONENT IDENTIFICATION	COMPONENT DESCRIPTION	PROCEDURE NUMBER	CALIBRATION BLOCK (if applicable)	CODE CATEGORY	CODE EXAM METHOD	ZONE NO.	REMARKS
19	N11-IC-595-FW6	6" Pipe to Ell Weld	80A0481	16-080-CS	N/A	UT	IV	
20	N11-1858A	Ell to 16" Pipe Weld	80A0481	16-080-CS	N/A	UT	IV	
21	N11-1860A	6" Pipe to Ell Weld	80A0481	16-080-CS	N/A	UT	IV	
22	N11-IC-595-FW3	Ell to 16" Pipe Weld	80A0481	16-080-CS	N/A	UT	IV	
23	N11-1861A	6" Pipe to Ell Weld	80A0481	16-080-CS	N/A	UT	IV	△ 9
24	N11-IC-595-FW2	Ell to 16" Pipe Weld	80A0481	16-080-CS	N/A	UT	IV	
25	N11-1862C	6" X 10" Red. Tee to Pipe Weld	80A0481	16-080-CS	N/A	UT	IV	
26	N11-1862D	6" Pipe to Ell Weld	80A0481	16-080-CS	N/A	UT	IV	
27	N11-1862E	Ell to 16" Pipe Weld	80A0481	16-080-CS	N/A	UT	IV	



System: Main Steam
 Ref. Dwg. 03-05W
 CC2 Preservice Inspection

PROGRAM PLAN AND SCHEDULE

Shoreham

By: MJD / 8/3/82
 App: AK / 8/4/82
 Rev. 9 Page 7 of 23

ITEM NO.	COMPONENT IDENTIFICATION	COMPONENT DESCRIPTION	PROCEDURE NUMBER	CALIBRATION BLOCK (If applicable)	CODE CATEGORY	CODE EXAM METHOD	ZONE NO.	REMARKS
28	N11-IC-594-FW9	10" Pipe to Valve N11-MOV-031B Weld	80A0481	10-080-CS	N/A	UT	IV	
29	N11-1863A	Ell to 10" Pipe Weld	80A0481	10-080-CS	N/A	UT	IV	
30	N11-IC-595-FW8	10" Pipe to Valve MOV-031A Weld	80A0481	10-080-CS	N/A	UT	IV	

PROGRAM PLAN AND SCHEDULE

System: Residual Heat Removal
 Ref. Dwg. 06-04W
 CC2 Preservice Inspection

Shoreham

By: MJD / 8/3/82
 App: AIL / 8/4/82
 Rev. 9 Page 8 of 23

ITEM NO.	COMPONENT IDENTIFICATION	COMPONENT DESCRIPTION	PROCEDURE NUMBER	CALIBRATION BLOCK (if applicable)	CODE CATEGORY	CODE EXAM METHOD	ZONE NO.	REMARKS
1	E11-IC-39-FW11	Valve MOV-034A to Ell Weld	80A0481	18-040-CS	N/A	UT	IV	
2	E11-1380B	Ell to 18" Pipe Weld	80A0481	18-040-CS	N/A	UT	IV	
3	E11-1380A	18" Pipe to Ell Weld	80A0481	18-040-CS	N/A	UT	IV	
4	E11-IC-39-FW12	Ell to 18" Pipe Weld	80A0481	18-040-CS	N/A	UT	IV	
		DELETED						△ 9
6	E11-212B	24" Pipe to Tee Weld	80A0481	24-040-CS	N/A	UT	IV	
7	E11-212D	24" Pipe to Ell Weld	80A0481	24-040-CS	N/A	UT	IV	
8	E11-IC-30-FW7	Ell to 24" Pipe Weld	80A0481	24-040-CS	N/A	UT	IV	
		DELETED						△ 9

System: Residual Heat Removal
 Ref. Dwg. 06-04W
 CC2 Preservice Inspection

PROGRAM PLAN AND SCHEDULE

Shoreham

By: MJD / 8/3/82
 App: AL / 1 8/4/82
 Rev. 9 Page 9 of 23

ITEM NO.	COMPONENT IDENTIFICATION	COMPONENT DESCRIPTION	PROCEDURE NUMBER	CALIBRATION BLOCK (If applicable)	CODE CATEGORY	CODE EXAM METHOD	ZONE NO.	REMARKS
10	E11-214B	24" Pipe to Tee Weld	80A0481	24-040-CS	N/A	UT	IV	
11	E11-IC-32-FW1	Tee to Ell Weld	80A0481	24-040-CS	N/A	UT	IV	
12	E11-1360A	Ell to 24" Pipe Weld	80A0481	24-040-CS	N/A	UT	IV	
13	E11-1360B	24" Pipe to Ell Weld	80A0481	24-040-CS	N/A	UT	IV	
14	E11-1360C	Ell to 24" Pipe Weld	80A0481	24-040-CS	N/A	UT	IV	
15	E11-1360D	24" Pipe to Tee Weld	80A0481	24-040-CS	N/A	UT	IV	
16	E11-1360E	Tee to 24" Pipe Weld	80A0481	24-040-CS	N/A	UT	IV	
17	E11-1360F	24" Pipe to Ell Weld	80A0481	24-040-CS	N/A	UT	IV	
18	E11-IC-32-FW2	Ell to 24" Pipe Weld	80A0481	24-040-CS	N/A	UT	IV	

System: Residual Heat Removal
 Ref. Dwg. 06-04W
 CC2 Preservice Inspection



PROGRAM PLAN AND SCHEDULE
 Shoreham

By: MJD / 8/3/82
 App: AK / 8/11/82
 Rev. 9 Page 10 of 23

ITEM NO.	COMPONENT IDENTIFICATION	COMPONENT DESCRIPTION	PROCEDURE NUMBER	CALIBRATION BLOCK (If applicable)	CODE CATEGORY	CODE EXAM METHOD	ZONE NO.	REMARKS
		DELETED						
20	E11-1362A	24" Pipe to Ell Weld						9
21	E11-1362B	Ell to 24" Pipe Weld	80A0481	24-080-CS	N/A	UT	IV	
	E11-1362C	24" Pipe to Ell Weld	80A0481	24-080-CS	N/A	UT	IV	
		DELETED						
		DELETED						9
25	E11-IC-32-FW4	Valve MOV-036A to 24" Pipe Weld	80A0481	24-080-CS	N/A	UT	IV	9
26	E11-1381-C	Tee to 18" x 16" Reducer Weld	80A0481	18-040-CS	N/A	UT	IV	

System: Residual Heat Removal
 Ref. Dwg. 06-07W
 CC2 Preservice Inspection

PROGRAM PLAN AND SCHEDULE

Shoreham

By: MJD / 8/3/82
 App: AK / 8/4/82
 Rev. 9 Page 11 of 23

ITEM NO.	COMPONENT IDENTIFICATION	COMPONENT DESCRIPTION	PROCEDURE NUMBER	CALIBRATION BLOCK (If applicable)	CODE CATEGORY	CODE EXAM METHOD	ZONE NO.	REMARKS
1	E11-200A	E11 to 18" Pipe Weld	80A0481	18-040-CS	N/A	UT	IV	
2	E11-200B	18" Pipe to E11 Weld	80A0481	18-040-CS	N/A	UT	IV	
3	E11-IC-27-FW2	E11 to 18" Pipe Weld	80A0481	18-040-CS	N/A	UT	IV	
4	E11-201H	18" x 16" Reducer to 18" x 16" Reducing Tee	80A0481	18-040-CS	N/A	UT	IV	△ 9
5	E11-195F	Tee to 24" Pipe Weld	80A0481	24-040-CS	N/A	UT	IV	
6	E11-195G	24" Pipe to E11 Weld	80A0481	24-040-CS	N/A	UT	IV	
7	E11-IC-21-FW3	E11 to 24" Pipe Weld	80A0481	24-040-CS	N/A	UT	IV	
8	E11-197A	Flow Element E11-FE-001B to 24" Pipe Weld	80A0481	24-040-CS	N/A	UT	IV	
9	E11-197B	24" Pipe to Tee Weld	80A0481	24-040-CS	N/A	UT	IV	

System: Residual Heat Removal
 Ref. Dwg. 06-07W
 CC2 Preservice Inspection

PROGRAM PLAN AND SCHEDULE

Shoreham

By: MSD / 8/3/82
 App: AK / 8/4/82
 Rev. 9 Page 12 of 23

ITEM NO.	COMPONENT IDENTIFICATION	COMPONENT DESCRIPTION	PROCEDURE NUMBER	CALIBRATION BLOCK (If applicable)	CODE CATEGORY	CODE EXAM METHOD	ZONE NO.	REMARKS
10	E11-197C	Tee to Ell Weld	80A0481	24-040-CS	N/A	UT	IV	
11	E11-198A	Tee to 24" Pipe Weld	80A0481	24-040-CS	N/A	UT	IV	
12	E11-198B	24" Pipe to Ell Weld	80A0481	24-040-CS	N/A	UT	IV	
13	E11-198C	Ell to 24" Pipe Weld	80A0481	24-040-CS	N/A	UT	IV	
14	E11-199A	Ell to 24" Pipe Weld	80A0481	24-040-CS	N/A	UT	IV	
15	E11-IC-21-FW6	24" Pipe to Tee Weld	80A0481	24-040-CS	N/A	UT	IV	
16	E11-1373D	24" Pipe to Ell Weld	80A0481	24-040-CS	N/A	UT	IV	
17	E11-1373C	Ell to 24" Pipe Weld	80A0481	24-040-CS	N/A	UT	IV	
		DELETED						△ 9



System: Residual Heat Removal
 Ref. Dwg. 06-10W
 CC2 Preservice Inspection

PROGRAM PLAN AND SCHEDULE

Shoreham

By: MJD / 8/3/82
 App: AIC / 8/4/82
 Rev. 7 Page 13 of 23

ITEM NO.	COMPONENT IDENTIFICATION	COMPONENT DESCRIPTION	PROCEDURE NUMBER	CALIBRATION BLOCK (If applicable)	CODE CATEGORY	CODE EXAM METHOD	ZONE NO.	REMARKS
1	E11-IC-37-FW1	Tee to Ell Weld	80A0481	24-040-CS	N/A	UT	IV	
2	E11-1355C	Ell to Ell Weld	80A0481	24-040-CS	N/A	UT	IV	
3	E11-1355B	Ell to 24" Pipe Weld	80A0481	24-040-CS	N/A	UT	IV	
4	E11-1355A	24" Pipe to Ell Weld	80A0481	24-040-CS	N/A	UT	IV	
5	E11-1356B	Ell to 24" Pipe Weld	80A0481	24-040-CS	N/A	UT	IV	
6	E11-1356C	24" Pipe to Ell Weld	80A0481	24-040-CS	N/A	UT	IV	
7	E11-IC-37-FW3	24" Pipe to Ell Weld	80A0481	24-040-CS	N/A	UT	IV	
8	E11-1357B	Ell to 24" Pipe Weld	80A0481	24-040-CS	N/A	UT	IV	
9	E11-1357C	24" Pipe to Ell Weld	80A0481	24-040-CS	N/A	UT	IV	

System: Residual Heat Removal
 Ref. Dwg. 06-10W
 CC2 Preservice Inspection

PROGRAM PLAN AND SCHEDULE

Shoreham

By: MJD / 8/3/82
 App: AL / 8/4/82
 Rev. 9 Page 14 of 23

ITEM NO.	COMPONENT IDENTIFICATION	COMPONENT DESCRIPTION	PROCEDURE NUMBER	CALIBRATION BLOCK (If applicable)	CODE CATEGORY	CODE EXAM METHOD	ZONE NO.	REMARKS
10	E11-1357D	E11 to 24" Pipe Weld	80A0481	24-040-CS	N/A	UT	IV	
11	E11-IC-37-FW5	E11 to E11 Weld	80A0481	24-040-CS	N/A	UT	IV	
12	E11-1359A	E11 to 24" Pipe Weld	80A0481	24-040-CS	N/A	UT	IV	
13	E11-1370A	24" Pipe to E11 Weld	80A0481	24-040-CS	N/A	UT	IV	
14	E11-1372E	24" Pipe to E11 Weld	80A0481	24-040-CS	N/A	UT	IV	
15	E11-1372D	E11 to 24" Pipe Weld	80A0481	24-040-CS	N/A	UT	IV	
16	E11-1372C	24" Pipe to E11 Weld	80A0481	24-040-CS	N/A	UT	IV	
17	E11-1373J	24" X 20" Red. to 24" Pipe Weld	80A0481	24-040-CS	N/A	UT	IV	

System: Residual Heat Removal
 Ref. Dwg. 06-11W
 CC2 Preservice Inspection

PROGRAM PLAN AND SCHEDULE

Shoreham

By: MJD 1 8/3/82
 App: AK 1 8/4/82
 Rev. 9 Page 15 of 23

ITEM NO.	COMPONENT IDENTIFICATION	COMPONENT DESCRIPTION	PROCEDURE NUMBER	CALIBRATION BLOCK (If applicable)	CODE CATEGORY	CODE EXAM METHOD	ZONE NO	REMARKS
1	E11-IC-62-FW6	10" X 8" Red. to 10" Pipe Weld	80A0481	10-080-CS	N/A	UT	IV	
2	E11-1447F	10" Pipe to Ell Weld	80A0481	10-080-CS	N/A	UT	IV	
3	E11-1447E	Ell to Ell Weld	80A0481	10-080-CS	N/A	UT	IV	
4	E11-1447C	10" Pipe to Ell Weld	80A0481	10-080-CS	N/A	UT	IV	
5	E11-1447B	Ell to Ell Weld	80A0481	10-080-CS	N/A	UT	IV	
6	E11-1447A	Ell to 10" Pipe Weld	80A0481	10-080-CS	N/A	UT	IV	
7	E11-IC-62-FW5	10" Pipe to Valve IOV-0017A Weld	80A0481	10-080-CS	N/A	UT	IV	
8	E11-IC-62-FW4	Valve IOV-0017A to 10" Pipe Weld	80A0481	10-080-CS	N/A	UT	IV	
9	E11-1444C	10" Pipe to Ell Weld	80A0481	10-080-CS	N/A	UT	IV	

System: Residual Heat Removal
 Ref. Dwg. 05-11W
 CC2 Preservice Inspection

PROGRAM PLAN AND SCHEDULE

Shoreham

By: MJD / 8/3/82
 App: AK / 8/4/82
 Rev. 9 Page 16 of 23

ITEM NO.	COMPONENT IDENTIFICATION	COMPONENT DESCRIPTION	PROCEDURE NUMBER	CALIBRATION BLOCK (if applicable)	CODE CATEGORY	CODE EXAM METHOD	ZONE NO.	REMARKS
10	E11-1444B	E11 to 10" Pipe Weld	80A0481	10-080-CS	N/A	UT	IV	
11	E11-1444A	10" Pipe to E11 Weld	80A0481	10-080-CS	N/A	UT	IV	
12	E11-1428D	10" Pipe to E11 Weld	80A0481	10-080-CS	N/A	UT	IV	
13	E11-1446A	10" E11 to Pipe Weld	80A0481	10-080-CS	N/A	UT	IV	
14	E11-IC-62-FW20	10" X 8" Red. to 10" Pipe Weld	80A0481	10-080-CS	N/A	UT	IV	
15	E11-1443B	10" Pipe to E11 Weld	80A0481	10-080-CS	N/A	UT	IV	
16	E11-IC-62-FW13	10" Pipe to Valve IOV-0017B Weld	80A0481	10-080-CS	N/A	UT	IV	
17	E11-IC-62-FW12	Valve IOV-0017B to 10" Pipe Weld	80A0481	10-080-CS	N/A	UT	IV	
18	E11-1442B	10" Pipe to E11 Weld	80A0481	10-080-CS	N/A	UT	IV	

System: Residual Heat Removal
 Ref. Dwg. 06-11W
 CC2 Preservice Inspection

PROGRAM PLAN AND SCHEDULE

Shoreham

By: MSD / 8/3/82
 App: AIC / 8/4/82
 Rev. 9 Page 17 of 23

ITEM NO.	COMPONENT IDENTIFICATION	COMPONENT DESCRIPTION	PROCEDURE NUMBER	CALIBRATION BLOCK (If applicable)	CODE CATEGORY	CODE EXAM METHOD	ZONE NO.	REMARKS
19	E11-1442A	Ell to 10" Pipe Weld	80A0481	10-080-CS	N/A	UT	IV	
20	E11-1441F	10" Pipe to Ell Weld	80A0481	10-080-CS	N/A	UT	IV	
21	E11-1446F	10" Pipe to Ell Weld	80A0481	10-080-CS	N/A	UT	IV	
22	E11-1441E	10" Pipe to Ell Weld	80A0481	10-080-CS	N/A	UT	IV	
23	E11-1441D	10" Pipe to Ell Weld	80A0481	10-080-CS	N/A	UT	IV	△ 9
24	E11-IC-70-FW3	Tee to Ell Weld	80A0481	10-080-CS	N/A	UT	IV	
25	E11-1428F	Ell to 10" Pipe Weld	80A0481	10-080-CS	N/A	UT	IV	
26	E11-1428E	10" Pipe to Ell Weld	80A0481	10-080-CS	N/A	UT	IV	
		DELETED						△ 9

1125

System: Residual Heat Removal
 Ref. Dwg. 06-11W
 CC2 Preservice Inspection

PROGRAM PLAN AND SCHEDULE

Shoreham

By: MJD / 8/3/82
 App: AK / 8/4/82
 Rev. 9 Page 18 of 23

ITEM NO	COMPONENT IDENTIFICATION	COMPONENT DESCRIPTION	PROCEDURE NUMBER	CALIBRATION BLOCK (If applicable)	CODE CATEGORY	CODE EXAM METHOD	ZONE NO.	REMARKS
28	E11-IC-70-FW7	10" Pipe to Ell Weld	80A0481	10-080-CS	N/A	UT	IV	
29	E11-1428B	Ell to 10" Pipe Weld	80A0481	10-080-CS	N/A	UT	IV	

System: Residual Heat Removal
 Ref. Dwg. 06-15W
 CC2 Preservice Inspection

PROGRAM PLAN AND SCHEDULE

Shoreham

By: MJD / 8/3/82
 App: AK / 8/4/82
 Rev. 7 Page 19 of 23

ITEM NO.	COMPONENT IDENTIFICATION	COMPONENT DESCRIPTION	PROCEDURE NUMBER	CALIBRATION BLOCK (If applicable)	CODE CATEGORY	CODE EXAM METHOD	ZONE NO	REMARKS
1	E11-IC-30-FW8	Tee to 20" Pipe Weld	80A0481	20-040-CS	N/A	UT	IV	△ 9
2	E11-1431A	20" Pipe to Ell Weld	80A0481	20-040-CS	N/A	UT	IV	
3	-1432B	20" Pipe to Ell Weld	80A0481	20-040-CS	N/A	UT	IV	
4	E11-IC-130-FW8	Ell to Valve 020V-0020 Weld	80A0481	20-040-CS	N/A	UT	IV	△ 9



System: High Press. Cool. Injection
 Ref. Dwg. 08-02W
 CC2 Preservice Inspection

PROGRAM PLAN AND SCHEDULE

Shoreham

By: MJD 1 8/3/82
 App: AK 1 8/4/82
 Rev. 9 Page 20 of 23

ITEM NO.	COMPONENT IDENTIFICATION	COMPONENT DESCRIPTION	PROCEDURE NUMBER	CALIBRATION BLOCK (If applicable)	CODE CATEGORY	CODE EXAM METHOD	ZONE NO.	REMARKS
1	E41-6398A	Ell to 10" Pipe Weld	80A0481	10-080-CS	N/A	UT	IV	
2	E41-IC-183-FW8	10" Pipe to Ell Weld	80A0481	10-080-CS	N/A	UT	IV	
3	E41-6401B	10" Pipe to Ell Weld	80A0481	10-080-CS	N/A	UT	IV	
4	E41-IC-183-FW14	Ell to 10" Pipe Weld	80A0481	10-080-CS	N/A	UT	IV	
5	E41-6397D	10" Pipe to Ell Weld	80A0481	10-080-CS	N/A	UT	IV	
6	E41-IC-183-FW7	Ell to 10" Pipe Weld	80A0481	10-080-CS	N/A	UT	IV	
7	E41-989L	10" Pipe to Ell Weld	80A0481	10-080-CS	N/A	UT	IV	
8	E41-989G	Tee to Ell Weld	80A0481	10-080-CS	N/A	UT	IV	
9	E41-989D	Ell to Ell Weld	80A0481	10-080-CS	N/A	UT	IV	

System: High Press. Cool. Injection
 Ref. Dwg. 08-02W
 CC2 Preservice Inspection

PROGRAM PLAN AND SCHEDULE

Shoreham

By: MJD / 8/3/82
 App: AK / 8/4/82
 Rev. 9 Page 21 of 23

ITEM NO.	COMPONENT IDENTIFICATION	COMPONENT DESCRIPTION	PROCEDURE NUMBER	CALIBRATION BLOCK (if applicable)	CODE CATEGORY	CODE EXAM METHOD	ZONE NO.	REMARKS
10	E41-989K	Ell to 10" Pipe Weld	80A0481	10-080-CS	N/A	UT	IV	
11	E41-989B	10" Pipe to Ell Weld	80A0481	10-080-CS	N/A	UT	IV	
12	E41-IC-183-FW3	10" Pipe to Valve MOV-042 Weld	80A0481	10-080-CS	N/A	UT	IV	
13	E41-989F	Tee to Ell Weld	80A0481	10-080-CS	N/A	UT	IV	
14	E41-989E	Ell to Ell Weld	80A0481	10-080-CS	N/A	UT	IV	
15	E41-989H	Ell to Ell Weld	80A0481	10-080-CS	N/A	UT	IV	
16	E41-IC-183-FW4	10" Pipe to Valve MOV-049 Weld	80A0481	10-080-CS	N/A	UT	IV	

System: High Press. Cool. Injection
 Ref. Dwg. 08-04W
 CC2 Preservice Inspection

PROGRAM PLAN AND SCHEDULE

Shoreham

By: MJD / 8/3/82
 App: AK / 8/4/82
 Rev. 9 Page 22 of 23

ITEM NO.	COMPONENT IDENTIFICATION	COMPONENT DESCRIPTION	PROCEDURE NUMBER	CALIBRATION BLOCK (If applicable)	CODE CATEGORY	CODE EXAM METHOD	ZONE NO.	REMARKS
1	E41-IC-181-FW3	Valve 14V-0013 to Ell Weld	80A0481	14-100-CS	N/A	UT	IV	
2	E41-981A	Ell to Tee Weld	80A0481	14-100-CS	N/A	UT	IV	
3	E41-981B	14" X 10" Red. Tee to 14" Pipe Weld	80A0481	14-100-CS	N/A	UT	IV	
4	E41-782A	14" Pipe to Ell Weld	80A0481	14-100-CS	N/A	UT	IV	
		DELETED						△ 9
		DELETED						△ 9
7	E41-IC-181-FW7	14" Pipe to Valve MOV-035 Weld	80A0481	14-100-CS	N/A	UT	IV	
8	E41-IC-180-FW1	14" X 10" Red. Tee to 10" Pipe Weld	80A0481	10-100-CS	N/A	UT	IV	
9	E41-973B	Ell to 10" Pipe Weld	80A0481	10-100-CS	N/A	UT	IV	

System: High Press. Cool. Injection
 Ref. Dwg. 08-04W
 CC2 Preservice Inspection

PROGRAM PLAN AND SCHEDULE

Shoreham

By: MJD / 8/3/82
 App: AK / 8/4/82
 Rev. 9 Page 23 of 23

ITEM NO.	COMPONENT IDENTIFICATION	COMPONENT DESCRIPTION	PROCEDURE NUMBER	CALIBRATION BLOCK (If applicable)	CODE CATEGORY	CODE EXAM METHOD	ZONE NO.	REMARKS
10	E41-973C	10" Pipe to Ell Weld	80A0481	10-100-CS	N/A	UT	IV	
11	E41-973D	Ell to 10" Pipe Weld	80A0481	10-100-CS	N/A	UT	IV	
12	E41-973E	10" Pipe to Bolted Joint BJ-01 Weld	80A0481	10-100-CS	N/A	UT	IV	
13	E41-974A	Bolted Joint BJ-01 to 10" Pipe Weld	80A0481	10-100-CS	N/A	UT	IV	
14	E41-974B	10" Pipe to 10" X 8" Red. Weld	80A0481	10-100-CS	N/A	UT	IV	
15	E41-IC-181-FW2	14" Pipe to Valve E41-14V-0013 Weld	80A0481	14-080-CS	N/A	UT	IV	
16	E41-979-C	Ell to 14" Pipe Weld	80A0481	14-080-CS	N/A	UT	IV	
17	E41-979-B	14" Pipe to Ell Weld	80A0481	14-080-CS	N/A	UT	IV	
18	E41-979-A	14" x 12" Reducer to 14" Pipe Weld	80A0481	14-080-CS	N/A	UT	IV	

System: RWCU - Break Exclusion
 Ref. Dwg. A-1
 Augmented Preservice Inspection

PROGRAM PLAN AND SCHEDULE

Shoreham

By: MJD / 8/3/82
 App: AK / 8/4/82
 Rev. 9 Page 1 of 39

ITEM NO.	COMPONENT IDENTIFICATION	COMPONENT DESCRIPTION	PROCEDURE NUMBER	CALIBRATION BLOCK (If applicable)	CODE CATEGORY	CODE EXAM METHOD	ZONE NO.	REMARKS
1	G33-IC1120-FW1	6" Pipe to Pipe Weld	80A0481	06-080-CS	J-1	UT	IV	CCI-PSI Done (11-01, 2)
2	G33-IC1120-FW2	6" Pipe to Valve G33-MOV-034 Weld	80A0481	06-080-CS	J-1	UT	IV	CCI-PSI Done (11-01, 1)
3	G33-IC-1120-FW3	Valve G33-MOV-034 to 6" Pipe Weld	80A0481	06-080-CS	N/A	UT	IV	CC3

System: RCIC - Break Exclusion
 Ref. Dwg. A-2
 Augmented Preservice Inspection

PROGRAM PLAN AND SCHEDULE

Shoreham

By: MTD 1 8/3/82
 App: AL 1 8/4/82
 Rev. 9 Page 2 of 39

ITEM NO.	COMPONENT IDENTIFICATION	COMPONENT DESCRIPTION	PROCEDURE NUMBER	CALIBRATION BLOCK (If applicable)	CODE CATEGORY	CODE EXAM METHOD	ZONE NO.	REMARKS
1	E51-IC61-FW1	3" Pipe to Pipe Weld	80A0481	03-080-CS	UT	J-1	IV	CC1-PSI Done (09-01, 30)
2	E51-IC61-FW2	3" Pipe to Valve E51-MOV-042 Weld	80A0481	03-080-CS	UT	J-1	IV	CC1-PSI Done (09-01, 31)
3	E51-IC61-FW3	Valve E51-MOV-042 to Pipe Weld	80A0481	03-080-CS	UT	N/A	IV	CC2

System: HPCI - Break Exclusion
 Ref. Dwg. A-3
 Augmented Preservice Inspection

PROGRAM PLAN AND SCHEDULE

Shoreham

By: MJD / 8/3/82
 App: AK / 8/4/82
 Rev. 9 Page 3 of 39

ITEM NO.	COMPONENT IDENTIFICATION	COMPONENT DESCRIPTION	PROCEDURE NUMBER	CALIBRATION BLOCK (If applicable)	CODE CATEGORY	CODE EXAM METHOD	ZONE NO.	REMARKS
1	E41-IC183-FW1	10" Ell to Pipe Weld	80A0481	10-080-CS	J-1	UT	IV	CC1 - PSI Done (08-01, 10)
2	E41-988-A	10" Pipe to Ell Weld	80A0481	10-080-CS	J-1	UT	IV	CC1 - PSI Done (08-01, 9)
3	E41-988-C	10" Ell to Pipe Weld	80A0481	10-080-CS	J-1	UT	IV	CC1 - PSI Done (08-01, 8)
4	E41-988-G	10" Pipe to Ell Weld	80A0481	10-080-CS	J-1	UT	IV	CC1 - PSI Done (08-01, 7)
5	E41-IC-183-FW2	Valve E41-MOV-042 to 10" Pipe Weld	80A0481	10-080-CS	J-1	UT	IV	CC1 - PSI Done (08-01, 6)
6	E41-IC-183-FW3	10" Pipe to Valve E41-MOV-042 Weld	80A0481	10-080-CS	N/A	UT	IV	CC2 - PSI Done (08-02, 12)
7	E41-989-T	10" Pipe to Ell Weld	80A0481	10-080-CS	N/A	UT	IV	CC2
8	E41-989-B	10" Pipe to Ell Weld	80A0481	10-080-CS	N/A	UT	IV	CC2 - PSI Done (08-02, 11)

PROGRAM PLAN AND SCHEDULE

Shoreham

By: MJD / 8/3/82
 App: AK / 8/4/82
 Rev. 9 Page 4 of 39

ITEM NO.	COMPONENT IDENTIFICATION	COMPONENT DESCRIPTION	PROCEDURE NUMBER	CALIBRATION BLOCK (If applicable)	CODE CATEGORY	CODE EXAM METHOD	ZONE NO.	REMARKS
1	B21-NS001-BW15	24" Pipe to Valve B21-AOV-082A Weld	80A0481	24-080-CS	J-1	UT	IV	CC1-PSI Done (03-01, 140)
2	B21-NS002-BW12	24" Pipe to Valve B21-AOV-082B Weld	80A0481	24-080-CS	J-1	UT	IV	CC1-PSI Done (03-01, 139)
3	B21-NS003-BW12	24" Pipe to Valve B21-AOV-082C Weld	80A0481	24-080-CS	J-1	UT	IV	CC1-PSI Done (03-01, 142)
4	B21-NS004-BW12	24" Pipe to Valve B21-AOV-082D Weld	80A0481	24-080-CS	J-1	UT	IV	CC1-PSI Done (03-01, 141)
5	N11-NS001-BW16	Valve B21-AOV-082A to 24" Pipe Weld	80A0481	24-080-CS	N/A	UT	IV	CC2-PSI Done (03-04, 1)
6	N11-NS001-BW13	Valve B21-AOV-082B to 24" Pipe Weld	80A0481	24-080-CS	N/A	UT	IV	CC2-PSI Done (03-04, 7)
7	N11-NS003-BW13	Valve B21-AOV-082C to 24" Pipe Weld	80A0481	24-080-CS	N/A	UT	IV	CC2-PSI Done (03-04, 15)
8	N11-NS004-BW13	Valve B21-AOV-082D to 24" Pipe Weld	80A0481	24-080-CS	N/A	UT	IV	CC2-PSI Done (03-04, 22)
9	N11-558-H	2" S.O.L. to 24" Pipe Socket Weld	80A0472	N/A	N/A	PT	IV	CC2



System: MS - Break Exclusion
 Ref. Dwg. A-4
 Augmented Preservice Inspection

PROGRAM PLAN AND SCHEDULE

Shoreham

By: MJD / 8/3/82
 App: AIC / 8/4/82
 Rev. 9 Page 5 of 39

ITEM NO.	COMPONENT IDENTIFICATION	COMPONENT DESCRIPTION	PROCEDURE NUMBER	CALIBRATION BLOCK (If applicable)	CODE CATEGORY	CODE EXAM METHOD	ZONE NO.	REMARKS
10	N11-567-F	2" S.O.L. to 24" Pipe Socket Weld	80A0472	N/A	N/A	PT	IV	CC2
11	N11-575-E	2" S.O.L. to 24" Pipe Socket Weld	80A0472	N/A	N/A	PT	IV	CC2
12	N11-583-F	2" S.O.L. to 24" Pipe Socket Weld	80A0472	N/A	N/A	PT	IV	CC2
13	N11-558G	B21-TE-003 to 24" Pipe Socket Weld	80A0472	N/A	N/A	PT	IV	CC2

PROGRAM PLAN AND SCHEDULE

Shoreham

By: MJD / 8/3/82
 App: AIL / 8/4/82
 Rev. 9 Page 6 of 39

ITEM NO.	COMPONENT IDENTIFICATION	COMPONENT DESCRIPTION	PROCEDURE NUMBER	CALIBRATION BLOCK (If applicable)	CODE CATEGORY	CODE EXAM METHOD	ZONE NO.	REMARKS
1	B21-IC898-FW3	3" Pipe to Pipe Weld	80A0481	03-080-CS	J-1	UT	IV	CC1-PSI Done (03-03, 20)
2	B21-IC898-FW4	3" Pipe to Valve B21-MOV-032 Weld	80A0481	03-080-CS	J-1	UT	IV	CC1-PSI Done (03-03, 21)
3	B21-IC898-FW9	Valve B21-MOV-032 to Ell Weld	80A0481	03-080-CS	N/A	UT	IV	CC2
4	B21-2237-A	Ell to 3" Pipe Weld	80A0481	03-080-CS	N/A	UT	IV	CC2
5	B21-2237-B	3" Pipe to Ell Weld	80A0481	03-080-CS	N/A	UT	IV	CC2
6	B21-2237-C	Ell to 3" Pipe Weld	80A0481	03-080-CS	N/A	UT	IV	CC2
7	B21-2237-D	3" Pipe to Ell Weld	80A0481	03-080-CS	N/A	UT	IV	CC2
8	B21-2237-E	Ell to 3" Pipe Weld	80A0481	03-080-CS	N/A	UT	IV	CC2

System: FW - Break Exclusion
 Ref. Dwg. A-6
 Augmented Preservice Inspection

PROGRAM PLAN AND SCHEDULE

Shoreham

By: MJD 1 8/3/82
 App: AK 1 8/4/82
 Rev. 9 Page 7 of 39

ITEM NO.	COMPONENT IDENTIFICATION	COMPONENT DESCRIPTION	PROCEDURE NUMBER	CALIBRATION BLOCK (If applicable)	CODE CATEGORY	CODE EXAM METHOD	ZONE NO.	REMARKS
1	B21-IC173-FW4	18" Pipe to Valve B21-AOV-036A Weld	80A0481	18-100-CS	J-1	UT	IV	CC1-PSI Done (04-01, 31)
2	B21-IC173-FW3	Valve B21-AOV-036A to 18" Pipe Weld	80A0481	18-100-CS	J-1	UT	IV	CC1-PSI Done (04-01, 32)
3	B21-673-N	18" Pipe to 20" X 18" Reducer Weld	80A0481	18-100-CS	J-1	UT	IV	CC1-PSI Done (04-01, 33)
4	B21-673-G	20" X 18" Reducer to 20" Pipe Weld	80A0481	20-100-CS	J-1	UT	IV	CC1-PSI Done (04-01, 34)
5	B21-673-F	20" Pipe to 20" X 20" X 10" Thermal Sleeve Tee Weld	80A0481	20-100-CS	J-1	UT	IV	CC1-PSI Done (04-01, 35)
6	B21-673-E	20" X 20" X 10" Tee to 20" Pipe Weld	80A0481	20-100-CS	J-1	UT	IV	CC1-PSI Done (04-01, 36)
7	B21-673-B	20" Sch. 120 Pipe to Machined I.D. Sch. 100 Pipe Weld	80A0481	20-100-CS	J-1	UT	IV	CC1-PSI Done (04-01, 37)
8	B21-IC173-FW2	20" Pipe to Valve B21-MOV-035A Weld	80A0481	20-120-CS	J-1	UT	IV	CC1-PSI Done (04-01, 38)
9	B21-IC173-FW1	Valve B21-MOV-035A to 20" Pipe Weld	80A0481	20-120-CS	N/A	UT	IV	CC4

System: FW - Break Exclusion
 Ref. Dwg. A-6
 Augmented Preservice Inspection

PROGRAM PLAN AND SCHEDULE

Shoreham

By: MTD / 8/3/82
 App: AK / 8/4/82
 Rev. 7 Page 8 of 39

ITEM NO.	COMPONENT IDENTIFICATION	COMPONENT DESCRIPTION	PROCEDURE NUMBER	CALIBRATION BLOCK (If applicable)	CODE CATEGORY	CODE EXAM METHOD	ZONE NO.	REMARKS
10	B21-IC243-FW13	2" S.O.L. to 20" Pipe Socket Weld	80A0487	N/A	N/A	MT	IV	CC4
11	B21-IC243-FW14	2" Red. Insert to 2" S.O.L. Socket Weld	80A0487	N/A	N/A	MT	IV	CC4
12	B21-673-L	10" Pipe to 20" X 10" Reducing Tee Weld	80A0481	10-100-CS	J-1	UT	IV	CC1-PSI Done (11-04, 48)
13	B21-IC1509-FW1	10" X 8" Reducing Ell to 10" Pipe Weld	80A0481	10-100-CS	J-1	UT	IV	CC1-PSI Done (11-04, 47)
14	G33-6174-B	8" Pipe to 10" X 8" Reducing Ell Weld	80A0481	08-100-CS	J-1	UT	IV	CC1-PSI Done (11-04, 46)

System: FW - Break Exclusion
 Ref. Dwg. A-7
 Augmented Preservice Inspection

PROGRAM PLAN AND SCHEDULE

Shoreham

By: MJD / 8/3/82
 App: AIC / 8/4/82
 Rev. 9 Page 9 of 39

ITEM NO.	COMPONENT IDENTIFICATION	COMPONENT DESCRIPTION	PROCEDURE NUMBER	CALIBRATION BLOCK (If applicable)	CODE CATEGORY	CODE EXAM METHOD	ZONE NO.	REMARKS
1	G33-6174-C	8" X 6" Reducing Tee to 8" Pipe Weld	80A0481	08-100-CS	J-1	UT	IV	CC1-PSI Done (11-04, 45)
2	G33-6174-J	8" Pipe to 8" X 6" Reducing Tee Weld	80A0481	08-100-CS	J-1	UT	IV	CC1-PSI Done (11-04, 44)
3	G33-6174-K	8" X 6" Reducer to 8" Pipe Weld	80A0481	08-100-CS	J-1	UT	IV	CC1-PSI Done (11-04, 43)
4	G33-6471-L	8" Pipe to 8" X 6" Reducer Weld	80A0481	06-120-CS	J-1	UT	IV	CC1-PSI Done (11-04, 42)
5	G33-IC1509-FW2	6" Pipe to Pipe Weld	80A0481	06-120-CS	J-1	UT	IV	CC1-PSI Done (11-04, 41)
6	G33-1696-G	6" Ell to Pipe Weld	80A0481	06-120-CS	J-1	UT	IV	CC1-PSI Done (11-04, 40)
7	G33-1696-F	6" Pipe to Ell Weld	80A0481	06-120-CS	J-1	UT	IV	CC1-PSI Done (11-04, 39)
8	G33-1696-E	6" Ell to Pipe Weld	80A0481	06-120-CS	J-1	UT	IV	CC1-PSI Done (11-04, 38)
9	G33-1696-D	6" Pipe to Ell Weld	80A0481	06-120-CS	J-1	UT	IV	CC1-PSI Done (11-04, 37)

System: FW - Break Exclusion
 Ref. Dwg. A-7
 Augmented Preservice Inspection

PROGRAM PLAN AND SCHEDULE

Shoreham

By: MJD / 8/3/82
 App: AK / 18/4/82
 Rev. 9 Page 10 of 39

ITEM NO.	COMPONENT IDENTIFICATION	COMPONENT DESCRIPTION	PROCEDURE NUMBER	CALIBRATION BLOCK (If applicable)	CODE CATEGORY	CODE EXAM METHOD	ZONE NO.	REMARKS
10	G33-IC1509-FW11	6" Ell to Pipe Weld	80A0481	06-120-CS	J-1	UT	IV	CC1-PSI Done (11-04, 36)
11	G33-1697-8A	6" Pipe to Ell Weld	80A0481	06-120-CS	J-1	UT	IV	CC1-PSI Done (11-04, 35)
12	G33-IC1509-FW13	6" Ell to Pipe Weld	80A0481	06-120-CS	J-1	UT	IV	CC1-PSI Done (11-04, 34)
13	G33-1697-9D	6" Pipe to Ell Weld	80A0481	06-120-CS	J-1	UT	IV	CC1-PSI Done (11-04, 33)
14	G33-1697-9B	6" Ell to Pipe Weld	80A0481	06-120-CS	J-1	UT	IV	CC1-PSI Done (11-04, 32)
15	G33-IC1509-FW12	6" Pipe to Ell Weld	80A0481	06-120-CS	J-1	UT	IV	CC1-PSI Done (11-04, 31)
16	G33-1698-D	6" Ell to Pipe Weld	80A0481	06-120-CS	J-1	UT	IV	CC1-PSI Done (11-04, 30)
17	G33-1698-C	6" Pipe to Ell Weld	80A0481	06-120-CS	J-1	UT	IV	CC1-PSI Done (11-04, 29)
18	G33-1698-B	6" Ell to Pipe Weld	80A0481	06-120-CS	J-1	UT	IV	CC1-PSI Done (11-04, 28)



System: FW - Break Exclusion
 Ref. Dwg. A-7
 Augmented Preservice Inspection

PROGRAM PLAN AND SCHEDULE

Shoreham

By: MJD / 8/3/82
 App: AK / 8/4/82
 Rev. 9 Page 11 of 39

ITEM NO.	COMPONENT IDENTIFICATION	COMPONENT DESCRIPTION	PROCEDURE NUMBER	CALIBRATION BLOCK (If applicable)	CODE CATEGORY	CODE EXAM METHOD	ZONE NO.	REMARKS
19	G33-1698-E	6" Pipe to Ell Weld	80A0481	06-120-CS	J-1	UT	IV	CCI-PSI Done (11-04, 27)
20	G33-IC1509-FW6	Valve 06V-0050A to 6" Pipe Weld	80A0481	06-120-CS	J-1	UT	IV	CCI-PSI Done (11-04, 26)
21	G33-IC1509-FW7	6" Pipe to Valve 06V-0050A Weld	80A0481	06-120-CS	J-1	UT	IV	CCI-PSI Done (11-04, 25)
22	G33-IC1509-FW8	Valve - 06V-0036A to 6" Pipe Weld	80A0481	06-120-CS	J-1	UT	IV	CCI-PSI Done (11-04, 24)
23	G33-IC1509-FW9	6" Pipe to Valve 06V-0036A Weld	80A0481	06-120-CS	J-1	UT	IV	CCI-PSI Done (11-04, 23)
24	G33-IC1509-FW10	Valve 06V-0049A to 6" Pipe Weld	80A0481	06-120-CS	J-1	UT	IV	CCI-PSI Done (11-04, 22)
25	G33-IC1508-FW10	6" Pipe to Valve 06V-0049A Weld	80A0481	06-120-CS	J-1	UT	IV	CCI-PSI Done (11-04, 21)
26	G33-1684-6C	6" Ell to Pipe Weld	80A0481	06-120-CS	J-1	UT	IV	CCI-PSI Done (11-04, 20)
27	G33-1684-6B	6" Pipe to Ell Weld	80A0481	06-120-CS	J-1	UT	IV	CCI-PSI Done (11-04, 19)

System: FW - Break Exclusion
 Ref. Dwg. A-7
 Augmented Preservice Inspection

PROGRAM PLAN AND SCHEDULE

Shoreham

By: MJD / 8/3/82
 App: AIL / 8/1/82
 Rev. 9 Page 12 of 39

ITEM NO.	COMPONENT IDENTIFICATION	COMPONENT DESCRIPTION	PROCEDURE NUMBER	CALIBRATION BLOCK (If applicable)	CODE CATEGORY	CODE EXAM METHOD	ZONE NO.	REMARKS
28	G33-6174-R	8" X 6" Reducing Tee to 6" Pipe Weld	80A0481	06-120-CS	J-1	UT	IV	CCI-PSI Done (11-04, 49)
29	G33-6174-S	6" Pipe to Ell Weld	80A0481	06-120-CS	J-1	UT	IV	CCI-PSI Done (11-04, 50)
30	G33-6174-V	6" Ell to Pipe Weld	80A0481	06-120-CS	J-1	UT	IV	CCI-PSI Done (11-04, 51)
31	G33-6174-W	6" Pipe to Ell Weld	80A0481	06-120-CS	J-1	UT	IV	CCI-PSI Done (11-04, 52)
32	E51-IC68-FW13	6" Pipe to Ell Weld	80A0481	06-120-CS	J-1	UT	IV	CCI-PSI Done (09-01, 10)
33	E51-1676-5A	6" Ell to Pipe Weld	80A0481	06-120-CS	J-1	UT	IV	CCI-PSI Done (09-01, 9)
34	E51-IC68-FW14	6" Pipe to Ell Weld	80A0481	06-120-CS	J-1	UT	IV	CCI-PSI Done (09-01, 8)
35	E51-1676-4F	6" Ell to Pipe Weld	80A0481	06-120-CS	J-1	UT	IV	CCI-PSI Done (09-01, 7)
36	E51-1676-4E	6" Pipe to Ell Weld	80A0481	06-120-CS	J-1	UT	IV	CCI-PSI Done (09-01, 6)



System: FW - Break Exclusion
 Ref. Dwg. A-7
 Augmented Preservice Inspection

PROGRAM PLAN AND SCHEDULE

Shoreham

By: BJD 1 8/3/82
 App: AIC 1 8/4/82
 Rev. 9 Page 13 of 39

ITEM NO.	COMPONENT IDENTIFICATION	COMPONENT DESCRIPTION	PROCEDURE NUMBER	CALIBRATION BLOCK (If applicable)	CODE CATEGORY	CODE EXAM METHOD	ZONE NO.	REMARKS
37	E51-1676-4D	6" Ell to Pipe Weld	80A0481	06-120-CS	J-1	UT	IV	CCI-PSI Done (09-01, 5)
38	E51-1676-4C	6" Pipe to Ell Weld	80A0481	06-120-CS	J-1	UT	IV	CCI-PSI Done (09-01, 4)
39	E51-1676-4H	6" Ell to Pipe Weld	80A0481	06-120-CS	J-1	UT	IV	CCI-PSI Done (09-01, 3)
40	E51-1676-4G	6" Pipe to Ell Weld	80A0481	06-120-CS	J-1	UT	IV	CCI-PSI Done (09-01, 2)
41	E51-IC68-FW11	Valve E51-MOV-035 to 6" RCIC Return Pipe Weld	80A0481	06-120-CS	J-1	UT	IV	CCI-PSI Done (09-01, 1)



System: FW - Break Exclusion
 Ref. Dwg. A-8
 Augmented Preservice Inspection

PROGRAM PLAN AND SCHEDULE

Shoreham

By: MJD / 8/3/82
 App: AIC / 8/4/82
 Rev. 9 Page 14 of 39

ITEM NO.	COMPONENT IDENTIFICATION	COMPONENT DESCRIPTION	PROCEDURE NUMBER	CALIBRATION BLOCK (If applicable)	CODE CATEGORY	CODE EXAM METHOD	ZONE NO.	REMARKS
1	B21-IC175-FW2	20" Pipe to Valve B21-MOV-035B Weld	80A0481	20-120-CS	J-1	UT	IV	CC1-PSI Done (04-02, 38)
2	B21-682-B	20" Sch. 100 Pipe to Machined I.D. Sch. 120 Pipe Weld	80A0481	20-100-CS	J-1	UT	IV	CC1-PSI Done (04-02, 37)
3	821-682-E	20" X 20" X 16" Thermal Sleeve Tee to 20" Pipe Weld	80A0481	20-100-CS	J-1	UT	IV	CC1-PSI Done (04-02, 36)
4	B21-682-G	20" Pipe to 20" X 20" X 16" Thermal Sleeve Tee Weld	80A0481	20-100-CS	J-1	UT	IV	CC1-PSI Done (04-02, 35)
5	B21-682-H	20" X 18" Reducer to 20" Pipe Weld	80A0481	20-100-CS	J-1	UT	IV	CC1-PSI Done (04-02, 34)
6	B21-682-X	18" Pipe to 20" X 18" Reducer Weld	80A0481	18-100-CS	J-1	UT	IV	CC1-PSI Done (04-02, 33)
7	B21-IC175-FW3	Valve B21-AOV-036B to 18" Pipe Weld	80A0481	18-100-CS	J-1	UT	IV	CC1-PSI Done (04-02, 32)
8	B21-IC175-FW4	18" Pipe to Valve B21-AOV-036B Weld	80A0481	18-100-CS	J-1	UT	IV	CC1-PSI Done (04-02, 31)
9	B21-682-M	16" Pipe to 20" X 16" Reducing Tee Weld	80A0481	16-100-CS	J-1	UT	IV	CC1-PSI Done (04-02, 29)



System: FW - Break Exclusion
 Ref. Dwg. A-8
 Augmented Preservice Inspection

PROGRAM PLAN AND SCHEDULE

Shoreham

By: MJD / 8/3/82
 App: AK / 8/11/82
 Rev. 9 Page 15 of 39

ITEM NO.	COMPONENT IDENTIFICATION	COMPONENT DESCRIPTION	PROCEDURE NUMBER	CALIBRATION BLOCK (if applicable)	CODE CATEGORY	CODE EXAM METHOD	ZONE NO.	REMARKS
10	E41-IC175-FW14	16" Pipe to Pipe Weld	80A0481	16-100-CS	J-1	UT	IV	CCI-PSI Done (11-03, 28)
11	E41-8226-B	16" X 8" Reducing Tee to 16" Pipe Weld	80A0481	16-100-CS	J-1	UT	IV	CCI-PSI Done (11-03, 27)
12	E41-8226-Q	16" X 14" Reducer to 16" X 8" Reducing Tee	80A0481	16-100-CS	J-1	UT	IV	CCI-PSI Done (11-03, 26)
13	E41-IC181-FW9	14" Pipe to 16" X 14" Reducer Weld	80A0481	14-100-CS	J-1	UT	IV	CCI-PSI Done (08-01, 5)
14	E41-3651-F	14" Pipe to Pipe Weld	80A0481	14-100-CS	J-1	UT	IV	CCI-PSI Done (08-01, 4)
15	E41-3651-B	14" Ell to Pipe Weld	80A0481	14-100-CS	J-1	UT	IV	CCI-PSI Done (08-01, 3)
16	E41-3651-A	14" Pipe to Ell Weld	80A0481	14-100-CS	J-1	UT	IV	CCI-PSI Done (08-01, 2)
17	E41-IC181-FW8	Valve E41-MOV-035 to 14" Pipe Weld on HPCI Return	80A0481	14-100-CS	J-1	UT	IV	CCI-PSI Done (08-01, 1)
18	G33-IC1508-FW1	8" X 6" Reducer to 8" Pipe Weld	80A0481	08-100-CS	J-1	UT	IV	CCI-PSI Done (11-03, 24)

System: FW - Break Exclusion
 Ref. Dwg. A-8
 Augmented Preservice Inspection

PROGRAM PLAN AND SCHEDULE

Shoreham

By: MJD / 8/3/82
 App: AK / 8/4/82
 Rev. 9 Page 16 of 39

ITEM NO.	COMPONENT IDENTIFICATION	COMPONENT DESCRIPTION	PROCEDURE NUMBER	CALIBRATION BLOCK (if applicable)	CODE CATEGORY	CODE EXAM METHOD	ZONE NO.	REMARKS
19	G33-1682-C	6" Ell to Pipe Weld	80A0481	06-120-CS	J-1	UT	IV	CC1-PSI Done (11-03, 10)
20	G33-1682-G	6" Pipe to Ell Weld	80A0481	06-120-CS	J-1	UT	IV	CC1-PSI Done (11-03, 11)
21	G33-1682-F	6" Ell to Pipe Weld	80A0481	06-120-CS	J-1	UT	IV	CC1-PSI Done (11-03, 12)
22	G33-IC1508-FW5	6" Pipe to Valve 06V-0036B	80A0481	06-120-CS	J-1	UT	IV	CC1-PSI Done (11-03, 13)
23	G33-IC1508-FW4	Valve 06V-0036B to 6" Pipe Weld	80A0481	06-120-CS	J-1	UT	IV	CC1-PSI Done (11-03, 14)
24	G33-1679-8D	6" Pipe to Ell Weld	80A0481	06-120-CS	J-1	UT	IV	CC1-PSI Done (11-03, 15)
25	G33-1679-8C	6" Ell to Pipe Weld	80A0481	06-120-CS	J-1	UT	IV	CC1-PSI Done (11-03, 16)
26	G33-1679-8B	6" Pipe to Ell Weld	80A0481	06-120-CS	J-1	UT	IV	CC1-PSI Done (11-03, 17)
27	G33-1679-8A	6" Ell to Pipe Weld	80A0481	06-120-CS	J-1	UT	IV	CC1-PSI Done (11-03, 18)

System: FW - Break Exclusion
 Ref. Dwg. A-8
 Augmented Preservice Inspection

PROGRAM PLAN AND SCHEDULE

Shoreham

By: MJD / 8/3/82
 App: AK / 8/4/82
 Rev. 9 Page 17 of 39

ITEM NO.	COMPONENT IDENTIFICATION	COMPONENT DESCRIPTION	PROCEDURE NUMBER	CALIBRATION BLOCK (If applicable)	CODE CATEGORY	CODE EXAM METHOD	ZONE NO.	REMARKS
28	G33-IC1508-FW3	6" Pipe to Valve 06V-0050B Weld	80A0481	06-120-CS	J-1	UT	IV	CCI-PSI Done (11-03, 19)
29	G33-IC1508-FW2	Valve 06V-0050B to 6" Pipe Weld	80A0481	06-120-CS	J-1	UT	IV	CCI-PSI Done (11-03, 20)
30	G33-1679-9D	6" Pipe To Ell Weld	80A0481	06-120-CS	J-1	UT	IV	CCI-PSI Done (11-03, 21)
31	G33-1679-9B	6" Ell to Pipe Weld	80A0481	06-120-CS	J-1	UT	IV	CCI-PSI Done (11-03, 22)
32	G33-1679-9A	6" Pipe to 8" X 6" Reducer Weld	80A0481	06-120-CS	J-1	UT	IV	CCI-PSI Done (11-03, 23)
33	N21-IC243-FW11	2" S.O.L. to 20" Pipe Socket Weld	80A0487	N/A	N/A	MT	IV	CC4
34	N21-IC243-FW16	2" X 3/4" Red. Insert to S.O.L. Socket Weld	80A0487	N/A	N/A	MT	IV	CC4
35	N21-IC175-FW1	20" Pipe to Valve N21-MOV-035B Weld	80A0481	20-120-CS	N/A	UT	IV	CC4
36	E41-IC181-FW7	14" Pipe to Valve E41-MOV-035 Weld	80A0481	14-100-CS	N/A	UT	IV	CC2



System: FW - Break Exclusion
 Ref. Dwg. A-8
 Augmented Preservice Inspection

PROGRAM PLAN AND SCHEDULE

Shoreham

By: MJD / 8/3/82
 App: AK / 8/4/82
 Rev. 9 Page 16 of 39

ITEM NO.	COMPONENT IDENTIFICATION	COMPONENT DESCRIPTION	PROCEDURE NUMBER	CALIBRATION BLOCK (If applicable)	CODE CATEGORY	CODE EXAM METHOD	ZONE NO.	REMARKS
19	G33-1682-C	6" Ell to Pipe Weld	80A0481	06-120-CS	J-1	UT	IV	CCI-PSI Done (11-03, 10)
20	G33-1682-G	6" Pipe to Ell Weld	80A0481	06-120-CS	J-1	UT	IV	CCI-PSI Done (11-03, 11)
21	G33-1682-F	6" Ell to Pipe Weld	80A0481	06-120-CS	J-1	UT	IV	CCI-PSI Done (11-03, 12)
22	G33-IC1508-FW5	6" Pipe to Valve 06V-0036B	80A0481	06-120-CS	J-1	UT	IV	CCI-PSI Done (11-03, 13)
23	G33-IC1508-FW4	Valve 06V-0036B to 6" Pipe Weld	80A0481	06-120-CS	J-1	UT	IV	CCI-PSI Done (11-03, 14)
24	G33-1679-8D	6" Pipe to Ell Weld	80A0481	06-120-CS	J-1	UT	IV	CCI-PSI Done (11-03, 15)
25	G33-1679-8C	6" Ell to Pipe Weld	80A0481	06-120-CS	J-1	UT	IV	CCI-PSI Done (11-03, 16)
26	G33-1679-8B	6" Pipe to Ell Weld	80A0481	06-120-CS	J-1	UT	IV	CCI-PSI Done (11-03, 17)
27	G33-1679-8A	6" Ell to Pipe Weld	80A0481	06-120-CS	J-1	UT	IV	CCI-PSI Done (11-03, 18)



System: FW - Break Exclusion
 Ref. Dwg. A-8
 Augmented Preservice Inspection

PROGRAM PLAN AND SCHEDULE

Shoreham

By: MJD / 8/3/82
 App: AK / 8/4/82
 Rev. 9 Page 17 of 39

ITEM NO.	COMPONENT IDENTIFICATION	COMPONENT DESCRIPTION	PROCEDURE NUMBER	CALIBRATION BLOCK (If applicable)	CODE CATEGORY	CODE EXAM METHOD	ZONE NO.	REMARKS
28	G33-IC1508-FW3	6" Pipe to Valve 06V-0050B Weld	80A0481	06-120-CS	J-1	UT	IV	CC1-PSI Done (11-03, 19)
29	G33-IC1508-FW2	Valve 06V-0050B to 6" Pipe Weld	80A0481	06-120-CS	J-1	UT	IV	CC1-PSI Done (11-03, 20)
30	G33-1679-9D	6" Pipe To Ell Weld	80A0481	06-120-CS	J-1	UT	IV	CC1-PSI Done (11-03, 21)
31	G33-1679-9B	6" Ell to Pipe Weld	80A0481	06-120-CS	J-1	UT	IV	CC1-PSI Done (11-03, 22)
32	G33-1679-9A	6" Pipe to 8" X 6" Reducer Weld	80A0481	06-120-CS	J-1	UT	IV	CC1-PSI Done (11-03, 23)
33	N21-IC243-FW11	2" S.O.L. to 20" Pipe Socket Weld	80A0487	N/A	N/A	MT	IV	CC4
34	N21-IC243-FW16	2" X 3/4" Red. Insert to S.O.L. Socket Weld	80A0487	N/A	N/A	MT	IV	CC4
35	N21-IC175-FW1	20" Pipe to Valve N21-MOV-035B Weld	80A0481	20-120-CS	N/A	UT	IV	CC4
36	E41-IC181-FW7	14" Pipe to Valve E41-MOV-035 Weld	80A0481	14-100-CS	N/A	UT	IV	CC2

System: FW - Break Exclusion
Ref. Dwg. A-8
Augmented Preservice Inspection

PROGRAM PLAN AND SCHEDULE

Shoreham

by: MJD / 8/3/82
App: ALC / 18/7/82
Rev. 9 Page 18 of 39

ITEM NO.	COMPONENT IDENTIFICATION	COMPONENT DESCRIPTION	PROCEDURE NUMBER	CALIBRATION BLOCK (if applicable)	CODE CATEGORY	CODE EXAM METHOD	ZONE NO.	REMARKS
37	E41-8226-S	8" Pipe to 16" X 18" Reducing Tee Weld	S0A0481	08-100-CS	J-1	UT	IV	CCI-PSI Done (11-03, 25)



System: MS - Break Exclusion
 Ref. Dwg. A-9
 Augmented Preservice Inspection

PROGRAM PLAN AND SCHEDULE

Shoreham

By: MJD / 8/3/82
 App: AIC / 8/4/82
 Rev. Page 19 of 39

ITEM NO.	COMPONENT IDENTIFICATION	COMPONENT DESCRIPTION	PROCEDURE NUMBER	CALIBRATION BLOCK (if applicable)	CODE CATEGORY	CODE EXAM METHOD	ZONE NO.	REMARKS
1	B21-P2574-FWA	2" Coupling to Nipple Socket Weld	80A0472	N/A	N/A	PT	IV	CCI
2	B21-P2574-FWK	2" Pipe to Coupling Socket Weld	80A0472	N/A	N/A	PT	IV	CCI
3	B21-P2574-B	2" Pipe to Tee Socket Weld	80A0472	N/A	N/A	PT	IV	CCI
4	B21-P2574-FWD	Valve B21-MOV-063 to 2" Pipe Socket Weld	80A0472	N/A	N/A	PT	IV	CCI
5	B21-P2574-C	2" Pipe to Tee Socket Weld	80A0472	N/A	N/A	PT	IV	CCI
6	B21-P2574-FWE	Tee to 2" Pipe Socket Weld	80A0472	N/A	N/A	PT	IV	CCI
7	B21-P2574-FWF	2" Pipe to Tee Socket Weld	80A0472	N/A	N/A	PT	IV	CCI
8	B21-P2574-FWJ	Tee to 2" X 1½" Red. Insert Socket Weld	80A0472	N/A	N/A	PT	IV	CCI
9	B21-P2574-FWG	Tee to 2" Pipe Socket Weld	80A0472	N/A	N/A	PT	IV	CCI



System: MS - Break Exclusion
 Ref. Dwg. A-9
 Augmented Preservice Inspection

PROGRAM PLAN AND SCHEDULE

Shoreham

By: MJD 1 8/3/82
 App: ALC 1 8/4/82
 Rev. 9 Page 20 of 39

ITEM NO.	COMPONENT IDENTIFICATION	COMPONENT DESCRIPTION	PROCEDURE NUMBER	CALIBRATION BLOCK (If applicable)	CODE CATEGORY	CODE EXAM METHOD	ZONE NO.	REMARKS
10	B21-P2574-FWH	2" Pipe to Ell Socket Weld	80A0472	N/A	N/A	PT	IV	CC1
11	B21-P2574-FWL	2" Ell to 2" X 3/4" Restricting Orifice Socket Weld	80A0472	N/A	N/A	PT	IV	CC1
12	E32-P6000-FWA	2" X 1 1/2" Red. Insert to 1 1/2" Pipe Socket Weld	80A0472	N/A	N/A	PT	IV	CC1
13	E32-P6000-B	1 1/2" Pipe to Ell Socket Weld	80A0472	N/A	N/A	PT	IV	CC1
14	E32-P6000-C	Ell to 1 1/2" Pipe Socket Weld	80A0472	N/A	N/A	PT	IV	CC1
15	E32-P6000-D	1 1/2" Pipe to Ell Socket Weld	80A0472	N/A	N/A	PT	IV	CC1
16	E32-P6000-E	Ell to 1 1/2" Pipe Socket Weld	80A0472	N/A	N/A	PT	IV	CC1
17	E32-P6000-F	1 1/2" Pipe to Tee Socket Weld	80A0472	N/A	N/A	PT	IV	CC1
18	E32-P6000-M	Tee to 1 1/2" X 3/4" Red. Insert Socket Weld	80A0472	N/A	N/A	PT	IV	CC1



System: MS - Break Exclusion
 Ref. Dwg. A-9
 Augmented Preservice Inspection

PROGRAM PLAN AND SCHEDULE

Shoreham

By: MJD 1 8/3/82
 App: AK 1 8/4/82
 Rev. 9 Page 21 of 39

ITEM NO.	COMPONENT IDENTIFICATION	COMPONENT DESCRIPTION	PROCEDURE NUMBER	CALIBRATION BLOCK (If applicable)	CODE CATEGORY	CODE EXAM METHOD	ZONE NO.	REMARKS
19	E32-P6000-G	Tee to 1½" Pipe Socket Weld	80A0472	N/A	N/A	PT	IV	CC1
20	E32-P6000-H	1½" Pipe to Tee Socket Weld	80A0472	N/A	N/A	PT	IV	CC1
21	E32-P6000-I	Tee to 1½" Pipe Socket Weld	80A0472	N/A	N/A	PT	IV	CC1
22	E32-P6000-J	1½" Pipe to Ell Socket Weld	80A0472	N/A	N/A	PT	IV	CC1
23	E32-P6000-K	Ell to 1½" Pipe Socket Weld	80A0472	N/A	N/A	PT	IV	CC1
24	E32-P6000-L	1½" Pipe to Valve E32-MOV-021C Socket Weld	80A0472	N/A	N/A	PT	IV	CC1
25	E32-P6072-A	Tee to 1½" X 1" Red. Insert Socket Weld	80A0472	N/A	N/A	PT	IV	CC1



System: MS - Break Exclusion
 Ref. Dwg. A-10
 Augmented Preservice Inspection

PROGRAM PLAN AND SCHEDULE

Shoreham

By: MJD / 8/3/82
 App: AK / 8/4/82
 Rev. ⁹ Page 22 of 39

ITEM NO.	COMPONENT IDENTIFICATION	COMPONENT DESCRIPTION	PROCEDURE NUMBER	CALIBRATION BLOCK (If applicable)	CODE CATEGORY	CODE EXAM METHOD	ZONE NO.	REMARKS
1	B21-P2575-FWA	2" Coupling to Nipple Socket Weld	80A0472	N/A	N/A	PT	IV	CC1
2	B21-P2575-FWK	2" Pipe to Coupling Socket Weld	80A0472	N/A	N/A	PT	IV	CC1
3	B21-P2575-B	2" Pipe to Tee Socket Weld	80A0472	N/A	N/A	PT	IV	CC1
4	B21-P2575-FWD	2" Pipe to Valve B21-MOV-064 Socket Weld	80A0472	N/A	N/A	PT	IV	CC1
5	B21-P2575-C	2" Pipe to Tee Socket Weld	80A0472	N/A	N/A	PT	IV	CC1
6	B21-P2575-FWE	Tee to 2" Pipe Socket Weld	80A0472	N/A	N/A	PT	IV	CC1
7	B21-P2575-F	2" Pipe to Tee Socket Weld	80A0472	N/A	N/A	PT	IV	CC1
8	B21-P2575-G	Tee to 2" Pipe Socket Weld	80A0472	N/A	N/A	PT	IV	CC1
9	B21-P2575-H	2" Pipe to Ell Socket Weld	80A0472	N/A	N/A	PT	IV	CC1



System: MS - Break Exclusion
 Ref. Dwg. A-10
 Augmented Preservice Inspection

PROGRAM PLAN AND SCHEDULE

Shoreham

By: MJD 1 8/3/82
 App: ALC 1 8/4/82
 Rev. 9 Page 23 of 39

ITEM NO.	COMPONENT IDENTIFICATION	COMPONENT DESCRIPTION	PROCEDURE NUMBER	CALIBRATION BLOCK (if applicable)	CODE CATEGORY	CODE EXAM METHOD	ZONE NO.	REMARKS
10	B21-P2575-FWL	Ell to 2" X 3/4" Restricting Orifice Socket Weld	80A0472	N/A	N/A	PT	IV	CCI
11	B21-P2575-J	Tee to 2" X 1 1/2" Red. Insert Socket Weld	80A0472	N/A	N/A	PT	IV	CCI
12	E32-P6001-FWS	Valve E32-MOV-021D to 1 1/2" Pipe Socket Weld	80A0472	N/A	N/A	PT	IV	CCI
13	E32-P6001-B	1 1/2" Pipe to Tee Socket Weld	80A0472	N/A	N/A	PT	IV	CCI
14	E32-P6001-FWI	Tee to 1 1/2" X 3/4" Red. Insert Socket Weld	80A0472	N/A	N/A	PT	IV	CCI
15	E32-P6001-C	Tee to 1 1/2" Pipe Socket Weld	80A0472	N/A	N/A	PT	IV	CCI
16	E32-P6001-D	1 1/2" Pipe to Tee Socket Weld	80A0472	N/A	N/A	PT	IV	CCI
17	E32-P6001-E	Tee to 1 1/2" Pipe Socket Weld	80A0472	N/A	N/A	PT	IV	CCI
18	E32-P6001-FWT	A 1 1/2" Pipe to Ell Socket Weld	80A0472	N/A	N/A	PT	IV	CCI

System: MS - Break Exclusion
 Ref. Dwg. A-10
 Augmented Preservice Inspection

PROGRAM PLAN AND SCHEDULE

Shoreham

By: MJD / 8/3/82
 App: AK / 8/4/82
 Rev. Page 24 of 39

ITEM NO.	COMPONENT IDENTIFICATION	COMPONENT DESCRIPTION	PROCEDURE NUMBER	CALIBRATION BLOCK (If applicable)	CODE CATEGORY	CODE EXAM METHOD	ZONE NO.	REMARKS
19	E32-6001-FWR	Ell to 1½" Pipe Socket Weld	80A0472	N/A	N/A	PT	IV	CCI
20	E32-6001-FWQ	1½" Pipe to 1½" X 2" Red. Insert Socket Weld	80A0472	N/A	N/A	PT	IV	CCI
21	E32-P6073-A	Tee to 1½" X ¾" Red. Insert Socket Weld	80A0472	N/A	N/A	PT	IV	CCI



System: MS - Break Exclusion
 Ref. Dwg. A-11
 Augmented Preservice Inspection

PROGRAM PLAN AND SCHEDULE

Shoreham

By: MTD / 8/3/82
 App: AK / 18/4/82
 Rev. 9 Page 25 of 39

ITEM NO.	COMPONENT IDENTIFICATION	COMPONENT DESCRIPTION	PROCEDURE NUMBER	CALIBRATION BLOCK (If applicable)	CODE CATEGORY	CODE EXAM METHOD	ZONE NO.	REMARKS
1	B21-P25A0-FWA	2" S.O.L. to 2" Pipe Socket Weld	80A0472	N/A	N/A	PT	IV	CC2
2	B21-P25A0-FWL	2" Pipe to Ell Socket Weld	80A0472	N/A	N/A	PT	IV	CC2
3	B21-P25A0-C	Ell to 2" Pipe Socket Weld	80A0472	N/A	N/A	PT	IV	CC2
4	B21-P25A0-FWG	2" Pipe to Ell Socket Weld	80A0472	N/A	N/A	PT	IV	CC2
5	B21-P25A0-E	Ell to 2" Pipe Socket Weld	80A0472	N/A	N/A	PT	IV	CC2
6	B21-P25A0-FWH	2" Pipe to Ell Socket Weld	80A0472	N/A	N/A	PT	IV	CC2
7	B21-P25A0-FWI	Ell to 2" Pipe Socket Weld	80A0472	N/A	N/A	PT	IV	CC2
8	B21-P25A0-FWJ	2" Pipe to Ell Socket Weld	80A0472	N/A	N/A	PT	IV	CC2
9	B21-P25A0-FWK	Ell to 2" Pipe Socket Weld	80A0472	N/A	N/A	PT	IV	CC2



System: MS - Break Exclusion
 Ref. Dwg. A-11
 Augmented Preservice Inspection

PROGRAM PLAN AND SCHEDULE

Shoreham

By: MJD / 8/3/82
 App: AK / 8/4/82
 Rev. 9 Page 26 of 39

ITEM NO.	COMPONENT IDENTIFICATION	COMPONENT DESCRIPTION	PROCEDURE NUMBER	CALIBRATION BLOCK (If applicable)	CODE CATEGORY	CODE EXAM METHOD	ZONE NO.	REMARKS
10	B21-P25A0-FWF	2" Pipe to 2" X 3" Concentric Reducer Weld	80A0481	02-160-CS	N/A	UT	IV	CC2
11	B21-4210-F	2" X 3" Conc. Reducer to 3" Pipe Weld	80A0481	03-080-CS	N/A	UT	IV	CC2
12	B21-4210-E	2" Boss to 3" Pipe Socket Weld	80A0472	N/A	N/A	PT	IV	CC2
13	B21-4210-D	3" Pipe to Tee Weld	80A0481	03-080-CS	N/A	UT	IV	CC2
14	B21-4210-H	Tee to 3" Pipe Weld	80A0481	03-080-CS	N/A	UT	IV	CC2
15	B21-4210-J	2" Boss to 3" Pipe Socket Weld	80A0472	N/A	N/A	PT	IV	CC2
16	B21-4210-K	3" Pipe to 3" X 2" Conc. Reducer Weld	80A0481	03-080-CS	N/A	UT	IV	CC2
17	B21-P2599-FWF	3" X 2" Conc. Reducer to 2" Pipe Weld	80A0481	02-160-CS	N/A	UT	IV	CC2
18	B21-P2599-FWK	2" Pipe to Ell Socket Weld	80A0472	N/A	N/A	PT	IV	CC2



System: MS - Break Exclusion
 Ref. Dwg. A-11
 Augmented Preservice Inspection

PROGRAM PLAN AND SCHEDULE

Shoreham

By: MJD / 8/3/82
 App: AIC / 8/4/82
 Rev. 9 Page 27 of 39

ITEM NO.	COMPONENT IDENTIFICATION	COMPONENT DESCRIPTION	PROCEDURE NUMBER	CALIBRATION BLOCK (If applicable)	CODE CATEGORY	CODE EXAM METHOD	ZONE NO.	REMARKS
19	B21-P2599-FWJ	Ell to 2" Pipe Socket Weld	80A0472	N/A	N/A	PT	IV	CC2
20	B21-P2599-FWI	2" Pipe to Ell Socket Weld	80A0472	N/A	N/A	PT	IV	CC2
21	B21-P2599-FWH	Ell to 2" Pipe Socket Weld	80A0472	N/A	N/A	PT	IV	CC2
22	B21-P2599-E	2" Pipe to Ell Socket Weld	80A0472	N/A	N/A	PT	IV	CC2
23	B21-P2599-FWG	Ell to 2" Pipe Socket Weld	80A0472	N/A	N/A	PT	IV	CC2
24	B21-P2599-C	2" Pipe to Ell Socket Weld	80A0472	N/A	N/A	PT	IV	CC2
25	B21-P2599-FWL	Ell to 2" Pipe Socket Weld	80A0472	N/A	N/A	PT	IV	CC2
26	B21-P2599-FWA	2" Pipe to S.O.L. Socket Weld	80A0472	N/A	N/A	PT	IV	CC2
27	B21-P25A1-FWD	2" S.O.L. to 2" Pipe Socket Weld	80A0472	N/A	N/A	PT	IV	CC2

System: MS - Break Exclusion
 Ref. Dwg. A-11
 Augmented Preservice Inspection

PROGRAM PLAN AND SCHEDULE

Shoreham

By: MJD / 8/3/82
 App: AK / 8/4/82
 Rev. 9 Page 28 of 39

ITEM NO.	COMPONENT IDENTIFICATION	COMPONENT DESCRIPTION	PROCEDURE NUMBER	CALIBRATION BLOCK (If applicable)	CODE CATEGORY	CODE EXAM METHOD	ZONE NO.	REMARKS
28	B21-P25A1-C	2" Pipe to Ell Socket Weld	80A0472	N/A	N/A	PT	IV	CC2
29	B21-P25A1-FWI	Ell to 2" Pipe Socket Weld	80A0472	N/A	N/A	PT	IV	CC2
30	B21-P25A1-FWH	2" Pipe to Ell Socket Weld	80A0472	N/A	N/A	PT	IV	CC2
31	B21-P25A1-FWG	Ell to 2" Pipe Socket Weld	80A0472	N/A	N/A	PT	IV	CC2
32	B21-P25A1-FWF	2" Pipe to Ell Socket Weld	80A0472	N/A	N/A	PT	IV	CC2
33	B21-P25A1-FWE	Ell to 2" Pipe Socket Weld	80A0472	N/A	N/A	PT	IV	CC2
34	B21-P25A1-FWA	2" Pipe to 2" S.O.L. Socket Weld	80A0472	N/A	N/A	PT	IV	CC2
35	B21-4210-C	Tee to 3" Pipe Weld	80A0481	03-080-CS	N/A	UT	IV	CC2
36	B21-4210-FWP	2" S.O.L. to 3" Pipe Socket Weld	80A0472	N/A	N/A	PT	IV	CC2



System: MS - Break Exclusion
 Ref. Dwg. A-11
 Augmented Preservice Inspection

PROGRAM PLAN AND SCHEDULE

Shoreham

By: MJD / 8/3/82
 App: AIL / 8/9/82
 Rev. ⁹ Page 29 of 39

ITEM NO.	COMPONENT IDENTIFICATION	COMPONENT DESCRIPTION	PROCEDURE NUMBER	CALIBRATION BLOCK (If applicable)	CODE CATEGORY	CODE EXAM METHOD	ZONE NO.	REMARKS
37	B21-4210-M	2" S.O.L. to 3" Pipe Socket Weld	80A0472	N/A	N/A	PT	IV	CC2
38	B21-4210-N	2" Plug to S.O.L. Socket Weld	80A0472	N/A	N/A	PT	IV	CC2
39	B21-IC899-FW10	3" Pipe to Valve B21-MOV-034 Weld	80A0481	03-080-CS	N/A	UT	IV	CC2
40	B21-IC899-FW9	Valve B21-MOV-034 to 3" Pipe Weld	80A0481	03-080-CS	N/A	UT	IV	CC4
41	B21-4206-M	3" Pipe to Ell Weld	80A0481	03-080-CS	N/A	UT	IV	CC4
42	B21-4206-L	Ell to 3" Pipe Weld	80A0481	03-080-CS	N/A	UT	IV	CC4
43	B21-4206-K	3" Pipe to Ell Weld	80A0481	03-080-CS	N/A	UT	IV	CC4
44	B21-4206-J	Ell to 3" Pipe Weld	80A0481	03-080-CS	N/A	UT	IV	CC4
45	E32-P6029-FWA	2" S.O.L. to Pipe Socket Weld	80A0472	N/A	N/A	PT	IV	CC2



System: MS - Break Exclusion
 Ref. Dwg. A-11
 Augmented Preservice Inspection

PROGRAM PLAN AND SCHEDULE

Shoreham

By: MJD / 8/3/82
 App: AIC / 8/4/82
 Rev. 9 Page 30 of 39

ITEM NO.	COMPONENT IDENTIFICATION	COMPONENT DESCRIPTION	PROCEDURE NUMBER	CALIBRATION BLOCK (If applicable)	CODE CATEGORY	CODE EXAM METHOD	ZONE NO.	REMARKS
46	E32-P6029-B	2" Pipe to Ell Socket Weld	80A0472	N/A	N/A	PT	IV	CC2
47	E32-P6029-FWC	Ell to 2" Pipe Socket Weld	80A0472	N/A	N/A	PT	IV	CC2
48	E32-P6029-D	2" Pipe to Tee Socket Weld	80A0472	N/A	N/A	PT	IV	CC2
49	E32-P6029-E	Tee to 2" Pipe Socket Weld	80A0472	N/A	N/A	PT	IV	CC2
50	E32-P6029-F	2" Pipe to Tee Socket Weld	80A0472	N/A	N/A	PT	IV	CC2
51	E32-P6029-G	Tee to 2" Pipe Socket Weld	80A0472	N/A	N/A	PT	IV	CC2
52	E32-P6029-FWH	2" Pipe to Valve E32-MOV-024 Socket Weld	80A0472	N/A	N/A	PT	IV	CC2
53	E32-P6030-FWA	Tee to 2" Pipe Socket Weld	80A0472	N/A	N/A	PT	IV	CC2
54	E32-P6030-B	2" Pipe to Tee Socket Weld	80A0472	N/A	N/A	PT	IV	CC2



System: MS - Break Exclusion
 Ref. Dwg. A-11
 Augmented Preservice Inspection

PROGRAM PLAN AND SCHEDULE

Shoreham

By: MJD / 8/3/82
 App: AIC / 8/4/82
 Rev. 9 Page 31 of 39

ITEM NO.	COMPONENT IDENTIFICATION	COMPONENT DESCRIPTION	PROCEDURE NUMBER	CALIBRATION BLOCK (if applicable)	CODE CATEGORY	CODE EXAM METHOD	ZONE NO.	REMARKS
55	E32-P6030-C	Tee to 2" Pipe Socket Weld	80A0472	N/A	N/A	PT	IV	CC2
56	E32-P6030-D	2" Pipe to Tee Socket Weld	80A0472	N/A	N/A	PT	IV	CC2
57	E32-P6030-E	Tee to 2" Pipe Socket Weld	80A0472	N/A	N/A	PT	IV	CC2
58	E32-P6030-F	2" Pipe to Ell Socket Weld	80A0472	N/A	N/A	PT	IV	CC2
59	E32-P6030-G	Ell to 2" Pipe Socket Weld	80A0472	N/A	N/A	PT	IV	CC2
60	E32-P6030-FWH	2" Pipe to Valve E32-MOV-026 Socket Weld	80A0472	N/A	N/A	PT	IV	CC2
61	B21-P2598-FWD	2" Boss to Pipe Socket Weld	80A0472	N/A	N/A	PT	IV	CC2
62	B21-P2598-C	2" Pipe to Ell Socket Weld	80A0472	N/A	N/A	PT	IV	CC2
63	B21-P2598-FWI	Ell to 2" Pipe Socket Weld	80A0472	N/A	N/A	PT	IV	CC2



System: MS - Break Exclusion
 Ref. Dwg. A-11
 Augmented Preservice Inspection

PROGRAM PLAN AND SCHEDULE

Shoreham

By: MJD / 8/3/82
 App: AK / 8/4/82
 Rev. 9 Page 32 of 39

ITEM NO.	COMPONENT IDENTIFICATION	COMPONENT DESCRIPTION	PROCEDURE NUMBER	CALIBRATION BLOCK (If applicable)	CODE CATEGORY	CODE EXAM METHOD	ZONE NO.	REMARKS
64	B21-P2598-FWJ	2" Pipe to Ell Socket Weld	80A0472	N/A	N/A	PT	IV	CC2
65	B21-P2598-FWG	Ell to 2" Pipe Socket Weld	80A0472	N/A	N/A	PT	IV	CC2
66	B21-P2598-FWF	2" Pipe to Ell Socket Weld	80A0472	N/A	N/A	PT	IV	CC2
67	B21-P2598-FWE	Ell to 2" Pipe Socket Weld	80A0472	N/A	N/A	PT	IV	CC2
68	B21-P2598-FWK	2" Pipe to S.O.L. Socket Weld	80A0472	N/A	N/A	PT	IV	CC2



System: MS - Break Exclusion
 Ref. Dwg. A-12
 Augmented Preservice Inspection

PROGRAM PLAN AND SCHEDULE

Shoreham

By: MJD / 6/3/82
 App: AIC / 15/4/82
 Rev. 9 Page 33 of 39

ITEM NO.	COMPONENT IDENTIFICATION	COMPONENT DESCRIPTION	PROCEDURE NUMBER	CALIBRATION BLOCK (If applicable)	CODE CATEGORY	CODE EXAM METHOD	ZONE NO.	REMARKS
1	B21-P2572-FWA	2" Coupling to Nipple Socket Weld	80A0472	N/A	N/A	PT	IV	CCI
2	B21-P2572-FWK	2" Coupling to Pipe Socket Weld	80A0472	N/A	N/A	PT	IV	CCI
3	B21-P2572-B	2" Pipe to Tee Socket Weld	80A0472	N/A	N/A	PT	IV	CCI
4	B21-P2572-FWD	Valve B21-MOV-061 to 2" Pipe Socket Weld	80A0472	N/A	N/A	PT	IV	CCI
5	B21-P2572-C	2" Pipe to Tee Socket Weld	80A0472	N/A	N/A	PT	IV	CCI
6	B21-P2572-FWE	Tee to 2" Pipe Socket Weld	80A0472	N/A	N/A	PT	IV	CCI
7	B21-P2572-F	2" Pipe to Tee Socket Weld	80A0472	N/A	N/A	PT	IV	CCI
8	B21-P2572-G	Tee to 2" Pipe Socket Weld	80A0472	N/A	N/A	PT	IV	CCI
9	B21-P2572-J	Tee to 2" X 1½" Red. Insert Socket Weld	80A0472	N/A	N/A	PT	IV	CCI



System: MS - Break Exclusion
 Ref. Dwg. A-12
 Augmented Preservice Inspection

PROGRAM PLAN AND SCHEDULE

Shoreham

By: MJD / 8/3/82
 App: AIC / 8/4/82
 Rev. 9 Page 34 of 39

ITEM NO.	COMPONENT IDENTIFICATION	COMPONENT DESCRIPTION	PROCEDURE NUMBER	CALIBRATION BLOCK (If applicable)	CODE CATEGORY	CODE EXAM METHOD	ZONE NO.	REMARKS
10	B21-P2572-H	2" Pipe to Ell Socket Weld	80A0472	N/A	N/A	PT	IV	CC1
11	B21-P2572-FWL	Ell to 2" X 3/4" Restricting Orifice Socket Weld	80A0472	N/A	N/A	PT	IV	CC1
12	E32-P6002-FWA	2" X 1 1/2" Red. Insert to 1 1/2" Pipe Socket Weld	80A0472	N/A	N/A	PT	IV	CC1
13	E32-P6002-FWU	1 1/2" Pipe to Ell Socket Weld	80A0472	N/A	N/A	PT	IV	CC1
14	E32-P6002-C	Ell to 1 1/2" Pipe Socket Weld	80A0472	N/A	N/A	PT	IV	CC1
15	E32-P6002-FWCC	1 1/2" Pipe to Coupling Socket Weld	80A0472	N/A	N/A	PT	IV	CC1
16	E32-P6002-FWBB	Coupling to 1 1/2" Pipe Socket Weld	80A0472	N/A	N/A	PT	IV	CC1
17	E32-P6002-FWAA	1 1/2" Pipe to Tee Socket Weld	80A0472	N/A	N/A	PT	IV	CC1
18	E32-P6002-FWZ	Tee to 1 1/2" Pipe Socket Weld	80A0472	N/A	N/A	PT	IV	CC1



System: MS - Break Exclusion
 Ref. Dwg. A-12
 Augmented Preservice Inspection

PROGRAM PLAN AND SCHEDULE

Shoreham

By: MJD / 8/3/82
 App: AK / 8/4/82
 Rev. 9 Page 35 of 39

ITEM NO.	COMPONENT IDENTIFICATION	COMPONENT DESCRIPTION	PROCEDURE NUMBER	CALIBRATION BLOCK (If applicable)	CODE CATEGORY	CODE EXAM METHOD	ZONE NO.	REMARKS
19	E32-P6002-FWY	1½" Pipe to Coupling Socket Weld	80A0472	N/A	N/A	PT	IV	CC1
20	E32-P6002-FWX	Coupling to 1½" Pipe Socket Weld	80A0472	N/A	N/A	PT	IV	CC1
21	E32-P6002-G	1½" Pipe to Tee Socket Weld	80A0472	N/A	N/A	PT	IV	CC1
22	E32-P6002-FWP	Tee to 1½" X ¾" Red. Insert Socket Weld	80A0472	N/A	N/A	PT	IV	CC1
23	E32-P6002-F	Tee to 1½" Pipe Socket Weld	80A0472	N/A	N/A	PT	IV	CC1
24	E32-P6002-FWW	1½" Pipe to Ell Socket Weld	80A0472	N/A	N/A	PT	IV	CC1
25	E32-P6002-K	Ell to 1½" Pipe Socket Weld	80A0472	N/A	N/A	PT	IV	CC1
26	E32-P6002-FWL	1½" Pipe to Valve E32-MOV-021A Socket Weld	80A0472	N/A	N/A	PT	IV	CC1
27	E32-P6076-A	Tee to 1½" X ¾" Red. Insert Socket Weld	80A0472	N/A	N/A	PT	IV	CC1

System: MS - Break Exclusion
 Ref. Dwg. A-13
 Augmented Preservice Inspection

PROGRAM PLAN AND SCHEDULE

Shoreham

By: MJD / 8/3/82
 App: AL / 8/4/82
 Rev. 9 Page 36 of 39

ITEM NO.	COMPONENT IDENTIFICATION	COMPONENT DESCRIPTION	PROCEDURE NUMBER	CALIBRATION BLOCK (If applicable)	CODE CATEGORY	CODE EXAM METHOD	ZONE NO.	REMARKS
1	B21-P2573-FWA	Nipple to Coupling Socket Weld	80A0472	N/A	N/A	PT	IV	CCI
2	B21-P2573-K	Coupling to 2" Pipe Socket Weld	80A0472	N/A	N/A	PT	IV	CCI
3	B21-P2573-B	2" Pipe to Tee Socket Weld	80A0472	N/A	N/A	PT	IV	CCI
4	B21-P2573-FWD	Valve B21-MOV-062 to 2" Pipe Socket Weld	80A0472	N/A	N/A	PT	IV	CCI
5	B21-P2573-L	2" Pipe to Tee Socket Weld	80A0472	N/A	N/A	PT	IV	CCI
6	B21-P2573-FWM	Tee to 2" Pipe Socket Weld	80A0472	N/A	N/A	PT	IV	CCI
7	B21-P2573-FWN	2" Pipe to Tee Socket Weld	80A0472	N/A	N/A	PT	IV	CCI
8	B21-P2573-J	Tee to 2" X 1½" Red. Insert Socket Weld	80A0472	N/A	N/A	PT	IV	CCI
9	B21-P2573-FWO	Tee to 2" Pipe Socket Weld	80A0472	N/A	N/A	PT	IV	CCI



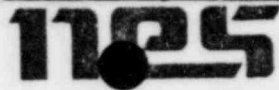
System: MS - Break Exclusion
 Ref. Dwg. A-13
 Augmented Preservice Inspection

PROGRAM PLAN AND SCHEDULE

Shoreham

By: MJD 1 8/3/82
 App: ALC 1 8/4/82
 Rev. 7 Page 37 of 39

ITEM NO.	COMPONENT IDENTIFICATION	COMPONENT DESCRIPTION	PROCEDURE NUMBER	CALIBRATION BLOCK (If applicable)	CODE CATEGORY	CODE EXAM METHOD	ZONE NO.	REMARKS
10	B21-P2573-FWP	2" Pipe to Ell Socket Weld	80A0472	N/A	N/A	PT	IV	CCI
11	B21-P2573-FWQ	Ell to 2" X 3/4" Restriction Orifice Socket Weld	80A0472	N/A	N/A	PT	IV	CCI
12	E32-P6003-FWA	2" X 1 1/2" Red. Insert to 1 1/2" Pipe Socket Weld	80A0472	N/A	N/A	PT	IV	CCI
13	E32-P6003-B	1 1/2" Pipe to Ell Socket Weld	80A0472	N/A	N/A	PT	IV	CCI
14	E32-P6003-C	Ell to 1 1/2" Pipe Socket Weld	80A0472	N/A	N/A	PT	IV	CCI
15	E32-P6003-FWU	1 1/2" Pipe to Ell Socket Weld	80A0472	N/A	N/A	PT	IV	CCI
16	E32-P6003-V	Ell to 1 1/2" Pipe Socket Weld	80A0472	N/A	N/A	PT	IV	CCI
17	E32-P6003-W	1 1/2" Pipe to Ell Socket Weld	80A0472	N/A	N/A	PT	IV	CCI
18	E32-P6003-X	Ell to 1 1/2" Pipe Socket Weld	80A0472	N/A	N/A	PT	IV	CCI



System: MS - Break Exclusion
 Ref. Dwg. A-13
 Augmented Preservice Inspection

PROGRAM PLAN AND SCHEDULE

Shoreham

By: MJD / 8/3/82
 App: AL / 8/4/82
 Rev. 9 Page 38 of 39

ITEM NO.	COMPONENT IDENTIFICATION	COMPONENT DESCRIPTION	PROCEDURE NUMBER	CALIBRATION BLOCK (If applicable)	CODE CATEGORY	CODE EXAM METHOD	ZONE NO.	REMARKS
19	E32-P6003-Y	1½" Pipe to Ell Socket Weld	80A0472	N/A	N/A	PT	IV	CCI
20	E32-P6003-Z	Ell to 1½" Pipe Socket Weld	80A0472	N/A	N/A	PT	IV	CCI
21	E32-P6003-AA	1½" Pipe to Ell Socket Weld	80A0472	N/A	N/A	PT	IV	CCI
22	E32-P6003-BB	Ell to 1½" Pipe Socket Weld	80A0472	N/A	N/A	PT	IV	CCI
23	E32-P6003-CC	1½" Pipe to Ell Socket Weld	80A0472	N/A	N/A	PT	IV	CCI
24	E32-P6003-FWDD	Ell to 1½" Pipe Socket Weld	80A0472	N/A	N/A	PT	IV	CCI
25	E32-P6003-D	1½" Pipe to Tee Socket Weld	80A0472	N/A	N/A	PT	IV	CCI
26	E32-P6003-M	Tee to 1½" X ¾" Red. Insert Socket Weld	80A0472	N/A	N/A	PT	IV	CCI
27	E32-P6003-FWE	Tee to 1½" Pipe Socket Weld	80A0472	N/A	N/A	PT	IV	CCI



System: MS - Break Exclusion
 Ref. Dwg. A-13
 Augmented Preservice Inspection

PROGRAM PLAN AND SCHEDULE

Shoreham

By: MJD / 8/3/82
 App: AK / 8/4/82
 Rev. 9 Page 39 of 39

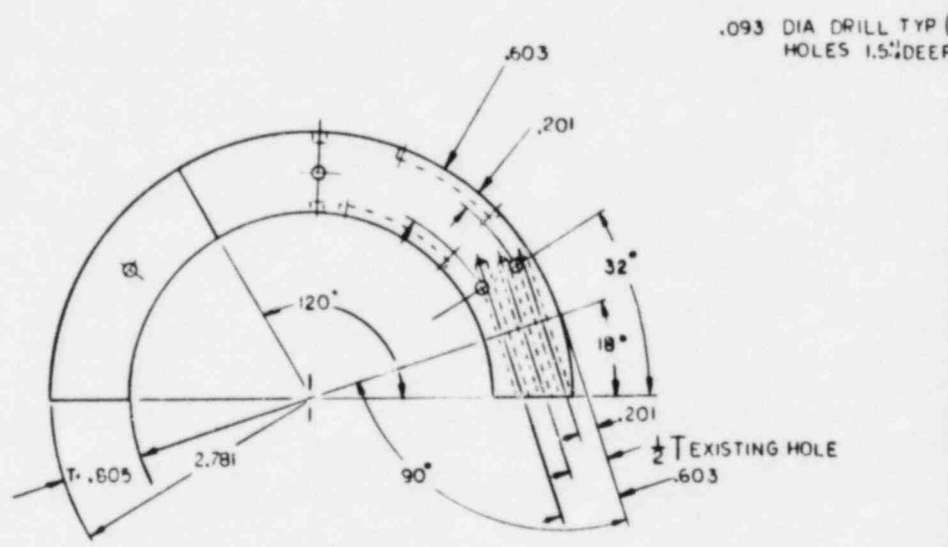
ITEM NO.	COMPONENT IDENTIFICATION	COMPONENT DESCRIPTION	PROCEDURE NUMBER	CALIBRATION BLOCK (If applicable)	CODE CATEGORY	CODE EXAM METHOD	ZONE NO.	REMARKS
28	E32-P6003-F	1½" Pipe to Tee Socket Weld	80A0472	N/A	N/A	PT	IV	CCI
29	E32-P6003-G	Tee to 1½" Pipe Socket Weld	80A0472	N/A	N/A	PT	IV	CCI
30	E32-P6003-H	1½" Pipe to Ell Socket Weld	80A0472	N/A	N/A	PT	IV	CCI
31	E32-P6003-I	Ell to 1½" Pipe Socket Weld	80A0472	N/A	N/A	PT	IV	CCI
32	E32-P6003-FWEE	1½" Pipe to Coupling Socket Weld	80A0472	N/A	N/A	PT	IV	CCI
33	E32-P6003-FWFF	Coupling to 1½" Pipe Socket Weld	80A0472	N/A	N/A	PT	IV	CCI
34	E32-P6003-FWL	1½" Pipe to Valve E32-MOV-021B Socket Weld	80A0472	N/A	N/A	PT	IV	CCI
35	E32-P6075-A	Tee to 1½" X 1" Red. insert Socket Weld	80A0472	N/A	N/A	PT	IV	CCI

D

C

B

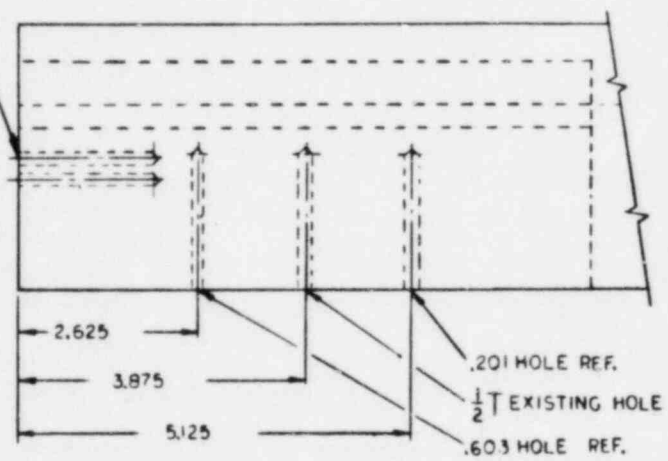
A



NOTES

- 1 REFER TO NES DWG. 80E0415 FOR COMPLETE DETAILS OF CALIBRATION BLOCK
- 2 THIS DWG. TO BE USED FOR ADDITIONAL HOLES ONLY.
- 3 THIS IS A MODIFICATION OF AN EXISTING BLOCK.

REVISIONS					
ZONE	NO	DESCRIPTION	DRAWN	DATE	APPROVED



QTY/ASSY	ITEM	PART NO	DESCRIPTION	MATERIAL																		
TOLERANCES UNLESS OTHERWISE SPECIFIED		CONTROLLED STATUS/USAGE STAMP																				
<table border="1"> <tr> <th colspan="3">DECIMALS</th> </tr> <tr> <td>1 PLACE</td> <td>2 PLACE</td> <td>3 PLACE</td> </tr> <tr> <td>± .03</td> <td>± .010</td> <td>± .005</td> </tr> <tr> <th>FRACTIONS</th> <th>ANGLES</th> <th>CHAMFERS</th> </tr> <tr> <td>± 1/64</td> <td>± 1°</td> <td>± N/A</td> </tr> </table>		DECIMALS			1 PLACE	2 PLACE	3 PLACE	± .03	± .010	± .005	FRACTIONS	ANGLES	CHAMFERS	± 1/64	± 1°	± N/A	<p style="text-align: center; font-size: 2em; font-weight: bold;">CONTROLLED COPY</p> <p style="text-align: center; font-size: 1.5em; font-weight: bold;">VALID ONLY IF THIS STAMP IS RED</p>					
DECIMALS																						
1 PLACE	2 PLACE	3 PLACE																				
± .03	± .010	± .005																				
FRACTIONS	ANGLES	CHAMFERS																				
± 1/64	± 1°	± N/A																				
SURFACE FINISH AA OR BETTER N/A																						
FILLETS- R2 TO R3 RADIUS BREAK EDGES R2 RADIUS OR CHAMFER MAX NATIONAL STANDARD TOLERANCES APPLY TO COMMERCIAL MATLS THREADS- UNIFIED CL 2A-2B PER ASA B1.1 DIMENSIONS ARE IN INCHES (BASED ON 68°F / 20°C) DIMS DO NOT INCLUDE ALLOWANCE FOR FAS OR WELD SHRINKAGE DIMS AND TOLERANCES ARE TO BE INTERPRETED IN ACCORDANCE WITH ANSI Y14.5 1973		<table border="1"> <tr> <th>APPROVALS</th> <th>DATE</th> </tr> <tr> <td>DRAWN <i>[Signature]</i></td> <td>4/4/82</td> </tr> <tr> <td>CHECKED <i>[Signature]</i></td> <td>7/1/82</td> </tr> <tr> <td>TASK <i>[Signature]</i></td> <td>7/1/82</td> </tr> <tr> <td>LEVEL <i>[Signature]</i></td> <td>7/1/82</td> </tr> <tr> <td>MAIN OPS <i>[Signature]</i></td> <td>7/2/82</td> </tr> <tr> <td>PROJ MGR <i>[Signature]</i></td> <td>7/2/82</td> </tr> <tr> <td>QA <i>[Signature]</i></td> <td>7/2/82</td> </tr> <tr> <td>WGR 24 Ball from VSP</td> <td>7-2-82</td> </tr> </table>			APPROVALS	DATE	DRAWN <i>[Signature]</i>	4/4/82	CHECKED <i>[Signature]</i>	7/1/82	TASK <i>[Signature]</i>	7/1/82	LEVEL <i>[Signature]</i>	7/1/82	MAIN OPS <i>[Signature]</i>	7/2/82	PROJ MGR <i>[Signature]</i>	7/2/82	QA <i>[Signature]</i>	7/2/82	WGR 24 Ball from VSP	7-2-82
APPROVALS	DATE																					
DRAWN <i>[Signature]</i>	4/4/82																					
CHECKED <i>[Signature]</i>	7/1/82																					
TASK <i>[Signature]</i>	7/1/82																					
LEVEL <i>[Signature]</i>	7/1/82																					
MAIN OPS <i>[Signature]</i>	7/2/82																					
PROJ MGR <i>[Signature]</i>	7/2/82																					
QA <i>[Signature]</i>	7/2/82																					
WGR 24 Ball from VSP	7-2-82																					
<table border="1"> <tr> <th>NEXT ASSEMBLY</th> <th>FINAL ASSEMBLY</th> </tr> <tr> <td></td> <td></td> </tr> </table>		NEXT ASSEMBLY	FINAL ASSEMBLY			<table border="1"> <tr> <td>SIZE</td> <td>FSCM NO</td> <td>DRAWING NO</td> <td>REV</td> </tr> <tr> <td>D</td> <td>53603</td> <td>8005020</td> <td>C</td> </tr> <tr> <td>SCALE</td> <td>NONE</td> <td>WEIGHT</td> <td></td> </tr> </table>			SIZE	FSCM NO	DRAWING NO	REV	D	53603	8005020	C	SCALE	NONE	WEIGHT			
NEXT ASSEMBLY	FINAL ASSEMBLY																					
SIZE	FSCM NO	DRAWING NO	REV																			
D	53603	8005020	C																			
SCALE	NONE	WEIGHT																				
APPLICATION		PROJECT/TASK 5526-255																				



THIS DRAWING IS THE PROPERTY OF NUCLEAR ENERGY SERVICES DANBURY, CONNECTICUT AND IS NOT TO BE REPRODUCED, COPIED, FURNISHED OR INFORMATION IN ANY MANNER OR BY ANY MEANS WITHOUT THE WRITTEN PERMISSION OF NUCLEAR ENERGY SERVICES DANBURY, CONNECTICUT.

TITLE JET PUMP INSTRUMENTATION MODIFICATION CALIBRATION BLOCK

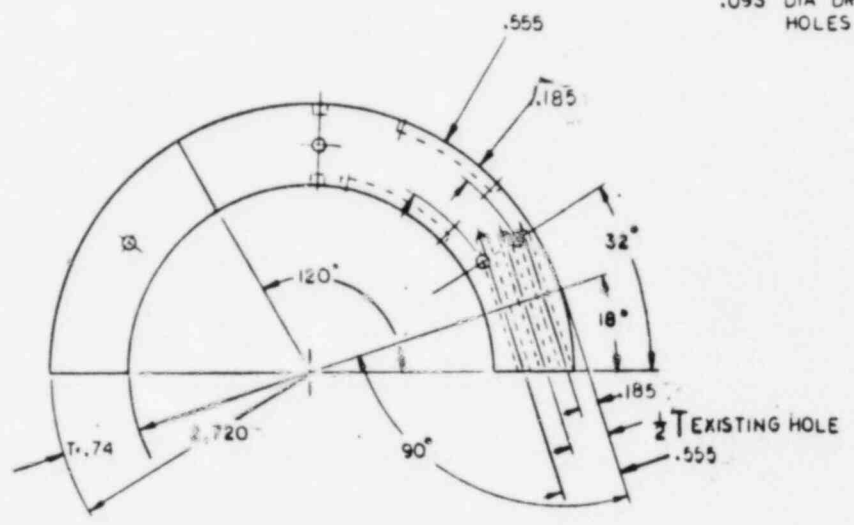
D

C

B

A

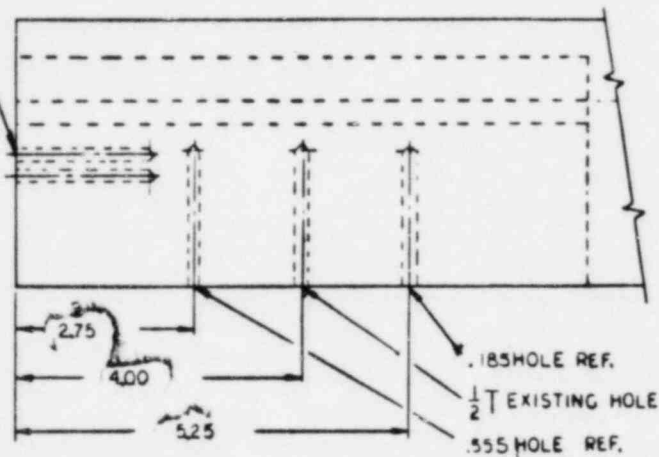
.093 DIA DRILL TYP (4 HOLES 1.5" DEEP



NOTES

- 1 REFER TO NES DWG. 80E0518 FOR COMPLETE DETAILS OF CALIBRATION BLOCK.
- 2 THIS DWG. TO BE USED FOR ADDITIONAL HOLES ONLY.
- 3 THIS IS A MODIFICATION OF AN EXISTING BLOCK.

ZONE		NO	DESCRIPTION	REVISIONS	DRAWN	DATE	CHECKED	APPROVED



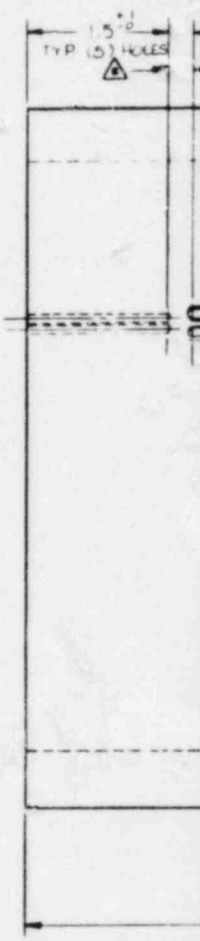
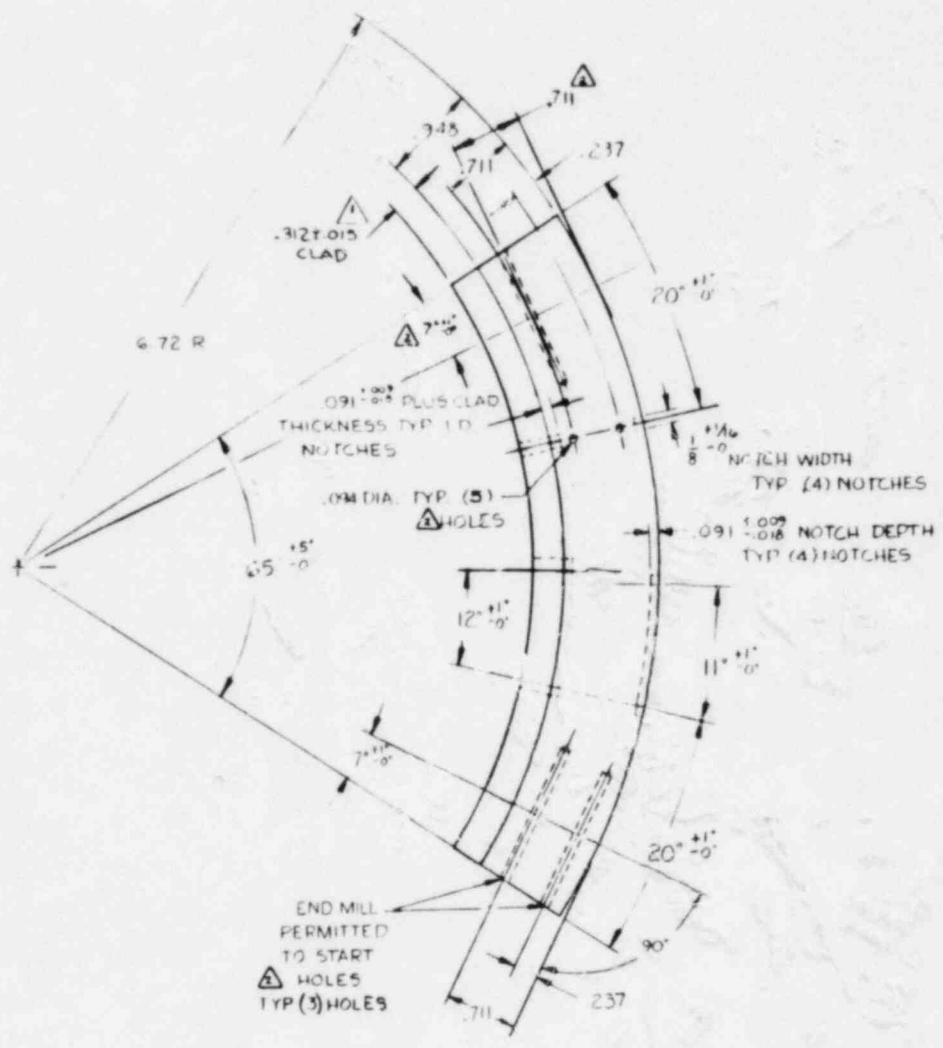
QTY / ASBY	ITEM	PART NO	DESCRIPTION	MATERIAL
CONTROLLED COPY VALID ONLY IF THIS STAMP IS RED				
TOLERANCES UNLESS OTHERWISE SPECIFIED DECIMALS 1 PLACE ± .03 2 PLACE ± .010 3 PLACE ± .005 FRACTIONS ± 1/64 ANGLES ± 1° CHAMFERS ± 1/4"		APPROVALS DRAWN <i>M. J. O'Neil</i> 6/30/82 CHECKED <i>M. J. O'Neil</i> 7-1-82 TASK ENGR <i>S. J. O'Neil</i> 7-1-82 LEVEL <i>S. J. O'Neil</i> 7-1-82 WASH OPS <i>S. J. O'Neil</i> 7-2-82 DEPT MGR <i>S. J. O'Neil</i> 7-2-82 PROJ MGR <i>S. J. O'Neil</i> 7-2-82 QA MGR <i>S. J. O'Neil</i> 7-2-82		
SURFACE FINISH AA OR BETTER N/A FILLETS R2 TO R3 RADIUS BREAK EDGES R2 RADIUS OR CHAMFER MAX NATIONAL STANDARD TOLERANCES APPLY TO COMMERCIAL MATLS THREADS UNIFIED CL ZA 2B PER ASA B1.1 DIMENSIONS ARE IN INCHES BASED ON 68°F (20°C) DIMS DO NOT INCLUDE ALLOWANCE FOR FAB OR WELD SHRINKAGE DIMS AND TOLERANCES ARE TO BE INTERPRETED IN ACCORDANCE WITH ANSI Y14.5 1973		1125 THIS DRAWING IS THE PROPERTY OF NUCLEAR ENERGY SERVICES DANBURY, CONNECTICUT AND IS NOT TO BE REPRODUCED, COPIED, FORNISHED, OR LOANED IN ANY MANNER WITHOUT THE WRITTEN PERMISSION OF THE COMPANY.		
NEXT ASSEMBLY APPLICATION FINAL ASSEMBLY APPLICATION		TITLE C.R.D. RETURN NOZZLE TO CAP MODIFICATION BLOCK SIZE D PSGM NO 53603 DRAWING NO 80D5021 REV 0 SCALE NONE WEIGHT		
		PROJECT/TASK 5536-255		

D

C

B

A

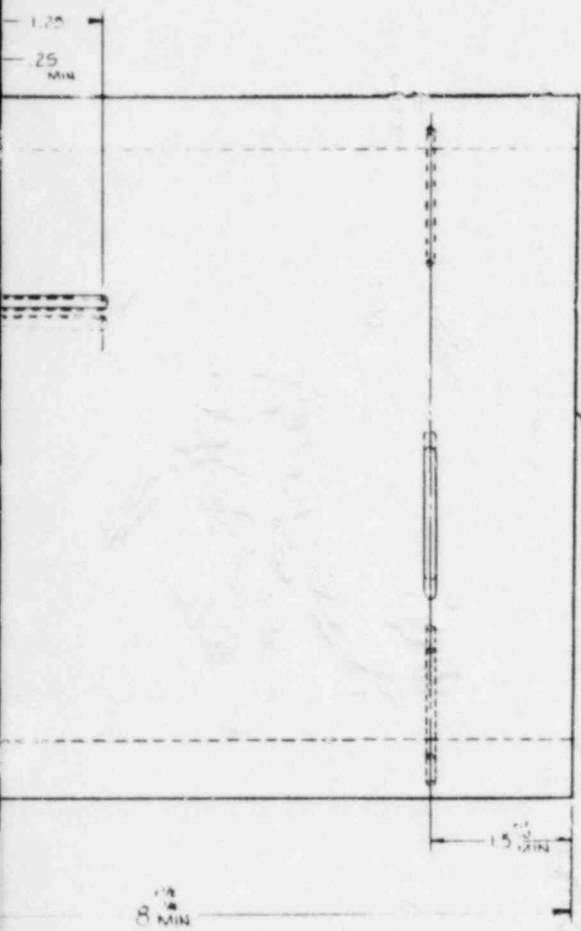


NOTES

- 1) MATERIAL TO BE FREE OF RUST AND SCALE BEFORE MACHINING.
- 2) ALL HOLES TO BE DRILLED AND REAMED
- 3) NOTCH FINISH - 125/UR BETTER
- 4) BLOCK IDENTIFICATION SHALL INCLUDE ID NUMBER (CCS-111A), MATERIAL TYPE, HEAT NUMBER, AND THIS DRAWING NUMBER
- 5) SINES WILL STAMP HEAT NUMBER ON THE FINISHED CALIBRATION BLOCK.
- 6) DRAWING TO BE DELIVERED PER NPS PROCEDURE ROAD23

REVISIONS

ZONE	NO	DESCRIPTION	DRAWN	DATE	CHECKED	APPROVED
D-7	1	SEE CRA 2488	MJA	4-19-81	MJS	[Signature]
GEN	2	SEE CRA 2681	MJA	7-26-81	MJA	[Signature]



STAMP BLOCK IDENTIFICATION
SEE NOTE 41 ON THIS DRAWING
WITH 1/2 INCH DIA. TIPS

QTY / ASSY	ITEM	PART NO	DESCRIPTION	MATERIAL
CONTROLLED STATUS/USAGE STAMP				
CONTROLLED COPY VALID ONLY IF THIS STAMP IS REPRODUCED				
TOLERANCES UNLESS OTHERWISE SPECIFIED DECIMALS 1 PLACE ± .03 2 PLACE ± .010 3 PLACE ± .005 FRACTIONS ± 1/64 ANGLES ± 1° CHAMFERS ± N/A		APPROVALS DRAWN: M. Thurston CHECKED: [Signature] DATE: 11-20-81		
SURFACE FINISH-AA OR BETTER FILLETS- R2 TO R3 RADIUS BREAK EDGES- R2 RADIUS OR CHAMFER MAX NATIONAL STANDARD TOLERANCES APPLY TO COMMERCIAL MATLS THREADS- UNIFIED CL 2A-2B PER ASA B1.1 DIMENSIONS ARE IN INCHES BASED ON 68°F (20°C) DIMS DO NOT INCLUDE ALLOWANCE FOR FAB OR WELD SHRINKAGE DIMS AND TOLERANCES ARE TO BE INTERPRETED IN ACCORDANCE WITH ANSI Y14.5 1975		1125 THIS DRAWING IS THE PROPERTY OF NUCLEAR ENERGY SERVICES DANBURY, CONNECTICUT AND IS NOT TO BE REPRODUCED OR USED TO FURNISH ANY INFORMATION FOR MAKING OF DRAWINGS OR EQUIPMENT EXCEPT WHERE PROVIDED FOR BY AGREEMENT WITH SAIC COMPANY.		
TITLE CALIBRATION BLOCK CORE SPRAY NOZZLE-10-SAFE I (N) CS-1-1A		SIZE: D 53603 DRAWING NO: 80104-10 SCALE: 1:1 REV: 2		
APPLICATION NEXT ASSEMBLY: [] FINAL ASSEMBLY: []		PROJECT/TASK: []		