

40-8698
w/14 9/17/82

EMBANKMENT FOUNDATION AND SLUSH GROUTING
PHOTOGRAPHS AND GEOLOGIC MAP

Prepared for
U. S. NUCLEAR REGULATORY COMMISSION

Prepared by
Plateau Resources Limited
772 Horizon Drive
Grand Junction, Colorado 81501

September, 1982

8211020252 820917
PDR ADOCK 04008698
C PDR

OFFICIAL DOCKET COPY

20755

Introduction

The photographs in this report show the embankment foundation preparation in progressive stages and the locations and extent of slush grouting. In addition, Table 1 "Geologic Map - Key Trench Foundation" shows material types and the locations of shears, joints, and bedding planes.

DOCUMENT/ PAGE PULLED

ANO. 8211020252

NO. OF PAGES 1

REASON

PAGE ILEGIBLE

HARD COPY FILED AT. PDR CF

OTHER _____

BETTER COPY REQUESTED ON _____

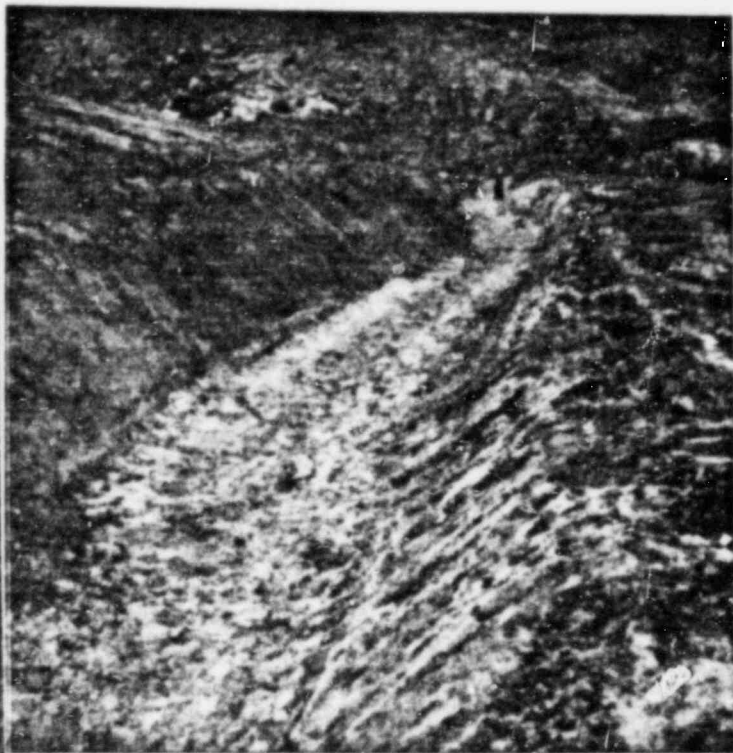
PAGE TOO LARGE TO FILM.

HARD COPY FILED AT. PDR

CF

OTHER _____

FILMED ON APERTURE CARD NO 8211020252-01



TOE DRAIN TRENCH

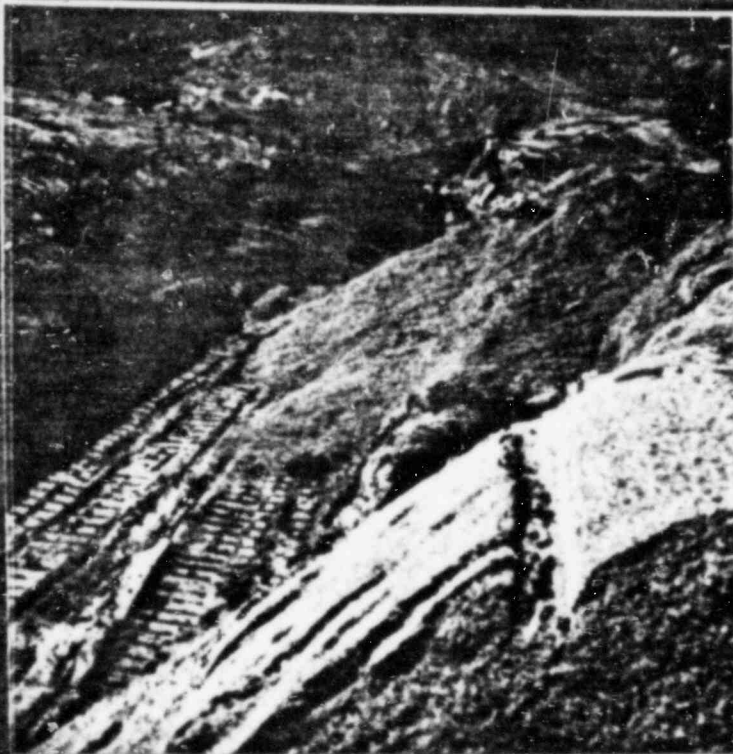
2-80



KEYWAY TRENCH

4-2-80

LOOKING EAST



TOE DRAIN TRENCH - PLACING
SAND FILTER MATERIAL

4-14-80



KEYWAY TRENCH
LOOKING EAST

4-14-80



KEYTRENCH

5-22-80



ZONE 2 - MINUS 6"

7-2-80

↑ EAST



KEYTRENCH + CORE

7-2-80

↑ EAST



2 BEFORE STA. 6
SLUSH CRUIT

7-11-80

↑ EAST

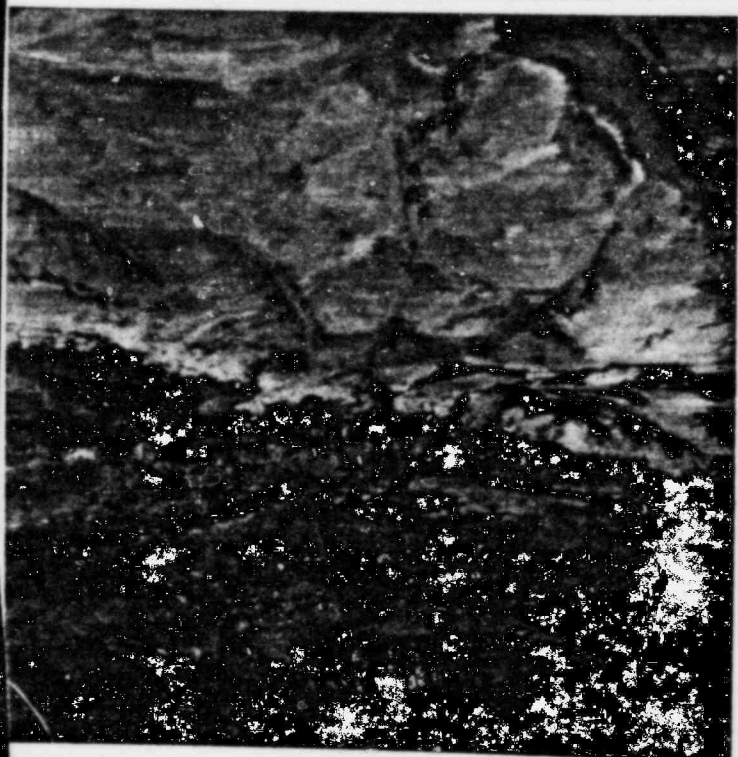
KEYTRENCH
SLASH GROUT
WEST
9-11-80



9-11-80 Key Trench
Sta 10+50 Down



Key Trench
+A. 11+00
9-11-80



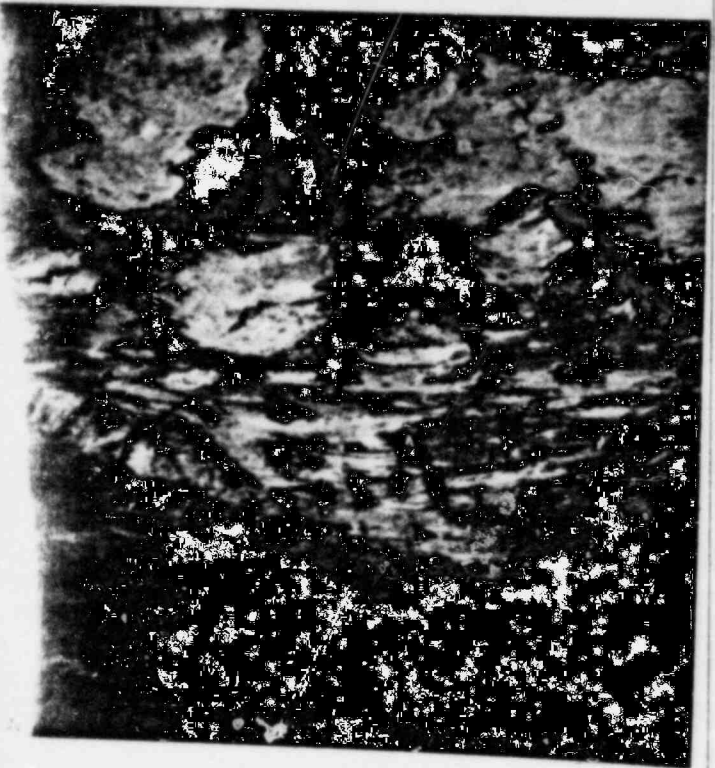
Key Trench
+A 10+50 Down
9-11-80



7-11-80
STAL6
↓ EAST
SLUSH GROUT
1 BEFORE



STAL6
9-11-80
STAL6
10#50 - WP



7-11-80
STAL6
↓ EAST
SLUSH GROUT
2 AFTER



7-11-80
STAL6
↓ EAST
SLUSH GROUT
#1 AFTER





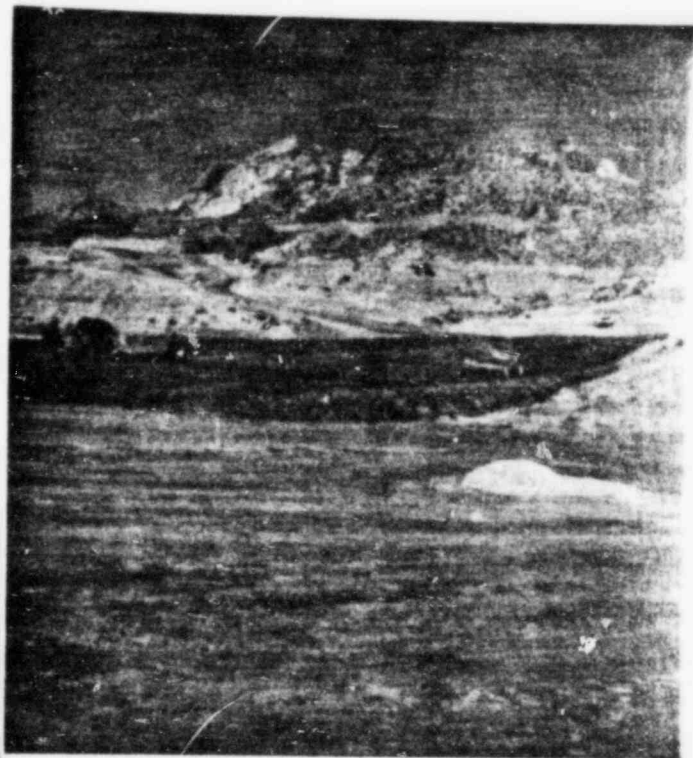
KEYTRENCH
SUNSH BRANT
-11-80 ↑ EAST



9-11-80 KEYTRENCH
A 10+50 UP



7-17-80
STA 11+00



TAILS DAM
7-25-80 ↑ EAST



Tails Dam
7-26-80



Blanket Draw
Compacted 10-7-80



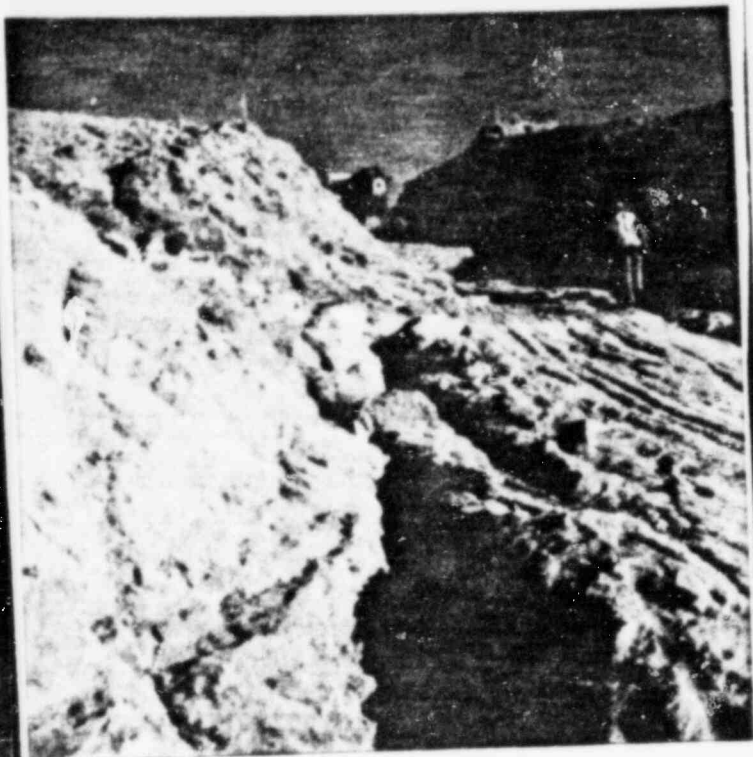
DAM SITE

8-30-80

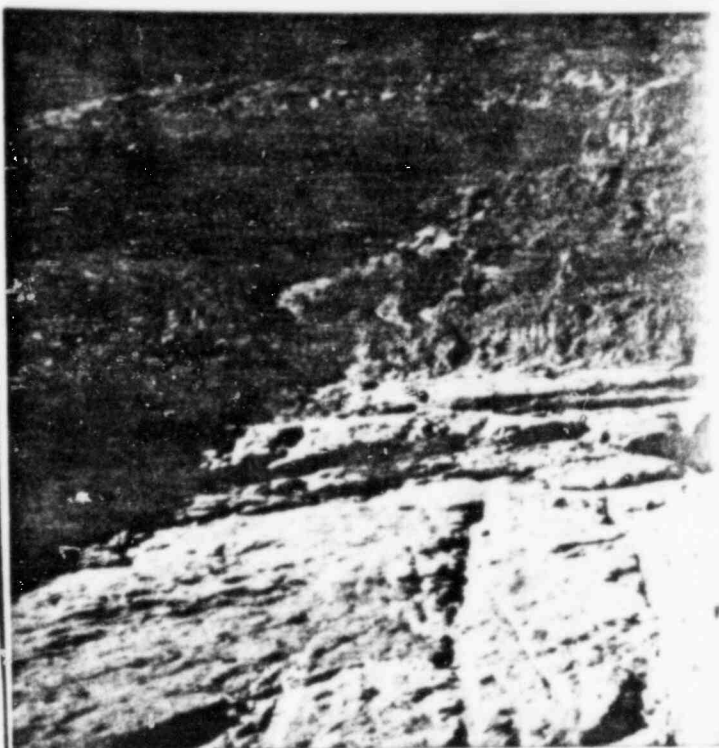
↑ WEST



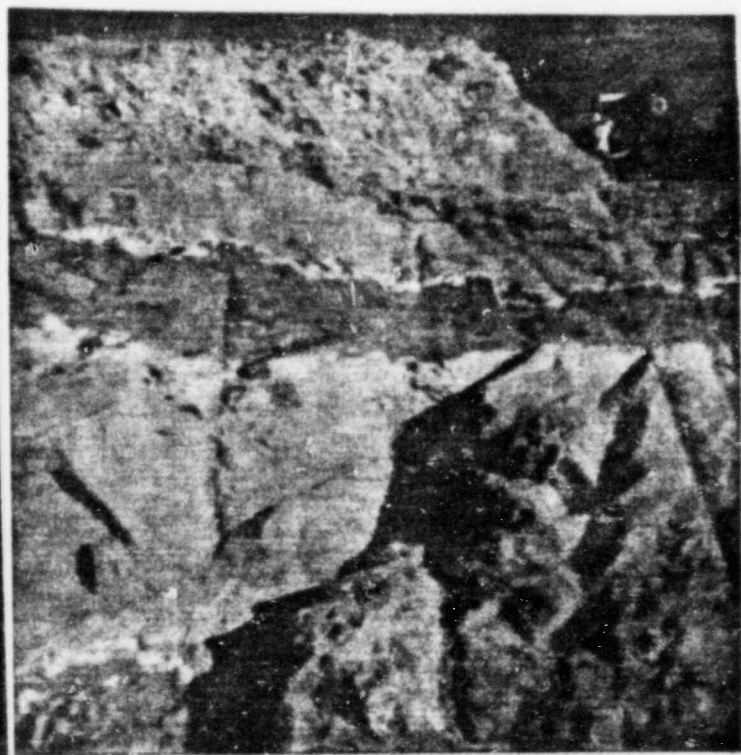
11-10-80
Slush Grout area
Sta 13+00



Slush Grout area 11-10-80
Sta 4+00



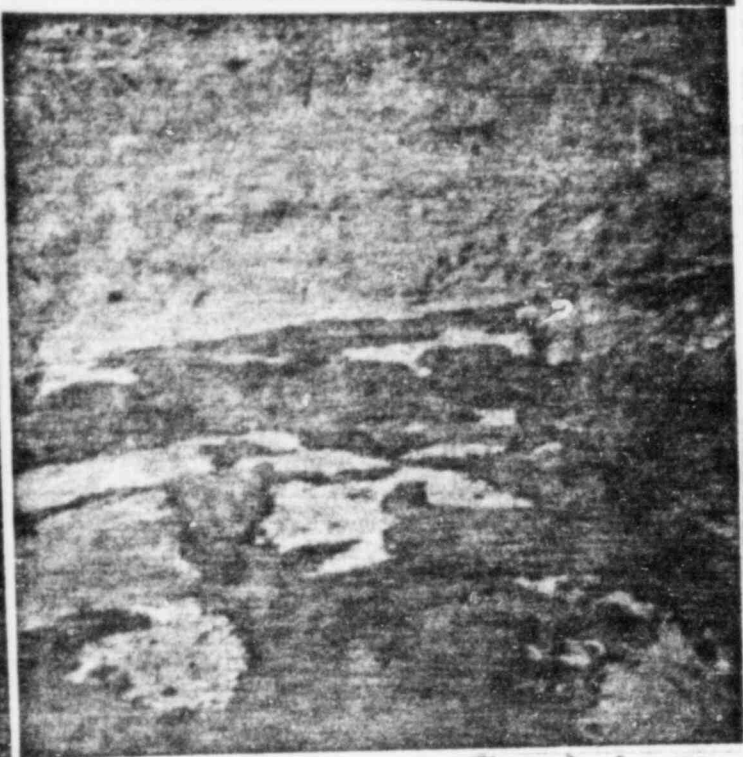
11-10-80
Slush Grout area
Sta 13+00



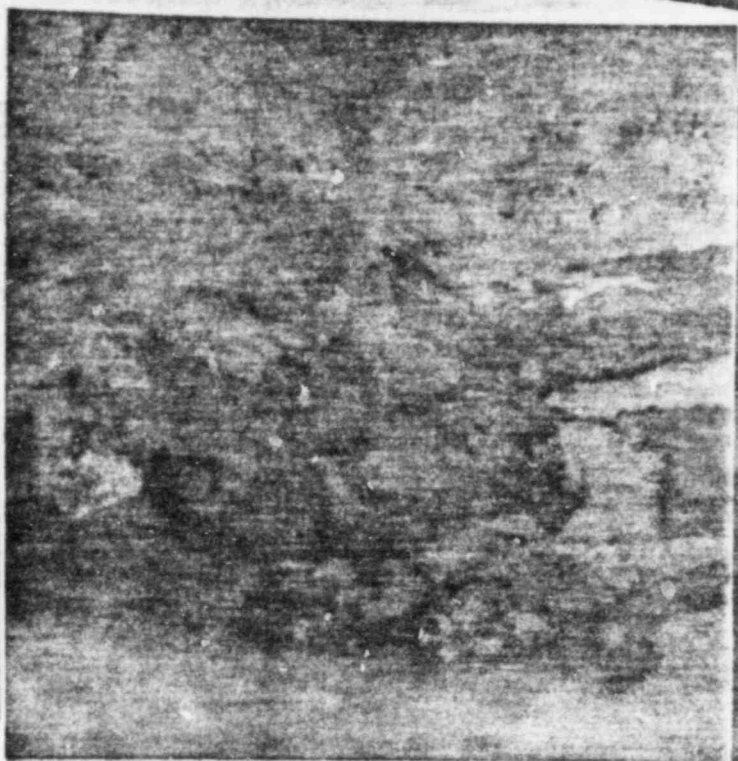
11-10-80
Slush Grout area
Sta 4+50



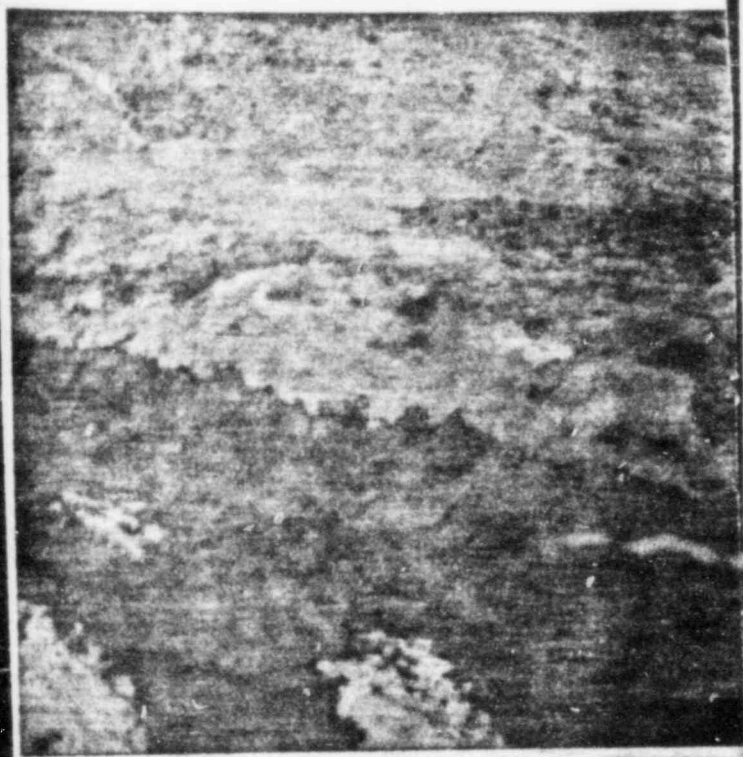
11-10-80
Slush Grout area
4+ Sta 13+00



11-10-80
after slush Grout
Sta 13+00



11-10-80
after slush Grout
Sta 13+00



11-10-80
after slush Grout
Sta 13+00



11-11-80
after slush Grout
Sta 4+00 - 4+50

Kodak PAPER Protector K3-11 Heavyweight



11-11-80
after Slush Grout
Sta 4+00



11-11-80
after Slush Grout
Sta 4+00-4+50



11-11-80
after Slush Grout
Sta 4+00-4+50



11-11-80
after Slush Grout
Sta 4+00-4+50

Kodak PAPER Protector K3-11 Heavyweight



11-11-80
after slash grout
sta 4+00-4+50



11-11-80
after slash grout
sta 4+00-4+50



11-11-80
after slash grout
sta 4+00